

Data Path : Z:\voasrv\HPCHEM1\MSVOA_W\Data\VW110424\
 Data File : VW030903.D
 Acq On : 04 Nov 2024 11:51
 Operator : SY/MD
 Sample : VSTD100
 Mi sc : 5.00g/10mL/MSVOA_W/SOIL
 ALS Vial : 6 Sample Multiplier: 1

Instrument :
 MSVOA_W
ClientSampleId :

Quant Time: Nov 05 00:11:34 2024
 Quant Method : Z:\voasrv\HPCHEM1\MSVOA_W\Method\SFAMWLM110424SMA.M
 Quant Title : SFAM01.0
 QLast Update : Tue Nov 05 00:08:46 2024
 Response via : Initial Calibration

Compound	R. T.	QI on	Response	Conc	Units	Dev(Min)
Internal Standards						
1) 1,4-Difluorobenzene	8.843	114	482750	25.000	ug/L	0.00
28) Chlorobenzene-d5	11.629	117	436797	25.000	ug/L	0.00
58) 1,4-Dichlorobenzene-d4	13.556	152	212642	25.000	ug/L	0.00
System Monitoring Compounds						
4) Vinyl chloride-d3	2.363	65	695058	87.787	ug/L	0.00
7) Chloroethane-d5	2.893	69	562262	92.593	ug/L	0.00
11) 1,1-Dichloroethene-d2	4.021	65	312284	95.587	ug/L	0.00
21) 2-Butanone-d5	7.075	46	309502	239.822	ug/L	0.00
24) Chloroform-d	7.648	84	1396217	98.107	ug/L	0.00
26) 1,2-Dichloroethane-d4	8.307	65	692881	97.921	ug/L	0.00
32) Benzene-d6	8.276	84	2688298	99.068	ug/L	0.00
36) 1,2-Dichloropropane-d6	9.270	67	800512	100.070	ug/L	0.00
41) Toluene-d8	10.319	98	2517500	103.430	ug/L	0.00
43) trans-1,3-Dichloroprop...	10.575	79	359784	110.957	ug/L	0.00
47) 2-Hexanone-d5	10.922	63	268075	258.576	ug/L	0.00
56) 1,1,2,2-Tetrachloroeth...	12.690	84	579839	104.039	ug/L	0.00
66) 1,2-Dichlorobenzene-d4	13.848	152	795188	102.662	ug/L	0.00
Target Compounds						
2) Dichlorodifluoromethane	2.015	85	422238	88.100	ug/L	98
3) Chloromethane	2.229	50	657636	94.912	ug/L	99
5) Vinyl chloride	2.375	62	716509	87.254	ug/L	96
6) Bromomethane	2.783	94	467268	86.664	ug/L	95
8) Chloroethane	2.930	64	435826	87.549	ug/L	100
9) Trichlorofluoromethane	3.265	101	681038	92.045	ug/L	100
10) 1,1,2-Trichloro-1,2,2-...	4.070	101	602910	91.283	ug/L	95
12) 1,1-Dichloroethene	4.045	96	591655	94.819	ug/L	95
13) Acetone	4.118	43	318669	208.076	ug/L	99
14) Carbon disulfide	4.387	76	1865203	90.930	ug/L	99
15) Methyl Acetate	4.667	43	233897	100.204	ug/L	100
16) Methylene chloride	4.917	84	590900	86.580	ug/L	97
17) trans-1,2-Dichloroethene	5.429	96	645126	94.242	ug/L	98
18) Methyl tert-butyl Ether	5.429	73	939839	101.719	ug/L	99
19) 1,1-Dichloroethane	6.216	63	1168979	91.512	ug/L	99
20) cis-1,2-Dichloroethene	7.173	96	720092	99.159	ug/L	97
22) 2-Butanone	7.167	43	391214	221.306	ug/L	99
23) Bromochloromethane	7.520	128	297703	93.608	ug/L	92
25) Chloroform	7.673	83	1202866	89.494	ug/L	95
27) 1,2-Dichloroethane	8.398	62	747824	89.339	ug/L	98
29) Cyclohexane	7.959	56	1060282	101.292	ug/L	100
30) 1,1,1-Trichloroethane	7.874	97	1002854	89.379	ug/L	99
31) Carbon tetrachloride	8.069	117	902622	89.526	ug/L	97
33) Benzene	8.325	78	2585753	91.844	ug/L	100
34) Trichloroethene	9.093	95	723867	93.240	ug/L	93
35) Methyl cyclohexane	9.331	83	1185402	96.338	ug/L	97
37) 1,2-Dichloropropane	9.368	63	648445	92.159	ug/L	99
38) Bromodichloromethane	9.642	83	863862	93.490	ug/L	98
39) cis-1,3-Dichloropropene	10.069	75	1087525	103.322	ug/L	98
40) 4-Methyl-2-pentanone	10.209	43	692337	216.859	ug/L	99
42) Toluene	10.386	91	2804480	94.068	ug/L	97
44) trans-1,3-Dichloropropene	10.605	75	888454	101.605	ug/L	98

Data Path : Z:\voasrv\HPCHEM1\MSVOA_W\Data\VW110424\
 Data File : VW030903.D
 Acq On : 04 Nov 2024 11:51
 Operator : SY/MD
 Sample : VSTD100
 Mi sc : 5.00g/10mL/MSVOA_W/SOIL
 ALS Vial : 6 Sample Multiplier: 1

Instrument :
 MSVOA_W
ClientSampleId :

Quant Time: Nov 05 00:11:34 2024
 Quant Method : Z:\voasrv\HPCHEM1\MSVOA_W\Method\SFAMWLM110424SMA.M
 Quant Title : SFAM01.0
 QLast Update : Tue Nov 05 00:08:46 2024
 Response via : Initial Calibration

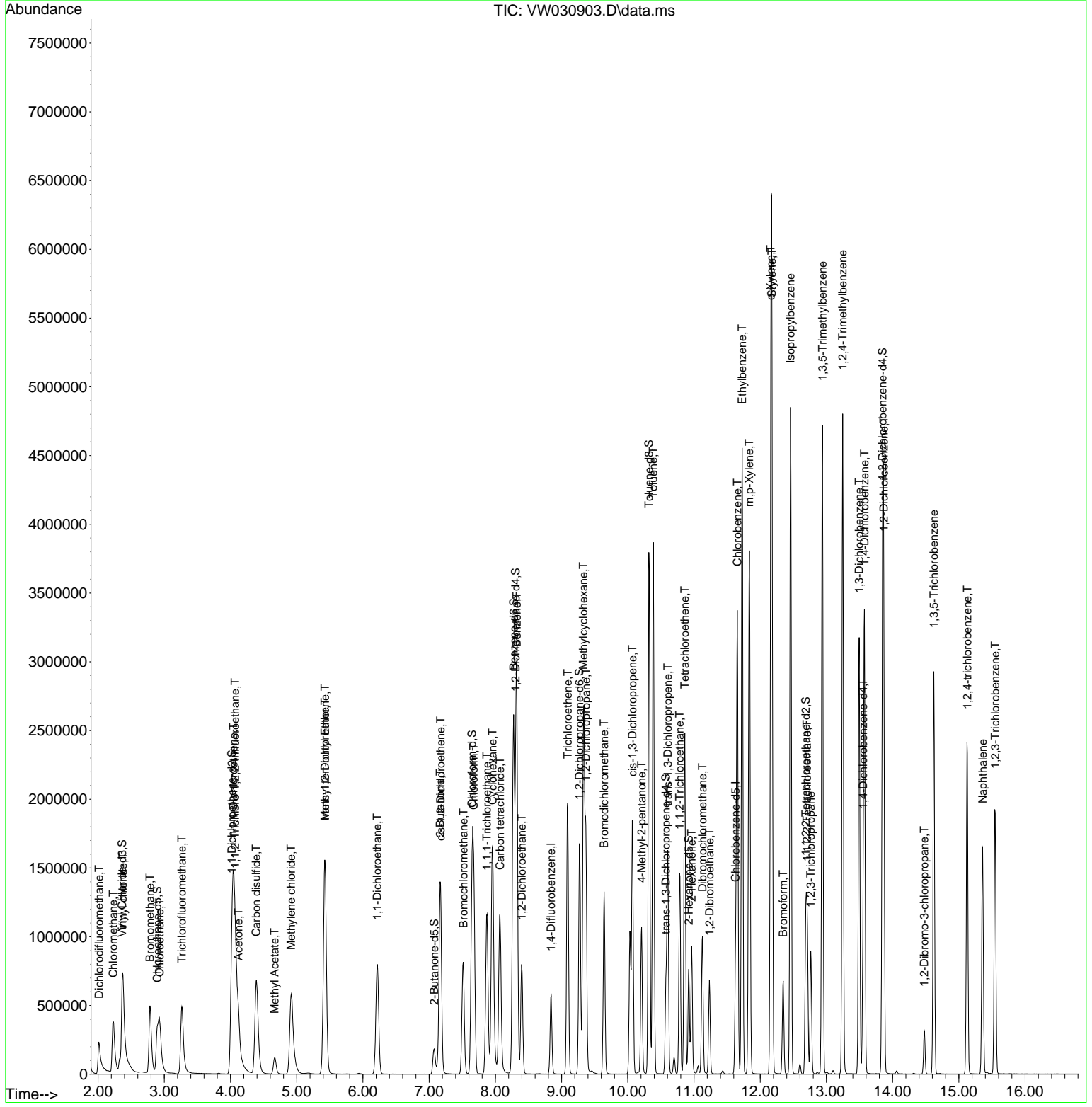
Compound	R. T.	QI on	Response	Conc	Units	Dev(Min)
45) 1, 1, 2-Tri chloroethane	10.782	97	471051	93.270	ug/L	99
46) Tetrachloroethene	10.861	164	527733	88.919	ug/L	88
48) 2-Hexanone	10.965	43	558683	228.213	ug/L	97
49) Dibromochloromethane	11.129	129	525864	95.499	ug/L	92
50) 1, 2-Dibromoethane	11.233	107	453769	97.429	ug/L	98
51) Chlorobenzene	11.654	112	1713933	89.827	ug/L	91
52) Ethyl benzene	11.727	91	3248849	96.444	ug/L	99
53) m, p-Xylene	11.837	106	1228589	96.972	ug/L	97
54) o-Xylene	12.160	106	1164281	99.871	ug/L	95
55) Styrene	12.178	104	1980619	99.437	ug/L	96
57) 1, 1, 2, 2-Tetrachloroethane	12.708	83	518023	93.987	ug/L	97
59) Bromoform	12.349	173	314013	103.418	ug/L	97
60) Isopropyl benzene	12.458	105	3218703	99.232	ug/L	99
61) 1, 2, 3-Tri chloropropane	12.763	75	375442	94.175	ug/L	99
62) 1, 3, 5-Tri methyl benzene	12.940	105	2580502	101.043	ug/L	100
63) 1, 2, 4-Tri methyl benzene	13.245	105	2578652	103.682	ug/L	99
64) 1, 3-Di chlorobenzene	13.495	146	1303951	91.554	ug/L	95
65) 1, 4-Di chlorobenzene	13.574	146	1311153	89.672	ug/L	96
67) 1, 2-Di chlorobenzene	13.867	146	1182820	93.183	ug/L	95
68) 1, 2-Di bromo-3-chloropropane	14.476	75	85814	101.672	ug/L	93
69) 1, 3, 5-Tri chlorobenzene	14.623	180	889814	94.149	ug/L	99
70) 1, 2, 4-tri chlorobenzene	15.129	180	737522	98.277	ug/L	97
71) Naphthalene	15.360	128	1411494	116.022	ug/L	100
72) 1, 2, 3-Tri chlorobenzene	15.549	180	651897	100.795	ug/L	97

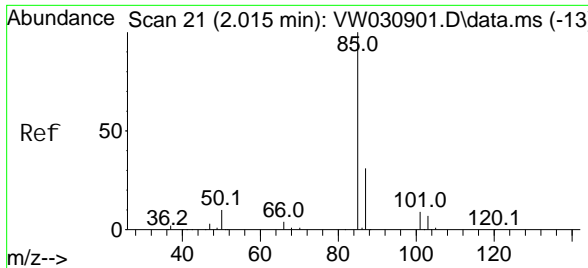
(#) = qualifier out of range (m) = manual integration (+) = signals summed

Data Path : Z:\voasrv\HPCHEM1\MSVOA_W\Data\VW110424\
 Data File : VW030903.D
 Acq On : 04 Nov 2024 11:51
 Operator : SY/MD
 Sample : VSTD100
 Misc : 5.00g/10mL/MSVOA_W/SOIL
 ALS Vial : 6 Sample Multiplier: 1

Instrument :
 MSVOA_W
 ClientSampleId :

Quant Time: Nov 05 00:11:34 2024
 Quant Method : Z:\voasrv\HPCHEM1\MSVOA_W\Method\SFAMWLM110424SMA.M
 Quant Title : SFAM01.0
 QLast Update : Tue Nov 05 00:08:46 2024
 Response via : Initial Calibration

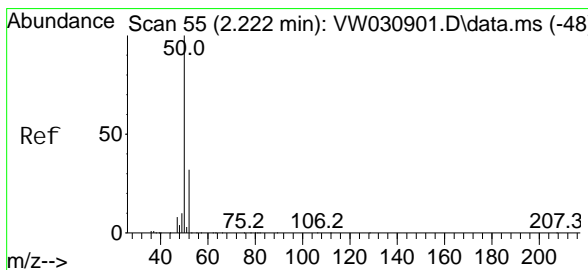
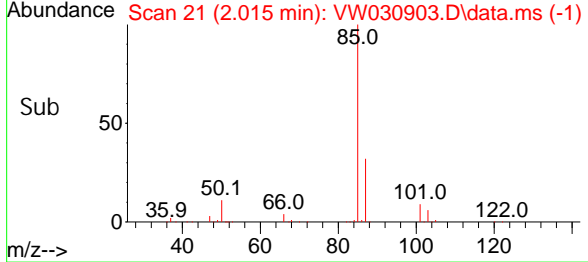
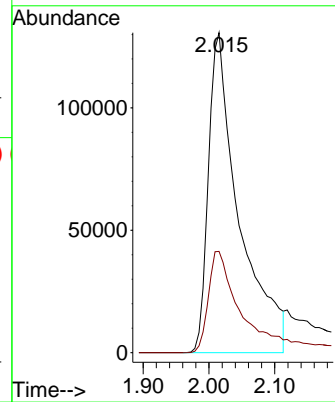
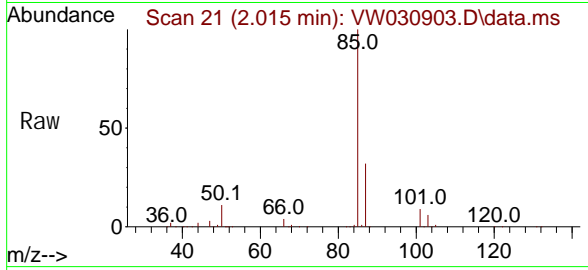




#2
 Di chl orodi fluoromethane
 Concen: 88.100 ug/L
 RT: 2.015 min Scan# 21
 Delta R.T. 0.000 min
 Lab File: VW030903.D
 Acq: 04 Nov 2024 11:51

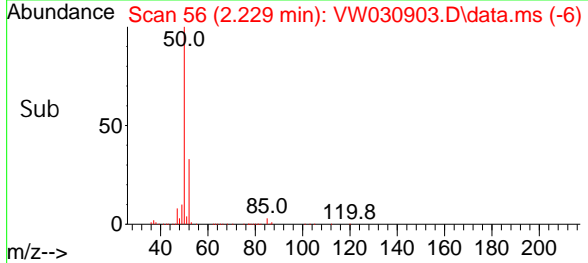
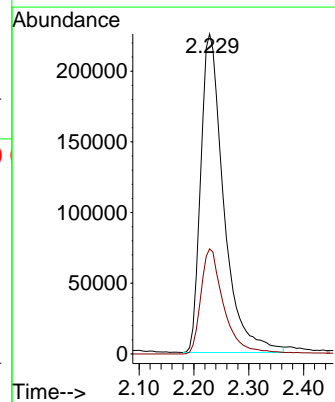
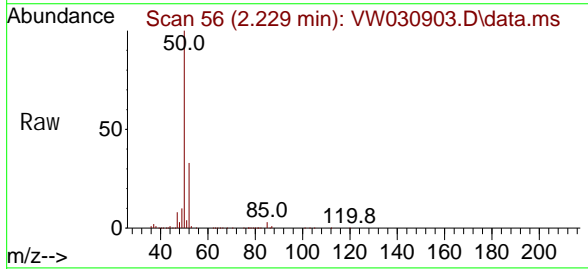
Instrument : MSVOA_W
 ClientSampleId :

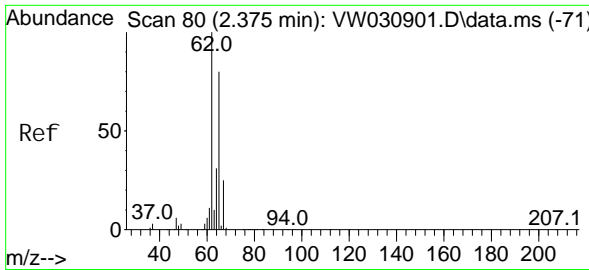
Tgt Ion: 85 Resp: 422238
 Ion Ratio Lower Upper
 85 100
 87 31.4 24.2 36.4



#3
 Chloromethane
 Concen: 94.912 ug/L
 RT: 2.229 min Scan# 56
 Delta R.T. 0.006 min
 Lab File: VW030903.D
 Acq: 04 Nov 2024 11:51

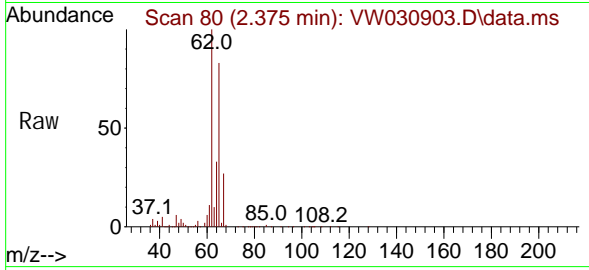
Tgt Ion: 50 Resp: 657636
 Ion Ratio Lower Upper
 50 100
 52 32.8 22.5 41.9



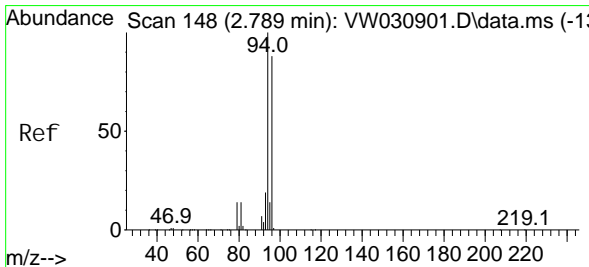
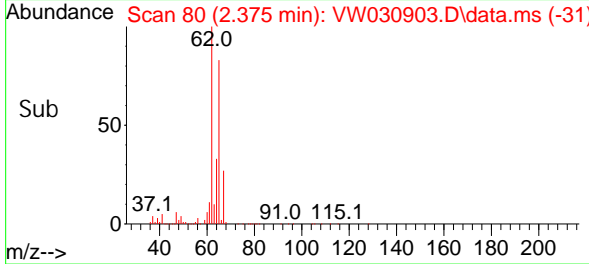
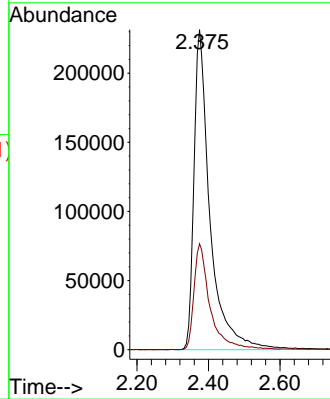


#5
 Vinyl chloride
 Concen: 87.254 ug/L
 RT: 2.375 min Scan# 80
 Delta R.T. 0.000 min
 Lab File: VW030903.D
 Acq: 04 Nov 2024 11:51

Instrument :
 MSVOA_W
 ClientSampleId :

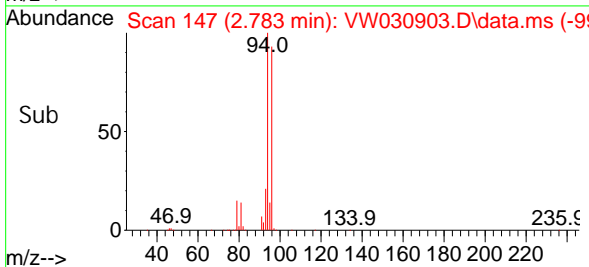
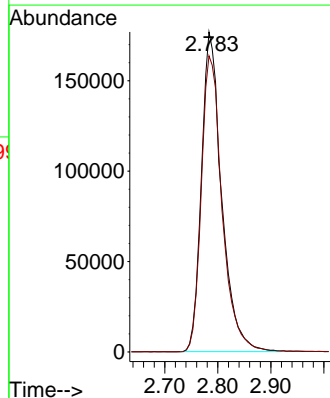
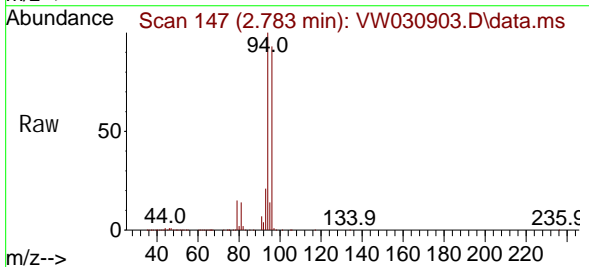


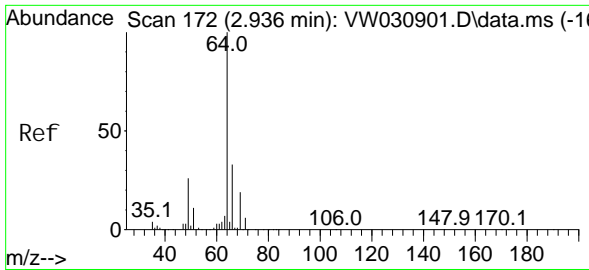
Tgt Ion: 62 Resp: 716509
 Ion Ratio Lower Upper
 62 100
 64 33.1 21.7 40.3



#6
 Bromomethane
 Concen: 86.664 ug/L
 RT: 2.783 min Scan# 147
 Delta R.T. -0.006 min
 Lab File: VW030903.D
 Acq: 04 Nov 2024 11:51

Tgt Ion: 94 Resp: 467268
 Ion Ratio Lower Upper
 94 100
 96 92.6 61.6 114.4

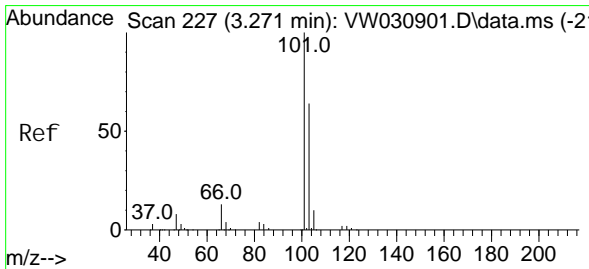
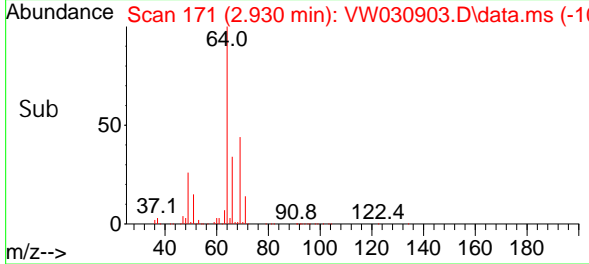
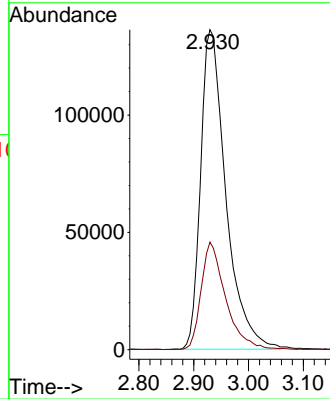
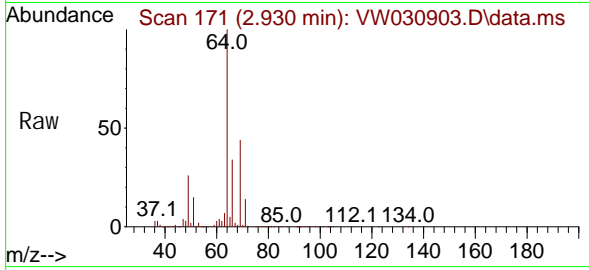




#8
 Chloroethane
 Concen: 87.549 ug/L
 RT: 2.930 min Scan# 171
 Delta R.T. -0.006 min
 Lab File: VW030903.D
 Acq: 04 Nov 2024 11:51

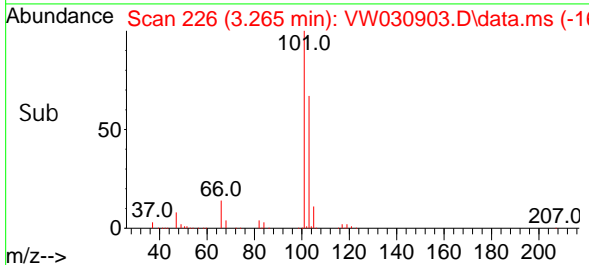
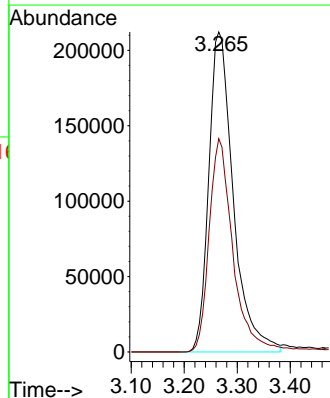
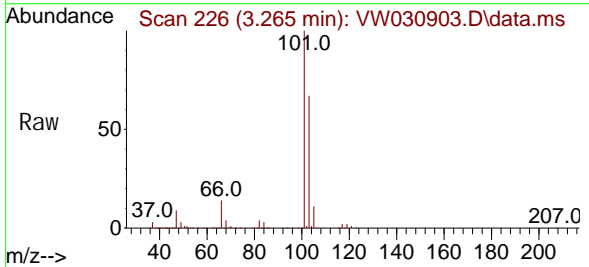
Instrument :
 MSVOA_W
 ClientSampleId :

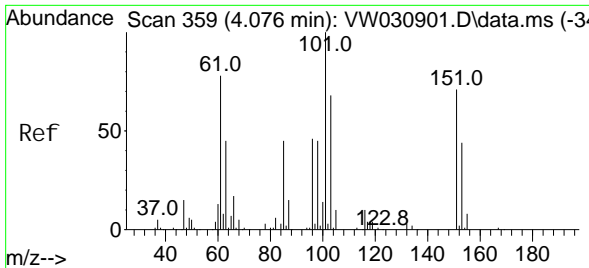
Tgt Ion: 64 Resp: 435826
 Ion Ratio Lower Upper
 64 100
 66 33.6 23.5 43.7



#9
 Trichlorofluoromethane
 Concen: 92.045 ug/L
 RT: 3.265 min Scan# 226
 Delta R.T. -0.006 min
 Lab File: VW030903.D
 Acq: 04 Nov 2024 11:51

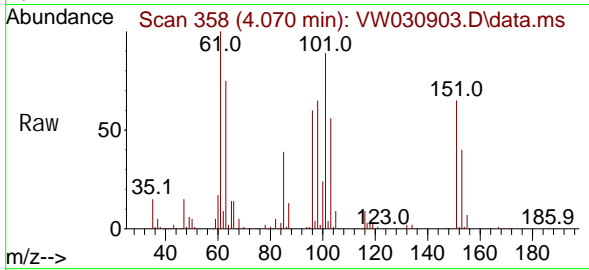
Tgt Ion: 101 Resp: 681038
 Ion Ratio Lower Upper
 101 100
 103 64.8 51.8 77.6



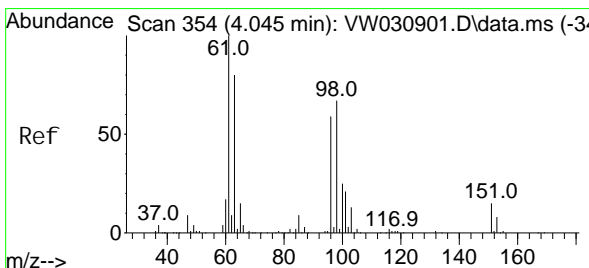
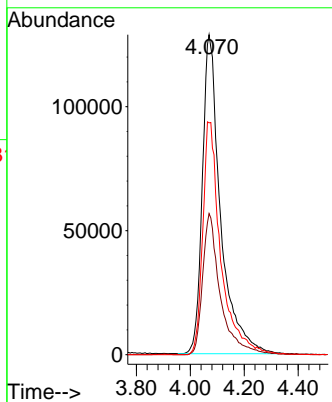
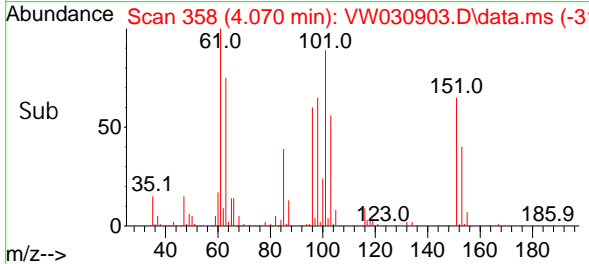


#10
 1,1,2-Tri chloro-1,2,2-tri fluoroethane
 Concen: 91.283 ug/L
 RT: 4.070 min Scan# 359
 Delta R.T. -0.006 min
 Lab File: VW030903.D
 Acq: 04 Nov 2024 11:51

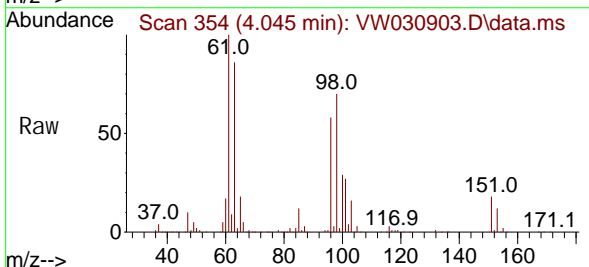
Instrument : MSVOA_W
 ClientSampleId :



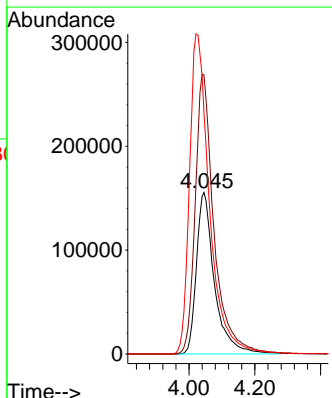
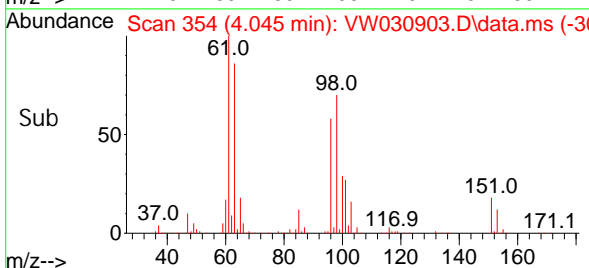
Tgt Ion: 101 Resp: 602910
 Ion Ratio Lower Upper
 101 100
 85 43.0 32.9 49.3
 151 69.1 51.0 76.6

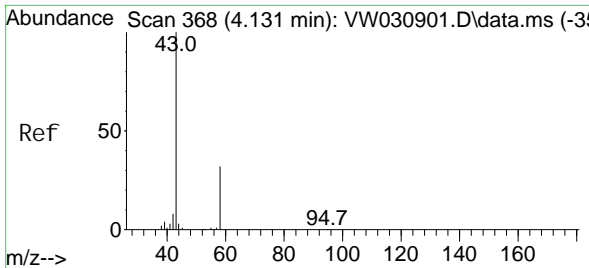


#12
 1,1-Di chloroethene
 Concen: 94.819 ug/L
 RT: 4.045 min Scan# 354
 Delta R.T. 0.000 min
 Lab File: VW030903.D
 Acq: 04 Nov 2024 11:51



Tgt Ion: 96 Resp: 591655
 Ion Ratio Lower Upper
 96 100
 61 172.9 118.9 220.7
 63 149.5 97.8 181.6

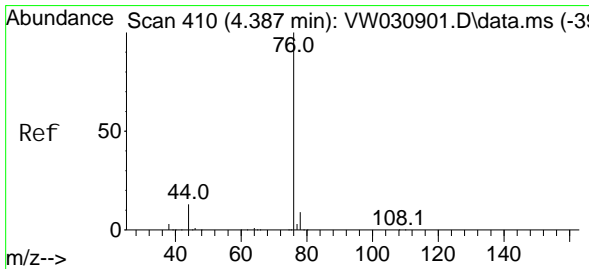
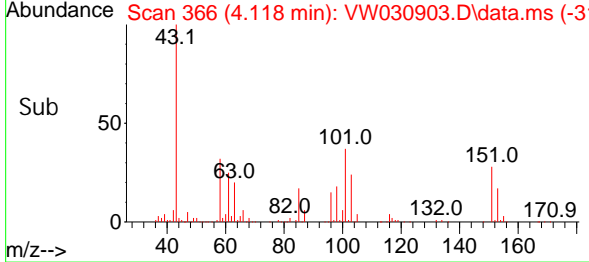
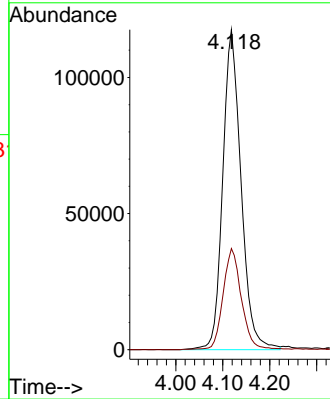
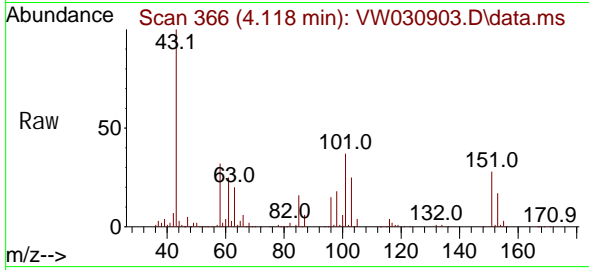




#13
 Acetone
 Concen: 208.076 ug/L
 RT: 4.118 min Scan# 366
 Delta R.T. -0.012 min
 Lab File: VW030903.D
 Acq: 04 Nov 2024 11:51

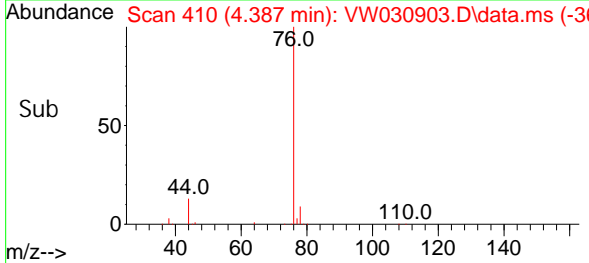
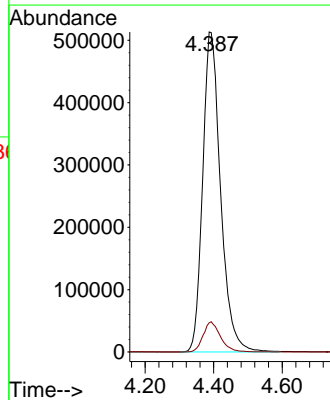
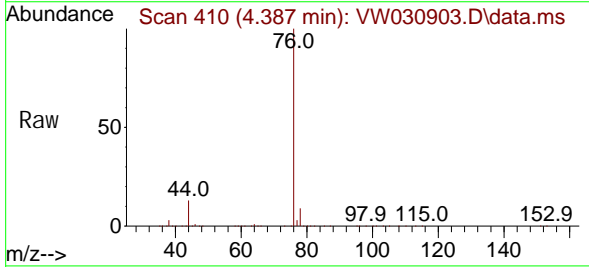
Instrument : MSVOA_W
 ClientSampleId :

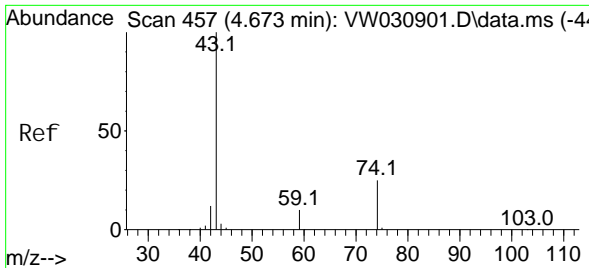
Tgt Ion: 43 Resp: 318669
 Ion Ratio Lower Upper
 43 100
 58 31.6 0.0 62.6



#14
 Carbon di sul fi de
 Concen: 90.930 ug/L
 RT: 4.387 min Scan# 410
 Delta R.T. 0.000 min
 Lab File: VW030903.D
 Acq: 04 Nov 2024 11:51

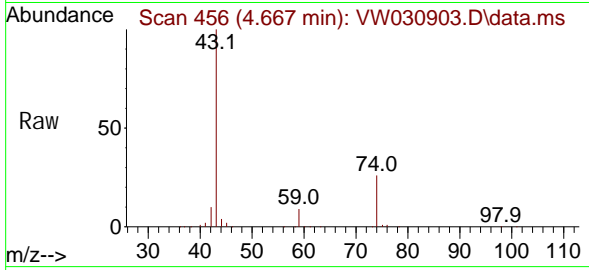
Tgt Ion: 76 Resp: 1865203
 Ion Ratio Lower Upper
 76 100
 78 9.1 7.1 10.7



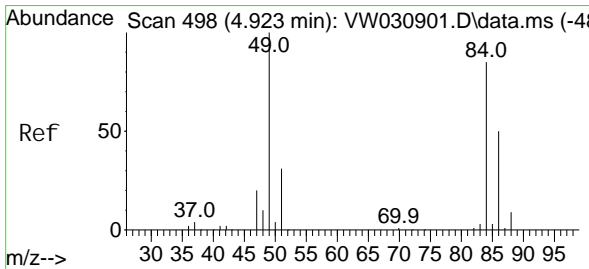
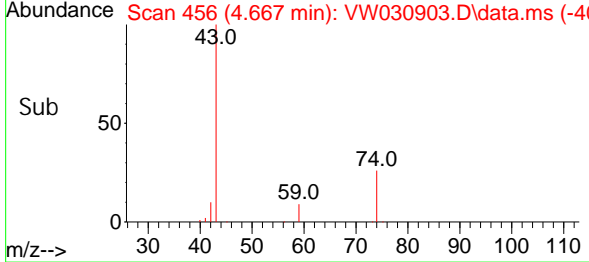
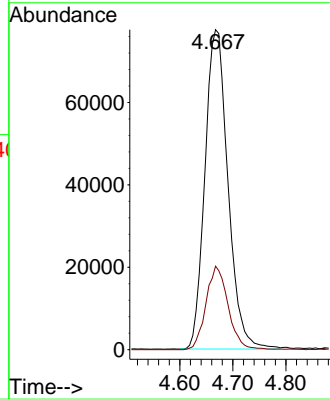


#15
Methyl Acetate
Concen: 100.204 ug/L
RT: 4.667 min Scan# 456
Delta R.T. -0.006 min
Lab File: VW030903.D
Acq: 04 Nov 2024 11:51

Instrument : MSVOA_W
ClientSampleId :

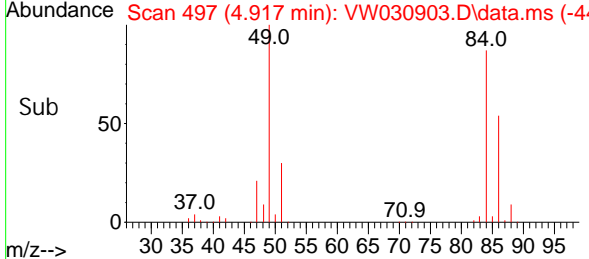
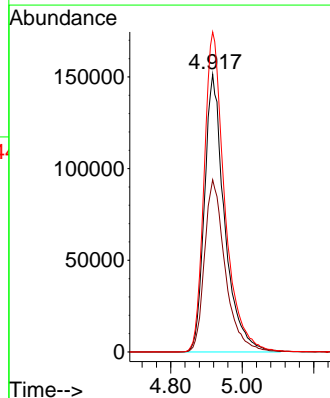
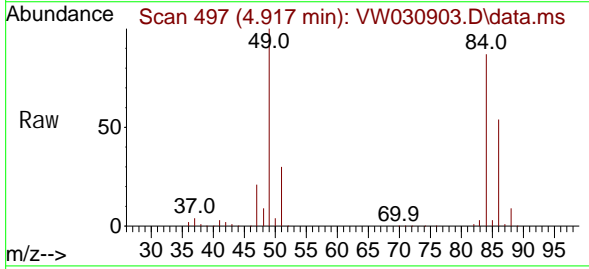


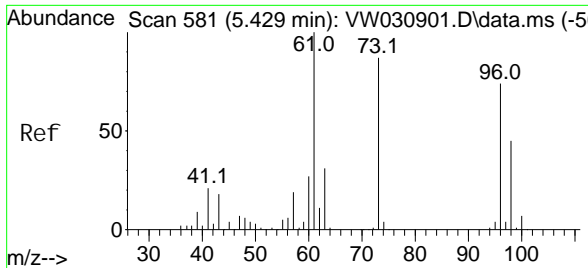
Tgt Ion: 43 Resp: 233897
Ion Ratio Lower Upper
43 100
74 25.1 20.2 30.2



#16
Methylene chloride
Concen: 86.580 ug/L
RT: 4.917 min Scan# 497
Delta R.T. -0.006 min
Lab File: VW030903.D
Acq: 04 Nov 2024 11:51

Tgt Ion: 84 Resp: 590900
Ion Ratio Lower Upper
84 100
86 62.0 41.8 77.6
49 115.3 82.8 153.8



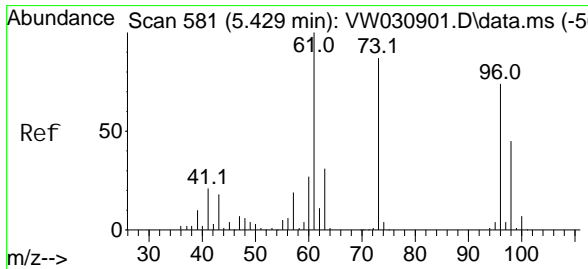
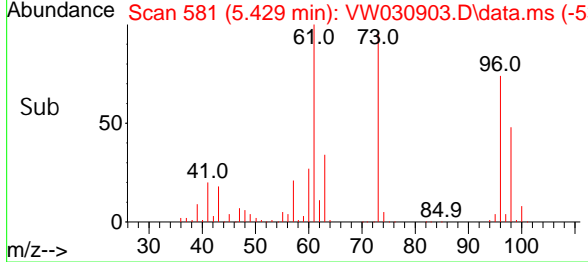
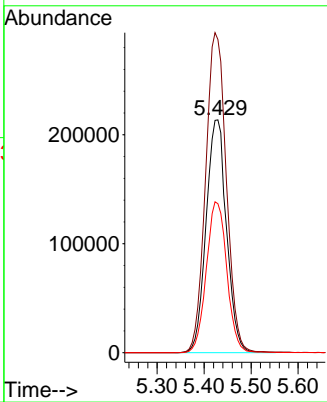
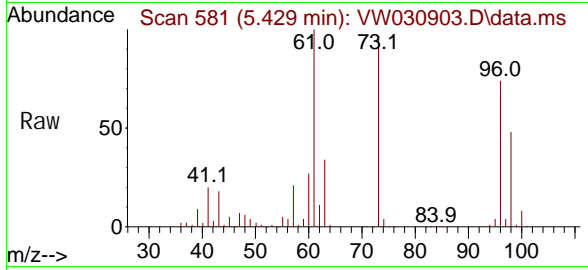


#17
 trans-1, 2-Di chloroethene
 Concen: 94.242 ug/L
 RT: 5.429 min Scan# 581
 Delta R.T. 0.000 min
 Lab File: VW030903.D
 Acq: 04 Nov 2024 11:51

Instrument : MSVOA_W
 ClientSampleId :

Tgt Ion: 96 Resp: 645126

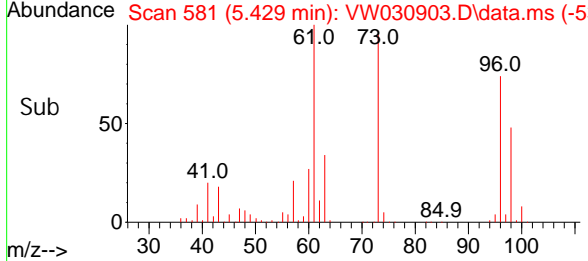
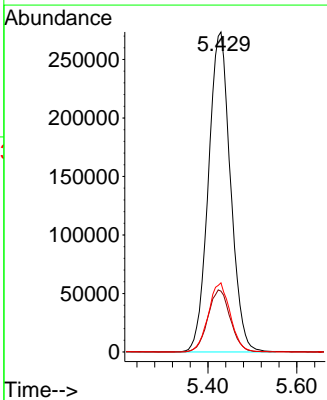
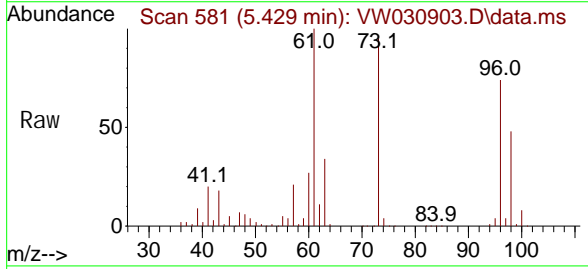
Ion	Ratio	Lower	Upper
96	100		
61	134.5	95.2	176.8
98	64.0	42.6	79.2

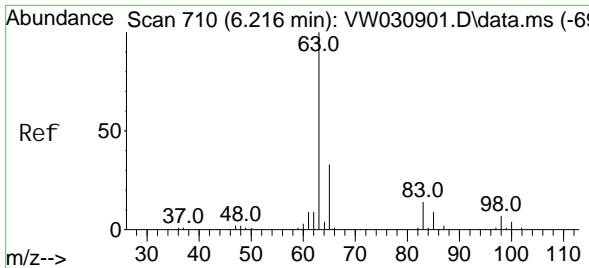


#18
 Methyl tert-butyl Ether
 Concen: 101.719 ug/L
 RT: 5.429 min Scan# 581
 Delta R.T. 0.000 min
 Lab File: VW030903.D
 Acq: 04 Nov 2024 11:51

Tgt Ion: 73 Resp: 939839

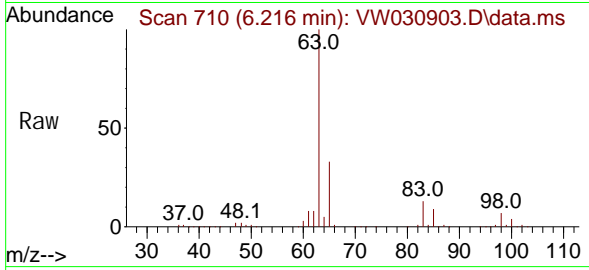
Ion	Ratio	Lower	Upper
73	100		
43	19.6	16.2	24.2
57	21.6	17.3	25.9



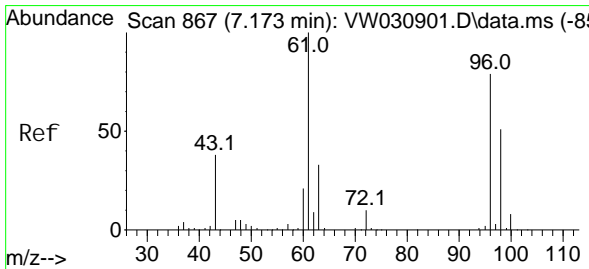
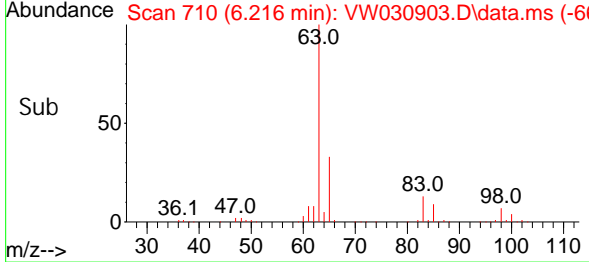
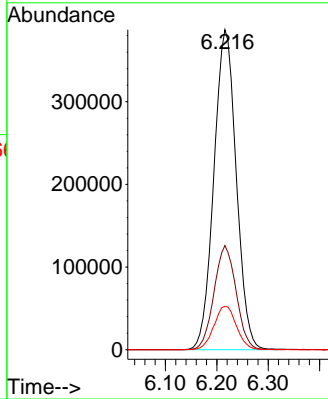


#19
 1,1-Dichloroethane
 Concen: 91.512 ug/L
 RT: 6.216 min Scan# 710
 Delta R.T. 0.000 min
 Lab File: VW030903.D
 Acq: 04 Nov 2024 11:51

Instrument :
 MSVOA_W
 ClientSampleId :

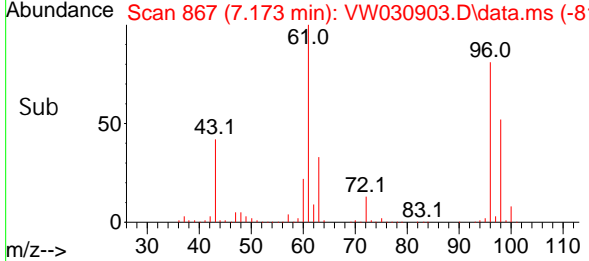
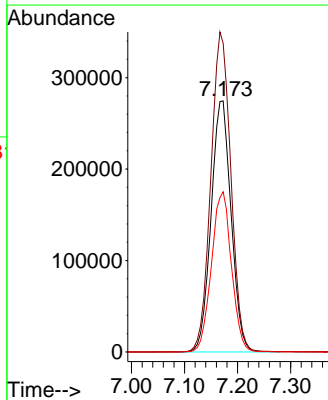
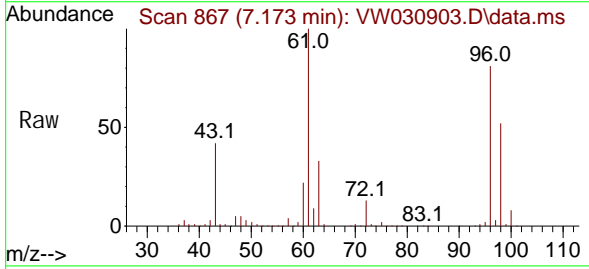


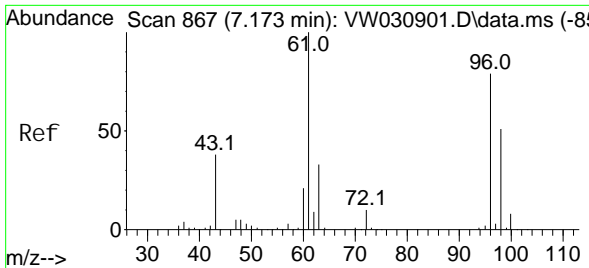
Tgt Ion: 63 Resp: 1168979
 Ion Ratio Lower Upper
 63 100
 65 32.5 23.0 42.8
 83 13.5 9.8 18.2



#20
 cis-1,2-Dichloroethene
 Concen: 99.159 ug/L
 RT: 7.173 min Scan# 867
 Delta R.T. 0.000 min
 Lab File: VW030903.D
 Acq: 04 Nov 2024 11:51

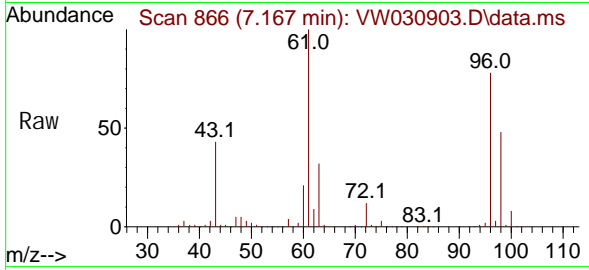
Tgt Ion: 96 Resp: 720092
 Ion Ratio Lower Upper
 96 100
 61 122.9 89.2 165.8
 98 63.8 45.1 83.9



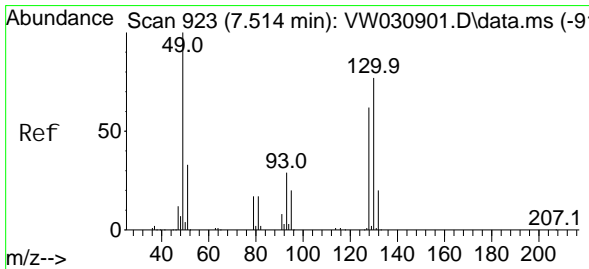
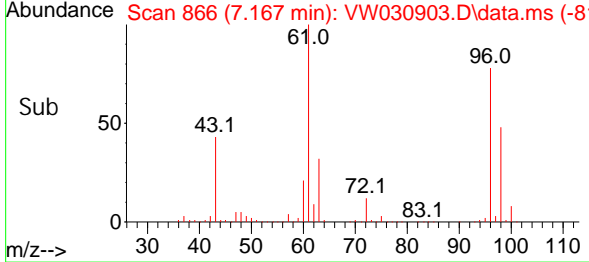
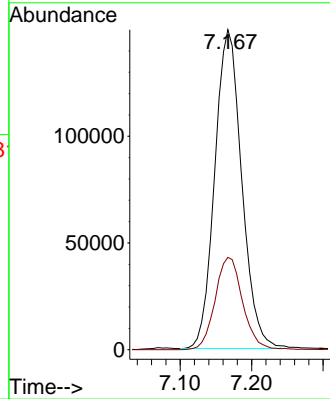


#22
 2-Butanone
 Concen: 221.306 ug/L
 RT: 7.167 min Scan# 80
 Delta R.T. -0.006 min
 Lab File: VW030903.D
 Acq: 04 Nov 2024 11:51

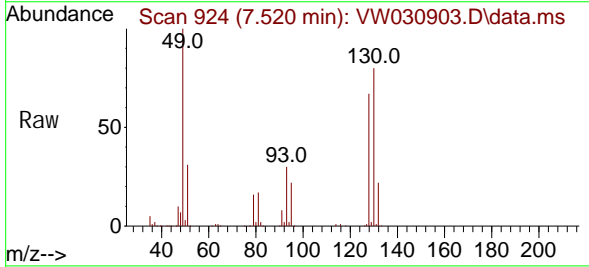
Instrument :
 MSVOA_W
 ClientSampleId :



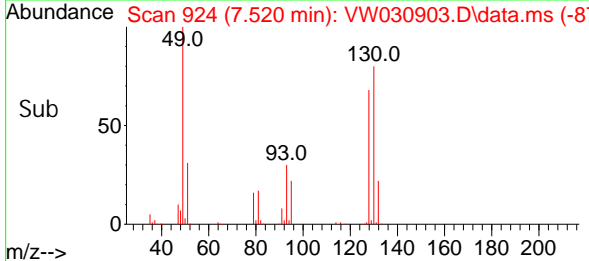
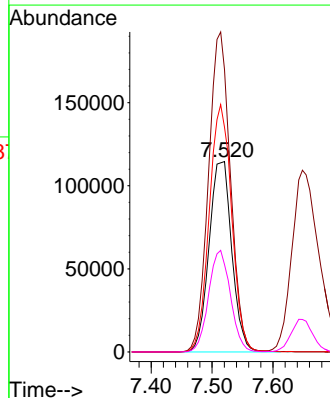
Tgt Ion: 43 Resp: 391214
 Ion Ratio Lower Upper
 43 100
 72 29.5 14.5 43.6

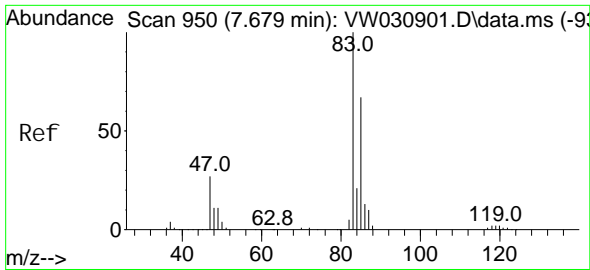


#23
 Bromochloromethane
 Concen: 93.608 ug/L
 RT: 7.520 min Scan# 924
 Delta R.T. 0.006 min
 Lab File: VW030903.D
 Acq: 04 Nov 2024 11:51



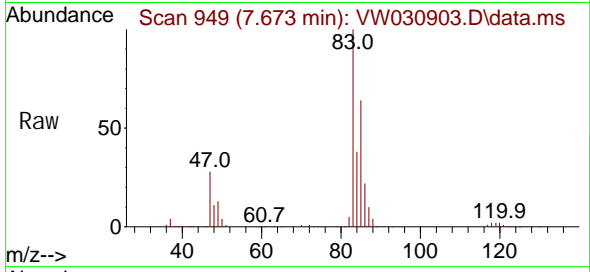
Tgt Ion: 128 Resp: 297703
 Ion Ratio Lower Upper
 128 100
 49 148.2 112.4 208.8
 130 117.9 86.2 160.0
 51 45.9 42.1 63.1



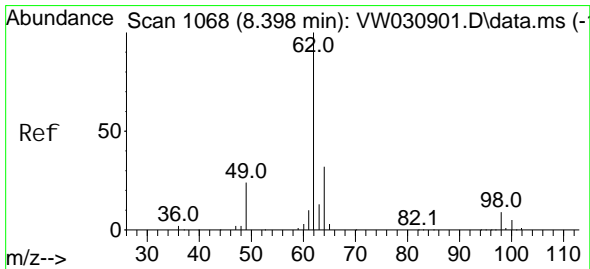
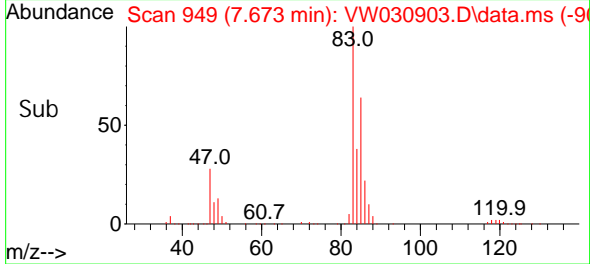
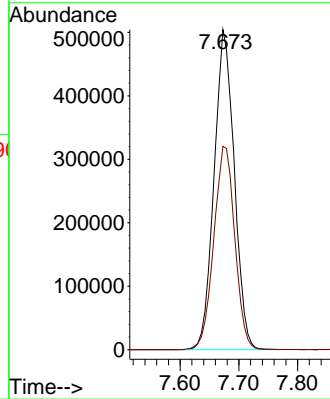


#25
 Chloroform
 Concen: 89.494 ug/L
 RT: 7.673 min Scan# 949
 Delta R.T. -0.006 min
 Lab File: VW030903.D
 Acq: 04 Nov 2024 11:51

Instrument : MSVOA_W
 ClientSampleId :

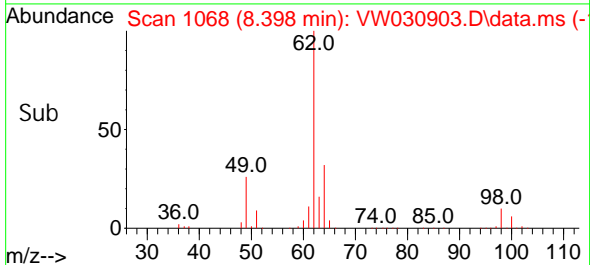
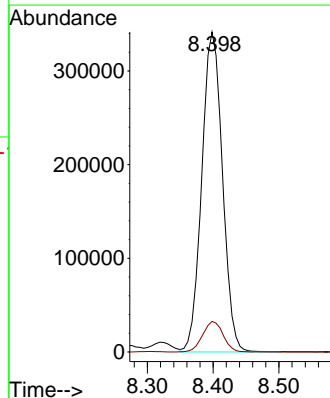
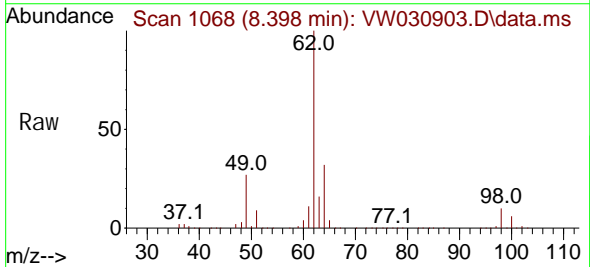


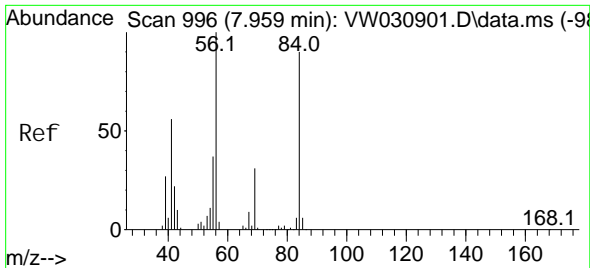
Tgt Ion: 83 Resp: 1202866
 Ion Ratio Lower Upper
 83 100
 85 63.6 47.2 87.6



#27
 1,2-Di chloroethane
 Concen: 89.339 ug/L
 RT: 8.398 min Scan# 1068
 Delta R.T. 0.000 min
 Lab File: VW030903.D
 Acq: 04 Nov 2024 11:51

Tgt Ion: 62 Resp: 747824
 Ion Ratio Lower Upper
 62 100
 98 9.5 7.1 10.7



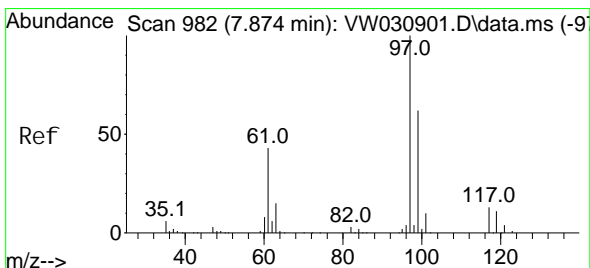
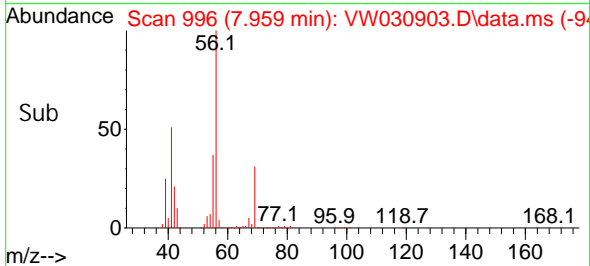
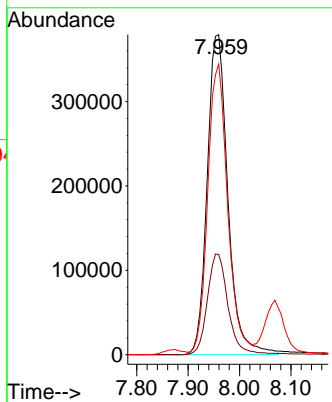
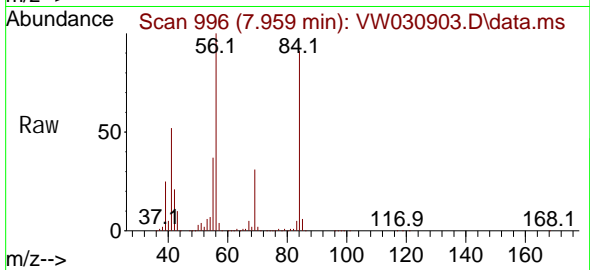


#29
 Cycl ohexane
 Concen: 101.292 ug/L
 RT: 7.959 min Scan# 996
 Delta R.T. 0.000 min
 Lab File: VW030903.D
 Acq: 04 Nov 2024 11:51

Instrument : MSVOA_W
 ClientSampleId :

Tgt Ion: 56 Resp: 1060282

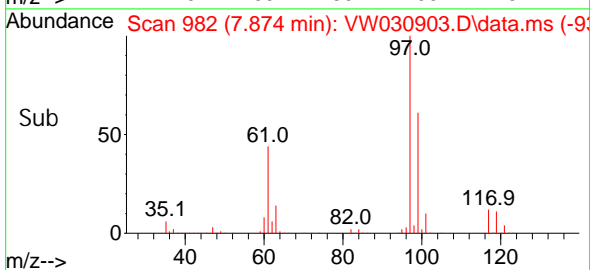
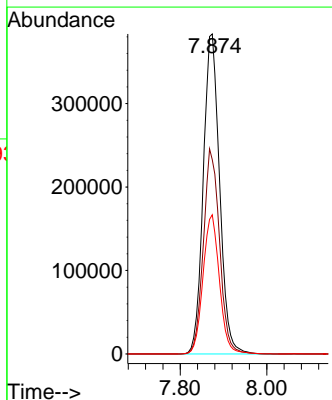
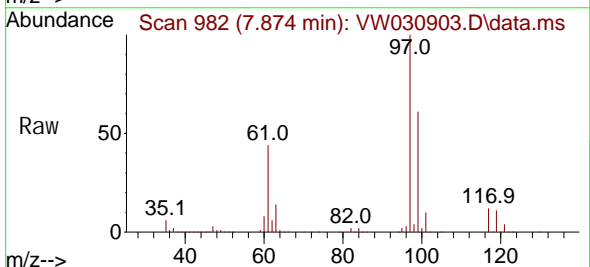
Ion	Ratio	Lower	Upper
56	100		
69	31.1	24.8	37.2
84	87.1	69.5	104.3

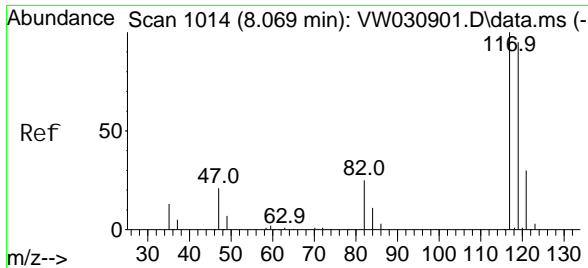


#30
 1,1,1-Tri chloroethane
 Concen: 89.379 ug/L
 RT: 7.874 min Scan# 982
 Delta R.T. 0.000 min
 Lab File: VW030903.D
 Acq: 04 Nov 2024 11:51

Tgt Ion: 97 Resp: 1002854

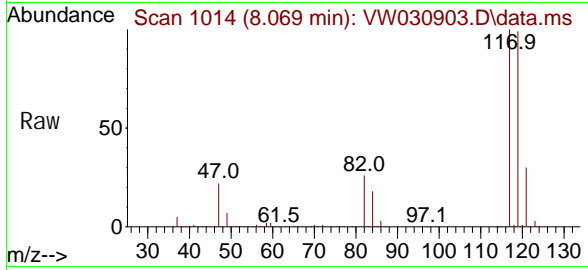
Ion	Ratio	Lower	Upper
97	100		
99	63.4	51.3	76.9
61	43.9	36.2	54.4



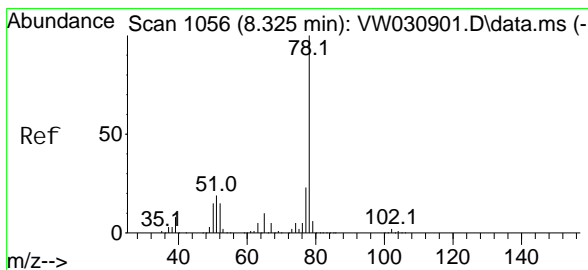
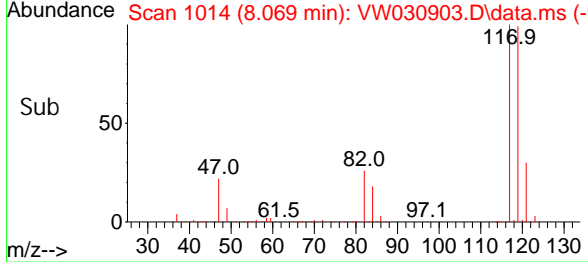
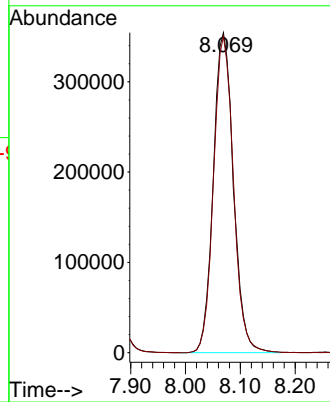


#31
 Carbon tetrachloride
 Concen: 89.526 ug/L
 RT: 8.069 min Scan# 1014
 Delta R.T. 0.000 min
 Lab File: VW030903.D
 Acq: 04 Nov 2024 11:51

Instrument : MSVOA_W
 ClientSampleId :

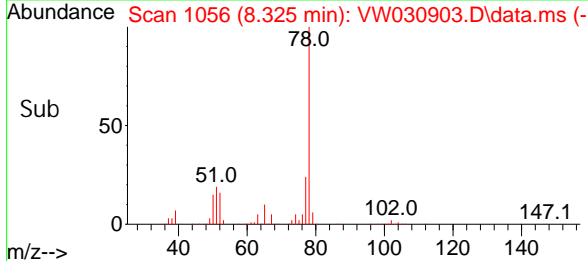
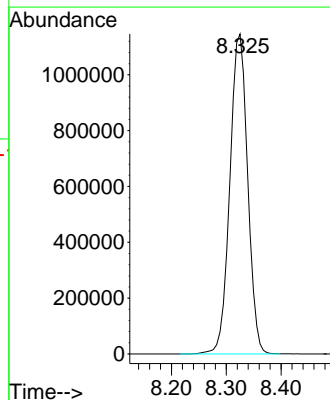
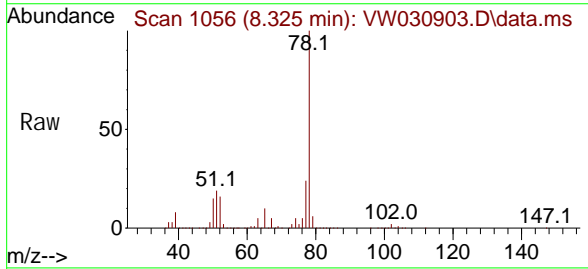


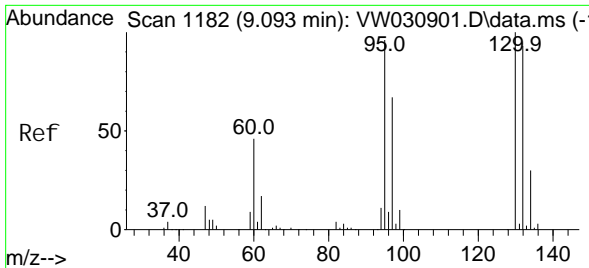
Tgt Ion: 117 Resp: 902622
 Ion Ratio Lower Upper
 117 100
 119 97.8 76.2 114.2



#33
 Benzene
 Concen: 91.844 ug/L
 RT: 8.325 min Scan# 1056
 Delta R.T. 0.000 min
 Lab File: VW030903.D
 Acq: 04 Nov 2024 11:51

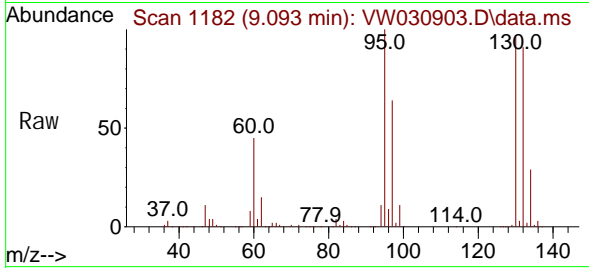
Tgt Ion: 78 Resp: 2585753



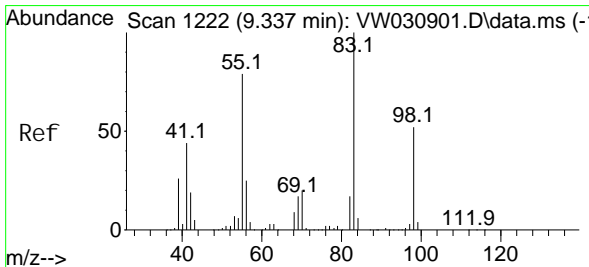
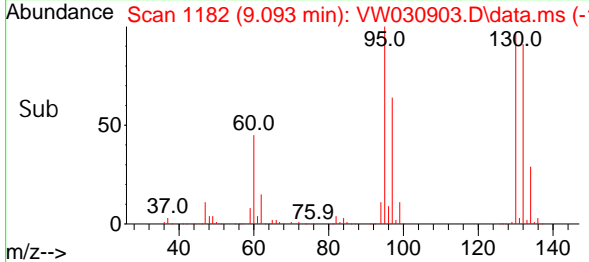
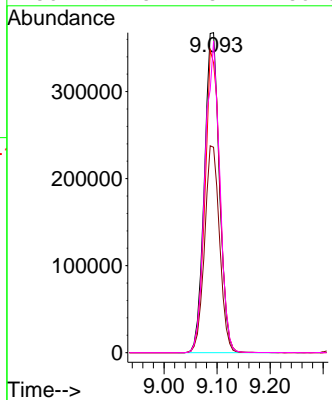


#34
 Trichloroethene
 Concen: 93.240 ug/L
 RT: 9.093 min Scan# 1182
 Delta R.T. 0.000 min
 Lab File: VW030903.D
 Acq: 04 Nov 2024 11:51

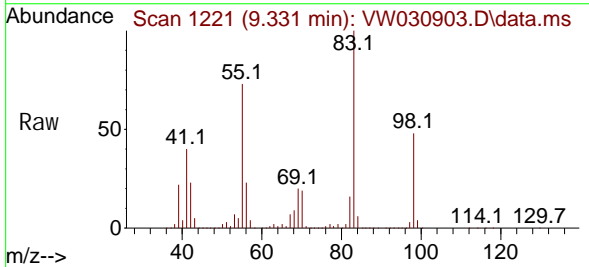
Instrument : MSVOA_W
 ClientSampleId :



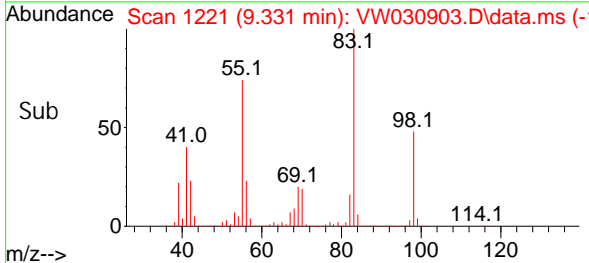
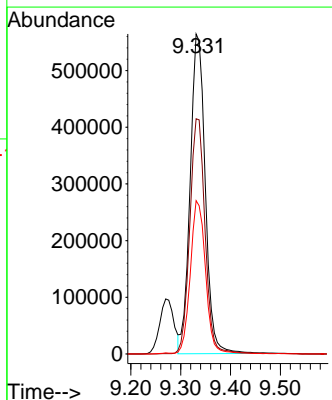
Tgt Ion: 95 Resp: 723867
 Ion Ratio Lower Upper
 95 100
 97 64.2 48.9 90.7
 132 90.6 67.7 125.7
 130 97.3 73.1 135.8

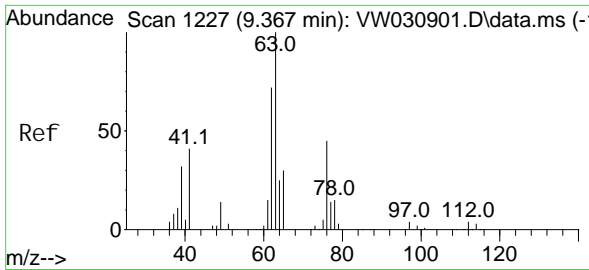


#35
 Methyl cycl ohexane
 Concen: 96.338 ug/L
 RT: 9.331 min Scan# 1221
 Delta R.T. -0.006 min
 Lab File: VW030903.D
 Acq: 04 Nov 2024 11:51



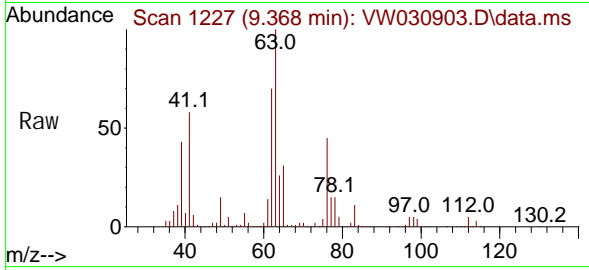
Tgt Ion: 83 Resp: 1185402
 Ion Ratio Lower Upper
 83 100
 55 74.7 62.8 94.2
 98 48.0 39.4 59.2



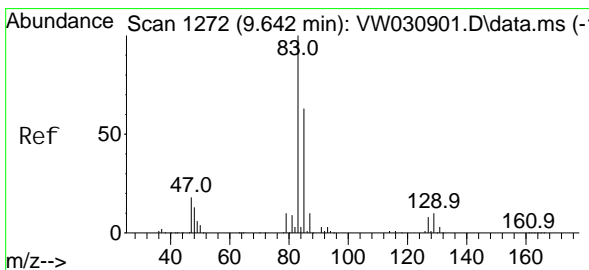
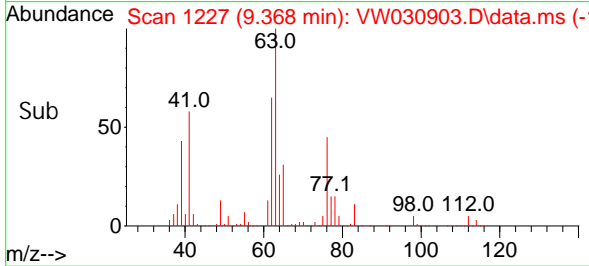
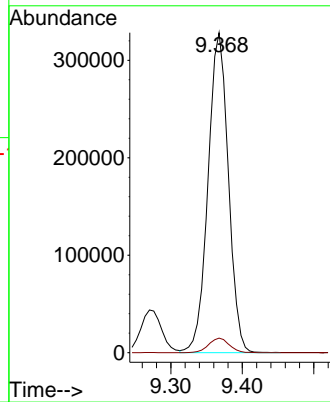


#37
 1, 2-Di chl oropropane
 Concen: 92.159 ug/L
 RT: 9.368 min Scan# 11
 Delta R. T. 0.000 min
 Lab File: VW030903.D
 Acq: 04 Nov 2024 11:51

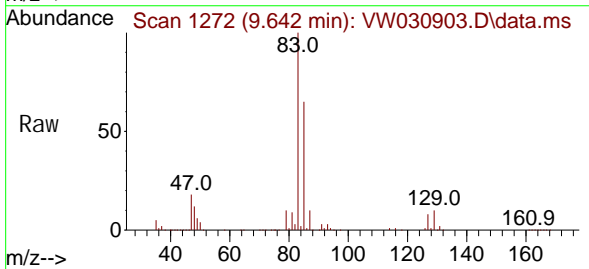
Instrument :
 MSVOA_W
 ClientSampleId :



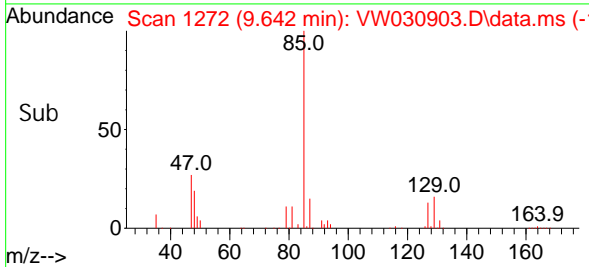
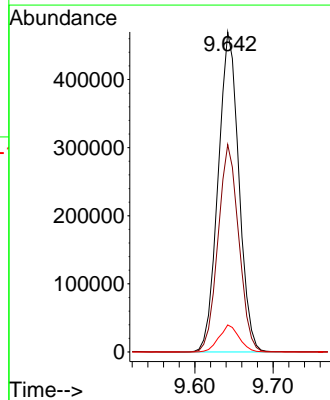
Tgt Ion: 63 Resp: 648445
 Ion Ratio Lower Upper
 63 100
 112 4.6 3.5 5.3

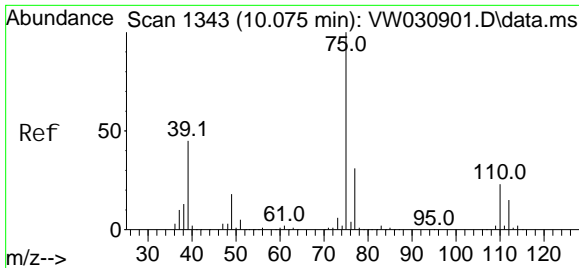


#38
 Bromodi chl oromethane
 Concen: 93.490 ug/L
 RT: 9.642 min Scan# 1272
 Delta R. T. 0.000 min
 Lab File: VW030903.D
 Acq: 04 Nov 2024 11:51



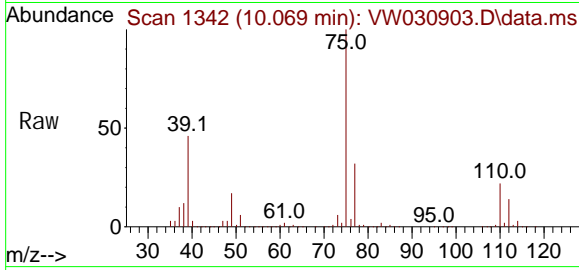
Tgt Ion: 83 Resp: 863862
 Ion Ratio Lower Upper
 83 100
 85 64.8 44.1 81.9
 127 8.4 6.4 9.6



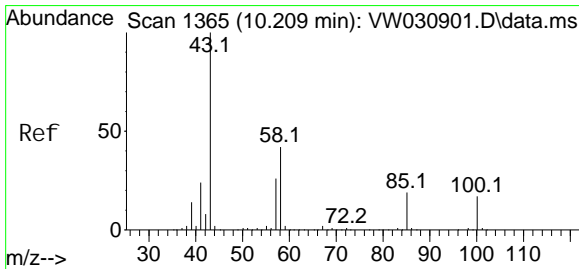
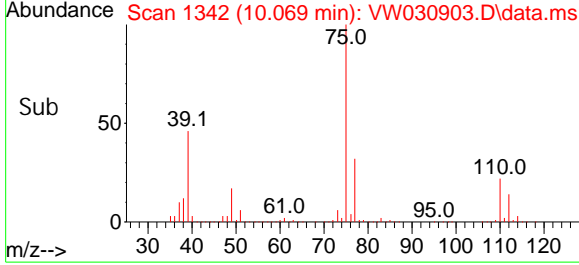
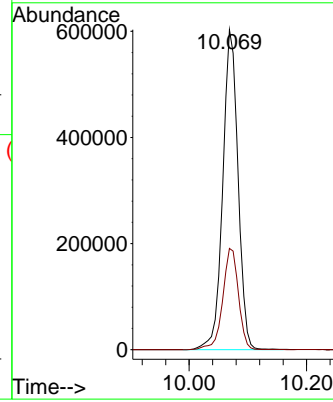


#39
 cis-1,3-Dichloropropene
 Concen: 103.322 ug/L
 RT: 10.069 min Scan# 1342
 Delta R.T. -0.006 min
 Lab File: VW030903.D
 Acq: 04 Nov 2024 11:51

Instrument :
 MSVOA_W
 ClientSampleId :

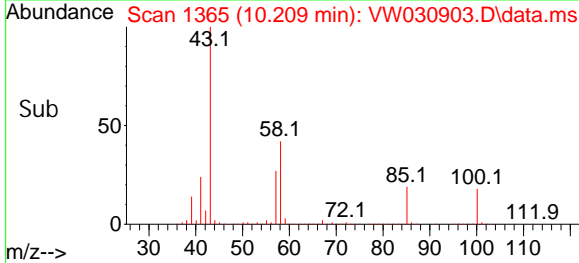
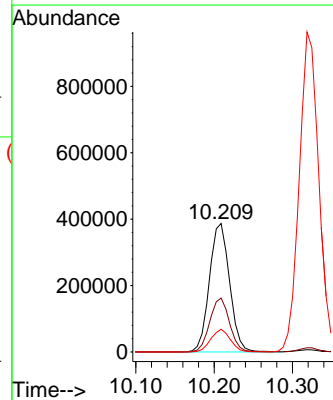
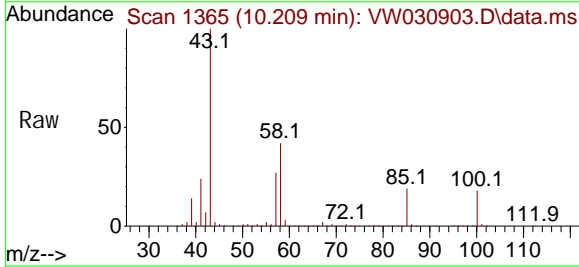


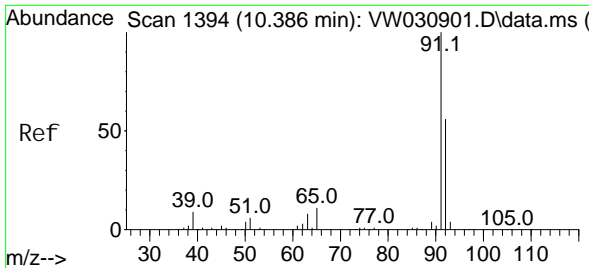
Tgt Ion: 75 Resp: 1087525
 Ion Ratio Lower Upper
 75 100
 77 31.7 21.3 39.6



#40
 4-Methyl-2-pentanone
 Concen: 216.859 ug/L
 RT: 10.209 min Scan# 1365
 Delta R.T. 0.000 min
 Lab File: VW030903.D
 Acq: 04 Nov 2024 11:51

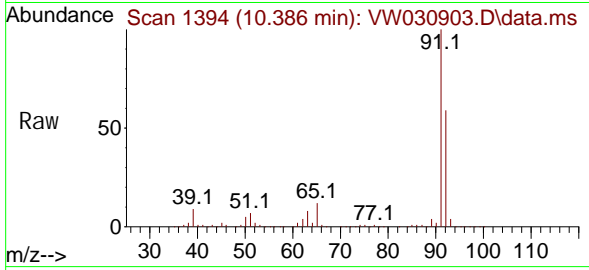
Tgt Ion: 43 Resp: 692337
 Ion Ratio Lower Upper
 43 100
 58 41.0 32.2 48.4
 100 17.0 13.3 19.9



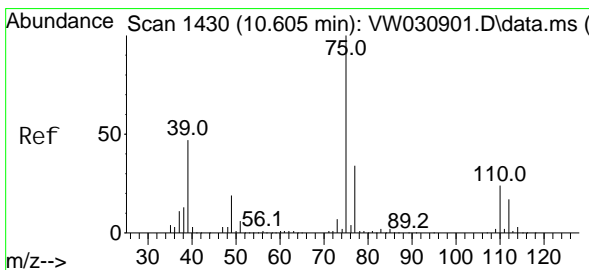
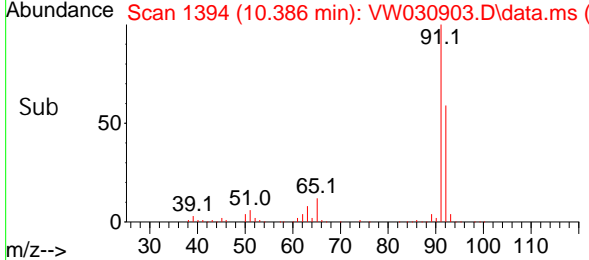
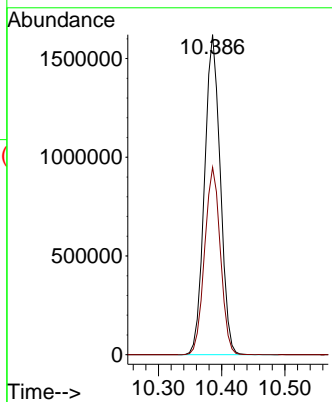


#42
 Tol uene
 Concen: 94.068 ug/L
 RT: 10.386 min Scan# 1394
 Delta R.T. 0.000 min
 Lab File: VW030903.D
 Acq: 04 Nov 2024 11:51

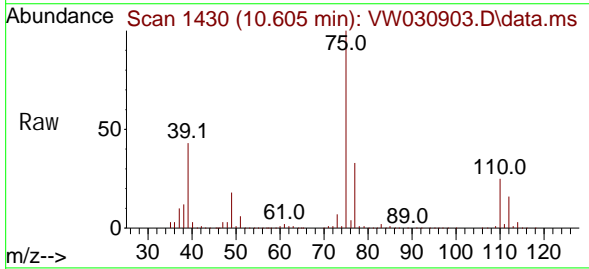
Instrument : MSVOA_W
 ClientSampleId :



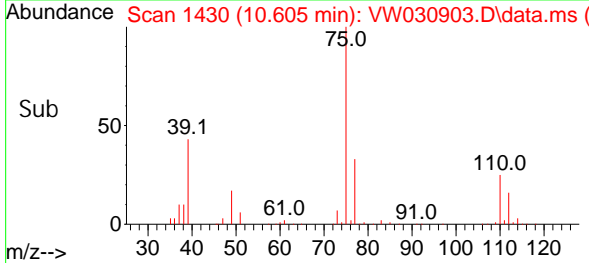
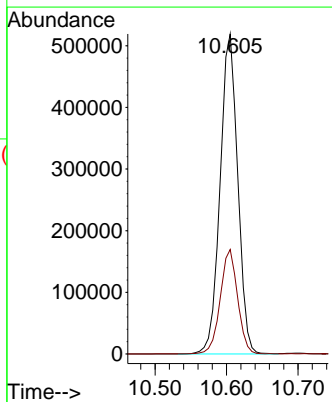
Tgt Ion: 91 Resp: 2804480
 Ion Ratio Lower Upper
 91 100
 92 58.5 39.4 73.2

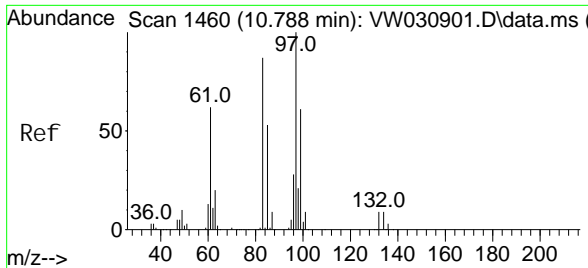


#44
 trans-1,3-Di chl oroprene
 Concen: 101.605 ug/L
 RT: 10.605 min Scan# 1430
 Delta R.T. 0.000 min
 Lab File: VW030903.D
 Acq: 04 Nov 2024 11:51



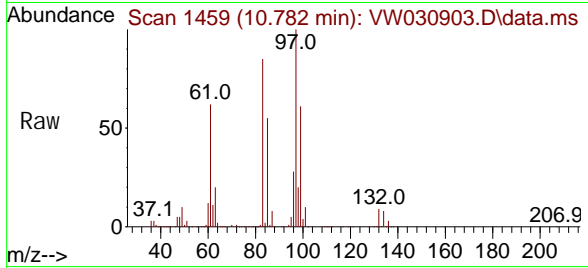
Tgt Ion: 75 Resp: 888454
 Ion Ratio Lower Upper
 75 100
 77 32.6 23.6 43.8





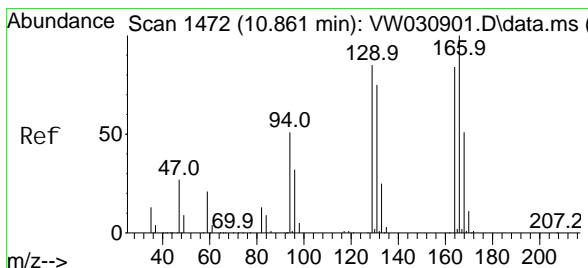
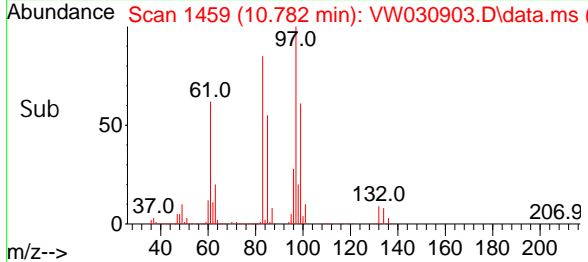
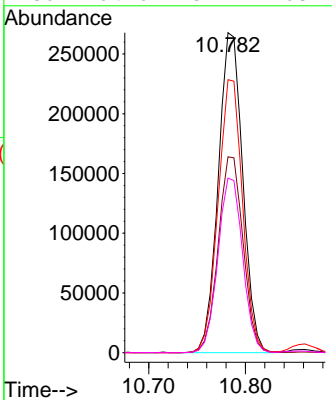
#45
 1,1,2-Trichloroethane
 Concen: 93.270 ug/L
 RT: 10.782 min Scan# 1459
 Delta R.T. -0.006 min
 Lab File: VW030903.D
 Acq: 04 Nov 2024 11:51

Instrument : MSVOA_W
 ClientSampleId :



Tgt Ion: 97 Resp: 471051

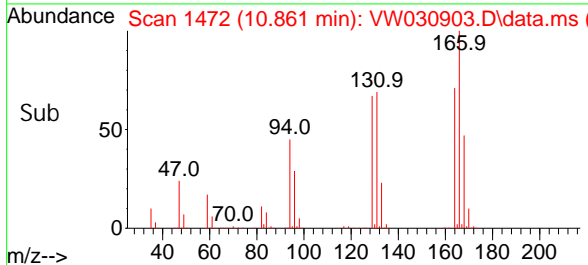
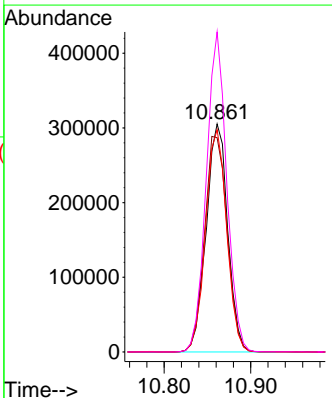
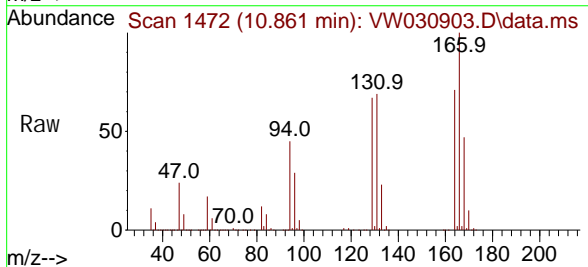
Ion	Ratio	Lower	Upper
97	100		
99	61.2	42.8	79.4
83	85.3	60.6	112.6
85	54.6	37.1	68.9

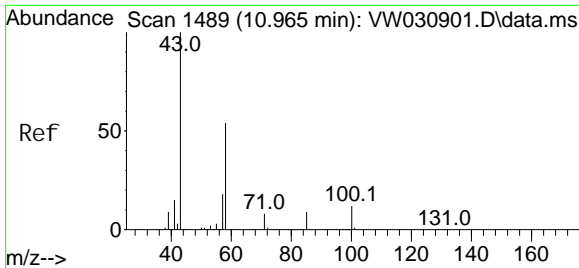


#46
 Tetrachloroethene
 Concen: 88.919 ug/L
 RT: 10.861 min Scan# 1472
 Delta R.T. 0.000 min
 Lab File: VW030903.D
 Acq: 04 Nov 2024 11:51

Tgt Ion: 164 Resp: 527733

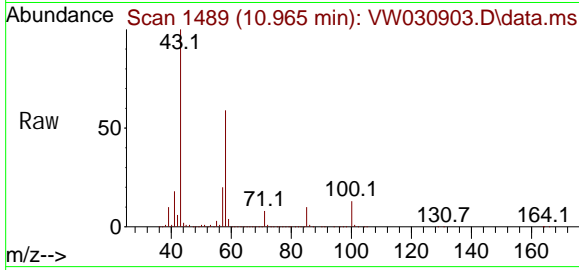
Ion	Ratio	Lower	Upper
164	100		
129	93.9	71.1	132.1
131	97.5	62.6	116.3
166	140.4	83.7	155.5





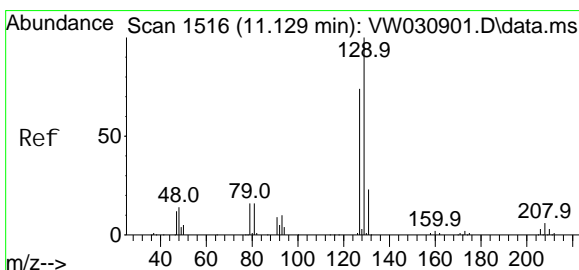
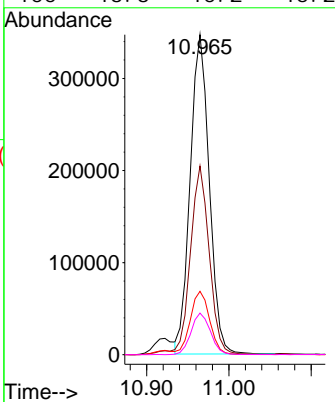
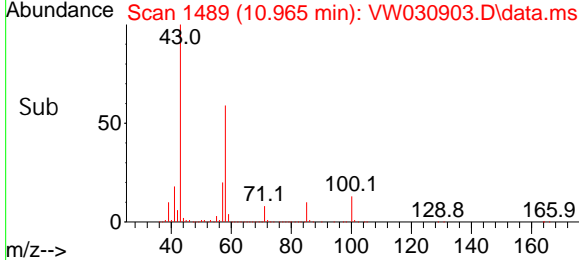
#48
 2-Hexanone
 Concen: 228.213 ug/L
 RT: 10.965 min Scan# 1489
 Delta R.T. 0.000 min
 Lab File: VW030903.D
 Acq: 04 Nov 2024 11:51

Instrument : MSVOA_W
 ClientSampleId :

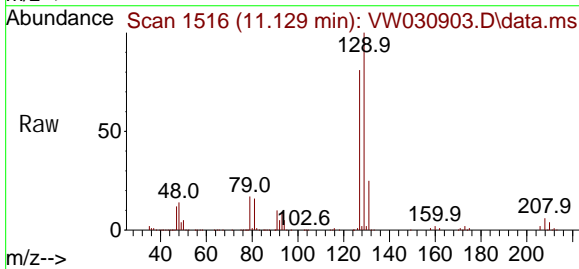


Tgt Ion: 43 Resp: 558683

Ion	Ratio	Lower	Upper
43	100		
58	58.1	43.8	65.8
57	19.9	15.4	23.2
100	13.3	10.2	15.2

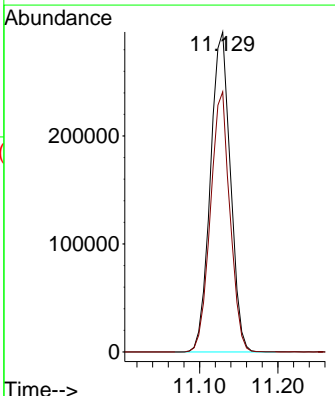
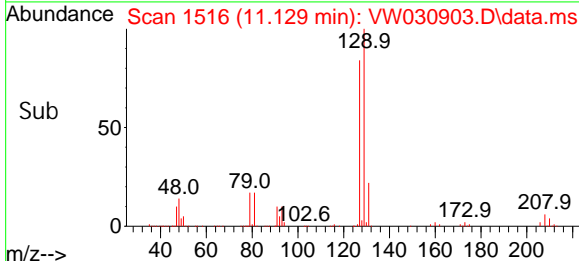


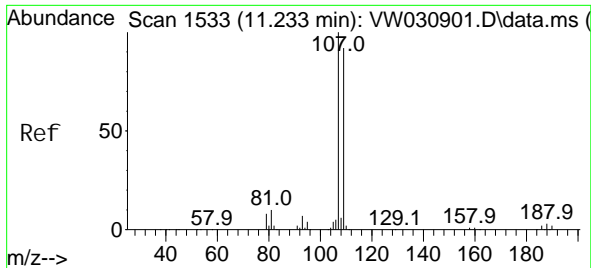
#49
 Di bromochloromethane
 Concen: 95.499 ug/L
 RT: 11.129 min Scan# 1516
 Delta R.T. 0.000 min
 Lab File: VW030903.D
 Acq: 04 Nov 2024 11:51



Tgt Ion: 129 Resp: 525864

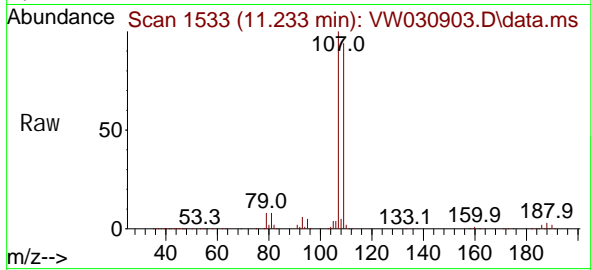
Ion	Ratio	Lower	Upper
129	100		
127	81.3	52.1	96.7



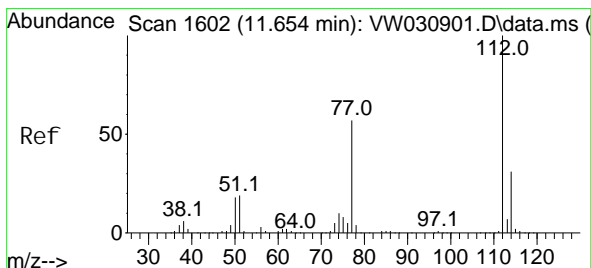
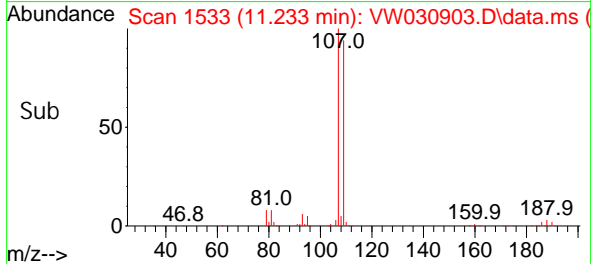
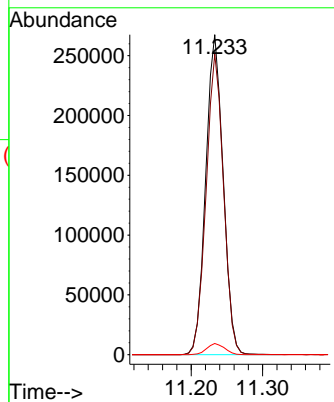


#50
 1, 2-Di bromoethane
 Concen: 97.429 ug/L
 RT: 11.233 min Scan# 1533
 Delta R.T. 0.000 min
 Lab File: VW030903.D
 Acq: 04 Nov 2024 11:51

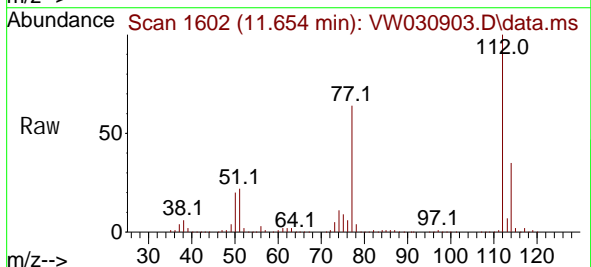
Instrument : MSVOA_W
 ClientSampleId :



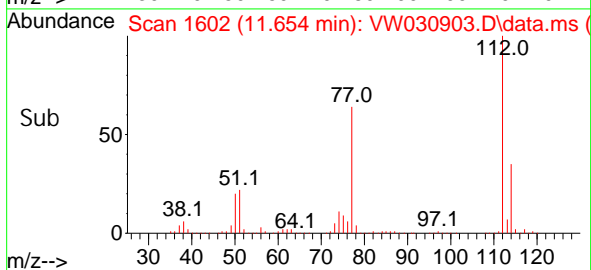
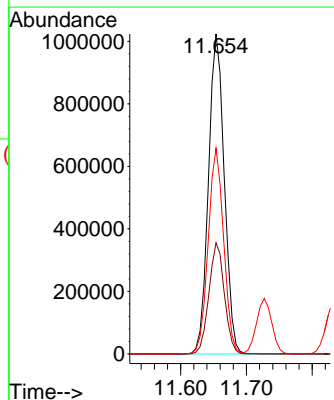
Tgt Ion: 107 Resp: 453769
 Ion Ratio Lower Upper
 107 100
 109 94.0 64.3 119.3
 188 3.5 2.7 4.1

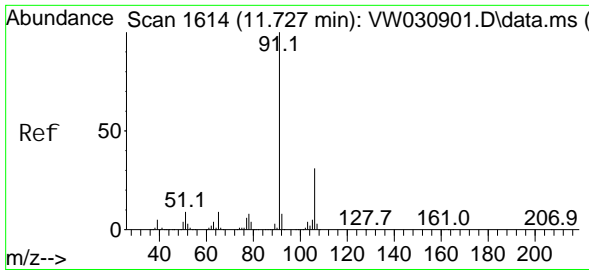


#51
 Chlorobenzene
 Concen: 89.827 ug/L
 RT: 11.654 min Scan# 1602
 Delta R.T. 0.000 min
 Lab File: VW030903.D
 Acq: 04 Nov 2024 11:51



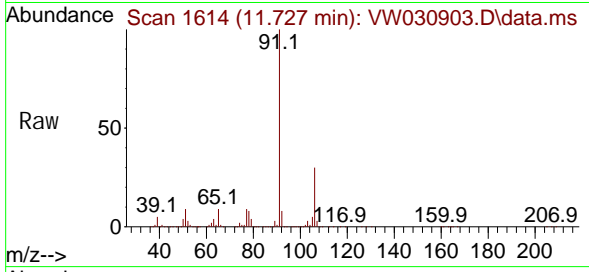
Tgt Ion: 112 Resp: 1713933
 Ion Ratio Lower Upper
 112 100
 114 34.8 21.9 40.7
 77 64.3 45.3 67.9



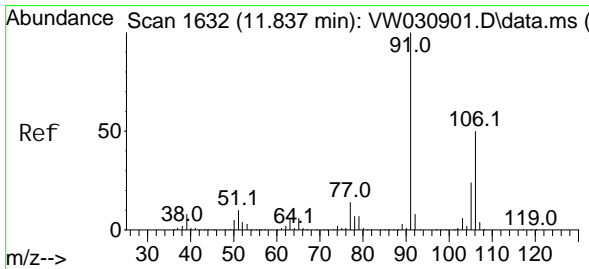
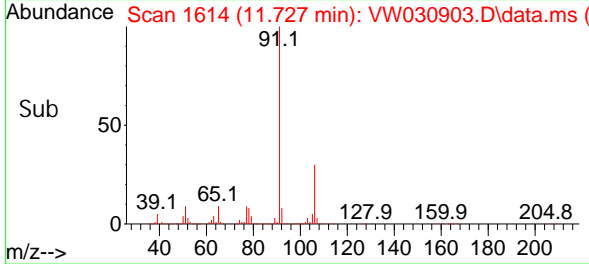
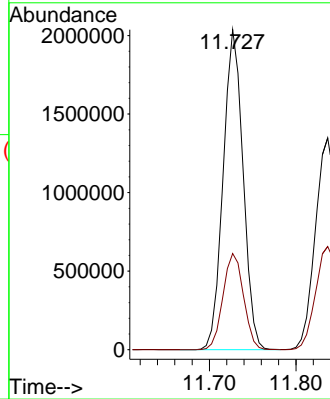


#52
 Ethyl benzene
 Concen: 96.444 ug/L
 RT: 11.727 min Scan# 1614
 Delta R.T. 0.000 min
 Lab File: VW030903.D
 Acq: 04 Nov 2024 11:51

Instrument :
 MSVOA_W
 ClientSampleId :

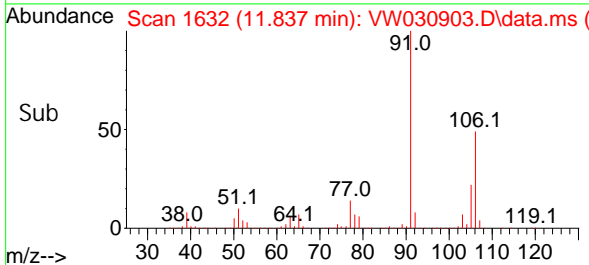
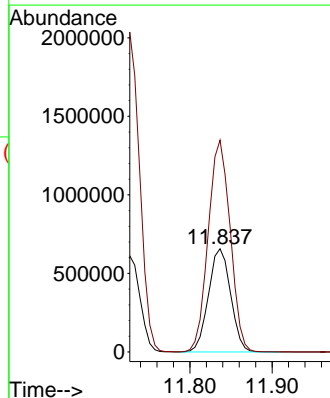
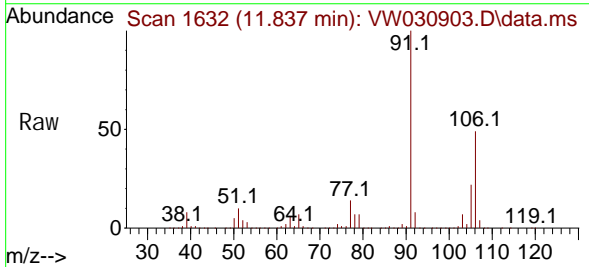


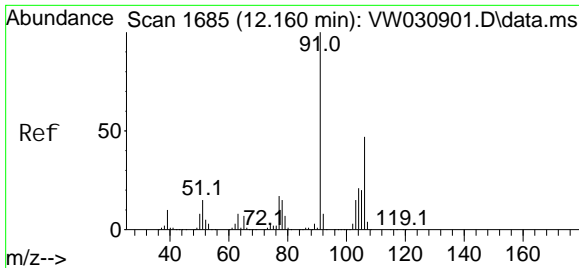
Tgt Ion: 91 Resp: 3248849
 Ion Ratio Lower Upper
 91 100
 106 30.1 21.6 40.0



#53
 m, p-Xyl ene
 Concen: 96.972 ug/L
 RT: 11.837 min Scan# 1632
 Delta R.T. 0.000 min
 Lab File: VW030903.D
 Acq: 04 Nov 2024 11:51

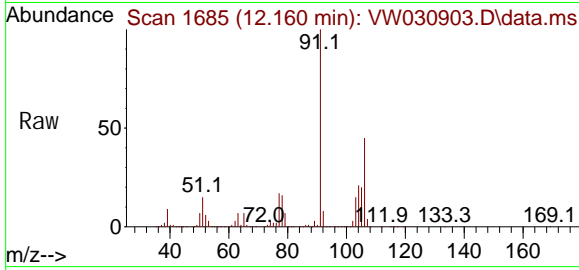
Tgt Ion: 106 Resp: 1228589
 Ion Ratio Lower Upper
 106 100
 91 205.3 140.7 261.3



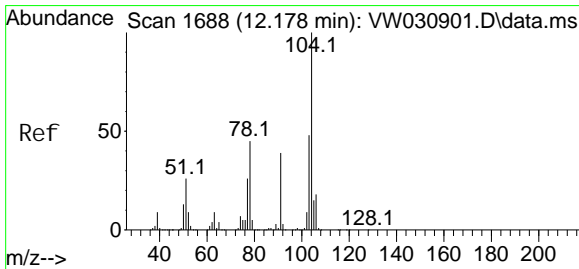
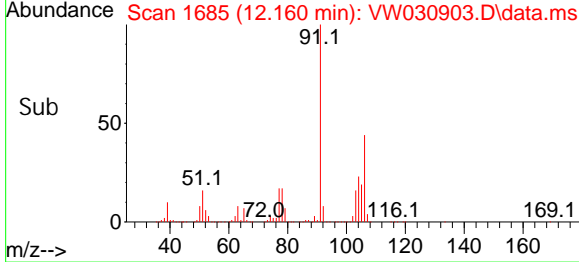
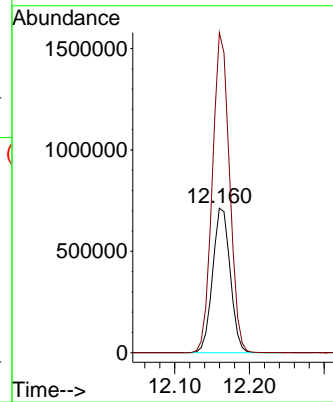


#54
 o-Xyl ene
 Concen: 99.871 ug/L
 RT: 12.160 min Scan# 1685
 Delta R.T. 0.000 min
 Lab File: VW030903.D
 Acq: 04 Nov 2024 11:51

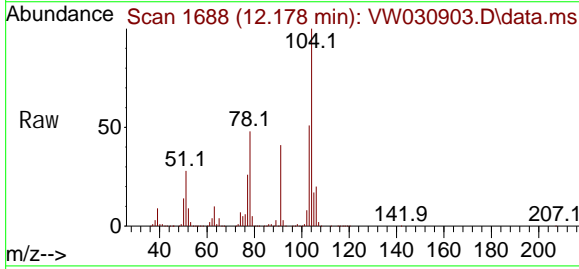
Instrument : MSVOA_W
 ClientSampleId :



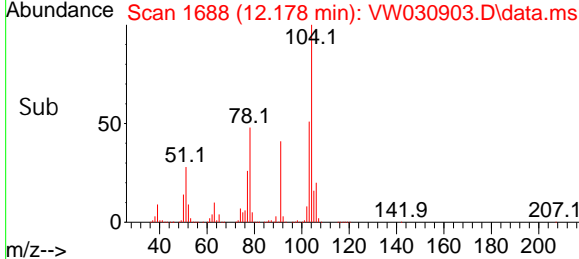
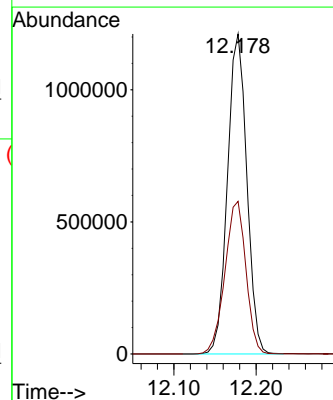
Tgt Ion: 106 Resp: 1164281
 Ion Ratio Lower Upper
 106 100
 91 221.3 149.9 278.3

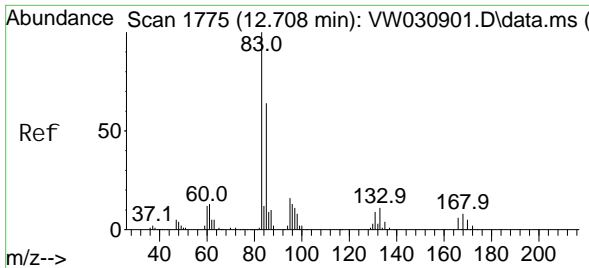


#55
 Styrene
 Concen: 99.437 ug/L
 RT: 12.178 min Scan# 1688
 Delta R.T. 0.000 min
 Lab File: VW030903.D
 Acq: 04 Nov 2024 11:51



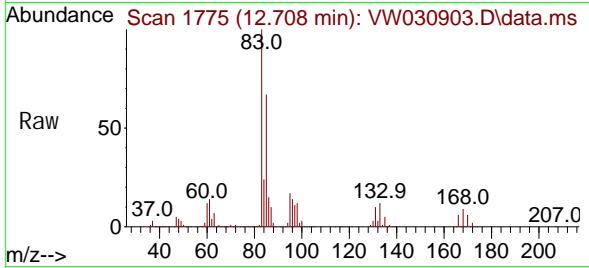
Tgt Ion: 104 Resp: 1980619
 Ion Ratio Lower Upper
 104 100
 78 47.7 31.8 59.0



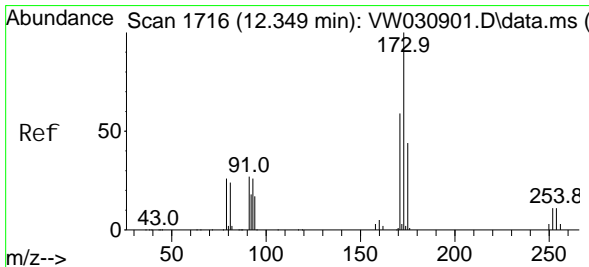
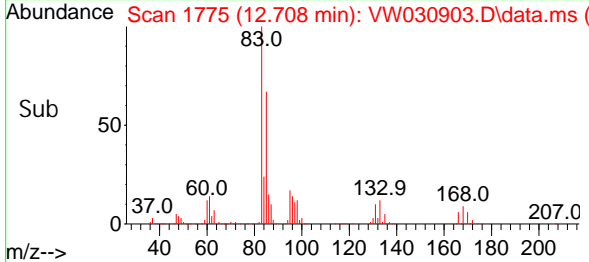
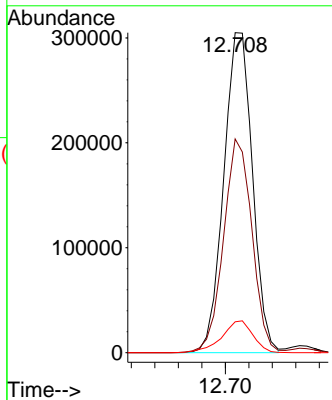


#57
 1,1,2,2-Tetrachloroethane
 Concen: 93.987 ug/L
 RT: 12.708 min Scan# 1775
 Delta R.T. 0.000 min
 Lab File: VW030903.D
 Acq: 04 Nov 2024 11:51

Instrument : MSVOA_W
 ClientSampleId :

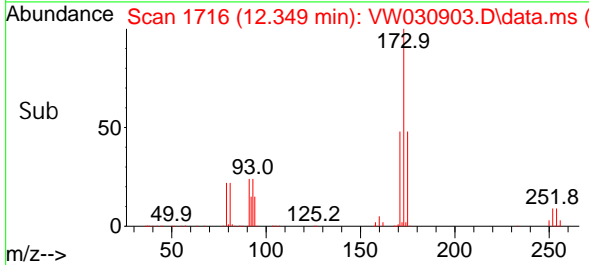
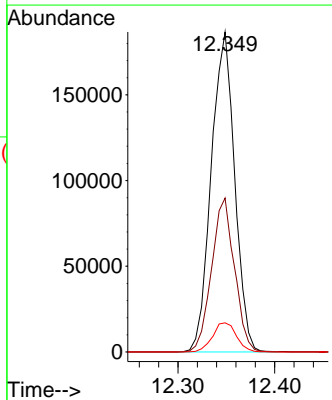
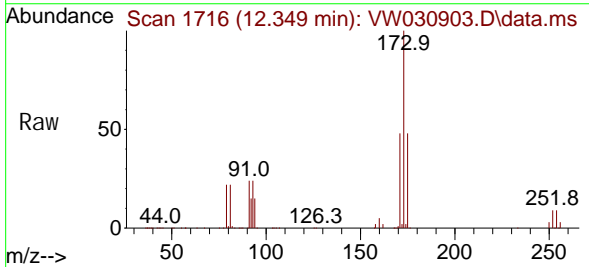


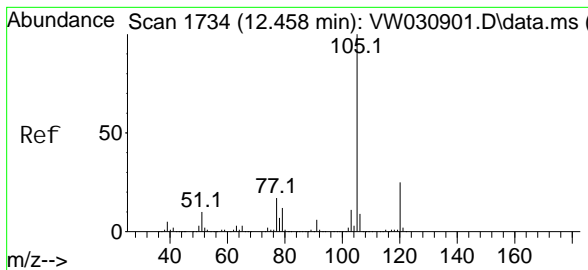
Tgt Ion: 83 Resp: 518023
 Ion Ratio Lower Upper
 83 100
 85 66.8 45.1 83.7
 131 9.7 7.7 11.5



#59
 Bromoform
 Concen: 103.418 ug/L
 RT: 12.349 min Scan# 1716
 Delta R.T. 0.000 min
 Lab File: VW030903.D
 Acq: 04 Nov 2024 11:51

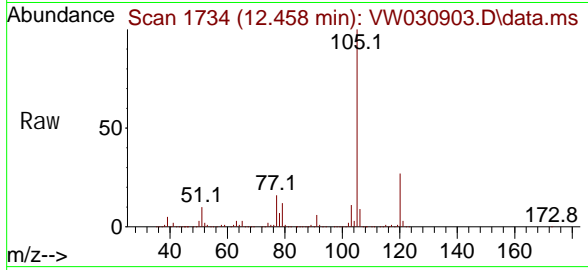
Tgt Ion: 173 Resp: 314013
 Ion Ratio Lower Upper
 173 100
 175 47.0 39.3 58.9
 254 9.3 7.8 11.6



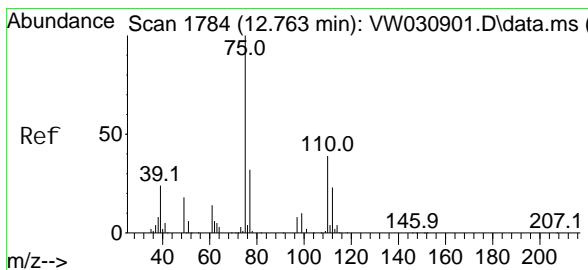
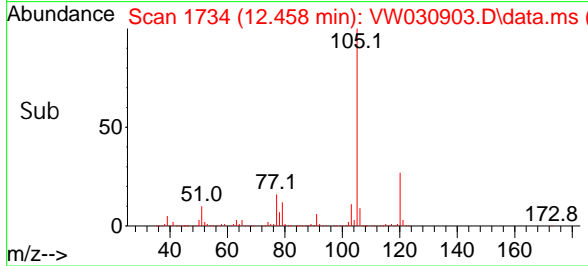
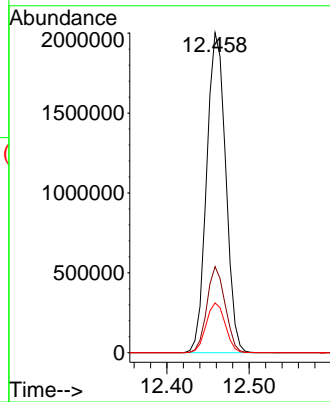


#60
 Isopropyl benzene
 Concen: 99.232 ug/L
 RT: 12.458 min Scan# 1734
 Delta R.T. 0.000 min
 Lab File: VW030903.D
 Acq: 04 Nov 2024 11:51

Instrument :
 MSVOA_W
 ClientSampleId :

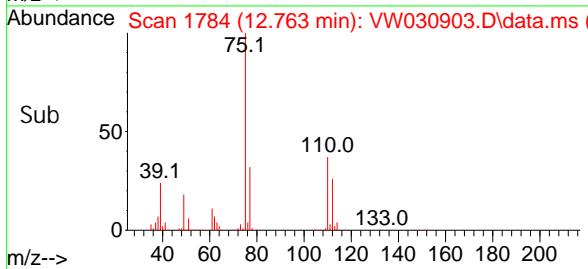
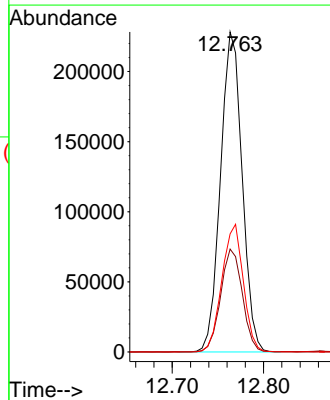
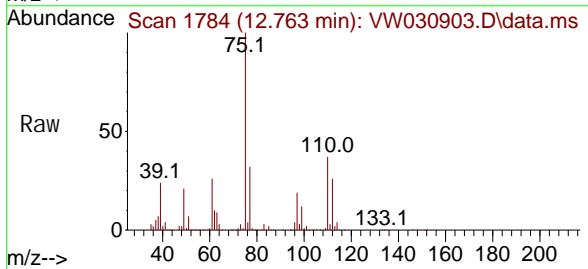


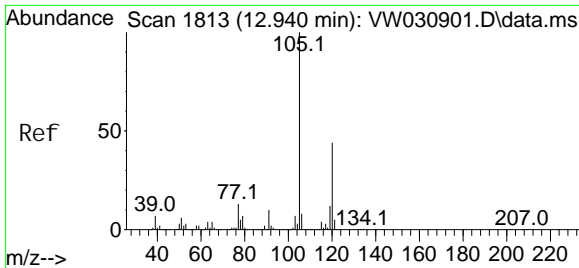
Tgt Ion: 105 Resp: 3218703
 Ion Ratio Lower Upper
 105 100
 120 25.8 20.6 31.0
 77 15.6 13.0 19.4



#61
 1,2,3-Trichloropropane
 Concen: 94.175 ug/L
 RT: 12.763 min Scan# 1784
 Delta R.T. 0.000 min
 Lab File: VW030903.D
 Acq: 04 Nov 2024 11:51

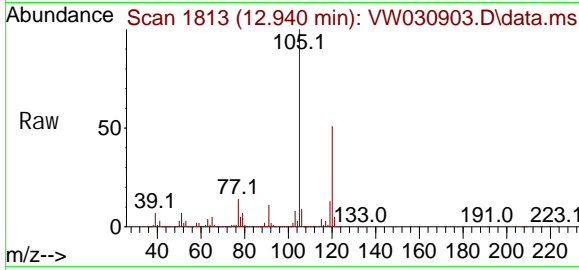
Tgt Ion: 75 Resp: 375442
 Ion Ratio Lower Upper
 75 100
 77 32.2 26.2 39.2
 110 39.7 31.8 47.8



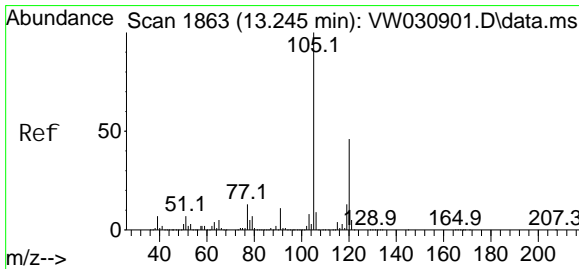
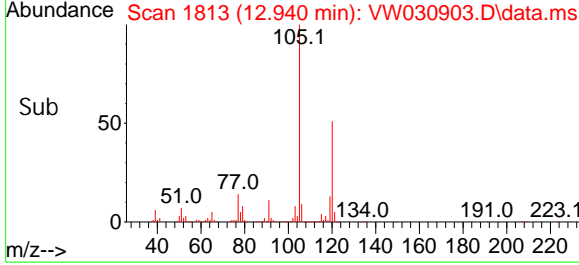
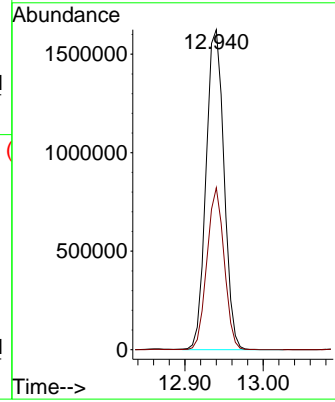


#62
 1, 3, 5-Tri methyl benzene
 Concen: 101.043 ug/L
 RT: 12.940 min Scan# 1813
 Delta R.T. 0.000 min
 Lab File: VW030903.D
 Acq: 04 Nov 2024 11:51

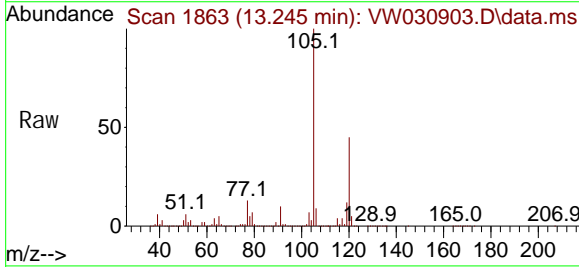
Instrument : MSVOA_W
 ClientSampleId :



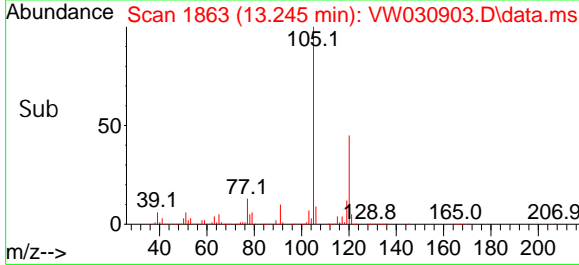
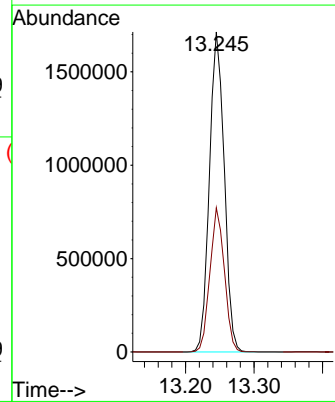
Tgt Ion: 105 Resp: 2580502
 Ion Ratio Lower Upper
 105 100
 120 48.5 38.7 58.1

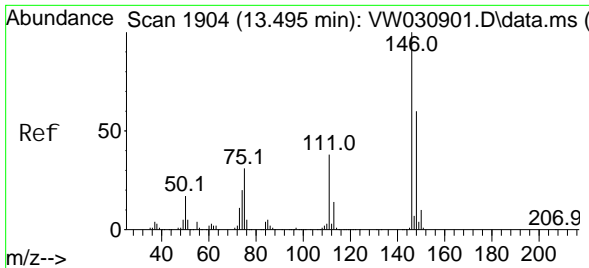


#63
 1, 2, 4-Tri methyl benzene
 Concen: 103.682 ug/L
 RT: 13.245 min Scan# 1863
 Delta R.T. 0.000 min
 Lab File: VW030903.D
 Acq: 04 Nov 2024 11:51



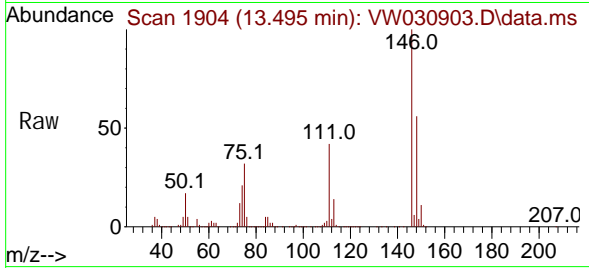
Tgt Ion: 105 Resp: 2578652
 Ion Ratio Lower Upper
 105 100
 120 44.1 35.9 53.9



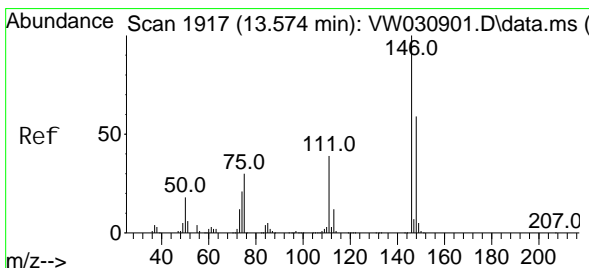
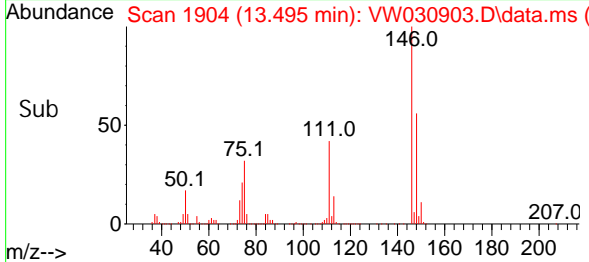
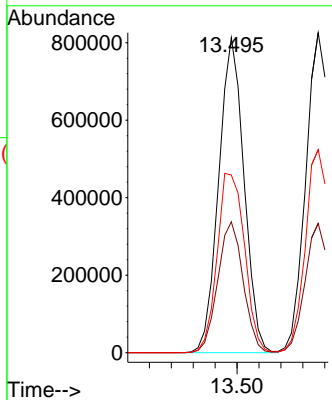


#64
 1, 3-Di chl orobenzene
 Concen: 91.554 ug/L
 RT: 13.495 min Scan# 1904
 Delta R.T. 0.000 min
 Lab File: VW030903.D
 Acq: 04 Nov 2024 11:51

Instrument :
 MSVOA_W
 ClientSampleId :

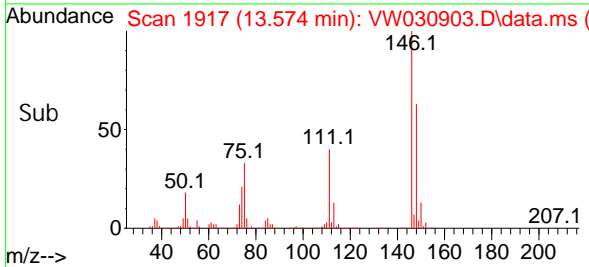
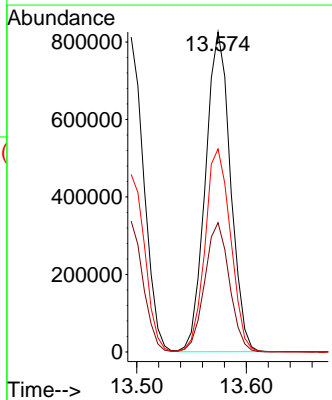
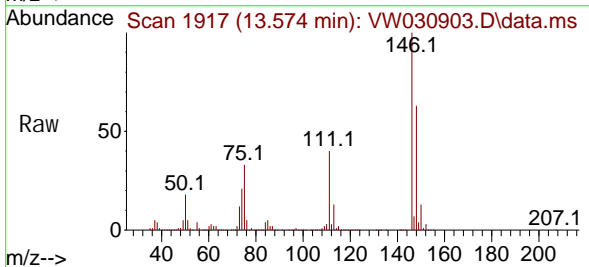


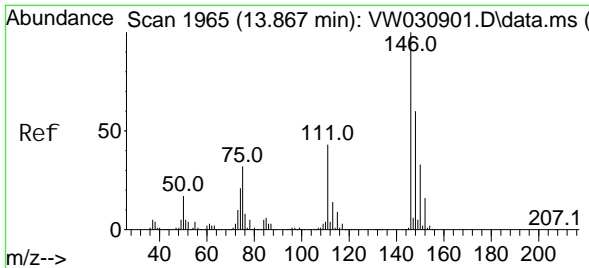
Tgt Ion: 146 Resp: 1303951
 Ion Ratio Lower Upper
 146 100
 111 41.6 26.8 49.8
 148 56.4 41.8 77.6



#65
 1, 4-Di chl orobenzene
 Concen: 89.672 ug/L
 RT: 13.574 min Scan# 1917
 Delta R.T. 0.000 min
 Lab File: VW030903.D
 Acq: 04 Nov 2024 11:51

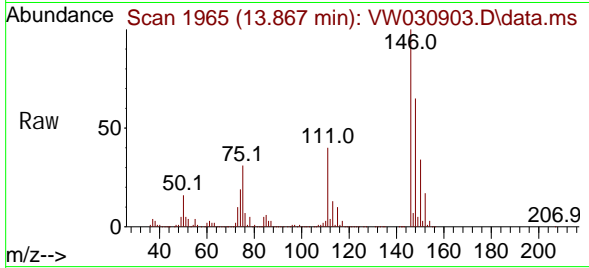
Tgt Ion: 146 Resp: 1311153
 Ion Ratio Lower Upper
 146 100
 111 40.4 27.6 51.4
 148 63.5 41.6 77.2





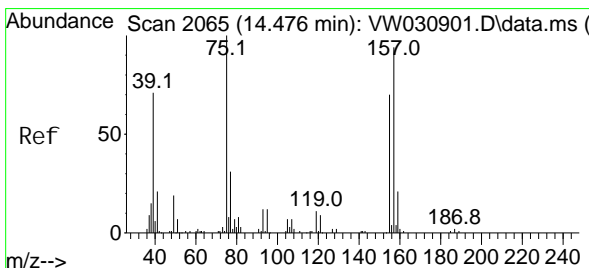
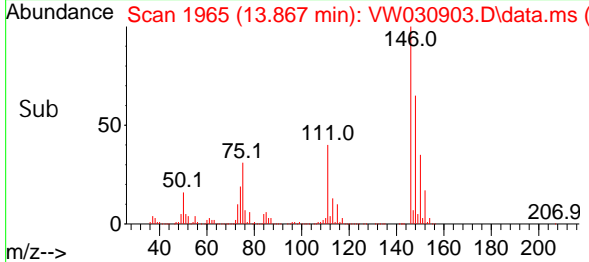
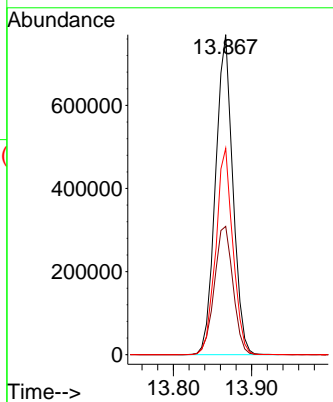
#67
 1, 2-Di chl orobenzene
 Concen: 93.183 ug/L
 RT: 13.867 min Scan# 1965
 Delta R.T. 0.000 min
 Lab File: VW030903.D
 Acq: 04 Nov 2024 11:51

Instrument : MSVOA_W
 ClientSampleId :

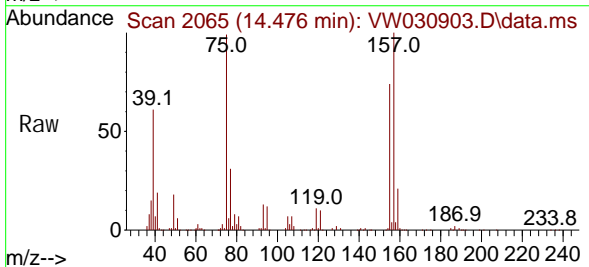


Tgt Ion: 146 Resp: 1182820

Ion	Ratio	Lower	Upper
146	100		
111	40.1	34.3	51.5
148	64.5	48.0	72.0

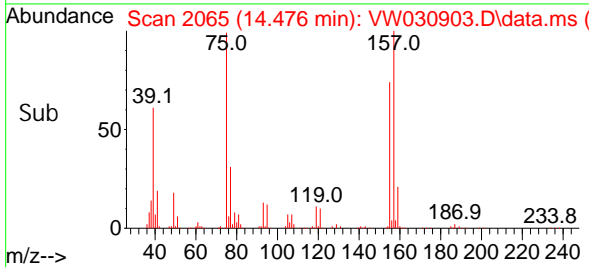
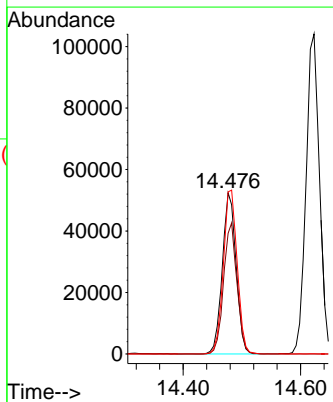


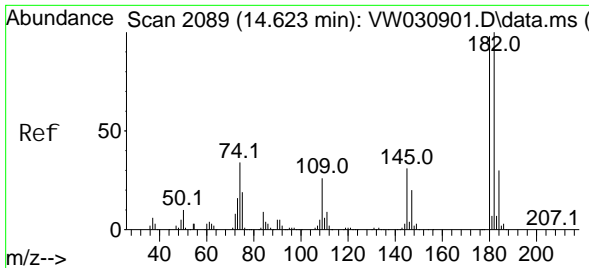
#68
 1, 2-Di bromo-3- chl oropropane
 Concen: 101.672 ug/L
 RT: 14.476 min Scan# 2065
 Delta R.T. 0.000 min
 Lab File: VW030903.D
 Acq: 04 Nov 2024 11:51



Tgt Ion: 75 Resp: 85814

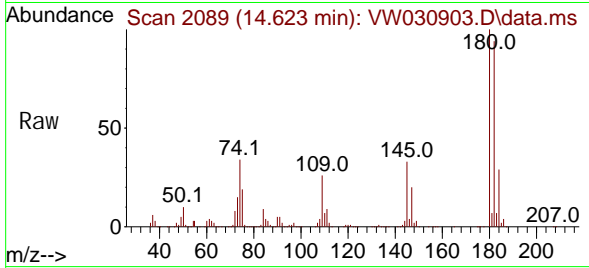
Ion	Ratio	Lower	Upper
75	100		
155	74.9	56.2	84.2
157	100.5	74.9	112.3





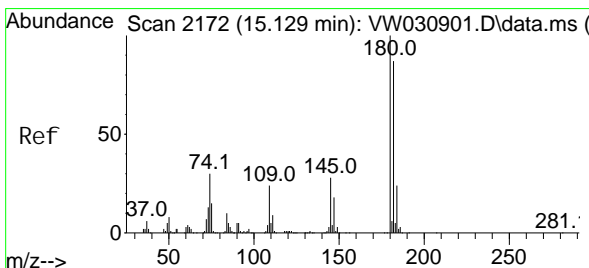
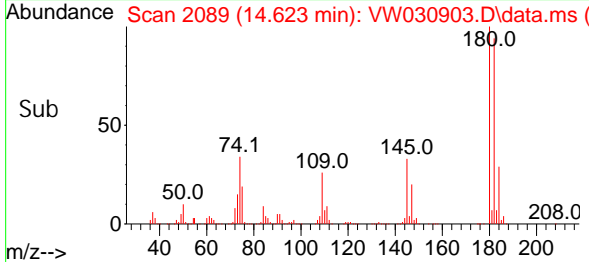
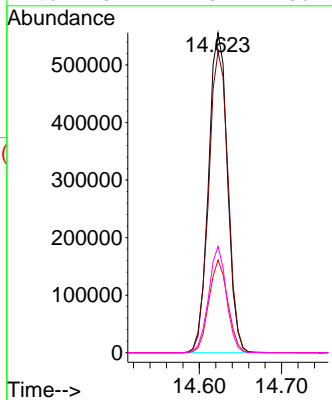
#69
 1, 3, 5-Tri chlorobenzene
 Concen: 94.149 ug/L
 RT: 14.623 min Scan# 2089
 Delta R.T. 0.000 min
 Lab File: VW030903.D
 Acq: 04 Nov 2024 11:51

Instrument : MSVOA_W
 ClientSampleId :

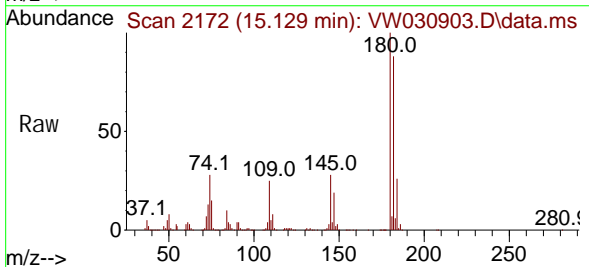


Tgt Ion: 180 Resp: 889814

Ion	Ratio	Lower	Upper
180	100		
182	96.2	76.6	114.8
184	28.8	23.9	35.9
145	31.2	23.9	35.9

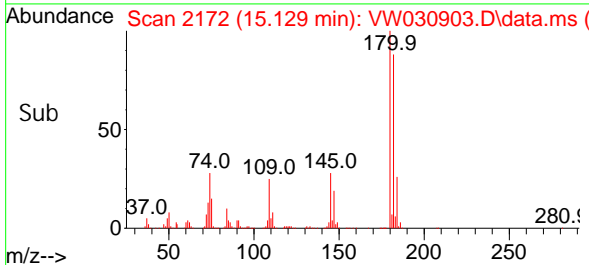
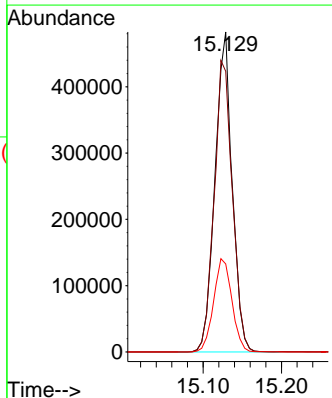


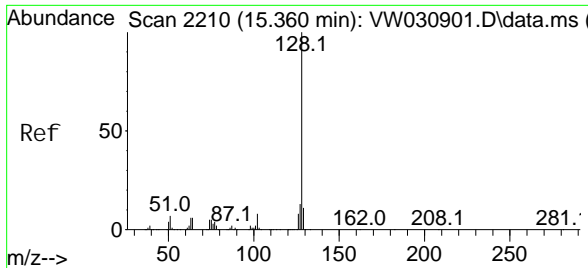
#70
 1, 2, 4-tri chlorobenzene
 Concen: 98.277 ug/L
 RT: 15.129 min Scan# 2172
 Delta R.T. 0.000 min
 Lab File: VW030903.D
 Acq: 04 Nov 2024 11:51



Tgt Ion: 180 Resp: 737522

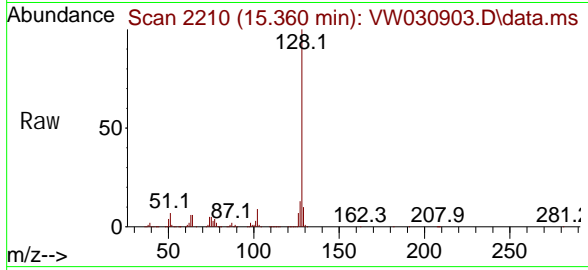
Ion	Ratio	Lower	Upper
180	100		
182	96.6	74.5	111.7
145	31.1	24.2	36.2



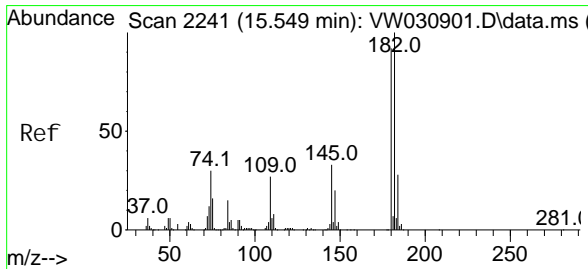
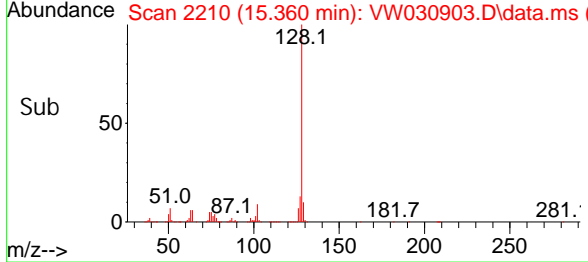
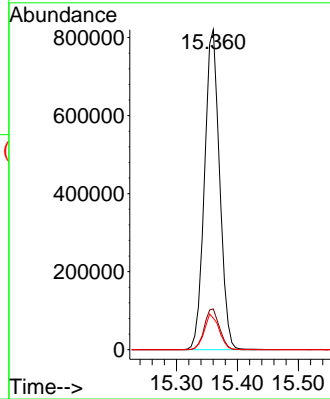


#71
 Naphthalene
 Concen: 116.022 ug/L
 RT: 15.360 min Scan# 2210
 Delta R.T. 0.000 min
 Lab File: VW030903.D
 Acq: 04 Nov 2024 11:51

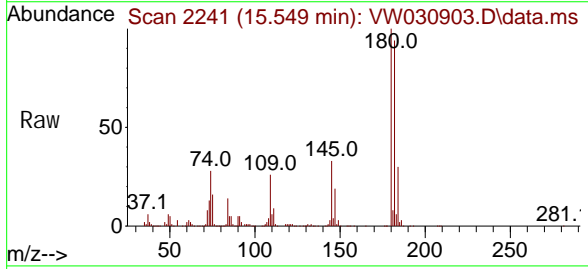
Instrument :
 MSVOA_W
 ClientSampleId :



Tgt Ion: 128 Resp: 1411494
 Ion Ratio Lower Upper
 128 100
 127 12.9 10.2 15.4
 129 10.9 8.7 13.1



#72
 1,2,3-Trichlorobenzene
 Concen: 100.795 ug/L
 RT: 15.549 min Scan# 2241
 Delta R.T. 0.000 min
 Lab File: VW030903.D
 Acq: 04 Nov 2024 11:51



Tgt Ion: 180 Resp: 651897
 Ion Ratio Lower Upper
 180 100
 182 95.4 79.2 118.8
 145 33.5 27.0 40.6

