

Data Path : Z:\VOASRV\HPCHEM1\MSVOA W\DATA\VW110619\  
 Data File : VW013918.D  
 Acq On : 06 Nov 2019 11:38  
 Operator : SY/VA  
 Sample : K5698-03  
 Misc : 7.01G/10ML/MSVOA W/SOIL  
 ALS Vial : 1 Sample Multiplier: 1

Instrument :  
 MSVOA\_W  
 ClientSampleId :

Quant Time: Nov 07 00:56:22 2019  
 Quant Method : Z:\VOASRV\HPCHEM1\MSVOA\_W\METHOD\SOM2WLM110119S.M  
 Quant Title : VOC Analysis  
 QLast Update : Thu Nov 07 00:53:52 2019  
 Response via : Initial Calibration

Internal Standards	R.T.	QIon	Response	Conc	Units	Dev(Min)
1) 1,4-Difluorobenzene	8.85	114	934	25.00	ug/L	0.01
28) Chlorobenzene-d5	11.63	117	270	25.00	ug/L	0.00
60) 1,4-Dichlorobenzene-d4	13.57	152	116	25.00	ug/L	0.00

## System Monitoring Compounds

4) Vinyl Chloride-d3	2.36	65	361	24.84	ug/L	0.00
Spiked Amount	25.000	Range	30 - 150	Recovery	=	99.36%
7) Chloroethane-d5	2.89	69	226	19.46	ug/L	0.00
Spiked Amount	25.000	Range	30 - 150	Recovery	=	77.84%
10) 1,1-Dichloroethene-d2	4.04	63	422	14.26	ug/L	0.02
Spiked Amount	25.000	Range	45 - 110	Recovery	=	57.04%
20) 2-Butanone-d5	7.09	46	53	10.13	ug/L	0.02
Spiked Amount	50.000	Range	20 - 135	Recovery	=	20.26%
24) Chloroform-d	7.65	84	1117	37.96	ug/L	0.00
Spiked Amount	25.000	Range	40 - 150	Recovery	=	151.84%#
26) 1,2-Dichloroethane-d4	8.29	65	195	12.31	ug/L	-0.01
Spiked Amount	25.000	Range	70 - 130	Recovery	=	49.24%#
29) Benzene-d6	8.27	84	1657	91.61	ug/L	0.00
Spiked Amount	25.000	Range	20 - 135	Recovery	=	366.44%#
33) 1,2-Dichloropropane-d6	9.27	67	501	91.50	ug/L	0.00
Spiked Amount	25.000	Range	70 - 120	Recovery	=	366.00%#
37) Toluene-d8	10.32	98	486	28.32	ug/L	0.00
Spiked Amount	25.000	Range	30 - 130	Recovery	=	113.28%
38) trans-1,3-Dichloropropene-	0.00	79	0	0.00	ug/L	
Spiked Amount	25.000	Range	30 - 135	Recovery	=	0.00%#
39) 2-Hexanone-d5	0.00	63	0	0.00	ug/L	
Spiked Amount	50.000	Range	20 - 135	Recovery	=	0.00%#
48) 1,1,2,2-Tetrachloroethane-	12.69	84	309	63.80	ug/L	0.00
Spiked Amount	25.000	Range	45 - 120	Recovery	=	255.20%#
61) 1,2-Dichlorobenzene-d4	13.57	152	116	25.27	ug/L	-0.29
Spiked Amount	25.000	Range	75 - 120	Recovery	=	101.08%

## Target Compounds

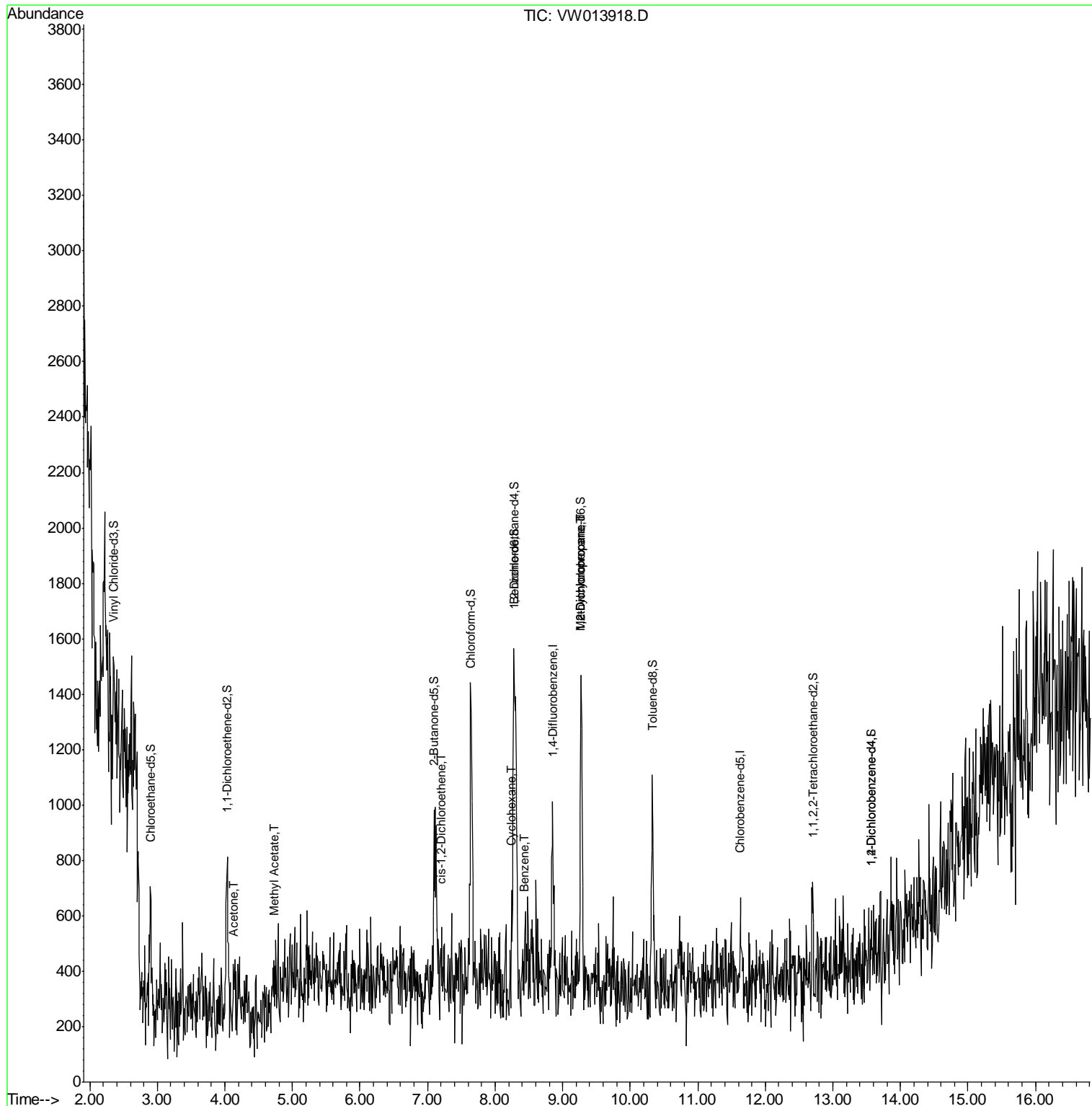
Target Compounds	R.T.	QIon	Response	Conc	Units	Ovalue
13) Acetone	4.14	43	112	21.990	ug/L #	43
15) Methyl Acetate	4.73	43	25	2.835	ug/L #	51
22) cis-1,2-Dichloroethene	7.20	96	42	2.377	ug/L #	2
30) Cyclohexane	8.25	56	44	5.400	ug/L #	15
34) Benzene	8.43	78	131	6.683	ug/L	100
36) Methylcyclohexane	9.27	83	85	9.372	ug/L #	18
40) 1,2-Dichloropropane	9.27	63	57	11.847	ug/L #	85

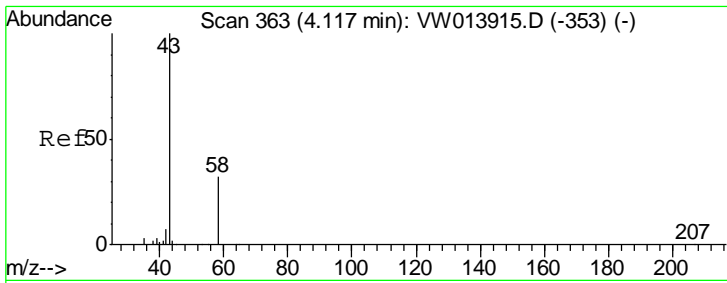
(#) = qualifier out of range (m) = manual integration (+) = signals summed

Data Path : Z:\VOASRV\HPCHEM1\MSVOA W\DATA\VW110619\  
 Data File : VW013918.D  
 Acq On : 06 Nov 2019 11:38  
 Operator : SY/VA  
 Sample : K5698-03  
 Misc : 7.01G/10ML/MSVOA W/SOIL  
 ALS Vial : 1 Sample Multiplier: 1

Instrument :  
 MSVOA\_W  
 Client Sampled :

Quant Time: Nov 07 00:56:22 2019  
 Quant Method : Z:\VOASRV\HPCHEM1\MSVOA\_W\METHOD\SOM2WLM110119S.M  
 Quant Title : VOC Analysis  
 QLast Update : Thu Nov 07 00:53:52 2019  
 Response via : Initial Calibration

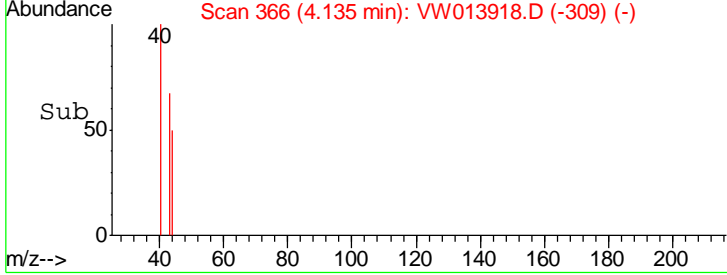
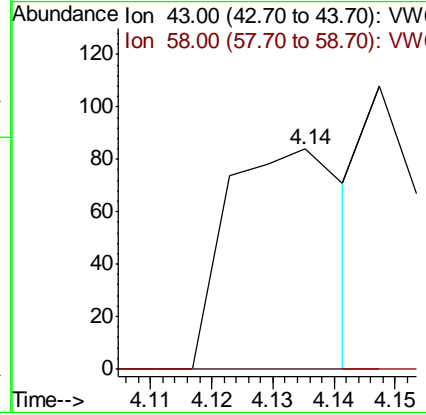
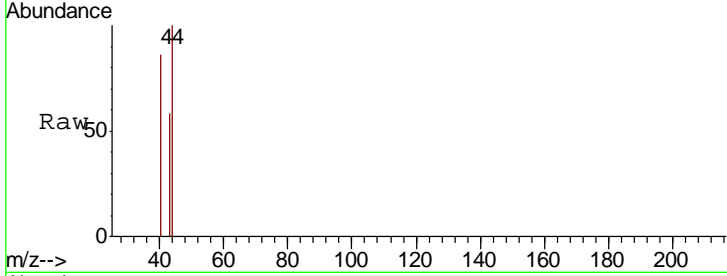




#13  
 Acetone  
 Concen: 21.990 ug/L  
 RT: 4.14 min Scan# 366  
 Delta R.T. 0.02 min  
 Lab File: VW013918.D  
 Acq: 06 Nov 2019 11:38

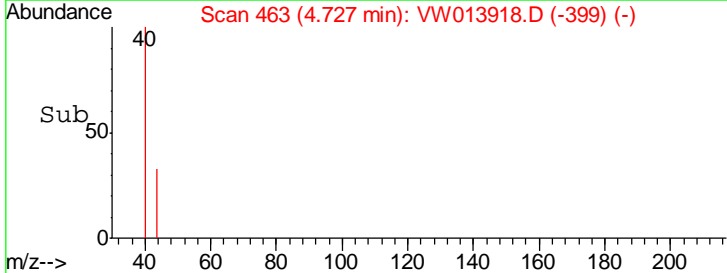
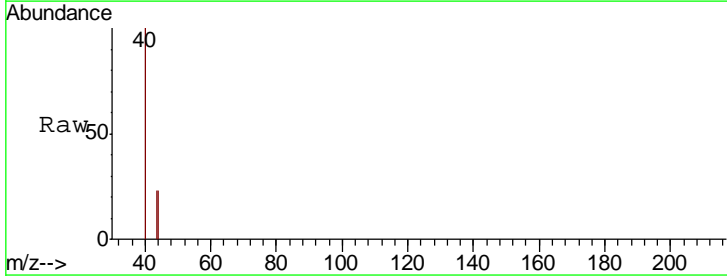
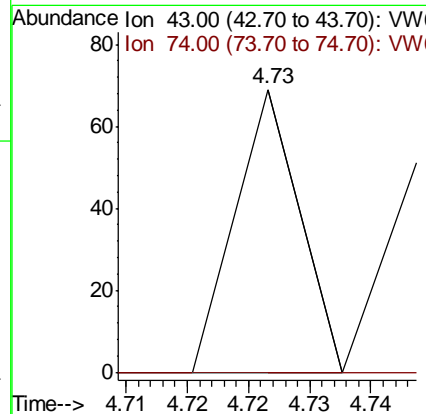
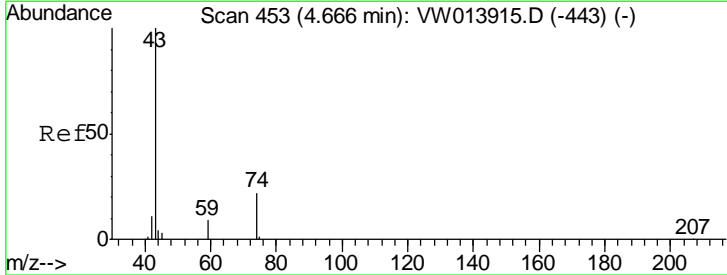
Instrument :  
 MSVOA\_W  
 ClientSampled :

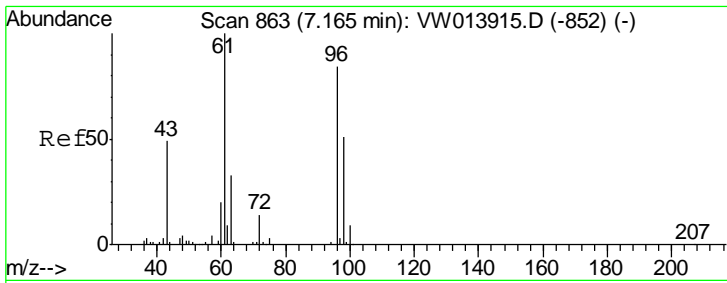
Tgt Ion	Resp	Lower	Upper
43	100	0.0	62.8
58	0.0	0.0	62.8



#15  
 Methyl Acetate  
 Concen: 2.835 ug/L  
 RT: 4.73 min Scan# 463  
 Delta R.T. 0.06 min  
 Lab File: VW013918.D  
 Acq: 06 Nov 2019 11:38

Tgt Ion	Resp	Lower	Upper
43	100	19.1	28.7#
74	0.0	19.1	28.7#

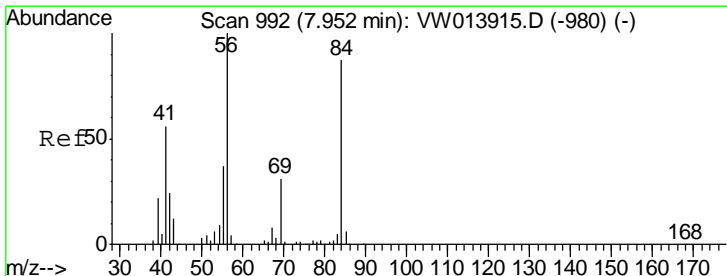
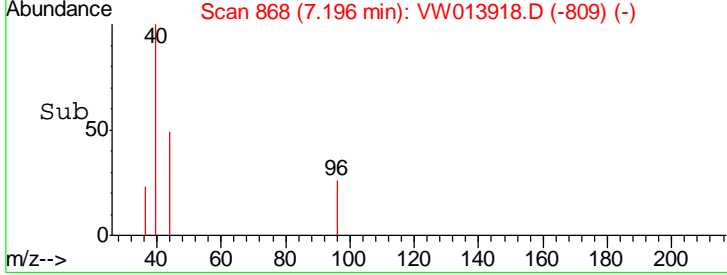
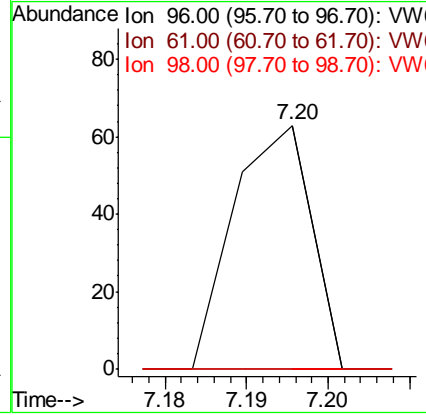
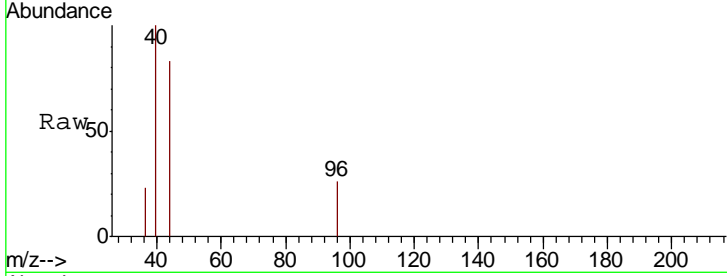




#22  
 cis-1,2-Dichloroethene  
 Concen: 2.377 ug/L  
 RT: 7.20 min Scan# 868  
 Delta R.T. 0.03 min  
 Lab File: VW013918.D  
 Acq: 06 Nov 2019 11:38

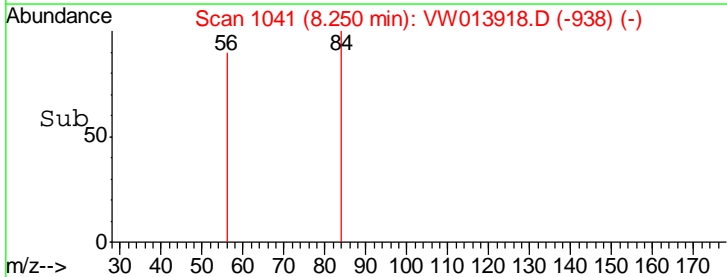
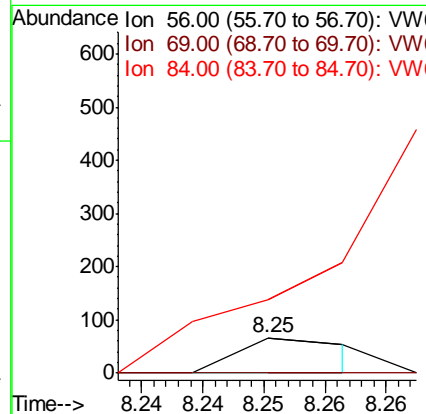
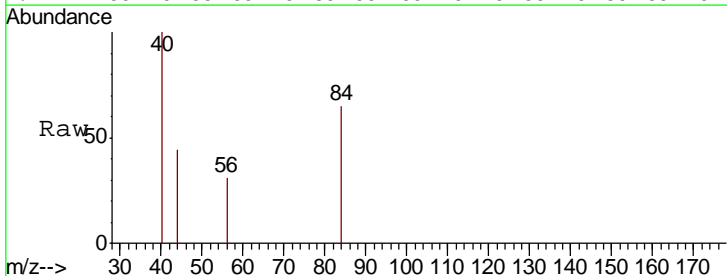
Instrument :  
 MSVOA\_W  
 ClientSampled :

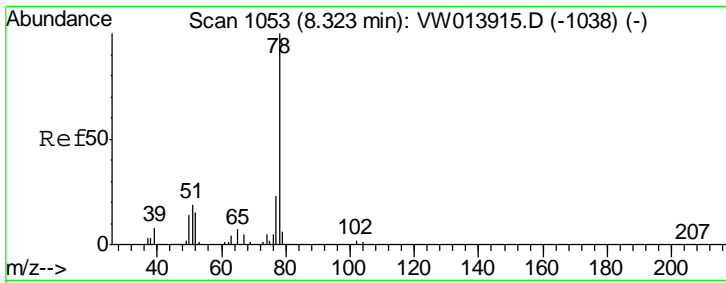
Tgt Ion	Resp	Lower	Upper
96	100		
61	0.0	82.3	152.9#
98	0.0	44.0	81.8#



#30  
 Cyclohexane  
 Concen: 5.400 ug/L  
 RT: 8.25 min Scan# 1041  
 Delta R.T. 0.30 min  
 Lab File: VW013918.D  
 Acq: 06 Nov 2019 11:38

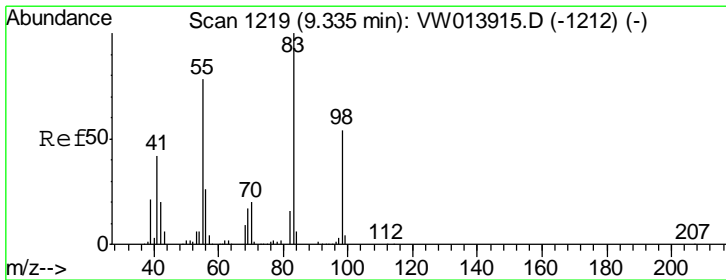
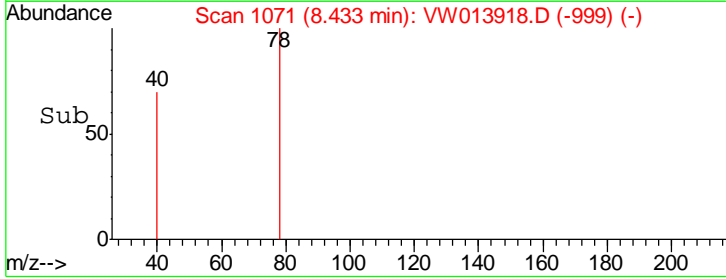
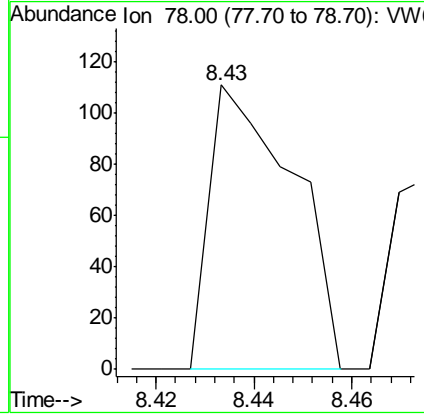
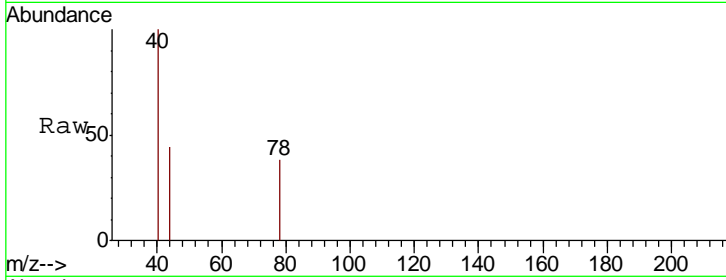
Tgt Ion	Resp	Lower	Upper
56	100		
69	0.0	24.5	36.7#
84	0.0	70.6	105.8#





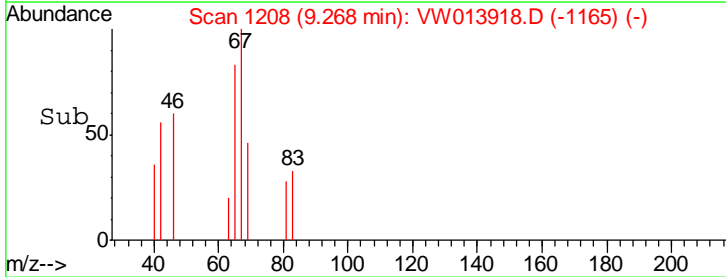
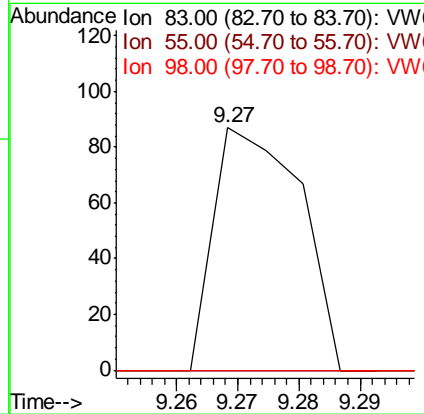
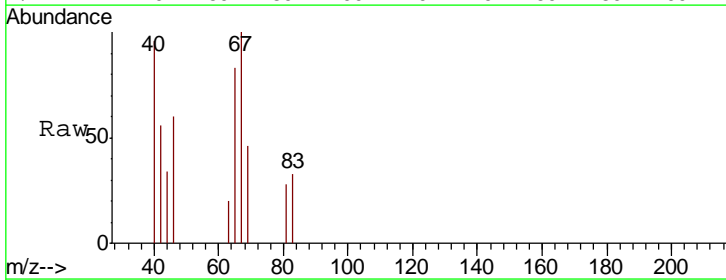
#34  
Benzene  
Concen: 6.683 ug/L  
RT: 8.43 min Scan# 1071  
Delta R.T. 0.11 min  
Lab File: VW013918.D  
Acq: 06 Nov 2019 11:38  
Tgt Ion: 78 Resp: 131

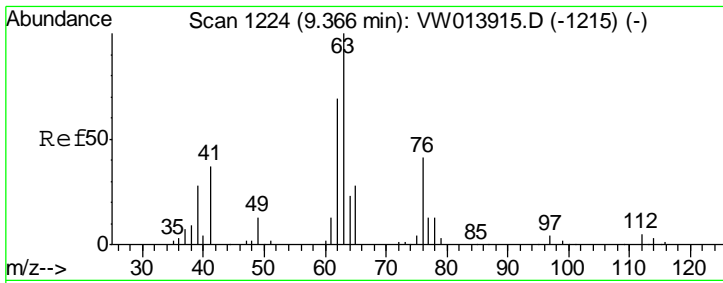
Instrument : MSVOA\_W  
ClientSampled :



#36  
Methylcyclohexane  
Concen: 9.372 ug/L  
RT: 9.27 min Scan# 1208  
Delta R.T. -0.07 min  
Lab File: VW013918.D  
Acq: 06 Nov 2019 11:38  
Tgt Ion: 83 Resp: 85

Ion	Ratio	Lower	Upper
83	100		
55	0.0	60.2	90.2#
98	0.0	39.2	58.8#





#40  
 1,2-Dichloropropane  
 Concen: 11.847 ug/L  
 RT: 9.27 min Scan# 1209  
 Delta R.T. -0.09 min  
 Lab File: VW013918.D  
 Acq: 06 Nov 2019 11:38

Instrument :  
 MSVOA\_W  
 ClientSampled :

Tot Ion: 63 Resp: 57  
 Ion Ratio Lower Upper  
 63 100  
 112 0.0 3.9 5.9#

