

Data Path : Z:\voasrv\HPCHEM1\MSVOA_W\Data\VW110822\
 Data File : VW025020.D
 Acq On : 08 Nov 2022 10:38
 Operator : SY/VA
 Sample : VSTDCCC025
 Misc : 5.00g/10mL/MSVOA_W/SOIL
 ALS Vial : 1 Sample Multiplier: 1

Instrument :
 MSVOA_W
 ClientSampleId :

Quant Time: Nov 09 00:52:01 2022
 Quant Method : Z:\voasrv\HPCHEM1\MSVOA_W\Method\SFAMWLM102622SMA.M
 Quant Title : SFAM01.0
 QLast Update : Fri Nov 04 04:15:36 2022
 Response via : Initial Calibration

Compound	R.T.	QIon	Response	Conc	Units	Dev(Min)
Internal Standards						
1) 1,4-Difluorobenzene	8.842	114	230429	25.000	ug/L	0.00
28) Chlorobenzene-d5	11.628	117	210675	25.000	ug/L	0.00
58) 1,4-Dichlorobenzene-d4	13.554	152	116404	25.000	ug/L	0.00
System Monitoring Compounds						
4) Vinyl Chloride-d3	2.349	65	49767	19.242	ug/L	0.00
Spiked Amount	25.000	Range 30 - 150	Recovery =	76.960%		
7) Chloroethane-d5	2.879	69	31840	21.015	ug/L	0.00
Spiked Amount	25.000	Range 30 - 150	Recovery =	84.040%		
11) 1,1-Dichloroethene-d2	4.019	63	143052	22.204	ug/L	0.00
Spiked Amount	25.000	Range 45 - 110	Recovery =	88.800%		
21) 2-Butanone-d5	7.080	46	39083	44.773	ug/L	0.00
Spiked Amount	50.000	Range 20 - 135	Recovery =	89.540%		
24) Chloroform-d	7.647	84	180832	25.859	ug/L	0.00
Spiked Amount	25.000	Range 40 - 150	Recovery =	103.440%		
26) 1,2-Dichloroethane-d4	8.305	65	100185	25.593	ug/L	0.00
Spiked Amount	25.000	Range 70 - 130	Recovery =	102.360%		
32) Benzene-d6	8.275	84	330001	24.438	ug/L	0.00
Spiked Amount	25.000	Range 20 - 135	Recovery =	97.760%		
36) 1,2-Dichloropropane-d6	9.274	67	93498	23.631	ug/L	0.00
Spiked Amount	25.000	Range 70 - 120	Recovery =	94.520%		
41) Toluene-d8	10.323	98	305309	24.286	ug/L	0.00
Spiked Amount	25.000	Range 30 - 130	Recovery =	97.160%		
43) trans-1,3-Dichloroprop...	10.579	79	42335	24.130	ug/L	0.00
Spiked Amount	25.000	Range 30 - 135	Recovery =	96.520%		
47) 2-Hexanone-d5	10.927	63	32460	47.493	ug/L	0.00
Spiked Amount	50.000	Range 20 - 135	Recovery =	94.980%		
56) 1,1,2,2-Tetrachloroeth...	12.688	84	76640	24.259	ug/L	0.00
Spiked Amount	25.000	Range 45 - 120	Recovery =	97.040%		
66) 1,2-Dichlorobenzene-d4	13.847	152	108357	24.223	ug/L	0.00
Spiked Amount	25.000	Range 75 - 120	Recovery =	96.880%		
Target Compounds						
2) Dichlorodifluoromethane	2.007	85	21116	27.474	ug/L	95
3) Chloromethane	2.215	50	37807	20.452	ug/L	99
5) Vinyl chloride	2.361	62	57564	22.537	ug/L	100
6) Bromomethane	2.776	94	28959	22.719	ug/L	89
8) Chloroethane	2.922	64	24635	23.121	ug/L	97
9) Trichlorofluoromethane	3.257	101	46595	21.746	ug/L	100
10) 1,1,2-Trichloro-1,2,2-...	4.062	101	80142	26.412	ug/L #	73
12) 1,1-Dichloroethene	4.044	96	73493	25.711	ug/L	85
13) Acetone	4.123	43	26809	43.232	ug/L	96
14) Carbon disulfide	4.385	76	202321	24.231	ug/L	100
15) Methyl Acetate	4.672	43	27468	22.248	ug/L	97
16) Methylene chloride	4.922	84	81602	19.945	ug/L	96
17) trans-1,2-Dichloroethene	5.428	96	77902	25.452	ug/L	98
18) Methyl tert-butyl Ether	5.421	73	124631	24.274	ug/L #	91
19) 1,1-Dichloroethane	6.214	63	144391	25.481	ug/L	98
20) cis-1,2-Dichloroethene	7.165	96	86863	26.038	ug/L	95
22) 2-Butanone	7.171	43	39590	42.612	ug/L	97
23) Bromochloromethane	7.513	128	38646	26.722	ug/L	97
25) Chloroform	7.677	83	161730	27.043	ug/L	96

Data Path : Z:\voasrv\HPCHEM1\MSVOA_W\Data\VW110822\
 Data File : VW025020.D
 Acq On : 08 Nov 2022 10:38
 Operator : SY/VA
 Sample : VSTDCCC025
 Misc : 5.00g/10mL/MSVOA_W/SOIL
 ALS Vial : 1 Sample Multiplier: 1

Instrument :
 MSVOA_W
 ClientSampleId :

Quant Time: Nov 09 00:52:01 2022
 Quant Method : Z:\voasrv\HPCHEM1\MSVOA_W\Method\SFAMWLM102622SMA.M
 Quant Title : SFAM01.0
 QLast Update : Fri Nov 04 04:15:36 2022
 Response via : Initial Calibration

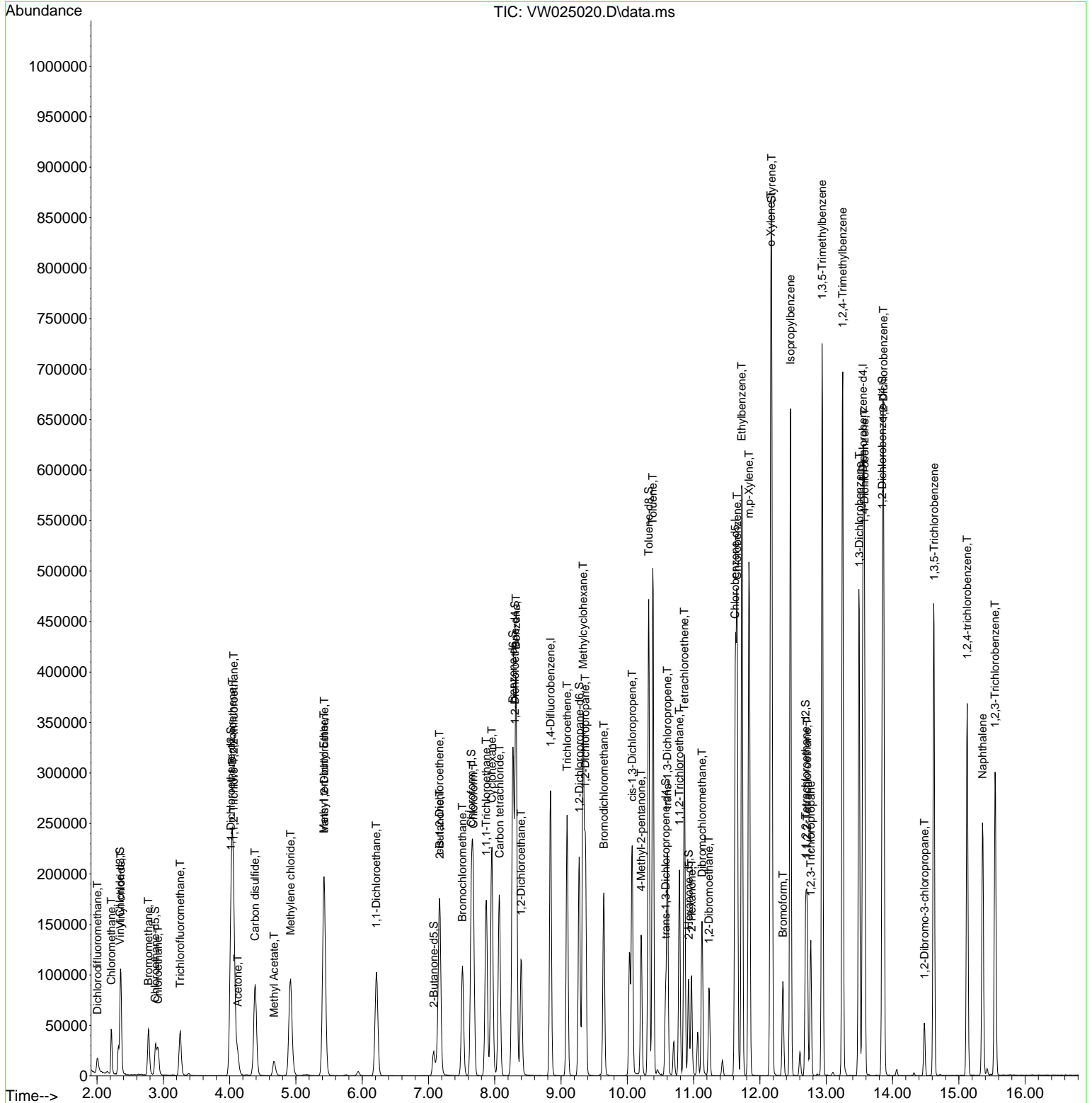
Compound	R.T.	QIon	Response	Conc	Units	Dev(Min)
27) 1,2-Dichloroethane	8.396	62	111938	27.594	ug/L	98
29) Cyclohexane	7.958	56	121873	24.499	ug/L	96
30) 1,1,1-Trichloroethane	7.872	97	143106	27.758	ug/L	99
31) Carbon tetrachloride	8.073	117	135366	29.383	ug/L	97
33) Benzene	8.323	78	329950	26.007	ug/L	100
34) Trichloroethene	9.091	95	89525	26.657	ug/L	96
35) Methylcyclohexane	9.335	83	148781	26.072	ug/L	98
37) 1,2-Dichloropropane	9.366	63	78504	25.495	ug/L	98
38) Bromodichloromethane	9.646	83	120237	27.978	ug/L	99
39) cis-1,3-Dichloropropene	10.073	75	131737	27.063	ug/L	99
40) 4-Methyl-2-pentanone	10.207	43	86320	47.771	ug/L	99
42) Toluene	10.384	91	360215	26.744	ug/L	95
44) trans-1,3-Dichloropropene	10.603	75	117852	27.233	ug/L	99
45) 1,1,2-Trichloroethane	10.786	97	60918	26.202	ug/L	97
46) Tetrachloroethene	10.859	164	66552	27.709	ug/L	93
48) 2-Hexanone	10.969	43	58721	46.990	ug/L	98
49) Dibromochloromethane	11.128	129	79867	28.182	ug/L	100
50) 1,2-Dibromoethane	11.231	107	56142	25.533	ug/L	97
51) Chlorobenzene	11.658	112	232916	26.679	ug/L	96
52) Ethylbenzene	11.725	91	416148	26.767	ug/L	97
53) m,p-Xylene	11.835	106	159887	26.567	ug/L	92
54) o-Xylene	12.164	106	152988	26.946	ug/L	99
55) Styrene	12.176	104	271518	27.534	ug/L	93
57) 1,1,2,2-Tetrachloroethane	12.713	83	70329	25.216	ug/L	99
59) Bromoform	12.347	173	40435	24.560	ug/L #	96
60) Isopropylbenzene	12.463	105	405513	23.171	ug/L	99
61) 1,2,3-Trichloropropane	12.768	75	53228	22.760	ug/L	99
62) 1,3,5-Trimethylbenzene	12.938	105	384580	25.315	ug/L	100
63) 1,2,4-Trimethylbenzene	13.249	105	381113	25.583	ug/L	97
64) 1,3-Dichlorobenzene	13.499	146	187040	25.625	ug/L	95
65) 1,4-Dichlorobenzene	13.578	146	189523	26.022	ug/L	96
67) 1,2-Dichlorobenzene	13.865	146	169515	25.830	ug/L	97
68) 1,2-Dibromo-3-chloropr...	14.481	75	14269	26.403	ug/L	95
69) 1,3,5-Trichlorobenzene	14.627	180	129263	26.738	ug/L	99
70) 1,2,4-trichlorobenzene	15.127	180	108766	28.946	ug/L	99
71) Naphthalene	15.359	128	214661	27.081	ug/L	100
72) 1,2,3-Trichlorobenzene	15.548	180	90866	27.753	ug/L	97

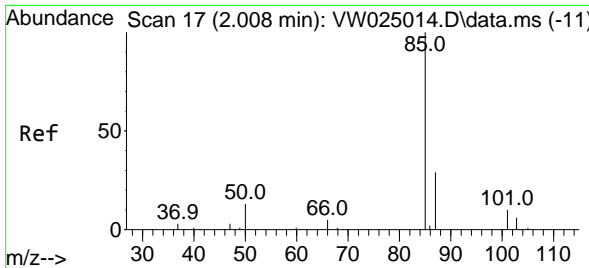
(#) = qualifier out of range (m) = manual integration (+) = signals summed

Data Path : Z:\voasrv\HPCHEM1\MSVOA_W\Data\VW110822\
 Data File : VW025020.D
 Acq On : 08 Nov 2022 10:38
 Operator : SY/VA
 Sample : VSTDCCC025
 Misc : 5.00g/10mL/MSVOA_W/SOIL
 ALS Vial : 1 Sample Multiplier: 1

Instrument :
 MSVOA_W
 ClientSampleId :

Quant Time: Nov 09 00:52:01 2022
 Quant Method : Z:\voasrv\HPCHEM1\MSVOA_W\Method\SFAMWLM102622SMA.M
 Quant Title : SFAM01.0
 QLast Update : Fri Nov 04 04:15:36 2022
 Response via : Initial Calibration

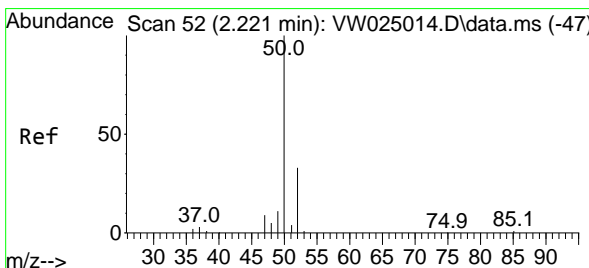
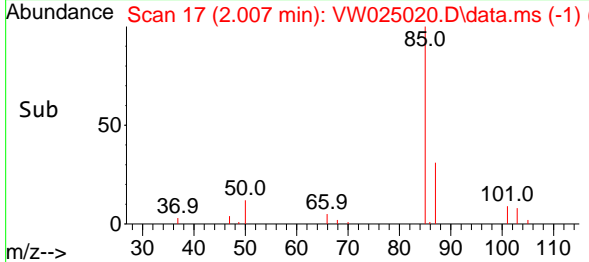
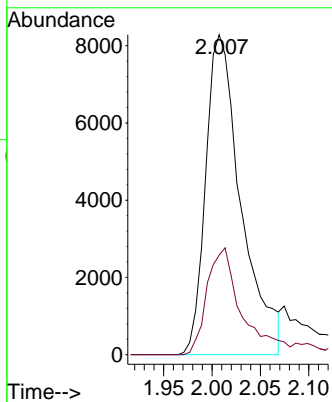
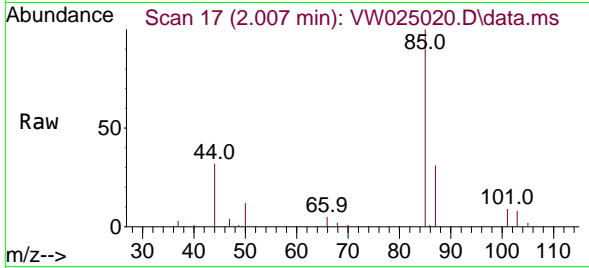




#2
 Dichlorodifluoromethane
 Concen: 27.474 ug/L
 RT: 2.007 min Scan# 11
 Delta R.T. -0.000 min
 Lab File: VW025020.D
 Acq: 08 Nov 2022 10:38

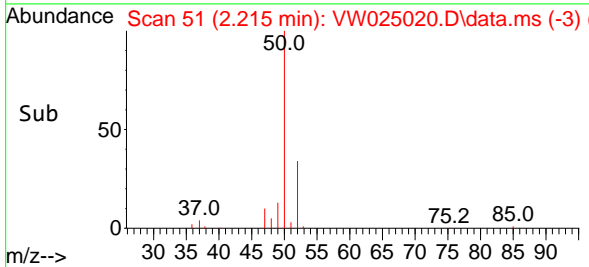
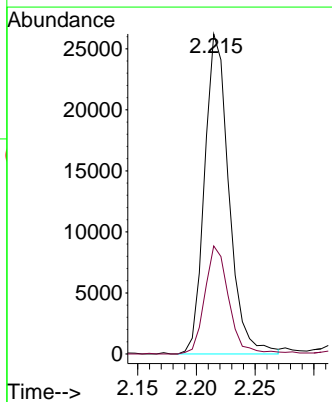
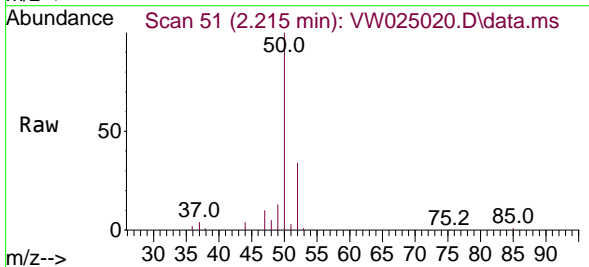
Instrument :
 MSVOA_W
 ClientSampleId :

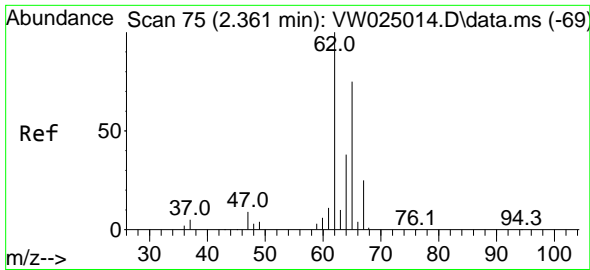
Tgt Ion: 85 Resp: 21116
 Ion Ratio Lower Upper
 85 100
 87 29.4 25.9 38.9



#3
 Chloromethane
 Concen: 20.452 ug/L
 RT: 2.215 min Scan# 51
 Delta R.T. -0.006 min
 Lab File: VW025020.D
 Acq: 08 Nov 2022 10:38

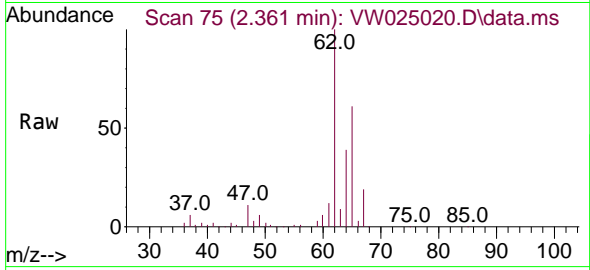
Tgt Ion: 50 Resp: 37807
 Ion Ratio Lower Upper
 50 100
 52 33.7 24.1 44.8



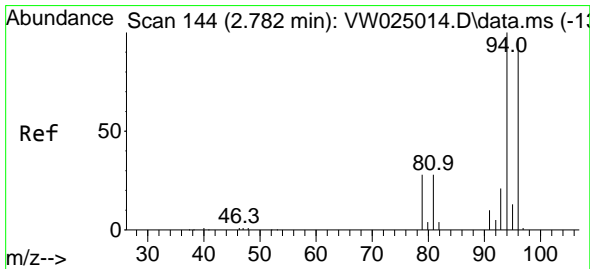
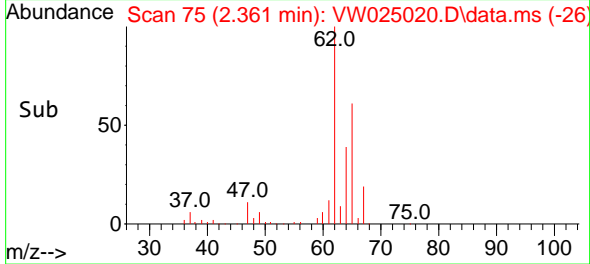
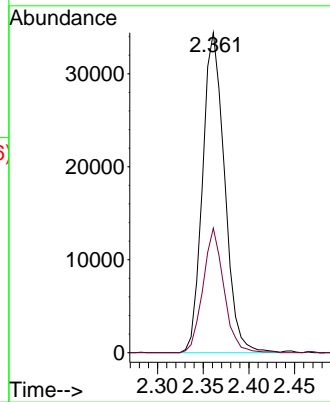


#5
 Vinyl chloride
 Concen: 22.537 ug/L
 RT: 2.361 min Scan# 71
 Delta R.T. -0.000 min
 Lab File: VW025020.D
 Acq: 08 Nov 2022 10:38

Instrument :
 MSVOA_W
 ClientSampled :

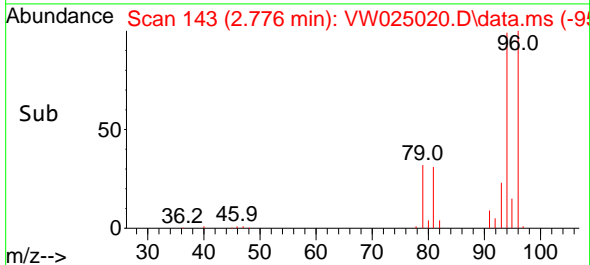
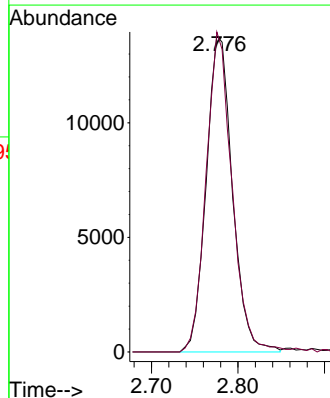
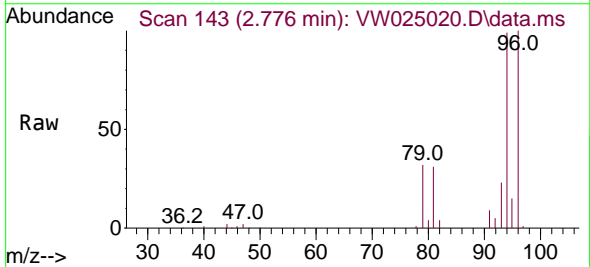


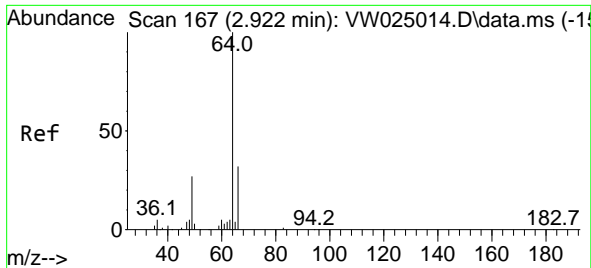
Tgt Ion: 62 Resp: 57564
 Ion Ratio Lower Upper
 62 100
 64 38.9 27.2 50.6



#6
 Bromomethane
 Concen: 22.719 ug/L
 RT: 2.776 min Scan# 143
 Delta R.T. -0.006 min
 Lab File: VW025020.D
 Acq: 08 Nov 2022 10:38

Tgt Ion: 94 Resp: 28959
 Ion Ratio Lower Upper
 94 100
 96 101.2 63.8 118.6

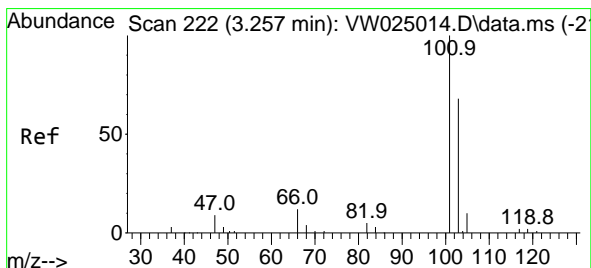
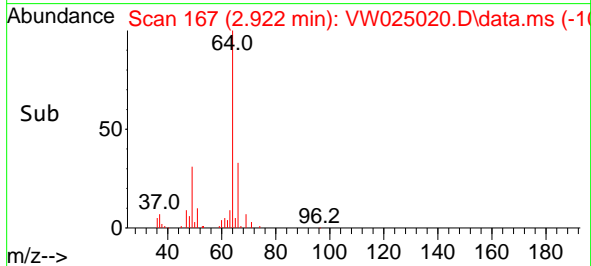
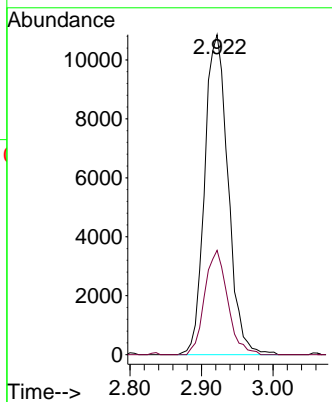
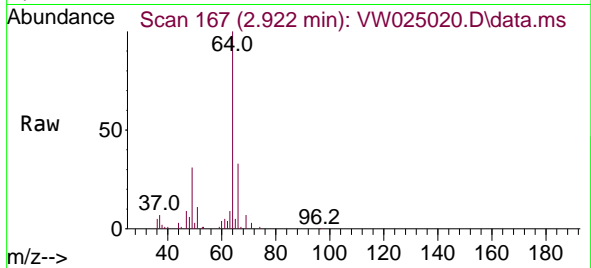




#8
 Chloroethane
 Concen: 23.121 ug/L
 RT: 2.922 min Scan# 167
 Delta R.T. -0.000 min
 Lab File: VW025020.D
 Acq: 08 Nov 2022 10:38

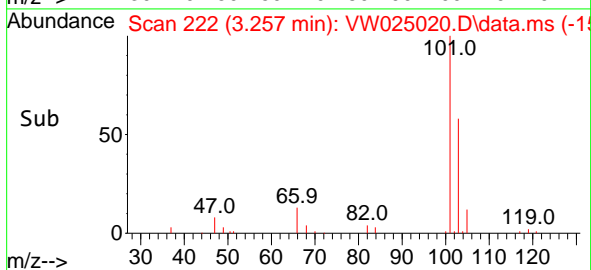
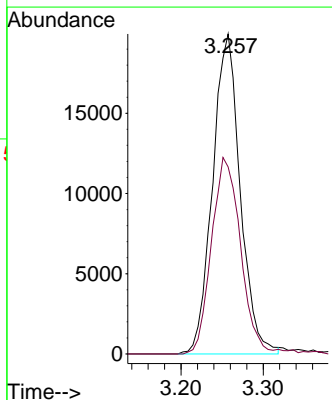
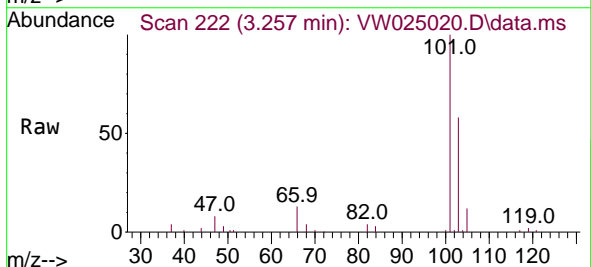
Instrument : MSVOA_W
 ClientSampleId :

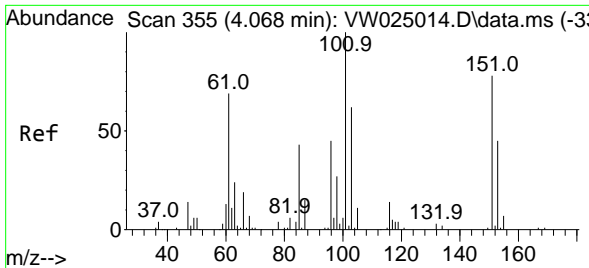
Tgt Ion: 64 Resp: 24635
 Ion Ratio Lower Upper
 64 100
 66 32.6 21.6 40.2



#9
 Trichlorofluoromethane
 Concen: 21.746 ug/L
 RT: 3.257 min Scan# 222
 Delta R.T. -0.000 min
 Lab File: VW025020.D
 Acq: 08 Nov 2022 10:38

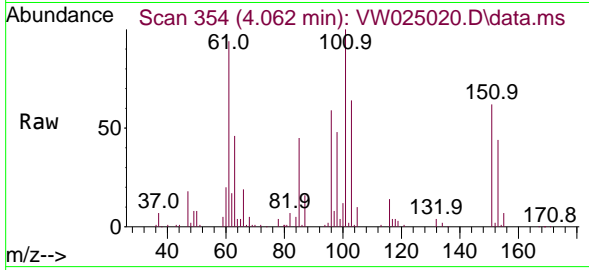
Tgt Ion: 101 Resp: 46595
 Ion Ratio Lower Upper
 101 100
 103 64.2 51.4 77.0



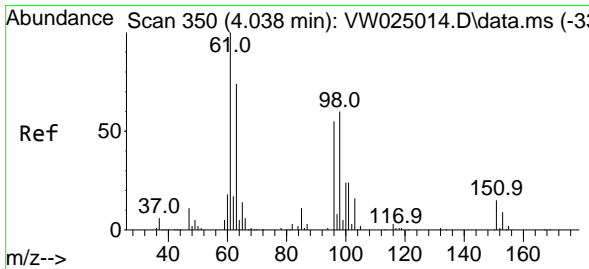
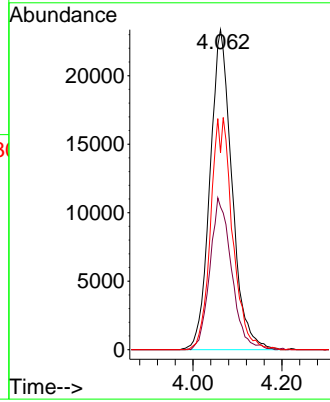
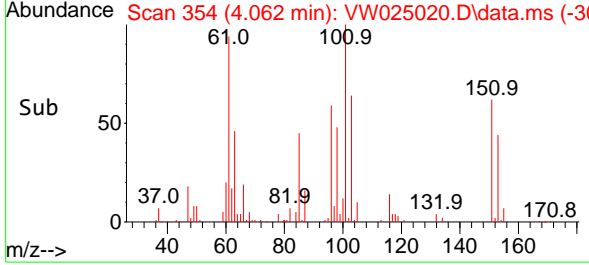


#10
 1,1,2-Trichloro-1,2,2-trifluoroethane
 Concen: 26.412 ug/L
 RT: 4.062 min Scan# 311
 Delta R.T. -0.006 min
 Lab File: VW025020.D
 Acq: 08 Nov 2022 10:38

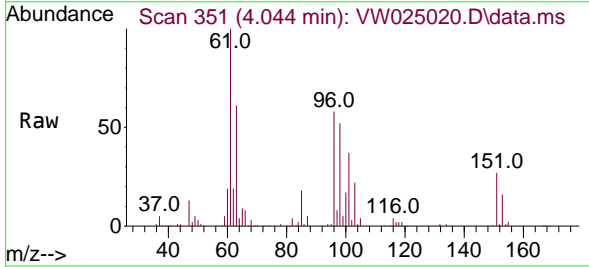
Instrument : MSVOA_W
 ClientSampleId :



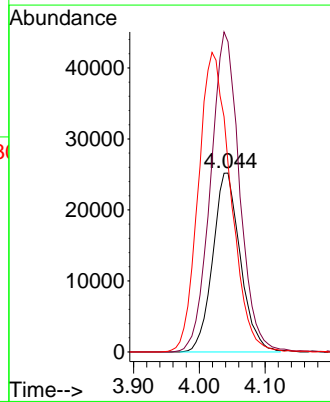
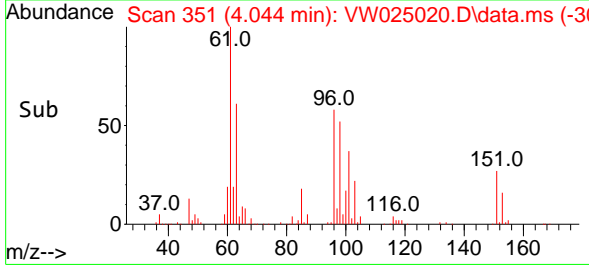
Tgt Ion:101 Resp: 80142
 Ion Ratio Lower Upper
 101 100
 85 46.2 36.5 54.7
 151 35.6 57.3 85.9#

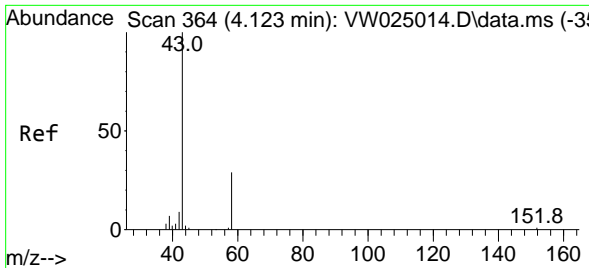


#12
 1,1-Dichloroethene
 Concen: 25.711 ug/L
 RT: 4.044 min Scan# 351
 Delta R.T. 0.006 min
 Lab File: VW025020.D
 Acq: 08 Nov 2022 10:38



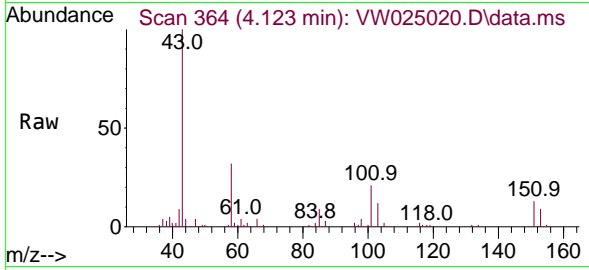
Tgt Ion: 96 Resp: 73493
 Ion Ratio Lower Upper
 96 100
 61 173.4 126.2 234.4
 63 105.3 98.3 182.7



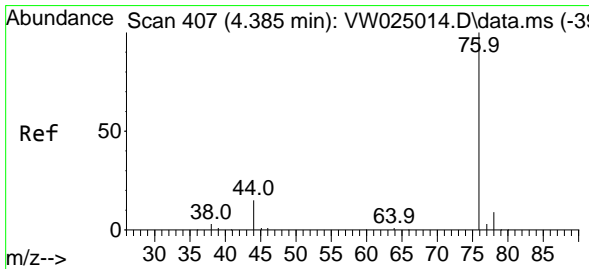
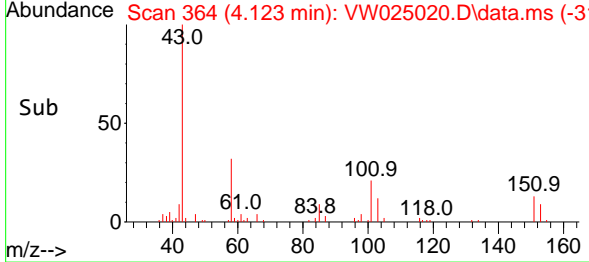
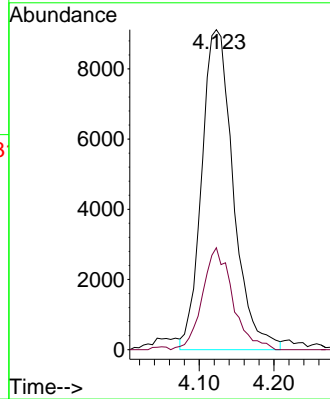


#13
 Acetone
 Concen: 43.232 ug/L
 RT: 4.123 min Scan# 364
 Delta R.T. -0.000 min
 Lab File: VW025020.D
 Acq: 08 Nov 2022 10:38

Instrument :
 MSVOA_W
 ClientSampleId :

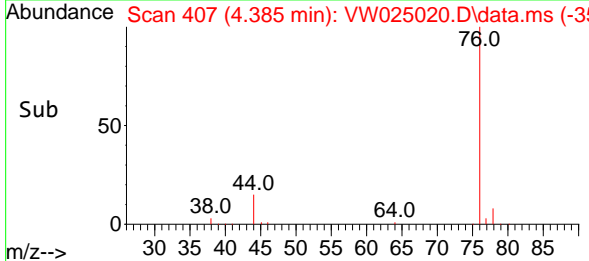
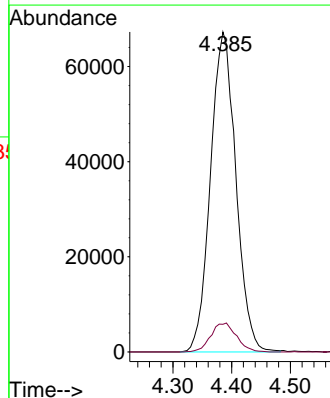
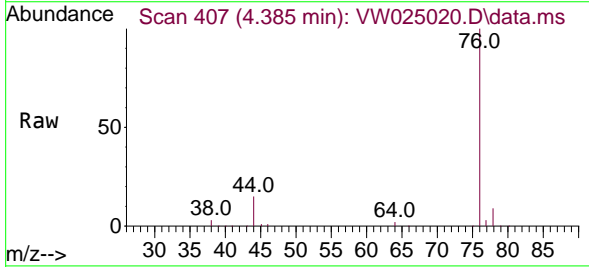


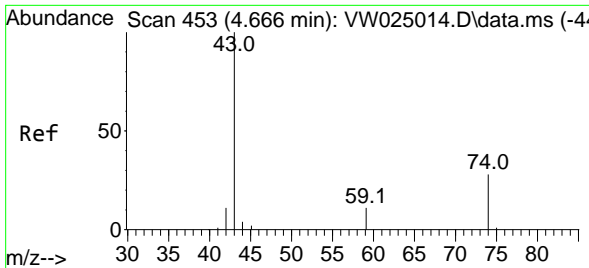
Tgt Ion: 43 Resp: 26809
 Ion Ratio Lower Upper
 43 100
 58 30.4 0.0 65.4



#14
 Carbon disulfide
 Concen: 24.231 ug/L
 RT: 4.385 min Scan# 407
 Delta R.T. -0.000 min
 Lab File: VW025020.D
 Acq: 08 Nov 2022 10:38

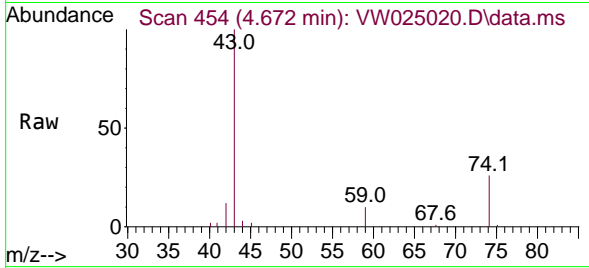
Tgt Ion: 76 Resp: 202321
 Ion Ratio Lower Upper
 76 100
 78 8.6 6.8 10.2



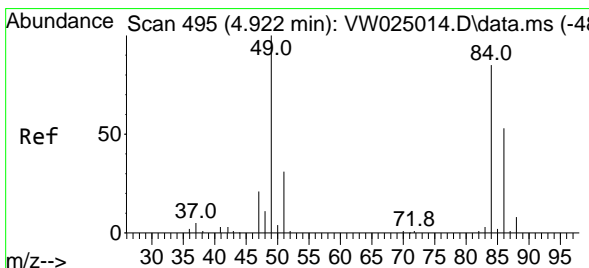
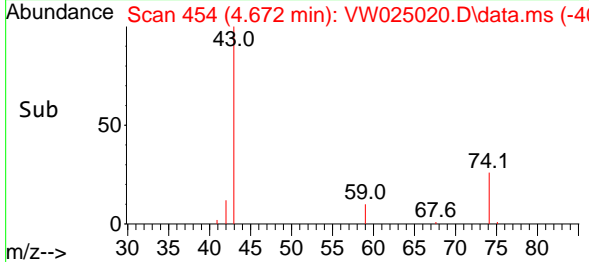
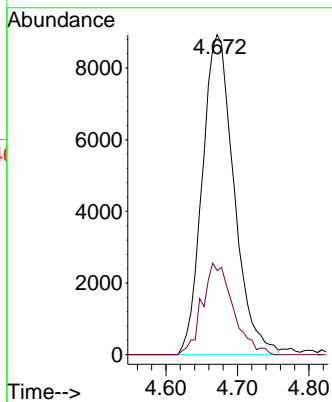


#15
 Methyl Acetate
 Concen: 22.248 ug/L
 RT: 4.672 min Scan# 41
 Delta R.T. 0.006 min
 Lab File: VW025020.D
 Acq: 08 Nov 2022 10:38

Instrument :
 MSVOA_W
 ClientSampleId :

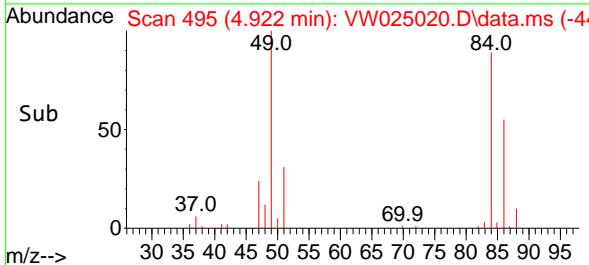
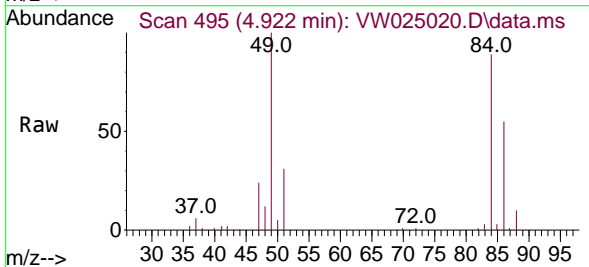
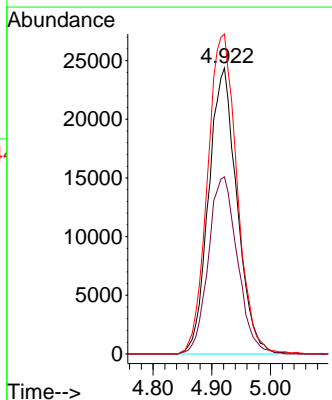


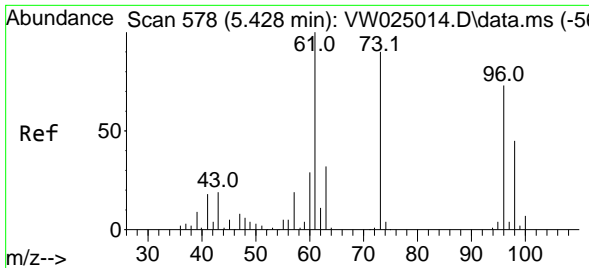
Tgt Ion: 43 Resp: 27468
 Ion Ratio Lower Upper
 43 100
 74 27.5 20.6 30.8



#16
 Methylene chloride
 Concen: 19.945 ug/L
 RT: 4.922 min Scan# 495
 Delta R.T. -0.000 min
 Lab File: VW025020.D
 Acq: 08 Nov 2022 10:38

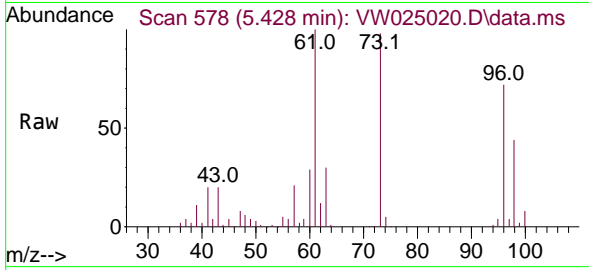
Tgt Ion: 84 Resp: 81602
 Ion Ratio Lower Upper
 84 100
 86 61.9 42.6 79.0
 49 111.9 81.9 152.1





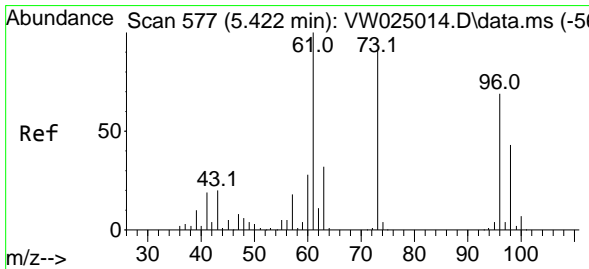
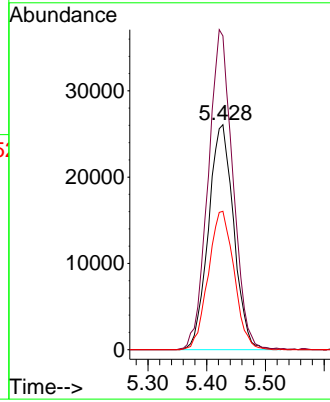
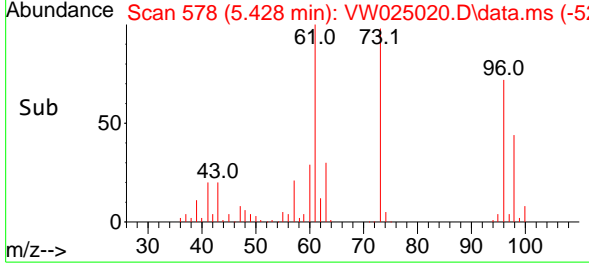
#17
 trans-1,2-Dichloroethene
 Concen: 25.452 ug/L
 RT: 5.428 min Scan# 578
 Delta R.T. -0.000 min
 Lab File: VW025020.D
 Acq: 08 Nov 2022 10:38

Instrument : MSVOA_W
 ClientSampleId :

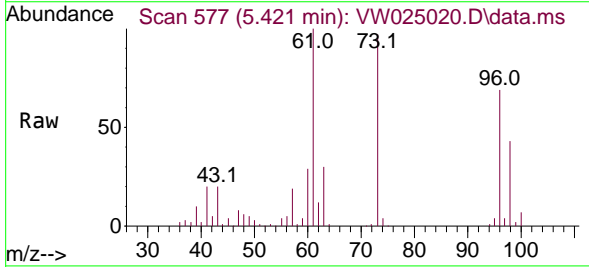


Tgt Ion: 96 Resp: 77902

Ion	Ratio	Lower	Upper
96	100		
61	139.5	97.6	181.2
98	61.6	46.8	86.8

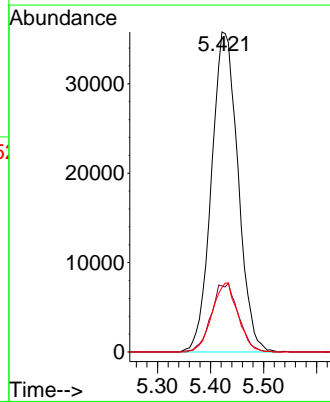
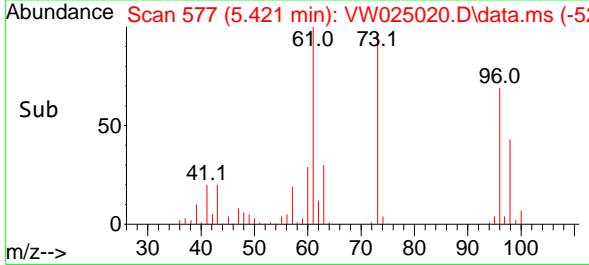


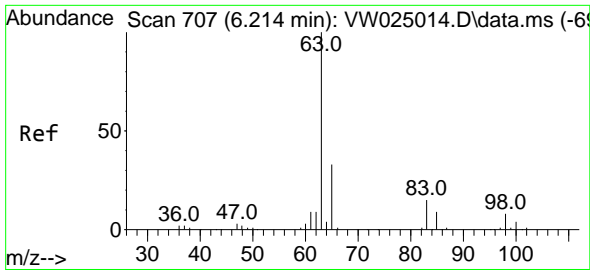
#18
 Methyl tert-butyl Ether
 Concen: 24.274 ug/L
 RT: 5.421 min Scan# 577
 Delta R.T. -0.000 min
 Lab File: VW025020.D
 Acq: 08 Nov 2022 10:38



Tgt Ion: 73 Resp: 124631

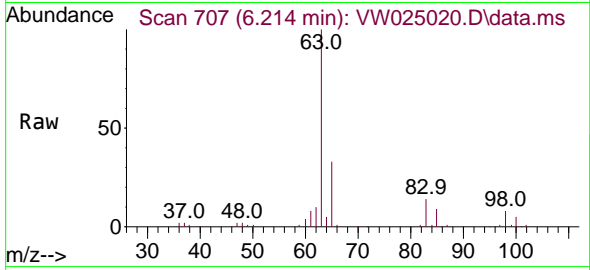
Ion	Ratio	Lower	Upper
73	100		
43	12.2	16.6	24.8#
57	20.9	17.1	25.7



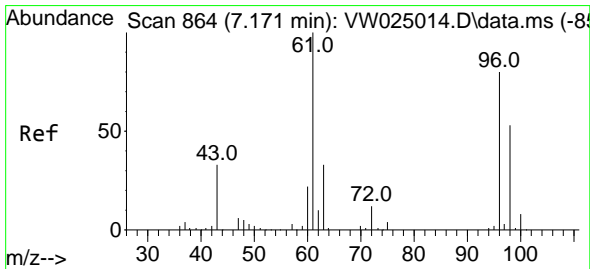
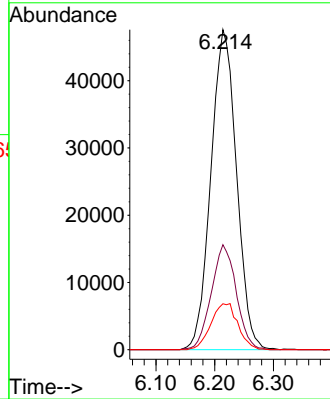
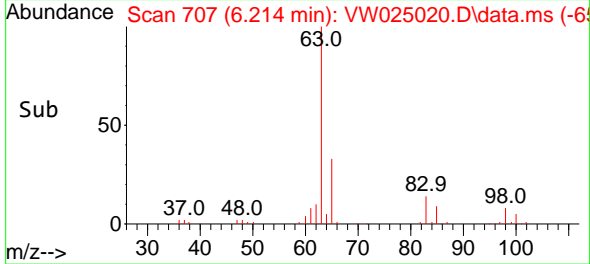


#19
 1,1-Dichloroethane
 Concen: 25.481 ug/L
 RT: 6.214 min Scan# 707
 Delta R.T. -0.000 min
 Lab File: VW025020.D
 Acq: 08 Nov 2022 10:38

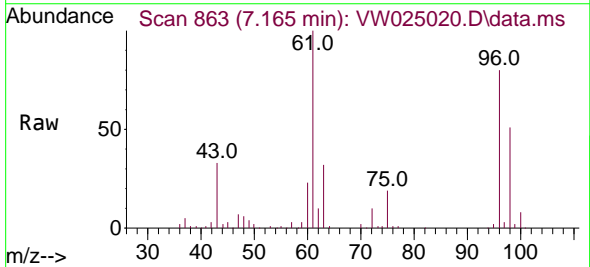
Instrument :
 MSVOA_W
 ClientSampleId :



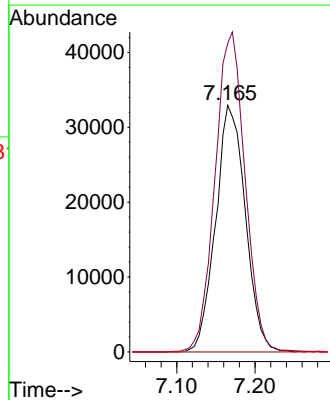
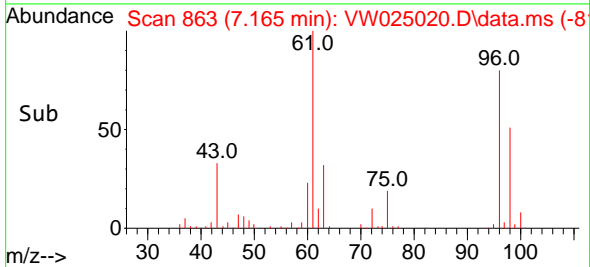
Tgt Ion: 63 Resp: 144391
 Ion Ratio Lower Upper
 63 100
 65 32.8 22.2 41.2
 83 14.3 9.7 17.9

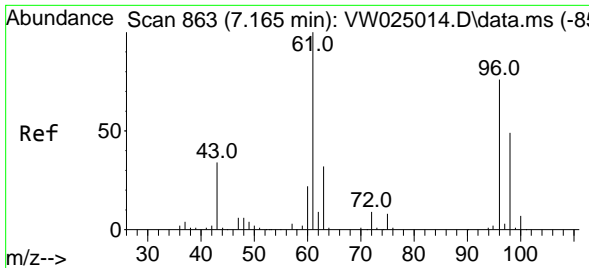


#20
 cis-1,2-Dichloroethene
 Concen: 26.038 ug/L
 RT: 7.165 min Scan# 863
 Delta R.T. -0.006 min
 Lab File: VW025020.D
 Acq: 08 Nov 2022 10:38



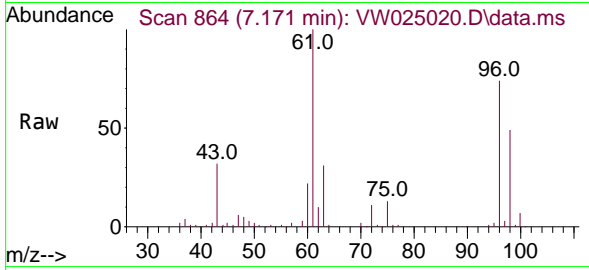
Tgt Ion: 96 Resp: 86863
 Ion Ratio Lower Upper
 96 100
 61 125.1 91.8 170.6
 68 0.0 0.0 0.0



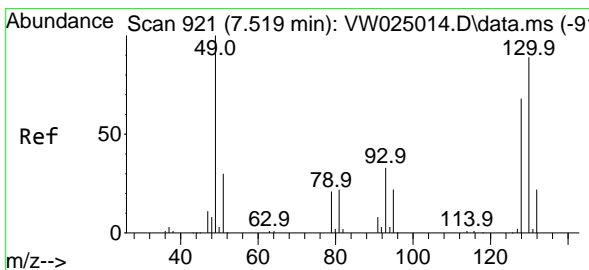
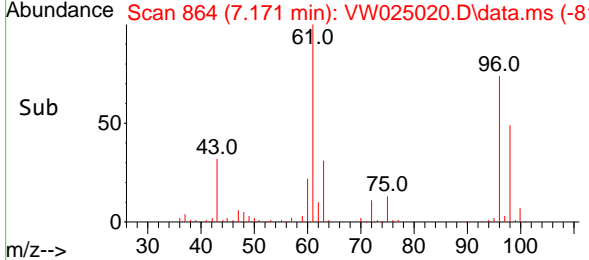
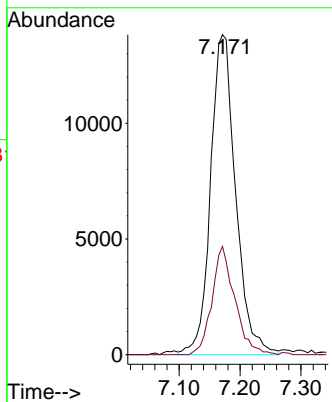


#22
 2-Butanone
 Concen: 42.612 ug/L
 RT: 7.171 min Scan# 80
 Delta R.T. 0.006 min
 Lab File: VW025020.D
 Acq: 08 Nov 2022 10:38

Instrument :
 MSVOA_W
 ClientSampleId :

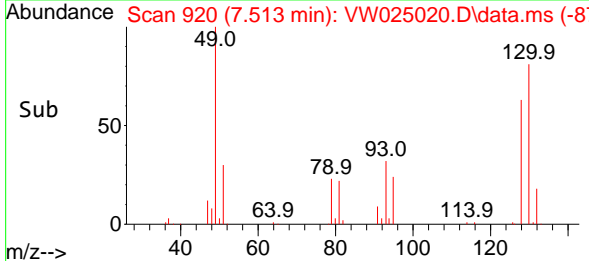
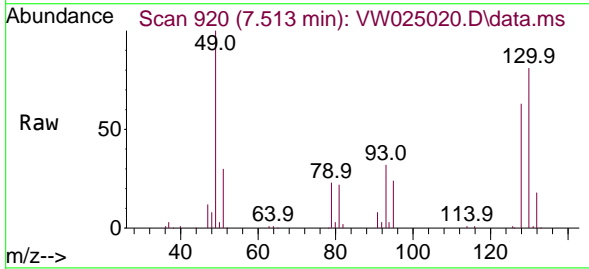
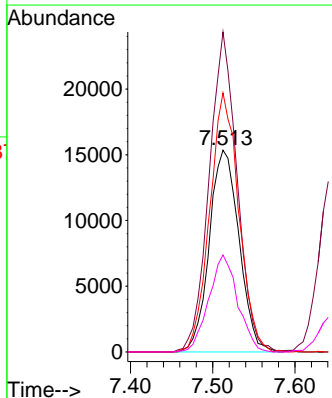


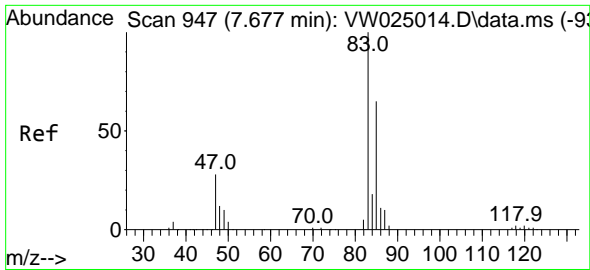
Tgt Ion: 43 Resp: 39590
 Ion Ratio Lower Upper
 43 100
 72 30.7 14.6 44.0



#23
 Bromochloromethane
 Concen: 26.722 ug/L
 RT: 7.513 min Scan# 920
 Delta R.T. -0.006 min
 Lab File: VW025020.D
 Acq: 08 Nov 2022 10:38

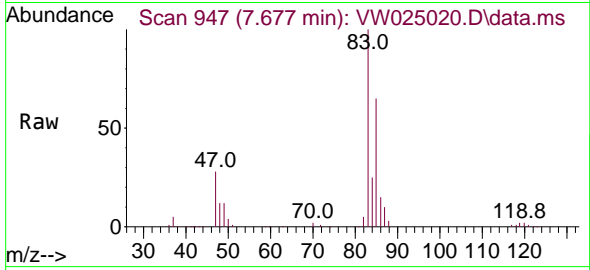
Tgt Ion:128 Resp: 38646
 Ion Ratio Lower Upper
 128 100
 49 158.5 112.8 209.4
 130 128.3 86.2 160.2
 51 48.1 41.6 62.4



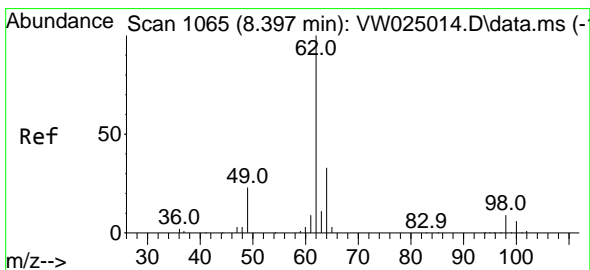
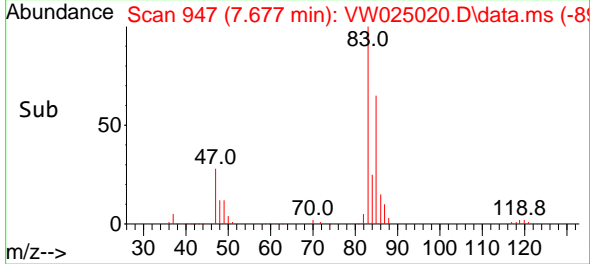
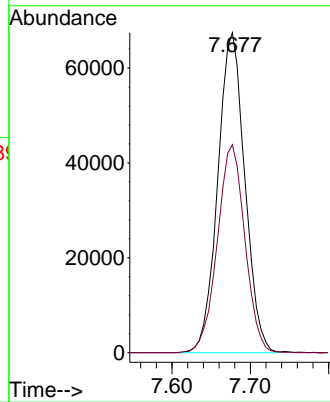


#25
 Chloroform
 Concen: 27.043 ug/L
 RT: 7.677 min Scan# 94
 Delta R.T. -0.000 min
 Lab File: VW025020.D
 Acq: 08 Nov 2022 10:38

Instrument :
 MSVOA_W
 ClientSampleId :

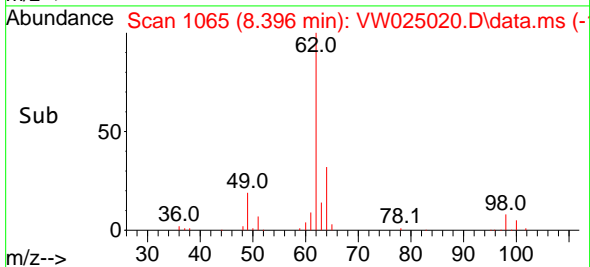
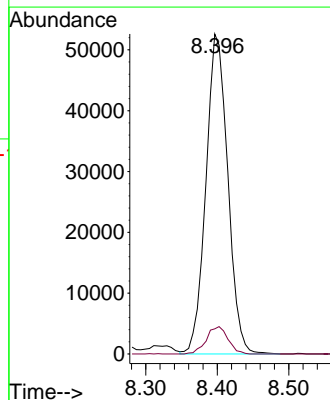
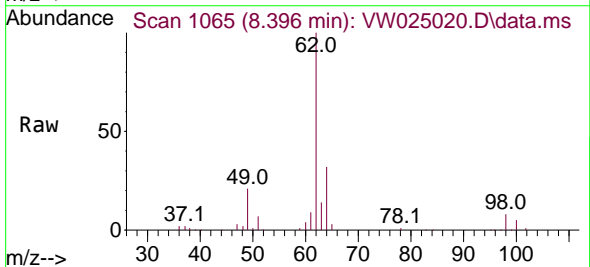


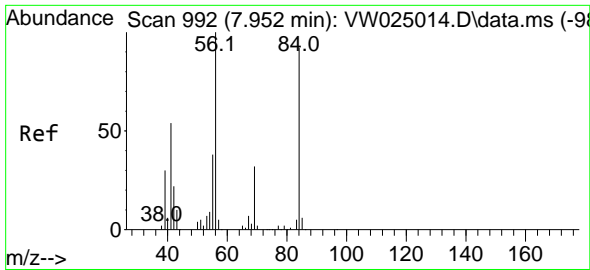
Tgt Ion: 83 Resp: 161730
 Ion Ratio Lower Upper
 83 100
 85 65.0 47.5 88.3



#27
 1,2-Dichloroethane
 Concen: 27.594 ug/L
 RT: 8.396 min Scan# 1065
 Delta R.T. -0.000 min
 Lab File: VW025020.D
 Acq: 08 Nov 2022 10:38

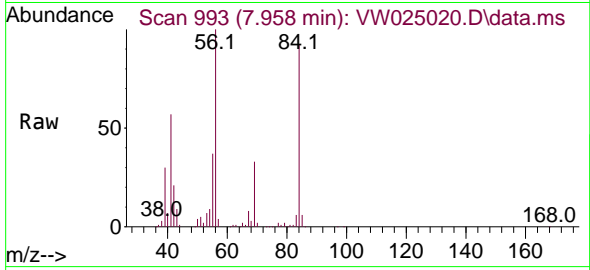
Tgt Ion: 62 Resp: 111938
 Ion Ratio Lower Upper
 62 100
 98 7.9 7.0 10.4



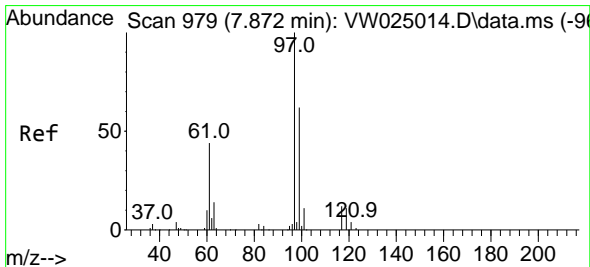
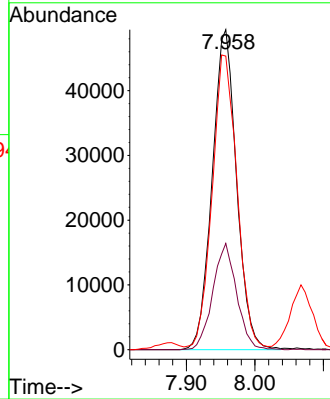
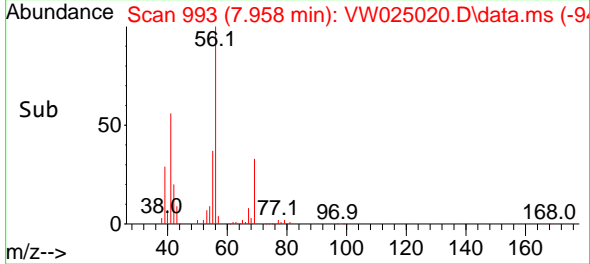


#29
 Cyclohexane
 Concen: 24.499 ug/L
 RT: 7.958 min Scan# 992
 Delta R.T. 0.006 min
 Lab File: VW025020.D
 Acq: 08 Nov 2022 10:38

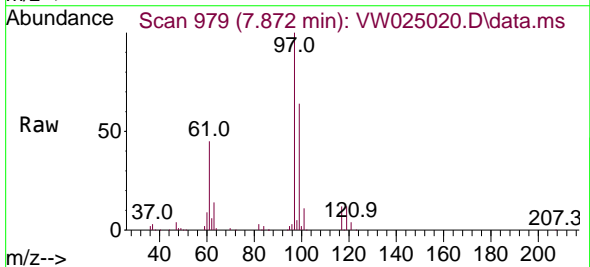
Instrument :
 MSVOA_W
 ClientSampled :



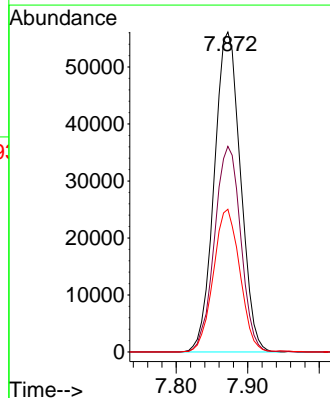
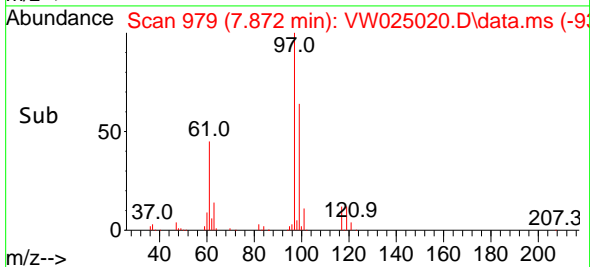
Tgt Ion: 56 Resp: 121873
 Ion Ratio Lower Upper
 56 100
 69 32.5 25.0 37.4
 84 94.6 72.6 108.8

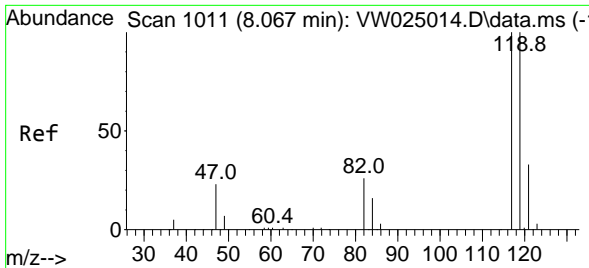


#30
 1,1,1-Trichloroethane
 Concen: 27.758 ug/L
 RT: 7.872 min Scan# 979
 Delta R.T. -0.000 min
 Lab File: VW025020.D
 Acq: 08 Nov 2022 10:38



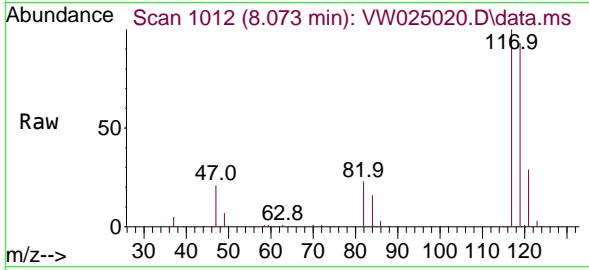
Tgt Ion: 97 Resp: 143106
 Ion Ratio Lower Upper
 97 100
 99 64.3 51.8 77.8
 61 45.2 36.6 54.8



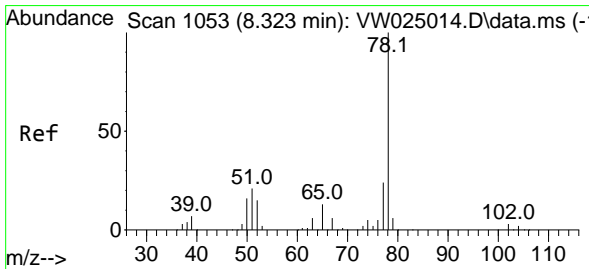
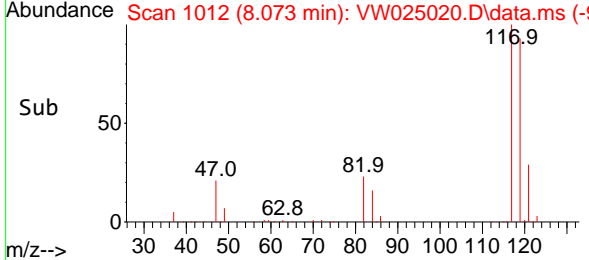
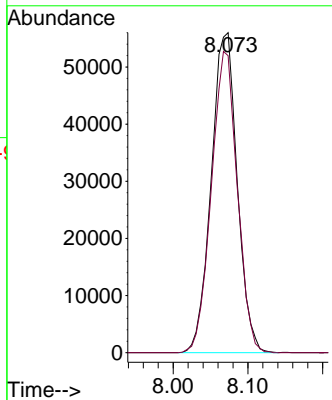


#31
 Carbon tetrachloride
 Concen: 29.383 ug/L
 RT: 8.073 min Scan# 1011
 Delta R.T. 0.006 min
 Lab File: VW025020.D
 Acq: 08 Nov 2022 10:38

Instrument : MSVOA_W
 ClientSampleId :

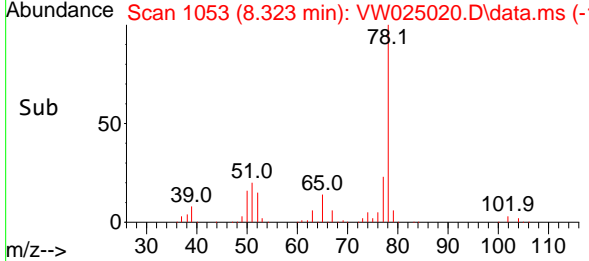
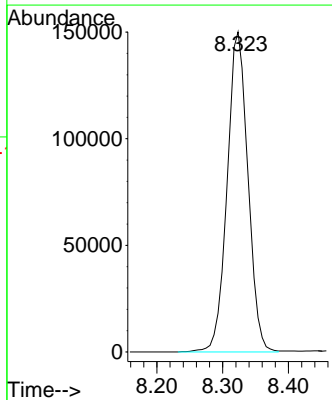
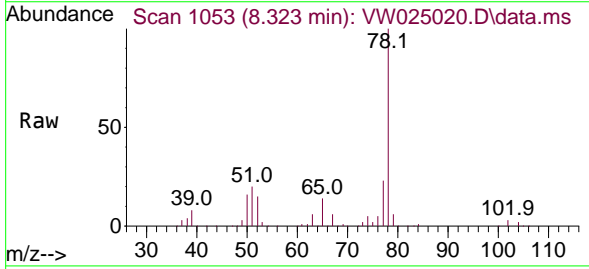


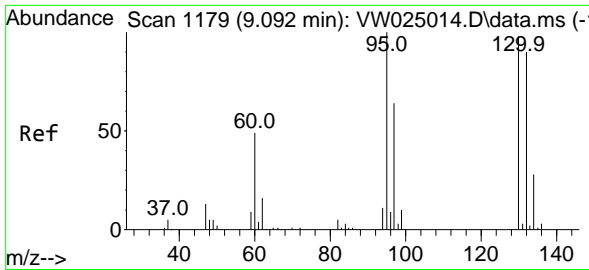
Tgt Ion:117 Resp: 135366
 Ion Ratio Lower Upper
 117 100
 119 93.8 77.7 116.5



#33
 Benzene
 Concen: 26.007 ug/L
 RT: 8.323 min Scan# 1053
 Delta R.T. -0.000 min
 Lab File: VW025020.D
 Acq: 08 Nov 2022 10:38

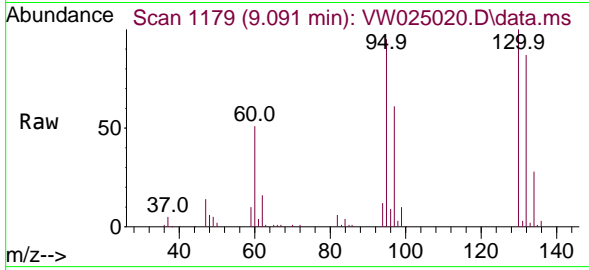
Tgt Ion: 78 Resp: 329950



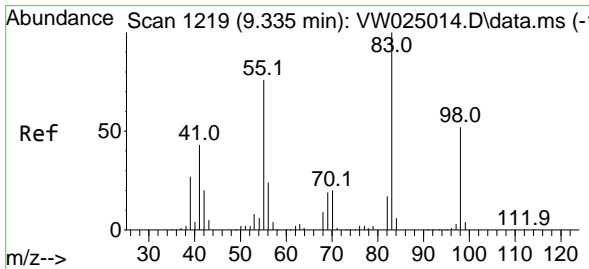
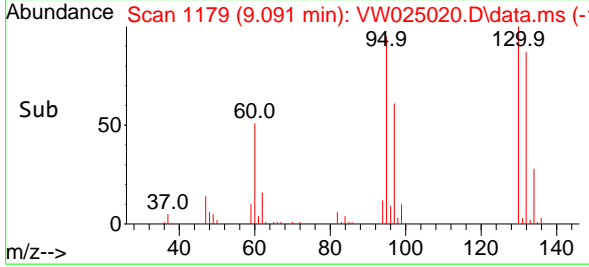
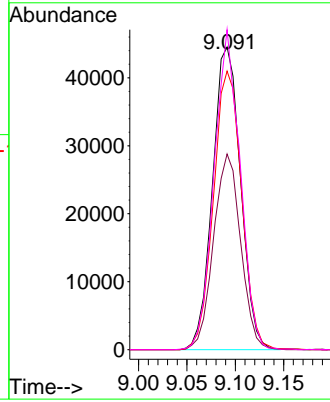


#34
 Trichloroethene
 Concen: 26.657 ug/L
 RT: 9.091 min Scan# 1179
 Delta R.T. -0.000 min
 Lab File: VW025020.D
 Acq: 08 Nov 2022 10:38

Instrument :
 MSVOA_W
 ClientSampleId :

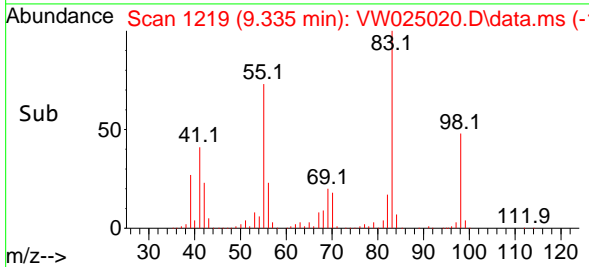
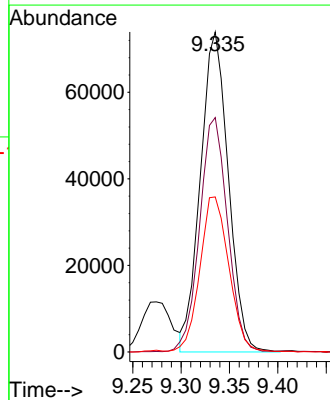
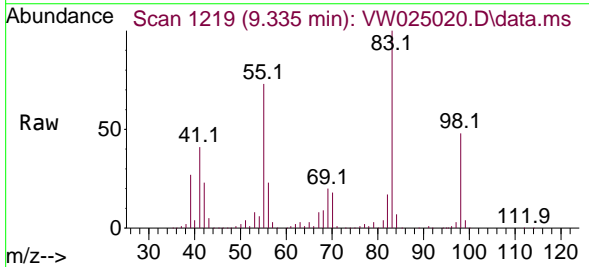


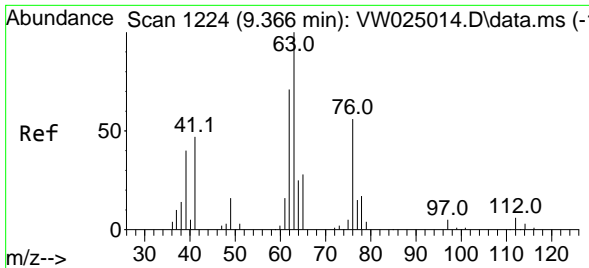
Tgt Ion: 95 Resp: 89525
 Ion Ratio Lower Upper
 95 100
 97 64.7 44.7 83.1
 132 92.1 62.6 116.2
 130 105.7 69.1 128.3



#35
 Methylcyclohexane
 Concen: 26.072 ug/L
 RT: 9.335 min Scan# 1219
 Delta R.T. -0.000 min
 Lab File: VW025020.D
 Acq: 08 Nov 2022 10:38

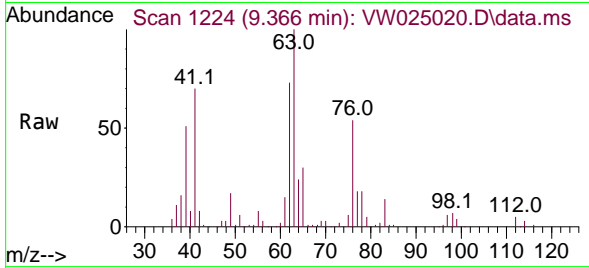
Tgt Ion: 83 Resp: 148781
 Ion Ratio Lower Upper
 83 100
 55 73.1 60.4 90.6
 98 50.4 39.5 59.3



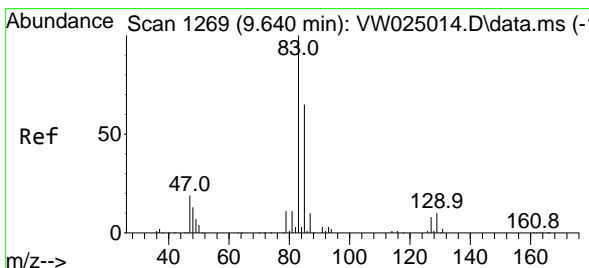
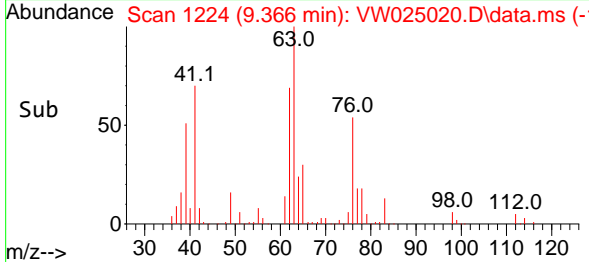
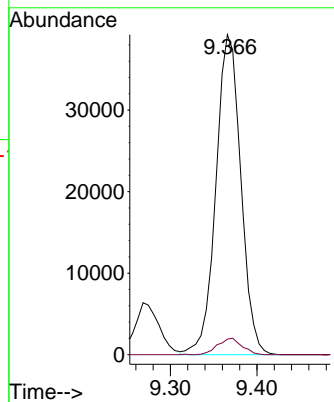


#37
 1,2-Dichloropropane
 Concen: 25.495 ug/L
 RT: 9.366 min Scan# 11
 Delta R.T. -0.000 min
 Lab File: VW025020.D
 Acq: 08 Nov 2022 10:38

Instrument :
 MSVOA_W
 ClientSampleId :

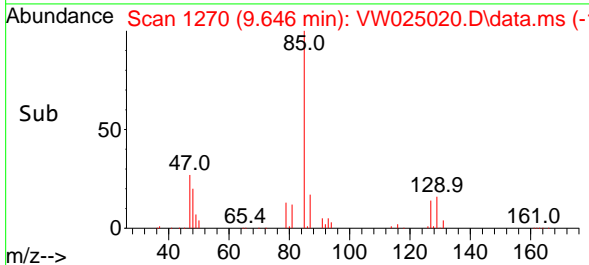
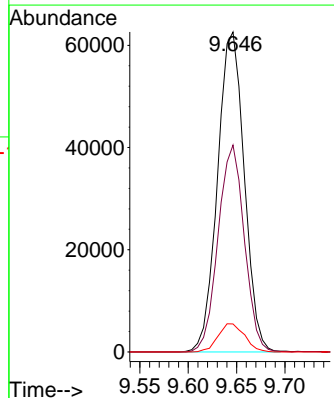
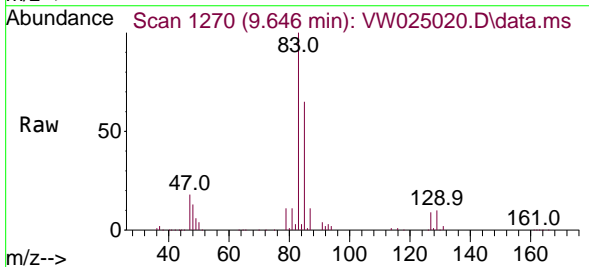


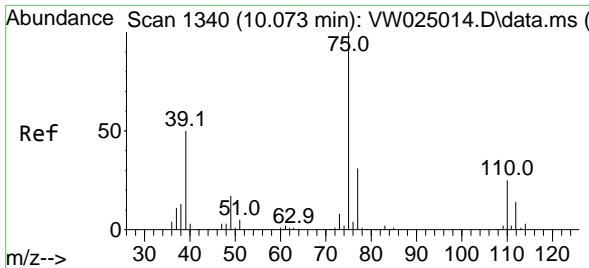
Tgt Ion: 63 Resp: 78504
 Ion Ratio Lower Upper
 63 100
 112 5.0 3.6 5.4



#38
 Bromodichloromethane
 Concen: 27.978 ug/L
 RT: 9.646 min Scan# 1270
 Delta R.T. 0.006 min
 Lab File: VW025020.D
 Acq: 08 Nov 2022 10:38

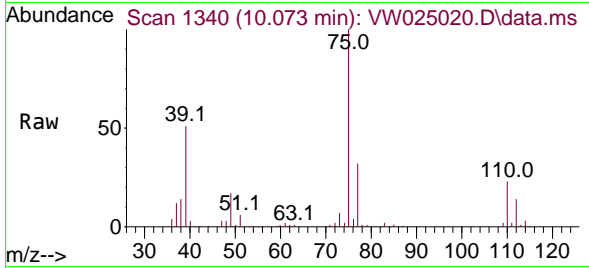
Tgt Ion: 83 Resp: 120237
 Ion Ratio Lower Upper
 83 100
 85 64.7 45.8 85.0
 127 8.7 6.8 10.2



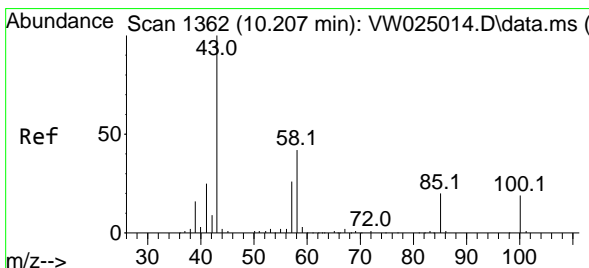
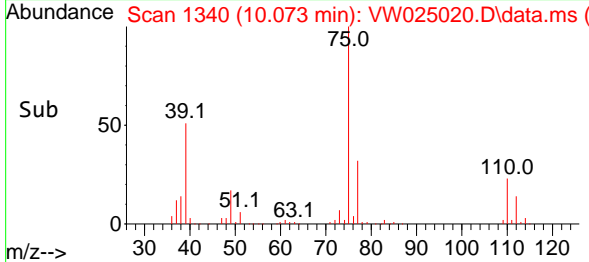
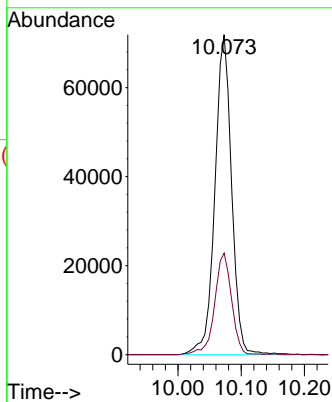


#39
 cis-1,3-Dichloropropene
 Concen: 27.063 ug/L
 RT: 10.073 min Scan# 1340
 Delta R.T. -0.000 min
 Lab File: VW025020.D
 Acq: 08 Nov 2022 10:38

Instrument : MSVOA_W
 ClientSampleId :

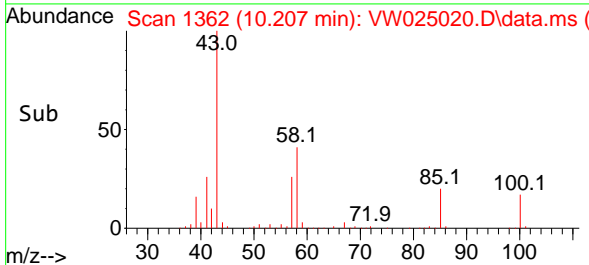
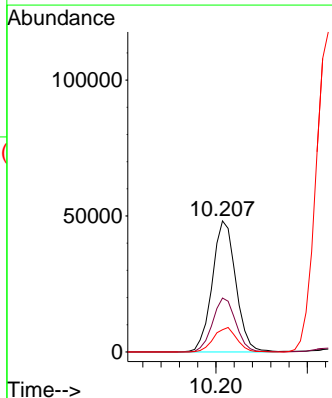
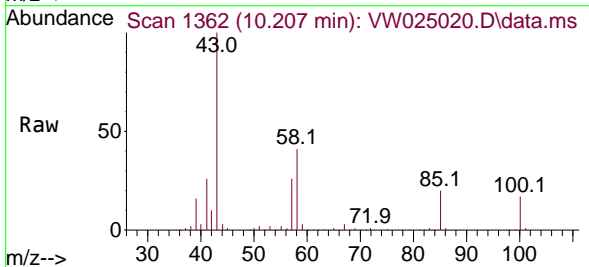


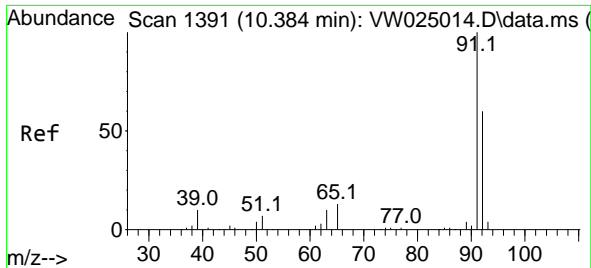
Tgt Ion: 75 Resp: 131737
 Ion Ratio Lower Upper
 75 100
 77 31.8 22.6 42.0



#40
 4-Methyl-2-pentanone
 Concen: 47.771 ug/L
 RT: 10.207 min Scan# 1362
 Delta R.T. -0.000 min
 Lab File: VW025020.D
 Acq: 08 Nov 2022 10:38

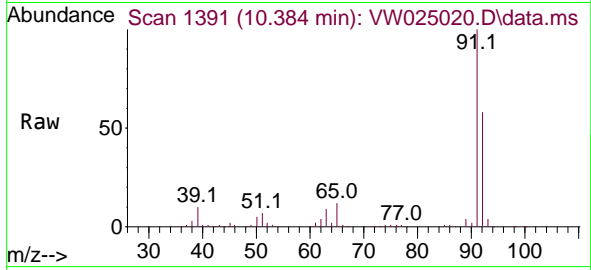
Tgt Ion: 43 Resp: 86320
 Ion Ratio Lower Upper
 43 100
 58 40.6 32.6 48.8
 100 18.4 14.0 21.0



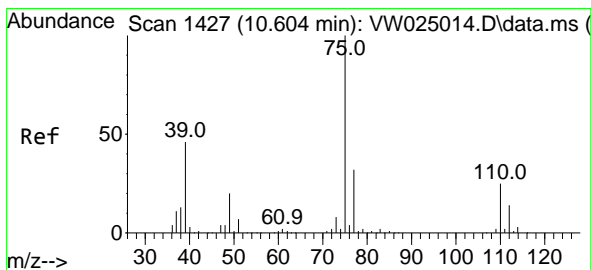
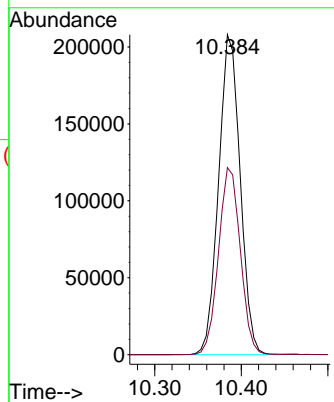
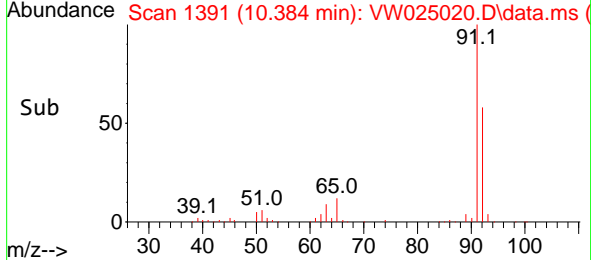


#42
 Toluene
 Concen: 26.744 ug/L
 RT: 10.384 min Scan# 1391
 Delta R.T. -0.000 min
 Lab File: VW025020.D
 Acq: 08 Nov 2022 10:38

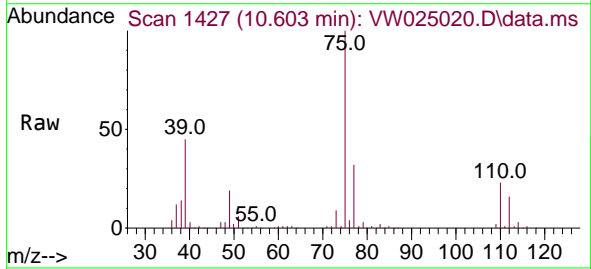
Instrument :
 MSVOA_W
 ClientSampleId :



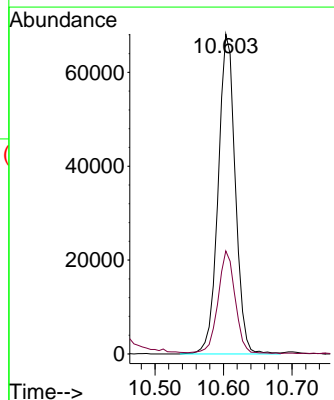
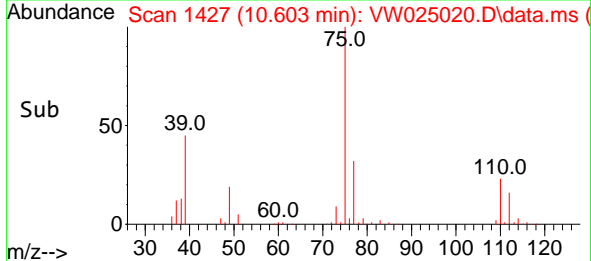
Tgt Ion: 91 Resp: 360215
 Ion Ratio Lower Upper
 91 100
 92 58.5 38.6 71.8

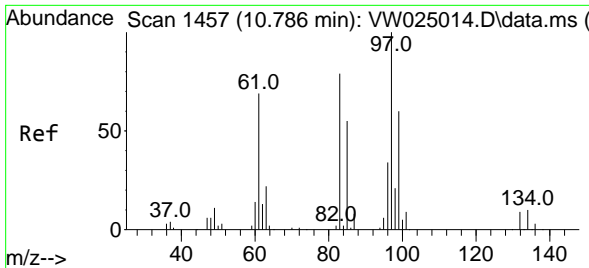


#44
 trans-1,3-Dichloropropene
 Concen: 27.233 ug/L
 RT: 10.603 min Scan# 1427
 Delta R.T. -0.000 min
 Lab File: VW025020.D
 Acq: 08 Nov 2022 10:38



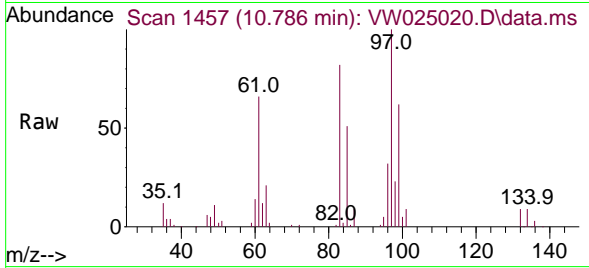
Tgt Ion: 75 Resp: 117852
 Ion Ratio Lower Upper
 75 100
 77 32.2 22.3 41.5





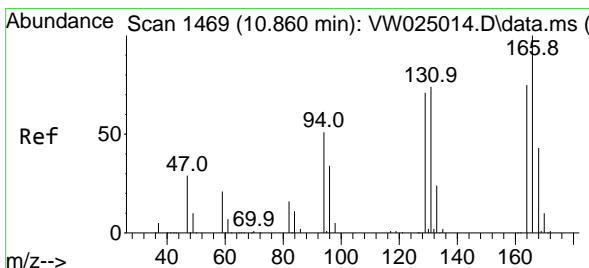
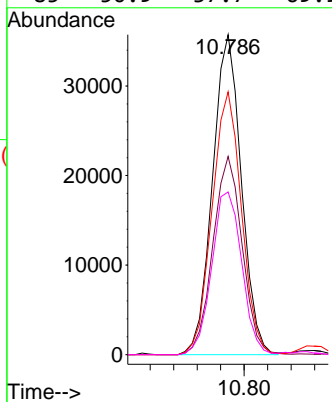
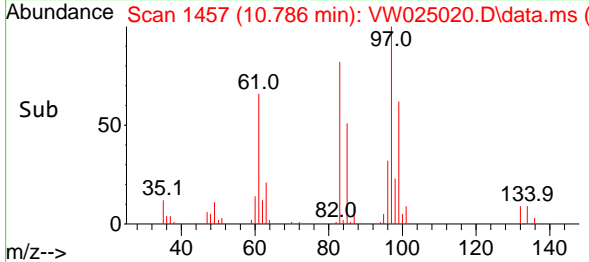
#45
 1,1,2-Trichloroethane
 Concen: 26.202 ug/L
 RT: 10.786 min Scan# 1457
 Delta R.T. -0.000 min
 Lab File: VW025020.D
 Acq: 08 Nov 2022 10:38

Instrument : MSVOA_W
 ClientSampleId :

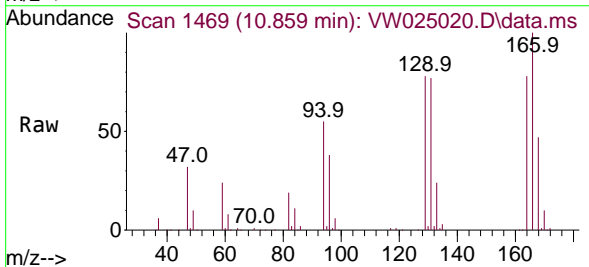


Tgt Ion: 97 Resp: 60918

Ion	Ratio	Lower	Upper
97	100		
99	61.9	44.0	81.6
83	82.1	59.9	111.3
85	50.9	37.7	69.9

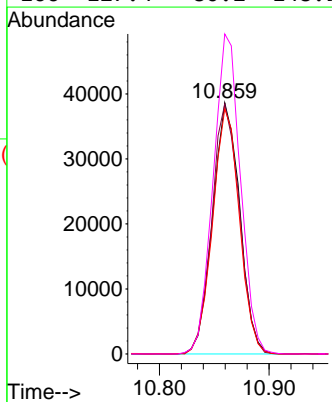
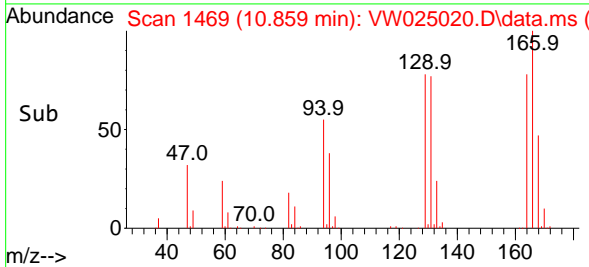


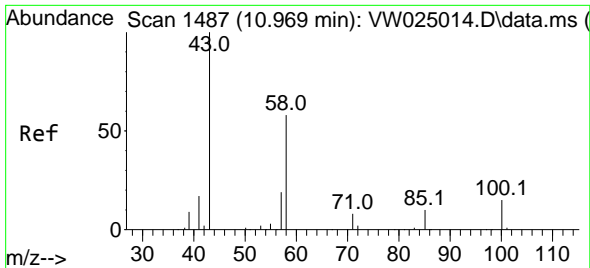
#46
 Tetrachloroethene
 Concen: 27.709 ug/L
 RT: 10.859 min Scan# 1469
 Delta R.T. -0.000 min
 Lab File: VW025020.D
 Acq: 08 Nov 2022 10:38



Tgt Ion: 164 Resp: 66552

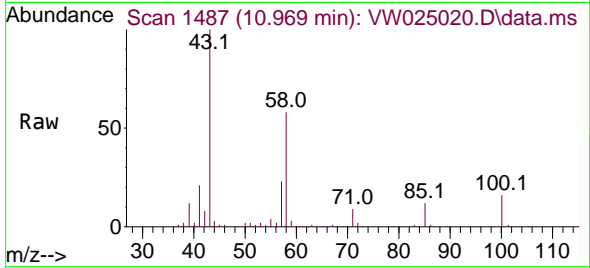
Ion	Ratio	Lower	Upper
164	100		
129	99.5	72.9	135.5
131	97.6	70.1	130.3
166	127.4	80.2	148.9



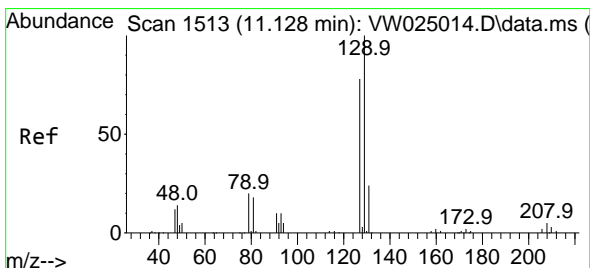
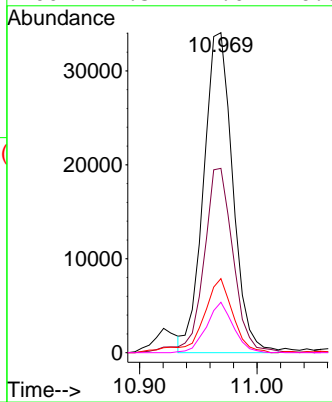
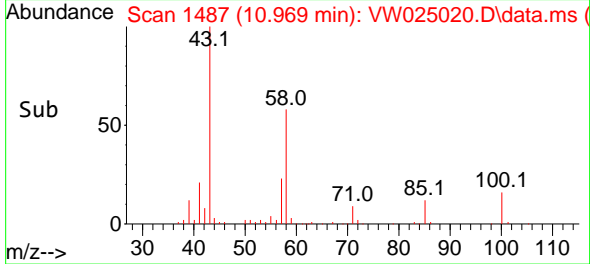


#48
 2-Hexanone
 Concen: 46.990 ug/L
 RT: 10.969 min Scan# 1487
 Delta R.T. -0.000 min
 Lab File: VW025020.D
 Acq: 08 Nov 2022 10:38

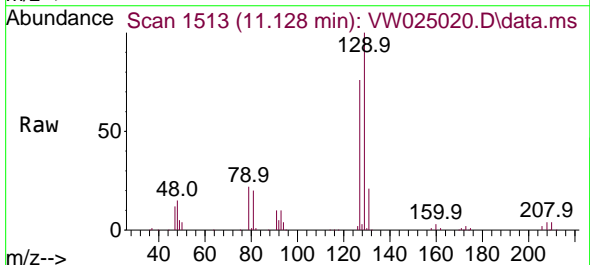
Instrument : MSVOA_W
 ClientSampleId :



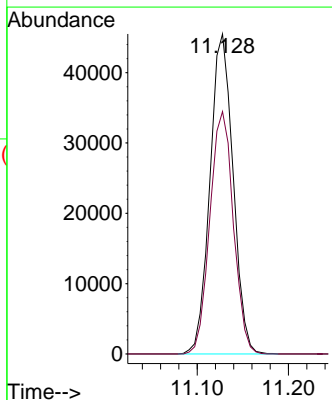
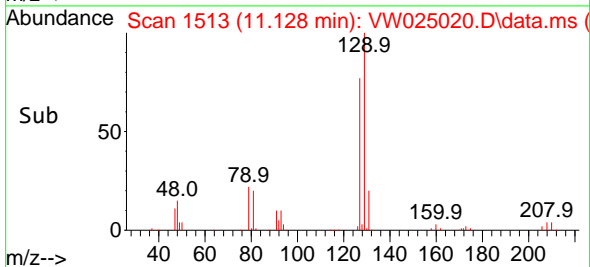
Tgt Ion: 43 Resp: 58721
 Ion Ratio Lower Upper
 43 100
 58 56.3 46.1 69.1
 57 22.2 16.2 24.2
 100 14.5 11.0 16.6

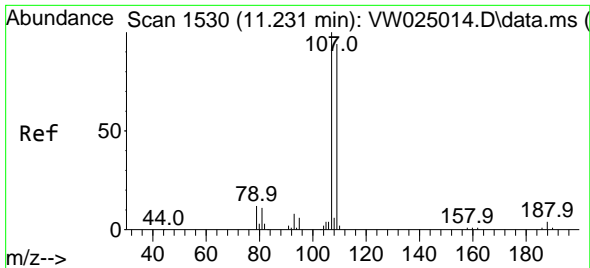


#49
 Dibromochloromethane
 Concen: 28.182 ug/L
 RT: 11.128 min Scan# 1513
 Delta R.T. -0.000 min
 Lab File: VW025020.D
 Acq: 08 Nov 2022 10:38



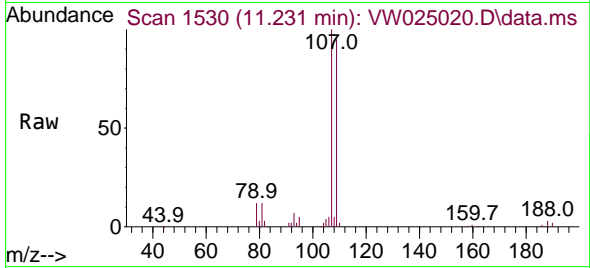
Tgt Ion:129 Resp: 79867
 Ion Ratio Lower Upper
 129 100
 127 75.8 53.2 98.8



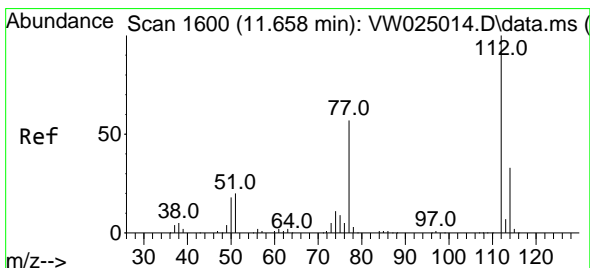
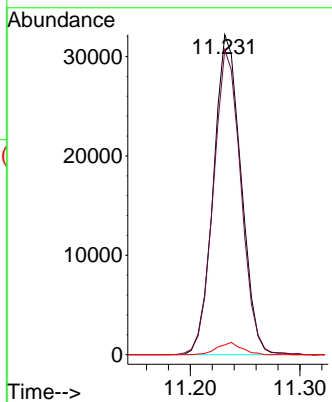
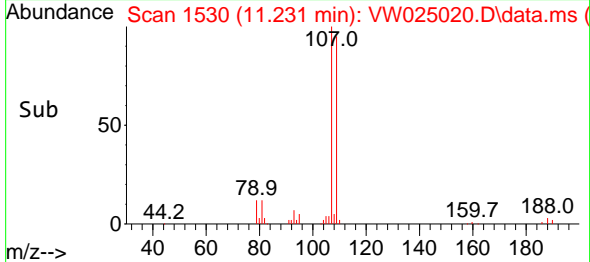


#50
 1,2-Dibromoethane
 Concen: 25.533 ug/L
 RT: 11.231 min Scan# 1530
 Delta R.T. -0.000 min
 Lab File: VW025020.D
 Acq: 08 Nov 2022 10:38

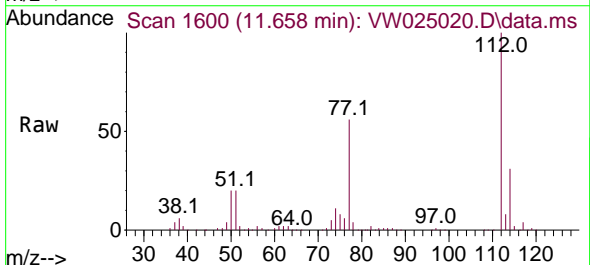
Instrument : MSVOA_W
 ClientSampleId :



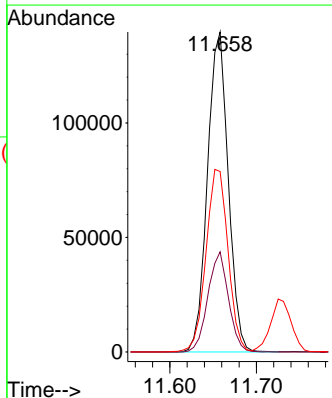
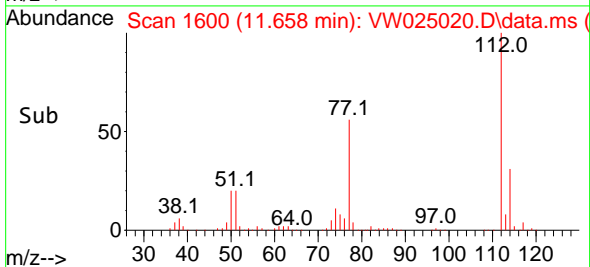
Tgt Ion:107 Resp: 56142
 Ion Ratio Lower Upper
 107 100
 109 95.3 64.5 119.7
 188 3.0 2.9 4.3

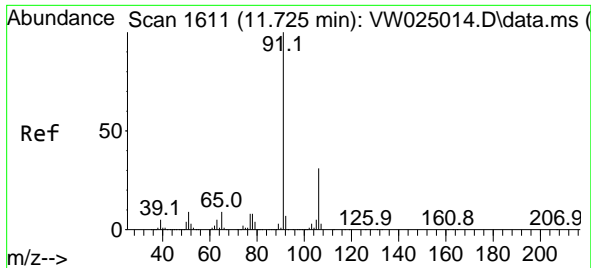


#51
 Chlorobenzene
 Concen: 26.679 ug/L
 RT: 11.658 min Scan# 1600
 Delta R.T. -0.000 min
 Lab File: VW025020.D
 Acq: 08 Nov 2022 10:38



Tgt Ion:112 Resp: 232916
 Ion Ratio Lower Upper
 112 100
 114 31.3 20.8 38.6
 77 56.4 48.2 72.2

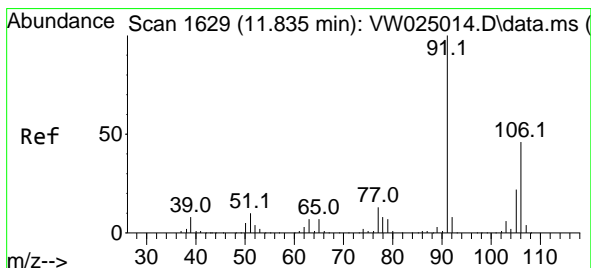
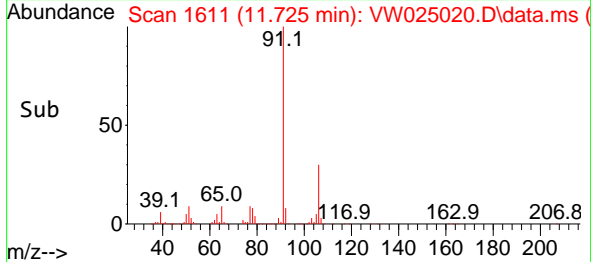
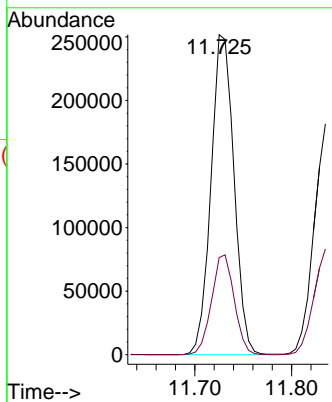
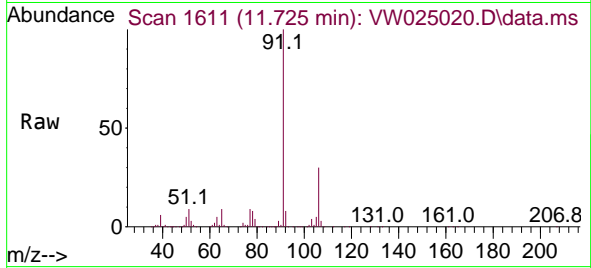




#52
 Ethylbenzene
 Concen: 26.767 ug/L
 RT: 11.725 min Scan# 1611
 Delta R.T. -0.000 min
 Lab File: VW025020.D
 Acq: 08 Nov 2022 10:38

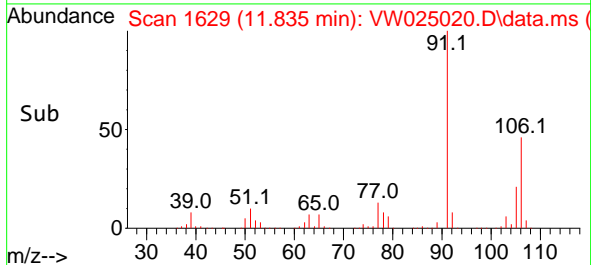
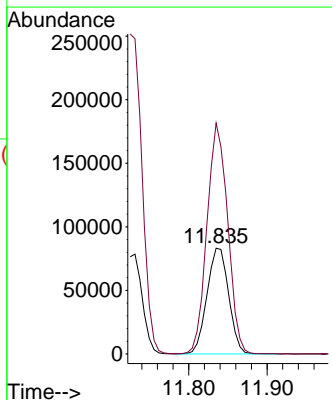
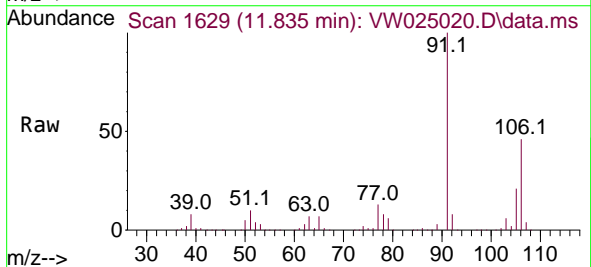
Instrument : MSVOA_W
 ClientSampleId :

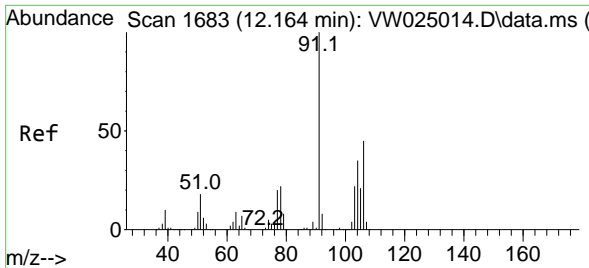
Tgt Ion: 91 Resp: 416148
 Ion Ratio Lower Upper
 91 100
 106 30.4 22.3 41.5



#53
 m,p-Xylene
 Concen: 26.567 ug/L
 RT: 11.835 min Scan# 1629
 Delta R.T. -0.000 min
 Lab File: VW025020.D
 Acq: 08 Nov 2022 10:38

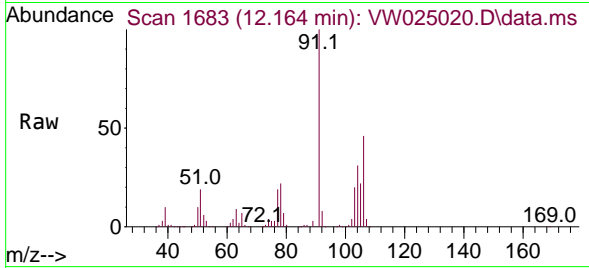
Tgt Ion:106 Resp: 159887
 Ion Ratio Lower Upper
 106 100
 91 218.2 143.9 267.2



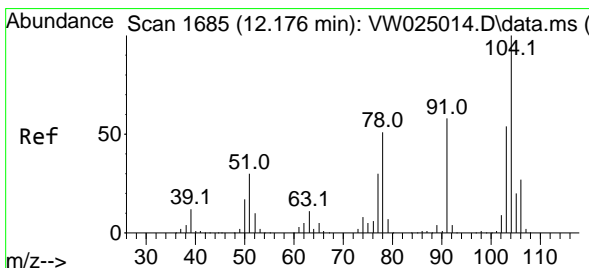
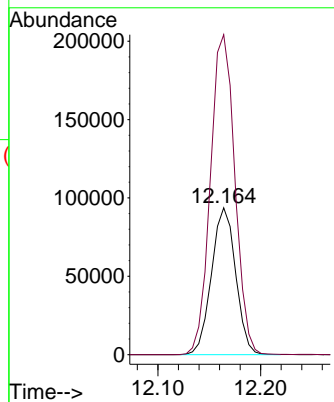
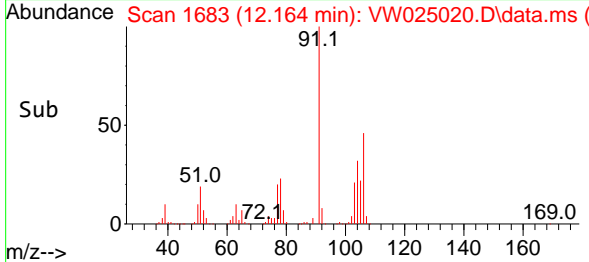


#54
 o-Xylene
 Concen: 26.946 ug/L
 RT: 12.164 min Scan# 1
 Delta R.T. -0.000 min
 Lab File: VW025020.D
 Acq: 08 Nov 2022 10:38

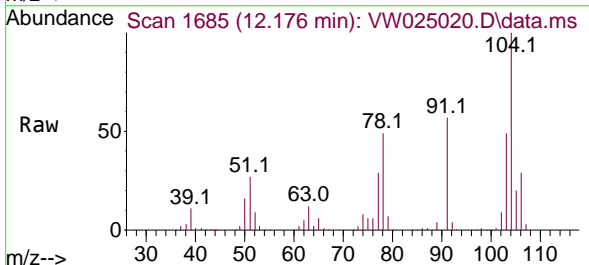
Instrument :
 MSVOA_W
 ClientSampled :



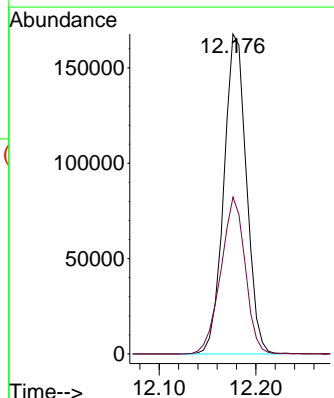
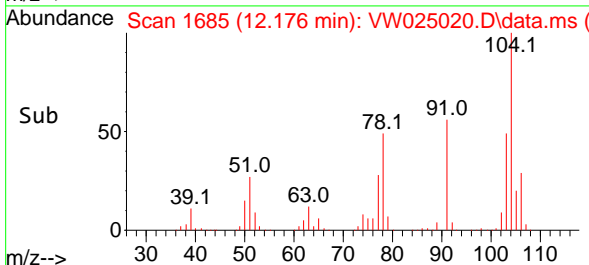
Tgt Ion:106 Resp: 152988
 Ion Ratio Lower Upper
 106 100
 91 218.0 153.5 285.1

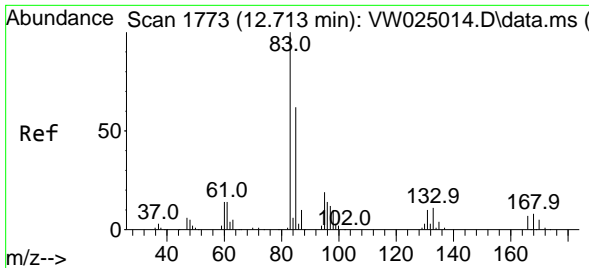


#55
 Styrene
 Concen: 27.534 ug/L
 RT: 12.176 min Scan# 1685
 Delta R.T. -0.000 min
 Lab File: VW025020.D
 Acq: 08 Nov 2022 10:38



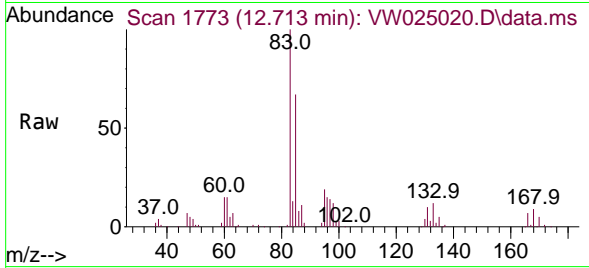
Tgt Ion:104 Resp: 271518
 Ion Ratio Lower Upper
 104 100
 78 49.0 31.3 58.1



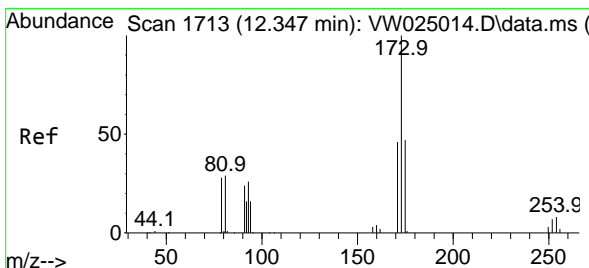
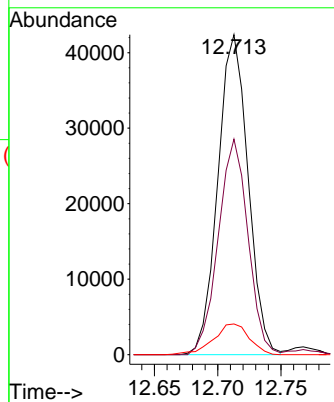
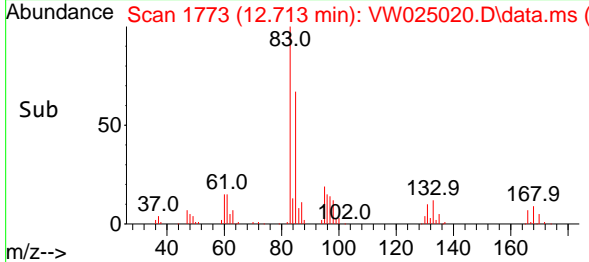


#57
 1,1,2,2-Tetrachloroethane
 Concen: 25.216 ug/L
 RT: 12.713 min Scan# 1773
 Delta R.T. -0.000 min
 Lab File: VW025020.D
 Acq: 08 Nov 2022 10:38

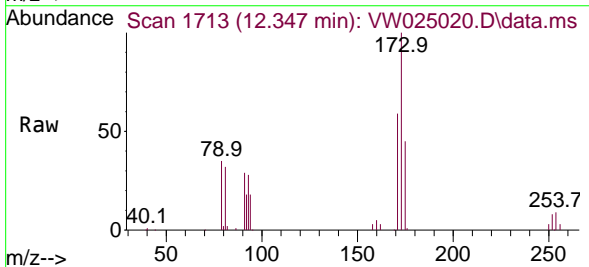
Instrument : MSVOA_W
 ClientSampleId :



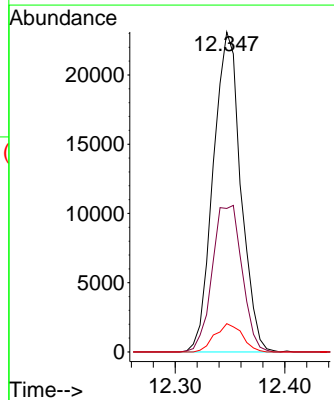
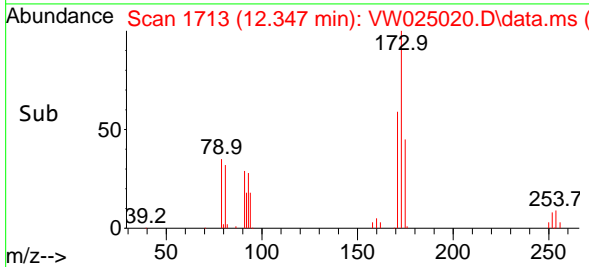
Tgt Ion: 83 Resp: 70329
 Ion Ratio Lower Upper
 83 100
 85 67.3 46.4 86.2
 131 9.6 8.2 12.4

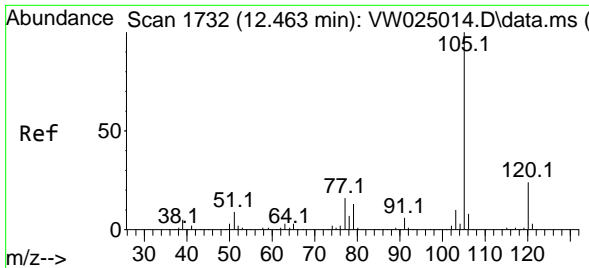


#59
 Bromoform
 Concen: 24.560 ug/L
 RT: 12.347 min Scan# 1713
 Delta R.T. -0.000 min
 Lab File: VW025020.D
 Acq: 08 Nov 2022 10:38



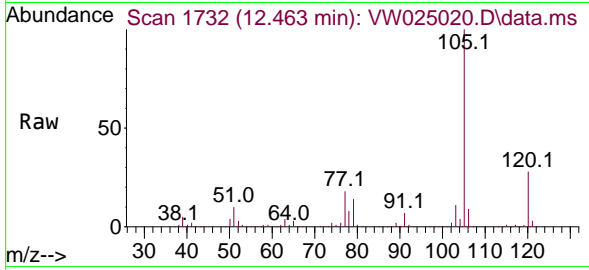
Tgt Ion: 173 Resp: 40435
 Ion Ratio Lower Upper
 173 100
 175 49.4 37.4 56.2
 254 8.8 5.8 8.8#





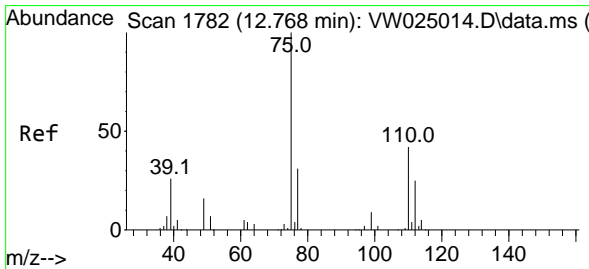
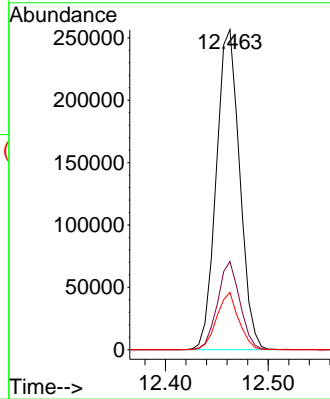
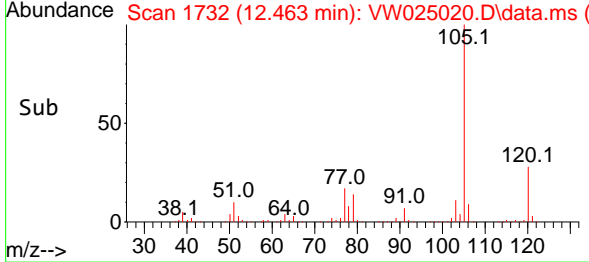
#60
 Isopropylbenzene
 Concen: 23.171 ug/L
 RT: 12.463 min Scan# 1732
 Delta R.T. -0.000 min
 Lab File: VW025020.D
 Acq: 08 Nov 2022 10:38

Instrument :
 MSVOA_W
 ClientSampleId :

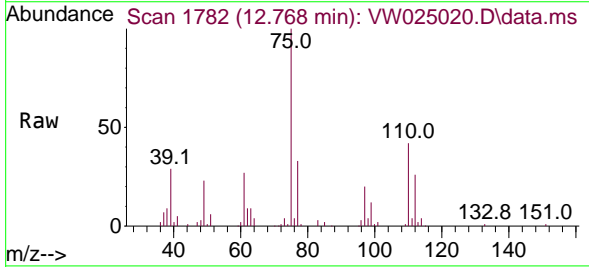


Tgt Ion:105 Resp: 405513

Ion	Ratio	Lower	Upper
105	100		
120	26.3	20.8	31.2
77	16.8	13.0	19.4

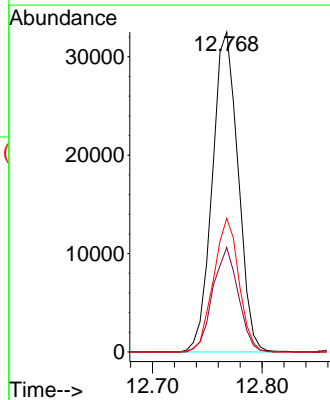
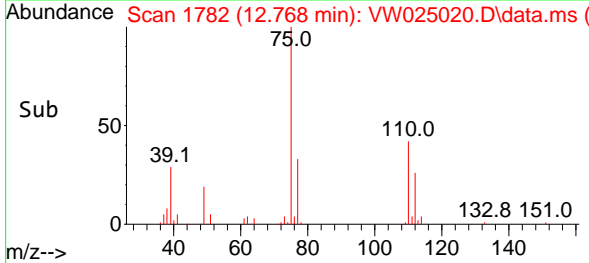


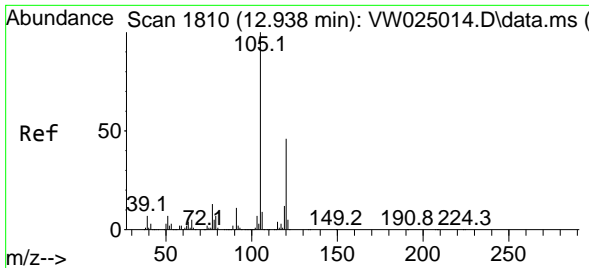
#61
 1,2,3-Trichloropropane
 Concen: 22.760 ug/L
 RT: 12.768 min Scan# 1782
 Delta R.T. -0.000 min
 Lab File: VW025020.D
 Acq: 08 Nov 2022 10:38



Tgt Ion: 75 Resp: 53228

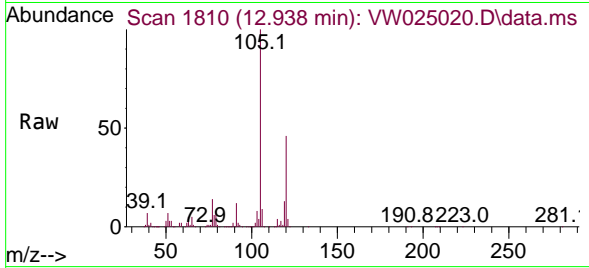
Ion	Ratio	Lower	Upper
75	100		
77	32.3	25.7	38.5
110	40.9	31.7	47.5



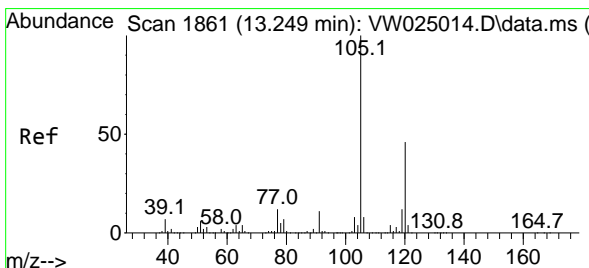
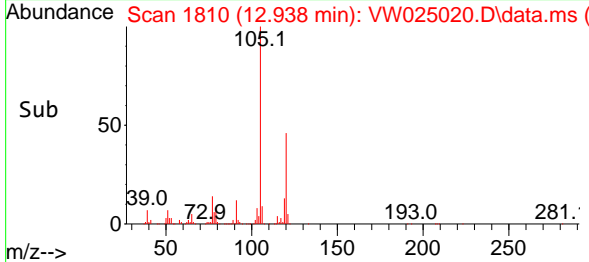
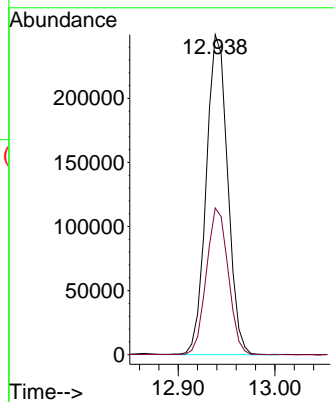


#62
 1,3,5-Trimethylbenzene
 Concen: 25.315 ug/L
 RT: 12.938 min Scan# 1810
 Delta R.T. -0.000 min
 Lab File: VW025020.D
 Acq: 08 Nov 2022 10:38

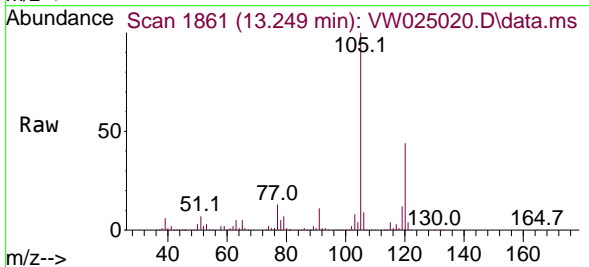
Instrument :
 MSVOA_W
 ClientSampleId :



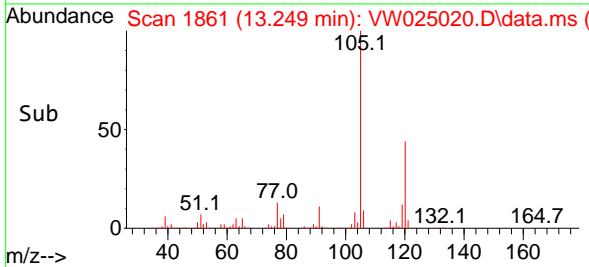
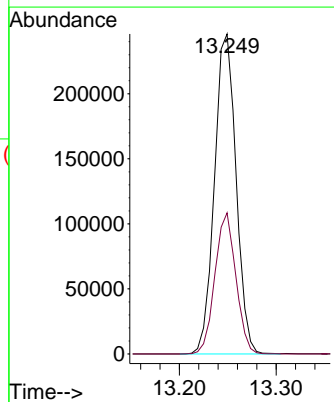
Tgt Ion:105 Resp: 384580
 Ion Ratio Lower Upper
 105 100
 120 46.8 37.6 56.4

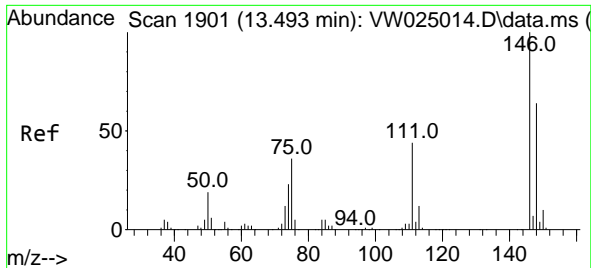


#63
 1,2,4-Trimethylbenzene
 Concen: 25.583 ug/L
 RT: 13.249 min Scan# 1861
 Delta R.T. -0.000 min
 Lab File: VW025020.D
 Acq: 08 Nov 2022 10:38



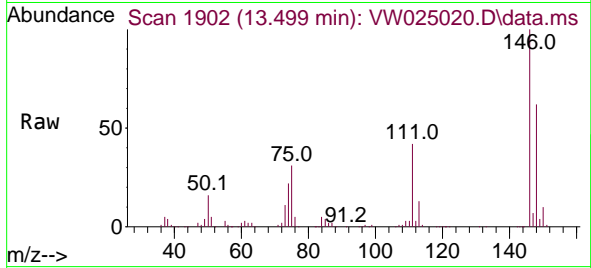
Tgt Ion:105 Resp: 381113
 Ion Ratio Lower Upper
 105 100
 120 42.8 35.7 53.5



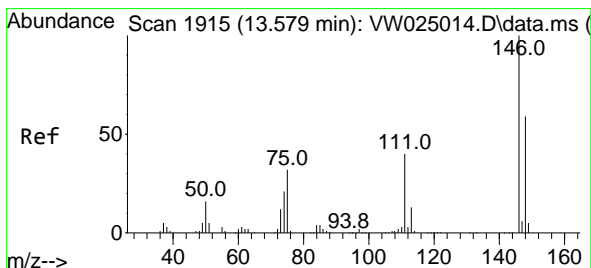
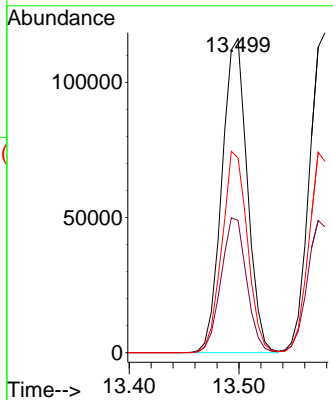
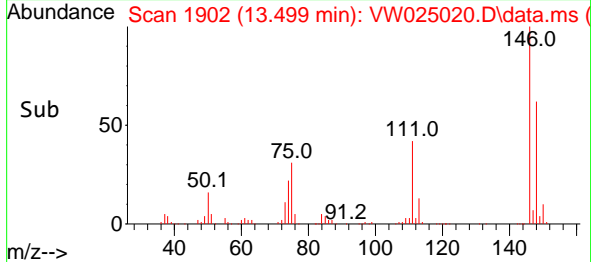


#64
 1,3-Dichlorobenzene
 Concen: 25.625 ug/L
 RT: 13.499 min Scan# 1902
 Delta R.T. 0.006 min
 Lab File: VW025020.D
 Acq: 08 Nov 2022 10:38

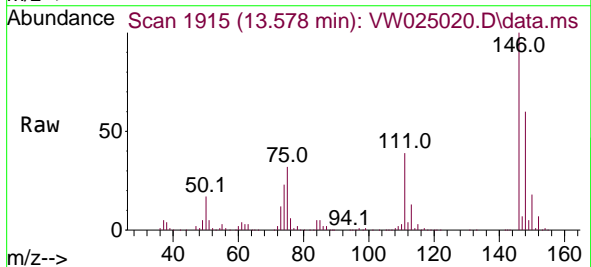
Instrument :
 MSVOA_W
 ClientSampleId :



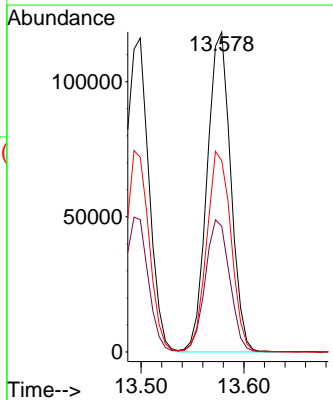
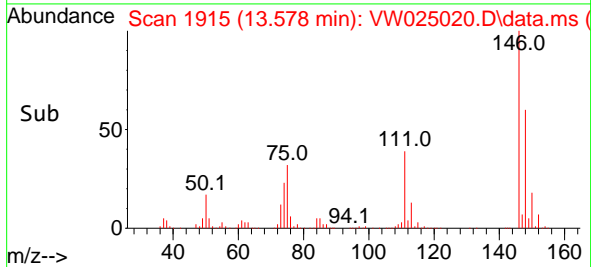
Tgt Ion:146 Resp: 187040
 Ion Ratio Lower Upper
 146 100
 111 42.1 31.1 57.7
 148 62.0 47.2 87.6

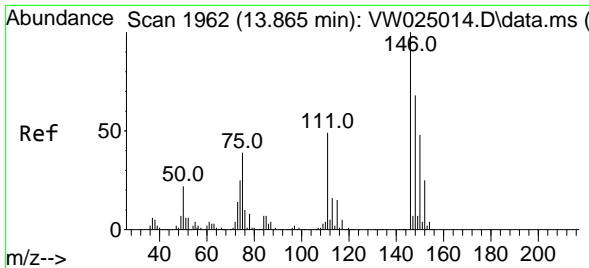


#65
 1,4-Dichlorobenzene
 Concen: 26.022 ug/L
 RT: 13.578 min Scan# 1915
 Delta R.T. -0.000 min
 Lab File: VW025020.D
 Acq: 08 Nov 2022 10:38



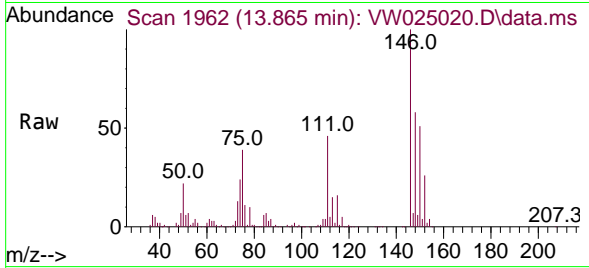
Tgt Ion:146 Resp: 189523
 Ion Ratio Lower Upper
 146 100
 111 39.3 28.8 53.6
 148 59.7 44.7 82.9



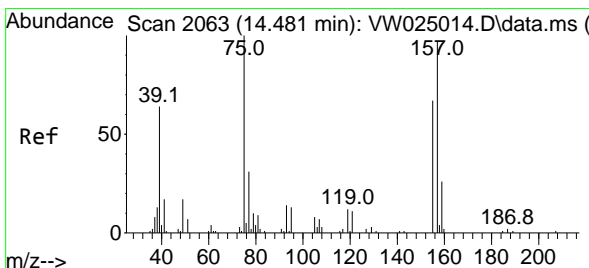
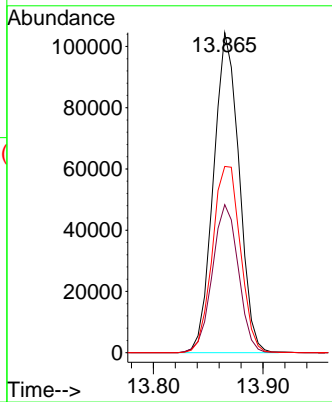
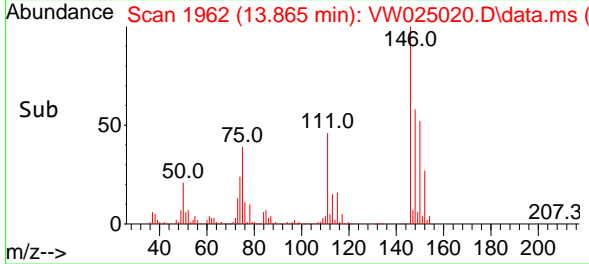


#67
 1,2-Dichlorobenzene
 Concen: 25.830 ug/L
 RT: 13.865 min Scan# 1962
 Delta R.T. -0.000 min
 Lab File: VW025020.D
 Acq: 08 Nov 2022 10:38

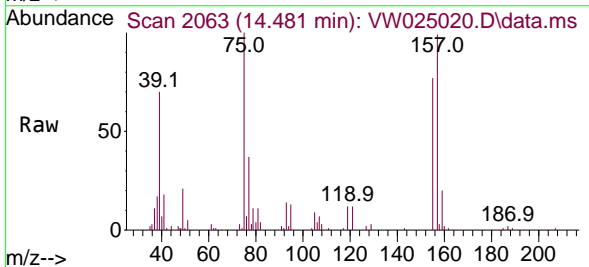
Instrument : MSVOA_W
 ClientSampleId :



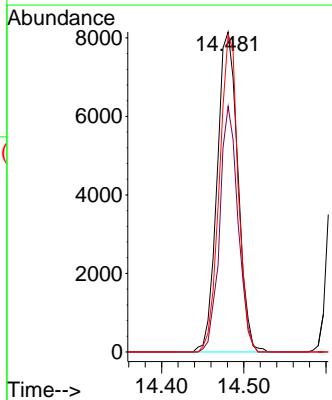
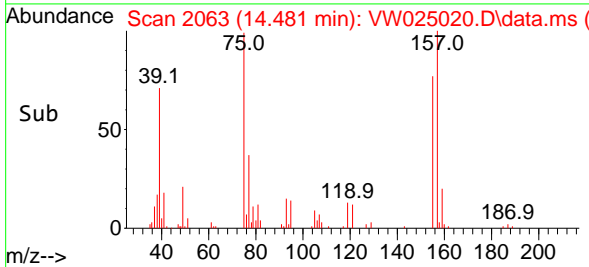
Tgt Ion:146 Resp: 169515
 Ion Ratio Lower Upper
 146 100
 111 46.3 34.2 51.4
 148 58.2 47.1 70.7

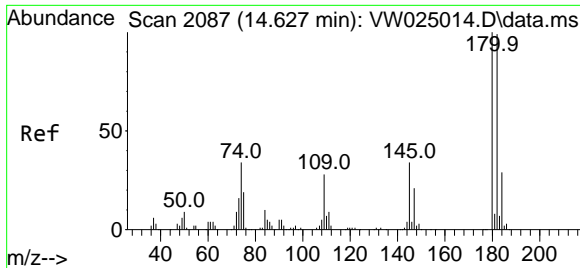


#68
 1,2-Dibromo-3-chloropropane
 Concen: 26.403 ug/L
 RT: 14.481 min Scan# 2063
 Delta R.T. -0.000 min
 Lab File: VW025020.D
 Acq: 08 Nov 2022 10:38



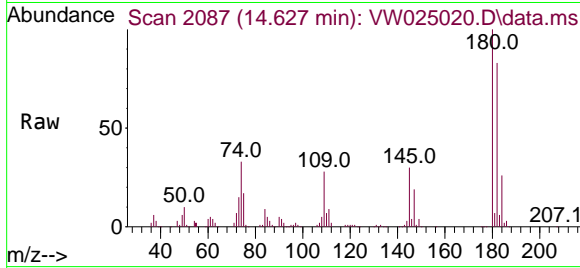
Tgt Ion: 75 Resp: 14269
 Ion Ratio Lower Upper
 75 100
 155 76.8 61.2 91.8
 157 99.2 72.4 108.6



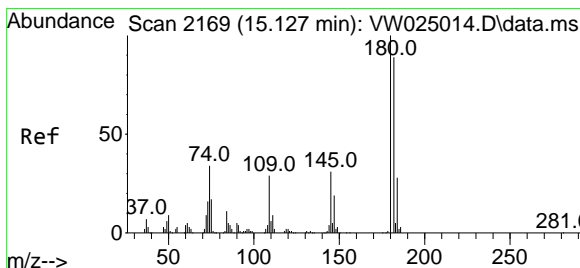
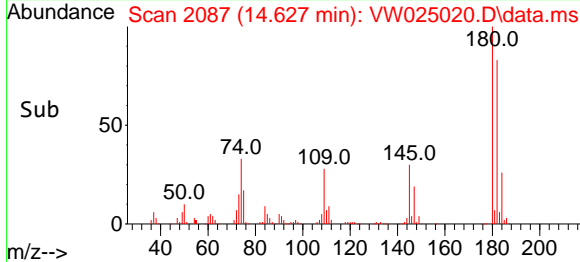
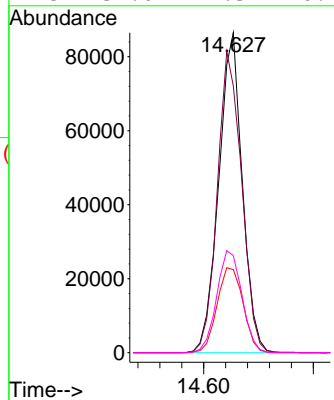


#69
 1,3,5-Trichlorobenzene
 Concen: 26.738 ug/L
 RT: 14.627 min Scan# 2087
 Delta R.T. -0.000 min
 Lab File: VW025020.D
 Acq: 08 Nov 2022 10:38

Instrument :
 MSVOA_W
 ClientSampleId :

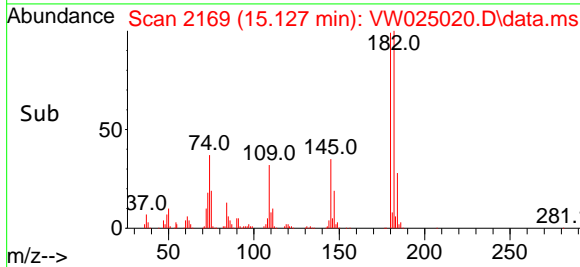
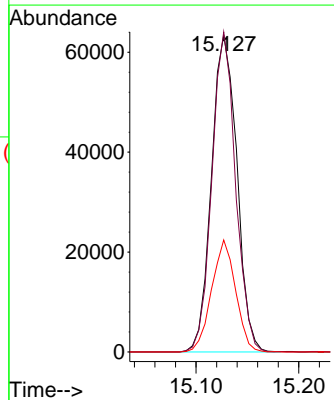
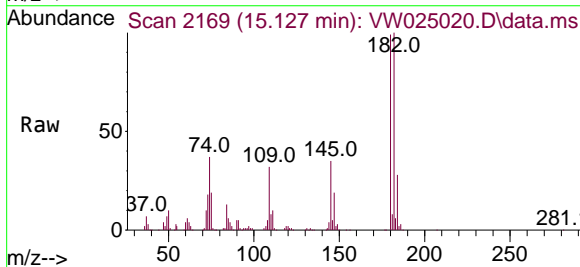


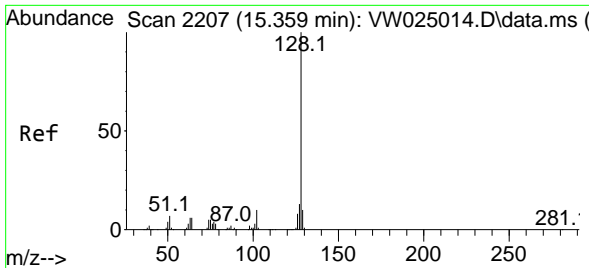
Tgt Ion:180 Resp: 129263
 Ion Ratio Lower Upper
 180 100
 182 96.7 75.7 113.5
 184 29.4 23.4 35.2
 145 34.0 27.3 40.9



#70
 1,2,4-trichlorobenzene
 Concen: 28.946 ug/L
 RT: 15.127 min Scan# 2169
 Delta R.T. -0.000 min
 Lab File: VW025020.D
 Acq: 08 Nov 2022 10:38

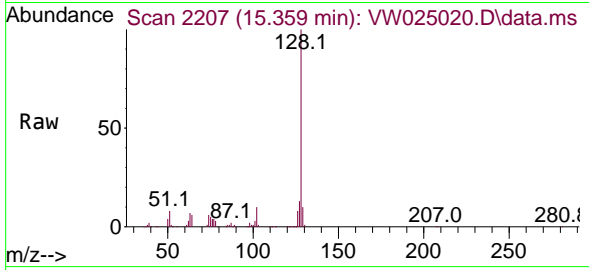
Tgt Ion:180 Resp: 108766
 Ion Ratio Lower Upper
 180 100
 182 94.1 74.9 112.3
 145 33.4 27.0 40.4



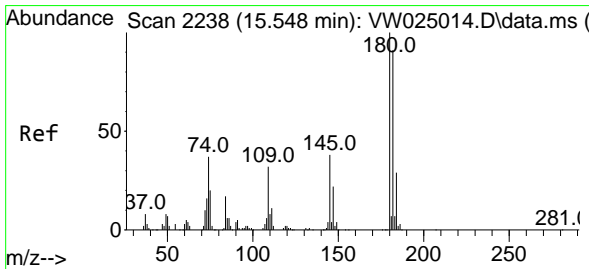
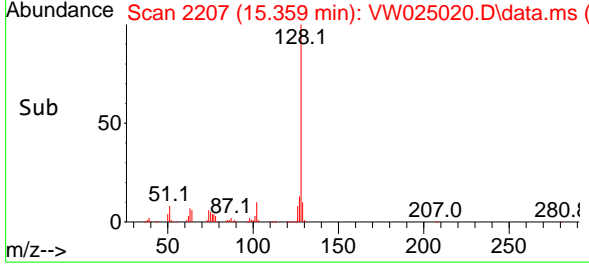
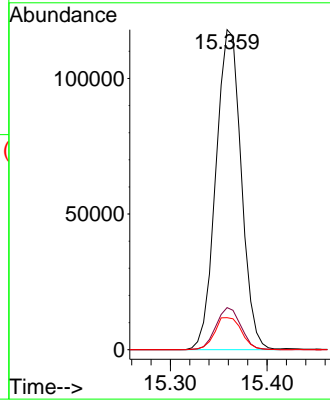


#71
 Naphthalene
 Concen: 27.081 ug/L
 RT: 15.359 min Scan# 21
 Delta R.T. -0.000 min
 Lab File: VW025020.D
 Acq: 08 Nov 2022 10:38

Instrument :
 MSVOA_W
 ClientSampleId :



Tgt Ion:128 Resp: 214661
 Ion Ratio Lower Upper
 128 100
 127 13.0 10.4 15.6
 129 10.6 8.6 13.0



#72
 1,2,3-Trichlorobenzene
 Concen: 27.753 ug/L
 RT: 15.548 min Scan# 2238
 Delta R.T. -0.000 min
 Lab File: VW025020.D
 Acq: 08 Nov 2022 10:38

Tgt Ion:180 Resp: 90866
 Ion Ratio Lower Upper
 180 100
 182 96.1 74.1 111.1
 145 36.7 28.2 42.2

