

Data Path : Z:\voasrv\HPCHEM1\MSVOA_W\Data\VW110824\
 Data File : VW030972.D
 Acq On : 08 Nov 2024 16:03
 Operator : SY/MD
 Sample : P4724-15
 Misc : 6.00g/10mL/MSVOA_W/SOIL/A
 ALS Vial : 15 Sample Multiplier: 1

Instrument :
 MSVOA_W
 ClientSampleId :

Quant Time: Nov 08 22:07:34 2024
 Quant Method : Z:\voasrv\HPCHEM1\MSVOA_W\Method\SFAMWLM110424SMA.M
 Quant Title : SFAM01.0
 QLast Update : Fri Nov 08 22:04:34 2024
 Response via : Initial Calibration

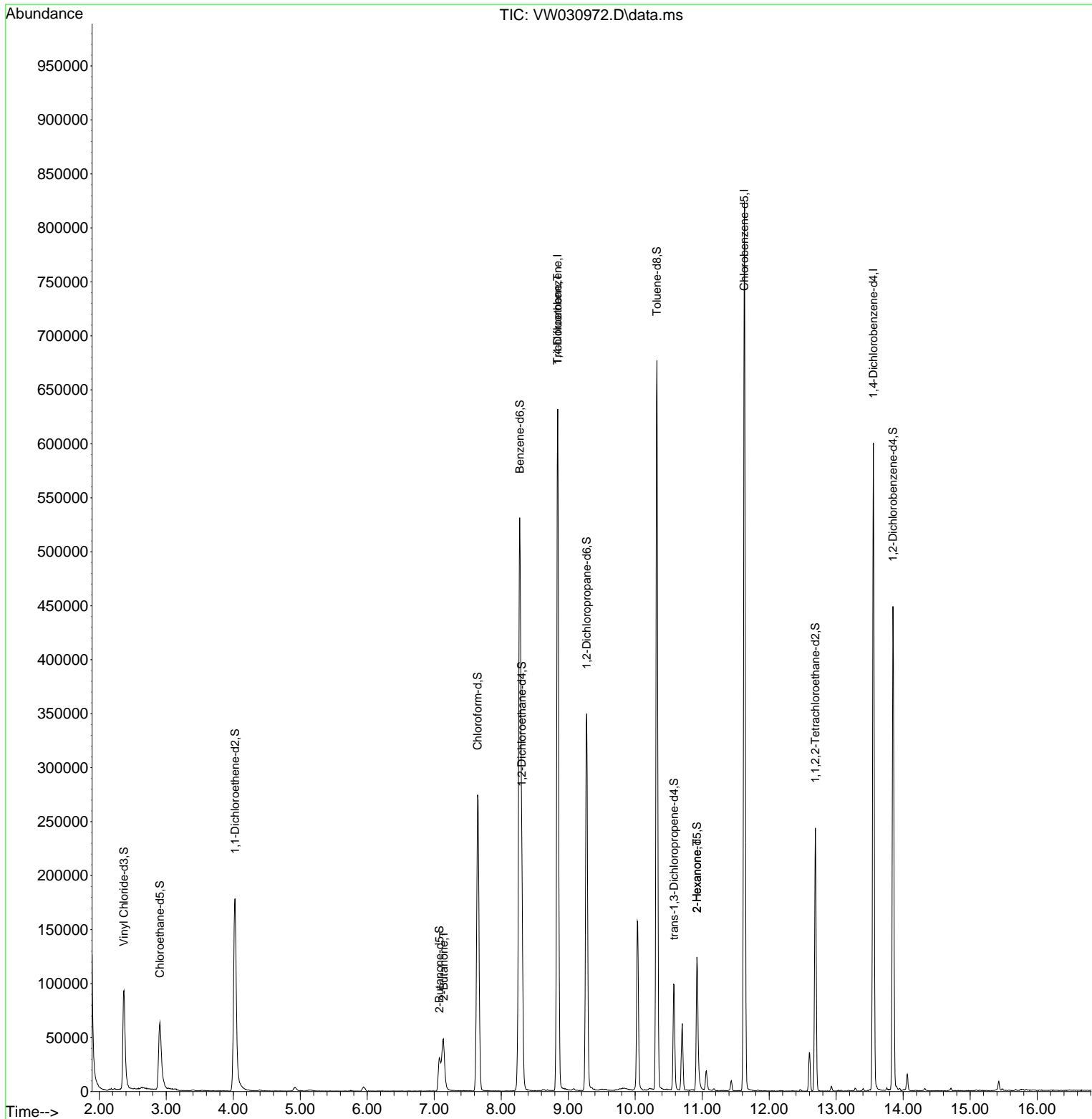
Compound	R.T.	QIon	Response	Conc	Units	Dev(Min)
Internal Standards						
1) 1,4-Difluorobenzene	8.843	114	534637	25.000	ug/L	0.00
28) Chlorobenzene-d5	11.629	117	456893	25.000	ug/L	0.00
58) 1,4-Dichlorobenzene-d4	13.556	152	165069	25.000	ug/L	0.00
System Monitoring Compounds						
4) Vinyl Chloride-d3	2.369	65	136495	15.566	ug/L	0.00
Spiked Amount	25.000	Range 30 - 150	Recovery =	62.280%		
7) Chloroethane-d5	2.905	69	105947	15.754	ug/L	0.00
Spiked Amount	25.000	Range 30 - 150	Recovery =	63.000%		
11) 1,1-Dichloroethene-d2	4.027	65	60075	16.604	ug/L	0.00
Spiked Amount	25.000	Range 45 - 110	Recovery =	66.400%		
21) 2-Butanone-d5	7.075	46	52966	36.706	ug/L	0.00
Spiked Amount	50.000	Range 20 - 135	Recovery =	73.420%		
24) Chloroform-d	7.648	84	288496	18.304	ug/L	0.00
Spiked Amount	25.000	Range 40 - 150	Recovery =	73.200%		
26) 1,2-Dichloroethane-d4	8.307	65	143821	18.353	ug/L	0.00
Spiked Amount	25.000	Range 70 - 130	Recovery =	73.400%		
32) Benzene-d6	8.276	84	548892	19.338	ug/L	0.00
Spiked Amount	25.000	Range 20 - 135	Recovery =	77.360%		
36) 1,2-Dichloropropane-d6	9.276	67	172019	20.558	ug/L	0.00
Spiked Amount	25.000	Range 70 - 120	Recovery =	82.240%		
41) Toluene-d8	10.325	98	456819	17.943	ug/L	0.00
Spiked Amount	25.000	Range 30 - 130	Recovery =	71.760%		
43) trans-1,3-Dichloroprop...	10.581	79	58822	17.343	ug/L	0.00
Spiked Amount	25.000	Range 30 - 135	Recovery =	69.360%		
47) 2-Hexanone-d5	10.922	63	41290	38.075	ug/L	0.00
Spiked Amount	50.000	Range 20 - 135	Recovery =	76.160%		
56) 1,1,2,2-Tetrachloroeth...	12.690	84	123575	21.197	ug/L	0.00
Spiked Amount	25.000	Range 45 - 120	Recovery =	84.800%		
66) 1,2-Dichlorobenzene-d4	13.848	152	122542	20.380	ug/L	0.00
Spiked Amount	25.000	Range 75 - 120	Recovery =	81.520%		
Target Compounds						
22) 2-Butanone	7.142	43	7688	3.895	ug/L #	50
34) Trichloroethene	8.843	95	16128	1.986	ug/L #	4
48) 2-Hexanone	10.922	43	4535	1.771	ug/L #	81

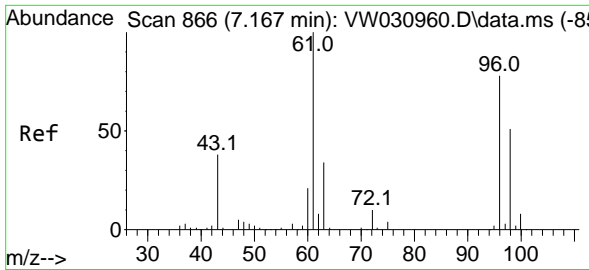
(#) = qualifier out of range (m) = manual integration (+) = signals summed

Data Path : Z:\voasrv\HPCHEM1\MSVOA_W\Data\VW110824\
 Data File : VW030972.D
 Acq On : 08 Nov 2024 16:03
 Operator : SY/MD
 Sample : P4724-15
 Misc : 6.00g/10mL/MSVOA_W/SOIL/A
 ALS Vial : 15 Sample Multiplier: 1

Instrument :
 MSVOA_W
 ClientSampleId :

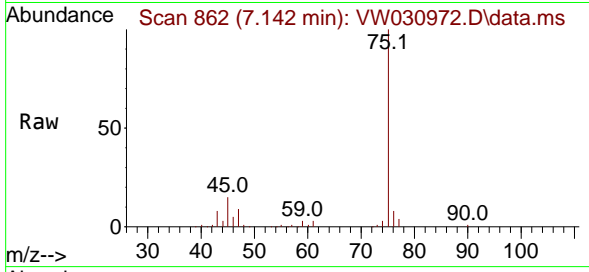
Quant Time: Nov 08 22:07:34 2024
 Quant Method : Z:\voasrv\HPCHEM1\MSVOA_W\Method\SFAMWLM110424SMA.M
 Quant Title : SFAM01.0
 QLast Update : Fri Nov 08 22:04:34 2024
 Response via : Initial Calibration



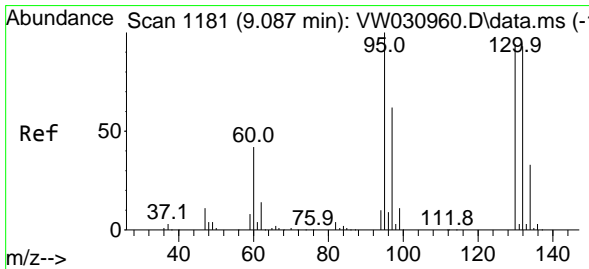
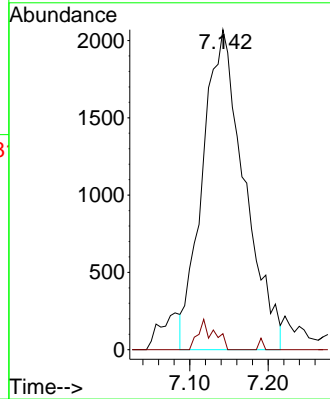
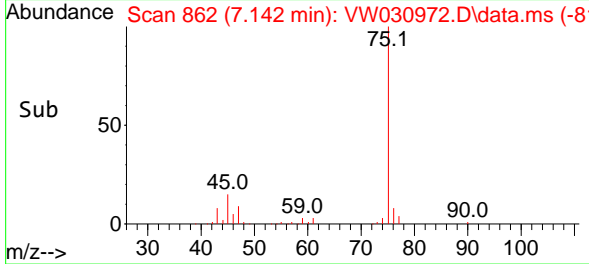


#22
 2-Butanone
 Concen: 3.895 ug/L
 RT: 7.142 min Scan# 862
 Delta R.T. -0.025 min
 Lab File: VW030972.D
 Acq: 08 Nov 2024 16:03

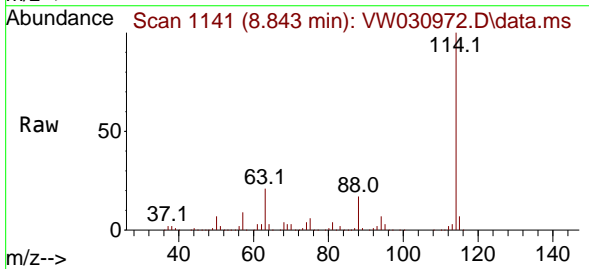
Instrument : MSVOA_W
 ClientSampleId :



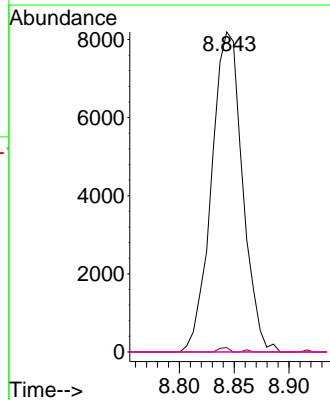
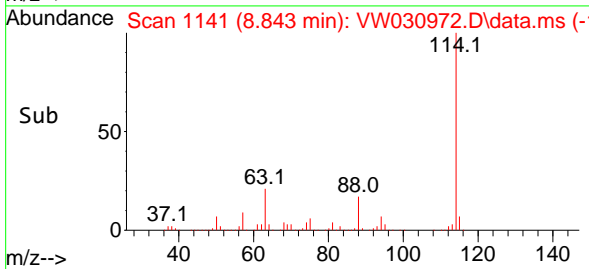
Tgt Ion: 43 Resp: 7688
 Ion Ratio Lower Upper
 43 100
 72 2.2 14.5 43.6#

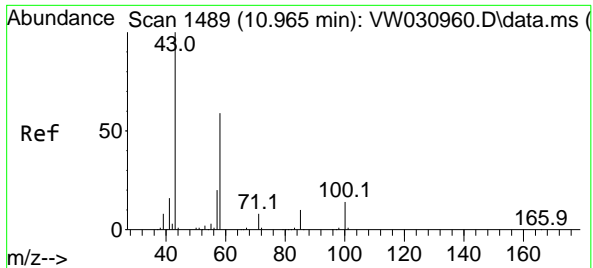


#34
 Trichloroethene
 Concen: 1.986 ug/L
 RT: 8.843 min Scan# 1141
 Delta R.T. -0.244 min
 Lab File: VW030972.D
 Acq: 08 Nov 2024 16:03



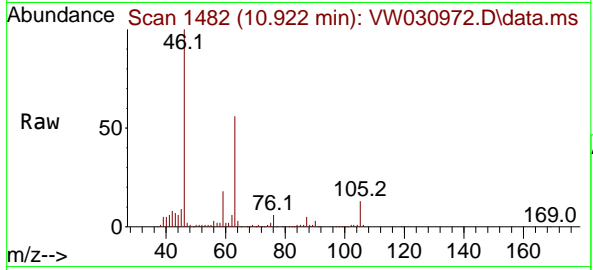
Tgt Ion: 95 Resp: 16128
 Ion Ratio Lower Upper
 95 100
 97 1.4 48.9 90.7#
 132 0.0 67.7 125.7#
 130 0.0 73.1 135.8#





#48
 2-Hexanone
 Concen: 1.771 ug/L
 RT: 10.922 min Scan# 14
 Delta R.T. -0.043 min
 Lab File: VW030972.D
 Acq: 08 Nov 2024 16:03

Instrument : MSVOA_W
 ClientSampleId :



Tgt Ion: 43 Resp: 4535

Ion	Ratio	Lower	Upper
43	100		
58	47.5	43.8	65.8
57	37.6	15.4	23.2#
100	4.3	10.2	15.2#

