

Data Path : Z:\voasrv\HPCHEM1\MSVOA\_W\Data\VW111224\  
 Data File : VW031002.D  
 Acq On : 12 Nov 2024 18:02  
 Operator : SY/MD  
 Sample : P4751-23  
 Misc : 6.08g/10mL/MSVOA\_W/SOIL/A  
 ALS Vial : 14 Sample Multiplier: 1

Instrument :  
 MSVOA\_W  
 ClientSampleId :  
 BH9G4

Manual Integrations  
 APPROVED

Reviewed By :Mahesh Dadoda 11/13/2024  
 Supervised By :Semsettin Yesilyurt 11/13/2024

Quant Time: Nov 13 00:30:36 2024  
 Quant Method : Z:\voasrv\HPCHEM1\MSVOA\_W\Method\SFAMWLM110424SMA.M  
 Quant Title : SFAM01.0  
 QLast Update : Wed Nov 13 00:25:58 2024  
 Response via : Initial Calibration

Compound	R.T.	QIon	Response	Conc	Units	Dev(Min)
Internal Standards						
1) 1,4-Difluorobenzene	8.843	114	343538	25.000	ug/L	0.00
28) Chlorobenzene-d5	11.629	117	275595	25.000	ug/L	0.00
58) 1,4-Dichlorobenzene-d4	13.556	152	86920	25.000	ug/L	0.00
System Monitoring Compounds						
4) Vinyl Chloride-d3	2.363	65	103836	18.429	ug/L	0.00
Spiked Amount	25.000	Range 30 - 150	Recovery	=	73.720%	
7) Chloroethane-d5	2.899	69	87753	20.307	ug/L	0.00
Spiked Amount	25.000	Range 30 - 150	Recovery	=	81.240%	
11) 1,1-Dichloroethene-d2	4.015	65	43025	18.506	ug/L	0.00
Spiked Amount	25.000	Range 45 - 110	Recovery	=	74.040%	
21) 2-Butanone-d5	7.069	46	94692	102.126	ug/L	0.00
Spiked Amount	50.000	Range 20 - 135	Recovery	=	204.260%#	
24) Chloroform-d	7.648	84	273354	26.991	ug/L	0.00
Spiked Amount	25.000	Range 40 - 150	Recovery	=	107.960%	
26) 1,2-Dichloroethane-d4	8.301	65	164336m	32.636	ug/L	0.00
Spiked Amount	25.000	Range 70 - 130	Recovery	=	130.560%#	
32) Benzene-d6	8.276	84	453107	26.465	ug/L	0.00
Spiked Amount	25.000	Range 20 - 135	Recovery	=	105.840%	
36) 1,2-Dichloropropane-d6	9.270	67	166190	32.927	ug/L	0.00
Spiked Amount	25.000	Range 70 - 120	Recovery	=	131.720%#	
41) Toluene-d8	10.319	98	306978	19.989	ug/L	0.00
Spiked Amount	25.000	Range 30 - 130	Recovery	=	79.960%	
43) trans-1,3-Dichloroprop...	10.575	79	63597	31.086	ug/L	0.00
Spiked Amount	25.000	Range 30 - 135	Recovery	=	124.360%	
47) 2-Hexanone-d5	10.922	63	73908	112.988	ug/L	0.00
Spiked Amount	50.000	Range 20 - 135	Recovery	=	225.980%#	
56) 1,1,2,2-Tetrachloroeth...	12.690	84	164943	46.906	ug/L	0.00
Spiked Amount	25.000	Range 45 - 120	Recovery	=	187.640%#	
66) 1,2-Dichlorobenzene-d4	13.848	152	90794	28.676	ug/L	0.00
Spiked Amount	25.000	Range 75 - 120	Recovery	=	114.720%	
Target Compounds						
20) cis-1,2-Dichloroethene	7.173	96	7319	1.416	ug/L	98
34) Trichloroethene	9.087	95	21243	4.337	ug/L	92

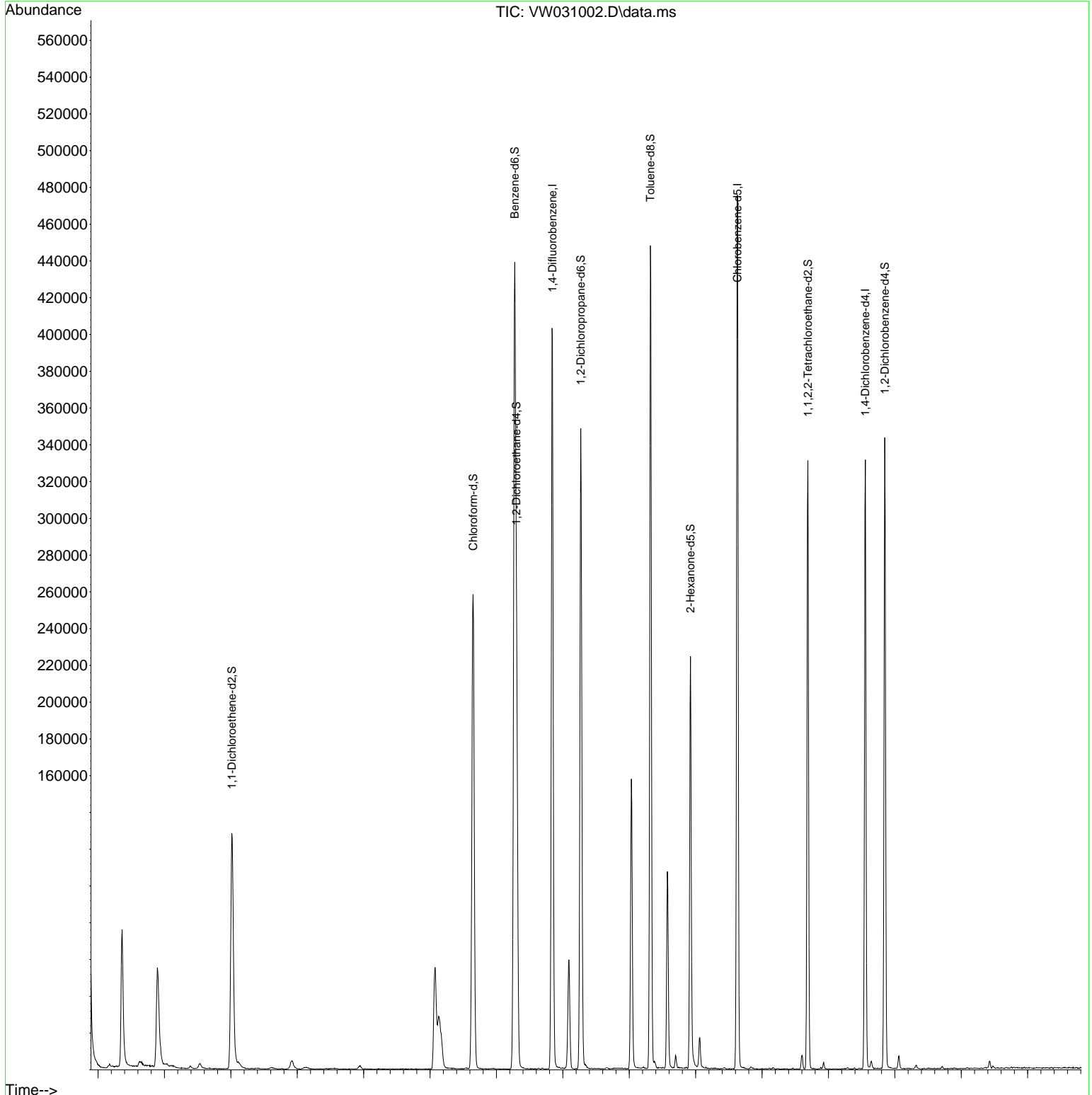
(#) = qualifier out of range (m) = manual integration (+) = signals summed

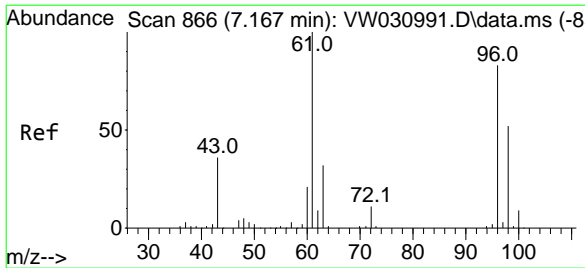
Data Path : Z:\voasrv\HPCHEM1\MSVOA\_W\Data\VW111224\  
 Data File : VW031002.D  
 Acq On : 12 Nov 2024 18:02  
 Operator : SY/MD  
 Sample : P4751-23  
 Misc : 6.08g/10mL/MSVOA\_W/SOIL/A  
 ALS Vial : 14 Sample Multiplier: 1

**Instrument :**  
 MSVOA\_W  
**ClientSampleId :**  
 BH9G4

Quant Time: Nov 13 00:30:36 2024  
 Quant Method : Z:\voasrv\HPCHEM1\MSVOA\_W\Method\SFAMWLM110424SMA.M  
 Quant Title : SFAM01.0  
 QLast Update : Wed Nov 13 00:25:58 2024  
 Response via : Initial Calibration

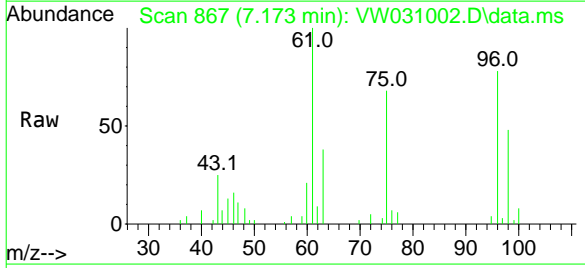
**Manual Integrations**  
**APPROVED**  
 Reviewed By :Mahesh Dadoda 11/13/2024  
 Supervised By :Semsettin Yesilyurt 11/13/2024





#20  
 cis-1,2-Dichloroethene  
 Concen: 1.416 ug/L  
 RT: 7.173 min Scan# 866  
 Delta R.T. 0.006 min  
 Lab File: VW031002.D  
 Acq: 12 Nov 2024 18:02

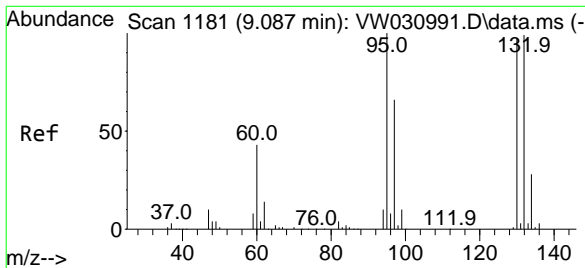
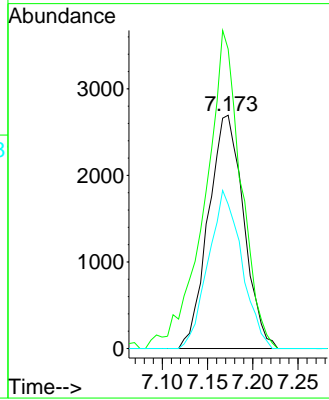
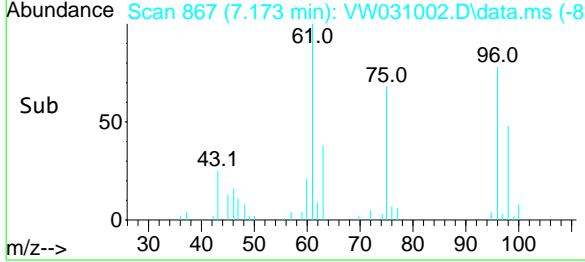
Instrument :  
 MSVOA\_W  
 ClientSampleId :  
 BH9G4



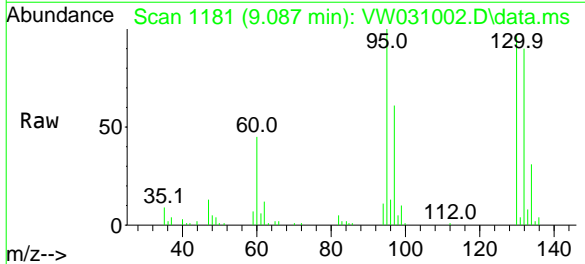
Tgt Ion: 96 Resp: 7319  
 Ion Ratio Lower Upper  
 96 100  
 61 128.3 89.2 165.8  
 98 61.8 45.1 83.9

Manual Integrations  
**APPROVED**

Reviewed By :Mahesh Dadoda 11/13/2024  
 Supervised By :Semsettin Yesilyurt 11/13/2024



#34  
 Trichloroethene  
 Concen: 4.337 ug/L  
 RT: 9.087 min Scan# 1181  
 Delta R.T. -0.000 min  
 Lab File: VW031002.D  
 Acq: 12 Nov 2024 18:02



Tgt Ion: 95 Resp: 21243  
 Ion Ratio Lower Upper  
 95 100  
 97 60.9 48.9 90.7  
 132 89.5 67.7 125.7  
 130 96.7 73.1 135.8

