

Data File : VW006894.D
 Acq On : 15 Nov 2018 12:56
 Operator : SY/AP
 Sample : J5944-08
 Misc : 6.17G/10ML/MSVOA_W/SOIL
 ALS Vial : 1 Sample Multiplier: 1

Instrument :
 MSVOA_W
 ClientSampled :
 ETHO

Quant Time: Nov 16 04:52:35 2018
 Quant Method : Z:\VOASRV\HPCHEM1\MSVOA_W\METHOD\SOM2WLM111418S.M
 Quant Title : VOC Analysis
 QLast Update : Fri Nov 16 04:49:42 2018
 Response via : Initial Calibration

Internal Standards	R.T.	QIon	Response	Conc	Units	Dev(Min)
1) 1,4-Difluorobenzene	8.85	114	193054	25.00	ug/L	0.00
28) Chlorobenzene-d5	11.63	117	184963	25.00	ug/L	0.00
60) 1,4-Dichlorobenzene-d4	13.57	152	88202	25.00	ug/L	0.00

System Monitoring Compounds

4) Vinyl Chloride-d3	2.35	65	42224	24.63	ug/L	0.00
Spiked Amount	25.000	Range	30 - 150	Recovery	=	98.52%
7) Chloroethane-d5	2.89	69	31151	25.01	ug/L	0.00
Spiked Amount	25.000	Range	30 - 150	Recovery	=	100.04%
10) 1,1-Dichloroethene-d2	4.02	63	81403	17.78	ug/L	0.00
Spiked Amount	25.000	Range	45 - 110	Recovery	=	71.12%
20) 2-Butanone-d5	7.09	46	22230	23.53	ug/L	0.00
Spiked Amount	50.000	Range	20 - 135	Recovery	=	47.06%
24) Chloroform-d	7.65	84	98240	22.99	ug/L	0.00
Spiked Amount	25.000	Range	40 - 150	Recovery	=	91.96%
26) 1,2-Dichloroethane-d4	8.31	65	53462	22.16	ug/L	0.00
Spiked Amount	25.000	Range	70 - 130	Recovery	=	88.64%
29) Benzene-d6	8.28	84	211930	21.92	ug/L	0.00
Spiked Amount	25.000	Range	20 - 135	Recovery	=	87.68%
33) 1,2-Dichloropropane-d6	9.28	67	62694	21.18	ug/L	0.00
Spiked Amount	25.000	Range	70 - 120	Recovery	=	84.72%
37) Toluene-d8	10.33	98	222229	22.44	ug/L	0.00
Spiked Amount	25.000	Range	30 - 130	Recovery	=	89.76%
38) trans-1,3-Dichloropropene-	10.58	79	24845	19.54	ug/L	0.00
Spiked Amount	25.000	Range	30 - 135	Recovery	=	78.16%
39) 2-Hexanone-d5	10.93	63	17585	23.85	ug/L	0.00
Spiked Amount	50.000	Range	20 - 135	Recovery	=	47.70%
48) 1,1,2,2-Tetrachloroethane-	12.69	84	41284	16.12	ug/L	0.00
Spiked Amount	25.000	Range	45 - 120	Recovery	=	64.48%
61) 1,2-Dichlorobenzene-d4	13.86	152	73298	21.94	ug/L	0.00
Spiked Amount	25.000	Range	75 - 120	Recovery	=	87.76%

Target Compounds

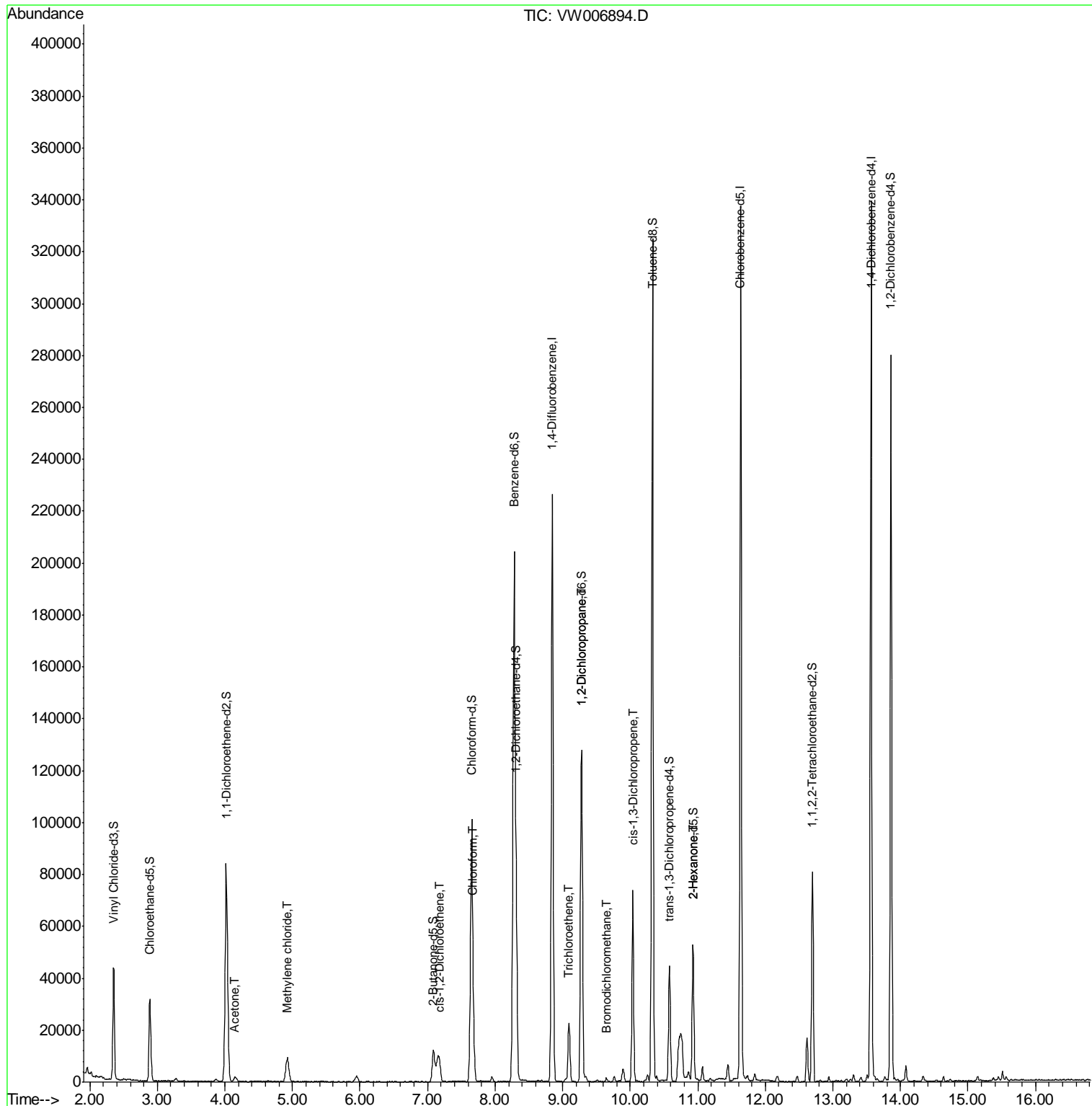
						Qvalue
13) Acetone	4.15	43	1587	2.608	ug/L	93
16) Methylene chloride	4.92	84	7756	2.298	ug/L	90
22) cis-1,2-Dichloroethene	7.17	96	2625	1.021	ug/L	82
25) Chloroform	7.68	83	10543	2.218	ug/L	87
35) Trichloroethene	9.09	95	8060	2.861	ug/L	98
40) 1,2-Dichloropropane	9.28	63	6551	2.571	ug/L #	88
41) Bromodichloromethane	9.65	83	1054	0.337	ug/L #	79
42) cis-1,3-Dichloropropene	10.04	75	1733	0.450	ug/L	88
49) 2-Hexanone	10.93	43	2258	1.527	ug/L #	64

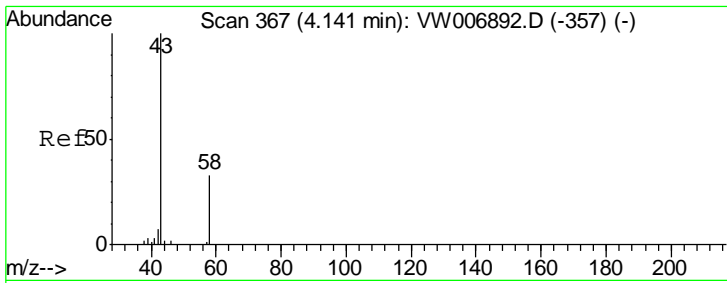
(#) = qualifier out of range (m) = manual integration (+) = signals summed

Data File : VW006894.D
Acq On : 15 Nov 2018 12:56
Operator : SY/AP
Sample : J5944-08
Misc : 6.17G/10ML/MSVOA_W/SOIL
ALS Vial : 1 Sample Multiplier: 1

Instrument :
MSVOA_W
Client Sampled :
ETHTO

Quant Time: Nov 16 04:52:35 2018
Quant Method : Z:\VOASRV\HPCHEM1\MSVOA_W\METHOD\SOM2WLM111418S.M
Quant Title : VOC Analysis
QLast Update : Fri Nov 16 04:49:42 2018
Response via : Initial Calibration

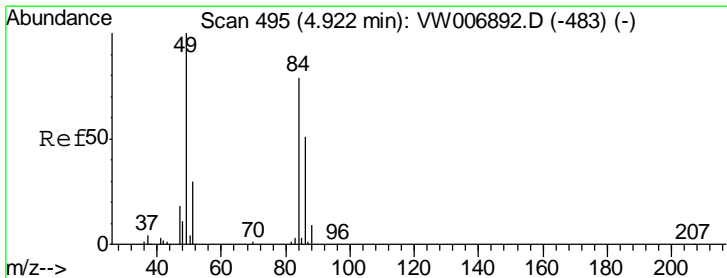
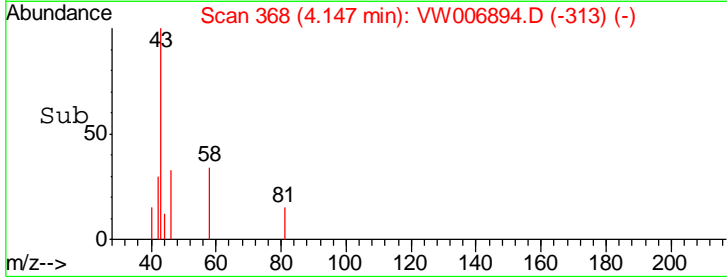
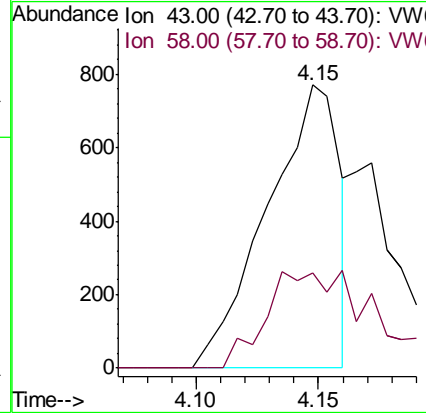
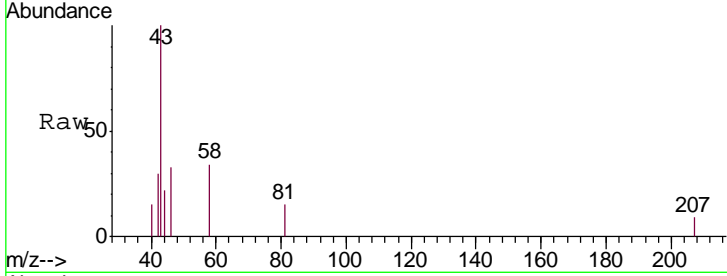




#13
 Acetone
 Concen: 2.608 ug/L
 RT: 4.15 min Scan# 368
 Delta R.T. 0.01 min
 Lab File: VW006894.D
 Acq: 15 Nov 2018 12:56

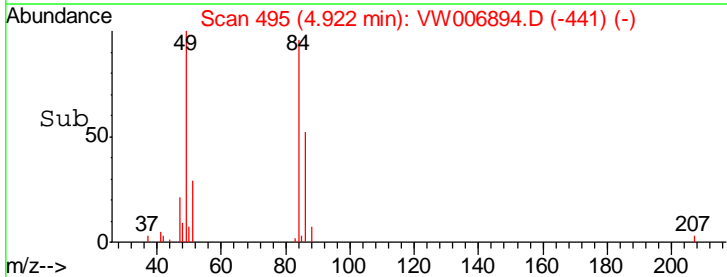
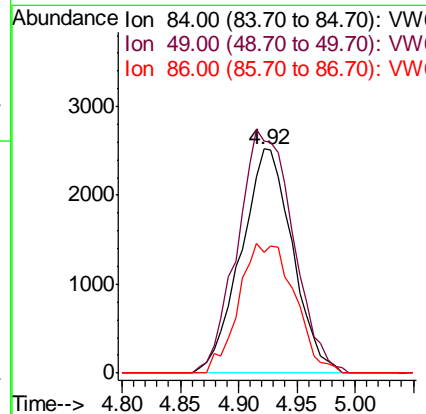
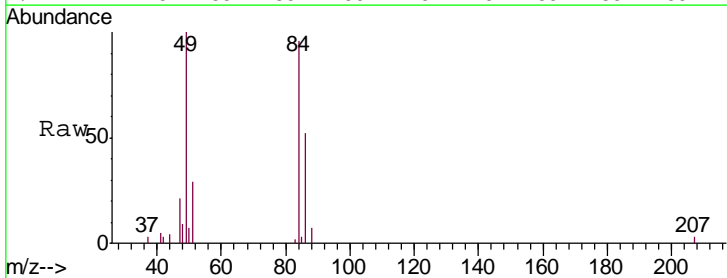
Instrument :
 MSVOA_W
 ClientSampled :
 ETH0

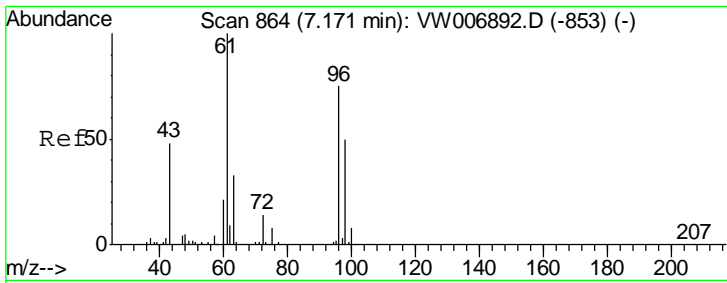
Tgt Ion: 43 Resp: 1587
 Ion Ratio Lower Upper
 43 100
 58 28.9 0.0 65.6



#16
 Methylene chloride
 Concen: 2.298 ug/L
 RT: 4.92 min Scan# 495
 Delta R.T. 0.00 min
 Lab File: VW006894.D
 Acq: 15 Nov 2018 12:56

Tgt Ion: 84 Resp: 7756
 Ion Ratio Lower Upper
 84 100
 49 103.7 79.3 147.3
 86 53.9 43.5 80.9

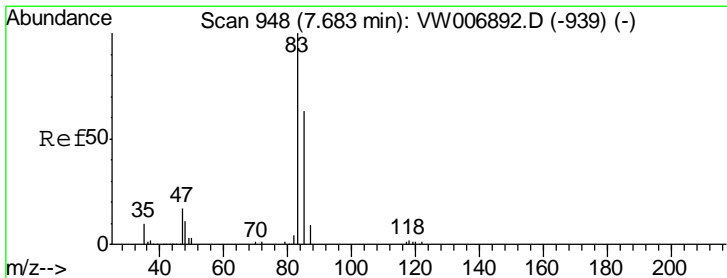
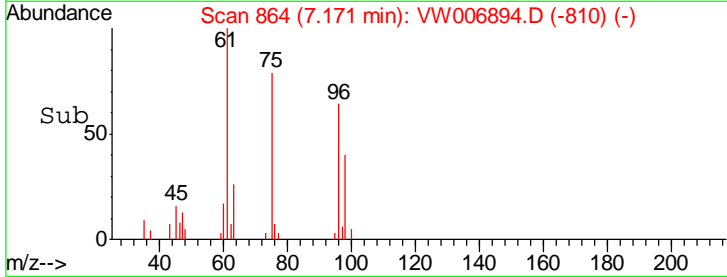
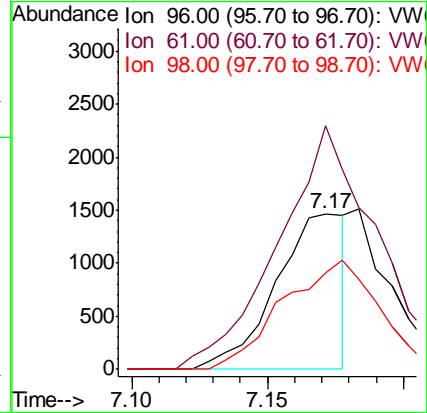
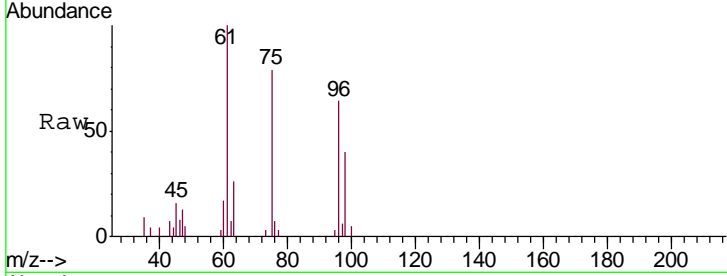




#22
 cis-1,2-Dichloroethene
 Concen: 1.021 ug/L
 RT: 7.17 min Scan# 864
 Delta R.T. 0.00 min
 Lab File: VW006894.D
 Acq: 15 Nov 2018 12:56

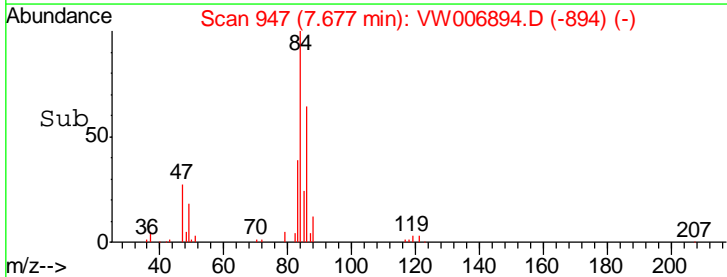
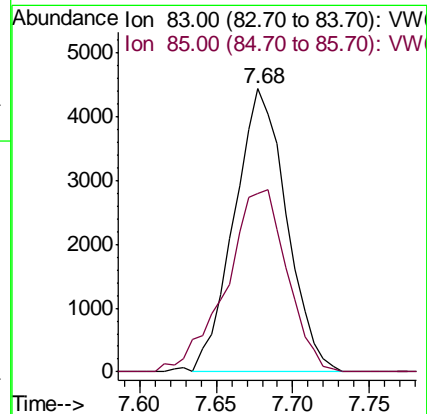
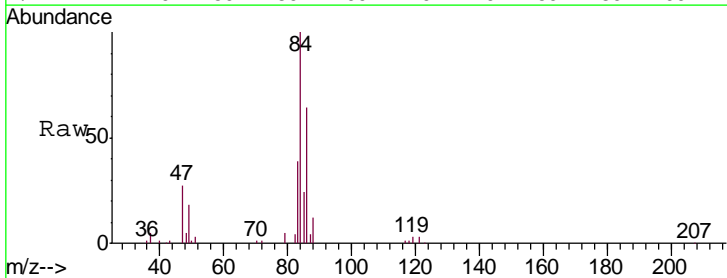
Instrument :
 MSVOA_W
 ClientSampled :
 ETH0

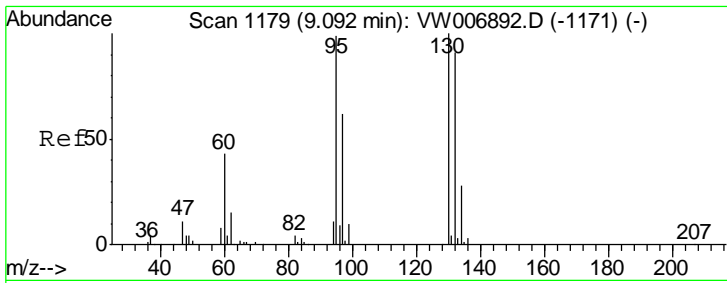
Tgt Ion	Resp	Lower	Upper
96	2625		
Ion Ratio			
96	100		
61	156.4	88.1	163.7
98	62.0	43.1	80.1



#25
 Chloroform
 Concen: 2.218 ug/L
 RT: 7.68 min Scan# 947
 Delta R.T. -0.01 min
 Lab File: VW006894.D
 Acq: 15 Nov 2018 12:56

Tgt Ion	Resp	Lower	Upper
83	10543		
Ion Ratio			
83	100		
85	74.8	45.4	84.2

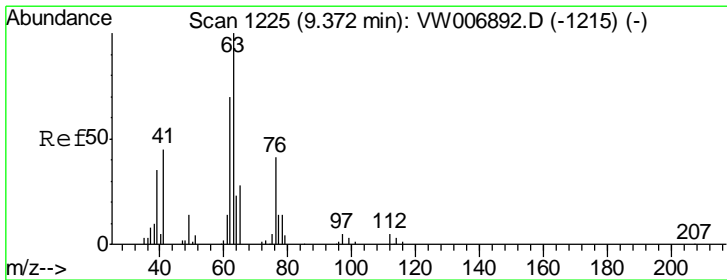
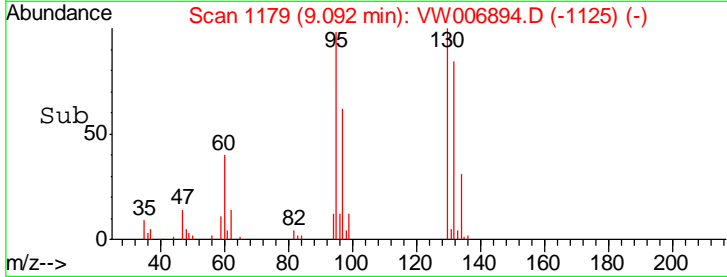
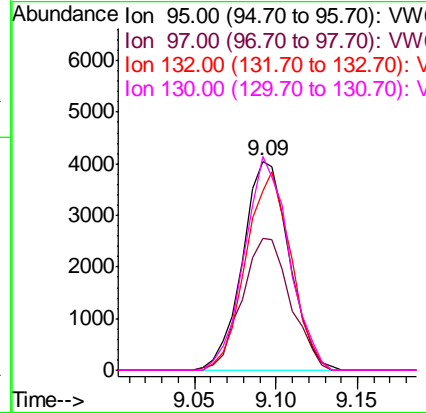
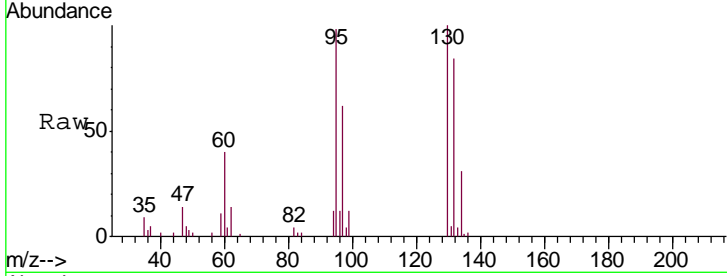




#35
 Trichloroethene
 Concen: 2.861 ug/L
 RT: 9.09 min Scan# 1179
 Delta R.T. 0.00 min
 Lab File: VW006894.D
 Acq: 15 Nov 2018 12:56

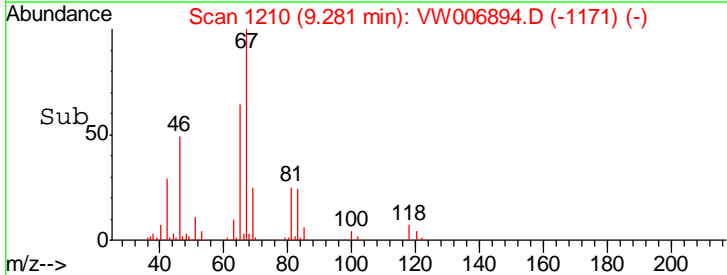
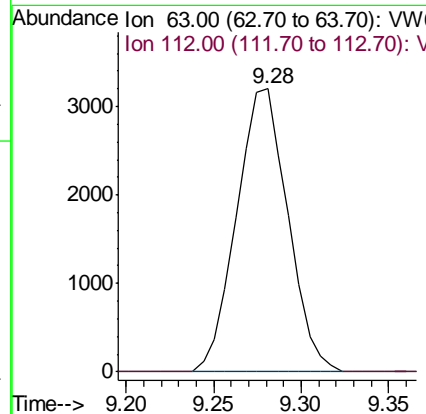
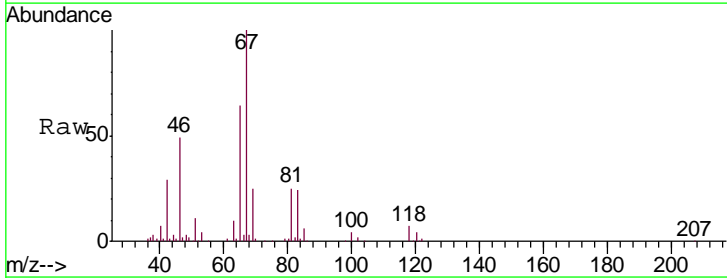
Instrument : MSVOA_W
 ClientSampled : ETH0

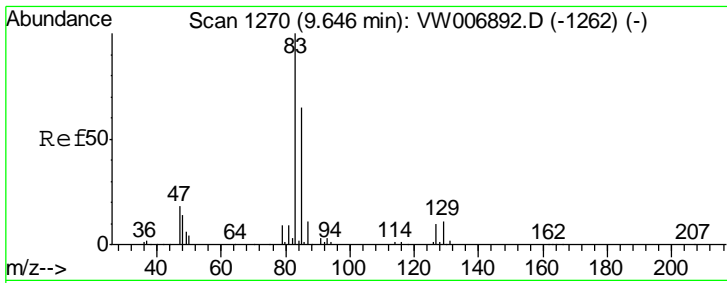
Tgt Ion	Resp	Lower	Upper
95	100		
97	65.5	45.1	83.9
132	91.3	65.7	121.9
130	97.4	68.7	127.7



#40
 1,2-Dichloropropane
 Concen: 2.571 ug/L
 RT: 9.28 min Scan# 1210
 Delta R.T. -0.09 min
 Lab File: VW006894.D
 Acq: 15 Nov 2018 12:56

Tgt Ion	Resp	Lower	Upper
63	100		
112	0.0	3.1	4.7#

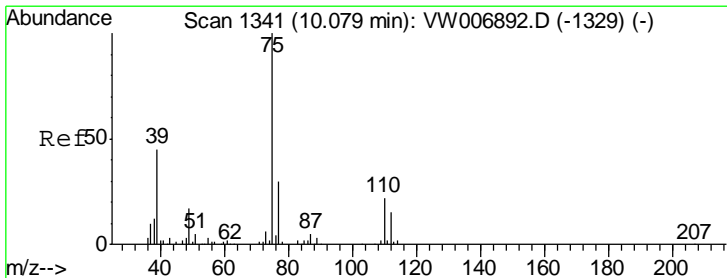
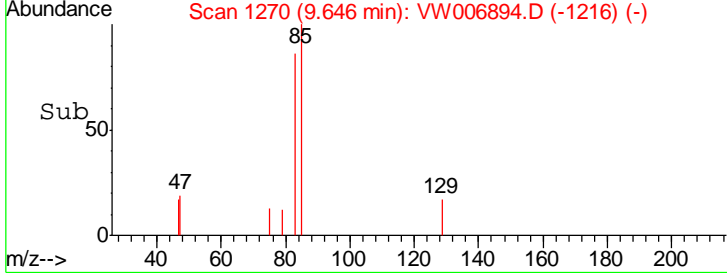
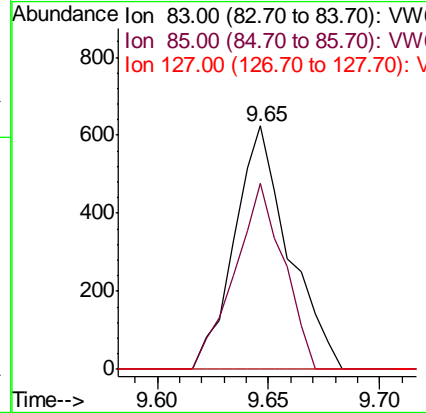
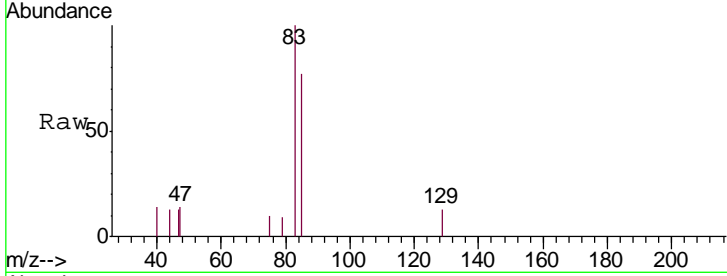




#41
 Bromodichloromethane
 Concen: 0.337 ug/L
 RT: 9.65 min Scan# 1270
 Delta R.T. 0.00 min
 Lab File: VW006894.D
 Acq: 15 Nov 2018 12:56

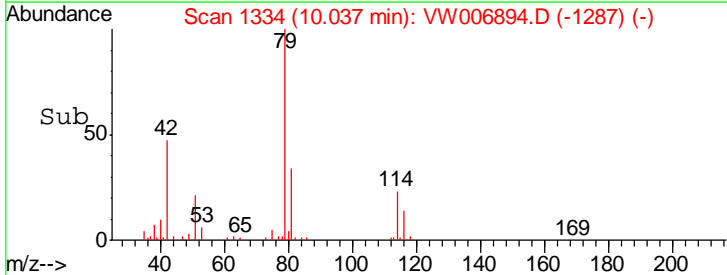
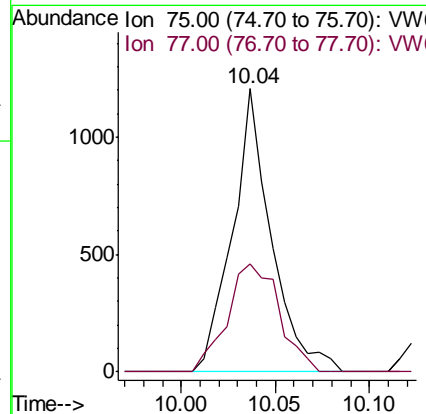
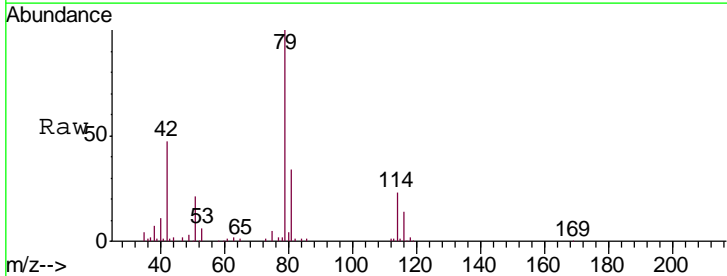
Instrument : MSVOA_W
 ClientSampled : ETH0

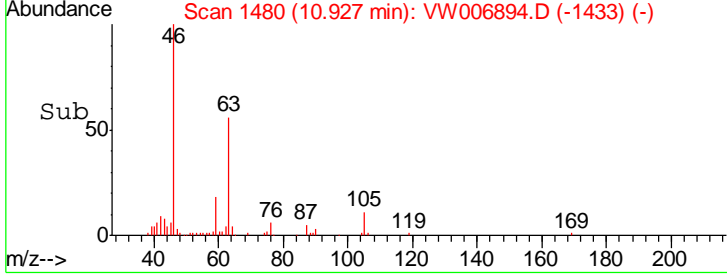
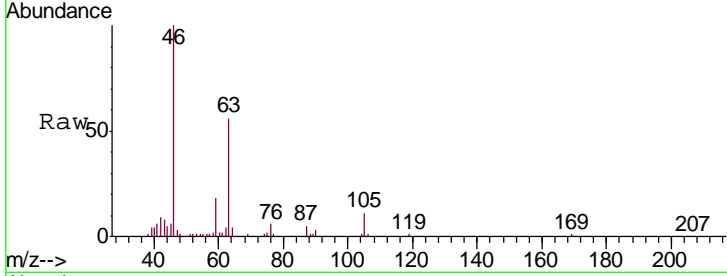
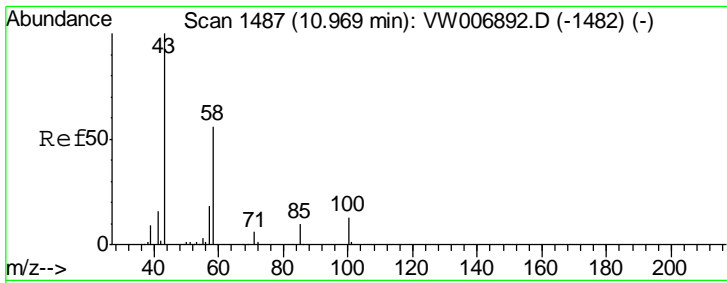
Tgt Ion	Resp	Lower	Upper
83	1054		
85	76.6	42.4	78.6
127	0.0	6.5	9.7#



#42
 cis-1,3-Dichloropropene
 Concen: 0.450 ug/L
 RT: 10.04 min Scan# 1334
 Delta R.T. -0.04 min
 Lab File: VW006894.D
 Acq: 15 Nov 2018 12:56

Tgt Ion	Resp	Lower	Upper
75	1733		
77	38.2	21.9	40.7





#49
 2-Hexanone
 Concen: 1.527 ug/L
 RT: 10.93 min Scan# 1480
 Delta R.T. -0.04 min
 Lab File: VW006894.D
 Acq: 15 Nov 2018 12:56

Instrument : MSVOA_W
 ClientSampled : ETH0

Tgt Ion: 43 Resp: 2258

Ion	Ratio	Lower	Upper
43	100		
58	21.2	44.6	67.0#
57	22.9	16.0	24.0
100	0.0	9.7	14.5#

