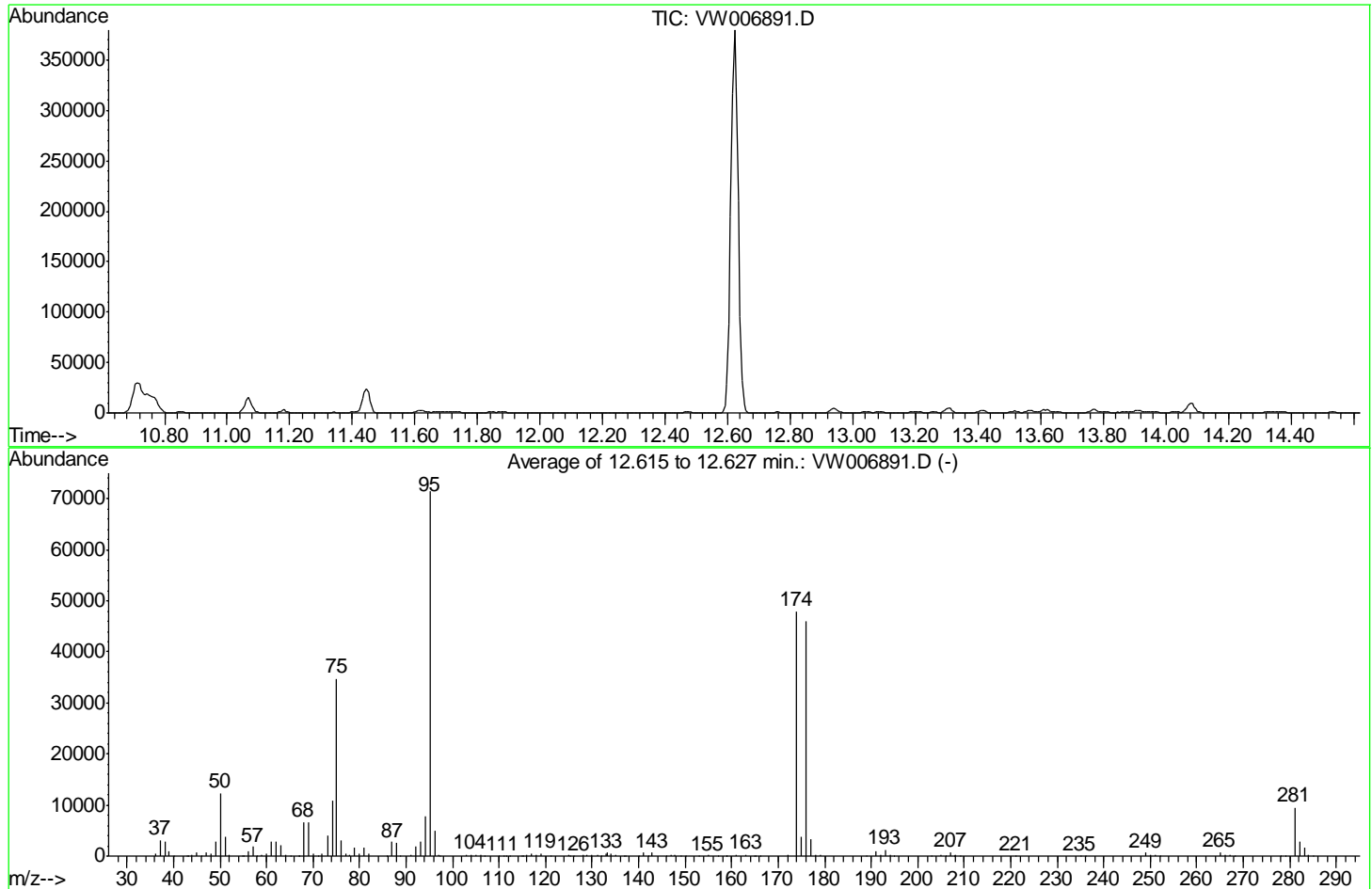


Data Path : Z:\VOASRV\HPCHEM1\MSVOA W\DATA\VW111518\  
 Data File : VW006891.D  
 Acq On : 15 Nov 2018 10:22  
 Operator : SY/AP  
 Sample : BFB82  
 Misc : 5.00G/10ML/MSVOA W/SOIL  
 ALS Vial : 1 Sample Multiplier: 1

Instrument :  
 MSVOA\_W  
 ClientSampleId :  
 BFB82

Integration File: LSCINT.P

Method : Z:\VOASRV\HPCHEM1\MSVOA\_W\METHOD\SOM2WLM111418S.M  
 Title : VOC Analysis  
 Last Update : Fri Nov 16 04:49:42 2018



AutoFind: Scans 1757, 1758, 1759; Background Corrected with Scan 1750

Target Mass	Rel. to Mass	Lower Limit%	Upper Limit%	Rel. Abn%	Raw Abn	Result Pass/Fail
50	95	15	40	17.2	12305	PASS
75	95	30	80	48.6	34733	PASS
95	95	100	100	100.0	71448	PASS
96	95	5	9	6.9	4922	PASS
173	174	0.00	2	0.0	0	PASS
174	95	50	120	67.1	47944	PASS
175	174	5	9	8.0	3850	PASS
176	174	95	101	95.8	45946	PASS
177	176	5	9	7.2	3302	PASS

Scan 1750 (12.573 min): VW006891.D  
BFB82

m/z	Abundance
40.00	81.0
44.00	91.0

**Instrument :**  
MSVOA\_W  
**ClientSampleId :**  
BFB82

m/z	Abundance
36.10	467.0
37.10	3346.0
38.10	3050.0
39.10	931.0
40.00	121.0
43.00	92.0
44.00	463.0
45.00	720.0
46.10	56.0
47.10	833.0
48.10	324.0
49.10	2918.0
50.10	11659.0
51.10	3704.0
52.20	141.0
54.90	177.0
56.00	738.0
57.10	1752.0
58.00	115.0
59.00	183.0
60.10	562.0
61.10	2837.0
62.00	2607.0
63.00	2117.0
64.00	167.0
65.20	62.0
66.90	139.0
68.00	6365.0
69.00	6513.0
70.00	518.0
71.20	108.0
72.10	407.0
73.10	4168.0
74.10	10162.0
75.10	32464.0
76.10	2519.0
77.10	310.0
77.80	185.0
78.90	1695.0
79.90	449.0
81.00	1590.0
82.00	417.0
85.80	71.0
87.00	2534.0
88.00	2269.0
88.80	114.0
91.00	256.0
92.00	1785.0
93.10	2714.0
94.10	7436.0
95.10	66040.0
96.10	4492.0
96.90	173.0
102.90	366.0
103.90	333.0
105.10	160.0
106.00	159.0
110.10	58.0
110.90	146.0
111.40	51.0
114.90	178.0
115.90	150.0
117.00	443.0
117.90	343.0
119.00	485.0
121.10	61.0
125.10	442.0
126.10	148.0
127.90	289.0
129.00	122.0
130.00	179.0
131.00	176.0
133.00	1661.0
133.90	398.0
135.10	170.0
137.20	149.0
141.10	489.0
142.10	107.0
142.90	425.0
146.00	80.0
147.00	251.0
147.80	132.0
149.00	136.0
154.90	165.0
157.00	114.0
158.80	81.0
161.00	188.0
163.10	341.0
164.90	165.0
166.10	57.0
174.00	40336.0
175.00	3278.0

Instrument :  
MSVOA\_W  
ClientSampleId :  
BFB82

176.00	38640.0
177.00	2948.0
178.00	237.0
179.00	339.0
189.00	99.0
191.10	1203.0
192.10	227.0
193.10	1545.0
194.10	385.0
195.00	215.0
202.90	95.0
205.00	353.0
207.10	1049.0
208.10	183.0
209.00	103.0
221.00	59.0
235.00	86.0
236.10	56.0
249.00	913.0
250.10	251.0
251.00	317.0
252.20	112.0
265.00	915.0
266.10	209.0
267.10	243.0
278.10	64.0
279.00	161.0
281.10	11215.0
282.10	3215.0
283.10	1855.0
284.00	311.0
285.10	111.0

**Instrument :**  
MSVOA\_W  
**ClientSampleId :**  
BFB82

m/z	Abundance
36.10	520.0
37.10	3201.0
38.10	2939.0
39.00	1181.0
40.00	105.0
43.20	89.0
44.10	450.0
45.00	837.0
46.10	85.0
47.00	813.0
48.10	518.0
49.00	2749.0
50.10	13986.0
51.00	4445.0
52.00	217.0
55.10	235.0
56.00	992.0
57.00	2097.0
58.00	106.0
59.00	181.0
60.00	596.0
61.10	3154.0
62.10	3406.0
63.00	2640.0
64.00	295.0
67.10	186.0
68.00	7401.0
69.10	7197.0
70.00	643.0
71.00	62.0
71.90	443.0
73.00	4528.0
74.10	12472.0
75.10	38824.0
76.10	3539.0
77.00	519.0
77.90	392.0
79.00	1826.0
80.00	656.0
81.00	1771.0
82.00	434.0
85.90	102.0
87.00	3168.0
88.00	2937.0
90.90	321.0
92.10	2160.0
93.10	2867.0
94.10	8712.0
95.10	78984.0
96.10	5962.0
97.20	172.0
103.00	270.0
103.90	441.0
105.10	173.0
106.00	386.0
106.90	81.0
110.00	66.0
110.90	86.0
111.50	57.0
112.20	54.0
115.10	168.0
116.00	243.0
116.90	450.0
118.00	299.0
119.00	581.0
124.90	362.0
125.30	317.0
126.00	113.0
128.00	233.0
128.80	167.0
130.00	223.0
131.10	125.0
131.90	51.0
133.20	1101.0
133.90	372.0
135.00	204.0
137.10	116.0
140.00	87.0
141.00	796.0
142.10	130.0
142.90	721.0
145.80	178.0
147.00	273.0
147.90	166.0
149.00	160.0
150.00	62.0
154.90	198.0
157.00	92.0
159.00	84.0
161.00	179.0
163.00	281.0
164.80	180.0

Instrument :  
MSVOA\_W  
ClientSampleId :  
BFB82

172.10	253.0
174.00	53632.0
175.00	4262.0
176.00	51576.0
177.00	3647.0
178.00	229.0
179.10	245.0
189.00	123.0
191.10	1077.0
192.00	270.0
193.00	1204.0
194.00	258.0
195.00	163.0
203.00	137.0
205.00	335.0
206.00	68.0
207.10	872.0
208.20	234.0
209.10	160.0
221.10	55.0
234.90	62.0
236.20	54.0
249.10	678.0
250.00	228.0
251.10	308.0
252.20	98.0
265.10	878.0
266.20	293.0
267.00	174.0
268.20	57.0
281.10	10147.0
282.10	3021.0
283.10	1930.0
284.10	313.0
285.10	160.0

**Instrument :**  
MSVOA\_W  
**ClientSampleId :**  
BFB82

m/z	Abundance
36.00	378.0
37.10	3035.0
38.10	2390.0
39.10	831.0
40.10	101.0
42.80	121.0
44.10	385.0
45.00	455.0
47.20	735.0
48.00	392.0
49.00	2662.0
50.10	11271.0
51.10	3412.0
52.00	166.0
55.10	98.0
56.10	870.0
57.00	1603.0
58.00	69.0
59.00	89.0
60.00	409.0
61.00	2723.0
62.10	2744.0
63.00	1952.0
64.00	193.0
67.00	195.0
68.00	6207.0
69.10	6225.0
70.00	342.0
72.00	347.0
73.10	3489.0
74.10	10198.0
75.10	32912.0
76.00	2898.0
77.00	342.0
77.80	222.0
79.00	1532.0
80.00	499.0
80.90	1624.0
82.00	309.0
85.90	99.0
87.00	2643.0
88.00	2453.0
90.90	217.0
92.00	1777.0
93.10	2796.0
94.10	7308.0
95.10	69320.0
96.10	4313.0
97.00	254.0
103.10	163.0
104.00	212.0
105.00	91.0
105.90	263.0
110.00	51.0
114.90	132.0
115.90	191.0
116.90	320.0
118.00	349.0
118.90	479.0
125.00	280.0
127.90	272.0
129.00	135.0
129.90	228.0
131.00	165.0
133.10	836.0
133.90	327.0
135.10	144.0
136.90	124.0
140.00	58.0
140.90	548.0
141.90	95.0
143.00	709.0
145.80	82.0
146.90	99.0
147.90	159.0
150.00	182.0
152.90	67.0
155.00	147.0
157.00	124.0
159.00	105.0
160.90	148.0
163.00	183.0
165.10	103.0
172.10	220.0
174.00	49864.0
175.10	4012.0
176.00	47624.0
177.00	3313.0
178.00	89.0
179.10	194.0
189.00	54.0
191.10	603.0

Instrument :  
MSVOA\_W  
ClientSampleId :  
BFB82

191.90	195.0
193.10	922.0
194.20	139.0
203.00	89.0
205.00	213.0
206.00	58.0
207.20	563.0
207.90	90.0
208.30	83.0
209.00	116.0
249.00	472.0
250.00	185.0
251.10	207.0
252.10	57.0
265.00	667.0
266.00	110.0
267.20	109.0
281.10	7315.0
282.10	2073.0
283.00	1032.0
284.00	253.0
285.10	73.0

**Instrument :**  
MSVOA\_W  
**ClientSampleId :**  
BFB82