

Data Path : Z:\VOASRV\HPCHEM1\MSVOA W\DATA\VW111520\
 Data File : VW017232.D
 Acq On : 15 Nov 2020 12:55
 Operator : SY/VA
 Sample : L4727-12
 Misc : 5.15G/10ML/MSVOA W/SOIL
 ALS Vial : 1 Sample Multiplier: 1

Instrument :
 MSVOA_W
ClientSampled :
 C0AC7

Manual Integrations
APPROVED
 MMDadoda
 11/17/2020 6:52:32 PM

Quant Time: Nov 16 13:18:30 2020
 Quant Method : Z:\VOASRV\HPCHEM1\MSVOA_W\METHOD\SOM2WLM110420S.M
 Quant Title : VOC Analysis
 QLast Update : Mon Nov 16 09:47:42 2020
 Response via : Initial Calibration

Internal Standards	R.T.	QIon	Response	Conc	Units	Dev(Min)
1) 1,4-Difluorobenzene	8.85	114	442126	25.00	ug/L	0.00
28) Chlorobenzene-d5	11.63	117	320481	25.00	ug/L	0.00
60) 1,4-Dichlorobenzene-d4	13.56	152	78303	25.00	ug/L	0.00

System Monitoring Compounds

4) Vinyl Chloride-d3	2.35	65	123850	22.24	ug/L	0.00
Spiked Amount	25.000	Range	30 - 150	Recovery	=	88.96%
7) Chloroethane-d5	2.89	69	107986	25.16	ug/L	0.00
Spiked Amount	25.000	Range	30 - 150	Recovery	=	100.64%
10) 1,1-Dichloroethene-d2	4.02	63	167451	16.81	ug/L	0.00
Spiked Amount	25.000	Range	45 - 110	Recovery	=	67.24%
20) 2-Butanone-d5	7.09	46	35742	28.70	ug/L	0.01
Spiked Amount	50.000	Range	20 - 135	Recovery	=	57.40%
24) Chloroform-d	7.65	84	249259	24.15	ug/L	0.00
Spiked Amount	25.000	Range	40 - 150	Recovery	=	96.60%
26) 1,2-Dichloroethane-d4	8.31	65	115288	22.47	ug/L	0.00
Spiked Amount	25.000	Range	70 - 130	Recovery	=	89.88%
29) Benzene-d6	8.28	84	489034	29.96	ug/L	0.00
Spiked Amount	25.000	Range	20 - 135	Recovery	=	119.84%
33) 1,2-Dichloropropane-d6	9.27	67	134447	29.78	ug/L	0.00
Spiked Amount	25.000	Range	70 - 120	Recovery	=	119.12%
37) Toluene-d8	10.33	98	433783	28.19	ug/L	0.00
Spiked Amount	25.000	Range	30 - 130	Recovery	=	112.76%
38) trans-1,3-Dichloropropene-	10.58	79	42415	20.84	ug/L	0.00
Spiked Amount	25.000	Range	30 - 135	Recovery	=	83.36%
39) 2-Hexanone-d5	10.93	63	27695	35.16	ug/L	0.00
Spiked Amount	50.000	Range	20 - 135	Recovery	=	70.32%
48) 1,1,2,2-Tetrachloroethane-	12.69	84	79727	20.28	ug/L	0.00
Spiked Amount	25.000	Range	45 - 120	Recovery	=	81.12%
61) 1,2-Dichlorobenzene-d4	13.85	152	73010	26.46	ug/L	0.00
Spiked Amount	25.000	Range	75 - 120	Recovery	=	105.84%

Target Compounds					Ovalue
13) Acetone	4.16	43	1856m	2.226	ug/L
16) Methylene chloride	4.92	84	9502	1.594	ug/L 94
44) Toluene	10.39	91	4291	0.232	ug/L 98

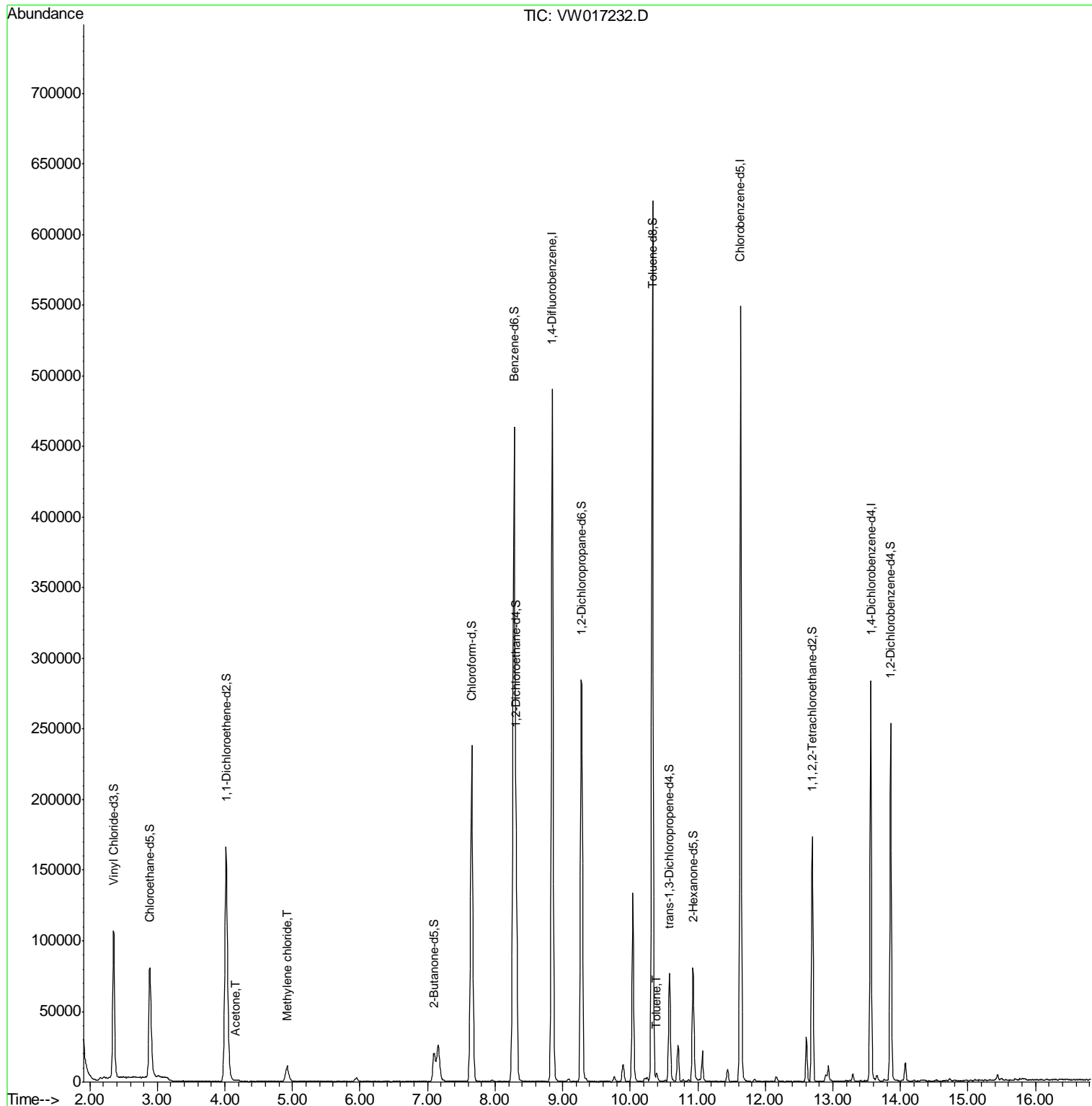
(#) = qualifier out of range (m) = manual integration (+) = signals summed

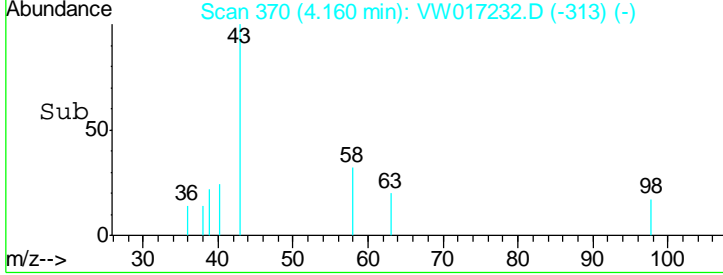
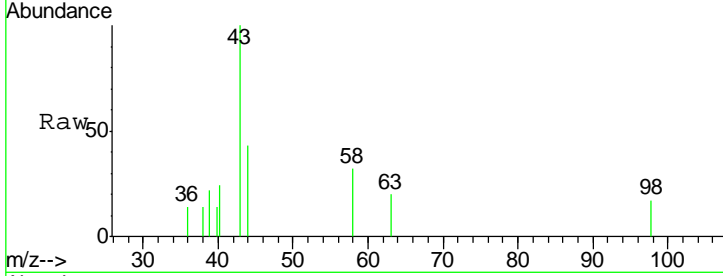
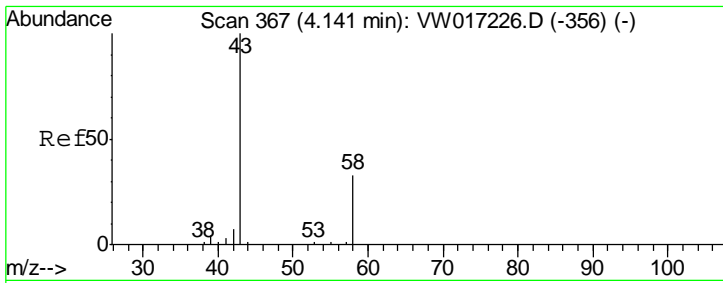
Data Path : Z:\VOASRV\HPCHEM1\MSVOA W\DATA\VW111520\
 Data File : VW017232.D
 Acq On : 15 Nov 2020 12:55
 Operator : SY/VA
 Sample : L4727-12
 Misc : 5.15G/10ML/MSVOA W/SOIL
 ALS Vial : 1 Sample Multiplier: 1

Instrument :
 MSVOA_W
Client Sampled :
 C0AC7

Manual Integrations
APPROVED
 MMDadoda
 11/17/2020 6:52:32 PM

Quant Time: Nov 16 13:18:30 2020
 Quant Method : Z:\VOASRV\HPCHEM1\MSVOA_W\METHOD\SOM2WLM110420S.M
 Quant Title : VOC Analysis
 QLast Update : Mon Nov 16 09:47:42 2020
 Response via : Initial Calibration





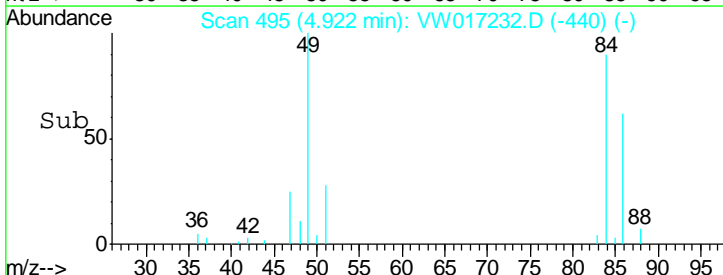
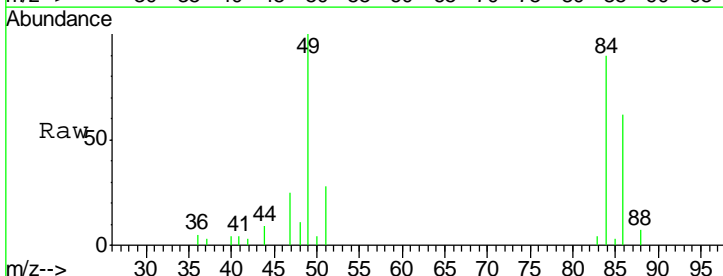
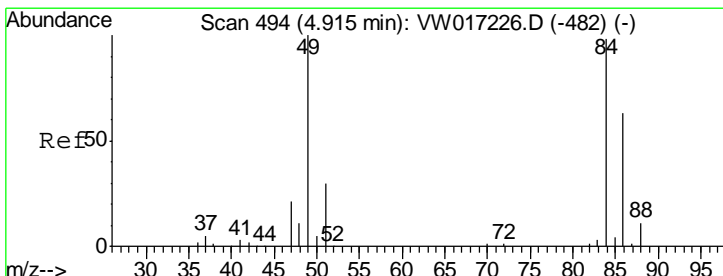
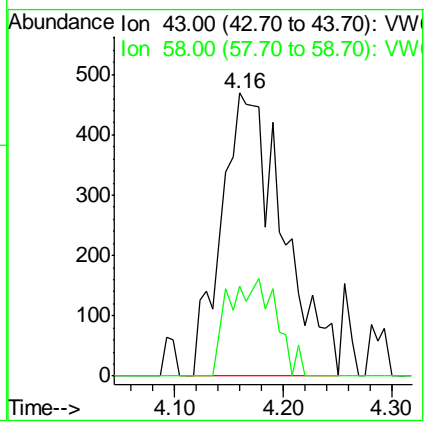
#13
 Acetone
 Concen: 2.226 ug/L m
 RT: 4.16 min Scan# 370
 Delta R.T. 0.02 min
 Lab File: VW017232.D
 Acq: 15 Nov 2020 12:55

Tgt Ion	Ratio	Lower	Upper
43	100		
58	6.4	0.0	69.2

Instrument :
 MSVOA_W
ClientSampled :
 C0AC7

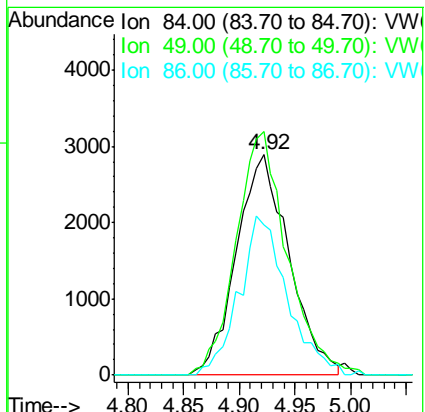
Manual Integrations
APPROVED

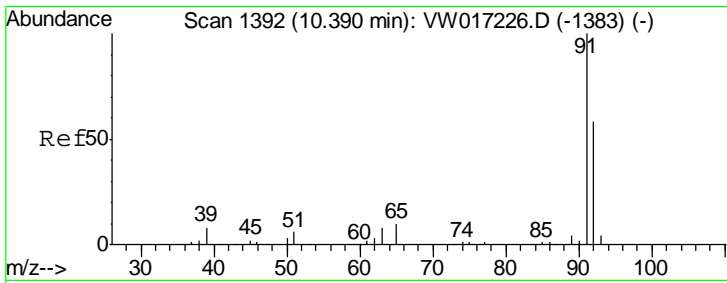
MMDadoda
 11/17/2020 6:52:32 PM



#16
 Methylene chloride
 Concen: 1.594 ug/L
 RT: 4.92 min Scan# 495
 Delta R.T. 0.01 min
 Lab File: VW017232.D
 Acq: 15 Nov 2020 12:55

Tgt Ion	Ratio	Lower	Upper
84	100		
49	110.6	72.3	134.3
86	68.1	45.1	83.7





#44
 Toluene
 Concen: 0.232 ug/L
 RT: 10.39 min Scan# 1392
 Delta R.T. -0.00 min
 Lab File: VW017232.D
 Acq: 15 Nov 2020 12:55

Instrument :
 MSVOA_W
ClientSampled :
 C0AC7

Tot Ion	Ion	Resp	Lower	Upper
4291	91	100		
	92	57.5	41.4	76.8

Manual Integrations
APPROVED
 MMDadoda
 11/17/2020 6:52:32 PM

