

Data Path : Z:\VOASRV\HPCHEM1\MSVOA W\DATA\VW111520\
 Data File : VW017241.D
 Acq On : 15 Nov 2020 16:26
 Operator : SY/VA
 Sample : L4739-02
 Misc : 5.61G/10ML/MSVOA W/SOIL
 ALS Vial : 1 Sample Multiplier: 1

Instrument :
 MSVOA_W
ClientSampled :
 GB0Z1

Manual Integrations
APPROVED
 MMDadoda
 11/17/2020 6:52:41 PM

Quant Time: Nov 16 14:43:53 2020
 Quant Method : Z:\VOASRV\HPCHEM1\MSVOA_W\METHOD\SOM2WLM110420S.M
 Quant Title : VOC Analysis
 QLast Update : Mon Nov 16 11:48:24 2020
 Response via : Initial Calibration

Internal Standards	R.T.	QIon	Response	Conc	Units	Dev(Min)
1) 1,4-Difluorobenzene	8.85	114	462304	25.00	ug/L	0.00
28) Chlorobenzene-d5	11.63	117	402458	25.00	ug/L	0.00
60) 1,4-Dichlorobenzene-d4	13.56	152	167363	25.00	ug/L	0.00

System Monitoring Compounds

4) Vinyl Chloride-d3	2.36	65	93956	16.14	ug/L	0.00
Spiked Amount	25.000	Range	30 - 150	Recovery	=	64.56%
7) Chloroethane-d5	2.90	69	83800	18.68	ug/L	0.00
Spiked Amount	25.000	Range	30 - 150	Recovery	=	74.72%
10) 1,1-Dichloroethene-d2	4.02	63	148066	14.22	ug/L	0.00
Spiked Amount	25.000	Range	45 - 110	Recovery	=	56.88%
20) 2-Butanone-d5	7.09	46	46152	35.44	ug/L	0.00
Spiked Amount	50.000	Range	20 - 135	Recovery	=	70.88%
24) Chloroform-d	7.65	84	222608	20.63	ug/L	0.00
Spiked Amount	25.000	Range	40 - 150	Recovery	=	82.52%
26) 1,2-Dichloroethane-d4	8.31	65	115417m	21.51	ug/L	0.00
Spiked Amount	25.000	Range	70 - 130	Recovery	=	86.04%
29) Benzene-d6	8.28	84	431758	21.07	ug/L	0.00
Spiked Amount	25.000	Range	20 - 135	Recovery	=	84.28%
33) 1,2-Dichloropropane-d6	9.28	67	120232	21.21	ug/L	0.00
Spiked Amount	25.000	Range	70 - 120	Recovery	=	84.84%
37) Toluene-d8	10.33	98	420876	21.78	ug/L	0.00
Spiked Amount	25.000	Range	30 - 130	Recovery	=	87.12%
38) trans-1,3-Dichloropropene-	10.58	79	51295	20.07	ug/L	0.00
Spiked Amount	25.000	Range	30 - 135	Recovery	=	80.28%
39) 2-Hexanone-d5	10.93	63	40229	40.66	ug/L	0.00
Spiked Amount	50.000	Range	20 - 135	Recovery	=	81.32%
48) 1,1,2,2-Tetrachloroethane-	12.69	84	98919	20.03	ug/L	0.00
Spiked Amount	25.000	Range	45 - 120	Recovery	=	80.12%
61) 1,2-Dichlorobenzene-d4	13.85	152	123625	20.97	ug/L	0.00
Spiked Amount	25.000	Range	75 - 120	Recovery	=	83.88%

Target Compounds					Ovalue
13) Acetone	4.13	43	14131	16.207	ug/L 97
44) Toluene	10.39	91	9994	0.430	ug/L 94

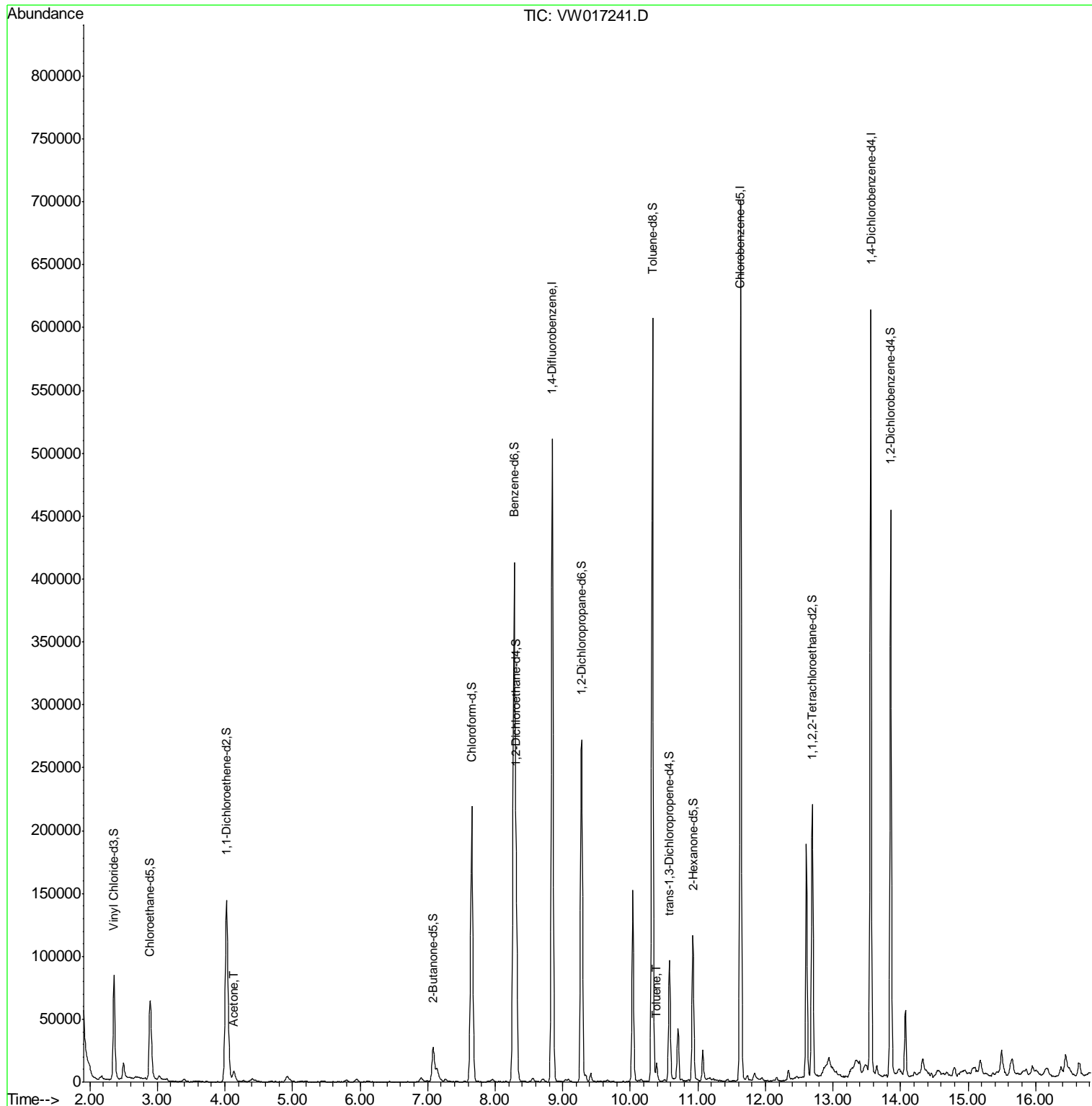
(#) = qualifier out of range (m) = manual integration (+) = signals summed

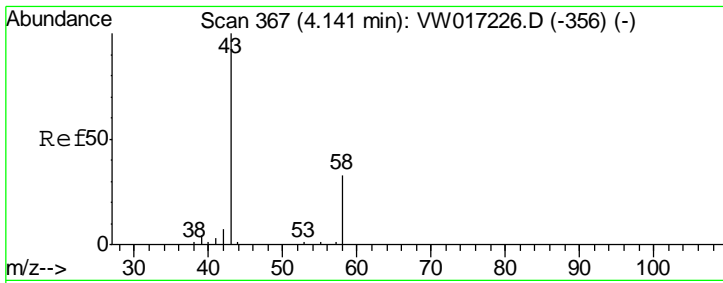
Data Path : Z:\VOASRV\HPCHEM1\MSVOA W\DATA\VW111520\
 Data File : VW017241.D
 Acq On : 15 Nov 2020 16:26
 Operator : SY/VA
 Sample : L4739-02
 Misc : 5.61G/10ML/MSVOA W/SOIL
 ALS Vial : 1 Sample Multiplier: 1

Instrument :
 MSVOA_W
ClientSampled :
 GB0Z1

Manual Integrations
APPROVED
 MMDadoda
 11/17/2020 6:52:41 PM

Quant Time: Nov 16 14:43:53 2020
 Quant Method : Z:\VOASRV\HPCHEM1\MSVOA_W\METHOD\SOM2WLM110420S.M
 Quant Title : VOC Analysis
 QLast Update : Mon Nov 16 11:48:24 2020
 Response via : Initial Calibration





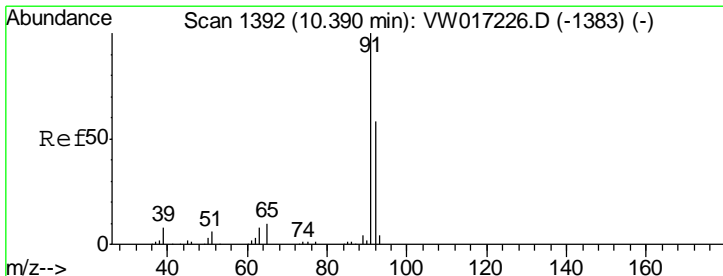
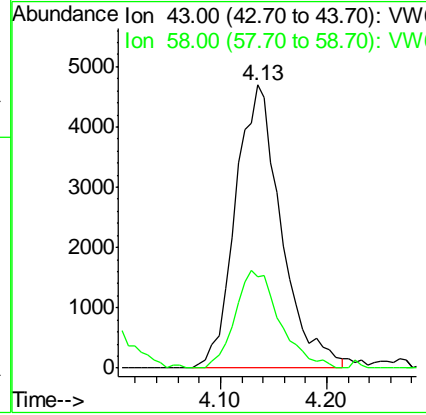
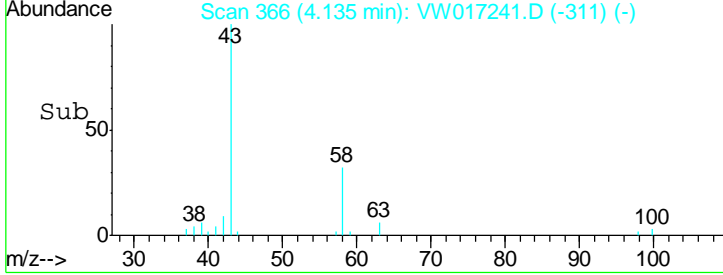
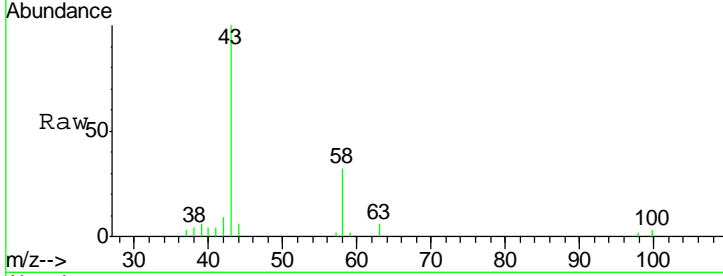
#13
 Acetone
 Concen: 16.207 ug/L
 RT: 4.13 min Scan# 366
 Delta R.T. 0.01 min
 Lab File: VW017241.D
 Acq: 15 Nov 2020 16:26

Instrument :
 MSVOA_W
ClientSampled :
 GB0Z1

Tgt Ion	Ratio	Lower	Upper
43	100		
58	33.1	0.0	69.2

Manual Integrations
APPROVED

MMDadoda
 11/17/2020 6:52:41 PM



#44
 Toluene
 Concen: 0.430 ug/L
 RT: 10.39 min Scan# 1392
 Delta R.T. -0.00 min
 Lab File: VW017241.D
 Acq: 15 Nov 2020 16:26

Tgt Ion	Ratio	Lower	Upper
91	100		
92	63.4	41.4	76.8

