

Data Path : Z:\voasrv\HPCHEM1\MSVOA_W\Data\VW111725\
 Data File : VW032450.D
 Acq On : 17 Nov 2025 12:20
 Operator : SY/MD
 Sample : Q3624-01
 Misc : 5.66g/5mL/MSVOA_W/SOIL/A
 ALS Vial : 7 Sample Multiplier: 1

Instrument :
 MSVOA_W
 ClientSampleId :
 OK-02-11122025

Integration Parameters: RTEINT.P

Integrator: RTE
 Smoothing : ON
 Sampling : 1
 Start Thrs: 0.2
 Stop Thrs : 0

Filtering: 5
 Min Area: 3 % of largest Peak
 Max Peaks: 100
 Peak Location: TOP

If leading or trailing edge < 100 prefer < Baseline drop else tangent >
 Peak separation: 5

Method : Z:\voasrv\HPCHEM1\MSVOA_W\Method\82W111025S.M
 Title : SW846 8260

Signal : TIC: VW032450.D\data.ms

peak #	R.T. min	first scan	max scan	last scan	PK TY	peak height	corr. area	corr. % max.	% of total
1	4.161	371	373	387	rVB5	11996	34875	2.04%	0.312%
2	4.948	493	502	514	rBV3	20712	77975	4.55%	0.699%
3	5.966	657	669	683	rBV3	319841	995490	58.11%	8.918%
4	7.008	833	840	849	rVB10	6692	23117	1.35%	0.207%
5	7.161	857	865	878	rVB	14276	46708	2.73%	0.418%
6	7.898	973	986	991	rBV	226250	555132	32.41%	4.973%
7	7.959	991	996	1008	rVB	315348	690039	40.28%	6.182%
8	8.313	1043	1054	1067	rBV	229317	522252	30.49%	4.679%
9	8.849	1132	1142	1153	rBV	635380	1288688	75.23%	11.545%
10	10.325	1372	1384	1391	rBV	953521	1657903	96.78%	14.853%
11	10.386	1391	1394	1401	rVB	21493	40205	2.35%	0.360%
12	11.629	1589	1598	1609	rBV	1007076	1713015	100.00%	15.347%
13	11.733	1609	1615	1621	rVV3	9038	21793	1.27%	0.195%
14	11.830	1625	1631	1642	rVB2	16835	39587	2.31%	0.355%
15	12.166	1674	1686	1694	rBV3	12517	29920	1.75%	0.268%
16	12.617	1750	1760	1769	rBV2	605524	1058980	61.82%	9.487%
17	12.867	1795	1801	1804	rBV	17839	31264	1.83%	0.280%
18	12.940	1808	1813	1819	rVB5	15240	26863	1.57%	0.241%
19	13.105	1834	1840	1845	rBV4	9866	17308	1.01%	0.155%
20	13.245	1857	1863	1870	rBV	35778	62197	3.63%	0.557%
21	13.556	1907	1914	1924	rBV	964788	1586179	92.60%	14.210%
22	13.751	1942	1946	1949	rBV3	18878	32177	1.88%	0.288%
23	13.781	1949	1951	1956	rVB2	13118	18830	1.10%	0.169%
24	13.867	1961	1965	1971	rBV8	9761	17963	1.05%	0.161%
25	14.062	1990	1997	2001	rBV2	54138	99112	5.79%	0.888%
26	14.202	2015	2020	2025	rVB	16452	25567	1.49%	0.229%
27	14.324	2035	2040	2045	rBV6	10585	18220	1.06%	0.163%
28	14.635	2081	2091	2094	rBV9	7763	17854	1.04%	0.160%
29	14.684	2094	2099	2103	rBV2	15397	27923	1.63%	0.250%
30	14.799	2110	2118	2124	rBV3	34696	81930	4.78%	0.734%
31	14.952	2138	2143	2150	rBV	27651	46706	2.73%	0.418%
32	15.056	2156	2160	2164	rBV5	11336	20750	1.21%	0.186%
33	15.098	2164	2167	2173	rVV7	14963	28948	1.69%	0.259%
34	15.171	2173	2179	2185	rVB3	16488	39567	2.31%	0.354%
35	15.415	2213	2219	2223	rVB5	9735	18184	1.06%	0.163%
36	15.647	2251	2257	2265	rVB4	10012	24605	1.44%	0.220%

Data Path : Z:\voasrv\HPCHEM1\MSVOA_W\Data\VW111725\
Data File : VW032450.D
Acq On : 17 Nov 2025 12:20
Operator : SY/MD
Sample : Q3624-01
Misc : 5.66g/5mL/MSVOA_W/SOIL/A
ALS Vial : 7 Sample Multiplier: 1

Instrument :
MSVOA_W
ClientSampleId :
OK-02-11122025

Integration Parameters: RTEINT.P
Integrator: RTE
Smoothing : ON Filtering: 5
Sampling : 1 Min Area: 3 % of largest Peak
Start Thrs: 0.2 Max Peaks: 100
Stop Thrs : 0 Peak Location: TOP

If leading or trailing edge < 100 prefer < Baseline drop else tangent >
Peak separation: 5

Method : Z:\voasrv\HPCHEM1\MSVOA_W\Method\82W111025S.M
Title : SW846 8260

37	15.818	2277	2285	2287	rBV8	7136	17986	1.05%	0.161%
38	15.854	2287	2291	2297	rVB5	20222	38390	2.24%	0.344%
39	16.165	2335	2342	2349	rBV10	12711	31625	1.85%	0.283%
40	16.366	2363	2375	2380	rBV10	12804	36407	2.13%	0.326%

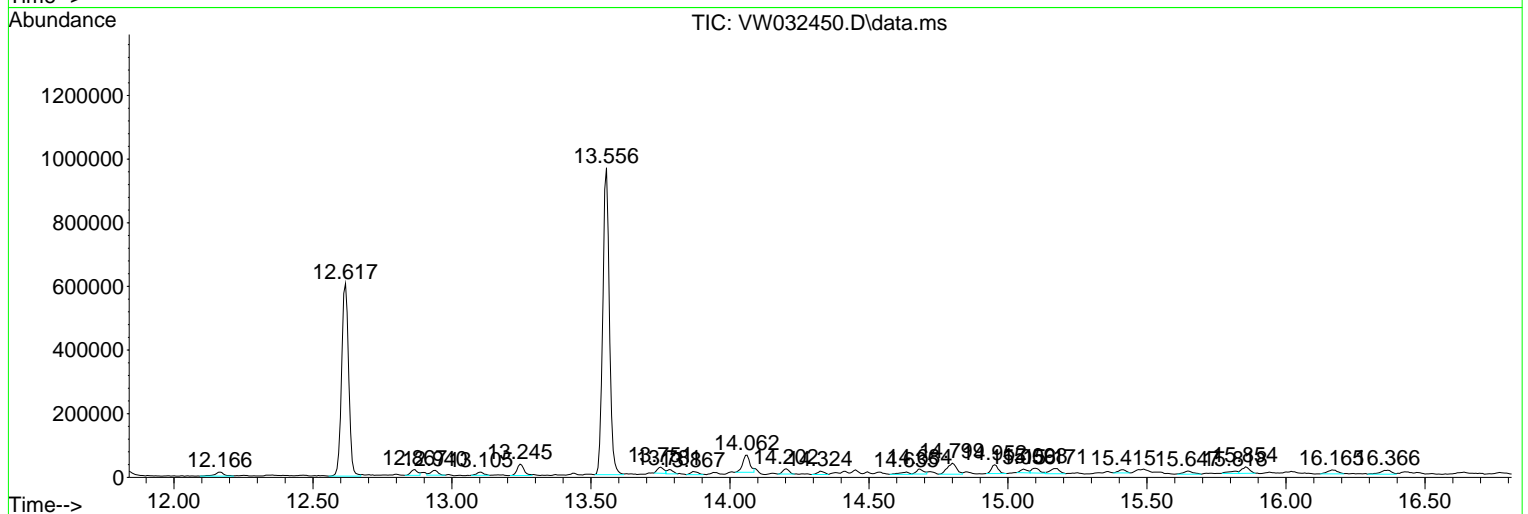
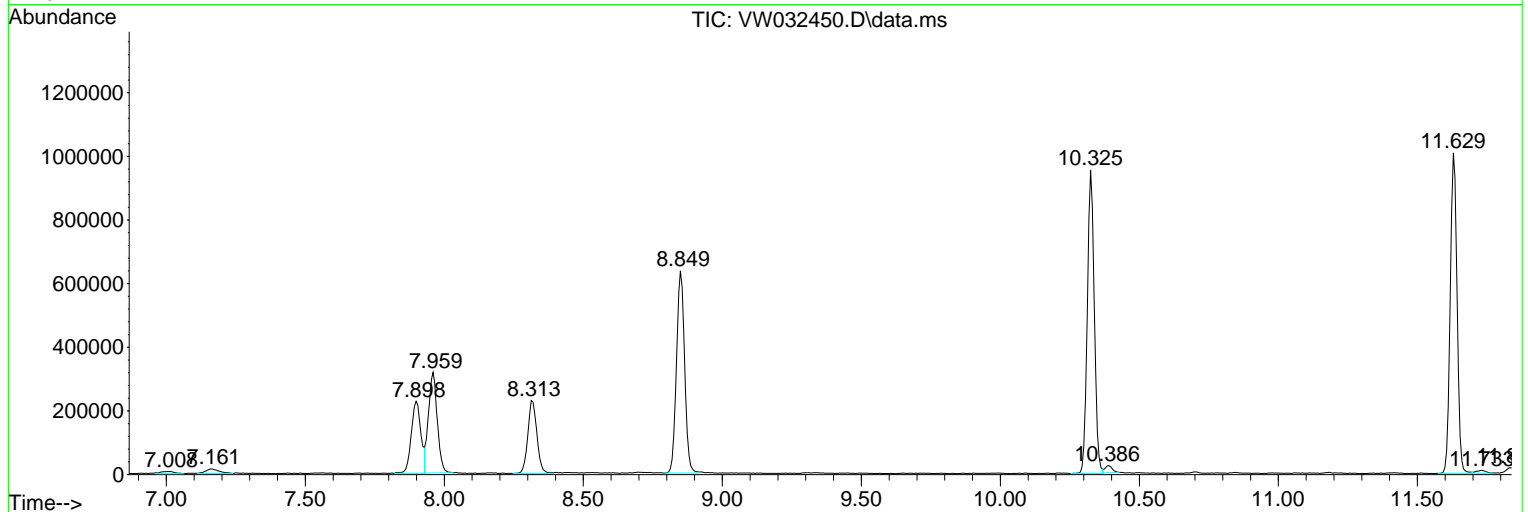
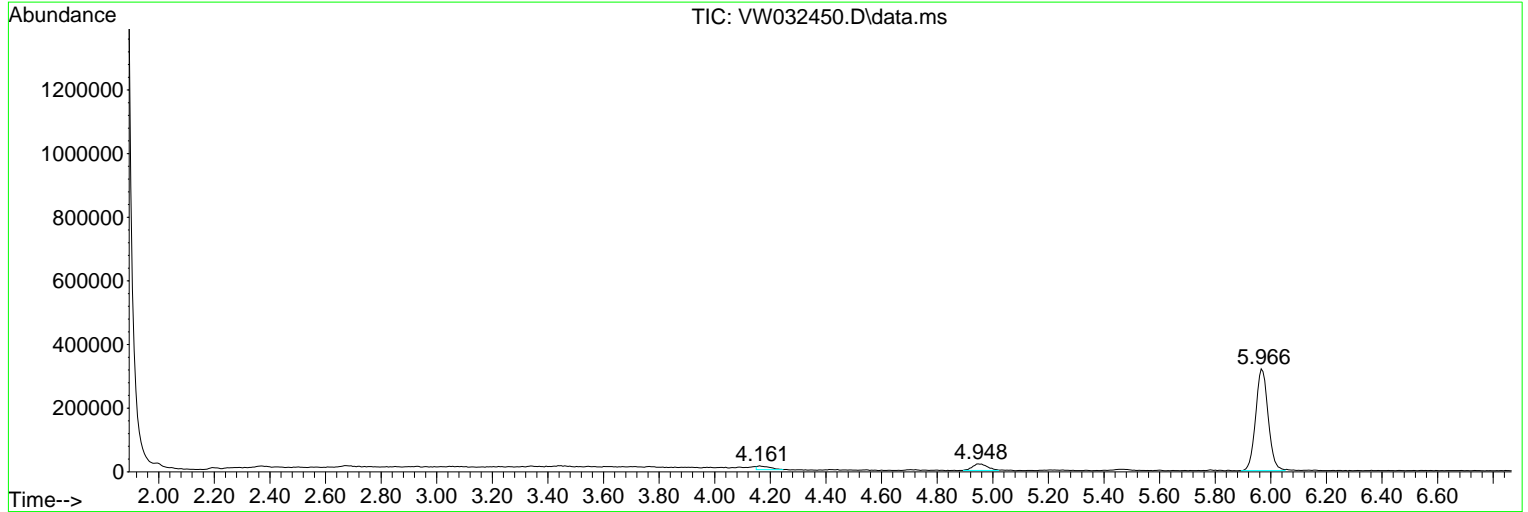
Sum of corrected areas: 11162234

Data Path : Z:\voasrv\HPCHEM1\MSVOA_W\Data\VW111725\
 Data File : VW032450.D
 Acq On : 17 Nov 2025 12:20
 Operator : SY/MD
 Sample : Q3624-01
 Misc : 5.66g/5mL/MSVOA_W/SOIL/A
 ALS Vial : 7 Sample Multiplier: 1

Instrument :
 MSVOA_W
 ClientSampleId :
 OK-02-11122025

Quant Method : Z:\voasrv\HPCHEM1\MSVOA_W\Method\82W111025S.M
 Quant Title : SW846 8260

TIC Library : C:\Database\NIST20.L
 TIC Integration Parameters: LSCINT.P



Data Path : Z:\voasrv\HPCHEM1\MSVOA_W\Data\VW111725\
 Data File : VW032450.D
 Acq On : 17 Nov 2025 12:20
 Operator : SY/MD
 Sample : Q3624-01
 Misc : 5.66g/5mL/MSVOA_W/SOIL/A
 ALS Vial : 7 Sample Multiplier: 1

Instrument :
 MSVOA_W
 ClientSampleId :
 OK-02-11122025

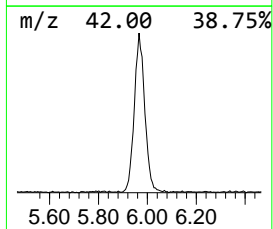
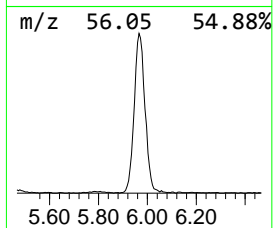
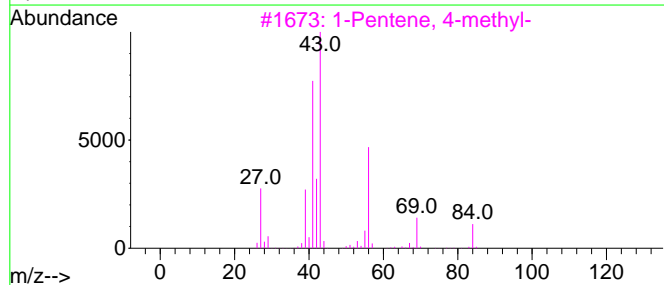
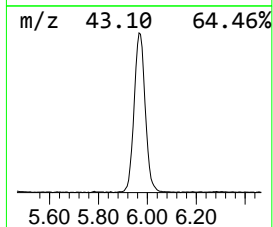
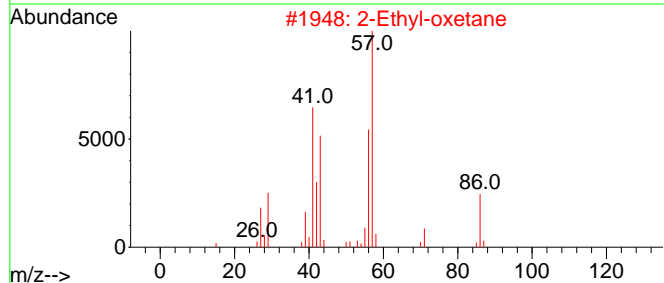
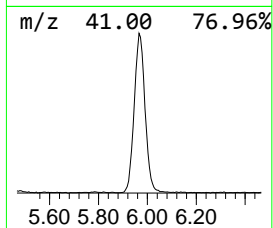
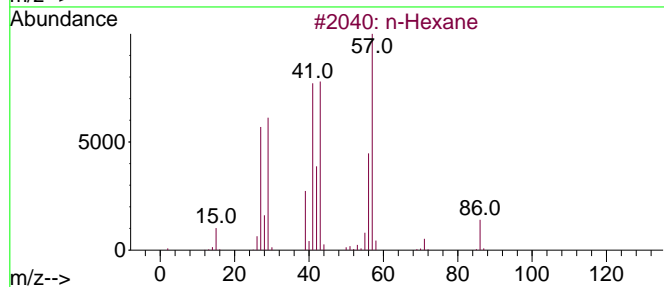
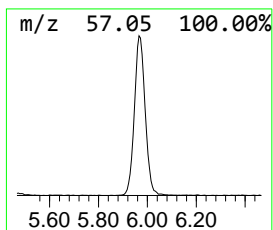
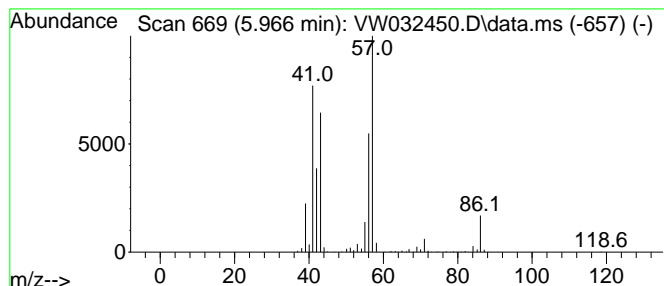
Quant Method : Z:\voasrv\HPCHEM1\MSVOA_W\Method\82W111025S.M
 Quant Title : SW846 8260

TIC Library : C:\Database\NIST20.L
 TIC Integration Parameters: LSCINT.P

 Peak Number 1 n-Hexane Concentration Rank 1

R.T.	EstConc	Area	Relative to ISTD	R.T.
5.966	72.13 ug/l	995490	Pentafluorobenzene	7.959

Hit#	of 5	Tentative ID	MW	MolForm	CAS#	Qual
1		n-Hexane	86	C6H14	000110-54-3	91
2		2-Ethyl-oxetane	86	C5H10O	1010386-40-2	64
3		1-Pentene, 4-methyl-	84	C6H12	000691-37-2	42
4		Pentane, 2,2,3,4-tetramethyl-	128	C9H20	001186-53-4	38
5		Butanal, 2-methyl-	86	C5H10O	000096-17-3	35



Data Path : Z:\voasrv\HPCHEM1\MSVOA_W\Data\VW111725\
Data File : VW032450.D
Acq On : 17 Nov 2025 12:20
Operator : SY/MD
Sample : Q3624-01
Misc : 5.66g/5mL/MSVOA_W/SOIL/A
ALS Vial : 7 Sample Multiplier: 1

Instrument :
MSVOA_W
ClientSampleId :
OK-02-11122025

Quant Method : Z:\voasrv\HPCHEM1\MSVOA_W\Method\82W111025S.M
Quant Title : SW846 8260

TIC Library : C:\Database\NIST20.L
TIC Integration Parameters: LSCINT.P

TIC Top Hit name	RT	EstConc	Units	Response	--Internal Standard--			
					#	RT	Resp	Conc
n-Hexane	5.966	72.1	ug/l	995490	1	7.959	690039	50.0