

Data Path : Z:\voasrv\HPCHEM1\MSVOA_W\Data\VW112025\
 Data File : VW032516.D
 Acq On : 20 Nov 2025 11:53
 Operator : SY/MD
 Sample : Q3681-01
 Misc : 5.78g/5mL/MSVOA_W/SOIL/A
 ALS Vial : 8 Sample Multiplier: 1

Instrument :
 MSVOA_W
 ClientSampleId :

Quant Time: Nov 21 01:20:44 2025
 Quant Method : Z:\voasrv\HPCHEM1\MSVOA_W\Method\82W111025S.M
 Quant Title : SW846 8260
 QLast Update : Tue Nov 11 03:48:21 2025
 Response via : Initial Calibration

Compound	R.T.	QIon	Response	Conc	Units	Dev(Min)

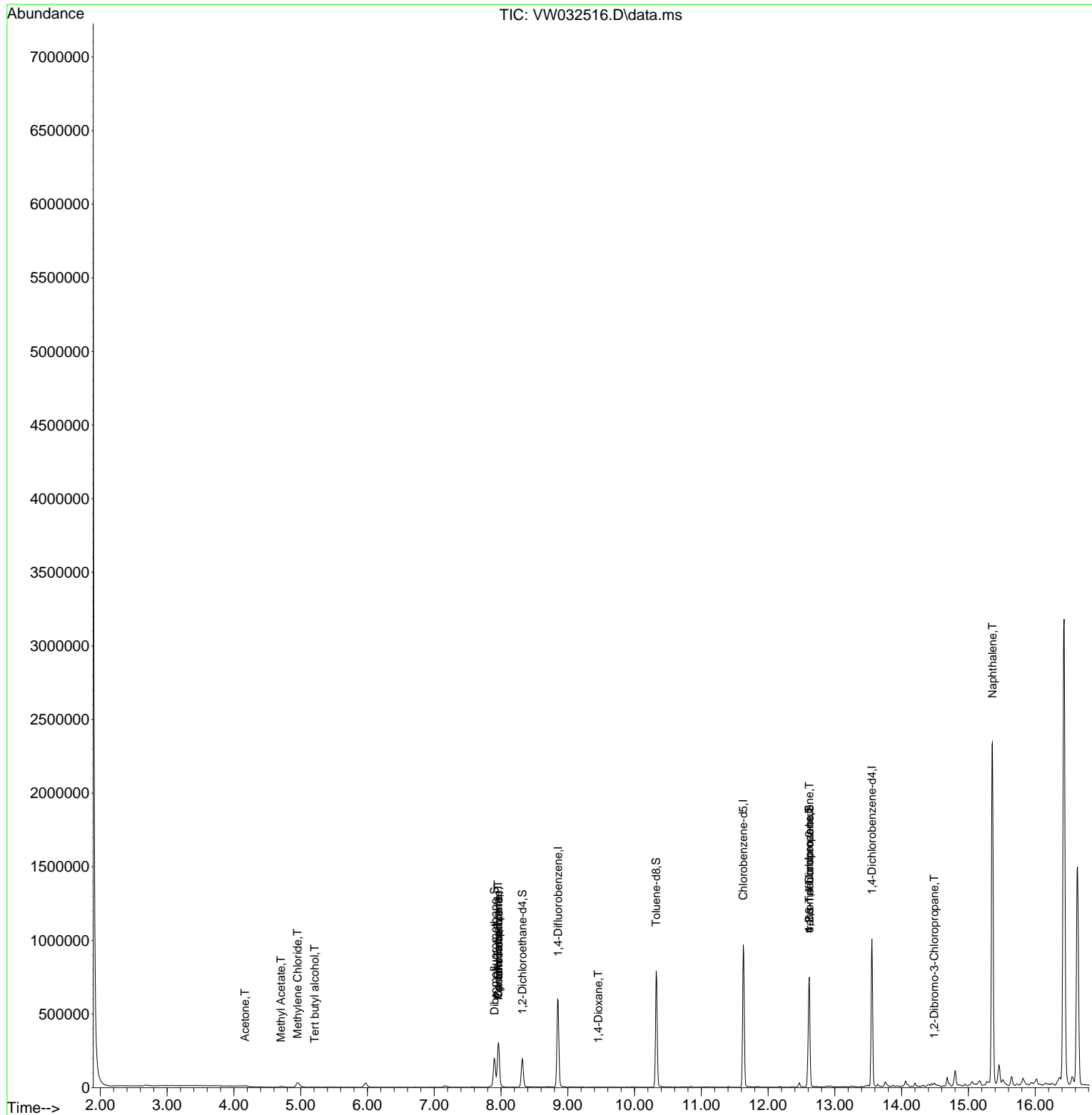
Internal Standards						
1) Pentafluorobenzene	7.965	168	215917	50.000	ug/l	0.00
34) 1,4-Difluorobenzene	8.855	114	508481	50.000	ug/l	0.00
63) Chlorobenzene-d5	11.629	117	528162	50.000	ug/l	0.00
72) 1,4-Dichlorobenzene-d4	13.556	152	248446	50.000	ug/l	0.00
System Monitoring Compounds						
33) 1,2-Dichloroethane-d4	8.319	65	155664	55.920	ug/l	0.00
Spiked Amount	50.000	Range 63 - 155	Recovery	=	111.840%	
35) Dibromofluoromethane	7.904	113	146522	48.128	ug/l	0.00
Spiked Amount	50.000	Range 70 - 134	Recovery	=	96.260%	
50) Toluene-d8	10.325	98	510080	43.674	ug/l	0.00
Spiked Amount	50.000	Range 74 - 123	Recovery	=	87.340%	
62) 4-Bromofluorobenzene	12.617	95	237804	53.900	ug/l	0.00
Spiked Amount	50.000	Range 17 - 146	Recovery	=	107.800%	
Target Compounds						
						Qvalue
11) Tert butyl alcohol	5.210	59	691	2.871	ug/l #	87
16) Acetone	4.167	43	3813	4.578	ug/l #	76
18) Methyl Acetate	4.704	43	9423	4.569	ug/l	94
20) Methylene Chloride	4.954	84	26907	9.034	ug/l	96
31) Cyclohexane	7.959	56	5587	1.213	ug/l #	1
36) 1,1-Dichloropropene	7.959	75	19417	4.329	ug/l #	50
38) Carbon Tetrachloride	7.959	117	23708	5.948	ug/l #	17
49) 1,4-Dioxane	9.459	88	75	2.547	ug/l #	42
76) 1,2,3-Trichloropropane	12.617	75	120384	35.338	ug/l #	1
81) trans-1,4-Dichloro-2-b...	12.617	75	120384	80.941	ug/l #	11
92) 1,2-Dibromo-3-Chloropr...	14.488	75	747	1.001	ug/l #	7
95) Naphthalene	15.360	128	2013397	168.735	ug/l	99

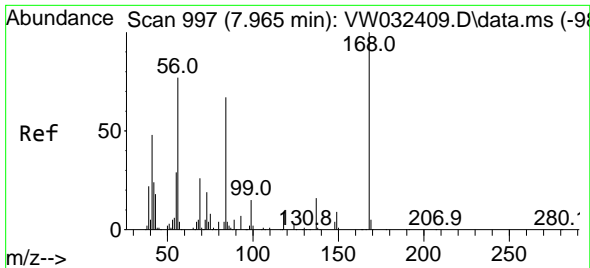
(#) = qualifier out of range (m) = manual integration (+) = signals summed

Data Path : Z:\voasrv\HPCHEM1\MSVOA_W\Data\VW112025\
 Data File : VW032516.D
 Acq On : 20 Nov 2025 11:53
 Operator : SY/MD
 Sample : Q3681-01
 Misc : 5.78g/5mL/MSVOA_W/SOIL/A
 ALS Vial : 8 Sample Multiplier: 1

Instrument :
 MSVOA_W
 ClientSampleId :

Quant Time: Nov 21 01:20:44 2025
 Quant Method : Z:\voasrv\HPCHEM1\MSVOA_W\Method\82W111025S.M
 Quant Title : SW846 8260
 QLast Update : Tue Nov 11 03:48:21 2025
 Response via : Initial Calibration

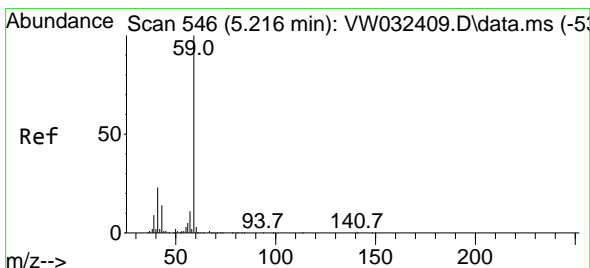
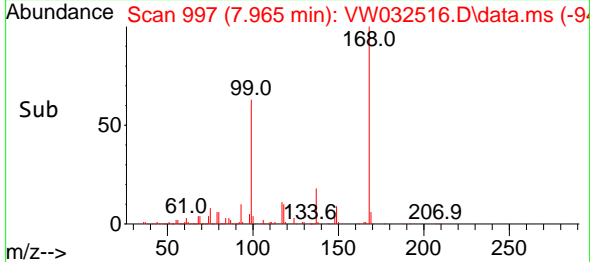
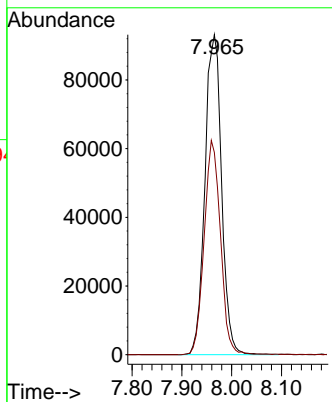
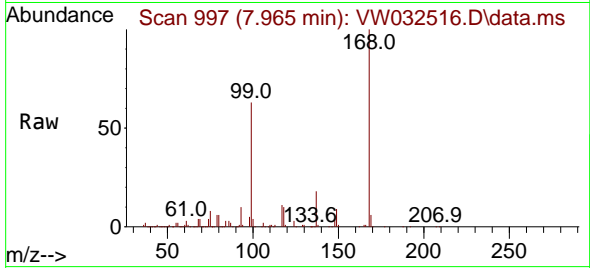




#1
 Pentafluorobenzene
 Concen: 50.000 ug/l
 RT: 7.965 min Scan# 99
 Delta R.T. 0.000 min
 Lab File: VW032516.D
 Acq: 20 Nov 2025 11:53

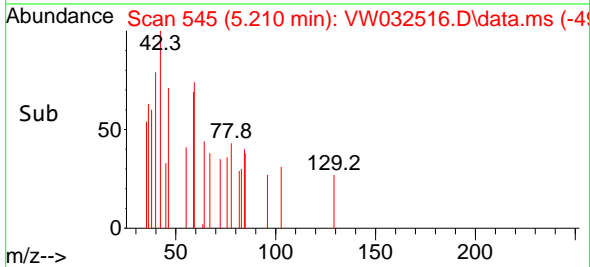
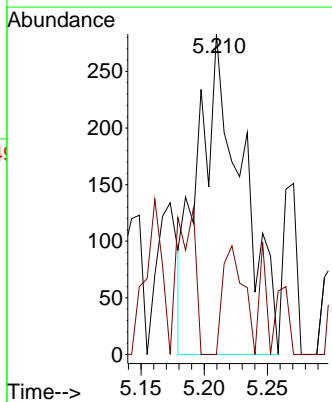
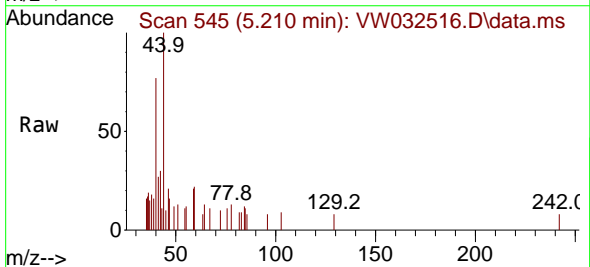
Instrument :
 MSVOA_W
 ClientSampleId :

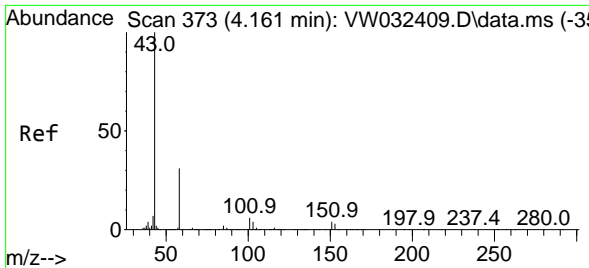
Tgt Ion:168 Resp: 215917
 Ion Ratio Lower Upper
 168 100
 99 63.2 45.4 68.2



#11
 Tert butyl alcohol
 Concen: 2.871 ug/l
 RT: 5.210 min Scan# 545
 Delta R.T. -0.006 min
 Lab File: VW032516.D
 Acq: 20 Nov 2025 11:53

Tgt Ion: 59 Resp: 691
 Ion Ratio Lower Upper
 59 100
 57 15.8 8.6 12.8#

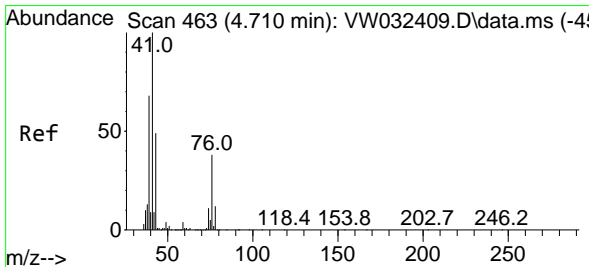
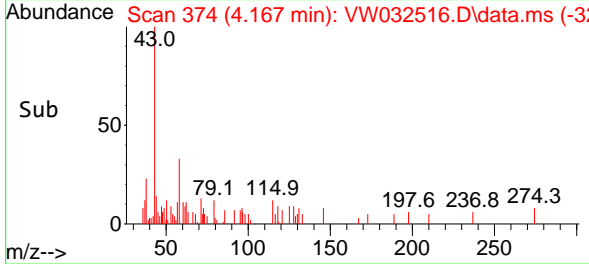
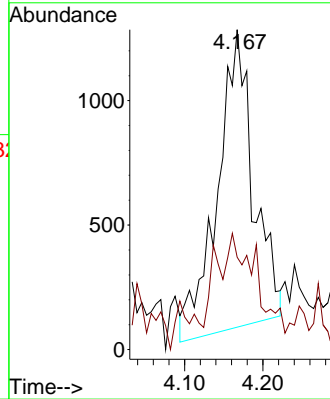
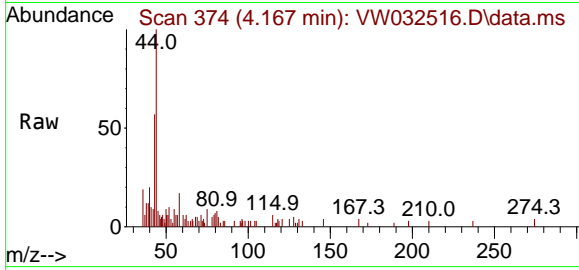




#16
 Acetone
 Concen: 4.578 ug/l
 RT: 4.167 min Scan# 31
 Delta R.T. 0.006 min
 Lab File: VW032516.D
 Acq: 20 Nov 2025 11:53

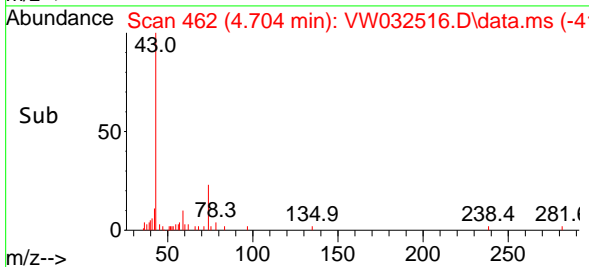
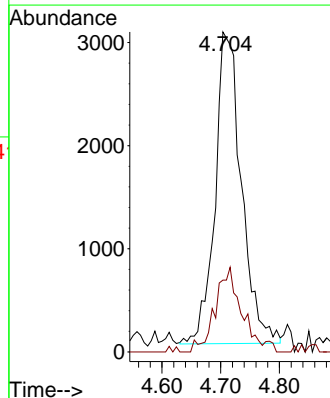
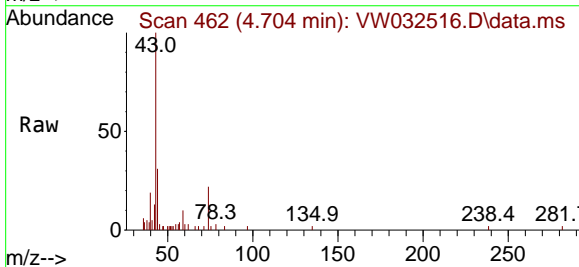
Instrument :
 MSVOA_W
 ClientSampleId :

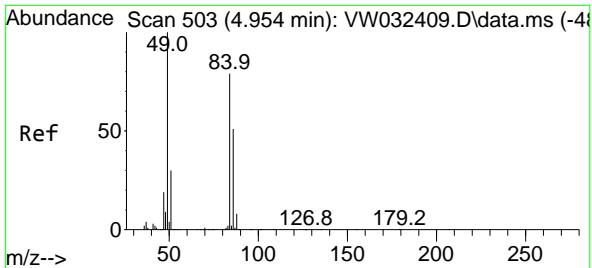
Tgt Ion: 43 Resp: 3813
 Ion Ratio Lower Upper
 43 100
 58 17.7 24.8 37.2#



#18
 Methyl Acetate
 Concen: 4.569 ug/l
 RT: 4.704 min Scan# 462
 Delta R.T. -0.006 min
 Lab File: VW032516.D
 Acq: 20 Nov 2025 11:53

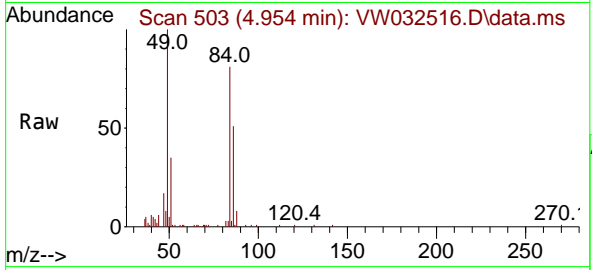
Tgt Ion: 43 Resp: 9423
 Ion Ratio Lower Upper
 43 100
 74 26.5 18.9 28.3





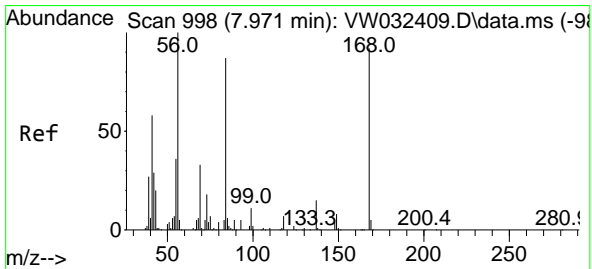
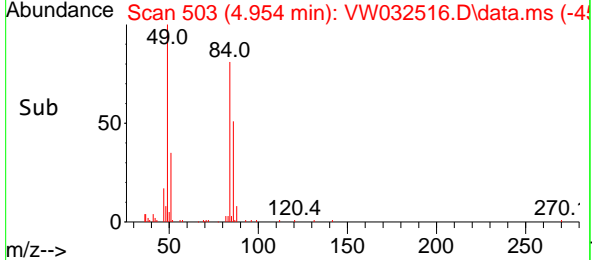
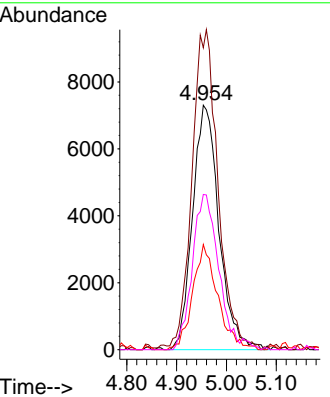
#20
 Methylene Chloride
 Concen: 9.034 ug/l
 RT: 4.954 min Scan# 503
 Delta R.T. 0.000 min
 Lab File: VW032516.D
 Acq: 20 Nov 2025 11:53

Instrument : MSVOA_W
 ClientSampleId :

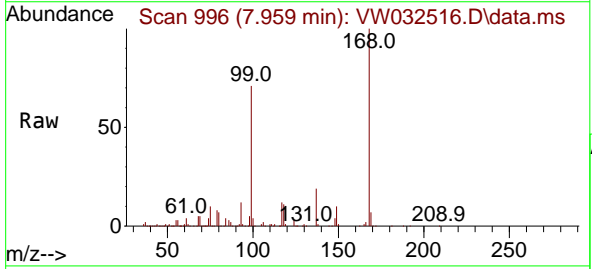


Tgt Ion: 84 Resp: 26907

Ion	Ratio	Lower	Upper
84	100		
49	122.0	101.5	152.3
51	42.1	30.6	46.0
86	63.5	51.9	77.9

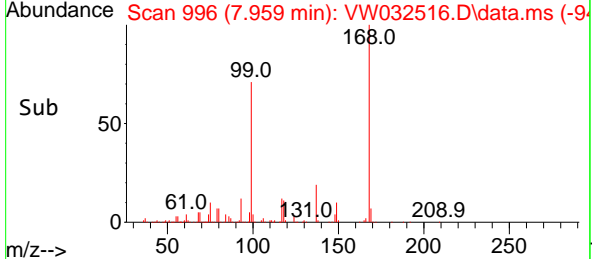
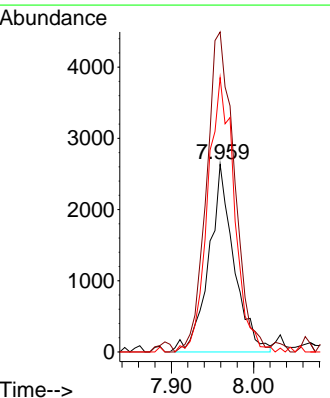


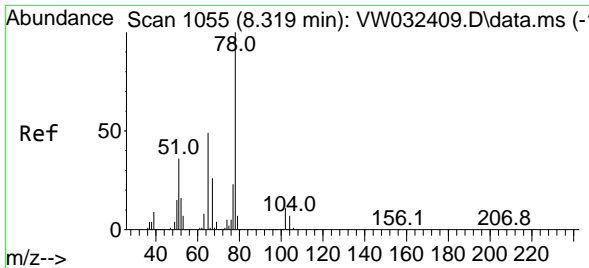
#31
 Cyclohexane
 Concen: 1.213 ug/l
 RT: 7.959 min Scan# 996
 Delta R.T. -0.012 min
 Lab File: VW032516.D
 Acq: 20 Nov 2025 11:53



Tgt Ion: 56 Resp: 5587

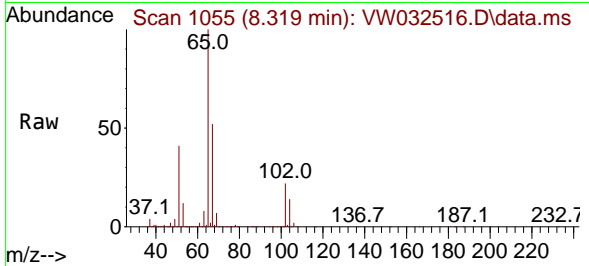
Ion	Ratio	Lower	Upper
56	100		
69	168.0	26.5	39.7#
84	146.3	69.6	104.4#



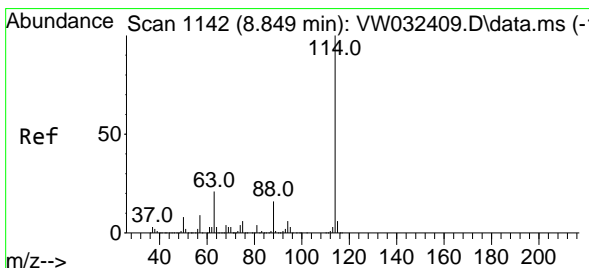
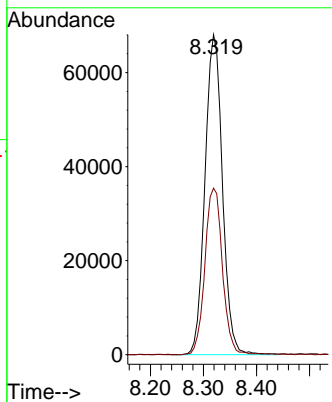
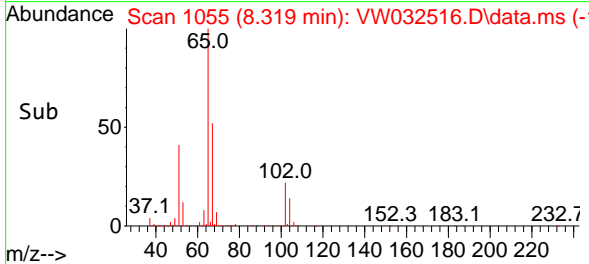


#33
 1,2-Dichloroethane-d4
 Concen: 55.920 ug/l
 RT: 8.319 min Scan# 1055
 Delta R.T. 0.000 min
 Lab File: VW032516.D
 Acq: 20 Nov 2025 11:53

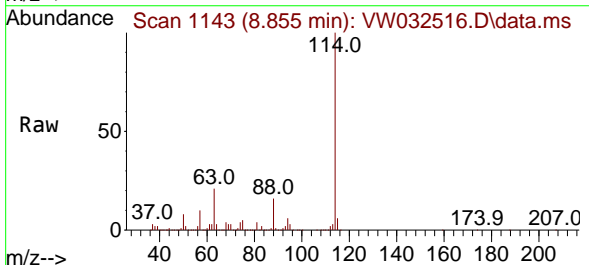
Instrument : MSVOA_W
 ClientSampleId :



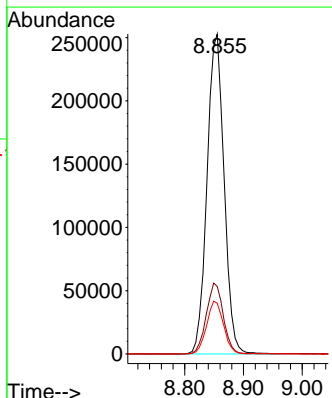
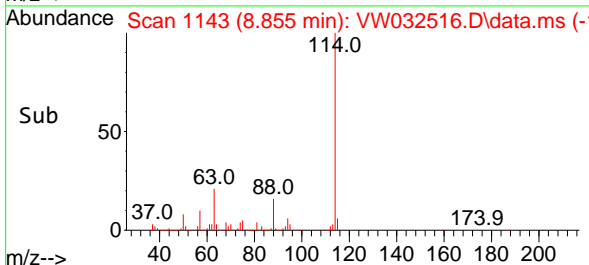
Tgt Ion: 65 Resp: 155664
 Ion Ratio Lower Upper
 65 100
 67 52.4 0.0 106.8

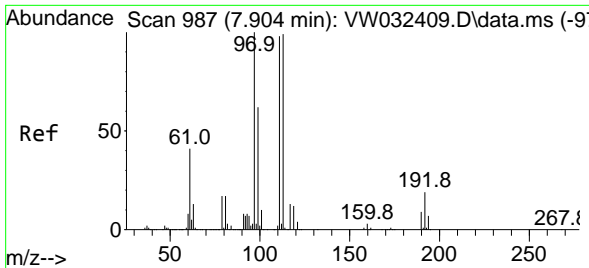


#34
 1,4-Difluorobenzene
 Concen: 50.000 ug/l
 RT: 8.855 min Scan# 1143
 Delta R.T. 0.006 min
 Lab File: VW032516.D
 Acq: 20 Nov 2025 11:53



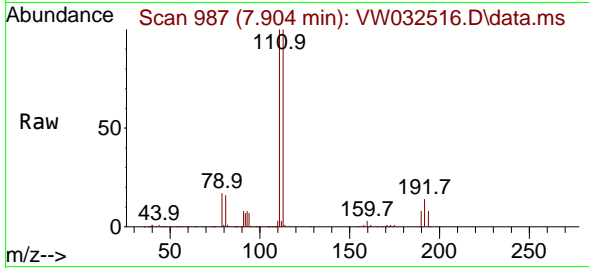
Tgt Ion: 114 Resp: 508481
 Ion Ratio Lower Upper
 114 100
 63 21.1 0.0 41.8
 88 15.8 0.0 32.6



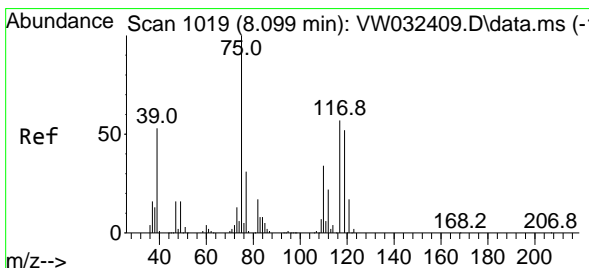
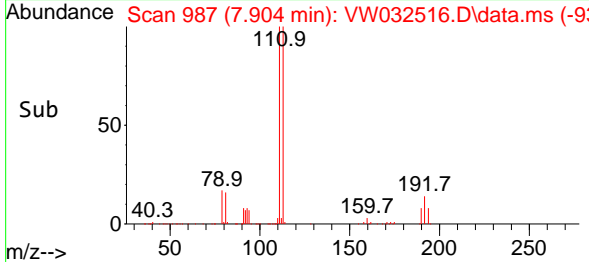
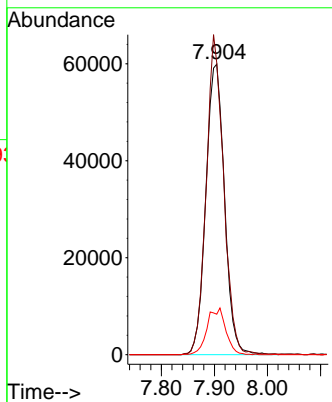


#35
 Dibromofluoromethane
 Concen: 48.128 ug/l
 RT: 7.904 min Scan# 995
 Delta R.T. 0.000 min
 Lab File: VW032516.D
 Acq: 20 Nov 2025 11:53

Instrument :
 MSVOA_W
 ClientSampleId :

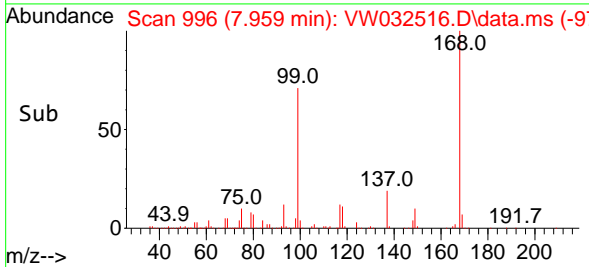
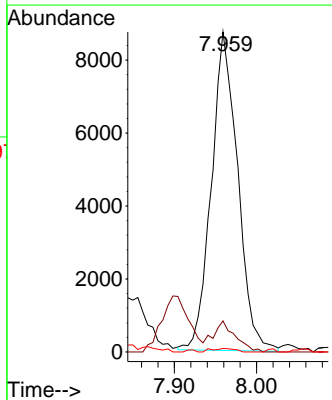
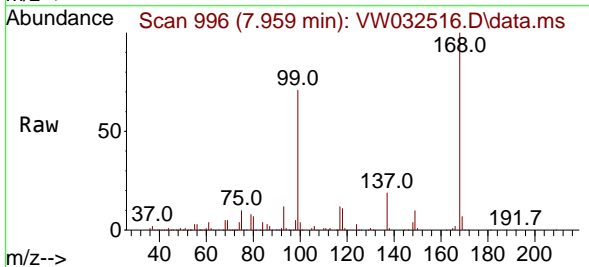


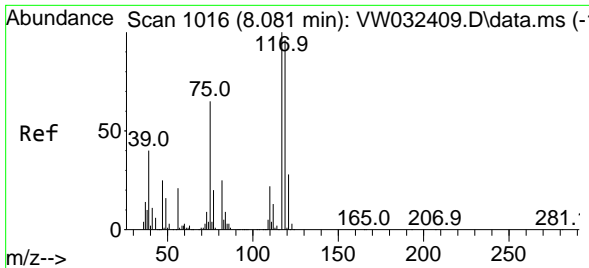
Tgt Ion:113 Resp: 146522
 Ion Ratio Lower Upper
 113 100
 111 102.8 83.1 124.7
 192 16.1 13.4 20.2



#36
 1,1-Dichloropropene
 Concen: 4.329 ug/l
 RT: 7.959 min Scan# 996
 Delta R.T. -0.140 min
 Lab File: VW032516.D
 Acq: 20 Nov 2025 11:53

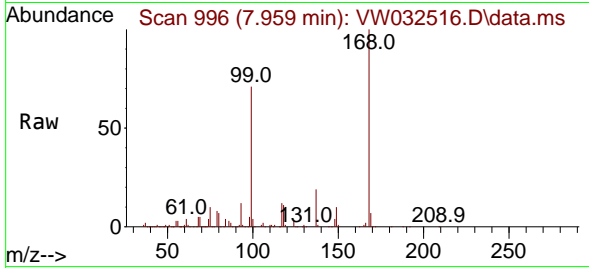
Tgt Ion: 75 Resp: 19417
 Ion Ratio Lower Upper
 75 100
 110 8.2 17.2 51.5#
 77 1.0 24.5 36.7#



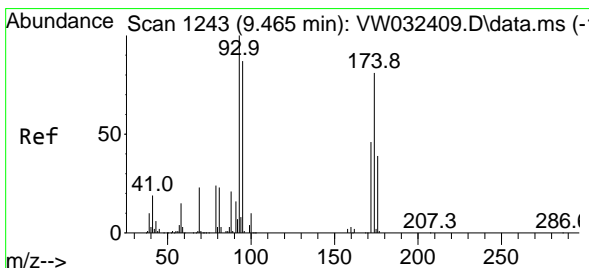
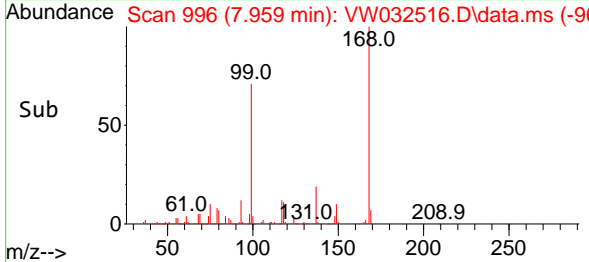
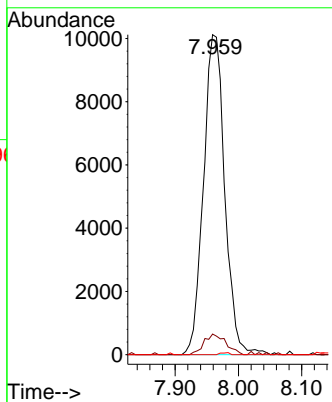


#38
 Carbon Tetrachloride
 Concen: 5.948 ug/l
 RT: 7.959 min Scan# 996
 Delta R.T. -0.122 min
 Lab File: VW032516.D
 Acq: 20 Nov 2025 11:53

Instrument : MSVOA_W
 ClientSampleId :

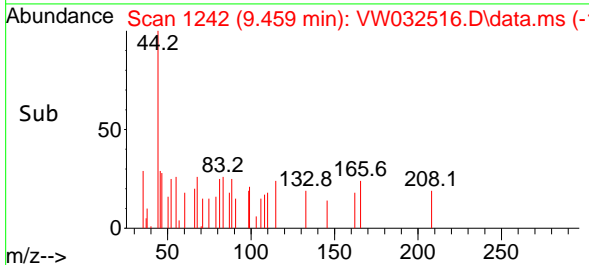
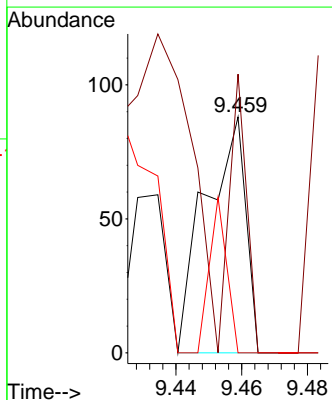
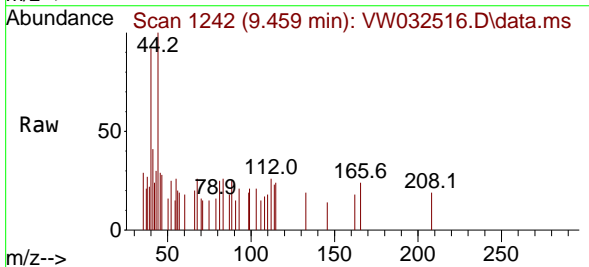


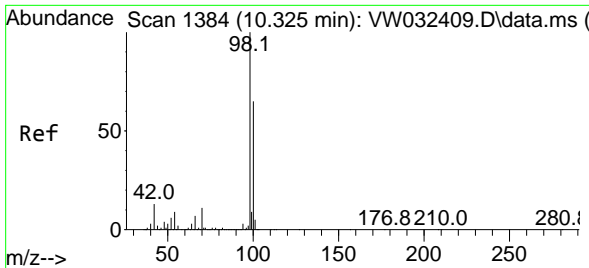
Tgt Ion: 117 Resp: 23708
 Ion Ratio Lower Upper
 117 100
 119 6.4 77.0 115.4#
 121 0.0 22.0 33.0#



#49
 1,4-Dioxane
 Concen: 2.547 ug/l
 RT: 9.459 min Scan# 1242
 Delta R.T. -0.006 min
 Lab File: VW032516.D
 Acq: 20 Nov 2025 11:53

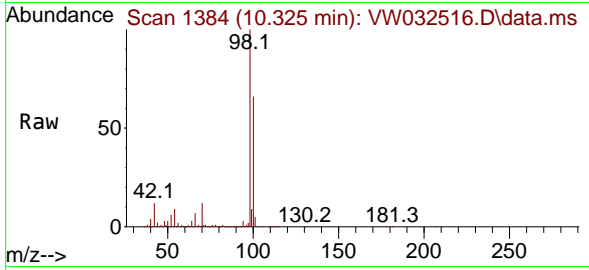
Tgt Ion: 88 Resp: 75
 Ion Ratio Lower Upper
 88 100
 43 0.0 0.0 0.0
 58 28.0 63.0 94.4#



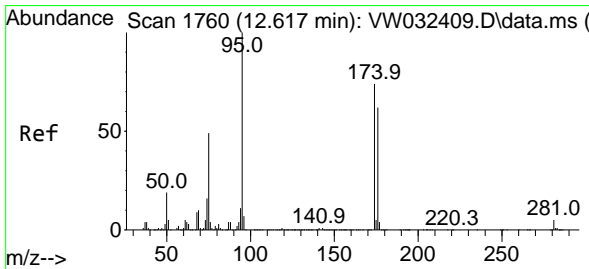
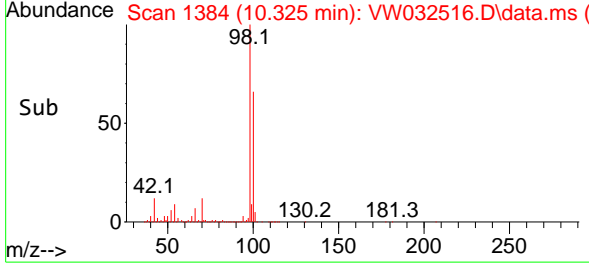
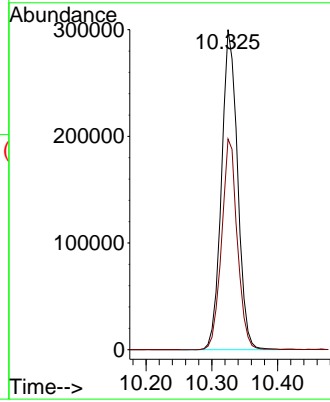


#50
 Toluene-d8
 Concen: 43.674 ug/l
 RT: 10.325 min Scan# 11
 Delta R.T. 0.000 min
 Lab File: VW032516.D
 Acq: 20 Nov 2025 11:53

Instrument :
 MSVOA_W
 ClientSampleId :

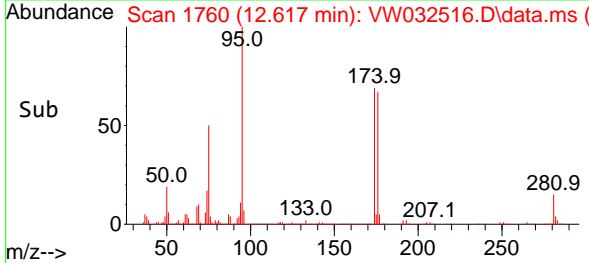
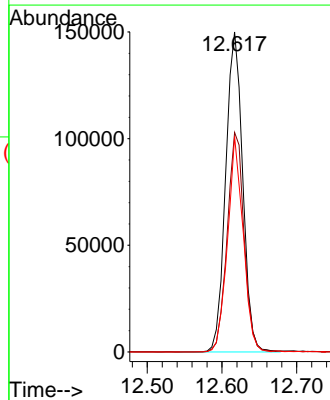
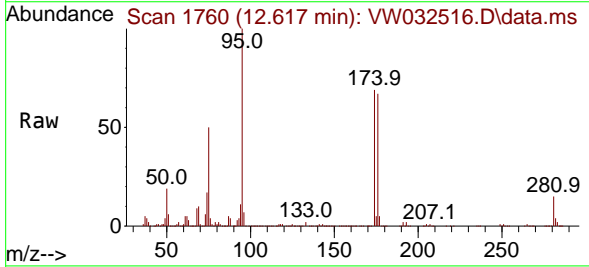


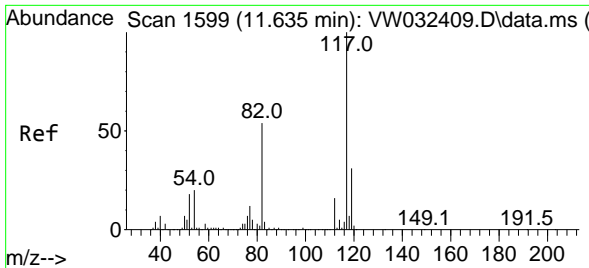
Tgt Ion: 98 Resp: 510080
 Ion Ratio Lower Upper
 98 100
 100 64.4 53.3 79.9



#62
 4-Bromofluorobenzene
 Concen: 53.900 ug/l
 RT: 12.617 min Scan# 1760
 Delta R.T. 0.000 min
 Lab File: VW032516.D
 Acq: 20 Nov 2025 11:53

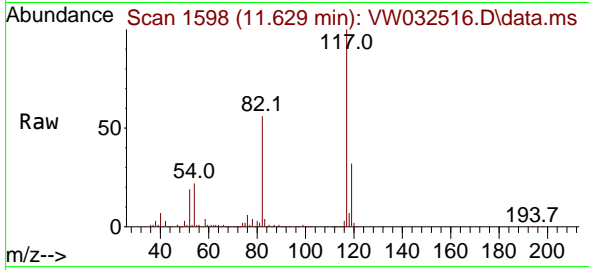
Tgt Ion: 95 Resp: 237804
 Ion Ratio Lower Upper
 95 100
 174 68.4 0.0 135.4
 176 61.9 0.0 131.8





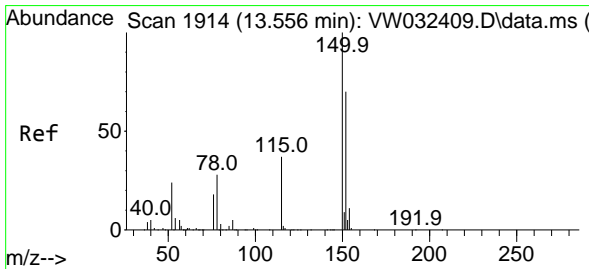
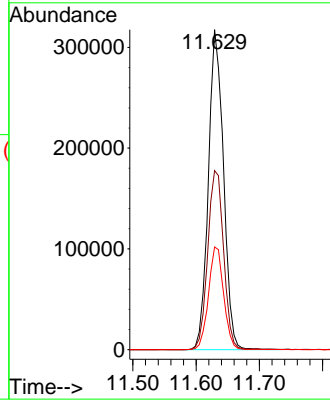
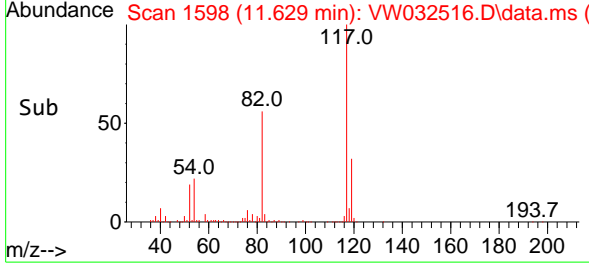
#63
 Chlorobenzene-d5
 Concen: 50.000 ug/l
 RT: 11.629 min Scan# 11
 Delta R.T. -0.006 min
 Lab File: VW032516.D
 Acq: 20 Nov 2025 11:53

Instrument :
 MSVOA_W
 ClientSampleId :

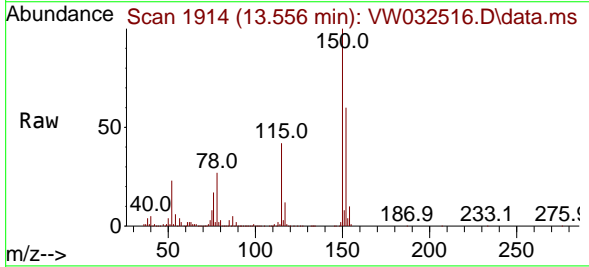


Tgt Ion:117 Resp: 528162

Ion	Ratio	Lower	Upper
117	100		
82	55.9	43.0	64.4
119	32.1	25.0	37.6

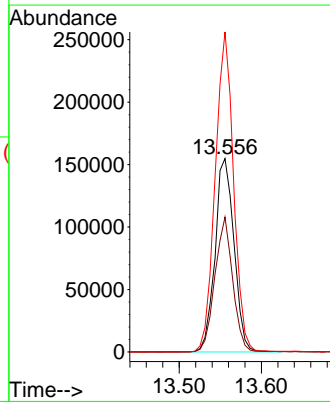
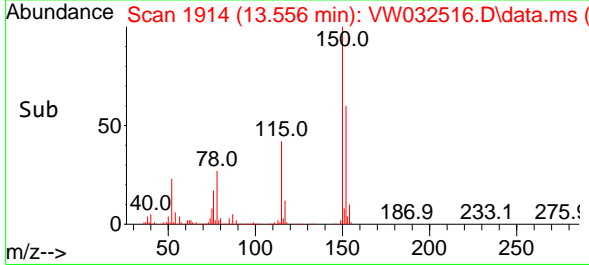


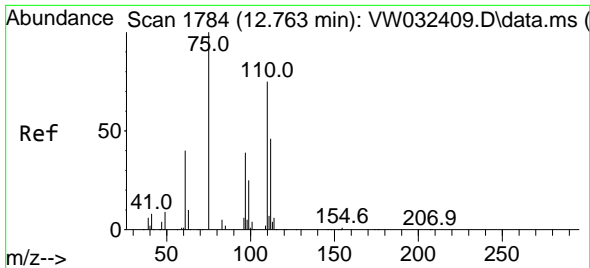
#72
 1,4-Dichlorobenzene-d4
 Concen: 50.000 ug/l
 RT: 13.556 min Scan# 1914
 Delta R.T. 0.000 min
 Lab File: VW032516.D
 Acq: 20 Nov 2025 11:53



Tgt Ion:152 Resp: 248446

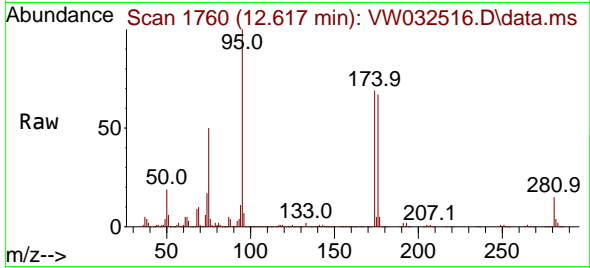
Ion	Ratio	Lower	Upper
152	100		
115	65.5	32.8	98.3
150	160.1	0.0	356.6



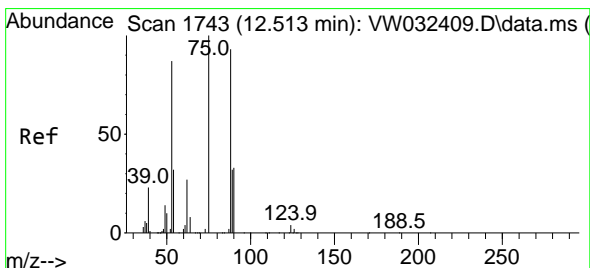
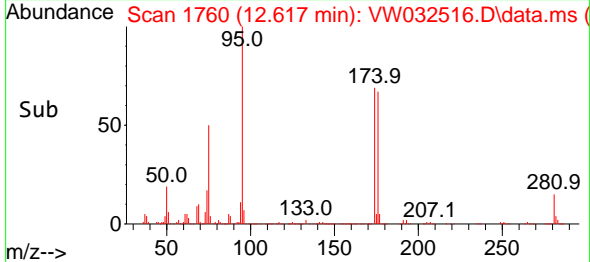
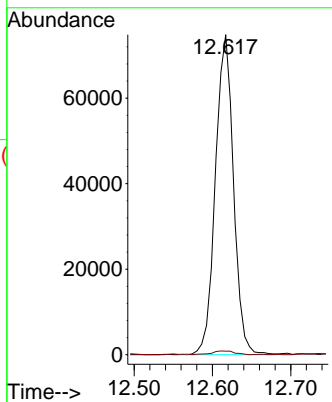


#76
 1,2,3-Trichloropropane
 Concen: 35.338 ug/l
 RT: 12.617 min Scan# 1760
 Delta R.T. -0.146 min
 Lab File: VW032516.D
 Acq: 20 Nov 2025 11:53

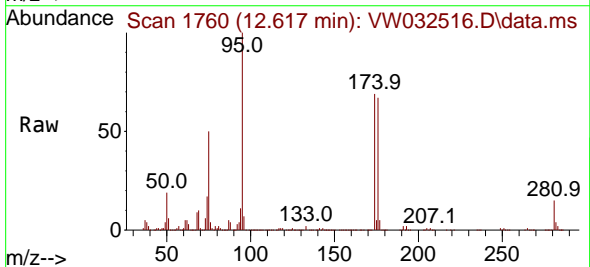
Instrument :
 MSVOA_W
 ClientSampleId :



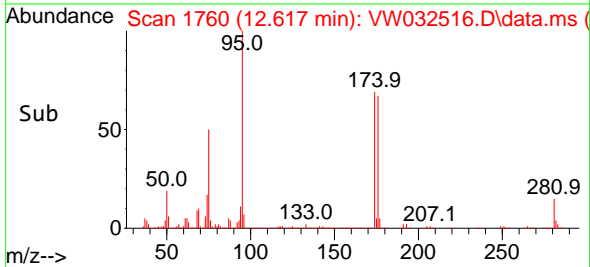
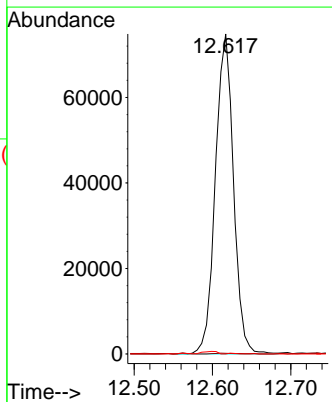
Tgt Ion: 75 Resp: 120384
 Ion Ratio Lower Upper
 75 100
 77 1.4 151.6 454.8#

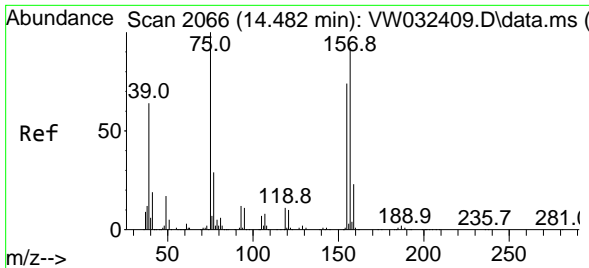


#81
 trans-1,4-Dichloro-2-butene
 Concen: 80.941 ug/l
 RT: 12.617 min Scan# 1760
 Delta R.T. 0.104 min
 Lab File: VW032516.D
 Acq: 20 Nov 2025 11:53



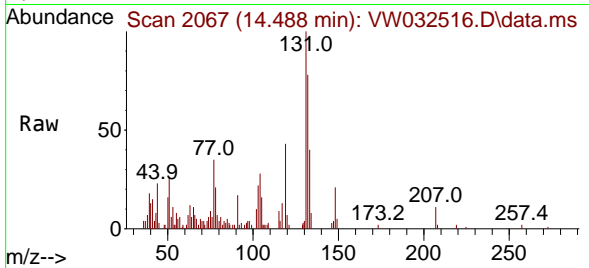
Tgt Ion: 75 Resp: 120384
 Ion Ratio Lower Upper
 75 100
 53 0.3 77.8 116.8#
 89 0.1 35.6 53.4#



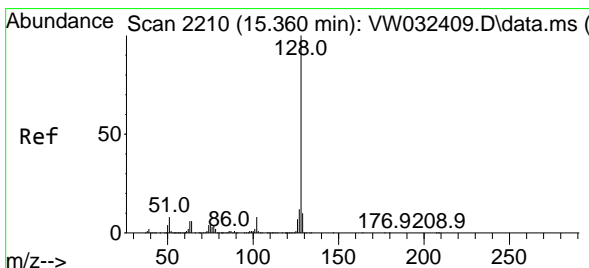
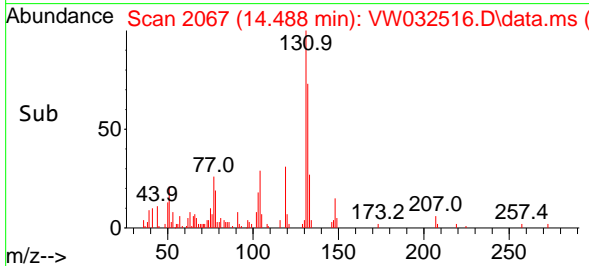
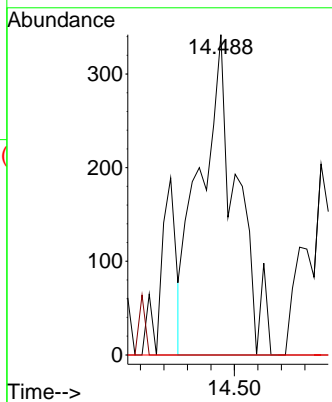


#92
 1,2-Dibromo-3-Chloropropane
 Concen: 1.001 ug/l
 RT: 14.488 min Scan# 2066
 Delta R.T. 0.006 min
 Lab File: VW032516.D
 Acq: 20 Nov 2025 11:53

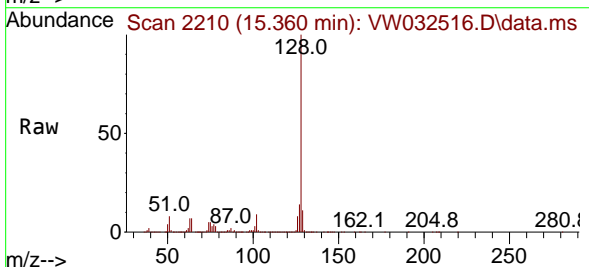
Instrument : MSVOA_W
 ClientSampleId :



Tgt Ion	Resp	Lower	Upper
75	100		
155	0.0	36.2	108.6#
157	0.0	47.8	143.3#



#95
 Naphthalene
 Concen: 168.735 ug/l
 RT: 15.360 min Scan# 2210
 Delta R.T. 0.000 min
 Lab File: VW032516.D
 Acq: 20 Nov 2025 11:53



Tgt Ion	Resp	Lower	Upper
128	100		
127	13.0	10.2	15.4
129	10.9	8.6	12.8

