

Data Path : Z:\voasrv\HPCHEM1\MSVOA_W\Data\VW112625\
 Data File : VW032555.D
 Acq On : 26 Nov 2025 19:23
 Operator : SY/MD
 Sample : Q3719-14
 Misc : 4.27g/5mL/MSVOA_W/SOIL/A
 ALS Vial : 21 Sample Multiplier: 1

Instrument :
 MSVOA_W
 ClientSampleId :
 SB-1125-17B

Integration Parameters: RTEINT.P
 Integrator: RTE
 Smoothing : ON Filtering: 5
 Sampling : 1 Min Area: 3 % of largest Peak
 Start Thrs: 0.2 Max Peaks: 100
 Stop Thrs : 0 Peak Location: TOP

If leading or trailing edge < 100 prefer < Baseline drop else tangent >
 Peak separation: 5

Method : Z:\voasrv\HPCHEM1\MSVOA_W\Method\82W111025S.M
 Title : SW846 8260

Signal : TIC: VW032555.D\data.ms

peak #	R.T. min	first scan	max scan	last scan	PK TY	peak height	corr. area	corr. % max.	% of total
1	4.161	365	373	382	rVB2	30532	85935	4.19%	0.799%
2	4.960	494	504	515	rVB2	14776	50135	2.45%	0.466%
3	5.965	660	669	679	rBV4	13190	42430	2.07%	0.394%
4	7.166	857	866	879	rBV2	32605	126882	6.19%	1.179%
5	7.898	973	986	991	rBV2	211493	517309	25.25%	4.808%
6	7.959	991	996	1008	rVB	317463	719510	35.11%	6.687%
7	8.264	1037	1046	1049	rBV2	25539	62170	3.03%	0.578%
8	8.319	1049	1055	1066	rVB	208815	476634	23.26%	4.430%
9	8.849	1133	1142	1153	rBV	661823	1334762	65.14%	12.406%
10	10.324	1377	1384	1394	rBV	883561	1558639	76.07%	14.486%
11	10.702	1441	1446	1453	rVB	66366	123704	6.04%	1.150%
12	11.062	1501	1505	1519	rVB3	78977	182984	8.93%	1.701%
13	11.629	1592	1598	1607	rVB	1171007	2018345	98.50%	18.759%
14	12.617	1753	1760	1770	rVB	811813	1410803	68.85%	13.112%
15	13.556	1908	1914	1928	rVB	1219467	2049022	100.00%	19.044%

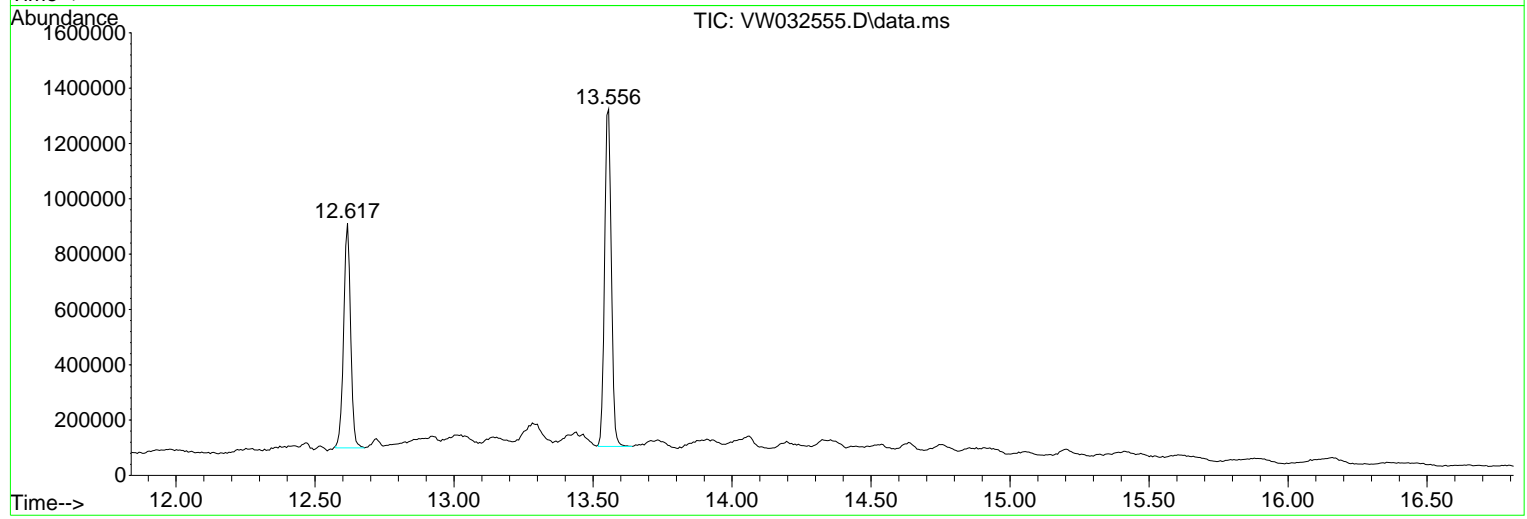
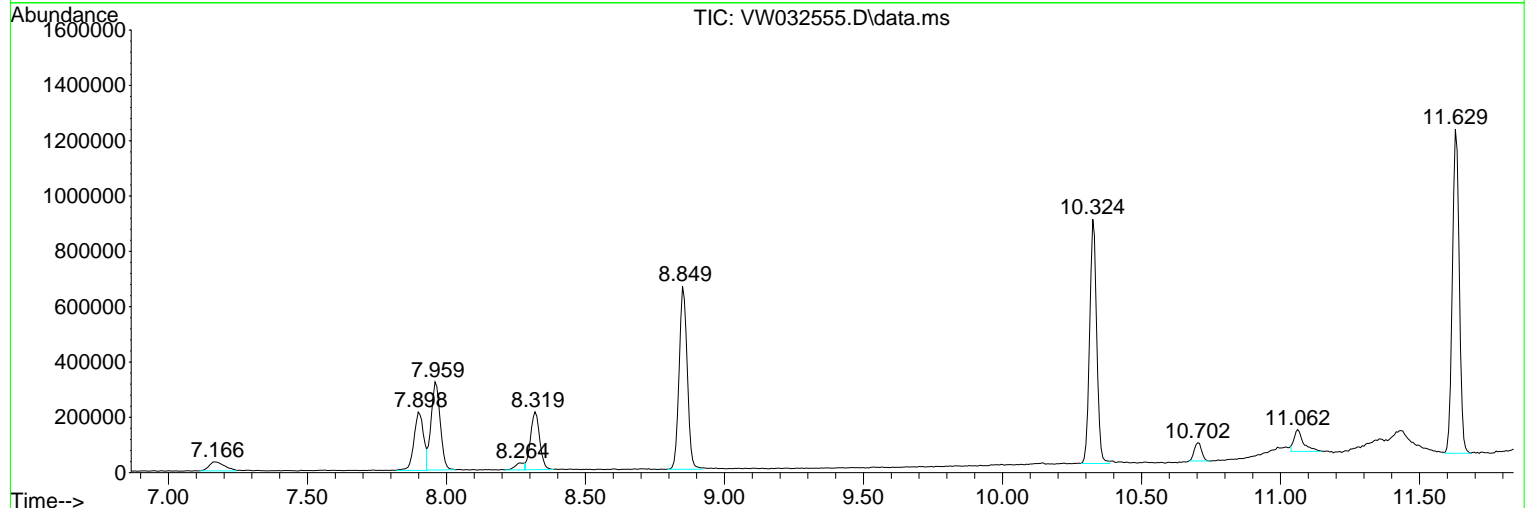
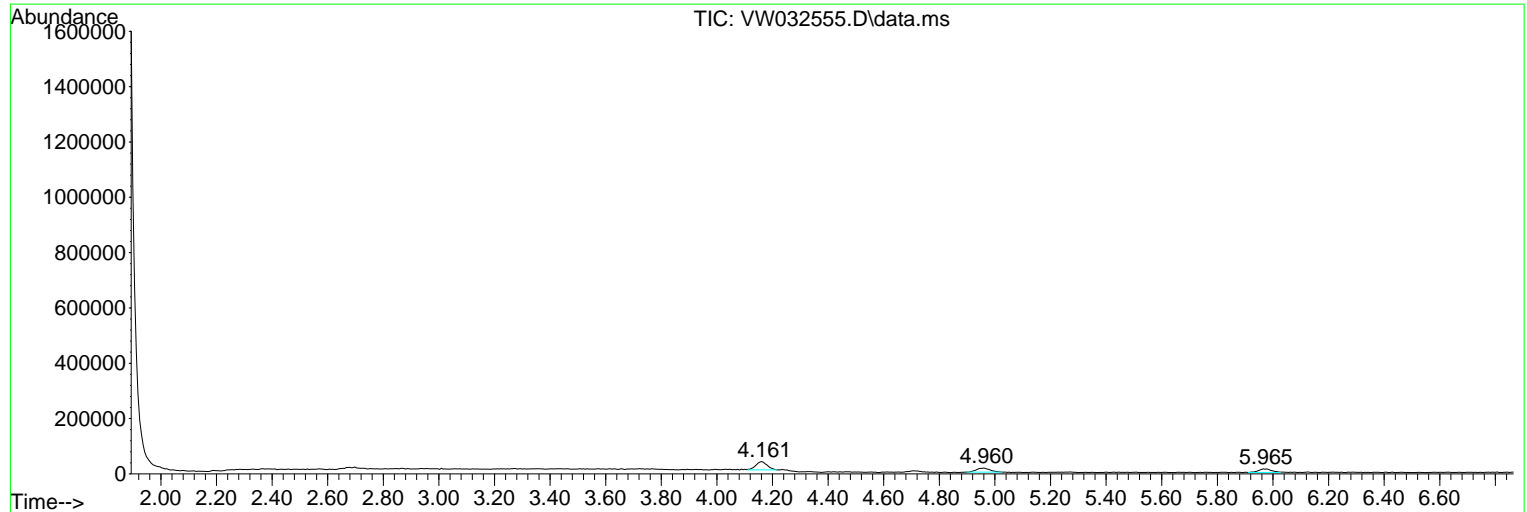
Sum of corrected areas: 10759264

Data Path : Z:\voasrv\HPCHEM1\MSVOA_W\Data\VW112625\
 Data File : VW032555.D
 Acq On : 26 Nov 2025 19:23
 Operator : SY/MD
 Sample : Q3719-14
 Misc : 4.27g/5mL/MSVOA_W/SOIL/A
 ALS Vial : 21 Sample Multiplier: 1

Instrument :
 MSVOA_W
ClientSampleId :
 SB-1125-17B

Quant Method : Z:\voasrv\HPCHEM1\MSVOA_W\Method\82W111025S.M
 Quant Title : SW846 8260

TIC Library : C:\Database\NIST20.L
 TIC Integration Parameters: LSCINT.P



Library Search Compound Report

Data Path : Z:\voasrv\HPCHEM1\MSVOA_W\Data\VW112625\
Data File : VW032555.D
Acq On : 26 Nov 2025 19:23
Operator : SY/MD
Sample : Q3719-14
Misc : 4.27g/5mL/MSVOA_W/SOIL/A
ALS Vial : 21 Sample Multiplier: 1

Instrument :
MSVOA_W
ClientSampleId :
SB-1125-17B

Quant Method : Z:\voasrv\HPCHEM1\MSVOA_W\Method\82W111025S.M
Quant Title : SW846 8260

TIC Library : C:\Database\NIST20.L
TIC Integration Parameters: LSCINT.P

No Library Search Compounds Detected

Data Path : Z:\voasrv\HPCHEM1\MSVOA_W\Data\VW112625\
Data File : VW032555.D
Acq On : 26 Nov 2025 19:23
Operator : SY/MD
Sample : Q3719-14
Misc : 4.27g/5mL/MSVOA_W/SOIL/A
ALS Vial : 21 Sample Multiplier: 1

Instrument :
MSVOA_W
ClientSampleId :
SB-1125-17B

Quant Method : Z:\voasrv\HPCHEM1\MSVOA_W\Method\82W111025S.M
Quant Title : SW846 8260

TIC Library : C:\Database\NIST0.L
TIC Integration Parameters: LSCINT.P

TIC Top Hit name	RT	EstConc	Units	Response	--Internal Standard--			
					#	RT	Resp	Conc
