

Data Path : Z:\VOASRV\HPCHEM1\MSVOA W\DATA\VW120519\
 Data File : VW014220.D
 Acq On : 05 Dec 2019 18:23
 Operator : SY/VA
 Sample : K6149-03MS
 Misc : 4.48G/10ML/MSVOA W/SOIL
 ALS Vial : 1 Sample Multiplier: 1

Instrument :
 MSVOA_W
ClientSampled :
 DBBL1MS

Manual Integrations
APPROVED
 apatel
 12/6/2019 2:55:43 PM

Quant Time: Dec 06 07:18:18 2019
 Quant Method : Z:\VOASRV\HPCHEM1\MSVOA_W\METHOD\SOM2WLM120519S.M
 Quant Title : VOC Analysis
 QLast Update : Fri Dec 06 06:50:50 2019
 Response via : Initial Calibration

Internal Standards	R.T.	QIon	Response	Conc	Units	Dev(Min)
1) 1,4-Difluorobenzene	8.84	114	1378659	25.00	ug/L	0.00
28) Chlorobenzene-d5	11.63	117	1211753	25.00	ug/L	0.00
60) 1,4-Dichlorobenzene-d4	13.55	152	537308	25.00	ug/L	0.00

System Monitoring Compounds

4) Vinyl Chloride-d3	2.35	65	498575	23.88	ug/L	0.00
Spiked Amount	25.000	Range	30 - 150	Recovery	=	95.52%
7) Chloroethane-d5	2.89	69	362971	23.38	ug/L	0.00
Spiked Amount	25.000	Range	30 - 150	Recovery	=	93.52%
10) 1,1-Dichloroethene-d2	4.02	63	880309	23.87	ug/L	0.00
Spiked Amount	25.000	Range	45 - 110	Recovery	=	95.48%
20) 2-Butanone-d5	7.07	46	205983	37.86	ug/L	0.00
Spiked Amount	50.000	Range	20 - 135	Recovery	=	75.72%
24) Chloroform-d	7.64	84	804787	22.93	ug/L	0.00
Spiked Amount	25.000	Range	40 - 150	Recovery	=	91.72%
26) 1,2-Dichloroethane-d4	8.30	65	411365	22.35	ug/L	0.00
Spiked Amount	25.000	Range	70 - 130	Recovery	=	89.40%
29) Benzene-d6	8.27	84	1777368	25.03	ug/L	0.00
Spiked Amount	25.000	Range	20 - 135	Recovery	=	100.12%
33) 1,2-Dichloropropane-d6	9.27	67	533451	24.41	ug/L	0.00
Spiked Amount	25.000	Range	70 - 120	Recovery	=	97.64%
37) Toluene-d8	10.32	98	1583335	24.66	ug/L	0.00
Spiked Amount	25.000	Range	30 - 130	Recovery	=	98.64%
38) trans-1,3-Dichloropropene-	10.57	79	206569	22.53	ug/L	0.00
Spiked Amount	25.000	Range	30 - 135	Recovery	=	90.12%
39) 2-Hexanone-d5	10.92	63	162268	37.35	ug/L	0.00
Spiked Amount	50.000	Range	20 - 135	Recovery	=	74.70%
48) 1,1,2,2-Tetrachloroethane-	12.69	84	359441	20.19	ug/L	0.00
Spiked Amount	25.000	Range	45 - 120	Recovery	=	80.76%
61) 1,2-Dichlorobenzene-d4	13.85	152	486489	23.69	ug/L	0.00
Spiked Amount	25.000	Range	75 - 120	Recovery	=	94.76%

Target Compounds

Target Compounds	R.T.	QIon	Response	Conc	Units	Ovalue
12) 1,1-Dichloroethene	4.04	96	419880	22.807	ug/L	83
13) Acetone	4.12	43	62538	11.923	ug/L	98
16) Methylene chloride	4.92	84	39620	1.875	ug/L	92
21) 2-Butanone	7.18	43	17457m	2.479	ug/L	
34) Benzene	8.32	78	1911935	24.919	ug/L	100
35) Trichloroethene	9.09	95	478278	24.363	ug/L	96
44) Toluene	10.38	91	2019910	25.111	ug/L	98
52) Chlorobenzene	11.65	112	1250576	24.055	ug/L	95

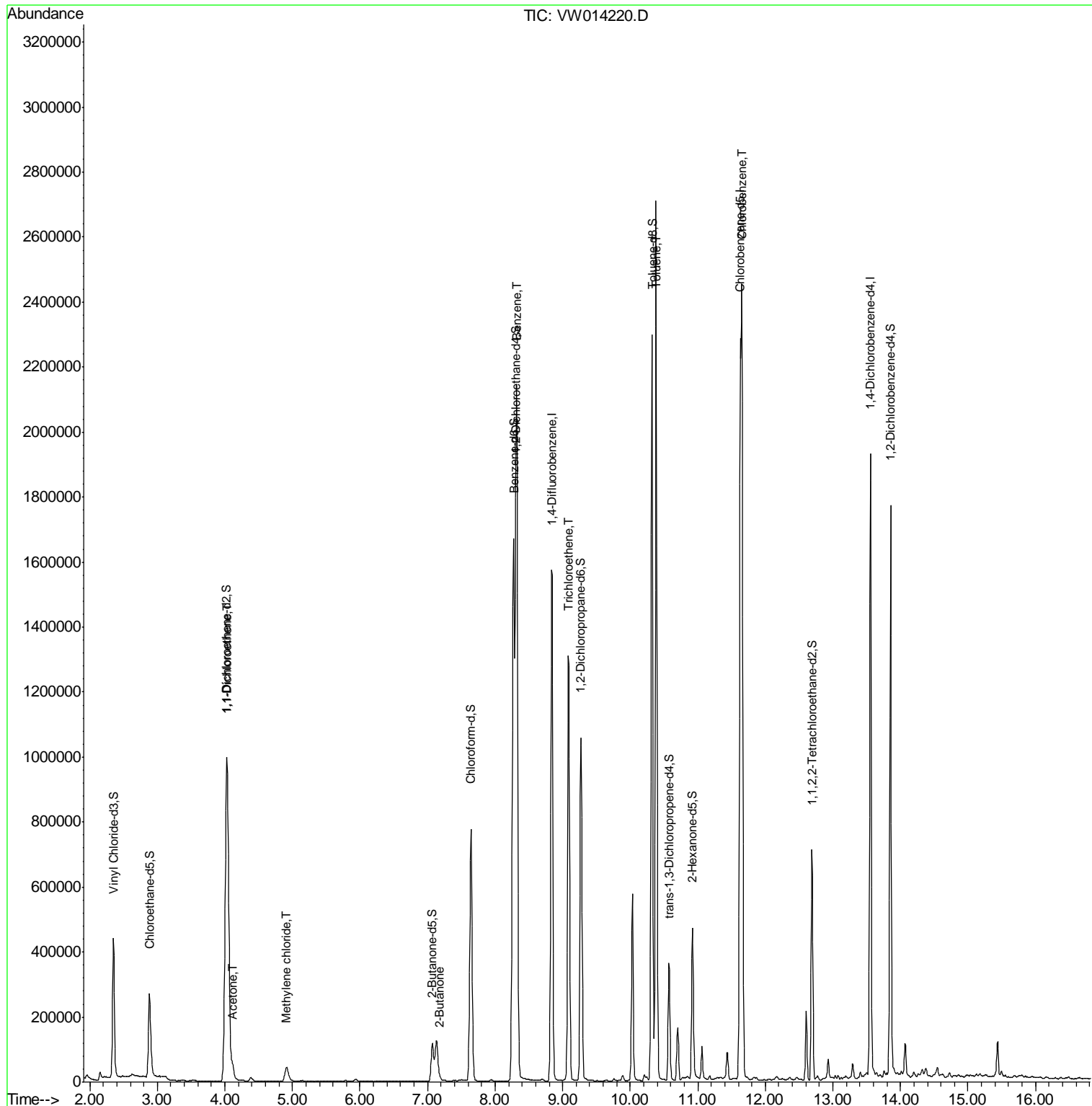
(#) = qualifier out of range (m) = manual integration (+) = signals summed

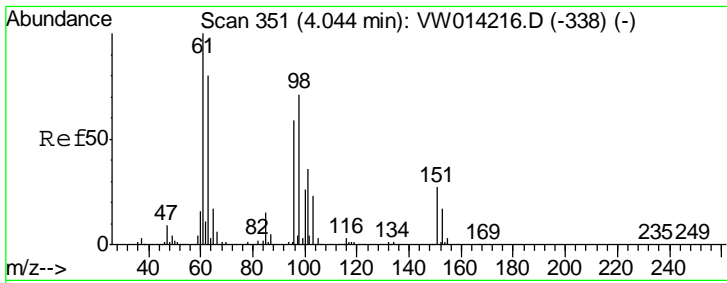
Data Path : Z:\VOASRV\HPCHEM1\MSVOA W\DATA\VW120519\
 Data File : VW014220.D
 Acq On : 05 Dec 2019 18:23
 Operator : SY/VA
 Sample : K6149-03MS
 Misc : 4.48G/10ML/MSVOA W/SOIL
 ALS Vial : 1 Sample Multiplier: 1

Instrument :
 MSVOA_W
 Client Sampled :
 DBBL1MS

Manual Integrations
APPROVED
 apatel
 12/6/2019 2:55:43 PM

Quant Time: Dec 06 07:18:18 2019
 Quant Method : Z:\VOASRV\HPCHEM1\MSVOA_W\METHOD\SOM2WLM120519S.M
 Quant Title : VOC Analysis
 QLast Update : Fri Dec 06 06:50:50 2019
 Response via : Initial Calibration





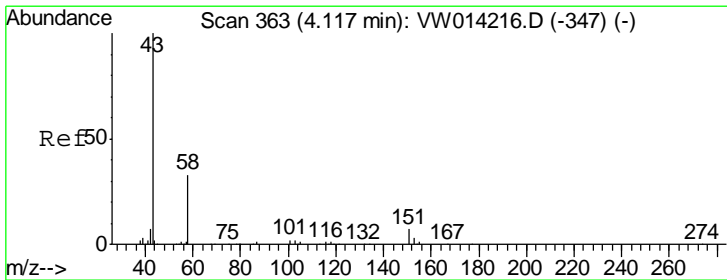
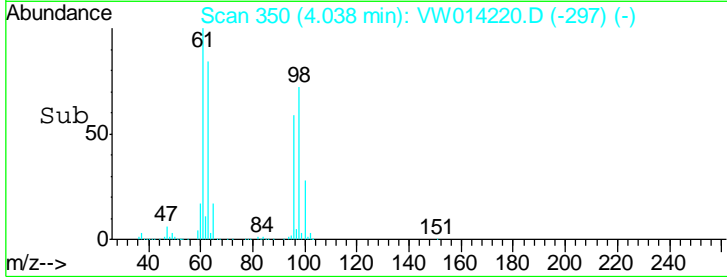
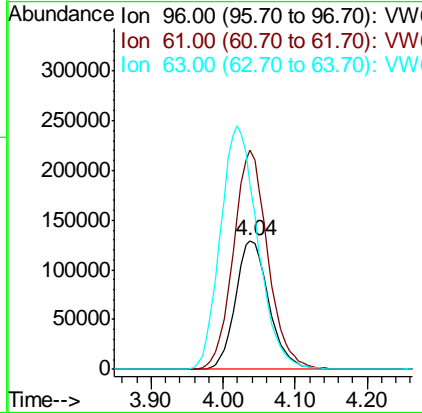
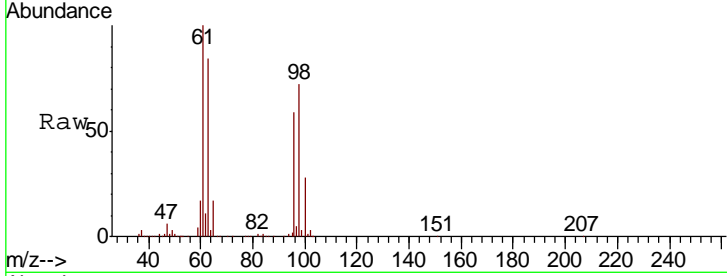
#12
 1,1-Dichloroethene
 Concen: 22.807 ug/L
 RT: 4.04 min Scan# 350
 Delta R.T. -0.01 min
 Lab File: VW014220.D
 Acq: 05 Dec 2019 18:23

Instrument : MSVOA_W
 Client Sampled : DBBL1MS

Tgt Ion	Resp	Lower	Upper
96	419880		
96	100		
61	170.3	109.8	204.0
63	143.1	80.7	149.9

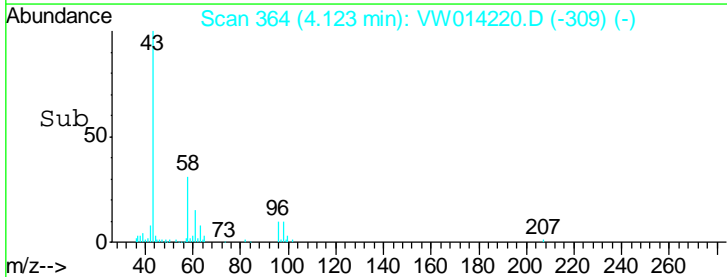
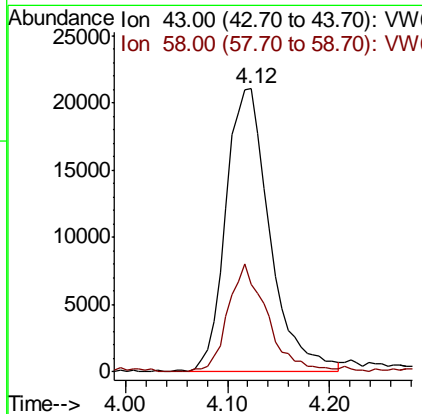
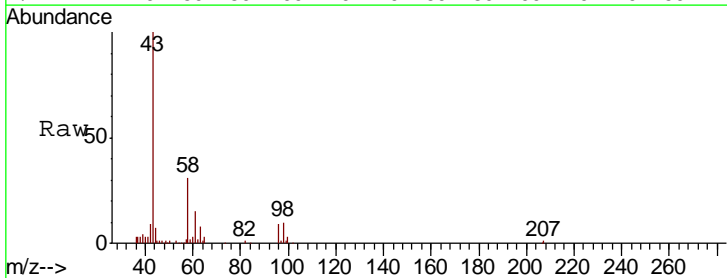
Manual Integrations
 APPROVED

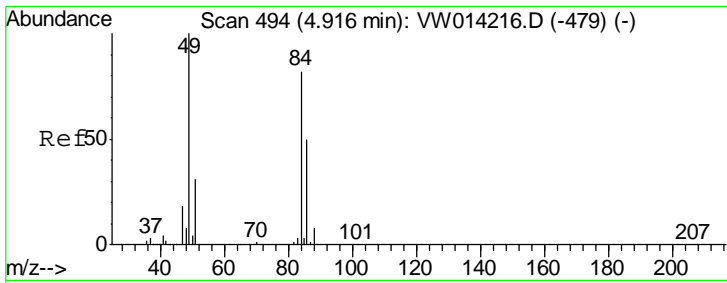
apatel
 12/6/2019 2:55:43 PM



#13
 Acetone
 Concen: 11.923 ug/L
 RT: 4.12 min Scan# 364
 Delta R.T. 0.01 min
 Lab File: VW014220.D
 Acq: 05 Dec 2019 18:23

Tgt Ion	Resp	Lower	Upper
43	62538		
43	100		
58	33.8	0.0	65.4





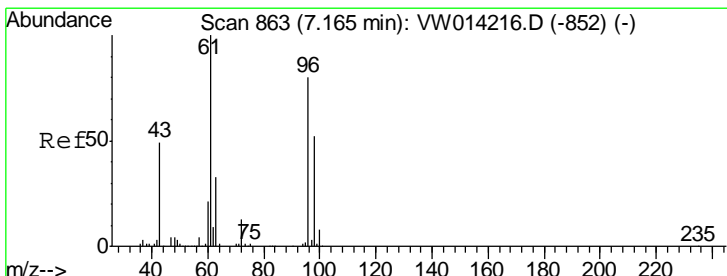
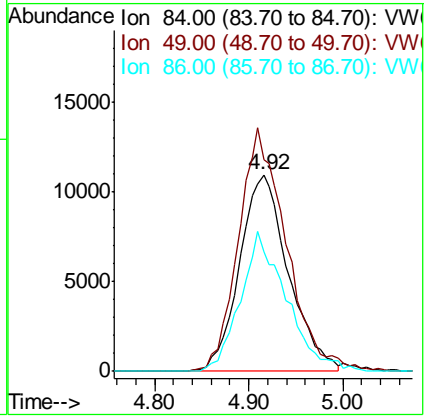
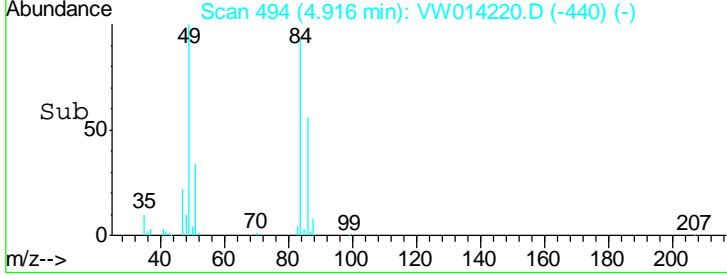
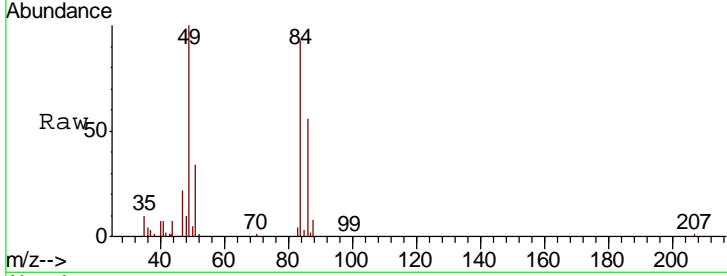
#16
 Methylene chloride
 Concen: 1.875 ug/L
 RT: 4.92 min Scan# 494
 Delta R.T. -0.00 min
 Lab File: VW014220.D
 Acq: 05 Dec 2019 18:23

Instrument :
 MSVOA_W
ClientSampled :
 DBBL1MS

Tgt Ion	Resp	Lower	Upper
84	100		
49	107.9	84.2	156.4
86	60.9	43.7	81.1

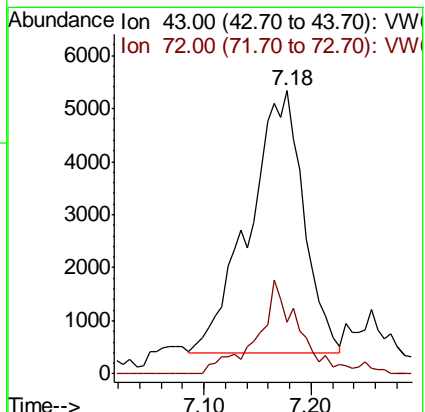
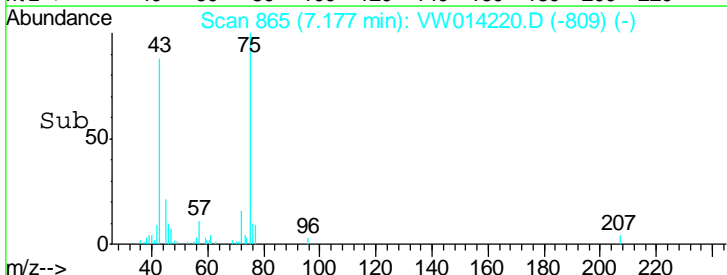
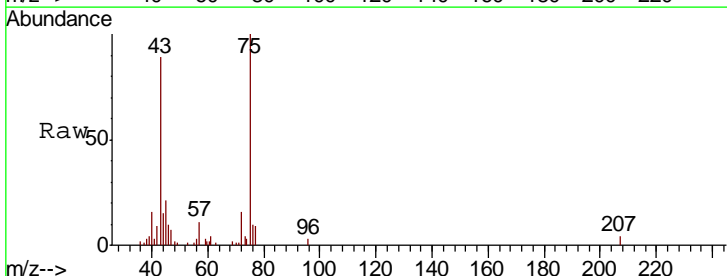
Manual Integrations
APPROVED

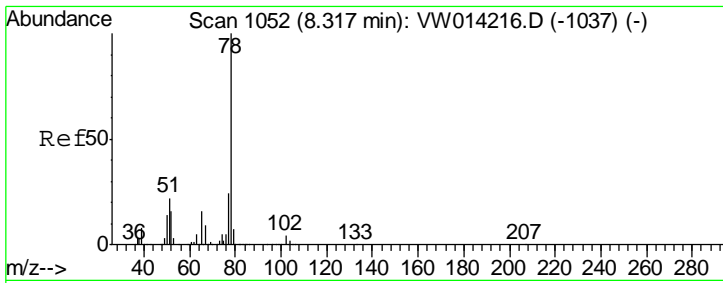
apatel
 12/6/2019 2:55:43 PM



#21
 2-Butanone
 Concen: 2.479 ug/L m
 RT: 7.18 min Scan# 865
 Delta R.T. 0.01 min
 Lab File: VW014220.D
 Acq: 05 Dec 2019 18:23

Tgt Ion	Resp	Lower	Upper
43	100		
72	3.4	14.1	42.2#

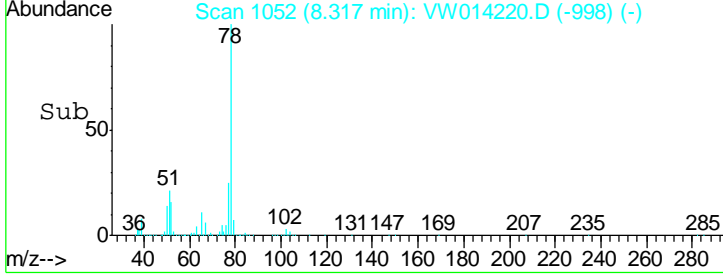
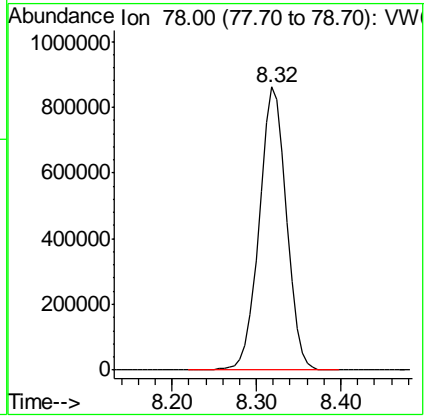
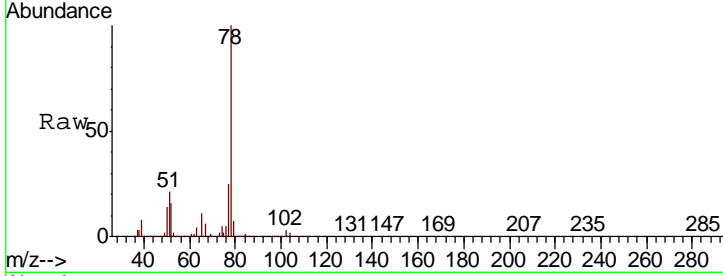




#34
 Benzene
 Concen: 24.919 ug/L
 RT: 8.32 min Scan# 1052
 Delta R.T. -0.00 min
 Lab File: VW014220.D
 Acq: 05 Dec 2019 18:23
 Tgt Ion: 78 Resp: 1911935

Instrument :
 MSVOA_W
 ClientSampled :
 DBBL1MS

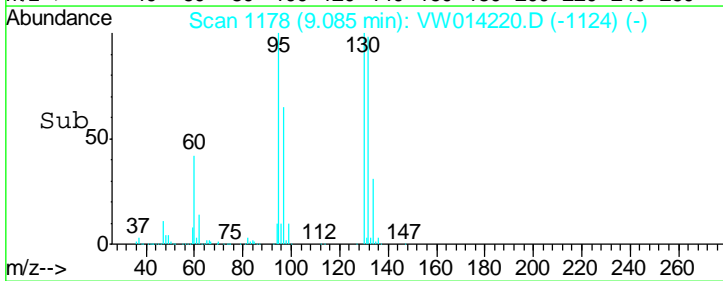
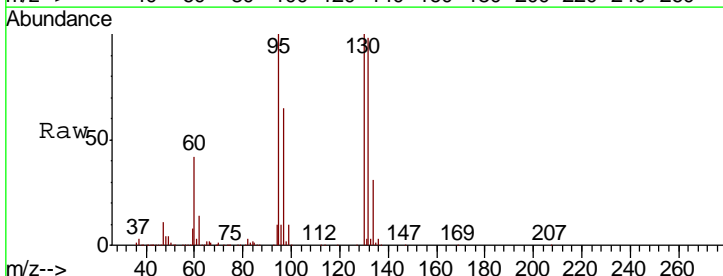
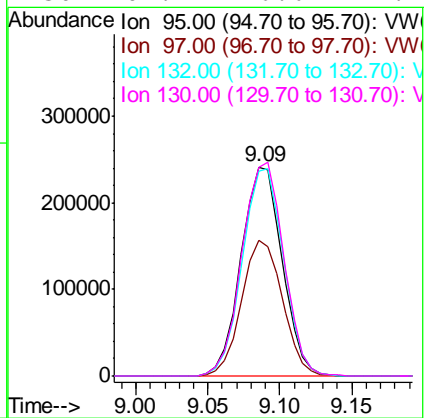
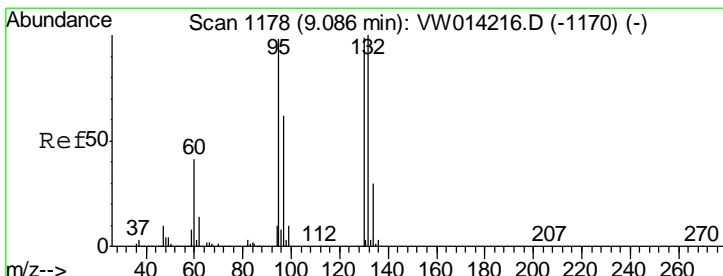
Manual Integrations
APPROVED
 apatel
 12/6/2019 2:55:43 PM

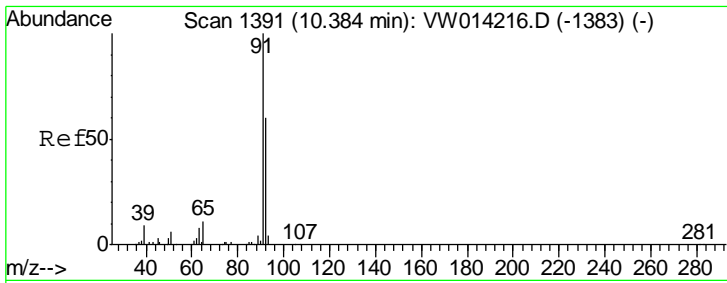


#35
 Trichloroethene
 Concen: 24.363 ug/L
 RT: 9.09 min Scan# 1178
 Delta R.T. -0.00 min
 Lab File: VW014220.D
 Acq: 05 Dec 2019 18:23

Tgt Ion: 95 Resp: 478278

Ion	Ratio	Lower	Upper
95	100		
97	64.3	45.1	83.9
132	99.6	73.7	136.9
130	104.1	76.6	142.2





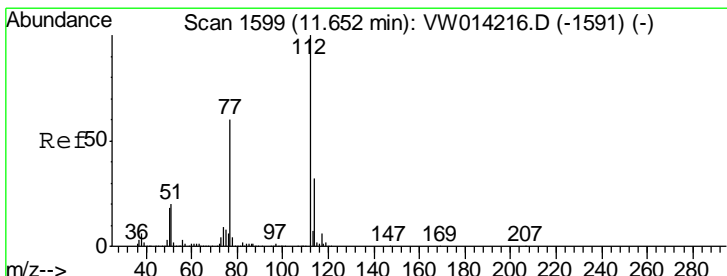
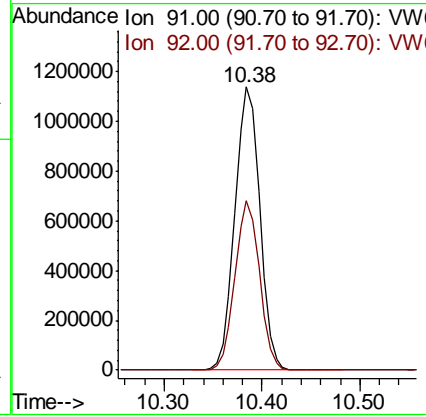
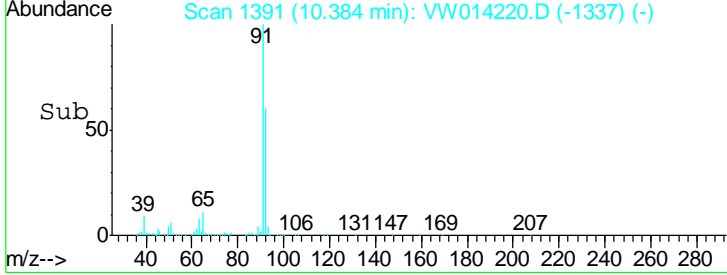
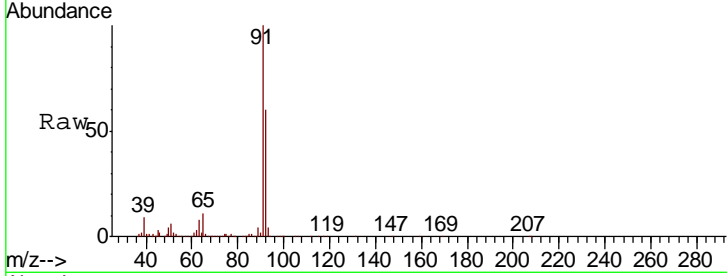
#44
 Toluene
 Concen: 25.111 ug/L
 RT: 10.38 min Scan# 1391
 Delta R.T. -0.00 min
 Lab File: VW014220.D
 Acq: 05 Dec 2019 18:23

Instrument : MSVOA_W
 Client Sampled : DBBL1MS

Tgt Ion: 91 Resp: 2019910

Ion	Ratio	Lower	Upper
91	100		
92	59.9	40.7	75.7

Manual Integrations
APPROVED
 apatel
 12/6/2019 2:55:43 PM



#52
 Chlorobenzene
 Concen: 24.055 ug/L
 RT: 11.65 min Scan# 1599
 Delta R.T. -0.00 min
 Lab File: VW014220.D
 Acq: 05 Dec 2019 18:23

Tgt Ion: 112 Resp: 1250576

Ion	Ratio	Lower	Upper
112	100		
77	58.1	42.2	63.4
114	31.7	22.5	41.9

