

Data Path : Z:\voasrv\HPCHEM1\MSVOA\_W\Data\VW120624\  
 Data File : VW031153.D  
 Acq On : 06 Dec 2024 16:12  
 Operator : SY/MD  
 Sample : P5066-03  
 Misc : 3.50g/10mL/MSVOA\_W/SOIL/B  
 ALS Vial : 17 Sample Multiplier: 1

Instrument :  
 MSVOA\_W  
 ClientSampleId :  
 E28M2

Integration Parameters: LSCINT.P

Integrator: RTE  
 Smoothing : OFF  
 Sampling : 1  
 Start Thrs: 0.2  
 Stop Thrs : 0

Filtering: 5  
 Min Area: 0 % of largest Peak  
 Max Peaks: 100  
 Peak Location: TOP

If leading or trailing edge < 100 prefer < Baseline drop else tangent >  
 Peak separation: 5

Method : Z:\voasrv\HPCHEM1\MSVOA\_W\Method\SFAMWLM120424SMA.M  
 Title : SFAM01.0

Signal : TIC: VW031153.D\data.ms

peak #	R.T. min	first scan	max scan	last scan	PK TY	peak height	corr. area	corr. % max.	% of total
1	2.149	40	43	44	rBV2	1106	1238	0.08%	0.016%
2	2.174	45	47	51	rVB2	1674	1771	0.12%	0.023%
3	2.222	53	55	58	rBV3	1438	1875	0.12%	0.024%
4	2.271	61	63	67	rBV5	950	1645	0.11%	0.021%
5	2.332	67	73	74	rBV3	8238	13315	0.87%	0.174%
6	2.424	86	88	92	rVB4	1549	1579	0.10%	0.021%
7	2.515	101	103	107	rVB3	1695	1682	0.11%	0.022%
8	2.552	107	109	111	rBV2	869	921	0.06%	0.012%
9	2.637	122	123	125	rVB	2179	1584	0.10%	0.021%
10	2.680	125	130	133	rBV6	1110	2339	0.15%	0.031%
11	2.741	137	140	146	rBV7	1657	3122	0.20%	0.041%
12	2.887	159	164	169	rVB	5933	11049	0.72%	0.144%
13	3.033	184	188	197	rVB4	4011	9203	0.60%	0.120%
14	3.240	218	222	227	rVB5	813	1613	0.10%	0.021%
15	3.283	227	229	234	rBV5	835	1250	0.08%	0.016%
16	3.405	242	249	255	rVB6	2067	5299	0.34%	0.069%
17	3.557	271	274	278	rBV3	446	722	0.05%	0.009%
18	3.728	299	302	307	rBV4	971	1405	0.09%	0.018%
19	3.844	317	321	324	rBV5	585	930	0.06%	0.012%
20	4.021	342	350	361	rVV4	10815	29424	1.91%	0.384%
21	4.374	403	408	409	rVV	1040	1442	0.09%	0.019%
22	4.405	411	413	416	rVB3	1512	1746	0.11%	0.023%
23	4.655	453	454	460	rVB3	791	936	0.06%	0.012%
24	4.960	501	504	506	rBV3	740	939	0.06%	0.012%
25	5.075	520	523	525	rBV2	705	1042	0.07%	0.014%
26	5.185	539	541	545	rVB4	612	732	0.05%	0.010%
27	5.429	572	581	583	rBV4	1576	3395	0.22%	0.044%
28	5.764	631	636	637	rVB	807	890	0.06%	0.012%
29	5.917	656	661	662	rBV2	720	749	0.05%	0.010%
30	5.947	662	666	668	rBV5	943	1554	0.10%	0.020%
31	6.106	689	692	696	rVB2	469	729	0.05%	0.010%
32	6.624	772	777	780	rBV2	645	862	0.06%	0.011%
33	6.978	833	835	839	rVB4	647	845	0.05%	0.011%
34	7.081	848	852	853	rBV3	1286	1449	0.09%	0.019%
35	7.228	874	876	880	rBV5	540	873	0.06%	0.011%
36	7.484	915	918	921	rBV2	578	762	0.05%	0.010%

Data Path : Z:\voasrv\HPCHEM1\MSVOA\_W\Data\VW120624\  
 Data File : VW031153.D  
 Acq On : 06 Dec 2024 16:12  
 Operator : SY/MD  
 Sample : P5066-03  
 Misc : 3.50g/10mL/MSVOA\_W/SOIL/B  
 ALS Vial : 17 Sample Multiplier: 1

Instrument :  
 MSVOA\_W  
 ClientSampleId :  
 E28M2

Integration Parameters: LSCINT.P

Integrator: RTE  
 Smoothing : OFF  
 Sampling : 1  
 Start Thrs: 0.2  
 Stop Thrs : 0

Filtering: 5  
 Min Area: 0 % of largest Peak  
 Max Peaks: 100  
 Peak Location: TOP

If leading or trailing edge < 100 prefer < Baseline drop else tangent >  
 Peak separation: 5

Method : Z:\voasrv\HPCHEM1\MSVOA\_W\Method\SFAMWLM120424SMA.M  
 Title : SFAM01.0

37	7.654	936	946	957	rBV3	9582	30243	1.97%	0.395%
38	7.849	977	978	981	rBV	899	808	0.05%	0.011%
39	7.941	983	993	994	rBV5	1798	3070	0.20%	0.040%
40	7.959	994	996	1001	rVB5	2021	2708	0.18%	0.035%
41	8.026	1003	1007	1009	rBV3	614	785	0.05%	0.010%
42	8.154	1023	1028	1033	rVV6	1271	2720	0.18%	0.036%
43	8.282	1040	1049	1062	rVB3	19982	66304	4.31%	0.866%
44	8.435	1069	1074	1077	rBV5	1600	2793	0.18%	0.036%
45	8.496	1081	1084	1086	rBV2	783	749	0.05%	0.010%
46	8.563	1091	1095	1096	rBV2	1808	1912	0.12%	0.025%
47	8.691	1109	1116	1124	rVB7	3167	7625	0.50%	0.100%
48	8.758	1124	1127	1130	rVB2	800	1005	0.07%	0.013%
49	8.837	1133	1140	1149	rBV2	18395	40216	2.62%	0.525%
50	9.093	1174	1182	1194	rBV4	44646	96144	6.25%	1.255%
51	9.276	1204	1212	1217	rBV4	14838	35536	2.31%	0.464%
52	9.331	1217	1221	1227	rVB6	9567	20400	1.33%	0.266%
53	9.520	1246	1252	1258	rBV7	1723	3950	0.26%	0.052%
54	9.605	1262	1266	1272	rVB6	2259	4102	0.27%	0.054%
55	9.672	1275	1277	1280	rBV	806	733	0.05%	0.010%
56	9.751	1283	1290	1294	rBV6	3234	6645	0.43%	0.087%
57	9.880	1308	1311	1312	rBV2	1480	1487	0.10%	0.019%
58	9.953	1318	1323	1328	rBV5	5553	11625	0.76%	0.152%
59	10.038	1332	1337	1341	rVV2	6059	10682	0.69%	0.139%
60	10.099	1341	1347	1352	rVV4	4200	9259	0.60%	0.121%
61	10.142	1352	1354	1356	rVB3	1183	730	0.05%	0.010%
62	10.318	1376	1383	1389	rBV2	31251	60451	3.93%	0.789%
63	10.386	1390	1394	1401	rVB	19153	34474	2.24%	0.450%
64	10.440	1401	1403	1406	rBV4	1420	1637	0.11%	0.021%
65	10.501	1407	1413	1421	rVB3	20238	36861	2.40%	0.481%
66	10.587	1421	1427	1430	rBV4	4073	8658	0.56%	0.113%
67	10.666	1436	1440	1443	rBV5	5658	9070	0.59%	0.118%
68	10.757	1451	1455	1459	rBV7	3423	6119	0.40%	0.080%
69	10.861	1464	1472	1479	rBV	893744	1537465	100.00%	20.070%
70	11.172	1519	1523	1527	rVB	12152	17307	1.13%	0.226%
71	11.227	1527	1532	1537	rBV4	13159	23678	1.54%	0.309%
72	11.337	1547	1550	1553	rBV4	6974	8034	0.52%	0.105%
73	11.507	1575	1578	1583	rVB2	13742	19309	1.26%	0.252%
74	11.629	1593	1598	1607	rBV	22493	40581	2.64%	0.530%
75	11.727	1609	1614	1618	rBV2	22318	39152	2.55%	0.511%
76	11.836	1625	1632	1641	rBV3	276465	549147	35.72%	7.168%

Data Path : Z:\voasrv\HPCHEM1\MSVOA\_W\Data\VW120624\  
 Data File : VW031153.D  
 Acq On : 06 Dec 2024 16:12  
 Operator : SY/MD  
 Sample : P5066-03  
 Misc : 3.50g/10mL/MSVOA\_W/SOIL/B  
 ALS Vial : 17 Sample Multiplier: 1

Instrument :  
 MSVOA\_W  
 ClientSampleId :  
 E28M2

Integration Parameters: LSCINT.P

Integrator: RTE  
 Smoothing : OFF  
 Sampling : 1  
 Start Thrs: 0.2  
 Stop Thrs : 0

Filtering: 5  
 Min Area: 0 % of largest Peak  
 Max Peaks: 100  
 Peak Location: TOP

If leading or trailing edge < 100 prefer < Baseline drop else tangent >  
 Peak separation: 5

Method : Z:\voasrv\HPCHEM1\MSVOA\_W\Method\SFAMWLM120424SMA.M  
 Title : SFAM01.0

77	11.910	1641	1644	1650	rVB2	42796	71390	4.64%	0.932%
78	11.971	1650	1654	1662	rBV7	11743	25349	1.65%	0.331%
79	12.056	1662	1668	1673	rVB5	21283	40472	2.63%	0.528%
80	12.135	1674	1681	1692	rBV3	157700	479230	31.17%	6.256%
81	12.245	1696	1699	1703	rVB	101160	141409	9.20%	1.846%
82	12.294	1703	1707	1710	rBV	65808	109171	7.10%	1.425%
83	12.379	1710	1721	1730	rVB5	179748	597406	38.86%	7.798%
84	12.641	1762	1764	1768	rVB	34444	38768	2.52%	0.506%
85	12.775	1782	1786	1793	rVB4	75859	156603	10.19%	2.044%
86	12.861	1794	1800	1803	rBV4	91394	168620	10.97%	2.201%
87	12.922	1805	1810	1817	rVV2	519773	960883	62.50%	12.543%
88	12.989	1818	1821	1826	rVB2	64520	99045	6.44%	1.293%
89	13.159	1845	1849	1857	rVB3	114631	199550	12.98%	2.605%
90	13.245	1858	1863	1868	rBV	186159	306001	19.90%	3.994%
91	13.440	1889	1895	1899	rBV5	110134	251910	16.38%	3.288%
92	13.580	1915	1918	1922	rVB	83519	113615	7.39%	1.483%
93	13.867	1960	1965	1971	rBV3	247623	373483	24.29%	4.875%
94	14.196	2015	2019	2025	rVB3	41803	71800	4.67%	0.937%
95	14.452	2058	2061	2064	rVB	53443	64313	4.18%	0.840%
96	14.488	2065	2067	2071	rVB3	21671	26210	1.70%	0.342%
97	14.714	2100	2104	2109	rVB2	115163	164763	10.72%	2.151%
98	14.787	2111	2116	2121	rBV2	122501	216682	14.09%	2.829%
99	15.311	2198	2202	2206	rBV6	24627	44880	2.92%	0.586%
100	15.543	2236	2240	2249	rVB	44186	74023	4.81%	0.966%

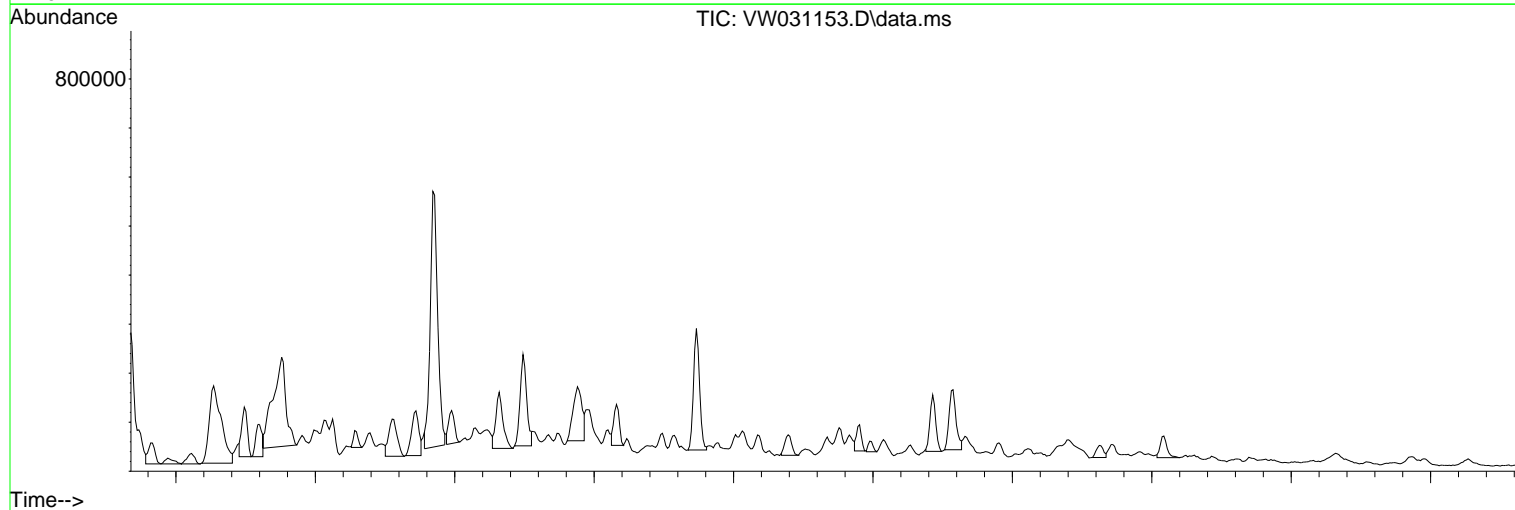
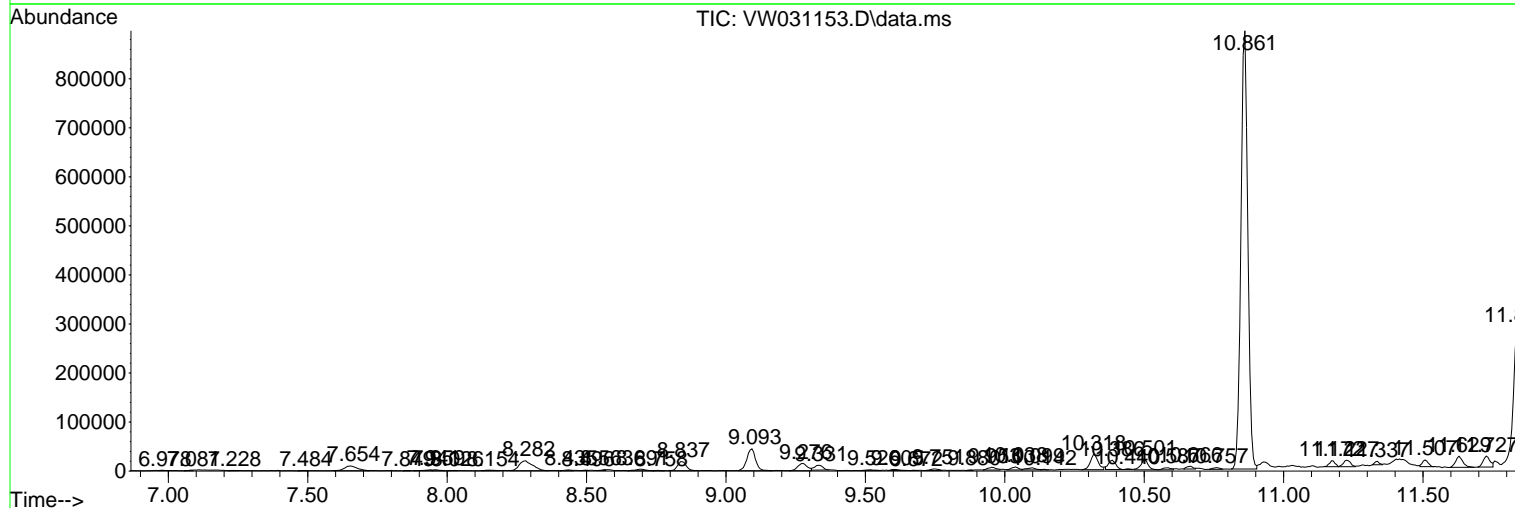
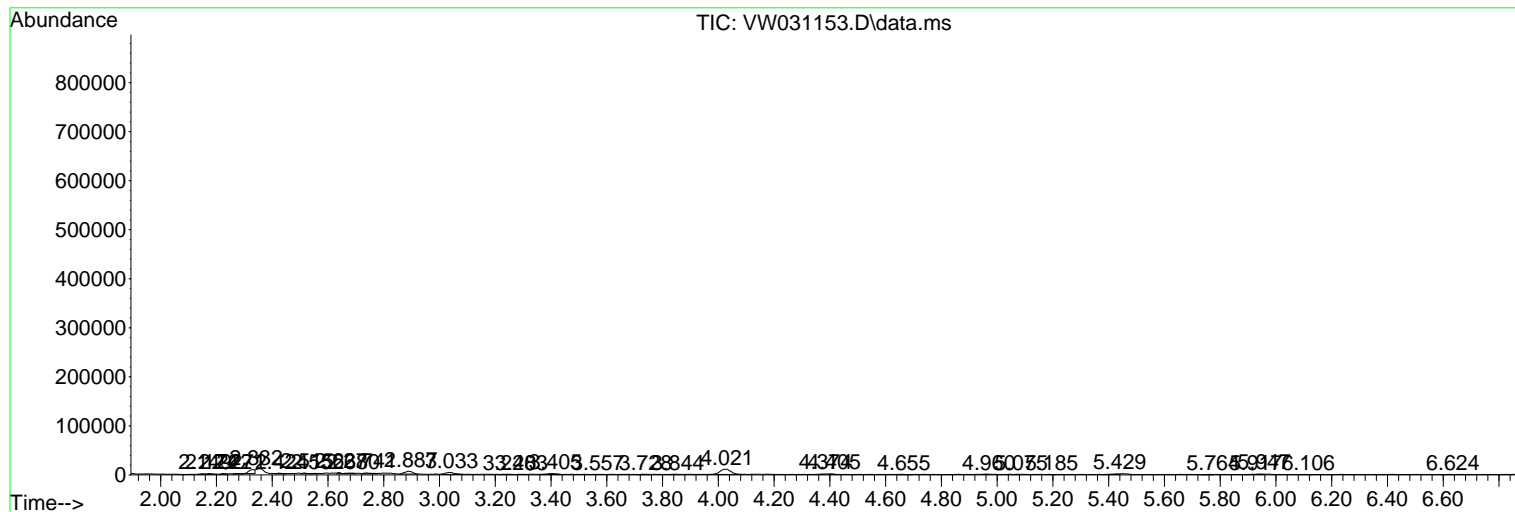
Sum of corrected areas: 7660661

Data Path : Z:\voasrv\HPCHEM1\MSVOA\_W\Data\VW120624\  
 Data File : VW031153.D  
 Acq On : 06 Dec 2024 16:12  
 Operator : SY/MD  
 Sample : P5066-03  
 Misc : 3.50g/10mL/MSVOA\_W/SOIL/B  
 ALS Vial : 17 Sample Multiplier: 1

Instrument :  
 MSVOA\_W  
 ClientSampleId :  
 E28M2

Quant Method : Z:\voasrv\HPCHEM1\MSVOA\_W\Method\SFAMWLM120424SMA.M  
 Quant Title : SFAM01.0

TIC Library : C:\Database\NIST20.L  
 TIC Integration Parameters: LSCINT.P



Data Path : Z:\voasrv\HPCHEM1\MSVOA\_W\Data\VW120624\  
 Data File : VW031153.D  
 Acq On : 06 Dec 2024 16:12  
 Operator : SY/MD  
 Sample : P5066-03  
 Misc : 3.50g/10mL/MSVOA\_W/SOIL/B  
 ALS Vial : 17 Sample Multiplier: 1

Instrument :  
 MSVOA\_W  
 ClientSampleId :  
 E28M2

Quant Method : Z:\voasrv\HPCHEM1\MSVOA\_W\Method\SFAMWLM120424SMA.M  
 Quant Title : SFAM01.0

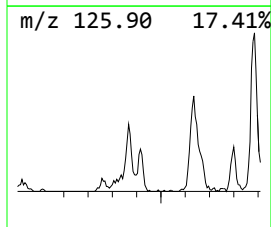
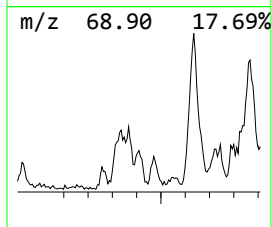
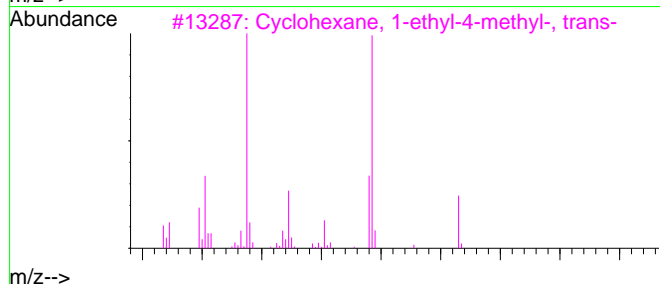
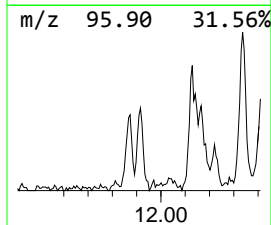
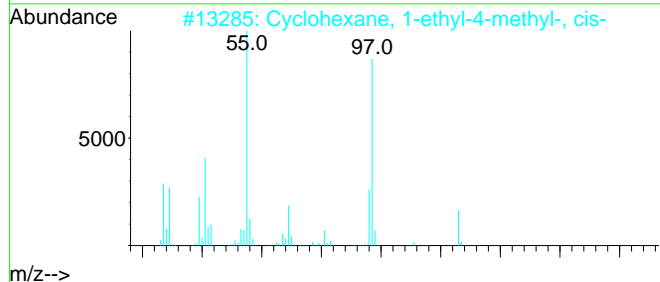
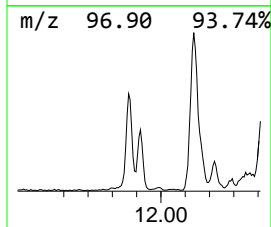
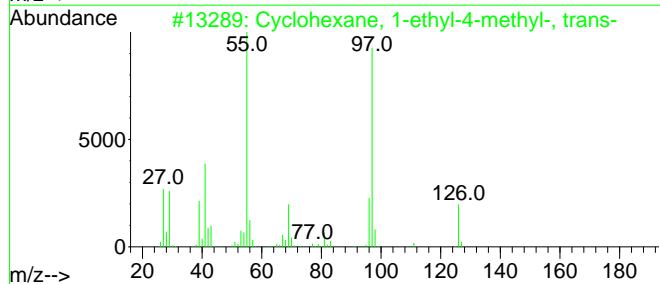
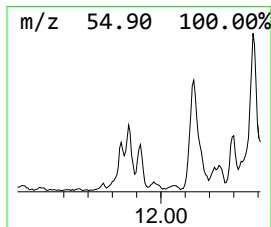
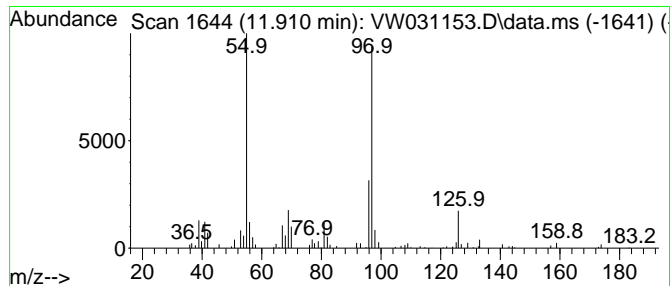
TIC Library : C:\Database\NIST20.L  
 TIC Integration Parameters: LSCINT.P

\*\*\*\*\*  
 Peak Number 22 (DEL) Alkane: Cyclic11.910 Concentration Rank 6

R.T.	EstConc	Area	Relative to ISTD	R.T.
11.910	43.98 ug/L	71390	Chlorobenzene-d5	11.629

Hit# of 5	Tentative ID	MW	MolForm	CAS#	Qual
1	Cyclohexane, 1-ethyl-4-methyl-, ...	126	C9H18	006236-88-0	90
2	Cyclohexane, 1-ethyl-4-methyl-, ...	126	C9H18	004926-78-7	90
3	Cyclohexane, 1-ethyl-4-methyl-, ...	126	C9H18	006236-88-0	87
4	Cyclohexane, 1-ethyl-4-methyl-, ...	126	C9H18	004926-78-7	87
5	cis-1-Ethyl-3-methyl-cyclohexane	126	C9H18	019489-10-2	81



Data Path : Z:\voasrv\HPCHEM1\MSVOA\_W\Data\VW120624\  
 Data File : VW031153.D  
 Acq On : 06 Dec 2024 16:12  
 Operator : SY/MD  
 Sample : P5066-03  
 Misc : 3.50g/10mL/MSVOA\_W/SOIL/B  
 ALS Vial : 17 Sample Multiplier: 1

Instrument :  
 MSVOA\_W  
 ClientSampleId :  
 E28M2

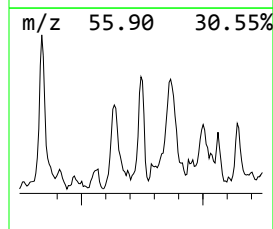
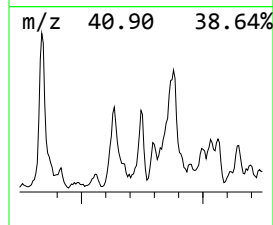
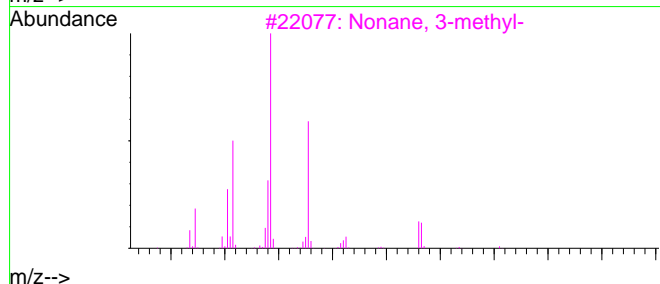
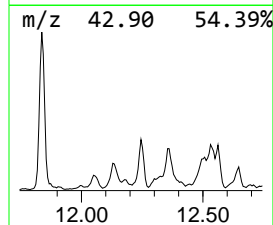
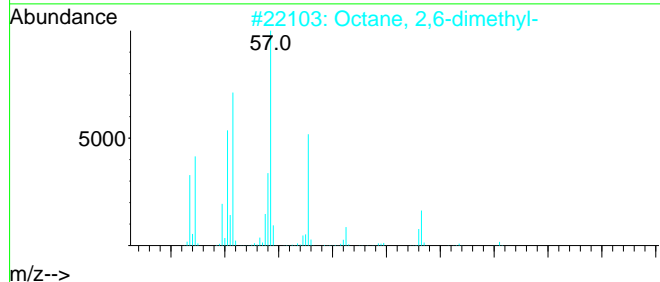
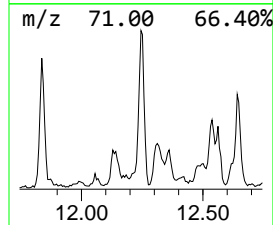
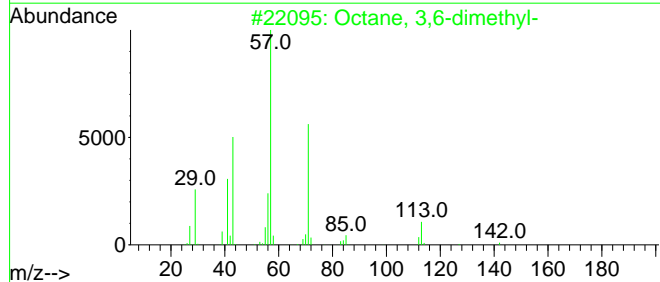
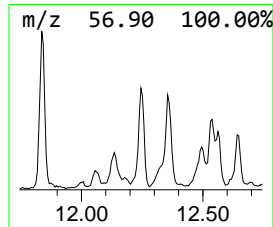
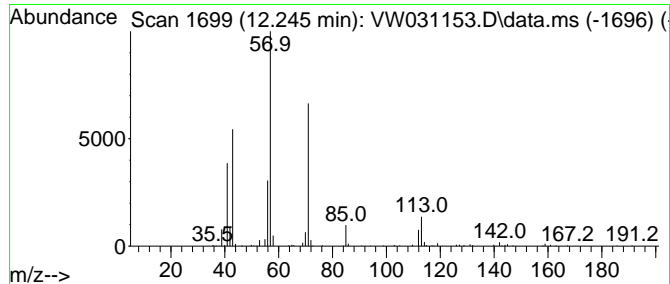
Quant Method : Z:\voasrv\HPCHEM1\MSVOA\_W\Method\SFAMWLM120424SMA.M  
 Quant Title : SFAM01.0

TIC Library : C:\Database\NIST20.L  
 TIC Integration Parameters: LSCINT.P

\*\*\*\*\*  
 Peak Number 25 (DEL) Alkane: Straight-Chai... Concentration Rank 2

R.T.	EstConc	Area	Relative to ISTD	R.T.
12.245	87.12 ug/L	141409	Chlorobenzene-d5	11.629

Hit#	of 5	Tentative ID	MW	MolForm	CAS#	Qual
1		Octane, 3,6-dimethyl-	142	C10H22	015869-94-0	90
2		Octane, 2,6-dimethyl-	142	C10H22	002051-30-1	90
3		Nonane, 3-methyl-	142	C10H22	005911-04-6	87
4		Octane, 2,6-dimethyl-	142	C10H22	002051-30-1	80
5		Octane, 3,6-dimethyl-	142	C10H22	015869-94-0	72



Data Path : Z:\voasrv\HPCHEM1\MSVOA\_W\Data\VW120624\  
 Data File : VW031153.D  
 Acq On : 06 Dec 2024 16:12  
 Operator : SY/MD  
 Sample : P5066-03  
 Misc : 3.50g/10mL/MSVOA\_W/SOIL/B  
 ALS Vial : 17 Sample Multiplier: 1

Instrument :  
 MSVOA\_W  
 ClientSampleId :  
 E28M2

Quant Method : Z:\voasrv\HPCHEM1\MSVOA\_W\Method\SFAMWLM120424SMA.M  
 Quant Title : SFAM01.0

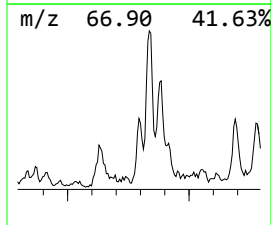
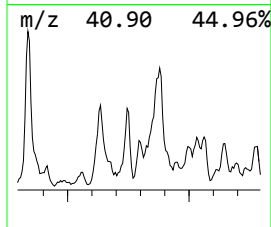
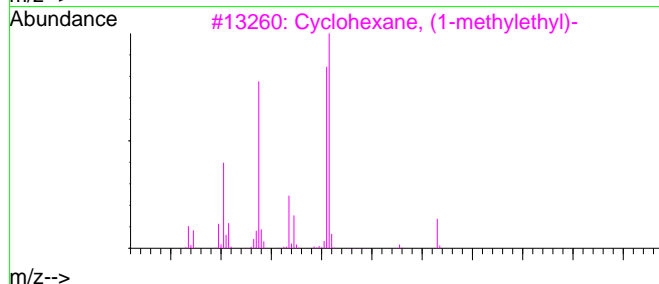
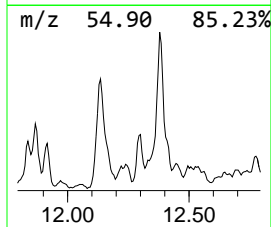
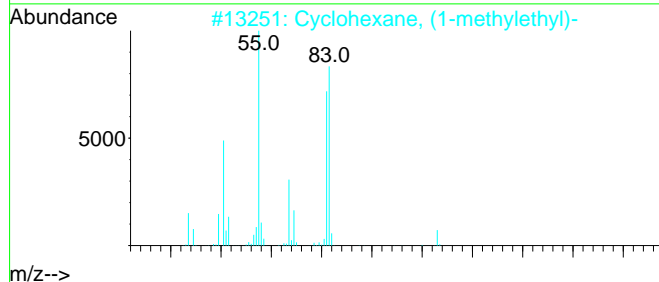
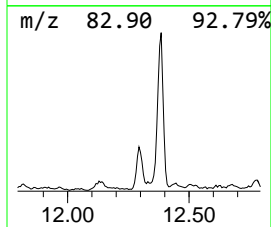
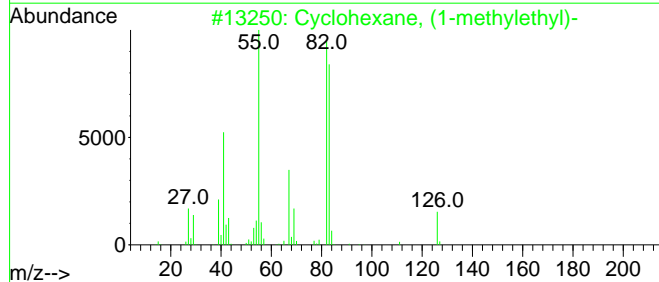
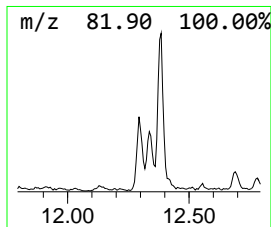
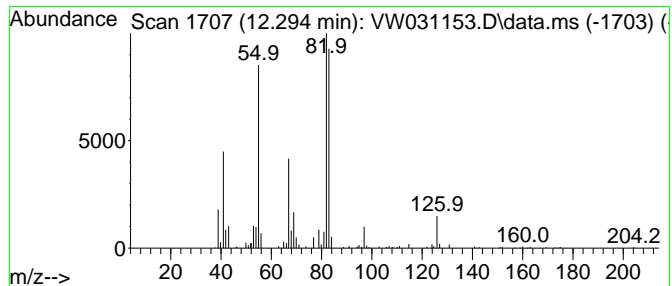
TIC Library : C:\Database\NIST20.L  
 TIC Integration Parameters: LSCINT.P

\*\*\*\*\*  
 Peak Number 26 (DEL) Alkane: Cyclic12.294 Concentration Rank 3

R.T.	EstConc	Area	Relative to ISTD	R.T.
12.294	67.25 ug/L	109171	Chlorobenzene-d5	11.629

Hit# of 5	Tentative ID	MW	MolForm	CAS#	Qual
1	Cyclohexane, (1-methylethyl)-	126	C9H18	000696-29-7	91
2	Cyclohexane, (1-methylethyl)-	126	C9H18	000696-29-7	86
3	Cyclohexane, (1-methylethyl)-	126	C9H18	000696-29-7	83
4	Succinic acid, 3-methylbut-2-yl ...	270	C15H26O4	1000391-08-2	64
5	Succinic acid, 3-methylbut-2-yl ...	270	C15H26O4	1000391-11-1	59



Data Path : Z:\voasrv\HPCHEM1\MSVOA\_W\Data\VW120624\  
 Data File : VW031153.D  
 Acq On : 06 Dec 2024 16:12  
 Operator : SY/MD  
 Sample : P5066-03  
 Misc : 3.50g/10mL/MSVOA\_W/SOIL/B  
 ALS Vial : 17 Sample Multiplier: 1

Instrument :  
 MSVOA\_W  
 ClientSampleId :  
 E28M2

Quant Method : Z:\voasrv\HPCHEM1\MSVOA\_W\Method\SFAMWLM120424SMA.M  
 Quant Title : SFAM01.0

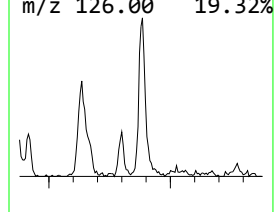
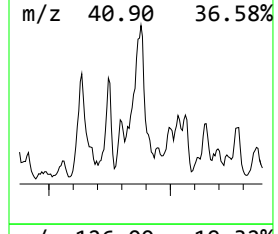
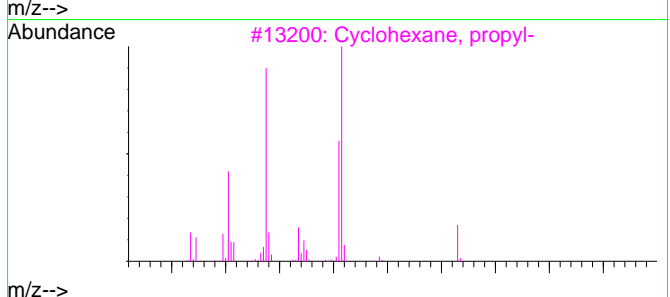
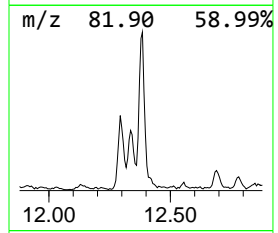
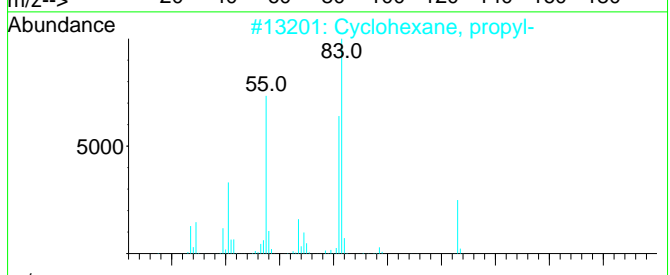
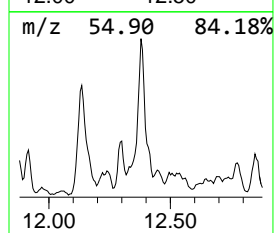
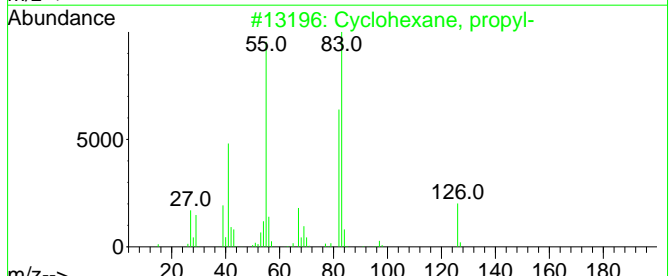
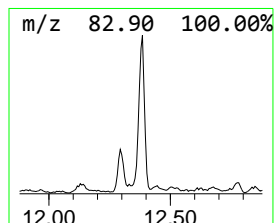
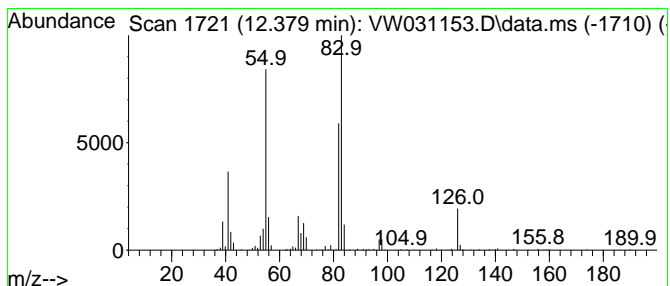
TIC Library : C:\Database\NIST20.L  
 TIC Integration Parameters: LSCINT.P

\*\*\*\*\*  
 Peak Number 27 (DEL) Alkane: Cyclic12.379 Concentration Rank 1

R.T.	EstConc	Area	Relative to ISTD	R.T.
12.379	368.03 ug/L	597406	Chlorobenzene-d5	11.629

Hit# of	5	Tentative ID	MW	MolForm	CAS#	Qual
1		Cyclohexane, propyl-	126	C9H18	001678-92-8	97
2		Cyclohexane, propyl-	126	C9H18	001678-92-8	95
3		Cyclohexane, propyl-	126	C9H18	001678-92-8	94
4		Cyclohexane, propyl-	126	C9H18	001678-92-8	91
5		Cyclohexane, butyl-	140	C10H20	001678-93-9	80





Data Path : Z:\voasrv\HPCHEM1\MSVOA\_W\Data\VW120624\  
 Data File : VW031153.D  
 Acq On : 06 Dec 2024 16:12  
 Operator : SY/MD  
 Sample : P5066-03  
 Misc : 3.50g/10mL/MSVOA\_W/SOIL/B  
 ALS Vial : 17 Sample Multiplier: 1

Instrument :  
 MSVOA\_W  
 ClientSampleId :  
 E28M2

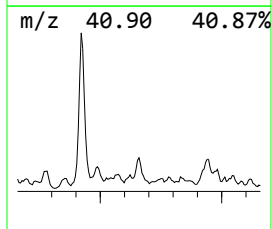
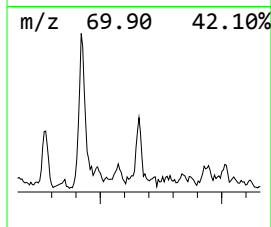
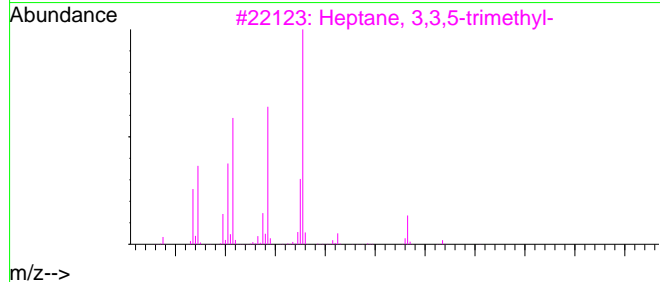
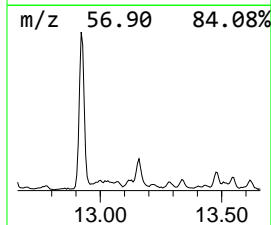
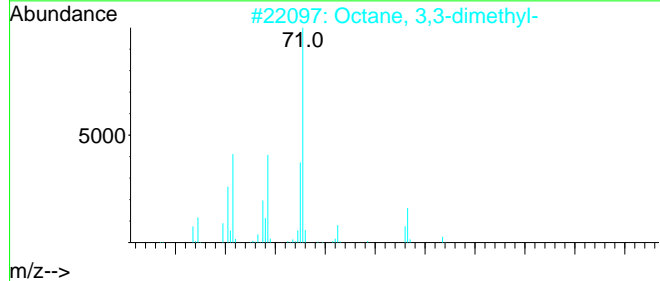
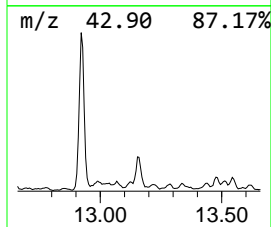
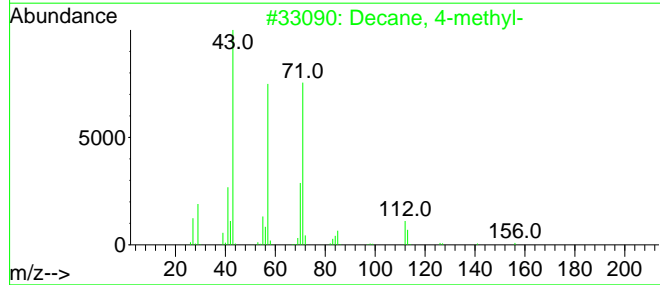
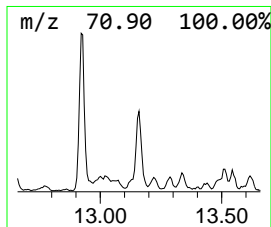
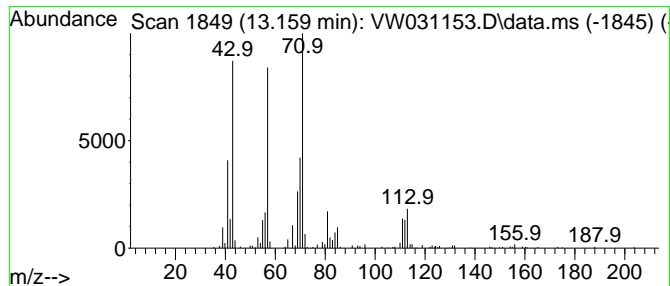
Quant Method : Z:\voasrv\HPCHEM1\MSVOA\_W\Method\SFAMWLM120424SMA.M  
 Quant Title : SFAM01.0

TIC Library : C:\Database\NIST20.L  
 TIC Integration Parameters: LSCINT.P

\*\*\*\*\*  
 Peak Number 30 (DEL) Alkane: Straight-Chai... Concentration Rank 7

R.T.	EstConc	Area	Relative to ISTD	R.T.
13.159	43.91 ug/L	199550	1,4-Dichlorobenzene-d4	13.556

Hit#	of 5	Tentative ID	MW	MolForm	CAS#	Qual
1		Decane, 4-methyl-	156	C11H24	002847-72-5	90
2		Octane, 3,3-dimethyl-	142	C10H22	004110-44-5	72
3		Heptane, 3,3,5-trimethyl-	142	C10H22	007154-80-5	72
4		Heptane, 3,3,5-trimethyl-	142	C10H22	007154-80-5	72
5		Decane, 4-methyl-	156	C11H24	002847-72-5	70



Data Path : Z:\voasrv\HPCHEM1\MSVOA\_W\Data\VW120624\  
 Data File : VW031153.D  
 Acq On : 06 Dec 2024 16:12  
 Operator : SY/MD  
 Sample : P5066-03  
 Misc : 3.50g/10mL/MSVOA\_W/SOIL/B  
 ALS Vial : 17 Sample Multiplier: 1

Instrument :  
 MSVOA\_W  
 ClientSampleId :  
 E28M2

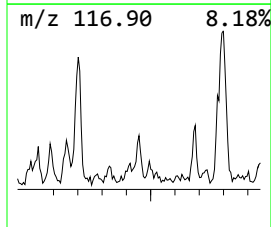
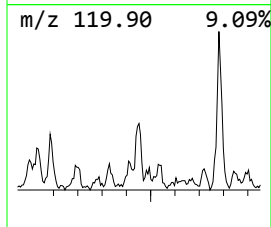
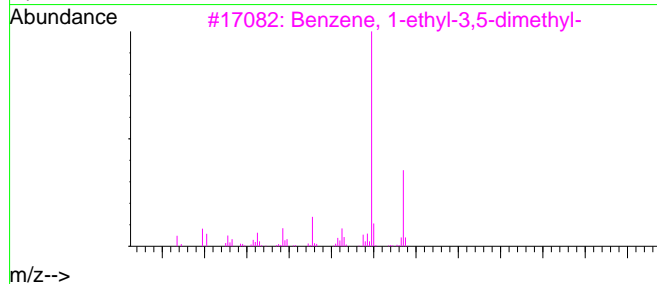
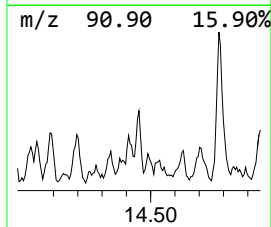
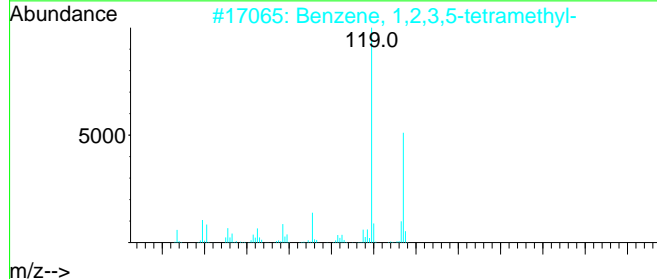
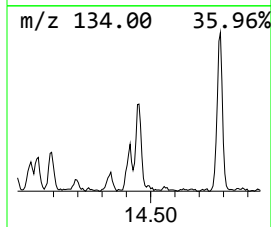
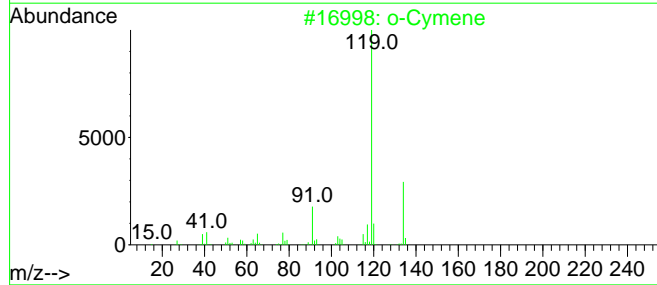
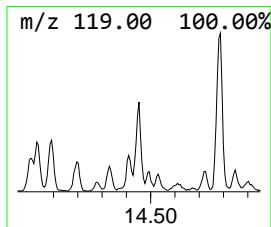
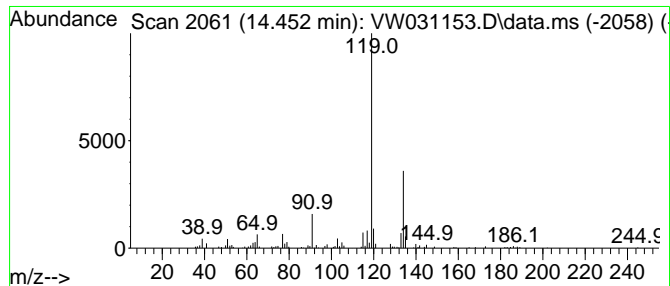
Quant Method : Z:\voasrv\HPCHEM1\MSVOA\_W\Method\SFAMWLM120424SMA.M  
 Quant Title : SFAM01.0

TIC Library : C:\Database\NIST20.L  
 TIC Integration Parameters: LSCINT.P

\*\*\*\*\*  
 Peak Number 33 o-Cymene Concentration Rank 17

R.T.	EstConc	Area	Relative to ISTD	R.T.
14.452	14.15 ug/L	64313	1,4-Dichlorobenzene-d4	13.556

Hit#	of	Tentative ID	MW	MolForm	CAS#	Qual
1	5	o-Cymene	134	C10H14	000527-84-4	93
2		Benzene, 1,2,3,5-tetramethyl-	134	C10H14	000527-53-7	91
3		Benzene, 1-ethyl-3,5-dimethyl-	134	C10H14	000934-74-7	91
4		Benzene, 1,2,3,5-tetramethyl-	134	C10H14	000527-53-7	91
5		Benzene, 1-ethyl-2,3-dimethyl-	134	C10H14	000933-98-2	91



Data Path : Z:\voasrv\HPCHEM1\MSVOA\_W\Data\VW120624\  
 Data File : VW031153.D  
 Acq On : 06 Dec 2024 16:12  
 Operator : SY/MD  
 Sample : P5066-03  
 Misc : 3.50g/10mL/MSVOA\_W/SOIL/B  
 ALS Vial : 17 Sample Multiplier: 1

Instrument :  
 MSVOA\_W  
 ClientSampleId :  
 E28M2

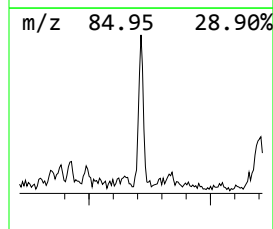
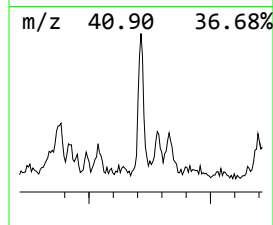
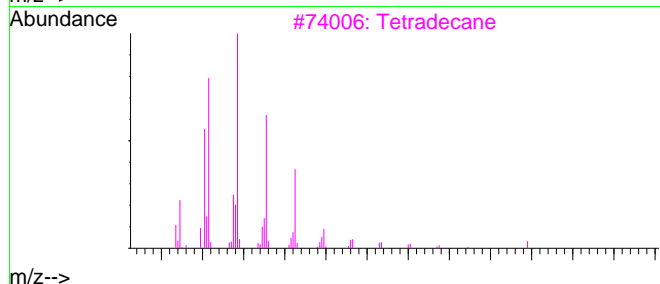
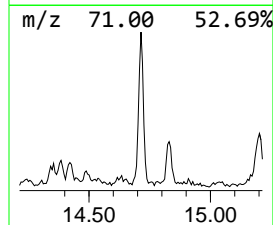
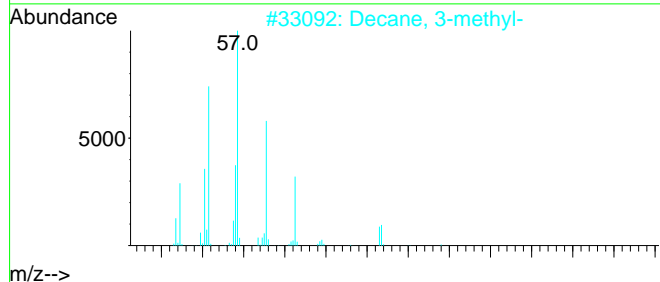
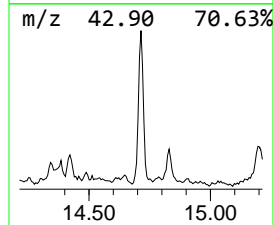
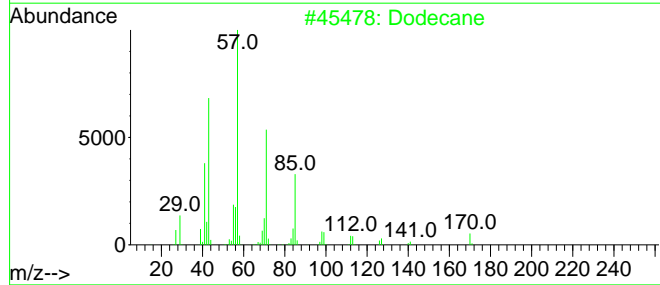
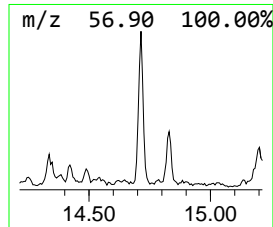
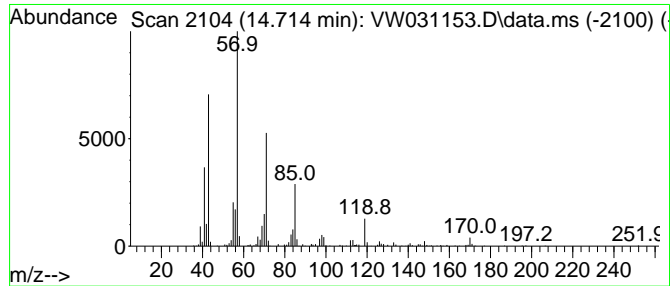
Quant Method : Z:\voasrv\HPCHEM1\MSVOA\_W\Method\SFAMWLM120424SMA.M  
 Quant Title : SFAM01.0

TIC Library : C:\Database\NIST20.L  
 TIC Integration Parameters: LSCINT.P

\*\*\*\*\*  
 Peak Number 35 (DEL) Alkane: Straight-Chai... Concentration Rank 9

R.T.	EstConc	Area	Relative to ISTD	R.T.
14.714	36.25 ug/L	164763	1,4-Dichlorobenzene-d4	13.556

Hit#	of 5	Tentative ID	MW	MolForm	CAS#	Qual
1		Dodecane	170	C12H26	000112-40-3	87
2		Decane, 3-methyl-	156	C11H24	013151-34-3	64
3		Tetradecane	198	C14H30	000629-59-4	64
4		Nonadecane	268	C19H40	000629-92-5	64
5		Decane, 2,3,5-trimethyl-	184	C13H28	062238-11-3	59



Data Path : Z:\voasrv\HPCHEM1\MSVOA\_W\Data\VW120624\  
 Data File : VW031153.D  
 Acq On : 06 Dec 2024 16:12  
 Operator : SY/MD  
 Sample : P5066-03  
 Misc : 3.50g/10mL/MSVOA\_W/SOIL/B  
 ALS Vial : 17 Sample Multiplier: 1

Instrument :  
 MSVOA\_W  
 ClientSampleId :  
 E28M2

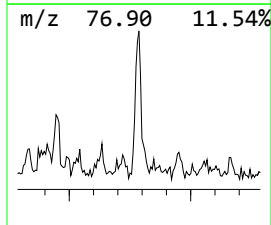
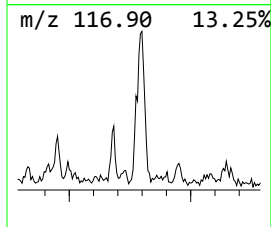
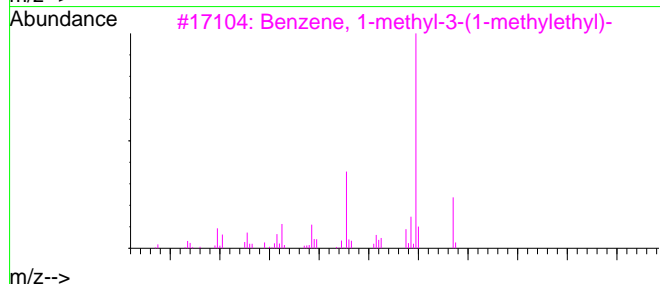
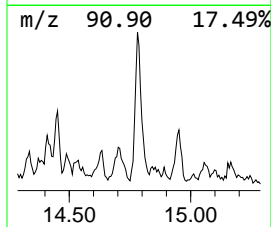
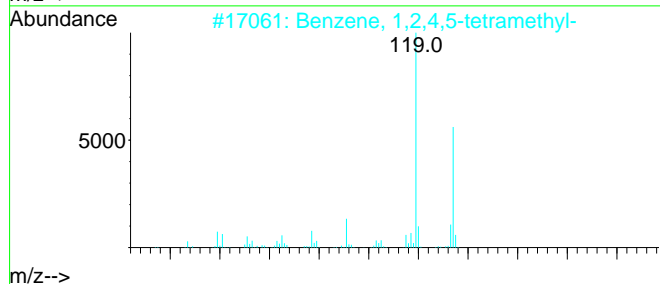
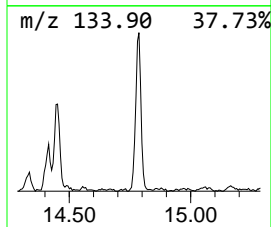
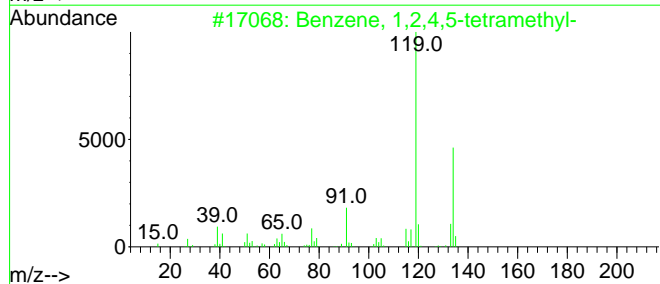
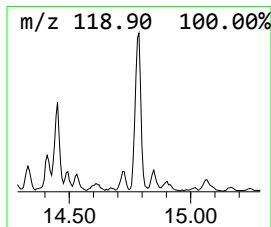
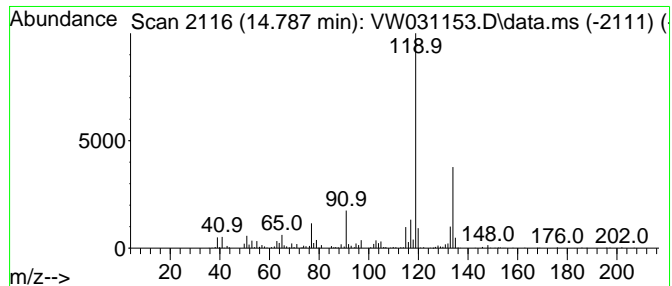
Quant Method : Z:\voasrv\HPCHEM1\MSVOA\_W\Method\SFAMWLM120424SMA.M  
 Quant Title : SFAM01.0

TIC Library : C:\Database\NIST20.L  
 TIC Integration Parameters: LSCINT.P

\*\*\*\*\*  
 Peak Number 36 Benzene, 1,2,4,5-tetramethyl- Concentration Rank 5

R.T.	EstConc	Area	Relative to ISTD	R.T.
14.787	47.68 ug/L	216682	1,4-Dichlorobenzene-d4	13.556

Hit# of 5	Tentative ID	MW	MolForm	CAS#	Qual
1	Benzene, 1,2,4,5-tetramethyl-	134	C10H14	000095-93-2	95
2	Benzene, 1,2,4,5-tetramethyl-	134	C10H14	000095-93-2	94
3	Benzene, 1-methyl-3-(1-methyleth...	134	C10H14	000535-77-3	90
4	Benzene, 1,2,3,4-tetramethyl-	134	C10H14	000488-23-3	90
5	Benzene, 1,2,3,4-tetramethyl-	134	C10H14	000488-23-3	90



Data Path : Z:\voasrv\HPCHEM1\MSVOA\_W\Data\VW120624\  
 Data File : VW031153.D  
 Acq On : 06 Dec 2024 16:12  
 Operator : SY/MD  
 Sample : P5066-03  
 Misc : 3.50g/10mL/MSVOA\_W/SOIL/B  
 ALS Vial : 17 Sample Multiplier: 1

Instrument :  
 MSVOA\_W  
 ClientSampleId :  
 E28M2

Quant Method : Z:\voasrv\HPCHEM1\MSVOA\_W\Method\SFAMWLM120424SMA.M  
 Quant Title : SFAM01.0

TIC Library : C:\Database\NIST20.L  
 TIC Integration Parameters: LSCINT.P

TIC Top Hit name	RT	EstConc	Units	Response	--Internal Standard--			
					#	RT	Resp	Conc
(DEL) Alkane: C...	11.910	44.0	ug/L	71390	2	11.629	40581	25.0
(DEL) Alkane: S...	12.245	87.1	ug/L	141409	2	11.629	40581	25.0
(DEL) Alkane: C...	12.294	67.3	ug/L	109171	2	11.629	40581	25.0
(DEL) Alkane: C...	12.379	368.0	ug/L	597406	2	11.629	40581	25.0
(DEL) Alkane: S...	13.159	43.9	ug/L	199550	3	13.556	113615	25.0
o-Cymene	14.452	14.2	ug/L	64313	3	13.556	113615	25.0
(DEL) Alkane: S...	14.714	36.3	ug/L	164763	3	13.556	113615	25.0
Benzene, 1,2,4,...	14.787	47.7	ug/L	216682	3	13.556	113615	25.0