

Data Path : Z:\voasrv\HPCHEM1\MSVOA\_W\Data\VW121024\  
 Data File : VW031191.D  
 Acq On : 10 Dec 2024 15:05  
 Operator : SY/MD  
 Sample : P5153-01RE  
 Misc : 4.61g/10mL/MSVOA\_W/SOIL/B  
 ALS Vial : 16 Sample Multiplier: 1

Instrument :  
 MSVOA\_W  
 ClientSampleId :  
 E28N9RE

Integration Parameters: LSCINT.P

Integrator: RTE  
 Smoothing : OFF  
 Sampling : 1  
 Start Thrs: 0.2  
 Stop Thrs : 0

Filtering: 5  
 Min Area: 0 % of largest Peak  
 Max Peaks: 100  
 Peak Location: TOP

If leading or trailing edge < 100 prefer < Baseline drop else tangent >  
 Peak separation: 5

Method : Z:\voasrv\HPCHEM1\MSVOA\_W\Method\SFAMWLM120424SMA.M  
 Title : SFAM01.0

Signal : TIC: VW031191.D\data.ms

peak #	R.T. min	first scan	max scan	last scan	PK TY	peak height	corr. area	corr. % max.	% of total
1	2.155	37	44	62	rBV	155907	881685	60.33%	7.322%
2	2.308	65	69	70	rBV2	24766	36090	2.47%	0.300%
3	2.838	135	156	158	rBV4	109649	416412	28.49%	3.458%
4	4.661	446	455	460	rBV3	19313	67867	4.64%	0.564%
5	5.423	573	580	581	rBV2	12394	17776	1.22%	0.148%
6	5.698	620	625	626	rBV5	5197	8015	0.55%	0.067%
7	5.734	626	631	632	rBV5	5824	7271	0.50%	0.060%
8	6.899	816	822	828	rBV8	4390	8599	0.59%	0.071%
9	7.155	859	864	865	rBV2	6378	7830	0.54%	0.065%
10	7.618	927	940	954	rBV2	132252	480883	32.91%	3.994%
11	8.221	1027	1039	1045	rBV	404205	1006049	68.84%	8.355%
12	8.721	1117	1121	1124	rBV5	2837	5156	0.35%	0.043%
13	8.813	1127	1136	1148	rVV	680443	1451137	99.30%	12.051%
14	8.923	1148	1154	1166	rVV2	21764	64747	4.43%	0.538%
15	9.258	1200	1209	1221	rBV	281976	646348	44.23%	5.368%
16	9.593	1258	1264	1274	rVV2	13505	37435	2.56%	0.311%
17	9.672	1274	1277	1281	rVV6	3616	7422	0.51%	0.062%
18	9.727	1282	1286	1294	rVB9	4742	9504	0.65%	0.079%
19	9.867	1304	1309	1317	rBV9	6600	18818	1.29%	0.156%
20	10.026	1324	1335	1347	rBV	119187	247090	16.91%	2.052%
21	10.117	1347	1350	1356	rVB8	3603	6264	0.43%	0.052%
22	10.227	1361	1368	1372	rBV6	4478	10702	0.73%	0.089%
23	10.306	1372	1381	1388	rVV	561518	1041520	71.27%	8.649%
24	10.367	1388	1391	1400	rVV	98253	189454	12.96%	1.573%
25	10.434	1400	1402	1405	rVV4	6589	10934	0.75%	0.091%
26	10.483	1406	1410	1415	rVV4	12732	24143	1.65%	0.200%
27	10.569	1415	1424	1437	rVV	73448	164530	11.26%	1.366%
28	10.691	1437	1444	1452	rVB2	32701	69022	4.72%	0.573%
29	10.751	1452	1454	1458	rBV5	2469	3552	0.24%	0.029%
30	10.831	1458	1467	1476	rBV8	6806	20496	1.40%	0.170%
31	10.947	1479	1486	1498	rBV2	47962	149984	10.26%	1.246%
32	11.087	1499	1509	1516	rVV10	19308	68118	4.66%	0.566%
33	11.166	1517	1522	1527	rVV	19546	36810	2.52%	0.306%
34	11.209	1527	1529	1536	rVB7	3521	7186	0.49%	0.060%
35	11.337	1546	1550	1552	rVB5	2279	3271	0.22%	0.027%
36	11.428	1556	1565	1573	rVB4	15609	35765	2.45%	0.297%

Data Path : Z:\voasrv\HPCHEM1\MSVOA\_W\Data\VW121024\  
 Data File : VW031191.D  
 Acq On : 10 Dec 2024 15:05  
 Operator : SY/MD  
 Sample : P5153-01RE  
 Misc : 4.61g/10mL/MSVOA\_W/SOIL/B  
 ALS Vial : 16 Sample Multiplier: 1

Instrument :  
 MSVOA\_W  
 ClientSampleId :  
 E28N9RE

Integration Parameters: LSCINT.P

Integrator: RTE  
 Smoothing : OFF  
 Sampling : 1  
 Start Thrs: 0.2  
 Stop Thrs : 0

Filtering: 5  
 Min Area: 0 % of largest Peak  
 Max Peaks: 100  
 Peak Location: TOP

If leading or trailing edge < 100 prefer < Baseline drop else tangent >  
 Peak separation: 5

Method : Z:\voasrv\HPCHEM1\MSVOA\_W\Method\SFAMWLM120424SMA.M  
 Title : SFAM01.0

37	11.495	1573	1576	1579	rVB4	1980	2472	0.17%	0.021%
38	11.544	1579	1584	1585	rBV5	2157	2538	0.17%	0.021%
39	11.623	1589	1597	1604	rBV	840541	1461399	100.00%	12.136%
40	11.721	1610	1613	1618	rVB2	12079	18495	1.27%	0.154%
41	11.824	1625	1630	1639	rVB2	14146	29839	2.04%	0.248%
42	12.123	1677	1679	1680	rVV2	4131	3716	0.25%	0.031%
43	12.160	1680	1685	1694	rVB4	12077	26233	1.80%	0.218%
44	12.263	1697	1702	1706	rBV7	2838	5791	0.40%	0.048%
45	12.343	1710	1715	1720	rVV7	8747	19272	1.32%	0.160%
46	12.391	1720	1723	1726	rVV4	8740	13301	0.91%	0.110%
47	12.434	1726	1730	1731	rVV4	5544	8958	0.61%	0.074%
48	12.458	1731	1734	1738	rVV5	9343	16311	1.12%	0.135%
49	12.513	1738	1743	1748	rVV2	31492	54873	3.75%	0.456%
50	12.556	1748	1750	1752	rVV3	5406	6871	0.47%	0.057%
51	12.599	1752	1757	1762	rVV	45877	76212	5.22%	0.633%
52	12.641	1762	1764	1766	rVV3	4302	4575	0.31%	0.038%
53	12.690	1766	1772	1782	rVB	126757	232035	15.88%	1.927%
54	12.891	1801	1805	1807	rVV5	3435	4671	0.32%	0.039%
55	12.928	1808	1811	1820	rVB7	11033	21069	1.44%	0.175%
56	13.032	1822	1828	1834	rVB4	9141	18324	1.25%	0.152%
57	13.099	1834	1839	1846	rBV10	4144	6652	0.46%	0.055%
58	13.160	1846	1849	1851	rBV4	2951	3619	0.25%	0.030%
59	13.251	1858	1864	1866	rBV4	4224	7956	0.54%	0.066%
60	13.288	1866	1870	1876	rVB8	7077	13278	0.91%	0.110%
61	13.397	1880	1888	1896	rBV6	19410	48437	3.31%	0.402%
62	13.464	1897	1899	1901	rVV3	3542	3823	0.26%	0.032%
63	13.489	1901	1903	1907	rVB4	7473	8191	0.56%	0.068%
64	13.556	1907	1914	1926	rVB	556800	924554	63.26%	7.678%
65	13.647	1926	1929	1934	rVB4	7922	12254	0.84%	0.102%
66	13.708	1936	1939	1942	rVB4	3992	5738	0.39%	0.048%
67	13.751	1942	1946	1948	rBV5	3980	5992	0.41%	0.050%
68	13.848	1954	1962	1972	rBV	299903	501195	34.30%	4.162%
69	13.970	1979	1982	1986	rBV6	4422	6482	0.44%	0.054%
70	14.019	1988	1990	1991	rVV2	3358	2579	0.18%	0.021%
71	14.062	1991	1997	2002	rVB	21207	37092	2.54%	0.308%
72	14.184	2014	2017	2022	rVB6	3405	5810	0.40%	0.048%
73	14.300	2031	2036	2046	rBV	108088	213698	14.62%	1.775%
74	14.519	2064	2072	2079	rBV	103091	180290	12.34%	1.497%
75	14.714	2097	2104	2109	rBV9	7551	14616	1.00%	0.121%
76	14.775	2109	2114	2119	rBV3	8470	14686	1.00%	0.122%

Data Path : Z:\voasrv\HPCHEM1\MSVOA\_W\Data\VW121024\  
 Data File : VW031191.D  
 Acq On : 10 Dec 2024 15:05  
 Operator : SY/MD  
 Sample : P5153-01RE  
 Misc : 4.61g/10mL/MSVOA\_W/SOIL/B  
 ALS Vial : 16 Sample Multiplier: 1

Instrument :  
 MSVOA\_W  
 ClientSampleId :  
 E28N9RE

Integration Parameters: LSCINT.P

Integrator: RTE  
 Smoothing : OFF  
 Sampling : 1  
 Start Thrs: 0.2  
 Stop Thrs : 0

Filtering: 5  
 Min Area: 0 % of largest Peak  
 Max Peaks: 100  
 Peak Location: TOP

If leading or trailing edge < 100 prefer < Baseline drop else tangent >  
 Peak separation: 5

Method : Z:\voasrv\HPCHEM1\MSVOA\_W\Method\SFAMWLM120424SMA.M  
 Title : SFAM01.0

77	14.842	2119	2125	2128	rBV6	7487	15381	1.05%	0.128%
78	14.940	2136	2141	2146	rBV7	2917	6391	0.44%	0.053%
79	15.062	2157	2161	2165	rBV7	3528	5574	0.38%	0.046%
80	15.123	2165	2171	2176	rBV7	11882	24121	1.65%	0.200%
81	15.171	2176	2179	2180	rBV3	2310	2487	0.17%	0.021%
82	15.238	2187	2190	2197	rVB9	7482	10489	0.72%	0.087%
83	15.360	2206	2210	2211	rBV4	6365	8581	0.59%	0.071%
84	15.385	2211	2214	2217	rVV4	7311	13435	0.92%	0.112%
85	15.427	2217	2221	2222	rVV2	13675	19357	1.32%	0.161%
86	15.458	2222	2226	2234	rVV4	18353	50116	3.43%	0.416%
87	15.543	2234	2240	2247	rVB4	20030	46151	3.16%	0.383%
88	15.616	2248	2252	2257	rBV3	9966	16329	1.12%	0.136%
89	15.677	2260	2262	2266	rVB5	3028	2840	0.19%	0.024%
90	15.714	2266	2268	2270	rBV3	2652	2681	0.18%	0.022%
91	15.866	2288	2293	2295	rVV6	3734	7568	0.52%	0.063%
92	15.891	2295	2297	2299	rVV3	4449	4371	0.30%	0.036%
93	15.933	2302	2304	2311	rBV7	2958	4385	0.30%	0.036%
94	16.007	2311	2316	2327	rBV3	31281	73677	5.04%	0.612%
95	16.141	2330	2338	2348	rBV	188986	377439	25.83%	3.135%
96	16.226	2351	2352	2356	rVB4	4011	4379	0.30%	0.036%
97	16.311	2362	2366	2367	rBV4	3644	3871	0.26%	0.032%
98	16.403	2379	2381	2382	rBV2	3565	3580	0.24%	0.030%
99	16.568	2401	2408	2412	rBV7	9191	21654	1.48%	0.180%
100	16.763	2434	2440	2441	rBV6	3303	4802	0.33%	0.040%

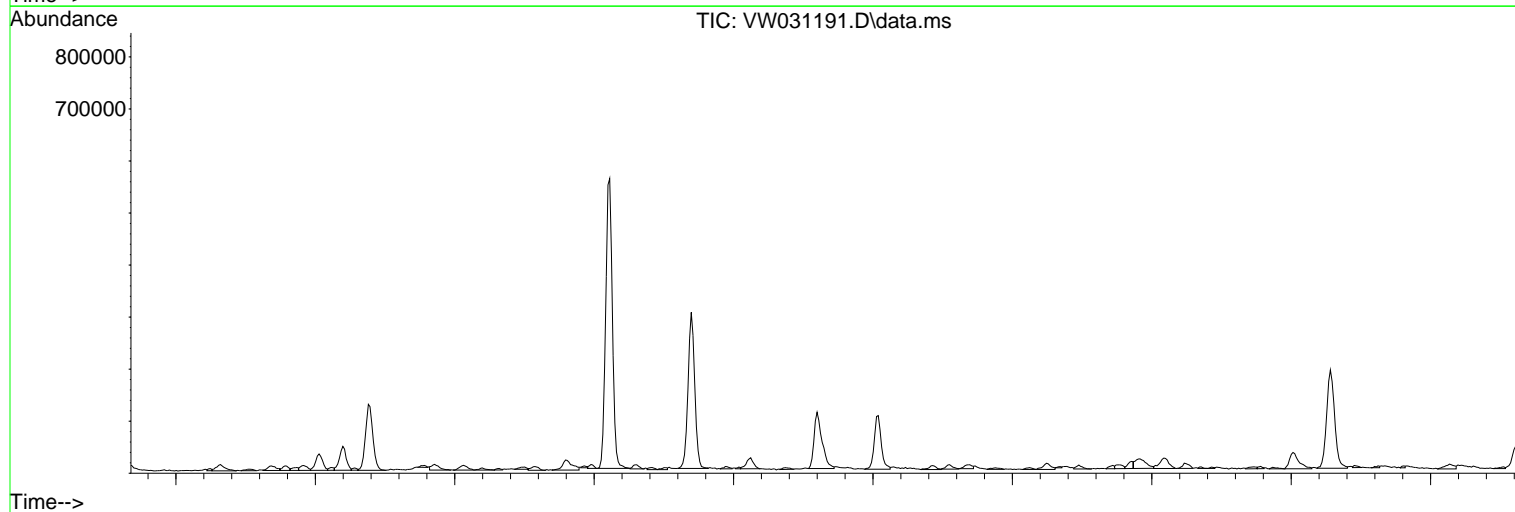
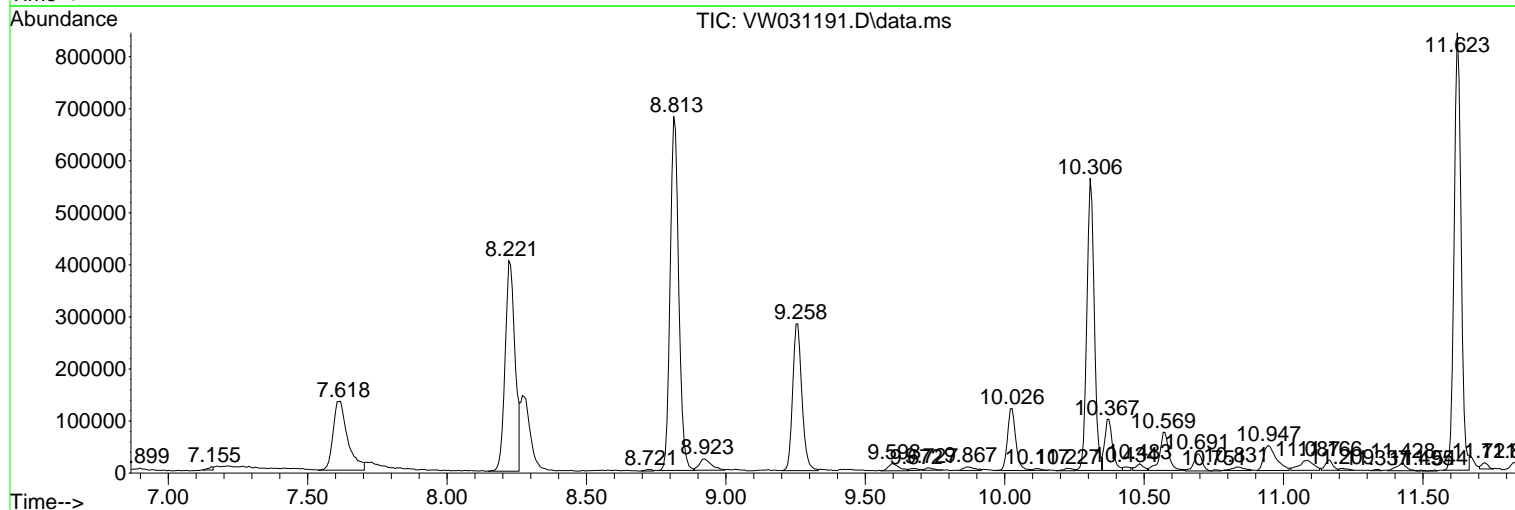
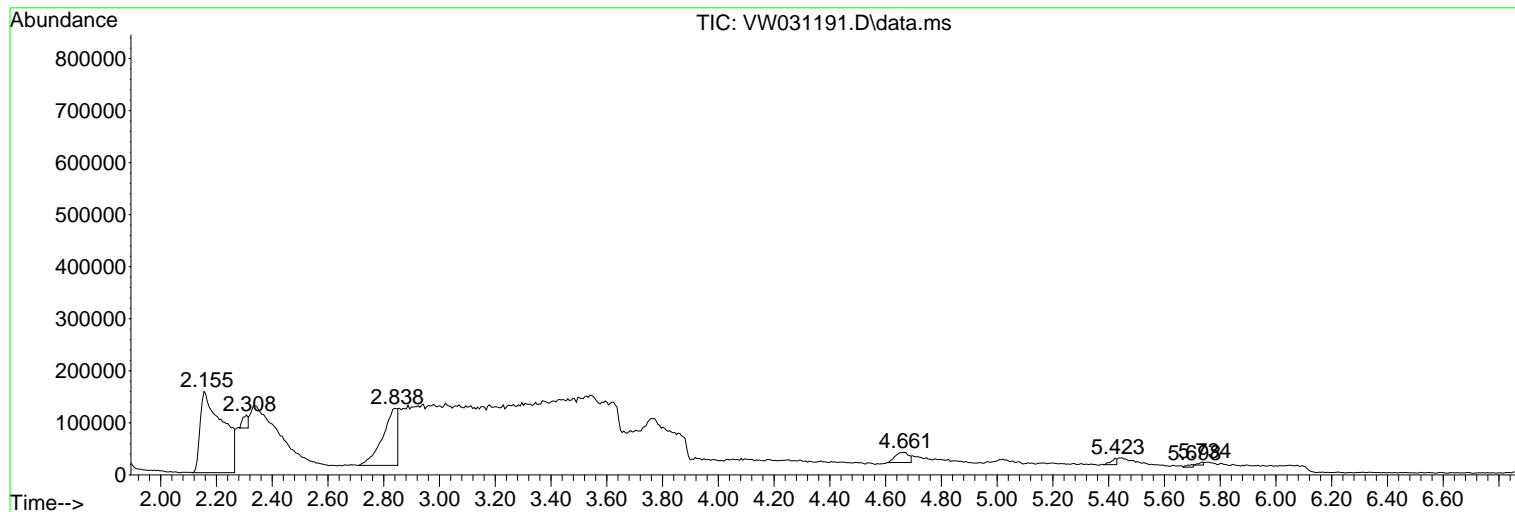
Sum of corrected areas: 12041441

Data Path : Z:\voasrv\HPCHEM1\MSVOA\_W\Data\VW121024\  
 Data File : VW031191.D  
 Acq On : 10 Dec 2024 15:05  
 Operator : SY/MD  
 Sample : P5153-01RE  
 Misc : 4.61g/10mL/MSVOA\_W/SOIL/B  
 ALS Vial : 16 Sample Multiplier: 1

Instrument :  
 MSVOA\_W  
 ClientSampleId :  
 E28N9RE

Quant Method : Z:\voasrv\HPCHEM1\MSVOA\_W\Method\SFAMWLM120424SMA.M  
 Quant Title : SFAM01.0

TIC Library : C:\Database\NIST20.L  
 TIC Integration Parameters: LSCINT.P



Data Path : Z:\voasrv\HPCHEM1\MSVOA\_W\Data\VW121024\  
 Data File : VW031191.D  
 Acq On : 10 Dec 2024 15:05  
 Operator : SY/MD  
 Sample : P5153-01RE  
 Misc : 4.61g/10mL/MSVOA\_W/SOIL/B  
 ALS Vial : 16 Sample Multiplier: 1

Instrument :  
 MSVOA\_W  
 ClientSampleId :  
 E28N9RE

Quant Method : Z:\voasrv\HPCHEM1\MSVOA\_W\Method\SFAMWLM120424SMA.M  
 Quant Title : SFAM01.0

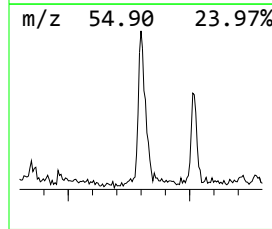
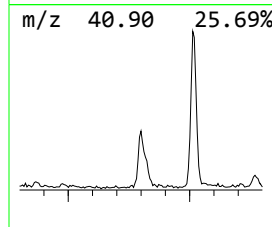
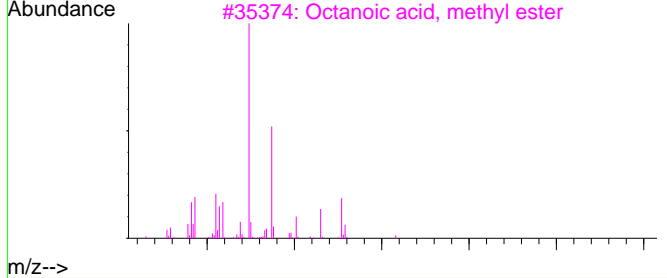
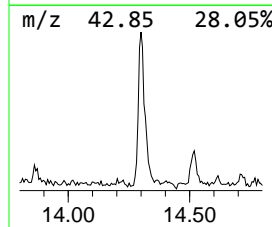
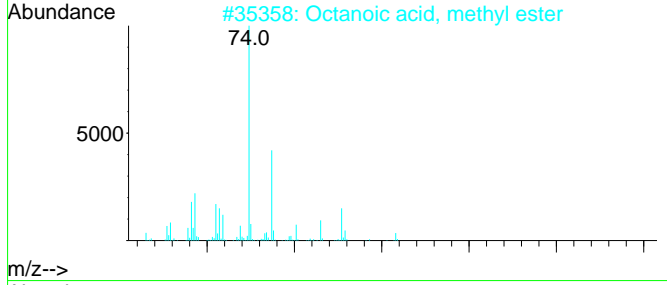
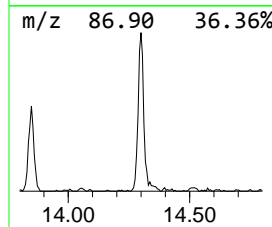
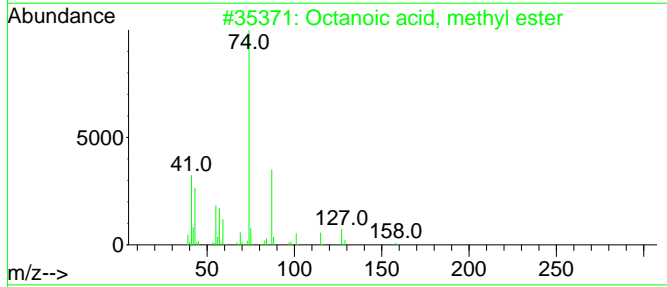
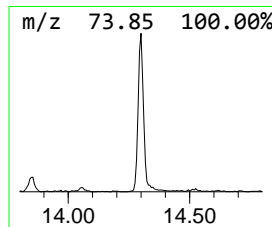
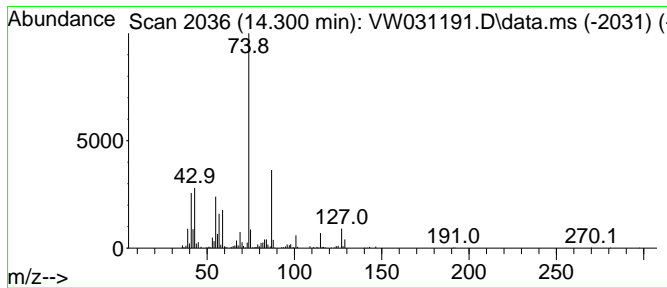
TIC Library : C:\Database\NIST20.L  
 TIC Integration Parameters: LSCINT.P

\*\*\*\*\*  
 Peak Number 5 Octanoic acid, methyl ester Concentration Rank 3

R.T.	EstConc	Area	Relative to ISTD	R.T.
14.300	5.78 ug/L	213698	1,4-Dichlorobenzene-d4	13.556

Hit# of 5	Tentative ID	MW	MolForm	CAS#	Qual
1	Octanoic acid, methyl ester	158	C9H18O2	000111-11-5	90
2	Octanoic acid, methyl ester	158	C9H18O2	000111-11-5	83
3	Octanoic acid, methyl ester	158	C9H18O2	000111-11-5	83
4	Nonanoic acid, methyl ester	172	C10H20O2	001731-84-6	78
5	Octanoic acid, methyl ester	158	C9H18O2	000111-11-5	78



Data Path : Z:\voasrv\HPCHEM1\MSVOA\_W\Data\VW121024\  
 Data File : VW031191.D  
 Acq On : 10 Dec 2024 15:05  
 Operator : SY/MD  
 Sample : P5153-01RE  
 Misc : 4.61g/10mL/MSVOA\_W/SOIL/B  
 ALS Vial : 16 Sample Multiplier: 1

Instrument :  
 MSVOA\_W  
 ClientSampleId :  
 E28N9RE

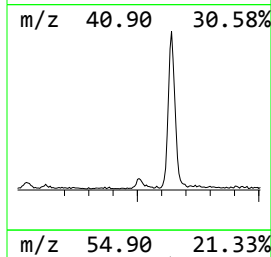
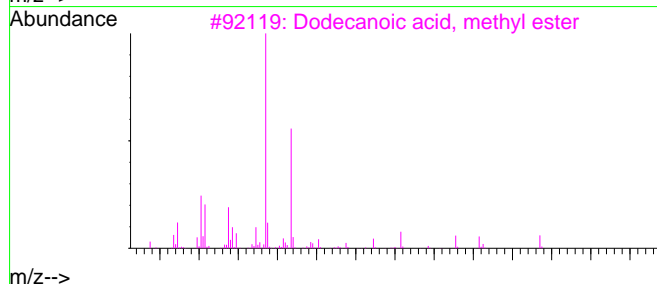
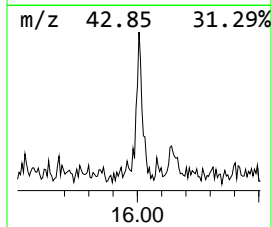
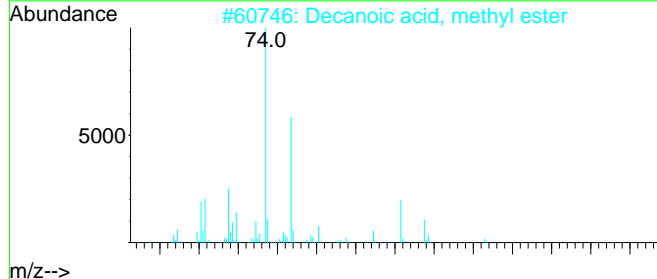
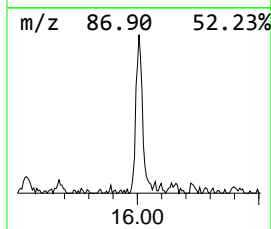
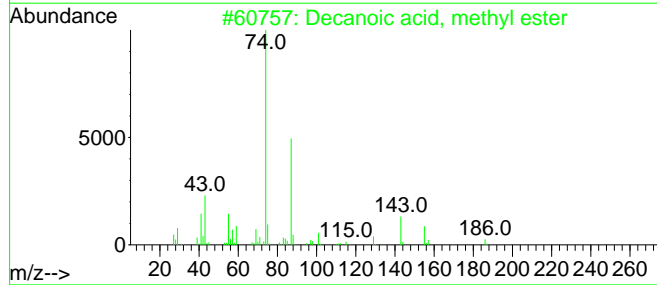
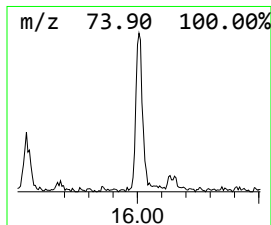
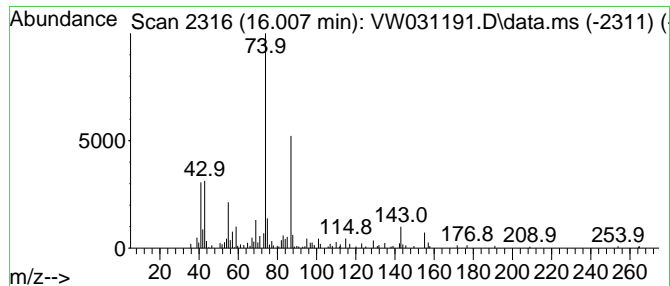
Quant Method : Z:\voasrv\HPCHEM1\MSVOA\_W\Method\SFAMWLM120424SMA.M  
 Quant Title : SFAM01.0

TIC Library : C:\Database\NIST20.L  
 TIC Integration Parameters: LSCINT.P

\*\*\*\*\*  
 Peak Number 8 Decanoic acid, methyl ester Concentration Rank 7

R.T.	EstConc	Area	Relative to ISTD	R.T.
16.007	1.99 ug/L	73677	1,4-Dichlorobenzene-d4	13.556

Hit# of 5	Tentative ID	MW	MolForm	CAS#	Qual
1	Decanoic acid, methyl ester	186	C11H22O2	000110-42-9	90
2	Decanoic acid, methyl ester	186	C11H22O2	000110-42-9	90
3	Dodecanoic acid, methyl ester	214	C13H26O2	000111-82-0	86
4	Tridecanoic acid, methyl ester	228	C14H28O2	001731-88-0	86
5	Decanoic acid, methyl ester	186	C11H22O2	000110-42-9	83



Data Path : Z:\voasrv\HPCHEM1\MSVOA\_W\Data\VW121024\  
Data File : VW031191.D  
Acq On : 10 Dec 2024 15:05  
Operator : SY/MD  
Sample : P5153-01RE  
Misc : 4.61g/10mL/MSVOA\_W/SOIL/B  
ALS Vial : 16 Sample Multiplier: 1

Instrument :  
MSVOA\_W  
ClientSampleId :  
E28N9RE

Quant Method : Z:\voasrv\HPCHEM1\MSVOA\_W\Method\SFAMWLM120424SMA.M  
Quant Title : SFAM01.0

TIC Library : C:\Database\NIST0.L  
TIC Integration Parameters: LSCINT.P

TIC Top Hit name	RT	EstConc	Units	Response	--Internal Standard--			
					#	RT	Resp	Conc
Octanoic acid, ...	14.300	5.8	ug/L	213698	3	13.556	924554	25.0
Decanoic acid, ...	16.007	2.0	ug/L	73677	3	13.556	924554	25.0