

Data Path : Z:\voasrv\HPCHEM1\MSVOA_W\Data\VW121025\
 Data File : VW032613.D
 Acq On : 10 Dec 2025 13:03
 Operator : SY/MD
 Sample : VIBLK
 Misc : 5.00g/5mL/MSVOA_W/SOIL
 ALS Vial : 1 Sample Multiplier: 1

Instrument :
 MSVOA_W
 ClientSampleId :
 VIBLK

Quant Time: Dec 11 01:59:37 2025
 Quant Method : Z:\voasrv\HPCHEM1\MSVOA_W\Method\82W121025S.M
 Quant Title : SW846 8260
 QLast Update : Thu Dec 11 01:56:28 2025
 Response via : Initial Calibration

Compound	R.T.	QIon	Response	Conc	Units	Dev(Min)

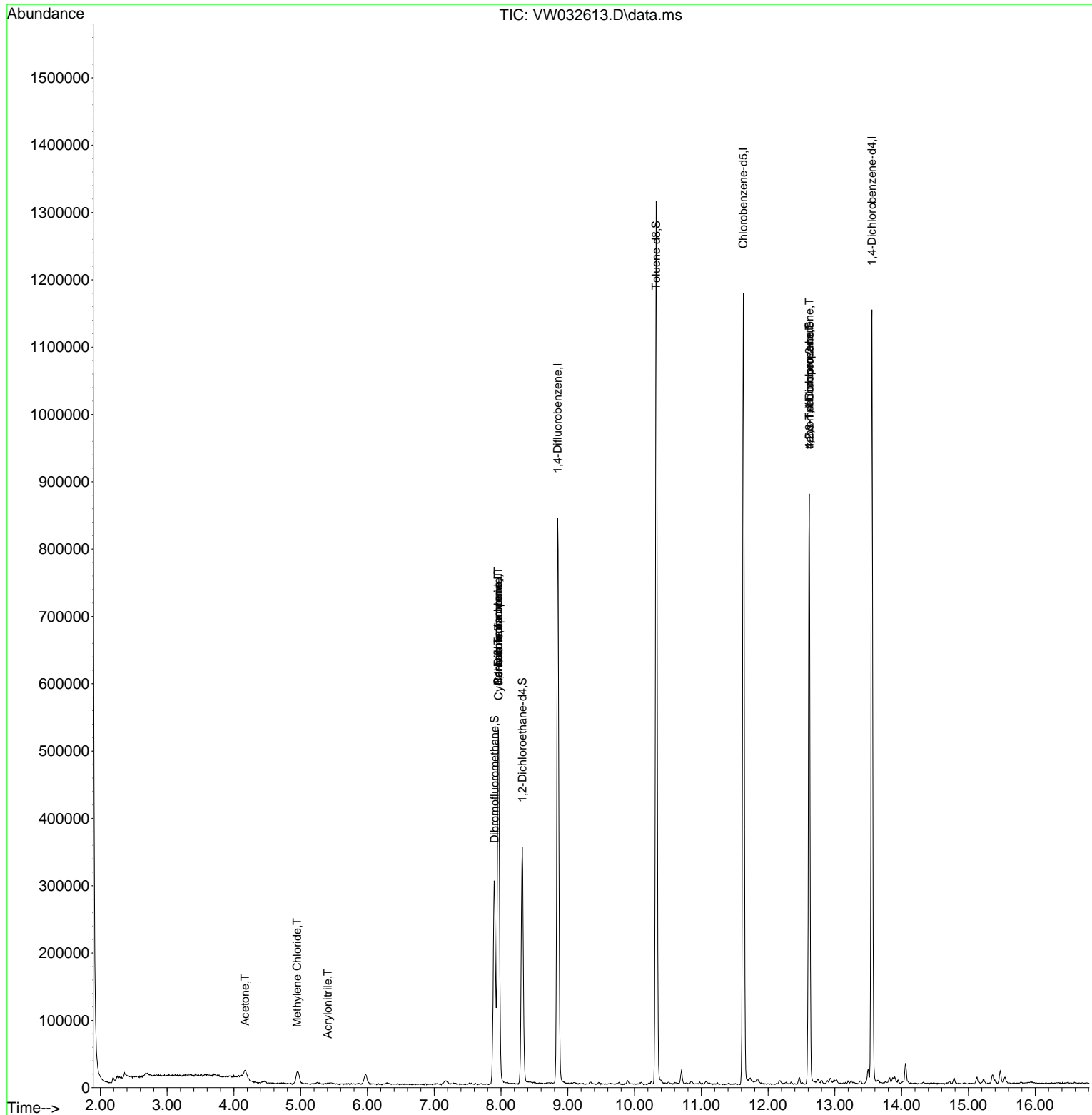
Internal Standards						
1) Pentafluorobenzene	7.959	168	370968	50.000	ug/l	0.00
34) 1,4-Difluorobenzene	8.849	114	700147	50.000	ug/l	0.00
63) Chlorobenzene-d5	11.629	117	625651	50.000	ug/l	0.00
72) 1,4-Dichlorobenzene-d4	13.556	152	299354	50.000	ug/l	0.00
System Monitoring Compounds						
33) 1,2-Dichloroethane-d4	8.319	65	286681	49.207	ug/l	0.00
Spiked Amount	50.000	Range 63 - 155	Recovery =	98.420%		
35) Dibromofluoromethane	7.904	113	227755	45.929	ug/l	0.00
Spiked Amount	50.000	Range 70 - 134	Recovery =	91.860%		
50) Toluene-d8	10.325	98	849884	47.299	ug/l	0.00
Spiked Amount	50.000	Range 74 - 123	Recovery =	94.600%		
62) 4-Bromofluorobenzene	12.617	95	306426	46.449	ug/l	0.00
Spiked Amount	50.000	Range 17 - 146	Recovery =	92.900%		
Target Compounds						
						Qvalue
15) Acrylonitrile	5.405	53	1938	1.220	ug/l	97
16) Acetone	4.167	43	21950	11.294	ug/l	96
20) Methylene Chloride	4.948	84	15591	2.628	ug/l	86
31) Cyclohexane	7.965	56	11007	1.232	ug/l #	1
36) 1,1-Dichloropropene	7.959	75	35694	4.952	ug/l #	44
38) Carbon Tetrachloride	7.959	117	41784	6.267	ug/l #	18
58) 2-Chloroethyl Vinyl ether	9.935	63	703	Below Cal	#	82
76) 1,2,3-Trichloropropane	12.617	75	159831	39.789	ug/l #	1
81) trans-1,4-Dichloro-2-b...	12.617	75	159831	85.561	ug/l #	7
95) Naphthalene	15.360	128	11705	Below Cal	#	96

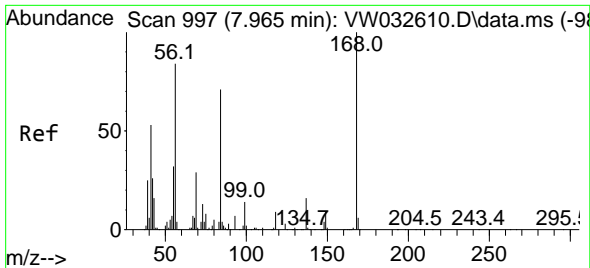
(#) = qualifier out of range (m) = manual integration (+) = signals summed

Data Path : Z:\voasrv\HPCHEM1\MSVOA_W\Data\VW121025\
 Data File : VW032613.D
 Acq On : 10 Dec 2025 13:03
 Operator : SY/MD
 Sample : VIBLK
 Misc : 5.00g/5mL/MSVOA_W/SOIL
 ALS Vial : 1 Sample Multiplier: 1

Instrument :
 MSVOA_W
 ClientSampleId :
 VIBLK

Quant Time: Dec 11 01:59:37 2025
 Quant Method : Z:\voasrv\HPCHEM1\MSVOA_W\Method\82W121025S.M
 Quant Title : SW846 8260
 QLast Update : Thu Dec 11 01:56:28 2025
 Response via : Initial Calibration

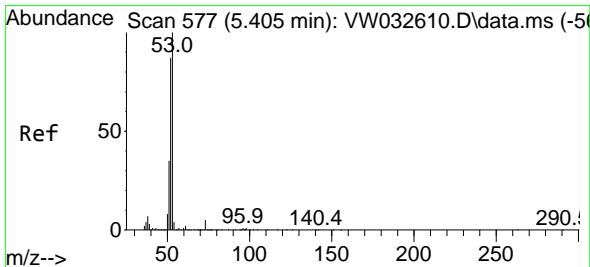
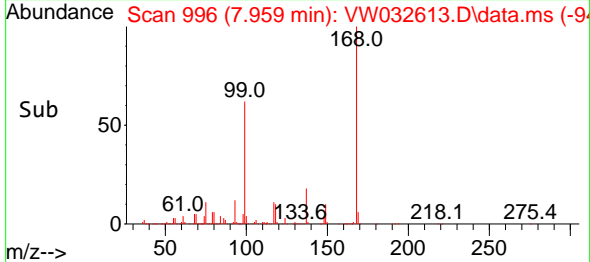
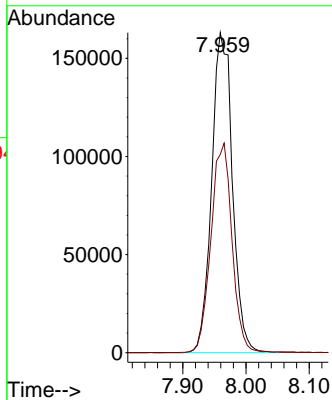
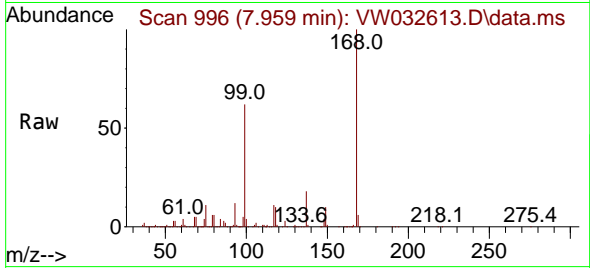




#1
 Pentafluorobenzene
 Concen: 50.000 ug/l
 RT: 7.959 min Scan# 996
 Delta R.T. -0.006 min
 Lab File: VW032613.D
 Acq: 10 Dec 2025 13:03

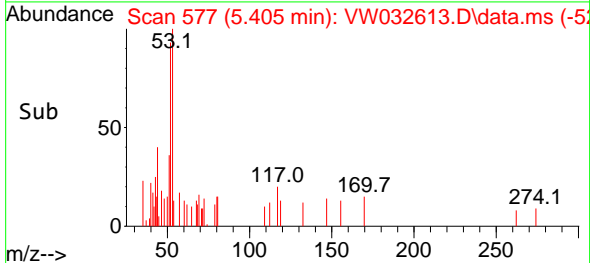
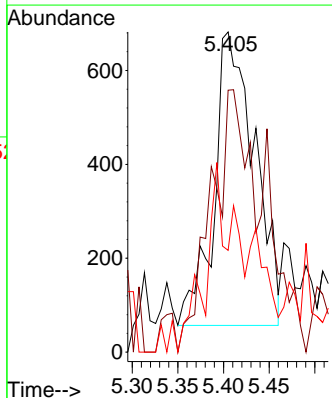
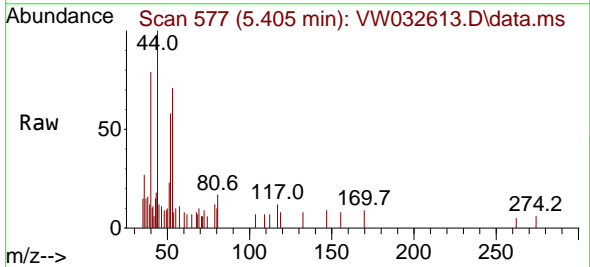
Instrument :
 MSVOA_W
 ClientSampleId :
 VIBLK

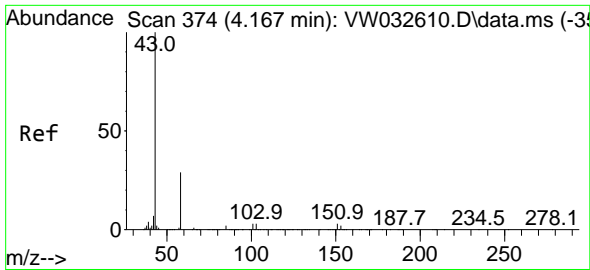
Tgt Ion:168 Resp: 370968
 Ion Ratio Lower Upper
 168 100
 99 61.9 47.8 71.8



#15
 Acrylonitrile
 Concen: 1.220 ug/l
 RT: 5.405 min Scan# 577
 Delta R.T. 0.000 min
 Lab File: VW032613.D
 Acq: 10 Dec 2025 13:03

Tgt Ion: 53 Resp: 1938
 Ion Ratio Lower Upper
 53 100
 52 83.4 66.7 100.1
 51 32.1 29.8 44.6

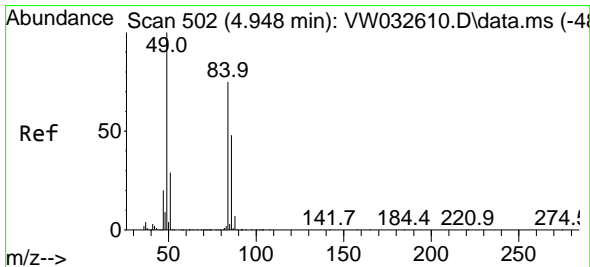
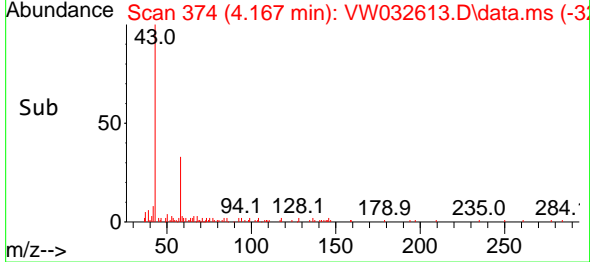
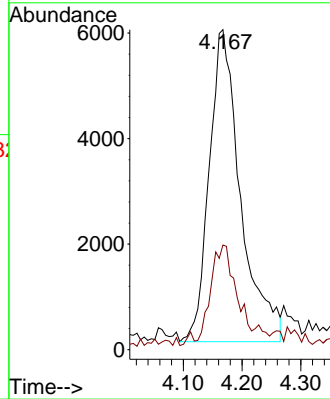
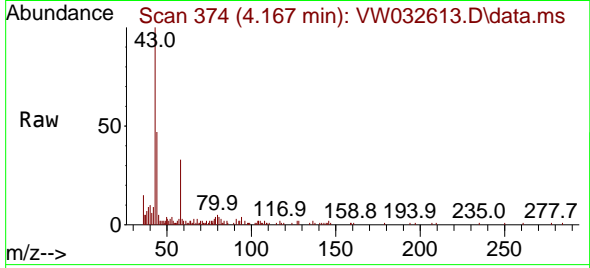




#16
 Acetone
 Concen: 11.294 ug/l
 RT: 4.167 min Scan# 31
 Delta R.T. 0.000 min
 Lab File: VW032613.D
 Acq: 10 Dec 2025 13:03

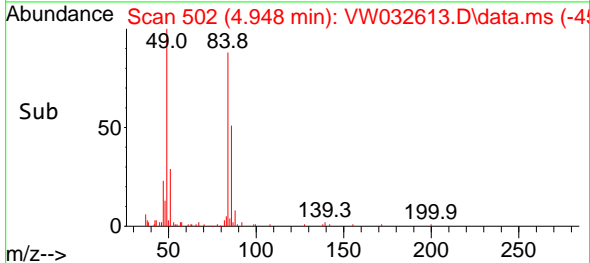
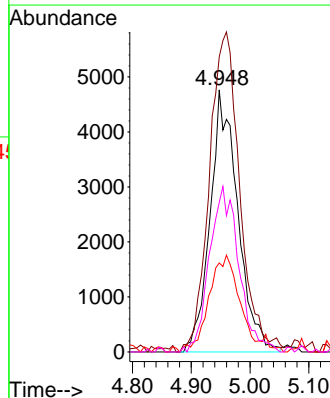
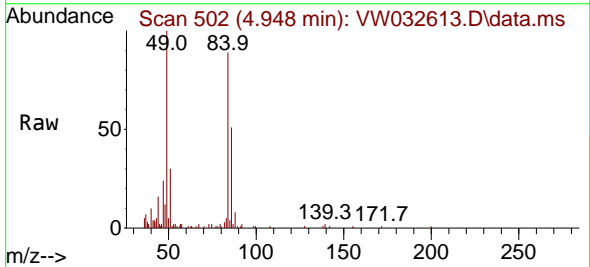
Instrument :
 MSVOA_W
 ClientSampleId :
 VIBLK

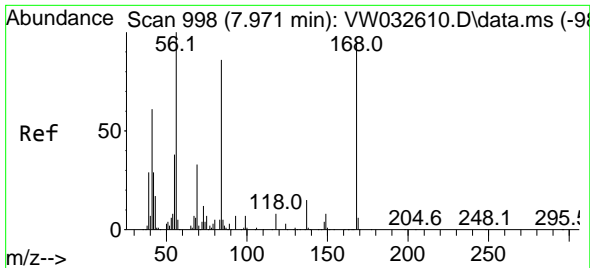
Tgt Ion: 43 Resp: 21950
 Ion Ratio Lower Upper
 43 100
 58 32.2 23.9 35.9



#20
 Methylene Chloride
 Concen: 2.628 ug/l
 RT: 4.948 min Scan# 502
 Delta R.T. 0.000 min
 Lab File: VW032613.D
 Acq: 10 Dec 2025 13:03

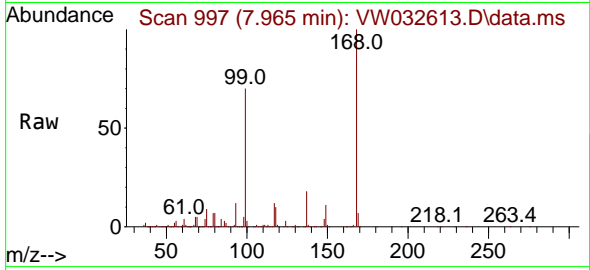
Tgt Ion: 84 Resp: 15591
 Ion Ratio Lower Upper
 84 100
 49 112.6 106.9 160.3
 51 33.9 31.4 47.2
 86 57.0 51.1 76.7



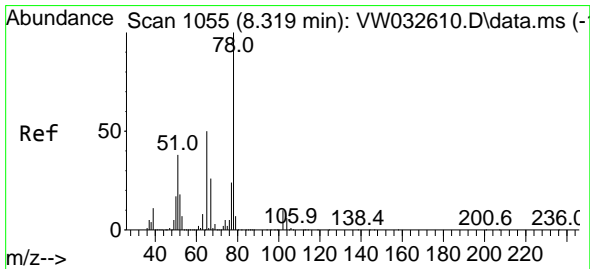
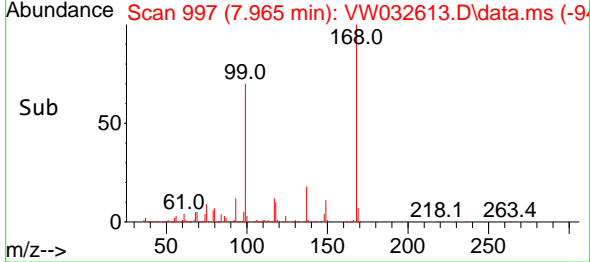
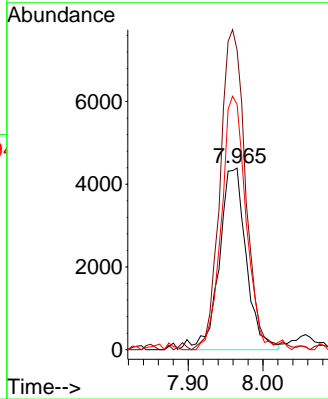


#31
 Cyclohexane
 Concen: 1.232 ug/l
 RT: 7.965 min Scan# 998
 Delta R.T. -0.006 min
 Lab File: VW032613.D
 Acq: 10 Dec 2025 13:03

Instrument : MSVOA_W
 ClientSampleId : VIBLK

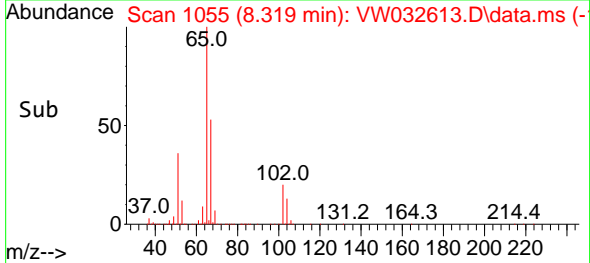
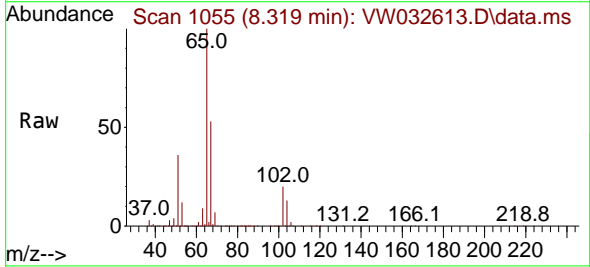
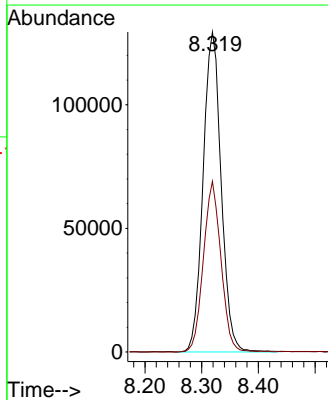


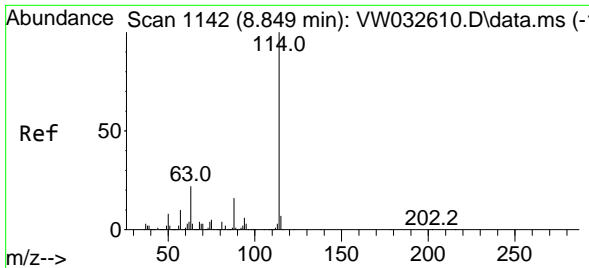
Tgt Ion: 56 Resp: 11007
 Ion Ratio Lower Upper
 56 100
 69 163.8 26.2 39.2#
 84 133.8 68.9 103.3#



#33
 1,2-Dichloroethane-d4
 Concen: 49.207 ug/l
 RT: 8.319 min Scan# 1055
 Delta R.T. 0.000 min
 Lab File: VW032613.D
 Acq: 10 Dec 2025 13:03

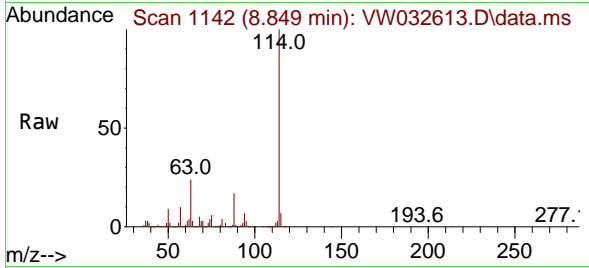
Tgt Ion: 65 Resp: 286681
 Ion Ratio Lower Upper
 65 100
 67 51.7 0.0 105.6





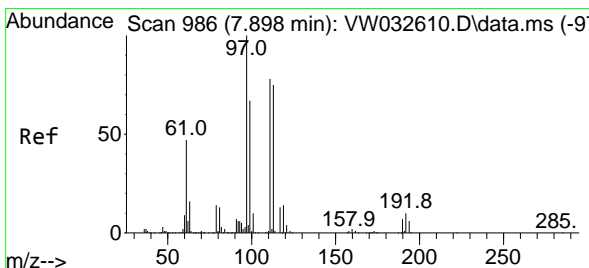
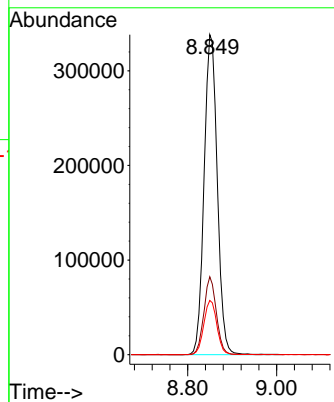
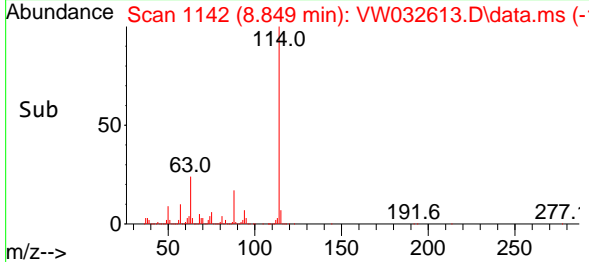
#34
 1,4-Difluorobenzene
 Concen: 50.000 ug/l
 RT: 8.849 min Scan# 1142
 Delta R.T. 0.000 min
 Lab File: VW032613.D
 Acq: 10 Dec 2025 13:03

Instrument : MSVOA_W
 ClientSampleId : VIBLK

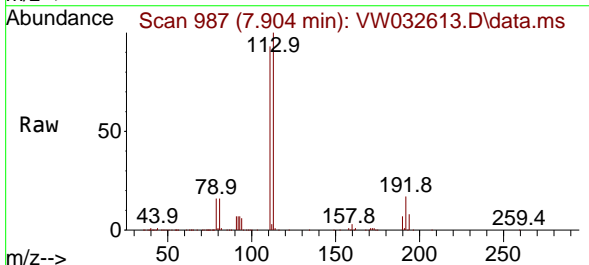


Tgt Ion:114 Resp: 700147

Ion	Ratio	Lower	Upper
114	100		
63	24.3	0.0	44.6
88	16.9	0.0	31.8

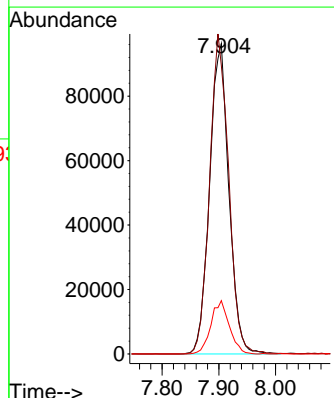
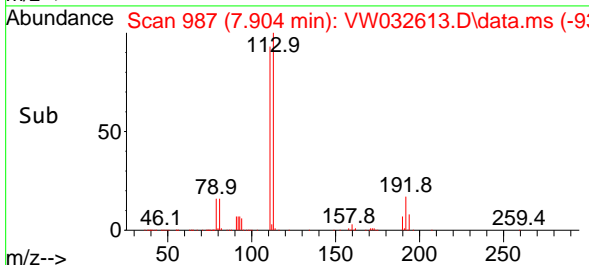


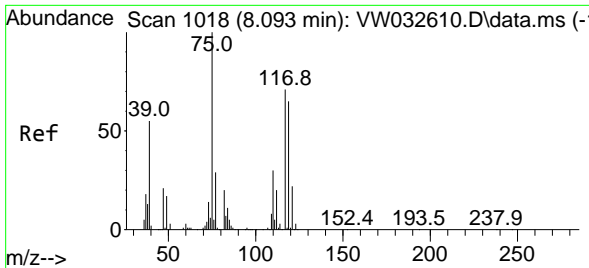
#35
 Dibromofluoromethane
 Concen: 45.929 ug/l
 RT: 7.904 min Scan# 987
 Delta R.T. 0.006 min
 Lab File: VW032613.D
 Acq: 10 Dec 2025 13:03



Tgt Ion:113 Resp: 227755

Ion	Ratio	Lower	Upper
113	100		
111	101.7	85.2	127.8
192	16.4	13.3	19.9

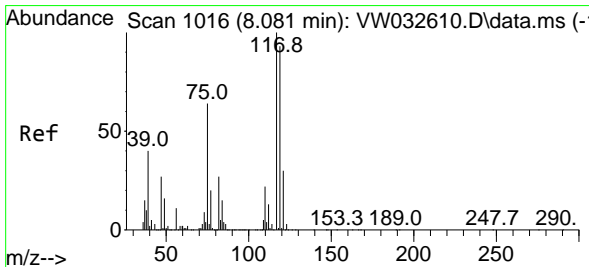
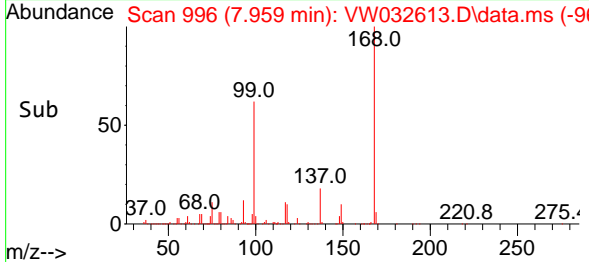
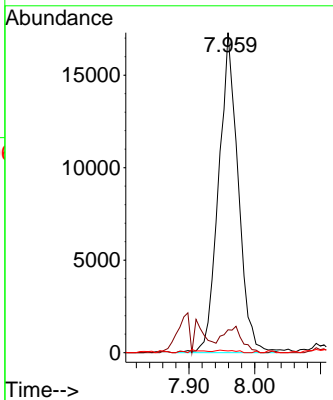
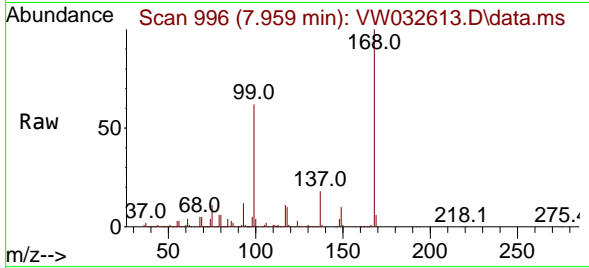




#36
 1,1-Dichloropropene
 Concen: 4.952 ug/l
 RT: 7.959 min Scan# 996
 Delta R.T. -0.134 min
 Lab File: VW032613.D
 Acq: 10 Dec 2025 13:03

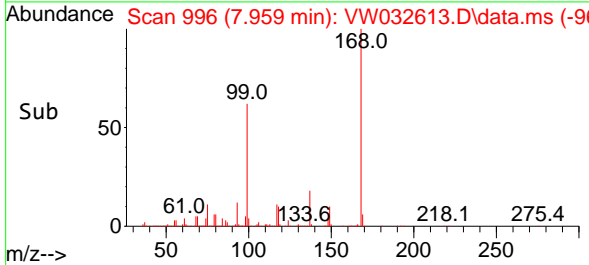
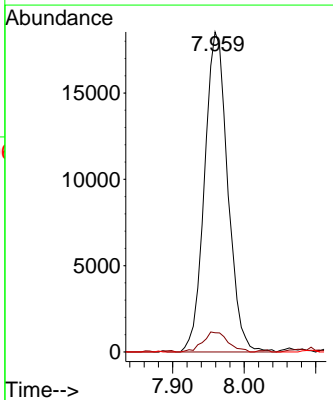
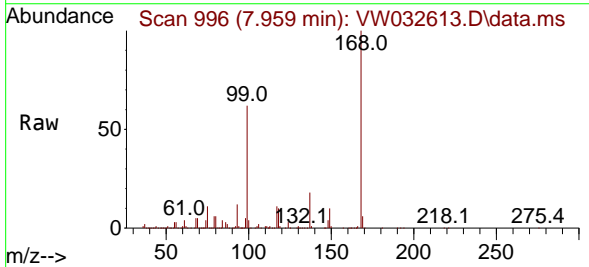
Instrument :
 MSVOA_W
 ClientSampleId :
 VIBLK

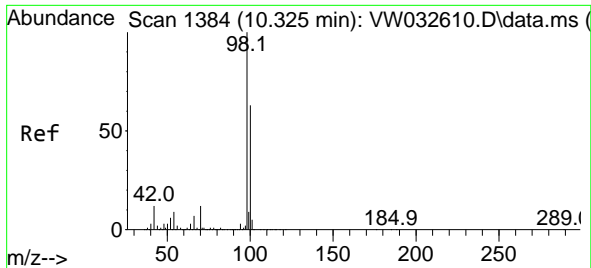
Tgt Ion	Resp	Lower	Upper
75	35694		
110	0.0	16.3	48.9#
77	0.8	24.6	37.0#



#38
 Carbon Tetrachloride
 Concen: 6.267 ug/l
 RT: 7.959 min Scan# 996
 Delta R.T. -0.122 min
 Lab File: VW032613.D
 Acq: 10 Dec 2025 13:03

Tgt Ion	Resp	Lower	Upper
117	41784		
119	6.0	74.3	111.5#
121	0.0	23.6	35.4#

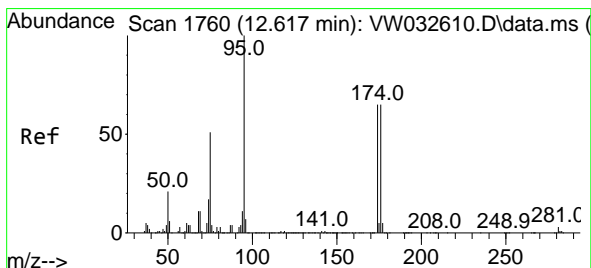
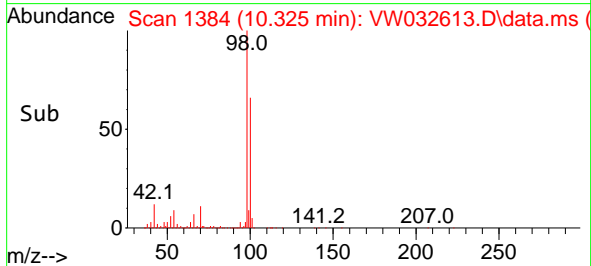
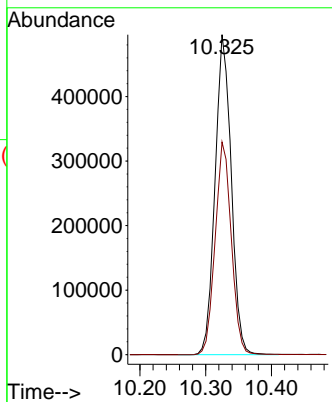
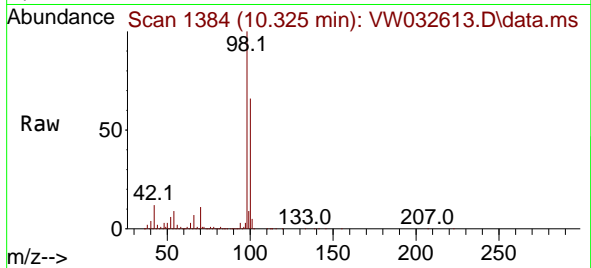




#50
 Toluene-d8
 Concen: 47.299 ug/l
 RT: 10.325 min Scan# 11
 Delta R.T. 0.000 min
 Lab File: VW032613.D
 Acq: 10 Dec 2025 13:03

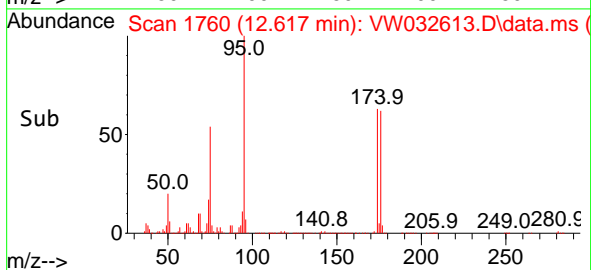
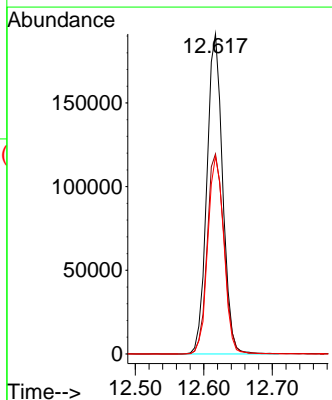
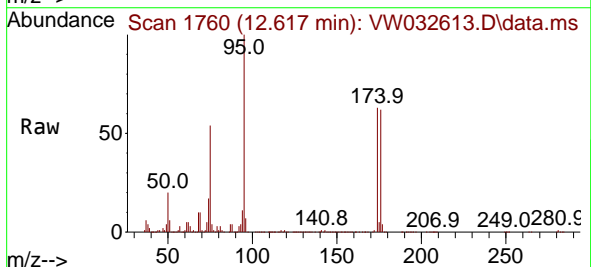
Instrument :
 MSVOA_W
 ClientSampleId :
 VIBLK

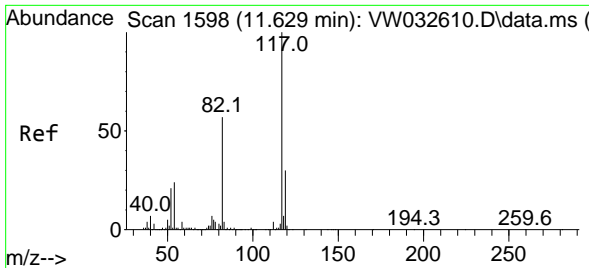
Tgt Ion: 98 Resp: 849884
 Ion Ratio Lower Upper
 98 100
 100 66.5 52.2 78.2



#62
 4-Bromofluorobenzene
 Concen: 46.449 ug/l
 RT: 12.617 min Scan# 1760
 Delta R.T. 0.000 min
 Lab File: VW032613.D
 Acq: 10 Dec 2025 13:03

Tgt Ion: 95 Resp: 306426
 Ion Ratio Lower Upper
 95 100
 174 66.7 0.0 135.0
 176 62.9 0.0 123.4

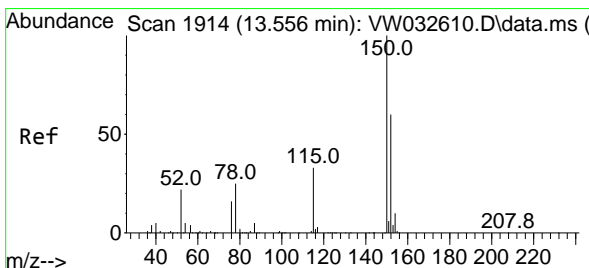
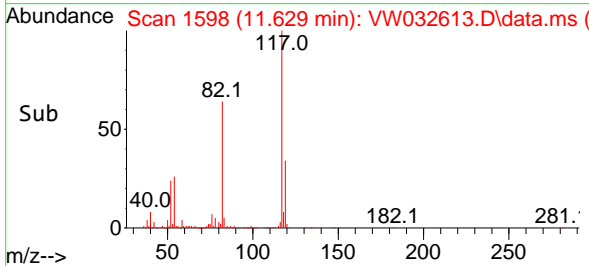
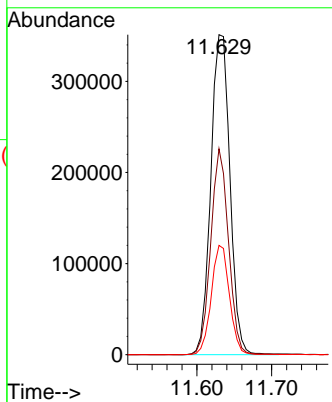
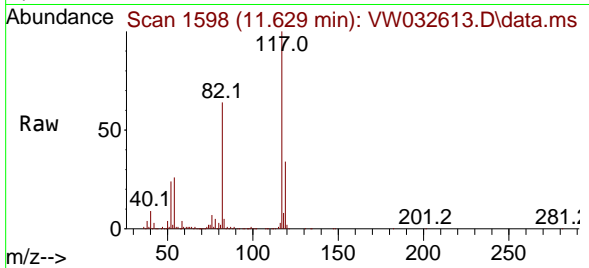




#63
 Chlorobenzene-d5
 Concen: 50.000 ug/l
 RT: 11.629 min Scan# 1170
 Delta R.T. 0.000 min
 Lab File: VW032613.D
 Acq: 10 Dec 2025 13:03

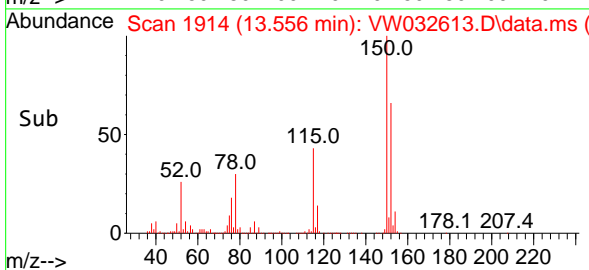
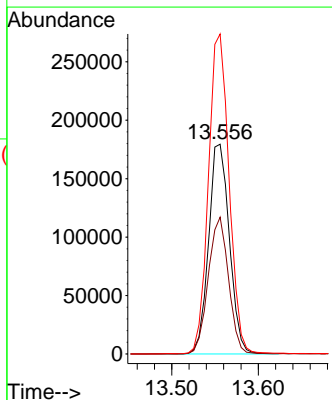
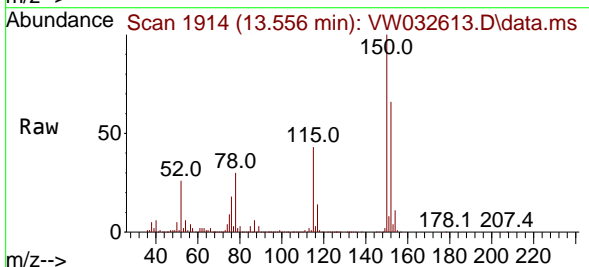
Instrument : MSVOA_W
 ClientSampleId : VIBLK

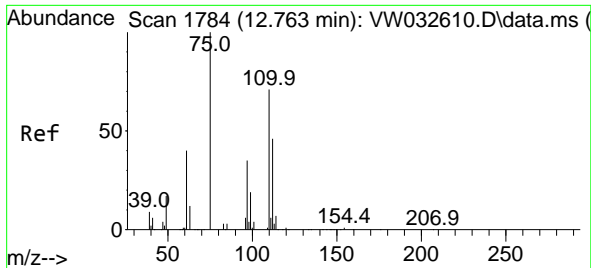
Tgt Ion	Resp	Lower	Upper
117	100		
82	64.3	45.5	68.3
119	34.2	23.8	35.8



#72
 1,4-Dichlorobenzene-d4
 Concen: 50.000 ug/l
 RT: 13.556 min Scan# 1914
 Delta R.T. 0.000 min
 Lab File: VW032613.D
 Acq: 10 Dec 2025 13:03

Tgt Ion	Resp	Lower	Upper
152	100		
115	63.3	33.8	101.3
150	151.8	0.0	369.4

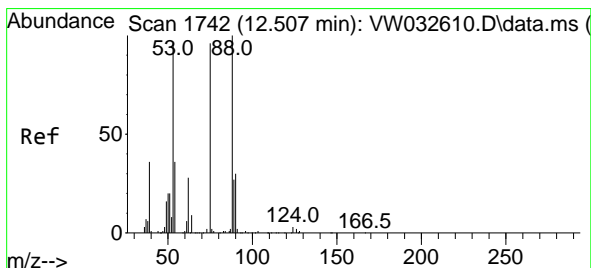
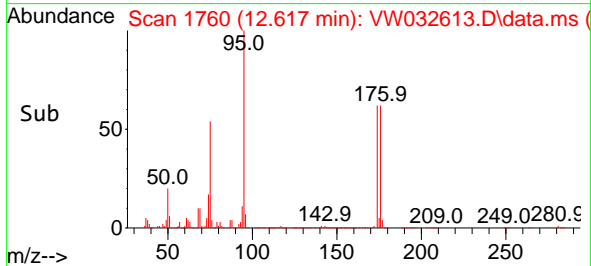
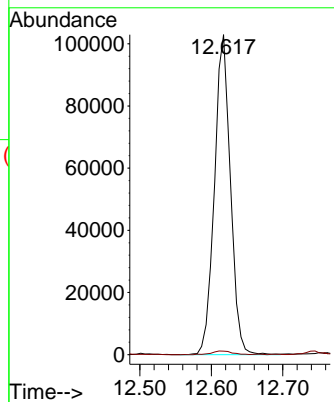
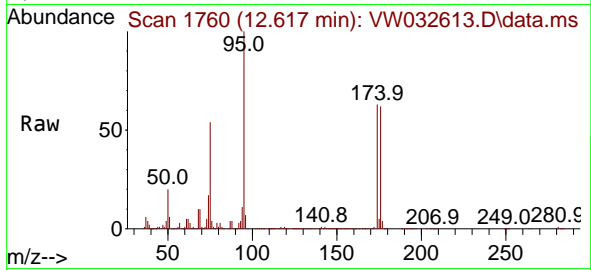




#76
 1,2,3-Trichloropropane
 Concen: 39.789 ug/l
 RT: 12.617 min Scan# 1760
 Delta R.T. -0.146 min
 Lab File: VW032613.D
 Acq: 10 Dec 2025 13:03

Instrument : MSVOA_W
 ClientSampleId : VIBLK

Tgt Ion: 75 Resp: 159831
 Ion Ratio Lower Upper
 75 100
 77 1.5 154.0 462.0#



#81
 trans-1,4-Dichloro-2-butene
 Concen: 85.561 ug/l
 RT: 12.617 min Scan# 1760
 Delta R.T. 0.110 min
 Lab File: VW032613.D
 Acq: 10 Dec 2025 13:03

Tgt Ion: 75 Resp: 159831
 Ion Ratio Lower Upper
 75 100
 53 0.2 86.1 129.1#
 89 0.0 37.4 56.2#

