

Data Path : Z:\voasrv\HPCHEM1\MSVOA_W\Data\VW121121\
 Data File : VW021319.D
 Acq On : 11 Dec 2021 12:03
 Operator : SY/VA
 Sample : M5004-04
 Misc : 6.79g/10.0mL/MSVOA_W/SOIL
 ALS Vial : 1 Sample Multiplier: 1

Instrument :
 MSVOA_W
ClientSampleId :
 BGKW3

Quant Time: Dec 12 08:07:16 2021
 Quant Method : Z:\voasrv\HPCHEM1\MSVOA_W\Method\SFAMWLM120921SMA.M
 Quant Title : SFAM01.0
 QLast Update : Fri Dec 10 23:12:45 2021
 Response via : Initial Calibration

Compound	R.T.	QIon	Response	Conc	Units	Dev(Min)

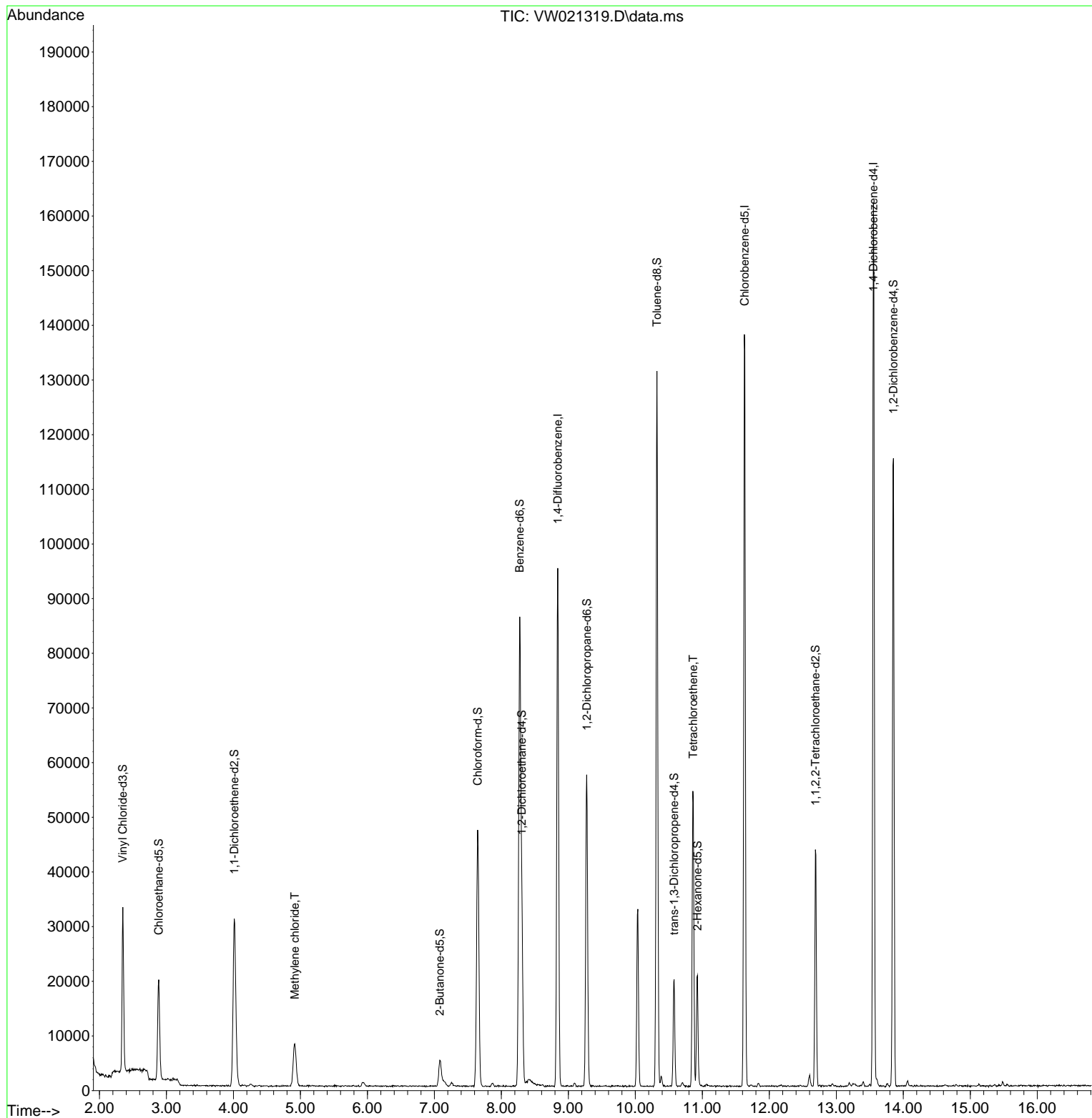
Internal Standards						
1) 1,4-Difluorobenzene	8.842	114	79915	25.000	ug/L	# 0.00
28) Chlorobenzene-d5	11.634	117	79545	25.000	ug/L	0.00
58) 1,4-Dichlorobenzene-d4	13.554	152	43858	25.000	ug/L	0.00
System Monitoring Compounds						
4) Vinyl Chloride-d3	2.349	65	29125	20.011	ug/L	0.00
Spiked Amount	25.000	Range 30 - 150	Recovery	=	80.040%	
7) Chloroethane-d5	2.885	69	21606	22.455	ug/L	0.00
Spiked Amount	25.000	Range 30 - 150	Recovery	=	89.840%	
11) 1,1-Dichloroethene-d2	4.013	63	28875	14.881	ug/L	0.00
Spiked Amount	25.000	Range 45 - 110	Recovery	=	59.520%	
21) 2-Butanone-d5	7.080	46	8978	43.760	ug/L	0.00
Spiked Amount	50.000	Range 20 - 135	Recovery	=	87.520%	
24) Chloroform-d	7.647	84	46255	20.770	ug/L	0.00
Spiked Amount	25.000	Range 40 - 150	Recovery	=	83.080%	
26) 1,2-Dichloroethane-d4	8.305	65	23398	19.751	ug/L	0.00
Spiked Amount	25.000	Range 70 - 130	Recovery	=	79.000%	
32) Benzene-d6	8.275	84	86087	19.744	ug/L	0.00
Spiked Amount	25.000	Range 20 - 135	Recovery	=	78.960%	
36) 1,2-Dichloropropane-d6	9.274	67	24487	20.941	ug/L	0.00
Spiked Amount	25.000	Range 70 - 120	Recovery	=	83.760%	
41) Toluene-d8	10.323	98	84239	18.909	ug/L	0.00
Spiked Amount	25.000	Range 30 - 130	Recovery	=	75.640%	
43) trans-1,3-Dichloroprop...	10.579	79	10735	19.938	ug/L	0.00
Spiked Amount	25.000	Range 30 - 135	Recovery	=	79.760%	
47) 2-Hexanone-d5	10.927	63	6980	40.367	ug/L	0.00
Spiked Amount	50.000	Range 20 - 135	Recovery	=	80.740%	
56) 1,1,2,2-Tetrachloroeth...	12.688	84	19929	19.826	ug/L	0.00
Spiked Amount	25.000	Range 45 - 120	Recovery	=	79.320%	
66) 1,2-Dichlorobenzene-d4	13.853	152	31774	18.693	ug/L	0.00
Spiked Amount	25.000	Range 75 - 120	Recovery	=	74.760%#	
Target Compounds						
16) Methylene chloride	4.915	84	6390	4.839	ug/L	87
46) Tetrachloroethene	10.866	164	12579	10.886	ug/L	93

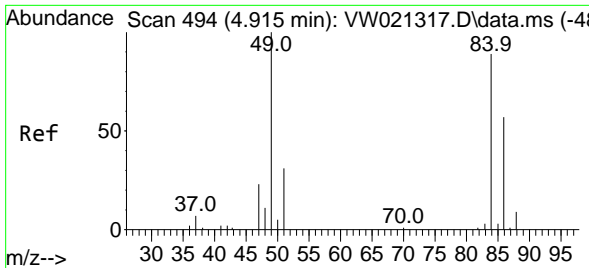
(#) = qualifier out of range (m) = manual integration (+) = signals summed

Data Path : Z:\voasrv\HPCHEM1\MSVOA_W\Data\VW121121\
Data File : VW021319.D
Acq On : 11 Dec 2021 12:03
Operator : SY/VA
Sample : M5004-04
Misc : 6.79g/10.0mL/MSVOA_W/SOIL
ALS Vial : 1 Sample Multiplier: 1

Instrument :
MSVOA_W
ClientSampleId :
BGKW3

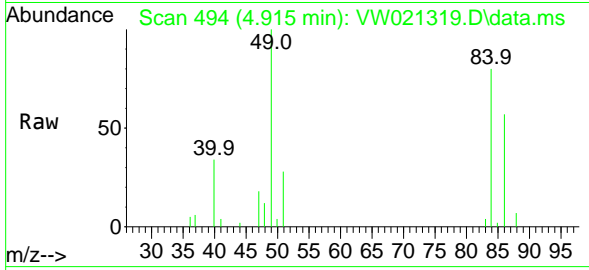
Quant Time: Dec 12 08:07:16 2021
Quant Method : Z:\voasrv\HPCHEM1\MSVOA_W\Method\SFAMWLM120921SMA.M
Quant Title : SFAM01.0
QLast Update : Fri Dec 10 23:12:45 2021
Response via : Initial Calibration



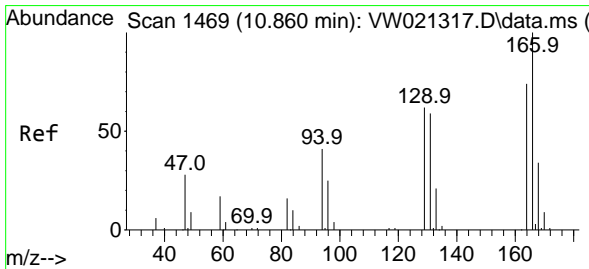
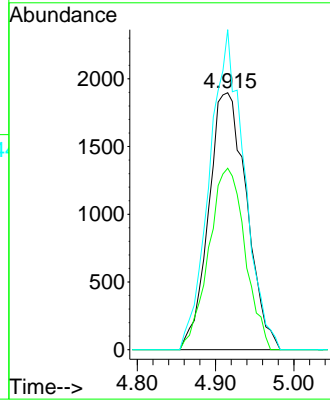
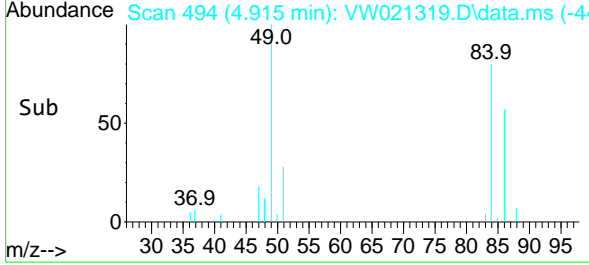


#16
 Methylene chloride
 Concen: 4.839 ug/L
 RT: 4.915 min Scan# 491
 Delta R.T. -0.000 min
 Lab File: VW021319.D
 Acq: 11 Dec 2021 12:03

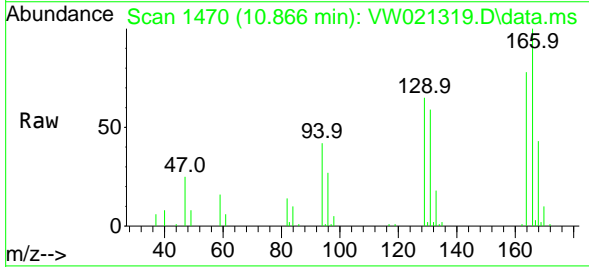
Instrument :
 MSVOA_W
 ClientSampleId :
 BGKW3



Tgt Ion: 84 Resp: 6390
 Ion Ratio Lower Upper
 84 100
 86 70.6 45.5 84.5
 49 124.6 100.5 186.7



#46
 Tetrachloroethene
 Concen: 10.886 ug/L
 RT: 10.866 min Scan# 1470
 Delta R.T. 0.006 min
 Lab File: VW021319.D
 Acq: 11 Dec 2021 12:03



Tgt Ion: 164 Resp: 12579
 Ion Ratio Lower Upper
 164 100
 129 83.2 65.5 121.7
 131 76.4 59.7 110.9
 166 128.6 88.7 164.7

