

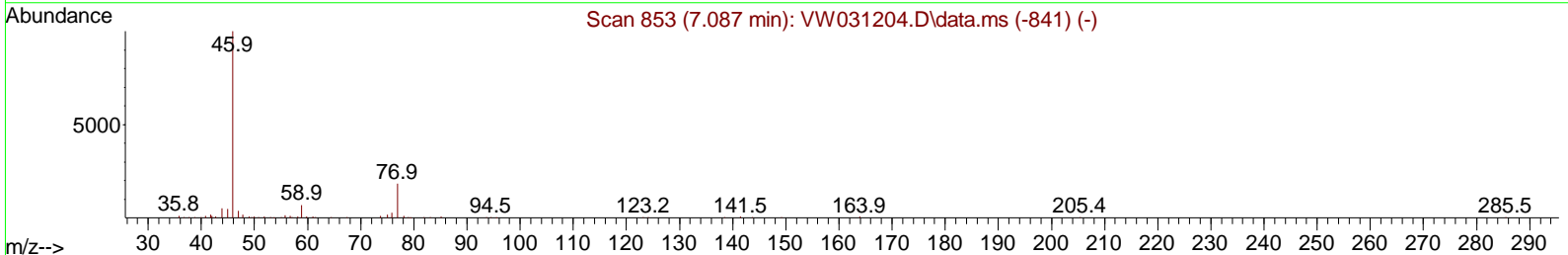
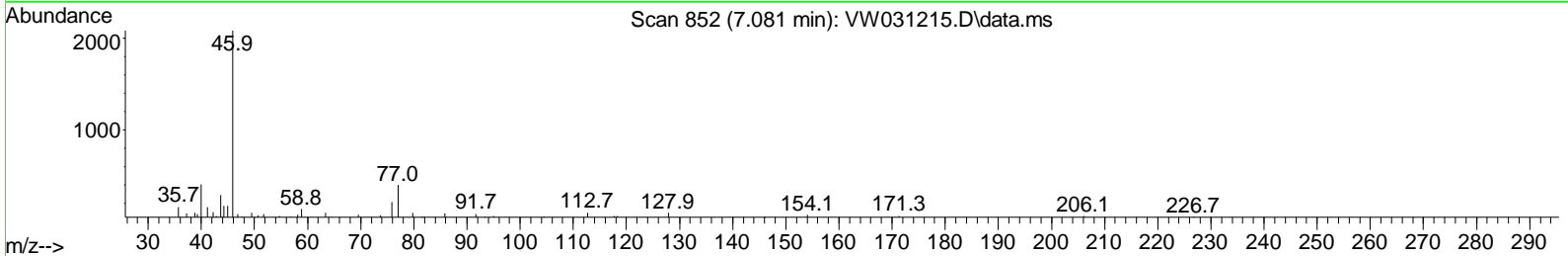
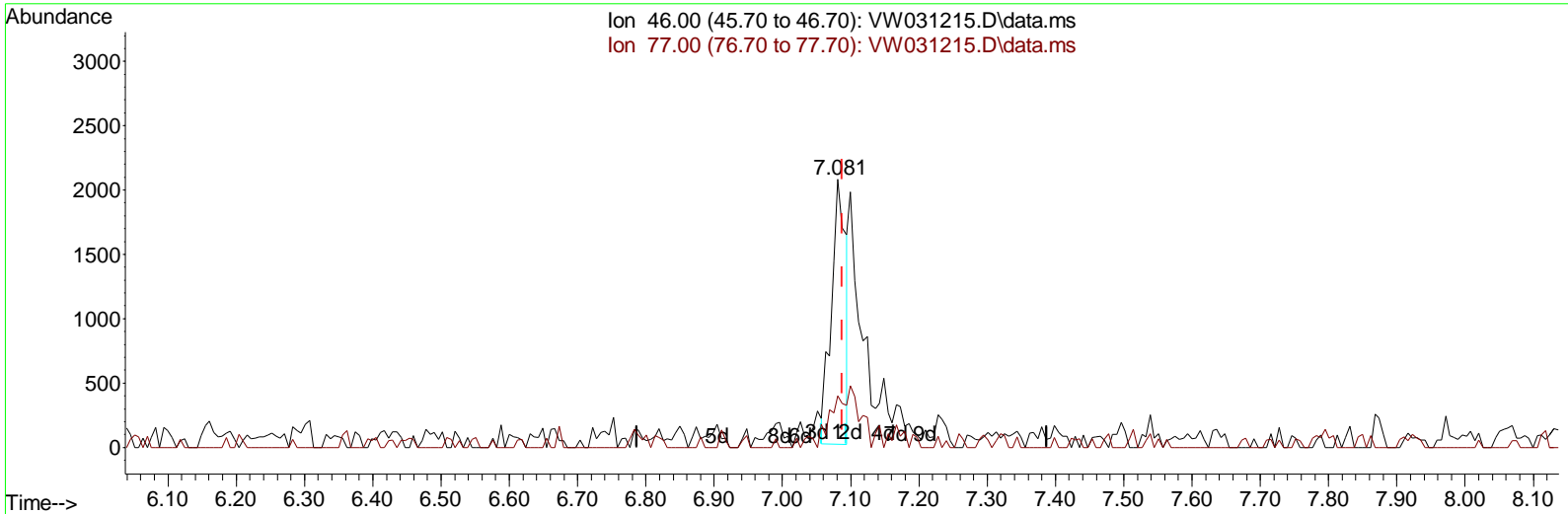
Data Path : Z:\voasrv\HPCHEM1\MSVOA_W\Data\VW121124\
 Data File : VW031215.D
 Acq On : 11 Dec 2024 15:40
 Operator : SY/MD
 Sample : P5155-09
 Mi sc : 4.43g/10mL/MSVOA_W/SOIL/A
 ALS Vial : 14 Sample Multiplier: 1

Instrument :
 MSVOA_W
 ClientSampleId :
 E28T4

Manual Integrations APPROVED

Reviewed By :Romaben Patel 12/12/2024
 Supervised By :Mahesh Dadoda 12/13/2024

Quant Time: Dec 12 03:04:40 2024
 Quant Method : Z:\voasrv\HPCHEM1\MSVOA_W\Method\SFAMLM120424SMA.M
 Quant Title : SFAM01.0
 QLast Update : Thu Dec 12 03:01:22 2024
 Response via : Initial Calibration



TIC: VW031215.D\data.ms

(21) 2-Butanone-d5 (S)

7.081min (-0.006) 17.26 ug/L

| response | 2995 | |
|----------|--------|--------|
| Ion | Exp% | Act% |
| 46.00 | 100.00 | 100.00 |
| 77.00 | 27.80 | 23.27 |
| 0.00 | 0.00 | 0.00 |
| 0.00 | 0.00 | 0.00 |

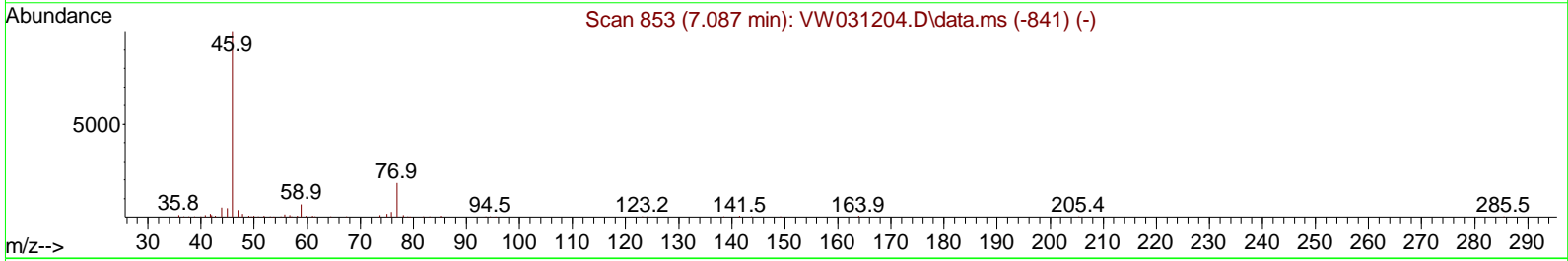
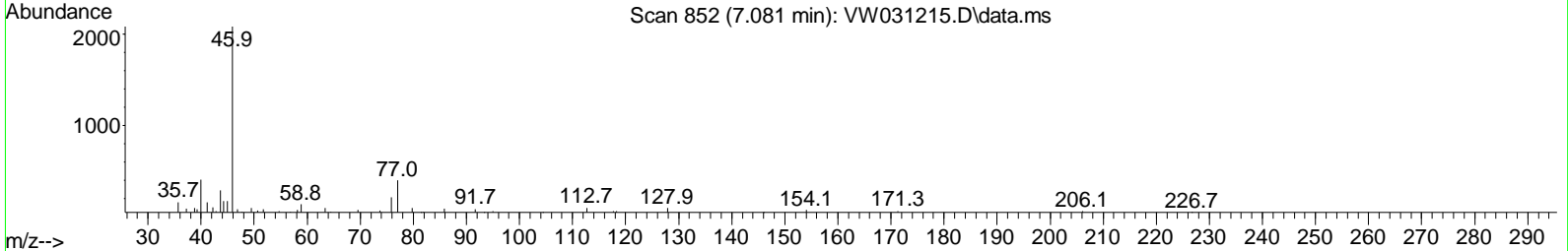
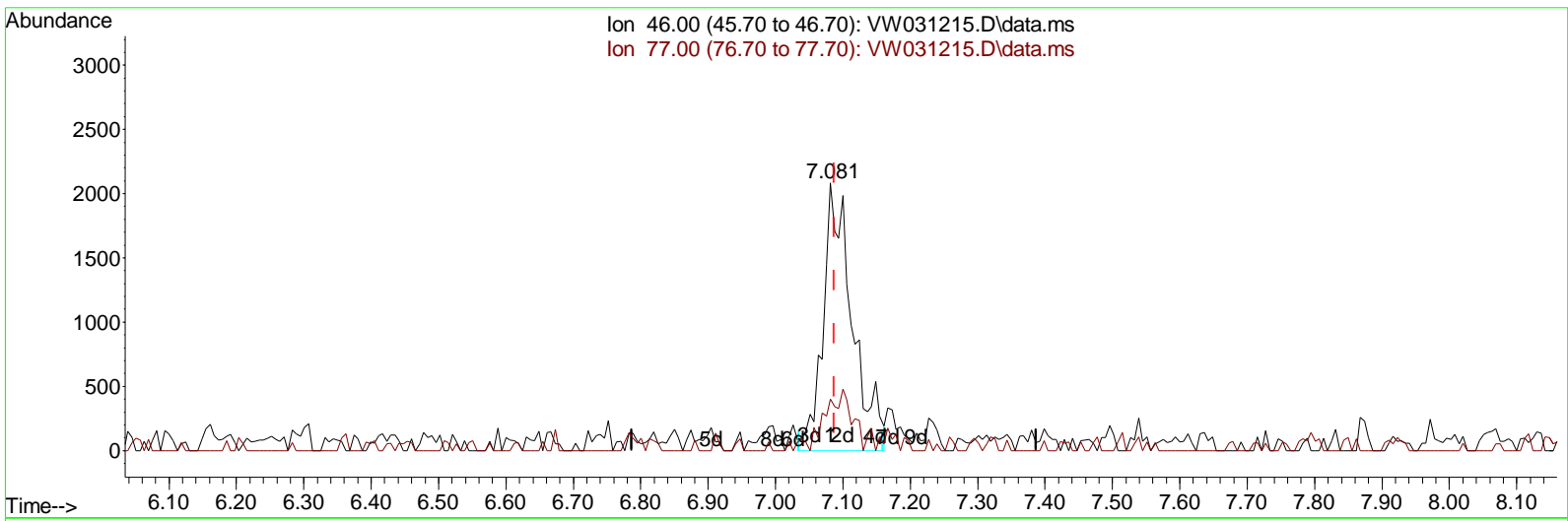
Data Path : Z:\voasrv\HPCHEM1\MSVOA_W\Data\VW121124\
 Data File : VW031215.D
 Acq On : 11 Dec 2024 15:40
 Operator : SY/MD
 Sample : P5155-09
 Mi sc : 4.43g/10mL/MSVOA_W/SOIL/A
 ALS Vial : 14 Sample Multiplier: 1

Instrument :
 MSVOA_W
ClientSampleId :
 E28T4

Manual IntegrationsAPPROVED

Reviewed By :Romaben Patel 12/12/2024
 Supervised By :Mahesh Dadoda 12/13/2024

Quant Time: Dec 12 03:04:40 2024
 Quant Method : Z:\voasrv\HPCHEM1\MSVOA_W\Method\SFAMMLM120424SMA.M
 Quant Title : SFAM01.0
 QLast Update : Thu Dec 12 03:01:22 2024
 Response via : Initial Calibration



TIC: VW031215.D\data.ms

(21) 2-Butanone-d5 (S)

7.081min (-0.006) 35.85 ug/L m

| response | 6222 |
|----------|---------------|
| Ion | Exp% Act% |
| 46.00 | 100.00 100.00 |
| 77.00 | 27.80 11.20# |
| 0.00 | 0.00 0.00 |
| 0.00 | 0.00 0.00 |

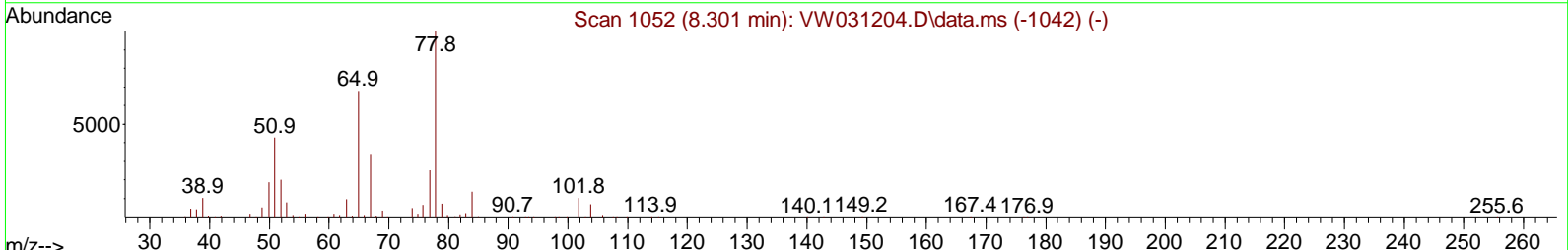
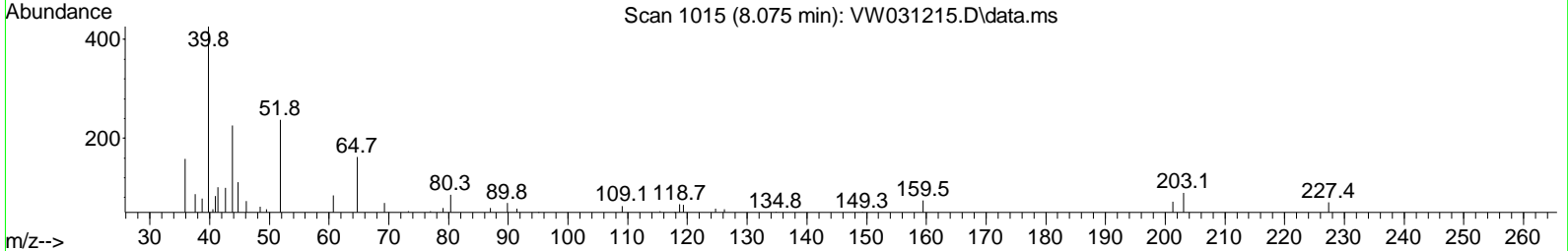
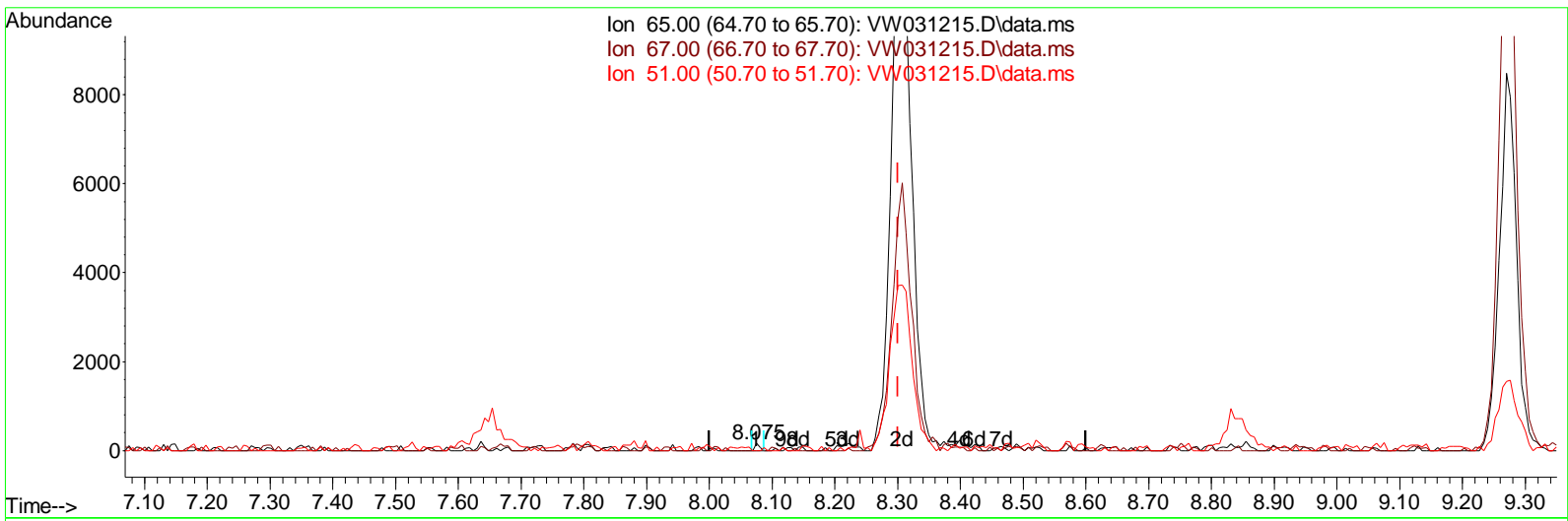
Data Path : Z:\voasrv\HPCHEM1\MSVOA_W\Data\VW121124\
 Data File : VW031215.D
 Acq On : 11 Dec 2024 15:40
 Operator : SY/MD
 Sample : P5155-09
 Mi sc : 4.43g/10mL/MSVOA_W/SOIL/A
 ALS Vial : 14 Sample Multiplier: 1

Instrument :
 MSVOA_W
ClientSampleId :
 E28T4

Manual IntegrationsAPPROVED

Reviewed By :Romaben Patel 12/12/2024
 Supervised By :Mahesh Dadoda 12/13/2024

Quant Time: Dec 12 03:04:40 2024
 Quant Method : Z:\voasrv\HPCHEM1\MSVOA_W\Method\SFAMMLM120424SMA.M
 Quant Title : SFAM01.0
 QLast Update : Thu Dec 12 03:01:22 2024
 Response via : Initial Calibration



TIC: VW031215.D\data.ms

(26) 1,2-Dichloroethane-d4 (S)

8.075min (-0.225) 0.09 ug/L

| response | 85 | |
|----------|--------|--------|
| Ion | Exp% | Act% |
| 65.00 | 100.00 | 100.00 |
| 67.00 | 52.30 | 56.47 |
| 51.00 | 104.20 | 94.12 |
| 0.00 | 0.00 | 0.00 |

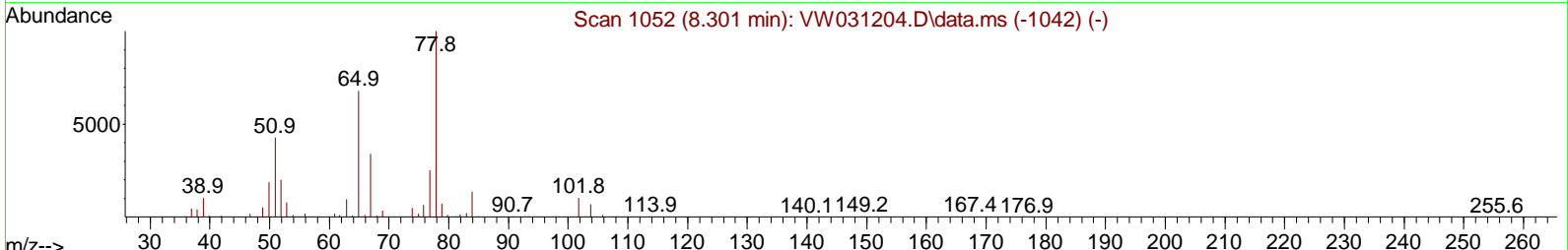
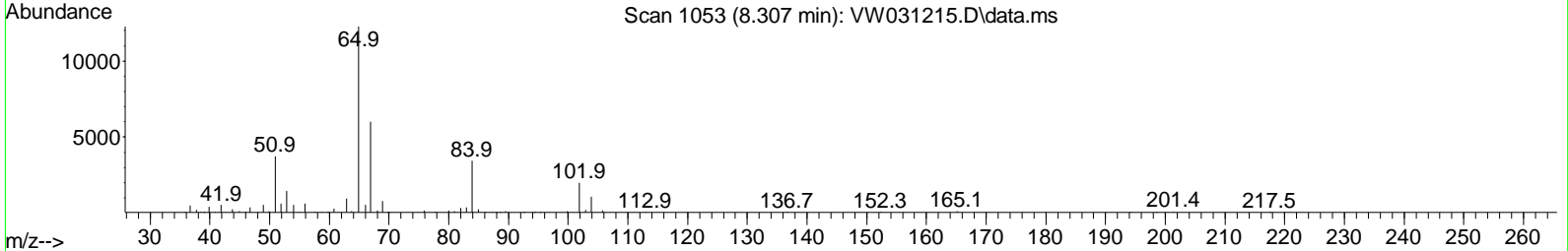
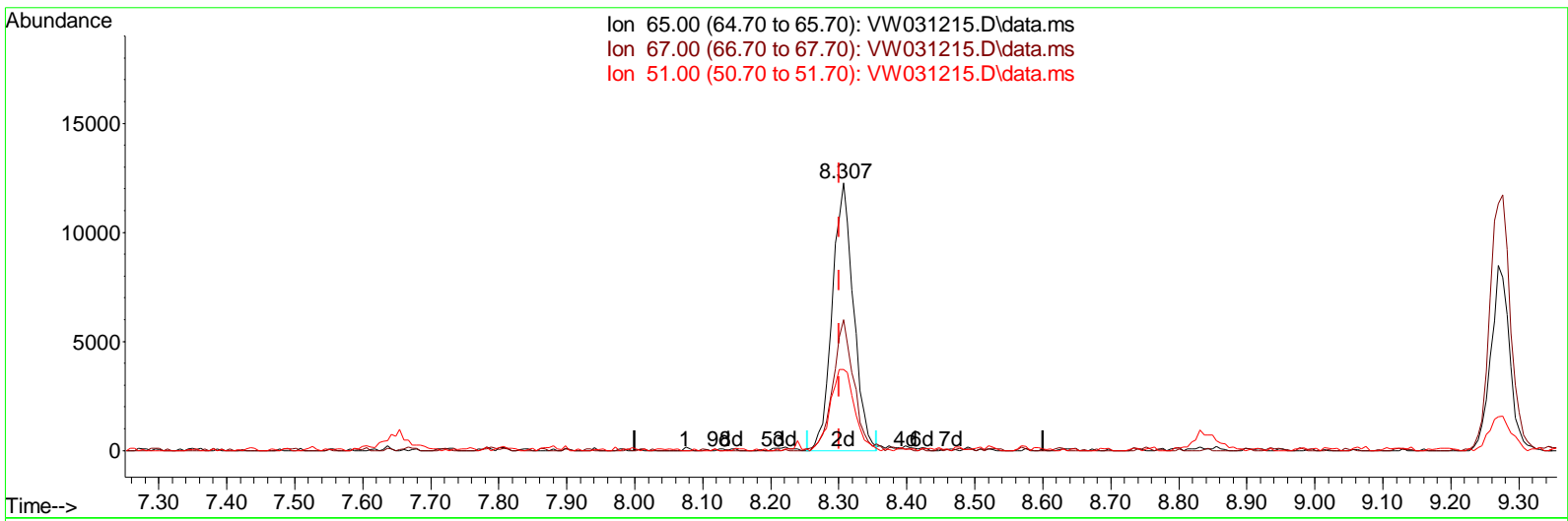
Data Path : Z:\voasrv\HPCHEM1\MSVOA_W\Data\VW121124\
 Data File : VW031215.D
 Acq On : 11 Dec 2024 15:40
 Operator : SY/MD
 Sample : P5155-09
 Misc : 4.43g/10mL/MSVOA_W/SOIL/A
 ALS Vial : 14 Sample Multiplier: 1

Instrument :
 MSVOA_W
ClientSampleId :
 E28T4

Manual Integrations APPROVED

Reviewed By : Romaben Patel 12/12/2024
 Supervised By : Mahesh Dadoda 12/13/2024

Quant Time: Dec 12 03:04:40 2024
 Quant Method : Z:\voasrv\HPCHEM1\MSVOA_W\Method\SFAMLM120424SMA.M
 Quant Title : SFAM01.0
 QLast Update : Thu Dec 12 03:01:22 2024
 Response via : Initial Calibration



TIC: VW031215.D\data.ms

(26) 1,2-Dichloroethane-d4 (S)

8.307min (+ 0.006) 28.44 ug/L m

response 26432

| Ion | Exp% | Act% |
|-------|--------|--------|
| 65.00 | 100.00 | 100.00 |
| 67.00 | 52.30 | 0.18# |
| 51.00 | 104.20 | 0.30# |
| 0.00 | 0.00 | 0.00 |

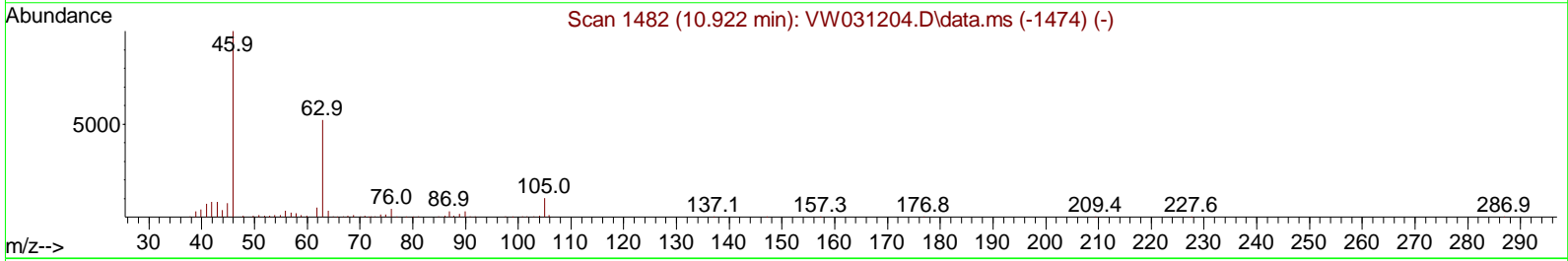
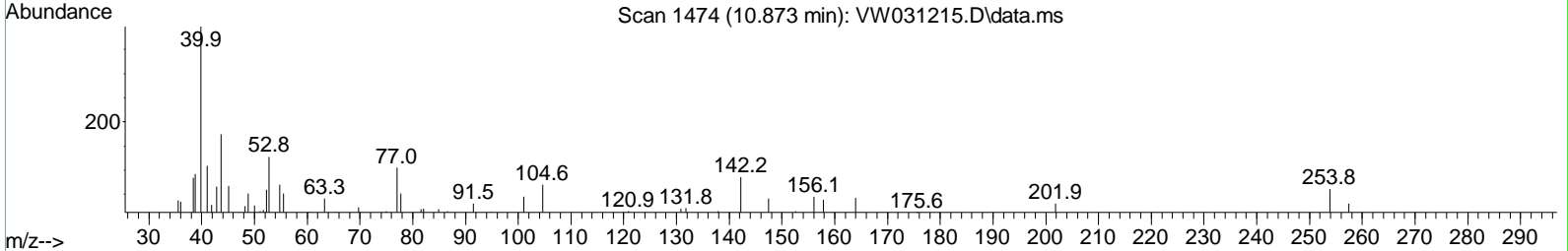
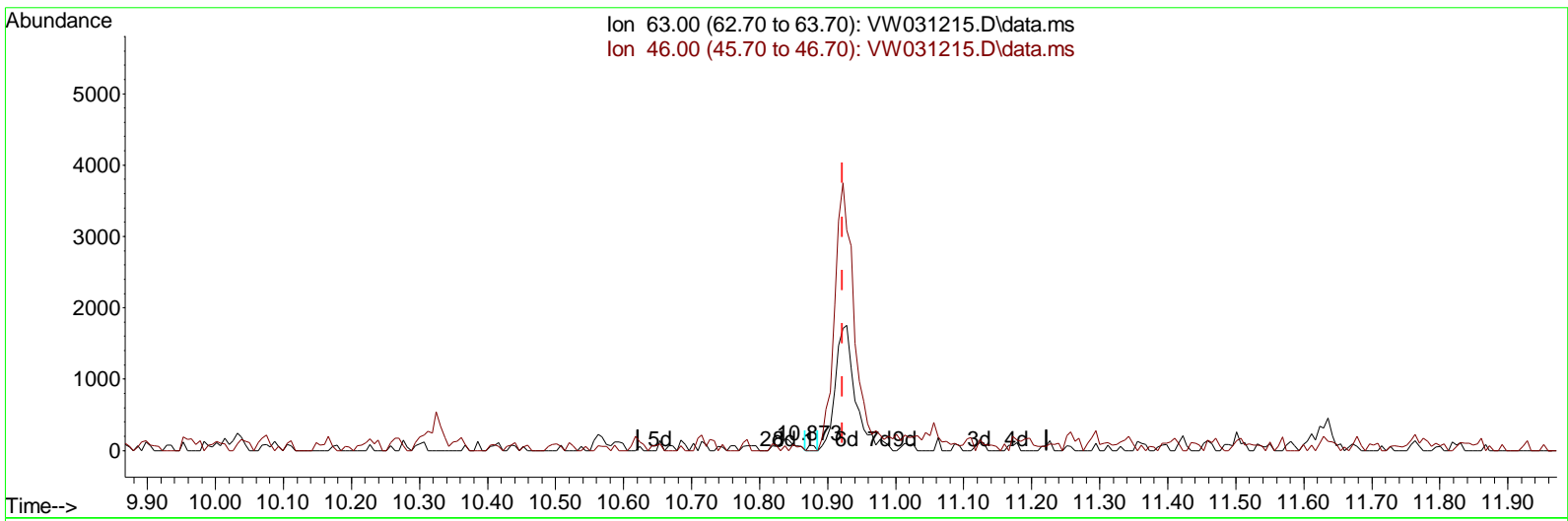
Data Path : Z:\voasrv\HPCHEM1\MSVOA_W\Data\VW121124\
 Data File : VW031215.D
 Acq On : 11 Dec 2024 15:40
 Operator : SY/MD
 Sample : P5155-09
 Mi sc : 4.43g/10mL/MSVOA_W/SOIL/A
 ALS Vial : 14 Sample Multiplier: 1

Instrument :
 MSVOA_W
ClientSampleId :
 E28T4

Manual IntegrationsAPPROVED

Reviewed By :Romaben Patel 12/12/2024
 Supervised By :Mahesh Dadoda 12/13/2024

Quant Time: Dec 12 03:04:40 2024
 Quant Method : Z:\voasrv\HPCHEM1\MSVOA_W\Method\SFAMLM120424SMA.M
 Quant Title : SFAM01.0
 QLast Update : Thu Dec 12 03:01:22 2024
 Response via : Initial Calibration



TIC: VW031215.D\data.ms

(47) 2-Hexanone-d5 (S)

10.873min (-0.049) 0.48 ug/L

| response | 51 | |
|----------|--------|--------|
| Ion | Exp% | Act% |
| 63.00 | 100.00 | 100.00 |
| 46.00 | 162.70 | 143.14 |
| 0.00 | 0.00 | 0.00 |
| 0.00 | 0.00 | 0.00 |

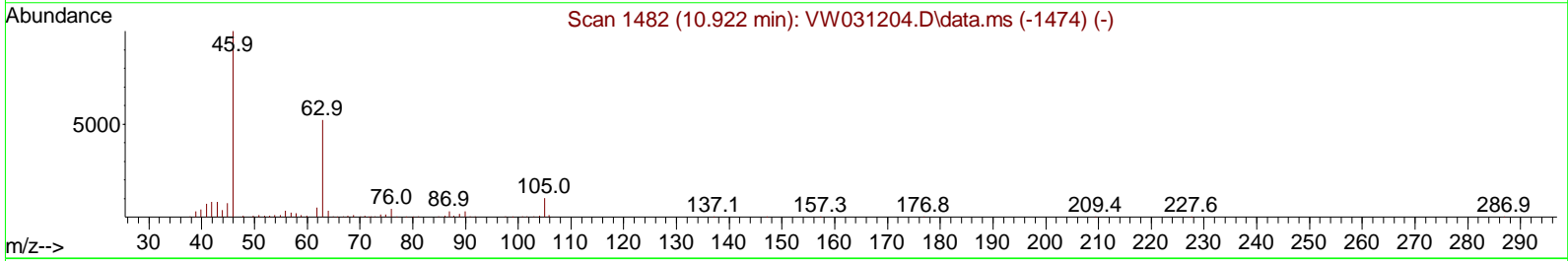
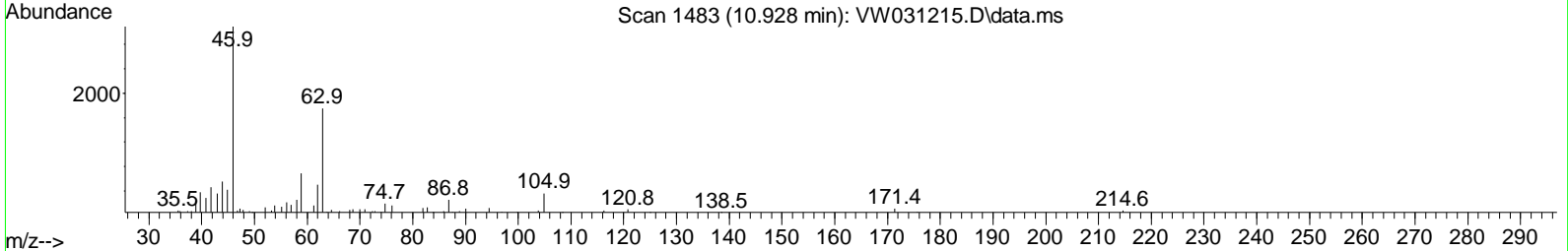
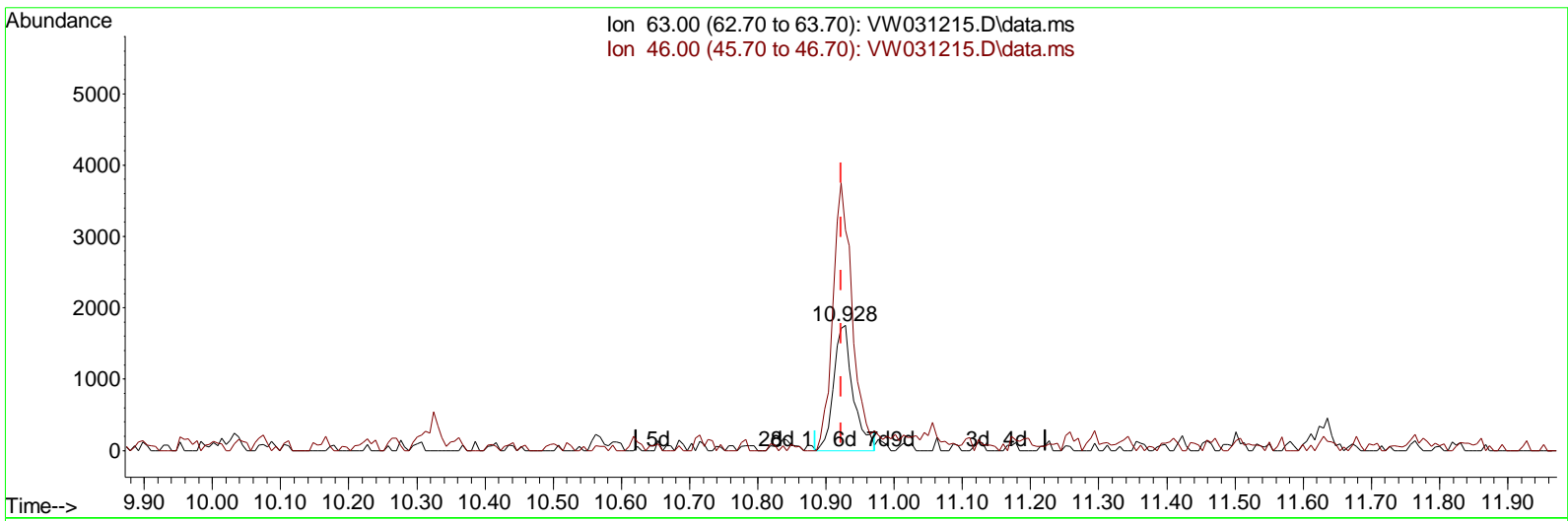
Data Path : Z:\voasrv\HPCHEM1\MSVOA_W\Data\VW121124\
 Data File : VW031215.D
 Acq On : 11 Dec 2024 15:40
 Operator : SY/MD
 Sample : P5155-09
 Mi sc : 4.43g/10mL/MSVOA_W/SOIL/A
 ALS Vial : 14 Sample Multiplier: 1

Instrument :
 MSVOA_W
ClientSampleId :
 E28T4

Manual Integrations APPROVED

Reviewed By :Romaben Patel 12/12/2024
 Supervised By :Mahesh Dadoda 12/13/2024

Quant Time: Dec 12 03:04:40 2024
 Quant Method : Z:\voasrv\HPCHEM1\MSVOA_W\Method\SFAMMLM120424SMA.M
 Quant Title : SFAM01.0
 QLast Update : Thu Dec 12 03:01:22 2024
 Response via : Initial Calibration



TIC: VW031215.D\data.ms

(47) 2-Hexanone-d5 (S)

10.928min (+ 0.006) 32.62 ug/L m

response 3498

| Ion | Exp% | Act% |
|-------|--------|--------|
| 63.00 | 100.00 | 100.00 |
| 46.00 | 162.70 | 2.09# |
| 0.00 | 0.00 | 0.00 |
| 0.00 | 0.00 | 0.00 |

Data Path : Z:\voasrv\HPCHEM1\MSVOA_W\Data\VW121124\
 Data File : VW031215.D
 Acq On : 11 Dec 2024 15:40
 Operator : SY/MD
 Sample : P5155-09
 Mi sc : 4.43g/10mL/MSVOA_W/SOIL/A
 ALS Vial : 14 Sample Multi plier: 1

Instrument :
 MSVOA_W
ClientSampleId :
 E28T4

Manual IntegrationsAPPROVED

Reviewed By :Romaben Patel 12/12/2024
 Supervised By :Mahesh Dadoda 12/13/2024

Quant Time: Dec 12 03:04:40 2024
 Quant Method : Z:\voasrv\HPCHEM1\MSVOA_W\Method\SFAMWLM120424SMA.M
 Quant Title : SFAM01.0
 QLast Update : Thu Dec 12 03:01:22 2024
 Response via : Initial Calibration

| Compound | R.T. | QI on | Response | Conc | Units | Dev(Min) |
|------------------------------------|----------|-------|------------|-----------|-------|----------|
| Internal Standards | | | | | | |
| 1) 1,4-Di fluorobenzene | 8.843 | 114 | 64490 | 25.000 | ug/L | # 0.00 |
| 28) Chlorobenzene-d5 | 11.629 | 117 | 50833 | 25.000 | ug/L | 0.00 |
| 58) 1,4-Di chlorobenzene-d4 | 13.550 | 152 | 11458 | 25.000 | ug/L | 0.00 |
| System Monitoring Compounds | | | | | | |
| 4) Vinyl Chloride-d3 | 2.357 | 65 | 18909 | 19.053 | ug/L | 0.00 |
| Spi ked Amount 25.000 | Range 30 | - 150 | Recovery = | 76.200% | | |
| 7) Chloroethane-d5 | 2.893 | 69 | 17340 | 22.520 | ug/L | 0.00 |
| Spi ked Amount 25.000 | Range 30 | - 150 | Recovery = | 90.080% | | |
| 11) 1,1-Di chloroethene-d2 | 4.027 | 65 | 7550 | 16.674 | ug/L | 0.00 |
| Spi ked Amount 25.000 | Range 45 | - 110 | Recovery = | 66.680% | | |
| 21) 2-Butanone-d5 | 7.081 | 46 | 6222m | 35.848 | ug/L | 0.00 |
| Spi ked Amount 50.000 | Range 20 | - 135 | Recovery = | 71.700% | | |
| 24) Chloroform-d | 7.648 | 84 | 43526 | 23.044 | ug/L | 0.00 |
| Spi ked Amount 25.000 | Range 40 | - 150 | Recovery = | 92.160% | | |
| 26) 1,2-Di chloroethane-d4 | 8.307 | 65 | 26432m | 28.439 | ug/L | 0.00 |
| Spi ked Amount 25.000 | Range 70 | - 130 | Recovery = | 113.760% | | |
| 32) Benzene-d6 | 8.270 | 84 | 58166 | 18.617 | ug/L | 0.00 |
| Spi ked Amount 25.000 | Range 20 | - 135 | Recovery = | 74.480% | | |
| 36) 1,2-Di chloropropane-d6 | 9.276 | 67 | 24661 | 26.947 | ug/L | 0.00 |
| Spi ked Amount 25.000 | Range 70 | - 120 | Recovery = | 107.800% | | |
| 41) Toluene-d8 | 10.325 | 98 | 40692 | 14.432 | ug/L | 0.00 |
| Spi ked Amount 25.000 | Range 30 | - 130 | Recovery = | 57.720% | | |
| 43) trans-1,3-Di chloroprop... | 10.581 | 79 | 5721 | 15.527 | ug/L | 0.00 |
| Spi ked Amount 25.000 | Range 30 | - 135 | Recovery = | 62.120% | | |
| 47) 2-Hexanone-d5 | 10.928 | 63 | 3498m | 32.624 | ug/L | 0.00 |
| Spi ked Amount 50.000 | Range 20 | - 135 | Recovery = | 65.240% | | |
| 56) 1,1,2,2-Tetrachloroeth... | 12.684 | 84 | 18543 | 30.022 | ug/L | 0.00 |
| Spi ked Amount 25.000 | Range 45 | - 120 | Recovery = | 120.080%# | | |
| 66) 1,2-Di chlorobenzene-d4 | 13.855 | 152 | 8618 | 21.176 | ug/L | 0.00 |
| Spi ked Amount 25.000 | Range 75 | - 120 | Recovery = | 84.720% | | |

Target Compounds Qvalue

(#) = qual ifier out of range (m) = manual i ntegrati on (+) = si gnal s summed

Data Path : Z:\voasrv\HPCHEM1\MSVOA_W\Data\VW121124\
 Data File : VW031215.D
 Acq On : 11 Dec 2024 15:40
 Operator : SY/MD
 Sample : P5155-09
 Misc : 4.43g/10mL/MSVOA_W/SOIL/A
 ALS Vial : 14 Sample Multiplier: 1

Instrument :
 MSVOA_W
ClientSampleId :
 E28T4

Manual Integrations APPROVED

Reviewed By : Romaben Patel 12/12/2024
 Supervised By : Mahesh Dadoda 12/13/2024

Quant Time: Dec 12 03:04:40 2024
 Quant Method : Z:\voasrv\HPCHEM1\MSVOA_W\Method\SFAMWLM120424SMA.M
 Quant Title : SFAM01.0
 QLast Update : Thu Dec 12 03:01:22 2024
 Response via : Initial Calibration

