

Data Path : Z:\voasrv\HPCHEM1\MSVOA\_W\Data\VW121221\  
 Data File : VW021348.D  
 Acq On : 12 Dec 2021 03:58  
 Operator : SY/VA  
 Sample : VIBLK  
 Misc : 5.00g/10.0mL/MSVOA\_W/SOIL  
 ALS Vial : 1 Sample Multiplier: 1

Instrument :  
 MSVOA\_W  
 ClientSampleId :  
 VIBLK529

Integration Parameters: LSCINT.P

Integrator: RTE  
 Smoothing : OFF  
 Sampling : 1  
 Start Thrs : 0.2  
 Stop Thrs : 0

Filtering: 5  
 Min Area: 0 % of largest Peak  
 Max Peaks: 100  
 Peak Location: TOP

If leading or trailing edge < 100 prefer < Baseline drop else tangent >  
 Peak separation: 5

Method : Z:\voasrv\HPCHEM1\MSVOA\_W\Method\SFAMWLM120921SMA.M  
 Title : SFAM01.0

Signal : TIC: VW021348.D\data.ms

peak #	R.T. min	first scan	max scan	last scan	PK TY	peak height	corr. area	corr. % max.	% of total
1	2.349	68	73	81	rBV	46885	72897	19.95%	2.621%
2	2.879	154	160	171	rVB	25069	53052	14.52%	1.908%
3	3.659	286	288	291	rVB2	210	253	0.07%	0.009%
4	3.702	291	295	297	rBV2	136	212	0.06%	0.008%
5	3.733	297	300	302	rBV2	207	293	0.08%	0.011%
6	3.781	305	308	309	rBV2	203	203	0.06%	0.007%
7	4.013	336	346	361	rBV	42366	124506	34.07%	4.477%
8	4.135	365	366	369	rVB2	276	211	0.06%	0.008%
9	4.385	402	407	415	rBV3	674	1653	0.45%	0.059%
10	4.598	436	442	443	rVB2	219	331	0.09%	0.012%
11	4.732	461	464	468	rVV	231	342	0.09%	0.012%
12	4.830	476	480	481	rBV2	203	247	0.07%	0.009%
13	4.915	484	494	507	rVB2	7385	23758	6.50%	0.854%
14	5.623	609	610	612	rBV2	269	233	0.06%	0.008%
15	5.732	625	628	630	rBV	240	258	0.07%	0.009%
16	5.848	644	647	649	rVV2	185	243	0.07%	0.009%
17	5.946	659	663	667	rVV3	657	1109	0.30%	0.040%
18	6.037	676	678	683	rVB2	194	296	0.08%	0.011%
19	6.086	683	686	688	rBV	188	252	0.07%	0.009%
20	6.470	746	749	752	rVV2	160	203	0.06%	0.007%
21	6.598	767	770	773	rBV2	178	253	0.07%	0.009%
22	6.824	805	807	810	rBV2	168	194	0.05%	0.007%
23	6.945	826	827	830	rVB	267	214	0.06%	0.008%
24	6.976	830	832	834	rBV	190	226	0.06%	0.008%
25	7.074	840	848	855	rBV2	9092	25368	6.94%	0.912%
26	7.287	881	883	886	rBV	159	214	0.06%	0.008%
27	7.427	904	906	909	rBV2	249	272	0.07%	0.010%
28	7.458	909	911	914	rVV2	146	188	0.05%	0.007%
29	7.494	915	917	921	rVB	283	315	0.09%	0.011%
30	7.537	921	924	926	rBV	252	310	0.08%	0.011%
31	7.647	931	942	955	rBV	65484	156384	42.79%	5.624%
32	7.884	978	981	983	rVV2	191	284	0.08%	0.010%
33	7.921	986	987	992	rVV2	267	322	0.09%	0.012%
34	7.958	992	993	1001	rVB	259	405	0.11%	0.015%
35	8.031	1003	1005	1007	rVB	265	188	0.05%	0.007%
36	8.067	1010	1011	1014	rVB	219	214	0.06%	0.008%

Data Path : Z:\voasrv\HPCHEM1\MSVOA\_W\Data\VW121221\  
 Data File : VW021348.D  
 Acq On : 12 Dec 2021 03:58  
 Operator : SY/VA  
 Sample : VIBLK  
 Misc : 5.00g/10.0mL/MSVOA\_W/SOIL  
 ALS Vial : 1 Sample Multiplier: 1

Instrument :  
 MSVOA\_W  
 ClientSampleId :  
 VIBLK529

Integration Parameters: LSCINT.P

Integrator: RTE  
 Smoothing : OFF  
 Sampling : 1  
 Start Thrs : 0.2  
 Stop Thrs : 0

Filtering: 5  
 Min Area: 0 % of largest Peak  
 Max Peaks: 100  
 Peak Location: TOP

If leading or trailing edge < 100 prefer < Baseline drop else tangent >  
 Peak separation: 5

Method : Z:\voasrv\HPCHEM1\MSVOA\_W\Method\SFAMWLM120921SMA.M  
 Title : SFAM01.0

37	8.092	1014	1015	1019	rBV2	172	205	0.06%	0.007%
38	8.275	1034	1045	1060	rBV2	123257	365435	100.00%	13.141%
39	8.841	1130	1138	1149	rVV	101274	200315	54.82%	7.203%
40	9.085	1173	1178	1187	rVB6	1326	3070	0.84%	0.110%
41	9.274	1201	1209	1218	rVB	81264	161611	44.22%	5.812%
42	9.354	1218	1222	1225	rVB2	246	335	0.09%	0.012%
43	9.524	1248	1250	1251	rBV	200	195	0.05%	0.007%
44	9.604	1261	1263	1267	rBV	149	267	0.07%	0.010%
45	9.750	1283	1287	1290	rBV2	224	330	0.09%	0.012%
46	9.799	1292	1295	1297	rVV	184	207	0.06%	0.007%
47	9.866	1302	1306	1310	rBV2	189	401	0.11%	0.014%
48	9.939	1316	1318	1322	rBV	177	244	0.07%	0.009%
49	10.036	1327	1334	1342	rVV	45861	82726	22.64%	2.975%
50	10.116	1345	1347	1350	rVB	278	284	0.08%	0.010%
51	10.146	1350	1352	1355	rBV	246	361	0.10%	0.013%
52	10.213	1359	1363	1368	rVB4	344	488	0.13%	0.018%
53	10.250	1368	1369	1373	rVB	221	187	0.05%	0.007%
54	10.323	1373	1381	1388	rBV	185450	323597	88.55%	11.637%
55	10.390	1388	1392	1397	rVV	2315	3755	1.03%	0.135%
56	10.579	1416	1423	1430	rBV	29741	49693	13.60%	1.787%
57	10.701	1437	1443	1450	rVB2	9490	17069	4.67%	0.614%
58	10.859	1463	1469	1474	rBV	10964	19257	5.27%	0.692%
59	10.926	1474	1480	1489	rVV	37783	63088	17.26%	2.269%
60	11.061	1496	1502	1509	rBV2	4948	7986	2.19%	0.287%
61	11.432	1558	1563	1569	rBV	8433	14012	3.83%	0.504%
62	11.542	1580	1581	1584	rBV	164	199	0.05%	0.007%
63	11.628	1588	1595	1605	rVB	145580	252065	68.98%	9.064%
64	11.707	1605	1608	1609	rBV	217	258	0.07%	0.009%
65	11.835	1623	1629	1633	rBV4	343	719	0.20%	0.026%
66	12.109	1672	1674	1677	rVB2	248	227	0.06%	0.008%
67	12.170	1677	1684	1687	rBV2	240	490	0.13%	0.018%
68	12.249	1695	1697	1701	rVB	291	284	0.08%	0.010%
69	12.310	1705	1707	1710	rVB	178	199	0.05%	0.007%
70	12.353	1713	1714	1717	rBV	164	192	0.05%	0.007%
71	12.463	1729	1732	1734	rBV	248	262	0.07%	0.009%
72	12.603	1748	1755	1762	rVB3	25539	45997	12.59%	1.654%
73	12.694	1763	1770	1776	rBV	67743	114596	31.36%	4.121%
74	12.755	1776	1780	1789	rVB4	851	1585	0.43%	0.057%
75	12.859	1795	1797	1803	rBV2	181	305	0.08%	0.011%
76	12.932	1803	1809	1812	rBV2	1695	2487	0.68%	0.089%

Data Path : Z:\voasrv\HPCHEM1\MSVOA\_W\Data\VW121221\  
 Data File : VW021348.D  
 Acq On : 12 Dec 2021 03:58  
 Operator : SY/VA  
 Sample : VIBLK  
 Misc : 5.00g/10.0mL/MSVOA\_W/SOIL  
 ALS Vial : 1 Sample Multiplier: 1

Instrument :  
 MSVOA\_W  
 ClientSampleId :  
 VIBLK529

Integration Parameters: LSCINT.P

Integrator: RTE  
 Smoothing : OFF  
 Sampling : 1  
 Start Thrs : 0.2  
 Stop Thrs : 0

Filtering: 5  
 Min Area: 0 % of largest Peak  
 Max Peaks: 100  
 Peak Location: TOP

If leading or trailing edge < 100 prefer < Baseline drop else tangent >  
 Peak separation: 5

Method : Z:\voasrv\HPCHEM1\MSVOA\_W\Method\SFAMWLM120921SMA.M  
 Title : SFAM01.0

77	13.011	1819	1822	1825	rVB2	277	274	0.07%	0.010%
78	13.085	1832	1834	1835	rBV	237	213	0.06%	0.008%
79	13.103	1835	1837	1841	rVB	176	195	0.05%	0.007%
80	13.188	1844	1851	1856	rBV3	1412	2672	0.73%	0.096%
81	13.249	1859	1861	1863	rVV	475	571	0.16%	0.021%
82	13.292	1863	1868	1873	rVB4	3338	5141	1.41%	0.185%
83	13.408	1882	1887	1891	rVB3	1104	1542	0.42%	0.055%
84	13.469	1895	1897	1899	rVB	336	235	0.06%	0.008%
85	13.505	1900	1903	1905	rBV2	272	369	0.10%	0.013%
86	13.554	1905	1911	1918	rBV	163845	264088	72.27%	9.497%
87	13.761	1940	1945	1952	rVB4	1319	2393	0.65%	0.086%
88	13.853	1952	1960	1967	rBV	168008	284673	77.90%	10.237%
89	14.066	1989	1995	2000	rBV2	6241	10107	2.77%	0.363%
90	14.298	2030	2033	2034	rBV	173	198	0.05%	0.007%
91	14.718	2099	2102	2108	rVB2	665	896	0.25%	0.032%
92	14.871	2122	2127	2130	rBV2	277	464	0.13%	0.017%
93	15.042	2151	2155	2156	rBV2	267	238	0.07%	0.009%
94	15.157	2171	2174	2176	rBV2	221	274	0.07%	0.010%
95	15.432	2214	2219	2223	rBV3	1218	1922	0.53%	0.069%
96	15.481	2223	2227	2236	rVB3	934	1990	0.54%	0.072%
97	15.877	2289	2292	2296	rBV2	199	328	0.09%	0.012%
98	15.950	2301	2304	2306	rBV2	233	226	0.06%	0.008%
99	16.438	2381	2384	2386	rBV	265	432	0.12%	0.016%
100	16.535	2396	2400	2403	rBV	397	483	0.13%	0.017%

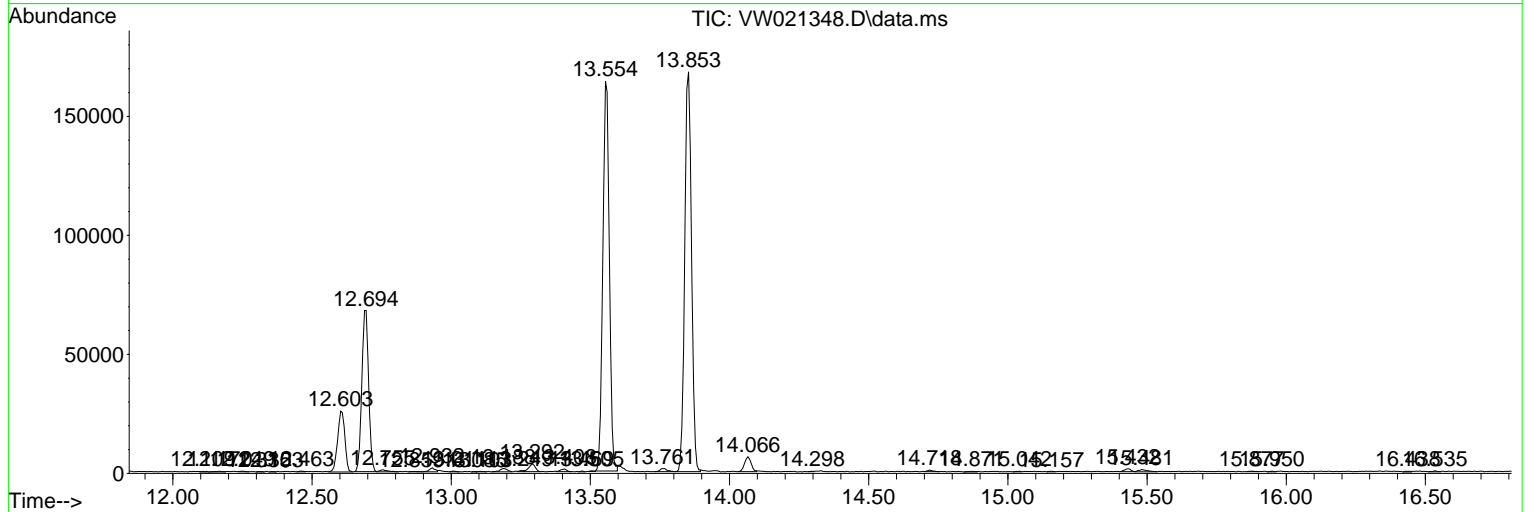
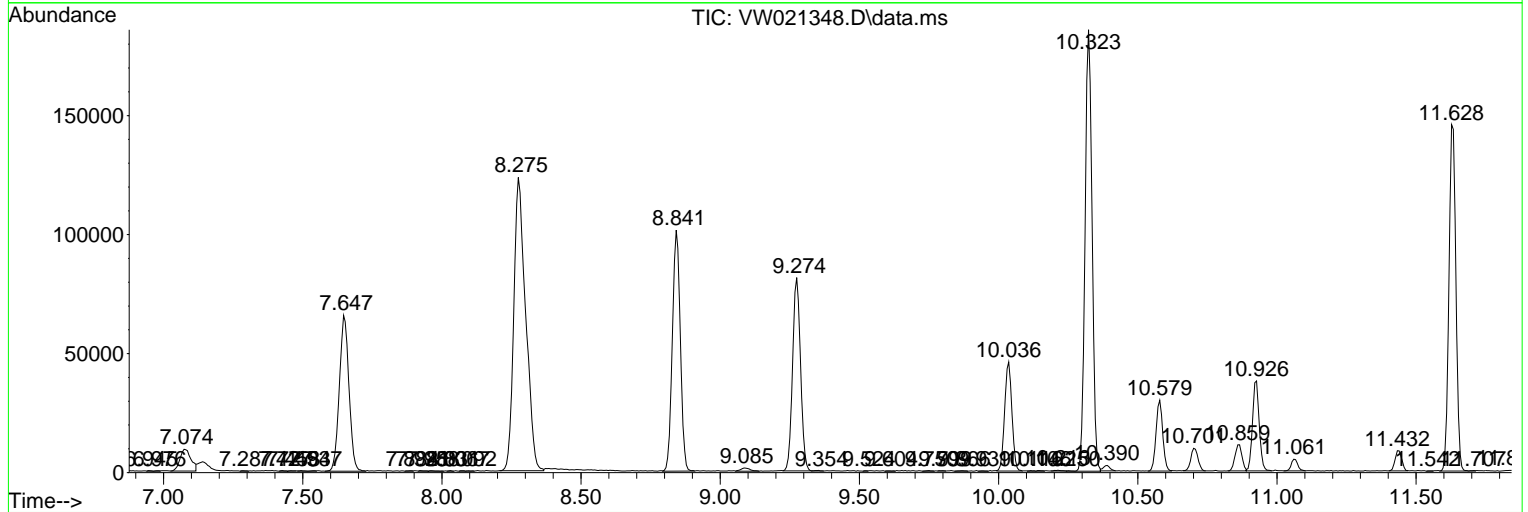
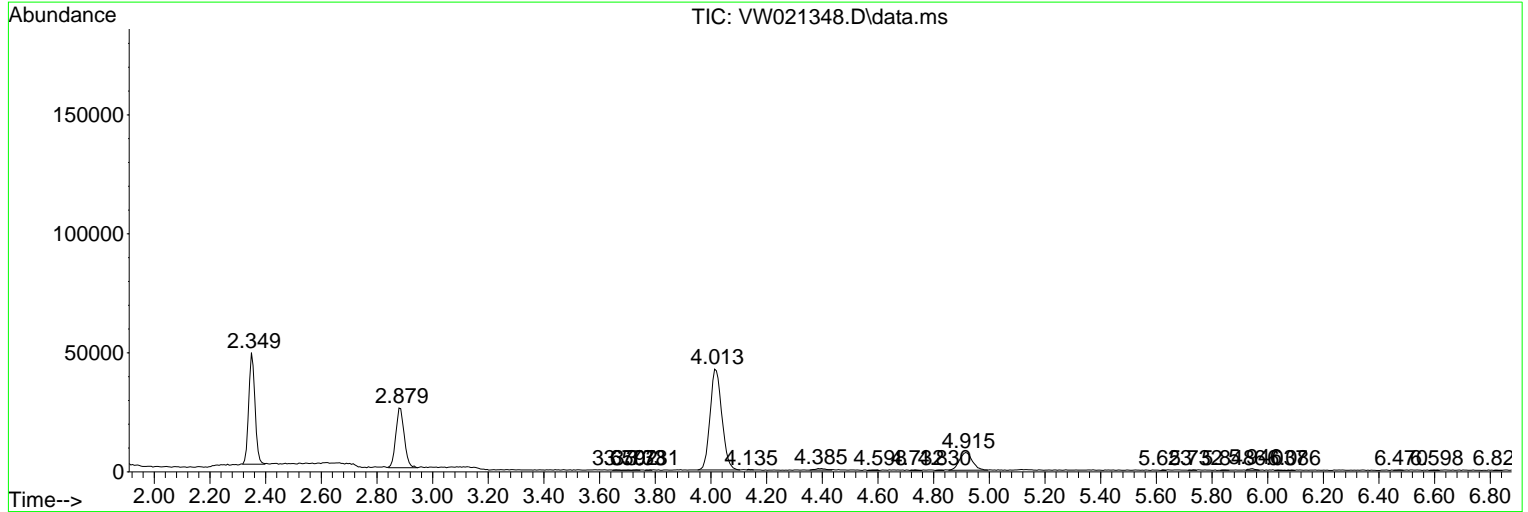
Sum of corrected areas: 2780810

Data Path : Z:\voasrv\HPCHEM1\MSVOA\_W\Data\VW121221\  
 Data File : VW021348.D  
 Acq On : 12 Dec 2021 03:58  
 Operator : SY/VA  
 Sample : VIBLK  
 Misc : 5.00g/10.0mL/MSVOA\_W/SOIL  
 ALS Vial : 1 Sample Multiplier: 1

Instrument :  
 MSVOA\_W  
 ClientSampleId :  
 VIBLK529

Quant Method : Z:\voasrv\HPCHEM1\MSVOA\_W\Method\SFAMWLM120921SMA.M  
 Quant Title : SFAM01.0

TIC Library : C:\Database\NIST20.L  
 TIC Integration Parameters: LSCINT.P



Data Path : Z:\voasrv\HPCHEM1\MSVOA\_W\Data\VW121221\  
Data File : VW021348.D  
Acq On : 12 Dec 2021 03:58  
Operator : SY/VA  
Sample : VIBLK  
Misc : 5.00g/10.0mL/MSVOA\_W/SOIL  
ALS Vial : 1 Sample Multiplier: 1

Instrument :  
MSVOA\_W  
ClientSampleId :  
VIBLK529

Quant Method : Z:\voasrv\HPCHEM1\MSVOA\_W\Method\SFAMWLM120921SMA.M  
Quant Title : SFAM01.0

TIC Library : C:\Database\NIST0.L  
TIC Integration Parameters: LSCINT.P

No Library Search Compounds Detected

\*\*\*\*\*

Data Path : Z:\voasrv\HPCHEM1\MSVOA\_W\Data\VW121221\  
Data File : VW021348.D  
Acq On : 12 Dec 2021 03:58  
Operator : SY/VA  
Sample : VIBLK  
Misc : 5.00g/10.0mL/MSVOA\_W/SOIL  
ALS Vial : 1 Sample Multiplier: 1

Instrument :  
MSVOA\_W  
ClientSampleId :  
VIBLK529

Quant Method : Z:\voasrv\HPCHEM1\MSVOA\_W\Method\SFAMWLM120921SMA.M  
Quant Title : SFAM01.0

TIC Library : C:\Database\NIST0.L  
TIC Integration Parameters: LSCINT.P

TIC Top Hit name	RT	EstConc	Units	Response	--Internal Standard--			
					#	RT	Resp	Conc

---