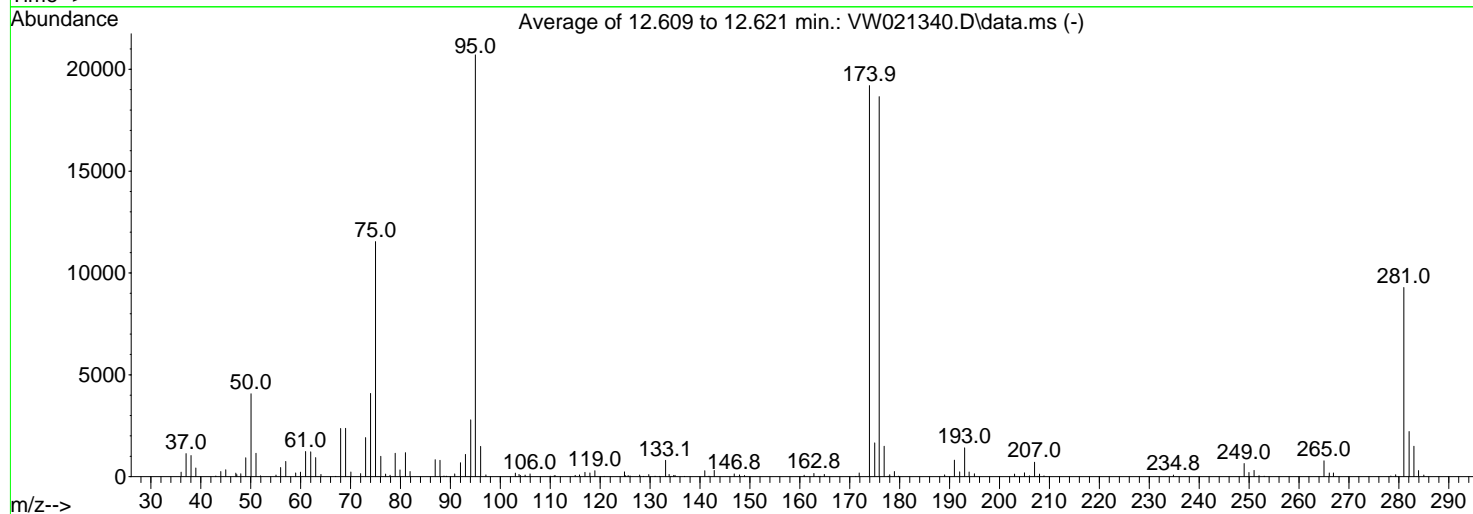
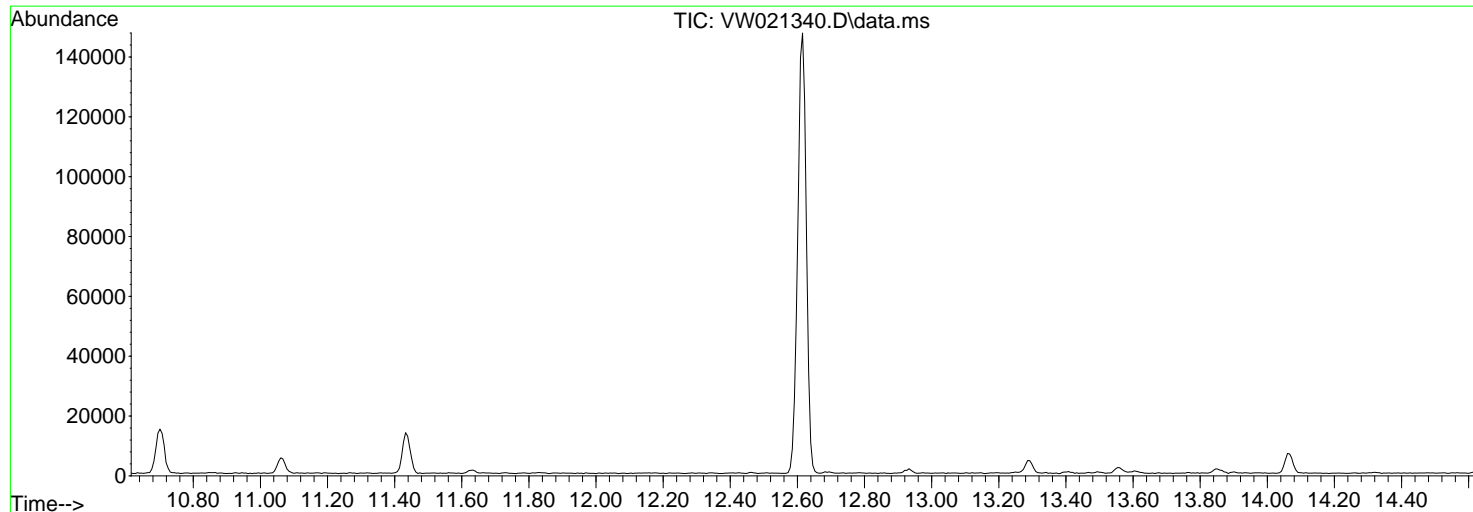


Data Path : Z:\voasrv\HPCHEM1\MSVOA_W\Data\VW121221\
 Data File : VW021340.D
 Acq On : 11 Dec 2021 22:01
 Operator : SY/VA
 Sample : BFB478
 Misc : 5.00g/10.0mL/MSVOA_W/SOIL
 ALS Vial : 1 Sample Multiplier: 1

Instrument :
 MSVOA_W
 ClientSampleId :
 BFB478

Integration File: LSCINT.P

Method : Z:\voasrv\HPCHEM1\MSVOA_W\Method\SFAMWLM120921SMA.M
 Title : SFAM01.0
 Last Update : Sat Dec 18 00:55:20 2021



AutoFind: Scans 1756, 1757, 1758; Background Corrected with Scan 1749

Target Mass	Rel. to Mass	Lower Limit%	Upper Limit%	Rel. Abn%	Raw Abn	Result Pass/Fail
50	95	15	40	19.7	4071	PASS
75	95	30	80	55.7	11537	PASS
95	95	100	100	100.0	20709	PASS
96	95	5	9	7.2	1482	PASS
173	174	0.00	2	0.0	0	PASS
174	95	50	120	92.7	19198	PASS
175	174	5	9	8.6	1654	PASS
176	174	95	105	97.2	18659	PASS
177	176	5	10	8.0	1494	PASS

m/z	Abundance
40.00	883.0

Instrument :
MSVOA_W
ClientSampleId :
BFB478

m/z	Abundance
36.00	220.0
37.00	1116.0
38.00	1068.0
39.00	422.0
40.00	779.0
43.00	86.0
44.00	285.0
45.00	447.0
47.00	248.0
48.00	136.0
49.00	909.0
50.00	3943.0
51.00	1170.0
52.00	70.0
55.10	88.0
56.00	451.0
57.00	757.0
59.00	279.0
60.00	223.0
61.00	1174.0
62.00	1225.0
63.00	894.0
64.00	90.0
67.00	56.0
68.00	2164.0
69.00	2278.0
70.10	242.0
72.00	177.0
73.00	2494.0
74.00	3863.0
75.00	10520.0
76.00	885.0
77.00	109.0
77.90	91.0
78.90	1113.0
79.90	360.0
81.00	1089.0
81.90	245.0
87.00	770.0
87.90	699.0
88.70	104.0
89.20	59.0
90.90	118.0
92.00	724.0
93.00	1054.0
94.10	2395.0
95.00	18576.0
96.10	1433.0
97.10	88.0
103.00	228.0
103.70	182.0
105.00	65.0
106.00	67.0
110.00	63.0
110.80	108.0
115.00	115.0
115.90	94.0
117.00	214.0
118.00	251.0
119.00	364.0
120.80	55.0
124.80	474.0
126.00	104.0
127.90	74.0
129.80	80.0
131.00	66.0
131.90	58.0
133.10	1257.0
133.80	331.0
134.70	102.0
135.10	90.0
140.90	307.0
142.80	239.0
146.90	187.0
147.80	82.0
149.00	97.0
160.90	129.0
162.80	273.0
164.10	51.0
164.90	193.0
171.90	208.0
173.90	16321.0
175.00	1386.0
175.90	16424.0
176.90	1399.0
178.00	142.0
178.90	362.0
179.80	66.0
189.00	188.0
190.90	1271.0
192.00	345.0
193.00	2117.0

Instrument :
MSVOA_W
ClientSampleId :
BFB478

193.90	409.0
195.00	273.0
203.00	162.0
205.00	243.0
206.00	125.0
207.00	1050.0
208.00	210.0
208.90	107.0
234.80	155.0
249.00	1039.0
250.00	294.0
251.00	456.0
252.00	75.0
253.00	59.0
265.00	1213.0
266.10	243.0
266.90	227.0
278.40	97.0
279.40	204.0
281.00	13472.0
282.00	3027.0
283.00	2014.0
284.00	458.0
285.00	80.0

Instrument :
MSVOA_W
ClientSampleId :
BFB478

m/z	Abundance
36.10	262.0
37.00	1309.0
38.10	1027.0
39.00	493.0
40.00	909.0
44.00	251.0
45.00	303.0
47.20	298.0
48.00	141.0
49.00	1060.0
50.10	4505.0
51.10	1247.0
51.90	52.0
55.10	88.0
56.00	488.0
57.00	763.0
59.00	162.0
59.90	238.0
61.00	1419.0
62.00	1384.0
63.00	1011.0
64.10	135.0
68.00	2667.0
69.00	2616.0
70.10	258.0
71.80	100.0
73.00	1899.0
74.00	4457.0
75.00	13424.0
76.10	1126.0
77.10	112.0
77.90	64.0
78.90	1240.0
79.90	325.0
81.00	1315.0
81.90	276.0
87.00	952.0
87.90	866.0
90.90	174.0
92.00	755.0
93.00	1183.0
94.00	3123.0
95.00	23880.0
96.00	1620.0
97.10	99.0
103.00	224.0
104.00	202.0
104.90	84.0
106.00	174.0
111.00	89.0
115.00	76.0
115.90	103.0
117.00	246.0
117.90	132.0
118.90	318.0
124.90	235.0
125.60	155.0
127.90	84.0
129.80	125.0
133.10	776.0
134.90	102.0
136.90	56.0
141.00	276.0
141.80	60.0
142.90	363.0
146.80	127.0
147.90	112.0
148.80	73.0
160.80	94.0
162.80	127.0
163.80	54.0
164.90	142.0
171.90	224.0
174.00	19688.0
175.00	1976.0
175.90	19224.0
176.90	1546.0
178.00	140.0
179.00	264.0
189.00	73.0
191.00	842.0
192.00	258.0
193.00	1278.0
193.90	172.0
194.90	155.0
203.00	129.0
205.00	216.0
207.00	763.0
208.00	178.0
234.90	71.0
249.00	572.0
249.90	234.0

Instrument :
MSVOA_W
ClientSampleId :
BFB478

251.00	363.0
252.00	64.0
265.00	783.0
266.00	199.0
266.90	205.0
281.00	9745.0
282.10	2049.0
283.00	1571.0
283.90	236.0
285.00	103.0

Instrument :
MSVOA_W
ClientSampleId :
BFB478

m/z	Abundance
36.00	189.0
37.10	965.0
38.00	1007.0
39.00	369.0
40.00	870.0
44.00	212.0
45.00	255.0
47.00	263.0
48.00	152.0
49.00	816.0
50.00	3766.0
51.00	1036.0
54.90	66.0
56.00	412.0
57.00	725.0
59.00	95.0
59.90	199.0
61.00	1098.0
62.00	1049.0
63.00	899.0
64.00	114.0
68.00	2261.0
69.00	2235.0
70.00	178.0
72.10	166.0
73.00	1348.0
74.00	3944.0
75.00	10667.0
76.10	991.0
76.90	153.0
77.80	51.0
79.00	1087.0
79.90	295.0
81.00	1122.0
81.90	238.0
86.90	764.0
87.90	848.0
90.80	116.0
92.00	572.0
93.00	1046.0
94.00	2842.0
95.00	19672.0
96.00	1394.0
97.10	74.0
102.90	62.0
103.80	149.0
105.00	88.0
105.90	164.0
110.90	68.0
115.80	66.0
116.90	188.0
118.00	167.0
118.90	181.0
125.10	132.0
127.90	79.0
128.70	51.0
129.70	92.0
133.10	371.0
134.20	56.0
134.80	92.0
140.90	297.0
142.90	306.0
146.90	77.0
148.00	68.0
162.90	80.0
171.20	52.0
171.90	119.0
173.90	21584.0
175.00	1600.0
175.90	20328.0
176.90	1538.0
177.70	72.0
178.90	131.0
191.00	324.0
192.10	108.0
192.90	854.0
193.90	112.0
202.90	82.0
205.00	100.0
207.00	310.0
207.70	53.0
249.00	317.0
249.80	90.0
251.00	111.0
265.00	345.0
266.00	98.0
266.90	111.0
279.20	86.0
281.00	4643.0
282.00	1574.0
282.90	894.0
283.90	191.0

Instrument :
MSVOA_W
ClientSampleId :
BFB478

285.00

58.0

Instrument :

MSVOA_W

ClientSampleId :

BFB478