

Data Path : Z:\voasrv\HPCHEM1\MSVOA_W\Data\VW121322\
 Data File : VW025145.D
 Acq On : 13 Dec 2022 15:05
 Operator : SY/MD
 Sample : VSTDCCC025EC
 Misc : 5.00g/10mL/MSVOA_W/SOIL
 ALS Vial : 1 Sample Multiplier: 1

Instrument :
 MSVOA_W
 ClientSampleId :
 VSTD025511

Quant Time: Dec 13 22:04:27 2022
 Quant Method : Z:\voasrv\HPCHEM1\MSVOA_W\Method\SFAMWLM120822SMA.M
 Quant Title : SFAM01.0
 QLast Update : Tue Dec 13 22:02:49 2022
 Response via : Initial Calibration

Compound	R.T.	QIon	Response	Conc	Units	Dev(Min)
Internal Standards						
1) 1,4-Difluorobenzene	8.842	114	421823	25.000	ug/L	0.00
28) Chlorobenzene-d5	11.634	117	379212	25.000	ug/L	0.00
58) 1,4-Dichlorobenzene-d4	13.554	152	192280	25.000	ug/L	0.00
System Monitoring Compounds						
4) Vinyl Chloride-d3	2.349	65	115223	23.696	ug/L	0.00
Spiked Amount	25.000	Range 30 - 150	Recovery =	94.800%		
7) Chloroethane-d5	2.885	69	79472	25.311	ug/L	0.00
Spiked Amount	25.000	Range 30 - 150	Recovery =	101.240%		
11) 1,1-Dichloroethene-d2	4.019	63	262158	24.609	ug/L	0.00
Spiked Amount	25.000	Range 45 - 110	Recovery =	98.440%		
21) 2-Butanone-d5	7.074	46	57661	47.233	ug/L	-0.01
Spiked Amount	50.000	Range 20 - 135	Recovery =	94.460%		
24) Chloroform-d	7.647	84	276966	25.437	ug/L	0.00
Spiked Amount	25.000	Range 40 - 150	Recovery =	101.760%		
26) 1,2-Dichloroethane-d4	8.305	65	138018	24.995	ug/L	0.00
Spiked Amount	25.000	Range 70 - 130	Recovery =	100.000%		
32) Benzene-d6	8.275	84	558802	25.127	ug/L	0.00
Spiked Amount	25.000	Range 20 - 135	Recovery =	100.520%		
36) 1,2-Dichloropropane-d6	9.274	67	161009	24.882	ug/L	0.00
Spiked Amount	25.000	Range 70 - 120	Recovery =	99.520%		
41) Toluene-d8	10.323	98	505772	25.083	ug/L	0.00
Spiked Amount	25.000	Range 30 - 130	Recovery =	100.320%		
43) trans-1,3-Dichloroprop...	10.573	79	66356	24.276	ug/L	0.00
Spiked Amount	25.000	Range 30 - 135	Recovery =	97.120%		
47) 2-Hexanone-d5	10.920	63	45235	47.647	ug/L	0.00
Spiked Amount	50.000	Range 20 - 135	Recovery =	95.300%		
56) 1,1,2,2-Tetrachloroeth...	12.688	84	113616	23.777	ug/L	0.00
Spiked Amount	25.000	Range 45 - 120	Recovery =	95.120%		
66) 1,2-Dichlorobenzene-d4	13.853	152	158640	24.341	ug/L	0.00
Spiked Amount	25.000	Range 75 - 120	Recovery =	97.360%		
Target Compounds						
2) Dichlorodifluoromethane	2.007	85	53719	21.013	ug/L	95
3) Chloromethane	2.215	50	105741	23.491	ug/L	97
5) Vinyl chloride	2.361	62	139126	24.707	ug/L	98
6) Bromomethane	2.782	94	71630	24.549	ug/L	99
8) Chloroethane	2.922	64	68332	26.236	ug/L	100
9) Trichlorofluoromethane	3.263	101	106898	25.331	ug/L	99
10) 1,1,2-Trichloro-1,2,2-...	4.068	101	138252	24.801	ug/L	99
12) 1,1-Dichloroethene	4.038	96	133136	25.051	ug/L	99
13) Acetone	4.123	43	47329	37.716	ug/L	99
14) Carbon disulfide	4.385	76	421180	24.825	ug/L	99
15) Methyl Acetate	4.672	43	50534	24.672	ug/L	96
16) Methylene chloride	4.909	84	153037	23.212	ug/L	97
17) trans-1,2-Dichloroethene	5.428	96	146520	26.007	ug/L	99
18) Methyl tert-butyl Ether	5.428	73	222484	26.614	ug/L	100
19) 1,1-Dichloroethane	6.214	63	266630	26.191	ug/L	99
20) cis-1,2-Dichloroethene	7.171	96	159816	26.827	ug/L	94
22) 2-Butanone	7.165	43	68637	43.476	ug/L	97
23) Bromochloromethane	7.513	128	67576	26.807	ug/L	94
25) Chloroform	7.677	83	275386	26.732	ug/L	100

Data Path : Z:\voasrv\HPCHEM1\MSVOA_W\Data\VW121322\
 Data File : VW025145.D
 Acq On : 13 Dec 2022 15:05
 Operator : SY/MD
 Sample : VSTDCCC025EC
 Misc : 5.00g/10mL/MSVOA_W/SOIL
 ALS Vial : 1 Sample Multiplier: 1

Instrument :
 MSVOA_W
 ClientSampleId :
 VSTD025511

Quant Time: Dec 13 22:04:27 2022
 Quant Method : Z:\voasrv\HPCHEM1\MSVOA_W\Method\SFAMWLM120822SMA.M
 Quant Title : SFAM01.0
 QLast Update : Tue Dec 13 22:02:49 2022
 Response via : Initial Calibration

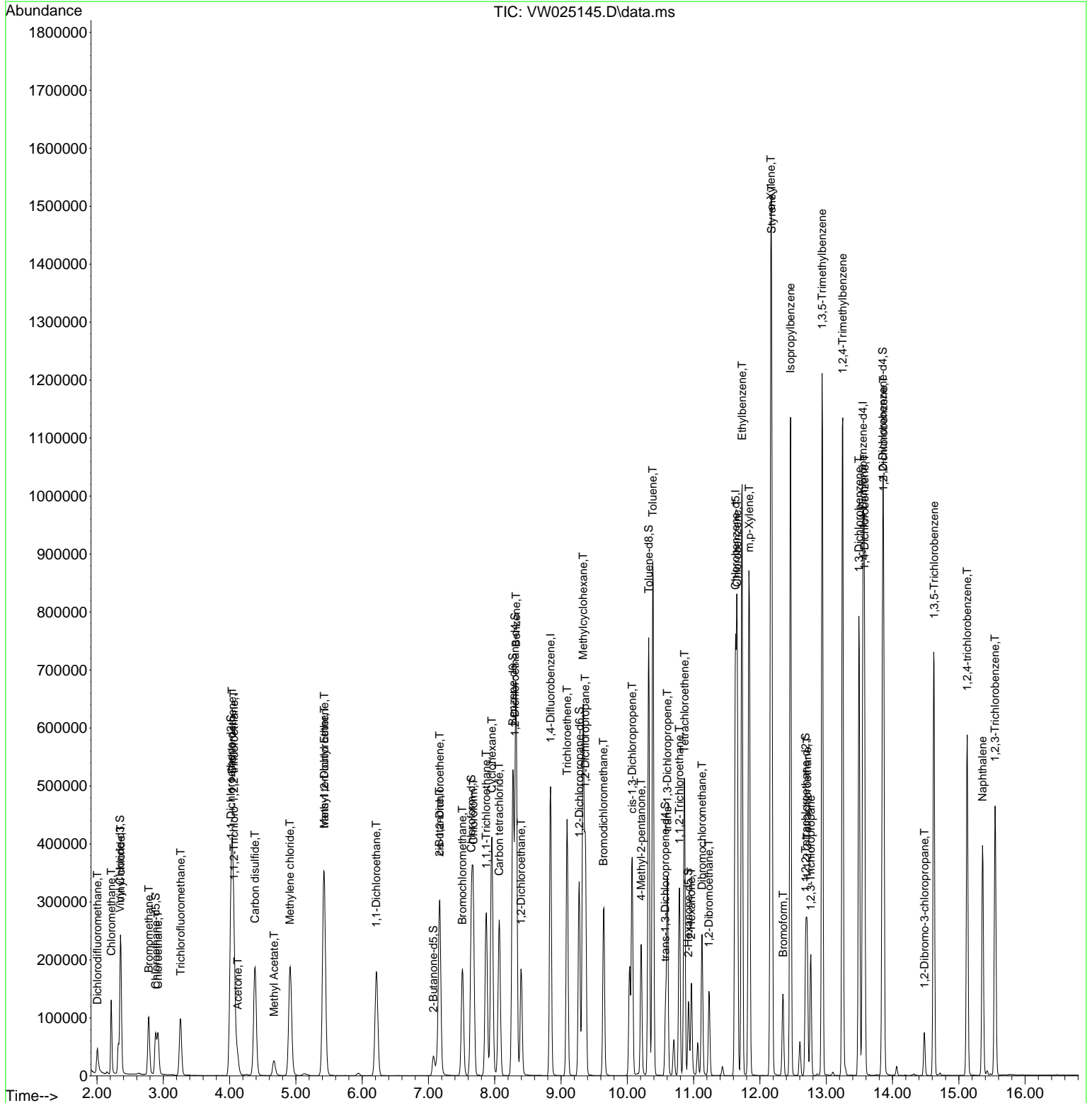
Compound	R.T.	QIon	Response	Conc	Units	Dev(Min)
27) 1,2-Dichloroethane	8.396	62	170535	26.292	ug/L	100
29) Cyclohexane	7.958	56	240486	25.044	ug/L	99
30) 1,1,1-Trichloroethane	7.872	97	230226	25.719	ug/L	100
31) Carbon tetrachloride	8.067	117	208083	25.281	ug/L	98
33) Benzene	8.323	78	614328	26.152	ug/L	100
34) Trichloroethene	9.091	95	156573	25.445	ug/L	94
35) Methylcyclohexane	9.335	83	268867	24.634	ug/L	99
37) 1,2-Dichloropropane	9.366	63	149331	26.356	ug/L	99
38) Bromodichloromethane	9.640	83	198520	26.522	ug/L	99
39) cis-1,3-Dichloropropene	10.073	75	230902	26.672	ug/L	99
40) 4-Methyl-2-pentanone	10.207	43	144858	49.874	ug/L	100
42) Toluene	10.384	91	646558	26.269	ug/L	96
44) trans-1,3-Dichloropropene	10.603	75	191412	25.817	ug/L	100
45) 1,1,2-Trichloroethane	10.786	97	105294	26.041	ug/L	95
46) Tetrachloroethene	10.866	164	112118	25.030	ug/L	95
48) 2-Hexanone	10.963	43	99827	47.055	ug/L	100
49) Dibromochloromethane	11.128	129	123232	25.378	ug/L	91
50) 1,2-Dibromoethane	11.231	107	97880	26.001	ug/L	99
51) Chlorobenzene	11.658	112	413188	26.232	ug/L	99
52) Ethylbenzene	11.731	91	732498	26.262	ug/L	97
53) m,p-Xylene	11.841	106	282279	26.500	ug/L	95
54) o-Xylene	12.164	106	274518	27.042	ug/L	95
55) Styrene	12.176	104	469113	27.287	ug/L	97
57) 1,1,2,2-Tetrachloroethane	12.713	83	120475	25.478	ug/L	94
59) Bromoform	12.353	173	64057	24.260	ug/L	99
60) Isopropylbenzene	12.463	105	750985	25.480	ug/L	99
61) 1,2,3-Trichloropropane	12.768	75	88130	23.846	ug/L	99
62) 1,3,5-Trimethylbenzene	12.938	105	647785	25.659	ug/L	99
63) 1,2,4-Trimethylbenzene	13.249	105	632772	25.800	ug/L	100
64) 1,3-Dichlorobenzene	13.493	146	313654	25.995	ug/L	98
65) 1,4-Dichlorobenzene	13.578	146	314450	25.878	ug/L	97
67) 1,2-Dichlorobenzene	13.865	146	280465	26.653	ug/L	97
68) 1,2-Dibromo-3-chloropr...	14.481	75	19786	22.962	ug/L	93
69) 1,3,5-Trichlorobenzene	14.627	180	217121	25.342	ug/L	97
70) 1,2,4-trichlorobenzene	15.127	180	177042	25.754	ug/L	99
71) Naphthalene	15.359	128	336210	24.948	ug/L	99
72) 1,2,3-Trichlorobenzene	15.548	180	150570	24.993	ug/L	98

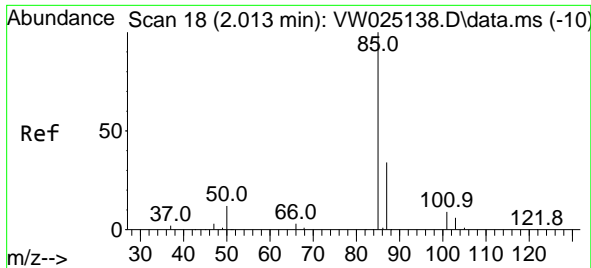
(#) = qualifier out of range (m) = manual integration (+) = signals summed

Data Path : Z:\voasrv\HPCHEM1\MSVOA_W\Data\VW121322\
 Data File : VW025145.D
 Acq On : 13 Dec 2022 15:05
 Operator : SY/MD
 Sample : VSTDCCC025EC
 Misc : 5.00g/10mL/MSVOA_W/SOIL
 ALS Vial : 1 Sample Multiplier: 1

Instrument :
 MSVOA_W
 ClientSampleId :
 VSTD025511

Quant Time: Dec 13 22:04:27 2022
 Quant Method : Z:\voasrv\HPCHEM1\MSVOA_W\Method\SFAMWLM120822SMA.M
 Quant Title : SFAM01.0
 QLast Update : Tue Dec 13 22:02:49 2022
 Response via : Initial Calibration

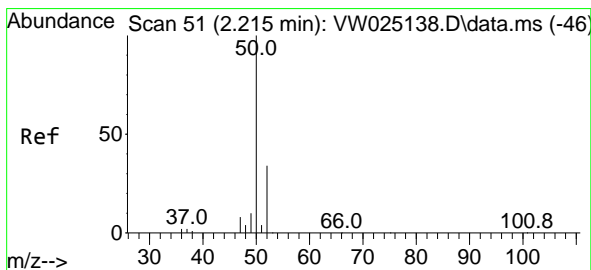
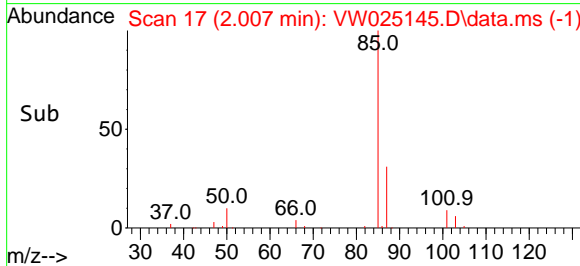
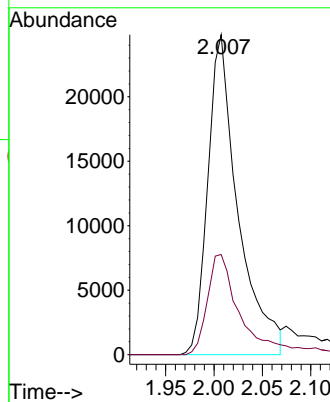
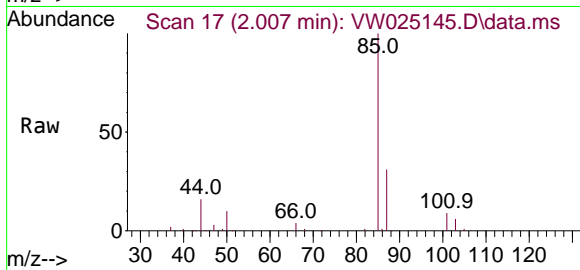




#2
 Dichlorodifluoromethane
 Concen: 21.013 ug/L
 RT: 2.007 min Scan# 1
 Delta R.T. -0.006 min
 Lab File: VW025145.D
 Acq: 13 Dec 2022 15:05

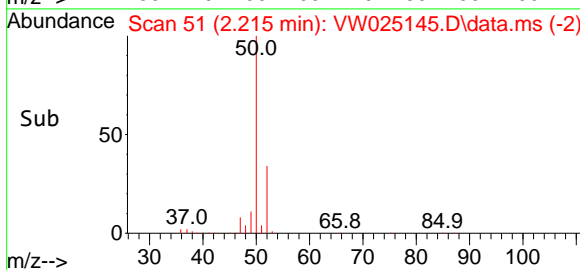
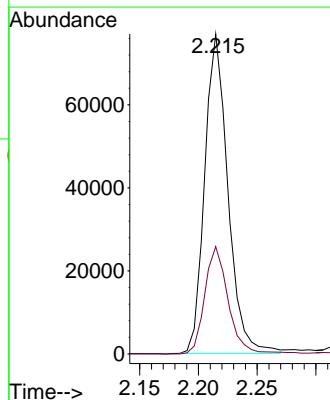
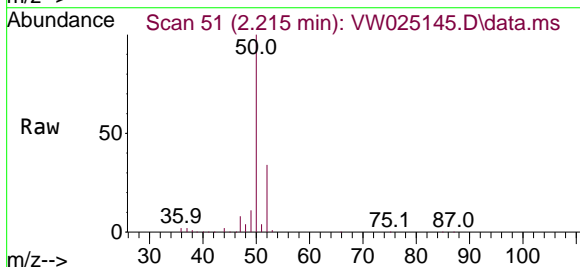
Instrument :
 MSVOA_W
 ClientSampleId :
 VSTD025511

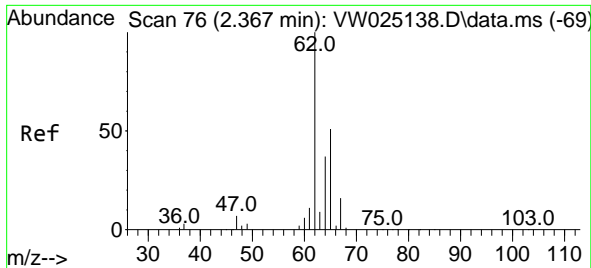
Tgt Ion: 85 Resp: 53719
 Ion Ratio Lower Upper
 85 100
 87 34.2 25.0 37.6



#3
 Chloromethane
 Concen: 23.491 ug/L
 RT: 2.215 min Scan# 51
 Delta R.T. 0.000 min
 Lab File: VW025145.D
 Acq: 13 Dec 2022 15:05

Tgt Ion: 50 Resp: 105741
 Ion Ratio Lower Upper
 50 100
 52 33.5 22.1 41.1

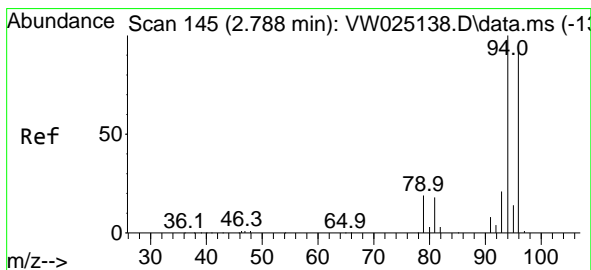
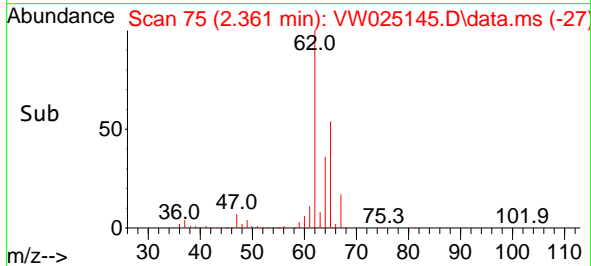
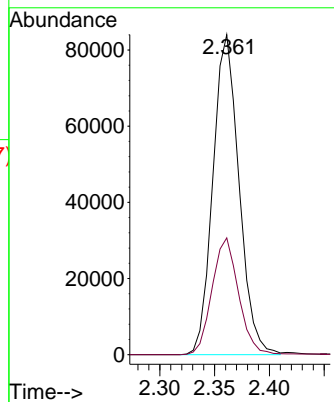
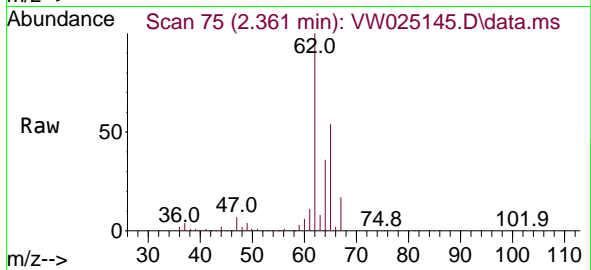




#5
 Vinyl chloride
 Concen: 24.707 ug/L
 RT: 2.361 min Scan# 71
 Delta R.T. -0.006 min
 Lab File: VW025145.D
 Acq: 13 Dec 2022 15:05

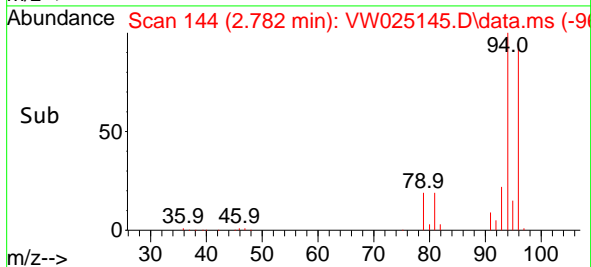
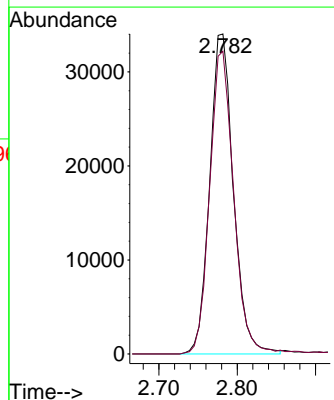
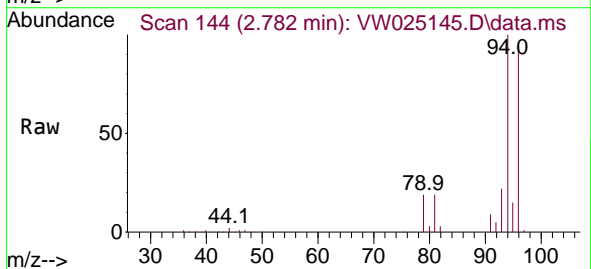
Instrument :
 MSVOA_W
 ClientSampleId :
 VSTD025511

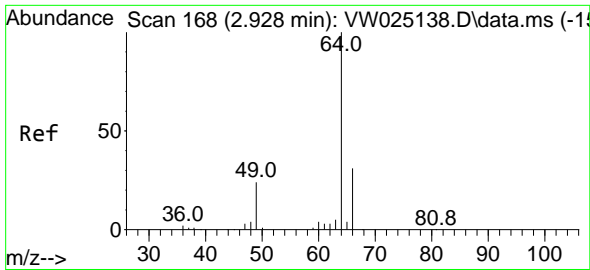
Tgt Ion: 62 Resp: 139126
 Ion Ratio Lower Upper
 62 100
 64 36.5 24.8 46.1



#6
 Bromomethane
 Concen: 24.549 ug/L
 RT: 2.782 min Scan# 144
 Delta R.T. -0.006 min
 Lab File: VW025145.D
 Acq: 13 Dec 2022 15:05

Tgt Ion: 94 Resp: 71630
 Ion Ratio Lower Upper
 94 100
 96 94.6 66.7 123.9

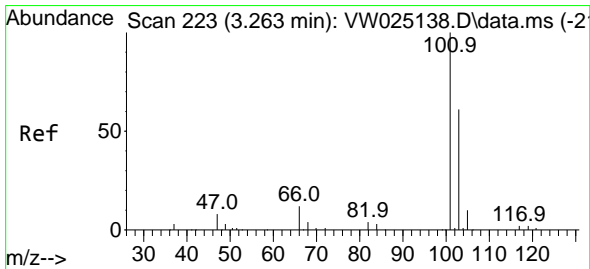
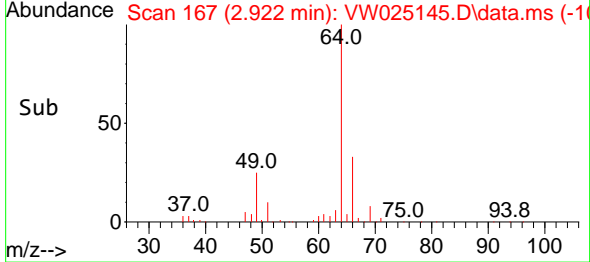
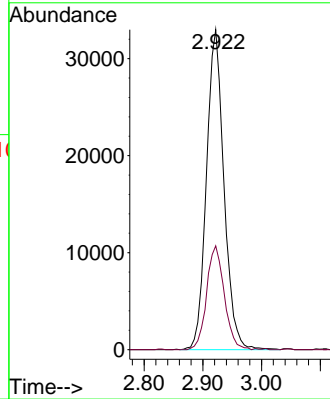
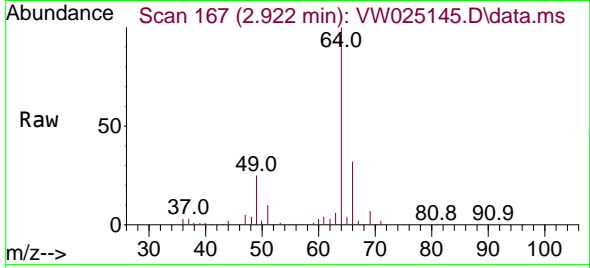




#8
 Chloroethane
 Concen: 26.236 ug/L
 RT: 2.922 min Scan# 167
 Delta R.T. -0.006 min
 Lab File: VW025145.D
 Acq: 13 Dec 2022 15:05

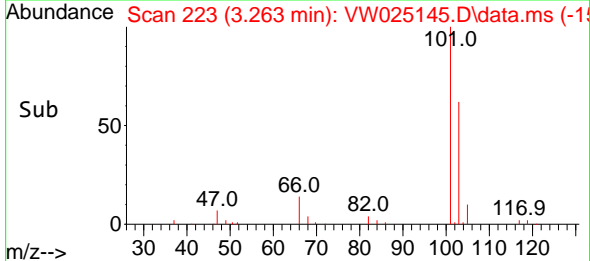
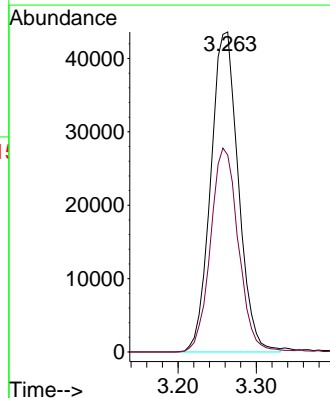
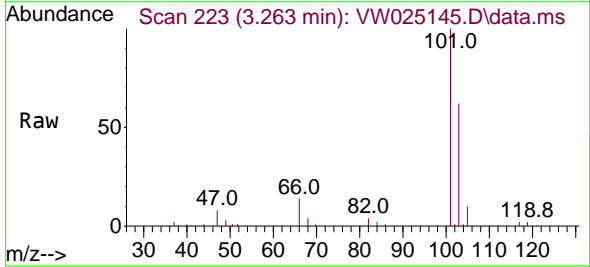
Instrument : MSVOA_W
 ClientSampleId : VSTD025511

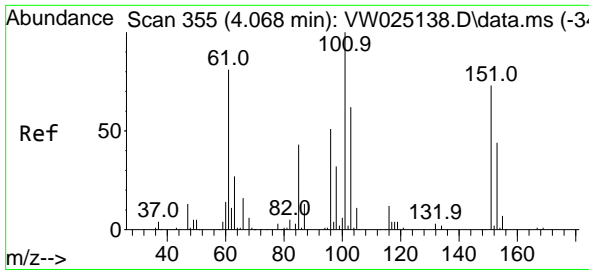
Tgt Ion: 64 Resp: 68332
 Ion Ratio Lower Upper
 64 100
 66 32.4 22.7 42.1



#9
 Trichlorofluoromethane
 Concen: 25.331 ug/L
 RT: 3.263 min Scan# 223
 Delta R.T. 0.000 min
 Lab File: VW025145.D
 Acq: 13 Dec 2022 15:05

Tgt Ion:101 Resp: 106898
 Ion Ratio Lower Upper
 101 100
 103 64.3 50.9 76.3

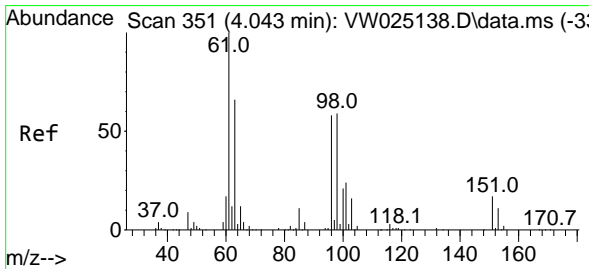
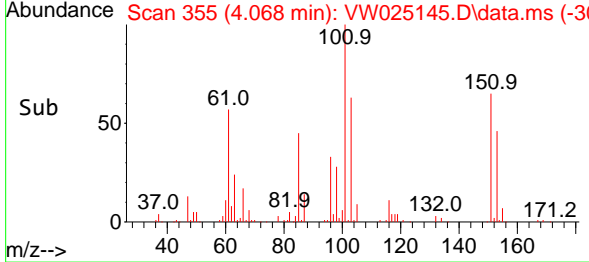
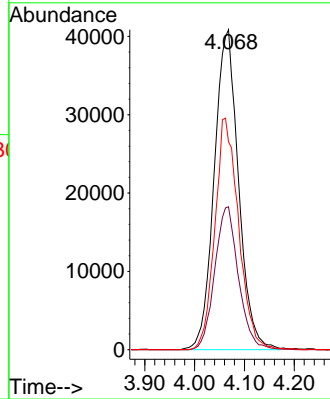
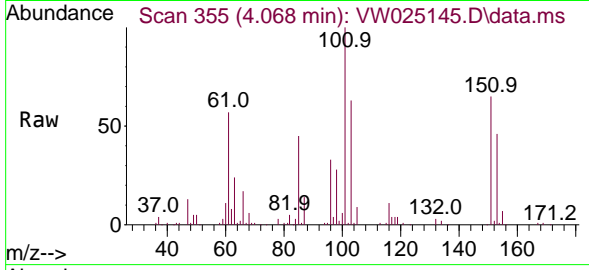




#10
 1,1,2-Trichloro-1,2,2-trifluoroethane
 Concen: 24.801 ug/L
 RT: 4.068 min Scan# 310
 Delta R.T. 0.000 min
 Lab File: VW025145.D
 Acq: 13 Dec 2022 15:05

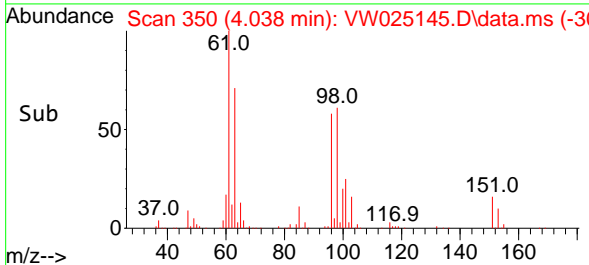
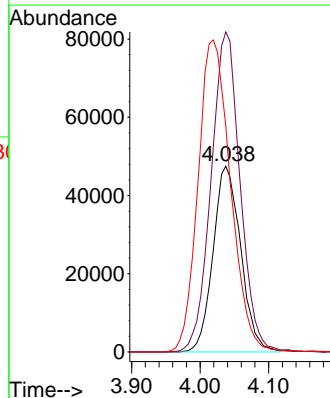
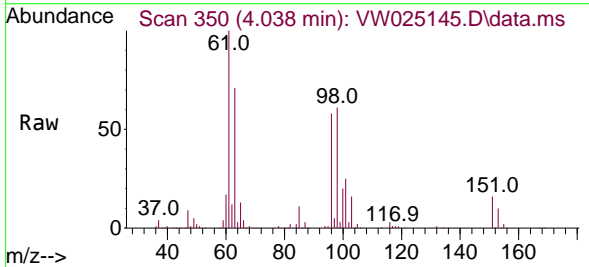
Instrument :
 MSVOA_W
 ClientSampleId :
 VSTD025511

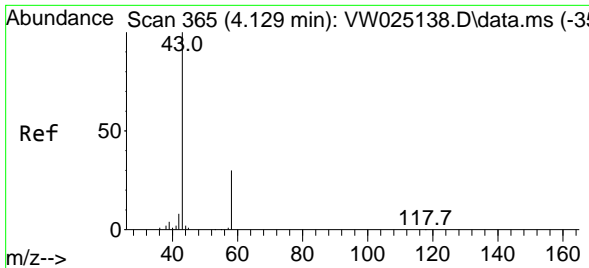
Tgt Ion:101 Resp: 138252
 Ion Ratio Lower Upper
 101 100
 85 43.7 34.6 52.0
 151 70.6 57.7 86.5



#12
 1,1-Dichloroethene
 Concen: 25.051 ug/L
 RT: 4.038 min Scan# 350
 Delta R.T. -0.006 min
 Lab File: VW025145.D
 Acq: 13 Dec 2022 15:05

Tgt Ion: 96 Resp: 133136
 Ion Ratio Lower Upper
 96 100
 61 172.2 120.8 224.4
 63 121.6 84.1 156.1

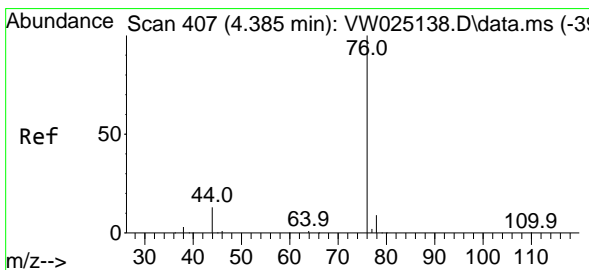
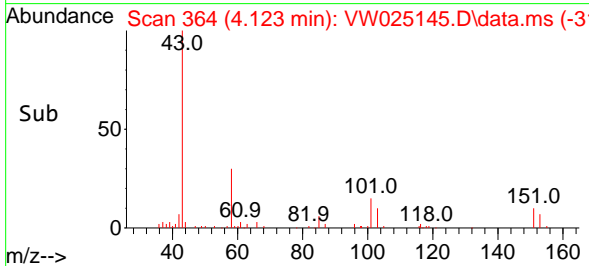
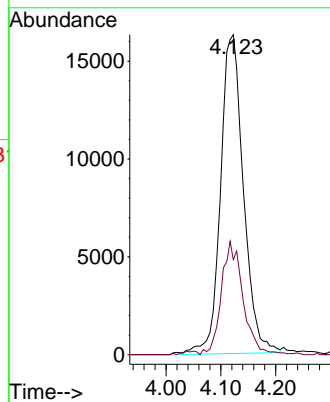
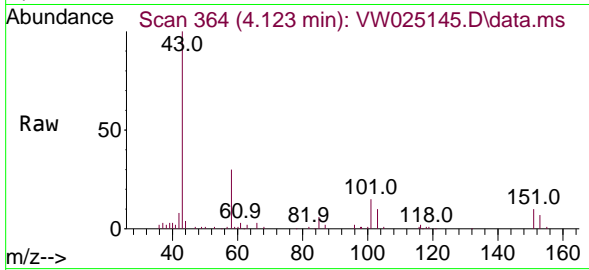




#13
 Acetone
 Concen: 37.716 ug/L
 RT: 4.123 min Scan# 364
 Delta R.T. -0.006 min
 Lab File: VW025145.D
 Acq: 13 Dec 2022 15:05

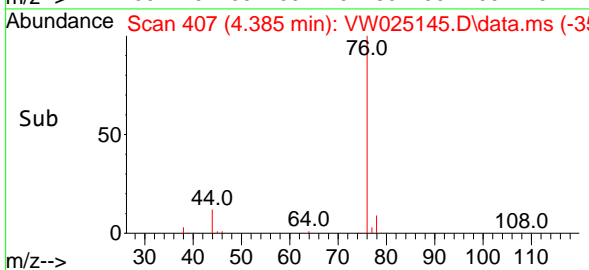
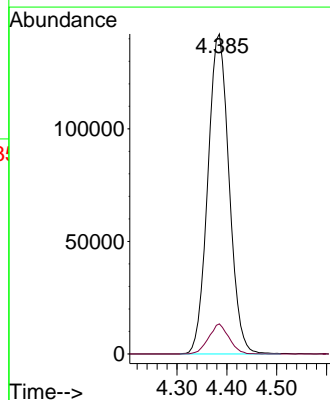
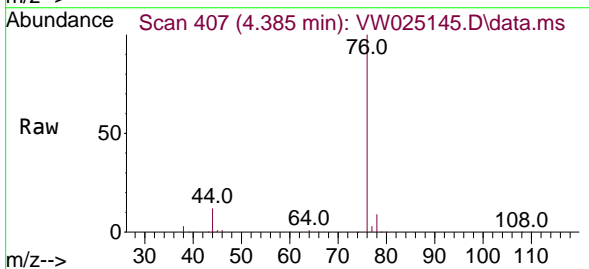
Instrument : MSVOA_W
 ClientSampleId : VSTD025511

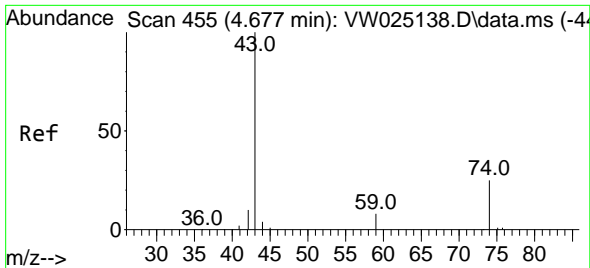
Tgt Ion: 43 Resp: 47329
 Ion Ratio Lower Upper
 43 100
 58 33.2 0.0 65.2



#14
 Carbon disulfide
 Concen: 24.825 ug/L
 RT: 4.385 min Scan# 407
 Delta R.T. 0.000 min
 Lab File: VW025145.D
 Acq: 13 Dec 2022 15:05

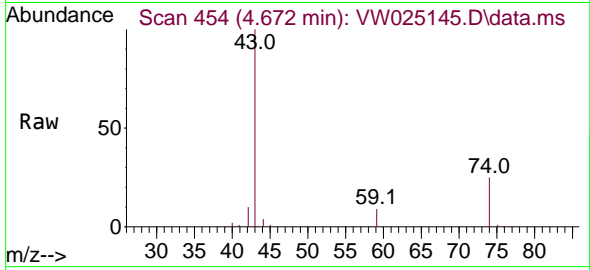
Tgt Ion: 76 Resp: 421180
 Ion Ratio Lower Upper
 76 100
 78 9.4 7.3 10.9



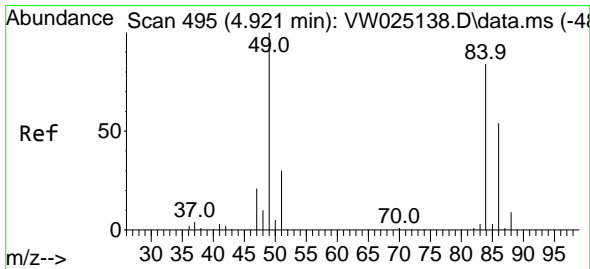
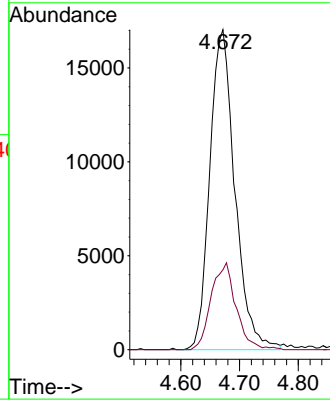
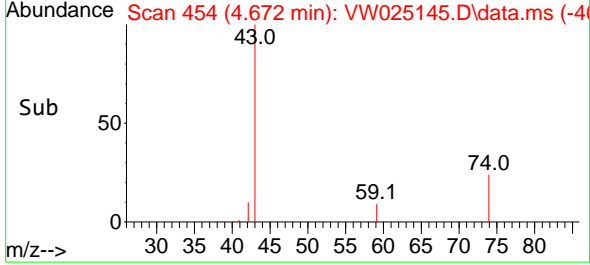


#15
 Methyl Acetate
 Concen: 24.672 ug/L
 RT: 4.672 min Scan# 411
 Delta R.T. -0.006 min
 Lab File: VW025145.D
 Acq: 13 Dec 2022 15:05

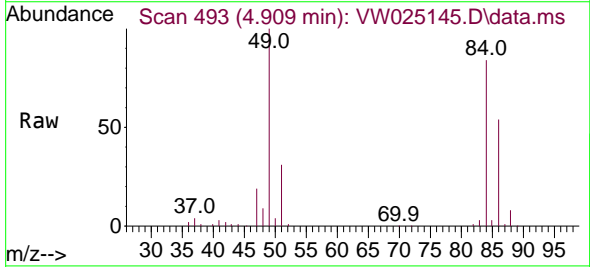
Instrument :
 MSVOA_W
 ClientSampleId :
 VSTD025511



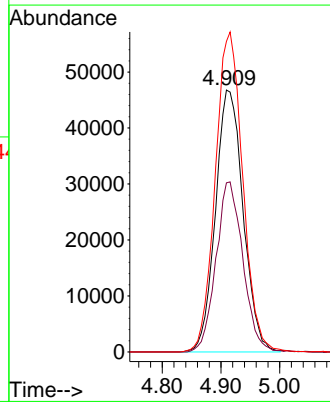
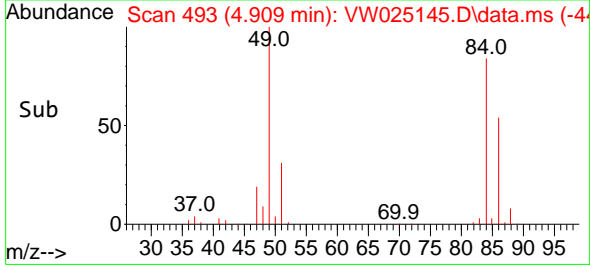
Tgt Ion: 43 Resp: 50534
 Ion Ratio Lower Upper
 43 100
 74 26.6 19.5 29.3

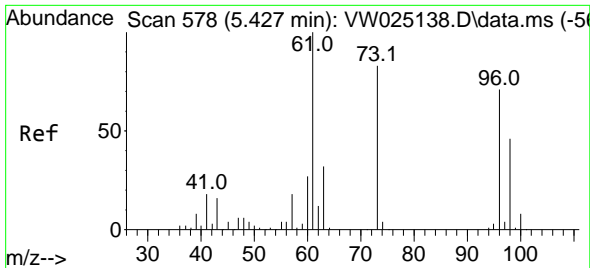


#16
 Methylene chloride
 Concen: 23.212 ug/L
 RT: 4.909 min Scan# 493
 Delta R.T. -0.012 min
 Lab File: VW025145.D
 Acq: 13 Dec 2022 15:05



Tgt Ion: 84 Resp: 153037
 Ion Ratio Lower Upper
 84 100
 86 64.6 45.0 83.6
 49 118.6 86.3 160.3



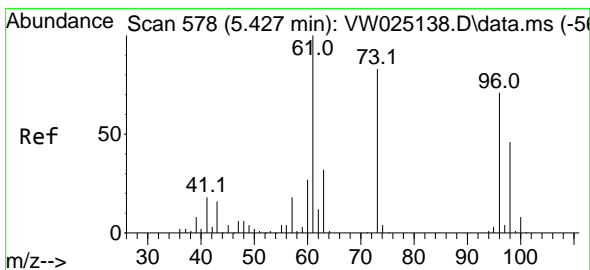
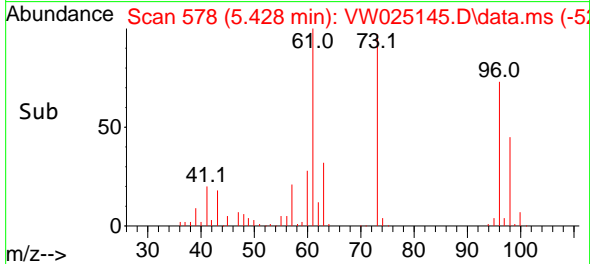
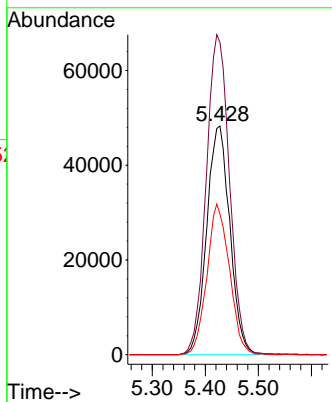
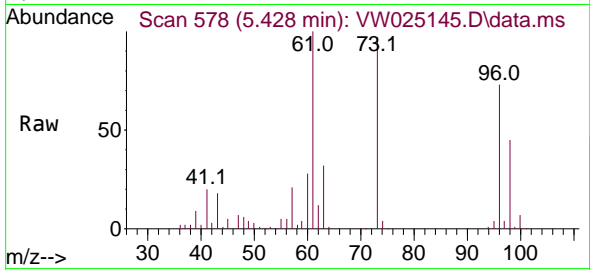


#17
 trans-1,2-Dichloroethene
 Concen: 26.007 ug/L
 RT: 5.428 min Scan# 578
 Delta R.T. 0.000 min
 Lab File: VW025145.D
 Acq: 13 Dec 2022 15:05

Instrument : MSVOA_W
 ClientSampleId : VSTD025511

Tgt Ion: 96 Resp: 146520

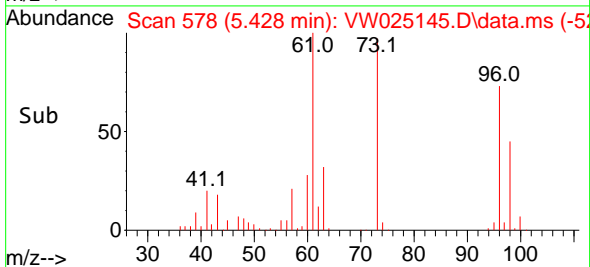
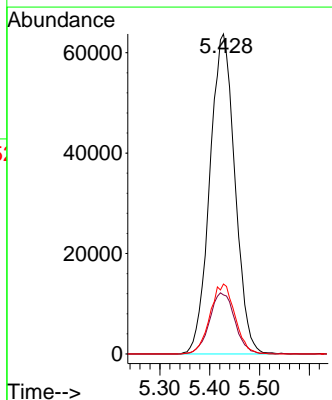
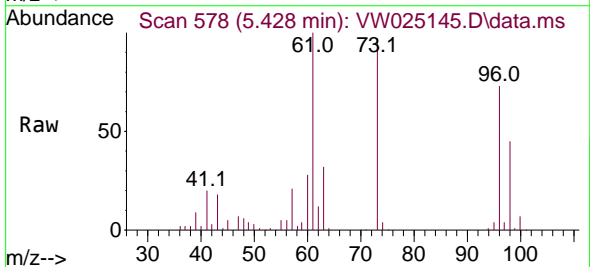
Ion	Ratio	Lower	Upper
96	100		
61	136.5	95.5	177.3
98	61.6	44.0	81.8

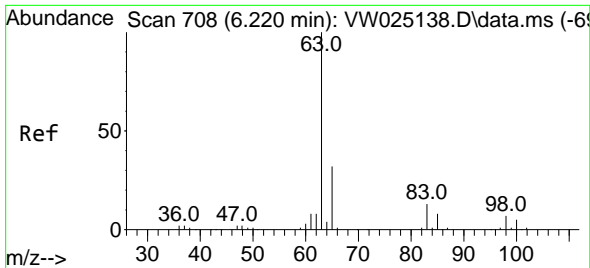


#18
 Methyl tert-butyl Ether
 Concen: 26.614 ug/L
 RT: 5.428 min Scan# 578
 Delta R.T. 0.000 min
 Lab File: VW025145.D
 Acq: 13 Dec 2022 15:05

Tgt Ion: 73 Resp: 222484

Ion	Ratio	Lower	Upper
73	100		
43	19.3	15.6	23.4
57	21.7	17.5	26.3

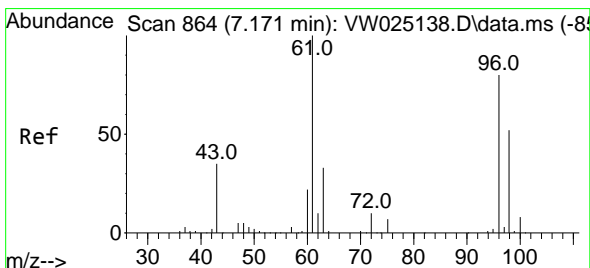
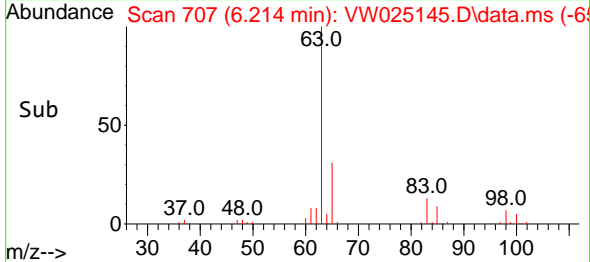
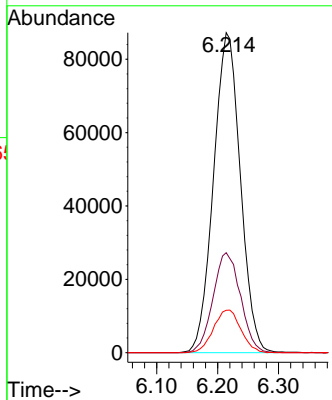
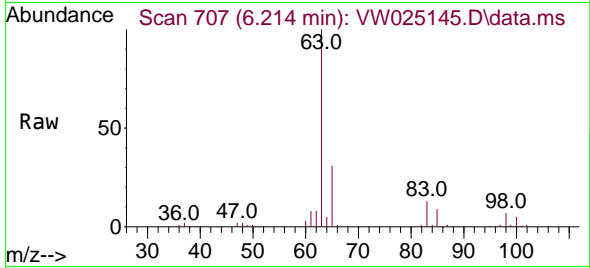




#19
 1,1-Dichloroethane
 Concen: 26.191 ug/L
 RT: 6.214 min Scan# 708
 Delta R.T. -0.006 min
 Lab File: VW025145.D
 Acq: 13 Dec 2022 15:05

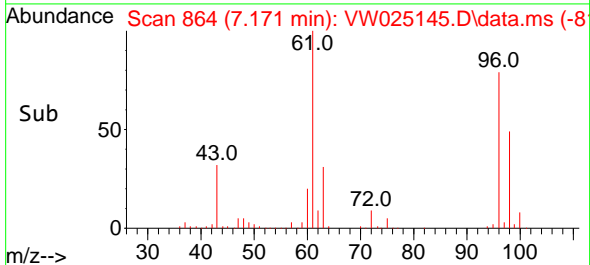
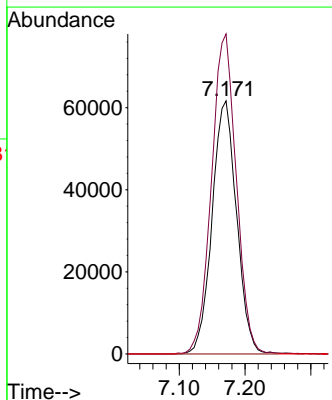
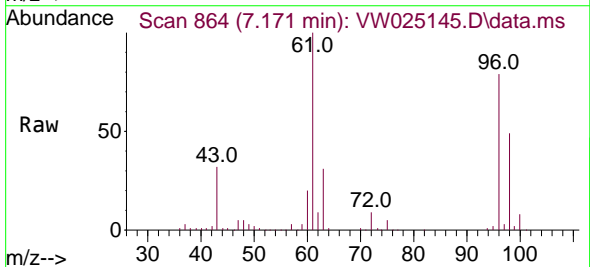
Instrument : MSVOA_W
 ClientSampleId : VSTD025511

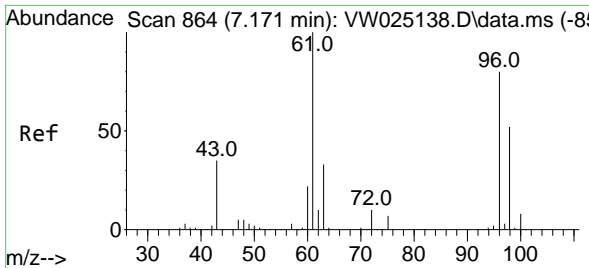
Tgt Ion	Resp	Lower	Upper
63	100		
65	31.2	22.2	41.2
83	13.2	9.4	17.6



#20
 cis-1,2-Dichloroethene
 Concen: 26.827 ug/L
 RT: 7.171 min Scan# 864
 Delta R.T. 0.000 min
 Lab File: VW025145.D
 Acq: 13 Dec 2022 15:05

Tgt Ion	Resp	Lower	Upper
96	100		
61	126.4	93.7	173.9
68	0.0	0.0	0.0

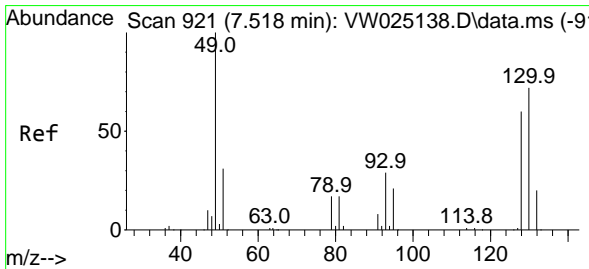
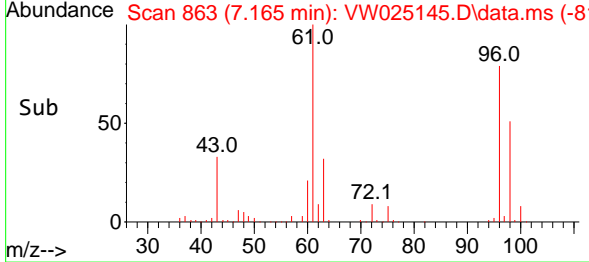
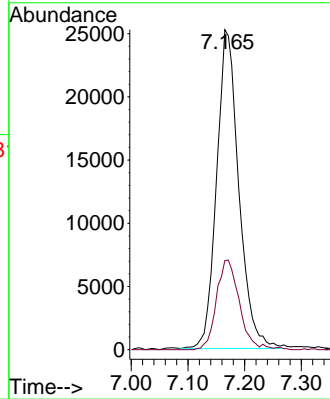
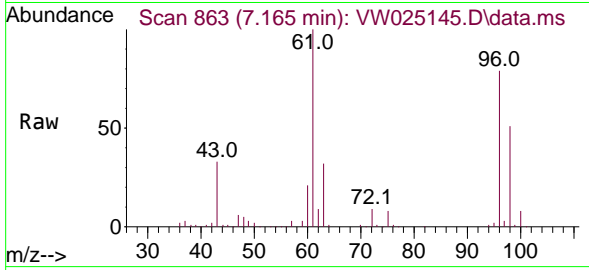




#22
 2-Butanone
 Concen: 43.476 ug/L
 RT: 7.165 min Scan# 80
 Delta R.T. -0.006 min
 Lab File: VW025145.D
 Acq: 13 Dec 2022 15:05

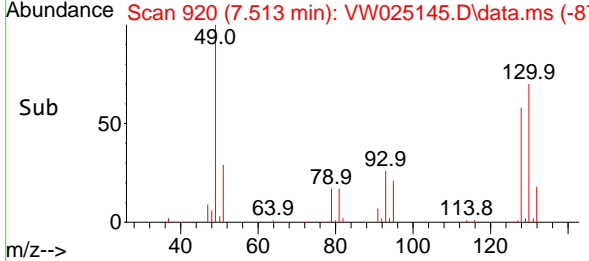
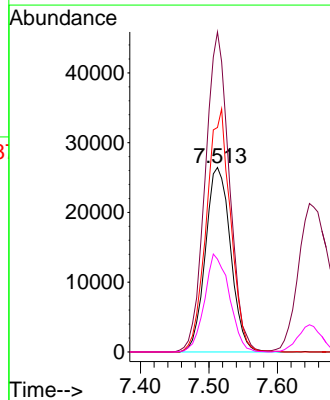
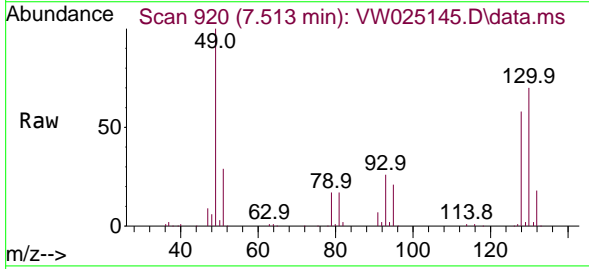
Instrument : MSVOA_W
 ClientSampleId : VSTD025511

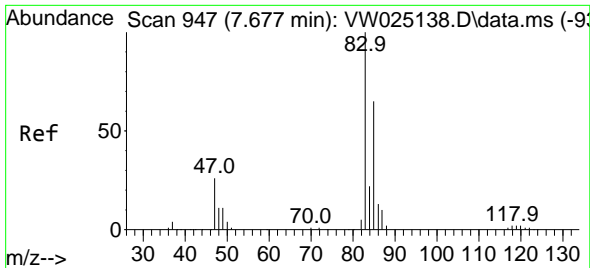
Tgt Ion: 43 Resp: 68637
 Ion Ratio Lower Upper
 43 100
 72 28.4 15.0 45.0



#23
 Bromochloromethane
 Concen: 26.807 ug/L
 RT: 7.513 min Scan# 920
 Delta R.T. -0.006 min
 Lab File: VW025145.D
 Acq: 13 Dec 2022 15:05

Tgt Ion:128 Resp: 67576
 Ion Ratio Lower Upper
 128 100
 49 173.5 114.1 211.9
 130 121.7 89.0 165.2
 51 50.3 41.3 61.9

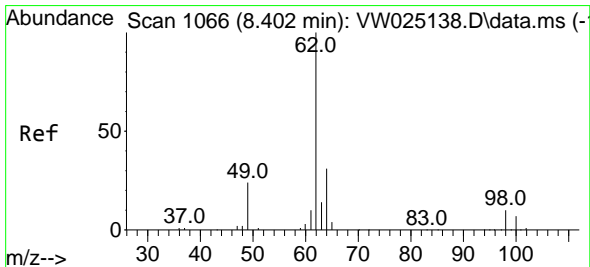
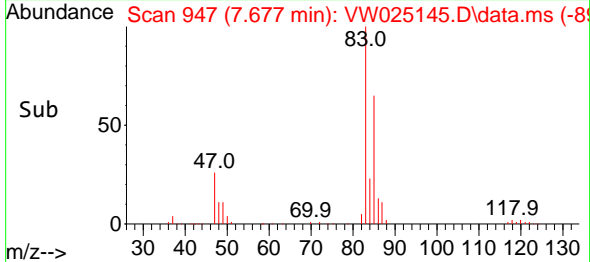
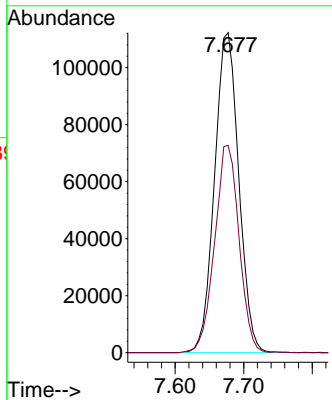
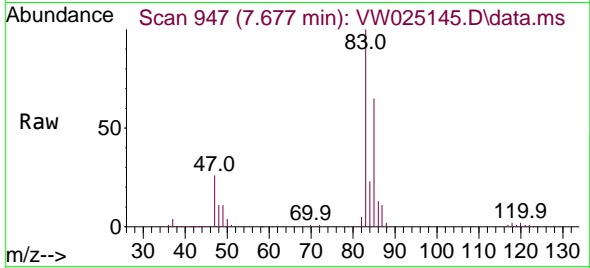




#25
 Chloroform
 Concen: 26.732 ug/L
 RT: 7.677 min Scan# 94
 Delta R.T. 0.000 min
 Lab File: VW025145.D
 Acq: 13 Dec 2022 15:05

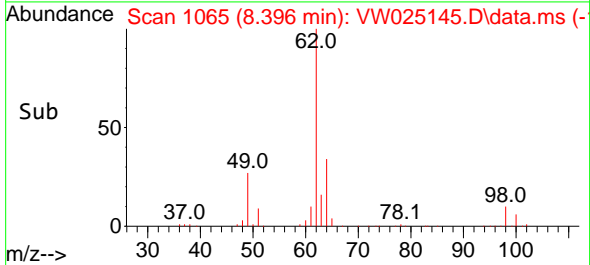
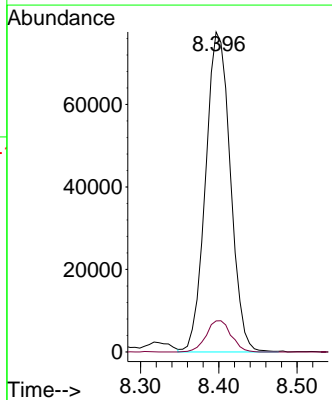
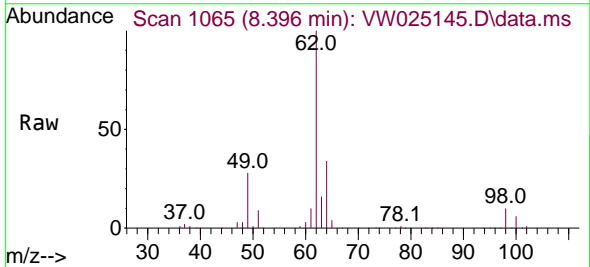
Instrument : MSVOA_W
 ClientSampleId : VSTD025511

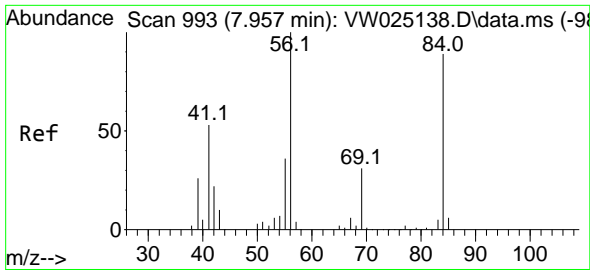
Tgt Ion: 83 Resp: 275386
 Ion Ratio Lower Upper
 83 100
 85 64.8 45.4 84.2



#27
 1,2-Dichloroethane
 Concen: 26.292 ug/L
 RT: 8.396 min Scan# 1065
 Delta R.T. -0.006 min
 Lab File: VW025145.D
 Acq: 13 Dec 2022 15:05

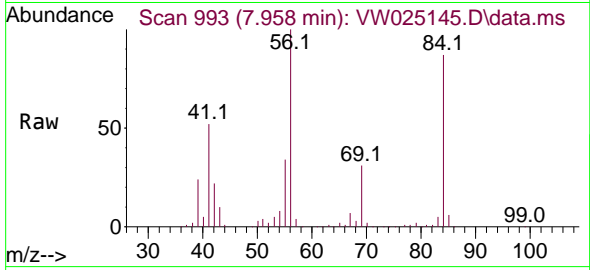
Tgt Ion: 62 Resp: 170535
 Ion Ratio Lower Upper
 62 100
 98 9.7 7.8 11.8





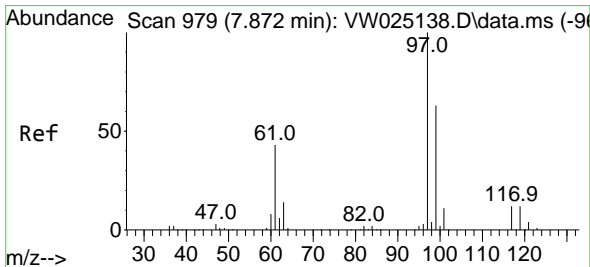
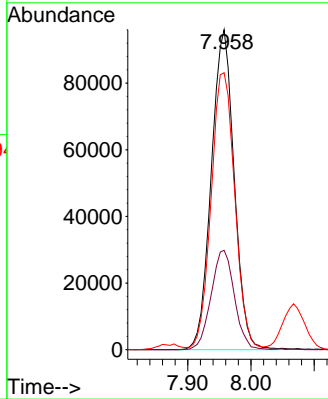
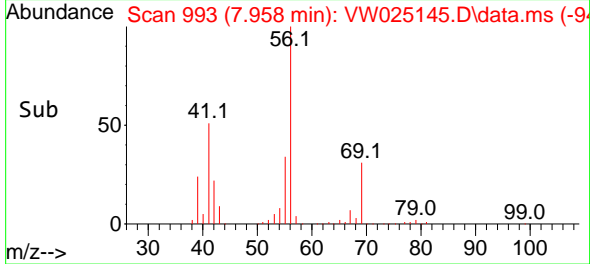
#29
 Cyclohexane
 Concen: 25.044 ug/L
 RT: 7.958 min Scan# 993
 Delta R.T. 0.000 min
 Lab File: VW025145.D
 Acq: 13 Dec 2022 15:05

Instrument : MSVOA_W
 ClientSampleId : VSTD025511

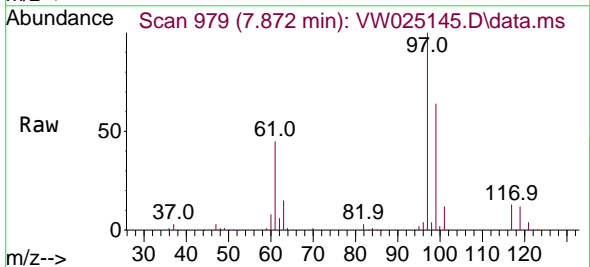


Tgt Ion: 56 Resp: 240486

Ion	Ratio	Lower	Upper
56	100		
69	31.7	25.0	37.6
84	89.7	70.9	106.3

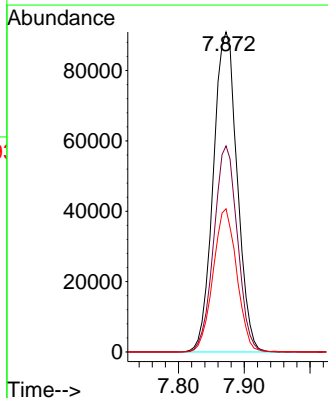
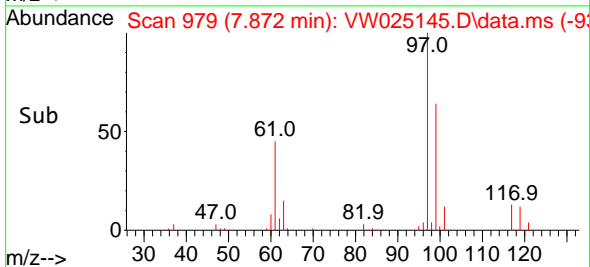


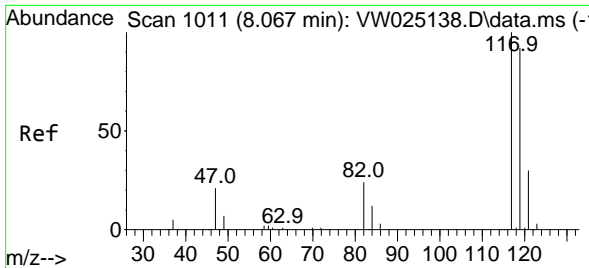
#30
 1,1,1-Trichloroethane
 Concen: 25.719 ug/L
 RT: 7.872 min Scan# 979
 Delta R.T. 0.000 min
 Lab File: VW025145.D
 Acq: 13 Dec 2022 15:05



Tgt Ion: 97 Resp: 230226

Ion	Ratio	Lower	Upper
97	100		
99	63.7	50.9	76.3
61	44.3	35.5	53.3

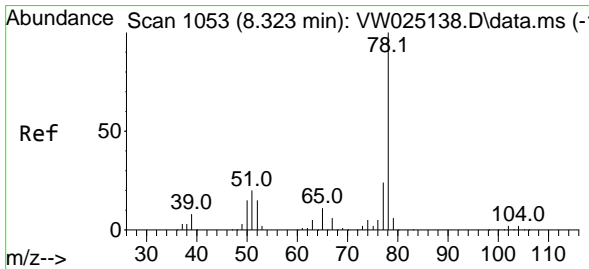
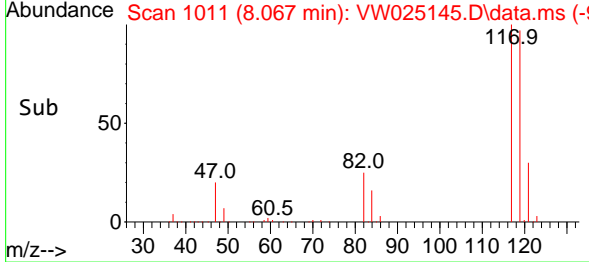
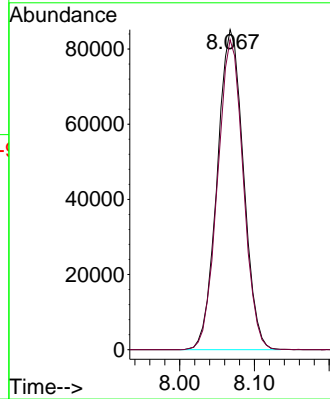
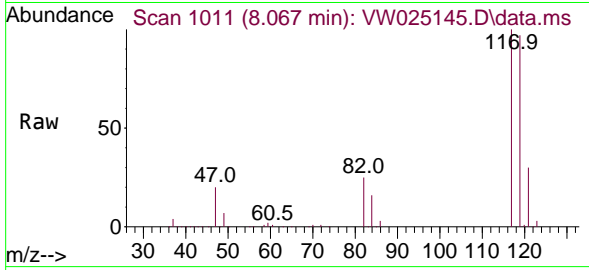




#31
 Carbon tetrachloride
 Concen: 25.281 ug/L
 RT: 8.067 min Scan# 1011
 Delta R.T. 0.000 min
 Lab File: VW025145.D
 Acq: 13 Dec 2022 15:05

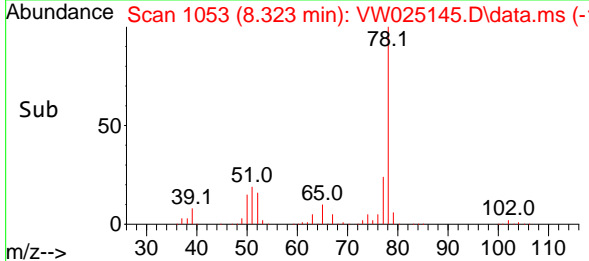
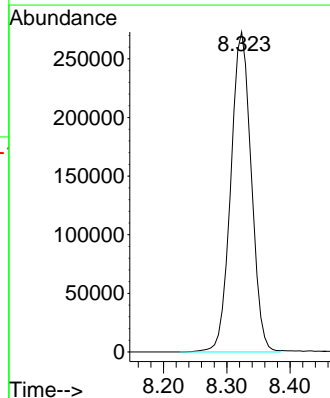
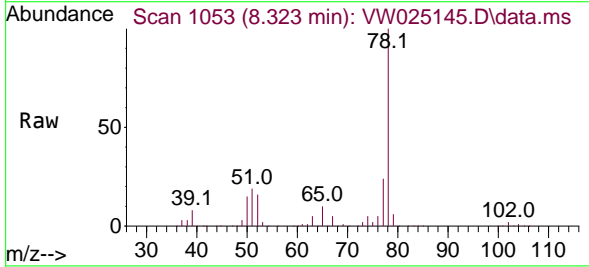
Instrument : MSVOA_W
 ClientSampleId : VSTD025511

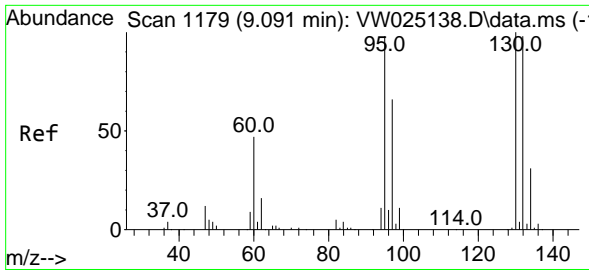
Tgt Ion:117 Resp: 208083
 Ion Ratio Lower Upper
 117 100
 119 94.7 77.0 115.4



#33
 Benzene
 Concen: 26.152 ug/L
 RT: 8.323 min Scan# 1053
 Delta R.T. 0.000 min
 Lab File: VW025145.D
 Acq: 13 Dec 2022 15:05

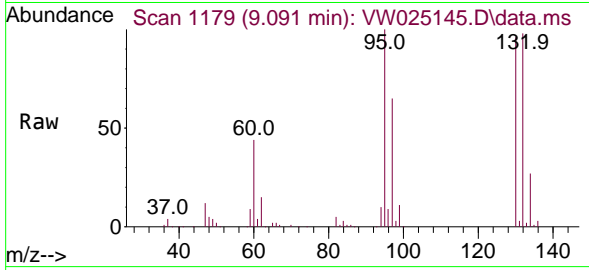
Tgt Ion: 78 Resp: 614328



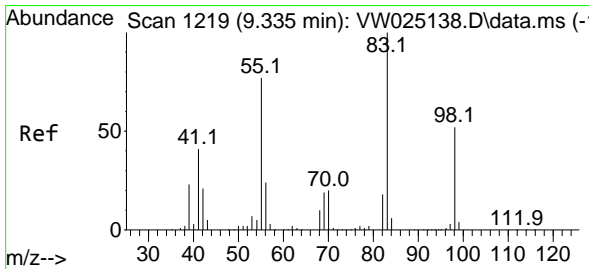
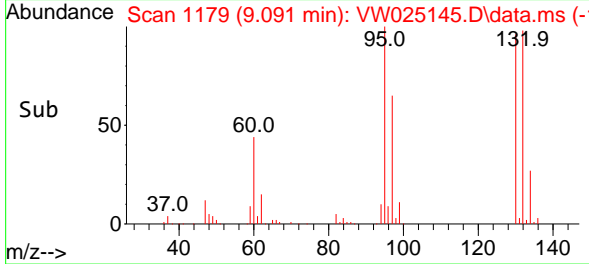
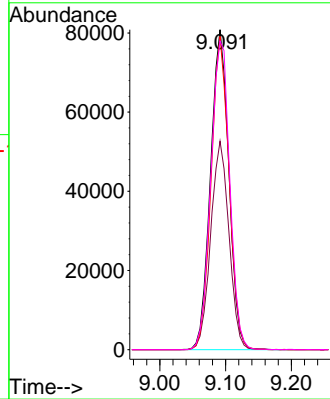


#34
 Trichloroethene
 Concen: 25.445 ug/L
 RT: 9.091 min Scan# 1179
 Delta R.T. 0.000 min
 Lab File: VW025145.D
 Acq: 13 Dec 2022 15:05

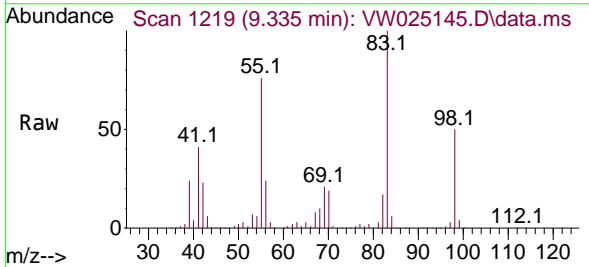
Instrument :
 MSVOA_W
 ClientSampleId :
 VSTD025511



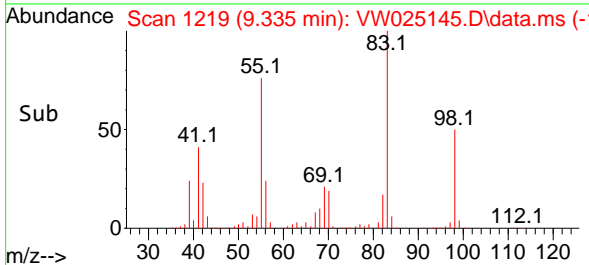
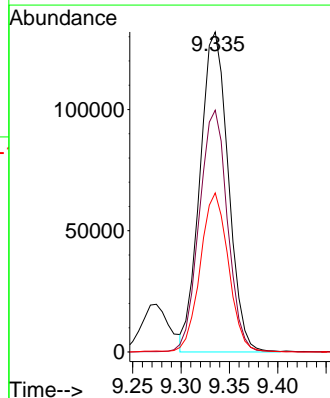
Tgt Ion: 95 Resp: 156573
 Ion Ratio Lower Upper
 95 100
 97 65.1 44.3 82.3
 132 97.9 63.0 117.0
 130 96.4 63.4 117.8

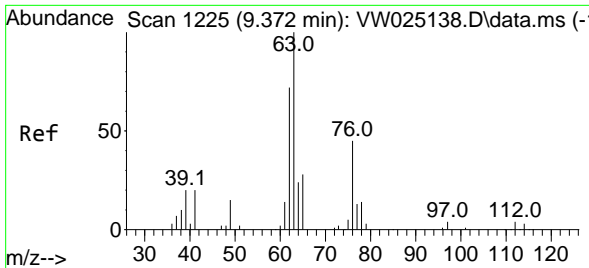


#35
 Methylcyclohexane
 Concen: 24.634 ug/L
 RT: 9.335 min Scan# 1219
 Delta R.T. 0.000 min
 Lab File: VW025145.D
 Acq: 13 Dec 2022 15:05



Tgt Ion: 83 Resp: 268867
 Ion Ratio Lower Upper
 83 100
 55 75.1 59.3 88.9
 98 49.2 38.6 57.8

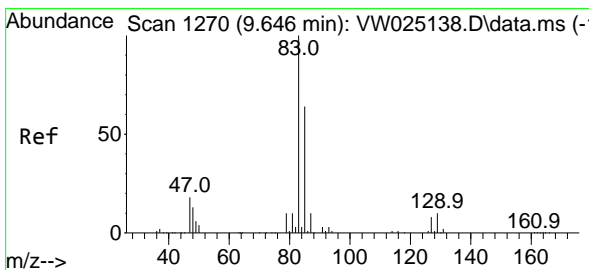
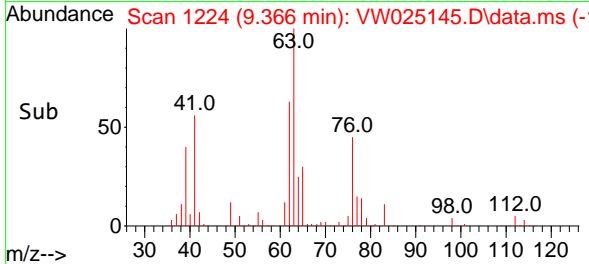
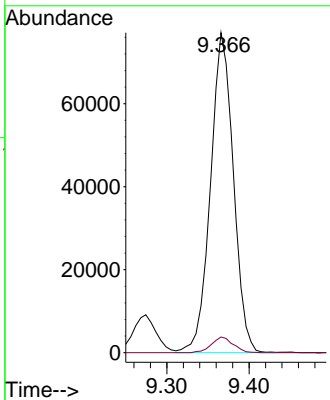
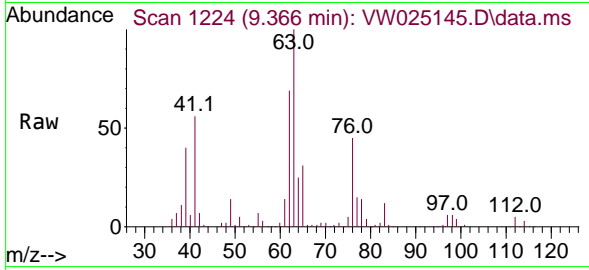




#37
 1,2-Dichloropropane
 Concen: 26.356 ug/L
 RT: 9.366 min Scan# 11
 Delta R.T. -0.006 min
 Lab File: VW025145.D
 Acq: 13 Dec 2022 15:05

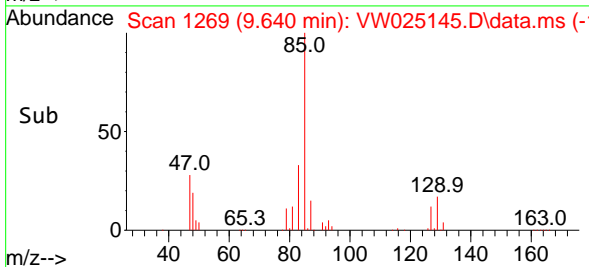
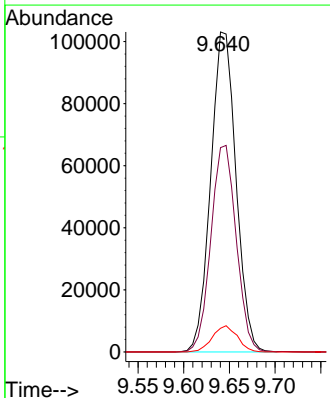
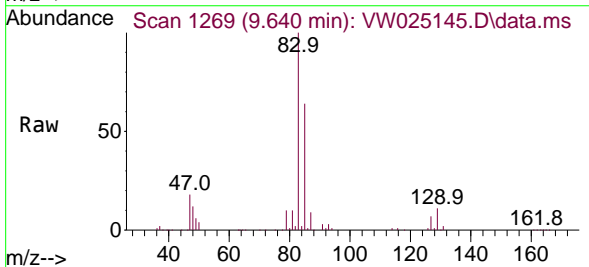
Instrument : MSVOA_W
 ClientSampleId : VSTD025511

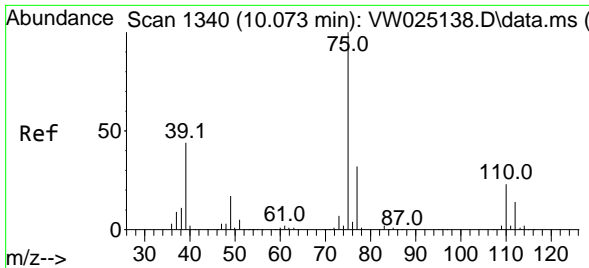
Tgt Ion: 63 Resp: 149331
 Ion Ratio Lower Upper
 63 100
 112 4.6 3.4 5.2



#38
 Bromodichloromethane
 Concen: 26.522 ug/L
 RT: 9.640 min Scan# 1269
 Delta R.T. -0.006 min
 Lab File: VW025145.D
 Acq: 13 Dec 2022 15:05

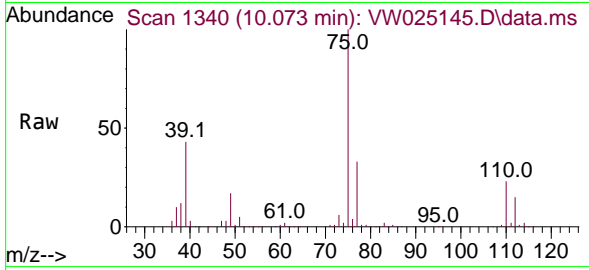
Tgt Ion: 83 Resp: 198520
 Ion Ratio Lower Upper
 83 100
 85 63.8 44.2 82.2
 127 7.4 6.6 10.0



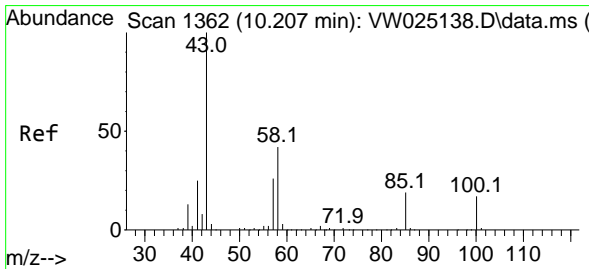
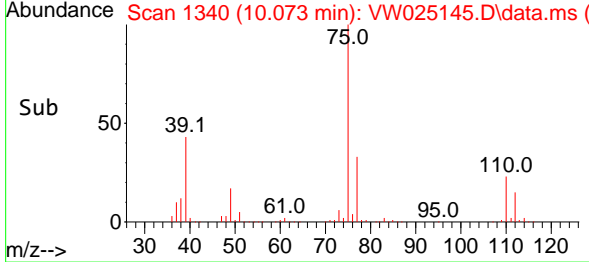
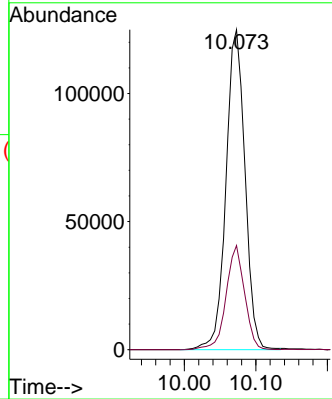


#39
 cis-1,3-Dichloropropene
 Concen: 26.672 ug/L
 RT: 10.073 min Scan# 1340
 Delta R.T. 0.000 min
 Lab File: VW025145.D
 Acq: 13 Dec 2022 15:05

Instrument : MSVOA_W
 ClientSampleId : VSTD025511

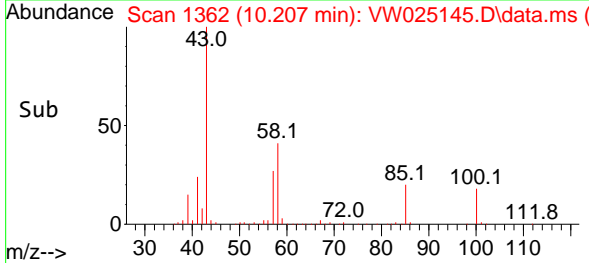
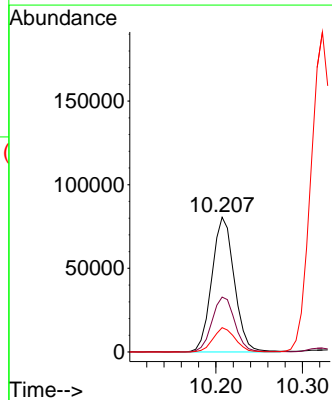
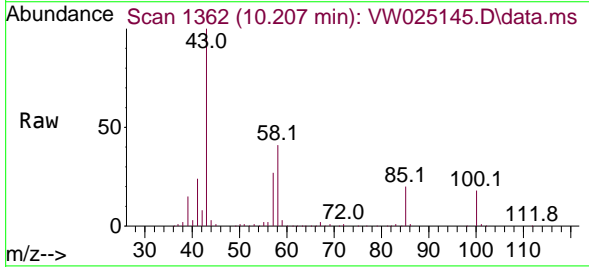


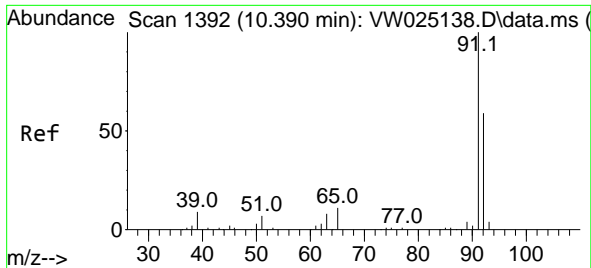
Tgt Ion: 75 Resp: 230902
 Ion Ratio Lower Upper
 75 100
 77 32.5 23.2 43.0



#40
 4-Methyl-2-pentanone
 Concen: 49.874 ug/L
 RT: 10.207 min Scan# 1362
 Delta R.T. 0.000 min
 Lab File: VW025145.D
 Acq: 13 Dec 2022 15:05

Tgt Ion: 43 Resp: 144858
 Ion Ratio Lower Upper
 43 100
 58 41.7 33.3 49.9
 100 17.8 13.8 20.6

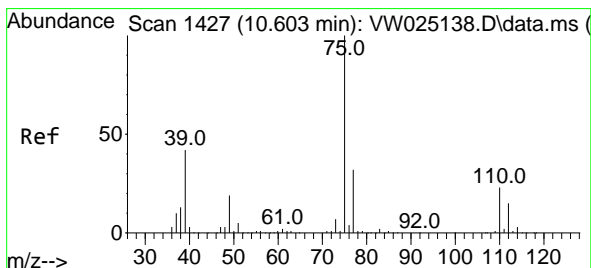
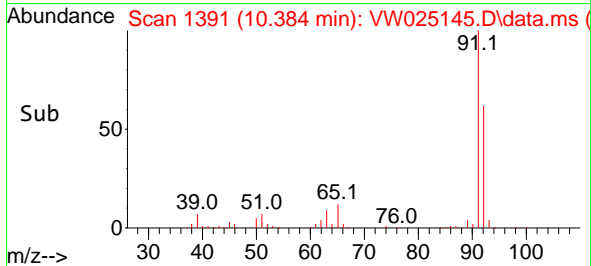
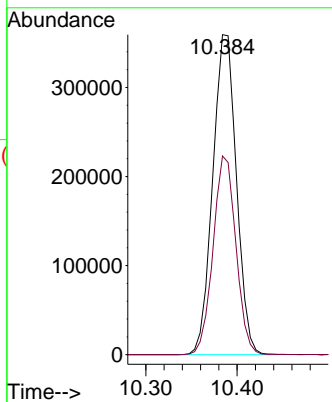
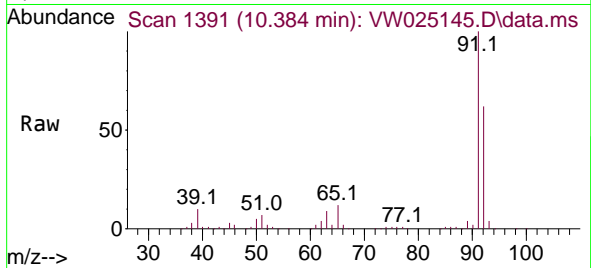




#42
 Toluene
 Concen: 26.269 ug/L
 RT: 10.384 min Scan# 1391
 Delta R.T. -0.006 min
 Lab File: VW025145.D
 Acq: 13 Dec 2022 15:05

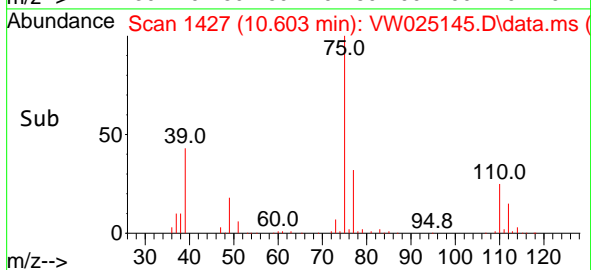
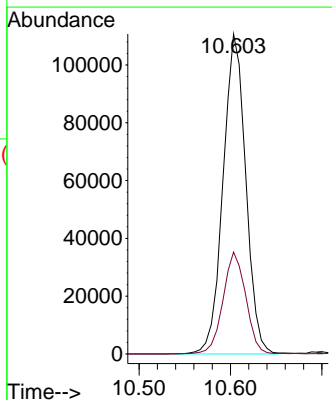
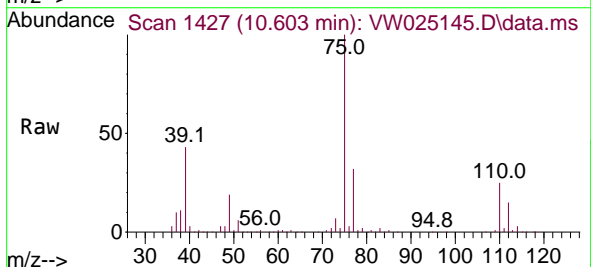
Instrument :
 MSVOA_W
 ClientSampleId :
 VSTD025511

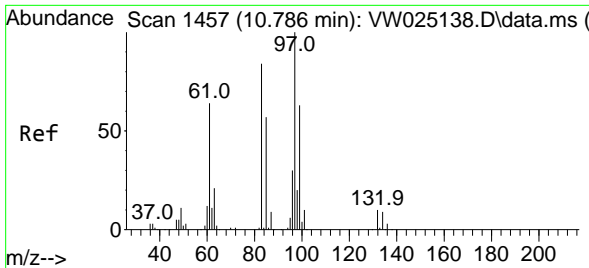
Tgt Ion: 91 Resp: 646558
 Ion Ratio Lower Upper
 91 100
 92 62.1 41.2 76.4



#44
 trans-1,3-Dichloropropene
 Concen: 25.817 ug/L
 RT: 10.603 min Scan# 1427
 Delta R.T. 0.000 min
 Lab File: VW025145.D
 Acq: 13 Dec 2022 15:05

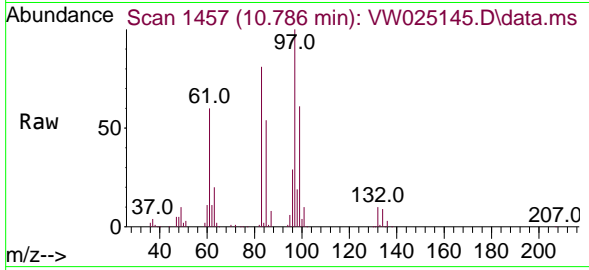
Tgt Ion: 75 Resp: 191412
 Ion Ratio Lower Upper
 75 100
 77 31.9 22.5 41.7





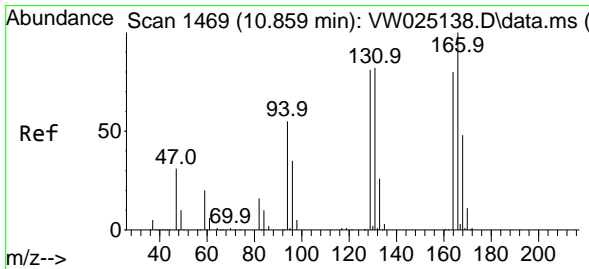
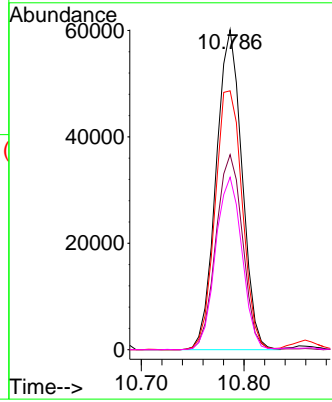
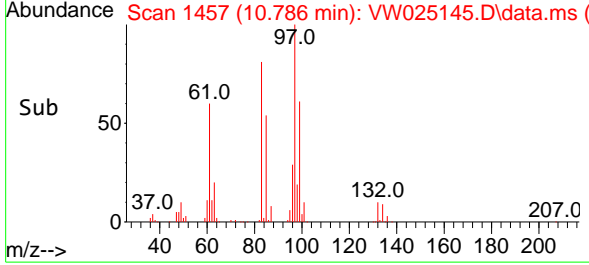
#45
 1,1,2-Trichloroethane
 Concen: 26.041 ug/L
 RT: 10.786 min Scan# 1457
 Delta R.T. 0.000 min
 Lab File: VW025145.D
 Acq: 13 Dec 2022 15:05

Instrument : MSVOA_W
 ClientSampleId : VSTD025511

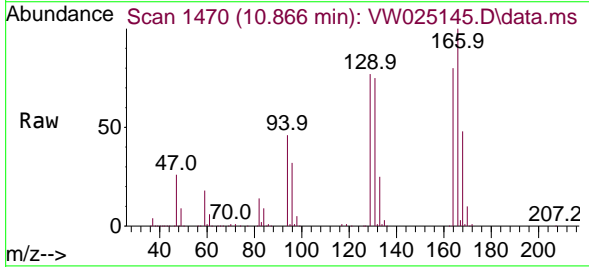


Tgt Ion: 97 Resp: 105294

Ion	Ratio	Lower	Upper
97	100		
99	61.0	44.3	82.3
83	80.9	61.3	113.9
85	53.9	40.5	75.1

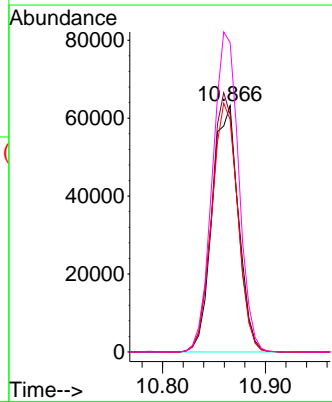
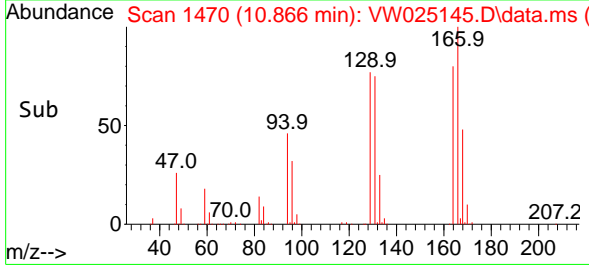


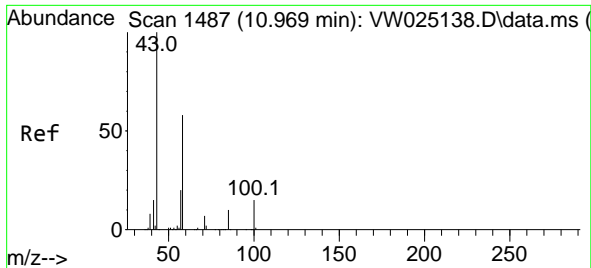
#46
 Tetrachloroethene
 Concen: 25.030 ug/L
 RT: 10.866 min Scan# 1470
 Delta R.T. 0.006 min
 Lab File: VW025145.D
 Acq: 13 Dec 2022 15:05



Tgt Ion: 164 Resp: 112118

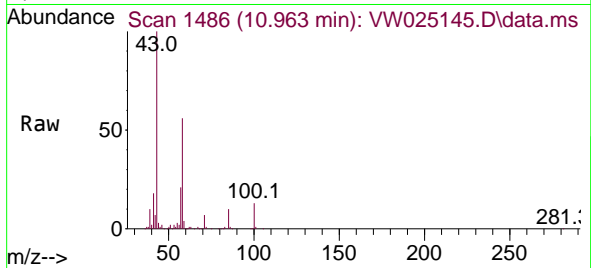
Ion	Ratio	Lower	Upper
164	100		
129	96.4	73.4	136.4
131	94.3	70.8	131.4
166	125.6	88.3	164.1





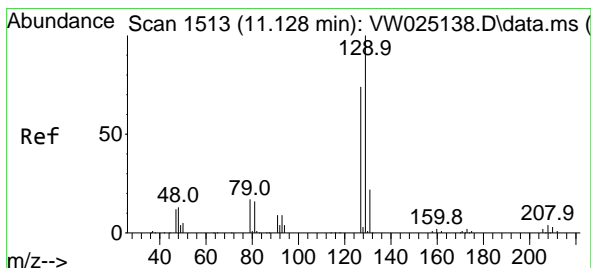
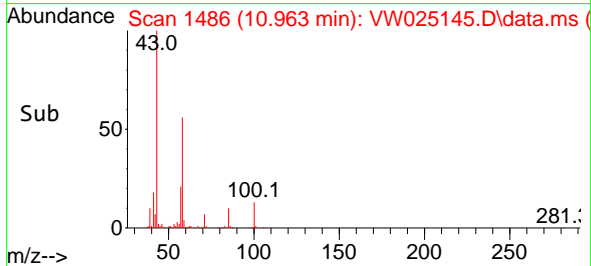
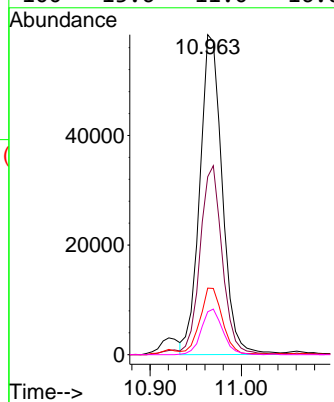
#48
 2-Hexanone
 Concen: 47.055 ug/L
 RT: 10.963 min Scan# 1487
 Delta R.T. -0.006 min
 Lab File: VW025145.D
 Acq: 13 Dec 2022 15:05

Instrument : MSVOA_W
 ClientSampleId : VSTD025511



Tgt Ion: 43 Resp: 99827

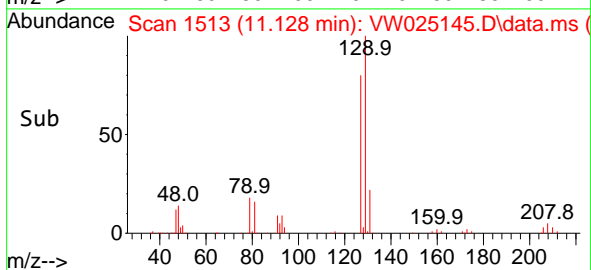
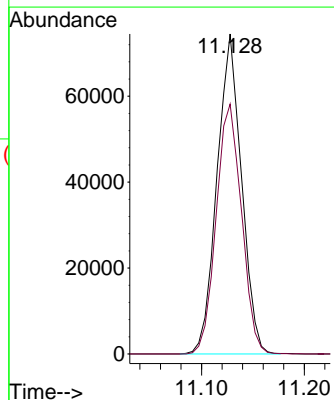
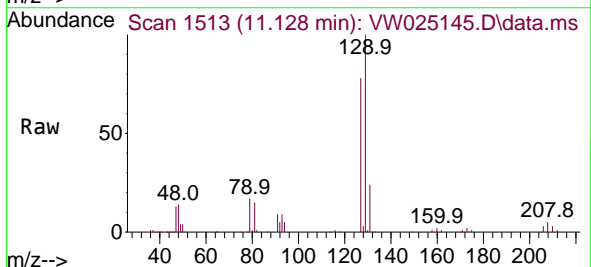
Ion	Ratio	Lower	Upper
43	100		
58	58.1	46.6	69.8
57	21.0	16.7	25.1
100	13.6	11.0	16.6

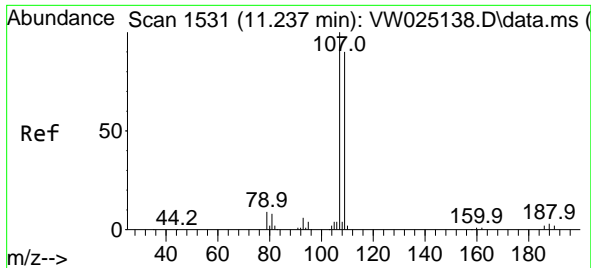


#49
 Dibromochloromethane
 Concen: 25.378 ug/L
 RT: 11.128 min Scan# 1513
 Delta R.T. 0.000 min
 Lab File: VW025145.D
 Acq: 13 Dec 2022 15:05

Tgt Ion: 129 Resp: 123232

Ion	Ratio	Lower	Upper
129	100		
127	78.1	49.7	92.3



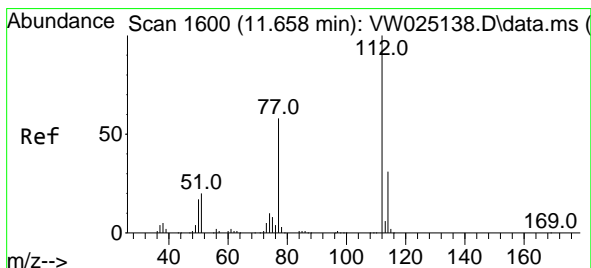
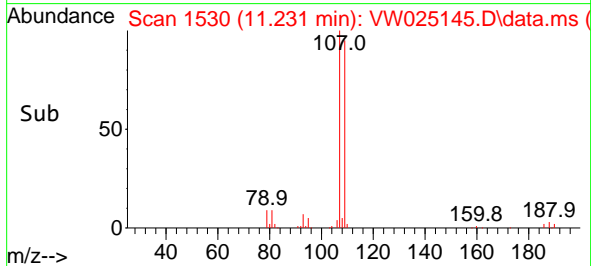
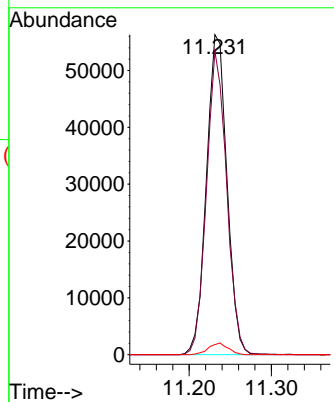
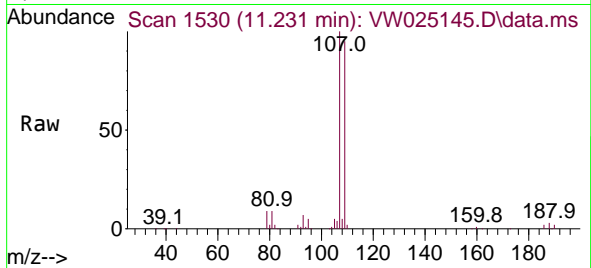


#50
 1,2-Dibromoethane
 Concen: 26.001 ug/L
 RT: 11.231 min Scan# 11
 Delta R.T. -0.006 min
 Lab File: VW025145.D
 Acq: 13 Dec 2022 15:05

Instrument :
 MSVOA_W
 ClientSampleId :
 VSTD025511

Tgt Ion:107 Resp: 97880

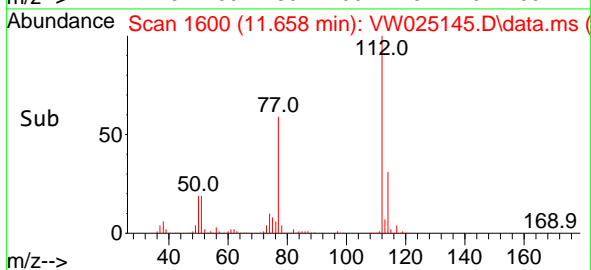
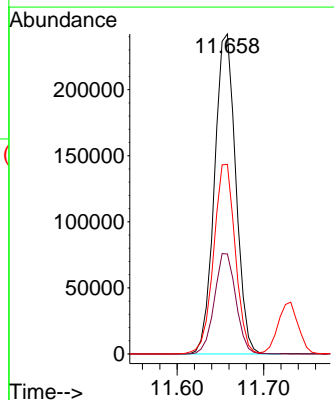
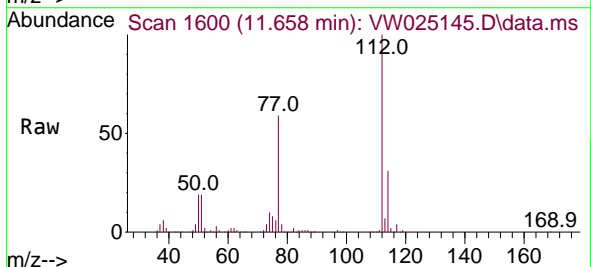
Ion	Ratio	Lower	Upper
107	100		
109	94.8	66.8	124.2
188	3.2	2.9	4.3

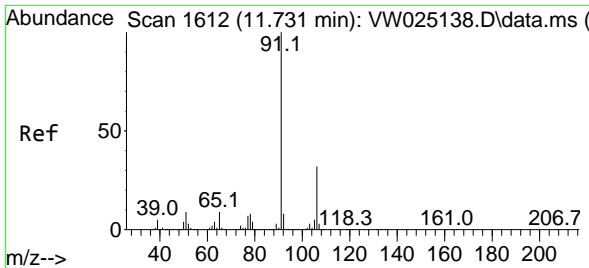


#51
 Chlorobenzene
 Concen: 26.232 ug/L
 RT: 11.658 min Scan# 1600
 Delta R.T. 0.000 min
 Lab File: VW025145.D
 Acq: 13 Dec 2022 15:05

Tgt Ion:112 Resp: 413188

Ion	Ratio	Lower	Upper
112	100		
114	31.3	23.2	43.2
77	59.2	47.2	70.8

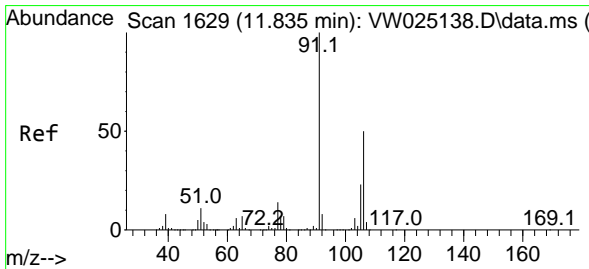
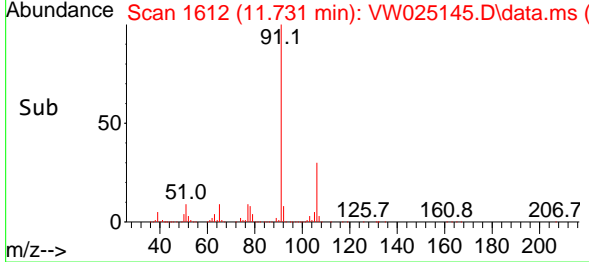
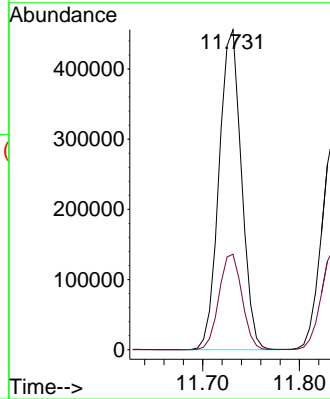
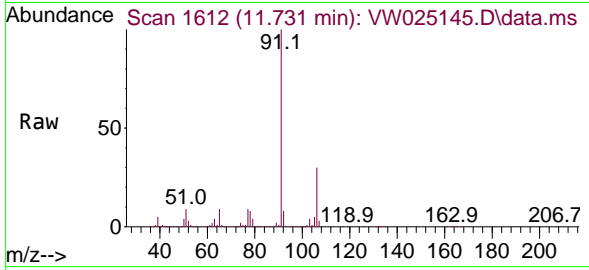




#52
 Ethylbenzene
 Concen: 26.262 ug/L
 RT: 11.731 min Scan# 1612
 Delta R.T. 0.000 min
 Lab File: VW025145.D
 Acq: 13 Dec 2022 15:05

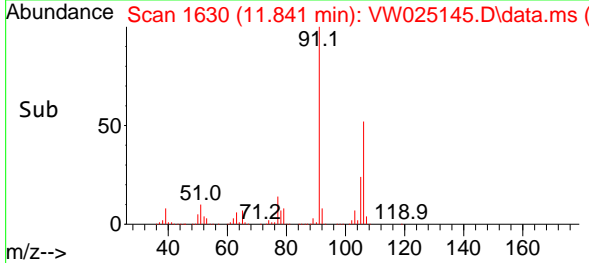
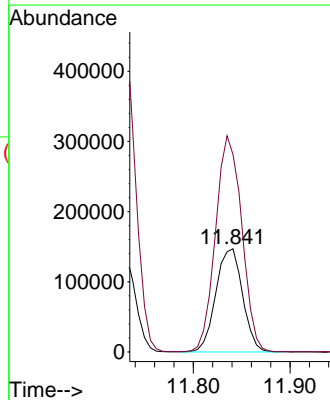
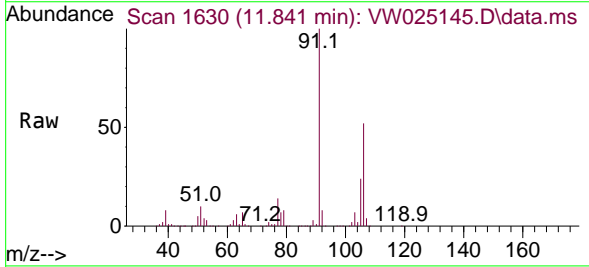
Instrument : MSVOA_W
 ClientSampleId : VSTD025511

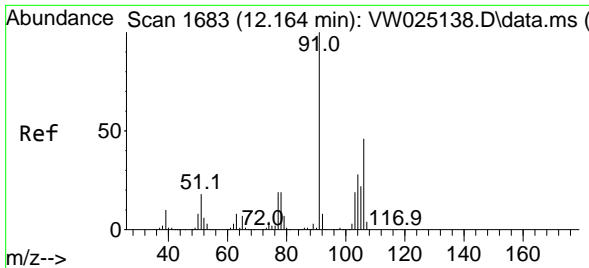
Tgt Ion: 91 Resp: 732498
 Ion Ratio Lower Upper
 91 100
 106 29.8 21.9 40.7



#53
 m,p-Xylene
 Concen: 26.500 ug/L
 RT: 11.841 min Scan# 1630
 Delta R.T. 0.006 min
 Lab File: VW025145.D
 Acq: 13 Dec 2022 15:05

Tgt Ion: 106 Resp: 282279
 Ion Ratio Lower Upper
 106 100
 91 191.3 139.7 259.4

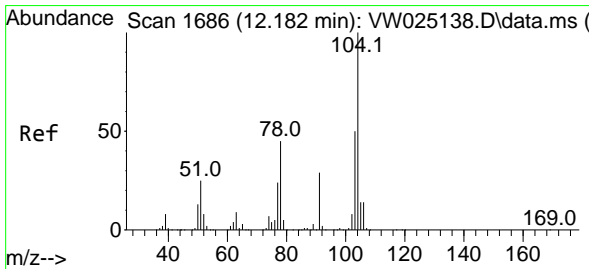
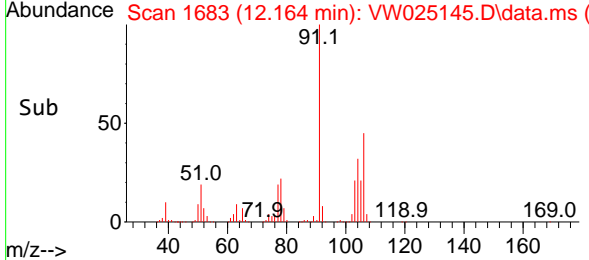
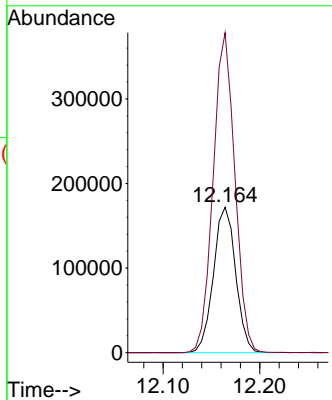
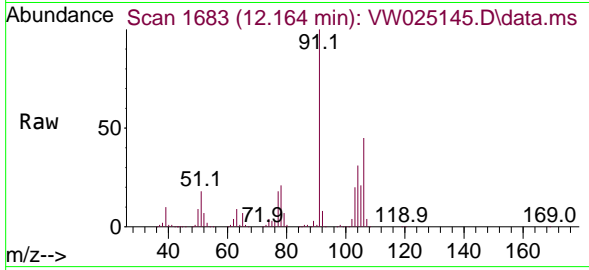




#54
 o-Xylene
 Concen: 27.042 ug/L
 RT: 12.164 min Scan# 1
 Delta R.T. 0.000 min
 Lab File: VW025145.D
 Acq: 13 Dec 2022 15:05

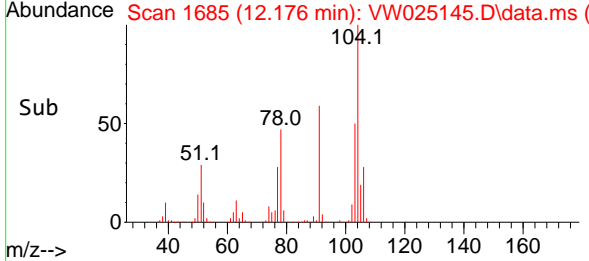
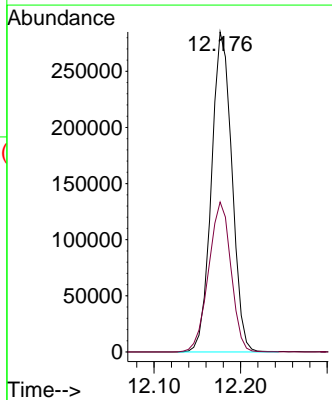
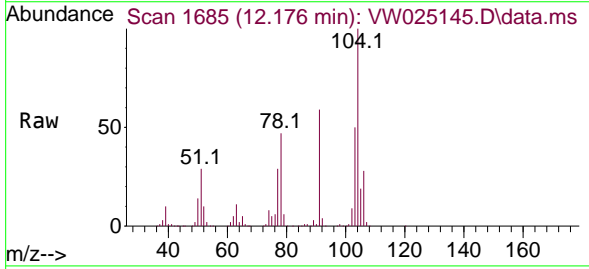
Instrument : MSVOA_W
 ClientSampleId : VSTD025511

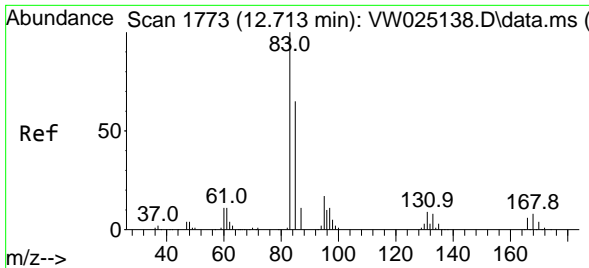
Tgt Ion:106 Resp: 274518
 Ion Ratio Lower Upper
 106 100
 91 219.9 148.8 276.4



#55
 Styrene
 Concen: 27.287 ug/L
 RT: 12.176 min Scan# 1685
 Delta R.T. -0.006 min
 Lab File: VW025145.D
 Acq: 13 Dec 2022 15:05

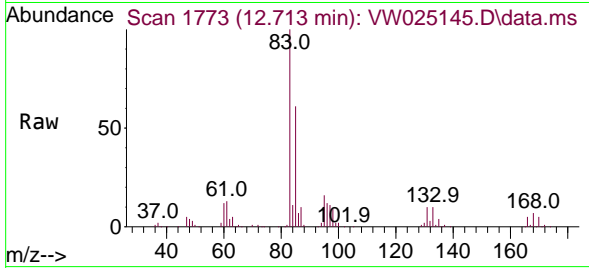
Tgt Ion:104 Resp: 469113
 Ion Ratio Lower Upper
 104 100
 78 46.8 34.4 63.8



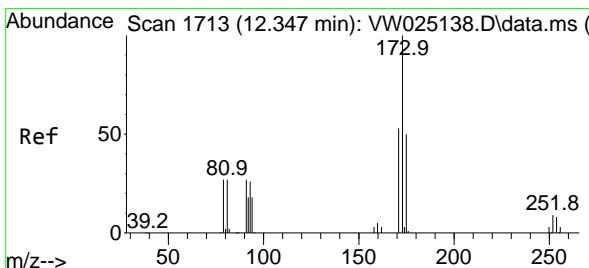
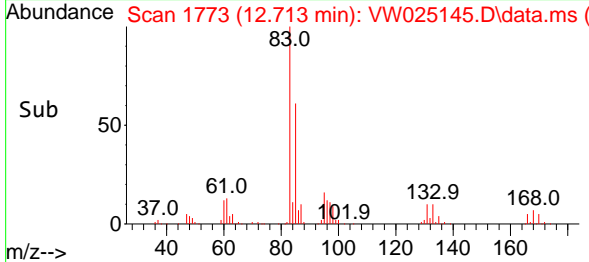
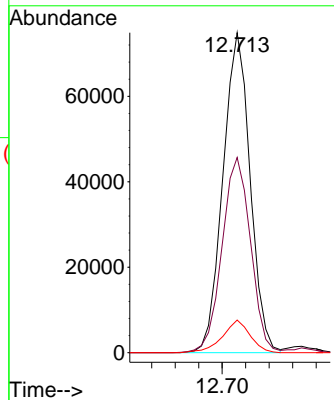


#57
 1,1,2,2-Tetrachloroethane
 Concen: 25.478 ug/L
 RT: 12.713 min Scan# 1773
 Delta R.T. 0.000 min
 Lab File: VW025145.D
 Acq: 13 Dec 2022 15:05

Instrument : MSVOA_W
 ClientSampleId : VSTD025511

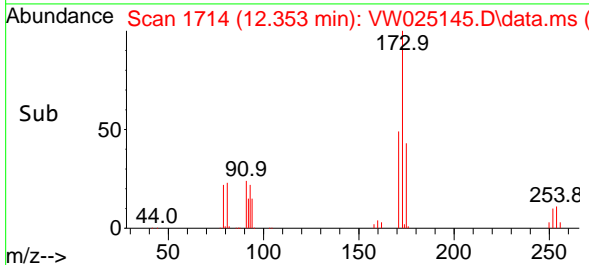
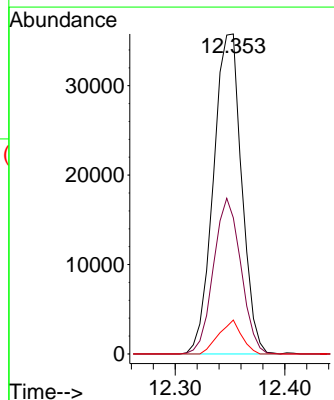
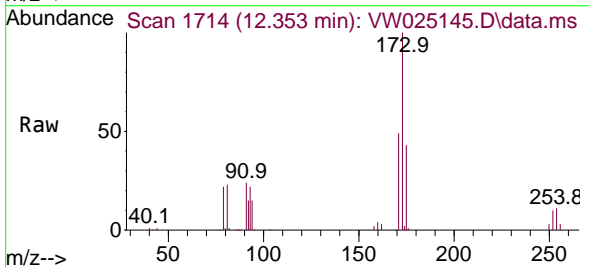


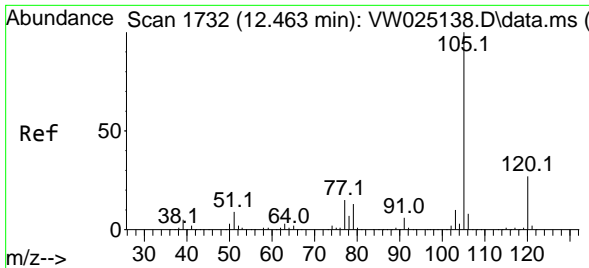
Tgt Ion: 83 Resp: 120475
 Ion Ratio Lower Upper
 83 100
 85 61.0 46.8 87.0
 131 10.2 8.2 12.2



#59
 Bromoform
 Concen: 24.260 ug/L
 RT: 12.353 min Scan# 1714
 Delta R.T. 0.006 min
 Lab File: VW025145.D
 Acq: 13 Dec 2022 15:05

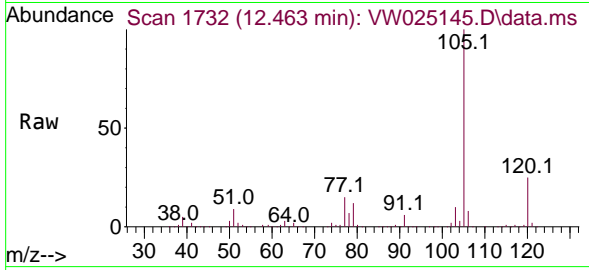
Tgt Ion: 173 Resp: 64057
 Ion Ratio Lower Upper
 173 100
 175 47.2 37.4 56.0
 254 8.6 6.8 10.2





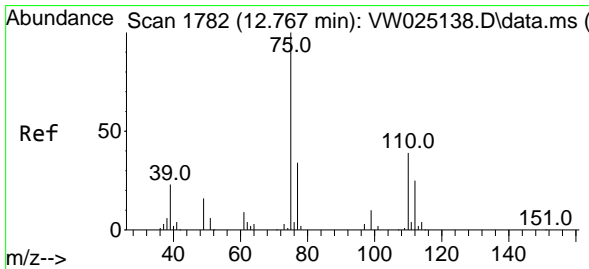
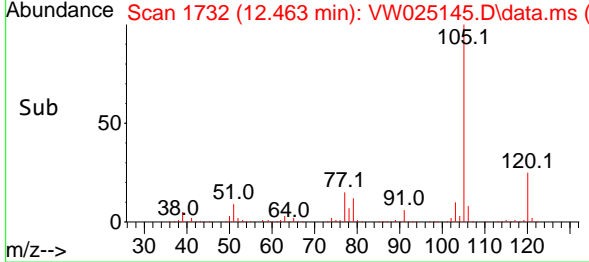
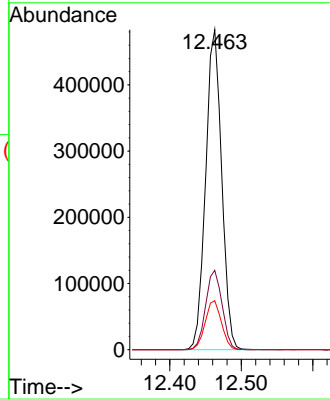
#60
 Isopropylbenzene
 Concen: 25.480 ug/L
 RT: 12.463 min Scan# 1732
 Delta R.T. 0.000 min
 Lab File: VW025145.D
 Acq: 13 Dec 2022 15:05

Instrument : MSVOA_W
 ClientSampleId : VSTD025511

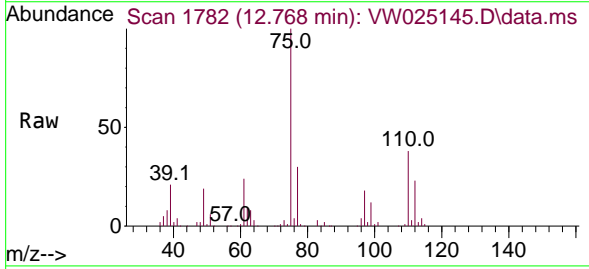


Tgt Ion:105 Resp: 750985

Ion	Ratio	Lower	Upper
105	100		
120	25.5	20.6	31.0
77	15.6	12.6	19.0

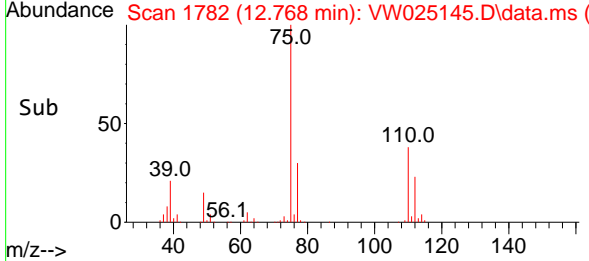
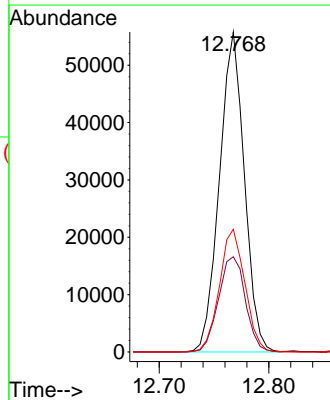


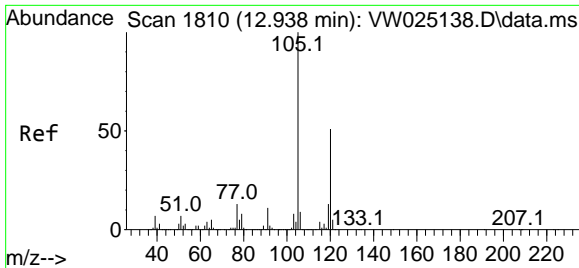
#61
 1,2,3-Trichloropropane
 Concen: 23.846 ug/L
 RT: 12.768 min Scan# 1782
 Delta R.T. 0.000 min
 Lab File: VW025145.D
 Acq: 13 Dec 2022 15:05



Tgt Ion: 75 Resp: 88130

Ion	Ratio	Lower	Upper
75	100		
77	32.1	26.6	40.0
110	39.2	31.7	47.5

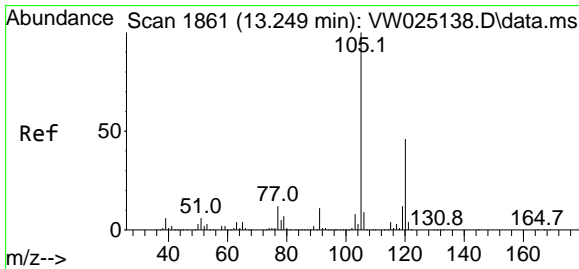
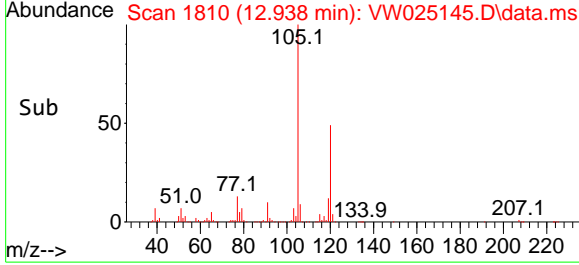
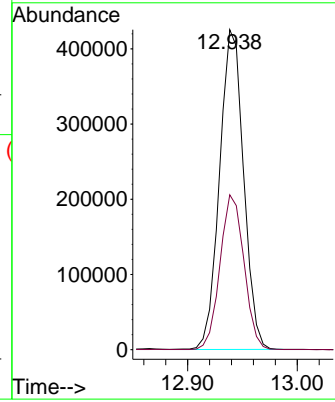
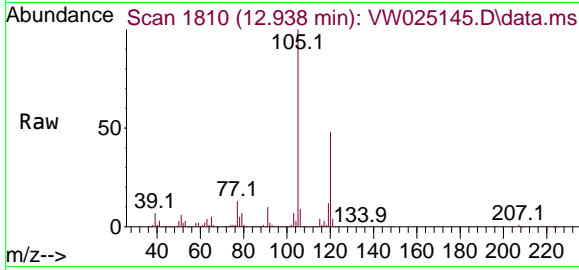




#62
 1,3,5-Trimethylbenzene
 Concen: 25.659 ug/L
 RT: 12.938 min Scan# 1810
 Delta R.T. 0.000 min
 Lab File: VW025145.D
 Acq: 13 Dec 2022 15:05

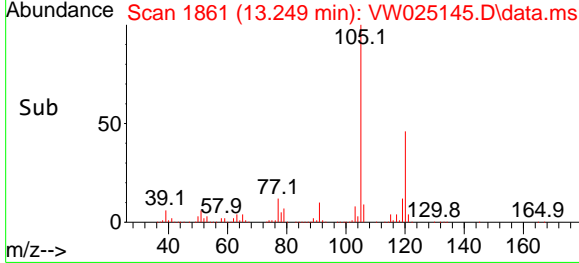
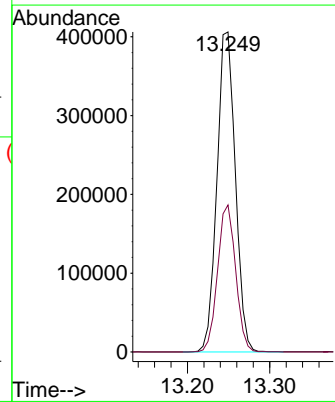
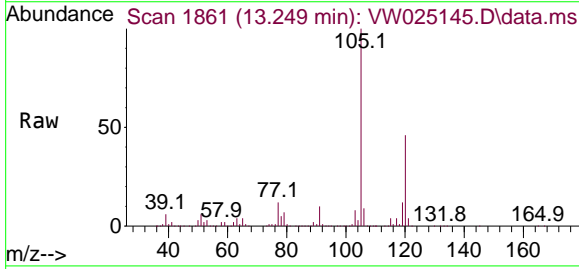
Instrument : MSVOA_W
 ClientSampleId : VSTD025511

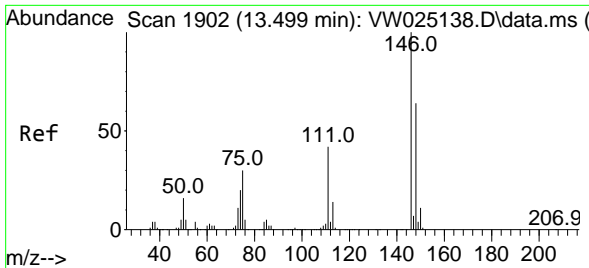
Tgt Ion:105 Resp: 647785
 Ion Ratio Lower Upper
 105 100
 120 48.3 38.0 57.0



#63
 1,2,4-Trimethylbenzene
 Concen: 25.800 ug/L
 RT: 13.249 min Scan# 1861
 Delta R.T. 0.000 min
 Lab File: VW025145.D
 Acq: 13 Dec 2022 15:05

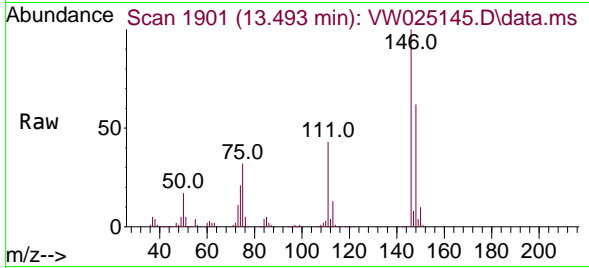
Tgt Ion:105 Resp: 632772
 Ion Ratio Lower Upper
 105 100
 120 45.1 36.1 54.1



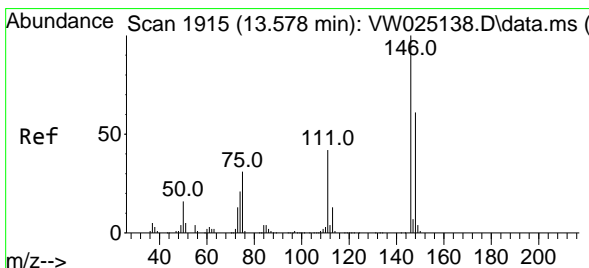
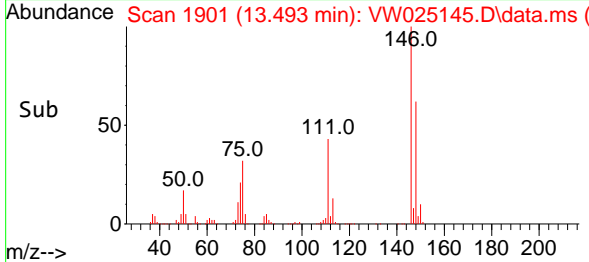
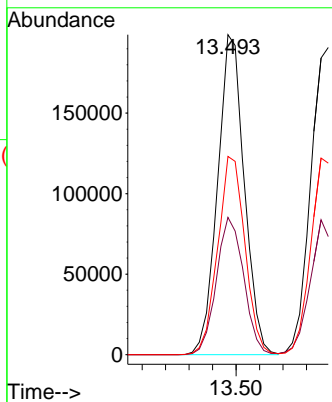


#64
 1,3-Dichlorobenzene
 Concen: 25.995 ug/L
 RT: 13.493 min Scan# 1901
 Delta R.T. -0.006 min
 Lab File: VW025145.D
 Acq: 13 Dec 2022 15:05

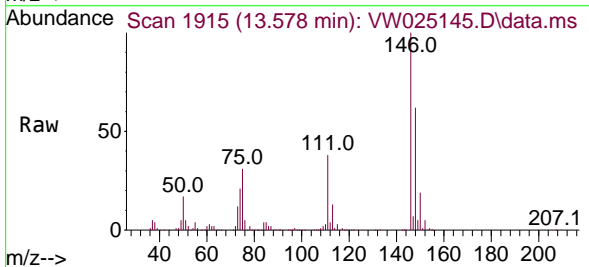
Instrument :
 MSVOA_W
 ClientSampleId :
 VSTD025511



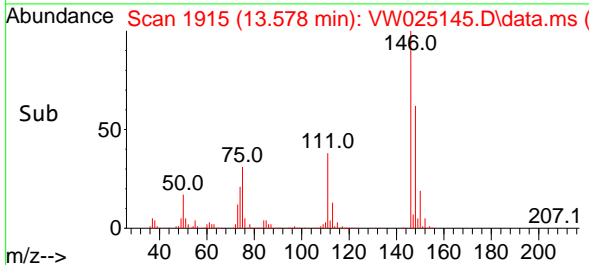
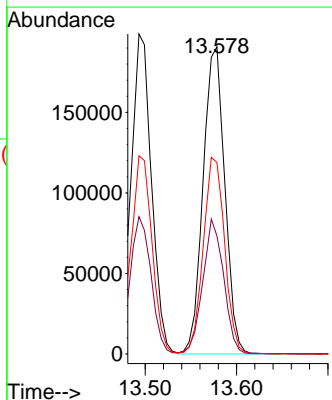
Tgt Ion:146 Resp: 313654
 Ion Ratio Lower Upper
 146 100
 111 42.9 30.2 56.0
 148 62.0 44.9 83.5

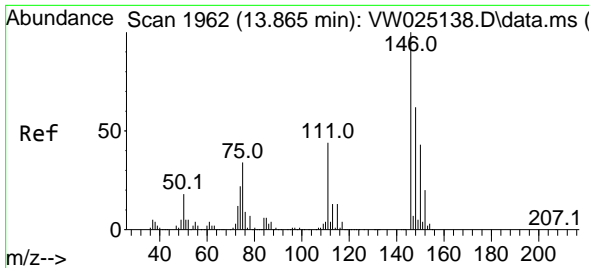


#65
 1,4-Dichlorobenzene
 Concen: 25.878 ug/L
 RT: 13.578 min Scan# 1915
 Delta R.T. 0.000 min
 Lab File: VW025145.D
 Acq: 13 Dec 2022 15:05



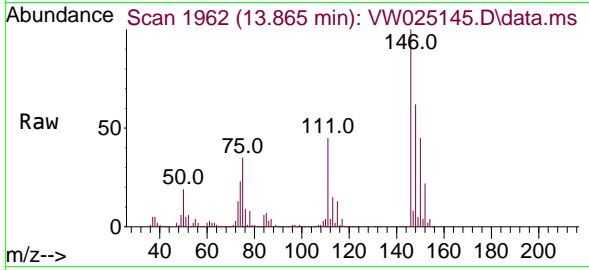
Tgt Ion:146 Resp: 314450
 Ion Ratio Lower Upper
 146 100
 111 38.4 27.4 51.0
 148 62.3 41.6 77.3





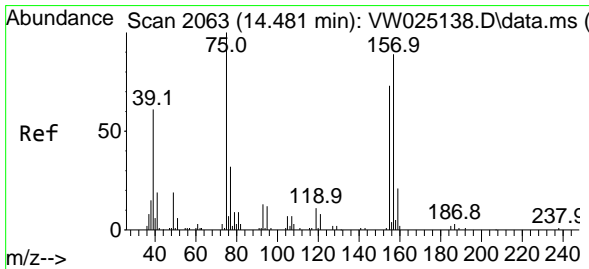
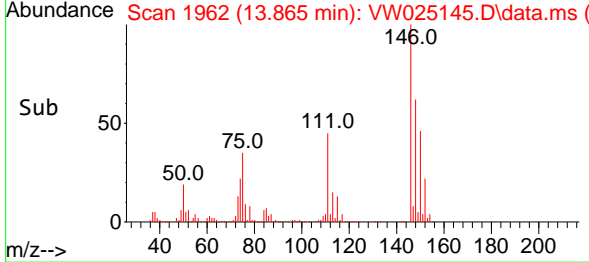
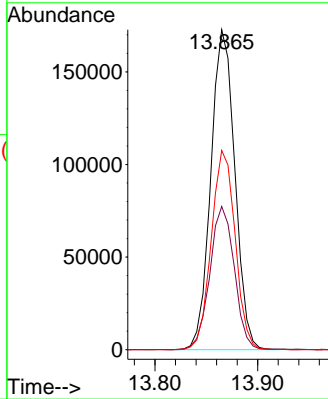
#67
 1,2-Dichlorobenzene
 Concen: 26.653 ug/L
 RT: 13.865 min Scan# 1962
 Delta R.T. 0.000 min
 Lab File: VW025145.D
 Acq: 13 Dec 2022 15:05

Instrument : MSVOA_W
 ClientSampleId : VSTD025511



Tgt Ion:146 Resp: 280465

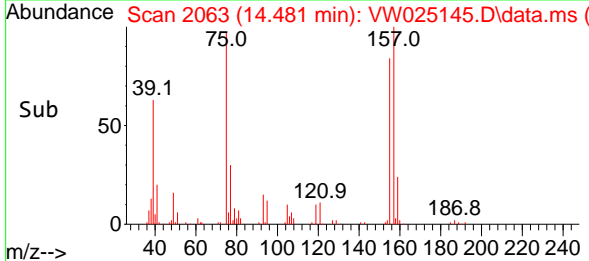
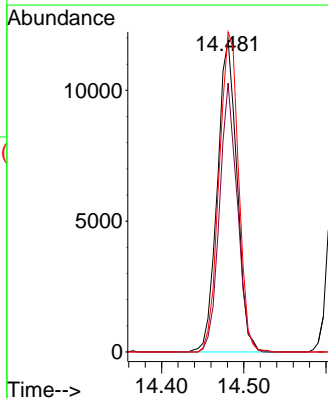
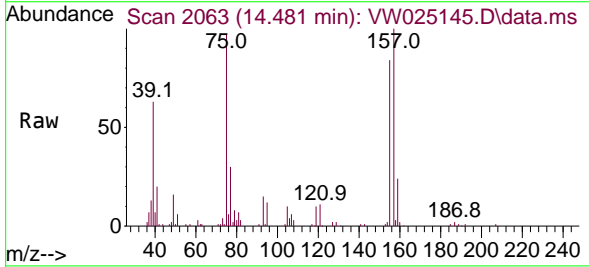
Ion	Ratio	Lower	Upper
146	100		
111	44.7	34.3	51.5
148	62.2	51.4	77.0

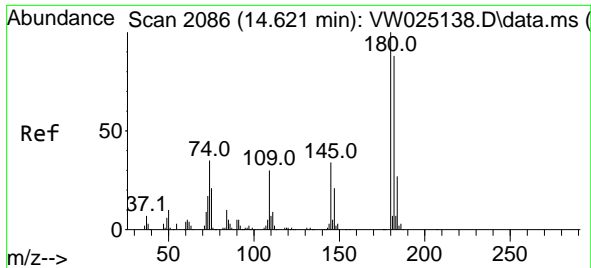


#68
 1,2-Dibromo-3-chloropropane
 Concen: 22.962 ug/L
 RT: 14.481 min Scan# 2063
 Delta R.T. 0.000 min
 Lab File: VW025145.D
 Acq: 13 Dec 2022 15:05

Tgt Ion: 75 Resp: 19786

Ion	Ratio	Lower	Upper
75	100		
155	86.2	60.3	90.5
157	102.6	84.9	127.3





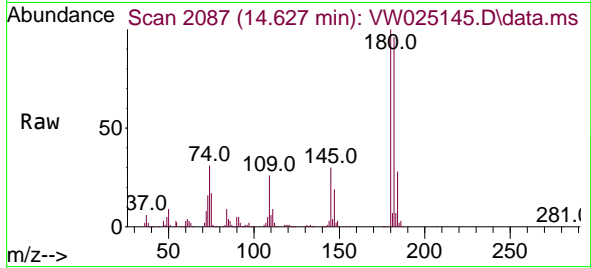
#69
 1,3,5-Trichlorobenzene
 Concen: 25.342 ug/L
 RT: 14.627 min Scan# 2086
 Delta R.T. 0.006 min
 Lab File: VW025145.D
 Acq: 13 Dec 2022 15:05

Instrument :

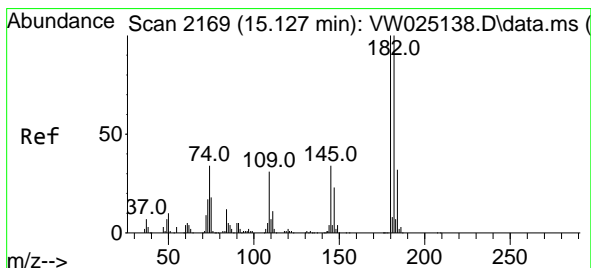
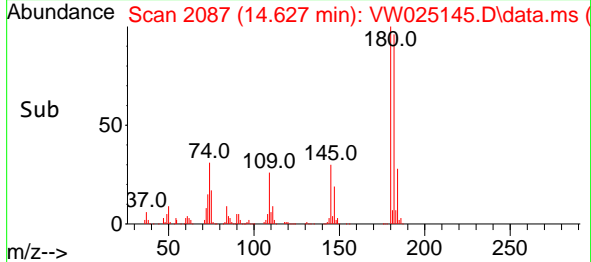
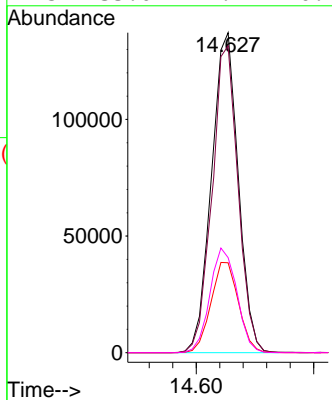
MSVOA_W

ClientSampleId :

VSTD025511

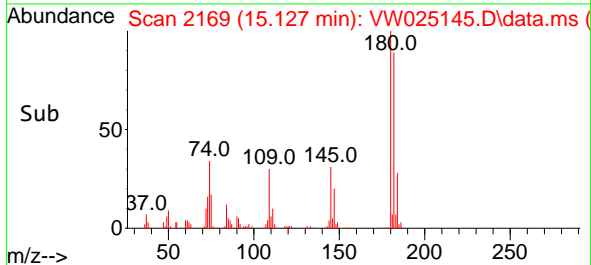
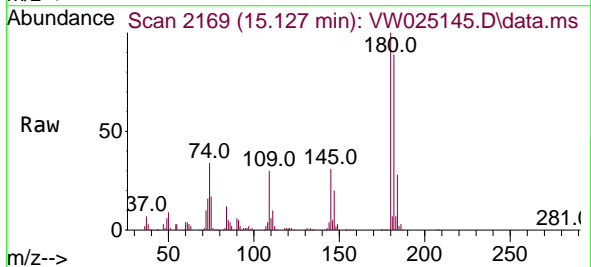
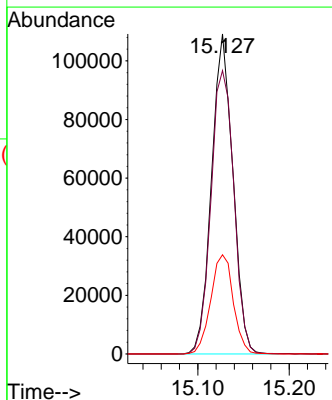


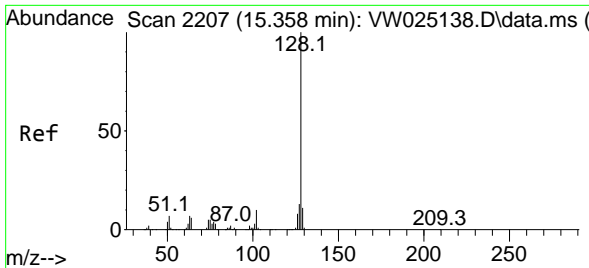
Tgt Ion:180 Resp: 217121
 Ion Ratio Lower Upper
 180 100
 182 93.3 77.8 116.6
 184 29.1 24.3 36.5
 145 33.0 27.1 40.7



#70
 1,2,4-trichlorobenzene
 Concen: 25.754 ug/L
 RT: 15.127 min Scan# 2169
 Delta R.T. 0.000 min
 Lab File: VW025145.D
 Acq: 13 Dec 2022 15:05

Tgt Ion:180 Resp: 177042
 Ion Ratio Lower Upper
 180 100
 182 95.1 77.2 115.8
 145 32.7 26.9 40.3

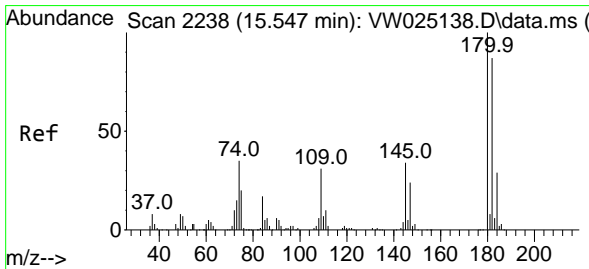
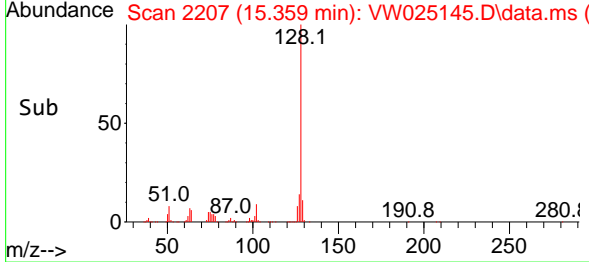
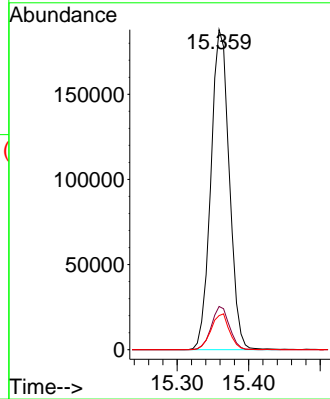
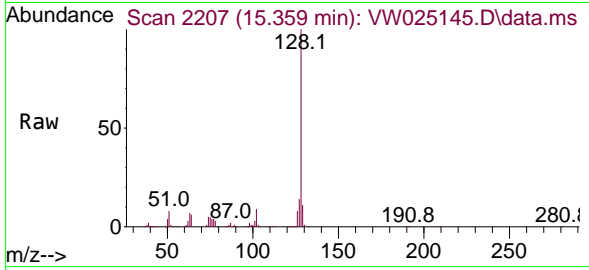




#71
 Naphthalene
 Concen: 24.948 ug/L
 RT: 15.359 min Scan# 21
 Delta R.T. 0.000 min
 Lab File: VW025145.D
 Acq: 13 Dec 2022 15:05

Instrument :
 MSVOA_W
 ClientSampleId :
 VSTD025511

Tgt Ion:128 Resp: 336210
 Ion Ratio Lower Upper
 128 100
 127 13.3 10.3 15.5
 129 11.2 8.8 13.2



#72
 1,2,3-Trichlorobenzene
 Concen: 24.993 ug/L
 RT: 15.548 min Scan# 2238
 Delta R.T. 0.000 min
 Lab File: VW025145.D
 Acq: 13 Dec 2022 15:05

Tgt Ion:180 Resp: 150570
 Ion Ratio Lower Upper
 180 100
 182 93.4 76.4 114.6
 145 36.4 29.6 44.4

