

Data Path : Z:\VOASRV\HPCHEM1\MSVOA W\DATA\VW121418\
 Data File : VW007441.D
 Acq On : 12 Dec 2018 14:34
 Operator : SY/AP
 Sample : J6238-08
 Misc : 5.00G/10ML/MSVOA W/SOIL
 ALS Vial : 1 Sample Multiplier: 1

Instrument :
 MSVOA_W
 ClientSampleId :
 VHBLK01

Integration Parameters: LSCINT.P

Integrator: RTE
 Smoothing : OFF
 Sampling : 1
 Start Thrs: 0.2
 Stop Thrs : 0

Filtering: 5
 Min Area: 0 % of largest Peak
 Max Peaks: 100
 Peak Location: TOP

If leading or trailing edge < 100 prefer < Baseline drop else tangent >
 Peak separation: 5

Method : Z:\VOASRV\HPCHEM1\MSVOA_W\METHOD\SOM2WLM120718S.M
 Title : VOC Analysis

Signal : TIC

peak #	R.T. min	first scan	max scan	last scan	PK TY	peak height	corr. area	corr. % max.	% of total
1	2.355	68	74	88	rBV	13433	32112	7.99%	1.048%
2	2.891	157	162	175	rVB	9586	26752	6.66%	0.873%
3	3.306	228	230	233	rVB	200	165	0.04%	0.005%
4	3.336	233	235	236	rBV	128	112	0.03%	0.004%
5	3.373	238	241	243	rBV2	444	476	0.12%	0.016%
6	3.605	277	279	283	rBV	100	173	0.04%	0.006%
7	3.745	299	302	303	rBV	123	141	0.04%	0.005%
8	3.842	313	318	319	rBV2	303	383	0.10%	0.013%
9	4.013	335	346	363	rBV	42677	142279	35.41%	4.645%
10	4.787	469	473	474	rBB	127	138	0.03%	0.005%
11	4.836	480	481	484	rBV	84	110	0.03%	0.004%
12	4.903	485	492	509	rVB4	2638	10179	2.53%	0.332%
13	5.062	514	518	520	rBB	165	178	0.04%	0.006%
14	5.373	567	569	571	rBV	96	113	0.03%	0.004%
15	5.732	625	628	630	rBV2	238	238	0.06%	0.008%
16	5.799	637	639	642	rBB	128	129	0.03%	0.004%
17	5.927	654	660	662	rBV2	1433	2378	0.59%	0.078%
18	6.299	718	721	722	rBB2	137	107	0.03%	0.003%
19	6.379	731	734	735	rBB2	129	120	0.03%	0.004%
20	6.446	742	745	748	rBV2	72	137	0.03%	0.004%
21	7.074	838	848	855	rBV	15690	42204	10.50%	1.378%
22	7.372	895	897	899	rBV	167	123	0.03%	0.004%
23	7.506	918	919	923	rBB	137	129	0.03%	0.004%
24	7.647	932	942	955	rBV	67818	166106	41.34%	5.423%
25	8.067	1007	1011	1013	rBB	157	151	0.04%	0.005%
26	8.275	1033	1045	1061	rBB2	133996	401835	100.00%	13.120%
27	8.842	1130	1138	1147	rBV	130614	249944	62.20%	8.160%
28	9.037	1167	1170	1174	rVB2	552	640	0.16%	0.021%
29	9.073	1175	1176	1180	rBB	332	270	0.07%	0.009%
30	9.274	1201	1209	1218	rVV	83540	168709	41.98%	5.508%
31	9.658	1269	1272	1276	rBV	311	489	0.12%	0.016%
32	9.689	1276	1277	1280	rVB	213	130	0.03%	0.004%
33	9.762	1284	1289	1294	rVB3	1697	3267	0.81%	0.107%
34	9.890	1304	1310	1319	rBV3	5208	10694	2.66%	0.349%

Data Path : Z:\VOASRV\HPCHEM1\MSVOA W\DATA\VW121418\
 Data File : VW007441.D
 Acq On : 12 Dec 2018 14:34
 Operator : SY/AP
 Sample : J6238-08
 Misc : 5.00G/10ML/MSVOA W/SOIL
 ALS Vial : 1 Sample Multiplier: 1

Instrument :
 MSVOA_W
 ClientSampleId :
 VHBLK01

Integration Parameters: LSCINT.P

Integrator: RTE
 Smoothing : OFF
 Sampling : 1
 Start Thrs: 0.2
 Stop Thrs : 0

Filtering: 5
 Min Area: 0 % of largest Peak
 Max Peaks: 100
 Peak Location: TOP

If leading or trailing edge < 100 prefer < Baseline drop else tangent >
 Peak separation: 5

Method : Z:\VOASRV\HPCHEM1\MSVOA_W\METHOD\SOM2WLM120718S.M
 Title : VOC Analysis

35	10.036	1327	1334	1342	rVB	52255	92224	22.95%	3.011%
36	10.110	1343	1346	1348	rBV	217	245	0.06%	0.008%
37	10.250	1358	1369	1374	rBV2	2783	5403	1.34%	0.176%
38	10.323	1374	1381	1389	rBV	192759	340488	84.73%	11.117%
39	10.579	1416	1423	1430	rBV	36481	61005	15.18%	1.992%
40	10.707	1435	1444	1451	rBV	15676	27411	6.82%	0.895%
41	10.768	1451	1454	1459	rVB2	649	870	0.22%	0.028%
42	10.847	1464	1467	1470	rBB	521	603	0.15%	0.020%
43	10.927	1473	1480	1489	rBV	63624	103918	25.86%	3.393%
44	11.067	1498	1503	1512	rBB	8799	13713	3.41%	0.448%
45	11.176	1517	1521	1525	rBB3	1270	1661	0.41%	0.054%
46	11.237	1529	1531	1534	rBB	120	113	0.03%	0.004%
47	11.323	1542	1545	1548	rBB	210	152	0.04%	0.005%
48	11.445	1553	1565	1571	rBB	12500	21219	5.28%	0.693%
49	11.512	1571	1576	1577	rBV	161	131	0.03%	0.004%
50	11.634	1589	1596	1604	rBV	179172	300967	74.90%	9.826%
51	11.914	1639	1642	1644	rBV	141	170	0.04%	0.006%
52	11.932	1644	1645	1648	rBV	230	208	0.05%	0.007%
53	11.999	1655	1656	1658	rBV	189	152	0.04%	0.005%
54	12.170	1682	1684	1691	rVB	294	538	0.13%	0.018%
55	12.463	1731	1732	1733	rVV	439	266	0.07%	0.009%
56	12.548	1743	1746	1748	rBB	119	124	0.03%	0.004%
57	12.615	1751	1757	1764	rBB	20640	32637	8.12%	1.066%
58	12.695	1764	1770	1778	rBV	86203	141288	35.16%	4.613%
59	12.938	1805	1810	1814	rBV	2054	2612	0.65%	0.085%
60	13.048	1823	1828	1830	rBB	272	285	0.07%	0.009%
61	13.085	1831	1834	1837	rBB	191	186	0.05%	0.006%
62	13.201	1849	1853	1856	rBB2	314	425	0.11%	0.014%
63	13.249	1860	1861	1864	rBB2	153	128	0.03%	0.004%
64	13.304	1865	1870	1874	rBB2	2301	3168	0.79%	0.103%
65	13.414	1883	1888	1892	rBB2	719	1131	0.28%	0.037%
66	13.511	1902	1904	1906	rBV	639	617	0.15%	0.020%
67	13.560	1906	1912	1919	rBV	194675	307916	76.63%	10.053%
68	13.646	1924	1926	1930	rVB3	590	645	0.16%	0.021%
69	13.749	1938	1943	1944	rBV3	157	178	0.04%	0.006%
70	13.761	1944	1945	1952	rBV3	816	1174	0.29%	0.038%
71	13.859	1954	1961	1968	rBV	183822	305584	76.05%	9.977%

Data Path : Z:\VOASRV\HPCHEM1\MSVOA W\DATA\VW121418\
 Data File : VW007441.D
 Acq On : 12 Dec 2018 14:34
 Operator : SY/AP
 Sample : J6238-08
 Misc : 5.00G/10ML/MSVOA W/SOIL
 ALS Vial : 1 Sample Multiplier: 1

Instrument :
 MSVOA_W
 ClientSampleId :
 VHBLK01

Integration Parameters: LSCINT.P

Integrator: RTE
 Smoothing : OFF Filtering: 5
 Sampling : 1 Min Area: 0 % of largest Peak
 Start Thrs: 0.2 Max Peaks: 100
 Stop Thrs : 0 Peak Location: TOP

If leading or trailing edge < 100 prefer < Baseline drop else tangent >
 Peak separation: 5

Method : Z:\VOASRV\HPCHEM1\MSVOA_W\METHOD\SOM2WLM120718S.M
 Title : VOC Analysis

72	14.078	1991	1997	2003	rBV2	9981	16546	4.12%	0.540%
73	14.206	2015	2018	2021	rBV2	220	312	0.08%	0.010%
74	14.334	2032	2039	2043	rBV3	1431	2477	0.62%	0.081%
75	14.420	2052	2053	2056	rBV	115	109	0.03%	0.004%
76	14.530	2067	2071	2074	rBV2	544	676	0.17%	0.022%
77	14.639	2085	2089	2092	rBB2	265	281	0.07%	0.009%
78	14.725	2100	2103	2104	rBV2	253	195	0.05%	0.006%
79	14.767	2109	2110	2115	rBB	176	192	0.05%	0.006%
80	14.804	2115	2116	2119	rBV	193	169	0.04%	0.006%
81	14.840	2119	2122	2124	rVB	142	176	0.04%	0.006%
82	14.877	2127	2128	2131	rBV	106	131	0.03%	0.004%
83	14.962	2139	2142	2144	rBV	112	173	0.04%	0.006%
84	15.036	2151	2154	2155	rBV	166	172	0.04%	0.006%
85	15.109	2163	2166	2167	rBB	244	243	0.06%	0.008%
86	15.139	2167	2171	2174	rBV2	453	564	0.14%	0.018%
87	15.188	2177	2179	2181	rVB	181	138	0.03%	0.005%
88	15.292	2193	2196	2198	rBV	306	293	0.07%	0.010%
89	15.383	2206	2211	2217	rVB3	348	692	0.17%	0.023%
90	15.444	2218	2221	2226	rVV3	1165	1908	0.47%	0.062%
91	15.505	2227	2231	2238	rVB	3059	5148	1.28%	0.168%
92	15.609	2246	2248	2249	rBV	190	153	0.04%	0.005%
93	16.017	2314	2315	2318	rVB	232	211	0.05%	0.007%
94	16.054	2318	2321	2322	rBV	118	115	0.03%	0.004%
95	16.066	2322	2323	2325	rBV2	197	165	0.04%	0.005%
96	16.237	2348	2351	2352	rBV	199	208	0.05%	0.007%
97	16.310	2362	2363	2364	rBV	170	106	0.03%	0.003%
98	16.541	2398	2401	2403	rBV2	227	305	0.08%	0.010%
99	16.718	2427	2430	2432	rBV	202	248	0.06%	0.008%
100	16.736	2432	2433	2434	rBV	213	108	0.03%	0.004%

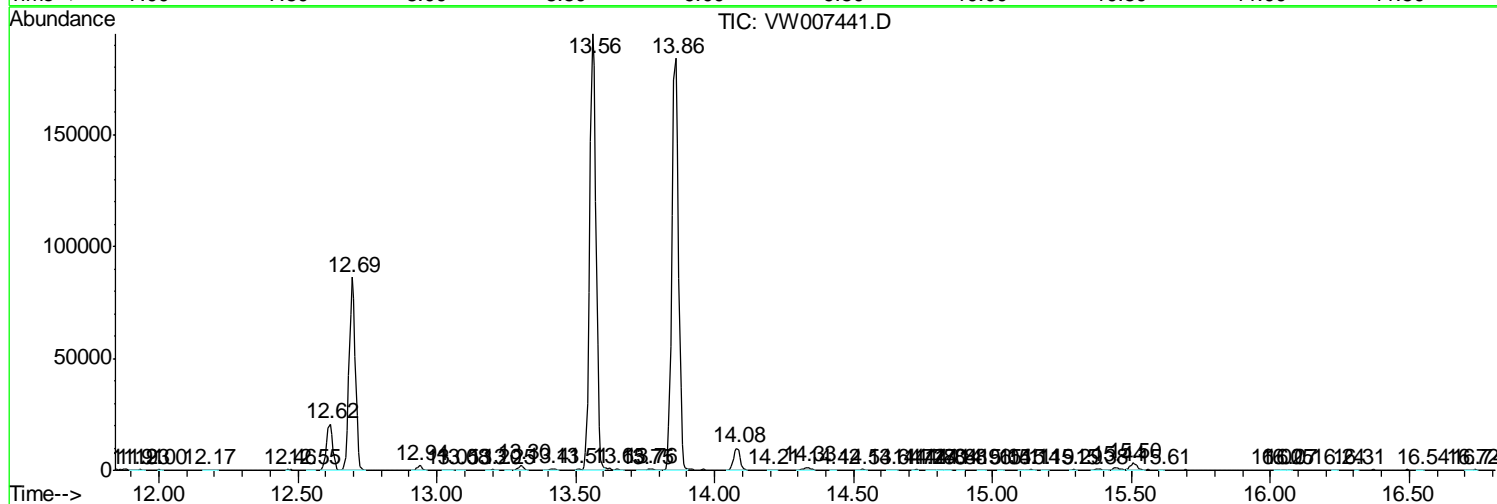
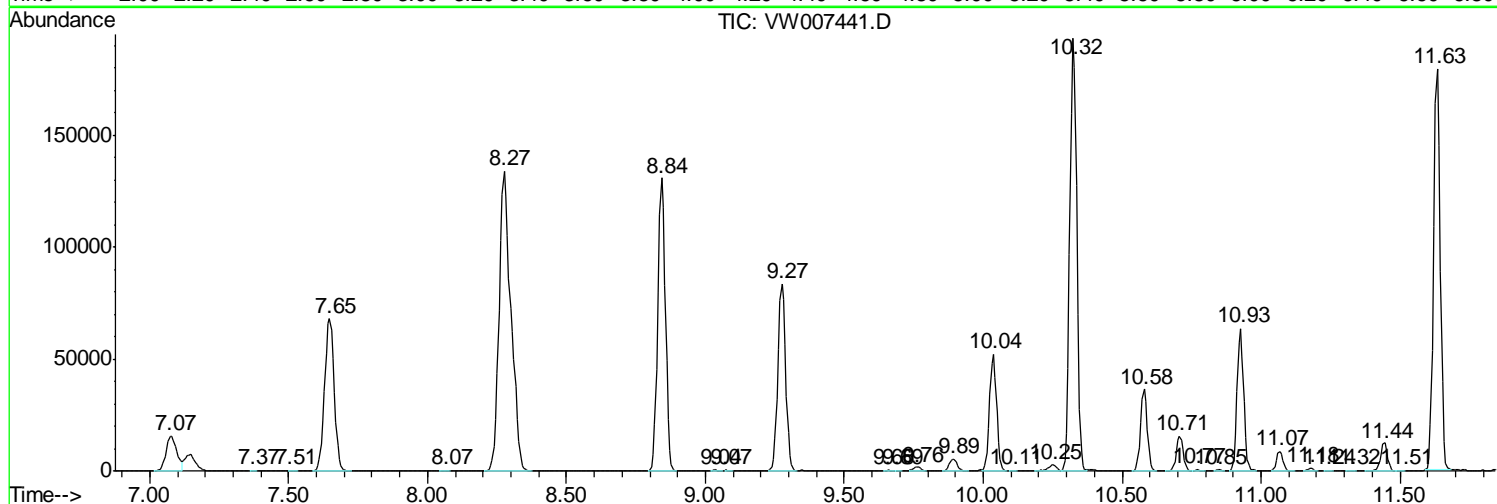
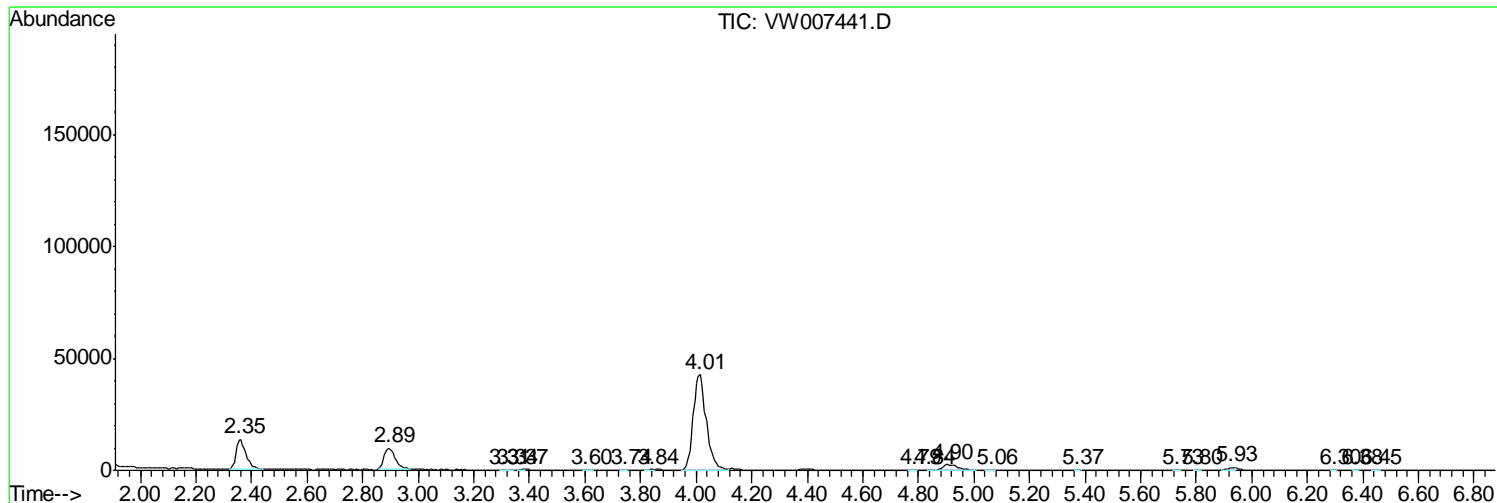
Sum of corrected areas: 3062880

Data Path : Z:\VOASRV\HPCHEM1\MSVOA W\DATA\VW121418\
 Data File : VW007441.D
 Acq On : 12 Dec 2018 14:34
 Operator : SY/AP
 Sample : J6238-08
 Misc : 5.00G/10ML/MSVOA W/SOIL
 ALS Vial : 1 Sample Multiplier: 1

Instrument :
 MSVOA_W
ClientSampled :
 VHBLK01

Quant Method : Z:\VOASRV\HPCHEM1\MSVOA_W\METHOD\SOM2WLM120718S.M
 Quant Title : VOC Analysis

TIC Library : C:\DATABASE\NIST11.L
 TIC Integration Parameters: LSCINT.P



Data Path : Z:\VOASRV\HPCHEM1\MSVOA_W\DATA\VW121418\
Data File : VW007441.D
Acq On : 12 Dec 2018 14:34
Operator : SY/AP
Sample : J6238-08
Misc : 5.00G/10ML/MSVOA_W/SOIL
ALS Vial : 1 Sample Multiplier: 1

Instrument :
MSVOA_W
ClientSampleId :
VHBLK01

Quant Method : Z:\VOASRV\HPCHEM1\MSVOA_W\METHOD\SOM2WLM120718S.M
Quant Title : VOC Analysis

TIC Library : C:\DATABASE\NIST11.L
TIC Integration Parameters: LSCINT.P

No Library Search Compounds Detected

Data Path : Z:\VOASRV\HPCHEM1\MSVOA_W\DATA\VW121418\
Data File : VW007441.D
Acq On : 12 Dec 2018 14:34
Operator : SY/AP
Sample : J6238-08
Misc : 5.00G/10ML/MSVOA_W/SOIL
ALS Vial : 1 Sample Multiplier: 1

Instrument :
MSVOA_W
ClientSampleId :
VHBLK01

Quant Method : Z:\VOASRV\HPCHEM1\MSVOA_W\METHOD\SOM2WLM120718S.M
Quant Title : VOC Analysis

TIC Library : C:\DATABASE\NIST11.L
TIC Integration Parameters: LSCINT.P

TIC Top Hit name	RT	EstConc	Units	Response	--Internal Standard--			
					#	RT	Resp	Conc
