

Data Path : Z:\voasrv\HPCHEM1\MSVOA_W\Data\VW121523\
 Data File : VW027647.D
 Acq On : 15 Dec 2023 20:21
 Operator : SY/MD
 Sample : 05834-04
 Misc : 4.95g/10mL/MSVOA_W/SOIL
 ALS Vial : 19 Sample Multiplier: 1

Quant Time: Dec 16 01:40:17 2023
 Quant Method : Z:\voasrv\HPCHEM1\MSVOA_W\Method\SFAMWLM121523SMA.M
 Quant Title : SFAM01.0
 QLast Update : Sat Dec 16 00:05:51 2023
 Response via : Initial Calibration

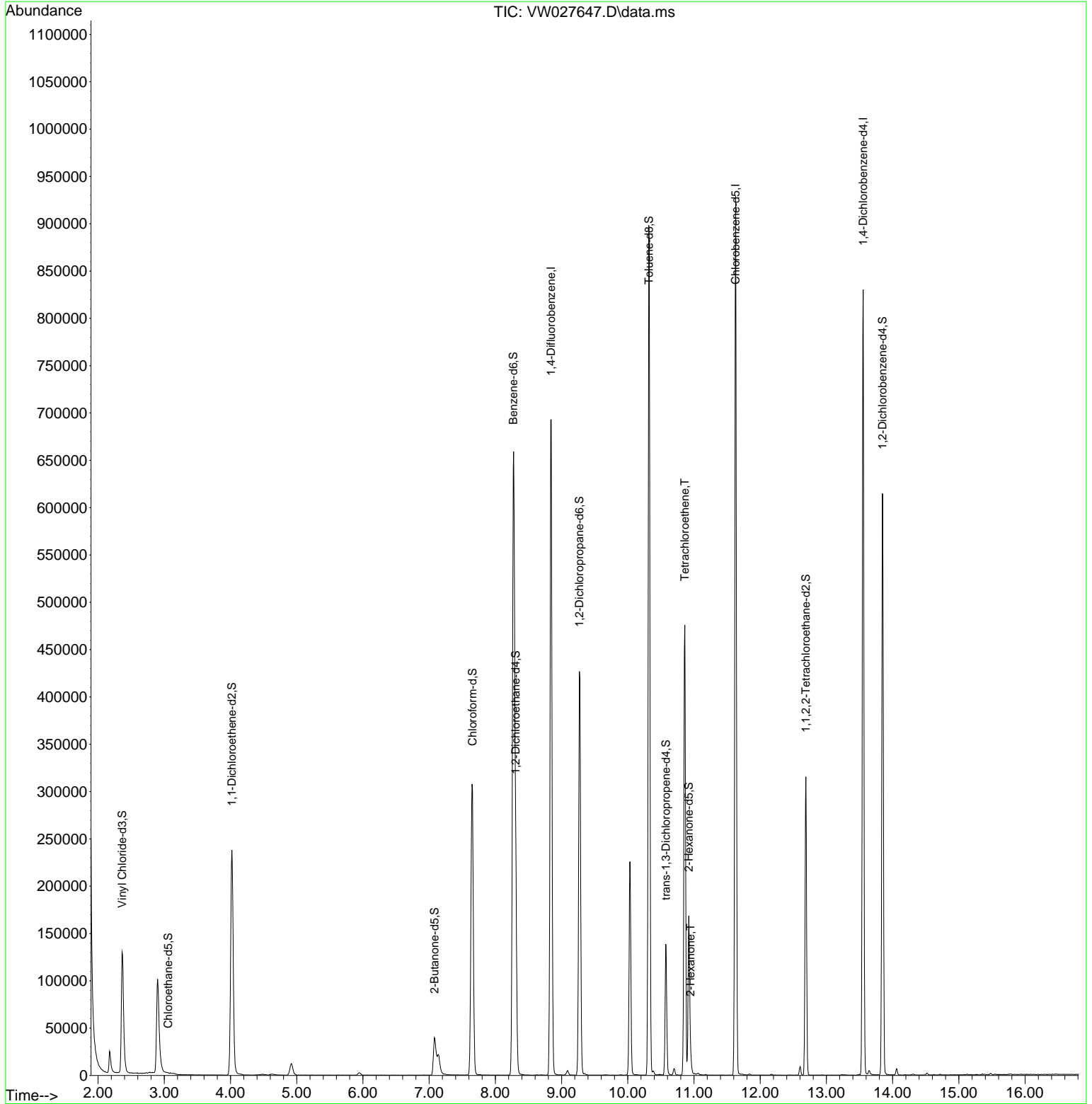
Compound	R.T.	QIon	Response	Conc	Units	Dev(Min)

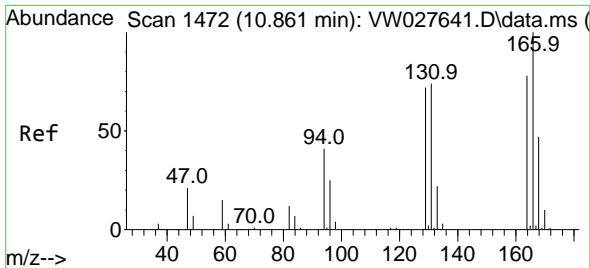
Internal Standards						
1) 1,4-Difluorobenzene	8.843	114	636393	25.000	ug/L	0.00
28) Chlorobenzene-d5	11.629	117	543269	25.000	ug/L	0.00
58) 1,4-Dichlorobenzene-d4	13.556	152	232238	25.000	ug/L	0.00
System Monitoring Compounds						
4) Vinyl Chloride-d3	2.363	65	192678	21.378	ug/L	0.00
Spiked Amount	25.000	Range 30 - 150	Recovery =	85.520%		
7) Chloroethane-d5	3.058	69	166	0.024	ug/L	0.16
Spiked Amount	25.000	Range 30 - 150	Recovery =	0.080%#		
11) 1,1-Dichloroethene-d2	4.021	65	74397	20.611	ug/L	0.00
Spiked Amount	25.000	Range 45 - 110	Recovery =	82.440%		
21) 2-Butanone-d5	7.081	46	63644	41.469	ug/L	0.00
Spiked Amount	50.000	Range 20 - 135	Recovery =	82.940%		
24) Chloroform-d	7.654	84	338327	22.342	ug/L	0.00
Spiked Amount	25.000	Range 40 - 150	Recovery =	89.360%		
26) 1,2-Dichloroethane-d4	8.307	65	170782	24.019	ug/L	0.00
Spiked Amount	25.000	Range 70 - 130	Recovery =	96.080%		
32) Benzene-d6	8.270	84	731229	23.030	ug/L	0.00
Spiked Amount	25.000	Range 20 - 135	Recovery =	92.120%		
36) 1,2-Dichloropropane-d6	9.270	67	217039	24.128	ug/L	0.00
Spiked Amount	25.000	Range 70 - 120	Recovery =	96.520%		
41) Toluene-d8	10.319	98	628810	21.346	ug/L	0.00
Spiked Amount	25.000	Range 30 - 130	Recovery =	85.400%		
43) trans-1,3-Dichloroprop...	10.575	79	80725	23.179	ug/L	0.00
Spiked Amount	25.000	Range 30 - 135	Recovery =	92.720%		
47) 2-Hexanone-d5	10.922	63	61031	46.559	ug/L	0.00
Spiked Amount	50.000	Range 20 - 135	Recovery =	93.120%		
56) 1,1,2,2-Tetrachloroeth...	12.690	84	163851	24.087	ug/L	0.00
Spiked Amount	25.000	Range 45 - 120	Recovery =	96.360%		
66) 1,2-Dichlorobenzene-d4	13.848	152	167354	20.131	ug/L	0.00
Spiked Amount	25.000	Range 75 - 120	Recovery =	80.520%		
Target Compounds						
46) Tetrachloroethene	10.861	164	115177	16.802	ug/L	94
48) 2-Hexanone	10.947	43	7040	2.847	ug/L #	37

(#) = qualifier out of range (m) = manual integration (+) = signals summed

Data Path : Z:\voasrv\HPCHEM1\MSVOA_W\Data\VW121523\
 Data File : VW027647.D
 Acq On : 15 Dec 2023 20:21
 Operator : SY/MD
 Sample : 05834-04
 Misc : 4.95g/10mL/MSVOA_W/SOIL
 ALS Vial : 19 Sample Multiplier: 1

Quant Time: Dec 16 01:40:17 2023
 Quant Method : Z:\voasrv\HPCHEM1\MSVOA_W\Method\SFAMWLM121523SMA.M
 Quant Title : SFAM01.0
 QLast Update : Sat Dec 16 00:05:51 2023
 Response via : Initial Calibration

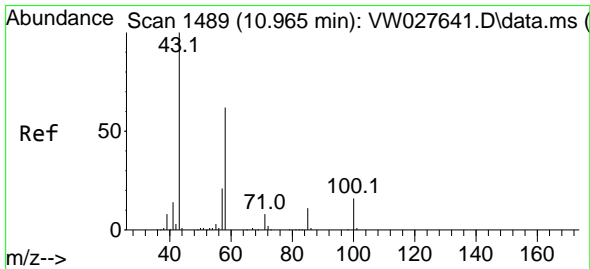
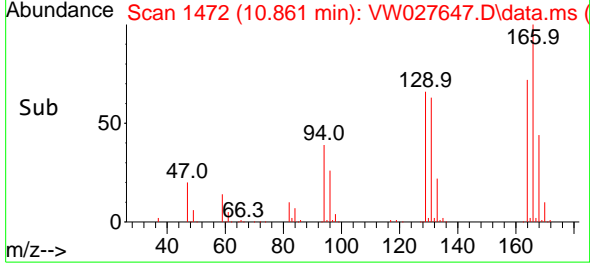
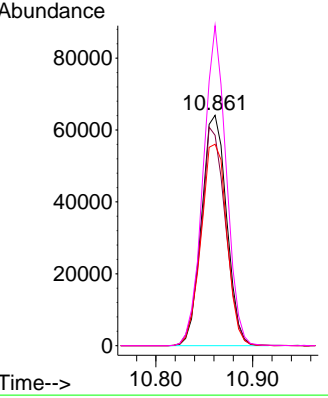
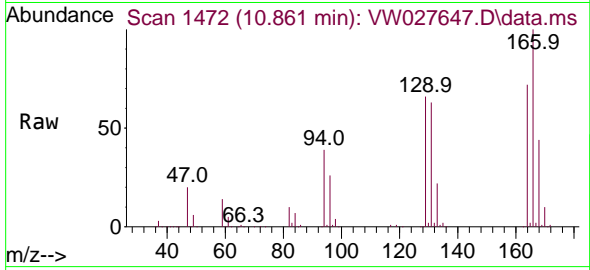




#46
 Tetrachloroethene
 Concen: 16.802 ug/L
 RT: 10.861 min Scan# 1472
 Delta R.T. 0.000 min
 Lab File: VW027647.D
 Acq: 15 Dec 2023 20:21

Tgt Ion:164 Resp: 115177

Ion	Ratio	Lower	Upper
164	100		
129	91.4	70.5	130.9
131	87.5	64.8	120.3
166	138.9	94.8	176.0



#48
 2-Hexanone
 Concen: 2.847 ug/L
 RT: 10.947 min Scan# 1486
 Delta R.T. -0.018 min
 Lab File: VW027647.D
 Acq: 15 Dec 2023 20:21

Tgt Ion: 43 Resp: 7040

Ion	Ratio	Lower	Upper
43	100		
58	3.7	50.4	75.6#
57	1.0	17.0	25.6#
100	0.0	11.9	17.9#

