

Data Path : Z:\voasrv\HPCHEM1\MSVOA\_W\Data\VW121523\  
 Data File : VW027644.D  
 Acq On : 15 Dec 2023 19:10  
 Operator : SY/MD  
 Sample : 05834-01  
 Misc : 4.25g/10mL/MSVOA\_W/SOIL  
 ALS Vial : 16 Sample Multiplier: 1

**Instrument :**  
 MSVOA\_W  
**ClientSampleId :**  
 BGQZ3

Quant Time: Dec 16 01:39:38 2023  
 Quant Method : Z:\voasrv\HPCHEM1\MSVOA\_W\Method\SFAMWLM121523SMA.M  
 Quant Title : SFAM01.0  
 QLast Update : Sat Dec 16 00:05:51 2023  
 Response via : Initial Calibration

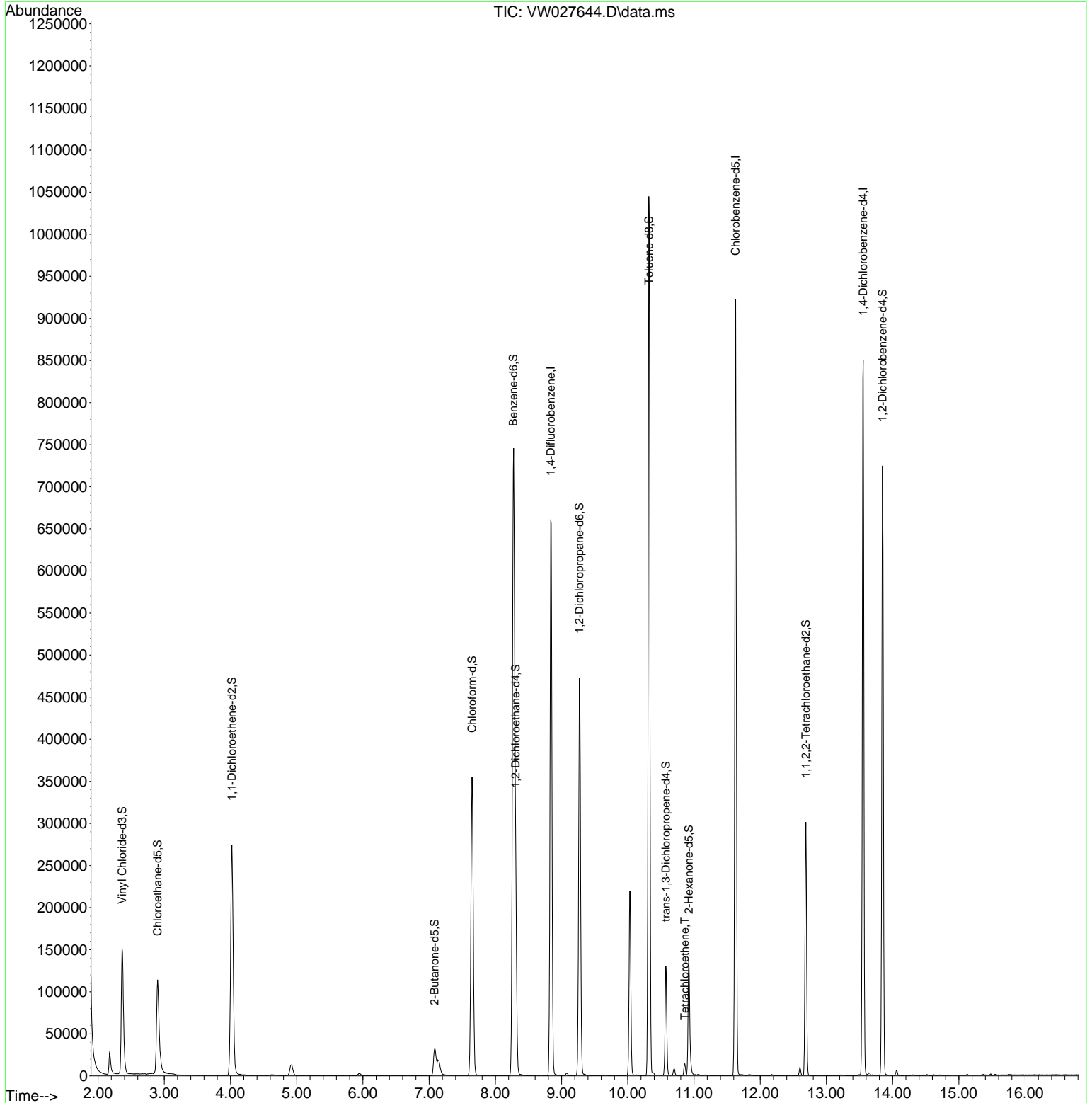
Compound	R.T.	QIon	Response	Conc	Units	Dev(Min)
-----						
Internal Standards						
1) 1,4-Difluorobenzene	8.837	114	610893	25.000	ug/L	0.00
28) Chlorobenzene-d5	11.629	117	545132	25.000	ug/L	0.00
58) 1,4-Dichlorobenzene-d4	13.556	152	233941	25.000	ug/L	0.00
System Monitoring Compounds						
4) Vinyl Chloride-d3	2.363	65	219864	25.413	ug/L	0.00
Spiked Amount	25.000	Range 30 - 150	Recovery =	101.640%		
7) Chloroethane-d5	2.899	69	178233	26.459	ug/L	0.00
Spiked Amount	25.000	Range 30 - 150	Recovery =	105.840%		
11) 1,1-Dichloroethene-d2	4.021	65	85665	24.723	ug/L	0.00
Spiked Amount	25.000	Range 45 - 110	Recovery =	98.880%		
21) 2-Butanone-d5	7.081	46	55541	37.700	ug/L	0.00
Spiked Amount	50.000	Range 20 - 135	Recovery =	75.400%		
24) Chloroform-d	7.648	84	378800	26.059	ug/L	0.00
Spiked Amount	25.000	Range 40 - 150	Recovery =	104.240%		
26) 1,2-Dichloroethane-d4	8.307	65	177822	26.053	ug/L	0.00
Spiked Amount	25.000	Range 70 - 130	Recovery =	104.200%		
32) Benzene-d6	8.270	84	827659	25.978	ug/L	0.00
Spiked Amount	25.000	Range 20 - 135	Recovery =	103.920%		
36) 1,2-Dichloropropane-d6	9.270	67	240290	26.622	ug/L	0.00
Spiked Amount	25.000	Range 70 - 120	Recovery =	106.480%		
41) Toluene-d8	10.319	98	730409	24.710	ug/L	0.00
Spiked Amount	25.000	Range 30 - 130	Recovery =	98.840%		
43) trans-1,3-Dichloroprop...	10.575	79	77259	22.108	ug/L	0.00
Spiked Amount	25.000	Range 30 - 135	Recovery =	88.440%		
47) 2-Hexanone-d5	10.922	63	49712	37.794	ug/L	0.00
Spiked Amount	50.000	Range 20 - 135	Recovery =	75.580%		
56) 1,1,2,2-Tetrachloroeth...	12.690	84	157026	23.005	ug/L	0.00
Spiked Amount	25.000	Range 45 - 120	Recovery =	92.000%		
66) 1,2-Dichlorobenzene-d4	13.849	152	204203	24.385	ug/L	0.00
Spiked Amount	25.000	Range 75 - 120	Recovery =	97.560%		
Target Compounds						
46) Tetrachloroethene	10.861	164	3431	0.499	ug/L	89
-----						

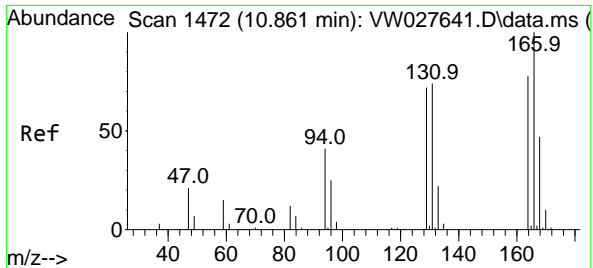
(#) = qualifier out of range (m) = manual integration (+) = signals summed

Data Path : Z:\voasrv\HPCHEM1\MSVOA\_W\Data\VW121523\  
 Data File : VW027644.D  
 Acq On : 15 Dec 2023 19:10  
 Operator : SY/MD  
 Sample : 05834-01  
 Misc : 4.25g/10mL/MSVOA\_W/SOIL  
 ALS Vial : 16 Sample Multiplier: 1

Instrument :  
 MSVOA\_W  
 ClientSampleId :  
 BGQZ3

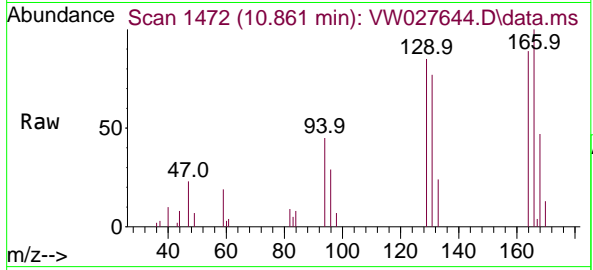
Quant Time: Dec 16 01:39:38 2023  
 Quant Method : Z:\voasrv\HPCHEM1\MSVOA\_W\Method\SFAMWLM121523SMA.M  
 Quant Title : SFAM01.0  
 QLast Update : Sat Dec 16 00:05:51 2023  
 Response via : Initial Calibration





#46  
 Tetrachloroethene  
 Concen: 0.499 ug/L  
 RT: 10.861 min Scan# 14  
 Delta R.T. 0.000 min  
 Lab File: VW027644.D  
 Acq: 15 Dec 2023 19:10

Instrument : MSVOA\_W  
 ClientSampleId : BGQZ3



Tgt Ion:164 Resp: 3431

Ion	Ratio	Lower	Upper
164	100		
129	96.4	70.5	130.9
131	86.8	64.8	120.3
166	112.8	94.8	176.0

