

Data Path : Z:\voasrv\HPCHEM1\MSVOA_W\Data\VW121523\
 Data File : VW027669.D
 Acq On : 16 Dec 2023 05:48
 Operator : SY/MD
 Sample : 05799-07
 Misc : 4.23g/10mL/MSVOA_W/SOIL
 ALS Vial : 43 Sample Multiplier: 1

Instrument :
 MSVOA_W
ClientSampleId :
 BGR06

Quant Time: Dec 16 06:24:02 2023
 Quant Method : Z:\voasrv\HPCHEM1\MSVOA_W\Method\SFAMWLM121523SMA.M
 Quant Title : SFAM01.0
 QLast Update : Sat Dec 16 04:21:48 2023
 Response via : Initial Calibration

Compound	R.T.	QIon	Response	Conc	Units	Dev(Min)

Internal Standards						
1) 1,4-Difluorobenzene	8.843	114	622043	25.000	ug/L	0.00
28) Chlorobenzene-d5	11.629	117	524496	25.000	ug/L	0.00
58) 1,4-Dichlorobenzene-d4	13.556	152	205413	25.000	ug/L	0.00
System Monitoring Compounds						
4) Vinyl Chloride-d3	2.363	65	195895	22.237	ug/L	0.00
Spiked Amount	25.000	Range 30 - 150	Recovery =	88.960%		
7) Chloroethane-d5	2.899	69	157716	22.994	ug/L	0.00
Spiked Amount	25.000	Range 30 - 150	Recovery =	91.960%		
11) 1,1-Dichloroethene-d2	4.021	65	76779	21.761	ug/L	0.00
Spiked Amount	25.000	Range 45 - 110	Recovery =	87.040%		
21) 2-Butanone-d5	7.087	46	47608	31.736	ug/L	0.00
Spiked Amount	50.000	Range 20 - 135	Recovery =	63.480%		
24) Chloroform-d	7.654	84	324197	21.903	ug/L	0.00
Spiked Amount	25.000	Range 40 - 150	Recovery =	87.600%		
26) 1,2-Dichloroethane-d4	8.307	65	151203	21.756	ug/L	0.00
Spiked Amount	25.000	Range 70 - 130	Recovery =	87.040%		
32) Benzene-d6	8.276	84	712555	23.246	ug/L	0.00
Spiked Amount	25.000	Range 20 - 135	Recovery =	93.000%		
36) 1,2-Dichloropropane-d6	9.270	67	200425	23.079	ug/L	0.00
Spiked Amount	25.000	Range 70 - 120	Recovery =	92.320%		
41) Toluene-d8	10.319	98	627089	22.049	ug/L	0.00
Spiked Amount	25.000	Range 30 - 130	Recovery =	88.200%		
43) trans-1,3-Dichloroprop...	10.575	79	65931	19.609	ug/L	0.00
Spiked Amount	25.000	Range 30 - 135	Recovery =	78.440%		
47) 2-Hexanone-d5	10.922	63	42300	33.424	ug/L	0.00
Spiked Amount	50.000	Range 20 - 135	Recovery =	66.840%		
56) 1,1,2,2-Tetrachloroeth...	12.690	84	132005	20.100	ug/L	0.00
Spiked Amount	25.000	Range 45 - 120	Recovery =	80.400%		
66) 1,2-Dichlorobenzene-d4	13.848	152	154600	21.026	ug/L	0.00
Spiked Amount	25.000	Range 75 - 120	Recovery =	84.120%		

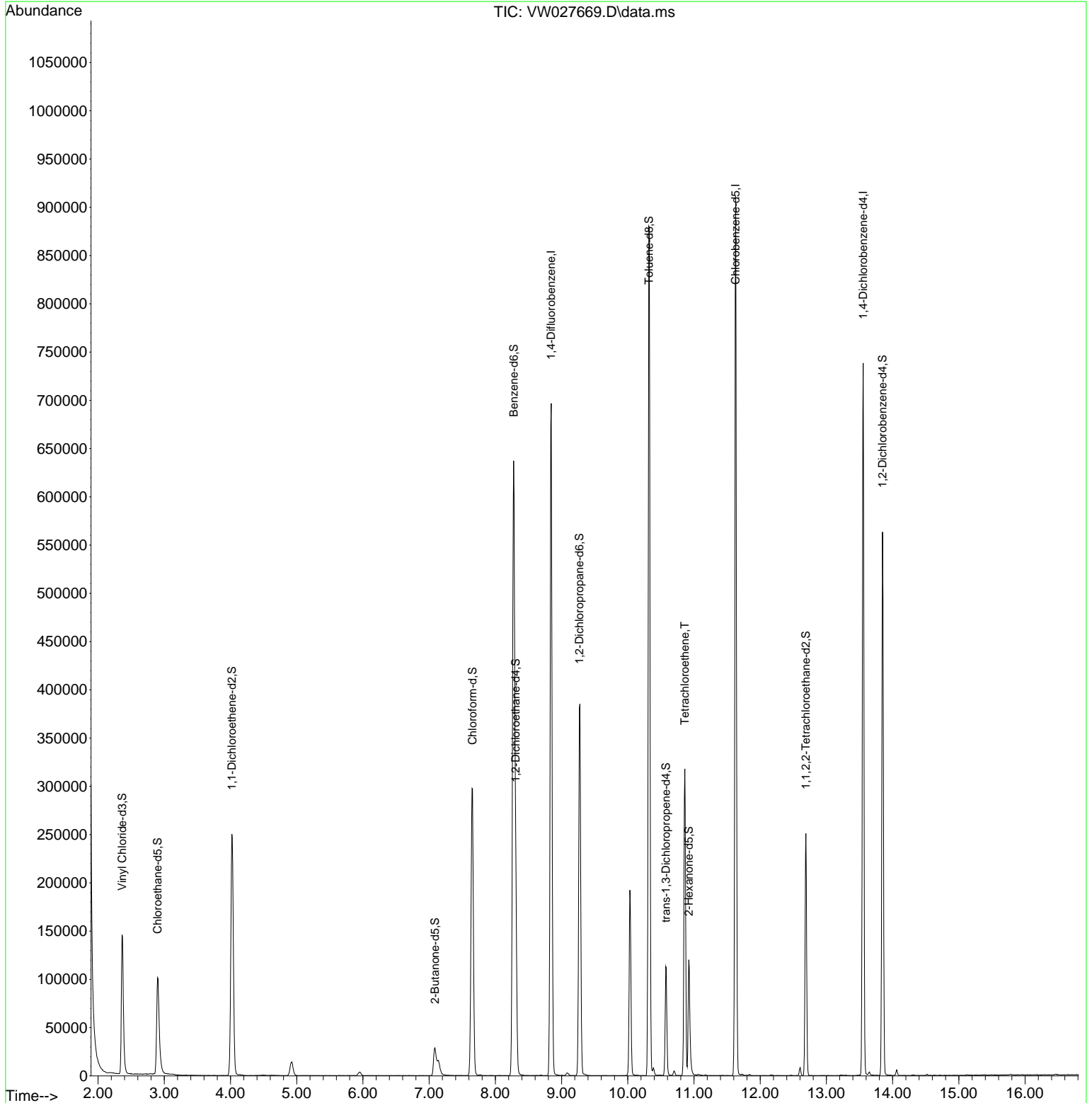
Target Compounds						Qvalue
46) Tetrachloroethene	10.861	164	75734	11.444	ug/L	95

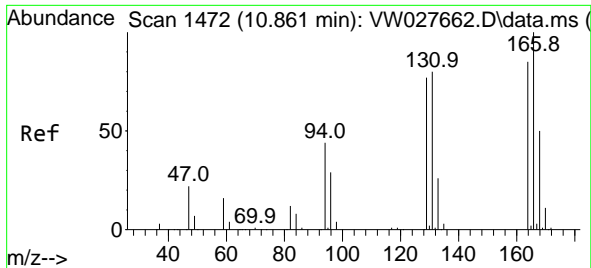
(#) = qualifier out of range (m) = manual integration (+) = signals summed

Data Path : Z:\voasrv\HPCHEM1\MSVOA_W\Data\VW121523\
 Data File : VW027669.D
 Acq On : 16 Dec 2023 05:48
 Operator : SY/MD
 Sample : 05799-07
 Misc : 4.23g/10mL/MSVOA_W/SOIL
 ALS Vial : 43 Sample Multiplier: 1

Instrument :
 MSVOA_W
 ClientSampleId :
 BGR06

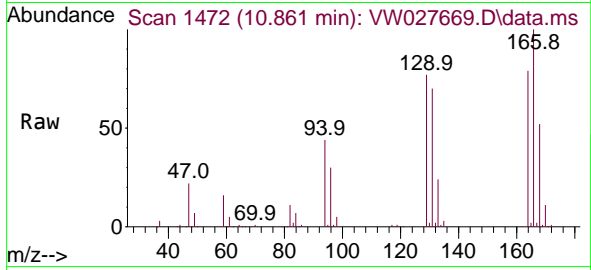
Quant Time: Dec 16 06:24:02 2023
 Quant Method : Z:\voasrv\HPCHEM1\MSVOA_W\Method\SFAMWLM121523SMA.M
 Quant Title : SFAM01.0
 QLast Update : Sat Dec 16 04:21:48 2023
 Response via : Initial Calibration





#46
 Tetrachloroethene
 Concen: 11.444 ug/L
 RT: 10.861 min Scan# 14
 Delta R.T. -0.000 min
 Lab File: VW027669.D
 Acq: 16 Dec 2023 05:48

Instrument :
 MSVOA_W
 ClientSampleId :
 BGR06



Tgt Ion:164 Resp: 75734

Ion	Ratio	Lower	Upper
164	100		
129	97.4	70.5	130.9
131	89.1	64.8	120.3
166	126.9	94.8	176.0

