

Data Path : Z:\voasrv\HPCHEM1\MSVOA_W\Data\VW121624\
 Data File : VW031263.D
 Acq On : 16 Dec 2024 11:48
 Operator : SY/MD
 Sample : P5232-11
 Misc : 5.71g/10mL/MSVOA_W/SOILB
 ALS Vial : 8 Sample Multiplier: 1

Instrument :
 MSVOA_W
 ClientSampleId :

Quant Time: Dec 17 00:35:41 2024
 Quant Method : Z:\voasrv\HPCHEM1\MSVOA_W\Method\SFAMWLM121324SMA.M
 Quant Title : SFAM01.0
 QLast Update : Tue Dec 17 00:33:32 2024
 Response via : Initial Calibration

Compound	R.T.	QIon	Response	Conc	Units	Dev(Min)

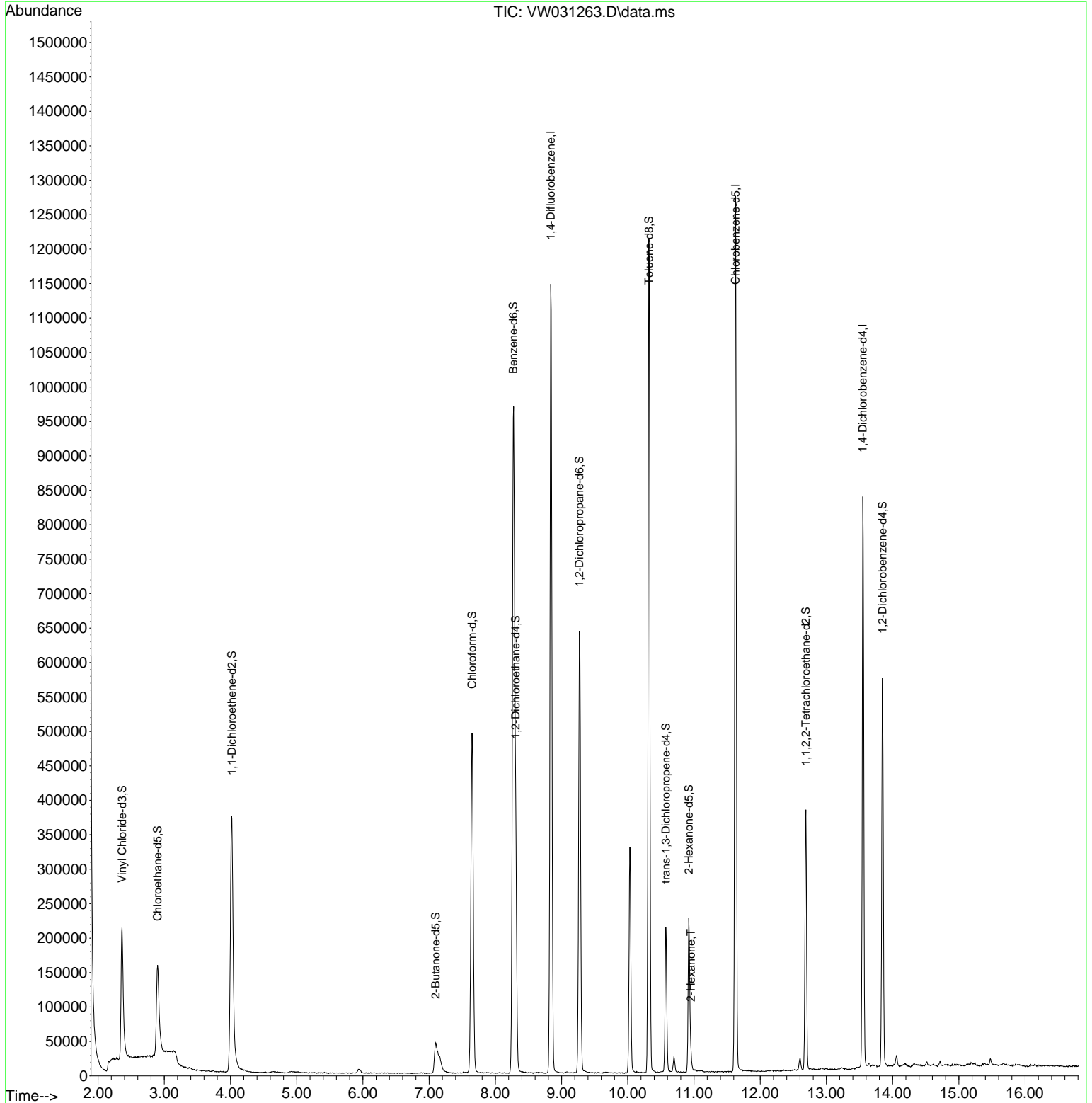
Internal Standards						
1) 1,4-Difluorobenzene	8.837	114	967850	25.000	ug/L	0.00
28) Chlorobenzene-d5	11.629	117	679976	25.000	ug/L	0.00
58) 1,4-Dichlorobenzene-d4	13.550	152	204473	25.000	ug/L	0.00
System Monitoring Compounds						
4) Vinyl Chloride-d3	2.363	65	290180	19.927	ug/L	0.00
Spiked Amount	25.000	Range 30 - 150	Recovery =	79.720%		
7) Chloroethane-d5	2.899	69	213667	19.835	ug/L	0.00
Spiked Amount	25.000	Range 30 - 150	Recovery =	79.320%		
11) 1,1-Dichloroethene-d2	4.021	65	132093	19.123	ug/L	0.00
Spiked Amount	25.000	Range 45 - 110	Recovery =	76.480%		
21) 2-Butanone-d5	7.100	46	89344	32.578	ug/L	0.00
Spiked Amount	50.000	Range 20 - 135	Recovery =	65.160%		
24) Chloroform-d	7.648	84	503931	19.003	ug/L	0.00
Spiked Amount	25.000	Range 40 - 150	Recovery =	76.000%		
26) 1,2-Dichloroethane-d4	8.307	65	284747	21.381	ug/L	0.00
Spiked Amount	25.000	Range 70 - 130	Recovery =	85.520%		
32) Benzene-d6	8.270	84	999254	22.928	ug/L	0.00
Spiked Amount	25.000	Range 20 - 135	Recovery =	91.720%		
36) 1,2-Dichloropropane-d6	9.270	67	299769	23.600	ug/L	0.00
Spiked Amount	25.000	Range 70 - 120	Recovery =	94.400%		
41) Toluene-d8	10.319	98	816310	20.134	ug/L	0.00
Spiked Amount	25.000	Range 30 - 130	Recovery =	80.520%		
43) trans-1,3-Dichloroprop...	10.575	79	116261	19.851	ug/L	0.00
Spiked Amount	25.000	Range 30 - 135	Recovery =	79.400%		
47) 2-Hexanone-d5	10.922	63	75036	43.927	ug/L	0.00
Spiked Amount	50.000	Range 20 - 135	Recovery =	87.860%		
56) 1,1,2,2-Tetrachloroeth...	12.690	84	186913	23.437	ug/L	0.00
Spiked Amount	25.000	Range 45 - 120	Recovery =	93.760%		
66) 1,2-Dichlorobenzene-d4	13.848	152	142892	18.824	ug/L	0.00
Spiked Amount	25.000	Range 75 - 120	Recovery =	75.280%		
Target Compounds						
48) 2-Hexanone	10.953	43	11608	2.454	ug/L	Qvalue # 40

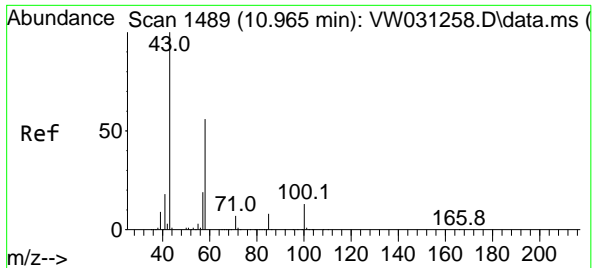
(#) = qualifier out of range (m) = manual integration (+) = signals summed

Data Path : Z:\voasrv\HPCHEM1\MSVOA_W\Data\VW121624\
 Data File : VW031263.D
 Acq On : 16 Dec 2024 11:48
 Operator : SY/MD
 Sample : P5232-11
 Misc : 5.71g/10mL/MSVOA_W/SOILB
 ALS Vial : 8 Sample Multiplier: 1

Instrument :
 MSVOA_W
 ClientSampleId :

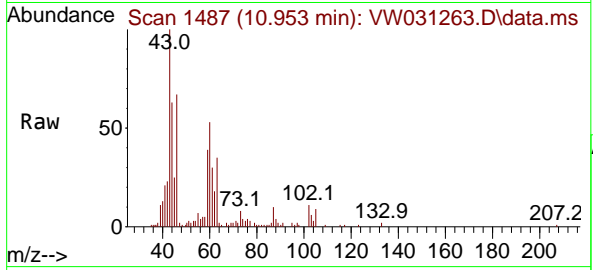
Quant Time: Dec 17 00:35:41 2024
 Quant Method : Z:\voasrv\HPCHEM1\MSVOA_W\Method\SFAMWLM121324SMA.M
 Quant Title : SFAM01.0
 QLast Update : Tue Dec 17 00:33:32 2024
 Response via : Initial Calibration





#48
 2-Hexanone
 Concen: 2.454 ug/L
 RT: 10.953 min Scan# 14
 Delta R.T. -0.012 min
 Lab File: VW031263.D
 Acq: 16 Dec 2024 11:48

Instrument : MSVOA_W
 ClientSampleId :



Tgt Ion: 43 Resp: 11608

Ion	Ratio	Lower	Upper
43	100		
58	2.0	43.0	64.6#
57	0.0	15.7	23.5#
100	0.0	10.3	15.5#

