

Data Path : Z:\voasrv\HPCHEM1\MSVOA_W\Data\VW121624\
 Data File : VW031286.D
 Acq On : 16 Dec 2024 21:48
 Operator : SY/MD
 Sample : P5258-01
 Misc : 4.90g/10mL/MSVOA_W/SOIL/B
 ALS Vial : 33 Sample Multiplier: 1

Instrument :
 MSVOA_W
 ClientSampleId :

Quant Time: Dec 17 03:40:35 2024
 Quant Method : Z:\voasrv\HPCHEM1\MSVOA_W\Method\SFAMWLM121324SMA.M
 Quant Title : SFAM01.0
 QLast Update : Tue Dec 17 02:36:53 2024
 Response via : Initial Calibration

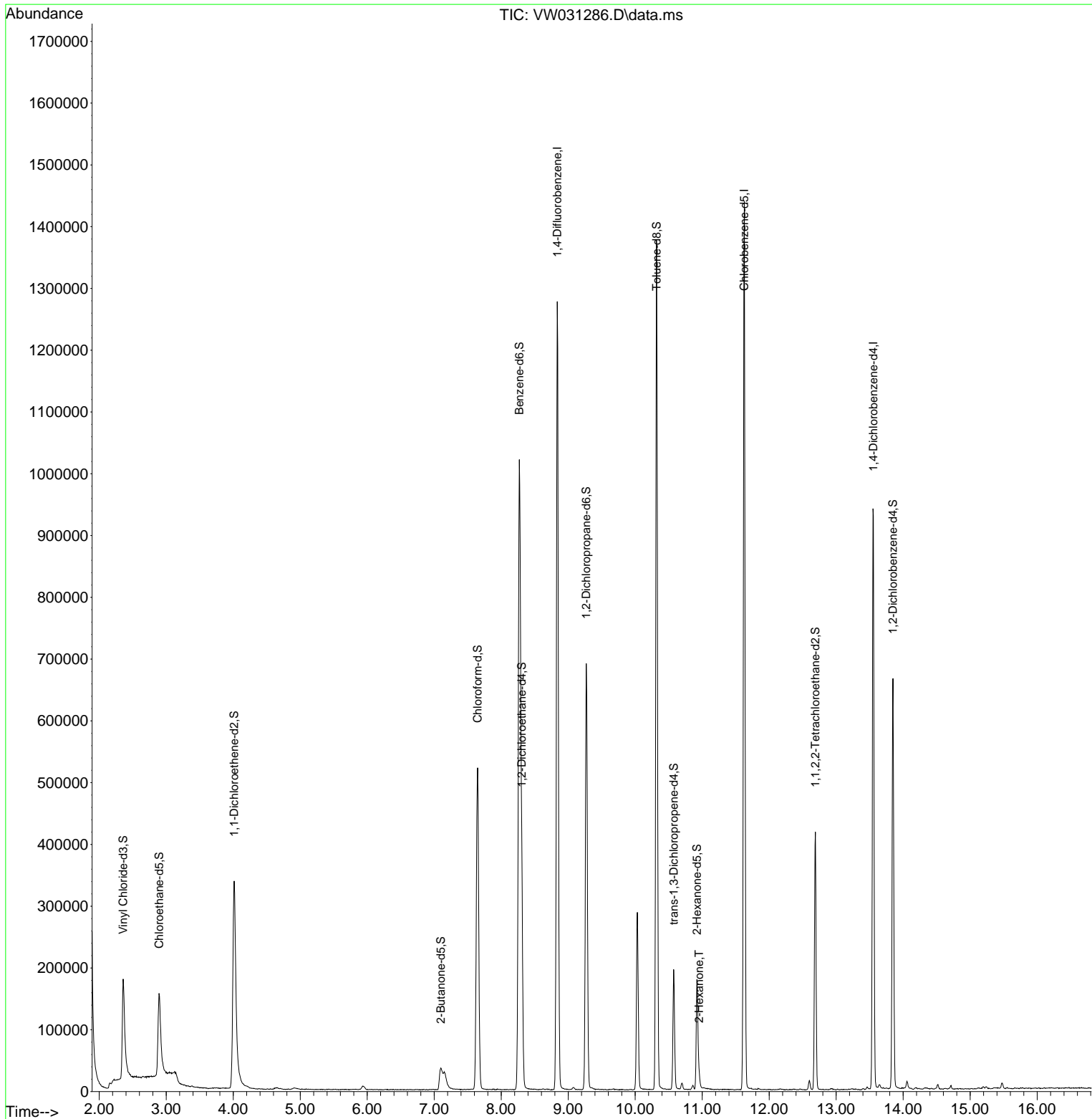
Compound	R.T.	QIon	Response	Conc	Units	Dev(Min)
Internal Standards						
1) 1,4-Difluorobenzene	8.837	114	1061922	25.000	ug/L	0.00
28) Chlorobenzene-d5	11.629	117	770983	25.000	ug/L	0.00
58) 1,4-Dichlorobenzene-d4	13.556	152	242364	25.000	ug/L	0.00
System Monitoring Compounds						
4) Vinyl Chloride-d3	2.356	65	286206	17.913	ug/L	0.00
Spiked Amount	25.000	Range 30 - 150	Recovery =	71.640%		
7) Chloroethane-d5	2.893	69	220446	18.651	ug/L	0.00
Spiked Amount	25.000	Range 30 - 150	Recovery =	74.600%		
11) 1,1-Dichloroethene-d2	4.015	65	131198	17.311	ug/L	0.00
Spiked Amount	25.000	Range 45 - 110	Recovery =	69.240%		
21) 2-Butanone-d5	7.100	46	67933	22.576	ug/L	0.00
Spiked Amount	50.000	Range 20 - 135	Recovery =	45.160%		
24) Chloroform-d	7.648	84	532186	18.291	ug/L	0.00
Spiked Amount	25.000	Range 40 - 150	Recovery =	73.160%		
26) 1,2-Dichloroethane-d4	8.307	65	297361	20.350	ug/L	0.00
Spiked Amount	25.000	Range 70 - 130	Recovery =	81.400%		
32) Benzene-d6	8.270	84	1053885	21.327	ug/L	0.00
Spiked Amount	25.000	Range 20 - 135	Recovery =	85.320%		
36) 1,2-Dichloropropane-d6	9.270	67	313995	21.802	ug/L	0.00
Spiked Amount	25.000	Range 70 - 120	Recovery =	87.200%		
41) Toluene-d8	10.318	98	891282	19.388	ug/L	0.00
Spiked Amount	25.000	Range 30 - 130	Recovery =	77.560%		
43) trans-1,3-Dichloroprop...	10.575	79	103823	15.634	ug/L	0.00
Spiked Amount	25.000	Range 30 - 135	Recovery =	62.520%		
47) 2-Hexanone-d5	10.922	63	60070	31.015	ug/L	0.00
Spiked Amount	50.000	Range 20 - 135	Recovery =	62.040%		
56) 1,1,2,2-Tetrachloroeth...	12.690	84	203169	22.468	ug/L	0.00
Spiked Amount	25.000	Range 45 - 120	Recovery =	89.880%		
66) 1,2-Dichlorobenzene-d4	13.848	152	165743	18.421	ug/L	0.00
Spiked Amount	25.000	Range 75 - 120	Recovery =	73.680%#		
Target Compounds						
48) 2-Hexanone	10.953	43	19695	3.672	ug/L #	51

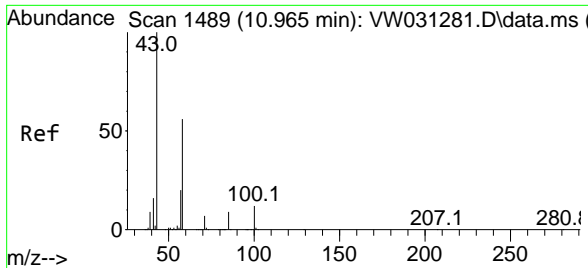
(#) = qualifier out of range (m) = manual integration (+) = signals summed

Data Path : Z:\voasrv\HPCHEM1\MSVOA_W\Data\VW121624\
 Data File : VW031286.D
 Acq On : 16 Dec 2024 21:48
 Operator : SY/MD
 Sample : P5258-01
 Misc : 4.90g/10mL/MSVOA_W/SOIL/B
 ALS Vial : 33 Sample Multiplier: 1

Instrument :
 MSVOA_W
 ClientSampleId :

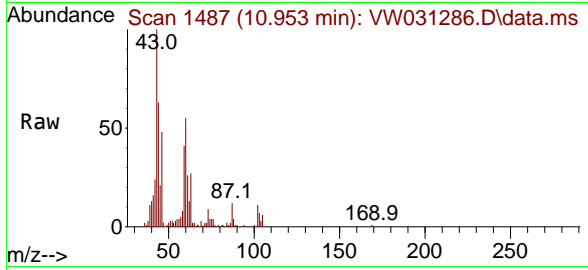
Quant Time: Dec 17 03:40:35 2024
 Quant Method : Z:\voasrv\HPCHEM1\MSVOA_W\Method\SFAMWLM121324SMA.M
 Quant Title : SFAM01.0
 QLast Update : Tue Dec 17 02:36:53 2024
 Response via : Initial Calibration





#48
 2-Hexanone
 Concen: 3.672 ug/L
 RT: 10.953 min Scan# 14
 Delta R.T. -0.012 min
 Lab File: VW031286.D
 Acq: 16 Dec 2024 21:48

Instrument :
 MSVOA_W
 ClientSampleId :



Tgt Ion: 43 Resp: 19695

Ion	Ratio	Lower	Upper
43	100		
58	14.0	43.0	64.6#
57	0.0	15.7	23.5#
100	0.2	10.3	15.5#

