

Data Path : Z:\voasrv\HPCHEM1\MSVOA_W\Data\VW121923\
 Data File : VW027770.D
 Acq On : 19 Dec 2023 11:39
 Operator : SY/MD
 Sample : 05794-06RE
 Misc : 4.42g/10mL/MSVOA_W/SOIL
 ALS Vial : 1 Sample Multiplier: 1

Instrument :
 MSVOA_W
 ClientSampleId :
 BH3Q0RE

Quant Time: Dec 19 22:34:50 2023
 Quant Method : Z:\voasrv\HPCHEM1\MSVOA_W\Method\SFAMWLM121523SMA.M
 Quant Title : SFAM01.0
 QLast Update : Sun Dec 17 01:25:09 2023
 Response via : Initial Calibration

Compound	R.T.	QIon	Response	Conc	Units	Dev(Min)

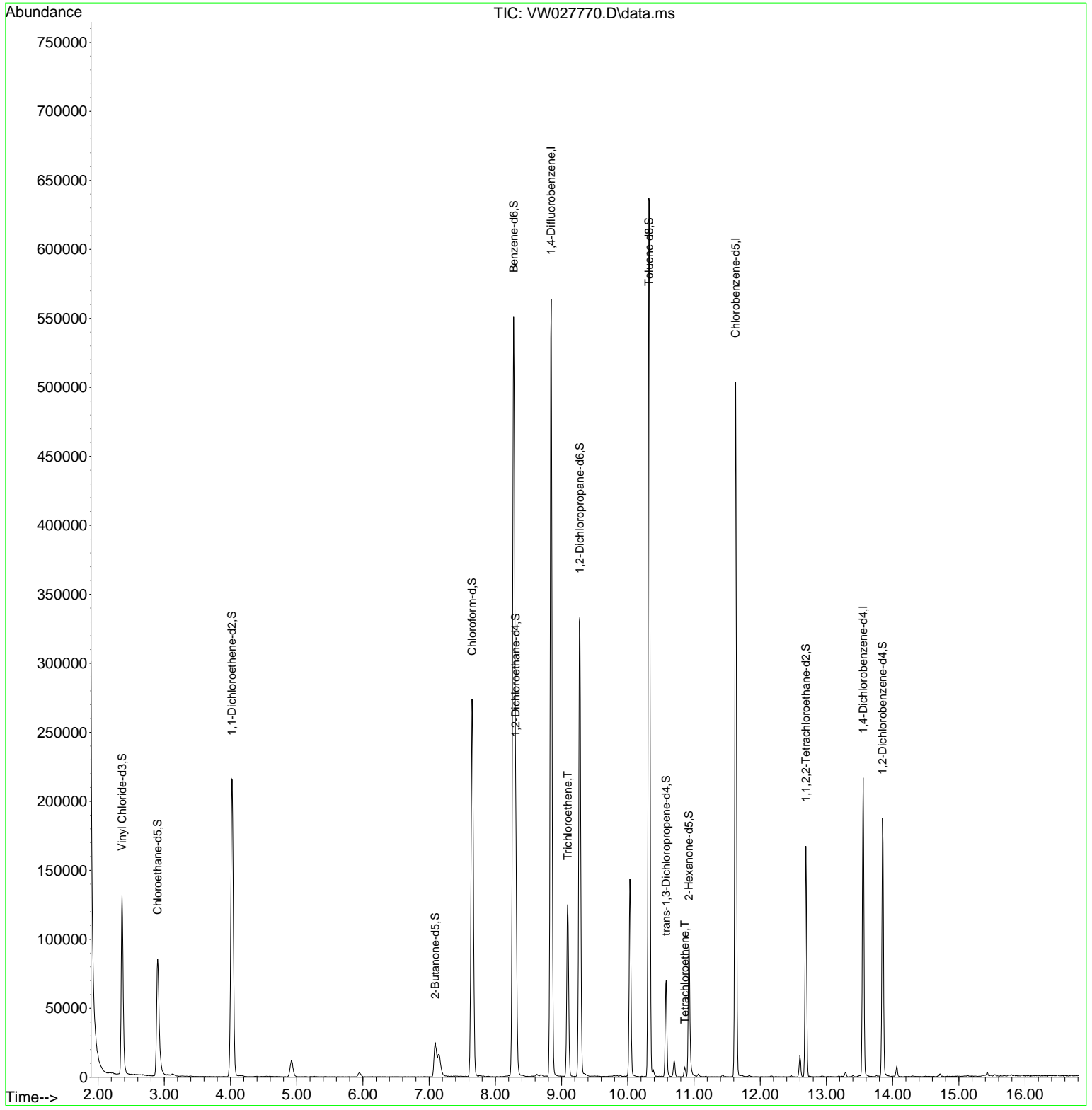
Internal Standards						
1) 1,4-Difluorobenzene	8.843	114	509451	25.000	ug/L	0.00
28) Chlorobenzene-d5	11.629	117	295228	25.000	ug/L	0.00
58) 1,4-Dichlorobenzene-d4	13.556	152	60988	25.000	ug/L	0.00
System Monitoring Compounds						
4) Vinyl Chloride-d3	2.363	65	167895	23.270	ug/L	0.00
Spiked Amount	25.000	Range 30 - 150	Recovery =	93.080%		
7) Chloroethane-d5	2.899	69	133185	23.709	ug/L	0.00
Spiked Amount	25.000	Range 30 - 150	Recovery =	94.840%		
11) 1,1-Dichloroethene-d2	4.021	65	64903	22.461	ug/L	0.00
Spiked Amount	25.000	Range 45 - 110	Recovery =	89.840%		
21) 2-Butanone-d5	7.094	46	43196	35.159	ug/L	0.00
Spiked Amount	50.000	Range 20 - 135	Recovery =	70.320%		
24) Chloroform-d	7.648	84	294286	24.276	ug/L	0.00
Spiked Amount	25.000	Range 40 - 150	Recovery =	97.120%		
26) 1,2-Dichloroethane-d4	8.307	65	124405	21.856	ug/L	0.00
Spiked Amount	25.000	Range 70 - 130	Recovery =	87.440%		
32) Benzene-d6	8.276	84	608298	35.255	ug/L	0.00
Spiked Amount	25.000	Range 20 - 135	Recovery =	141.040%#		
36) 1,2-Dichloropropane-d6	9.276	67	172408	35.270	ug/L	0.00
Spiked Amount	25.000	Range 70 - 120	Recovery =	141.080%#		
41) Toluene-d8	10.319	98	455154	28.432	ug/L	0.00
Spiked Amount	25.000	Range 30 - 130	Recovery =	113.720%		
43) trans-1,3-Dichloroprop...	10.581	79	42200	22.298	ug/L	0.00
Spiked Amount	25.000	Range 30 - 135	Recovery =	89.200%		
47) 2-Hexanone-d5	10.922	63	36668	51.475	ug/L	0.00
Spiked Amount	50.000	Range 20 - 135	Recovery =	102.940%		
56) 1,1,2,2-Tetrachloroeth...	12.690	84	84702	22.913	ug/L	0.00
Spiked Amount	25.000	Range 45 - 120	Recovery =	91.640%		
66) 1,2-Dichlorobenzene-d4	13.848	152	52547	24.070	ug/L	0.00
Spiked Amount	25.000	Range 75 - 120	Recovery =	96.280%		
Target Compounds						
						Qvalue
34) Trichloroethene	9.093	95	46339	9.933	ug/L	97
46) Tetrachloroethene	10.861	164	1537	0.413	ug/L #	72

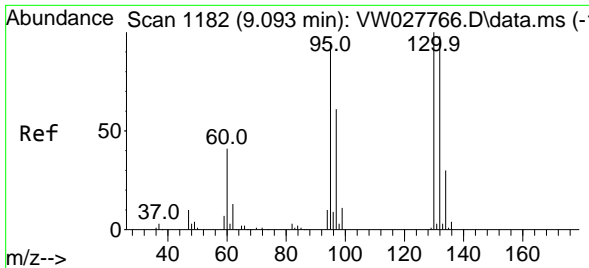
(#) = qualifier out of range (m) = manual integration (+) = signals summed

Data Path : Z:\voasrv\HPCHEM1\MSVOA_W\Data\VW121923\
 Data File : VW027770.D
 Acq On : 19 Dec 2023 11:39
 Operator : SY/MD
 Sample : 05794-06RE
 Misc : 4.42g/10mL/MSVOA_W/SOIL
 ALS Vial : 1 Sample Multiplier: 1

Instrument :
 MSVOA_W
 ClientSampleId :
 BH3Q0RE

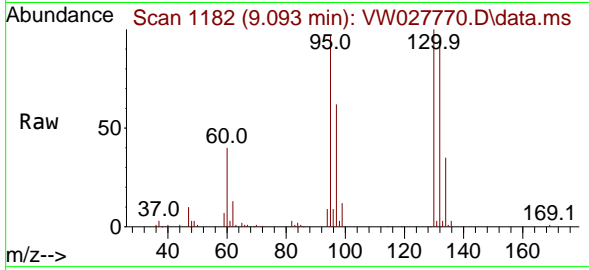
Quant Time: Dec 19 22:34:50 2023
 Quant Method : Z:\voasrv\HPCHEM1\MSVOA_W\Method\SFAMWLM121523SMA.M
 Quant Title : SFAM01.0
 QLast Update : Sun Dec 17 01:25:09 2023
 Response via : Initial Calibration





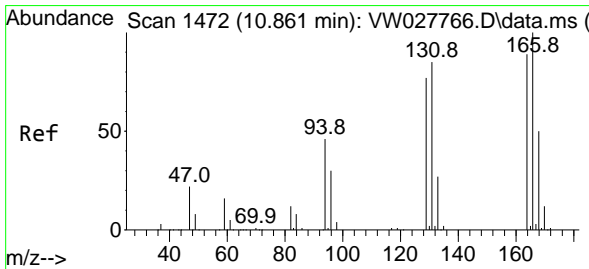
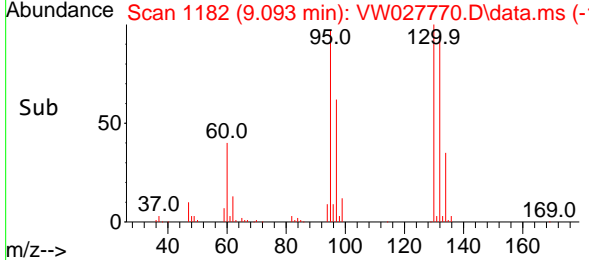
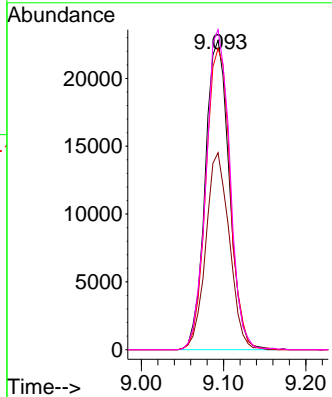
#34
 Trichloroethene
 Concen: 9.933 ug/L
 RT: 9.093 min Scan# 1182
 Delta R.T. 0.006 min
 Lab File: VW027770.D
 Acq: 19 Dec 2023 11:39

Instrument : MSVOA_W
 ClientSampleId : BH3Q0RE

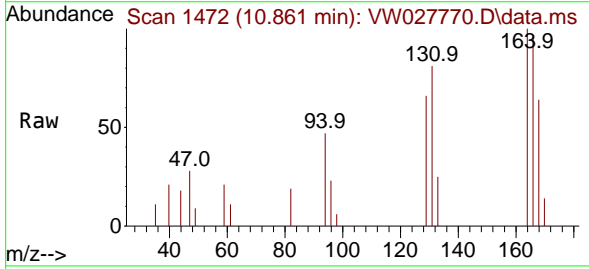


Tgt Ion: 95 Resp: 46339

Ion	Ratio	Lower	Upper
95	100		
97	63.7	45.9	85.3
132	97.3	70.4	130.8
130	103.4	74.8	139.0



#46
 Tetrachloroethene
 Concen: 0.413 ug/L
 RT: 10.861 min Scan# 1472
 Delta R.T. -0.000 min
 Lab File: VW027770.D
 Acq: 19 Dec 2023 11:39



Tgt Ion: 164 Resp: 1537

Ion	Ratio	Lower	Upper
164	100		
129	66.1	70.5	130.9#
131	80.9	64.8	120.3
166	95.9	94.8	176.0

