

Data Path : Z:\voasrv\HPCHEM1\MSVOA\_W\Data\VW122024\  
 Data File : VW031414.D  
 Acq On : 20 Dec 2024 09:08  
 Operator : SY/MD  
 Sample : VSTDCCC025  
 Misc : 5.00g/10mL/MSVOA\_W/SOIL  
 ALS Vial : 2 Sample Multiplier: 1

Instrument :  
 MSVOA\_W  
 ClientSampleId :

Quant Time: Dec 20 21:55:50 2024  
 Quant Method : Z:\voasrv\HPCHEM1\MSVOA\_W\Method\SFAMWLM121324SMA.M  
 Quant Title : SFAM01.0  
 QLast Update : Fri Dec 20 03:08:41 2024  
 Response via : Initial Calibration

Compound	R.T.	QIon	Response	Conc	Units	Dev(Min)
Internal Standards						
1) 1,4-Difluorobenzene	8.837	114	552072	25.000	ug/L	0.00
28) Chlorobenzene-d5	11.629	117	461500	25.000	ug/L	0.00
58) 1,4-Dichlorobenzene-d4	13.550	152	242742	25.000	ug/L	0.00
System Monitoring Compounds						
4) Vinyl Chloride-d3	2.363	65	184134	22.167	ug/L	0.00
Spiked Amount	25.000	Range 30 - 150	Recovery =	88.680%		
7) Chloroethane-d5	2.899	69	154957	25.218	ug/L	0.00
Spiked Amount	25.000	Range 30 - 150	Recovery =	100.880%		
11) 1,1-Dichloroethene-d2	4.015	65	81569	20.702	ug/L	0.00
Spiked Amount	25.000	Range 45 - 110	Recovery =	82.800%		
21) 2-Butanone-d5	7.100	46	86182	55.092	ug/L	0.00
Spiked Amount	50.000	Range 20 - 135	Recovery =	110.180%		
24) Chloroform-d	7.648	84	352355	23.294	ug/L	0.00
Spiked Amount	25.000	Range 40 - 150	Recovery =	93.160%		
26) 1,2-Dichloroethane-d4	8.301	65	186921	24.606	ug/L	0.00
Spiked Amount	25.000	Range 70 - 130	Recovery =	98.440%		
32) Benzene-d6	8.270	84	687388	23.239	ug/L	0.00
Spiked Amount	25.000	Range 20 - 135	Recovery =	92.960%		
36) 1,2-Dichloropropane-d6	9.270	67	202783	23.522	ug/L	0.00
Spiked Amount	25.000	Range 70 - 120	Recovery =	94.080%		
41) Toluene-d8	10.319	98	628951	22.856	ug/L	0.00
Spiked Amount	25.000	Range 30 - 130	Recovery =	91.440%		
43) trans-1,3-Dichloroprop...	10.575	79	86121	21.666	ug/L	0.00
Spiked Amount	25.000	Range 30 - 135	Recovery =	86.680%		
47) 2-Hexanone-d5	10.922	63	65036	56.097	ug/L	0.00
Spiked Amount	50.000	Range 20 - 135	Recovery =	112.200%		
56) 1,1,2,2-Tetrachloroeth...	12.684	84	159005	29.376	ug/L	0.00
Spiked Amount	25.000	Range 45 - 120	Recovery =	117.520%		
66) 1,2-Dichlorobenzene-d4	13.848	152	203684	22.602	ug/L	0.00
Spiked Amount	25.000	Range 75 - 120	Recovery =	90.400%		
Target Compounds						
2) Dichlorodifluoromethane	2.015	85	107873	21.620	ug/L	95
3) Chloromethane	2.229	50	167546	29.891	ug/L	96
5) Vinyl chloride	2.375	62	202565	26.077	ug/L	96
6) Bromomethane	2.789	94	133843	28.026	ug/L	99
8) Chloroethane	2.936	64	129414	28.014	ug/L	97
9) Trichlorofluoromethane	3.265	101	259413	31.348	ug/L	98
10) 1,1,2-Trichloro-1,2,2-...	4.070	101	171092	25.604	ug/L	92
12) 1,1-Dichloroethene	4.033	96	167115	24.692	ug/L	97
13) Acetone	4.173	43	118593	54.436	ug/L #	100
14) Carbon disulfide	4.381	76	452771	20.513	ug/L	100
15) Methyl Acetate	4.692	43	67066	27.104	ug/L	98
16) Methylene chloride	4.917	84	169518	24.404	ug/L	95
17) trans-1,2-Dichloroethene	5.423	96	178372	24.450	ug/L	99
18) Methyl tert-butyl Ether	5.429	73	308271	25.276	ug/L	99
19) 1,1-Dichloroethane	6.216	63	334943	24.569	ug/L	99
20) cis-1,2-Dichloroethene	7.167	96	197523	25.025	ug/L	98
22) 2-Butanone	7.191	43	134991	51.139	ug/L	98
23) Bromochloromethane	7.508	128	80502	25.573	ug/L	93
25) Chloroform	7.673	83	346957	25.787	ug/L	100

Data Path : Z:\voasrv\HPCHEM1\MSVOA\_W\Data\VW122024\  
 Data File : VW031414.D  
 Acq On : 20 Dec 2024 09:08  
 Operator : SY/MD  
 Sample : VSTDCCC025  
 Misc : 5.00g/10mL/MSVOA\_W/SOIL  
 ALS Vial : 2 Sample Multiplier: 1

Instrument :  
 MSVOA\_W  
 ClientSampleId :

Quant Time: Dec 20 21:55:50 2024  
 Quant Method : Z:\voasrv\HPCHEM1\MSVOA\_W\Method\SFAMWLM121324SMA.M  
 Quant Title : SFAM01.0  
 QLast Update : Fri Dec 20 03:08:41 2024  
 Response via : Initial Calibration

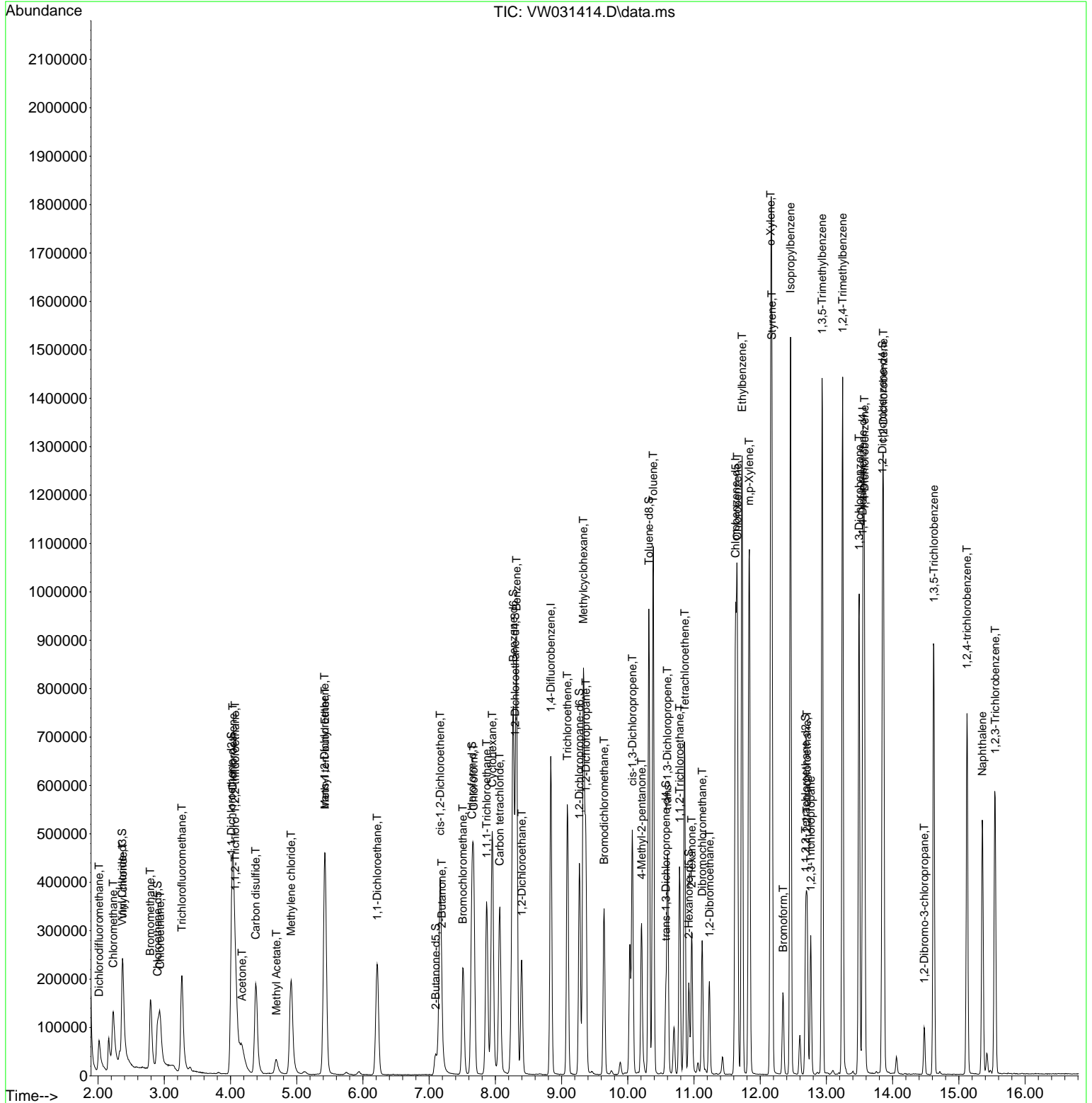
Compound	R.T.	QIon	Response	Conc	Units	Dev(Min)
27) 1,2-Dichloroethane	8.398	62	222910	26.353	ug/L	98
29) Cyclohexane	7.953	56	302519	24.171	ug/L	98
30) 1,1,1-Trichloroethane	7.868	97	290850	24.383	ug/L	99
31) Carbon tetrachloride	8.063	117	258980	24.370	ug/L	99
33) Benzene	8.319	78	735033	25.773	ug/L	100
34) Trichloroethene	9.087	95	197669	24.550	ug/L	91
35) Methylcyclohexane	9.331	83	346738	24.728	ug/L	99
37) 1,2-Dichloropropane	9.368	63	181871	25.563	ug/L	99
38) Bromodichloromethane	9.642	83	231267	25.004	ug/L	98
39) cis-1,3-Dichloropropene	10.069	75	294590	24.503	ug/L	99
40) 4-Methyl-2-pentanone	10.209	43	206411	54.684	ug/L	98
42) Toluene	10.386	91	792260	25.515	ug/L	100
44) trans-1,3-Dichloropropene	10.599	75	240885	24.538	ug/L	95
45) 1,1,2-Trichloroethane	10.782	97	133578	28.227	ug/L	91
46) Tetrachloroethene	10.861	164	154450	26.188	ug/L	83
48) 2-Hexanone	10.965	43	187223	58.319	ug/L	98
49) Dibromochloromethane	11.123	129	142105	25.333	ug/L	95
50) 1,2-Dibromoethane	11.233	107	128535	28.672	ug/L	99
51) Chlorobenzene	11.654	112	512876	26.344	ug/L	99
52) Ethylbenzene	11.727	91	916217	25.460	ug/L	97
53) m,p-Xylene	11.837	106	351454	25.654	ug/L	92
54) o-Xylene	12.160	106	327962	25.401	ug/L	92
55) Styrene	12.178	104	564782	26.298	ug/L	99
57) 1,1,2,2-Tetrachloroethane	12.708	83	156827	30.742	ug/L	99
59) Bromoform	12.349	173	76372	22.396	ug/L	99
60) Isopropylbenzene	12.458	105	937265	23.594	ug/L	98
61) 1,2,3-Trichloropropane	12.763	75	114784	27.634	ug/L	99
62) 1,3,5-Trimethylbenzene	12.934	105	784216	23.285	ug/L	97
63) 1,2,4-Trimethylbenzene	13.245	105	763114	23.444	ug/L	96
64) 1,3-Dichlorobenzene	13.495	146	391853	24.347	ug/L	95
65) 1,4-Dichlorobenzene	13.574	146	390870	24.511	ug/L	87
67) 1,2-Dichlorobenzene	13.861	146	349250	25.185	ug/L	89
68) 1,2-Dibromo-3-chloropr...	14.476	75	24979	23.697	ug/L	94
69) 1,3,5-Trichlorobenzene	14.623	180	268145	23.789	ug/L	99
70) 1,2,4-trichlorobenzene	15.123	180	213692	22.790	ug/L	96
71) Naphthalene	15.354	128	449268	27.330	ug/L	99
72) 1,2,3-Trichlorobenzene	15.549	180	195520	25.881	ug/L	99

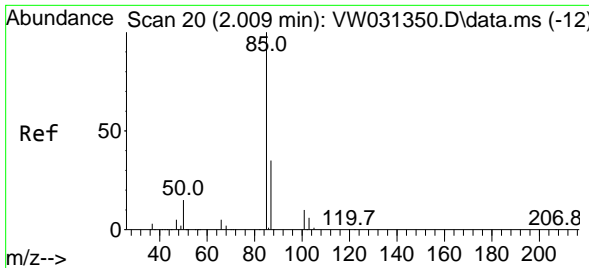
(#) = qualifier out of range (m) = manual integration (+) = signals summed

Data Path : Z:\voasrv\HPCHEM1\MSVOA\_W\Data\VW122024\  
 Data File : VW031414.D  
 Acq On : 20 Dec 2024 09:08  
 Operator : SY/MD  
 Sample : VSTDC0025  
 Misc : 5.00g/10mL/MSVOA\_W/SOIL  
 ALS Vial : 2 Sample Multiplier: 1

Instrument :  
 MSVOA\_W  
 ClientSampleId :

Quant Time: Dec 20 21:55:50 2024  
 Quant Method : Z:\voasrv\HPCHEM1\MSVOA\_W\Method\SFAMWLM121324SMA.M  
 Quant Title : SFAM01.0  
 QLast Update : Fri Dec 20 03:08:41 2024  
 Response via : Initial Calibration

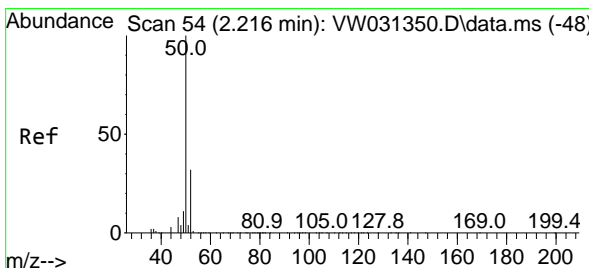
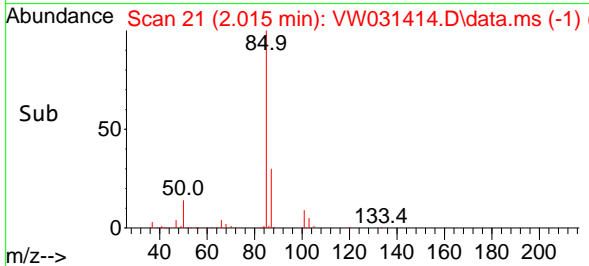
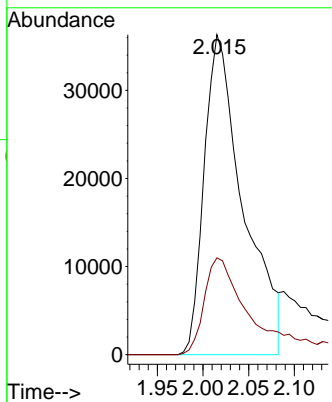
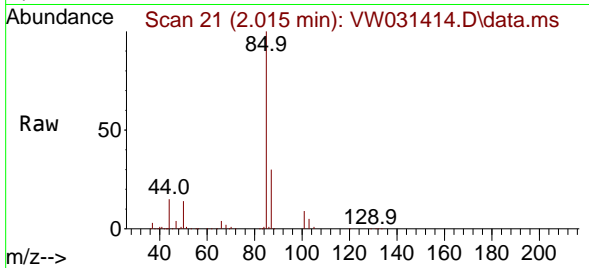




#2  
 Dichlorodifluoromethane  
 Concen: 21.620 ug/L  
 RT: 2.015 min Scan# 21  
 Delta R.T. 0.000 min  
 Lab File: VW031414.D  
 Acq: 20 Dec 2024 09:08

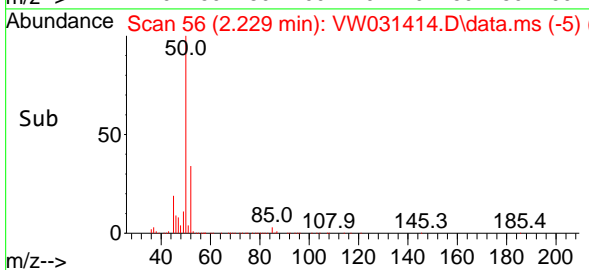
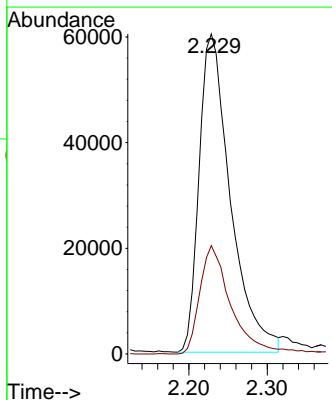
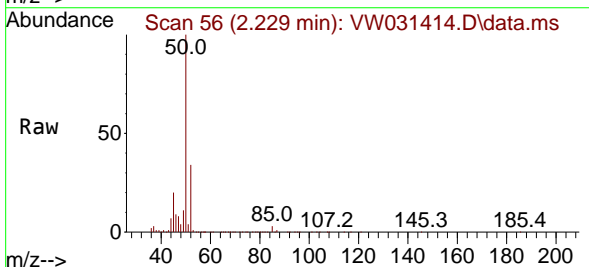
Instrument :  
 MSVOA\_W  
 ClientSampleId :

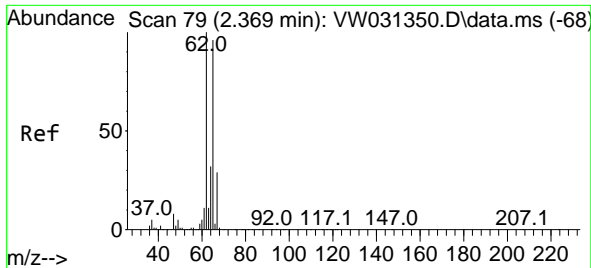
Tgt Ion: 85 Resp: 107873  
 Ion Ratio Lower Upper  
 85 100  
 87 33.8 24.9 37.3



#3  
 Chloromethane  
 Concen: 29.891 ug/L  
 RT: 2.229 min Scan# 56  
 Delta R.T. 0.013 min  
 Lab File: VW031414.D  
 Acq: 20 Dec 2024 09:08

Tgt Ion: 50 Resp: 167546  
 Ion Ratio Lower Upper  
 50 100  
 52 33.9 22.0 41.0

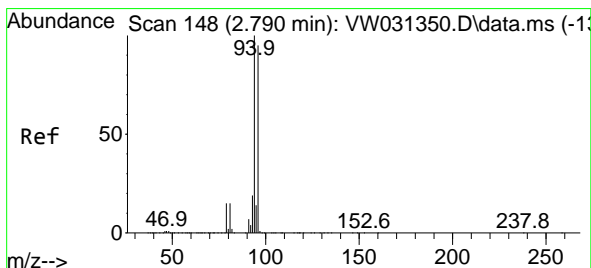
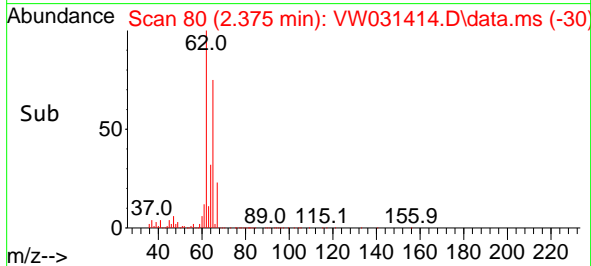
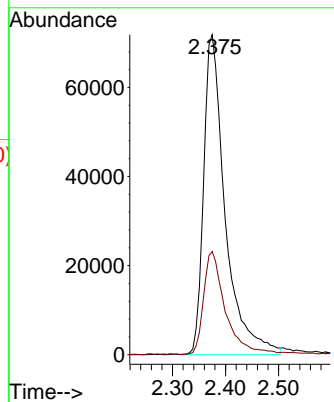
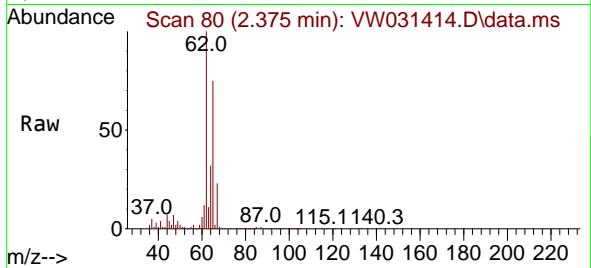




#5  
 Vinyl chloride  
 Concen: 26.077 ug/L  
 RT: 2.375 min Scan# 80  
 Delta R.T. 0.006 min  
 Lab File: VW031414.D  
 Acq: 20 Dec 2024 09:08

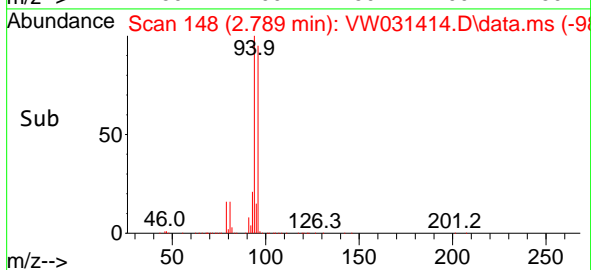
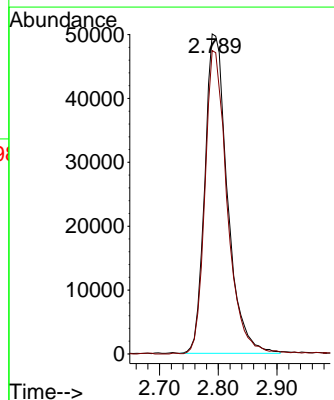
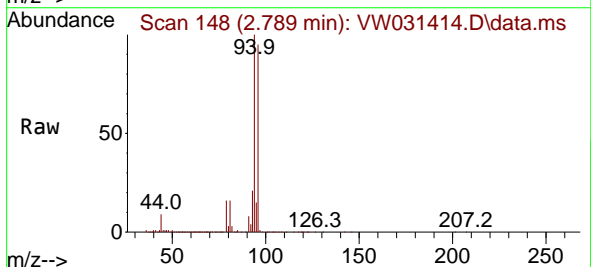
Instrument :  
 MSVOA\_W  
 ClientSampleId :

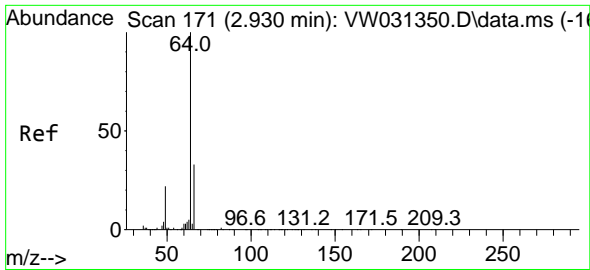
Tgt Ion: 62 Resp: 202565  
 Ion Ratio Lower Upper  
 62 100  
 64 32.2 24.1 44.8



#6  
 Bromomethane  
 Concen: 28.026 ug/L  
 RT: 2.789 min Scan# 148  
 Delta R.T. 0.006 min  
 Lab File: VW031414.D  
 Acq: 20 Dec 2024 09:08

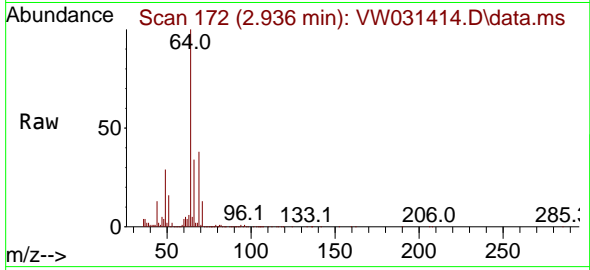
Tgt Ion: 94 Resp: 133843  
 Ion Ratio Lower Upper  
 94 100  
 96 94.8 65.6 121.8



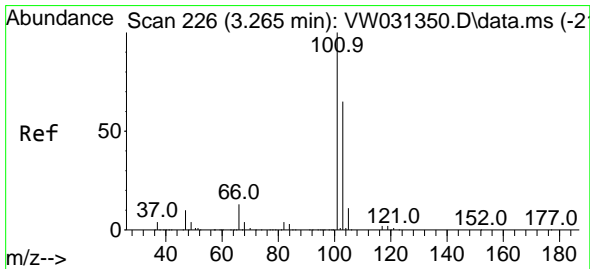
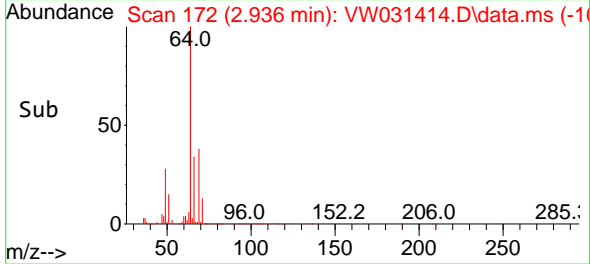
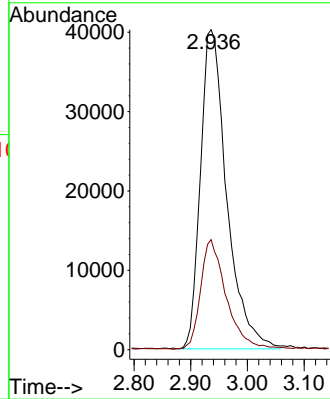


#8  
 Chloroethane  
 Concen: 28.014 ug/L  
 RT: 2.936 min Scan# 171  
 Delta R.T. 0.006 min  
 Lab File: VW031414.D  
 Acq: 20 Dec 2024 09:08

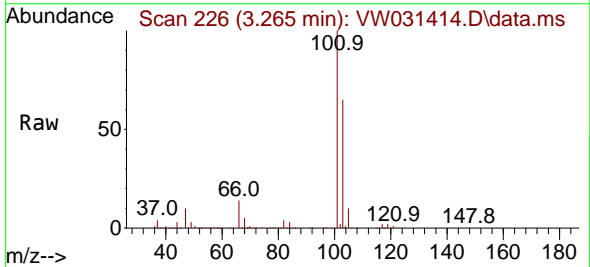
Instrument :  
 MSVOA\_W  
 ClientSampleId :



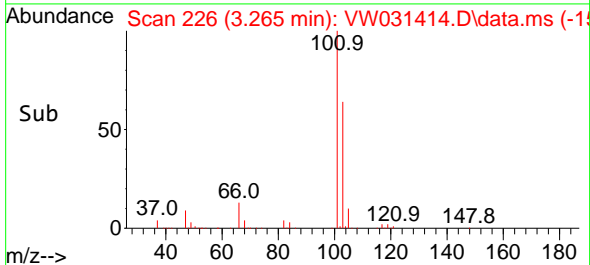
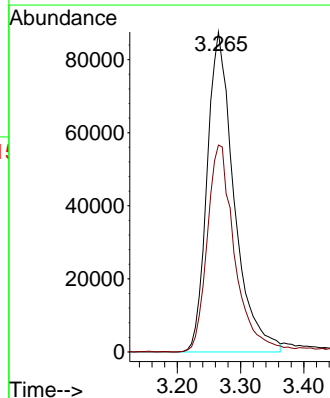
Tgt Ion: 64 Resp: 129414  
 Ion Ratio Lower Upper  
 64 100  
 66 34.4 22.7 42.3

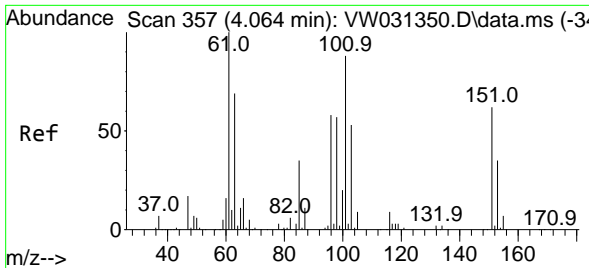


#9  
 Trichlorofluoromethane  
 Concen: 31.348 ug/L  
 RT: 3.265 min Scan# 226  
 Delta R.T. 0.006 min  
 Lab File: VW031414.D  
 Acq: 20 Dec 2024 09:08



Tgt Ion: 101 Resp: 259413  
 Ion Ratio Lower Upper  
 101 100  
 103 66.1 51.6 77.4

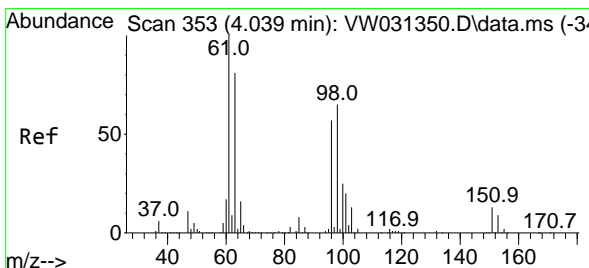
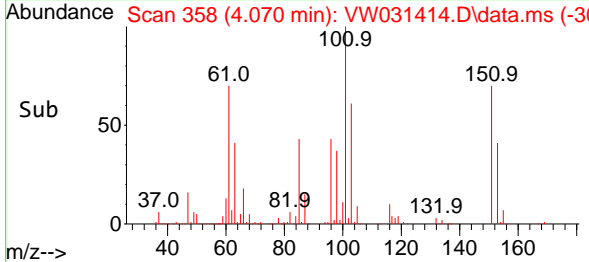
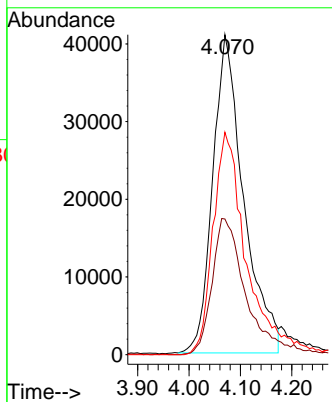
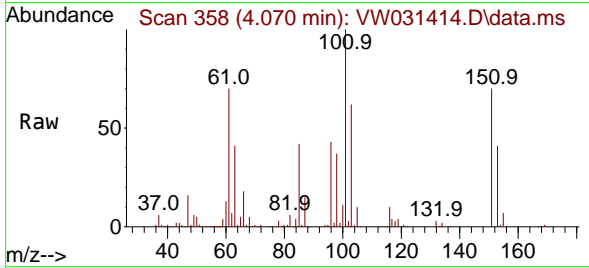




#10  
 1,1,2-Trichloro-1,2,2-trifluoroethane  
 Concen: 25.604 ug/L  
 RT: 4.070 min Scan# 358  
 Delta R.T. 0.000 min  
 Lab File: VW031414.D  
 Acq: 20 Dec 2024 09:08

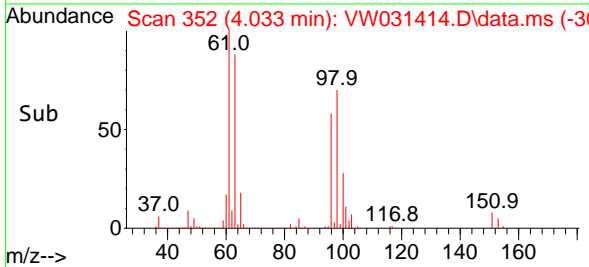
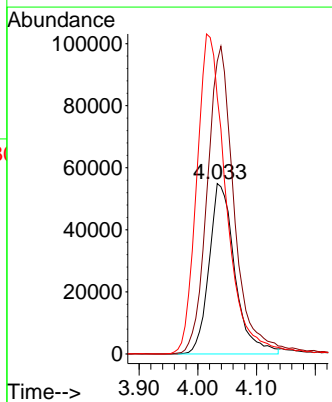
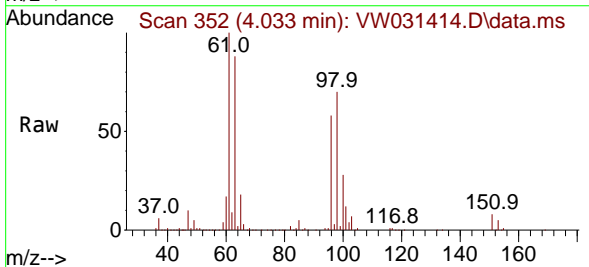
Instrument :  
 MSVOA\_W  
 ClientSampled :

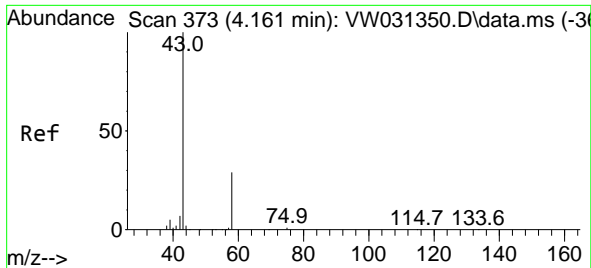
Tgt Ion	Resp	Lower	Upper
101	171092		
101	100		
85	45.9	33.0	49.4
151	75.6	54.8	82.2



#12  
 1,1-Dichloroethene  
 Concen: 24.692 ug/L  
 RT: 4.033 min Scan# 352  
 Delta R.T. 0.000 min  
 Lab File: VW031414.D  
 Acq: 20 Dec 2024 09:08

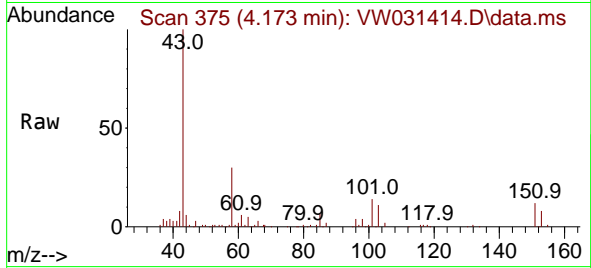
Tgt Ion	Resp	Lower	Upper
96	167115		
96	100		
61	171.8	125.3	232.7
63	150.7	104.6	194.2



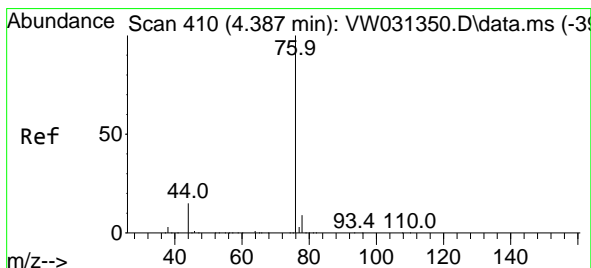
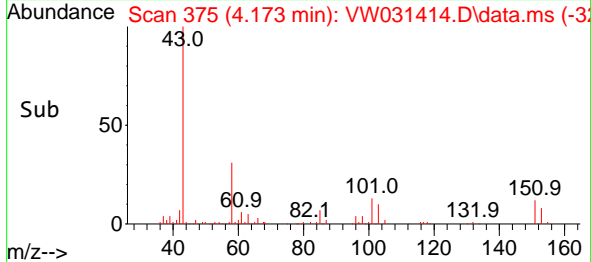
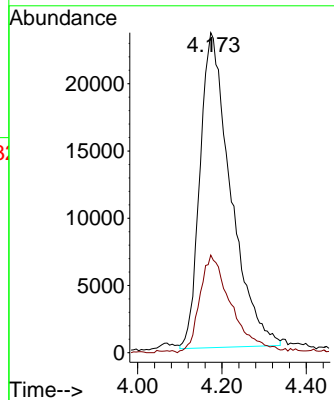


#13  
 Acetone  
 Concen: 54.436 ug/L  
 RT: 4.173 min Scan# 31  
 Delta R.T. 0.013 min  
 Lab File: VW031414.D  
 Acq: 20 Dec 2024 09:08

Instrument :  
 MSVOA\_W  
 ClientSampleId :

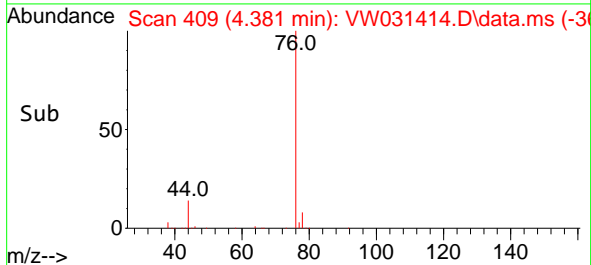
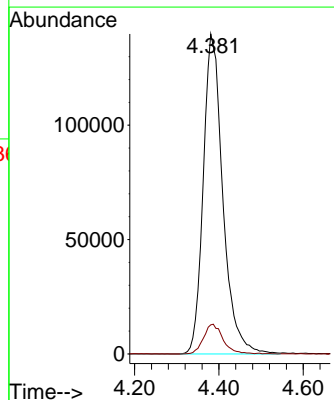
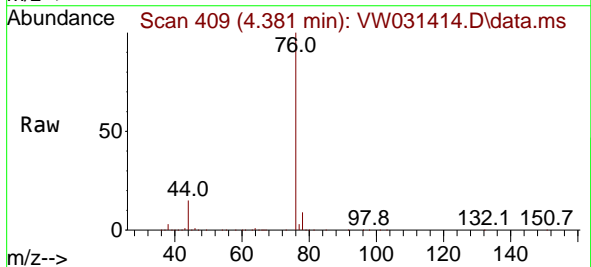


Tgt Ion: 43 Resp: 118593  
 Ion Ratio Lower Upper  
 43 100  
 58 31.5 0.0 0.0#

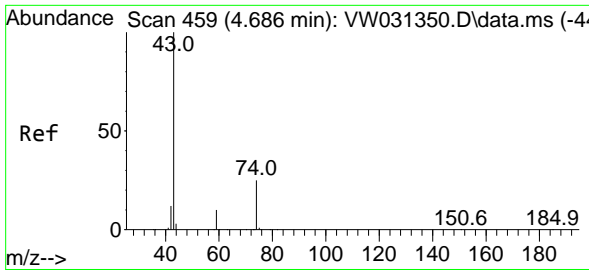


#14  
 Carbon disulfide  
 Concen: 20.513 ug/L  
 RT: 4.381 min Scan# 409  
 Delta R.T. 0.000 min  
 Lab File: VW031414.D  
 Acq: 20 Dec 2024 09:08

Tgt Ion: 76 Resp: 452771  
 Ion Ratio Lower Upper  
 76 100  
 78 9.1 7.3 10.9

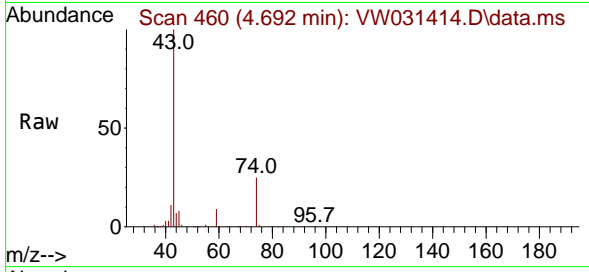




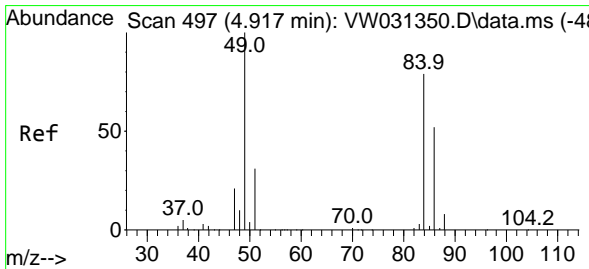
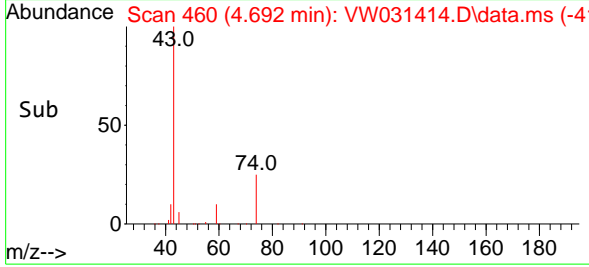
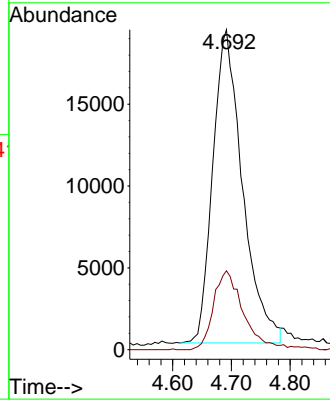


#15  
 Methyl Acetate  
 Concen: 27.104 ug/L  
 RT: 4.692 min Scan# 460  
 Delta R.T. 0.006 min  
 Lab File: VW031414.D  
 Acq: 20 Dec 2024 09:08

Instrument : MSVOA\_W  
 Client Sampled :

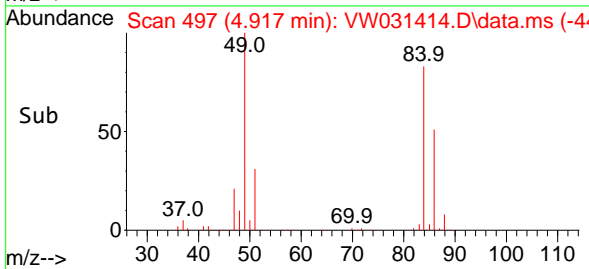
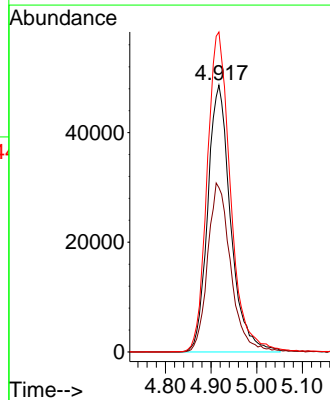
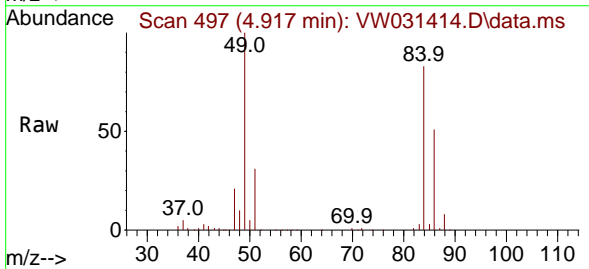


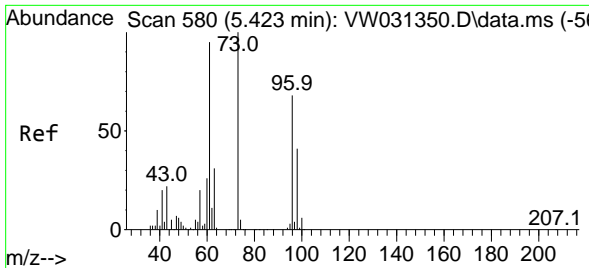
Tgt Ion: 43 Resp: 67066  
 Ion Ratio Lower Upper  
 43 100  
 74 24.7 18.9 28.3



#16  
 Methylene chloride  
 Concen: 24.404 ug/L  
 RT: 4.917 min Scan# 497  
 Delta R.T. 0.000 min  
 Lab File: VW031414.D  
 Acq: 20 Dec 2024 09:08

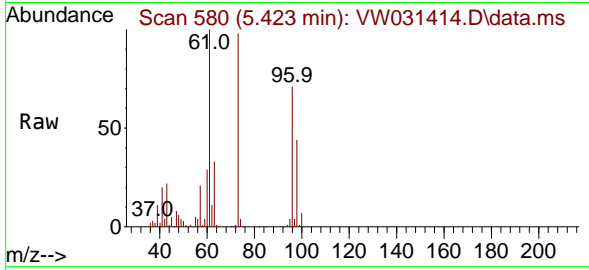
Tgt Ion: 84 Resp: 169518  
 Ion Ratio Lower Upper  
 84 100  
 86 61.6 44.7 82.9  
 49 120.0 88.3 164.1



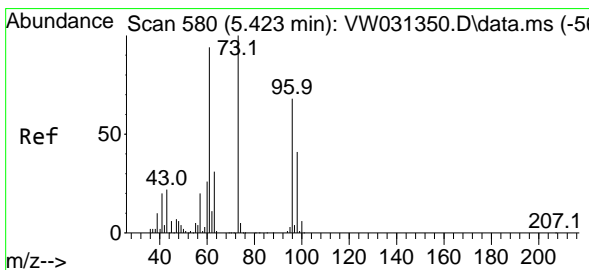
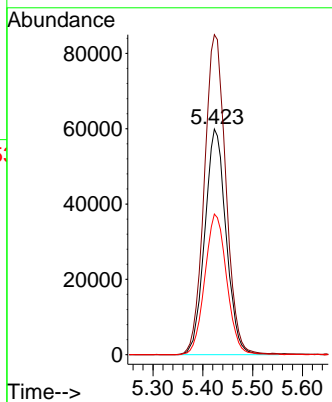
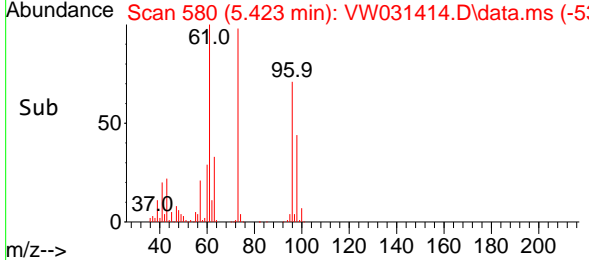


#17  
 trans-1,2-Dichloroethene  
 Concen: 24.450 ug/L  
 RT: 5.423 min Scan# 580  
 Delta R.T. 0.000 min  
 Lab File: VW031414.D  
 Acq: 20 Dec 2024 09:08

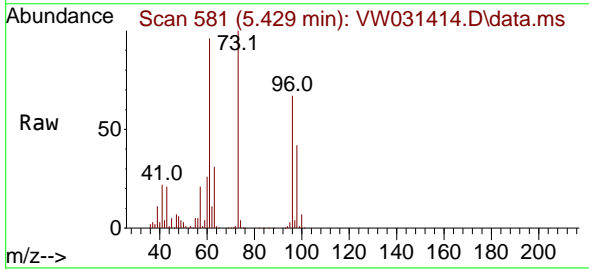
Instrument :  
 MSVOA\_W  
 ClientSampleId :



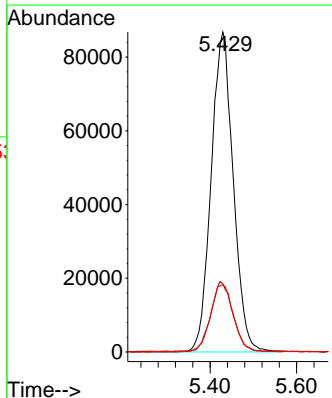
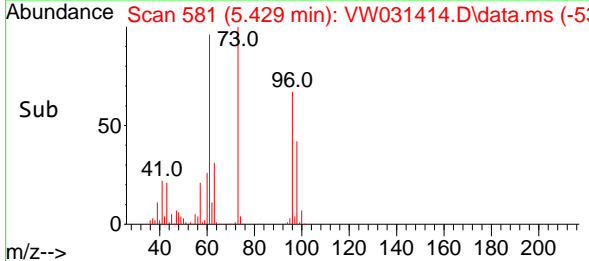
Tgt Ion: 96 Resp: 178372  
 Ion Ratio Lower Upper  
 96 100  
 61 141.8 100.7 187.1  
 98 62.3 43.8 81.3

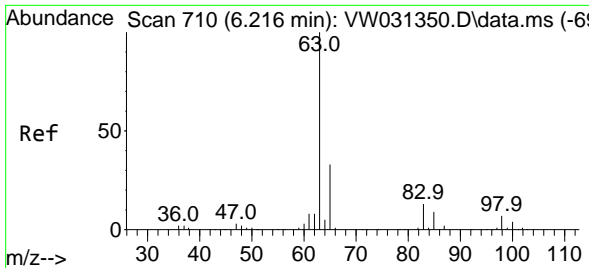


#18  
 Methyl tert-butyl Ether  
 Concen: 25.276 ug/L  
 RT: 5.429 min Scan# 581  
 Delta R.T. 0.006 min  
 Lab File: VW031414.D  
 Acq: 20 Dec 2024 09:08



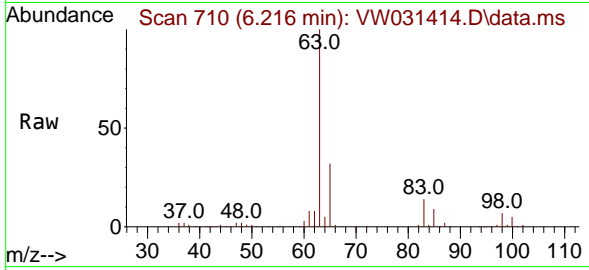
Tgt Ion: 73 Resp: 308271  
 Ion Ratio Lower Upper  
 73 100  
 43 22.0 17.9 26.9  
 57 21.7 17.9 26.9





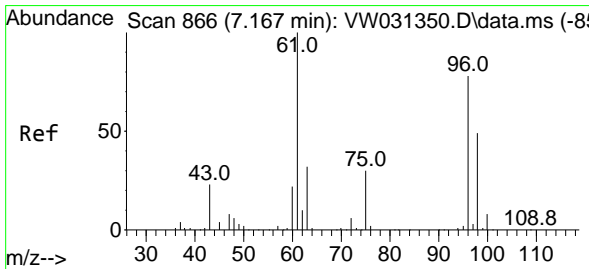
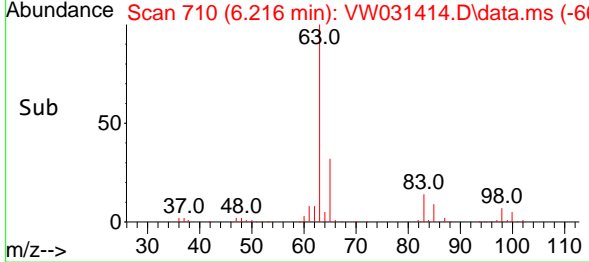
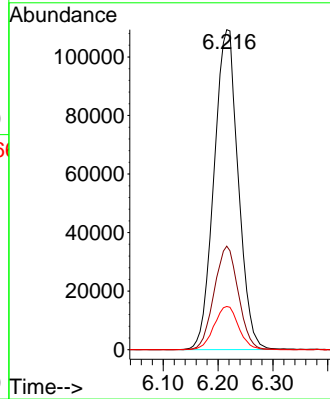
#19  
 1,1-Dichloroethane  
 Concen: 24.569 ug/L  
 RT: 6.216 min Scan# 710  
 Delta R.T. 0.000 min  
 Lab File: VW031414.D  
 Acq: 20 Dec 2024 09:08

Instrument :  
 MSVOA\_W  
 ClientSampleId :



Tgt Ion: 63 Resp: 334943

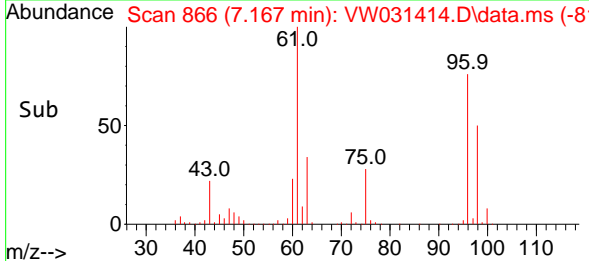
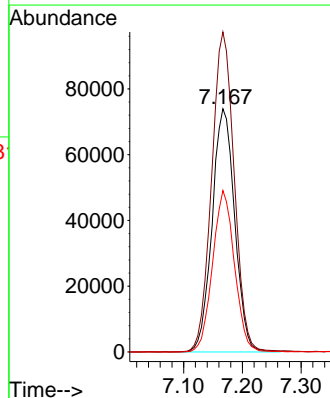
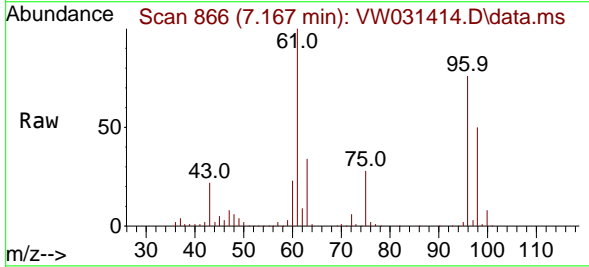
Ion	Ratio	Lower	Upper
63	100		
65	32.3	21.9	40.7
83	13.5	9.3	17.3

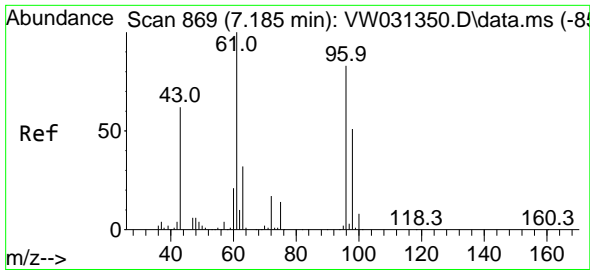


#20  
 cis-1,2-Dichloroethene  
 Concen: 25.025 ug/L  
 RT: 7.167 min Scan# 866  
 Delta R.T. 0.000 min  
 Lab File: VW031414.D  
 Acq: 20 Dec 2024 09:08

Tgt Ion: 96 Resp: 197523

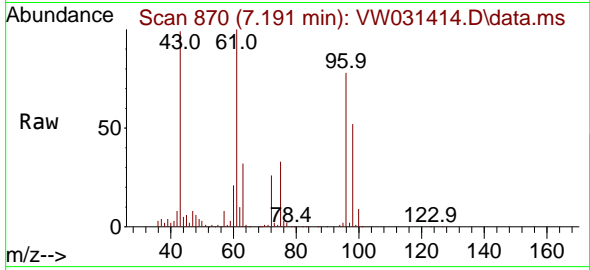
Ion	Ratio	Lower	Upper
96	100		
61	131.6	92.2	171.2
98	66.4	43.7	81.1



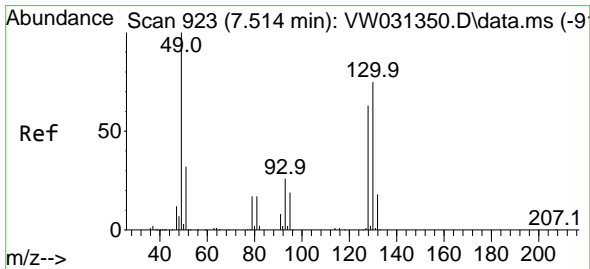
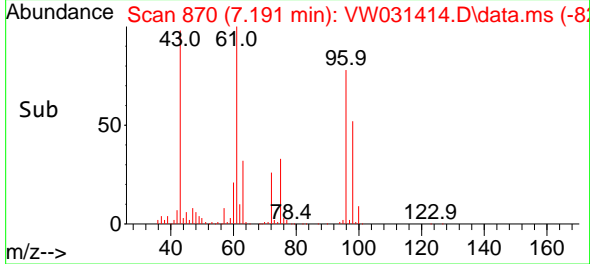
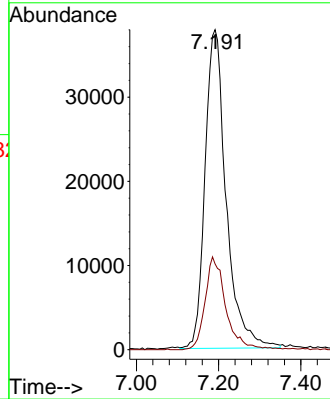


#22  
 2-Butanone  
 Concen: 51.139 ug/L  
 RT: 7.191 min Scan# 81  
 Delta R.T. 0.006 min  
 Lab File: VW031414.D  
 Acq: 20 Dec 2024 09:08

Instrument :  
 MSVOA\_W  
 ClientSampleId :

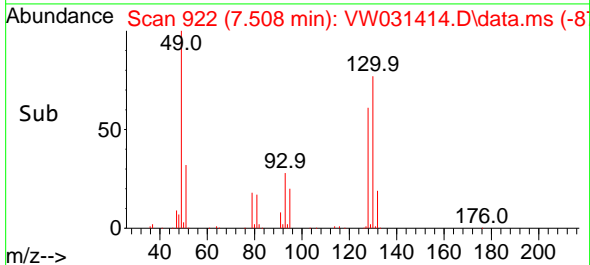
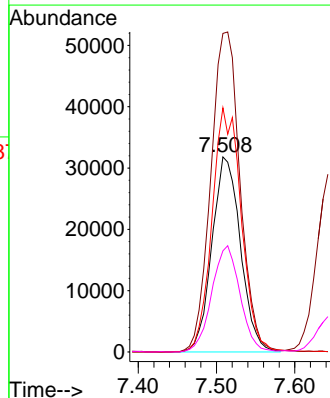
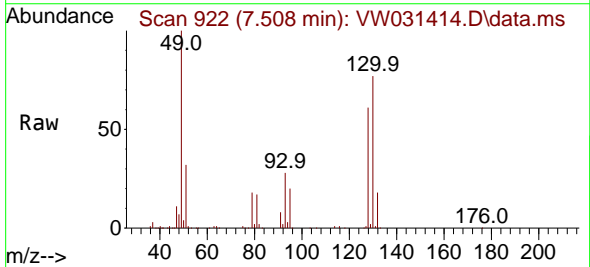


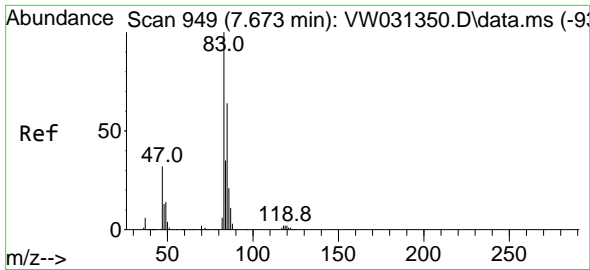
Tgt Ion: 43 Resp: 134991  
 Ion Ratio Lower Upper  
 43 100  
 72 27.5 13.3 39.8



#23  
 Bromochloromethane  
 Concen: 25.573 ug/L  
 RT: 7.508 min Scan# 922  
 Delta R.T. -0.006 min  
 Lab File: VW031414.D  
 Acq: 20 Dec 2024 09:08

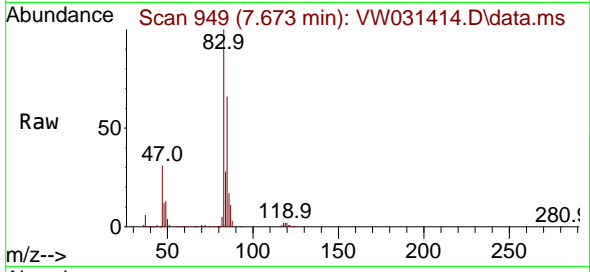
Tgt Ion: 128 Resp: 80502  
 Ion Ratio Lower Upper  
 128 100  
 49 163.4 123.7 229.7  
 130 125.3 90.3 167.7  
 51 51.9 46.1 69.1



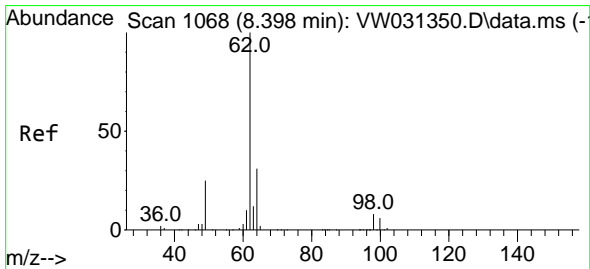
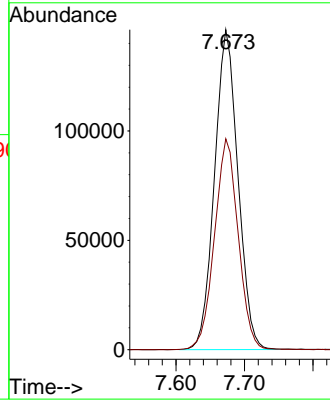
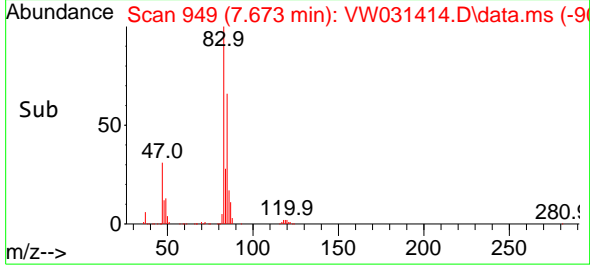


#25  
 Chloroform  
 Concen: 25.787 ug/L  
 RT: 7.673 min Scan# 949  
 Delta R.T. 0.000 min  
 Lab File: VW031414.D  
 Acq: 20 Dec 2024 09:08

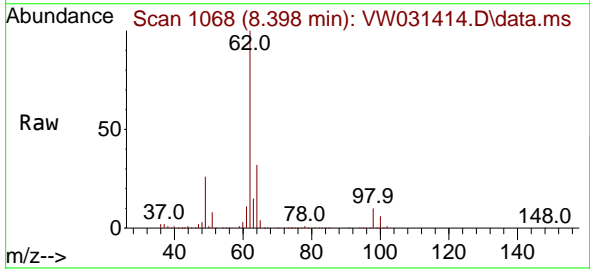
Instrument :  
 MSVOA\_W  
 ClientSampleId :



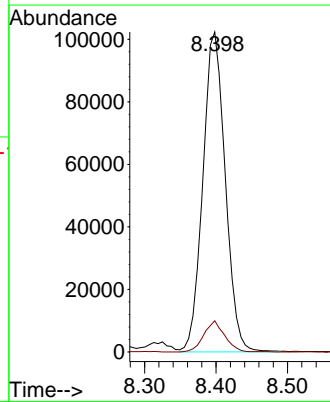
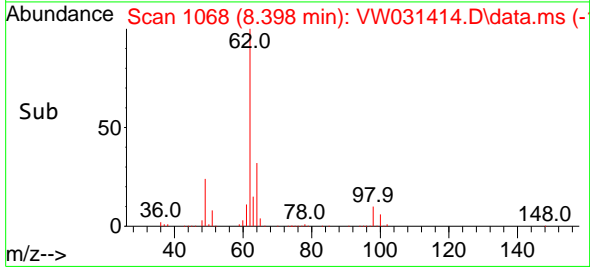
Tgt Ion: 83 Resp: 346957  
 Ion Ratio Lower Upper  
 83 100  
 85 65.9 46.1 85.5

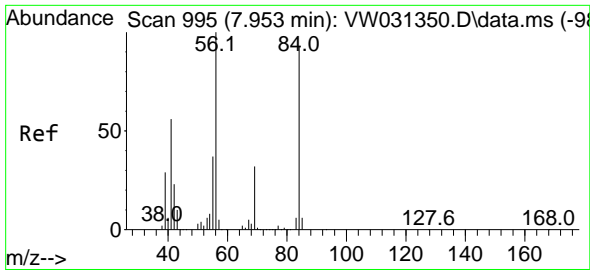


#27  
 1,2-Dichloroethane  
 Concen: 26.353 ug/L  
 RT: 8.398 min Scan# 1068  
 Delta R.T. 0.000 min  
 Lab File: VW031414.D  
 Acq: 20 Dec 2024 09:08



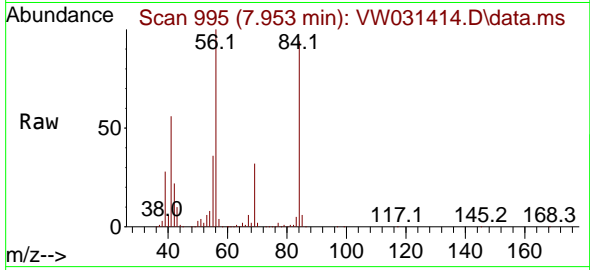
Tgt Ion: 62 Resp: 222910  
 Ion Ratio Lower Upper  
 62 100  
 98 9.8 7.2 10.8





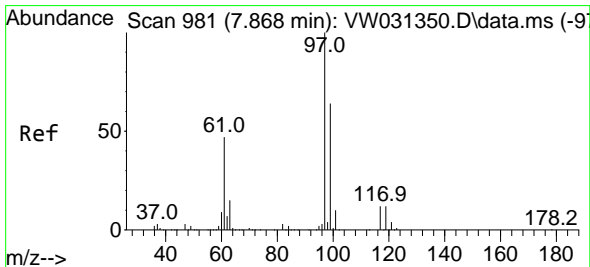
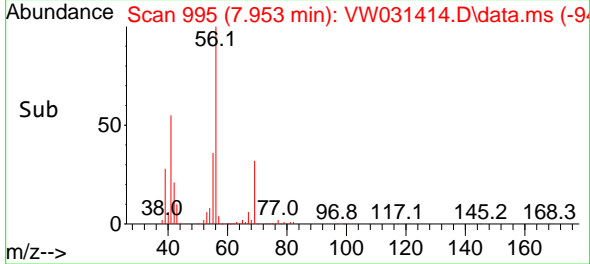
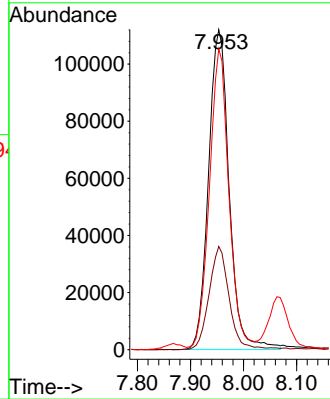
#29  
 Cyclohexane  
 Concen: 24.171 ug/L  
 RT: 7.953 min Scan# 995  
 Delta R.T. 0.000 min  
 Lab File: VW031414.D  
 Acq: 20 Dec 2024 09:08

Instrument :  
 MSVOA\_W  
 ClientSampleId :



Tgt Ion: 56 Resp: 302519

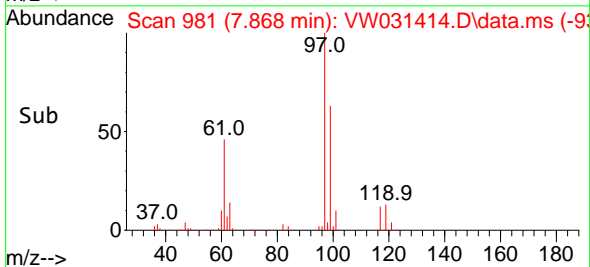
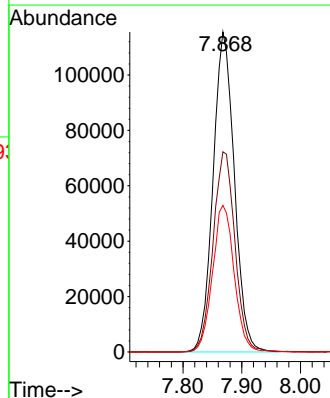
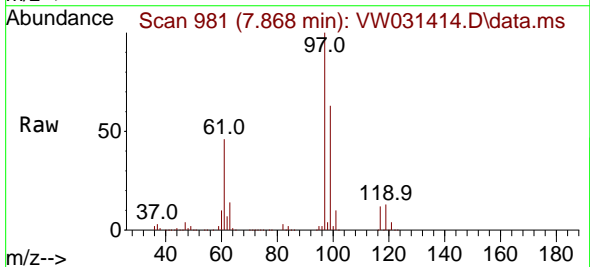
Ion	Ratio	Lower	Upper
56	100		
69	30.8	25.0	37.4
84	88.8	68.9	103.3

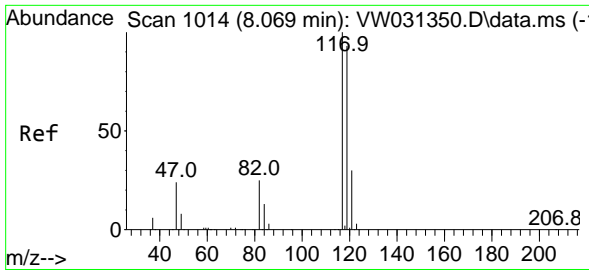


#30  
 1,1,1-Trichloroethane  
 Concen: 24.383 ug/L  
 RT: 7.868 min Scan# 981  
 Delta R.T. -0.006 min  
 Lab File: VW031414.D  
 Acq: 20 Dec 2024 09:08

Tgt Ion: 97 Resp: 290850

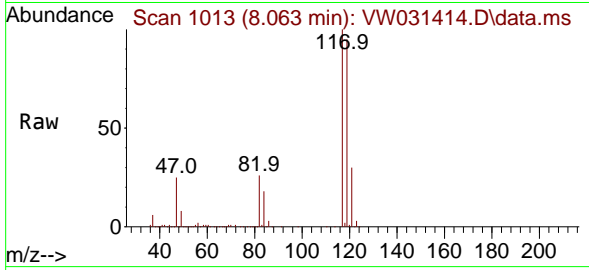
Ion	Ratio	Lower	Upper
97	100		
99	64.4	51.1	76.7
61	46.5	36.3	54.5



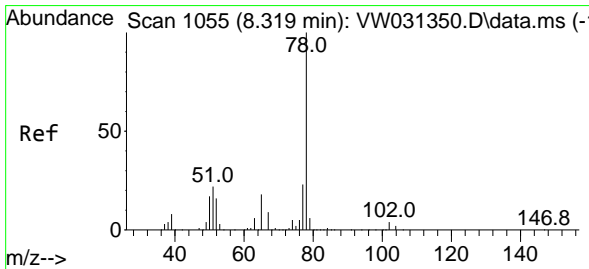
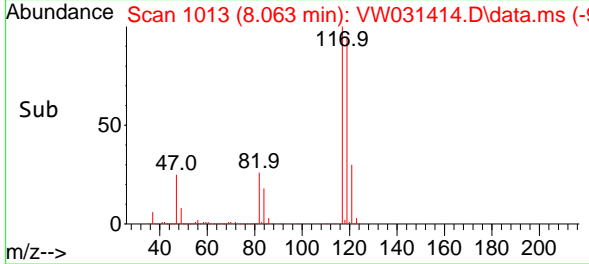
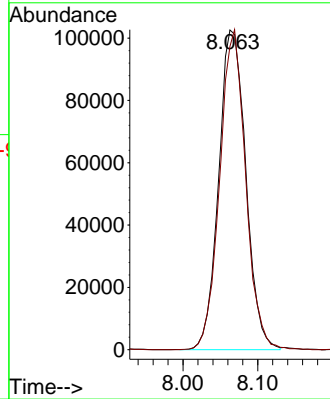


#31  
 Carbon tetrachloride  
 Concen: 24.370 ug/L  
 RT: 8.063 min Scan# 1013  
 Delta R.T. -0.006 min  
 Lab File: VW031414.D  
 Acq: 20 Dec 2024 09:08

Instrument :  
 MSVOA\_W  
 ClientSampleId :

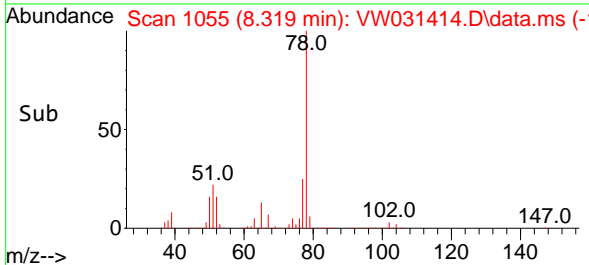
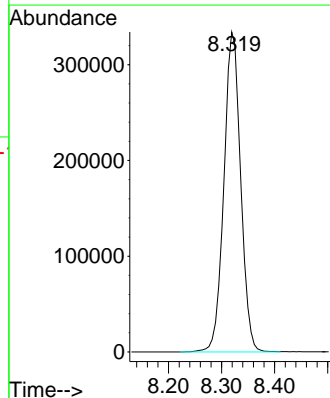
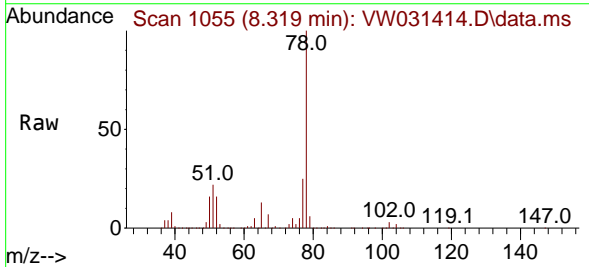


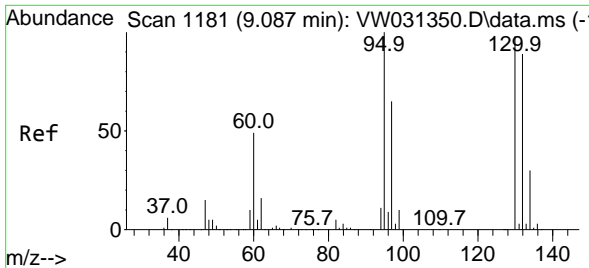
Tgt Ion:117 Resp: 258980  
 Ion Ratio Lower Upper  
 117 100  
 119 95.7 76.0 114.0



#33  
 Benzene  
 Concen: 25.773 ug/L  
 RT: 8.319 min Scan# 1055  
 Delta R.T. 0.000 min  
 Lab File: VW031414.D  
 Acq: 20 Dec 2024 09:08

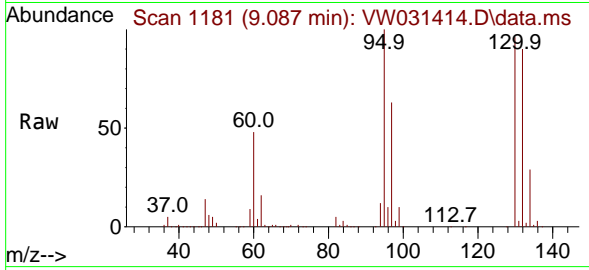
Tgt Ion: 78 Resp: 735033





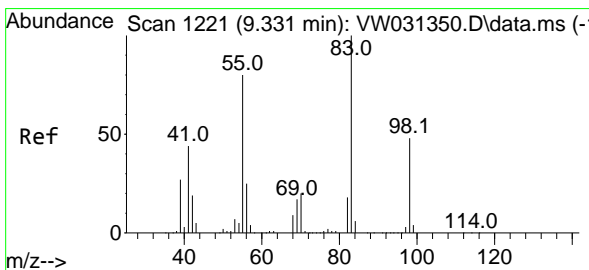
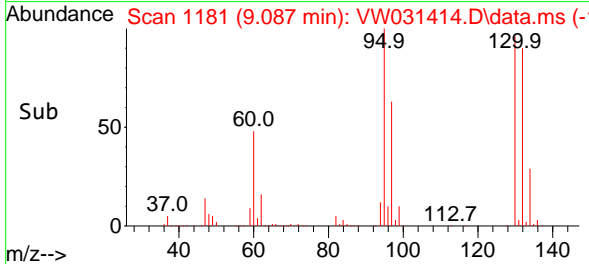
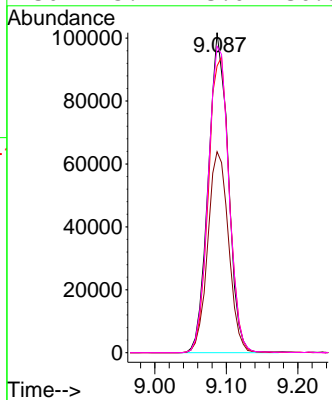
#34  
 Trichloroethene  
 Concen: 24.550 ug/L  
 RT: 9.087 min Scan# 1118  
 Delta R.T. 0.000 min  
 Lab File: VW031414.D  
 Acq: 20 Dec 2024 09:08

Instrument : MSVOA\_W  
 ClientSampleId :

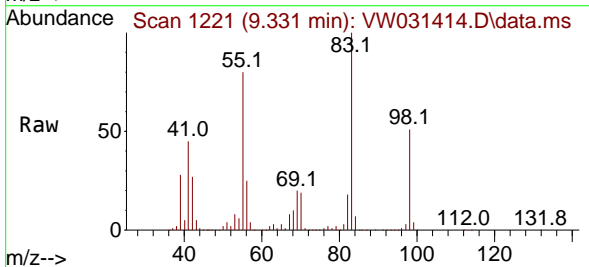


Tgt Ion: 95 Resp: 197669

Ion	Ratio	Lower	Upper
95	100		
97	62.8	46.5	86.3
132	89.6	70.3	130.5
130	95.7	73.6	136.8

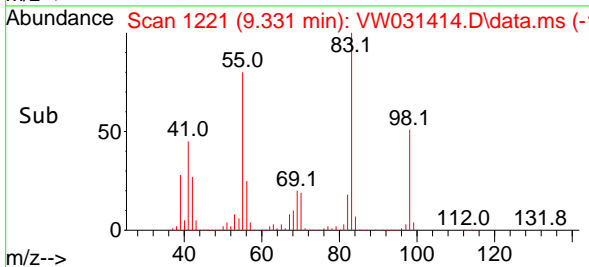
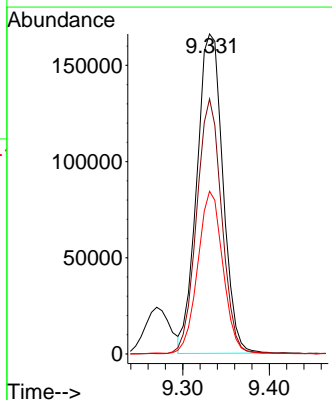


#35  
 Methylcyclohexane  
 Concen: 24.728 ug/L  
 RT: 9.331 min Scan# 1221  
 Delta R.T. 0.000 min  
 Lab File: VW031414.D  
 Acq: 20 Dec 2024 09:08

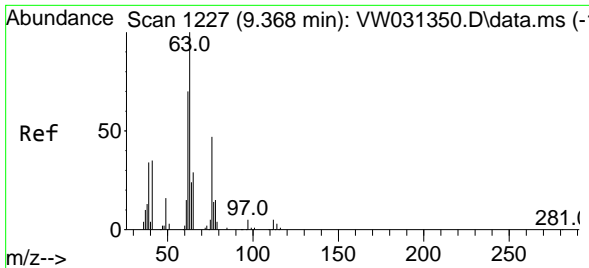


Tgt Ion: 83 Resp: 346738

Ion	Ratio	Lower	Upper
83	100		
55	76.6	62.6	93.8
98	49.4	39.8	59.6



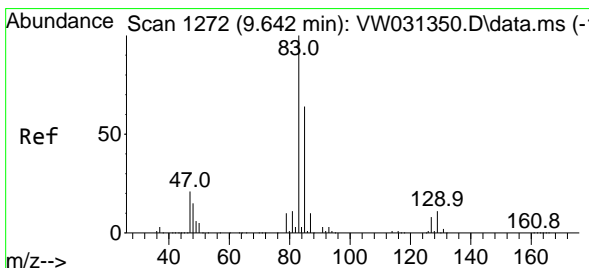
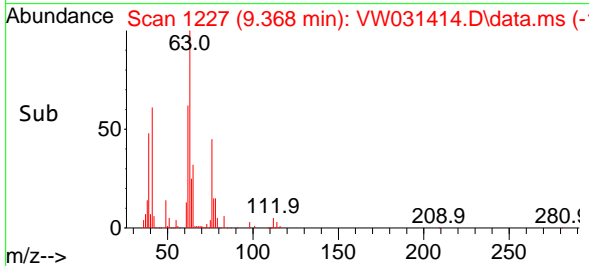
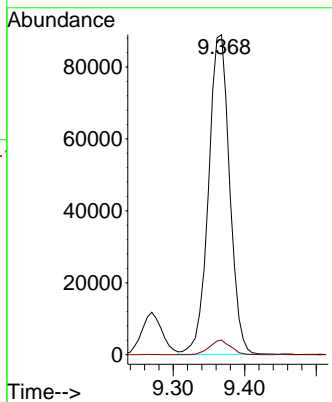
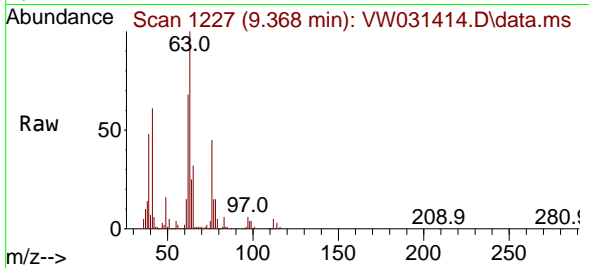




#37  
 1,2-Dichloropropane  
 Concen: 25.563 ug/L  
 RT: 9.368 min Scan# 111  
 Delta R.T. 0.000 min  
 Lab File: VW031414.D  
 Acq: 20 Dec 2024 09:08

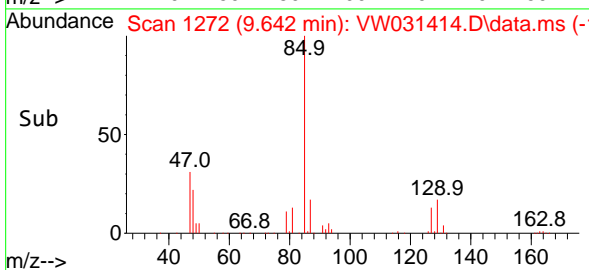
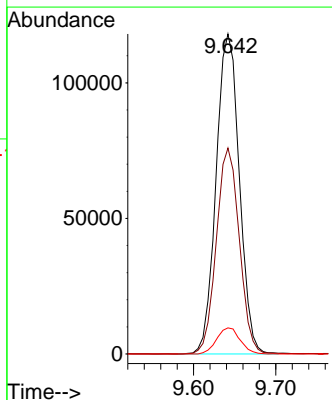
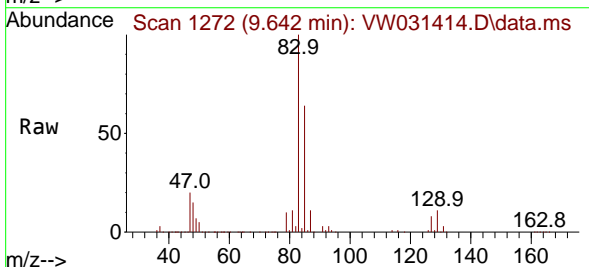
Instrument :  
 MSVOA\_W  
 ClientSampleId :

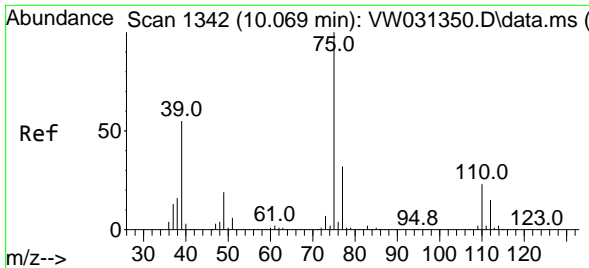
Tgt Ion: 63 Resp: 181871  
 Ion Ratio Lower Upper  
 63 100  
 112 4.5 3.8 5.8



#38  
 Bromodichloromethane  
 Concen: 25.004 ug/L  
 RT: 9.642 min Scan# 1272  
 Delta R.T. 0.000 min  
 Lab File: VW031414.D  
 Acq: 20 Dec 2024 09:08

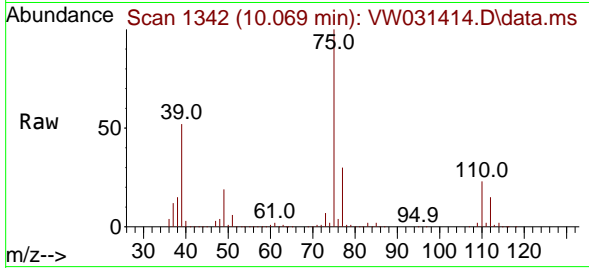
Tgt Ion: 83 Resp: 231267  
 Ion Ratio Lower Upper  
 83 100  
 85 64.4 46.5 86.5  
 127 8.2 6.2 9.4



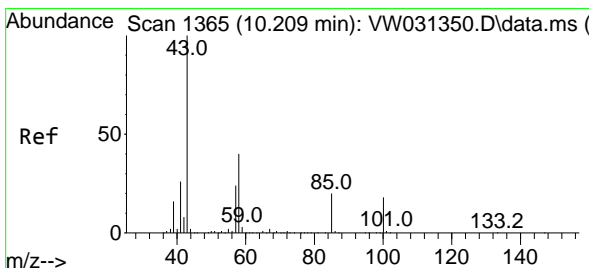
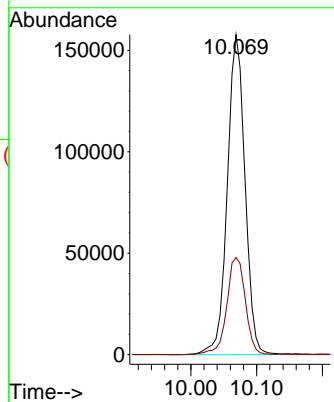
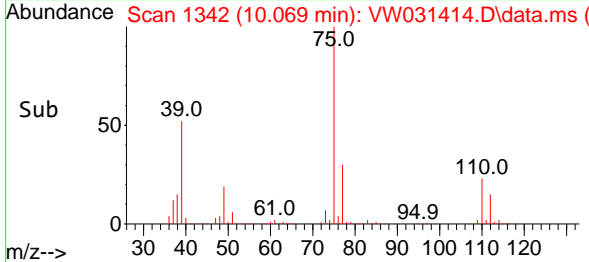


#39  
 cis-1,3-Dichloropropene  
 Concen: 24.503 ug/L  
 RT: 10.069 min Scan# 11  
 Delta R.T. 0.000 min  
 Lab File: VW031414.D  
 Acq: 20 Dec 2024 09:08

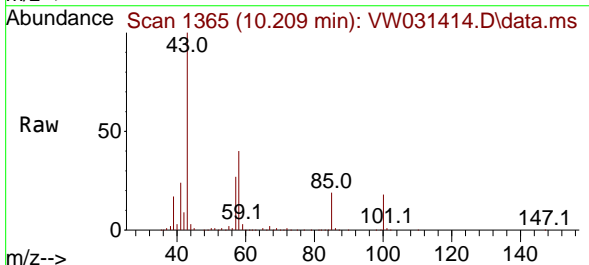
Instrument :  
 MSVOA\_W  
 ClientSampleId :



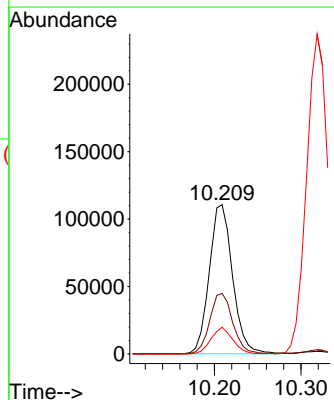
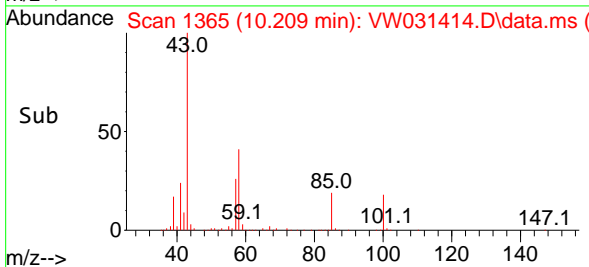
Tgt Ion: 75 Resp: 294590  
 Ion Ratio Lower Upper  
 75 100  
 77 30.3 21.8 40.4

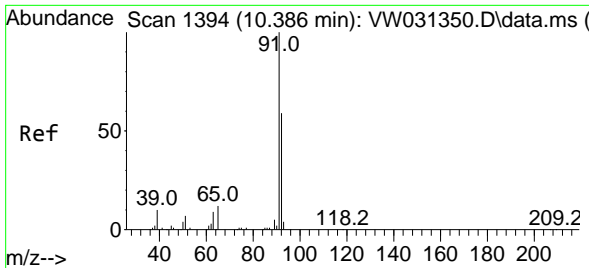


#40  
 4-Methyl-2-pentanone  
 Concen: 54.684 ug/L  
 RT: 10.209 min Scan# 1365  
 Delta R.T. 0.000 min  
 Lab File: VW031414.D  
 Acq: 20 Dec 2024 09:08



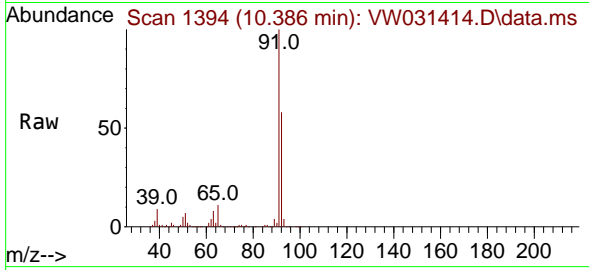
Tgt Ion: 43 Resp: 206411  
 Ion Ratio Lower Upper  
 43 100  
 58 40.3 31.1 46.7  
 100 16.7 13.0 19.6



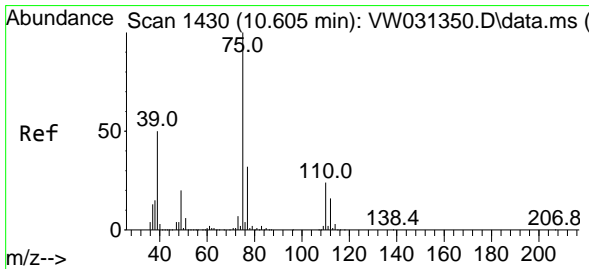
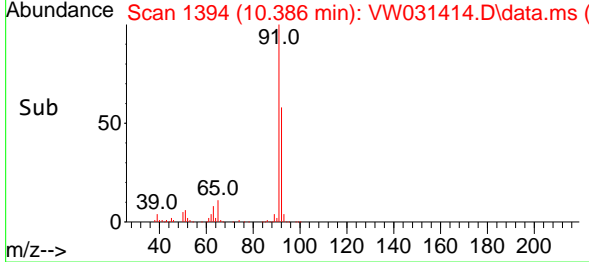
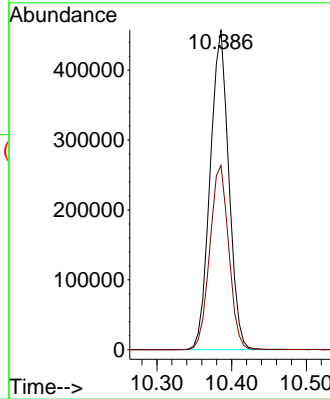


#42  
 Toluene  
 Concen: 25.515 ug/L  
 RT: 10.386 min Scan# 11  
 Delta R.T. 0.000 min  
 Lab File: VW031414.D  
 Acq: 20 Dec 2024 09:08

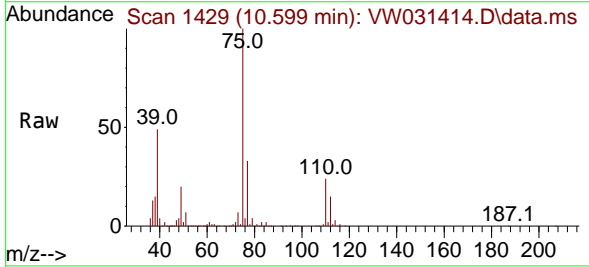
Instrument :  
 MSVOA\_W  
 ClientSampleId :



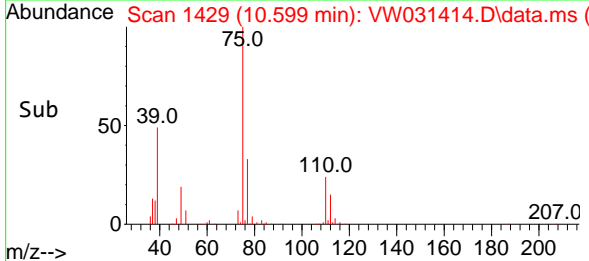
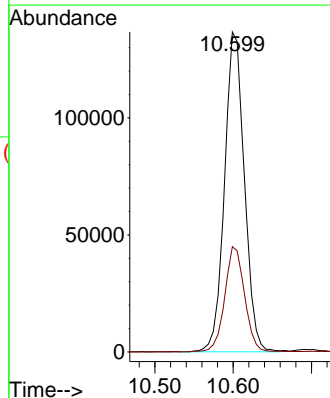
Tgt Ion: 91 Resp: 792260  
 Ion Ratio Lower Upper  
 91 100  
 92 57.6 40.3 74.9

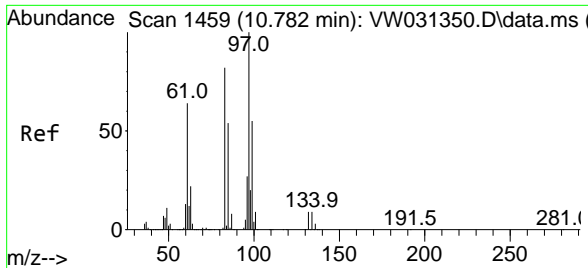


#44  
 trans-1,3-Dichloropropene  
 Concen: 24.538 ug/L  
 RT: 10.599 min Scan# 1429  
 Delta R.T. -0.006 min  
 Lab File: VW031414.D  
 Acq: 20 Dec 2024 09:08



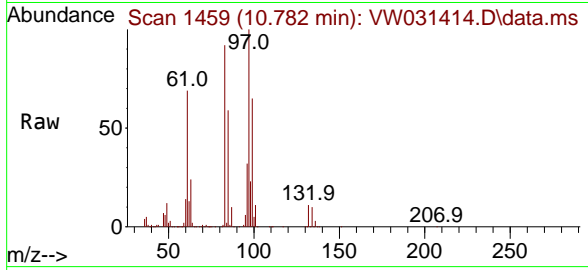
Tgt Ion: 75 Resp: 240885  
 Ion Ratio Lower Upper  
 75 100  
 77 32.9 21.2 39.4





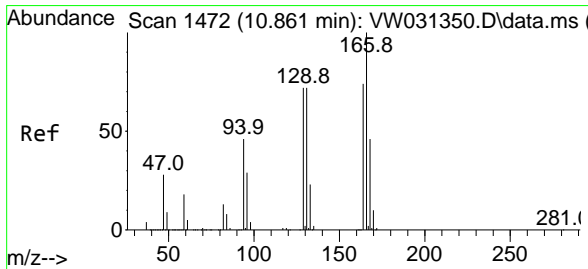
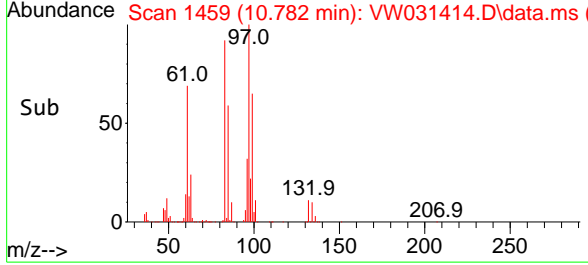
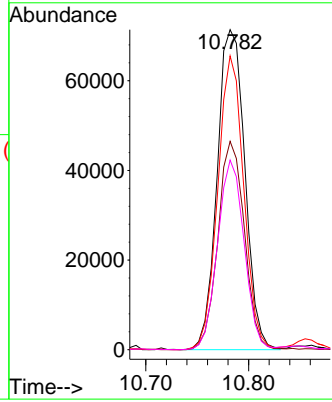
#45  
 1,1,2-Trichloroethane  
 Concen: 28.227 ug/L  
 RT: 10.782 min Scan# 1459  
 Delta R.T. 0.000 min  
 Lab File: VW031414.D  
 Acq: 20 Dec 2024 09:08

Instrument : MSVOA\_W  
 ClientSampleId :

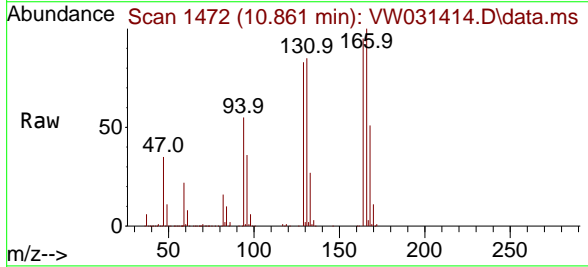


Tgt Ion: 97 Resp: 133578

Ion	Ratio	Lower	Upper
97	100		
99	65.1	43.0	80.0
83	91.8	56.4	104.7
85	59.3	37.9	70.3

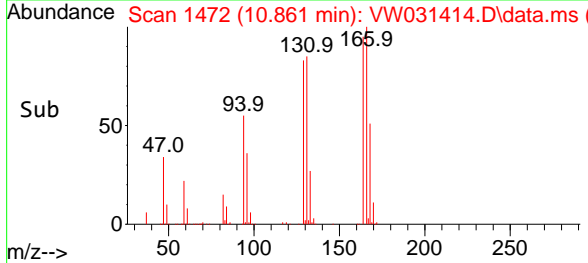
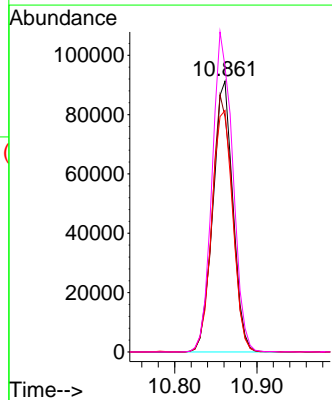


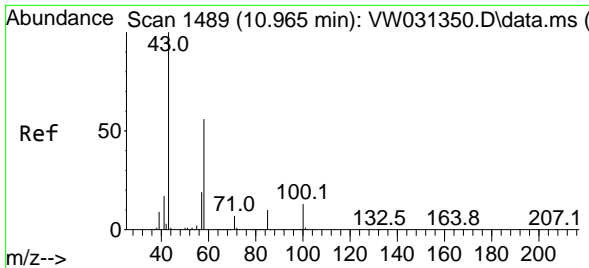
#46  
 Tetrachloroethene  
 Concen: 26.188 ug/L  
 RT: 10.861 min Scan# 1472  
 Delta R.T. 0.000 min  
 Lab File: VW031414.D  
 Acq: 20 Dec 2024 09:08



Tgt Ion: 164 Resp: 154450

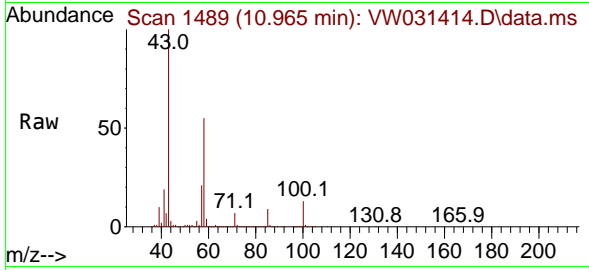
Ion	Ratio	Lower	Upper
164	100		
129	86.9	73.5	136.5
131	89.2	66.6	123.8
166	105.3	92.7	172.3





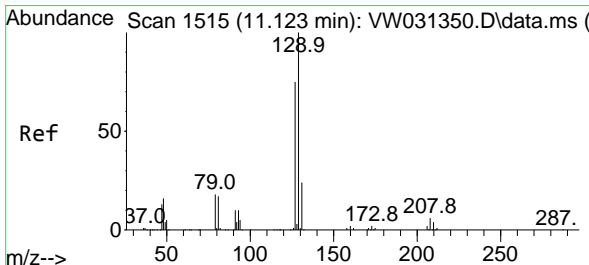
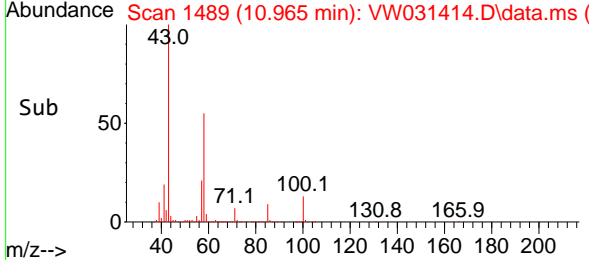
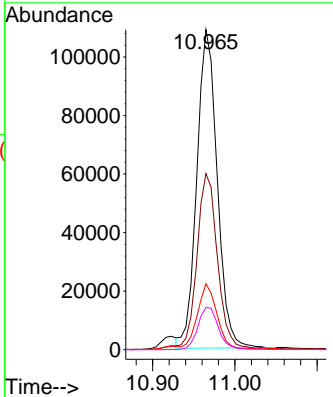
#48  
 2-Hexanone  
 Concen: 58.319 ug/L  
 RT: 10.965 min Scan# 1489  
 Delta R.T. 0.000 min  
 Lab File: VW031414.D  
 Acq: 20 Dec 2024 09:08

Instrument : MSVOA\_W  
 ClientSampleId :

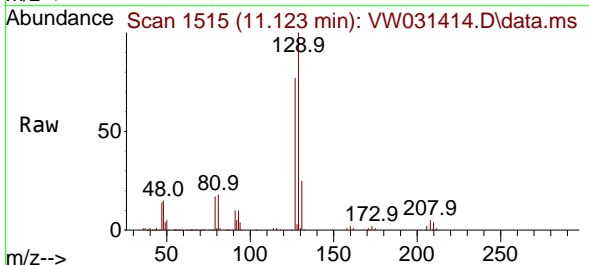


Tgt Ion: 43 Resp: 187223

Ion	Ratio	Lower	Upper
43	100		
58	55.4	43.0	64.6
57	20.0	15.7	23.5
100	13.4	10.3	15.5

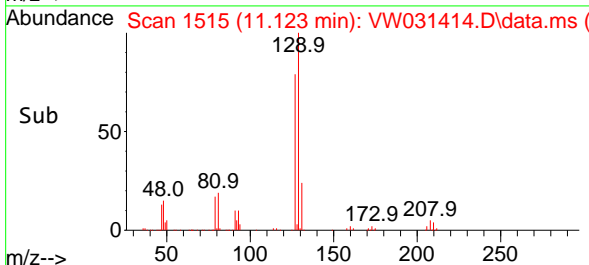
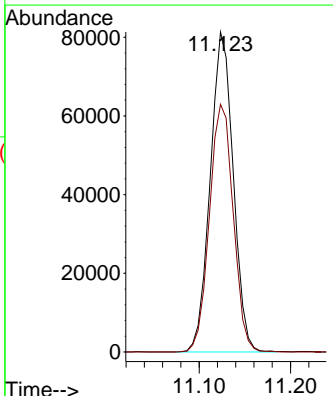


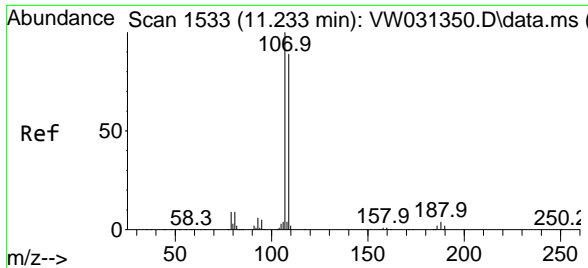
#49  
 Dibromochloromethane  
 Concen: 25.333 ug/L  
 RT: 11.123 min Scan# 1515  
 Delta R.T. 0.000 min  
 Lab File: VW031414.D  
 Acq: 20 Dec 2024 09:08



Tgt Ion: 129 Resp: 142105

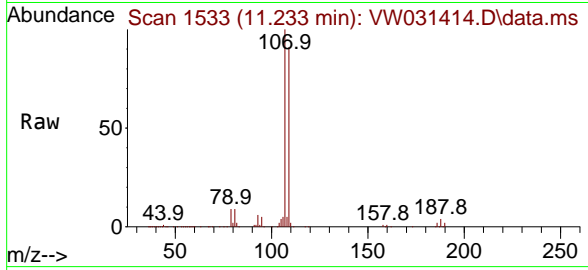
Ion	Ratio	Lower	Upper
129	100		
127	77.4	57.6	107.0



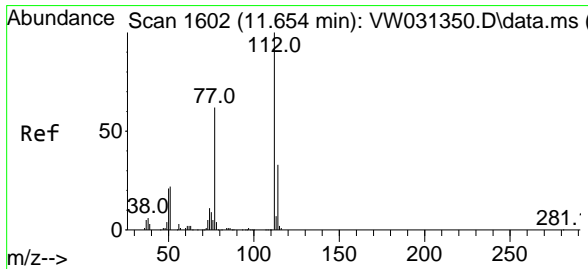
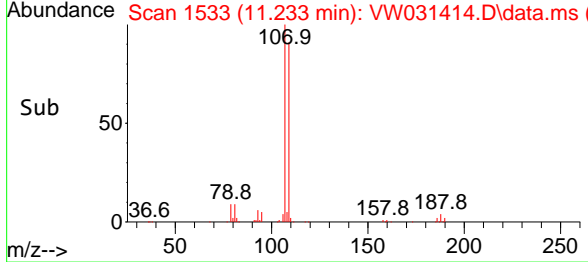
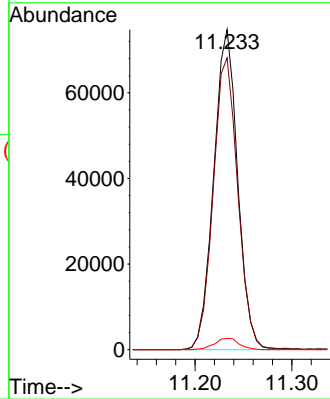


#50  
 1,2-Dibromoethane  
 Concen: 28.672 ug/L  
 RT: 11.233 min Scan# 1533  
 Delta R.T. 0.000 min  
 Lab File: VW031414.D  
 Acq: 20 Dec 2024 09:08

Instrument : MSVOA\_W  
 ClientSampled :

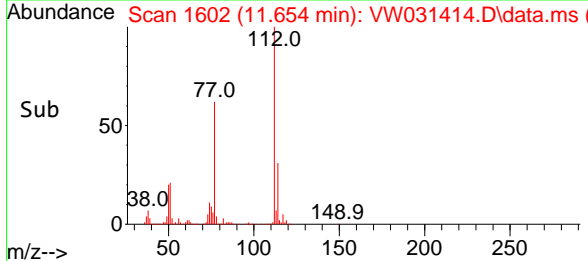
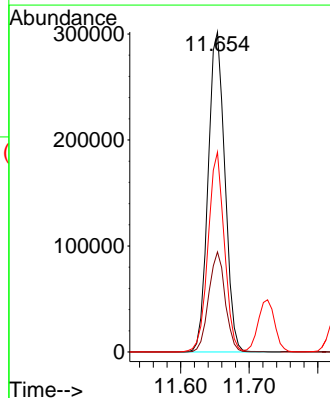
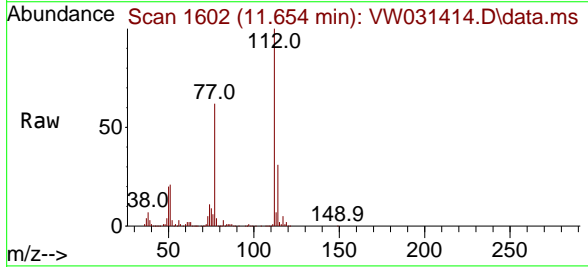


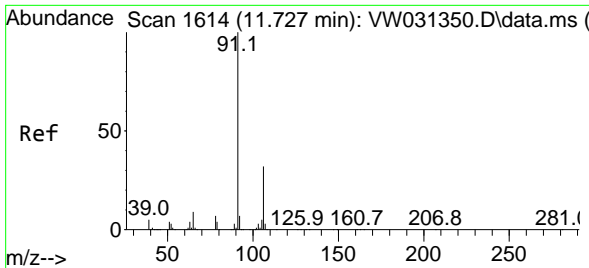
Tgt Ion:107 Resp: 128535  
 Ion Ratio Lower Upper  
 107 100  
 109 91.2 63.2 117.4  
 188 3.5 2.6 4.0



#51  
 Chlorobenzene  
 Concen: 26.344 ug/L  
 RT: 11.654 min Scan# 1602  
 Delta R.T. 0.000 min  
 Lab File: VW031414.D  
 Acq: 20 Dec 2024 09:08

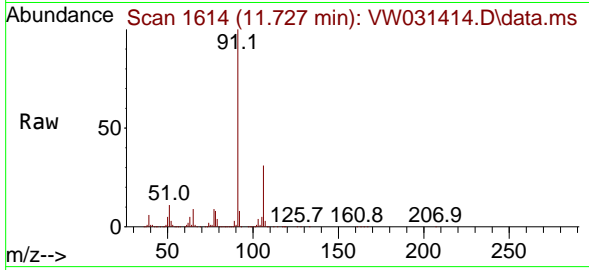
Tgt Ion:112 Resp: 512876  
 Ion Ratio Lower Upper  
 112 100  
 114 31.2 22.7 42.3  
 77 62.4 50.2 75.4



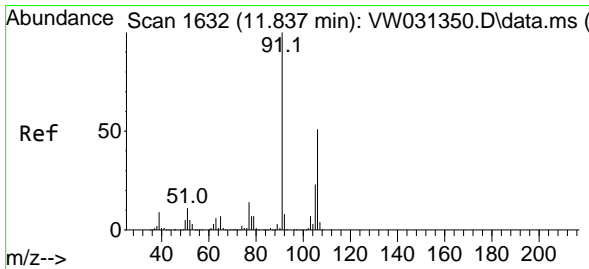
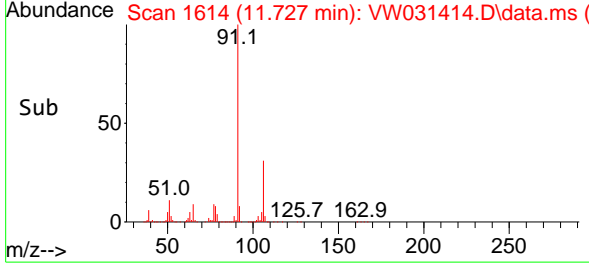
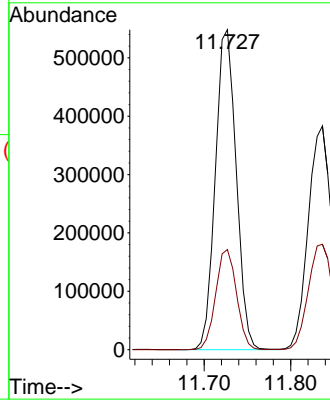


#52  
 Ethylbenzene  
 Concen: 25.460 ug/L  
 RT: 11.727 min Scan# 1614  
 Delta R.T. 0.000 min  
 Lab File: VW031414.D  
 Acq: 20 Dec 2024 09:08

Instrument : MSVOA\_W  
 ClientSampleId :

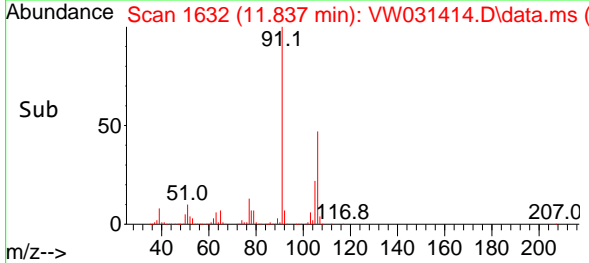
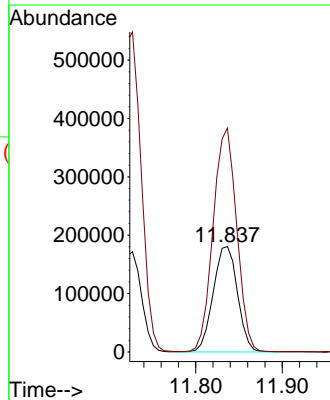
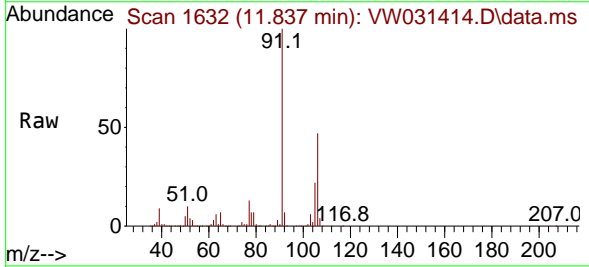


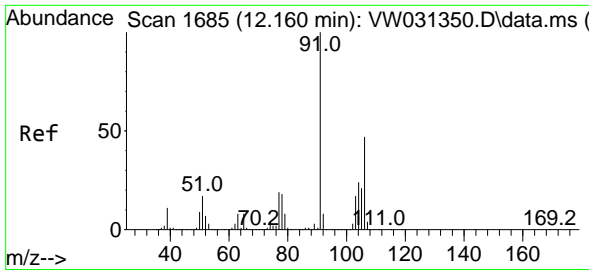
Tgt Ion: 91 Resp: 916217  
 Ion Ratio Lower Upper  
 91 100  
 106 31.3 20.7 38.5



#53  
 m,p-Xylene  
 Concen: 25.654 ug/L  
 RT: 11.837 min Scan# 1632  
 Delta R.T. 0.000 min  
 Lab File: VW031414.D  
 Acq: 20 Dec 2024 09:08

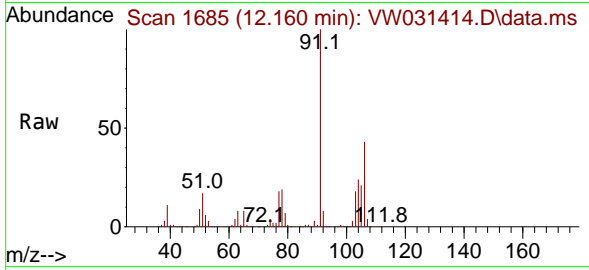
Tgt Ion: 106 Resp: 351454  
 Ion Ratio Lower Upper  
 106 100  
 91 212.1 139.9 259.7



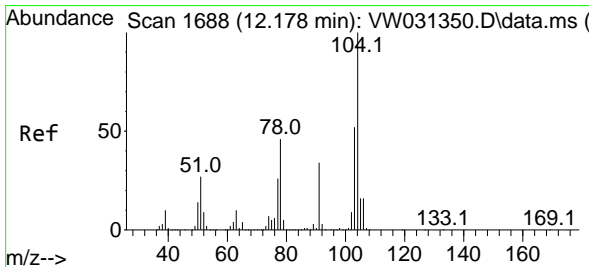
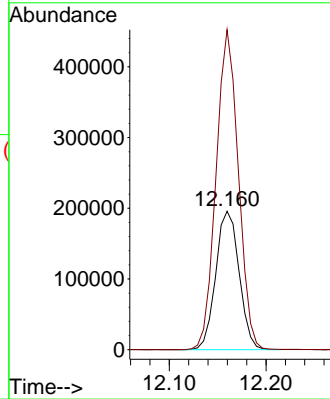
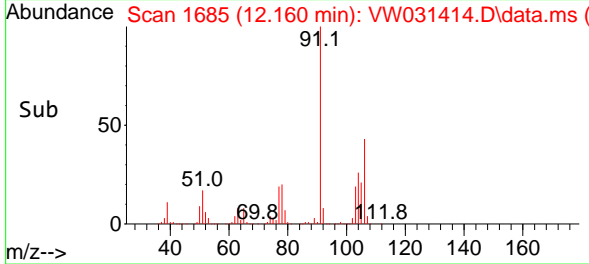


#54  
 o-Xylene  
 Concen: 25.401 ug/L  
 RT: 12.160 min Scan# 1  
 Delta R.T. 0.000 min  
 Lab File: VW031414.D  
 Acq: 20 Dec 2024 09:08

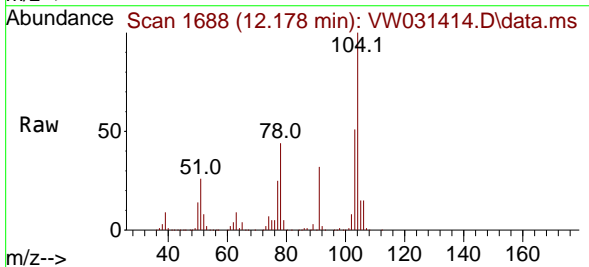
Instrument :  
 MSVOA\_W  
 ClientSampleId :



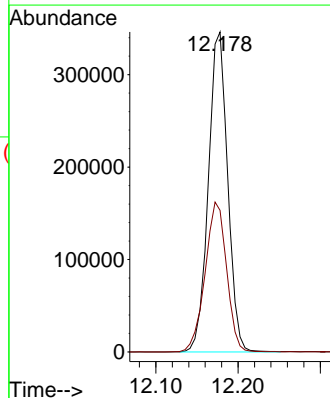
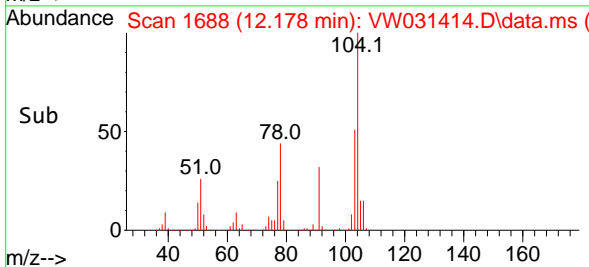
Tgt Ion:106 Resp: 327962  
 Ion Ratio Lower Upper  
 106 100  
 91 231.3 153.1 284.3



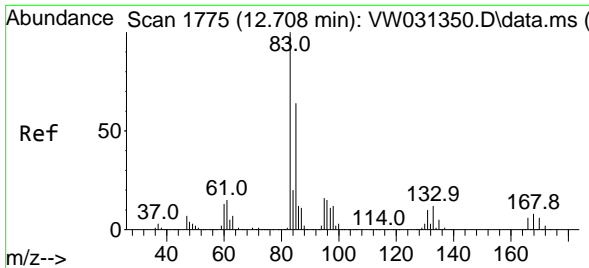
#55  
 Styrene  
 Concen: 26.298 ug/L  
 RT: 12.178 min Scan# 1688  
 Delta R.T. 0.000 min  
 Lab File: VW031414.D  
 Acq: 20 Dec 2024 09:08



Tgt Ion:104 Resp: 564782  
 Ion Ratio Lower Upper  
 104 100  
 78 44.3 31.4 58.4

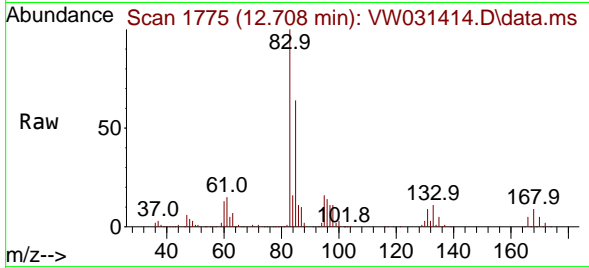




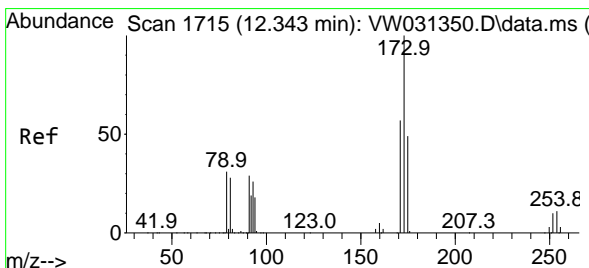
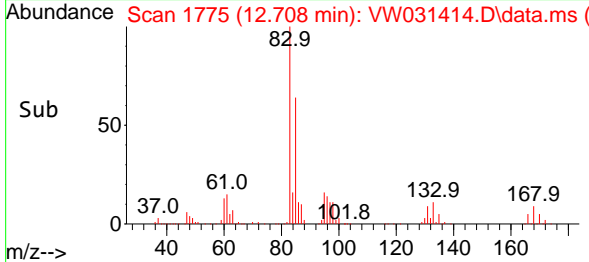
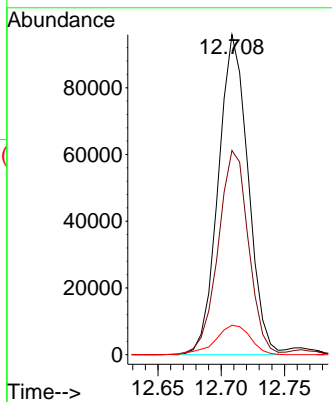


#57  
 1,1,2,2-Tetrachloroethane  
 Concen: 30.742 ug/L  
 RT: 12.708 min Scan# 1775  
 Delta R.T. 0.000 min  
 Lab File: VW031414.D  
 Acq: 20 Dec 2024 09:08

Instrument : MSVOA\_W  
 ClientSampleId :

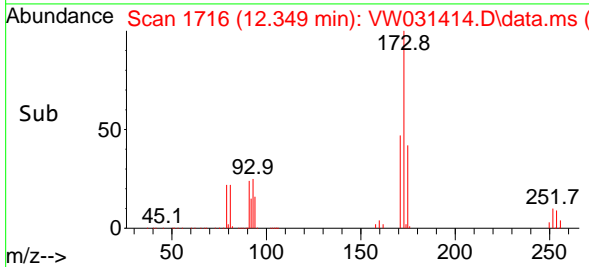
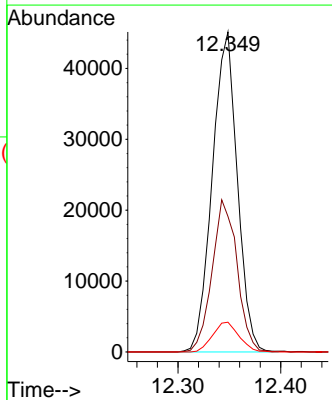
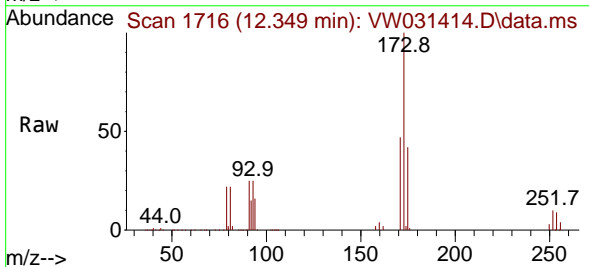


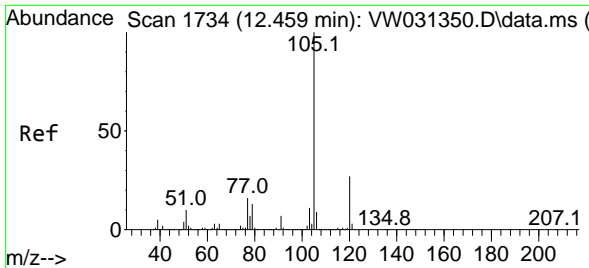
Tgt Ion: 83 Resp: 156827  
 Ion Ratio Lower Upper  
 83 100  
 85 63.8 44.1 81.9  
 131 9.2 7.9 11.9



#59  
 Bromoform  
 Concen: 22.396 ug/L  
 RT: 12.349 min Scan# 1716  
 Delta R.T. 0.000 min  
 Lab File: VW031414.D  
 Acq: 20 Dec 2024 09:08

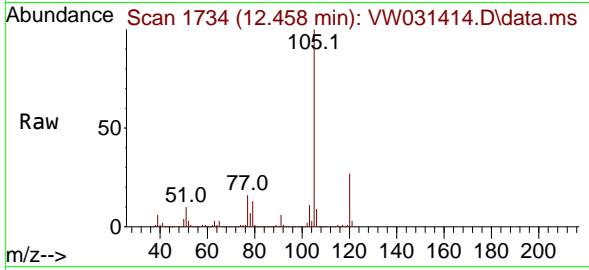
Tgt Ion: 173 Resp: 76372  
 Ion Ratio Lower Upper  
 173 100  
 175 47.4 38.6 57.8  
 254 9.8 7.6 11.4





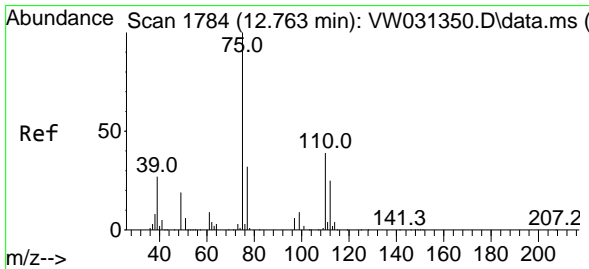
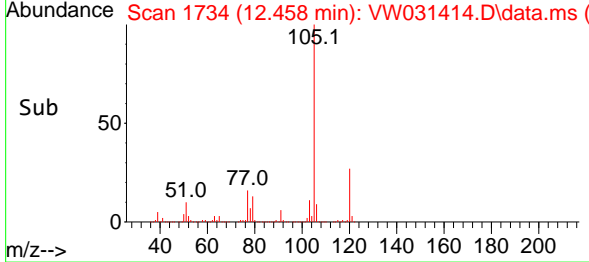
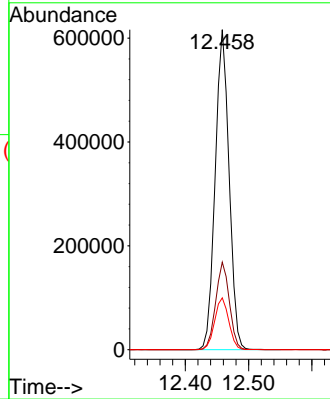
#60  
 Isopropylbenzene  
 Concen: 23.594 ug/L  
 RT: 12.458 min Scan# 1  
 Delta R.T. 0.000 min  
 Lab File: VW031414.D  
 Acq: 20 Dec 2024 09:08

Instrument :  
 MSVOA\_W  
 ClientSampleId :



Tgt Ion:105 Resp: 937265

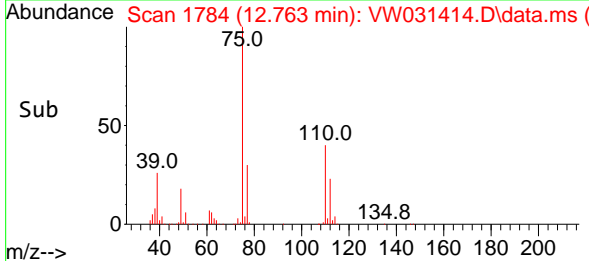
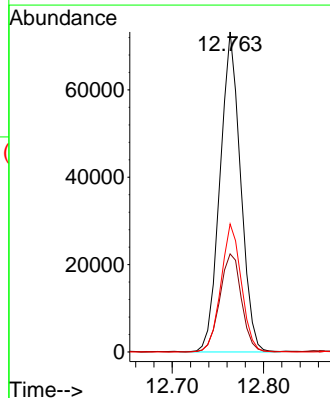
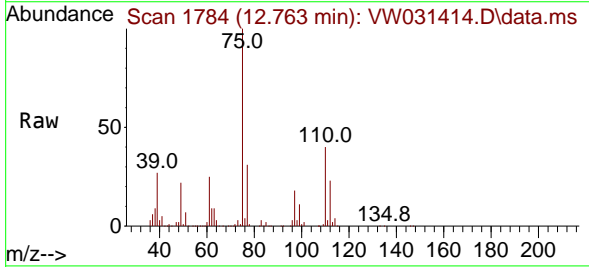
Ion	Ratio	Lower	Upper
105	100		
120	27.0	20.6	31.0
77	16.5	12.8	19.2

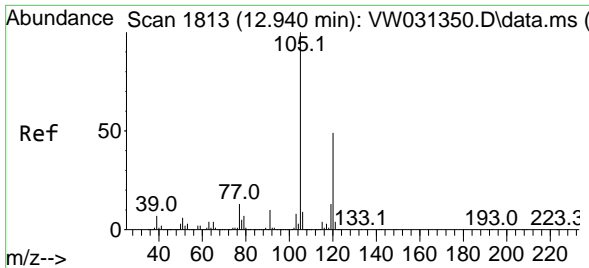


#61  
 1,2,3-Trichloropropane  
 Concen: 27.634 ug/L  
 RT: 12.763 min Scan# 1784  
 Delta R.T. 0.000 min  
 Lab File: VW031414.D  
 Acq: 20 Dec 2024 09:08

Tgt Ion: 75 Resp: 114784

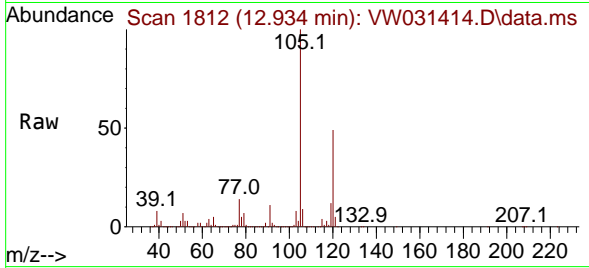
Ion	Ratio	Lower	Upper
75	100		
77	32.5	25.3	37.9
110	39.5	31.2	46.8



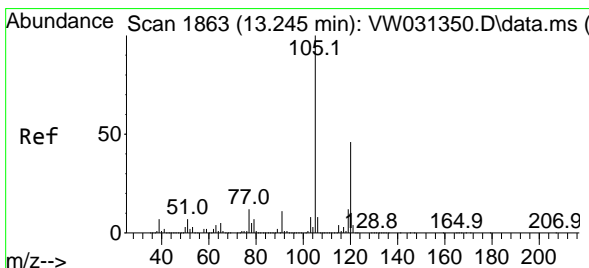
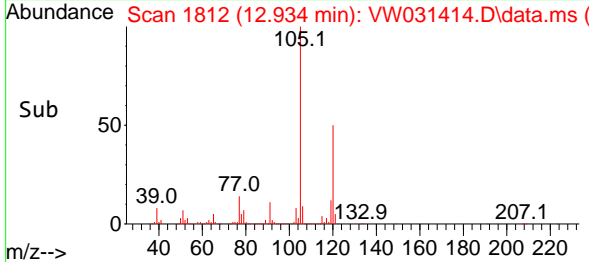
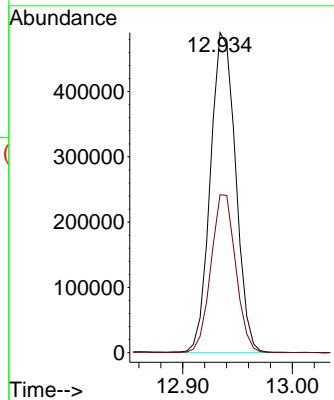


#62  
 1,3,5-Trimethylbenzene  
 Concen: 23.285 ug/L  
 RT: 12.934 min Scan# 1812  
 Delta R.T. -0.006 min  
 Lab File: VW031414.D  
 Acq: 20 Dec 2024 09:08

Instrument : MSVOA\_W  
 ClientSampleId :

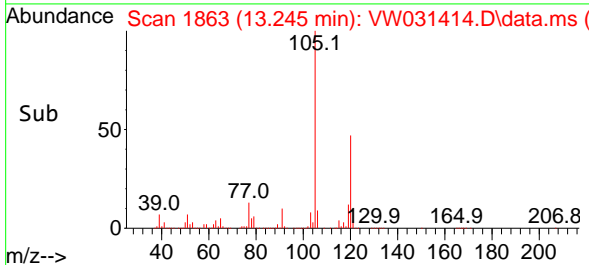
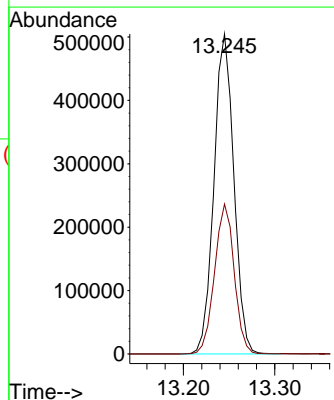
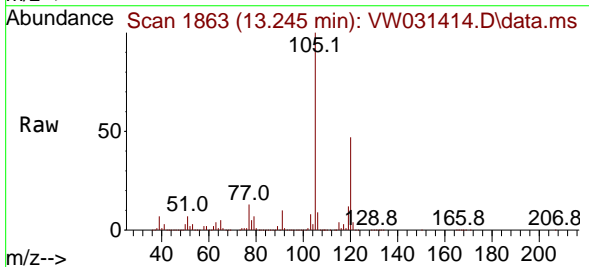


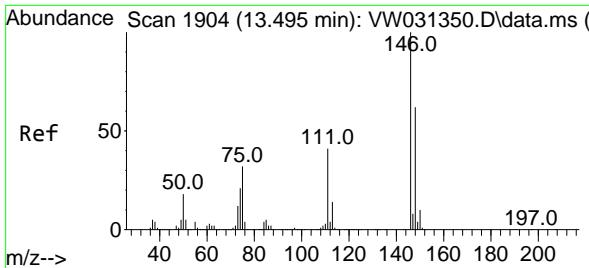
Tgt Ion:105 Resp: 784216  
 Ion Ratio Lower Upper  
 105 100  
 120 48.4 37.3 55.9



#63  
 1,2,4-Trimethylbenzene  
 Concen: 23.444 ug/L  
 RT: 13.245 min Scan# 1863  
 Delta R.T. 0.000 min  
 Lab File: VW031414.D  
 Acq: 20 Dec 2024 09:08

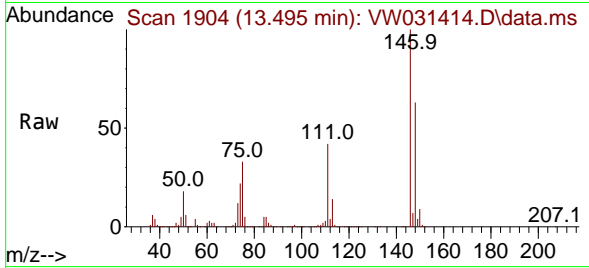
Tgt Ion:105 Resp: 763114  
 Ion Ratio Lower Upper  
 105 100  
 120 46.3 35.0 52.4



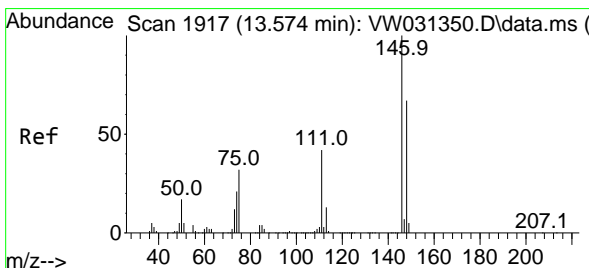
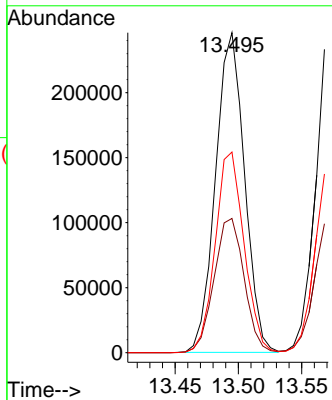
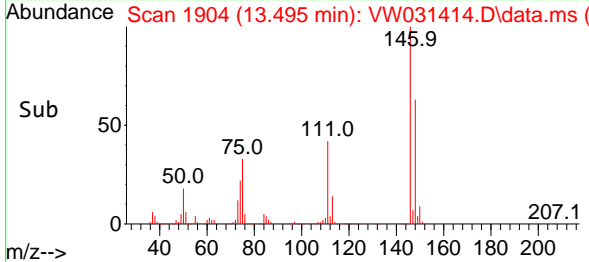


#64  
 1,3-Dichlorobenzene  
 Concen: 24.347 ug/L  
 RT: 13.495 min Scan# 1904  
 Delta R.T. 0.000 min  
 Lab File: VW031414.D  
 Acq: 20 Dec 2024 09:08

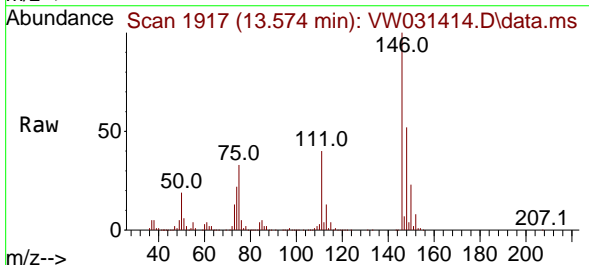
Instrument :  
 MSVOA\_W  
 ClientSampleId :



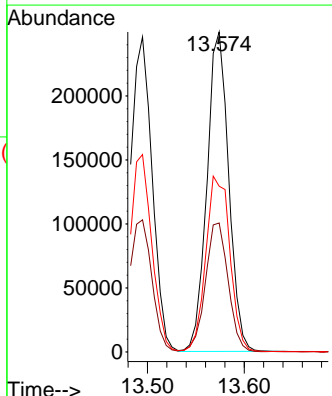
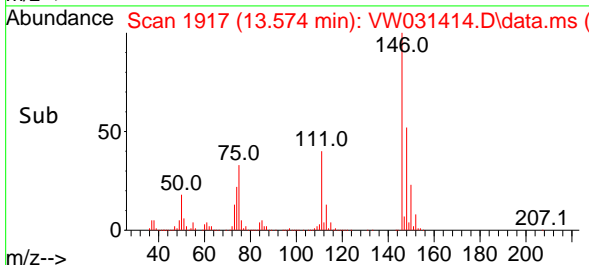
Tgt Ion:146 Resp: 391853  
 Ion Ratio Lower Upper  
 146 100  
 111 41.9 27.6 51.2  
 148 62.7 41.0 76.2

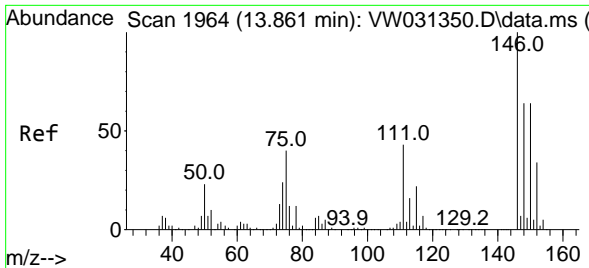


#65  
 1,4-Dichlorobenzene  
 Concen: 24.511 ug/L  
 RT: 13.574 min Scan# 1917  
 Delta R.T. 0.000 min  
 Lab File: VW031414.D  
 Acq: 20 Dec 2024 09:08



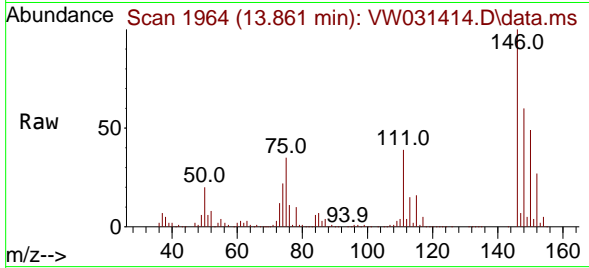
Tgt Ion:146 Resp: 390870  
 Ion Ratio Lower Upper  
 146 100  
 111 40.3 30.7 56.9  
 148 51.8 46.5 86.3



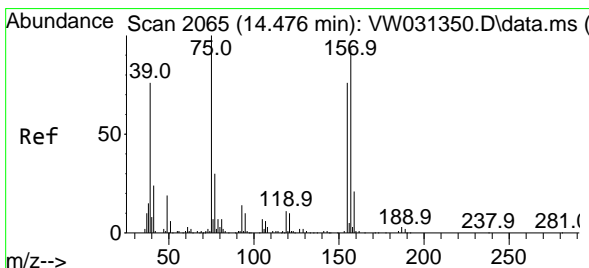
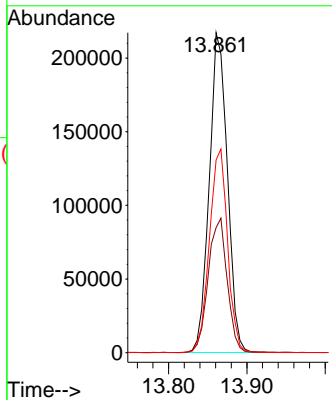
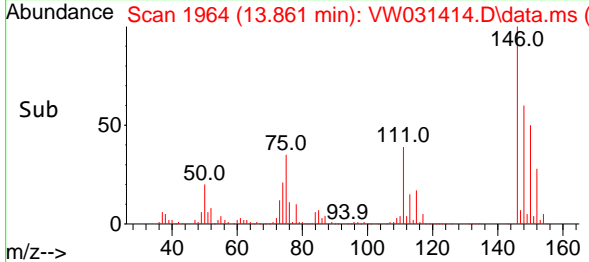


#67  
 1,2-Dichlorobenzene  
 Concen: 25.185 ug/L  
 RT: 13.861 min Scan# 1964  
 Delta R.T. -0.006 min  
 Lab File: VW031414.D  
 Acq: 20 Dec 2024 09:08

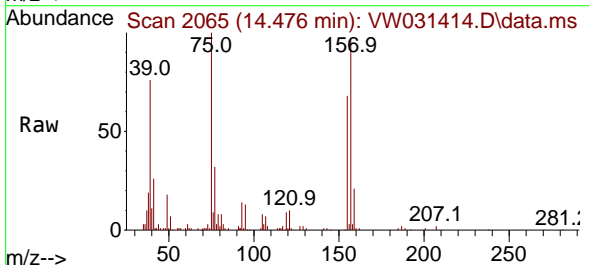
Instrument : MSVOA\_W  
 ClientSampleId :



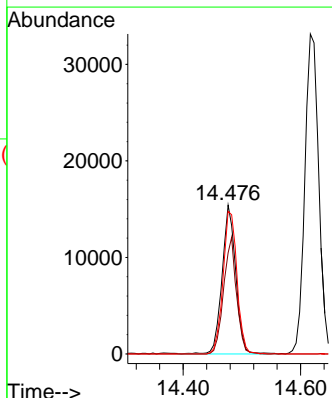
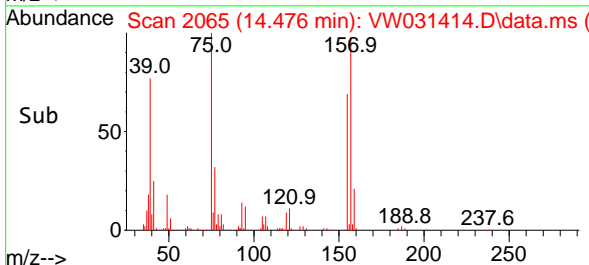
Tgt Ion:146 Resp: 349250  
 Ion Ratio Lower Upper  
 146 100  
 111 39.1 38.6 58.0  
 148 60.3 53.6 80.4

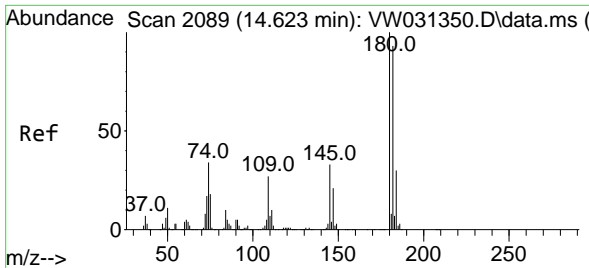


#68  
 1,2-Dibromo-3-chloropropane  
 Concen: 23.697 ug/L  
 RT: 14.476 min Scan# 2065  
 Delta R.T. 0.000 min  
 Lab File: VW031414.D  
 Acq: 20 Dec 2024 09:08



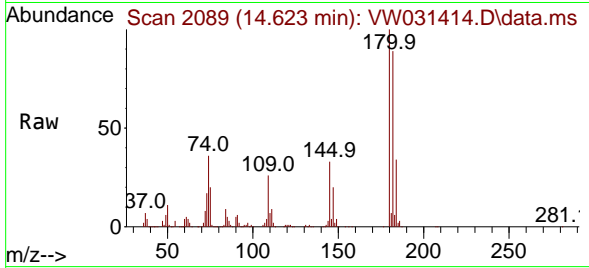
Tgt Ion: 75 Resp: 24979  
 Ion Ratio Lower Upper  
 75 100  
 155 68.0 56.6 85.0  
 157 95.7 71.2 106.8



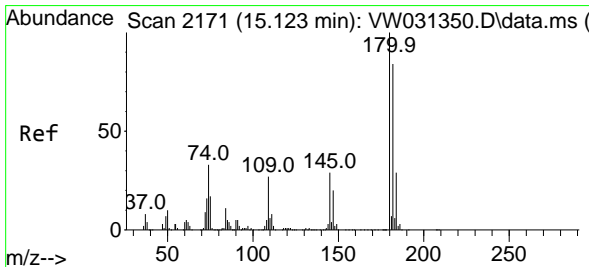
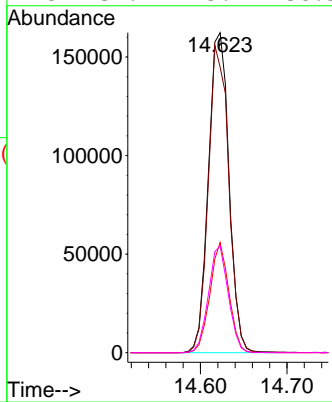
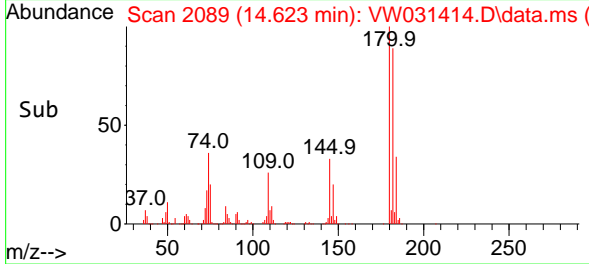


#69  
 1,3,5-Trichlorobenzene  
 Concen: 23.789 ug/L  
 RT: 14.623 min Scan# 2089  
 Delta R.T. 0.000 min  
 Lab File: VW031414.D  
 Acq: 20 Dec 2024 09:08

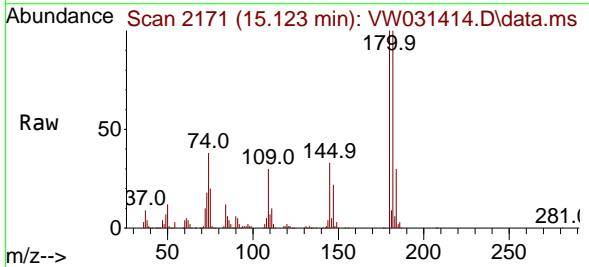
Instrument : MSVOA\_W  
 ClientSampleId :



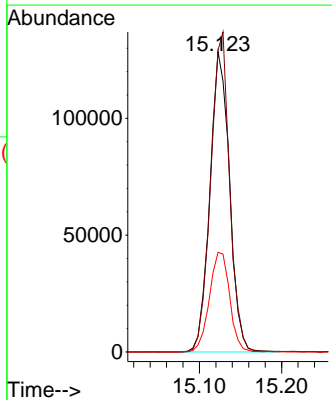
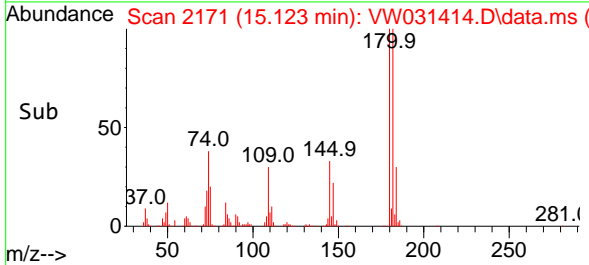
Tgt Ion:180 Resp: 268145  
 Ion Ratio Lower Upper  
 180 100  
 182 95.1 75.0 112.4  
 184 31.8 24.6 36.8  
 145 32.2 25.7 38.5

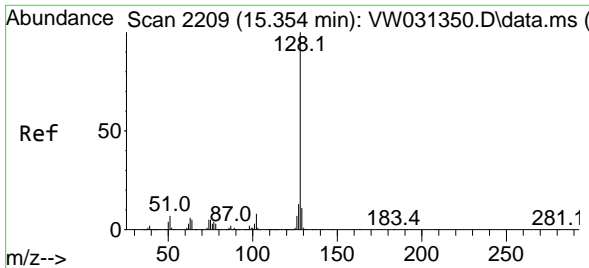


#70  
 1,2,4-trichlorobenzene  
 Concen: 22.790 ug/L  
 RT: 15.123 min Scan# 2171  
 Delta R.T. -0.006 min  
 Lab File: VW031414.D  
 Acq: 20 Dec 2024 09:08



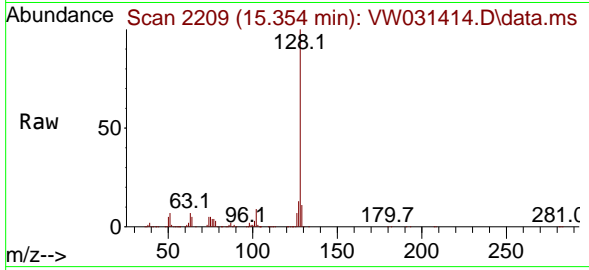
Tgt Ion:180 Resp: 213692  
 Ion Ratio Lower Upper  
 180 100  
 182 102.0 78.2 117.2  
 145 34.2 26.7 40.1



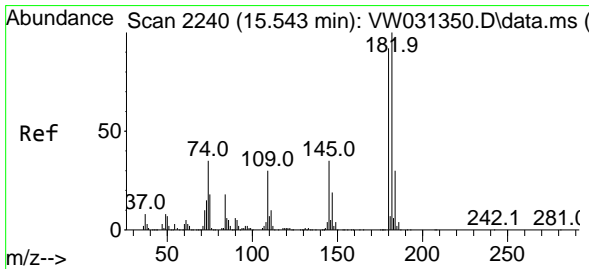
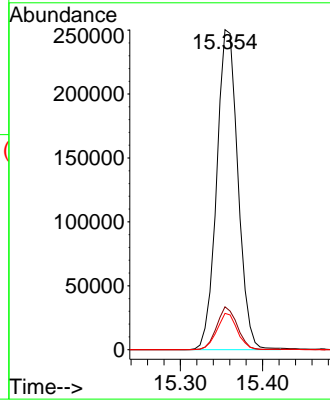
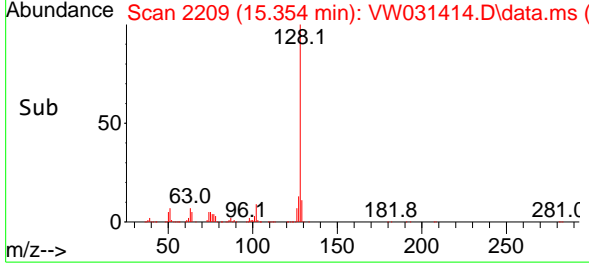


#71  
 Naphthalene  
 Concen: 27.330 ug/L  
 RT: 15.354 min Scan# 2209  
 Delta R.T. -0.006 min  
 Lab File: VW031414.D  
 Acq: 20 Dec 2024 09:08

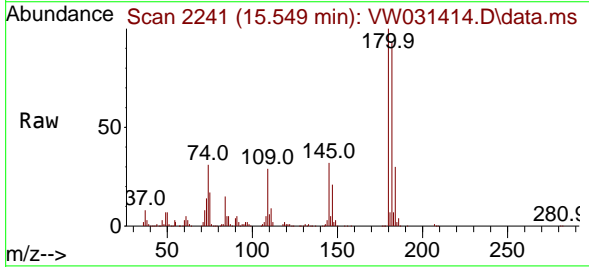
Instrument : MSVOA\_W  
 ClientSampleId :



Tgt Ion:128 Resp: 449268  
 Ion Ratio Lower Upper  
 128 100  
 127 13.0 10.7 16.1  
 129 10.9 8.6 13.0



#72  
 1,2,3-Trichlorobenzene  
 Concen: 25.881 ug/L  
 RT: 15.549 min Scan# 2241  
 Delta R.T. 0.000 min  
 Lab File: VW031414.D  
 Acq: 20 Dec 2024 09:08



Tgt Ion:180 Resp: 195520  
 Ion Ratio Lower Upper  
 180 100  
 182 93.3 75.0 112.4  
 145 33.9 27.8 41.6

