

Data Path : Z:\VOASRV\HPCHEM1\MSVOA\_W\DATA\VW122218\  
 Data File : VW007753.D  
 Acq On : 20 Dec 2018 17:58  
 Operator : SY/AP  
 Sample : J6392-13  
 Misc : 7.21G/5ML/MSVOA\_W/SOIL  
 ALS Vial : 9 Sample Multiplier: 1

**Instrument :**  
 MSVOA\_W  
**ClientSampleId :**  
 KY001SB104-121218-(24-26)

**Manual Integrations**  
**APPROVED**  
 apatel  
 12/21/2018 11:02:54 AM

Quant Time: Dec 21 04:29:42 2018  
 Quant Method : Z:\VOASRV\HPCHEM1\MSVOA\_W\METHOD\82W122118S.M  
 Quant Title : SW846 8260  
 QLast Update : Thu Dec 20 06:30:23 2018  
 Response via : Initial Calibration

Internal Standards	R.T.	QIon	Response	Conc	Units	Dev(Min)
1) Pentafluorobenzene	7.95	168	76886	50.00	ug/l	0.00
34) 1,4-Difluorobenzene	8.85	114	127533	50.00	ug/l	0.00
63) Chlorobenzene-d5	11.64	117	112267	50.00	ug/l	0.00
72) 1,4-Dichlorobenzene-d4	13.57	152	46461	50.00	ug/l	0.00

System Monitoring Compounds

33) 1,2-Dichloroethane-d4	8.30	65	71645	85.02	ug/l	0.00
Spiked Amount	50.000		Recovery	=	170.04%	
35) Dibromofluoromethane	7.88	113	67831	87.18	ug/l	0.00
Spiked Amount	50.000		Recovery	=	174.36%	
50) Toluene-d8	10.34	98	274336	93.53	ug/l	0.01
Spiked Amount	50.000		Recovery	=	187.06%	
62) 4-Bromofluorobenzene	12.62	95	107390	94.78	ug/l	0.00
Spiked Amount	50.000		Recovery	=	189.56%	

Target Compounds

						Qvalue
31) Cyclohexane	7.94	56	1276372	1017.462	ug/l #	56
39) Methylcyclohexane	9.34	83	1775680	1160.914	ug/l #	87
40) Benzene	8.32	78	2858624	870.285	ug/l	99
52) Toluene	10.40	92	27674215m	12557.443	ug/l	
67) Ethyl Benzene	11.74	91	18361331	4403.449	ug/l #	88
68) m/p-Xylenes	11.86	106	20370516	12593.741	ug/l #	1
69) o-Xylene	12.18	106	11287734	7444.707	ug/l	74
73) Isopropylbenzene	12.47	105	3783496	1077.326	ug/l	99
78) n-propylbenzene	12.81	91	6774425	1657.102	ug/l	99
80) 1,3,5-Trimethylbenzene	12.96	105	7662931	2529.608	ug/l	96
84) 1,2,4-Trimethylbenzene	13.26	105	19822677	6484.933	ug/l	83
85) sec-Butylbenzene	13.39	105	410028m	111.933	ug/l	
86) p-Isopropyltoluene	13.51	119	2162589	649.237	ug/l	99
89) n-Butylbenzene	13.83	91	651218	213.228	ug/l #	68
95) Naphthalene	15.38	128	4400411	2396.490	ug/l	99

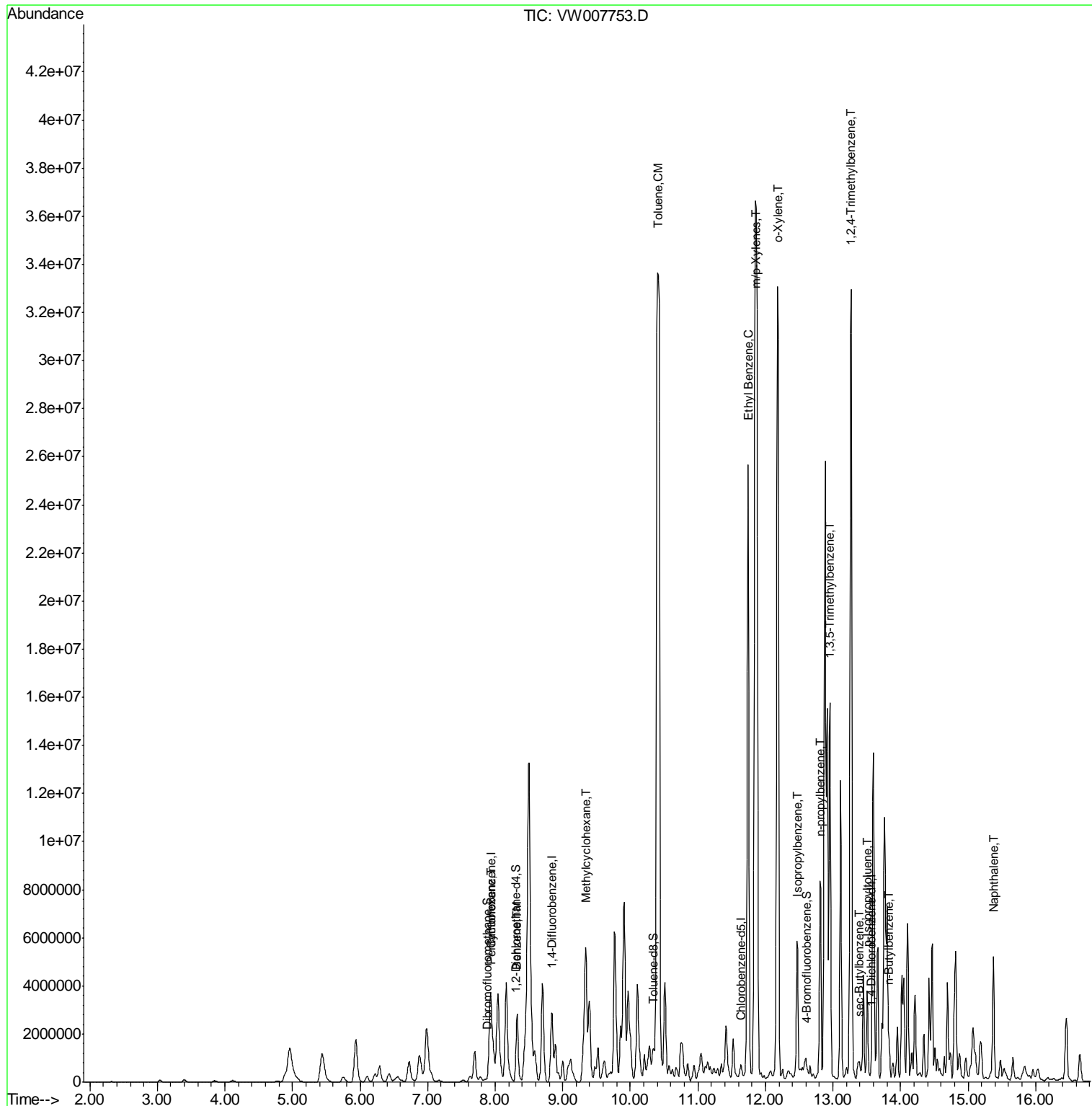
(#) = qualifier out of range (m) = manual integration (+) = signals summed

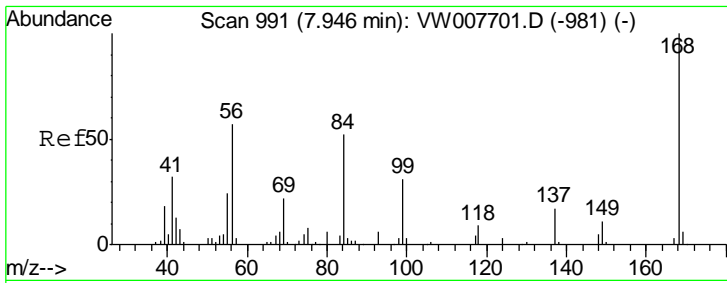
Data Path : Z:\VOASRV\HPCHEM1\MSVOA\_W\DATA\VW122218\  
 Data File : VW007753.D  
 Acq On : 20 Dec 2018 17:58  
 Operator : SY/AP  
 Sample : J6392-13  
 Misc : 7.21G/5ML/MSVOA\_W/SOIL  
 ALS Vial : 9 Sample Multiplier: 1

**Instrument :**  
 MSVOA\_W  
**Client Sampled :**  
 KY001SB104-121218-(24-26)

**Manual Integrations**  
**APPROVED**  
 apatel  
 12/21/2018 11:02:54 AM

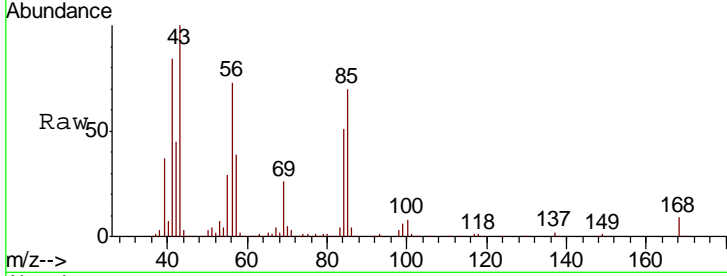
Quant Time: Dec 21 04:29:42 2018  
 Quant Method : Z:\VOASRV\HPCHEM1\MSVOA\_W\METHOD\82W122118S.M  
 Quant Title : SW846 8260  
 QLast Update : Thu Dec 20 06:30:23 2018  
 Response via : Initial Calibration





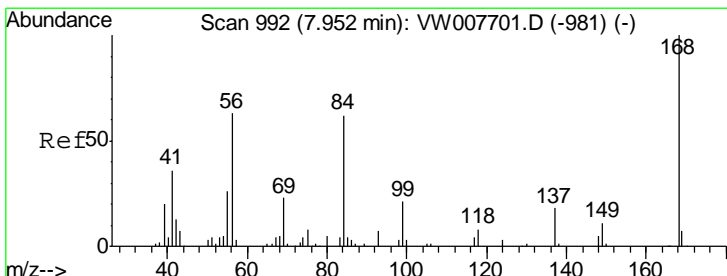
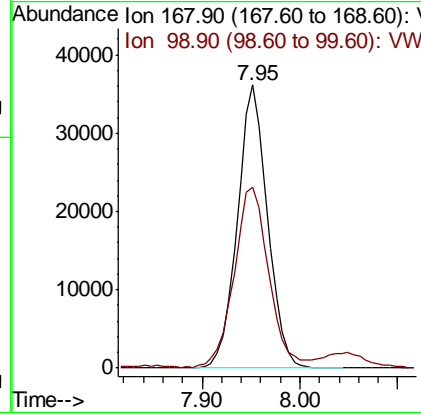
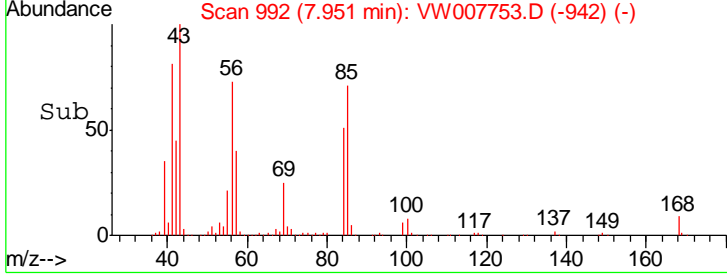
#1  
 Pentafluorobenzene  
 Concen: 50.000 ug/l  
 RT: 7.95 min Scan# 992  
 Delta R.T. 0.01 min  
 Lab File: VW007753.D  
 Acq: 20 Dec 2018 17:58

**Instrument :**  
 MSVOA\_W  
**ClientSampled :**  
 KY001SB104-121218-(24-26)

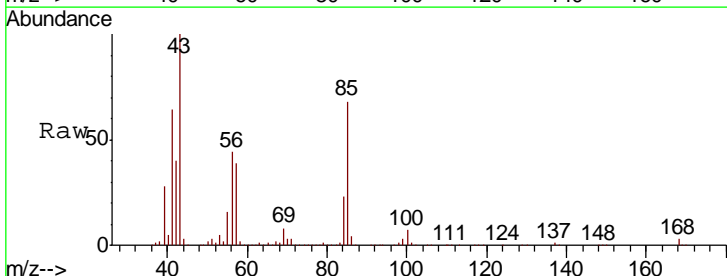


Tgt Ion: 168 Resp: 76886  
 Ion Ratio Lower Upper  
 168 100  
 99 63.8 54.0 81.0

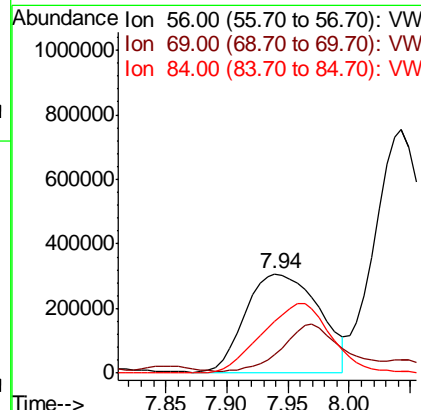
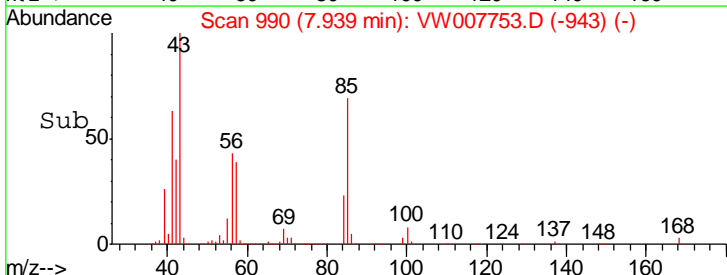
**Manual Integrations**  
**APPROVED**  
 apatel  
 12/21/2018 11:02:54 AM

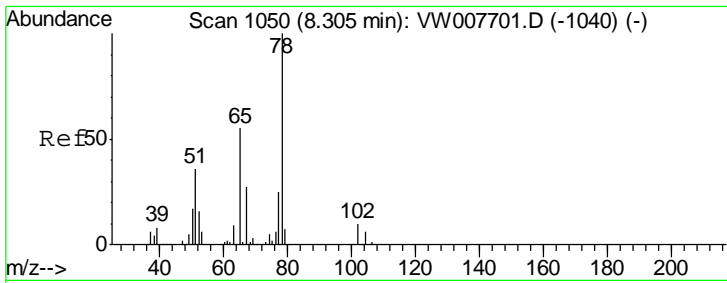


#31  
 Cyclohexane  
 Concen: 1017.462 ug/l  
 RT: 7.94 min Scan# 990  
 Delta R.T. -0.01 min  
 Lab File: VW007753.D  
 Acq: 20 Dec 2018 17:58



Tgt Ion: 56 Resp: 1276372  
 Ion Ratio Lower Upper  
 56 100  
 69 14.3 29.7 44.5#  
 84 52.8 78.9 118.3#





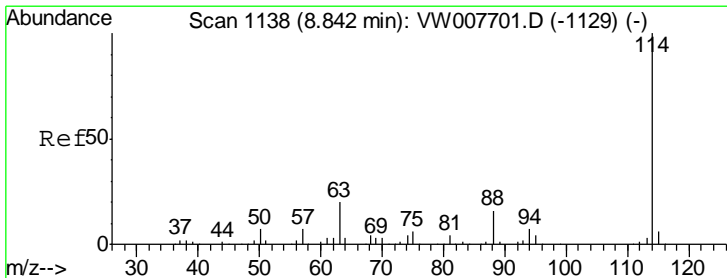
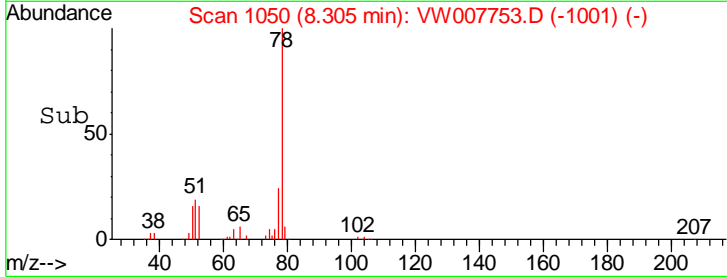
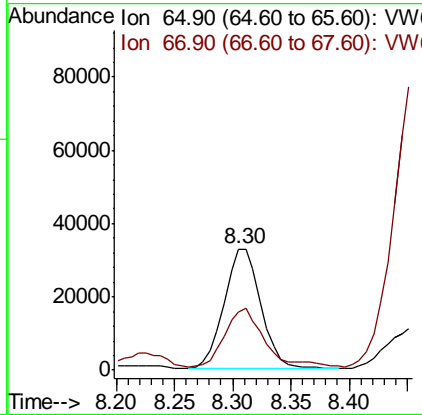
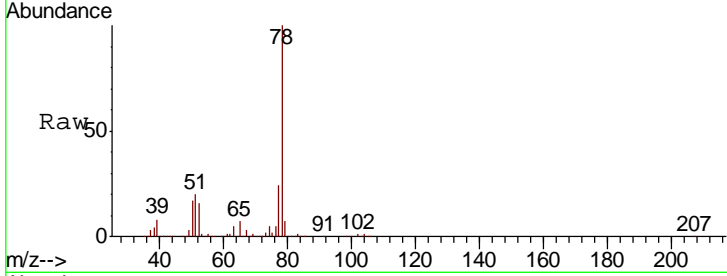
#33  
 1,2-Dichloroethane-d4  
 Concen: 85.018 ug/l  
 RT: 8.30 min Scan# 1050  
 Delta R.T. -0.00 min  
 Lab File: VW007753.D  
 Acq: 20 Dec 2018 17:58

**Instrument :**  
 MSVOA\_W  
**ClientSampled :**  
 KY001SB104-121218-(24-26)

Tgt Ion	Resp	Lower	Upper
65	71645		
65	100		
67	51.5	0.0	100.6

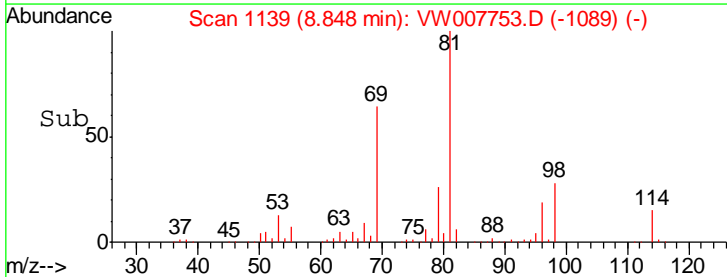
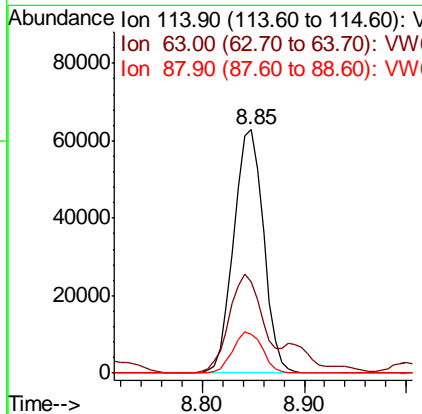
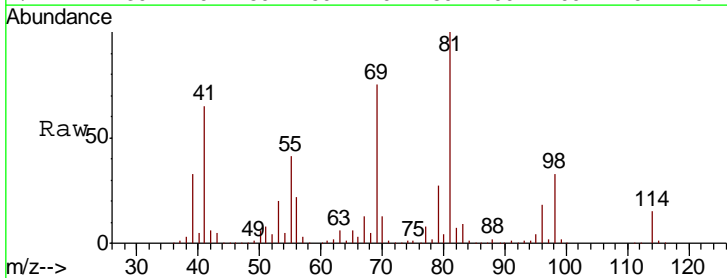
**Manual Integrations**  
**APPROVED**

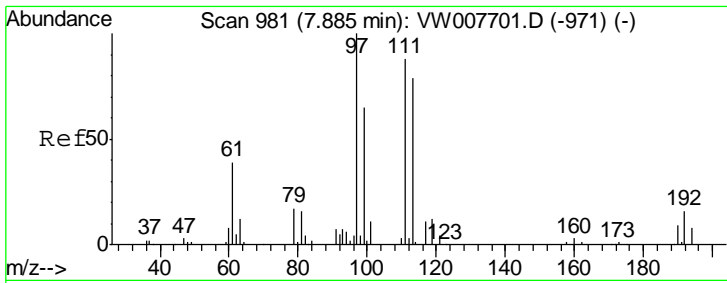
apatel  
 12/21/2018 11:02:54 AM



#34  
 1,4-Difluorobenzene  
 Concen: 50.000 ug/l  
 RT: 8.85 min Scan# 1139  
 Delta R.T. 0.01 min  
 Lab File: VW007753.D  
 Acq: 20 Dec 2018 17:58

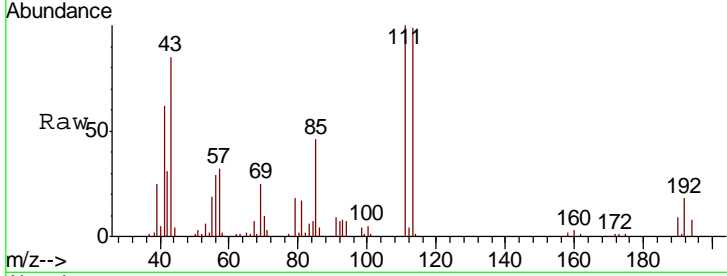
Tgt Ion	Resp	Lower	Upper
114	127533		
114	100		
63	37.3	0.0	40.0
88	15.9	0.0	32.6





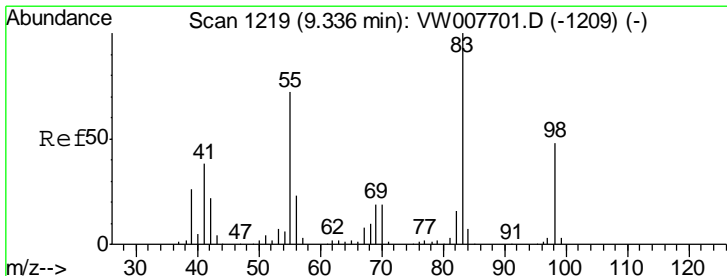
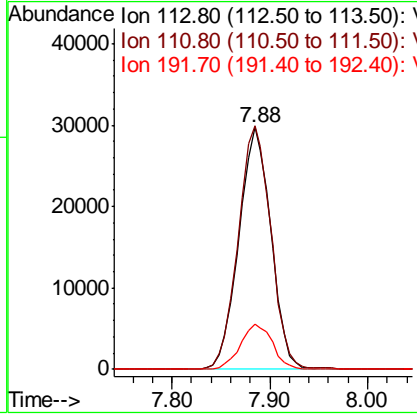
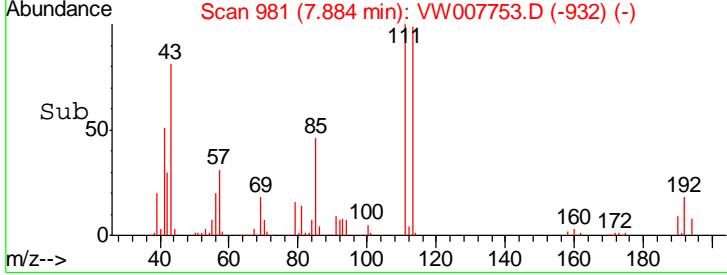
#35  
 Dibromofluoromethane  
 Concen: 87.185 ug/l  
 RT: 7.88 min Scan# 981  
 Delta R.T. -0.00 min  
 Lab File: VW007753.D  
 Acq: 20 Dec 2018 17:58

Instrument : MSVOA\_W  
 ClientSampled : KY001SB104-121218-(24-26)

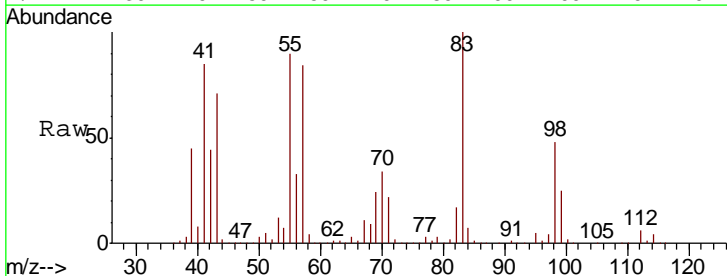


Tgt Ion	Resp	Lower	Upper
113	67831		
113	100		
111	102.1	82.6	124.0
192	18.7	15.5	23.3

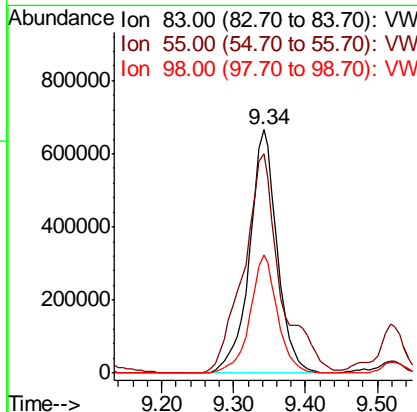
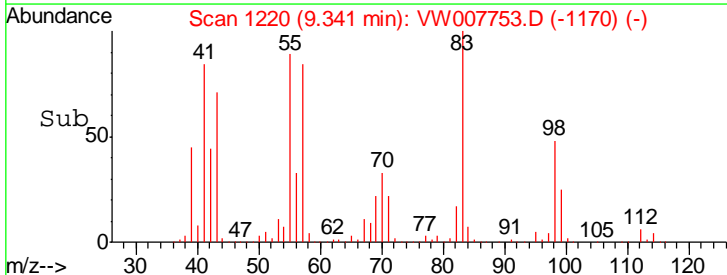
Manual Integrations  
**APPROVED**  
 apatel  
 12/21/2018 11:02:54 AM

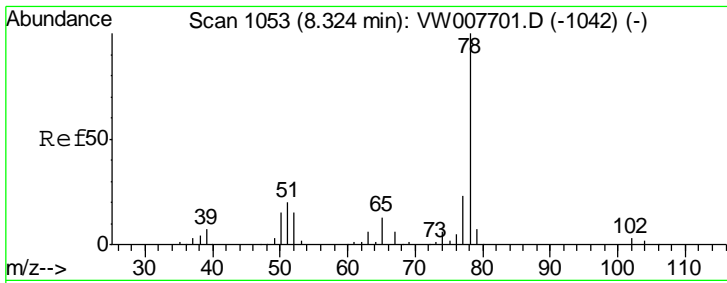


#39  
 Methylcyclohexane  
 Concen: 1160.914 ug/l  
 RT: 9.34 min Scan# 1220  
 Delta R.T. 0.01 min  
 Lab File: VW007753.D  
 Acq: 20 Dec 2018 17:58



Tgt Ion	Resp	Lower	Upper
83	1775680		
83	100		
55	90.0	57.2	85.8#
98	48.5	38.6	58.0





#40  
Benzene  
Concen: 870.285 ug/l  
RT: 8.32 min Scan# 1053  
Delta R.T. -0.00 min  
Lab File: VW007753.D  
Acq: 20 Dec 2018 17:58

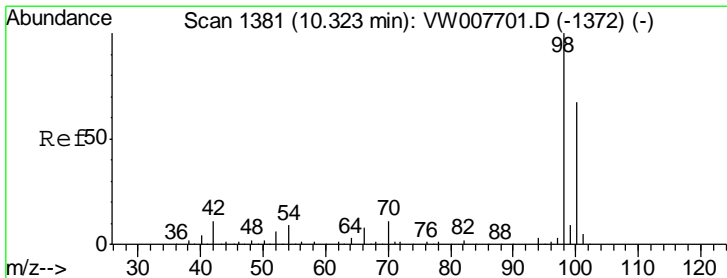
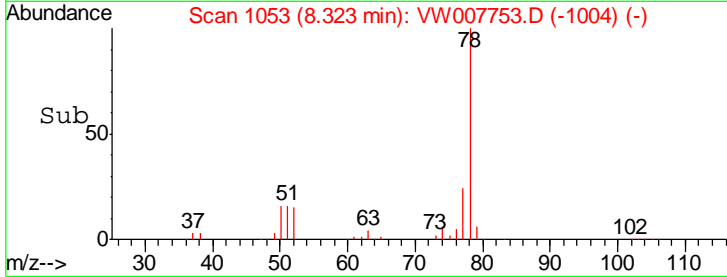
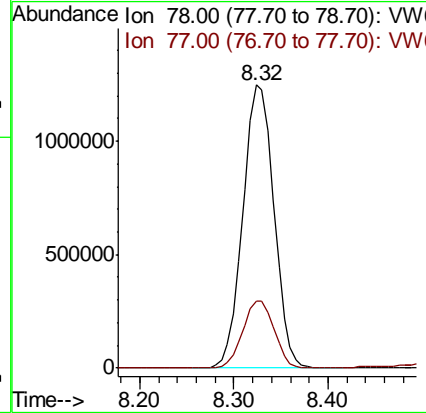
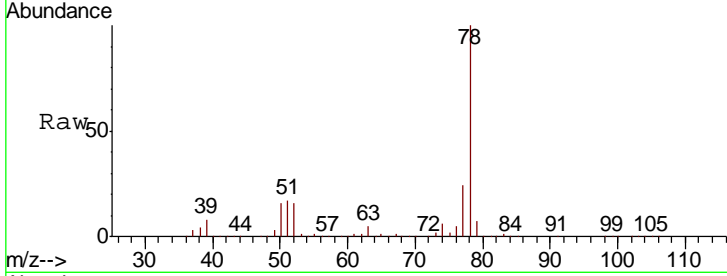
Instrument :  
MSVOA\_W  
ClientSampled :  
KY001SB104-121218-(24-26)

Tgt Ion: 78 Resp: 2858624

Ion	Ratio	Lower	Upper
78	100		
77	23.8	18.7	28.1

Manual Integrations  
APPROVED

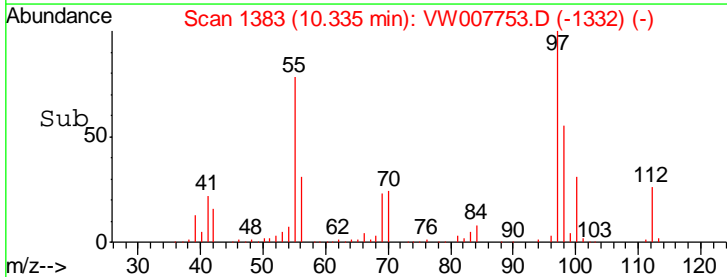
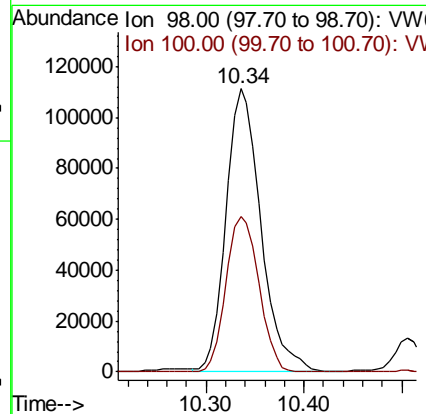
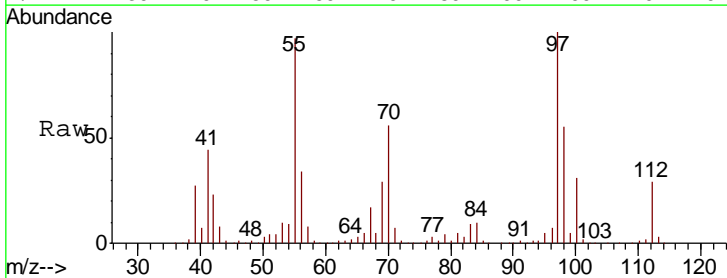
apatel  
12/21/2018 11:02:54 AM

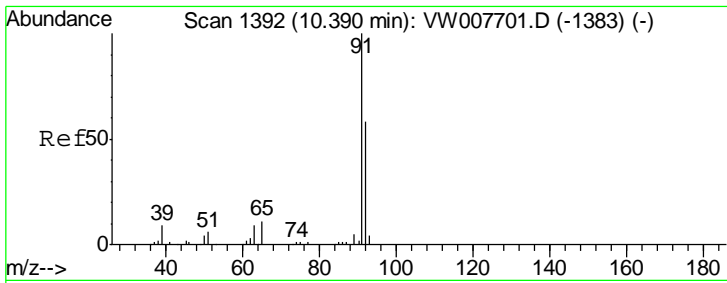


#50  
Toluene-d8  
Concen: 93.534 ug/l  
RT: 10.34 min Scan# 1383  
Delta R.T. 0.01 min  
Lab File: VW007753.D  
Acq: 20 Dec 2018 17:58

Tgt Ion: 98 Resp: 274336

Ion	Ratio	Lower	Upper
98	100		
100	52.2	52.2	78.2#



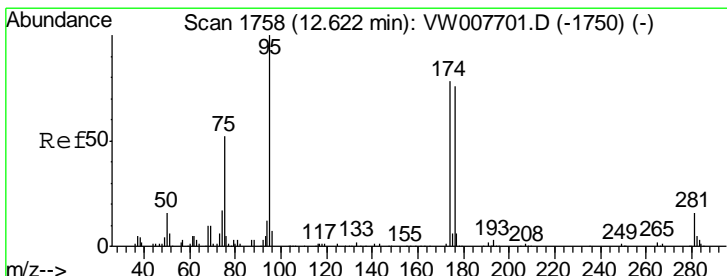
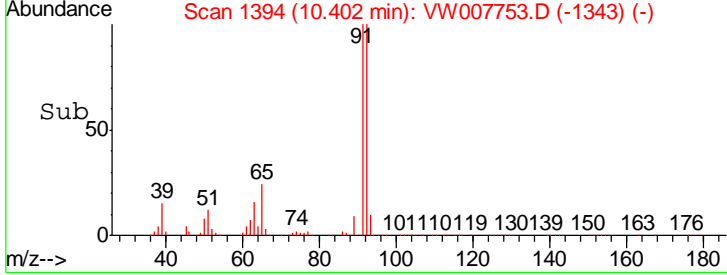
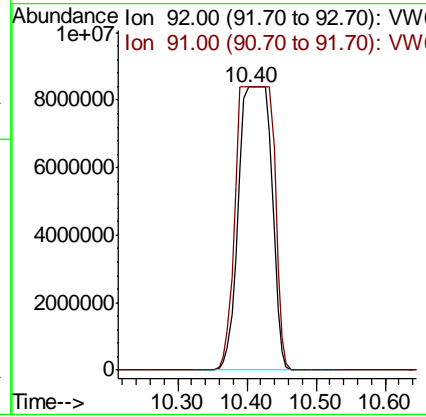
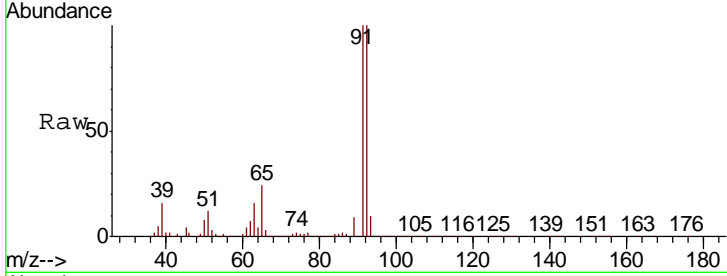


#52  
 Toluene  
 Concen: 12557.443 ug/l m  
 RT: 10.40 min Scan# 1394  
 Delta R.T. 0.01 min  
 Lab File: VW007753.D  
 Acq: 20 Dec 2018 17:58

Instrument :  
 MSVOA\_W  
 ClientSampled :  
 KY001SB104-121218-(24-26)

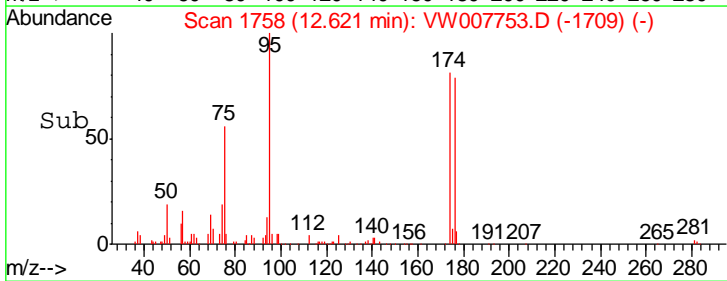
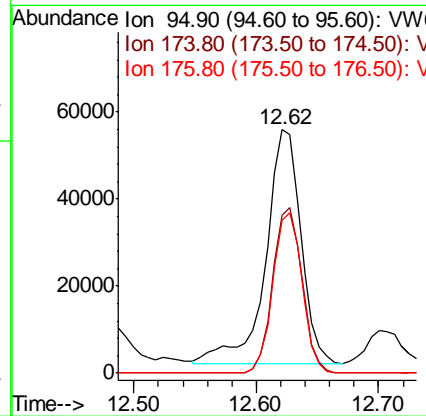
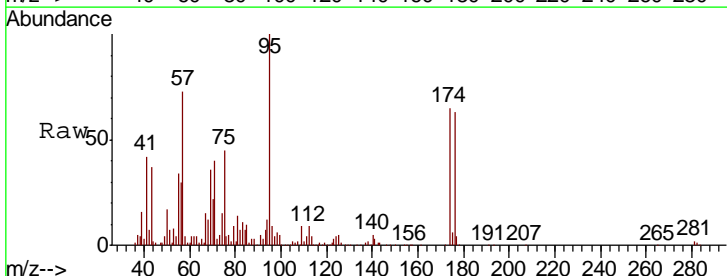
Tgt Ion: 92 Resp: 27674215  
 Ion Ratio Lower Upper  
 92 100  
 91 0.0 137.0 205.4#

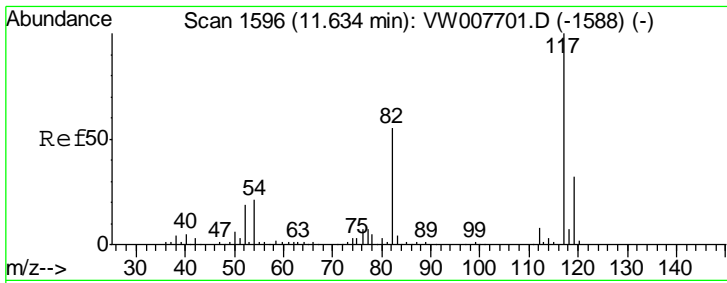
Manual Integrations  
**APPROVED**  
 apatel  
 12/21/2018 11:02:54 AM



#62  
 4-Bromofluorobenzene  
 Concen: 94.777 ug/l  
 RT: 12.62 min Scan# 1758  
 Delta R.T. -0.00 min  
 Lab File: VW007753.D  
 Acq: 20 Dec 2018 17:58

Tgt Ion: 95 Resp: 107390  
 Ion Ratio Lower Upper  
 95 100  
 174 59.0 0.0 152.2  
 176 56.6 0.0 146.8



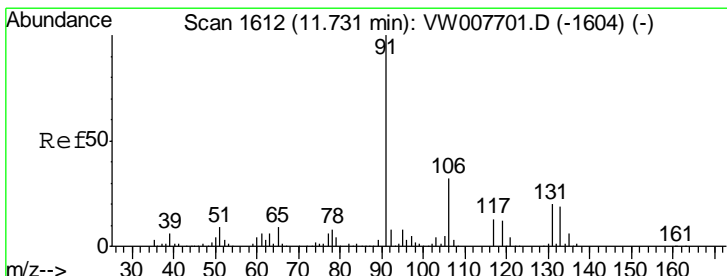
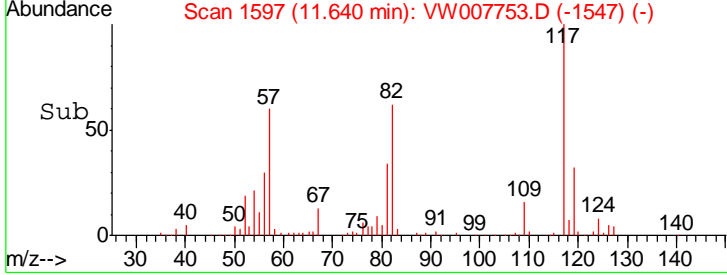
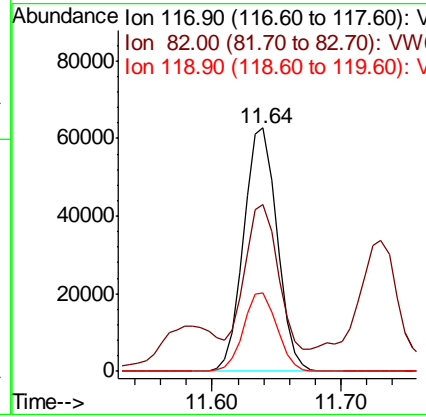
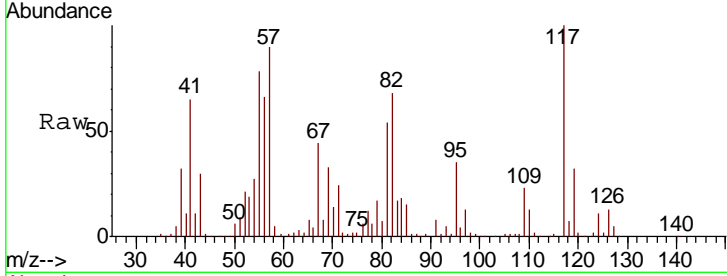


#63  
 Chlorobenzene-d5  
 Concen: 50.000 ug/l  
 RT: 11.64 min Scan# 1597  
 Delta R.T. 0.01 min  
 Lab File: VW007753.D  
 Acq: 20 Dec 2018 17:58

**Instrument :**  
 MSVOA\_W  
**ClientSampled :**  
 KY001SB104-121218-(24-26)

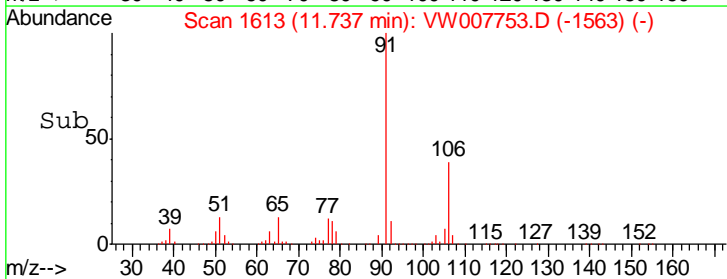
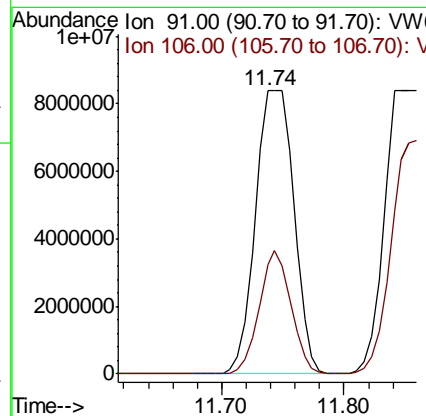
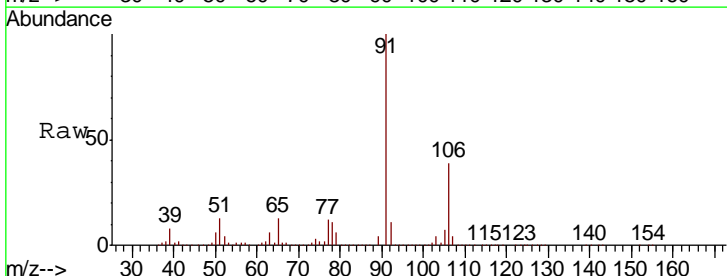
Tgt Ion	Resp	Lower	Upper
117	112267		
82	56.0	44.3	66.5
119	32.2	25.7	38.5

**Manual Integrations**  
**APPROVED**  
 apatel  
 12/21/2018 11:02:54 AM

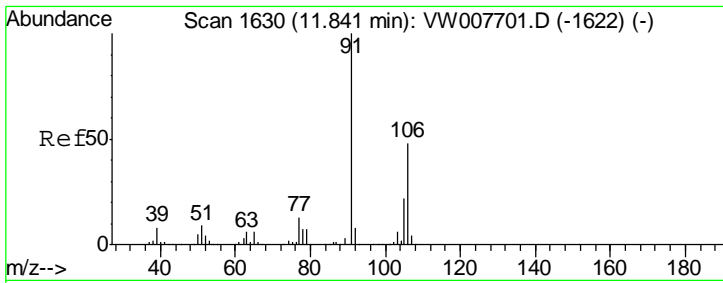


#67  
 Ethyl Benzene  
 Concen: 4403.449 ug/l  
 RT: 11.74 min Scan# 1613  
 Delta R.T. 0.01 min  
 Lab File: VW007753.D  
 Acq: 20 Dec 2018 17:58

Tgt Ion	Resp	Lower	Upper
91	18361331		
106	38.8	25.8	38.8#





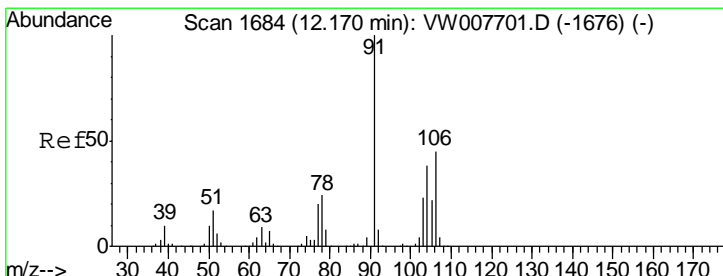
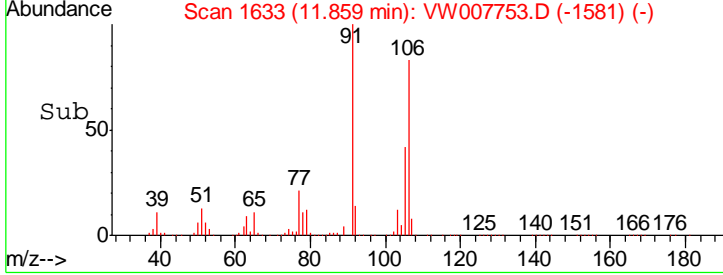
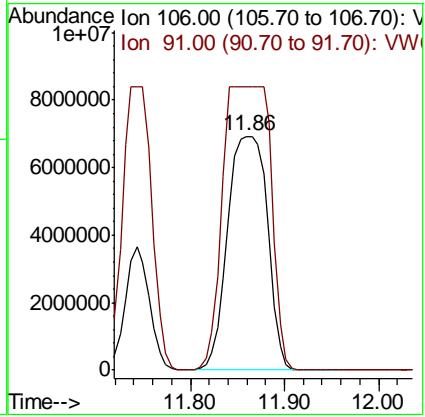
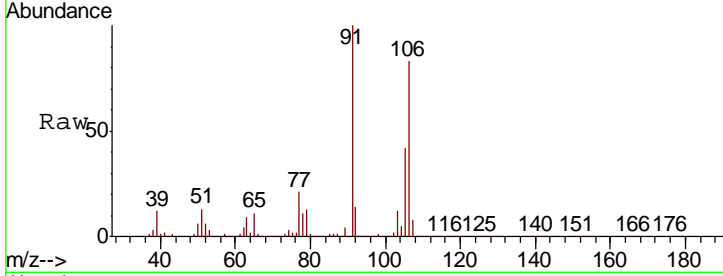


#68  
 m/p-Xylenes  
 Concen: 12593.741 ug/l  
 RT: 11.86 min Scan# 1633  
 Delta R.T. 0.02 min  
 Lab File: VW007753.D  
 Acq: 20 Dec 2018 17:58

**Instrument :**  
 MSVOA\_W  
**Client Sampled :**  
 KY001SB104-121218-(24-26)

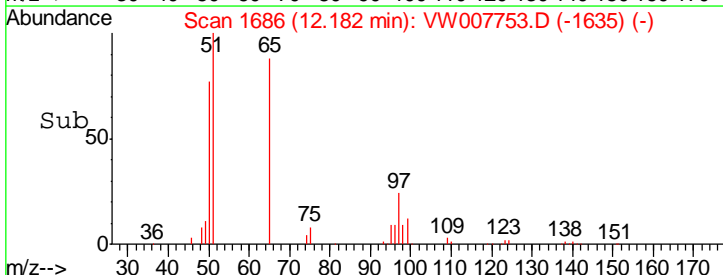
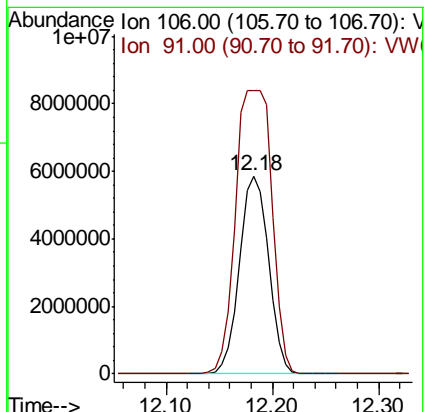
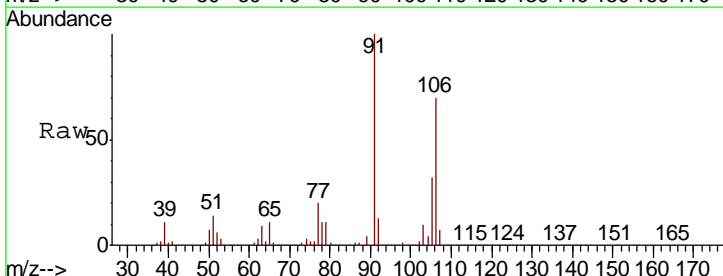
Tgt Ion:106 Resp:20370516  
 Ion Ratio Lower Upper  
 106 100  
 91 0.0 165.2 247.8#

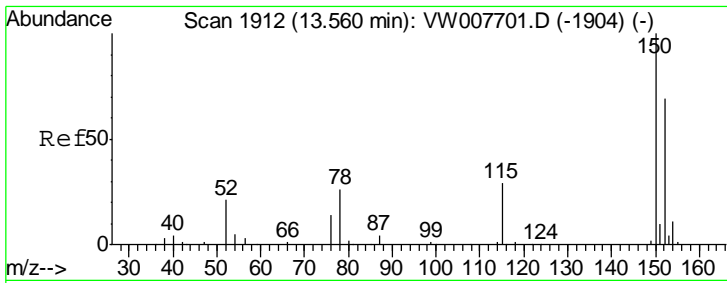
**Manual Integrations**  
**APPROVED**  
 apatel  
 12/21/2018 11:02:54 AM



#69  
 o-Xylene  
 Concen: 7444.707 ug/l  
 RT: 12.18 min Scan# 1686  
 Delta R.T. 0.01 min  
 Lab File: VW007753.D  
 Acq: 20 Dec 2018 17:58

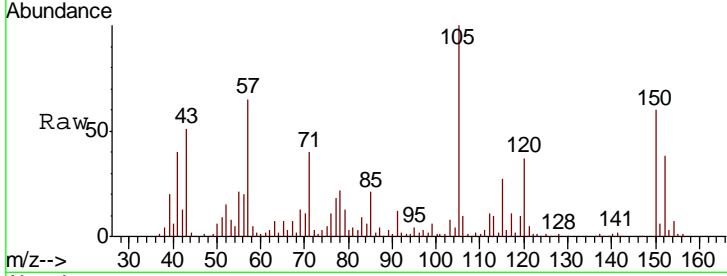
Tgt Ion:106 Resp:11287734  
 Ion Ratio Lower Upper  
 106 100  
 91 178.8 110.5 331.4





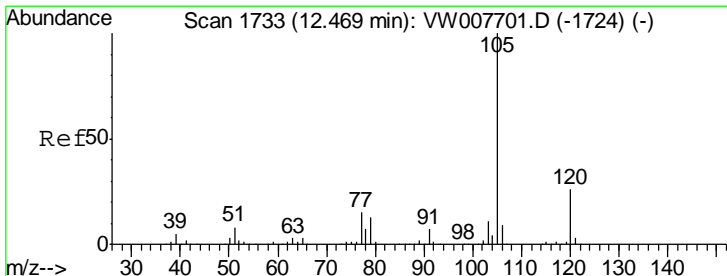
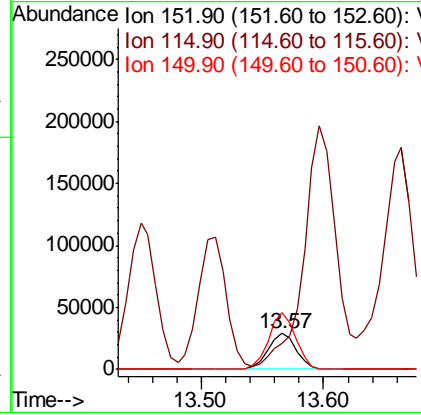
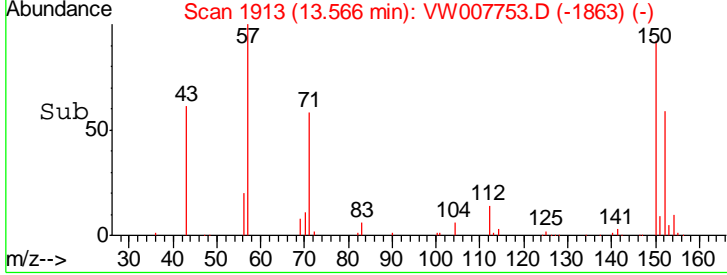
#72  
 1,4-Dichlorobenzene-d4  
 Concen: 50.000 ug/l  
 RT: 13.57 min Scan# 1913  
 Delta R.T. 0.01 min  
 Lab File: VW007753.D  
 Acq: 20 Dec 2018 17:58

**Instrument :**  
 MSVOA\_W  
**Client Sampled :**  
 KY001SB104-121218-(24-26)

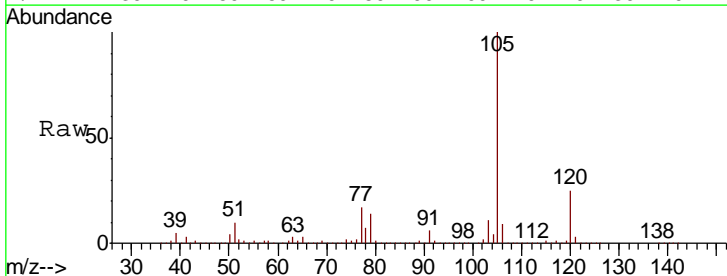


Tgt Ion	Resp	Lower	Upper
152	46461		
152	100		
115	0.0	31.8	95.4#
150	151.3	0.0	350.8

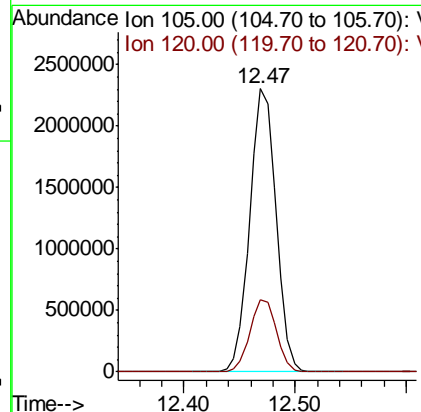
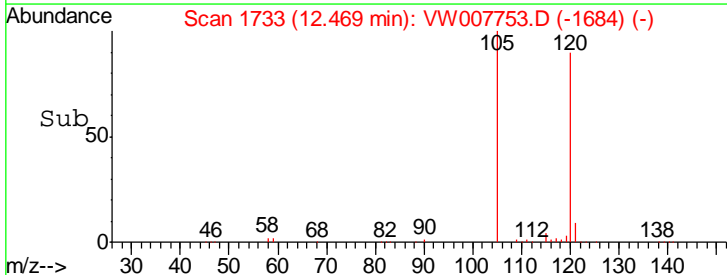
**Manual Integrations**  
**APPROVED**  
 apatel  
 12/21/2018 11:02:54 AM

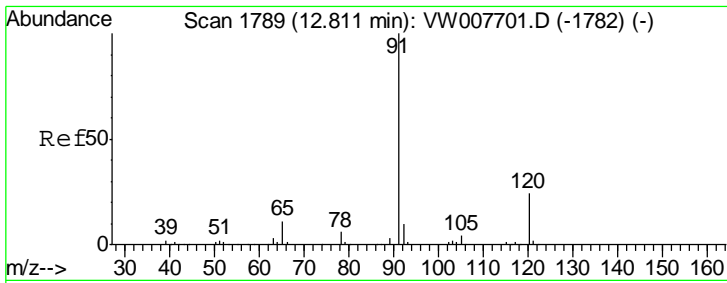


#73  
 Isopropylbenzene  
 Concen: 1077.326 ug/l  
 RT: 12.47 min Scan# 1733  
 Delta R.T. -0.00 min  
 Lab File: VW007753.D  
 Acq: 20 Dec 2018 17:58



Tgt Ion	Resp	Lower	Upper
105	3783496		
105	100		
120	25.8	13.1	39.3





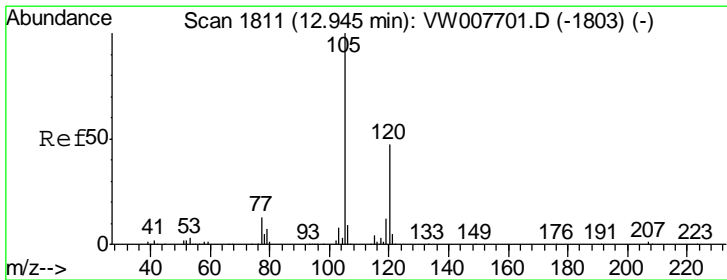
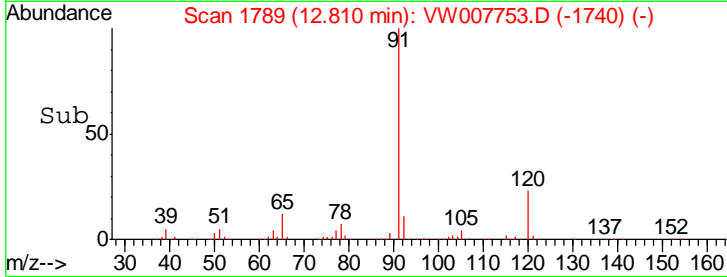
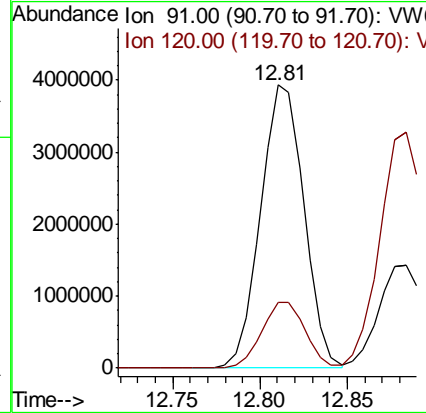
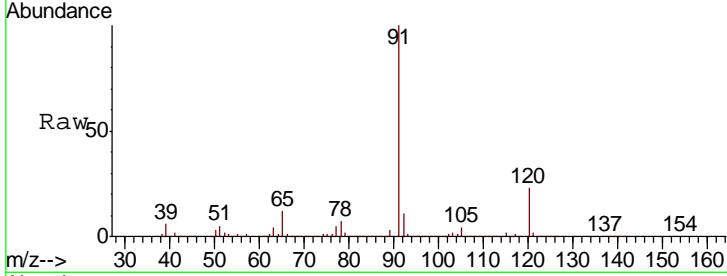
#78  
 n-propylbenzene  
 Concen: 1657.102 ug/l  
 RT: 12.81 min Scan# 1789  
 Delta R.T. -0.00 min  
 Lab File: VW007753.D  
 Acq: 20 Dec 2018 17:58

Instrument :  
 MSVOA\_W  
 ClientSampled :  
 KY001SB104-121218-(24-26)

Tgt Ion: 91 Resp: 6774425  
 Ion Ratio Lower Upper  
 91 100  
 120 23.6 11.9 35.7

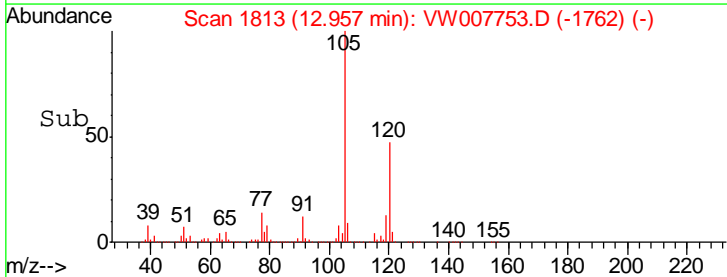
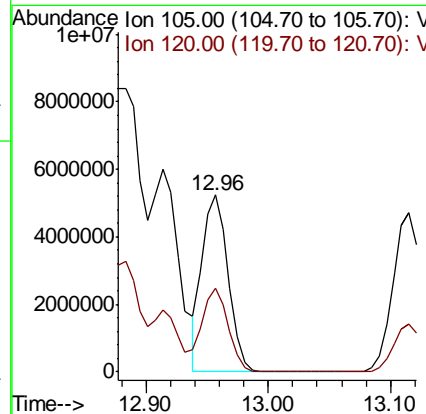
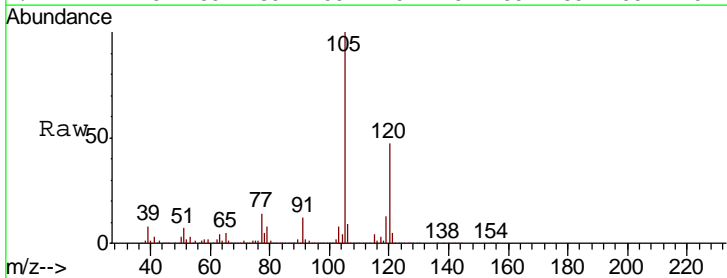
Manual Integrations  
 APPROVED

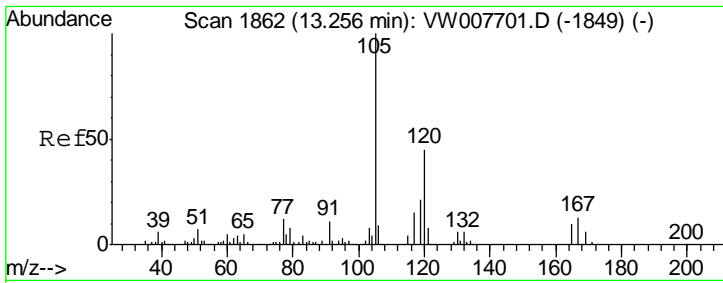
apatel  
 12/21/2018 11:02:54 AM



#80  
 1,3,5-Trimethylbenzene  
 Concen: 2529.608 ug/l  
 RT: 12.96 min Scan# 1813  
 Delta R.T. 0.01 min  
 Lab File: VW007753.D  
 Acq: 20 Dec 2018 17:58

Tgt Ion: 105 Resp: 7662931  
 Ion Ratio Lower Upper  
 105 100  
 120 49.8 23.6 70.8



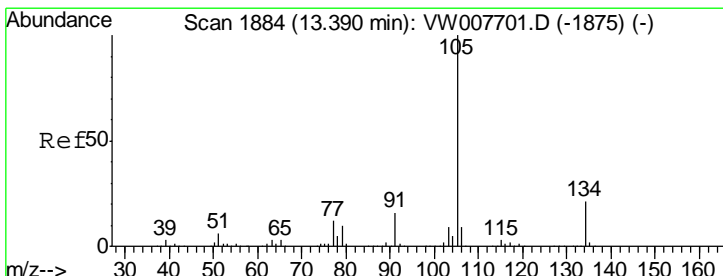
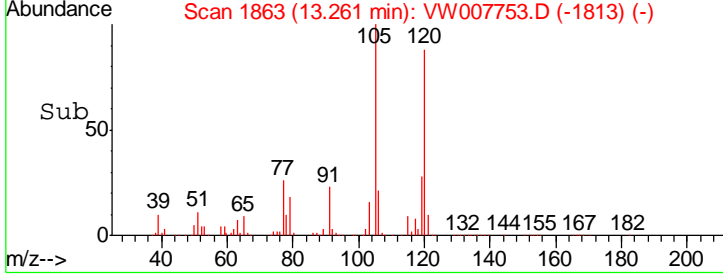
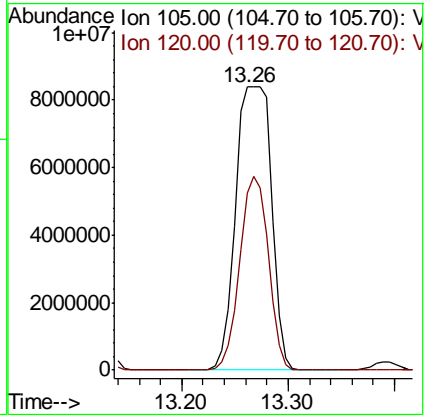
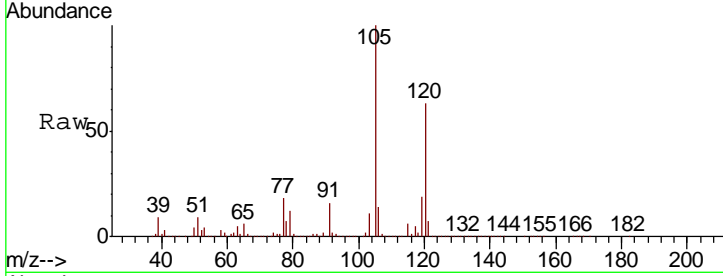


#84  
 1,2,4-Trimethylbenzene  
 Concen: 6484.933 ug/l  
 RT: 13.26 min Scan# 1863  
 Delta R.T. 0.01 min  
 Lab File: VW007753.D  
 Acq: 20 Dec 2018 17:58

Instrument : MSVOA\_W  
 ClientSampled : KY001SB104-121218-(24-26)

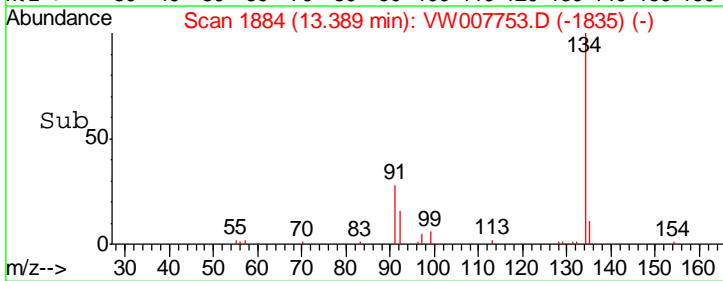
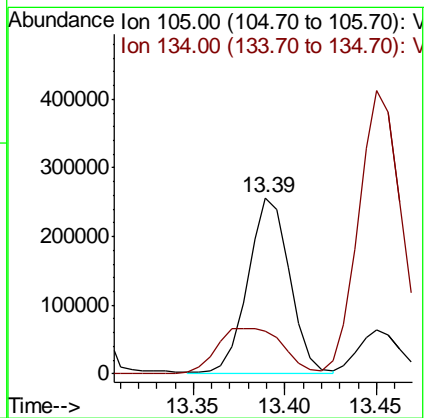
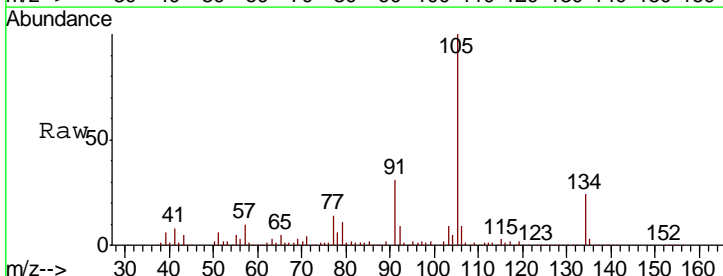
Tgt Ion	Resp	Lower	Upper
105	100		
120	55.0	22.0	66.0

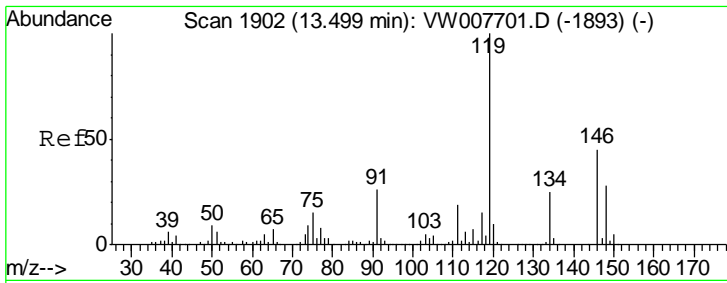
Manual Integrations  
**APPROVED**  
 apatel  
 12/21/2018 11:02:54 AM



#85  
 sec-Butylbenzene  
 Concen: 111.933 ug/l m  
 RT: 13.39 min Scan# 1884  
 Delta R.T. -0.00 min  
 Lab File: VW007753.D  
 Acq: 20 Dec 2018 17:58

Tgt Ion	Resp	Lower	Upper
105	100		
134	0.0	10.2	30.4#





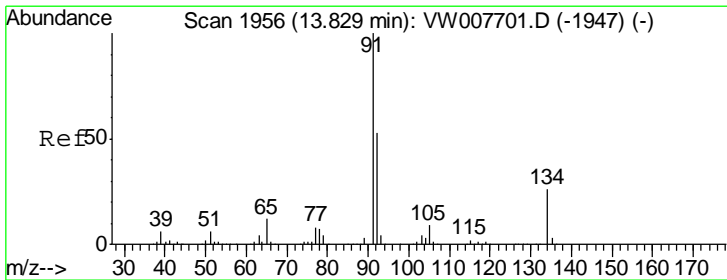
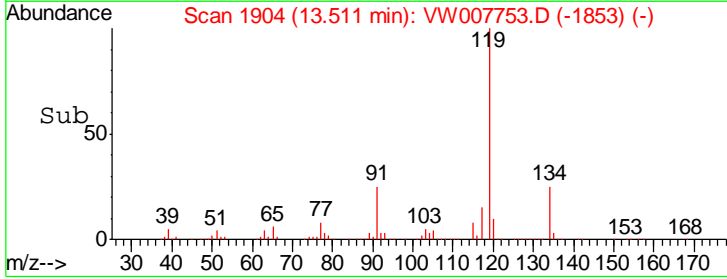
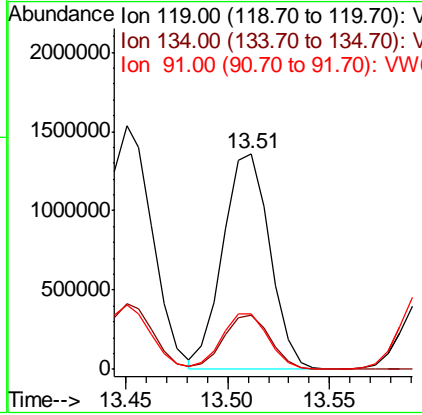
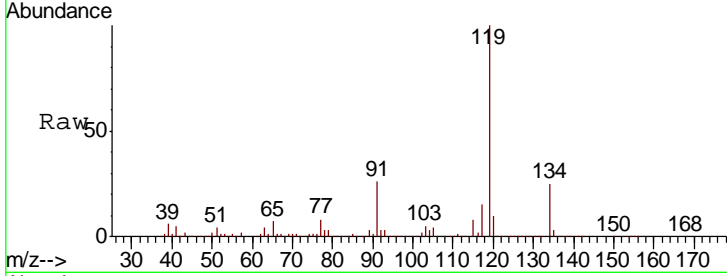
#86  
 p-Isopropyltoluene  
 Concen: 649.237 ug/l  
 RT: 13.51 min Scan# 1904  
 Delta R.T. 0.01 min  
 Lab File: VW007753.D  
 Acq: 20 Dec 2018 17:58

Instrument : MSVOA\_W  
 ClientSampled : KY001SB104-121218-(24-26)

Tgt Ion	Resp	Lower	Upper
119	100		
134	25.1	13.0	39.0
91	25.6	12.8	38.4

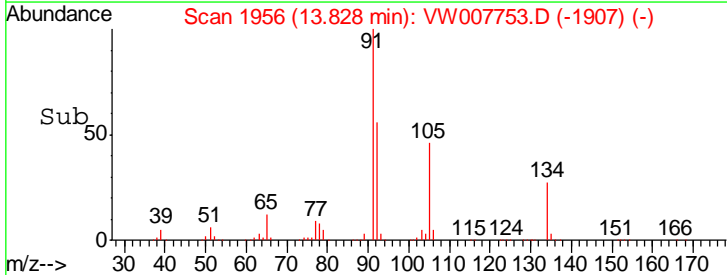
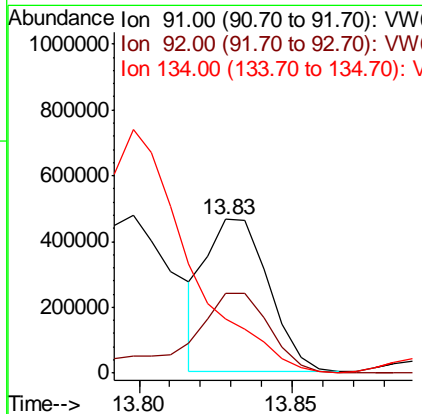
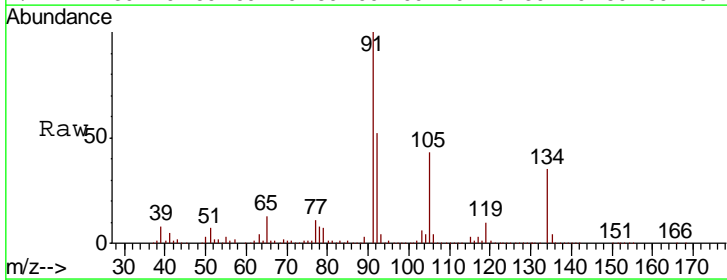
Manual Integrations  
 APPROVED

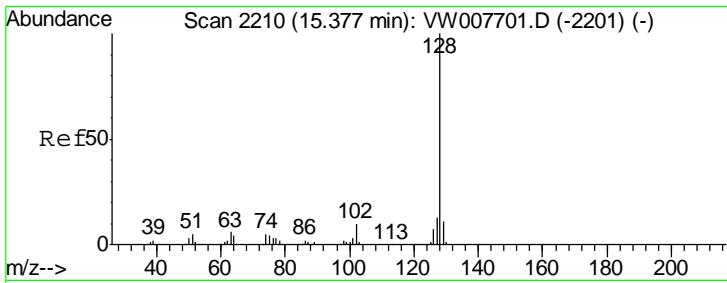
apatel  
 12/21/2018 11:02:54 AM



#89  
 n-Butylbenzene  
 Concen: 213.228 ug/l  
 RT: 13.83 min Scan# 1956  
 Delta R.T. -0.00 min  
 Lab File: VW007753.D  
 Acq: 20 Dec 2018 17:58

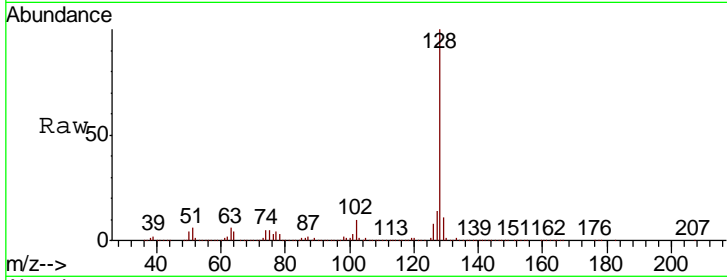
Tgt Ion	Resp	Lower	Upper
91	100		
92	67.9	26.4	79.2
134	0.0	13.7	41.0#





#95  
 Naphthalene  
 Concen: 2396.490 ug/l  
 RT: 15.38 min Scan# 2210  
 Delta R.T. -0.00 min  
 Lab File: VW007753.D  
 Acq: 20 Dec 2018 17:58

Instrument : MSVOA\_W  
 ClientSampled : KY001SB104-121218-(24-26)



Tgt Ion:128 Resp: 4400411

Ion	Ratio	Lower	Upper
128	100		
127	13.7	10.7	16.1
129	11.1	8.8	13.2

Manual Integrations  
 APPROVED  
 apatel  
 12/21/2018 11:02:54 AM

