

Data Path : Z:\voasrv\HPCHEM1\MSVOA\_W\Data\VW122221\  
 Data File : VW021611.D  
 Acq On : 23 Dec 2021 14:03  
 Operator : SY/VA  
 Sample : M5174-07  
 Misc : 6.59g/10.0mL/MSVOA\_W/SOIL  
 ALS Vial : 1 Sample Multiplier: 1

Instrument :  
 MSVOA\_W  
 ClientSampleId :

Quant Time: Dec 24 00:33:26 2021  
 Quant Method : Z:\voasrv\HPCHEM1\MSVOA\_W\Method\SFAMWLM120921SMA.M  
 Quant Title : SFAM01.0  
 QLast Update : Fri Dec 24 00:28:54 2021  
 Response via : Initial Calibration

Compound	R.T.	QIon	Response	Conc	Units	Dev(Min)
-----						
Internal Standards						
1) 1,4-Difluorobenzene	8.848	114	84347	25.000	ug/L	# 0.00
28) Chlorobenzene-d5	11.628	117	53144	25.000	ug/L	0.00
58) 1,4-Dichlorobenzene-d4	13.554	152	12750	25.000	ug/L	0.00
System Monitoring Compounds						
4) Vinyl Chloride-d3	2.343	65	26729	17.400	ug/L	0.00
Spiked Amount	25.000	Range 30 - 150	Recovery	=	69.600%	
7) Chloroethane-d5	2.873	69	19913	19.608	ug/L	0.00
Spiked Amount	25.000	Range 30 - 150	Recovery	=	78.440%	
11) 1,1-Dichloroethene-d2	4.007	63	29519	14.413	ug/L	0.00
Spiked Amount	25.000	Range 45 - 110	Recovery	=	57.640%	
21) 2-Butanone-d5	7.086	46	20045	92.569	ug/L	-0.01
Spiked Amount	50.000	Range 20 - 135	Recovery	=	185.140%#	
24) Chloroform-d	7.647	84	55900	23.782	ug/L	0.00
Spiked Amount	25.000	Range 40 - 150	Recovery	=	95.120%	
26) 1,2-Dichloroethane-d4	8.305	65	37322	29.850	ug/L	0.00
Spiked Amount	25.000	Range 70 - 130	Recovery	=	119.400%	
32) Benzene-d6	8.275	84	94181	32.331	ug/L	0.00
Spiked Amount	25.000	Range 20 - 135	Recovery	=	129.320%	
36) 1,2-Dichloropropane-d6	9.274	67	29914	38.291	ug/L	0.00
Spiked Amount	25.000	Range 70 - 120	Recovery	=	153.160%#	
41) Toluene-d8	10.323	98	70103	23.553	ug/L	0.00
Spiked Amount	25.000	Range 30 - 130	Recovery	=	94.200%	
43) trans-1,3-Dichloroprop...	10.579	79	12166	33.821	ug/L	0.00
Spiked Amount	25.000	Range 30 - 135	Recovery	=	135.280%#	
47) 2-Hexanone-d5	10.920	63	16285	140.967	ug/L	0.00
Spiked Amount	50.000	Range 20 - 135	Recovery	=	281.940%#	
56) 1,1,2,2-Tetrachloroeth...	12.695	84	26834	39.956	ug/L	0.00
Spiked Amount	25.000	Range 45 - 120	Recovery	=	159.840%#	
66) 1,2-Dichlorobenzene-d4	13.853	152	10373	20.992	ug/L	0.00
Spiked Amount	25.000	Range 75 - 120	Recovery	=	83.960%	
-----						
Target Compounds						Qvalue
13) Acetone	4.153	43	23907	123.154	ug/L	93
17) trans-1,2-Dichloroethene	5.421	96	2387	2.109	ug/L	82
20) cis-1,2-Dichloroethene	7.165	96	1415	1.185	ug/L	65
22) 2-Butanone	7.177	43	4102	16.181	ug/L	# 26
33) Benzene	8.323	78	30918	10.680	ug/L	100
34) Trichloroethene	9.091	95	688	0.847	ug/L	91
35) Methylcyclohexane	9.341	83	801	0.598	ug/L	# 91
37) 1,2-Dichloropropane	9.274	63	3868	5.990	ug/L	# 88
39) cis-1,3-Dichloropropene	10.036	75	1082	1.063	ug/L	# 57
42) Toluene	10.390	91	33259	9.823	ug/L	95
48) 2-Hexanone	10.927	43	2209	8.657	ug/L	# 69
52) Ethylbenzene	11.731	91	5690	1.471	ug/L	100
53) m,p-Xylene	11.835	106	3216	2.060	ug/L	88
54) o-Xylene	12.164	106	1332	0.899	ug/L	92
61) 1,2,3-Trichloropropane	13.554	75	1327	7.151	ug/L	# 60
62) 1,3,5-Trimethylbenzene	13.585	105	614	0.416	ug/L	92
63) 1,2,4-Trimethylbenzene	13.585	105	614	0.422	ug/L	96
71) Naphthalene	15.359	128	2069	2.592	ug/L	# 93
-----						

Data Path : Z:\voasrv\HPCHEM1\MSVOA\_W\Data\VW122221\  
Data File : VW021611.D  
Acq On : 23 Dec 2021 14:03  
Operator : SY/VA  
Sample : M5174-07  
Misc : 6.59g/10.0mL/MSVOA\_W/SOIL  
ALS Vial : 1 Sample Multiplier: 1

Instrument :  
MSVOA\_W  
ClientSampleId :

Quant Time: Dec 24 00:33:26 2021  
Quant Method : Z:\voasrv\HPCHEM1\MSVOA\_W\Method\SFAMWLM120921SMA.M  
Quant Title : SFAM01.0  
QLast Update : Fri Dec 24 00:28:54 2021  
Response via : Initial Calibration

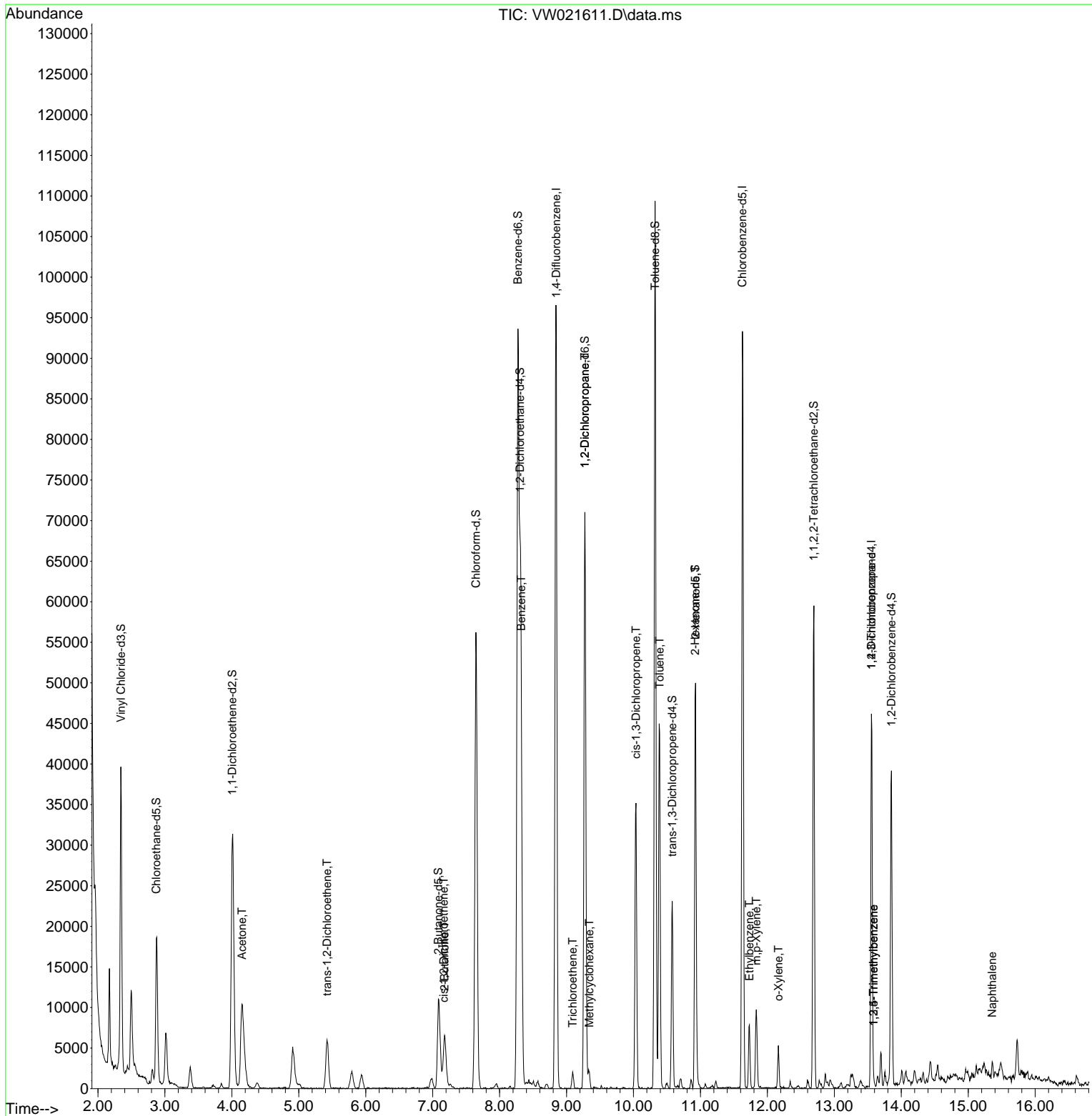
Compound	R.T.	QIon	Response	Conc	Units	Dev(Min)
----------	------	------	----------	------	-------	----------

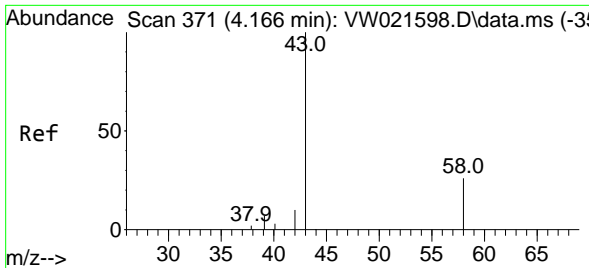
(#) = qualifier out of range (m) = manual integration (+) = signals summed

Data Path : Z:\voasrv\HPCHEM1\MSVOA\_W\Data\VW122221\  
 Data File : VW021611.D  
 Acq On : 23 Dec 2021 14:03  
 Operator : SY/VA  
 Sample : M5174-07  
 Misc : 6.59g/10.0mL/MSVOA\_W/SOIL  
 ALS Vial : 1 Sample Multiplier: 1

Instrument :  
 MSVOA\_W  
 ClientSampleId :

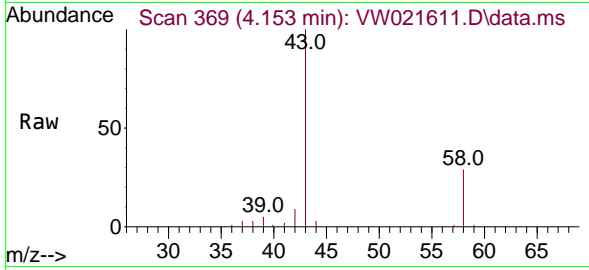
Quant Time: Dec 24 00:33:26 2021  
 Quant Method : Z:\voasrv\HPCHEM1\MSVOA\_W\Method\SFAMWLM120921SMA.M  
 Quant Title : SFAM01.0  
 QLast Update : Fri Dec 24 00:28:54 2021  
 Response via : Initial Calibration



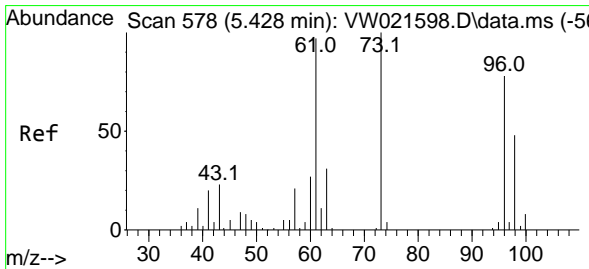
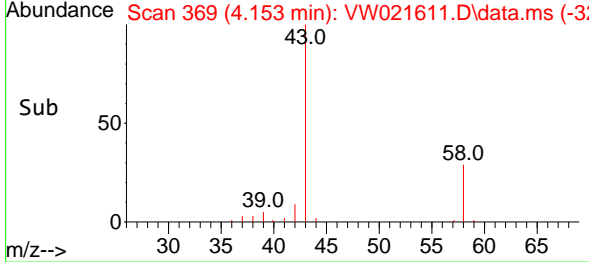
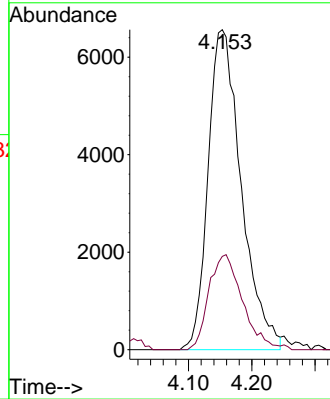


#13  
 Acetone  
 Concen: 123.154 ug/L  
 RT: 4.153 min Scan# 30  
 Delta R.T. -0.012 min  
 Lab File: VW021611.D  
 Acq: 23 Dec 2021 14:03

Instrument :  
 MSVOA\_W  
 ClientSampleId :

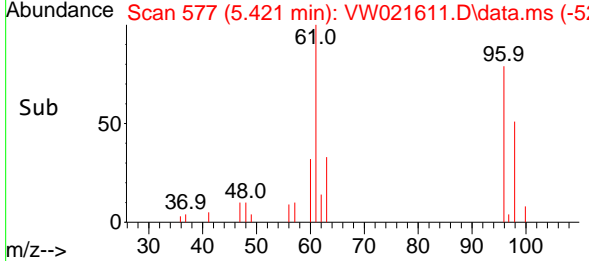
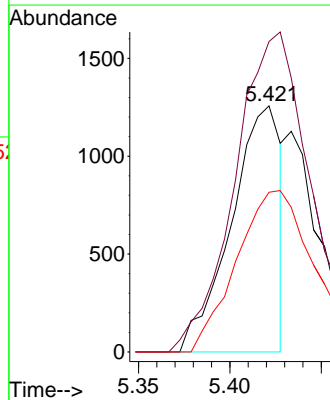
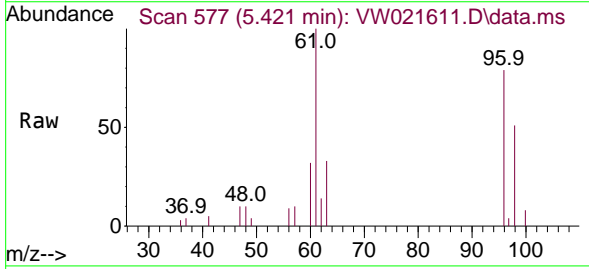


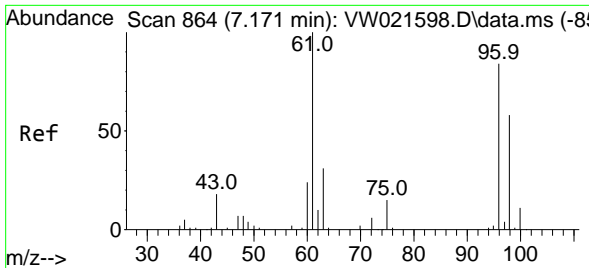
Tgt Ion: 43 Resp: 23907  
 Ion Ratio Lower Upper  
 43 100  
 58 30.0 0.0 52.8



#17  
 trans-1,2-Dichloroethene  
 Concen: 2.109 ug/L  
 RT: 5.421 min Scan# 577  
 Delta R.T. -0.006 min  
 Lab File: VW021611.D  
 Acq: 23 Dec 2021 14:03

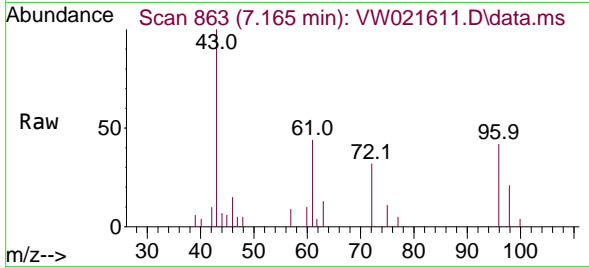
Tgt Ion: 96 Resp: 2387  
 Ion Ratio Lower Upper  
 96 100  
 61 126.2 107.4 199.4  
 98 64.9 41.2 76.6



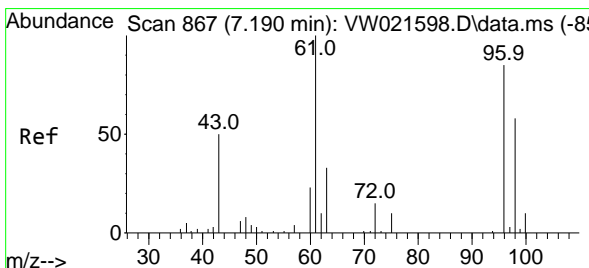
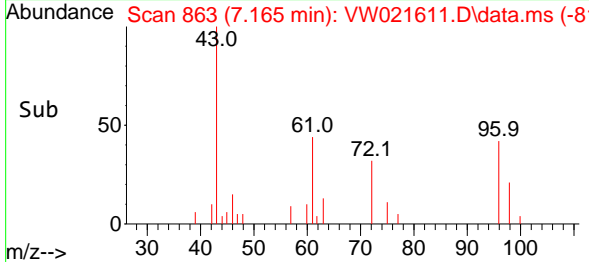
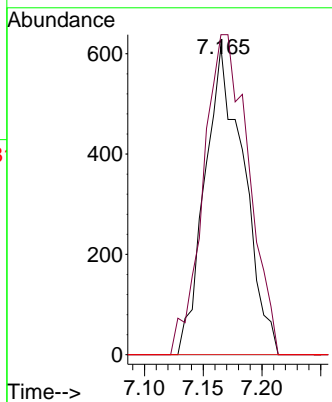


#20  
 cis-1,2-Dichloroethene  
 Concen: 1.185 ug/L  
 RT: 7.165 min Scan# 863  
 Delta R.T. -0.006 min  
 Lab File: VW021611.D  
 Acq: 23 Dec 2021 14:03

Instrument :  
 MSVOA\_W  
 ClientSampled :

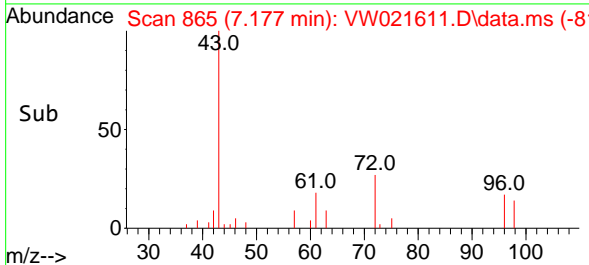
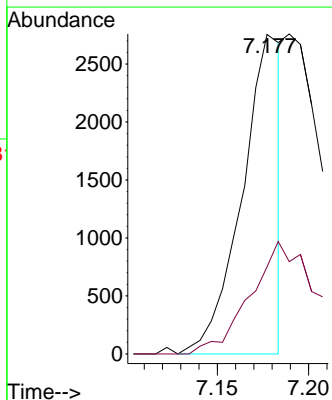
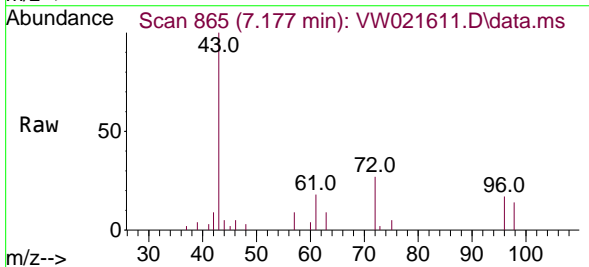


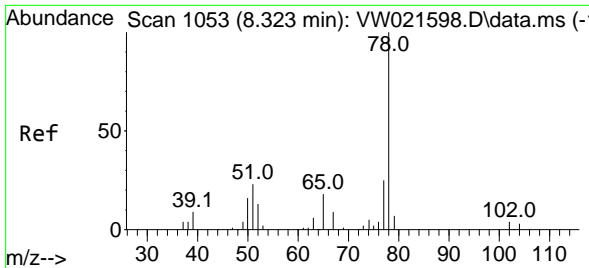
Tgt Ion: 96 Resp: 1415  
 Ion Ratio Lower Upper  
 96 100  
 61 103.9 103.7 192.7  
 68 0.0 0.0 0.0



#22  
 2-Butanone  
 Concen: 16.181 ug/L  
 RT: 7.177 min Scan# 865  
 Delta R.T. -0.012 min  
 Lab File: VW021611.D  
 Acq: 23 Dec 2021 14:03

Tgt Ion: 43 Resp: 4102  
 Ion Ratio Lower Upper  
 43 100  
 72 60.0 11.8 35.4#

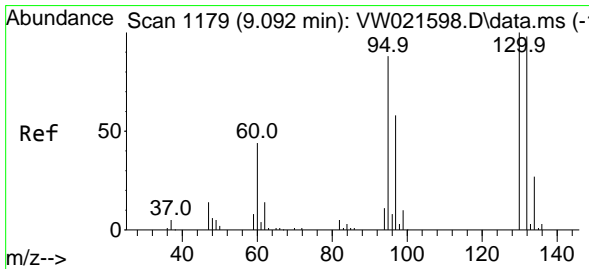
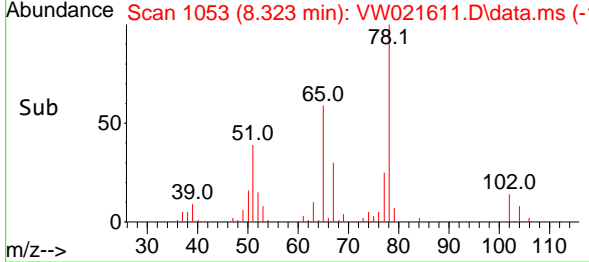
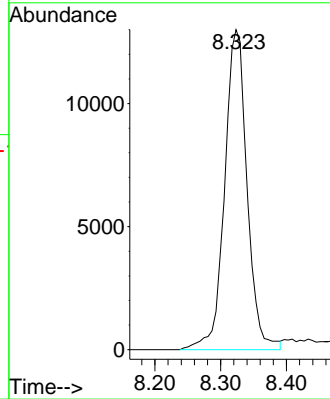
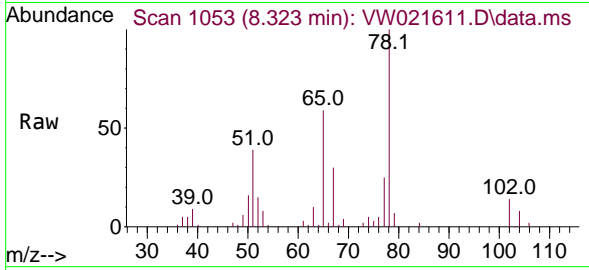




#33  
Benzene  
Concen: 10.680 ug/L  
RT: 8.323 min Scan# 1053  
Delta R.T. -0.000 min  
Lab File: VW021611.D  
Acq: 23 Dec 2021 14:03

Instrument : MSVOA\_W  
ClientSampleId :

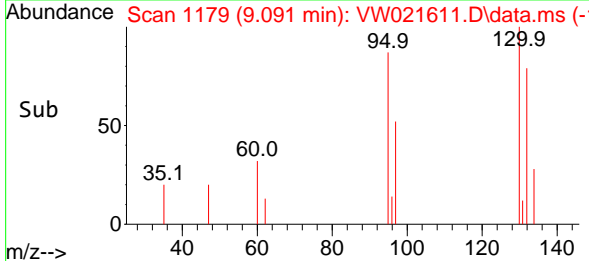
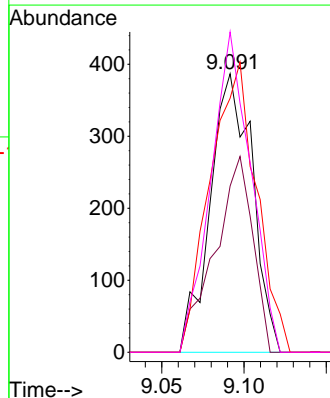
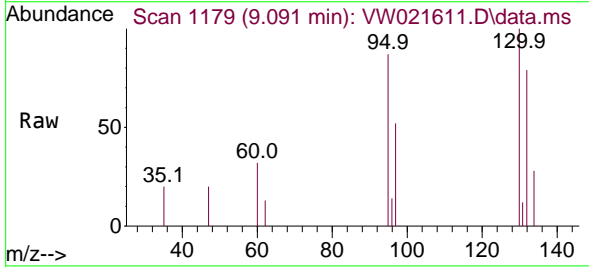
Tgt Ion: 78 Resp: 30918

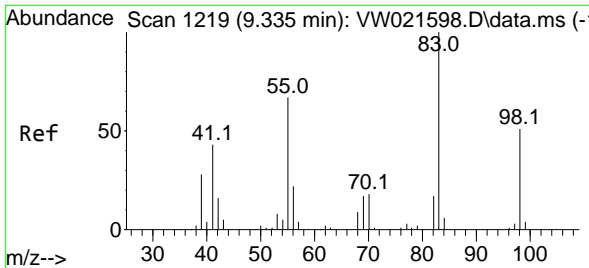


#34  
Trichloroethene  
Concen: 0.847 ug/L  
RT: 9.091 min Scan# 1179  
Delta R.T. -0.000 min  
Lab File: VW021611.D  
Acq: 23 Dec 2021 14:03

Tgt Ion: 95 Resp: 688

Ion	Ratio	Lower	Upper
95	100		
97	59.7	47.0	87.2
132	91.2	65.5	121.6
130	115.0	69.4	128.8

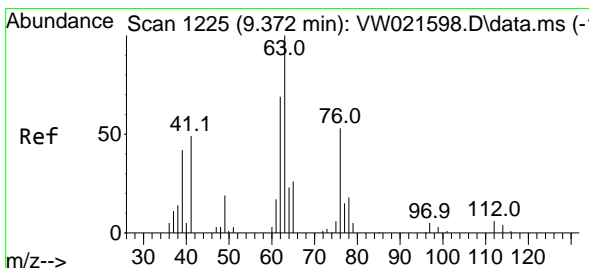
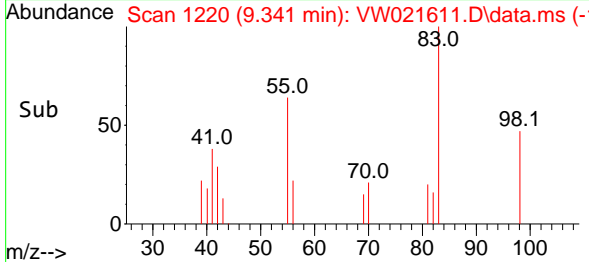
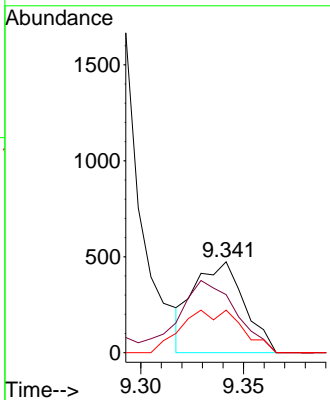
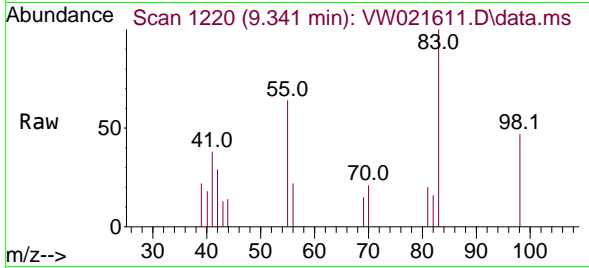




#35  
 Methylcyclohexane  
 Concen: 0.598 ug/L  
 RT: 9.341 min Scan# 11  
 Delta R.T. 0.006 min  
 Lab File: VW021611.D  
 Acq: 23 Dec 2021 14:03

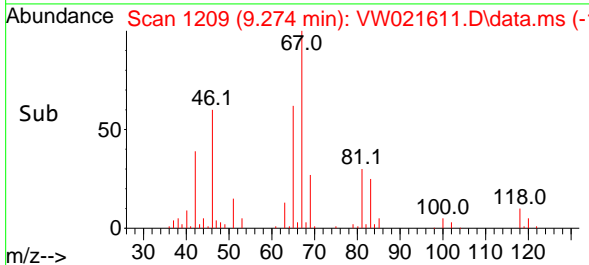
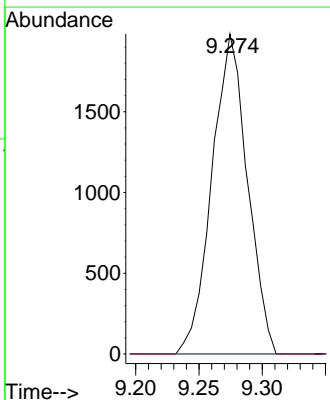
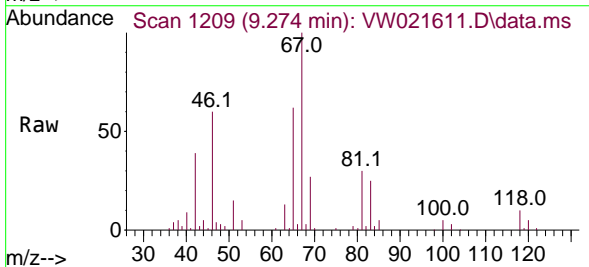
Instrument :  
 MSVOA\_W  
 ClientSampleId :

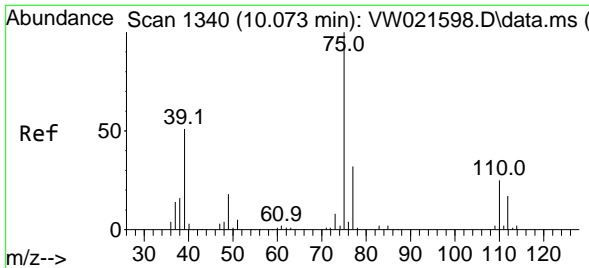
Tgt Ion: 83 Resp: 801  
 Ion Ratio Lower Upper  
 83 100  
 55 91.3 70.8 106.2  
 98 33.5 37.7 56.5#



#37  
 1,2-Dichloropropane  
 Concen: 5.990 ug/L  
 RT: 9.274 min Scan# 1209  
 Delta R.T. -0.098 min  
 Lab File: VW021611.D  
 Acq: 23 Dec 2021 14:03

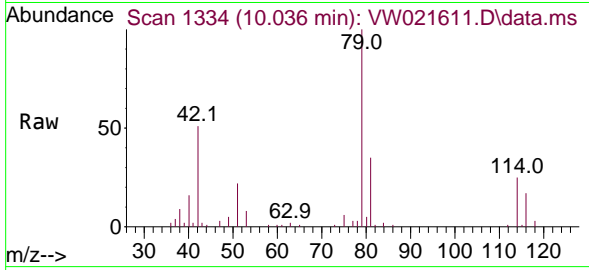
Tgt Ion: 63 Resp: 3868  
 Ion Ratio Lower Upper  
 63 100  
 112 0.0 3.2 4.8#



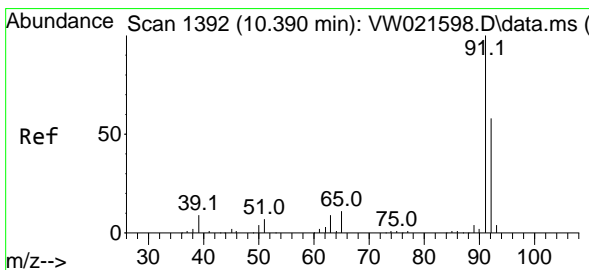
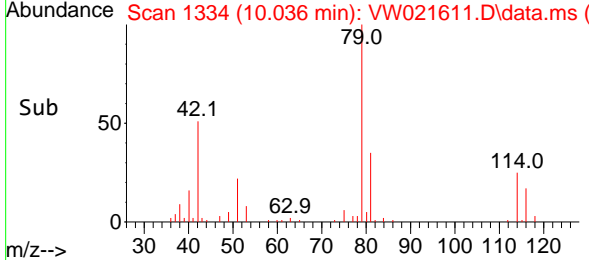
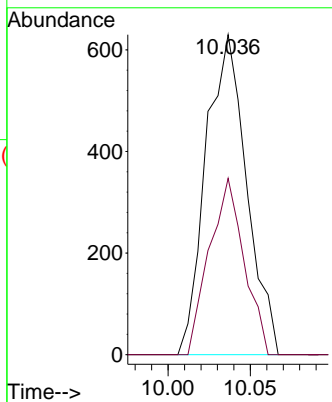


#39  
 cis-1,3-Dichloropropene  
 Concen: 1.063 ug/L  
 RT: 10.036 min Scan# 11  
 Delta R.T. -0.037 min  
 Lab File: VW021611.D  
 Acq: 23 Dec 2021 14:03

Instrument :  
 MSVOA\_W  
 ClientSampleId :

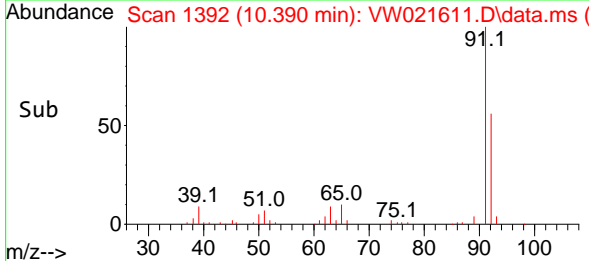
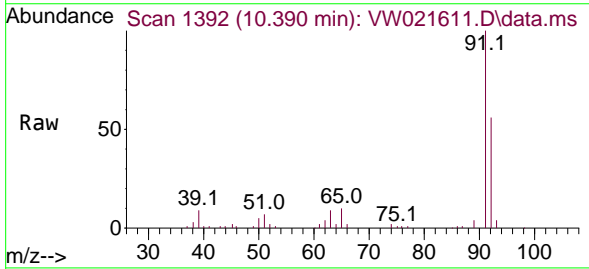
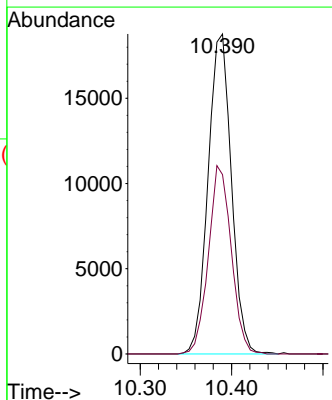


Tgt Ion: 75 Resp: 1082  
 Ion Ratio Lower Upper  
 75 100  
 77 55.1 21.8 40.6#

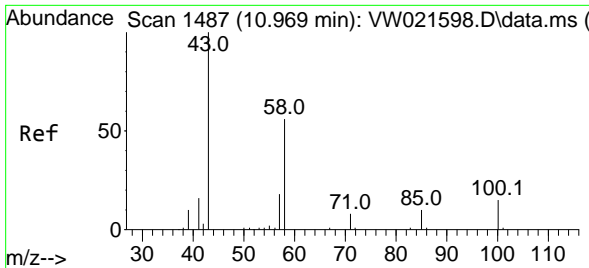


#42  
 Toluene  
 Concen: 9.823 ug/L  
 RT: 10.390 min Scan# 1392  
 Delta R.T. -0.000 min  
 Lab File: VW021611.D  
 Acq: 23 Dec 2021 14:03

Tgt Ion: 91 Resp: 33259  
 Ion Ratio Lower Upper  
 91 100  
 92 56.0 41.7 77.5

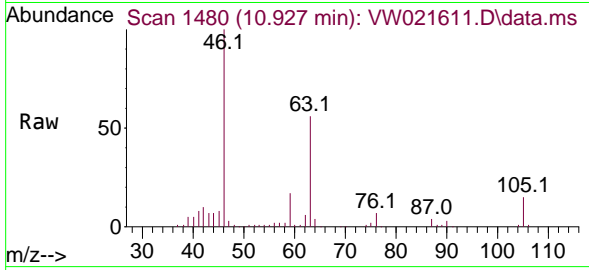






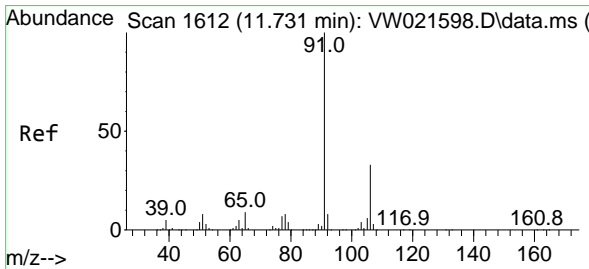
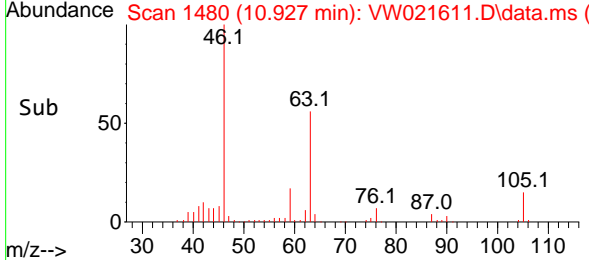
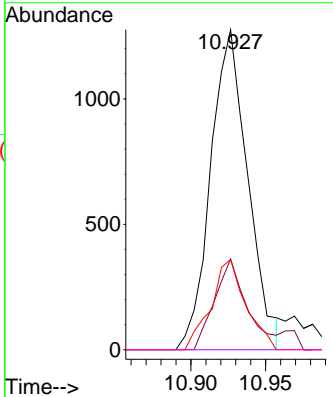
#48  
 2-Hexanone  
 Concen: 8.657 ug/L  
 RT: 10.927 min Scan# 1480  
 Delta R.T. -0.043 min  
 Lab File: VW021611.D  
 Acq: 23 Dec 2021 14:03

Instrument : MSVOA\_W  
 ClientSampleId :



Tgt Ion: 43 Resp: 2209

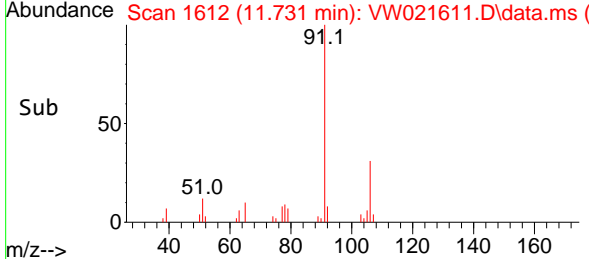
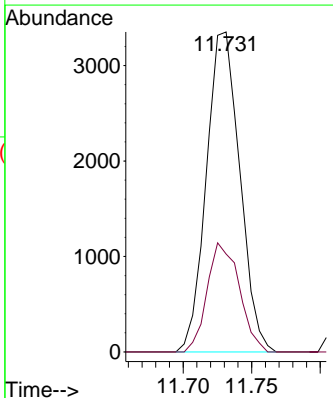
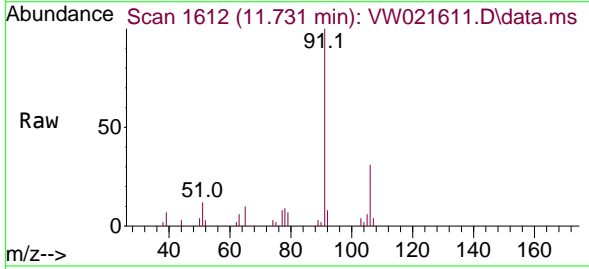
Ion	Ratio	Lower	Upper
43	100		
58	25.0	40.2	60.2#
57	26.3	14.3	21.5#
100	0.0	8.0	12.0#

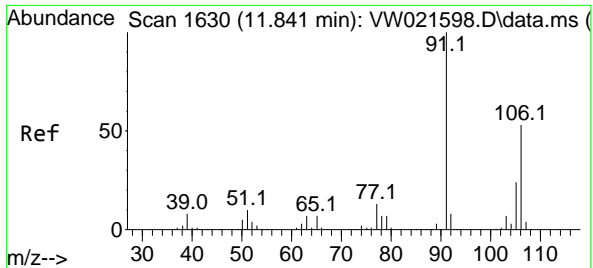


#52  
 Ethylbenzene  
 Concen: 1.471 ug/L  
 RT: 11.731 min Scan# 1612  
 Delta R.T. -0.000 min  
 Lab File: VW021611.D  
 Acq: 23 Dec 2021 14:03

Tgt Ion: 91 Resp: 5690

Ion	Ratio	Lower	Upper
91	100		
106	30.6	21.5	39.9

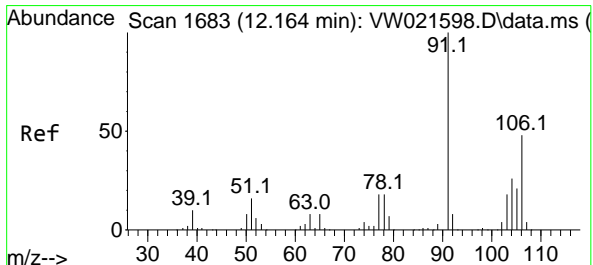
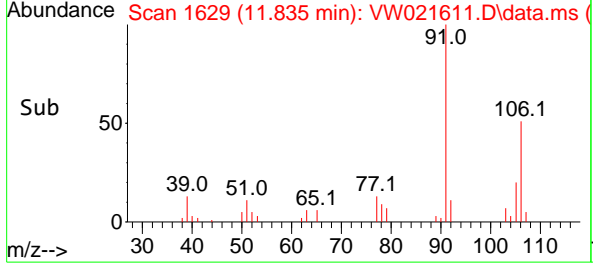
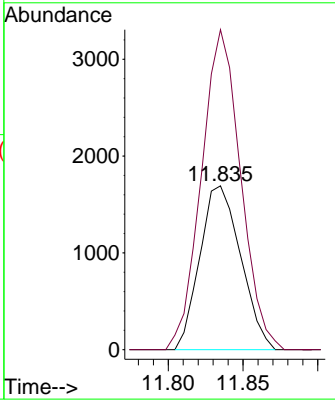
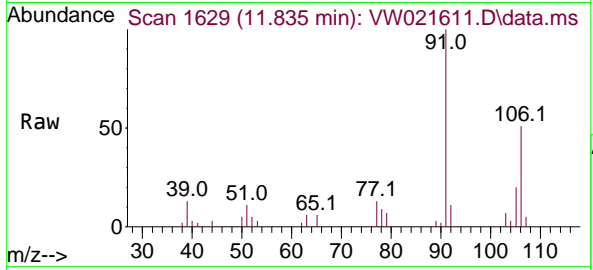




#53  
 m,p-Xylene  
 Concen: 2.060 ug/L  
 RT: 11.835 min Scan# 1629  
 Delta R.T. -0.006 min  
 Lab File: VW021611.D  
 Acq: 23 Dec 2021 14:03

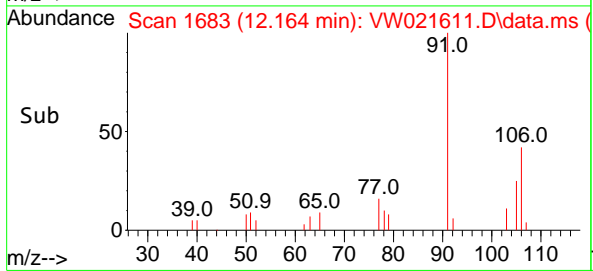
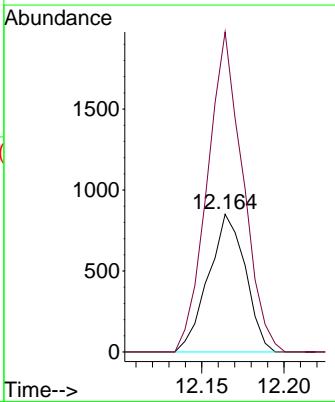
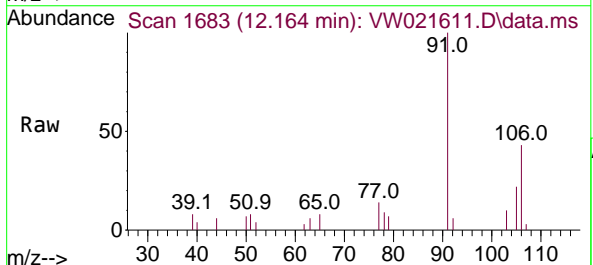
Instrument : MSVOA\_W  
 ClientSampled :

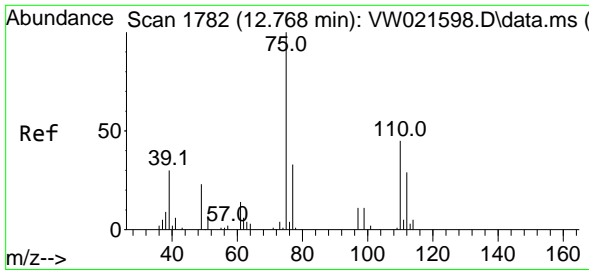
Tgt Ion:106 Resp: 3216  
 Ion Ratio Lower Upper  
 106 100  
 91 195.3 149.9 278.3



#54  
 o-Xylene  
 Concen: 0.899 ug/L  
 RT: 12.164 min Scan# 1683  
 Delta R.T. -0.000 min  
 Lab File: VW021611.D  
 Acq: 23 Dec 2021 14:03

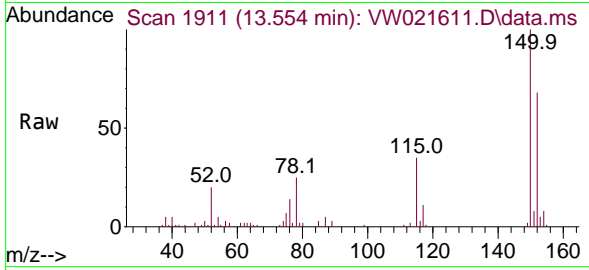
Tgt Ion:106 Resp: 1332  
 Ion Ratio Lower Upper  
 106 100  
 91 232.2 153.6 285.3



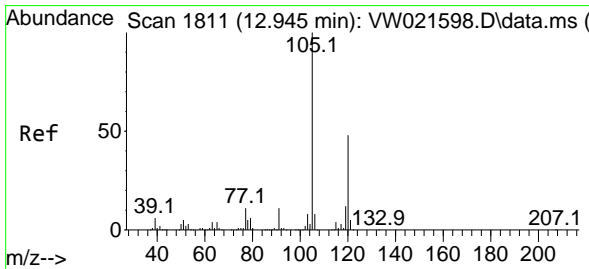
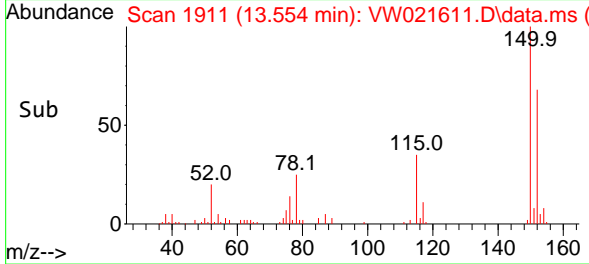
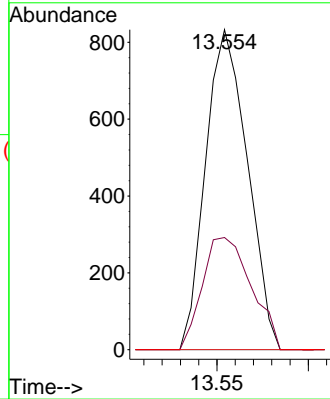


#61  
 1,2,3-Trichloropropane  
 Concen: 7.151 ug/L  
 RT: 13.554 min Scan# 1911  
 Delta R.T. 0.786 min  
 Lab File: VW021611.D  
 Acq: 23 Dec 2021 14:03

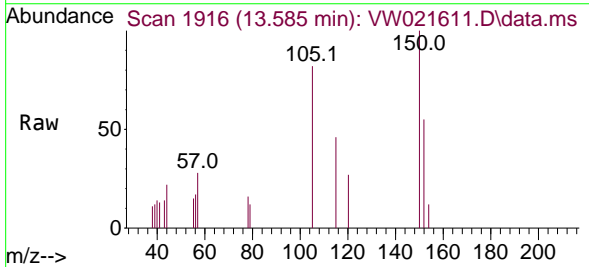
Instrument : MSVOA\_W  
 ClientSampleId :



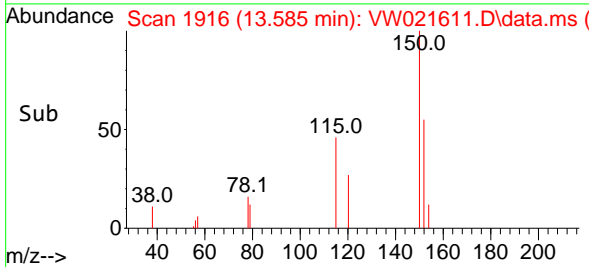
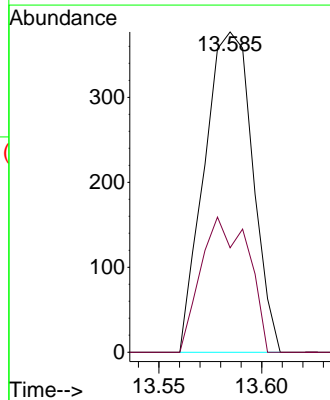
Tgt Ion	Resp	Lower	Upper
75	1327		
75	100		
77	41.1	25.8	38.8#
110	0.0	29.0	43.4#

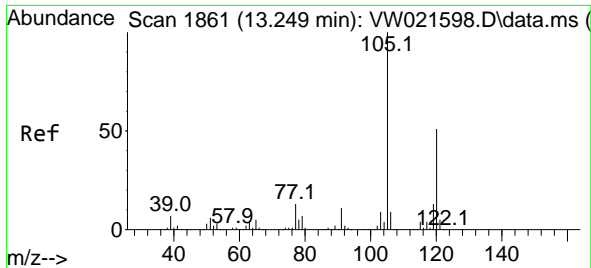


#62  
 1,3,5-Trimethylbenzene  
 Concen: 0.416 ug/L  
 RT: 13.585 min Scan# 1916  
 Delta R.T. 0.640 min  
 Lab File: VW021611.D  
 Acq: 23 Dec 2021 14:03



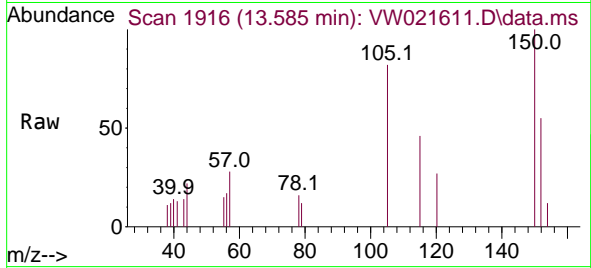
Tgt Ion	Resp	Lower	Upper
105	614		
105	100		
120	41.5	37.4	56.2



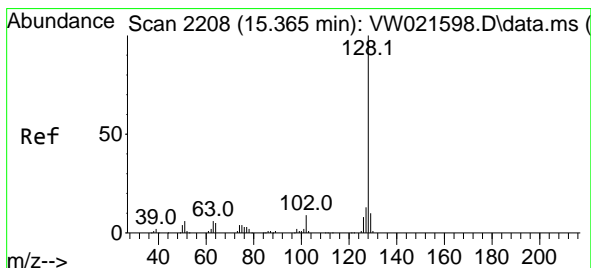
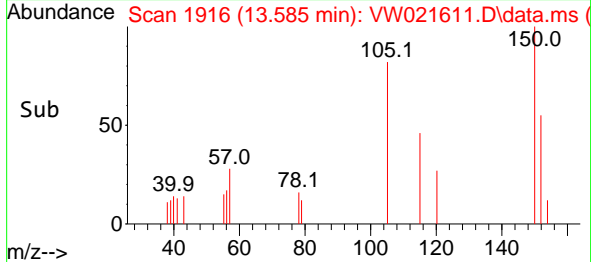
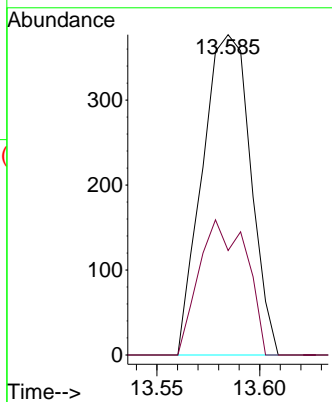


#63  
 1,2,4-Trimethylbenzene  
 Concen: 0.422 ug/L  
 RT: 13.585 min Scan# 1916  
 Delta R.T. 0.335 min  
 Lab File: VW021611.D  
 Acq: 23 Dec 2021 14:03

Instrument :  
 MSVOA\_W  
 ClientSampleId :



Tgt Ion:105 Resp: 614  
 Ion Ratio Lower Upper  
 105 100  
 120 41.5 35.0 52.6



#71  
 Naphthalene  
 Concen: 2.592 ug/L  
 RT: 15.359 min Scan# 2207  
 Delta R.T. -0.006 min  
 Lab File: VW021611.D  
 Acq: 23 Dec 2021 14:03

Tgt Ion:128 Resp: 2069  
 Ion Ratio Lower Upper  
 128 100  
 127 17.3 10.7 16.1#  
 129 9.2 8.6 12.8

