

Data Path : Z:\voasrv\HPCHEM1\MSVOA_W\Data\VW122221\
 Data File : VW021620.D
 Acq On : 23 Dec 2021 18:41
 Operator : SY/VA
 Sample : M5174-14
 Misc : 3.96g/10.0mL/MSVOA_W/SOIL
 ALS Vial : 1 Sample Multiplier: 1

Instrument :
 MSVOA_W
 ClientSampleId :
 GBC23

Quant Time: Dec 24 01:46:02 2021
 Quant Method : Z:\voasrv\HPCHEM1\MSVOA_W\Method\SFAMWLM120921SMA.M
 Quant Title : SFAM01.0
 QLast Update : Fri Dec 24 01:43:02 2021
 Response via : Initial Calibration

Compound	R.T.	QIon	Response	Conc	Units	Dev(Min)

Internal Standards						
1) 1,4-Difluorobenzene	8.841	114	101004	25.000	ug/L	# 0.00
28) Chlorobenzene-d5	11.634	117	97571	25.000	ug/L	0.00
58) 1,4-Dichlorobenzene-d4	13.554	152	50565	25.000	ug/L	0.00
System Monitoring Compounds						
4) Vinyl Chloride-d3	2.349	65	26916	14.632	ug/L	0.00
Spiked Amount	25.000	Range 30 - 150	Recovery	=	58.520%	
7) Chloroethane-d5	2.879	69	19690	16.191	ug/L	0.00
Spiked Amount	25.000	Range 30 - 150	Recovery	=	64.760%	
11) 1,1-Dichloroethene-d2	4.013	63	32532	13.265	ug/L	0.00
Spiked Amount	25.000	Range 45 - 110	Recovery	=	53.080%	
21) 2-Butanone-d5	7.086	46	16687	64.353	ug/L	-0.01
Spiked Amount	50.000	Range 20 - 135	Recovery	=	128.700%	
24) Chloroform-d	7.653	84	59388	21.099	ug/L	0.00
Spiked Amount	25.000	Range 40 - 150	Recovery	=	84.400%	
26) 1,2-Dichloroethane-d4	8.305	65	34211	22.849	ug/L	0.00
Spiked Amount	25.000	Range 70 - 130	Recovery	=	91.400%	
32) Benzene-d6	8.274	84	105977	19.815	ug/L	0.00
Spiked Amount	25.000	Range 20 - 135	Recovery	=	79.280%	
36) 1,2-Dichloropropane-d6	9.274	67	32342	22.549	ug/L	0.00
Spiked Amount	25.000	Range 70 - 120	Recovery	=	90.200%	
41) Toluene-d8	10.323	98	101713	18.613	ug/L	0.00
Spiked Amount	25.000	Range 30 - 130	Recovery	=	74.440%	
43) trans-1,3-Dichloroprop...	10.579	79	13650	20.668	ug/L	0.00
Spiked Amount	25.000	Range 30 - 135	Recovery	=	82.680%	
47) 2-Hexanone-d5	10.920	63	13802	65.074	ug/L	0.00
Spiked Amount	50.000	Range 20 - 135	Recovery	=	130.140%	
56) 1,1,2,2-Tetrachloroeth...	12.688	84	31355	25.430	ug/L	0.00
Spiked Amount	25.000	Range 45 - 120	Recovery	=	101.720%	
66) 1,2-Dichlorobenzene-d4	13.853	152	38589	19.692	ug/L	0.00
Spiked Amount	25.000	Range 75 - 120	Recovery	=	78.760%	

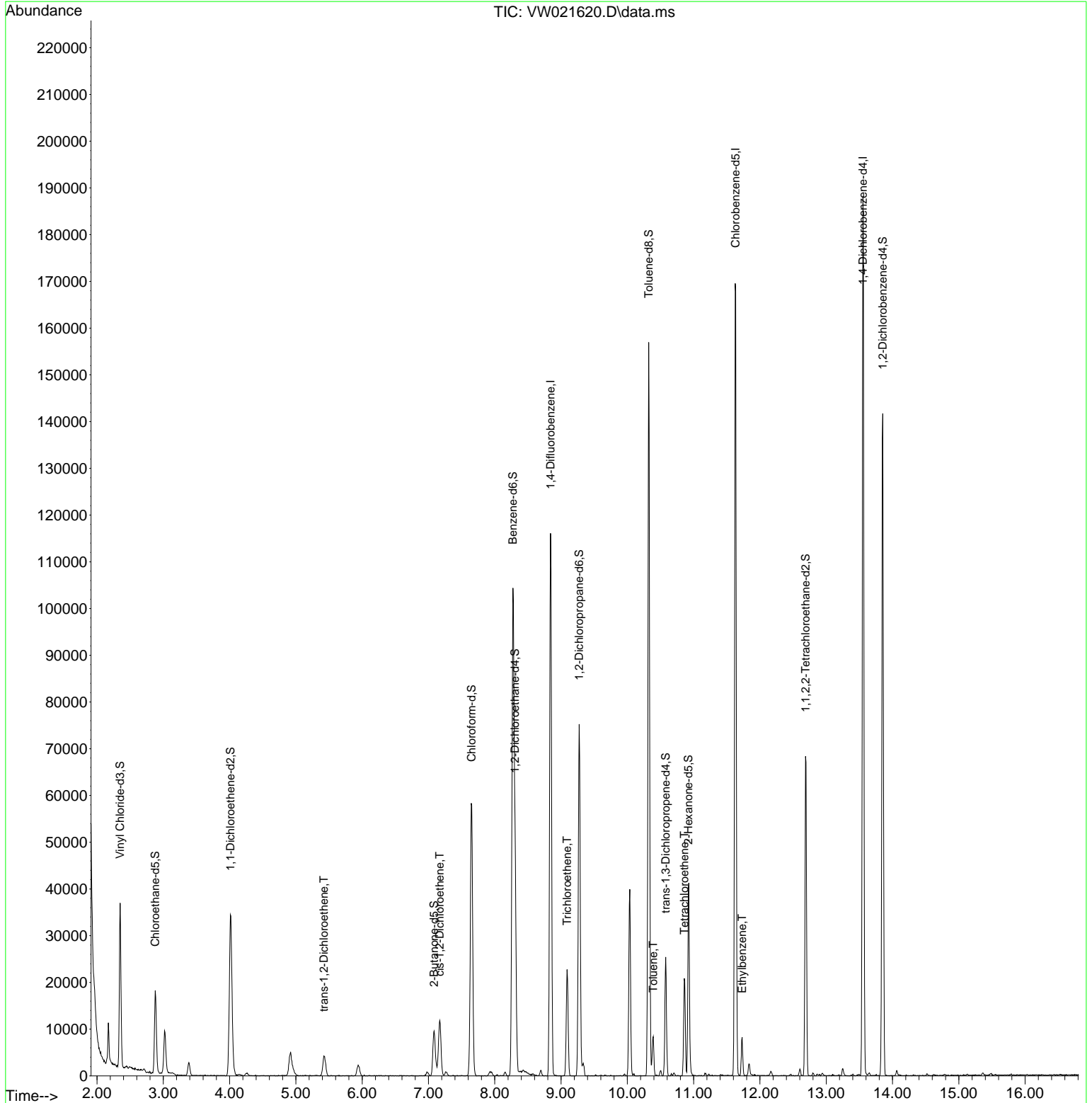
Target Compounds						Qvalue
17) trans-1,2-Dichloroethene	5.421	96	2602	1.919	ug/L	78
20) cis-1,2-Dichloroethene	7.171	96	7411	5.183	ug/L	80
34) Trichloroethene	9.091	95	7748	5.193	ug/L	94
42) Toluene	10.390	91	6413	1.032	ug/L	98
46) Tetrachloroethene	10.859	164	4879	3.442	ug/L	90
52) Ethylbenzene	11.731	91	5844	0.823	ug/L	99

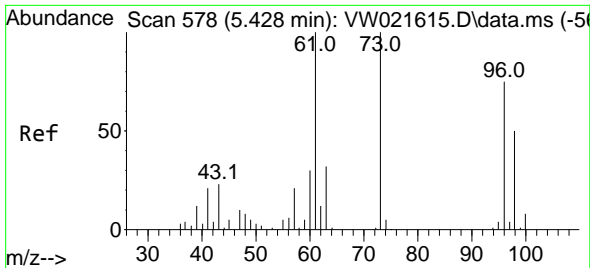
(#) = qualifier out of range (m) = manual integration (+) = signals summed

Data Path : Z:\voasrv\HPCHEM1\MSVOA_W\Data\VW122221\
 Data File : VW021620.D
 Acq On : 23 Dec 2021 18:41
 Operator : SY/VA
 Sample : M5174-14
 Misc : 3.96g/10.0mL/MSVOA_W/SOIL
 ALS Vial : 1 Sample Multiplier: 1

Instrument :
 MSVOA_W
 ClientSampleId :
 GBC23

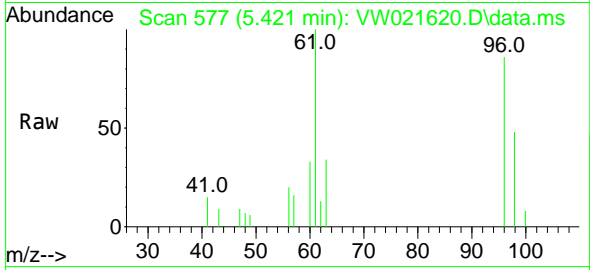
Quant Time: Dec 24 01:46:02 2021
 Quant Method : Z:\voasrv\HPCHEM1\MSVOA_W\Method\SFAMWLM120921SMA.M
 Quant Title : SFAM01.0
 QLast Update : Fri Dec 24 01:43:02 2021
 Response via : Initial Calibration





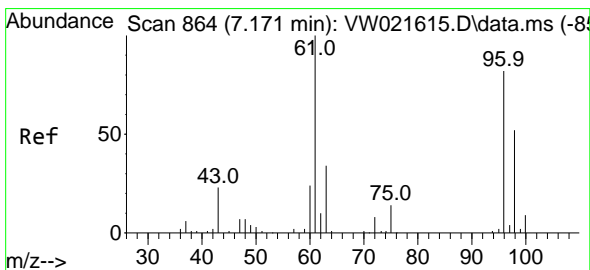
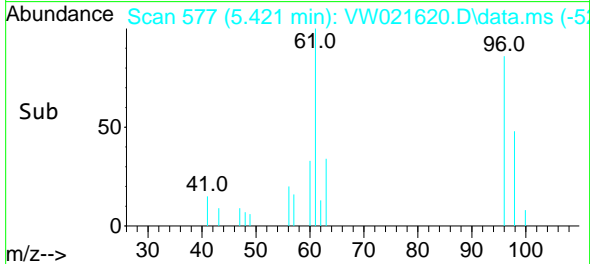
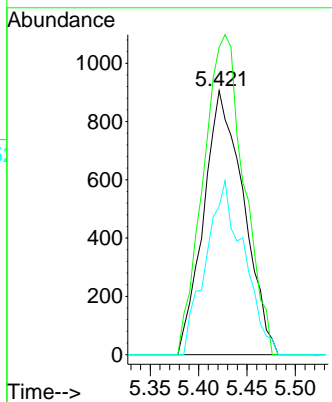
#17
 trans-1,2-Dichloroethene
 Concen: 1.919 ug/L
 RT: 5.421 min Scan# 51
 Delta R.T. -0.006 min
 Lab File: VW021620.D
 Acq: 23 Dec 2021 18:41

Instrument : MSVOA_W
 ClientSampleId : GBC23



Tgt Ion: 96 Resp: 2602

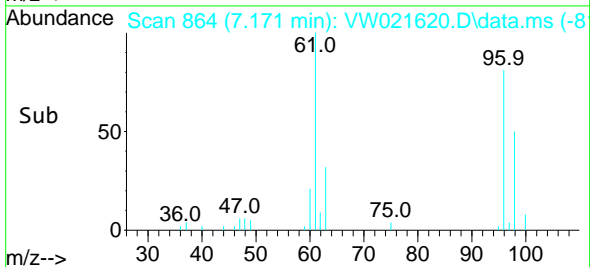
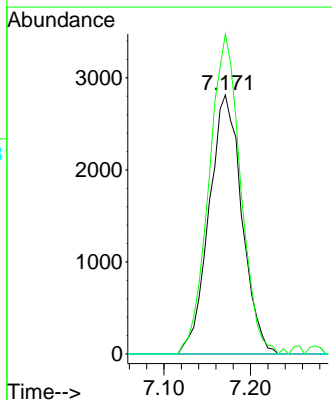
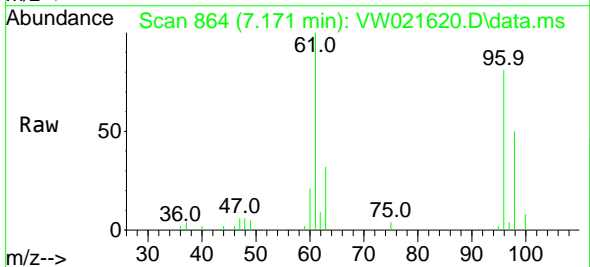
Ion	Ratio	Lower	Upper
96	100		
61	116.4	107.4	199.4
98	56.1	41.2	76.6

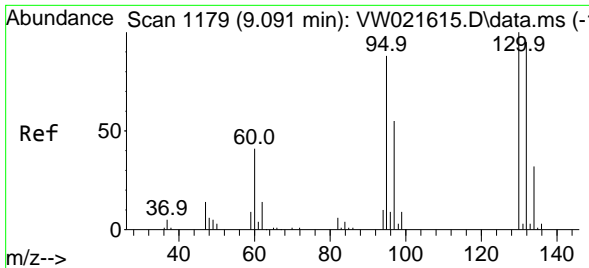


#20
 cis-1,2-Dichloroethene
 Concen: 5.183 ug/L
 RT: 7.171 min Scan# 864
 Delta R.T. -0.000 min
 Lab File: VW021620.D
 Acq: 23 Dec 2021 18:41

Tgt Ion: 96 Resp: 7411

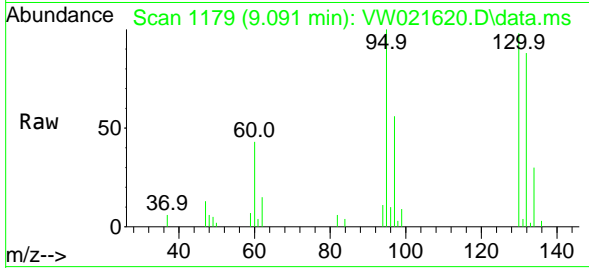
Ion	Ratio	Lower	Upper
96	100		
61	123.6	103.7	192.7
68	0.0	0.0	0.0





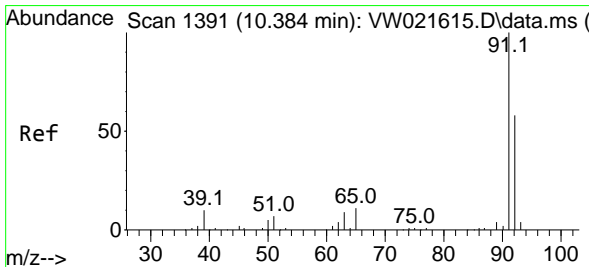
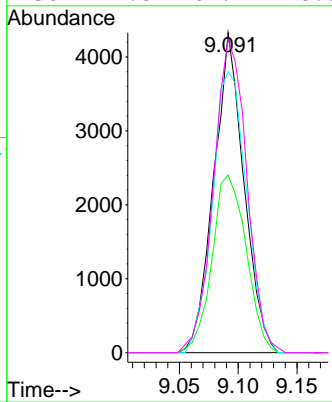
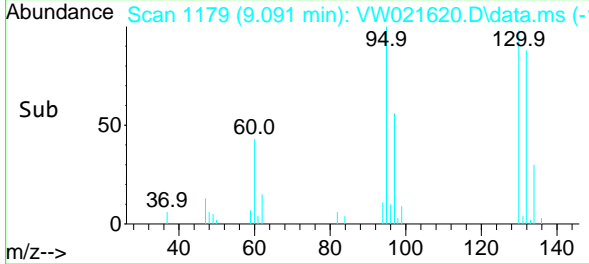
#34
 Trichloroethene
 Concen: 5.193 ug/L
 RT: 9.091 min Scan# 1179
 Delta R.T. -0.000 min
 Lab File: VW021620.D
 Acq: 23 Dec 2021 18:41

Instrument : MSVOA_W
 ClientSampleId : GBC23

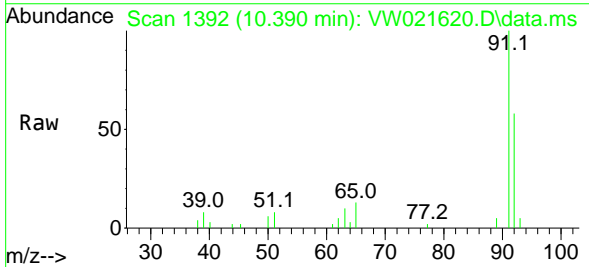


Tgt Ion: 95 Resp: 7748

Ion	Ratio	Lower	Upper
95	100		
97	55.5	47.0	87.2
132	87.8	65.5	121.6
130	97.8	69.4	128.8

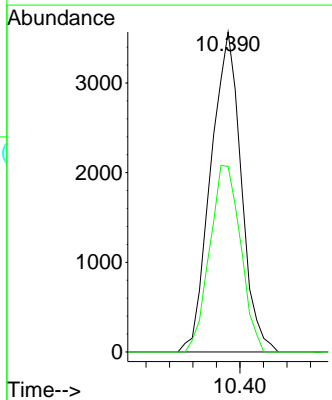
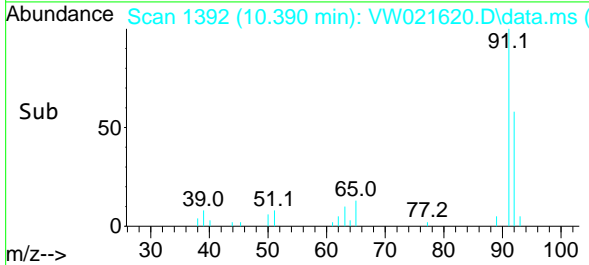


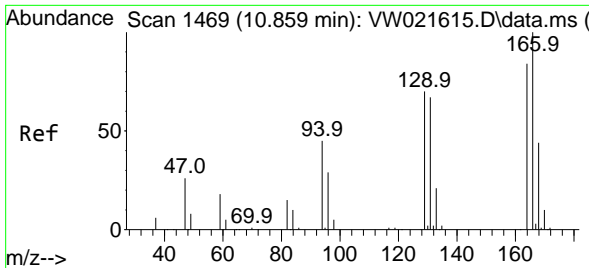
#42
 Toluene
 Concen: 1.032 ug/L
 RT: 10.390 min Scan# 1392
 Delta R.T. 0.006 min
 Lab File: VW021620.D
 Acq: 23 Dec 2021 18:41



Tgt Ion: 91 Resp: 6413

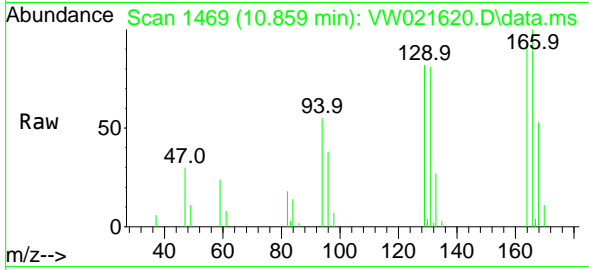
Ion	Ratio	Lower	Upper
91	100		
92	58.0	41.7	77.5



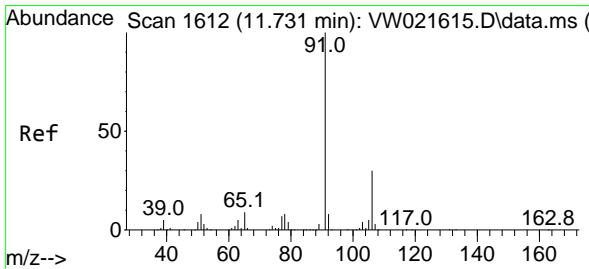
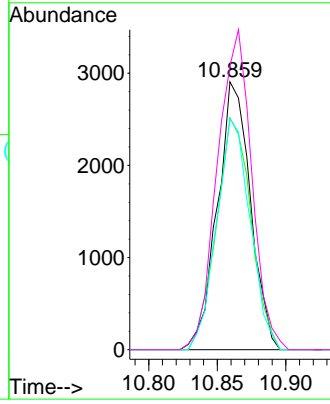
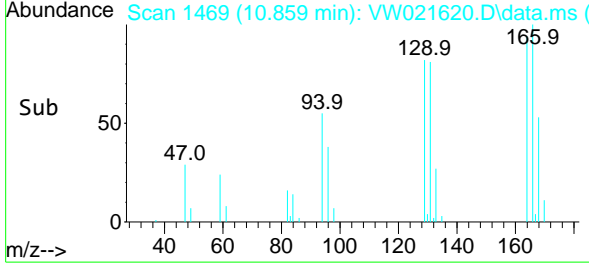


#46
 Tetrachloroethene
 Concen: 3.442 ug/L
 RT: 10.859 min Scan# 1469
 Delta R.T. -0.000 min
 Lab File: VW021620.D
 Acq: 23 Dec 2021 18:41

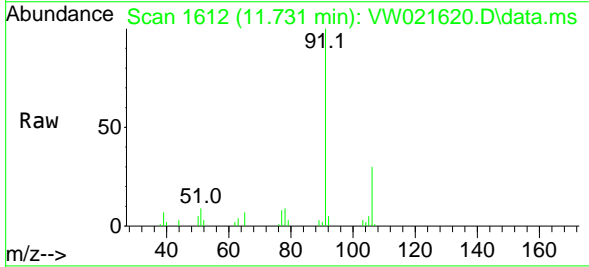
Instrument :
 MSVOA_W
 ClientSampleId :
 GBC23



Tgt Ion:164 Resp: 4879
 Ion Ratio Lower Upper
 164 100
 129 86.5 65.5 121.7
 131 86.2 59.7 110.9
 166 105.9 88.7 164.7



#52
 Ethylbenzene
 Concen: 0.823 ug/L
 RT: 11.731 min Scan# 1612
 Delta R.T. -0.000 min
 Lab File: VW021620.D
 Acq: 23 Dec 2021 18:41



Tgt Ion: 91 Resp: 5844
 Ion Ratio Lower Upper
 91 100
 106 30.4 21.5 39.9

