

Data Path : Z:\voasrv\HPCHEM1\MSVOA_W\Data\VW122624\
 Data File : VW031536.D
 Acq On : 26 Dec 2024 18:11
 Operator : SY/MD
 Sample : P5378-03
 Misc : 6.22g/10mL/MSVOA_W/SOIL/A
 ALS Vial : 20 Sample Multiplier: 1

Instrument :
 MSVOA_W
 ClientSampleId :
 YE634

Quant Time: Dec 27 00:27:57 2024
 Quant Method : Z:\voasrv\HPCHEM1\MSVOA_W\Method\SFAMWLM121324SMA.M
 Quant Title : SFAM01.0
 QLast Update : Fri Dec 27 00:21:46 2024
 Response via : Initial Calibration

Compound	R.T.	QIon	Response	Conc	Units	Dev(Min)

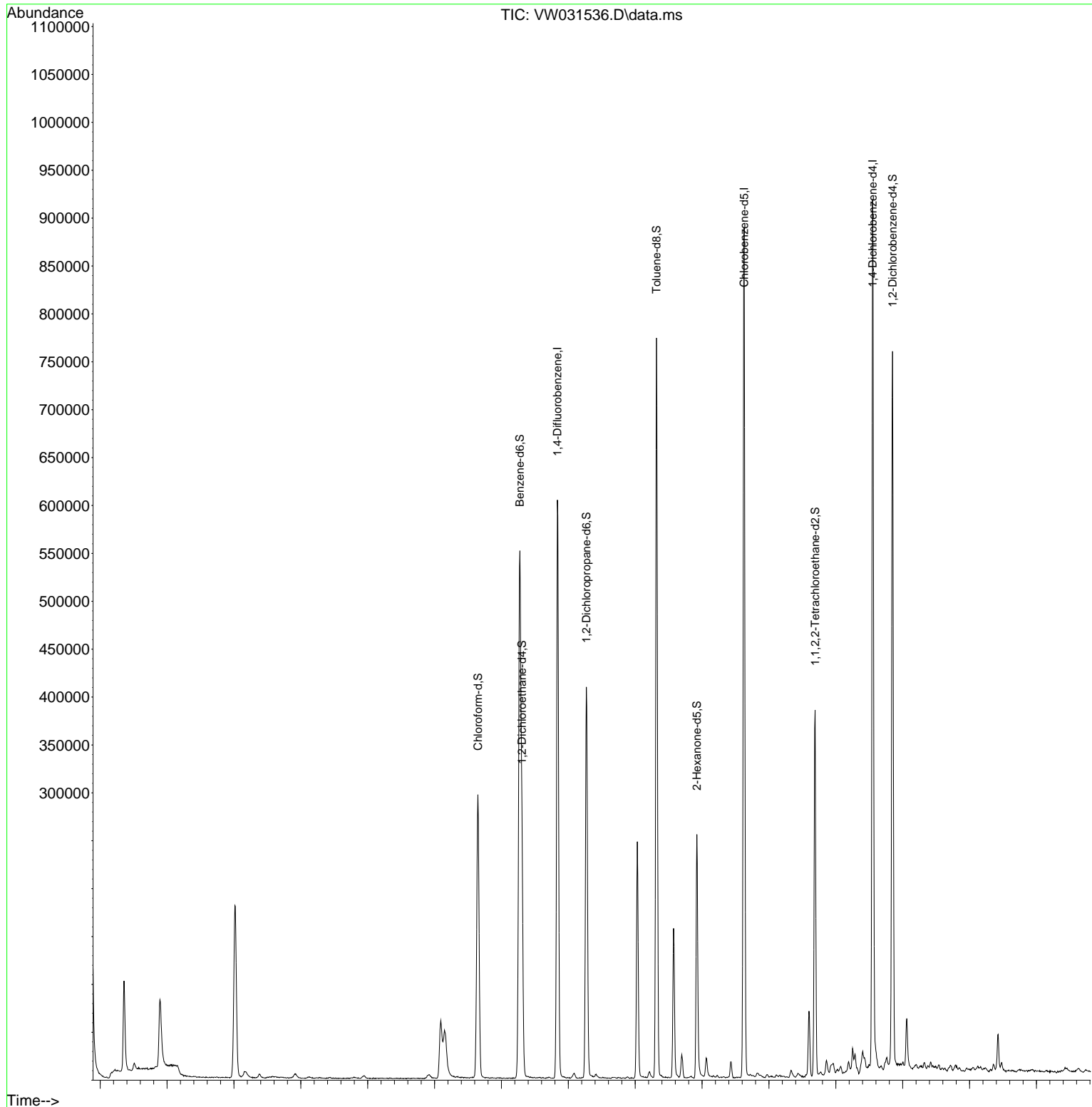
Internal Standards						
1) 1,4-Difluorobenzene	8.837	114	516466	25.000	ug/L	0.00
28) Chlorobenzene-d5	11.629	117	488809	25.000	ug/L	0.00
58) 1,4-Dichlorobenzene-d4	13.550	152	236065	25.000	ug/L	0.00
System Monitoring Compounds						
4) Vinyl Chloride-d3	2.357	65	112311	14.453	ug/L	0.00
Spiked Amount	25.000	Range 30 - 150	Recovery =	57.800%		
7) Chloroethane-d5	2.893	69	106753	18.571	ug/L	0.00
Spiked Amount	25.000	Range 30 - 150	Recovery =	74.280%		
11) 1,1-Dichloroethene-d2	4.015	65	56142	15.231	ug/L	0.00
Spiked Amount	25.000	Range 45 - 110	Recovery =	60.920%		
21) 2-Butanone-d5	7.093	46	113071	77.264	ug/L	-0.01
Spiked Amount	50.000	Range 20 - 135	Recovery =	154.520%#		
24) Chloroform-d	7.648	84	297990	21.058	ug/L	0.00
Spiked Amount	25.000	Range 40 - 150	Recovery =	84.240%		
26) 1,2-Dichloroethane-d4	8.307	65	202072	28.434	ug/L	0.00
Spiked Amount	25.000	Range 70 - 130	Recovery =	113.720%		
32) Benzene-d6	8.276	84	566197	18.072	ug/L	0.00
Spiked Amount	25.000	Range 20 - 135	Recovery =	72.280%		
36) 1,2-Dichloropropane-d6	9.270	67	189933	20.801	ug/L	0.00
Spiked Amount	25.000	Range 70 - 120	Recovery =	83.200%		
41) Toluene-d8	10.319	98	512300	17.577	ug/L	0.00
Spiked Amount	25.000	Range 30 - 130	Recovery =	70.320%		
43) trans-1,3-Dichloroprop...	10.575	79	84922	20.170	ug/L	0.00
Spiked Amount	25.000	Range 30 - 135	Recovery =	80.680%		
47) 2-Hexanone-d5	10.922	63	87219	71.028	ug/L	0.00
Spiked Amount	50.000	Range 20 - 135	Recovery =	142.060%#		
56) 1,1,2,2-Tetrachloroeth...	12.690	84	186628	32.553	ug/L	0.00
Spiked Amount	25.000	Range 45 - 120	Recovery =	130.200%#		
66) 1,2-Dichlorobenzene-d4	13.848	152	190103	21.692	ug/L	0.00
Spiked Amount	25.000	Range 75 - 120	Recovery =	86.760%		
Target Compounds						
40) 4-Methyl-2-pentanone	10.215	43	4609	1.153	ug/L	Qvalue 91

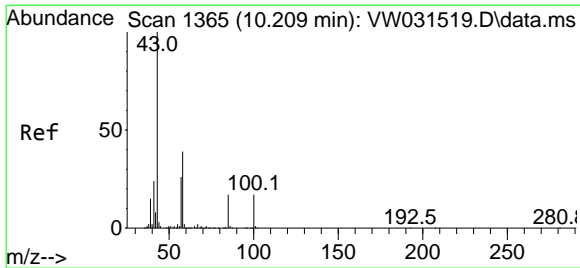
(#) = qualifier out of range (m) = manual integration (+) = signals summed

Data Path : Z:\voasrv\HPCHEM1\MSVOA_W\Data\VW122624\
 Data File : VW031536.D
 Acq On : 26 Dec 2024 18:11
 Operator : SY/MD
 Sample : P5378-03
 Misc : 6.22g/10mL/MSVOA_W/SOIL/A
 ALS Vial : 20 Sample Multiplier: 1

Instrument :
 MSVOA_W
 ClientSampleId :
 YE634

Quant Time: Dec 27 00:27:57 2024
 Quant Method : Z:\voasrv\HPCHEM1\MSVOA_W\Method\SFAMWLM121324SMA.M
 Quant Title : SFAM01.0
 QLast Update : Fri Dec 27 00:21:46 2024
 Response via : Initial Calibration





#40
 4-Methyl-2-pentanone
 Concen: 1.153 ug/L
 RT: 10.215 min Scan# 13
 Delta R.T. 0.006 min
 Lab File: VW031536.D
 Acq: 26 Dec 2024 18:11

Instrument : MSVOA_W
 ClientSampleId : YE634

Tgt Ion: 43 Resp: 4609

Ion	Ratio	Lower	Upper
43	100		
58	45.6	31.1	46.7
100	17.4	13.0	19.6

