

Data Path : Z:\voasrv\HPCHEM1\MSVOA_F\Data\VF010219\
 Data File : VF061247.D
 Acq On : 2 Jan 2019 11:42
 Operator : VA/AP
 Sample : VF0102SBL01
 Misc : 5.00g/5mL/MSVOA-F/SOIL
 ALS Vial : 3 Sample Multiplier: 1

Instrument :
 MSVOA_F
 ClientSampleId :
 VF0102SBL01

Integration Parameters: RTEINT.P

Integrator: RTE
 Smoothing : ON Filtering: 5
 Sampling : 1 Min Area: 3 % of largest Peak
 Start Thrs: 0.2 Max Peaks: 100
 Stop Thrs : 0 Peak Location: TOP

If leading or trailing edge < 100 prefer < Baseline drop else tangent >
 Peak separation: 5

Method : Z:\VOASRV\HPCHEM1\MSVOA_F\METHODS\82F121918S.M
 Title : SW846 8260

Signal : TIC

peak #	R.T. min	first scan	max scan	last scan	PK TY	peak height	corr. area	corr. % max.	% of total
1	1.077	42	45	53	rBV4	15945	78150	6.50%	0.985%
2	2.172	152	156	158	rBV	21179	39528	3.29%	0.498%
3	2.241	158	163	172	rVV2	22035	86902	7.23%	1.096%
4	2.369	172	176	182	rVB5	9676	23910	1.99%	0.301%
5	3.997	336	341	344	rBV3	8818	27144	2.26%	0.342%
6	4.095	344	351	368	rVB	169620	527484	43.88%	6.650%
7	4.401	373	382	393	rBV	58285	261633	21.77%	3.298%
8	4.845	419	427	443	rBV3	302459	1077912	89.68%	13.589%
9	5.585	495	502	513	rBV	299974	846318	70.41%	10.670%
10	6.255	564	570	576	rBV4	5640	21091	1.75%	0.266%
11	6.423	580	587	593	rBV4	10007	36142	3.01%	0.456%
12	7.133	651	659	664	rBV5	6922	22442	1.87%	0.283%
13	7.538	694	700	714	rBV	486953	1202016	100.00%	15.154%
14	8.199	762	767	776	rBV3	12740	50044	4.16%	0.631%
15	9.491	893	898	902	rVB4	5539	15956	1.33%	0.201%
16	9.619	907	911	920	rVB	14519	37152	3.09%	0.468%
17	9.757	920	925	935	rBV	442543	972345	80.89%	12.258%
18	10.122	957	962	966	rBV3	5337	13592	1.13%	0.171%
19	11.395	1085	1091	1103	rBV	497314	939985	78.20%	11.850%
20	11.553	1103	1107	1114	rVB3	24798	57680	4.80%	0.727%
21	12.095	1160	1162	1168	rBV	16781	19913	1.66%	0.251%
22	12.164	1168	1169	1170	rVV	48355	31070	2.58%	0.392%
23	12.450	1192	1198	1203	rBV3	10597	24131	2.01%	0.304%
24	12.539	1203	1207	1220	rVB	745993	1131591	94.14%	14.266%
25	13.279	1278	1282	1286	rVB2	15798	27437	2.28%	0.346%
26	14.443	1398	1400	1407	rBV2	14265	24965	2.08%	0.315%
27	14.591	1412	1415	1420	rVB4	6652	13017	1.08%	0.164%
28	14.877	1433	1444	1455	rBV3	51152	322479	26.83%	4.066%

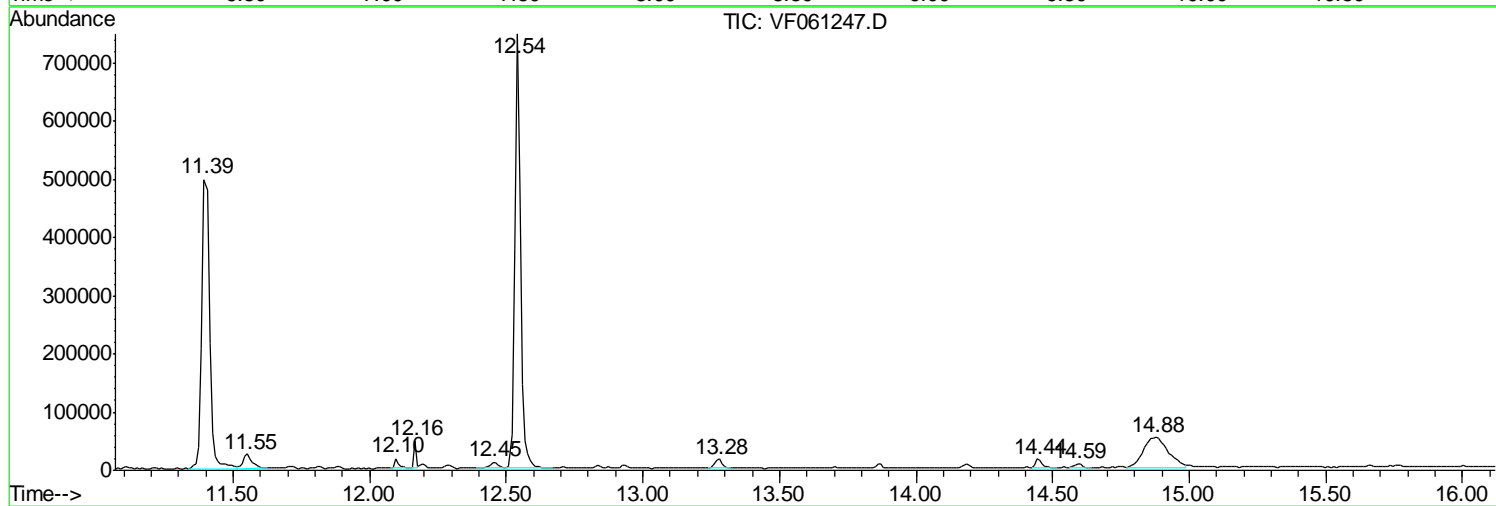
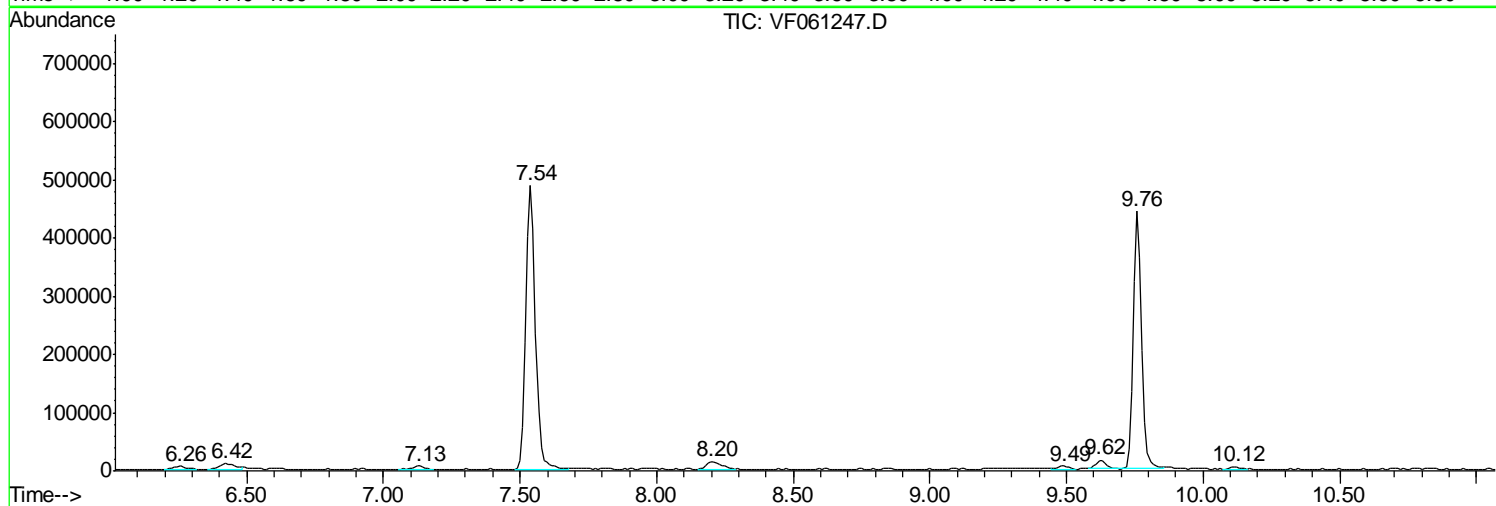
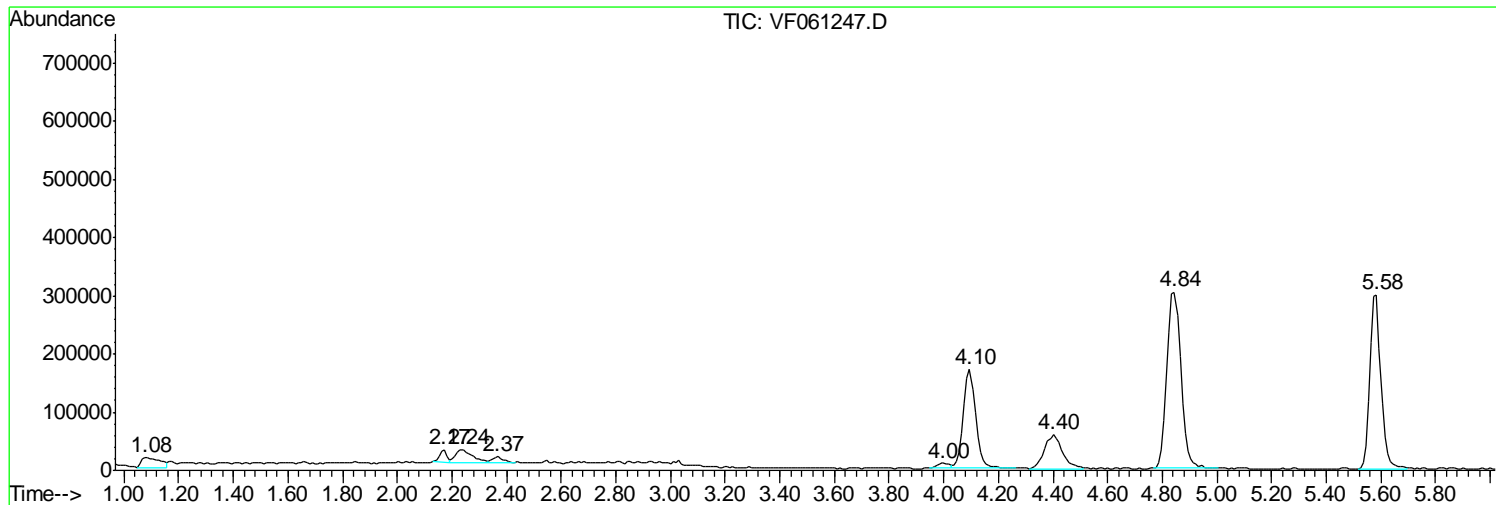
Sum of corrected areas: 7932029

Data Path : Z:\voasrv\HPCHEM1\MSVOA_F\Data\VF010219\
Data File : VF061247.D
Acq On : 2 Jan 2019 11:42
Operator : VA/AP
Sample : VF0102SBL01
Misc : 5.00g/5mL/MSVOA-F/SOIL
ALS Vial : 3 Sample Multiplier: 1

Instrument :
MSVOA_F
ClientSampleId :
VF0102SBL01

Quant Method : Z:\VOASRV\HPCHEM1\MSVOA_F\METHODS\82F121918S.M
Quant Title : SW846 8260

TIC Library : C:\DATABASE\NIST11.L
TIC Integration Parameters: LSCINT.P



Data Path : Z:\voasrv\HPCHEM1\MSVOA_F\Data\VF010219\
Data File : VF061247.D
Acq On : 2 Jan 2019 11:42
Operator : VA/AP
Sample : VF0102SBL01
Misc : 5.00g/5mL/MSVOA-F/SOIL
ALS Vial : 3 Sample Multiplier: 1

Instrument :
MSVOA_F
ClientSampleId :
VF0102SBL01

Quant Method : Z:\VOASRV\HPCHEM1\MSVOA_F\METHODS\82F121918S.M
Quant Title : SW846 8260

TIC Library : C:\DATABASE\NIST11.L
TIC Integration Parameters: LSCINT.P

No Library Search Compounds Detected

Data Path : Z:\voasrv\HPCHEM1\MSVOA_F\Data\VF010219\
Data File : VF061247.D
Acq On : 2 Jan 2019 11:42
Operator : VA/AP
Sample : VF0102SBL01
Misc : 5.00g/5mL/MSVOA-F/SOIL
ALS Vial : 3 Sample Multiplier: 1

Instrument :
MSVOA_F
ClientSampleId :
VF0102SBL01

Quant Method : Z:\VOASRV\HPCHEM1\MSVOA_F\METHODS\82F121918S.M
Quant Title : SW846 8260

TIC Library : C:\DATABASE\NIST11.L
TIC Integration Parameters: LSCINT.P

TIC Top Hit name	RT	EstConc	Units	Response	--Internal Standard--			
					#	RT	Resp	Conc
