

Data Path : Z:\HPCHEM1\MSVOA_F\DATA\VF011019\
 Data File : VF061355.D
 Acq On : 10 Jan 2019 20:35
 Operator : VA/AP
 Sample : K1015-03
 Misc : 6.70g/5mL/MSVOA-F/SOIL
 ALS Vial : 19 Sample Multiplier: 1

Quant Time: Jan 11 00:33:14 2019
 Quant Method : Z:\HPCHEM1\MSVOA_F\METHODS\82F010819S.M
 Quant Title : SW846 8260
 QLast Update : Wed Jan 09 07:13:51 2019
 Response via : Initial Calibration

Internal Standards	R.T.	QIon	Response	Conc	Units	Dev(Min)
1) Pentafluorobenzene	0.00	168	0	0.00	ug/l	-4.87
34) 1,4-Difluorobenzene	5.27	114	67	50.00	ug/l	-0.33
63) Chlorobenzene-d5	0.00	117	0	0.00	ug/l	-9.79
72) 1,4-Dichlorobenzene-d4	0.00	152	0	0.00	ug/l	-12.56

System Monitoring Compounds

33) 1,2-Dichloroethane-d4	0.00	65	0	0.00	ug/l	
Spiked Amount				50.000		
			Recovery	=		0.00%
35) Dibromofluoromethane	0.00	113	0	0.00	ug/l	
Spiked Amount				50.000		
			Recovery	=		0.00%
50) Toluene-d8	0.00	98	0	0.00	ug/l	
Spiked Amount				50.000		
			Recovery	=		0.00%
62) 4-Bromofluorobenzene	10.70	95	93	140.39	ug/l	-0.72
Spiked Amount				50.000		
			Recovery	=		280.78%

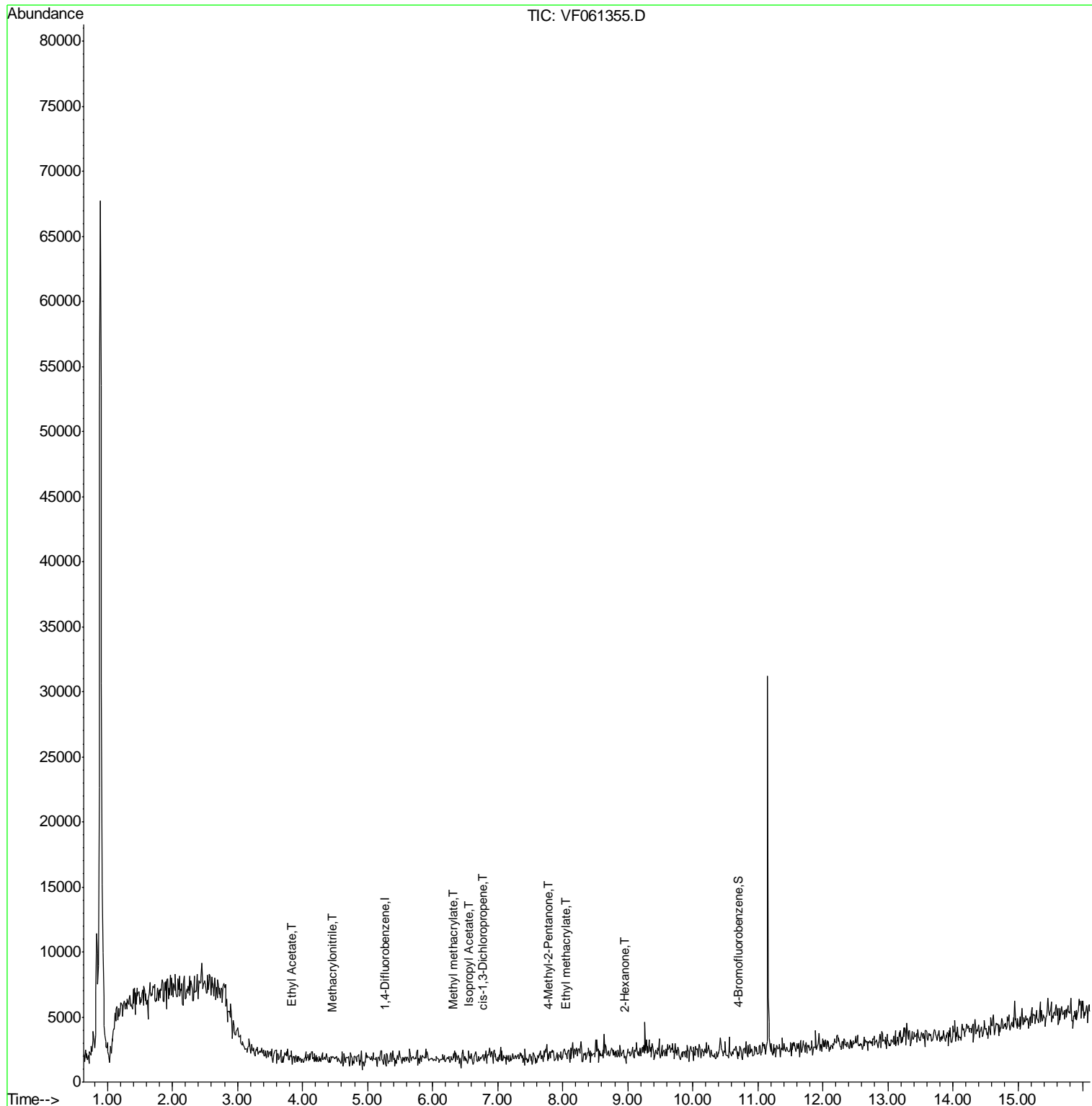
Target Compounds

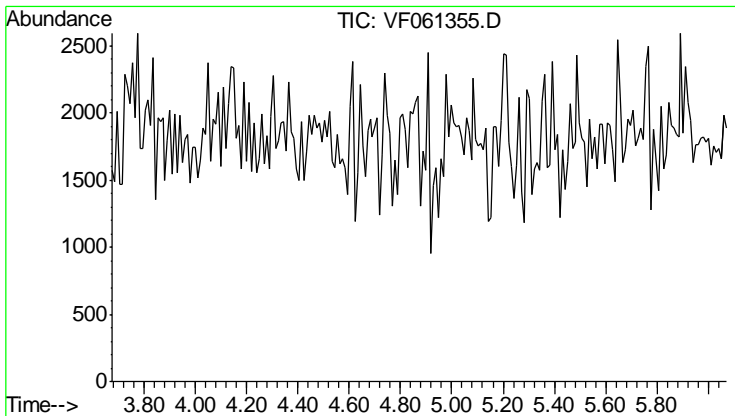
						Qvalue
37) Ethyl Acetate	3.84	43	164	575.601	ug/l #	1
41) Methacrylonitrile	4.46	41	303	1904.350	ug/l #	24
43) Isopropyl Acetate	6.55	43	88	233.942	ug/l #	45
48) Methyl methacrylate	6.32	41	88	360.414	ug/l #	48
51) 4-Methyl-2-Pentanone	7.78	43	70	246.543	ug/l #	38
54) cis-1,3-Dichloropropene	6.76	75	95	128.626	ug/l #	29
56) Ethyl methacrylate	8.05	69	69	187.914	ug/l #	20
59) 2-Hexanone	8.97	43	134	666.178	ug/l #	27

(#) = qualifier out of range (m) = manual integration (+) = signals summed

Data Path : Z:\HPCHEM1\MSVOA_F\DATA\VF011019\
 Data File : VF061355.D
 Acq On : 10 Jan 2019 20:35
 Operator : VA/AP
 Sample : K1015-03
 Misc : 6.70g/5mL/MSVOA-F/SOIL
 ALS Vial : 19 Sample Multiplier: 1

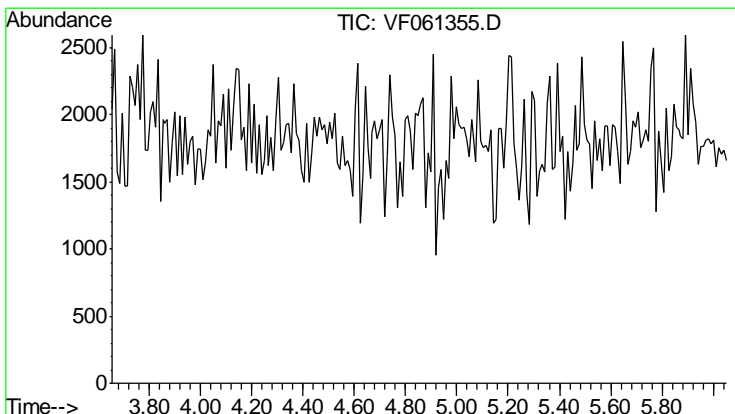
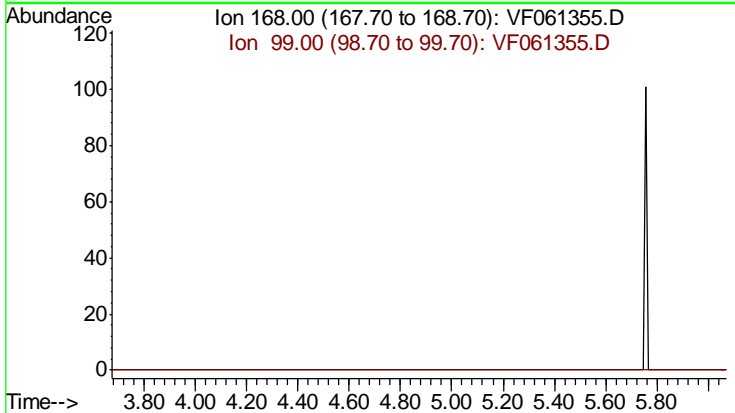
Quant Time: Jan 11 00:33:14 2019
 Quant Method : Z:\HPCHEM1\MSVOA_F\METHODS\82F010819S.M
 Quant Title : SW846 8260
 QLast Update : Wed Jan 09 07:13:51 2019
 Response via : Initial Calibration





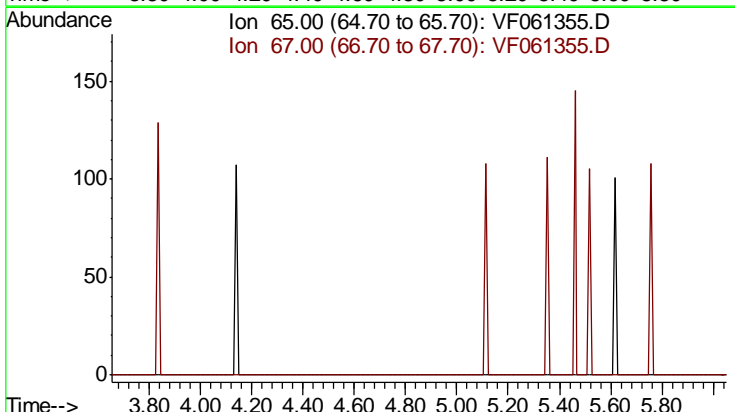
#1
 Pentafluorobenzene
 Concen: 0.000 ug/l
 Expected RT: 4.87 min
 Lab File: VF061355.D
 Acq: 10 Jan 2019 20:35

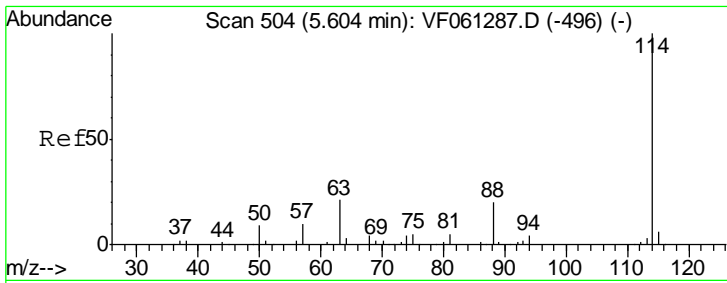
Tgt Ion	Exp Ratio
168	100
99	65.9



#33
 1,2-Dichloroethane-d4
 Concen: 0.000 ug/l
 Expected RT: 4.85 min
 Lab File: VF061355.D
 Acq: 10 Jan 2019 20:35

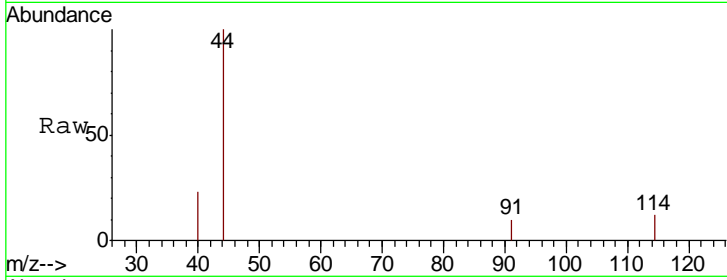
Tgt Ion	Exp Ratio
65	100
67	49.1



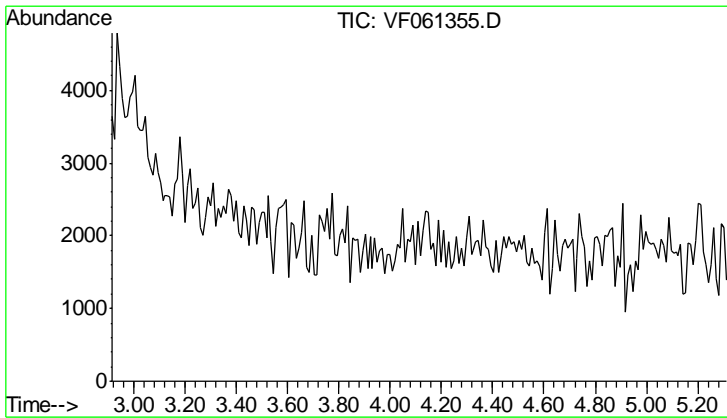
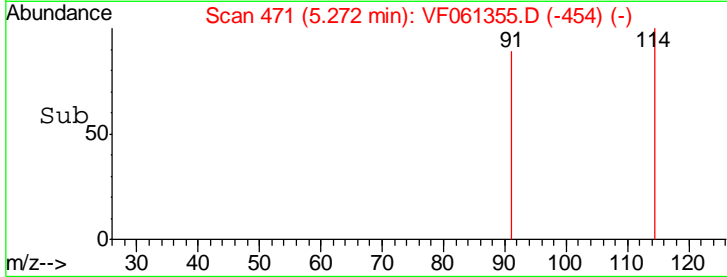
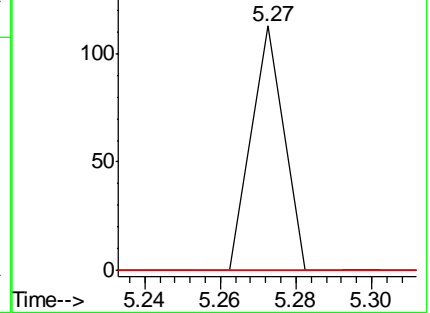


#34
 1,4-Difluorobenzene
 Concen: 50.000 ug/l
 RT: 5.27 min Scan# 471
 Delta R.T. -0.33 min
 Lab File: VF061355.D
 Acq: 10 Jan 2019 20:35

Tgt Ion	Resp	Lower	Upper
114	100		
63	0.0	0.0	42.8
88	0.0	0.0	40.0

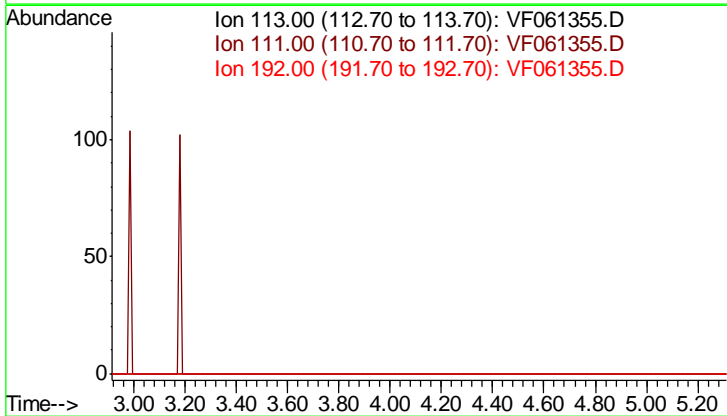


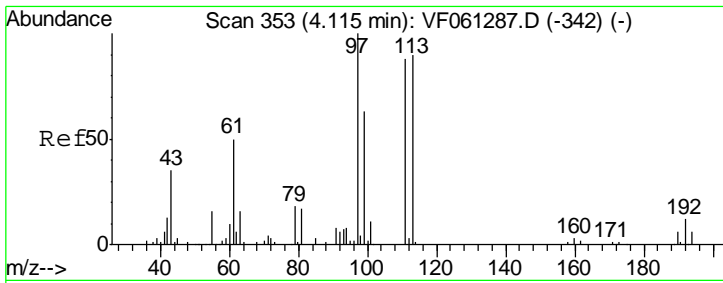
Abundance Ion 114.00 (113.70 to 114.70): V
 Ion 63.00 (62.70 to 63.70): VF0
 Ion 88.00 (87.70 to 88.70): VF0



#35
 Dibromofluoromethane
 Concen: 0.000 ug/l
 Expected RT: 4.11 min
 Lab File: VF061355.D
 Acq: 10 Jan 2019 20:35

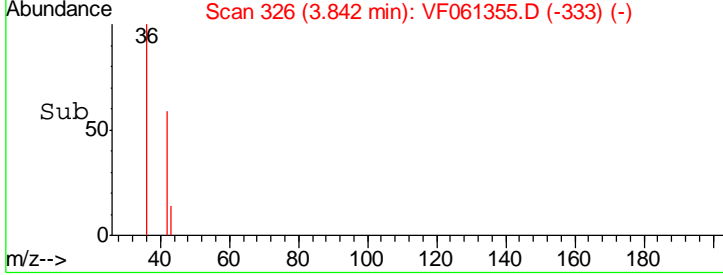
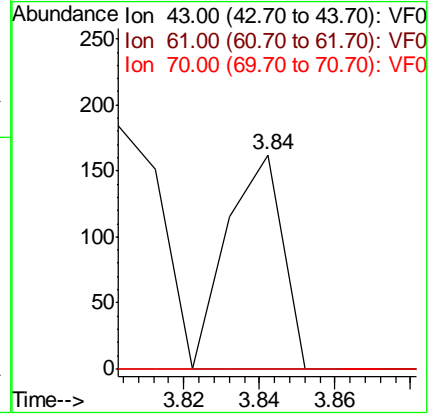
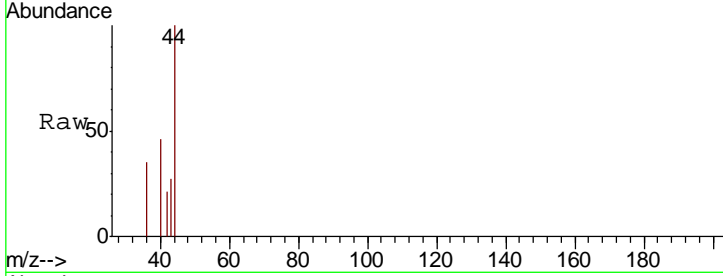
Tgt Ion	Exp Ratio
113	100
111	97.5
192	13.3





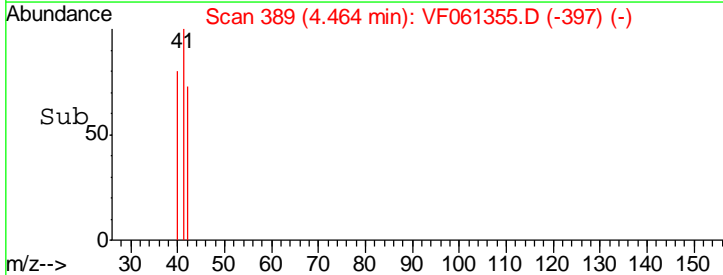
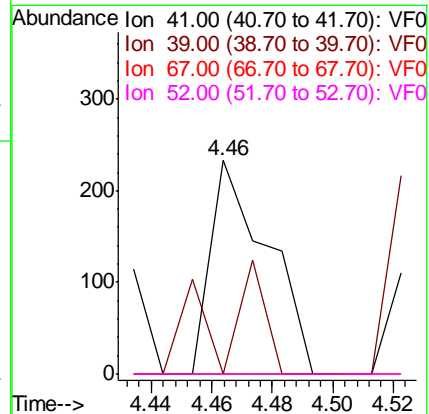
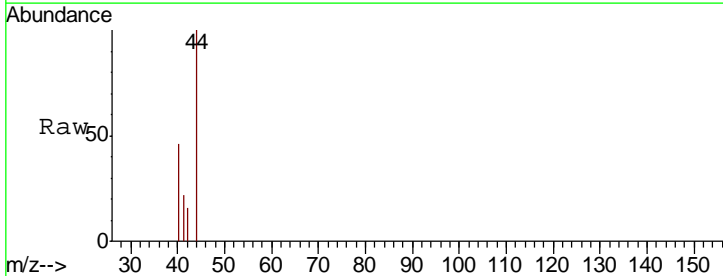
#37
 Ethyl Acetate
 Concen: 575.601 ug/l
 RT: 3.84 min Scan# 326
 Delta R.T. -0.27 min
 Lab File: VF061355.D
 Acq: 10 Jan 2019 20:35

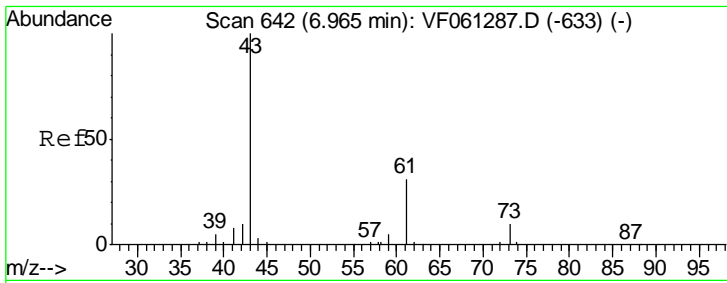
Tgt Ion	Resp	Lower	Upper
43	100		
61	0.0	113.3	169.9#
70	0.0	9.4	14.0#



#41
 Methacrylonitrile
 Concen: 1904.350 ug/l
 RT: 4.46 min Scan# 389
 Delta R.T. -0.28 min
 Lab File: VF061355.D
 Acq: 10 Jan 2019 20:35

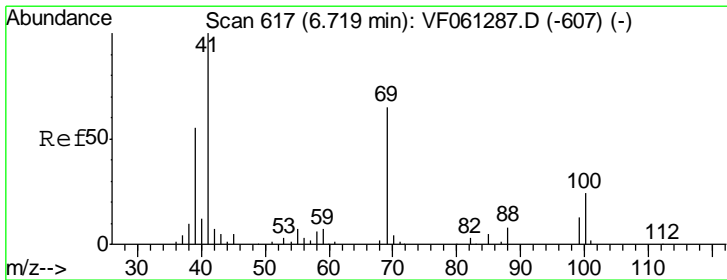
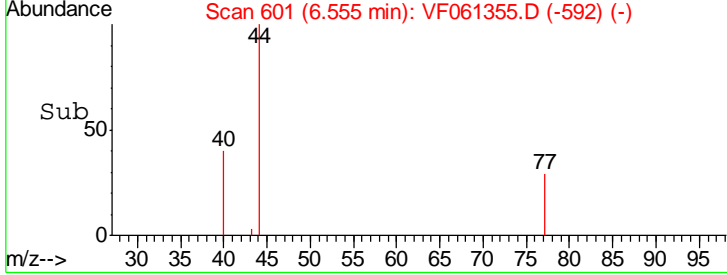
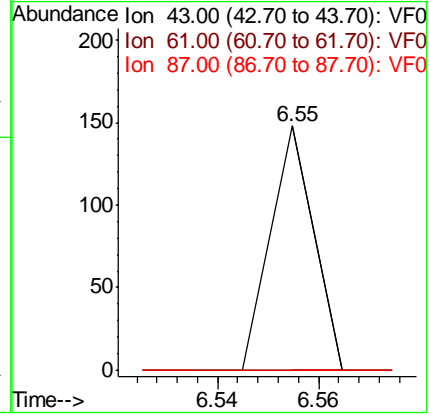
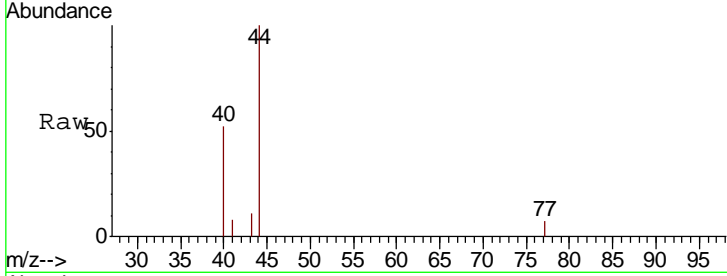
Tgt Ion	Resp	Lower	Upper
41	100		
39	0.0	52.7	79.1#
67	0.0	41.4	62.2#
52	0.0	33.0	49.4#





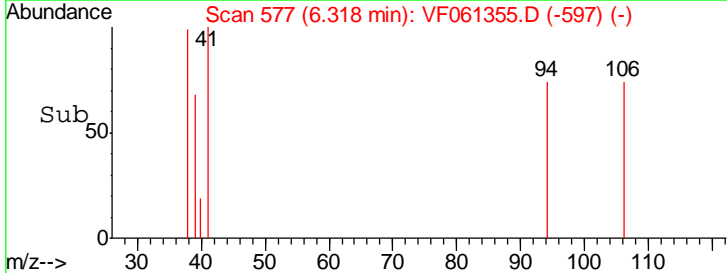
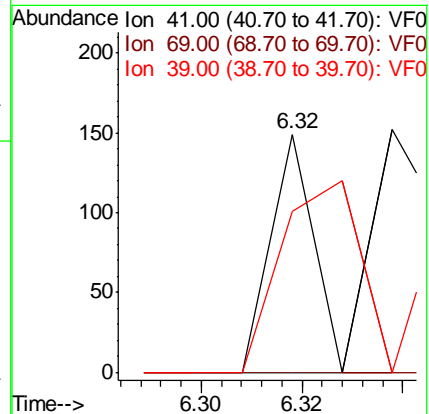
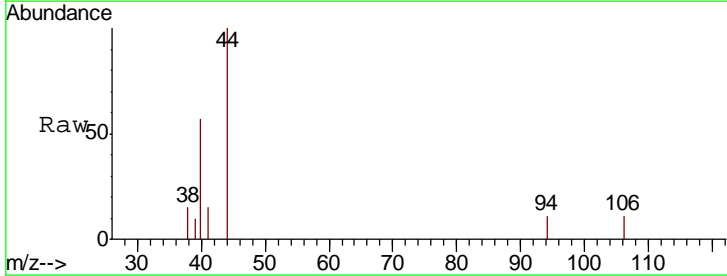
#43
 Isopropyl Acetate
 Concen: 233.942 ug/l
 RT: 6.55 min Scan# 601
 Delta R.T. -0.41 min
 Lab File: VF061355.D
 Acq: 10 Jan 2019 20:35

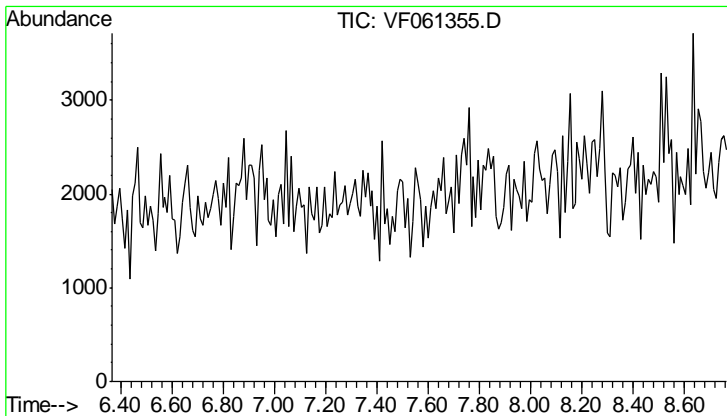
Tgt Ion	Resp	Lower	Upper
43	100		
61	0.0	24.3	36.5#
87	0.0	0.2	0.4#



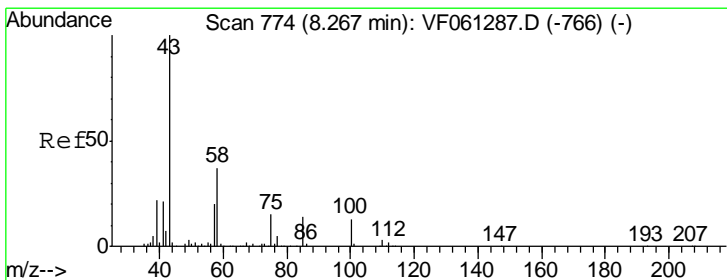
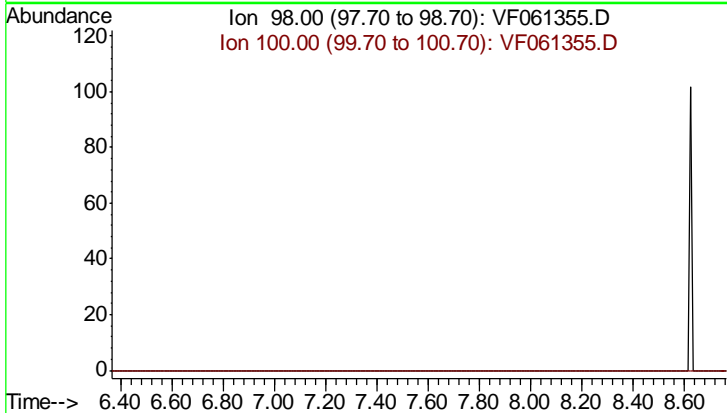
#48
 Methyl methacrylate
 Concen: 360.414 ug/l
 RT: 6.32 min Scan# 577
 Delta R.T. -0.40 min
 Lab File: VF061355.D
 Acq: 10 Jan 2019 20:35

Tgt Ion	Resp	Lower	Upper
41	100		
69	0.0	51.5	77.3#
39	67.8	44.1	66.1#

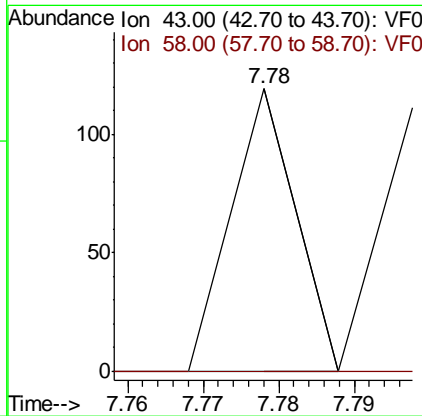
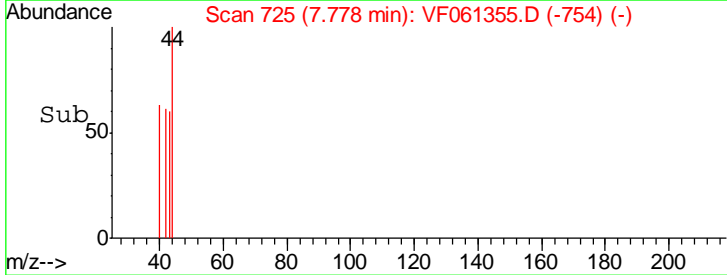
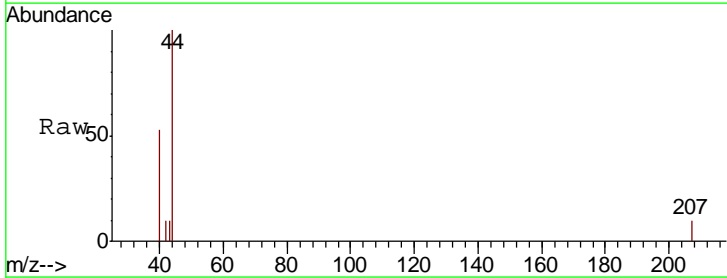


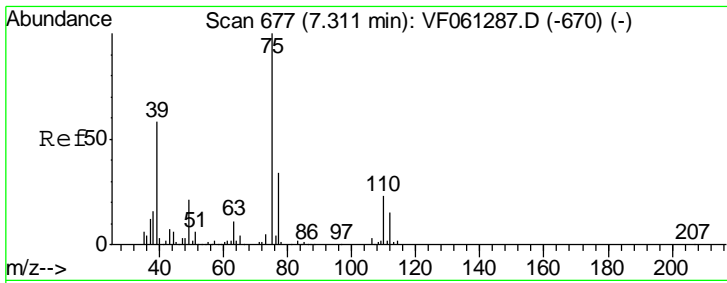


#50
 Toluene-d8
 Concen: 0.000 ug/l
 Expected RT: 7.57 min
 Lab File: VF061355.D
 Acq: 10 Jan 2019 20:35
 Tgt Ion: 98
 Sig Exp Ratio
 98 100
 100 69.5



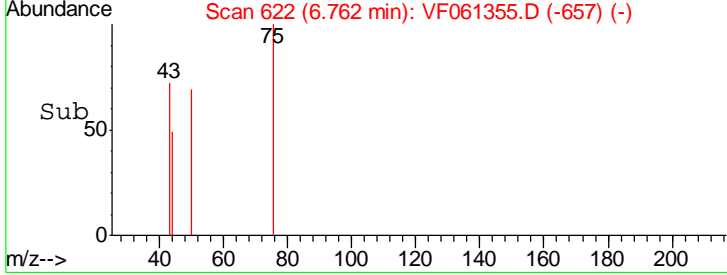
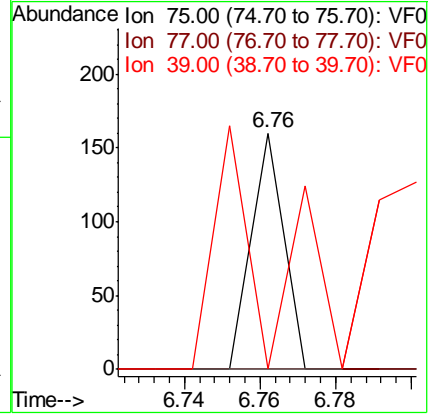
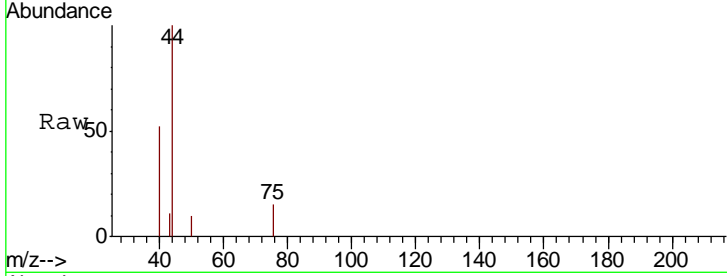
#51
 4-Methyl-2-Pentanone
 Concen: 246.543 ug/l
 RT: 7.78 min Scan# 725
 Delta R.T. -0.49 min
 Lab File: VF061355.D
 Acq: 10 Jan 2019 20:35
 Tgt Ion: 43 Resp: 70
 Ion Ratio Lower Upper
 43 100
 58 0.0 29.6 44.4#





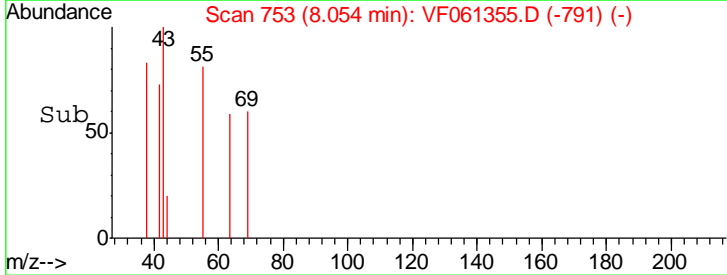
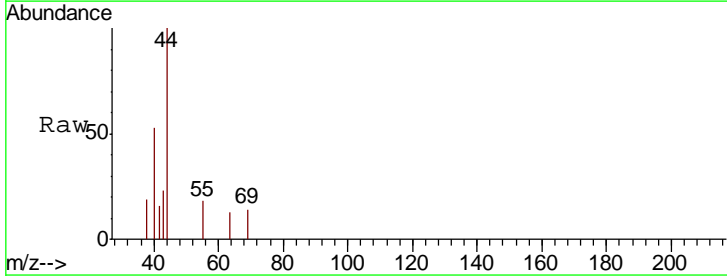
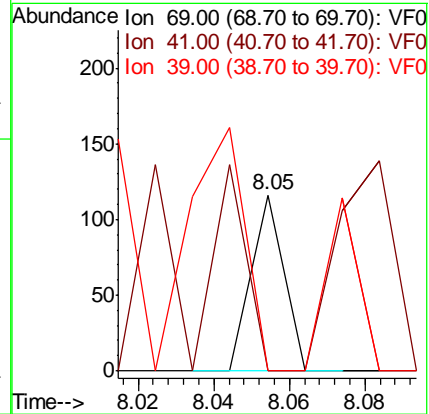
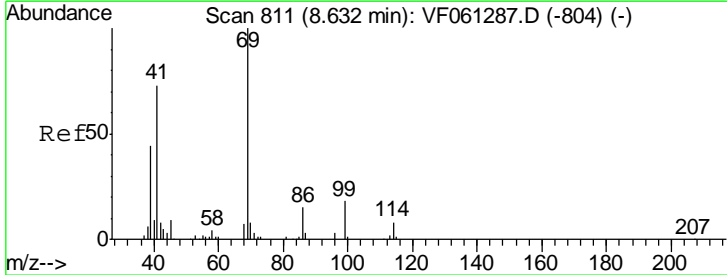
#54
 cis-1,3-Dichloropropene
 Concen: 128.626 ug/l
 RT: 6.76 min Scan# 622
 Delta R.T. -0.55 min
 Lab File: VF061355.D
 Acq: 10 Jan 2019 20:35

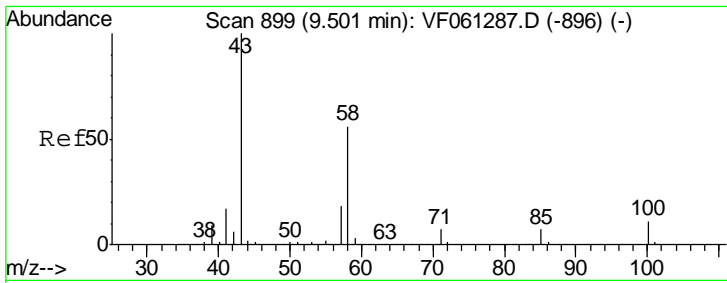
Tgt Ion	Resp	Lower	Upper
75	100		
77	0.0	27.3	40.9#
39	0.0	46.3	69.5#



#56
 Ethyl methacrylate
 Concen: 187.914 ug/l
 RT: 8.05 min Scan# 753
 Delta R.T. -0.58 min
 Lab File: VF061355.D
 Acq: 10 Jan 2019 20:35

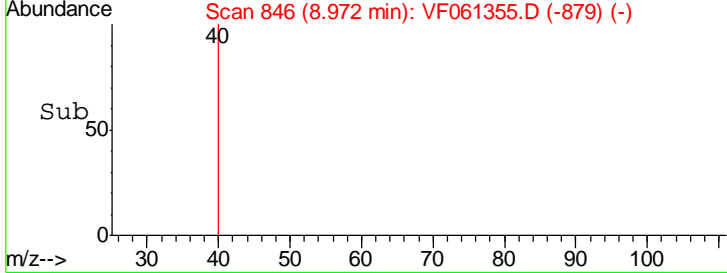
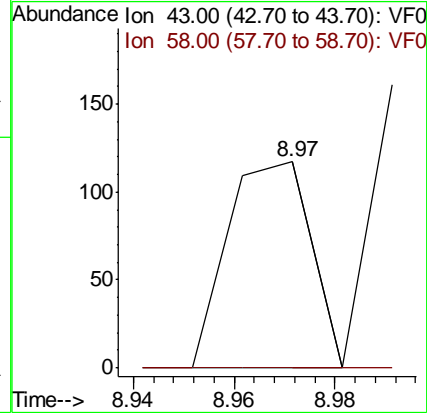
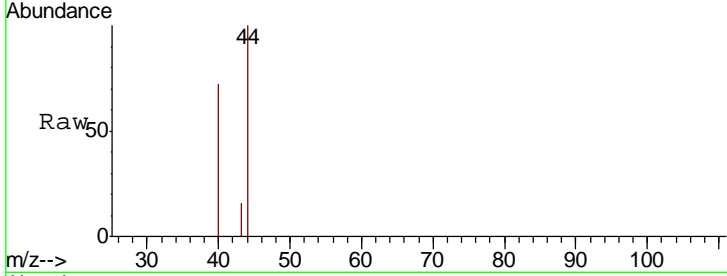
Tgt Ion	Resp	Lower	Upper
69	100		
41	0.0	59.0	88.4#
39	0.0	35.3	52.9#





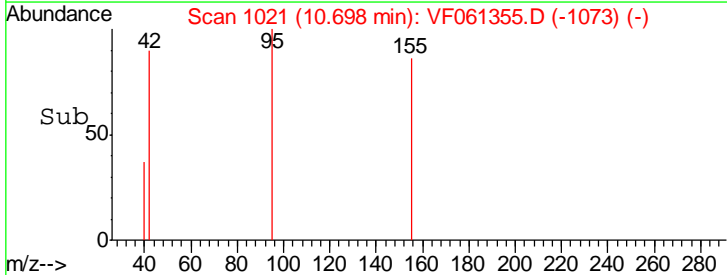
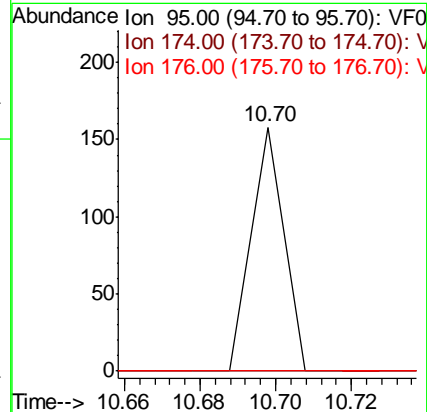
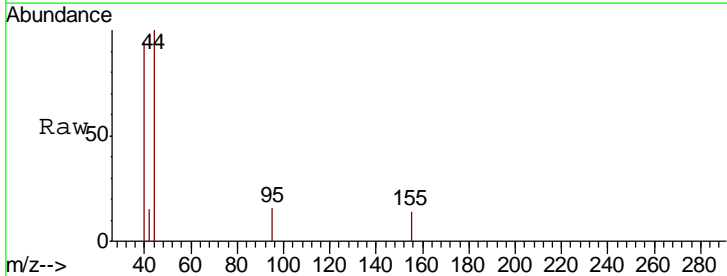
#59
 2-Hexanone
 Concen: 666.178 ug/l
 RT: 8.97 min Scan# 846
 Delta R.T. -0.53 min
 Lab File: VF061355.D
 Acq: 10 Jan 2019 20:35

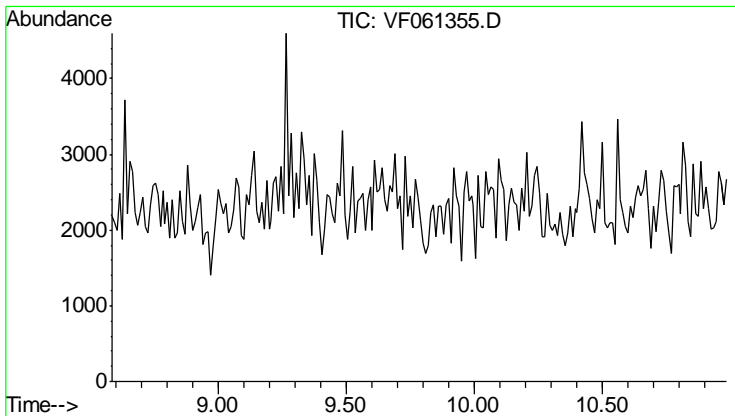
Tgt Ion	Resp	Lower	Upper
43	100		
58	0.0	25.6	76.8#



#62
 4-Bromofluorobenzene
 Concen: 140.387 ug/l
 RT: 10.70 min Scan# 1021
 Delta R.T. -0.72 min
 Lab File: VF061355.D
 Acq: 10 Jan 2019 20:35

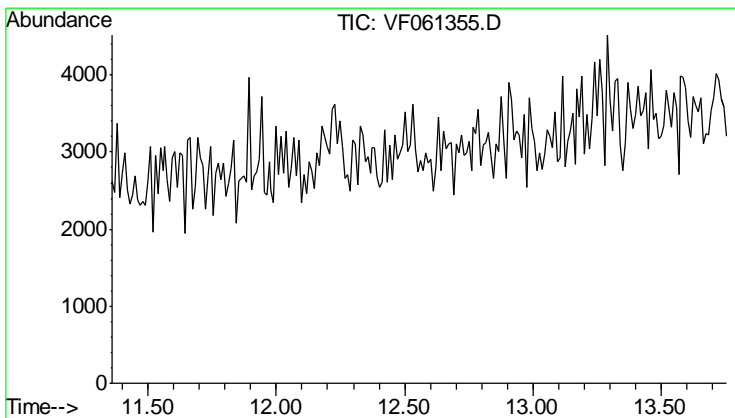
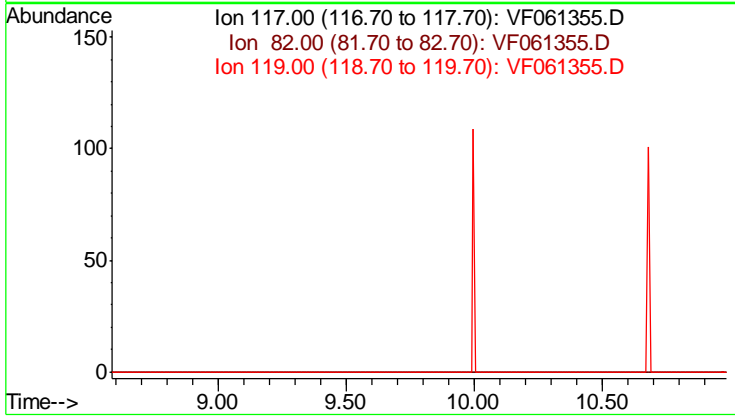
Tgt Ion	Resp	Lower	Upper
95	100		
174	0.0	0.0	114.2
176	0.0	0.0	117.8





#63
 Chlorobenzene-d5
 Concen: 0.000 ug/l
 Expected RT: 9.79 min
 Lab File: VF061355.D
 Acq: 10 Jan 2019 20:35

Tgt Ion	Exp Ratio
117	100
82	56.6
119	31.7



#72
 1,4-Dichlorobenzene-d4
 Concen: 0.000 ug/l
 Expected RT: 12.56 min
 Lab File: VF061355.D
 Acq: 10 Jan 2019 20:35

Tgt Ion	Exp Ratio
152	100
115	59.3
150	157.7

