

Data Path : Z:\VOASRV\HPCHEM1\MSVOA F\DATA\VF011019\
 Data File : VF061357.D
 Acq On : 10 Jan 2019 21:33
 Operator : VA/AP
 Sample : K1005-03
 Misc : 6.49µ/5mL/MSVOA-F/SOIL
 ALS Vial : 21 Sample Multiplier: 1

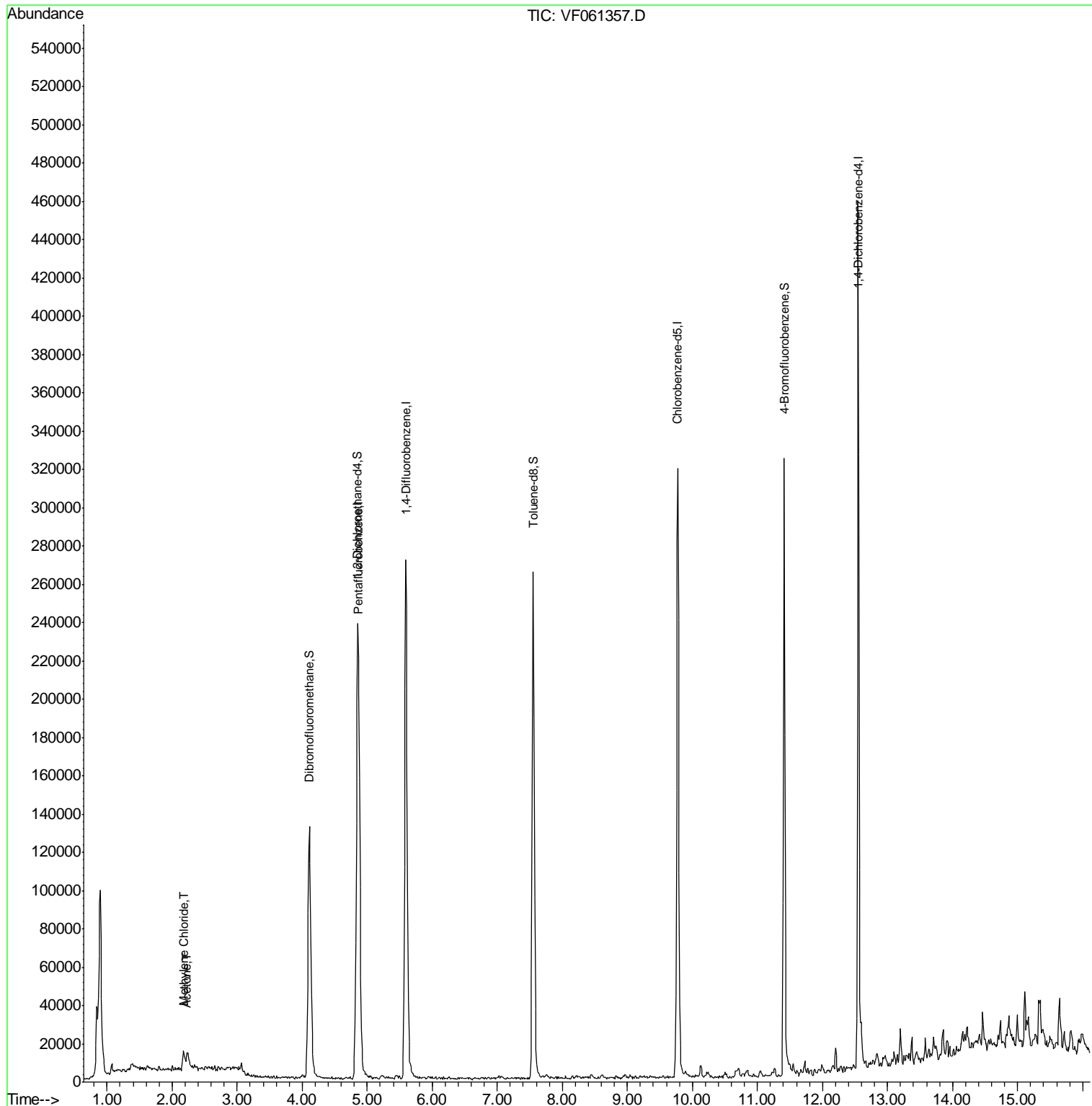
Quant Time: Jan 11 01:23:45 2019
 Quant Method : Z:\HPCHEM1\MSVOA_F\METHODS\82F010819S.M
 Quant Title : SW846 8260
 QLast Update : Wed Jan 09 07:13:51 2019
 Response via : Initial Calibration

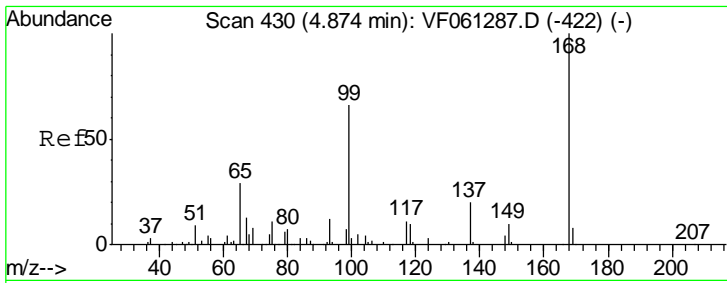
Internal Standards	R.T.	QIon	Response	Conc	Units	Dev(Min)
1) Pentafluorobenzene	4.87	168	165525	50.00	µg/l	0.00
34) 1,4-Difluorobenzene	5.59	114	305457	50.00	µg/l	-0.01
63) Chlorobenzene-d5	9.78	117	233268	50.00	µg/l	-0.01
72) 1,4-Dichlorobenzene-d4	12.55	152	109284	50.00	µg/l	-0.01
System Monitoring Compounds						
33) 1,2-Dichloroethane-d4	4.84	65	124973	67.83	µg/l	-0.01
Spiked Amount				50.000		
				Recovery	=	135.66%
35) Dibromofluoromethane	4.11	113	128144	54.83	µg/l	0.00
Spiked Amount				50.000		
				Recovery	=	109.66%
50) Toluene-d8	7.56	98	228467	33.03	µg/l	-0.01
Spiked Amount				50.000		
				Recovery	=	66.06%
62) 4-Bromofluorobenzene	11.41	95	126561	41.91	µg/l	0.00
Spiked Amount				50.000		
				Recovery	=	83.82%
Target Compounds						
16) Acetone	2.24	43	7856	18.330	µg/l #	81
20) Methylene Chloride	2.18	84	7298m	4.025	µg/l	

(#) = qualifier out of range (m) = manual integration (+) = signals summed

Data Path : Z:\VOASRV\HPCHEM1\MSVOA F\DATA\VF011019\
 Data File : VF061357.D
 Acq On : 10 Jan 2019 21:33
 Operator : VA/AP
 Sample : K1005-03
 Misc : 6.49µ/5mL/MSVOA-F/SOIL
 ALS Vial : 21 Sample Multiplier: 1

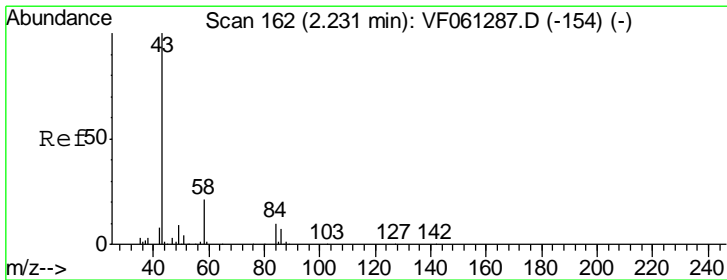
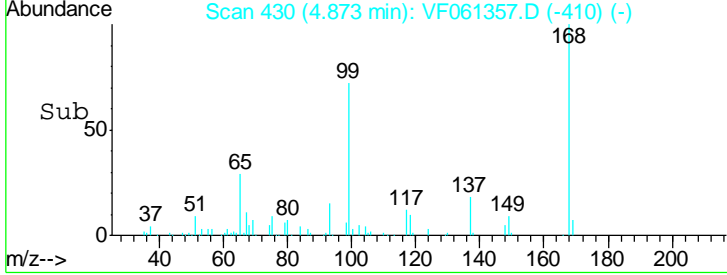
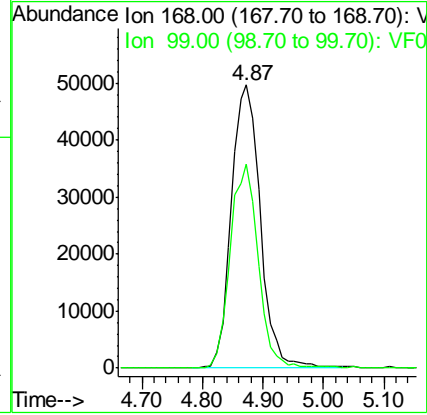
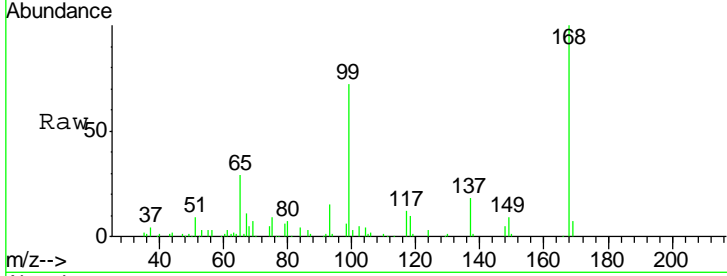
Quant Time: Jan 11 01:23:45 2019
 Quant Method : Z:\HPCHEM1\MSVOA_F\METHODS\82F010819S.M
 Quant Title : SW846 8260
 QLast Update : Wed Jan 09 07:13:51 2019
 Response via : Initial Calibration





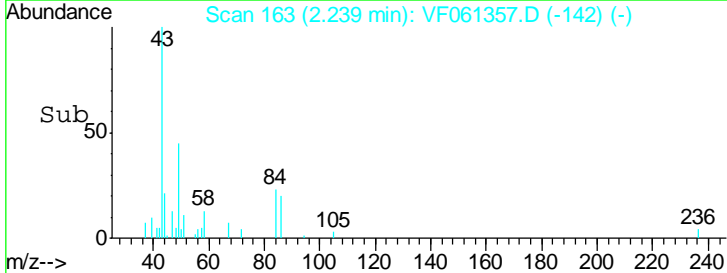
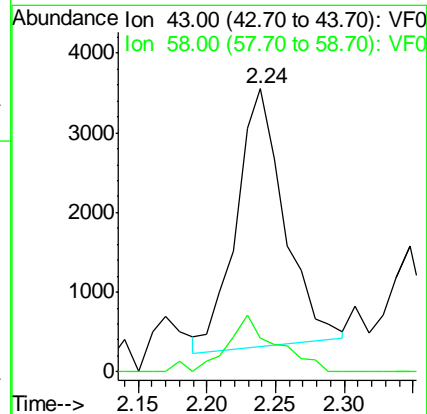
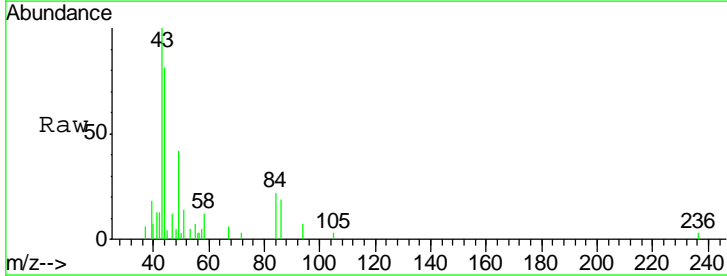
#1
 Pentafluorobenzene
 Concen: 50.000 ug/l
 RT: 4.87 min Scan# 430
 Delta R.T. -0.00 min
 Lab File: VF061357.D
 Acq: 10 Jan 2019 21:33

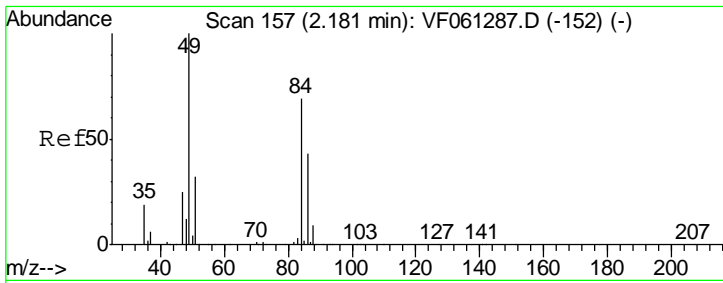
Tgt Ion	Resp	Lower	Upper
168	100		
99	72.3	52.7	79.1



#16
 Acetone
 Concen: 18.330 ug/l
 RT: 2.24 min Scan# 163
 Delta R.T. 0.01 min
 Lab File: VF061357.D
 Acq: 10 Jan 2019 21:33

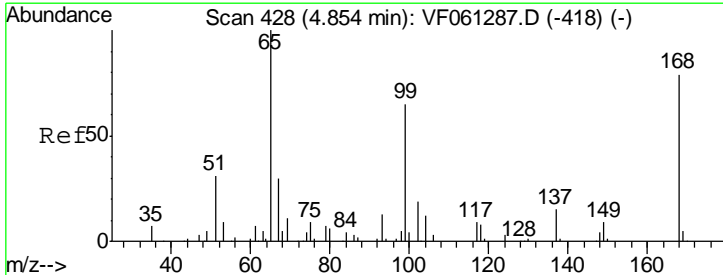
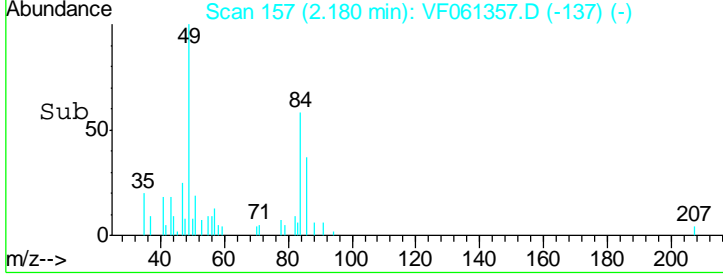
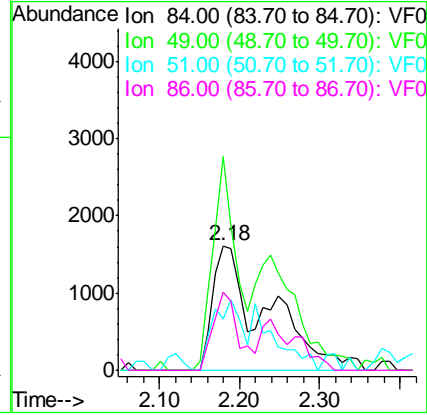
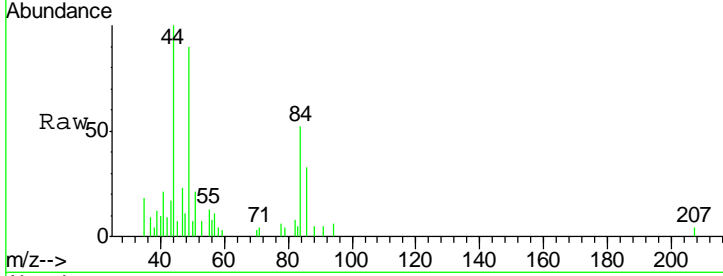
Tgt Ion	Resp	Lower	Upper
43	100		
58	11.9	16.6	25.0#





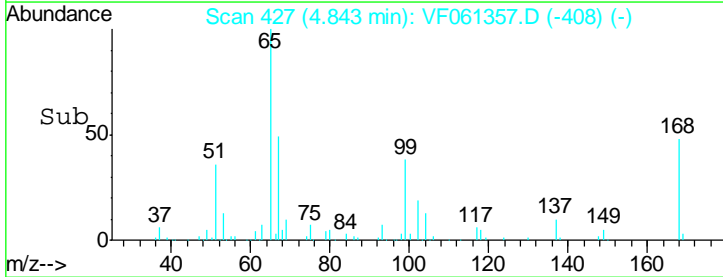
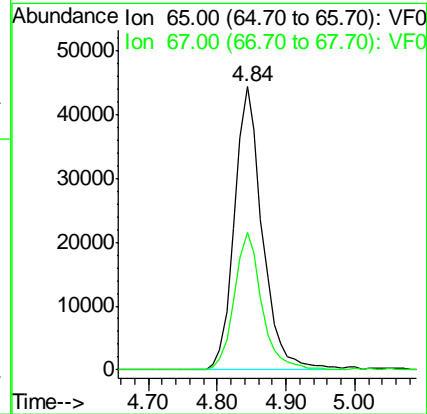
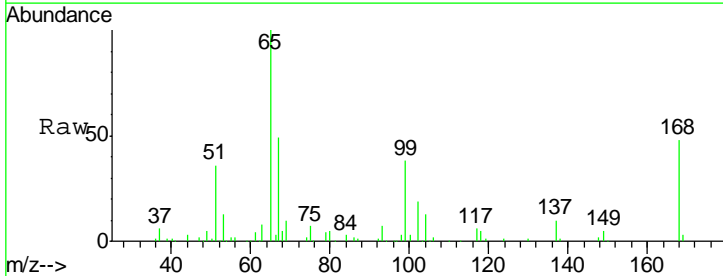
#20
Methylene Chloride
Concen: 4.025 ug/l m
RT: 2.18 min Scan# 157
Delta R.T. -0.00 min
Lab File: VF061357.D
Acq: 10 Jan 2019 21:33

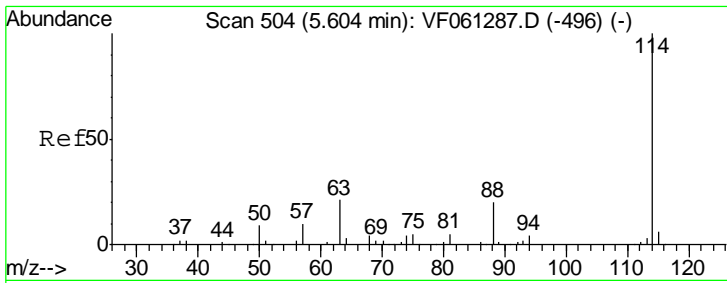
Tgt Ion	Resp	Lower	Upper
84	100		
49	172.0	116.6	175.0
51	40.9	37.7	56.5
86	62.9	49.8	74.8



#33
1,2-Dichloroethane-d4
Concen: 67.832 ug/l
RT: 4.84 min Scan# 427
Delta R.T. -0.01 min
Lab File: VF061357.D
Acq: 10 Jan 2019 21:33

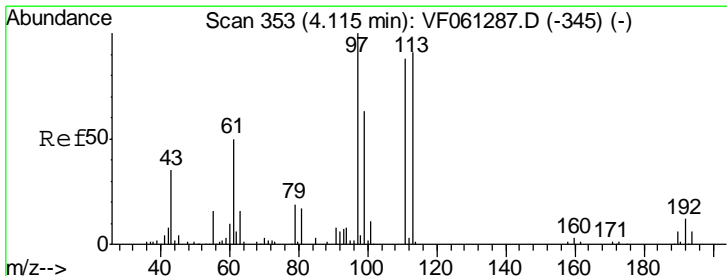
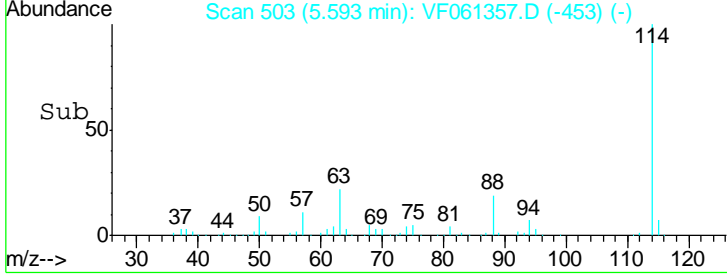
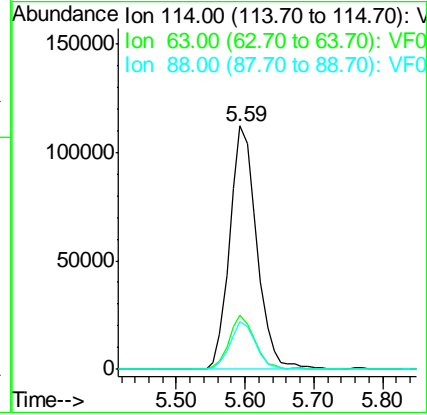
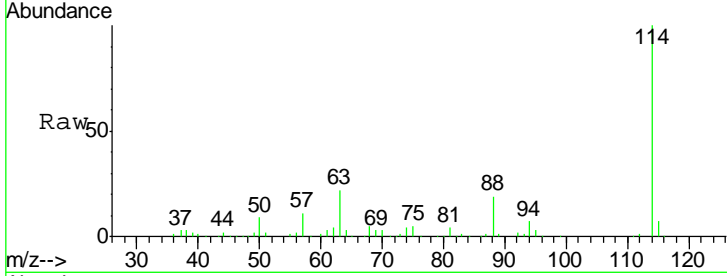
Tgt Ion	Resp	Lower	Upper
65	100		
67	48.7	0.0	98.2





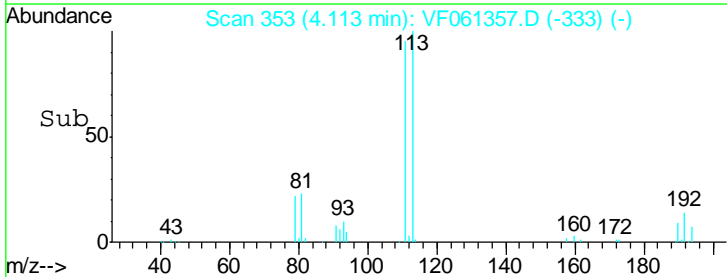
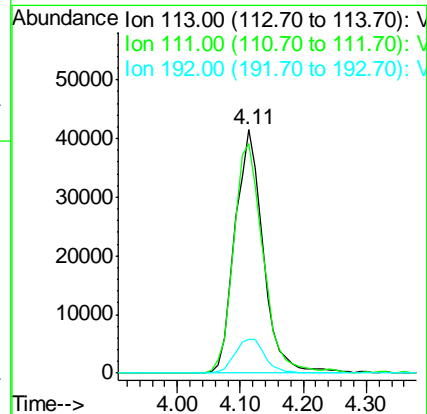
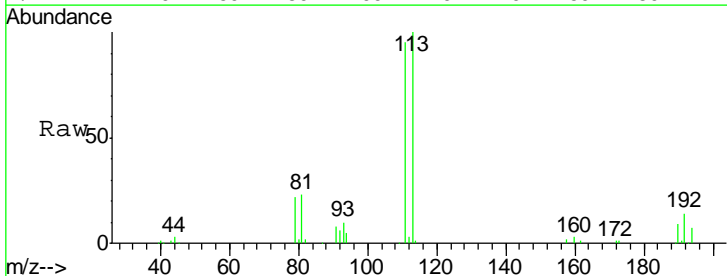
#34
 1,4-Difluorobenzene
 Concen: 50.000 ug/l
 RT: 5.59 min Scan# 503
 Delta R.T. -0.01 min
 Lab File: VF061357.D
 Acq: 10 Jan 2019 21:33

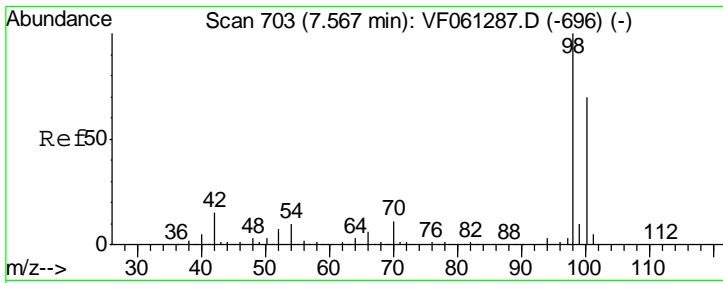
Tgt Ion	Resp	Lower	Upper
114	305457		
63	22.4	0.0	42.8
88	19.4	0.0	40.0



#35
 Dibromofluoromethane
 Concen: 54.827 ug/l
 RT: 4.11 min Scan# 353
 Delta R.T. -0.00 min
 Lab File: VF061357.D
 Acq: 10 Jan 2019 21:33

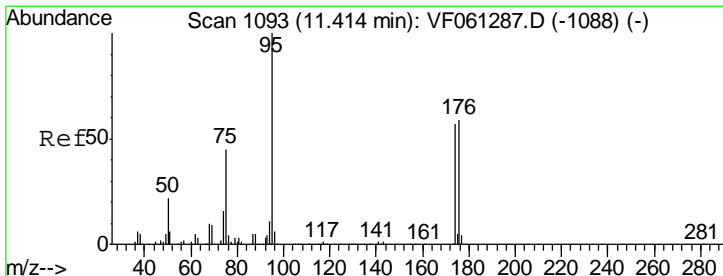
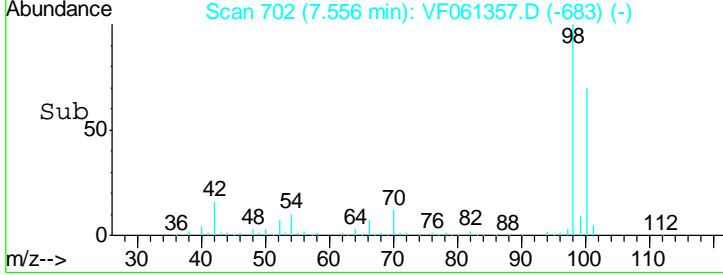
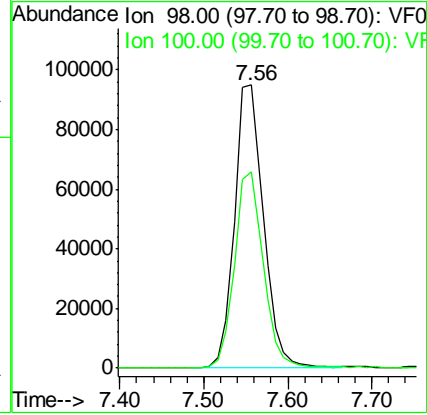
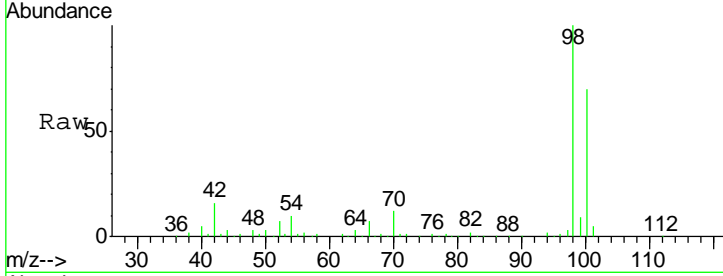
Tgt Ion	Resp	Lower	Upper
113	128144		
111	94.5	78.0	117.0
192	13.7	10.6	16.0





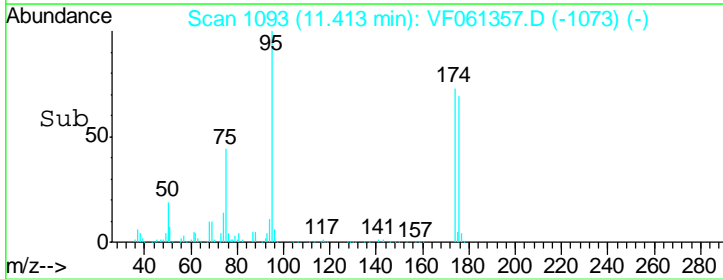
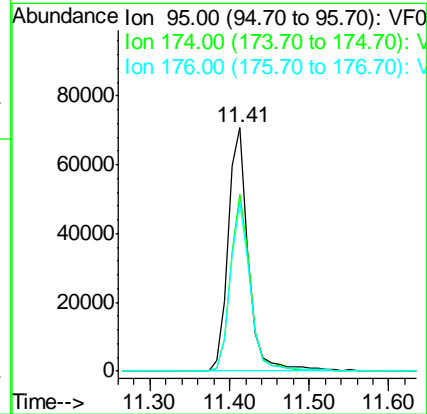
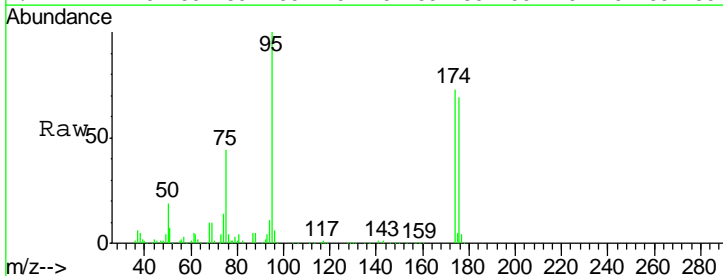
#50
 Toluene-d8
 Concen: 33.032 ug/l
 RT: 7.56 min Scan# 702
 Delta R.T. -0.01 min
 Lab File: VF061357.D
 Acq: 10 Jan 2019 21:33

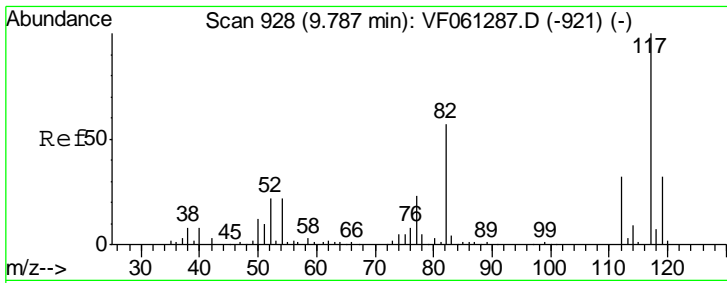
Tgt Ion	Resp	Lower	Upper
98	228467		
100	69.5	55.6	83.4



#62
 4-Bromofluorobenzene
 Concen: 41.905 ug/l
 RT: 11.41 min Scan# 1093
 Delta R.T. -0.00 min
 Lab File: VF061357.D
 Acq: 10 Jan 2019 21:33

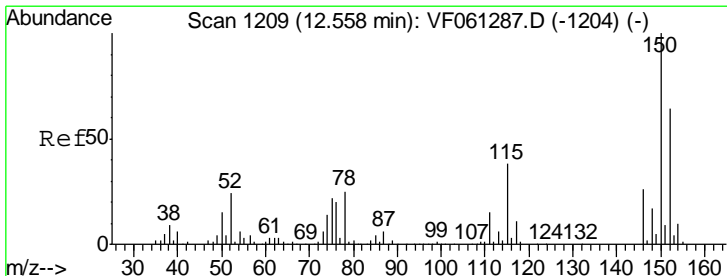
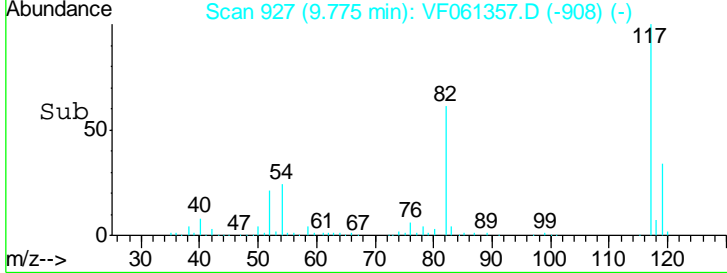
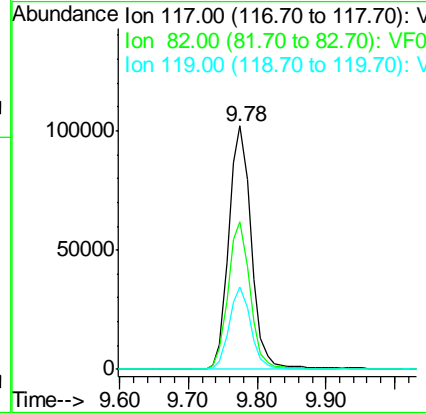
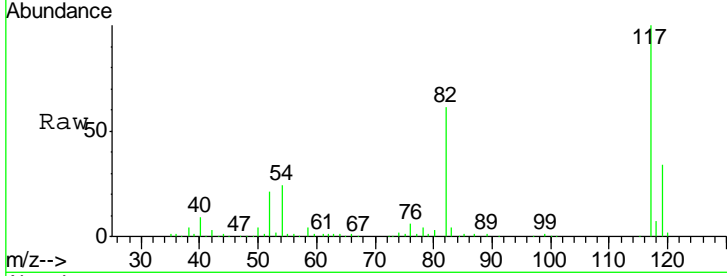
Tgt Ion	Resp	Lower	Upper
95	126561		
174	72.7	0.0	114.2
176	69.4	0.0	117.8





#63
 Chlorobenzene-d5
 Concen: 50.000 ug/l
 RT: 9.78 min Scan# 927
 Delta R.T. -0.01 min
 Lab File: VF061357.D
 Acq: 10 Jan 2019 21:33

Tgt Ion	Resp	Lower	Upper
117	233268		
82	60.6	45.3	67.9
119	34.0	25.4	38.0



#72
 1,4-Dichlorobenzene-d4
 Concen: 50.000 ug/l
 RT: 12.55 min Scan# 1208
 Delta R.T. -0.01 min
 Lab File: VF061357.D
 Acq: 10 Jan 2019 21:33

Tgt Ion	Resp	Lower	Upper
152	109284		
115	65.9	29.6	88.9
150	156.6	0.0	315.4

