

Data Path : Z:\VOASRV\HPCHEM1\MSVOA F\DATA\VF011019\
 Data File : VF061339.D
 Acq On : 10 Jan 2019 12:48
 Operator : VA/AP
 Sample : VF0110SBL01
 Misc : 5.00µ/5mL/MSVOA-F/SOIL
 ALS Vial : 3 Sample Multiplier: 1

Integration Parameters: RTEINT.P

Integrator: RTE
 Smoothing : ON Filtering: 5
 Sampling : 1 Min Area: 3 % of largest Peak
 Start Thrs: 0.2 Max Peaks: 100
 Stop Thrs : 0 Peak Location: TOP

If leading or trailing edge < 100 prefer < Baseline drop else tangent >
 Peak separation: 5

Method : Z:\VOASRV\HPCHEM1\MSVOA_F\METHODS\82F010819S.M
 Title : SW846 8260

Signal : TIC

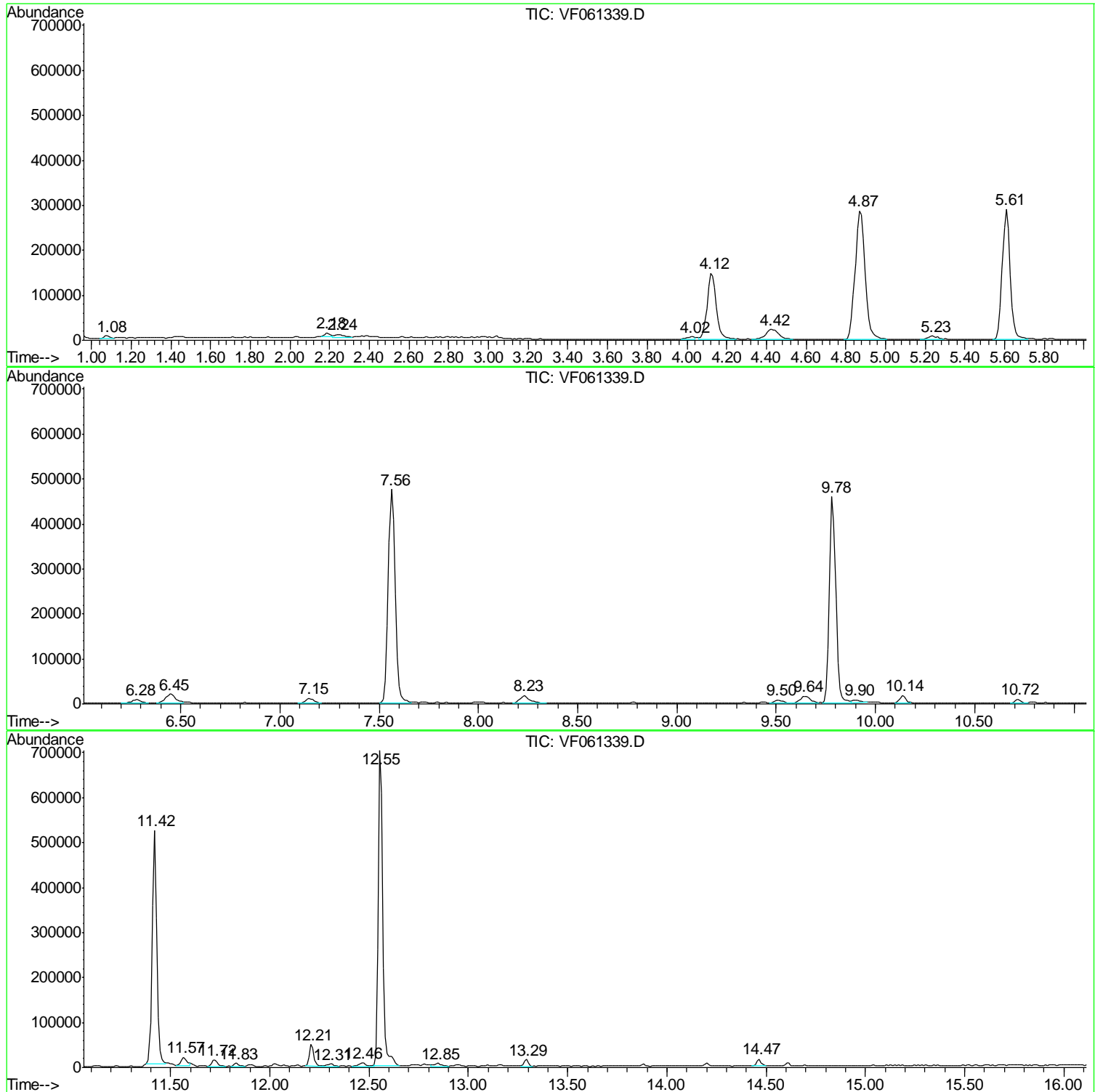
peak #	R.T. min	first scan	max scan	last scan	PK TY	peak height	corr. area	corr. % max.	% of total
1	1.080	42	46	49	rBV2	6340	12807	1.10%	0.178%
2	2.185	155	158	161	rBV2	9157	16605	1.43%	0.231%
3	2.244	161	164	171	rVB6	6224	16967	1.46%	0.236%
4	4.020	339	344	346	rBV4	5514	16319	1.40%	0.227%
5	4.118	348	354	367	rVB	147133	471252	40.53%	6.544%
6	4.424	375	385	396	rVB2	23030	105129	9.04%	1.460%
7	4.868	422	430	444	rBV2	286840	1018085	87.55%	14.137%
8	5.233	461	467	473	rBV5	7785	28311	2.43%	0.393%
9	5.608	498	505	516	rBV	289770	789338	67.88%	10.961%
10	6.279	565	573	579	rBV4	8533	29063	2.50%	0.404%
11	6.446	583	590	597	rBV2	20575	74122	6.37%	1.029%
12	7.147	655	661	667	rBV	11187	31397	2.70%	0.436%
13	7.561	697	703	713	rBV	474164	1117730	96.12%	15.521%
14	8.232	765	771	782	rVB2	16783	57441	4.94%	0.798%
15	9.504	896	900	907	rVB4	6372	17278	1.49%	0.240%
16	9.642	907	914	921	rBV3	15399	53500	4.60%	0.743%
17	9.780	923	928	938	rVV	457589	1004234	86.36%	13.945%
18	9.899	938	940	946	rVB3	5855	14855	1.28%	0.206%
19	10.136	960	964	968	rBV2	16232	34649	2.98%	0.481%
20	10.718	1019	1023	1028	rVB2	9211	16958	1.46%	0.235%
21	11.418	1090	1094	1100	rBV	519865	856216	73.63%	11.890%
22	11.566	1105	1109	1112	rBV	18340	34392	2.96%	0.478%
23	11.724	1121	1125	1130	rVV2	14365	29964	2.58%	0.416%
24	11.832	1133	1136	1140	rVV3	7554	14933	1.28%	0.207%
25	12.207	1171	1174	1180	rVV	47841	75756	6.51%	1.052%
26	12.306	1180	1184	1188	rVB3	5193	13221	1.14%	0.184%
27	12.464	1195	1200	1206	rBV4	7677	20696	1.78%	0.287%
28	12.552	1206	1209	1219	rVB	700712	1162821	100.00%	16.147%
29	12.848	1235	1239	1244	rVV2	7419	17606	1.51%	0.244%
30	13.292	1281	1284	1287	rVB2	15045	24839	2.14%	0.345%
31	14.466	1399	1403	1406	rBV2	15841	24941	2.14%	0.346%

Sum of corrected areas: 7201425

Data Path : Z:\VOASRV\HPCHEM1\MSVOA F\DATA\VF011019\
Data File : VF061339.D
Acq On : 10 Jan 2019 12:48
Operator : VA/AP
Sample : VF0110SBL01
Misc : 5.00µ/5mL/MSVOA-F/SOIL
ALS Vial : 3 Sample Multiplier: 1

Quant Method : Z:\HPCHEM1\MSVOA_F\METHODS\82F010819S.M
Quant Title : SW846 8260

TIC Library : C:\DATABASE\NIST11.L
TIC Integration Parameters: LSCINT.P



Data Path : Z:\VOASRV\HPCHEM1\MSVOA_F\DATA\VF011019\
Data File : VF061339.D
Acq On : 10 Jan 2019 12:48
Operator : VA/AP
Sample : VF0110SBL01
Misc : 5.00g/5mL/MSVOA-F/SOIL
ALS Vial : 3 Sample Multiplier: 1

Quant Method : Z:\HPCHEM1\MSVOA_F\METHODS\82F010819S.M
Quant Title : SW846 8260

TIC Library : C:\DATABASE\NIST11.L
TIC Integration Parameters: LSCINT.P

No Library Search Compounds Detected

Data Path : Z:\VOASRV\HPCHEM1\MSVOA_F\DATA\VF011019\
Data File : VF061339.D
Acq On : 10 Jan 2019 12:48
Operator : VA/AP
Sample : VF0110SBL01
Misc : 5.00g/5mL/MSVOA-F/SOIL
ALS Vial : 3 Sample Multiplier: 1

Quant Method : Z:\HPCHEM1\MSVOA_F\METHODS\82F010819S.M
Quant Title : SW846 8260

TIC Library : C:\DATABASE\NIST11.L
TIC Integration Parameters: LSCINT.P

TIC Top Hit name	RT	EstConc	Units	Response	--Internal Standard--			
					#	RT	Resp	Conc
