

Data Path : Z:\VOASRV\HPCHEM1\MSVOA F\DATA\VF011119\
 Data File : VF061379.D
 Acq On : 11 Jan 2019 20:30
 Operator : VA/AP
 Sample : K1075-20RE
 Misc : 5.15µ/5mL/MSVOA-F/SOIL
 ALS Vial : 41 Sample Multiplier: 1

Instrument :
 MSVOA_F
Client Sampled :
 BASIN-10

Manual Integrations
APPROVED
 MMDadoda
 1/14/2019 1:17:15 PM

Quant Time: Jan 12 04:40:49 2019
 Quant Method : Z:\VOASRV\HPCHEM1\MSVOA_F\METHODS\82F010819S.M
 Quant Title : SW846 8260
 QLast Update : Wed Jan 09 07:13:51 2019
 Response via : Initial Calibration

Internal Standards	R.T.	QIon	Response	Conc	Units	Dev(Min)
1) Pentafluorobenzene	4.85	168	180398	50.00	µg/l	-0.02
34) 1,4-Difluorobenzene	5.57	114	355370	50.00	µg/l	-0.03
63) Chlorobenzene-d5	9.75	117	272909	50.00	µg/l	-0.03
72) 1,4-Dichlorobenzene-d4	12.53	152	102902	50.00	µg/l	-0.02
System Monitoring Compounds						
33) 1,2-Dichloroethane-d4	4.82	65	113836	56.69	µg/l	-0.03
Spiked Amount	50.000		Recovery	=	113.38%	
35) Dibromofluoromethane	4.09	113	135757	49.93	µg/l	-0.02
Spiked Amount	50.000		Recovery	=	99.86%	
50) Toluene-d8	7.53	98	352418	43.80	µg/l	-0.03
Spiked Amount	50.000		Recovery	=	87.60%	
62) 4-Bromofluorobenzene	11.39	95	130792	37.22	µg/l	-0.02
Spiked Amount	50.000		Recovery	=	74.44%	
Target Compounds						
20) Methylene Chloride	2.17	84	9734m	4.926	µg/l	Qvalue

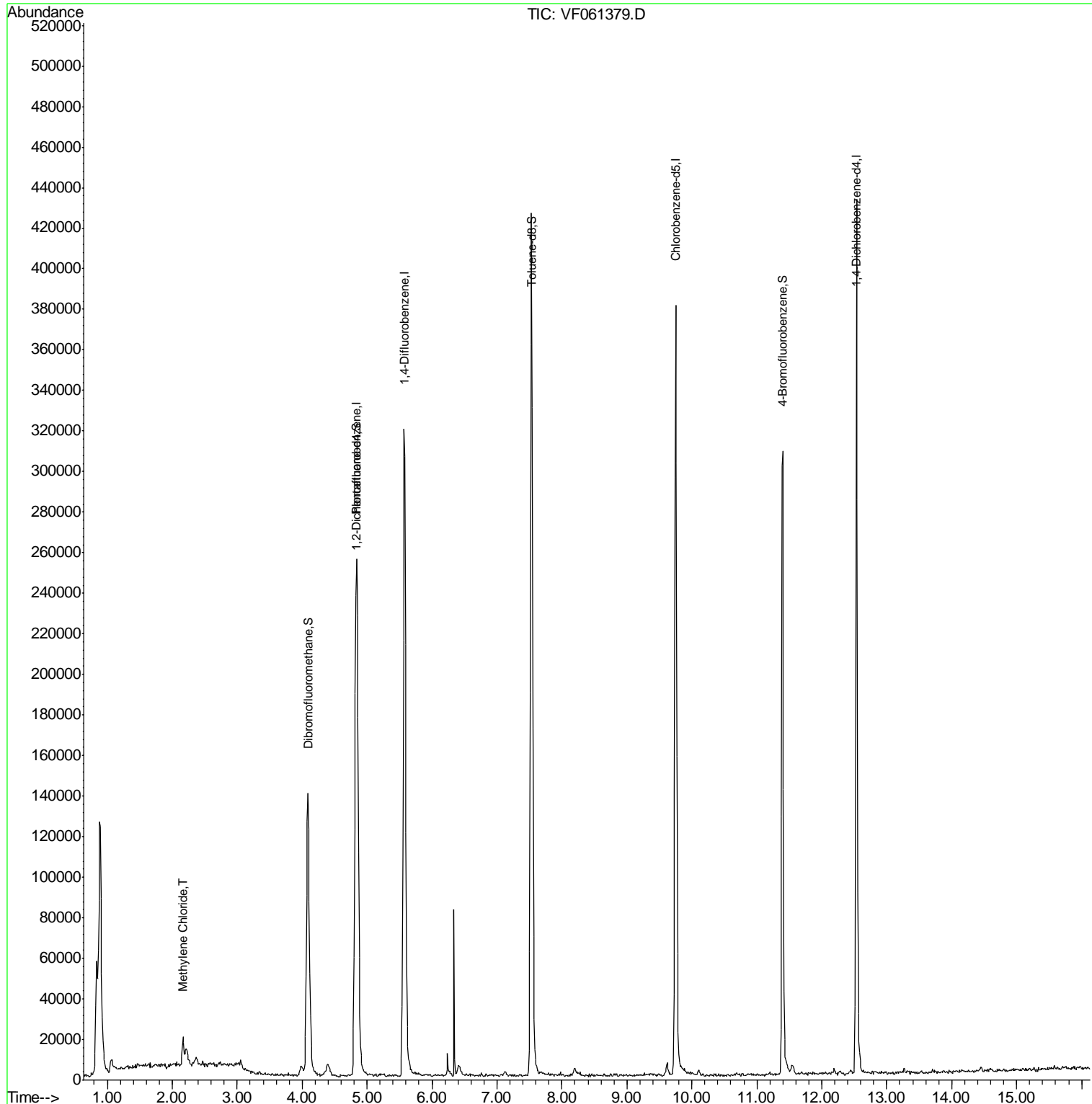
(#) = qualifier out of range (m) = manual integration (+) = signals summed

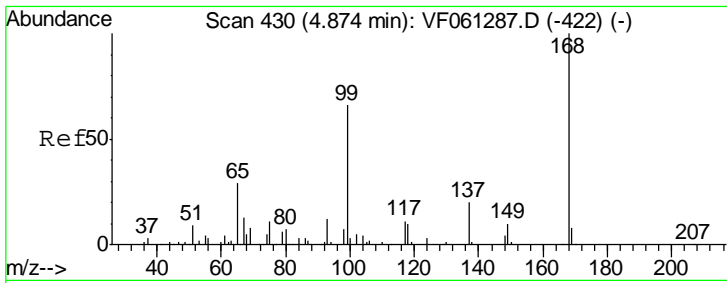
Data Path : Z:\VOASRV\HPCHEM1\MSVOA F\DATA\VF011119\
 Data File : VF061379.D
 Acq On : 11 Jan 2019 20:30
 Operator : VA/AP
 Sample : K1075-20RE
 Misc : 5.15µ/5mL/MSVOA-F/SOIL
 ALS Vial : 41 Sample Multiplier: 1

Instrument :
 MSVOA_F
Client Sampled :
 BASIN-10

Manual Integrations
APPROVED
 MMDadoda
 1/14/2019 1:17:15 PM

Quant Time: Jan 12 04:40:49 2019
 Quant Method : Z:\VOASRV\HPCHEM1\MSVOA_F\METHODS\82F010819S.M
 Quant Title : SW846 8260
 QLast Update : Wed Jan 09 07:13:51 2019
 Response via : Initial Calibration





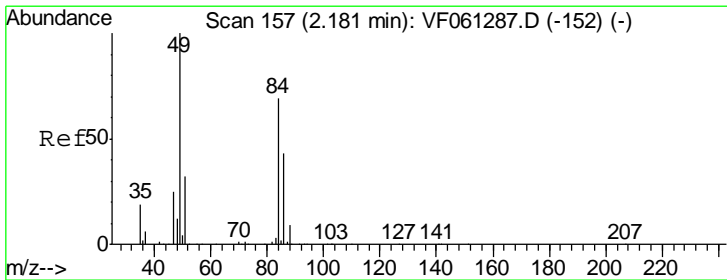
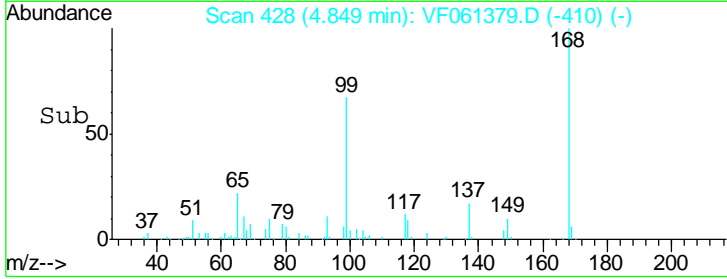
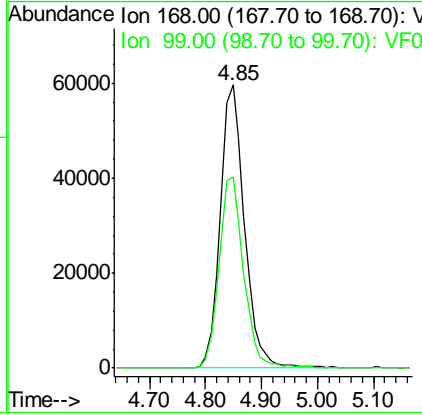
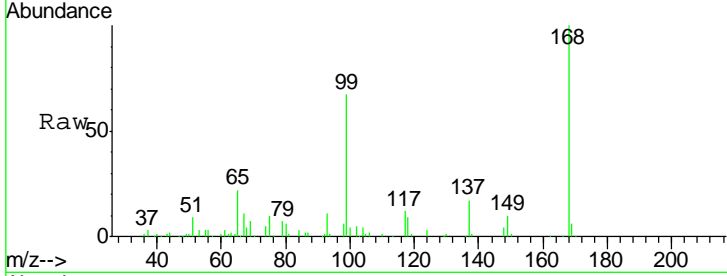
#1
 Pentafluorobenzene
 Concen: 50.000 ug/l
 RT: 4.85 min Scan# 428
 Delta R.T. -0.02 min
 Lab File: VF061379.D
 Acq: 11 Jan 2019 20:30

Instrument :
 MSVOA_F
 ClientSampled :
 BASIN-10

Tgt Ion	Resp	Lower	Upper
168	100		
99	67.4	52.7	79.1

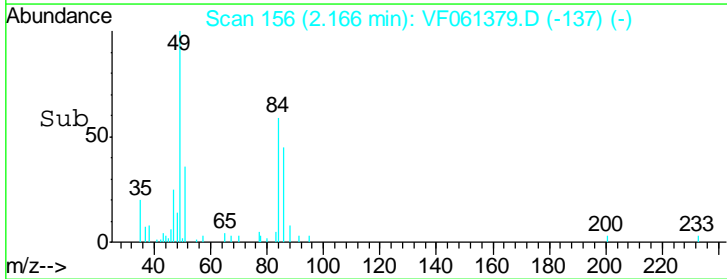
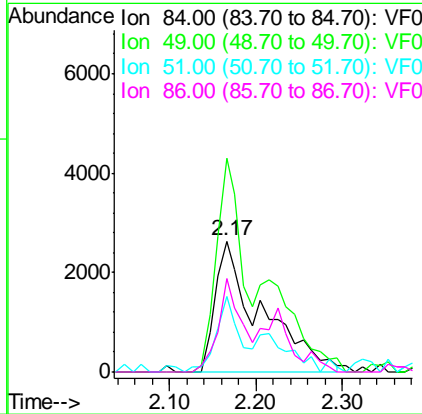
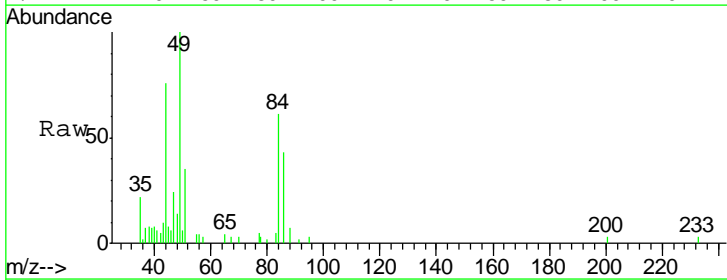
Manual Integrations
 APPROVED

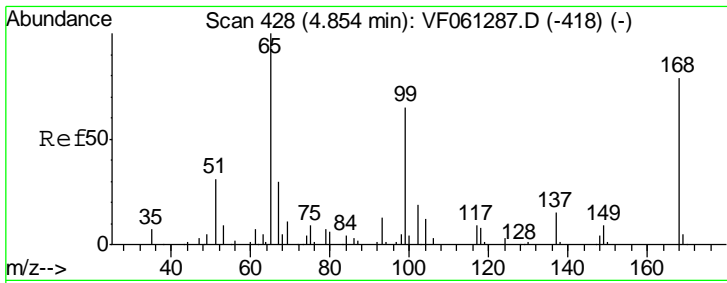
MMDadoda
 1/14/2019 1:17:15 PM



#20
 Methylene Chloride
 Concen: 4.926 ug/l m
 RT: 2.17 min Scan# 156
 Delta R.T. -0.02 min
 Lab File: VF061379.D
 Acq: 11 Jan 2019 20:30

Tgt Ion	Resp	Lower	Upper
84	100		
49	162.9	116.6	175.0
51	57.6	37.7	56.5#
86	70.8	49.8	74.8



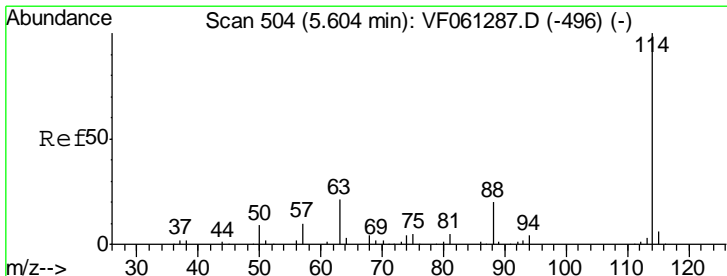
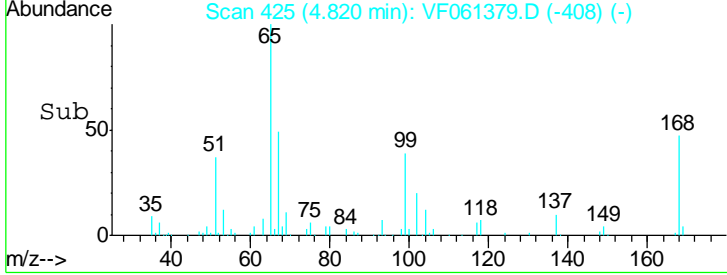
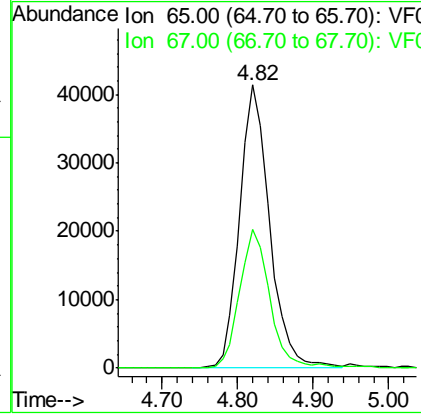
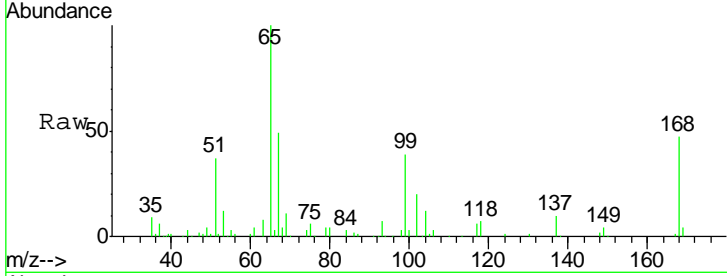


#33
 1,2-Dichloroethane-d4
 Concen: 56.693 ug/l
 RT: 4.82 min Scan# 425
 Delta R.T. -0.03 min
 Lab File: VF061379.D
 Acq: 11 Jan 2019 20:30

Instrument :
 MSVOA_F
 ClientSampled :
 BASIN-10

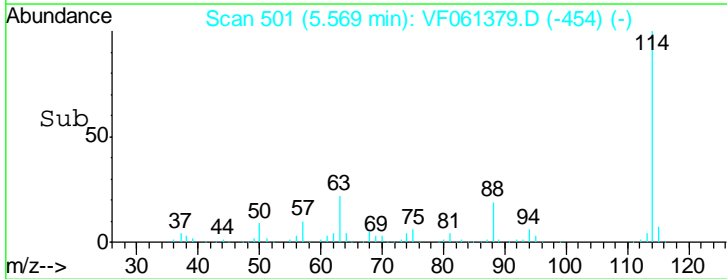
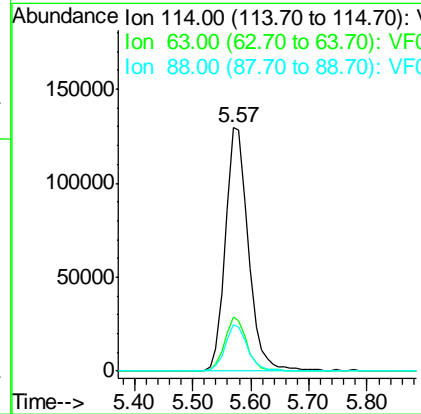
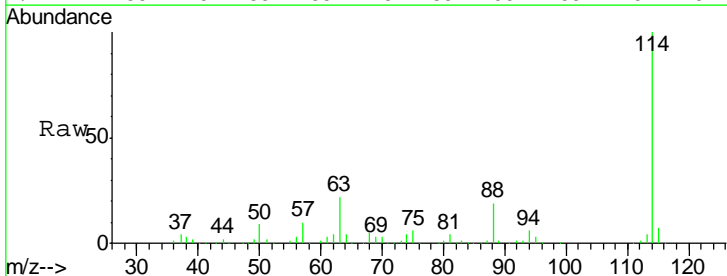
Tgt Ion	Resp	Lower	Upper
65	113836		
65	100		
67	49.1	0.0	98.2

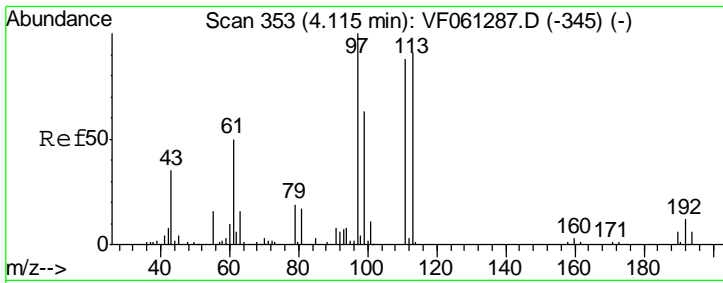
Manual Integrations
APPROVED
 MMDadoda
 1/14/2019 1:17:15 PM



#34
 1,4-Difluorobenzene
 Concen: 50.000 ug/l
 RT: 5.57 min Scan# 501
 Delta R.T. -0.03 min
 Lab File: VF061379.D
 Acq: 11 Jan 2019 20:30

Tgt Ion	Resp	Lower	Upper
114	355370		
114	100		
63	22.4	0.0	42.8
88	18.9	0.0	40.0





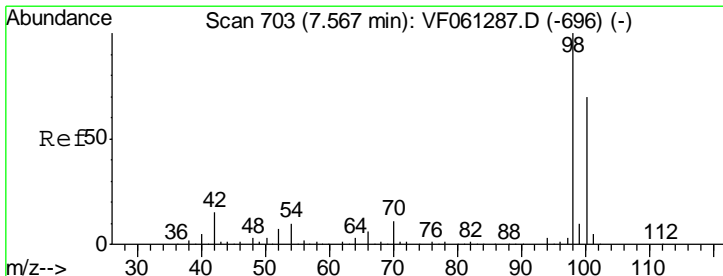
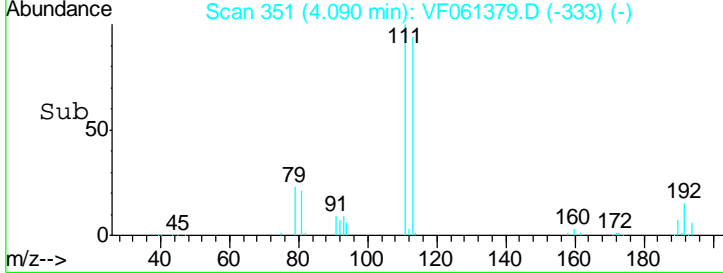
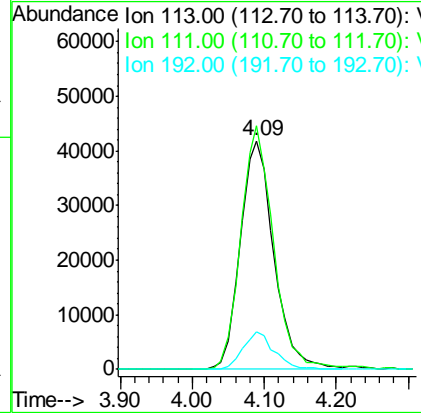
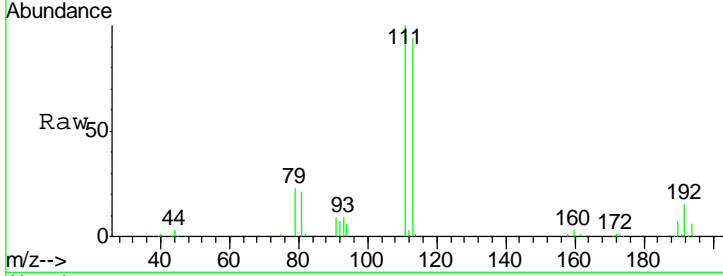
#35
 Dibromofluoromethane
 Concen: 49.926 ug/l
 RT: 4.09 min Scan# 351
 Delta R.T. -0.02 min
 Lab File: VF061379.D
 Acq: 11 Jan 2019 20:30

Instrument :
 MSVOA_F
ClientSampled :
 BASIN-10

Tgt Ion	Resp	Lower	Upper
113	100		
111	106.4	78.0	117.0
192	16.4	10.6	16.0

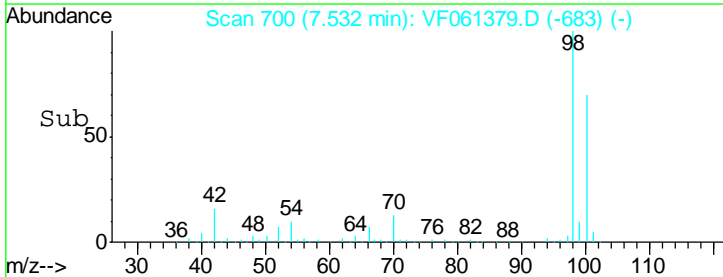
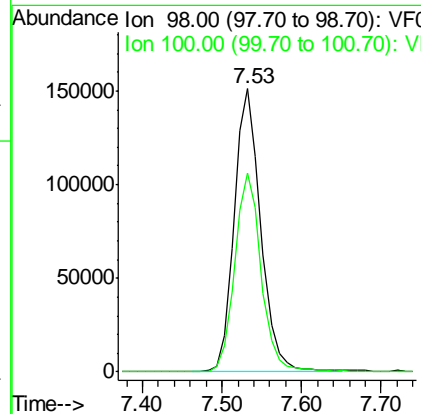
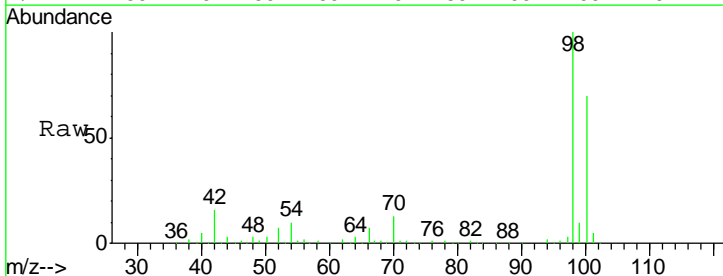
Manual Integrations
APPROVED

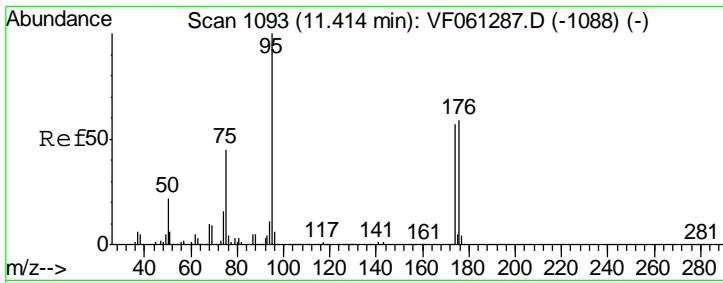
MMDadoda
 1/14/2019 1:17:15 PM



#50
 Toluene-d8
 Concen: 43.797 ug/l
 RT: 7.53 min Scan# 700
 Delta R.T. -0.03 min
 Lab File: VF061379.D
 Acq: 11 Jan 2019 20:30

Tgt Ion	Resp	Lower	Upper
98	100		
100	70.3	55.6	83.4



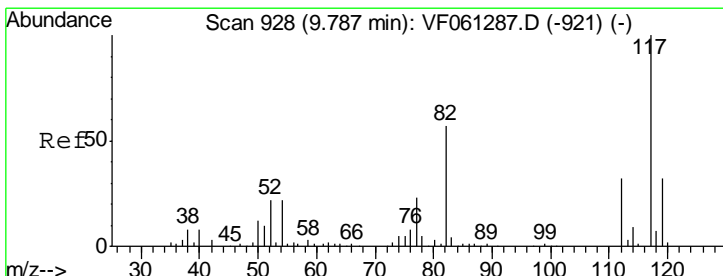
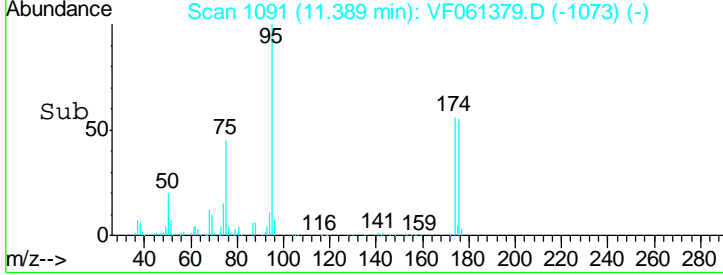
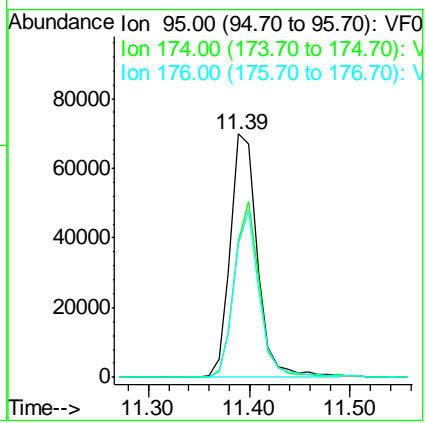
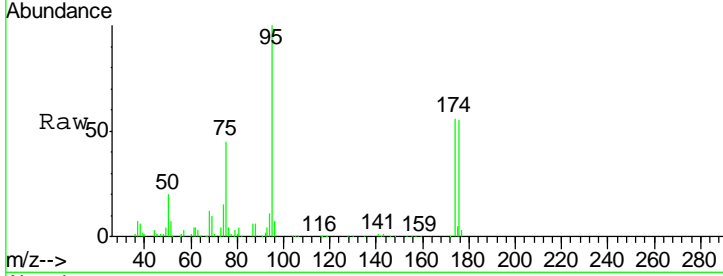


#62
 4-Bromofluorobenzene
 Concen: 37.224 ug/l
 RT: 11.39 min Scan# 1091
 Delta R.T. -0.02 min
 Lab File: VF061379.D
 Acq: 11 Jan 2019 20:30

Instrument : MSVOA_F
 ClientSampled : BASIN-10

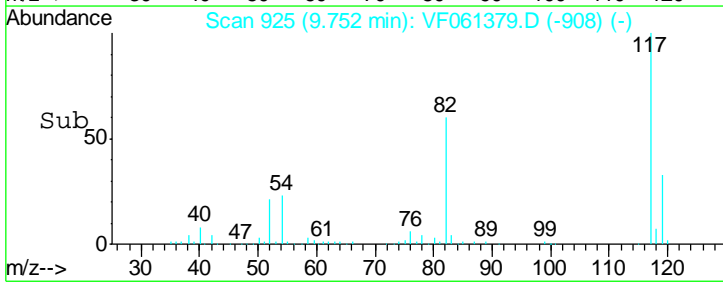
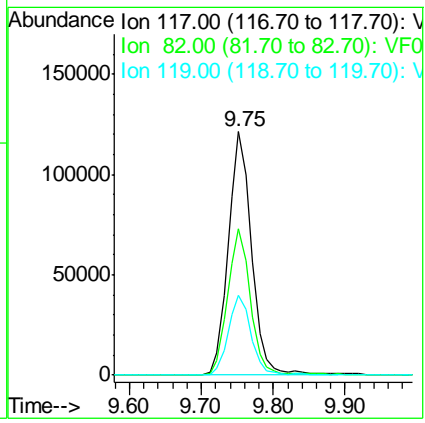
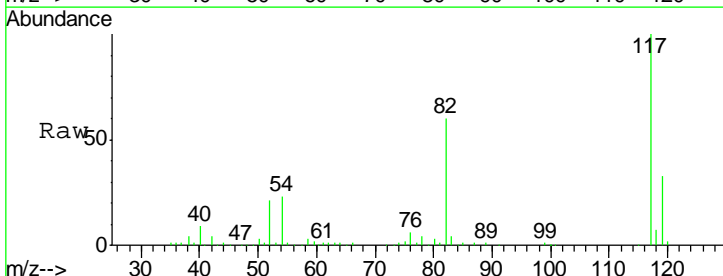
Tgt Ion	Resp	Lower	Upper
95	130792		
174	56.2	0.0	114.2
176	54.9	0.0	117.8

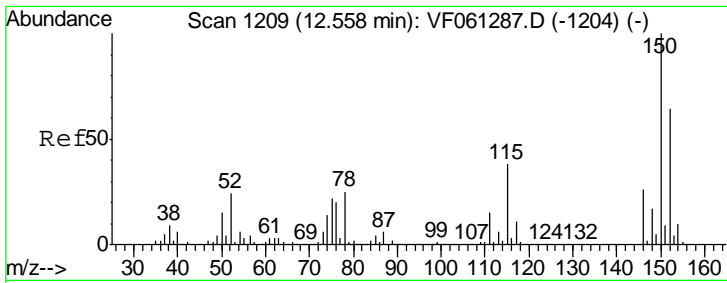
Manual Integrations
APPROVED
 MMDadoda
 1/14/2019 1:17:15 PM



#63
 Chlorobenzene-d5
 Concen: 50.000 ug/l
 RT: 9.75 min Scan# 925
 Delta R.T. -0.03 min
 Lab File: VF061379.D
 Acq: 11 Jan 2019 20:30

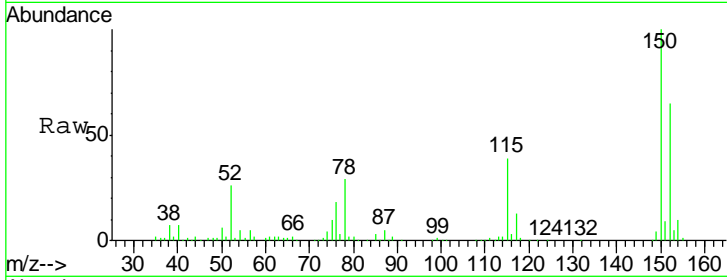
Tgt Ion	Resp	Lower	Upper
117	272909		
82	60.1	45.3	67.9
119	33.0	25.4	38.0





#72
 1,4-Dichlorobenzene-d4
 Concen: 50.000 ug/l
 RT: 12.53 min Scan# 1207
 Delta R.T. -0.02 min
 Lab File: VF061379.D
 Acq: 11 Jan 2019 20:30

Instrument :
 MSVOA_F
ClientSampled :
 BASIN-10



Tot Ion: 152 Resp: 102902

Ion	Ratio	Lower	Upper
152	100		
115	60.4	29.6	88.9
150	153.2	0.0	315.4

Manual Integrations
APPROVED
 MMDadoda
 1/14/2019 1:17:15 PM

