

Data Path : Z:\VOASRV\HPCHEM1\MSVOA F\DATA\VF011719\
 Data File : VF061442.D
 Acq On : 17 Jan 2019 14:00
 Operator : VA/AP
 Sample : K1157-04
 Misc : 5.01µ/5mL/MSVOA-F/SOIL
 ALS Vial : 8 Sample Multiplier: 1

Instrument :
 MSVOA_F
 ClientSampleId :
 WC-02-011519

Integration Parameters: RTEINT.P
 Integrator: RTE
 Smoothing : ON Filtering: 5
 Sampling : 1 Min Area: 3 % of largest Peak
 Start Thrs: 0.2 Max Peaks: 100
 Stop Thrs : 0 Peak Location: TOP

If leading or trailing edge < 100 prefer < Baseline drop else tangent >
 Peak separation: 5

Method : Z:\VOASRV\HPCHEM1\MSVOA_F\METHODS\82F011519S.M
 Title : SW846 8260

Signal : TIC

peak #	R.T. min	first scan	max scan	last scan	PK TY	peak height	corr. area	corr. % max.	% of total
1	1.100	43	48	50	rBV5	5084	15598	1.31%	0.247%
2	1.998	135	139	143	rBV5	5675	16007	1.34%	0.254%
3	2.165	152	156	160	rBV	12866	31421	2.64%	0.498%
4	2.372	173	177	182	rVB5	4936	16659	1.40%	0.264%
5	3.990	335	341	344	rBV2	5048	16836	1.41%	0.267%
6	4.089	344	351	363	rVB	171342	541011	45.42%	8.571%
7	4.838	416	427	437	rBV2	288602	1026605	86.19%	16.264%
8	5.578	496	502	514	rBV	331285	879789	73.87%	13.938%
9	7.531	694	700	713	rBV	472145	1191031	100.00%	18.868%
10	9.080	856	857	859	rBV	22197	15600	1.31%	0.247%
11	9.761	920	926	938	rBV	401301	927917	77.91%	14.700%
12	10.195	969	970	972	rBV	55245	36490	3.06%	0.578%
13	11.398	1088	1092	1106	rBV	441774	763608	64.11%	12.097%
14	11.645	1114	1117	1122	rBV2	10825	17916	1.50%	0.284%
15	12.543	1204	1208	1221	rVB	474682	815800	68.50%	12.924%

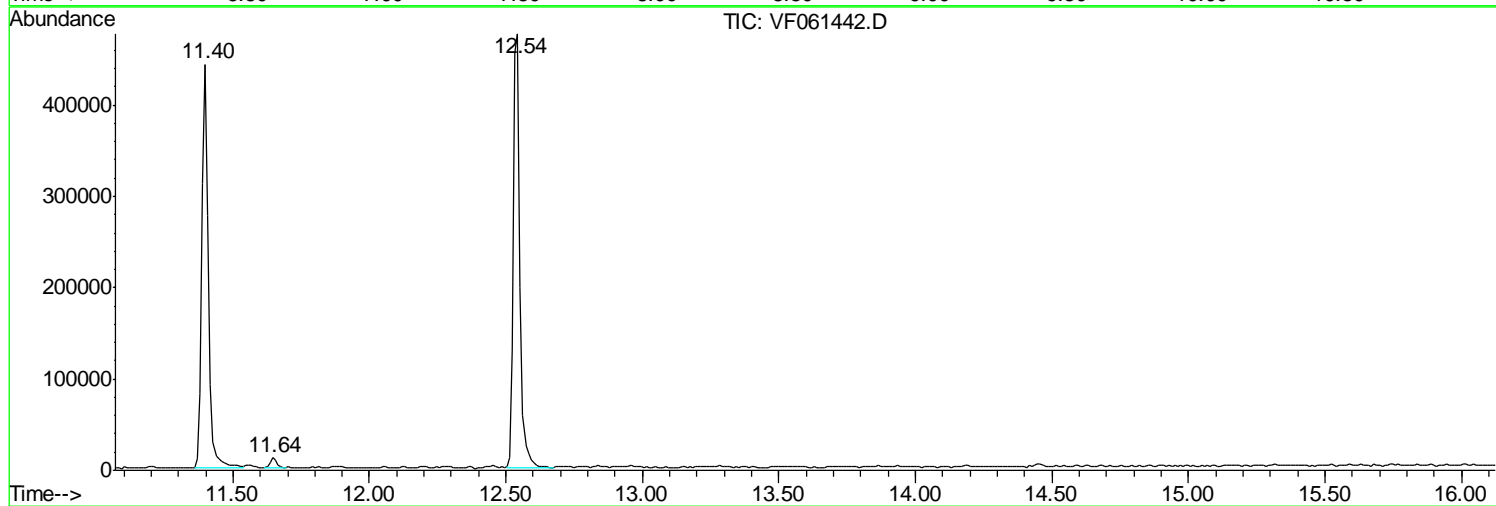
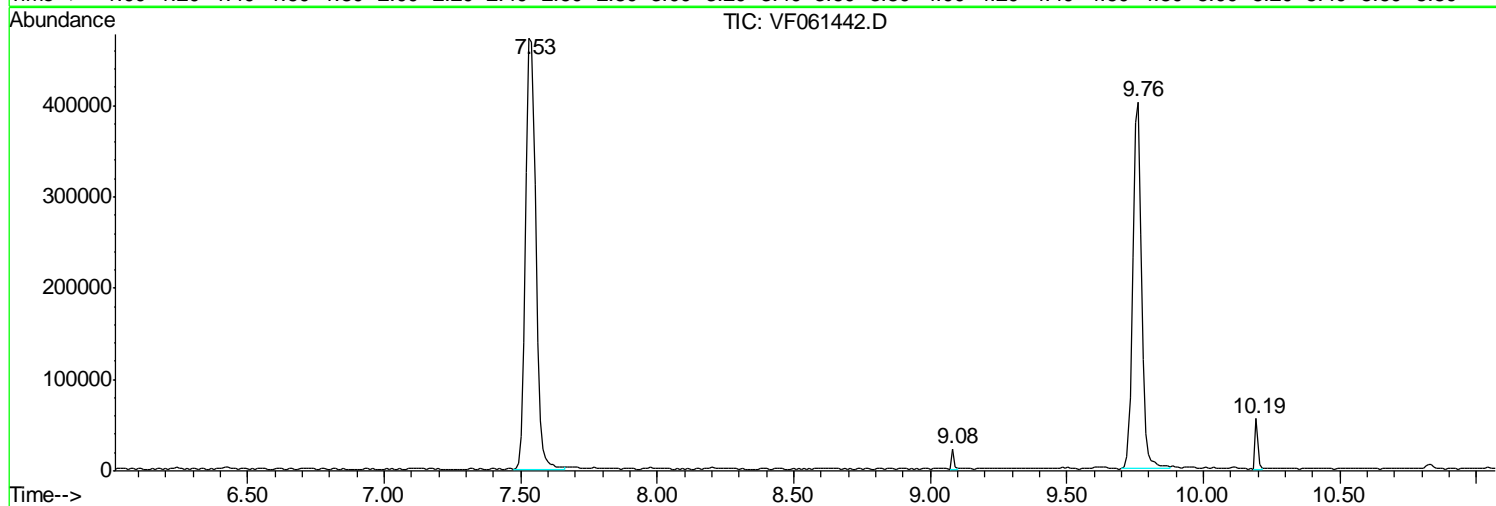
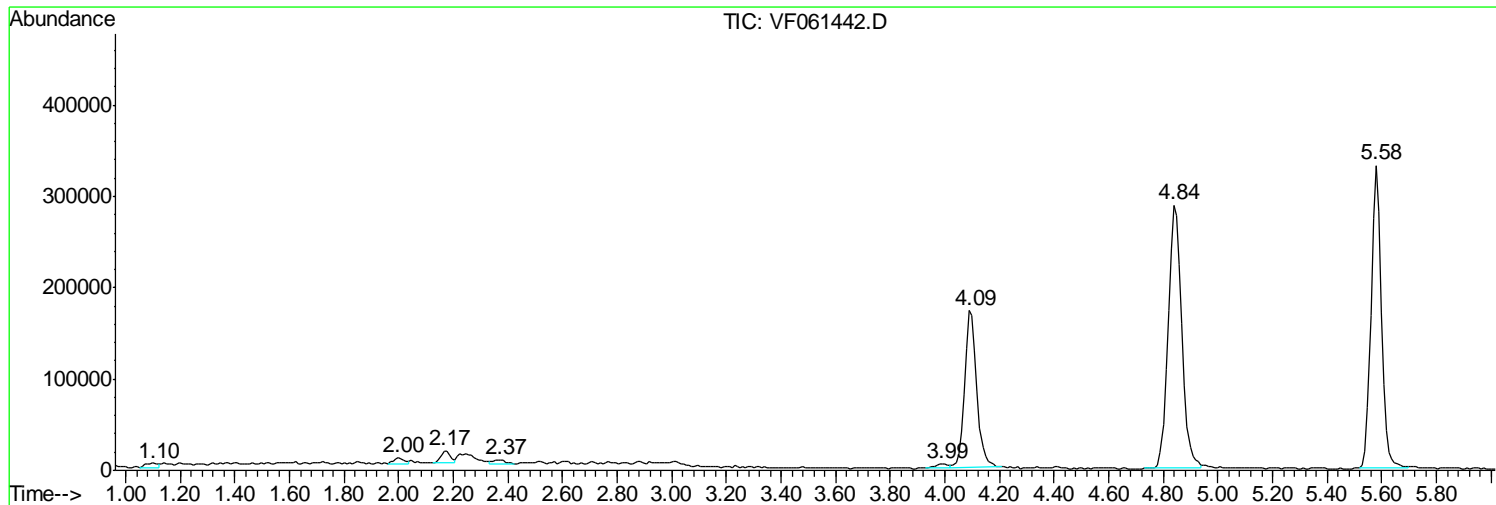
Sum of corrected areas: 6312288

Data Path : Z:\VOASRV\HPCHEM1\MSVOA F\DATA\VF011719\
Data File : VF061442.D
Acq On : 17 Jan 2019 14:00
Operator : VA/AP
Sample : K1157-04
Misc : 5.01µ/5mL/MSVOA-F/SOIL
ALS Vial : 8 Sample Multiplier: 1

Instrument :
MSVOA_F
ClientSampleId :
WC-02-011519

Quant Method : Z:\VOASRV\HPCHEM1\MSVOA_F\METHODS\82F011519S.M
Quant Title : SW846 8260

TIC Library : C:\DATABASE\NIST11.L
TIC Integration Parameters: LSCINT.P



Data Path : Z:\VOASRV\HPCHEM1\MSVOA_F\DATA\VF011719\
Data File : VF061442.D
Acq On : 17 Jan 2019 14:00
Operator : VA/AP
Sample : K1157-04
Misc : 5.01g/5mL/MSVOA-F/SOIL
ALS Vial : 8 Sample Multiplier: 1

Instrument :
MSVOA_F
ClientSampleId :
WC-02-011519

Quant Method : Z:\VOASRV\HPCHEM1\MSVOA_F\METHODS\82F011519S.M
Quant Title : SW846 8260

TIC Library : C:\DATABASE\NIST11.L
TIC Integration Parameters: LSCINT.P

No Library Search Compounds Detected

Data Path : Z:\VOASRV\HPCHEM1\MSVOA_F\DATA\VF011719\
Data File : VF061442.D
Acq On : 17 Jan 2019 14:00
Operator : VA/AP
Sample : K1157-04
Misc : 5.01g/5mL/MSVOA-F/SOIL
ALS Vial : 8 Sample Multiplier: 1

Instrument :
MSVOA_F
ClientSampleId :
WC-02-011519

Quant Method : Z:\VOASRV\HPCHEM1\MSVOA_F\METHODS\82F011519S.M
Quant Title : SW846 8260

TIC Library : C:\DATABASE\NIST11.L
TIC Integration Parameters: LSCINT.P

TIC Top Hit name	RT	EstConc	Units	Response	--Internal Standard--			
					#	RT	Resp	Conc
