

Data Path : Z:\VOASRV\HPCHEM1\MSVOA F\DATA\VF012419\
 Data File : VF061512.D
 Acq On : 24 Jan 2019 20:57
 Operator : VA/AP
 Sample : k1216-01
 Misc : 5.02g/5mL/MSVOA-F/SOIL
 ALS Vial : 22 Sample Multiplier: 1

Instrument :
 MSVOA_F
 ClientSampled :
 MULCH-1

Quant Time: Jan 25 04:11:09 2019
 Quant Method : Z:\VOASRV\HPCHEM1\MSVOA_F\METHODS\82F011519S.M
 Quant Title : SW846 8260
 QLast Update : Wed Jan 16 04:51:59 2019
 Response via : Initial Calibration

Internal Standards	R.T.	QIon	Response	Conc	Units	Dev(Min)
1) Pentafluorobenzene	4.90	168	8688	50.00	ug/l	0.03
34) 1,4-Difluorobenzene	5.63	114	8933	50.00	ug/l	0.03
63) Chlorobenzene-d5	9.80	117	2705	50.00	ug/l	0.03
72) 1,4-Dichlorobenzene-d4	12.56	152	179	50.00	ug/l	0.01

System Monitoring Compounds

33) 1,2-Dichloroethane-d4	4.87	65	2243	20.91	ug/l	0.03
Spiked Amount	50.000		Recovery	= 41.82%		
35) Dibromofluoromethane	4.14	113	2999	42.55	ug/l	0.03
Spiked Amount	50.000		Recovery	= 85.10%		
50) Toluene-d8	7.58	98	7503	38.85	ug/l	0.03
Spiked Amount	50.000		Recovery	= 77.70%		
62) 4-Bromofluorobenzene	11.43	95	660	7.31	ug/l	0.02
Spiked Amount	50.000		Recovery	= 14.62%		

Target Compounds

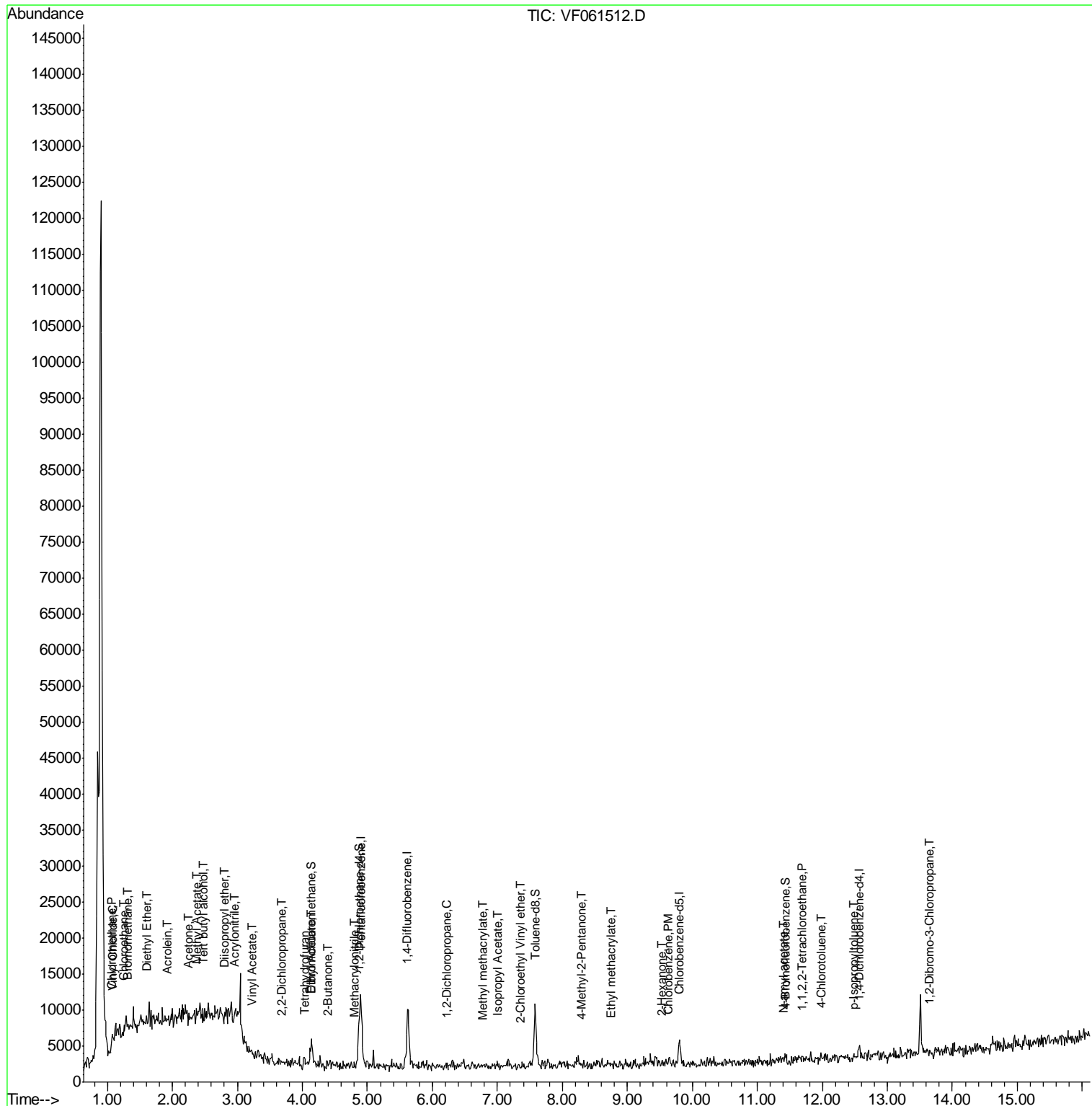
						Qvalue
3) Chloromethane	1.07	50	440	3.515	ug/l #	44
4) Vinyl Chloride	1.09	62	202	1.814	ug/l #	43
5) Bromomethane	1.32	94	295	4.063	ug/l #	2
6) Chloroethane	1.25	64	68	1.378	ug/l #	41
8) Diethyl Ether	1.61	74	72	2.596	ug/l	89
11) Tert butyl alcohol	2.47	59	60	13.215	ug/l #	1
13) Acrolein	1.93	56	638	166.731	ug/l	89
14) Allyl chloride	2.11	41	620	Below Cal	#	80
15) Acrylonitrile	2.95	53	663	57.008	ug/l #	23
16) Acetone	2.26	43	2842	132.072	ug/l #	61
18) Methyl Acetate	2.37	43	1754	41.102	ug/l #	61
22) Diisopropyl ether	2.80	45	357	1.298	ug/l #	1
23) Vinyl Acetate	3.23	43	921	10.711	ug/l #	78
25) 2-Butanone	4.37	43	180	5.030	ug/l #	57
26) 2,2-Dichloropropane	3.67	77	116	1.094	ug/l #	61
29) Tetrahydrofuran	4.05	42	67	4.348	ug/l #	38
37) Ethyl Acetate	4.13	43	200	4.831	ug/l #	5
41) Methacrylonitrile	4.79	41	77	3.495	ug/l #	29
43) Isopropyl Acetate	7.00	43	78	1.501	ug/l #	51
45) 1,2-Dichloropropane	6.23	63	94	1.554	ug/l #	44
48) Methyl methacrylate	6.77	41	149	4.270	ug/l #	19
51) 4-Methyl-2-Pentanone	8.30	43	208	5.445	ug/l #	39
56) Ethyl methacrylate	8.73	69	72	1.436	ug/l #	55
58) 2-Chloroethyl Vinyl ether	7.35	63	60	37.673	ug/l #	47
59) 2-Hexanone	9.53	43	125	4.693	ug/l #	26
65) Chlorobenzene	9.62	112	85	1.545	ug/l #	43
74) N-amyl acetate	11.40	43	460	133.623	ug/l #	47
75) 1,1,2,2-Tetrachloroethane	11.69	83	59	22.749	ug/l #	24
82) 4-Chlorotoluene	11.97	91	65	6.377	ug/l #	43
86) p-Isopropyltoluene	12.48	119	229	16.893	ug/l #	50
92) 1,2-Dibromo-3-Chloropropan	13.64	75	66	143.474	ug/l #	1

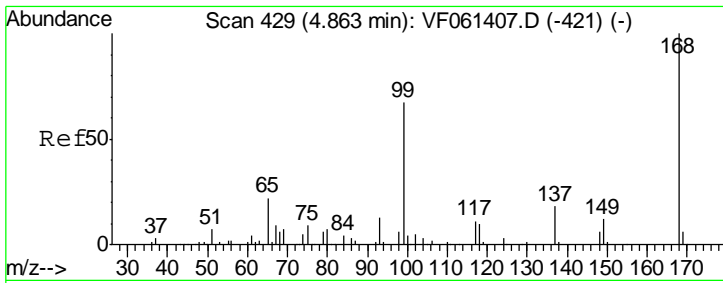
(#) = qualifier out of range (m) = manual integration (+) = signals summed

Data Path : Z:\VOASRV\HPCHEM1\MSVOA F\DATA\VF012419\
 Data File : VF061512.D
 Acq On : 24 Jan 2019 20:57
 Operator : VA/AP
 Sample : k1216-01
 Misc : 5.02µ/5mL/MSVOA-F/SOIL
 ALS Vial : 22 Sample Multiplier: 1

Instrument :
 MSVOA_F
 Client Sampled :
 MULCH-1

Quant Time: Jan 25 04:11:09 2019
 Quant Method : Z:\VOASRV\HPCHEM1\MSVOA_F\METHODS\82F011519S.M
 Quant Title : SW846 8260
 QLast Update : Wed Jan 16 04:51:59 2019
 Response via : Initial Calibration

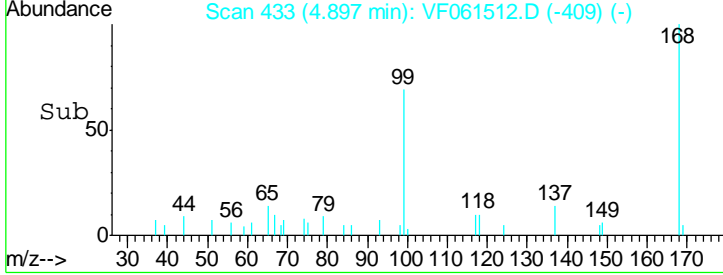
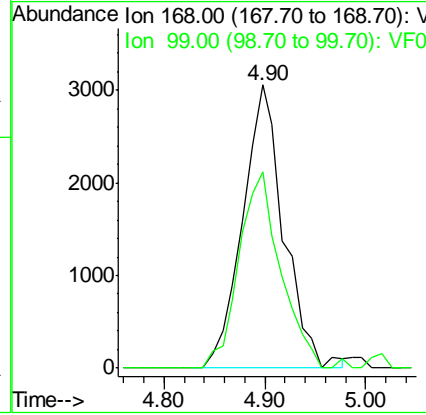
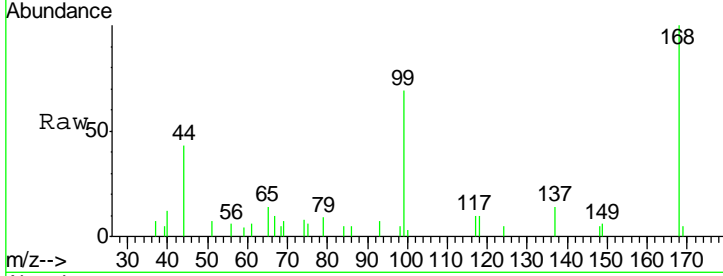




#1
 Pentafluorobenzene
 Concen: 50.000 ug/l
 RT: 4.90 min Scan# 433
 Delta R.T. 0.03 min
 Lab File: VF061512.D
 Acq: 24 Jan 2019 20:57

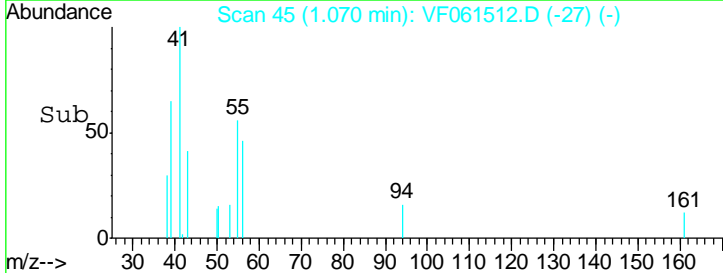
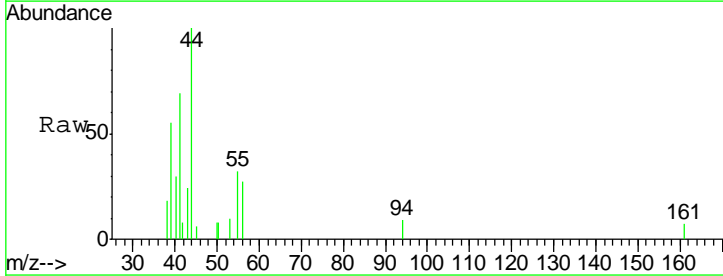
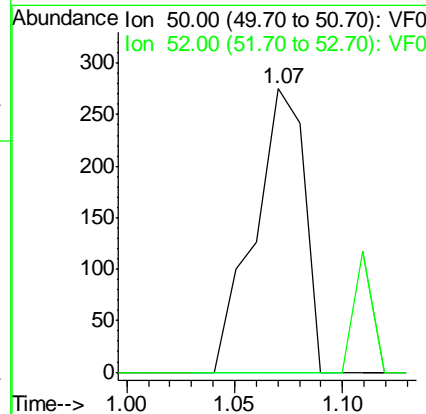
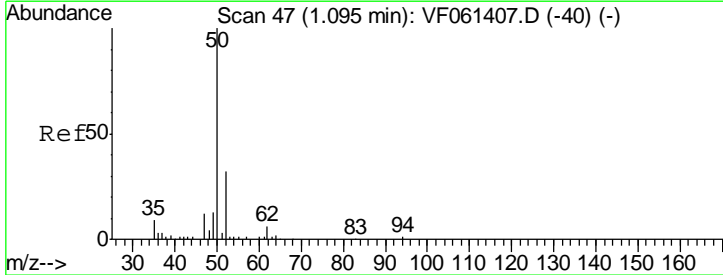
Instrument :
 MSVOA_F
 ClientSampled :
 MULCH-1

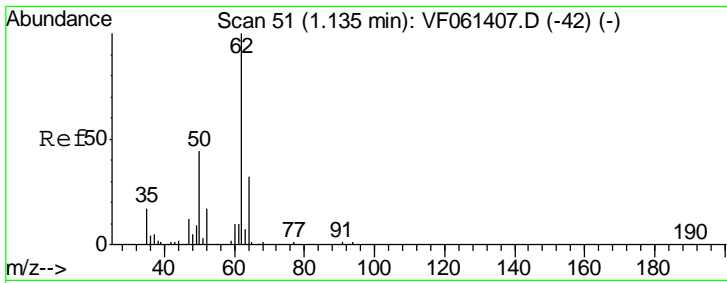
Tgt Ion: 168 Resp: 8688
 Ion Ratio Lower Upper
 168 100
 99 69.1 53.5 80.3



#3
 Chloromethane
 Concen: 3.515 ug/l
 RT: 1.07 min Scan# 45
 Delta R.T. -0.03 min
 Lab File: VF061512.D
 Acq: 24 Jan 2019 20:57

Tgt Ion: 50 Resp: 440
 Ion Ratio Lower Upper
 50 100
 52 0.0 24.6 36.8#

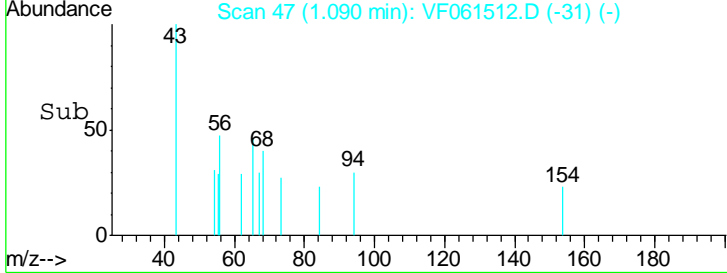
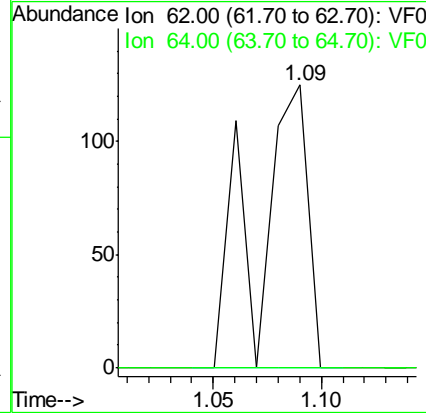
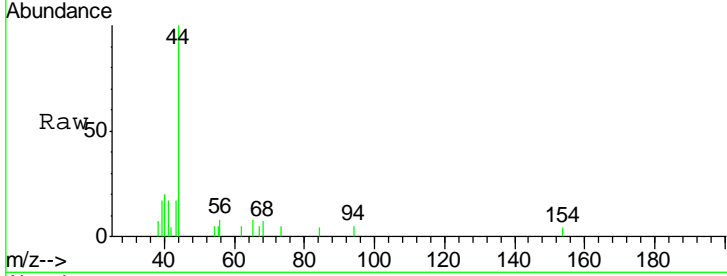




#4
 Vinyl Chloride
 Concen: 1.814 ug/l
 RT: 1.09 min Scan# 47
 Delta R.T. -0.04 min
 Lab File: VF061512.D
 Acq: 24 Jan 2019 20:57

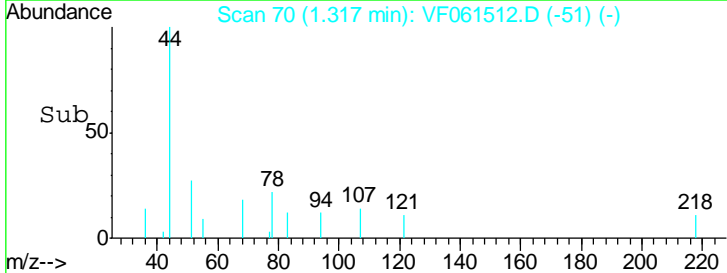
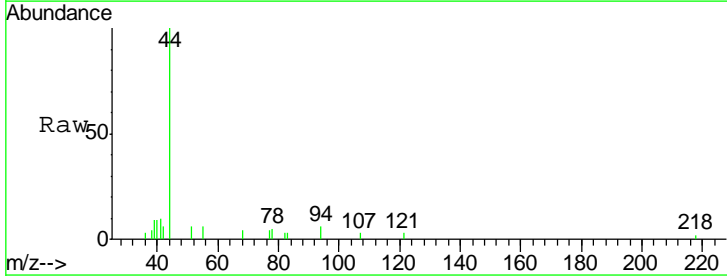
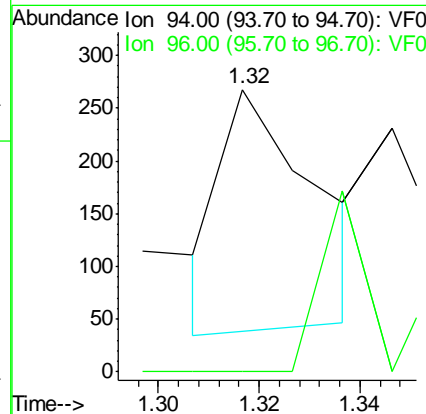
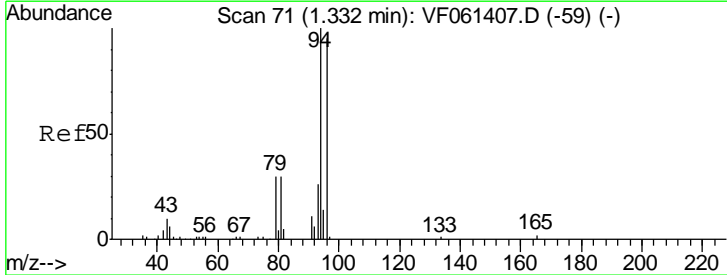
Instrument :
 MSVOA_F
ClientSampled :
 MULCH-1

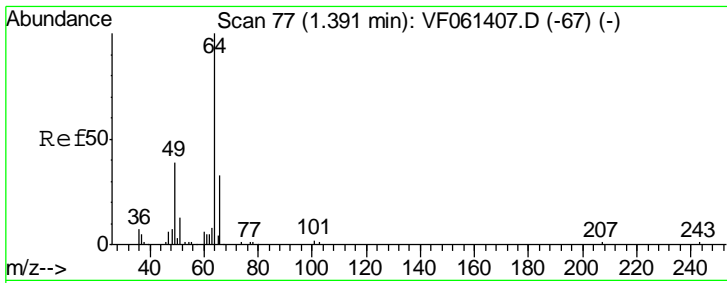
Tgt Ion	Resp	Lower	Upper
62	100		
64	0.0	25.6	38.4#



#5
 Bromomethane
 Concen: 4.063 ug/l
 RT: 1.32 min Scan# 70
 Delta R.T. -0.02 min
 Lab File: VF061512.D
 Acq: 24 Jan 2019 20:57

Tgt Ion	Resp	Lower	Upper
94	100		
96	0.0	76.0	114.0#

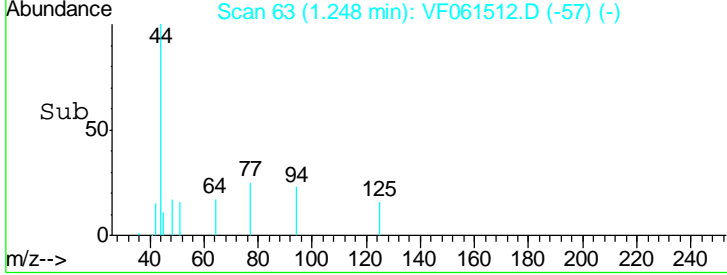
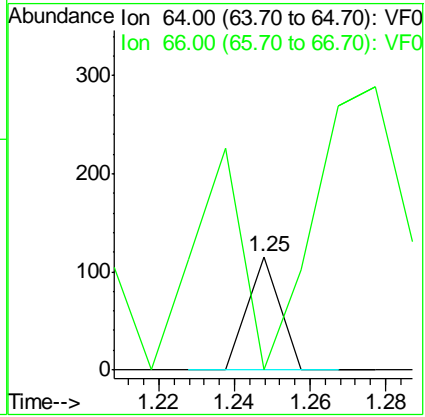
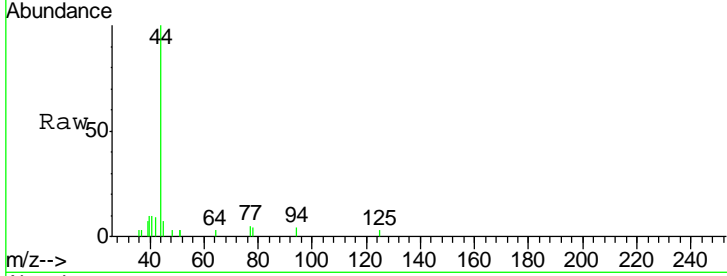




#6
 Chloroethane
 Concen: 1.378 ug/l
 RT: 1.25 min Scan# 63
 Delta R.T. -0.14 min
 Lab File: VF061512.D
 Acq: 24 Jan 2019 20:57

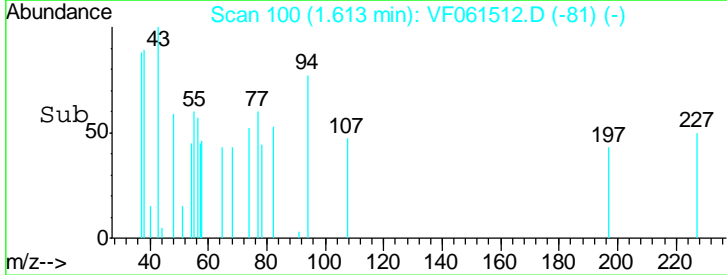
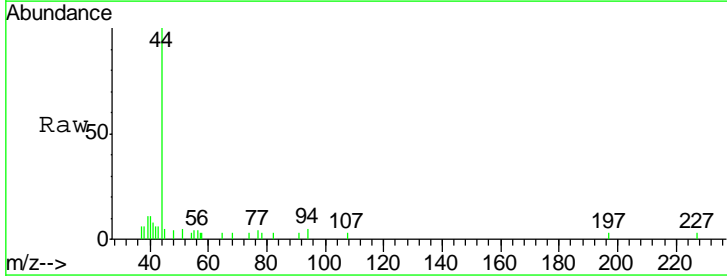
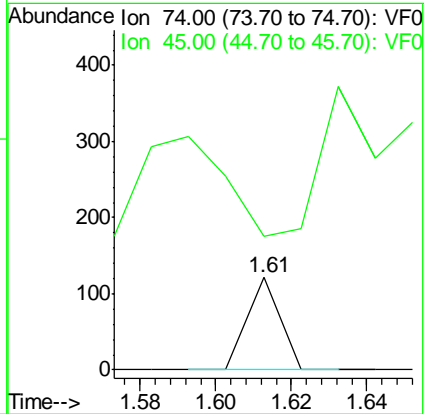
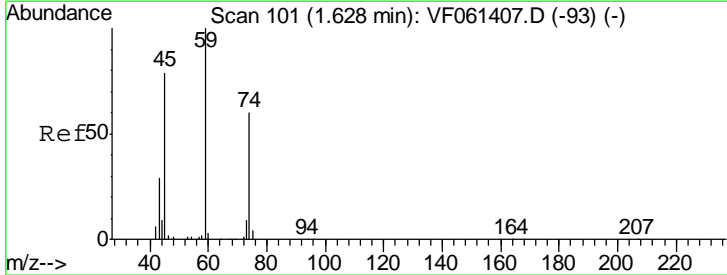
Instrument :
 MSVOA_F
ClientSampled :
 MULCH-1

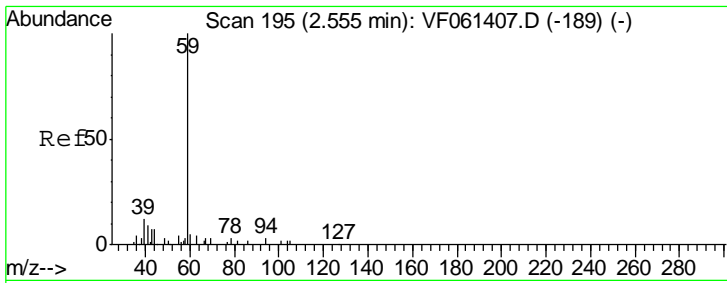
Tgt Ion	Resp	Lower	Upper
64	100		
66	0.0	26.6	40.0#



#8
 Diethyl Ether
 Concen: 2.596 ug/l
 RT: 1.61 min Scan# 100
 Delta R.T. -0.02 min
 Lab File: VF061512.D
 Acq: 24 Jan 2019 20:57

Tgt Ion	Resp	Lower	Upper
74	100		
45	144.6	65.8	197.5

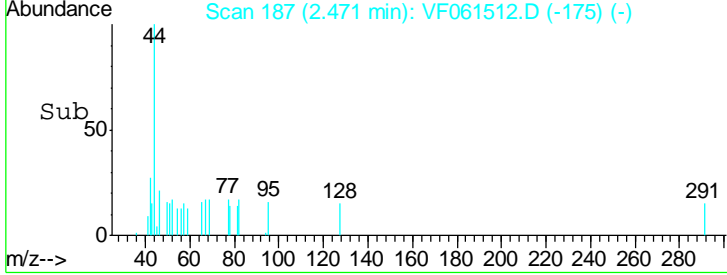
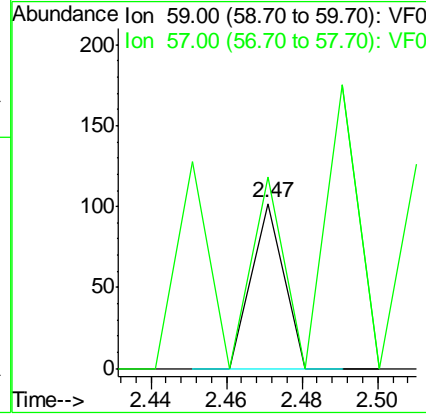
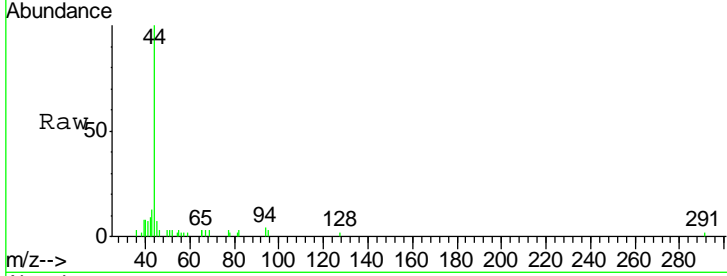




#11
 Tert butyl alcohol
 Concen: 13.215 ug/l
 RT: 2.47 min Scan# 187
 Delta R.T. -0.08 min
 Lab File: VF061512.D
 Acq: 24 Jan 2019 20:57

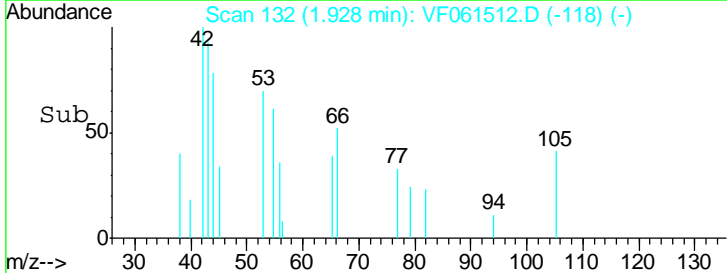
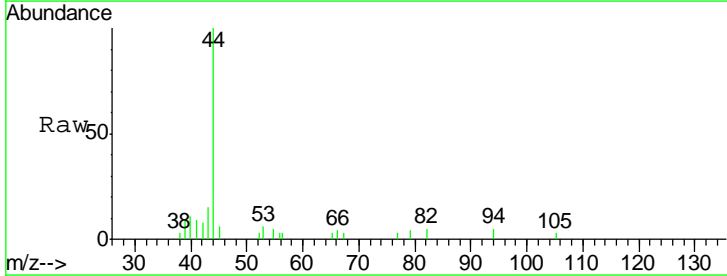
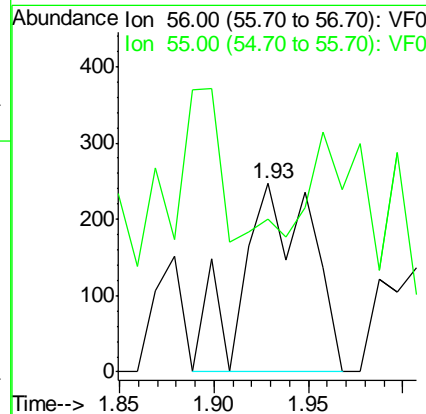
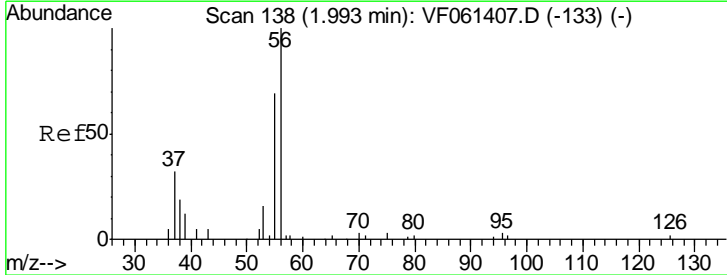
Instrument :
 MSVOA_F
ClientSampled :
 MULCH-1

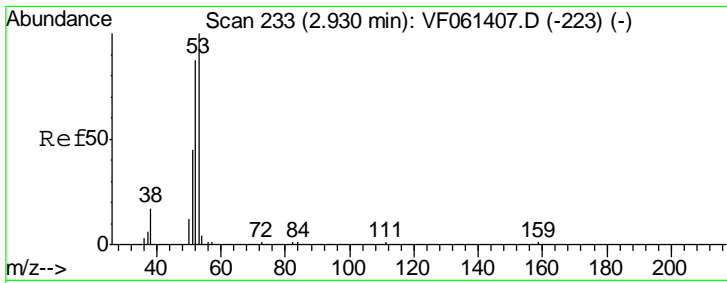
Tgt Ion	Resp	Lower	Upper
59	100		
57	115.7	11.9	17.9#



#13
 Acrolein
 Concen: 166.731 ug/l
 RT: 1.93 min Scan# 132
 Delta R.T. -0.06 min
 Lab File: VF061512.D
 Acq: 24 Jan 2019 20:57

Tgt Ion	Resp	Lower	Upper
56	100		
55	81.4	57.5	86.3

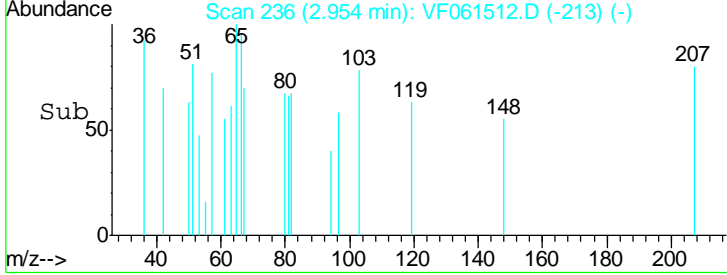
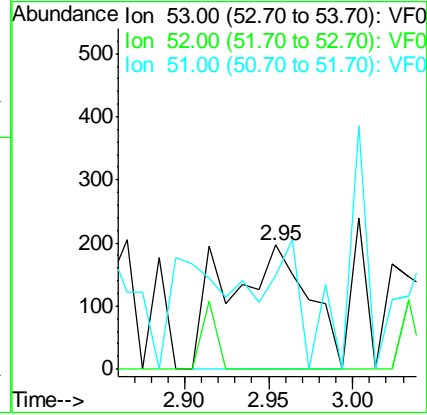
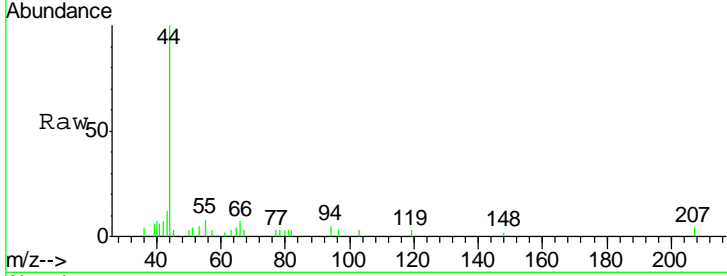




#15
 Acrylonitrile
 Concen: 57.008 ug/l
 RT: 2.95 min Scan# 236
 Delta R.T. 0.02 min
 Lab File: VF061512.D
 Acq: 24 Jan 2019 20:57

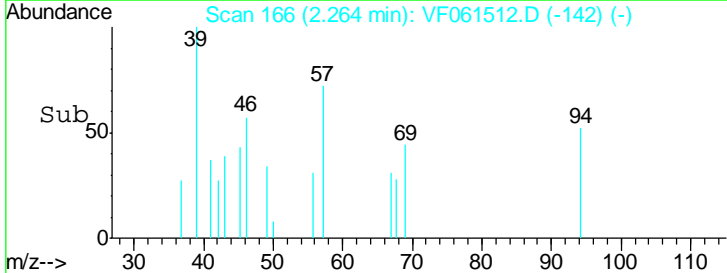
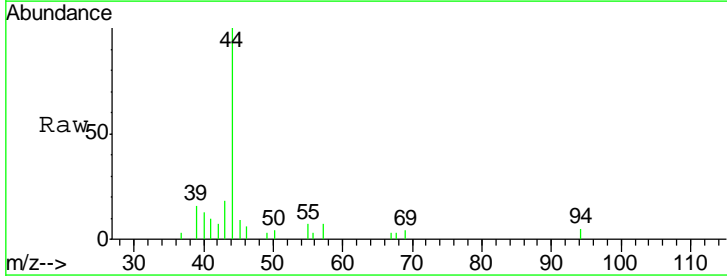
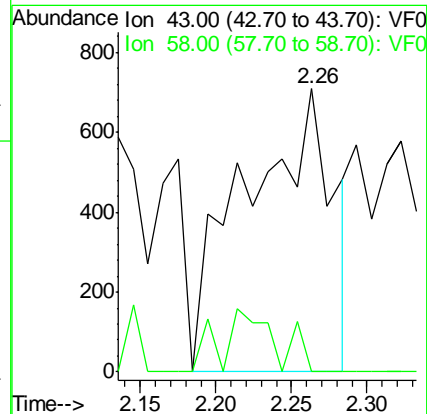
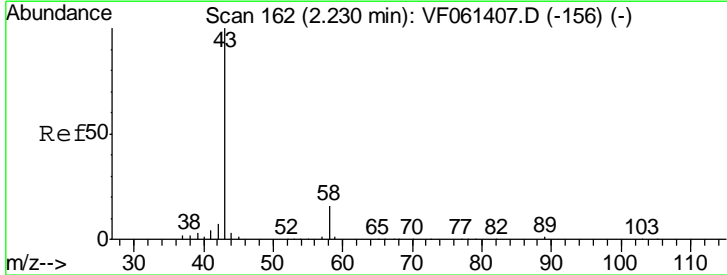
Instrument :
 MSVOA_F
ClientSampled :
 MULCH-1

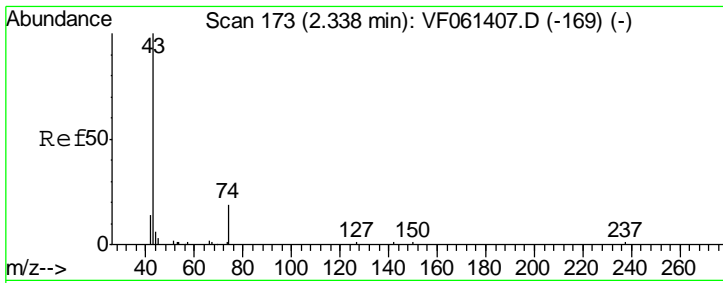
Tgt Ion	Resp	Lower	Upper
53	100		
52	0.0	69.6	104.4#
51	75.6	36.8	55.2#



#16
 Acetone
 Concen: 132.072 ug/l
 RT: 2.26 min Scan# 166
 Delta R.T. 0.03 min
 Lab File: VF061512.D
 Acq: 24 Jan 2019 20:57

Tgt Ion	Resp	Lower	Upper
43	100		
58	0.0	13.3	19.9#

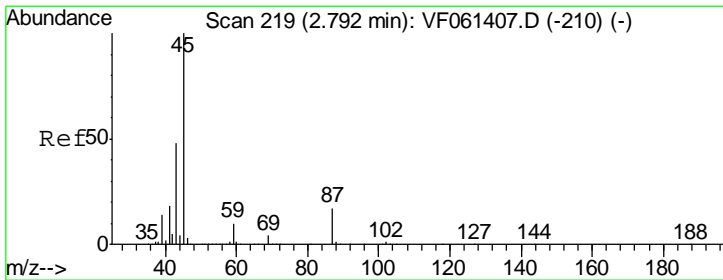
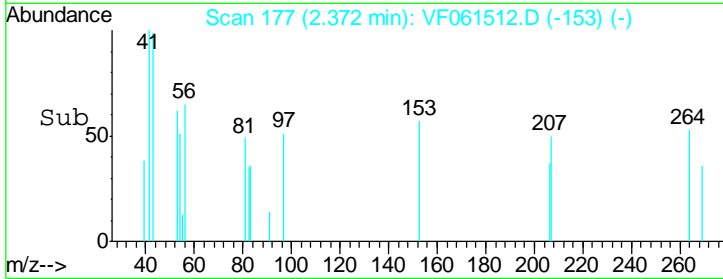
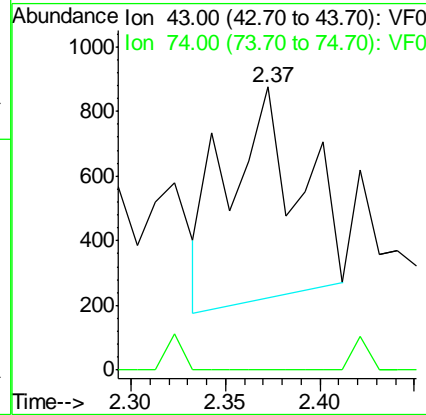
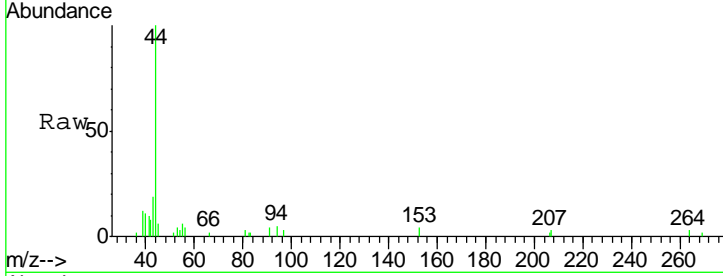




#18
 Methyl Acetate
 Concen: 41.102 ug/l
 RT: 2.37 min Scan# 177
 Delta R.T. 0.03 min
 Lab File: VF061512.D
 Acq: 24 Jan 2019 20:57

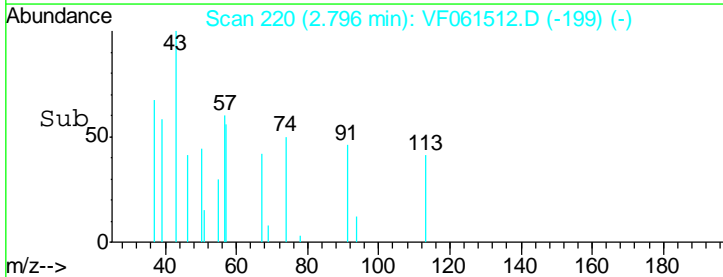
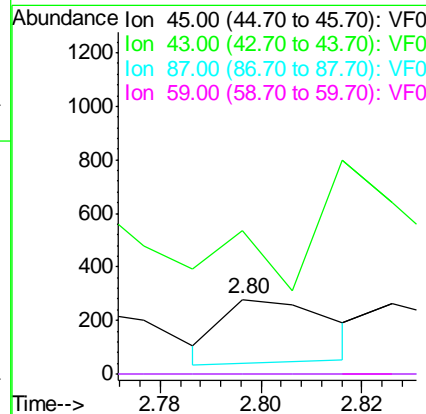
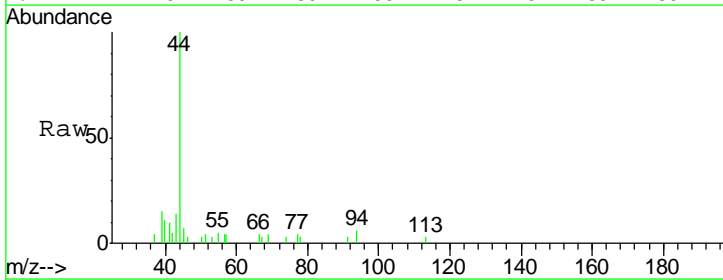
Instrument :
 MSVOA_F
 ClientSampled :
 MULCH-1

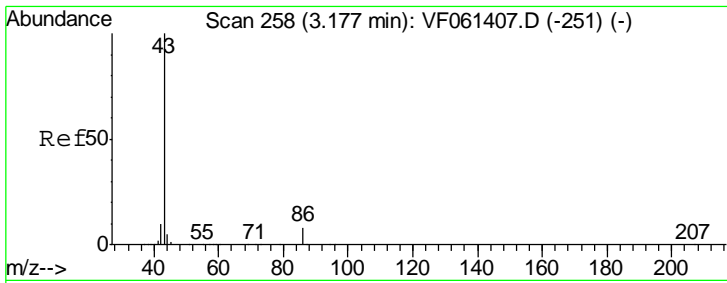
Tgt Ion	Resp	Lower	Upper
43	1754		
74	0.0	13.4	20.0#



#22
 Diisopropyl ether
 Concen: 1.298 ug/l
 RT: 2.80 min Scan# 220
 Delta R.T. 0.00 min
 Lab File: VF061512.D
 Acq: 24 Jan 2019 20:57

Tgt Ion	Resp	Lower	Upper
45	357		
43	192.1	39.0	58.6#
87	0.0	13.9	20.9#
59	0.0	7.8	11.6#

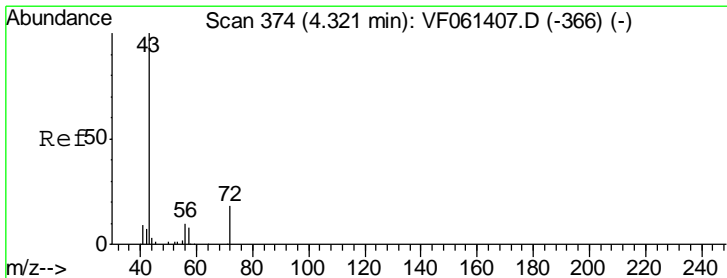
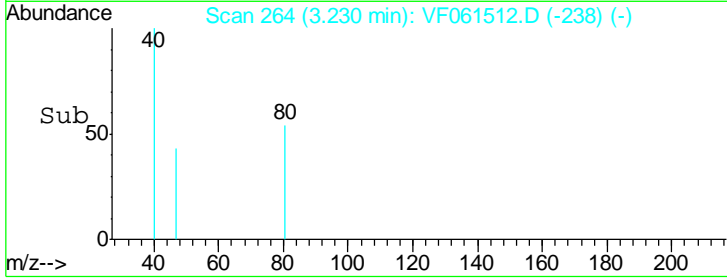
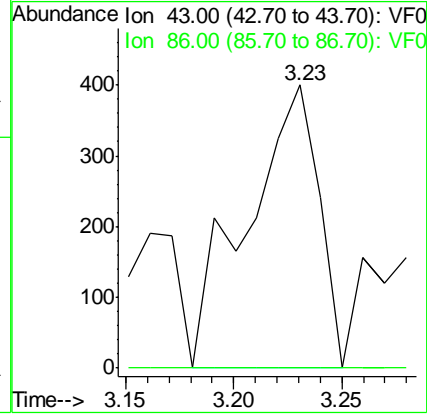
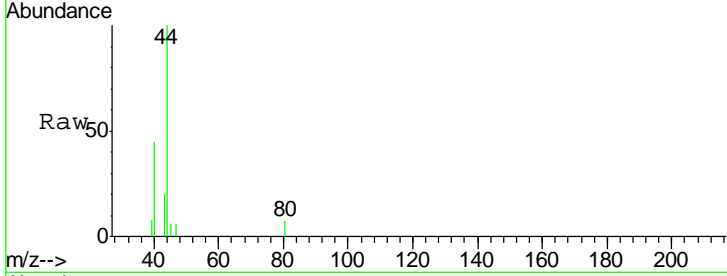




#23
 Vinyl Acetate
 Concen: 10.711 ug/l
 RT: 3.23 min Scan# 264
 Delta R.T. 0.05 min
 Lab File: VF061512.D
 Acq: 24 Jan 2019 20:57

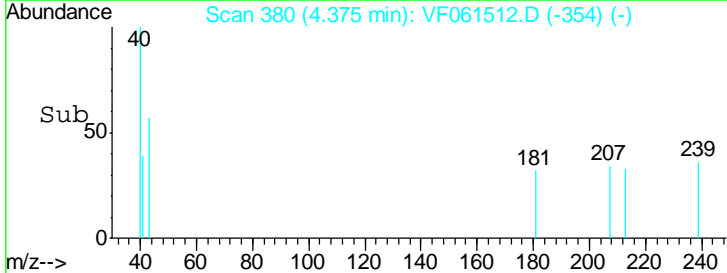
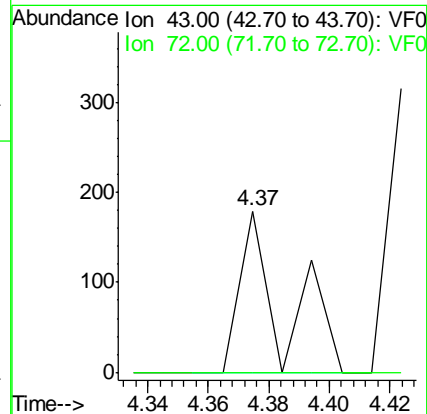
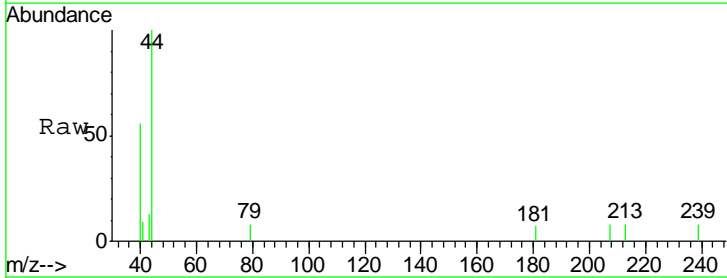
Instrument :
 MSVOA_F
 ClientSampled :
 MULCH-1

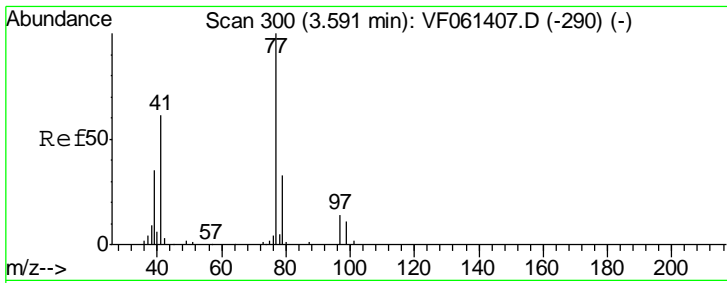
Tgt Ion: 43 Resp: 921
 Ion Ratio Lower Upper
 43 100
 86 0.0 6.2 9.4#



#25
 2-Butanone
 Concen: 5.030 ug/l
 RT: 4.37 min Scan# 380
 Delta R.T. 0.05 min
 Lab File: VF061512.D
 Acq: 24 Jan 2019 20:57

Tgt Ion: 43 Resp: 180
 Ion Ratio Lower Upper
 43 100
 72 0.0 15.8 23.6#

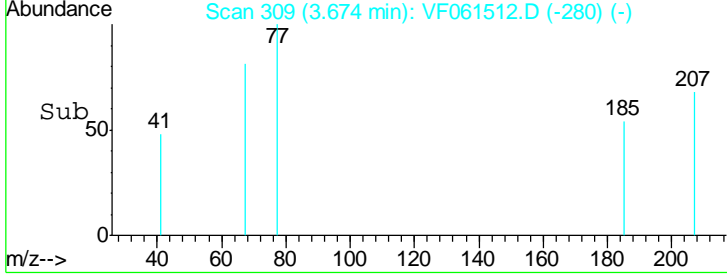
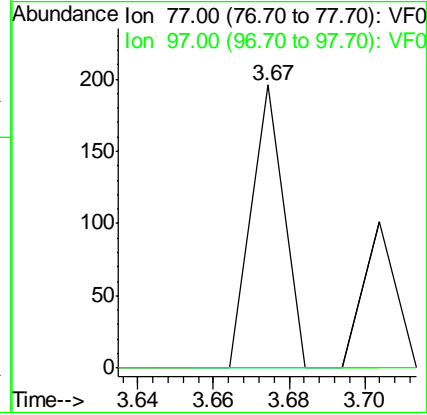
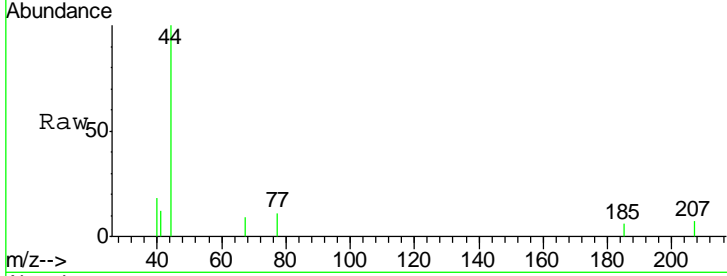




#26
 2,2-Dichloropropane
 Concen: 1.094 ug/l
 RT: 3.67 min Scan# 309
 Delta R.T. 0.08 min
 Lab File: VF061512.D
 Acq: 24 Jan 2019 20:57

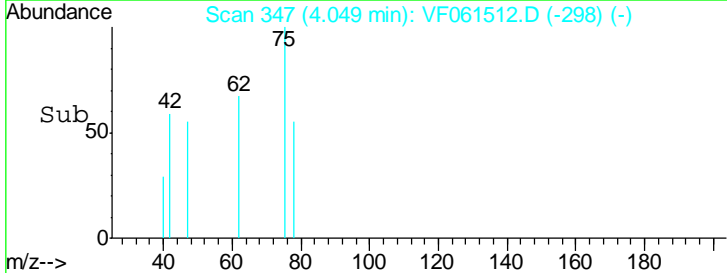
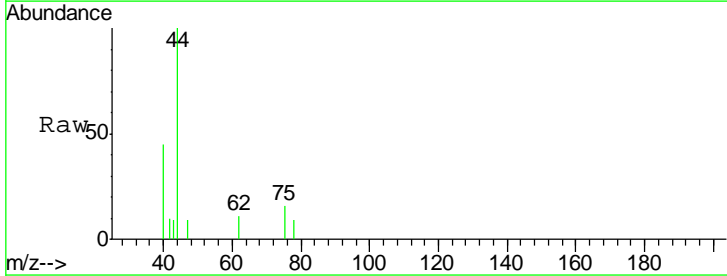
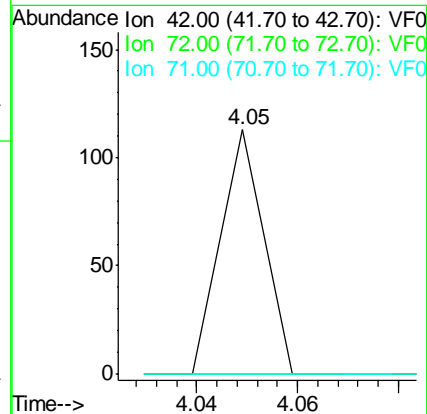
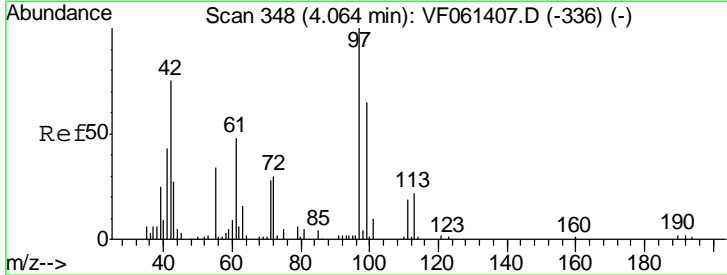
Instrument :
 MSVOA_F
ClientSampled :
 MULCH-1

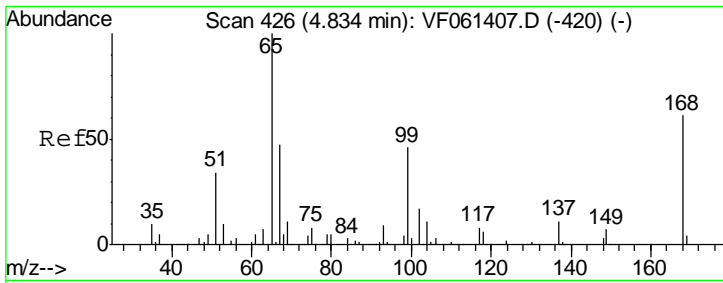
Tgt Ion	Resp	Lower	Upper
77	116		
97	0.0	8.5	25.5#



#29
 Tetrahydrofuran
 Concen: 4.348 ug/l
 RT: 4.05 min Scan# 347
 Delta R.T. -0.02 min
 Lab File: VF061512.D
 Acq: 24 Jan 2019 20:57

Tgt Ion	Resp	Lower	Upper
42	67		
72	0.0	28.9	43.3#
71	0.0	29.6	44.4#

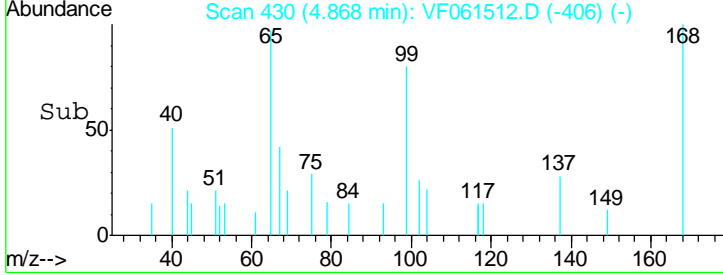
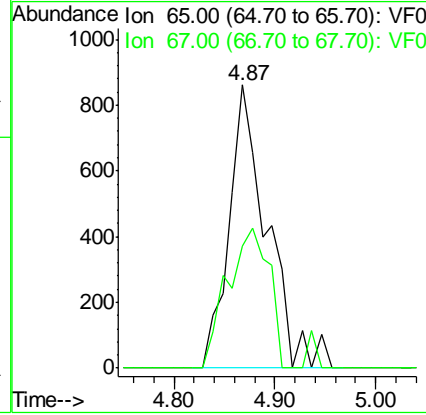
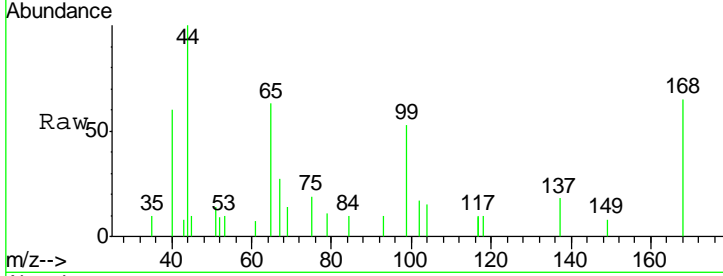




#33
 1,2-Dichloroethane-d4
 Concen: 20.911 ug/l
 RT: 4.87 min Scan# 430
 Delta R.T. 0.03 min
 Lab File: VF061512.D
 Acq: 24 Jan 2019 20:57

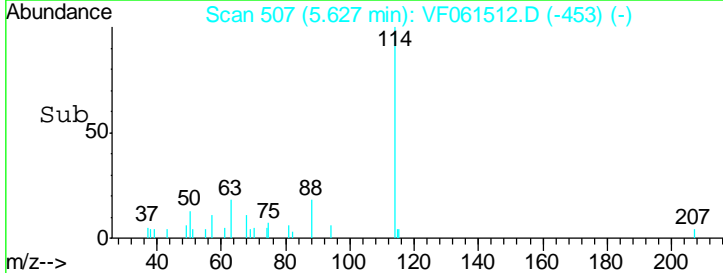
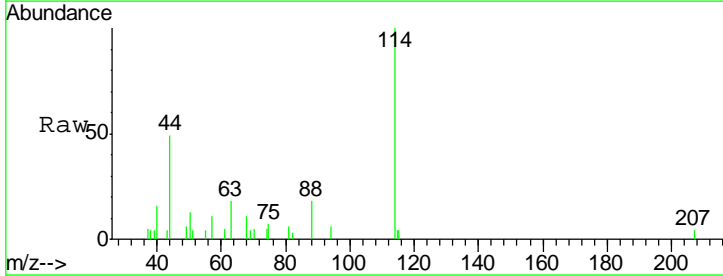
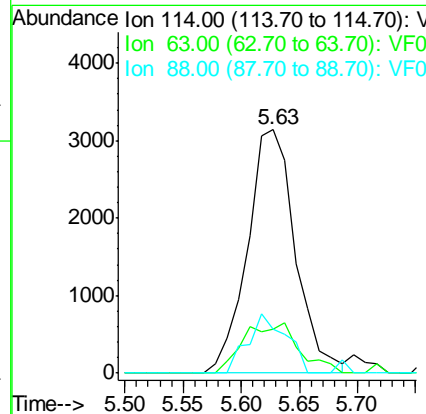
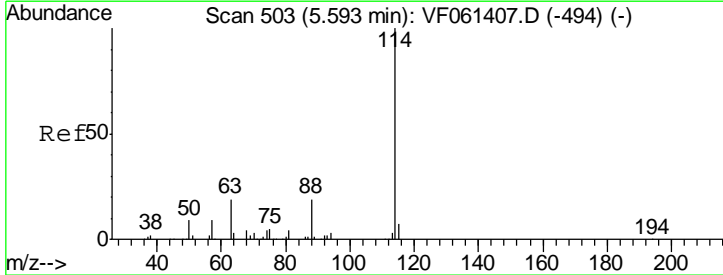
Instrument :
 MSVOA_F
ClientSampled :
 MULCH-1

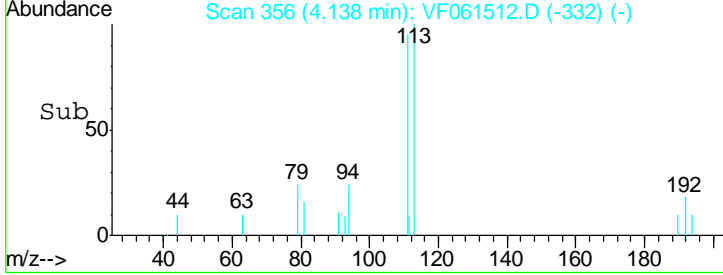
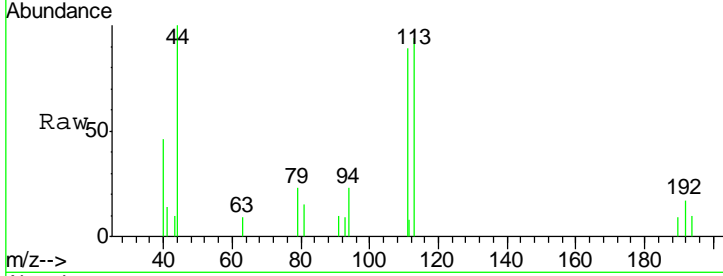
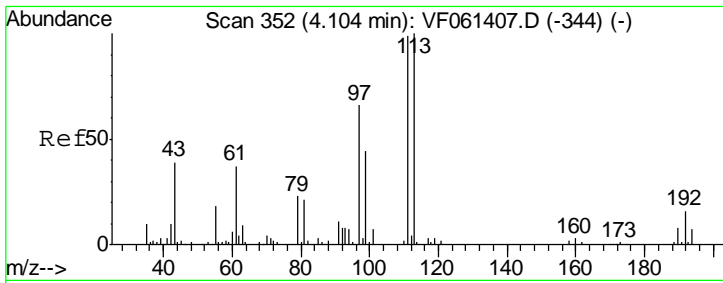
Tgt Ion	Resp	Lower	Upper
65	100		
67	43.2	0.0	99.8



#34
 1,4-Difluorobenzene
 Concen: 50.000 ug/l
 RT: 5.63 min Scan# 507
 Delta R.T. 0.03 min
 Lab File: VF061512.D
 Acq: 24 Jan 2019 20:57

Tgt Ion	Resp	Lower	Upper
114	100		
63	18.2	0.0	39.0
88	17.9	0.0	37.4

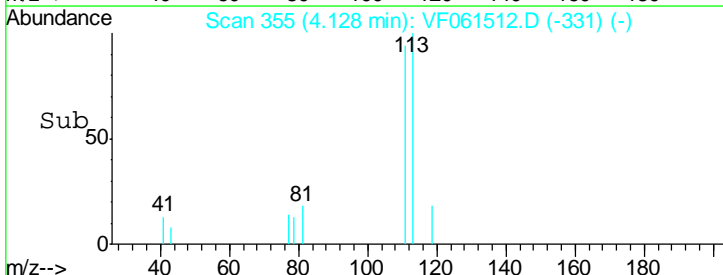
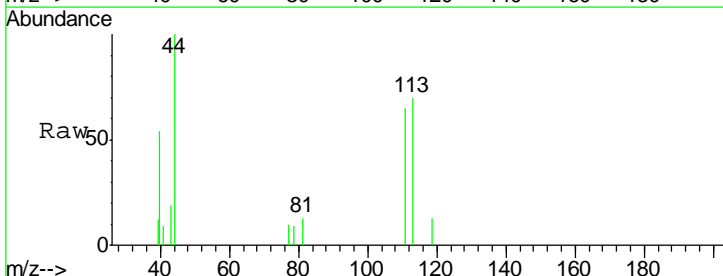
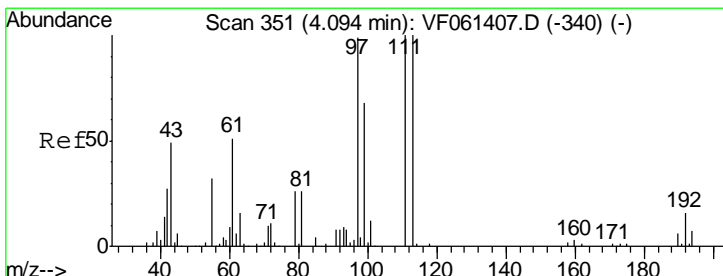
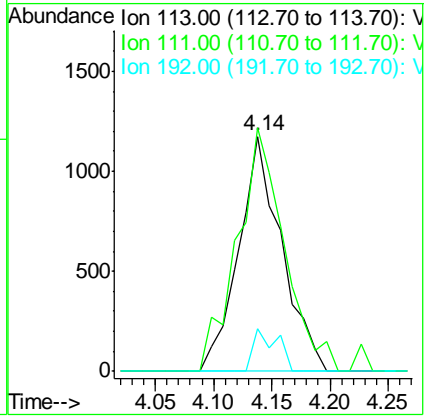




#35
 Dibromofluoromethane
 Concen: 42.546 ug/l
 RT: 4.14 min Scan# 356
 Delta R.T. 0.03 min
 Lab File: VF061512.D
 Acq: 24 Jan 2019 20:57

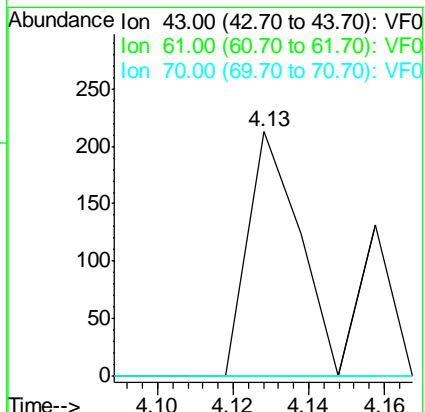
Instrument :
 MSVOA_F
 ClientSampled :
 MULCH-1

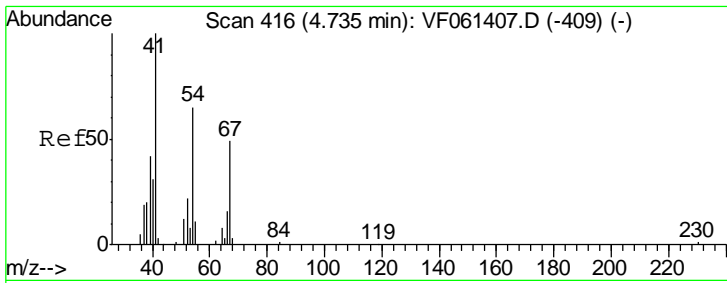
Tgt Ion	Resp	Lower	Upper
113	2999		
111	103.6	79.4	119.0
192	18.4	12.4	18.6



#37
 Ethyl Acetate
 Concen: 4.831 ug/l
 RT: 4.13 min Scan# 355
 Delta R.T. 0.03 min
 Lab File: VF061512.D
 Acq: 24 Jan 2019 20:57

Tgt Ion	Resp	Lower	Upper
43	200		
43	100		
61	0.0	81.7	122.5#
70	0.0	6.2	9.2#

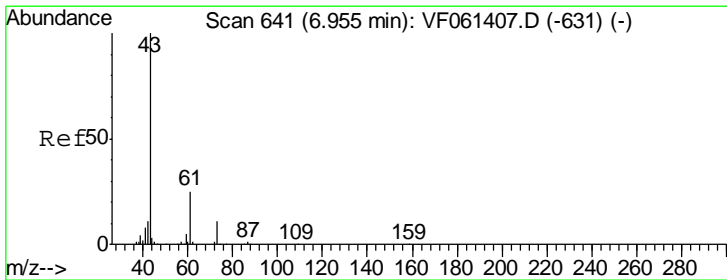
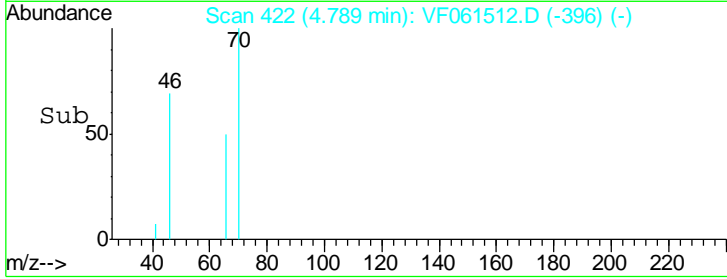
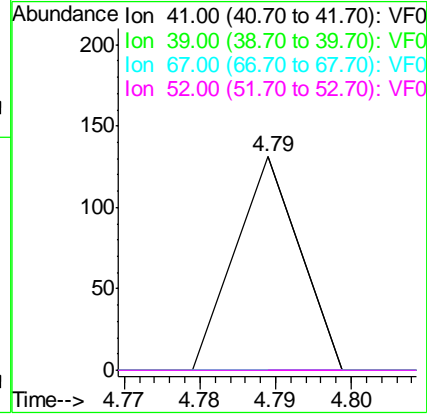
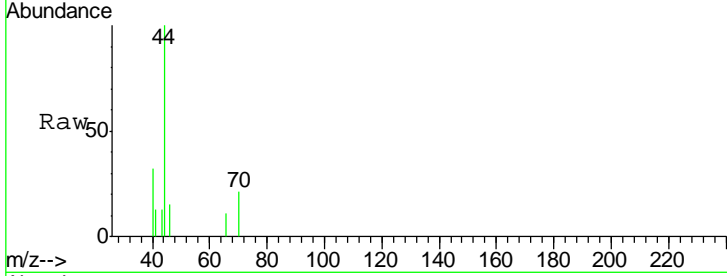




#41
 Methacrylonitrile
 Concen: 3.495 ug/l
 RT: 4.79 min Scan# 422
 Delta R.T. 0.05 min
 Lab File: VF061512.D
 Acq: 24 Jan 2019 20:57

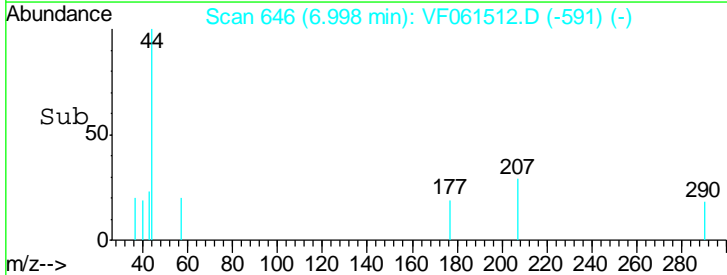
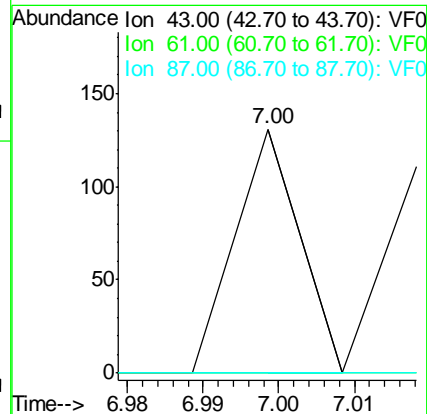
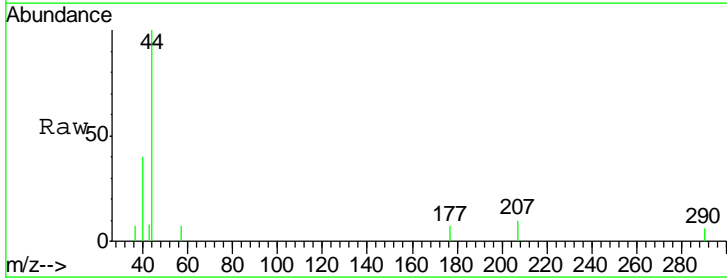
Instrument :
 MSVOA_F
 ClientSampled :
 MULCH-1

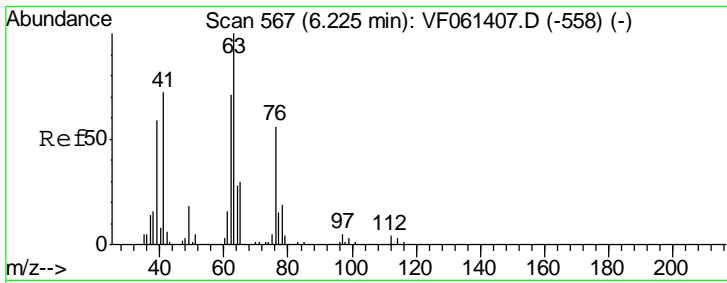
Tgt Ion	Resp	Lower	Upper
41	100		
39	0.0	43.1	64.7#
67	0.0	38.8	58.2#
52	0.0	33.2	49.8#



#43
 Isopropyl Acetate
 Concen: 1.501 ug/l
 RT: 7.00 min Scan# 646
 Delta R.T. 0.04 min
 Lab File: VF061512.D
 Acq: 24 Jan 2019 20:57

Tgt Ion	Resp	Lower	Upper
43	100		
61	0.0	20.3	30.5#
87	0.0	0.5	0.7#

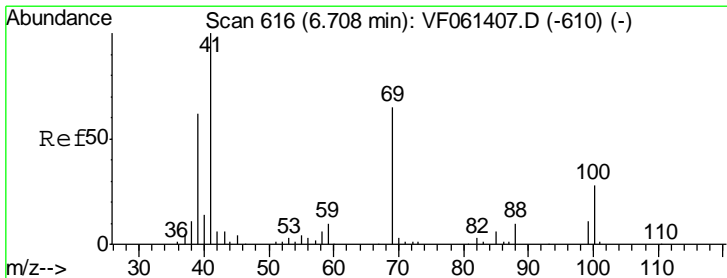
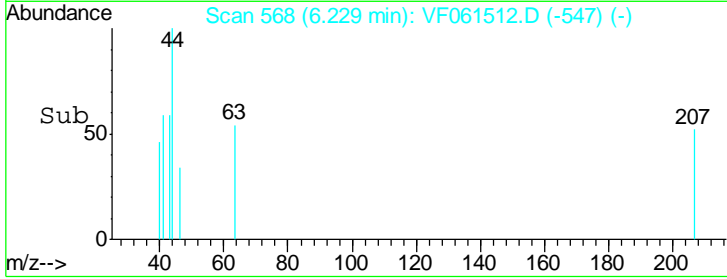
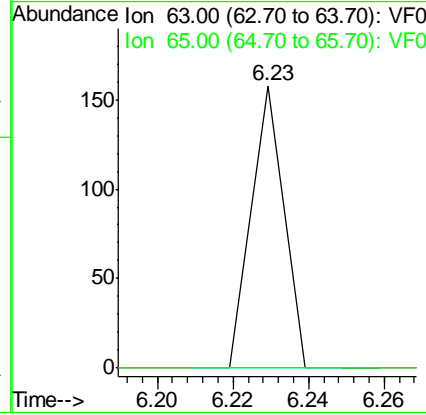
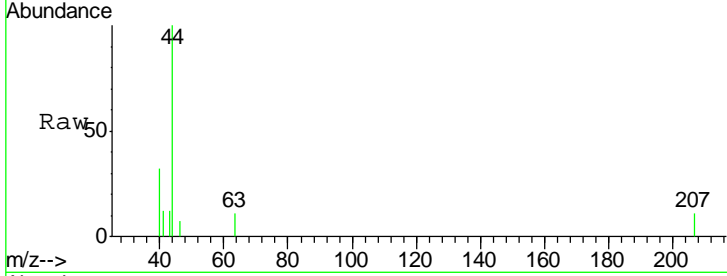




#45
 1,2-Dichloropropane
 Concen: 1.554 ug/l
 RT: 6.23 min Scan# 568
 Delta R.T. 0.00 min
 Lab File: VF061512.D
 Acq: 24 Jan 2019 20:57

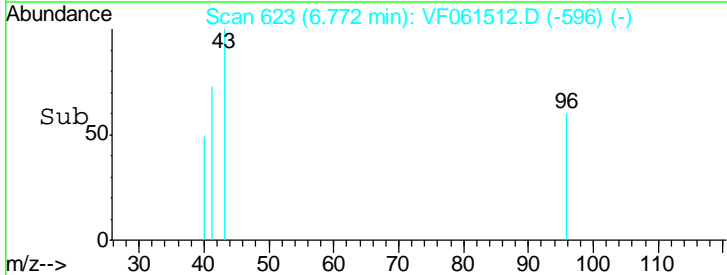
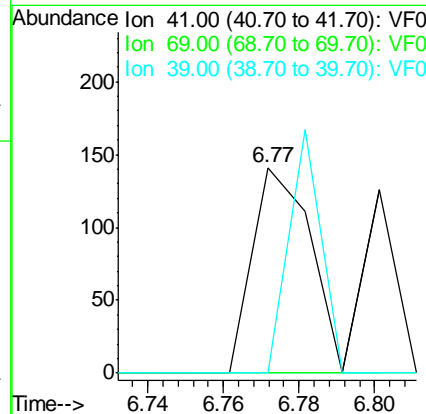
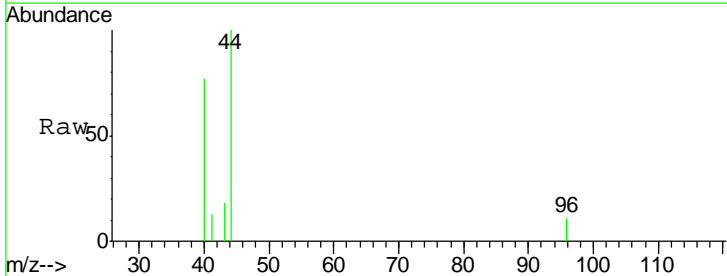
Instrument :
 MSVOA_F
 ClientSampled :
 MULCH-1

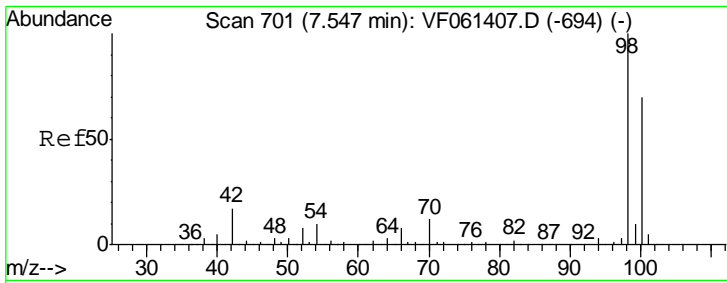
Tgt Ion: 63 Resp: 94
 Ion Ratio Lower Upper
 63 100
 65 0.0 24.4 36.6#



#48
 Methyl methacrylate
 Concen: 4.270 ug/l
 RT: 6.77 min Scan# 623
 Delta R.T. 0.06 min
 Lab File: VF061512.D
 Acq: 24 Jan 2019 20:57

Tgt Ion: 41 Resp: 149
 Ion Ratio Lower Upper
 41 100
 69 0.0 51.7 77.5#
 39 0.0 49.2 73.8#

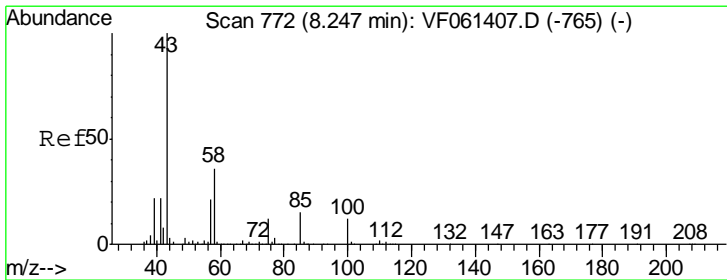
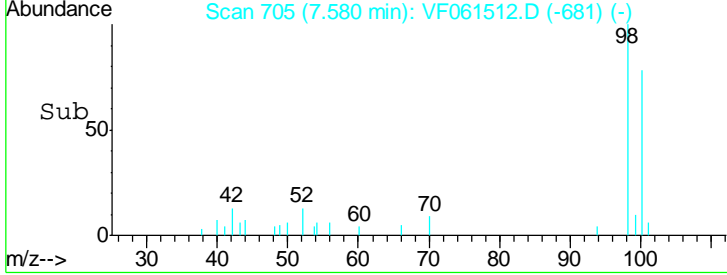
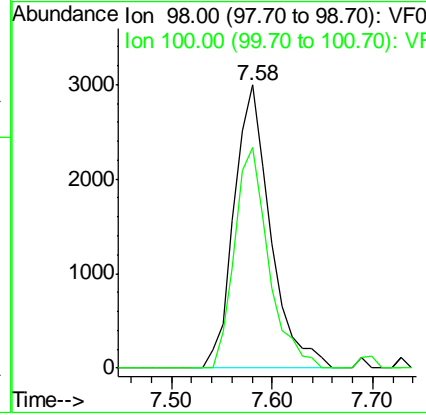
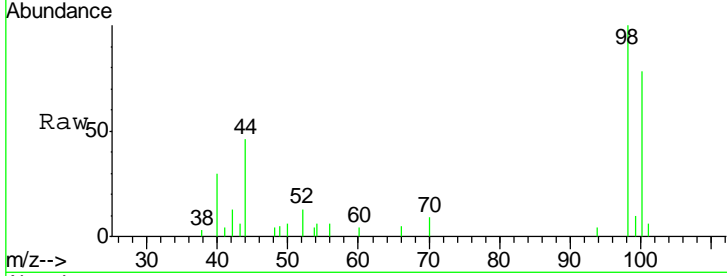




#50
 Toluene-d8
 Concen: 38.850 ug/l
 RT: 7.58 min Scan# 705
 Delta R.T. 0.03 min
 Lab File: VF061512.D
 Acq: 24 Jan 2019 20:57

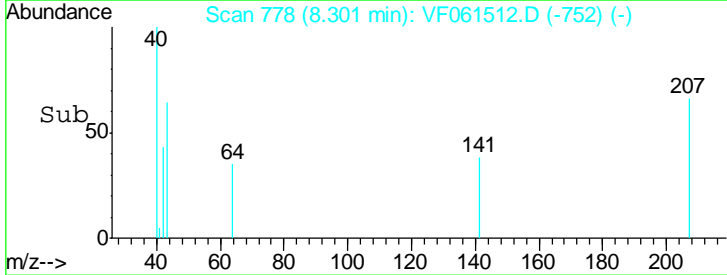
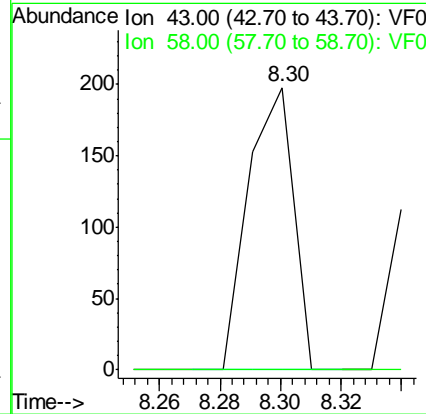
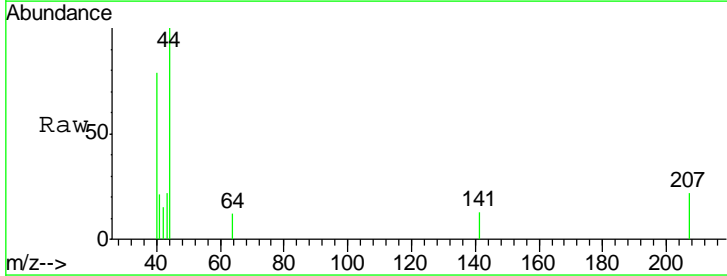
Instrument :
 MSVOA_F
ClientSampled :
 MULCH-1

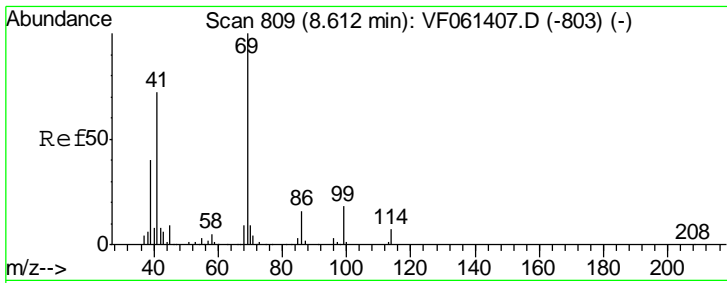
Tgt Ion: 98 Resp: 7503
 Ion Ratio Lower Upper
 98 100
 100 78.0 55.6 83.4



#51
 4-Methyl-2-Pentanone
 Concen: 5.445 ug/l
 RT: 8.30 min Scan# 778
 Delta R.T. 0.05 min
 Lab File: VF061512.D
 Acq: 24 Jan 2019 20:57

Tgt Ion: 43 Resp: 208
 Ion Ratio Lower Upper
 43 100
 58 0.0 28.8 43.2#

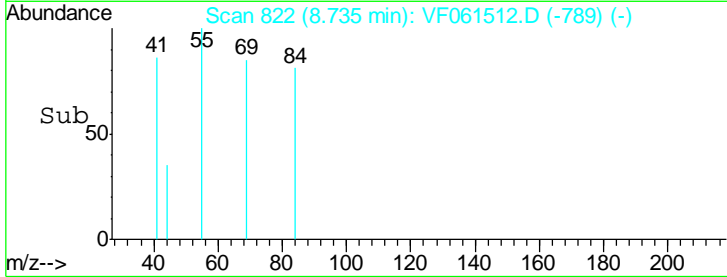
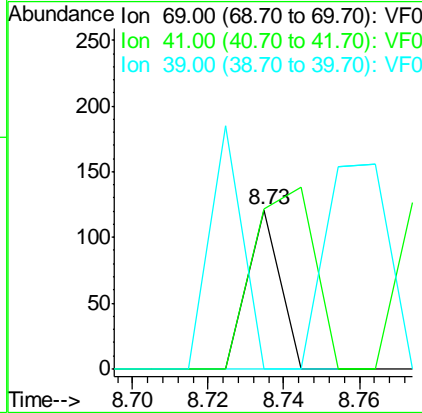
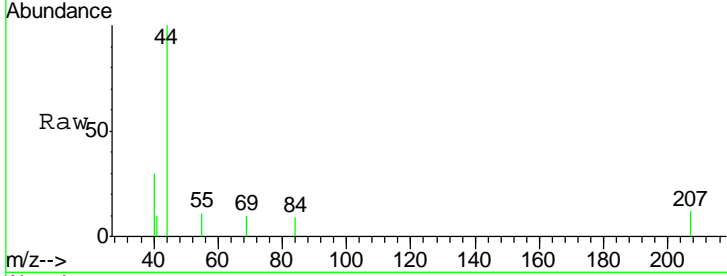




#56
 Ethyl methacrylate
 Concen: 1.436 ug/l
 RT: 8.73 min Scan# 822
 Delta R.T. 0.12 min
 Lab File: VF061512.D
 Acq: 24 Jan 2019 20:57

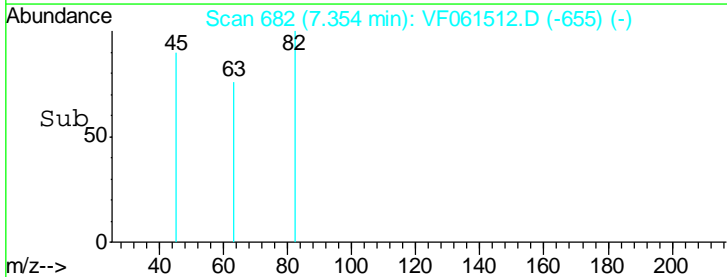
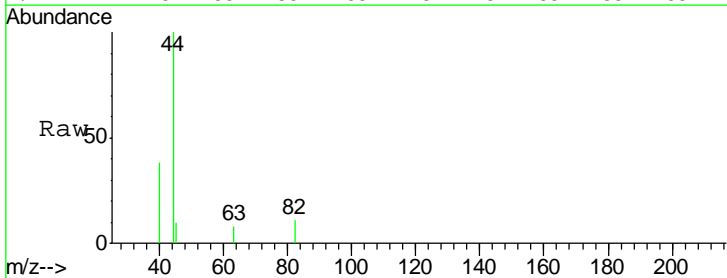
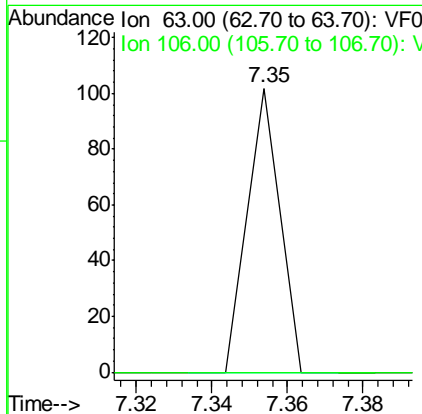
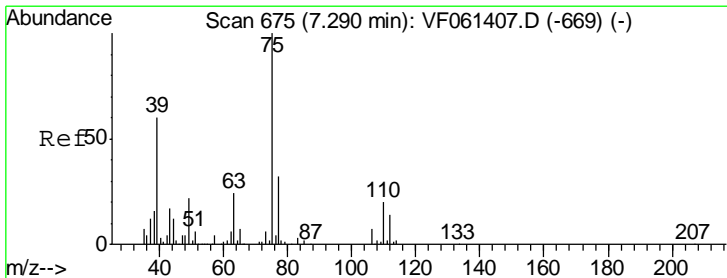
Instrument :
 MSVOA_F
 ClientSampled :
 MULCH-1

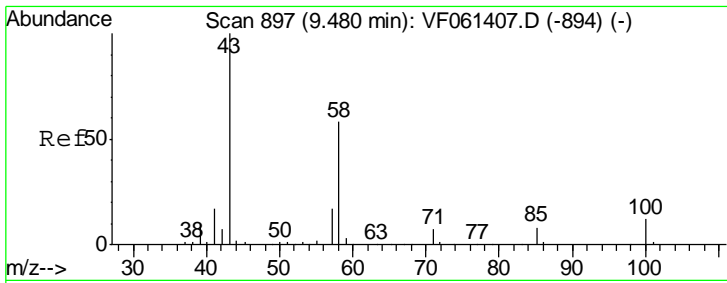
Tgt Ion	Resp	Lower	Upper
69	100		
41	100.8	57.5	86.3#
39	0.0	32.0	48.0#



#58
 2-Chloroethyl Vinyl ether
 Concen: 37.673 ug/l
 RT: 7.35 min Scan# 682
 Delta R.T. 0.06 min
 Lab File: VF061512.D
 Acq: 24 Jan 2019 20:57

Tgt Ion	Resp	Lower	Upper
63	100		
106	0.0	21.9	32.9#

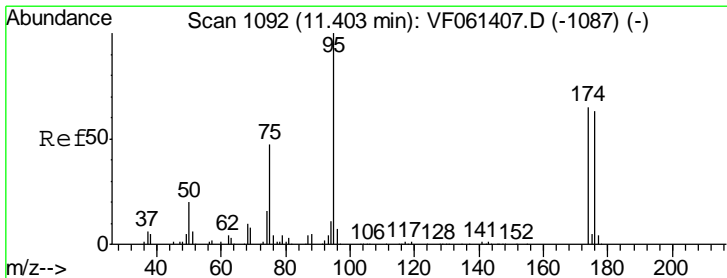
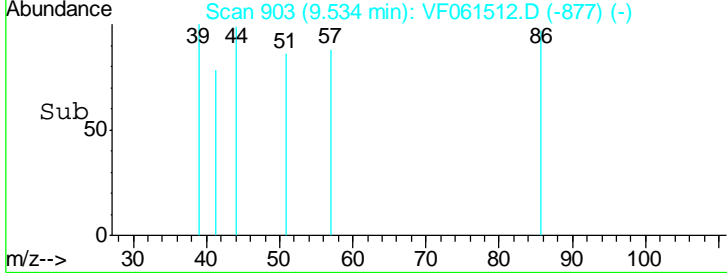
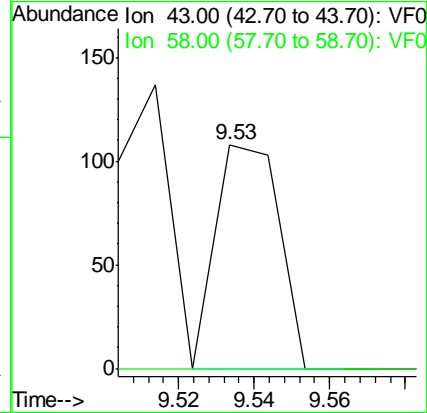
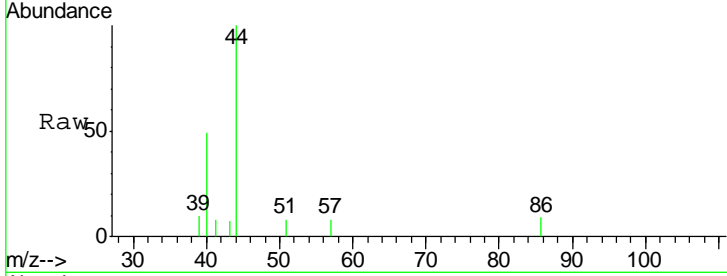




#59
 2-Hexanone
 Concen: 4.693 ug/l
 RT: 9.53 min Scan# 903
 Delta R.T. 0.05 min
 Lab File: VF061512.D
 Acq: 24 Jan 2019 20:57

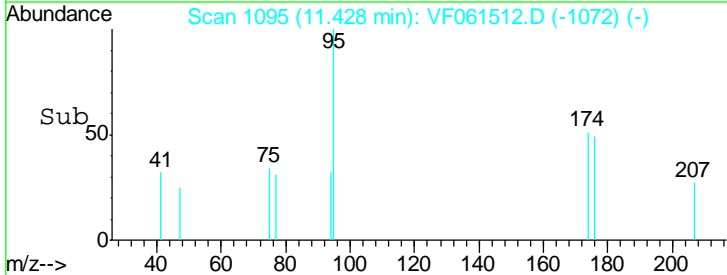
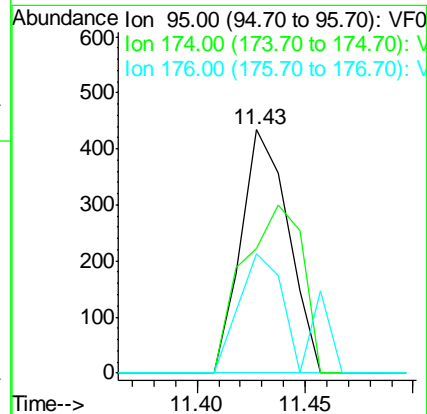
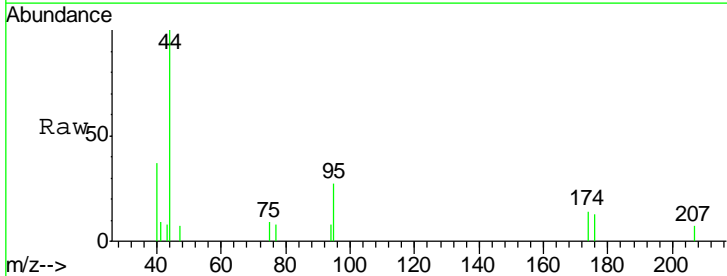
Instrument :
 MSVOA_F
 ClientSampled :
 MULCH-1

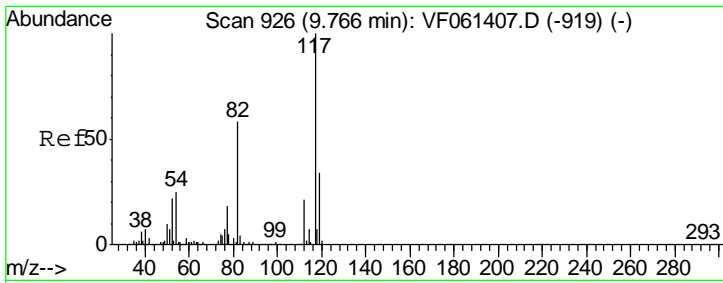
Tgt Ion	Resp	Lower	Upper
43	125		
43	100		
58	0.0	25.9	77.6#



#62
 4-Bromofluorobenzene
 Concen: 7.314 ug/l
 RT: 11.43 min Scan# 1095
 Delta R.T. 0.02 min
 Lab File: VF061512.D
 Acq: 24 Jan 2019 20:57

Tgt Ion	Resp	Lower	Upper
95	660		
95	100		
174	51.2	0.0	130.4
176	49.1	0.0	126.2

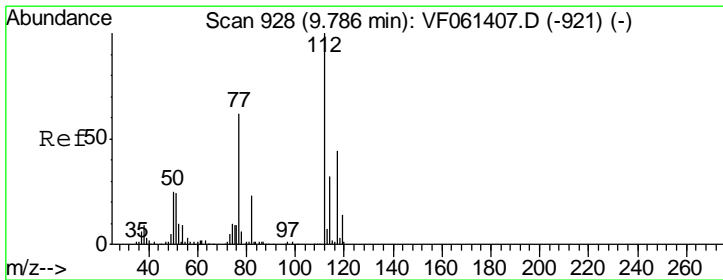
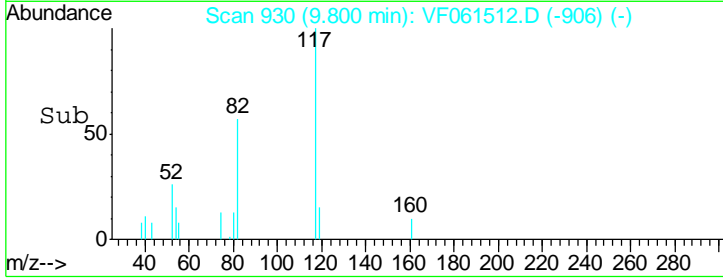
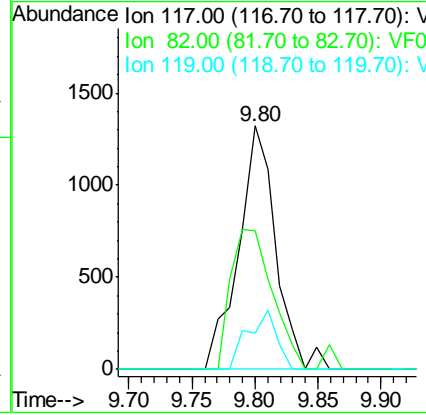
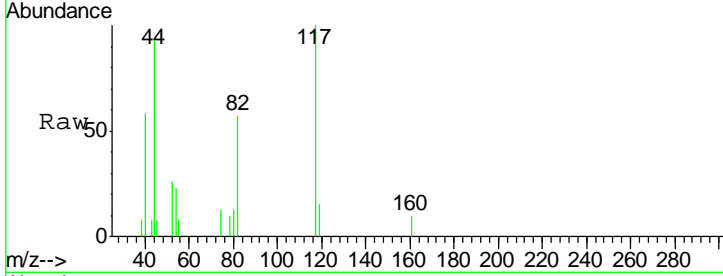




#63
 Chlorobenzene-d5
 Concen: 50.000 ug/l
 RT: 9.80 min Scan# 930
 Delta R.T. 0.03 min
 Lab File: VF061512.D
 Acq: 24 Jan 2019 20:57

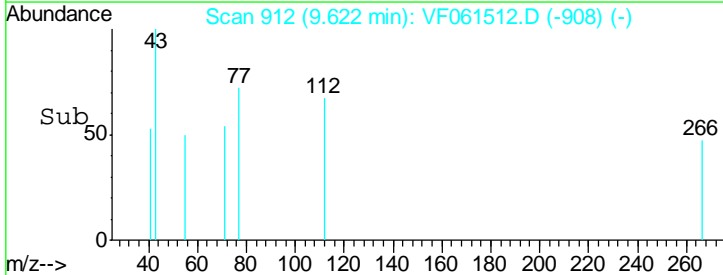
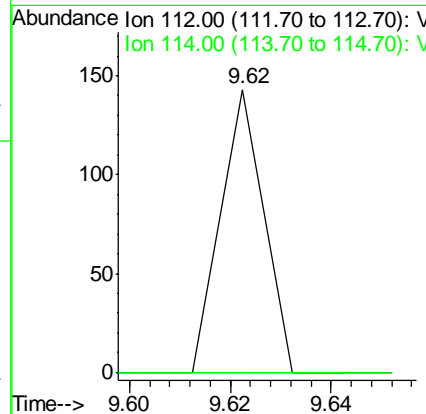
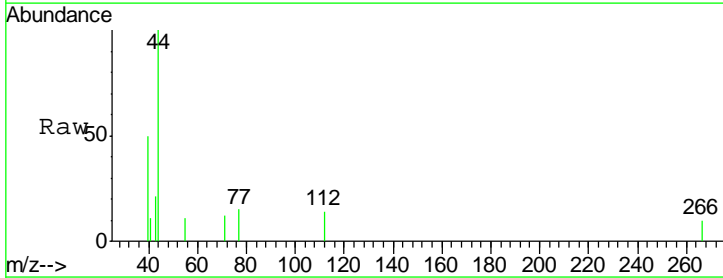
Instrument :
 MSVOA_F
 ClientSampled :
 MULCH-1

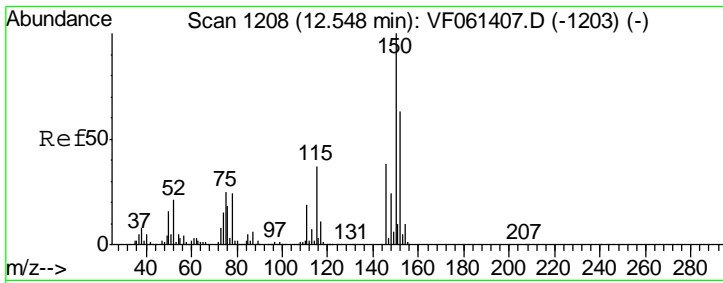
Tgt Ion	Resp	Lower	Upper
117	2705		
82	56.7	46.4	69.6
119	15.1	27.2	40.8#



#65
 Chlorobenzene
 Concen: 1.545 ug/l
 RT: 9.62 min Scan# 912
 Delta R.T. -0.16 min
 Lab File: VF061512.D
 Acq: 24 Jan 2019 20:57

Tgt Ion	Resp	Lower	Upper
112	85		
114	0.0	25.4	38.0#

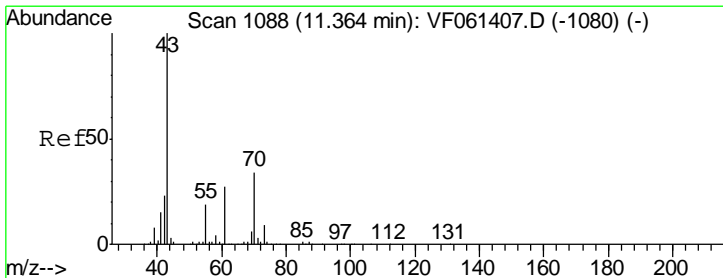
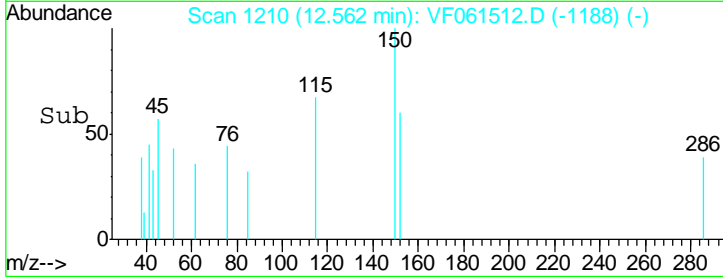
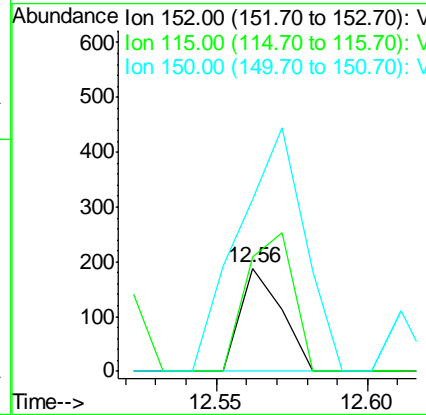
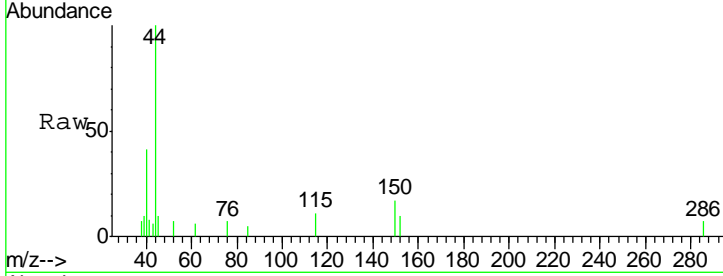




#72
 1,4-Dichlorobenzene-d4
 Concen: 50.000 ug/l
 RT: 12.56 min Scan# 1210
 Delta R.T. 0.01 min
 Lab File: VF061512.D
 Acq: 24 Jan 2019 20:57

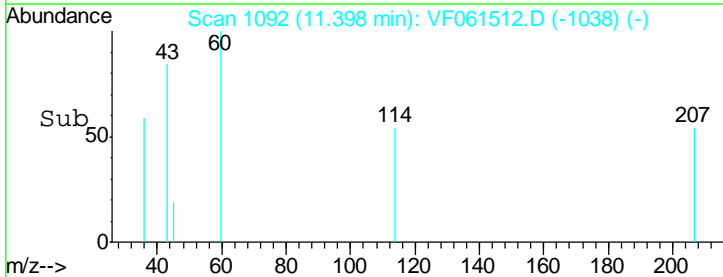
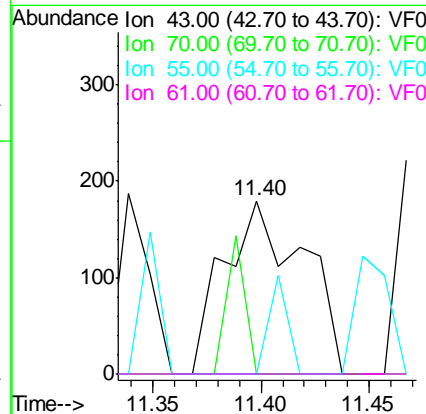
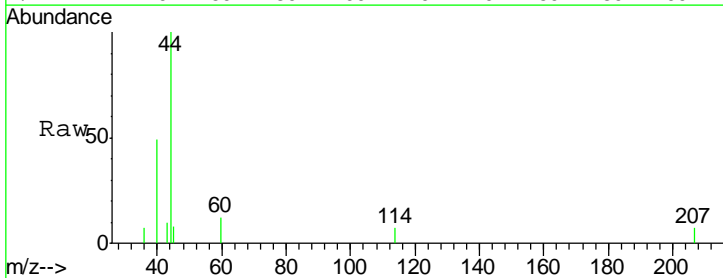
Instrument :
 MSVOA_F
 ClientSampled :
 MULCH-1

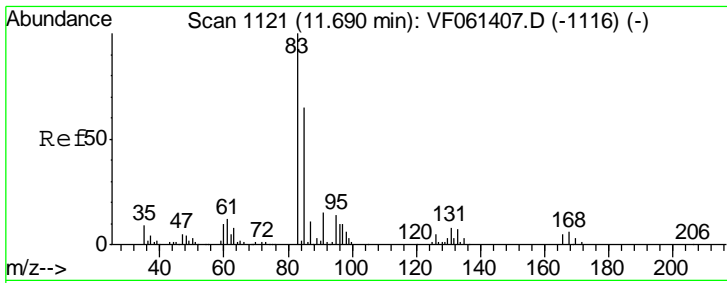
Tgt Ion	Resp	Lower	Upper
152	100		
115	111.1	30.0	90.0#
150	166.7	0.0	321.4



#74
 N-amyl acetate
 Concen: 133.623 ug/l
 RT: 11.40 min Scan# 1092
 Delta R.T. 0.03 min
 Lab File: VF061512.D
 Acq: 24 Jan 2019 20:57

Tgt Ion	Resp	Lower	Upper
43	100		
70	0.0	27.6	41.4#
55	0.0	15.4	23.2#
61	0.0	21.8	32.6#

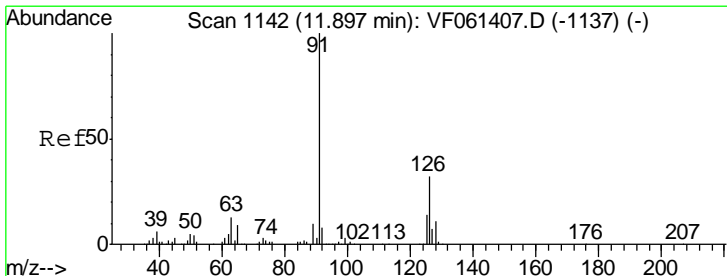
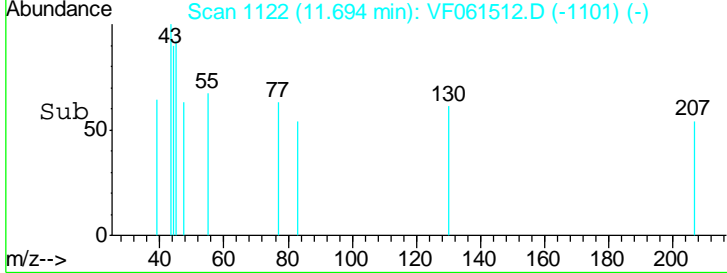
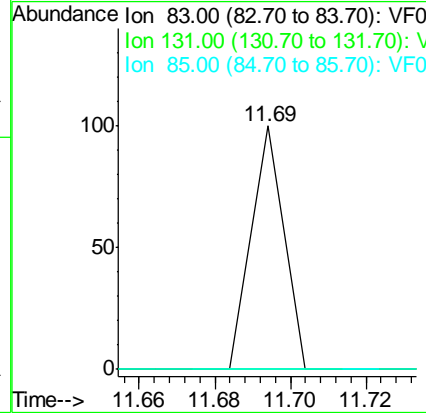
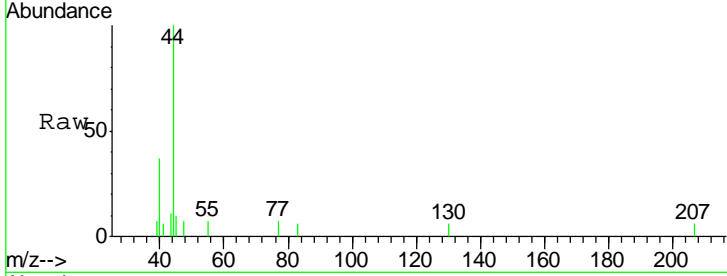




#75
 1,1,2,2-Tetrachloroethane
 Concen: 22.749 ug/l
 RT: 11.69 min Scan# 1122
 Delta R.T. 0.00 min
 Lab File: VF061512.D
 Acq: 24 Jan 2019 20:57

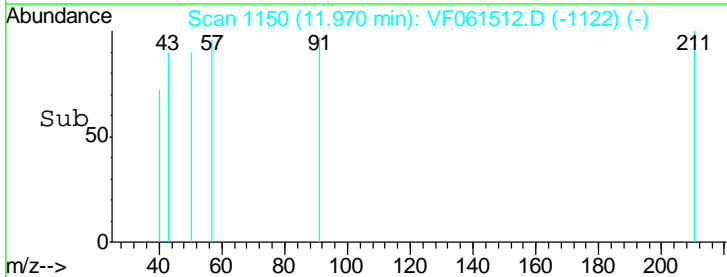
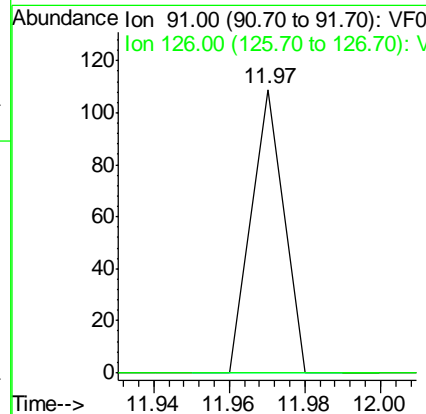
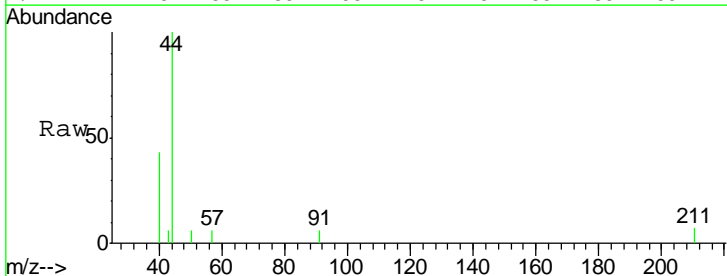
Instrument :
 MSVOA_F
 ClientSampled :
 MULCH-1

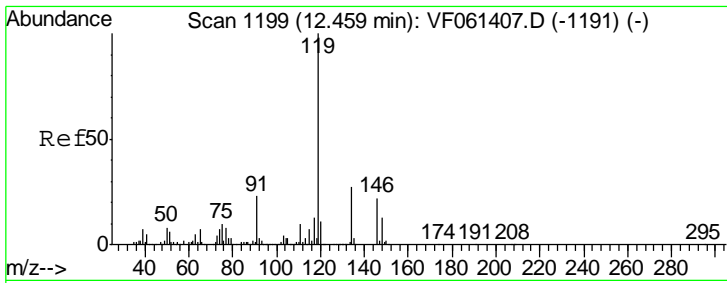
Tgt Ion	Resp	Lower	Upper
83	100		
131	0.0	4.0	12.2#
85	0.0	32.7	98.1#



#82
 4-Chlorotoluene
 Concen: 6.377 ug/l
 RT: 11.97 min Scan# 1150
 Delta R.T. 0.07 min
 Lab File: VF061512.D
 Acq: 24 Jan 2019 20:57

Tgt Ion	Resp	Lower	Upper
91	100		
126	0.0	16.0	47.9#

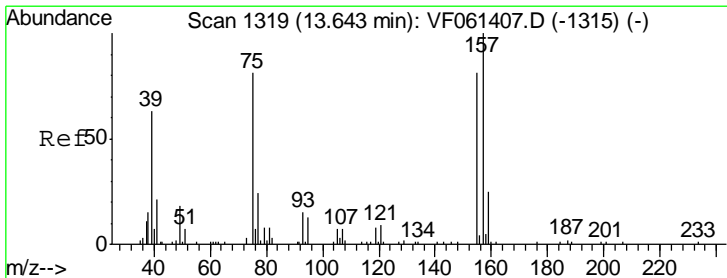
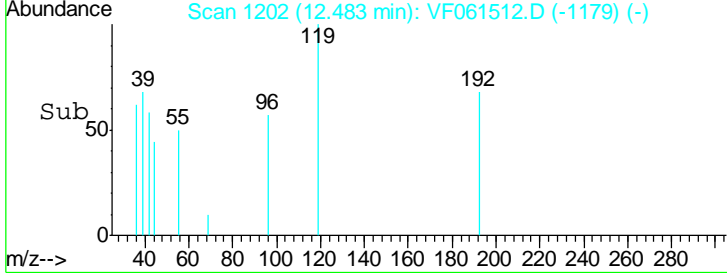
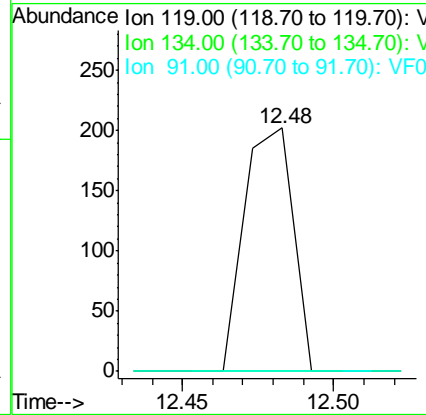
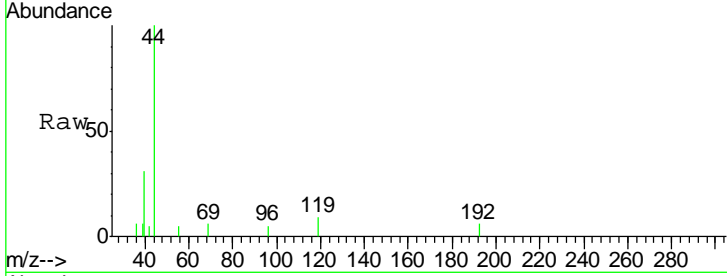




#86
 p-Isopropyltoluene
 Concen: 16.893 ug/l
 RT: 12.48 min Scan# 1202
 Delta R.T. 0.02 min
 Lab File: VF061512.D
 Acq: 24 Jan 2019 20:57

Instrument :
 MSVOA_F
 ClientSampled :
 MULCH-1

Tgt Ion	Resp	Lower	Upper
119	100		
134	0.0	13.4	40.2#
91	0.0	11.4	34.2#



#92
 1,2-Dibromo-3-Chloropropane
 Concen: 143.474 ug/l
 RT: 13.64 min Scan# 1319
 Delta R.T. -0.01 min
 Lab File: VF061512.D
 Acq: 24 Jan 2019 20:57

Tgt Ion	Resp	Lower	Upper
75	100		
155	0.0	49.7	149.1#
157	0.0	61.4	184.1#

