

Data Path : Z:\VOASRV\HPCHEM1\MSVOA F\DATA\VF012419\
 Data File : VF061502.D
 Acq On : 24 Jan 2019 16:09
 Operator : VA/AP
 Sample : K1223-09
 Misc : 5.36µ/5mL/MSVOA-F/SOIL
 ALS Vial : 12 Sample Multiplier: 1

Instrument :
 MSVOA_F
 ClientSampleId :
 TS-U

Integration Parameters: RTEINT.P

Integrator: RTE
 Smoothing : ON Filtering: 5
 Sampling : 1 Min Area: 3 % of largest Peak
 Start Thrs: 0.2 Max Peaks: 100
 Stop Thrs : 0 Peak Location: TOP

If leading or trailing edge < 100 prefer < Baseline drop else tangent >
 Peak separation: 5

Method : Z:\VOASRV\HPCHEM1\MSVOA_F\METHODS\82F011519S.M
 Title : SW846 8260

Signal : TIC

peak #	R.T. min	first scan	max scan	last scan	PK TY	peak height	corr. area	corr. % max.	% of total
1	1.075	41	45	49	rBV2	6256	16708	3.29%	0.601%
2	1.776	111	116	118	rBV2	3175	10486	2.07%	0.377%
3	1.914	128	130	132	rVB2	4207	5272	1.04%	0.190%
4	2.200	155	159	161	rBV4	6795	15544	3.06%	0.559%
5	2.259	161	165	172	rVV	33517	96011	18.92%	3.453%
6	2.368	172	176	182	rVV2	7416	20986	4.13%	0.755%
7	3.088	247	249	252	rVV	4693	5842	1.15%	0.210%
8	3.127	252	253	259	rVB5	4807	7538	1.49%	0.271%
9	4.055	342	347	349	rBV2	2723	7585	1.49%	0.273%
10	4.143	351	356	368	rVV2	68168	212546	41.88%	7.645%
11	4.370	372	379	386	rVV2	42511	136206	26.84%	4.899%
12	4.893	424	432	441	rBV2	148062	507555	100.00%	18.255%
13	5.633	500	507	517	rBV	157623	430433	84.81%	15.481%
14	6.136	551	558	560	rBV2	2598	5954	1.17%	0.214%
15	6.294	568	574	582	rVB6	4004	12903	2.54%	0.464%
16	6.471	582	592	597	rBV6	7929	30265	5.96%	1.089%
17	6.935	633	639	643	rBV3	3159	9288	1.83%	0.334%
18	7.181	656	664	667	rVV4	4351	13084	2.58%	0.471%
19	7.310	671	677	681	rBV3	4921	14705	2.90%	0.529%
20	7.586	700	705	711	rBV	119474	278427	54.86%	10.014%
21	8.178	760	765	768	rBV3	3120	6935	1.37%	0.249%
22	8.247	768	772	775	rBV3	2494	6392	1.26%	0.230%
23	9.805	925	930	939	rBV	126718	288167	56.78%	10.364%
24	10.516	1001	1002	1005	rBV	17232	15262	3.01%	0.549%
25	10.555	1005	1006	1008	rVV	28365	18974	3.74%	0.682%
26	10.871	1034	1038	1044	rVB3	10104	22073	4.35%	0.794%
27	11.246	1072	1076	1079	rBV4	2720	5862	1.15%	0.211%
28	11.433	1091	1095	1104	rVB	93068	169367	33.37%	6.092%
29	11.601	1104	1112	1116	rVB5	18403	39408	7.76%	1.417%
30	11.689	1116	1121	1123	rBV3	3761	6988	1.38%	0.251%
31	12.222	1172	1175	1180	rVB4	6564	11471	2.26%	0.413%
32	12.311	1180	1184	1187	rBV4	10125	22625	4.46%	0.814%
33	12.479	1196	1201	1204	rBV	11827	21831	4.30%	0.785%
34	12.577	1207	1211	1219	rVV	106405	194082	38.24%	6.980%

Data Path : Z:\VOASRV\HPCHEM1\MSVOA F\DATA\VF012419\
Data File : VF061502.D
Acq On : 24 Jan 2019 16:09
Operator : VA/AP
Sample : K1223-09
Misc : 5.36g/5mL/MSVOA-F/SOIL
ALS Vial : 12 Sample Multiplier: 1

Instrument :
MSVOA_F
ClientSampleId :
TS-U

Integration Parameters: RTEINT.P
Integrator: RTE
Smoothing : ON Filtering: 5
Sampling : 1 Min Area: 3 % of largest Peak
Start Thrs: 0.2 Max Peaks: 100
Stop Thrs : 0 Peak Location: TOP

If leading or trailing edge < 100 prefer < Baseline drop else tangent >
Peak separation: 5

Method : Z:\VOASRV\HPCHEM1\MSVOA_F\METHODS\82F011519S.M
Title : SW846 8260

35	12.922	1243	1246	1250	rBV5	5249	8398	1.65%	0.302%
36	13.110	1263	1265	1269	rBV4	3016	6832	1.35%	0.246%
37	13.307	1279	1285	1289	rVV3	4813	11928	2.35%	0.429%
38	13.800	1331	1335	1340	rVV	20627	34449	6.79%	1.239%
39	14.165	1369	1372	1375	rBV3	2230	5158	1.02%	0.186%
40	14.451	1398	1401	1403	rBV2	9291	14878	2.93%	0.535%
41	14.481	1403	1404	1409	rVB3	6862	9874	1.95%	0.355%
42	15.763	1531	1534	1540	rVB4	8118	15700	3.09%	0.565%
43	15.921	1547	1550	1555	rVB5	2263	6370	1.26%	0.229%

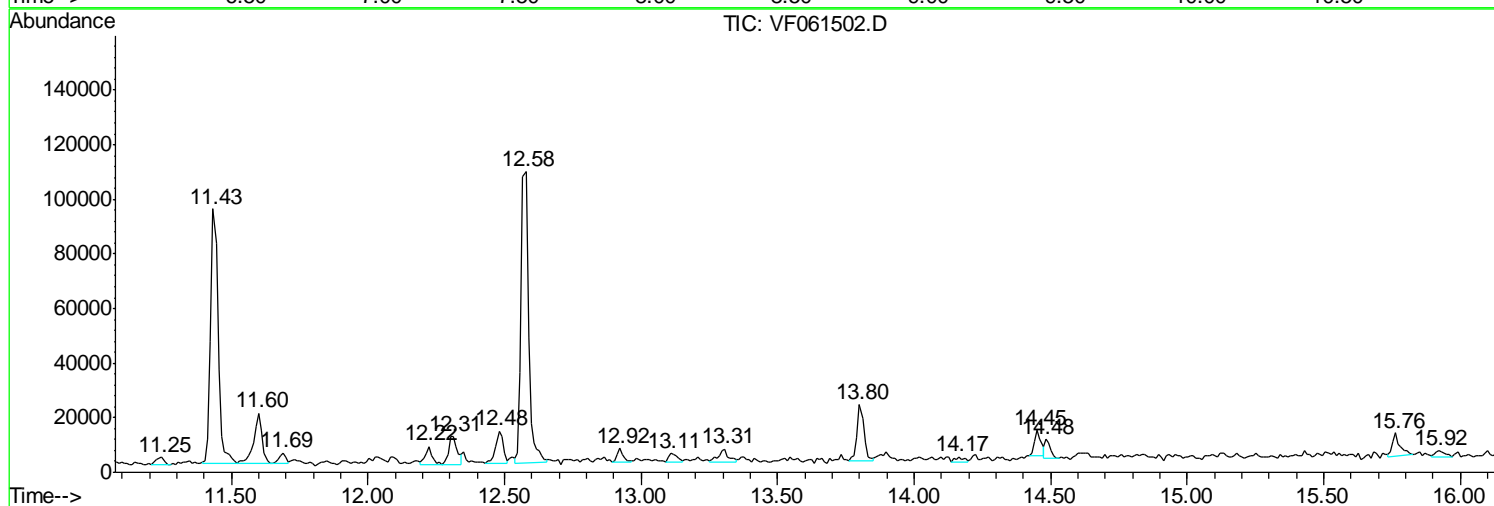
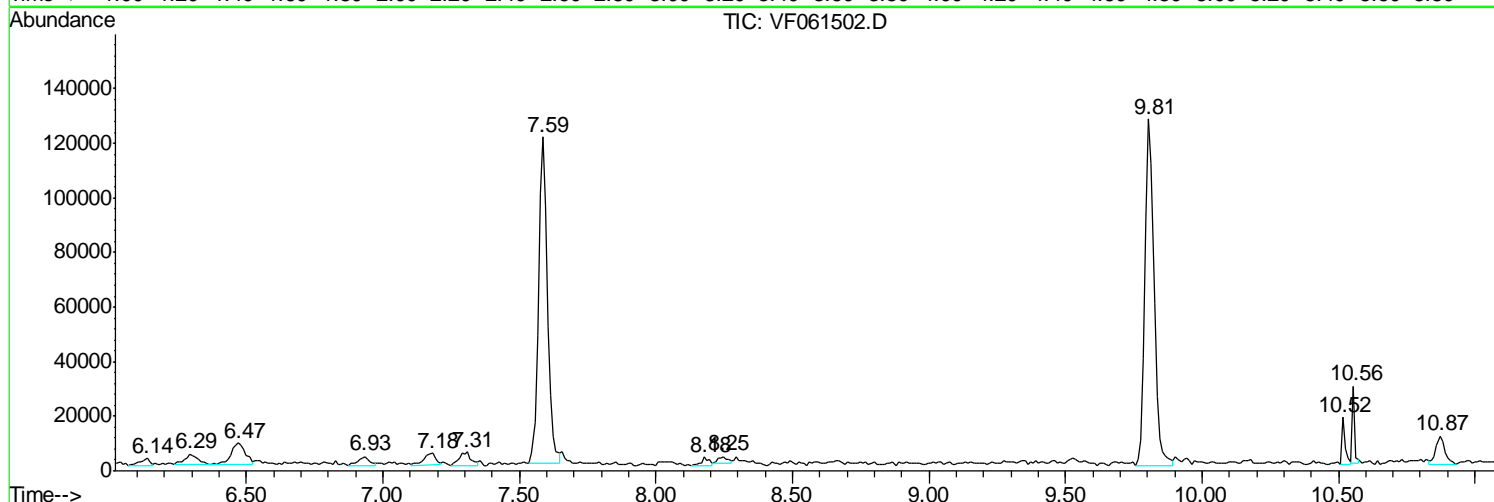
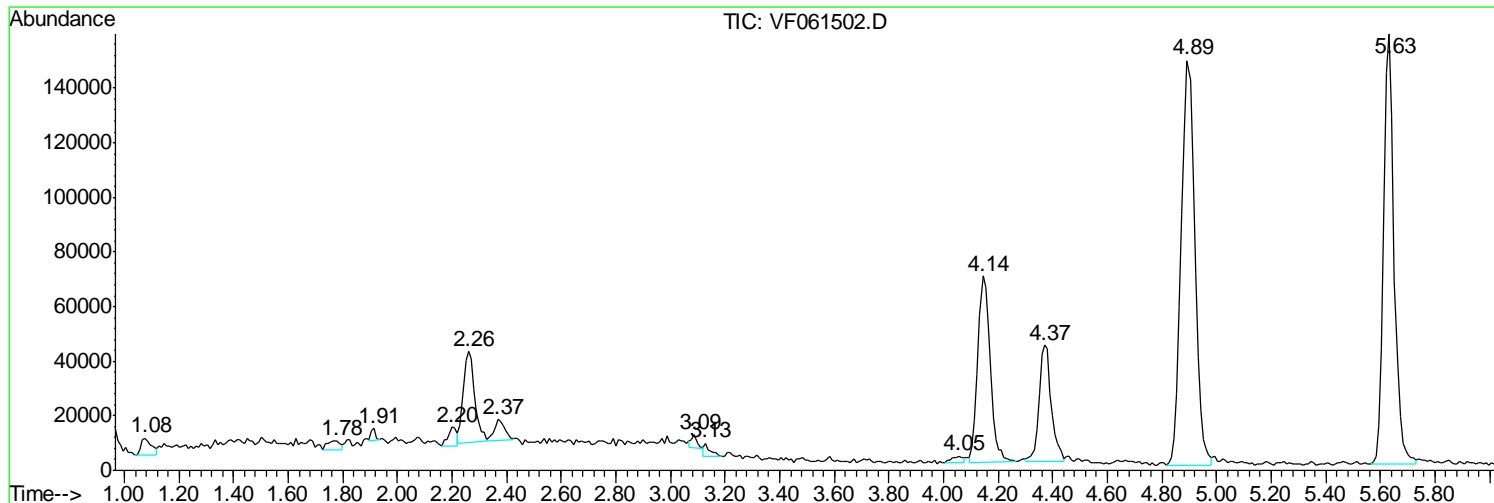
Sum of corrected areas: 2780362

Data Path : Z:\VOASRV\HPCHEM1\MSVOA F\DATA\VF012419\
 Data File : VF061502.D
 Acq On : 24 Jan 2019 16:09
 Operator : VA/AP
 Sample : K1223-09
 Misc : 5.36µ/5mL/MSVOA-F/SOIL
 ALS Vial : 12 Sample Multiplier: 1

Instrument :
 MSVOA_F
 ClientSampled :
 TS-U

Quant Method : Z:\VOASRV\HPCHEM1\MSVOA_F\METHODS\82F011519S.M
 Quant Title : SW846 8260

TIC Library : C:\DATABASE\NIST11.L
 TIC Integration Parameters: LSCINT.P



Data Path : Z:\VOASRV\HPCHEM1\MSVOA F\DATA\VF012419\
 Data File : VF061502.D
 Acq On : 24 Jan 2019 16:09
 Operator : VA/AP
 Sample : K1223-09
 Misc : 5.36µ/5mL/MSVOA-F/SOIL
 ALS Vial : 12 Sample Multiplier: 1

Instrument :
 MSVOA_F
 ClientSampled :
 TS-U

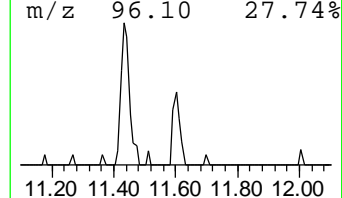
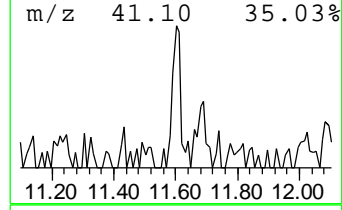
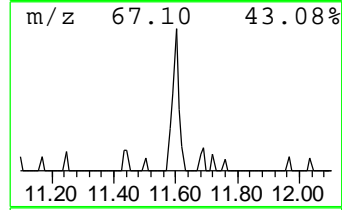
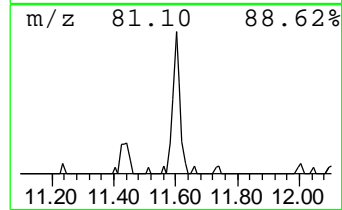
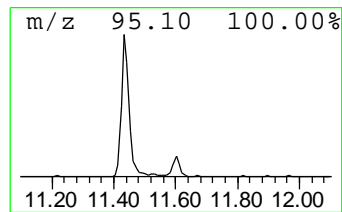
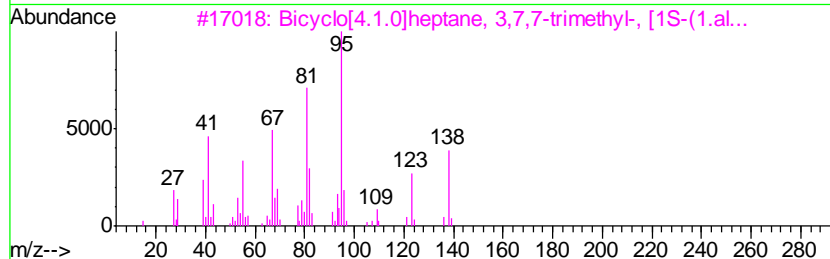
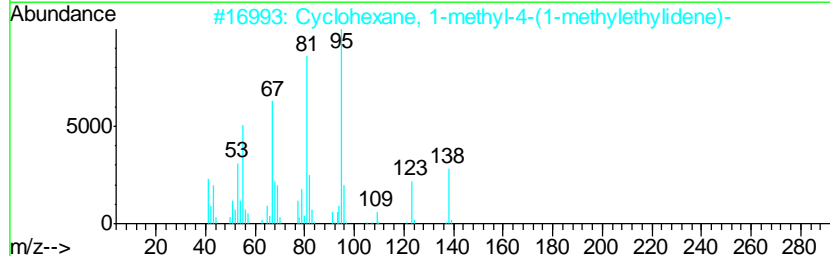
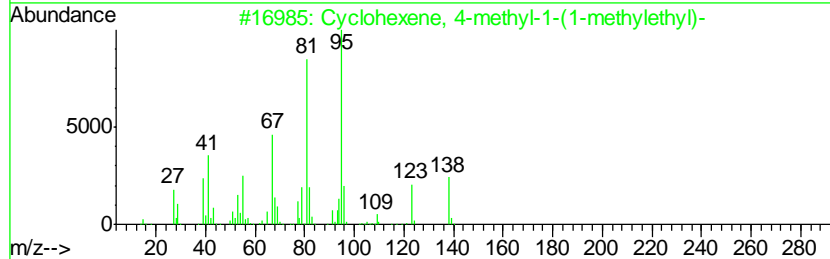
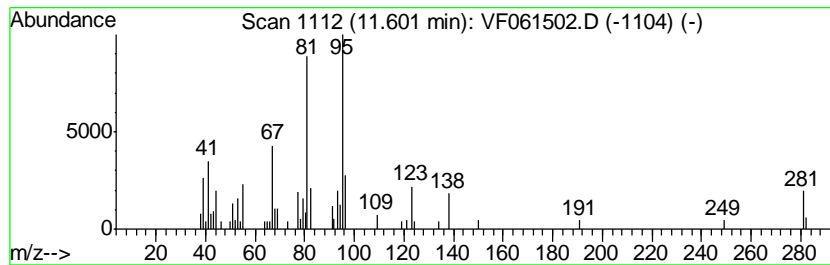
Quant Method : Z:\VOASRV\HPCHEM1\MSVOA_F\METHODS\82F011519S.M
 Quant Title : SW846 8260

TIC Library : C:\DATABASE\NIST11.L
 TIC Integration Parameters: LSCINT.P

 Peak Number 1 Cyclohexene, 4-methyl-1-(1-... Concentration Rank 1

R.T.	EstConc	Area	Relative to ISTD	R.T.
11.60	10.15 ug/l	39408	1,4-Dichlorobenzene-d4	12.58

Hit#	of	Tentative ID	MW	MolForm	CAS#	Qual
1	5	Cyclohexene, 4-methyl-1-(1-methy...	138	C10H18	000500-00-5	96
2		Cyclohexane, 1-methyl-4-(1-methy...	138	C10H18	001124-27-2	91
3		Bicyclo[4.1.0]heptane, 3,7,7-tri...	138	C10H18	002778-68-9	87
4		Bicyclo[4.1.0]heptane, 3,7,7-tri...	138	C10H18	018968-23-5	83
5		Cyclohexene, 4-methyl-1-(1-methy...	138	C10H18	000619-52-3	59



Data Path : Z:\VOASRV\HPCHEM1\MSVOA F\DATA\VF012419\
 Data File : VF061502.D
 Acq On : 24 Jan 2019 16:09
 Operator : VA/AP
 Sample : K1223-09
 Misc : 5.36µ/5mL/MSVOA-F/SOIL
 ALS Vial : 12 Sample Multiplier: 1

Instrument :
 MSVOA_F
 ClientSampled :
 TS-U

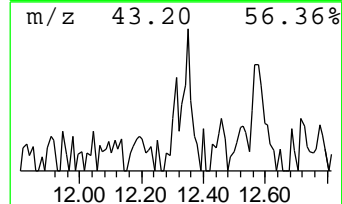
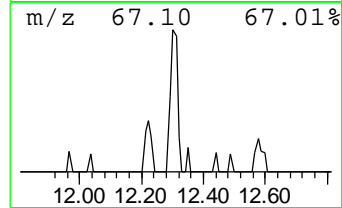
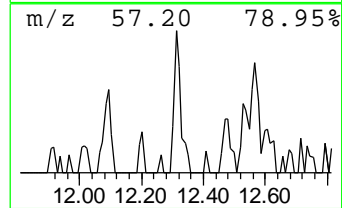
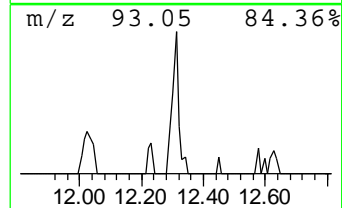
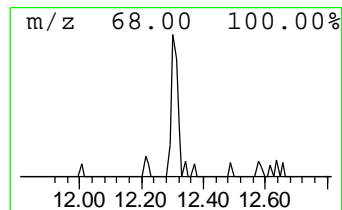
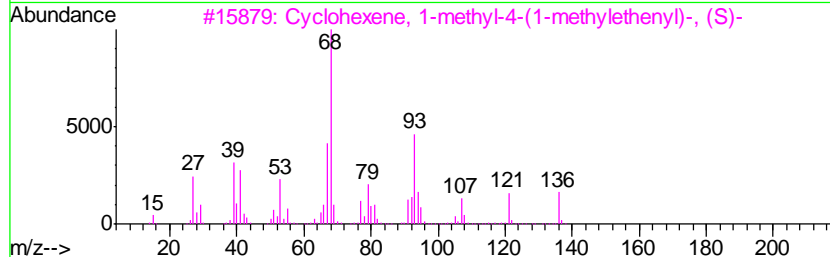
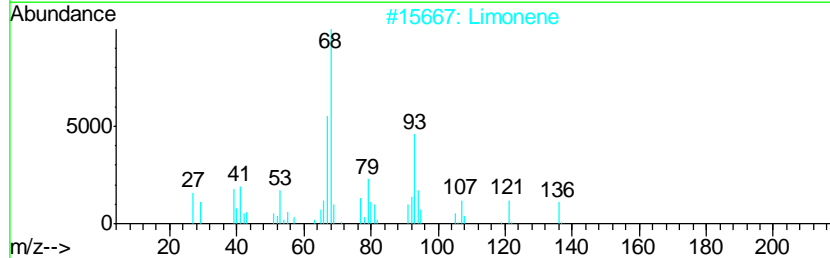
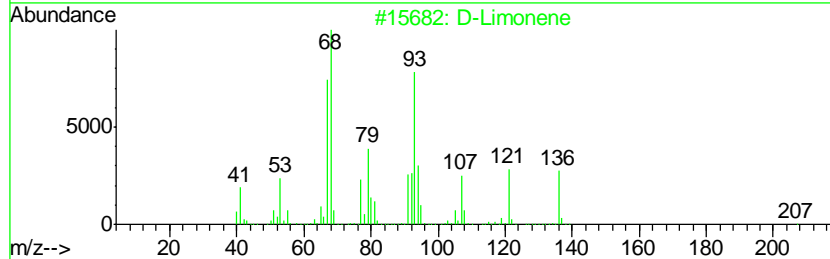
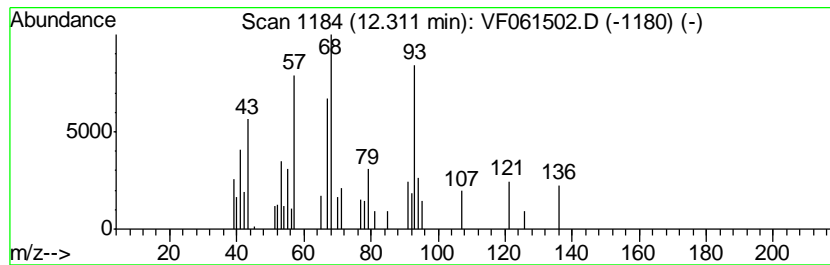
Quant Method : Z:\VOASRV\HPCHEM1\MSVOA_F\METHODS\82F011519S.M
 Quant Title : SW846 8260

TIC Library : C:\DATABASE\NIST11.L
 TIC Integration Parameters: LSCINT.P

 Peak Number 2 D-Limonene Concentration Rank 3

R.T.	EstConc	Area	Relative to ISTD	R.T.
12.31	5.83 ug/l	22625	1,4-Dichlorobenzene-d4	12.58

Hit#	of	Tentative ID	MW	MolForm	CAS#	Qual
1	5	D-Limonene	136	C10H16	005989-27-5	94
2		Limonene	136	C10H16	000138-86-3	90
3		Cyclohexene, 1-methyl-4-(1-methyl-...)	136	C10H16	005989-54-8	83
4		Cyclohexene, 1-methyl-5-(1-methyl-...)	136	C10H16	013898-73-2	80
5		Cyclobutane, 1,3-diisopropenyl-, ...	136	C10H16	1000152-89-6	59



Data Path : Z:\VOASRV\HPCHEM1\MSVOA F\DATA\VF012419\
 Data File : VF061502.D
 Acq On : 24 Jan 2019 16:09
 Operator : VA/AP
 Sample : K1223-09
 Misc : 5.36µ/5mL/MSVOA-F/SOIL
 ALS Vial : 12 Sample Multiplier: 1

Instrument :
 MSVOA_F
 ClientSampleID :
 TS-U

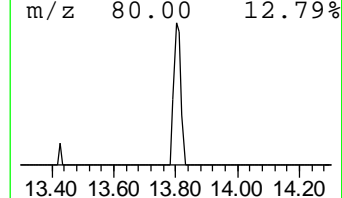
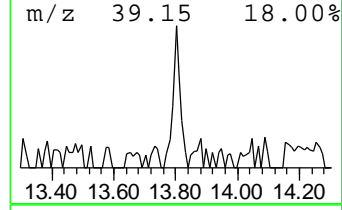
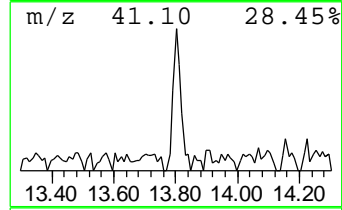
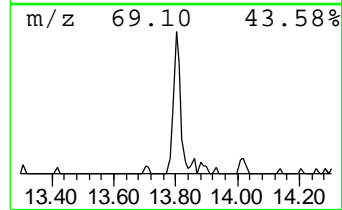
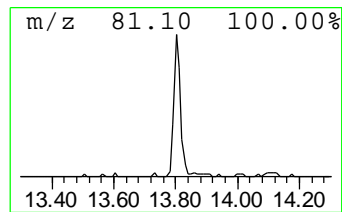
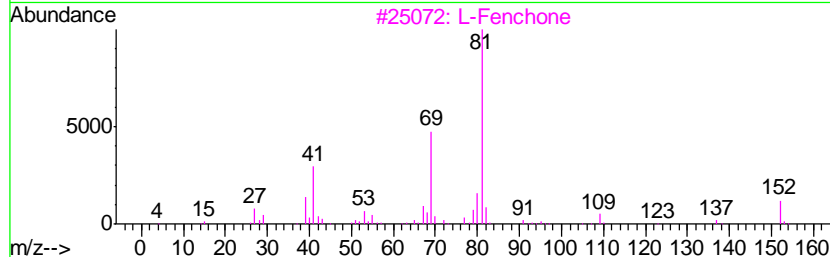
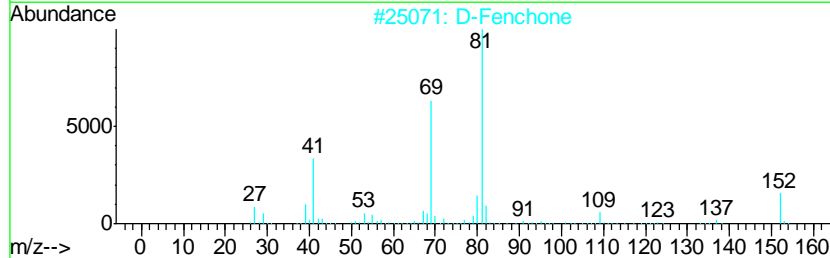
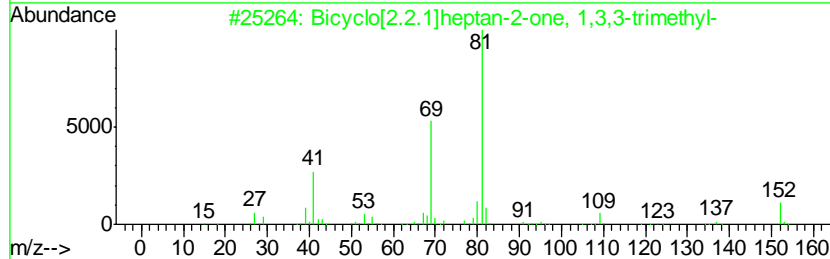
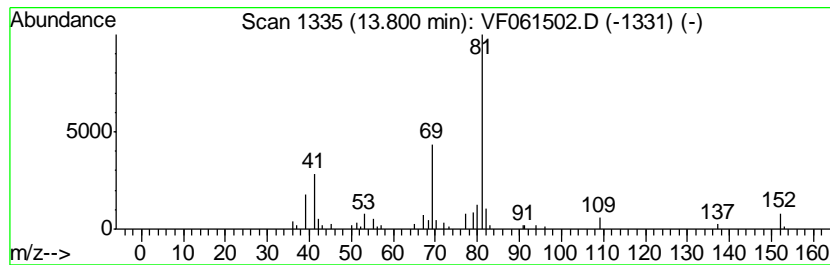
Quant Method : Z:\VOASRV\HPCHEM1\MSVOA_F\METHODS\82F011519S.M
 Quant Title : SW846 8260

TIC Library : C:\DATABASE\NIST11.L
 TIC Integration Parameters: LSCINT.P

 Peak Number 3 Bicyclo[2.2.1]heptan-2-one,... Concentration Rank 2

R.T.	EstConc	Area	Relative to ISTD	R.T.
13.80	8.87 ug/l	34449	1,4-Dichlorobenzene-d4	12.58

Hit#	of	Tentative ID	MW	MolForm	CAS#	Qual
1	5	Bicyclo[2.2.1]heptan-2-one, 1,3,...	152	C10H16O	001195-79-5	91
2		D-Fenchone	152	C10H16O	004695-62-9	91
3		L-Fenchone	152	C10H16O	007787-20-4	91
4		Furan, 2-hexyl-	152	C10H16O	003777-70-6	59
5		Ethanone, 1-(2-methyl-2-cyclopen...	124	C8H12O	001767-84-6	50



Data Path : Z:\VOASRV\HPCHEM1\MSVOA_F\DATA\VF012419\
Data File : VF061502.D
Acq On : 24 Jan 2019 16:09
Operator : VA/AP
Sample : K1223-09
Misc : 5.36g/5mL/MSVOA-F/SOIL
ALS Vial : 12 Sample Multiplier: 1

Instrument :
MSVOA_F
ClientSampleId :
TS-U

Quant Method : Z:\VOASRV\HPCHEM1\MSVOA_F\METHODS\82F011519S.M
Quant Title : SW846 8260

TIC Library : C:\DATABASE\NIST11.L
TIC Integration Parameters: LSCINT.P

TIC Top Hit name	RT	EstConc	Units	Response	--Internal Standard--			
					#	RT	Resp	Conc
Cyclohexene, 4-me...	11.60	10.2	ug/l	39408	4	12.58	194082	50.0
D-Limonene	12.31	5.8	ug/l	22625	4	12.58	194082	50.0
Bicyclo[2.2.1]hep...	13.80	8.9	ug/l	34449	4	12.58	194082	50.0