

Data Path : Z:\VOASRV\HPCHEM1\MSVOA\_F\DATA\VF020819\  
 Data File : VF061575.D  
 Acq On : 8 Feb 2019 23:33  
 Operator : VA/AP  
 Sample : K1349-03RE  
 Misc : 7.61g/5mL/MSVOA-F/SOIL  
 ALS Vial : 18 Sample Multiplier: 1

Instrument :  
 MSVOA\_F  
 ClientSampleId :  
 OR-03-020719-BRE

Quant Time: Feb 09 04:34:16 2019  
 Quant Method : Z:\VOASRV\HPCHEM1\MSVOA\_F\METHODS\82F011519S.M  
 Quant Title : SW846 8260  
 QLast Update : Wed Jan 16 04:51:59 2019  
 Response via : Initial Calibration

Internal Standards	R.T.	QIon	Response	Conc	Units	Dev(Min)
1) Pentafluorobenzene	0.00	168	0	0.00	ug/l	-4.86
34) 1,4-Difluorobenzene	5.57	114	69	50.00	ug/l	-0.02
63) Chlorobenzene-d5	0.00	117	0	0.00	ug/l	-9.77
72) 1,4-Dichlorobenzene-d4	0.00	152	0	0.00	ug/l	-12.55

## System Monitoring Compounds

33) 1,2-Dichloroethane-d4	4.71	65	73	0.00	ug/l	-0.12
Spiked Amount	50.000		Recovery	=	0.00%	
35) Dibromofluoromethane	0.00	113	0	0.00	ug/l	
Spiked Amount	50.000		Recovery	=	0.00%	
50) Toluene-d8	0.00	98	0	0.00	ug/l	
Spiked Amount	50.000		Recovery	=	0.00%	
62) 4-Bromofluorobenzene	0.00	95	0	0.00	ug/l	
Spiked Amount	50.000		Recovery	=	0.00%	

## Target Compounds

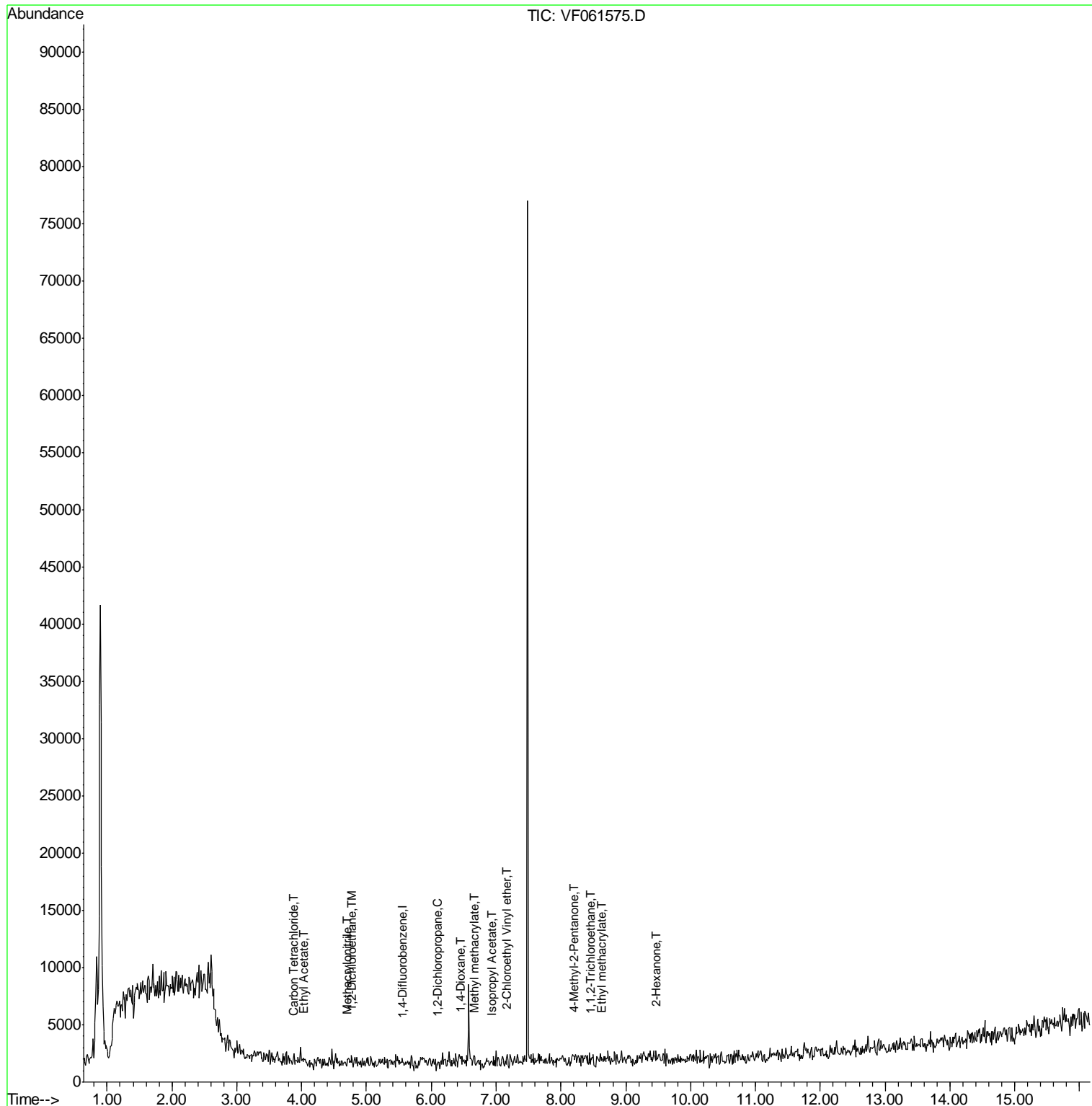
					Qvalue	
37) Ethyl Acetate	4.04	43	73	228.272	ug/l #	5
38) Carbon Tetrachloride	3.86	117	68	97.225	ug/l #	11
41) Methacrylonitrile	4.70	41	63	370.231	ug/l #	29
42) 1,2-Dichloroethane	4.78	62	75	118.230	ug/l	76
43) Isopropyl Acetate	6.93	43	79	196.829	ug/l #	51
45) 1,2-Dichloropropane	6.11	63	60	128.420	ug/l #	44
48) Methyl methacrylate	6.68	41	67	248.592	ug/l #	19
49) 1,4-Dioxane	6.45	88	84	47904.675	ug/l #	13
51) 4-Methyl-2-Pentanone	8.20	43	159	538.862	ug/l #	39
55) 1,1,2-Trichloroethane	8.46	97	83	249.322	ug/l #	14
56) Ethyl methacrylate	8.64	69	78	201.390	ug/l #	21
58) 2-Chloroethyl Vinyl ether	7.16	63	69	1539.433	ug/l #	47
59) 2-Hexanone	9.46	43	68	330.489	ug/l #	26

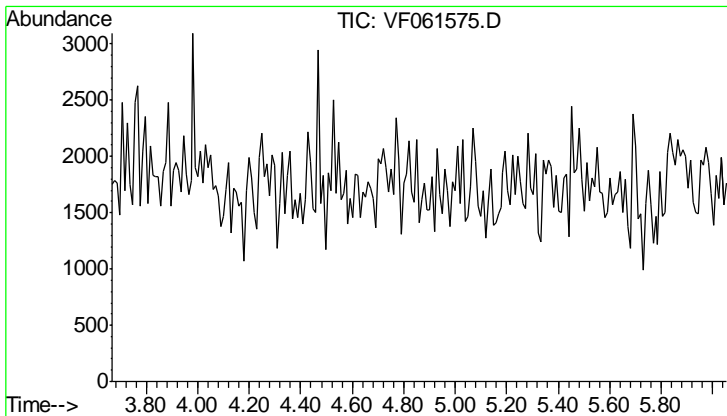
(#) = qualifier out of range (m) = manual integration (+) = signals summed

Data Path : Z:\VOASRV\HPCHEM1\MSVOA\_F\DATA\VF020819\  
 Data File : VF061575.D  
 Acq On : 8 Feb 2019 23:33  
 Operator : VA/AP  
 Sample : K1349-03RE  
 Misc : 7.61g/5mL/MSVOA-F/SOIL  
 ALS Vial : 18 Sample Multiplier: 1

Instrument :  
 MSVOA\_F  
 ClientSampleId :  
 OR-03-020719-BRE

Quant Time: Feb 09 04:34:16 2019  
 Quant Method : Z:\VOASRV\HPCHEM1\MSVOA\_F\METHODS\82F011519S.M  
 Quant Title : SW846 8260  
 QLast Update : Wed Jan 16 04:51:59 2019  
 Response via : Initial Calibration

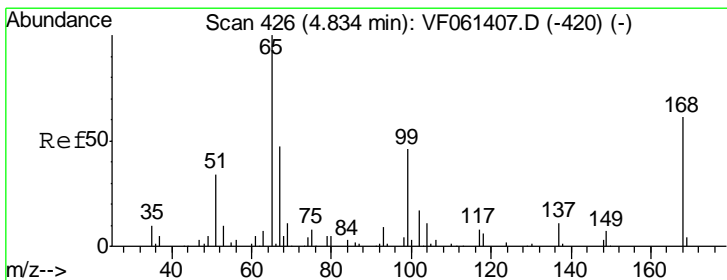
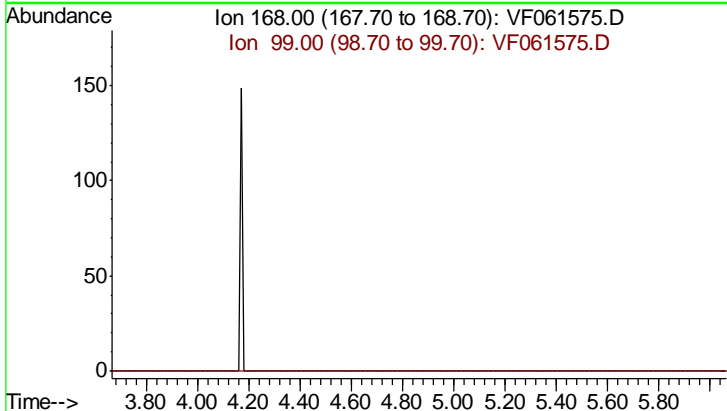




#1  
 Pentafluorobenzene  
 Concen: 0.000 ug/l  
 Expected RT: 4.86 min  
 Lab File: VF061575.D  
 Acq: 8 Feb 2019 23:33

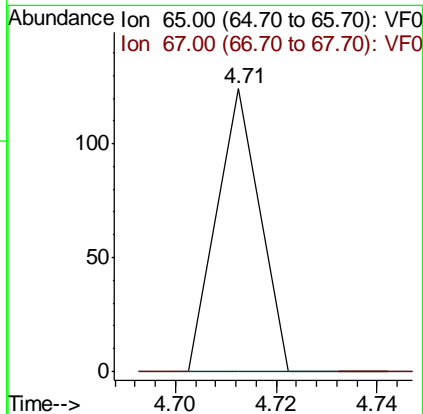
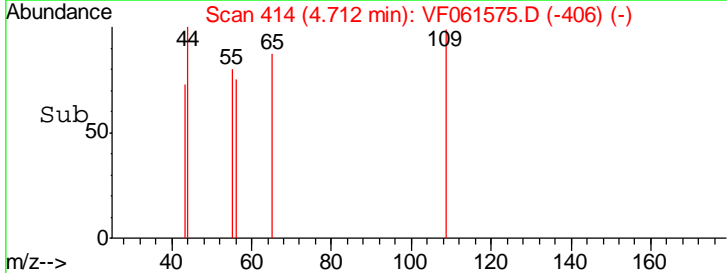
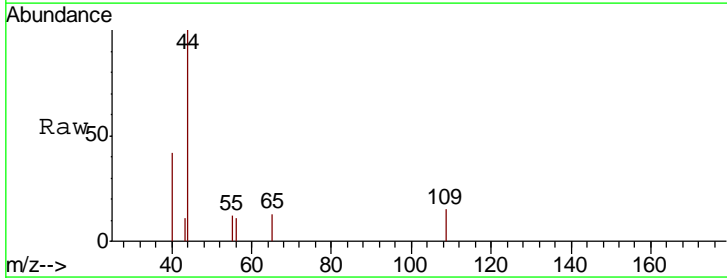
Instrument : MSVOA\_F  
 ClientSampleId : OR-03-020719-BRE

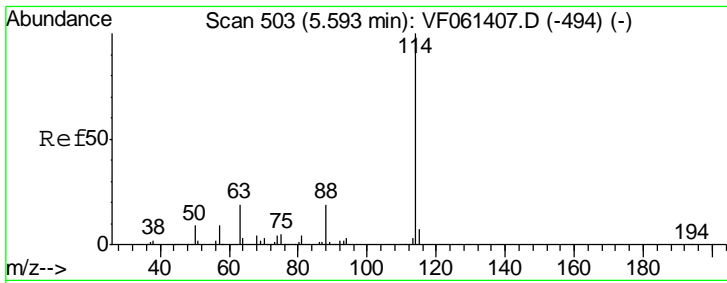
Tgt Ion: 168  
 Sig Exp Ratio  
 168 100  
 99 66.9



#33  
 1,2-Dichloroethane-d4  
 Concen: 0.000 ug/l  
 RT: 4.71 min Scan# 414  
 Delta R.T. -0.12 min  
 Lab File: VF061575.D  
 Acq: 8 Feb 2019 23:33

Tgt Ion: 65 Resp: 73  
 Ion Ratio Lower Upper  
 65 100  
 67 0.0 0.0 99.8

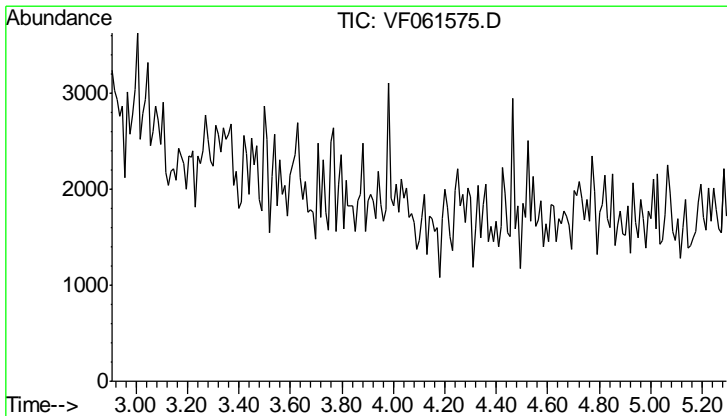
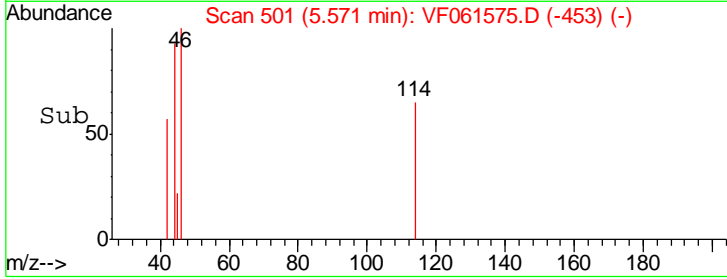
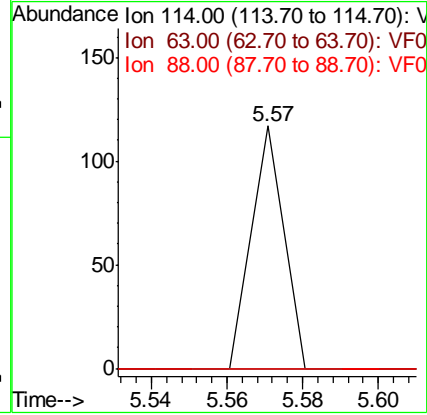
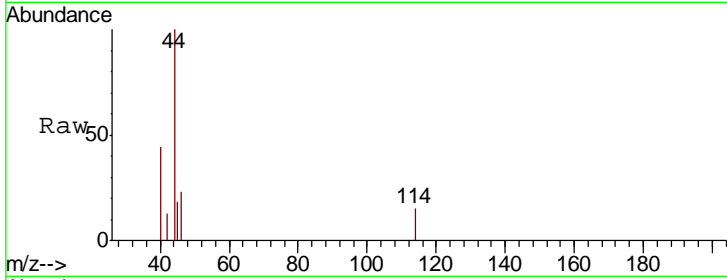




#34  
 1,4-Difluorobenzene  
 Concen: 50.000 ug/l  
 RT: 5.57 min Scan# 501  
 Delta R.T. -0.02 min  
 Lab File: VF061575.D  
 Acq: 8 Feb 2019 23:33

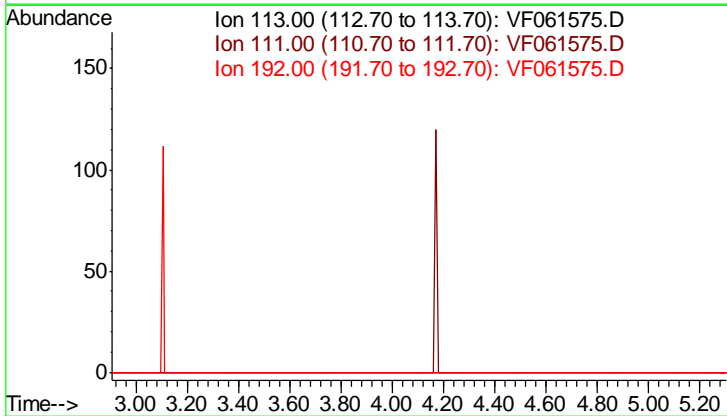
Instrument :  
 MSVOA\_F  
 ClientSampled :  
 OR-03-020719-BRE

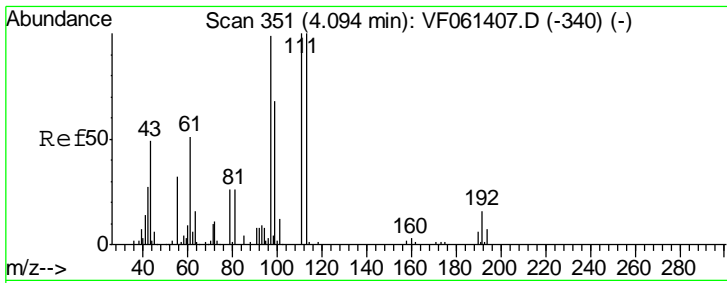
Tgt Ion	Resp	Lower	Upper
114	100		
63	0.0	0.0	39.0
88	0.0	0.0	37.4



#35  
 Dibromofluoromethane  
 Concen: 0.000 ug/l  
 Expected RT: 4.10 min  
 Lab File: VF061575.D  
 Acq: 8 Feb 2019 23:33

Tgt Ion	Sig	Exp Ratio
113	100	
111	99.2	
192	15.5	

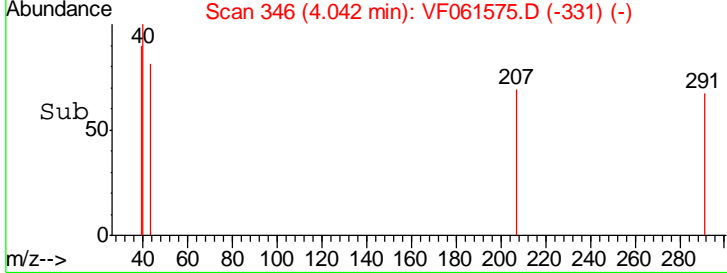
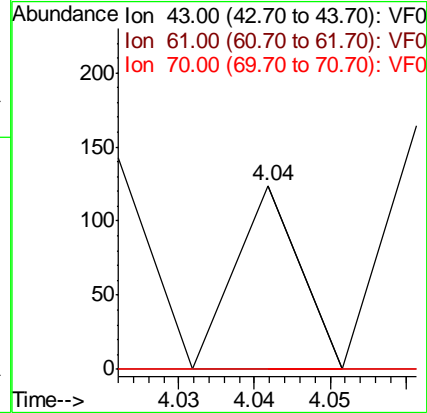
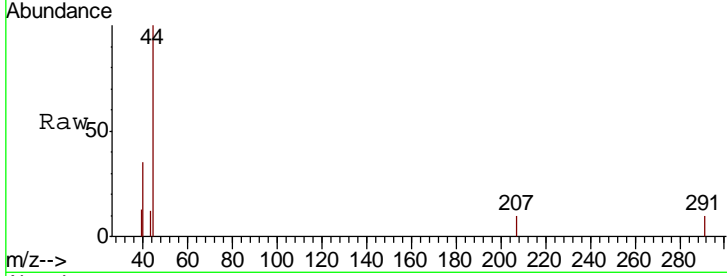




#37  
 Ethyl Acetate  
 Concen: 228.272 ug/l  
 RT: 4.04 min Scan# 346  
 Delta R.T. -0.05 min  
 Lab File: VF061575.D  
 Acq: 8 Feb 2019 23:33

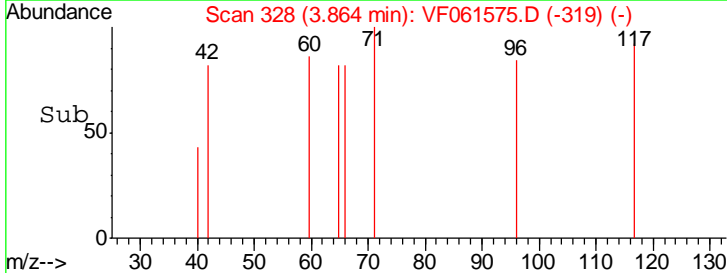
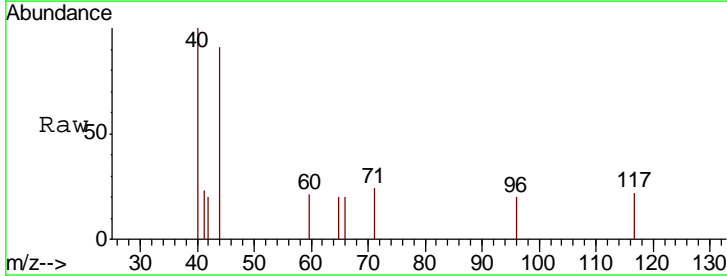
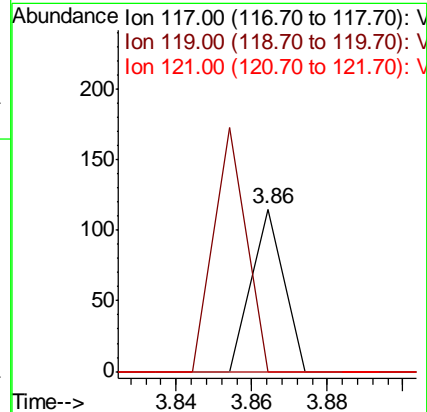
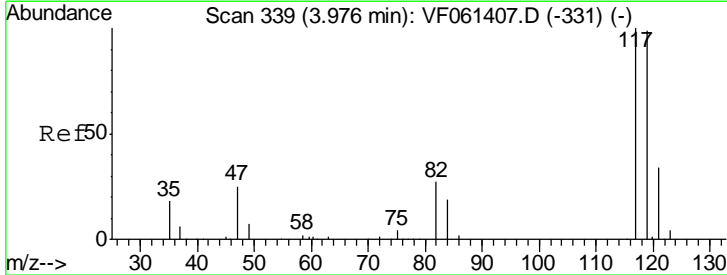
**Instrument :**  
 MSVOA\_F  
**ClientSampled :**  
 OR-03-020719-BRE

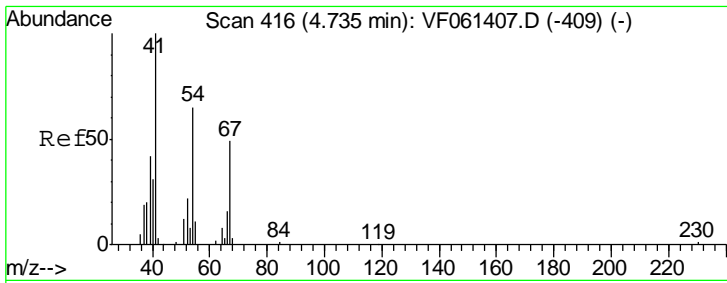
Tgt Ion	Resp	Lower	Upper
43	100		
61	0.0	81.7	122.5#
70	0.0	6.2	9.2#



#38  
 Carbon Tetrachloride  
 Concen: 97.225 ug/l  
 RT: 3.86 min Scan# 328  
 Delta R.T. -0.11 min  
 Lab File: VF061575.D  
 Acq: 8 Feb 2019 23:33

Tgt Ion	Resp	Lower	Upper
117	100		
119	0.0	79.0	118.6#
121	0.0	27.0	40.6#

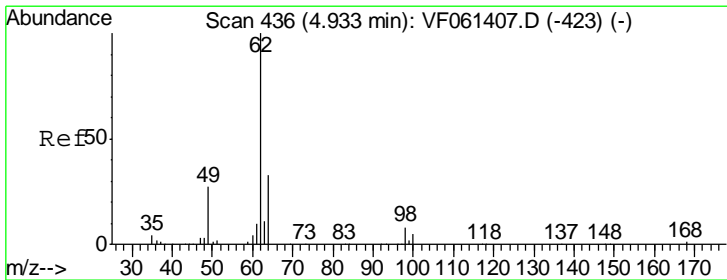
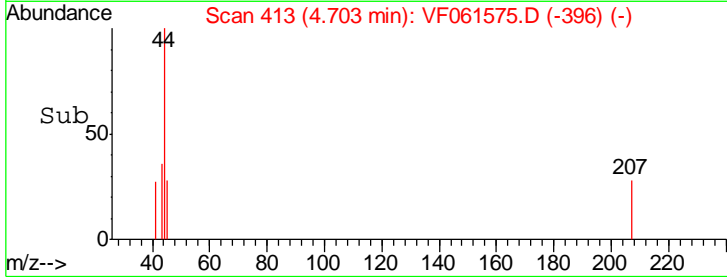
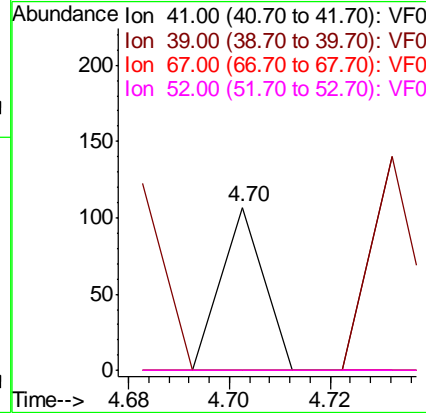
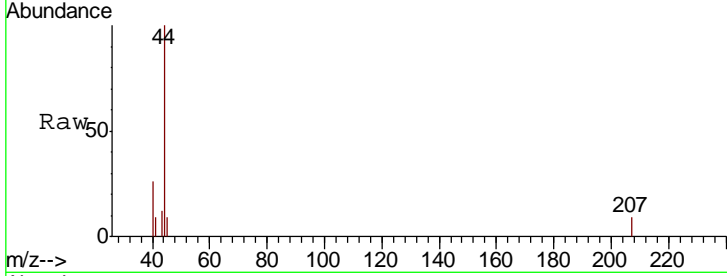




#41  
 Methacrylonitrile  
 Concen: 370.231 ug/l  
 RT: 4.70 min Scan# 413  
 Delta R.T. -0.03 min  
 Lab File: VF061575.D  
 Acq: 8 Feb 2019 23:33

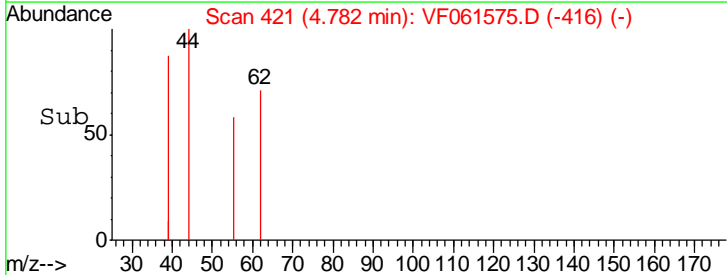
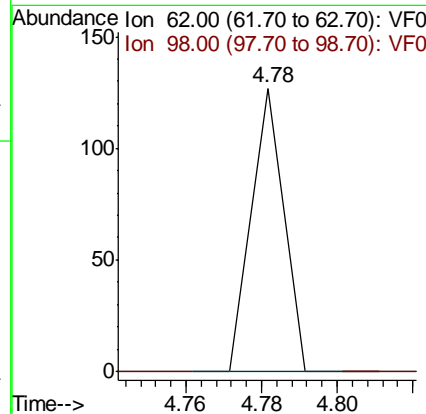
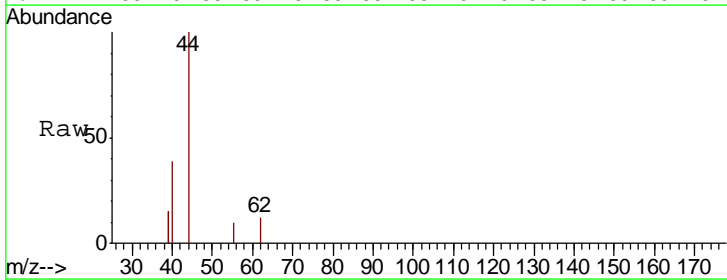
Instrument : MSVOA\_F  
 ClientSampled : OR-03-020719-BRE

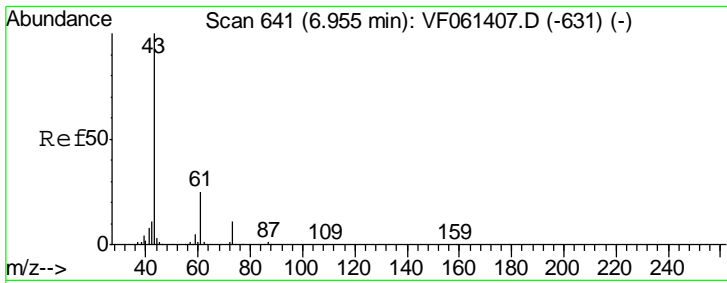
Tgt Ion	Resp	Lower	Upper
41	100		
39	0.0	43.1	64.7#
67	0.0	38.8	58.2#
52	0.0	33.2	49.8#



#42  
 1,2-Dichloroethane  
 Concen: 118.230 ug/l  
 RT: 4.78 min Scan# 421  
 Delta R.T. -0.15 min  
 Lab File: VF061575.D  
 Acq: 8 Feb 2019 23:33

Tgt Ion	Resp	Lower	Upper
62	100		
98	0.0	0.0	17.0

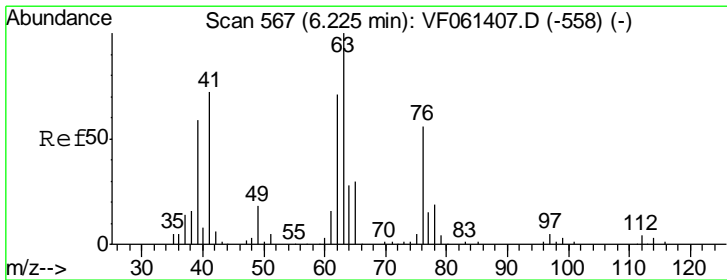
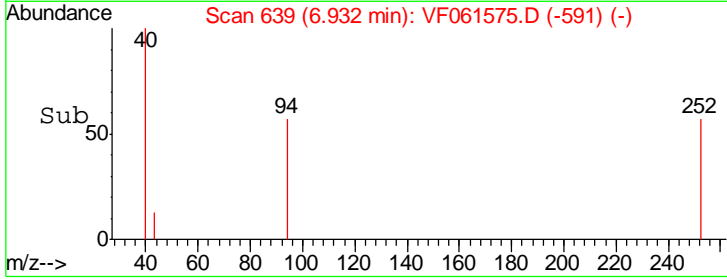
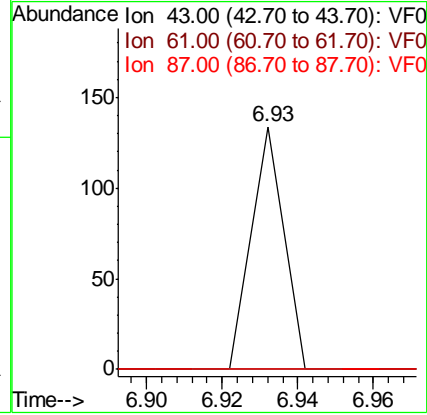
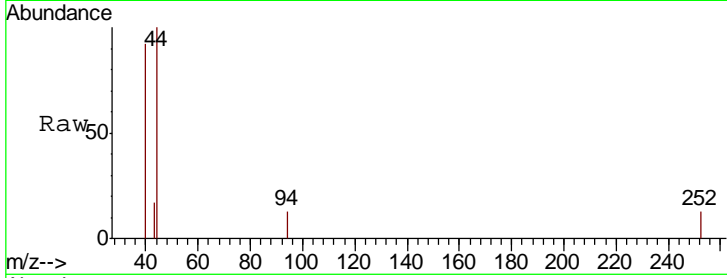




#43  
 Isopropyl Acetate  
 Concen: 196.829 ug/l  
 RT: 6.93 min Scan# 639  
 Delta R.T. -0.02 min  
 Lab File: VF061575.D  
 Acq: 8 Feb 2019 23:33

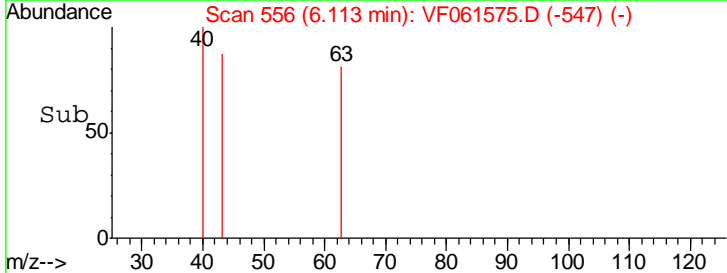
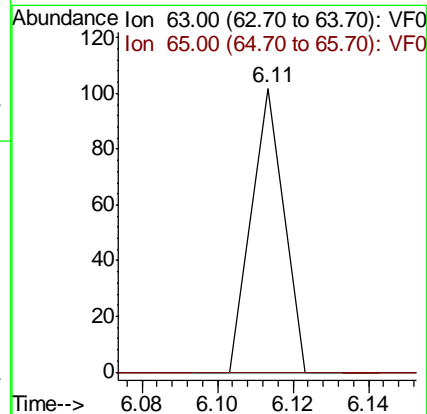
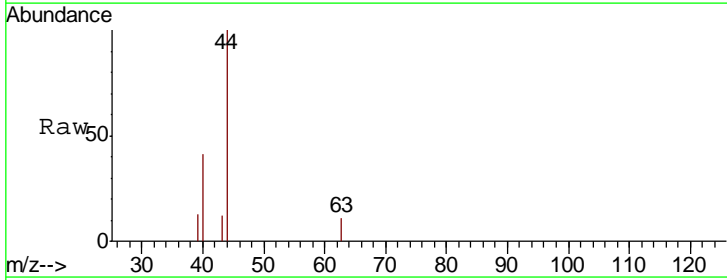
Instrument :  
 MSVOA\_F  
 ClientSampleId :  
 OR-03-020719-BRE

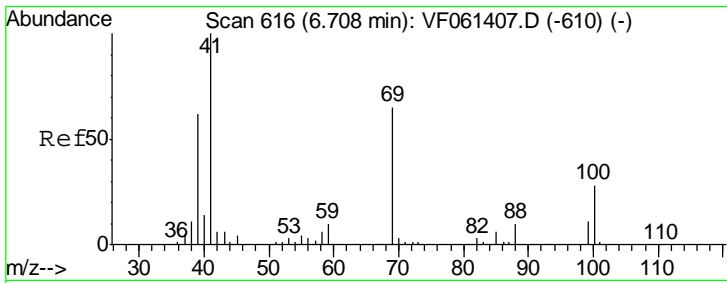
Tgt Ion	Resp	Lower	Upper
43	100		
61	0.0	20.3	30.5#
87	0.0	0.5	0.7#



#45  
 1,2-Dichloropropane  
 Concen: 128.420 ug/l  
 RT: 6.11 min Scan# 556  
 Delta R.T. -0.11 min  
 Lab File: VF061575.D  
 Acq: 8 Feb 2019 23:33

Tgt Ion	Resp	Lower	Upper
63	100		
65	0.0	24.4	36.6#

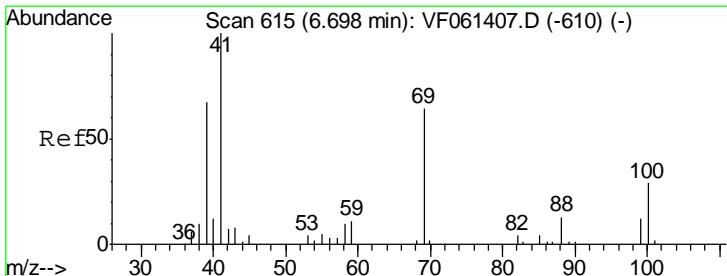
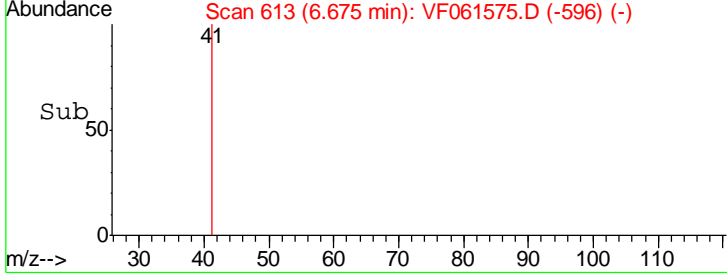
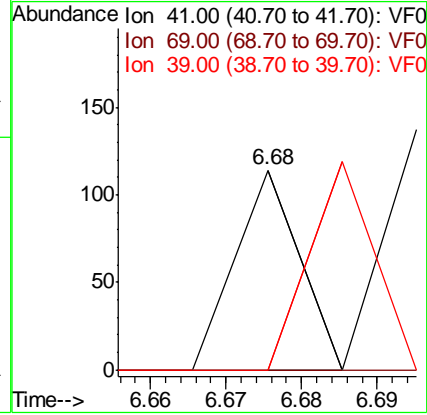
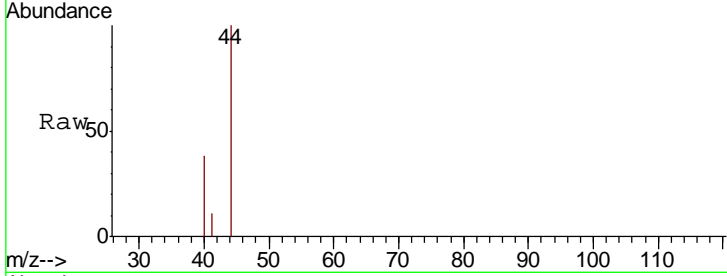




#48  
 Methyl methacrylate  
 Concen: 248.592 ug/l  
 RT: 6.68 min Scan# 613  
 Delta R.T. -0.03 min  
 Lab File: VF061575.D  
 Acq: 8 Feb 2019 23:33

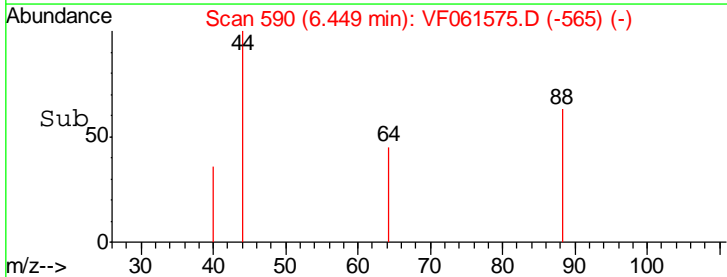
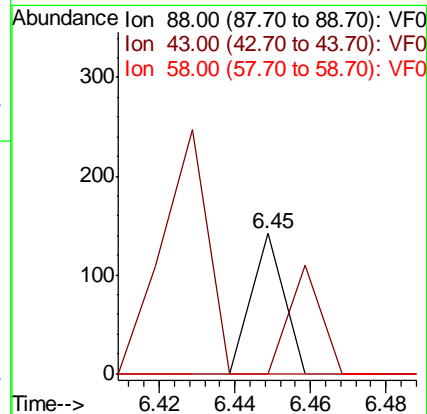
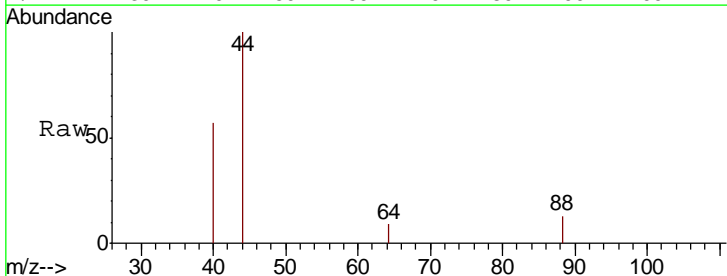
Instrument : MSVOA\_F  
 ClientSampleId : OR-03-020719-BRE

Tgt Ion	Resp	Lower	Upper
41	100		
69	0.0	51.7	77.5#
39	0.0	49.2	73.8#

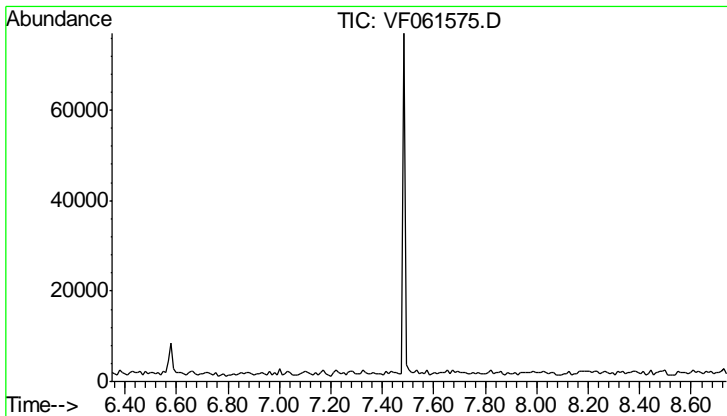


#49  
 1,4-Dioxane  
 Concen: 47904.675 ug/l  
 RT: 6.45 min Scan# 590  
 Delta R.T. -0.25 min  
 Lab File: VF061575.D  
 Acq: 8 Feb 2019 23:33

Tgt Ion	Resp	Lower	Upper
88	100		
43	0.0	55.5	83.3#
58	0.0	59.9	89.9#



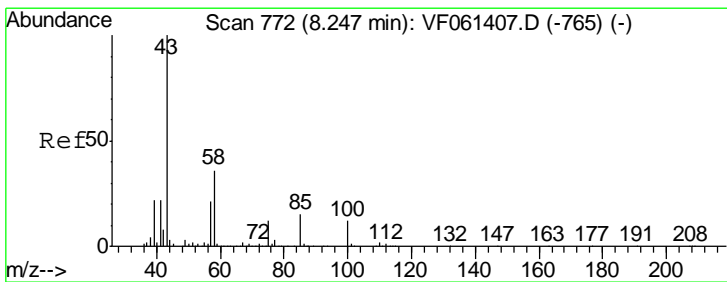
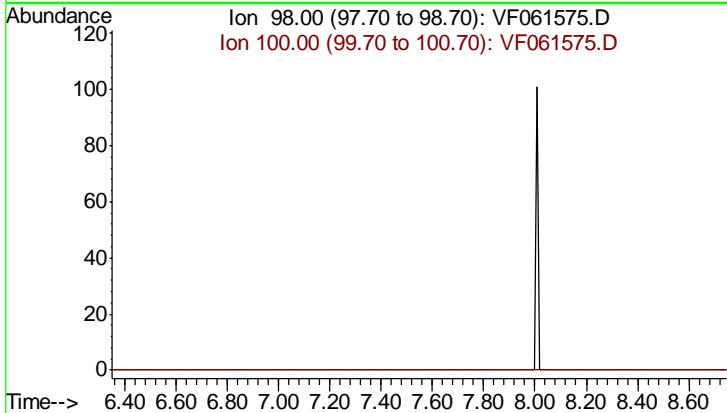




#50  
 Toluene-d8  
 Concen: 0.000 ug/l  
 Expected RT: 7.55 min  
 Lab File: VF061575.D  
 Acq: 8 Feb 2019 23:33

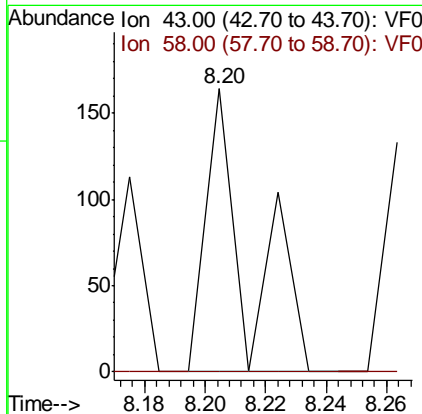
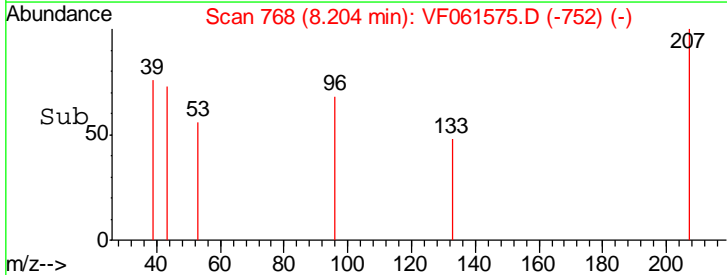
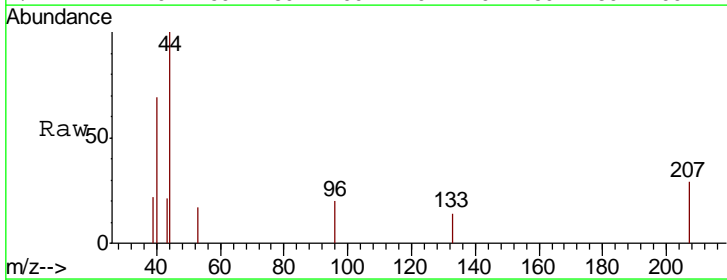
Instrument : MSVOA\_F  
 ClientSampled : OR-03-020719-BRE

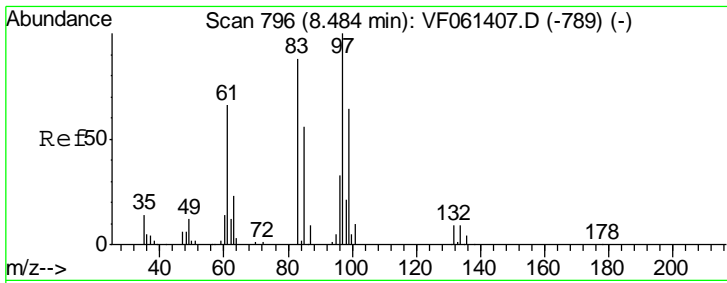
Tgt Ion: 98  
 Sig Exp Ratio  
 98 100  
 100 69.5



#51  
 4-Methyl-2-Pentanone  
 Concen: 538.862 ug/l  
 RT: 8.20 min Scan# 768  
 Delta R.T. -0.04 min  
 Lab File: VF061575.D  
 Acq: 8 Feb 2019 23:33

Tgt Ion: 43 Resp: 159  
 Ion Ratio Lower Upper  
 43 100  
 58 0.0 28.8 43.2#

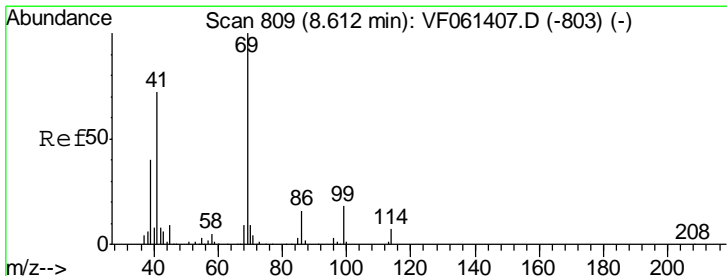
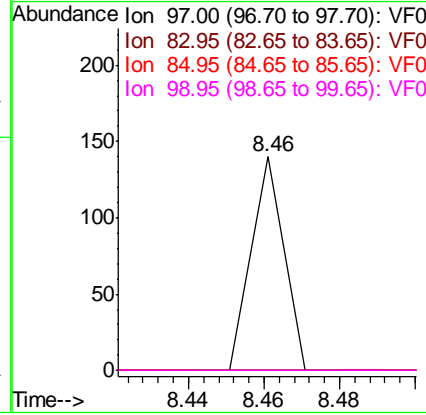
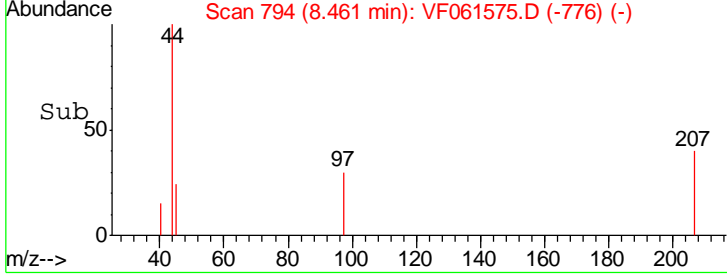
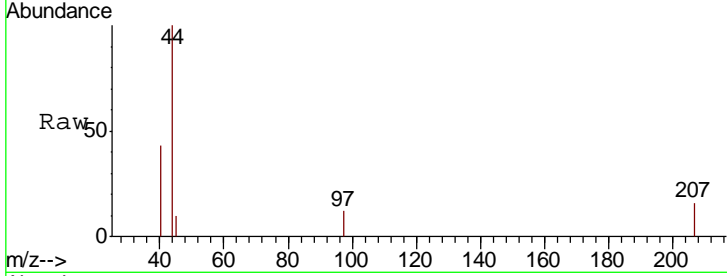




#55  
 1,1,2-Trichloroethane  
 Concen: 249.322 ug/l  
 RT: 8.46 min Scan# 794  
 Delta R.T. -0.02 min  
 Lab File: VF061575.D  
 Acq: 8 Feb 2019 23:33

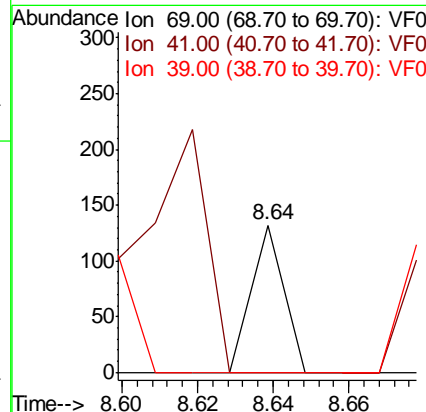
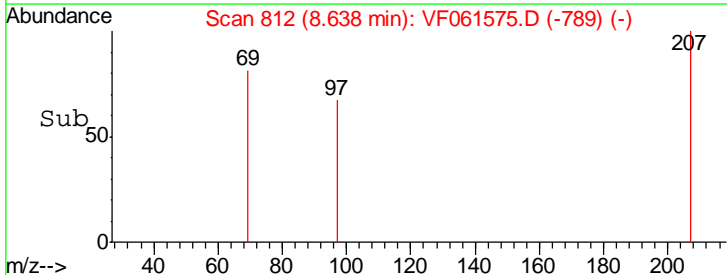
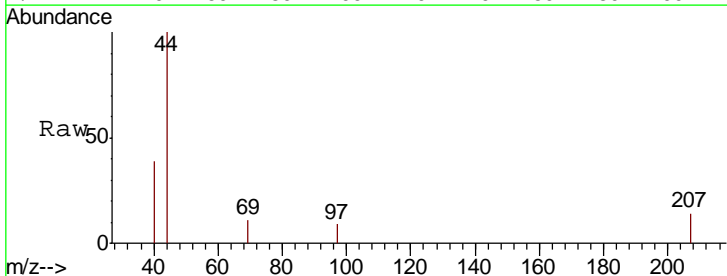
Instrument : MSVOA\_F  
 ClientSampleId : OR-03-020719-BRE

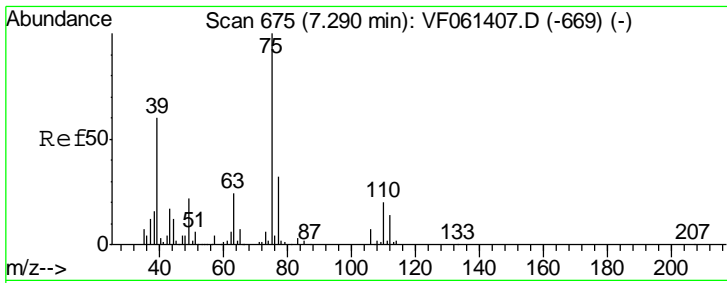
Tgt Ion	Resp	Lower	Upper
97	100		
83	0.0	70.4	105.6#
85	0.0	44.7	67.1#
99	0.0	50.8	76.2#



#56  
 Ethyl methacrylate  
 Concen: 201.390 ug/l  
 RT: 8.64 min Scan# 812  
 Delta R.T. 0.03 min  
 Lab File: VF061575.D  
 Acq: 8 Feb 2019 23:33

Tgt Ion	Resp	Lower	Upper
69	100		
41	0.0	57.5	86.3#
39	0.0	32.0	48.0#

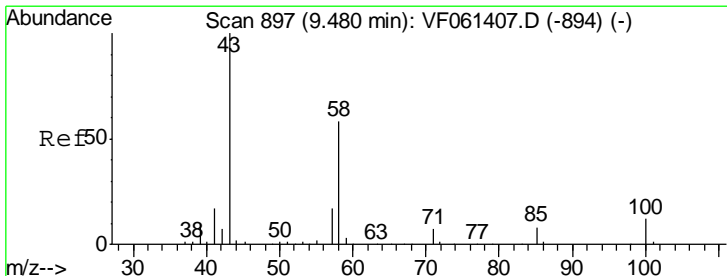
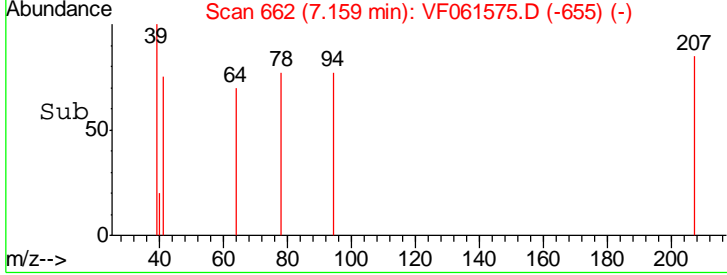
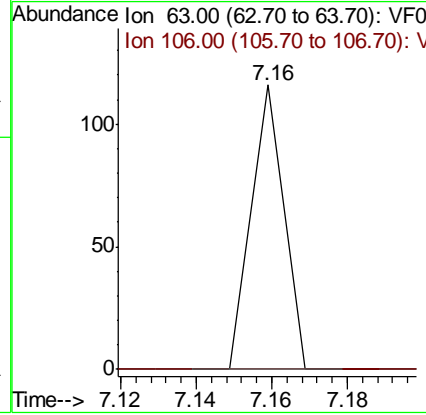
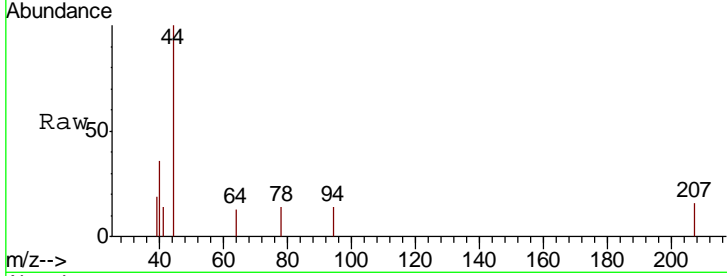




#58  
 2-Chloroethyl Vinyl ether  
 Concen: 1539.433 ug/l  
 RT: 7.16 min Scan# 662  
 Delta R.T. -0.13 min  
 Lab File: VF061575.D  
 Acq: 8 Feb 2019 23:33

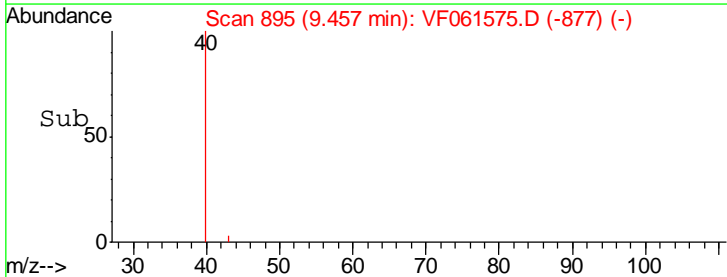
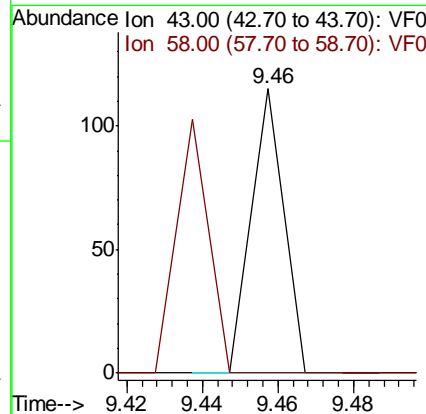
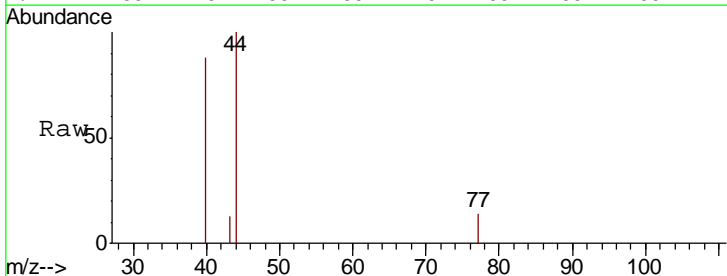
Instrument : MSVOA\_F  
 ClientSampled : OR-03-020719-BRE

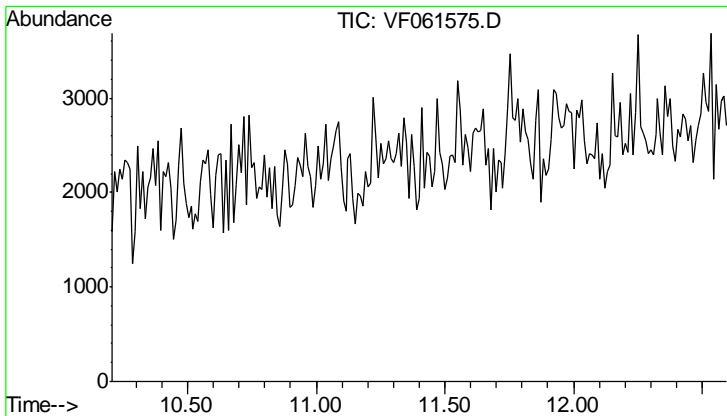
Tgt Ion: 63 Resp: 69  
 Ion Ratio Lower Upper  
 63 100  
 106 0.0 21.9 32.9#



#59  
 2-Hexanone  
 Concen: 330.489 ug/l  
 RT: 9.46 min Scan# 895  
 Delta R.T. -0.02 min  
 Lab File: VF061575.D  
 Acq: 8 Feb 2019 23:33

Tgt Ion: 43 Resp: 68  
 Ion Ratio Lower Upper  
 43 100  
 58 0.0 25.9 77.6#

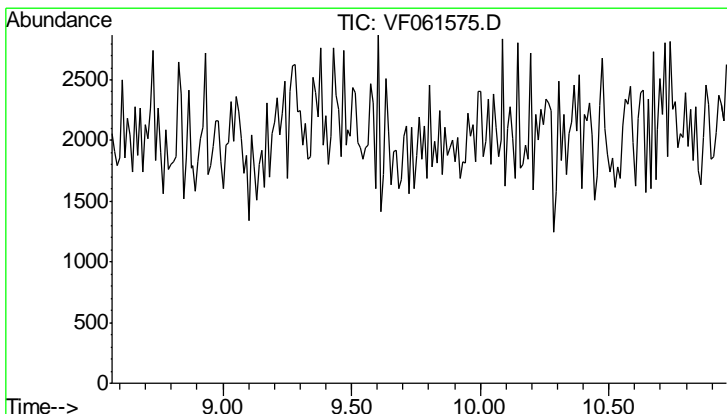
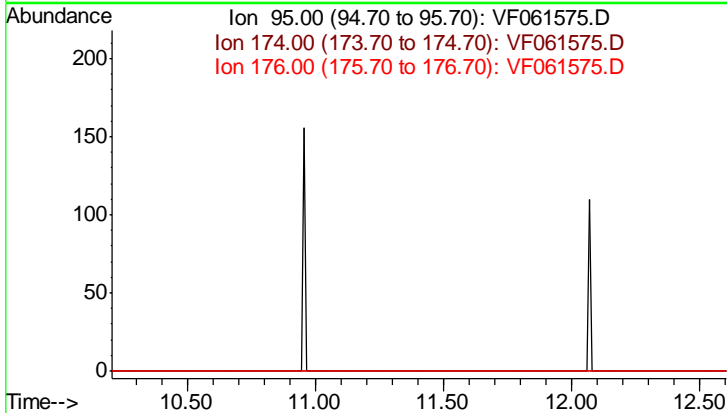




#62  
 4-Bromofluorobenzene  
 Concen: 0.000 ug/l  
 Expected RT: 11.40 min  
 Lab File: VF061575.D  
 Acq: 8 Feb 2019 23:33

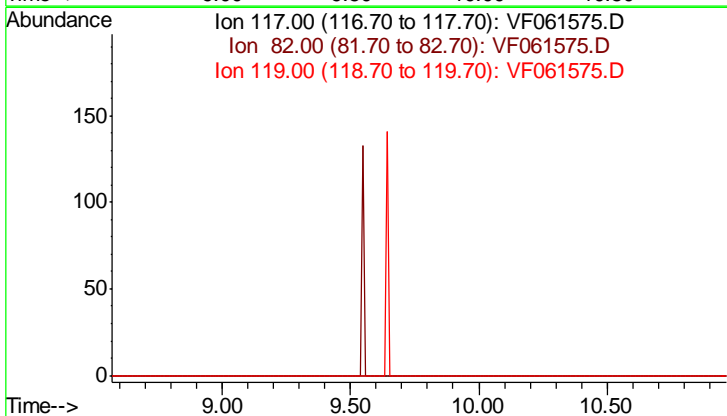
Instrument : MSVOA\_F  
 ClientSampled : OR-03-020719-BRE

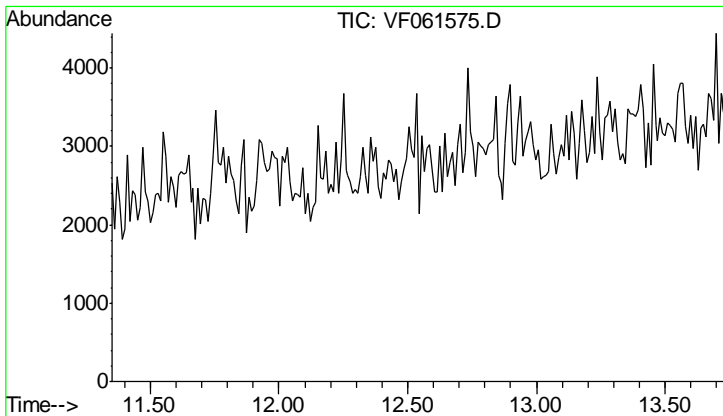
Tgt Ion	Exp Ratio
95	100
174	65.2
176	63.1



#63  
 Chlorobenzene-d5  
 Concen: 0.000 ug/l  
 Expected RT: 9.77 min  
 Lab File: VF061575.D  
 Acq: 8 Feb 2019 23:33

Tgt Ion	Exp Ratio
117	100
82	58.0
119	34.0





#72  
 1,4-Dichlorobenzene-d4  
 Concen: 0.000 ug/l  
 Expected RT: 12.55 min  
 Lab File: VF061575.D  
 Acq: 8 Feb 2019 23:33

**Instrument :**  
 MSVOA\_F  
**ClientSampled :**  
 OR-03-020719-BRE

Tgt Ion:	Exp Ratio
152	100
115	60.0
150	160.7

