

Data Path : Z:\VOASRV\HPCHEM1\MSVOA F\DATA\VF020819\  
 Data File : VF061577.D  
 Acq On : 9 Feb 2019 00:30  
 Operator : VA/AP  
 Sample : K1390-06RE  
 Misc : 5.81g/5mL/MSVOA-F/SOIL  
 ALS Vial : 20 Sample Multiplier: 1

Instrument :  
 MSVOA\_F  
 ClientSampleId :  
 SB-05(0-2)RE

Quant Time: Feb 09 06:06:44 2019  
 Quant Method : Z:\VOASRV\HPCHEM1\MSVOA\_F\METHODS\82F011519S.M  
 Quant Title : SW846 8260  
 QLast Update : Wed Jan 16 04:51:59 2019  
 Response via : Initial Calibration

Internal Standards	R.T.	QIon	Response	Conc	Units	Dev(Min)
1) Pentafluorobenzene	4.86	168	177390	50.00	ug/l	0.00
34) 1,4-Difluorobenzene	5.59	114	302012	50.00	ug/l	0.00
63) Chlorobenzene-d5	9.76	117	242736	50.00	ug/l	0.00
72) 1,4-Dichlorobenzene-d4	12.54	152	87276	50.00	ug/l	0.00

System Monitoring Compounds	R.T.	QIon	Response	Conc	Units	Dev(Min)
33) 1,2-Dichloroethane-d4	4.83	65	97700	44.61	ug/l	0.00
Spiked Amount				50.000		
Recovery				=	89.22%	
35) Dibromofluoromethane	4.10	113	103131	43.28	ug/l	0.00
Spiked Amount				50.000		
Recovery				=	86.56%	
50) Toluene-d8	7.54	98	215589	33.02	ug/l	0.00
Spiked Amount				50.000		
Recovery				=	66.04%	
62) 4-Bromofluorobenzene	11.40	95	88703	29.08	ug/l	0.00
Spiked Amount				50.000		
Recovery				=	58.16%	

Target Compounds Qvalue

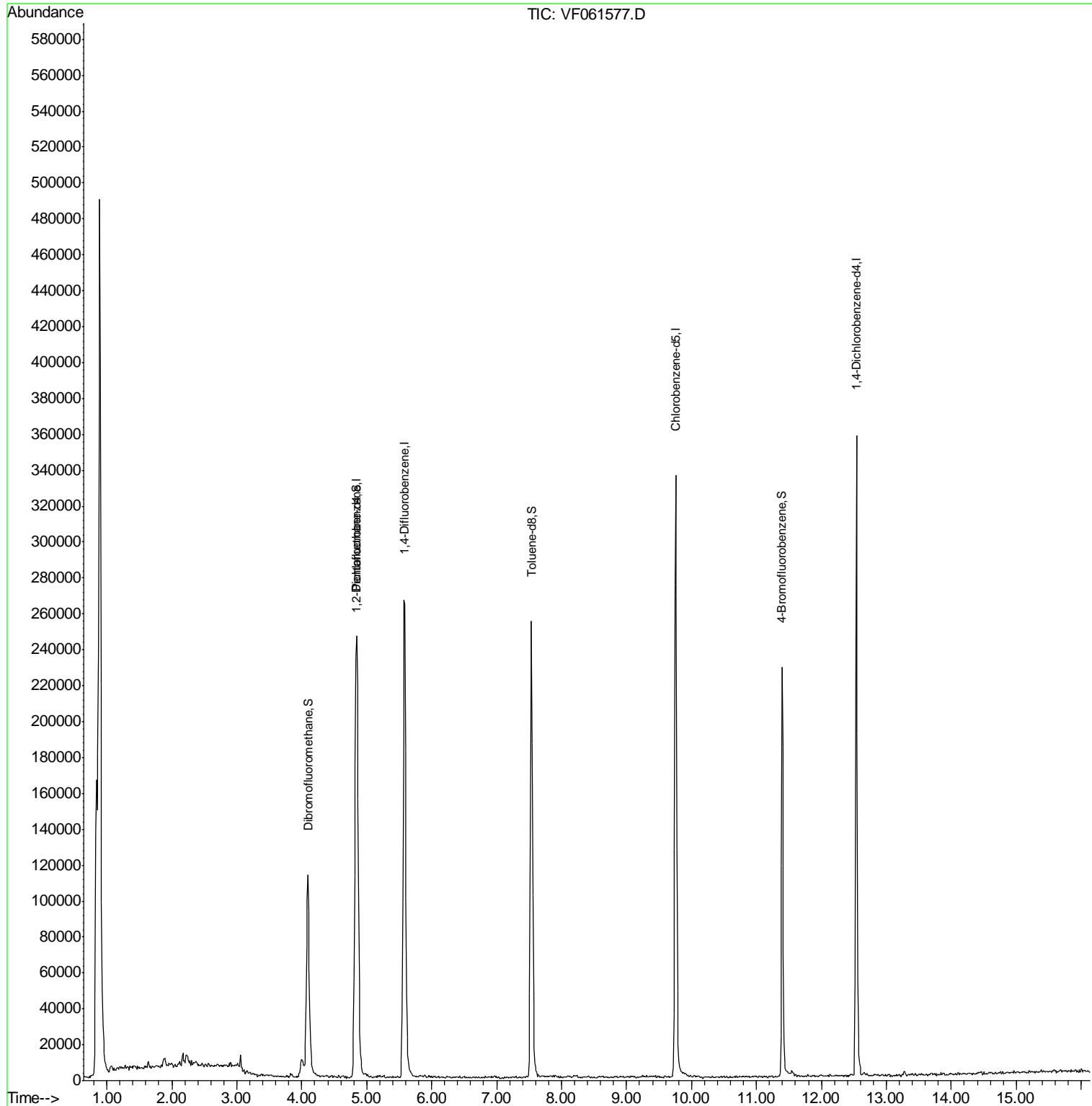
---

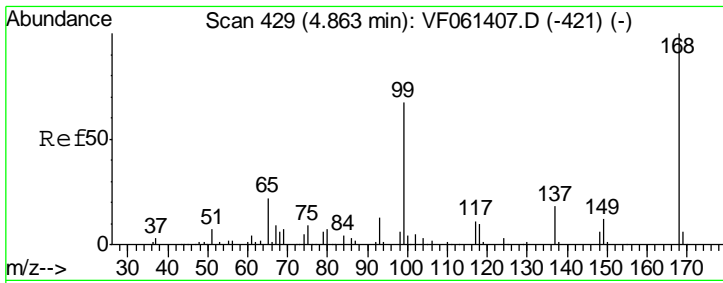
(#) = qualifier out of range (m) = manual integration (+) = signals summed

Data Path : Z:\VOASRV\HPCHEM1\MSVOA F\DATA\VF020819\  
 Data File : VF061577.D  
 Acq On : 9 Feb 2019 00:30  
 Operator : VA/AP  
 Sample : K1390-06RE  
 Misc : 5.81µ/5mL/MSVOA-F/SOIL  
 ALS Vial : 20 Sample Multiplier: 1

Instrument :  
 MSVOA\_F  
 ClientSampleId :  
 SB-05(0-2)RE

Quant Time: Feb 09 06:06:44 2019  
 Quant Method : Z:\VOASRV\HPCHEM1\MSVOA\_F\METHODS\82F011519S.M  
 Quant Title : SW846 8260  
 QLast Update : Wed Jan 16 04:51:59 2019  
 Response via : Initial Calibration

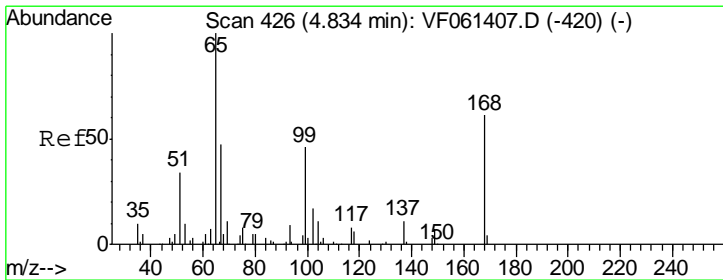
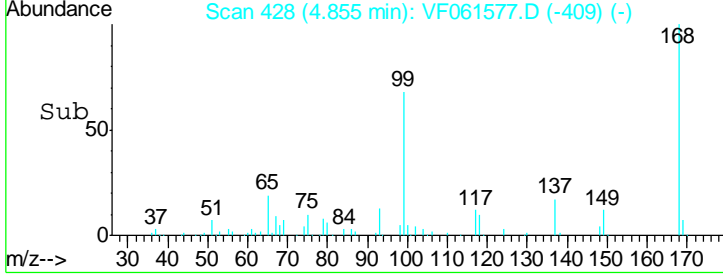
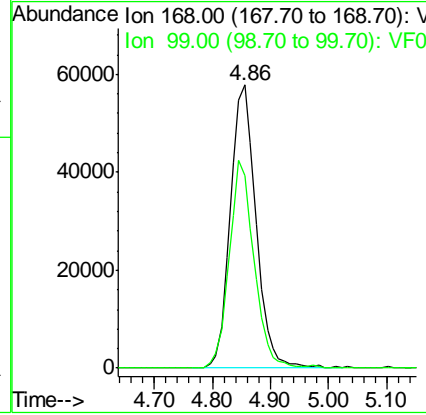
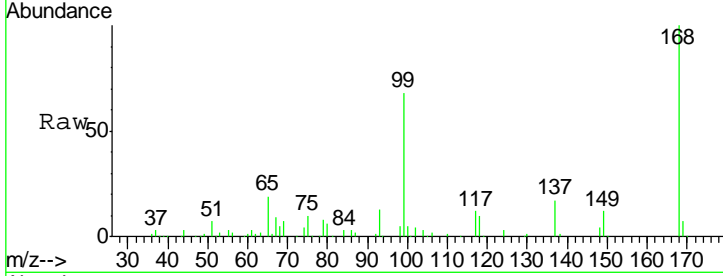




#1  
 Pentafluorobenzene  
 Concen: 50.000 ug/l  
 RT: 4.86 min Scan# 428  
 Delta R.T. -0.01 min  
 Lab File: VF061577.D  
 Acq: 9 Feb 2019 00:30

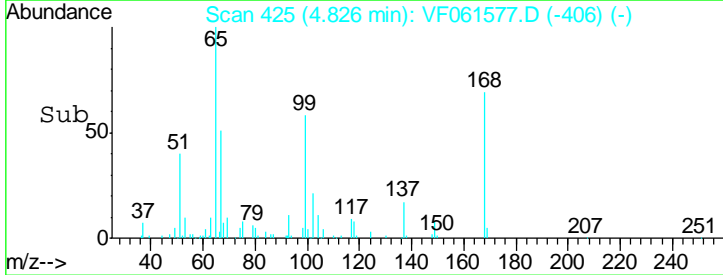
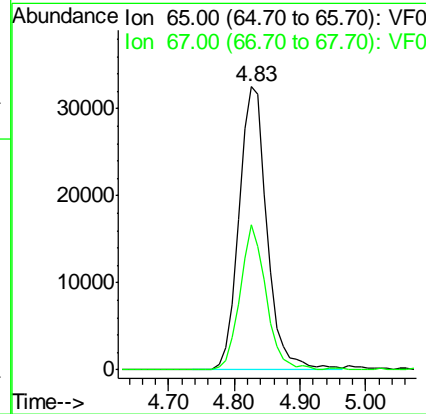
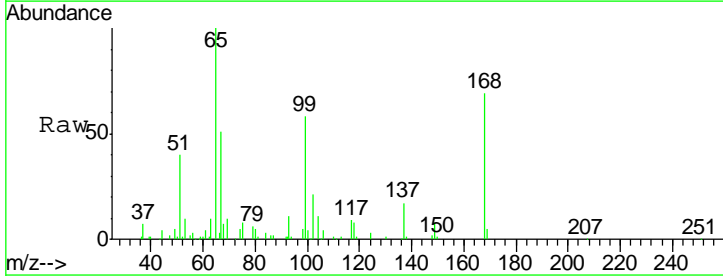
Instrument :  
 MSVOA\_F  
 ClientSampled :  
 SB-05(0-2)RE

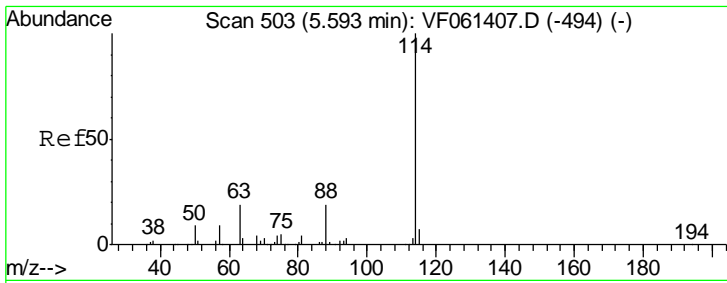
Tgt Ion: 168 Resp: 177390  
 Ion Ratio Lower Upper  
 168 100  
 99 68.1 53.5 80.3



#33  
 1,2-Dichloroethane-d4  
 Concen: 44.610 ug/l  
 RT: 4.83 min Scan# 425  
 Delta R.T. -0.01 min  
 Lab File: VF061577.D  
 Acq: 9 Feb 2019 00:30

Tgt Ion: 65 Resp: 97700  
 Ion Ratio Lower Upper  
 65 100  
 67 51.4 0.0 99.8

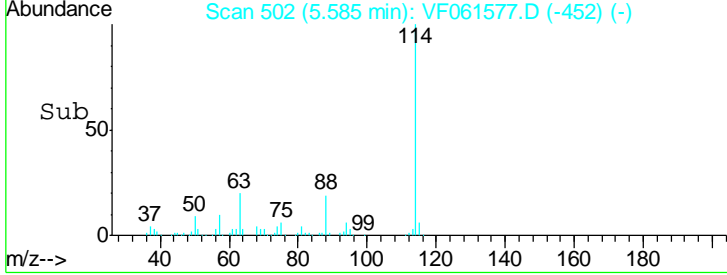
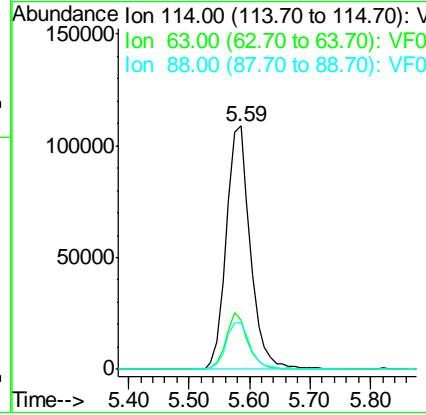
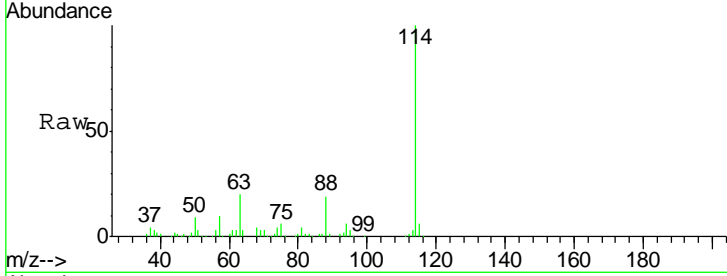




#34  
 1,4-Difluorobenzene  
 Concen: 50.000 ug/l  
 RT: 5.59 min Scan# 502  
 Delta R.T. -0.01 min  
 Lab File: VF061577.D  
 Acq: 9 Feb 2019 00:30

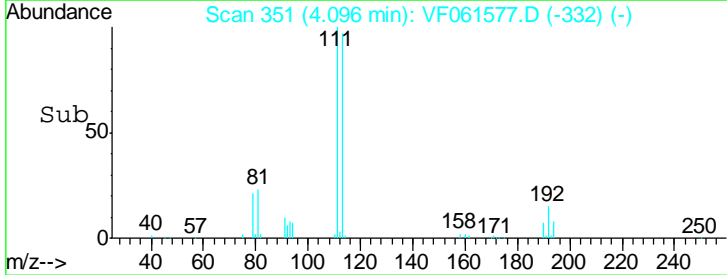
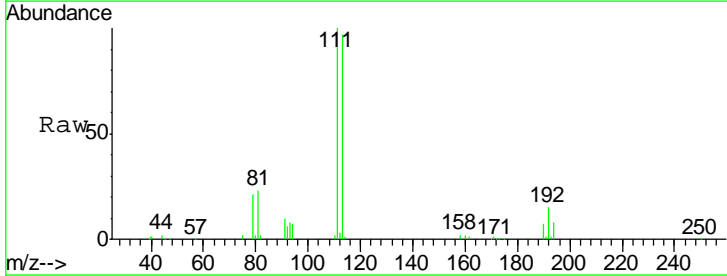
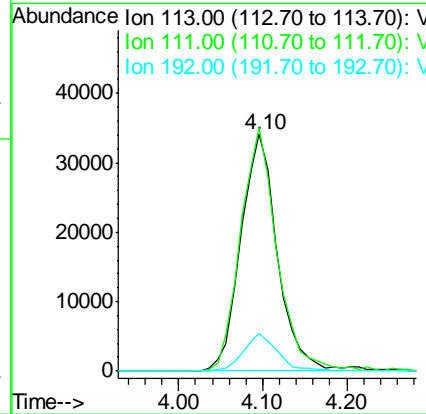
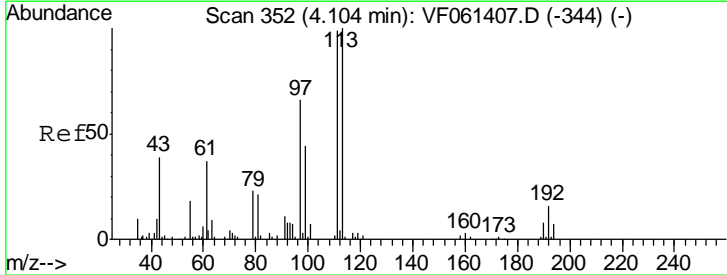
**Instrument :**  
 MSVOA\_F  
**ClientSampled :**  
 SB-05(0-2)RE

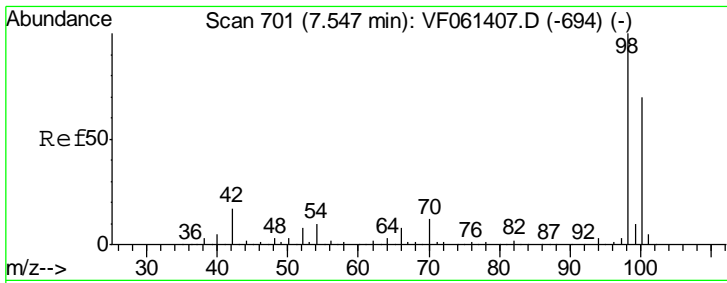
Tgt Ion	Resp	Lower	Upper
114	100		
63	19.9	0.0	39.0
88	19.0	0.0	37.4



#35  
 Dibromofluoromethane  
 Concen: 43.275 ug/l  
 RT: 4.10 min Scan# 351  
 Delta R.T. -0.01 min  
 Lab File: VF061577.D  
 Acq: 9 Feb 2019 00:30

Tgt Ion	Resp	Lower	Upper
113	100		
111	102.9	79.4	119.0
192	16.5	12.4	18.6

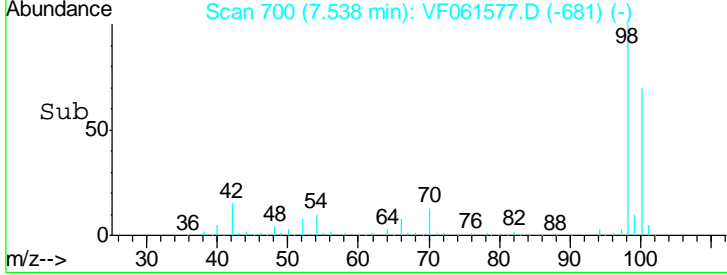
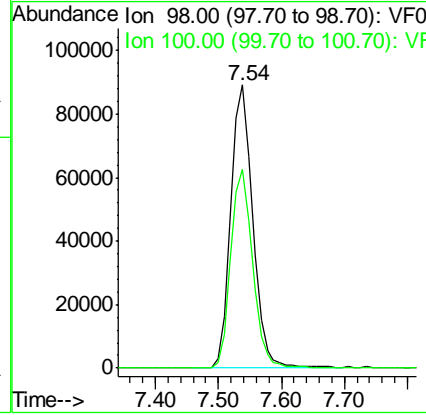
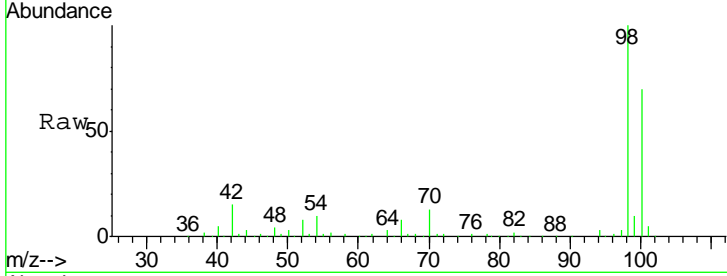




#50  
 Toluene-d8  
 Concen: 33.018 ug/l  
 RT: 7.54 min Scan# 700  
 Delta R.T. -0.01 min  
 Lab File: VF061577.D  
 Acq: 9 Feb 2019 00:30

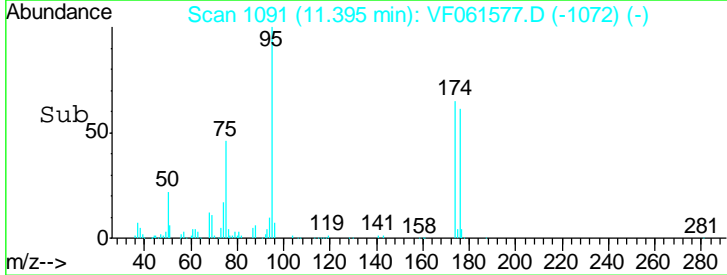
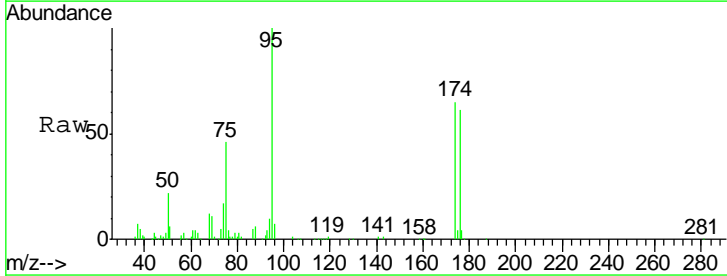
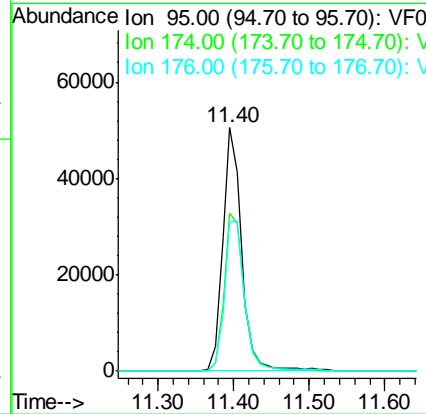
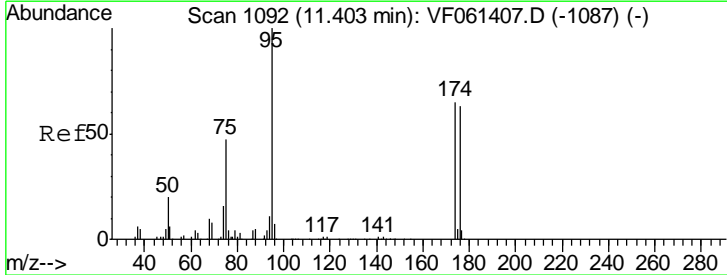
**Instrument :**  
 MSVOA\_F  
**ClientSampled :**  
 SB-05(0-2)RE

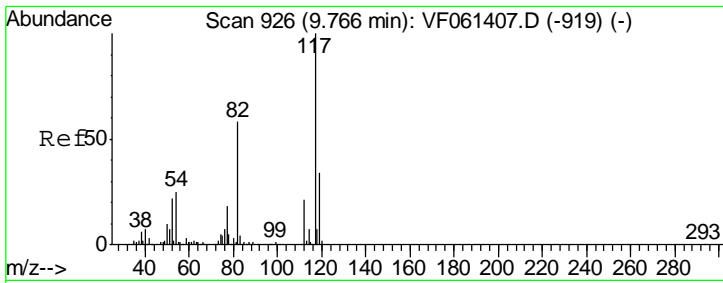
Tgt Ion: 98 Resp: 21589  
 Ion Ratio Lower Upper  
 98 100  
 100 70.2 55.6 83.4



#62  
 4-Bromofluorobenzene  
 Concen: 29.076 ug/l  
 RT: 11.40 min Scan# 1091  
 Delta R.T. -0.01 min  
 Lab File: VF061577.D  
 Acq: 9 Feb 2019 00:30

Tgt Ion: 95 Resp: 88703  
 Ion Ratio Lower Upper  
 95 100  
 174 65.0 0.0 130.4  
 176 61.0 0.0 126.2

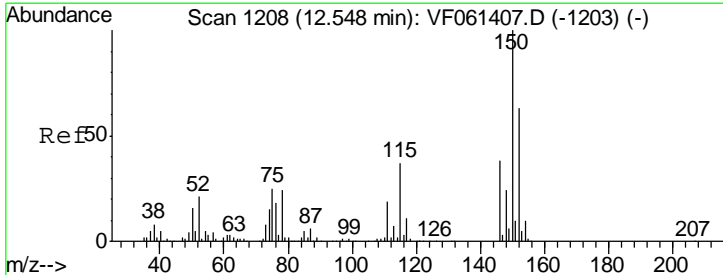
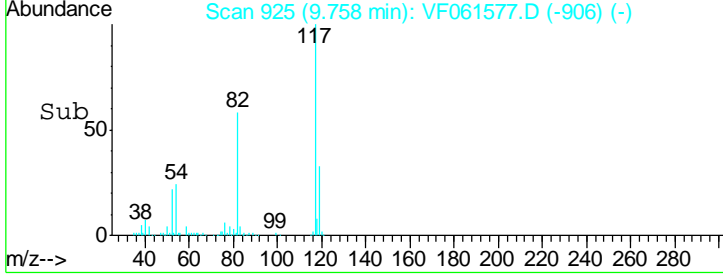
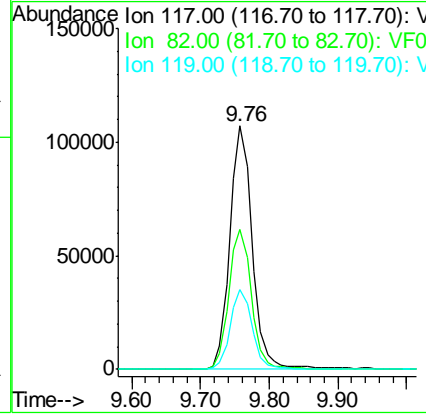
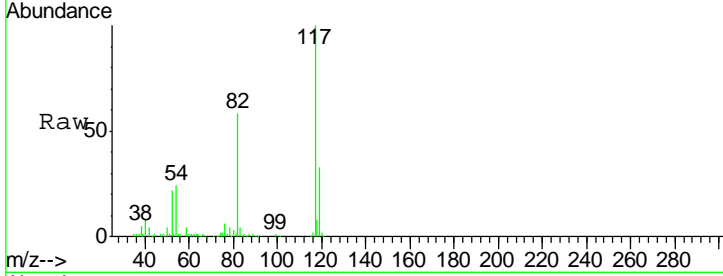




#63  
 Chlorobenzene-d5  
 Concen: 50.000 ug/l  
 RT: 9.76 min Scan# 925  
 Delta R.T. -0.01 min  
 Lab File: VF061577.D  
 Acq: 9 Feb 2019 00:30

**Instrument :**  
 MSVOA\_F  
**ClientSampled :**  
 SB-05(0-2)RE

Tgt Ion	Resp	Lower	Upper
117	242736		
82	57.7	46.4	69.6
119	32.9	27.2	40.8



#72  
 1,4-Dichlorobenzene-d4  
 Concen: 50.000 ug/l  
 RT: 12.54 min Scan# 1207  
 Delta R.T. -0.01 min  
 Lab File: VF061577.D  
 Acq: 9 Feb 2019 00:30

Tgt Ion	Resp	Lower	Upper
152	87276		
115	62.9	30.0	90.0
150	153.7	0.0	321.4

