

Data Path : Z:\VOASRV\HPCHEM1\MSVOA F\DATA\VF021119\
 Data File : VF061598.D
 Acq On : 11 Feb 2019 21:00
 Operator : VA/AP
 Sample : K1458-06RE
 Misc : 5.00µ/5mL/MSVOA-F/SOIL
 ALS Vial : 19 Sample Multiplier: 1

Instrument :
 MSVOA_F
 ClientSampled :

Quant Time: Feb 12 03:29:02 2019
 Quant Method : Z:\VOASRV\HPCHEM1\MSVOA_F\METHODS\82F011519S.M
 Quant Title : SW846 8260
 QLast Update : Wed Jan 16 04:51:59 2019
 Response via : Initial Calibration

Internal Standards	R.T.	QIon	Response	Conc	Units	Dev(Min)
1) Pentafluorobenzene	4.85	168	2076	50.00	µg/l	-0.01
34) 1,4-Difluorobenzene	5.57	114	2605	50.00	µg/l	-0.02
63) Chlorobenzene-d5	9.76	117	1763	50.00	µg/l	0.00
72) 1,4-Dichlorobenzene-d4	12.53	152	244	50.00	µg/l	-0.01

System Monitoring Compounds

33) 1,2-Dichloroethane-d4	4.83	65	307	11.98	µg/l	0.00
Spiked Amount	50.000		Recovery	=	23.96%	
35) Dibromofluoromethane	4.14	113	62	3.02	µg/l	0.04
Spiked Amount	50.000		Recovery	=	6.04%	
50) Toluene-d8	7.53	98	2362	41.94	µg/l	-0.01
Spiked Amount	50.000		Recovery	=	83.88%	
62) 4-Bromofluorobenzene	11.32	95	71	2.70	µg/l	-0.08
Spiked Amount	50.000		Recovery	=	5.40%	

Target Compounds

						Qvalue
2) Dichlorodifluoromethane	0.98	85	66	1.618	µg/l #	38
3) Chloromethane	1.12	50	331	11.067	µg/l #	44
4) Vinyl Chloride	1.14	62	87	3.270	µg/l #	1
5) Bromomethane	1.32	94	336	19.367	µg/l #	2
6) Chloroethane	1.37	64	66	5.598	µg/l #	1
7) Trichlorofluoromethane	1.47	101	65	1.257	µg/l #	19
8) Diethyl Ether	1.57	74	59	8.902	µg/l	68
9) 1,1,2-Trichlorotrifluoroet	1.91	101	78	3.139	µg/l #	20
10) Methyl Iodide	1.97	142	77	1.999	µg/l #	27
11) Tert butyl alcohol	2.52	59	85	78.348	µg/l #	64
12) 1,1-Dichloroethene	1.78	96	81	4.387	µg/l #	1
13) Acrolein	2.03	56	318	336.563	µg/l	86
14) Allyl chloride	2.04	41	304	2.099	µg/l #	73
15) Acrylonitrile	2.95	53	809	291.112	µg/l #	14
16) Acetone	2.26	43	851	165.504	µg/l #	39
17) Carbon Disulfide	1.81	76	64	1.112	µg/l #	69
18) Methyl Acetate	2.31	43	1085	106.403	µg/l #	61
19) Methyl tert-butyl Ether	2.43	73	72	1.740	µg/l #	59
20) Methylene Chloride	2.17	84	98	3.998	µg/l #	1
21) trans-1,2-Dichloroethene	2.34	96	74	3.643	µg/l #	1
22) Diisopropyl ether	2.83	45	367	5.585	µg/l #	1
23) Vinyl Acetate	3.17	43	664	25.875	µg/l #	78
24) 1,1-Dichloroethane	2.88	63	78	1.891	µg/l #	1
25) 2-Butanone	4.32	43	67	7.836	µg/l #	57
26) 2,2-Dichloropropane	3.60	77	62	2.447	µg/l #	61
27) cis-1,2-Dichloroethene	3.42	96	63	2.101	µg/l	1
29) Tetrahydrofuran	4.08	42	74	20.098	µg/l #	38
31) Cyclohexane	3.67	56	72	1.748	µg/l #	13
32) 1,1,1-Trichloroethane	3.99	97	66	1.617	µg/l #	22
36) 1,1-Dichloropropene	4.13	75	91	3.013	µg/l #	44
37) Ethyl Acetate	4.07	43	143	11.844	µg/l #	5
41) Methacrylonitrile	4.77	41	89	13.854	µg/l #	45
42) 1,2-Dichloroethane	4.92	62	64	2.672	µg/l	76
43) Isopropyl Acetate	6.94	43	140	9.239	µg/l #	51

Data Path : Z:\VOASRV\HPCHEM1\MSVOA F\DATA\VF021119\
 Data File : VF061598.D
 Acq On : 11 Feb 2019 21:00
 Operator : VA/AP
 Sample : K1458-06RE
 Misc : 5.00µ/5mL/MSVOA-F/SOIL
 ALS Vial : 19 Sample Multiplier: 1

Instrument :
 MSVOA_F
 ClientSampleId :

Quant Time: Feb 12 03:29:02 2019
 Quant Method : Z:\VOASRV\HPCHEM1\MSVOA_F\METHODS\82F011519S.M
 Quant Title : SW846 8260
 QLast Update : Wed Jan 16 04:51:59 2019
 Response via : Initial Calibration

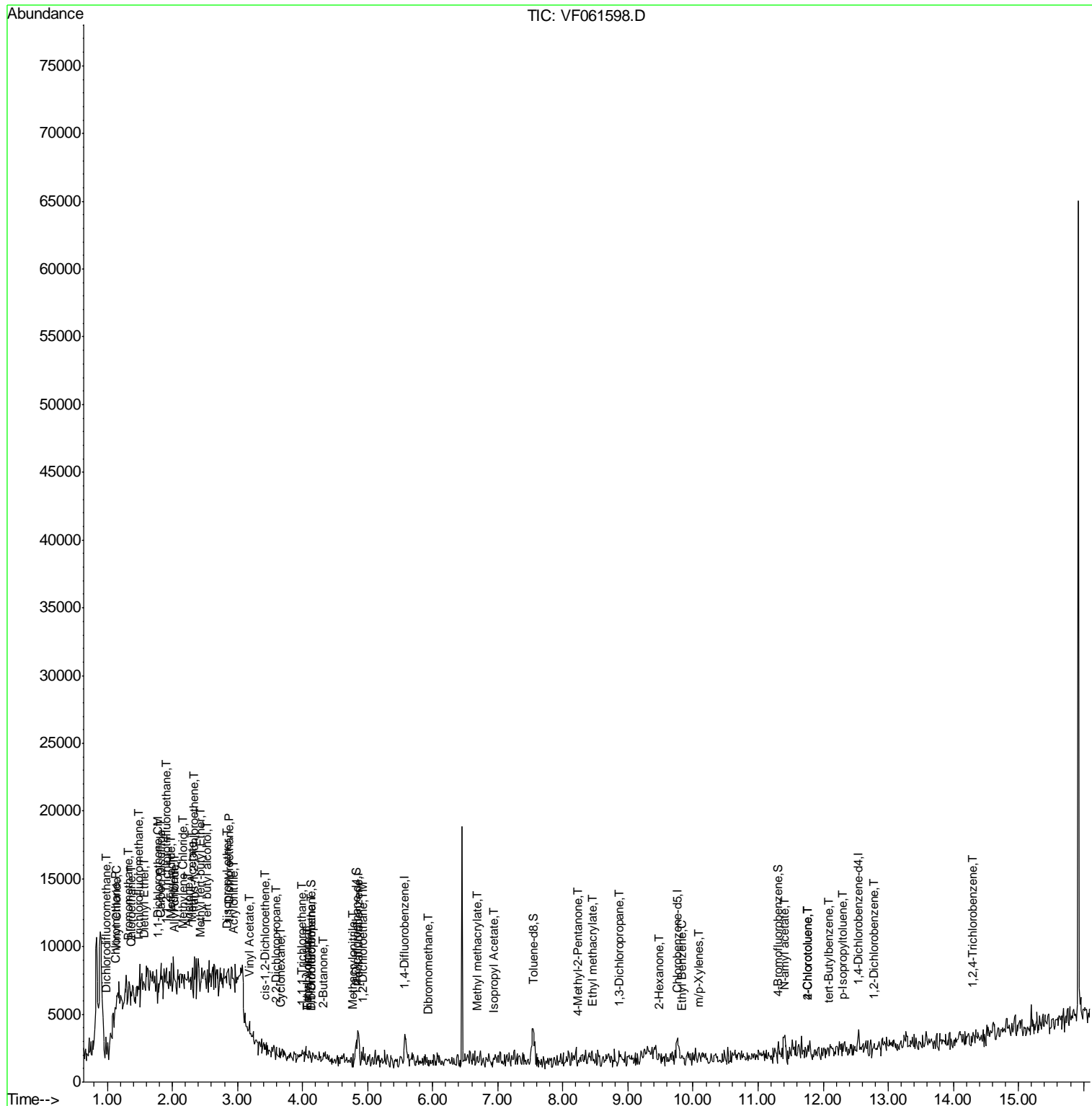
Internal Standards	R.T.	QIon	Response	Conc	Units	Dev(Min)
46) Dibromomethane	5.93	93	89	7.588	µg/l #	6
48) Methyl methacrylate	6.68	41	88	8.648	µg/l #	19
51) 4-Methyl-2-Pentanone	8.23	43	63	5.655	µg/l #	39
56) Ethyl methacrylate	8.46	69	64	4.377	µg/l #	21
57) 1,3-Dichloropropane	8.86	76	63	2.674	µg/l #	43
59) 2-Hexanone	9.48	43	190	24.459	µg/l	100
67) Ethyl Benzene	9.84	91	67	1.023	µg/l #	46
68) m/p-Xylenes	10.09	106	88	3.735	µg/l #	1
74) N-amyl acetate	11.40	43	242	51.570	µg/l #	47
79) 2-Chlorotoluene	11.76	91	72	5.229	µg/l #	45
82) 4-Chlorotoluene	11.76	91	72	5.182	µg/l #	43
83) tert-Butylbenzene	12.08	119	66	3.982	µg/l #	28
86) p-Isopropyltoluene	12.30	119	72	3.896	µg/l #	50
91) 1,2-Dichlorobenzene	12.77	146	64	8.163	µg/l #	24
93) 1,2,4-Trichlorobenzene	14.31	180	62	11.289	µg/l #	11

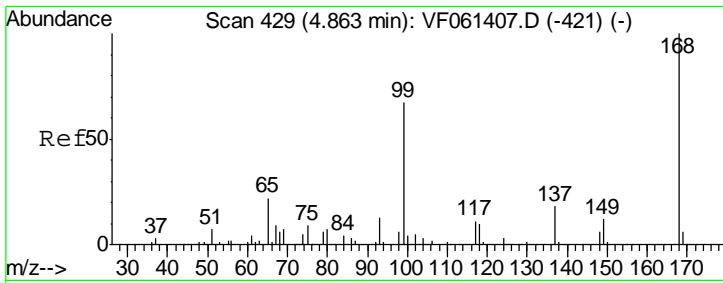
(#) = qualifier out of range (m) = manual integration (+) = signals summed

Data Path : Z:\VOASRV\HPCHEM1\MSVOA F\DATA\VF021119\
 Data File : VF061598.D
 Acq On : 11 Feb 2019 21:00
 Operator : VA/AP
 Sample : K1458-06RE
 Misc : 5.00µ/5mL/MSVOA-F/SOIL
 ALS Vial : 19 Sample Multiplier: 1

Instrument :
 MSVOA_F
 ClientSampleId :

Quant Time: Feb 12 03:29:02 2019
 Quant Method : Z:\VOASRV\HPCHEM1\MSVOA_F\METHODS\82F011519S.M
 Quant Title : SW846 8260
 QLast Update : Wed Jan 16 04:51:59 2019
 Response via : Initial Calibration

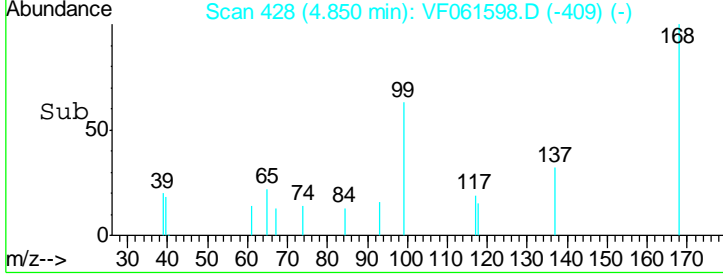
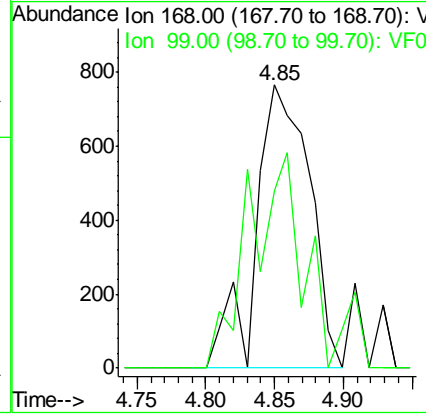
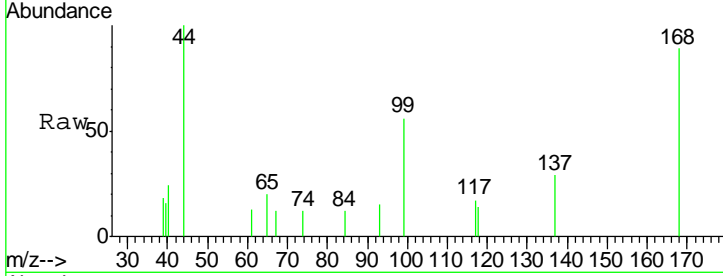




#1
 Pentafluorobenzene
 Concen: 50.000 ug/l
 RT: 4.85 min Scan# 428
 Delta R.T. -0.01 min
 Lab File: VF061598.D
 Acq: 11 Feb 2019 21:00

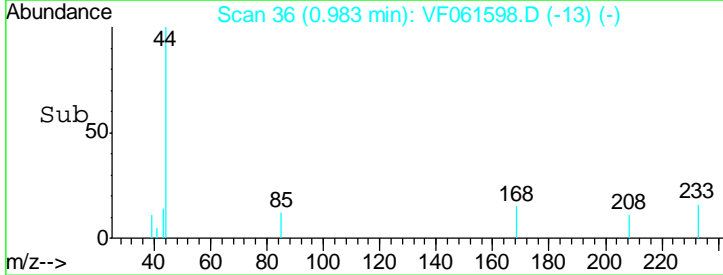
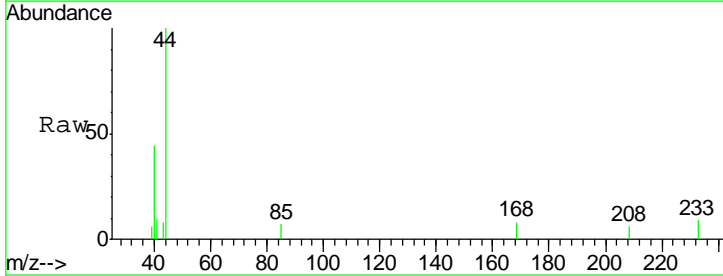
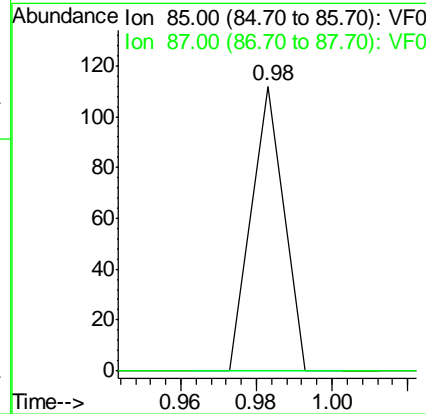
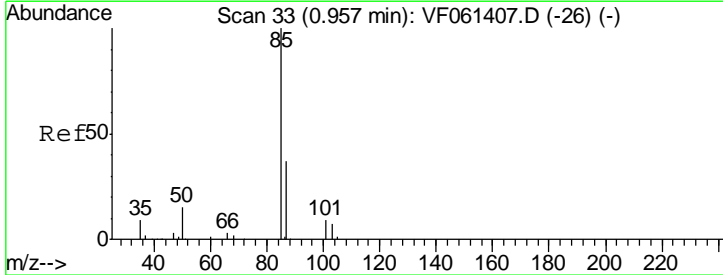
Instrument :
 MSVOA_F
 ClientSampled :

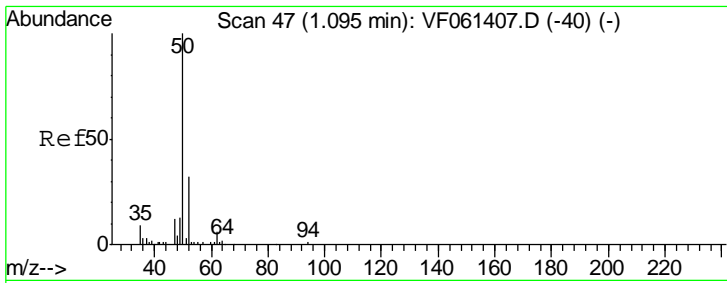
Tgt Ion: 168 Resp: 2076
 Ion Ratio Lower Upper
 168 100
 99 62.7 53.5 80.3



#2
 Dichlorodifluoromethane
 Concen: 1.618 ug/l
 RT: 0.98 min Scan# 36
 Delta R.T. 0.03 min
 Lab File: VF061598.D
 Acq: 11 Feb 2019 21:00

Tgt Ion: 85 Resp: 66
 Ion Ratio Lower Upper
 85 100
 87 0.0 18.4 55.0#

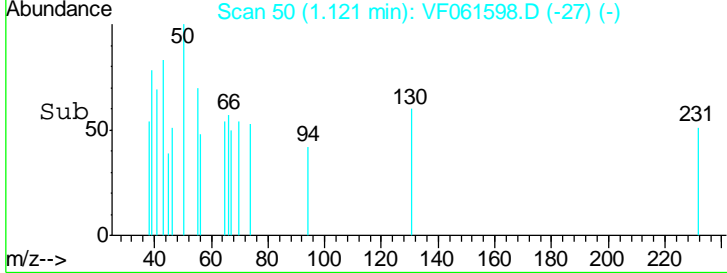
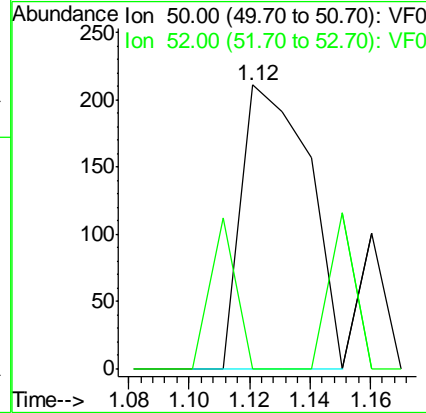
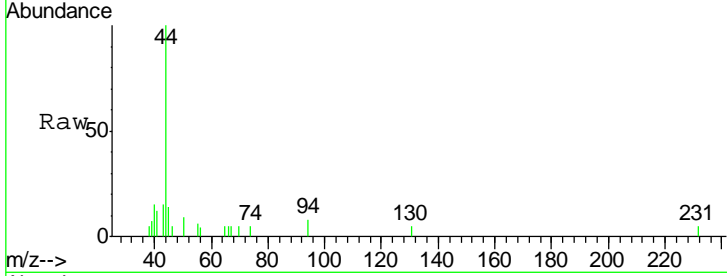




#3
 Chloromethane
 Concen: 11.067 ug/l
 RT: 1.12 min Scan# 50
 Delta R.T. 0.03 min
 Lab File: VF061598.D
 Acq: 11 Feb 2019 21:00

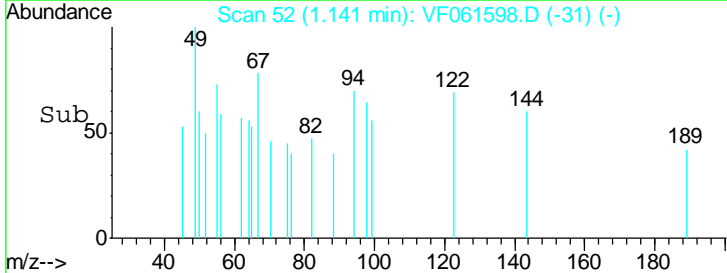
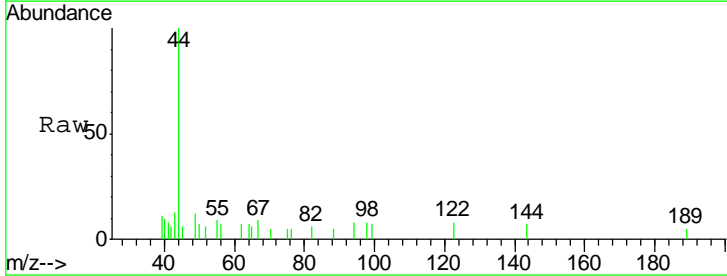
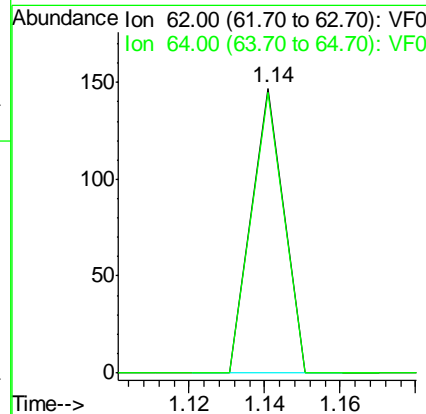
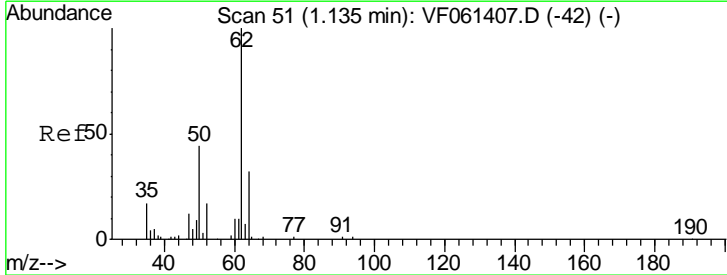
Instrument : MSVOA_F
 ClientSampled :

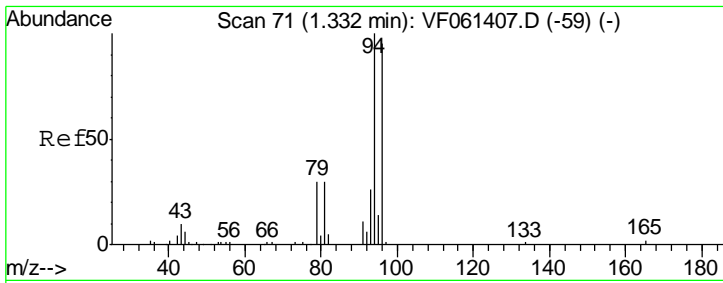
Tgt Ion: 50 Resp: 331
 Ion Ratio Lower Upper
 50 100
 52 0.0 24.6 36.8#



#4
 Vinyl Chloride
 Concen: 3.270 ug/l
 RT: 1.14 min Scan# 52
 Delta R.T. 0.01 min
 Lab File: VF061598.D
 Acq: 11 Feb 2019 21:00

Tgt Ion: 62 Resp: 87
 Ion Ratio Lower Upper
 62 100
 64 98.6 25.6 38.4#

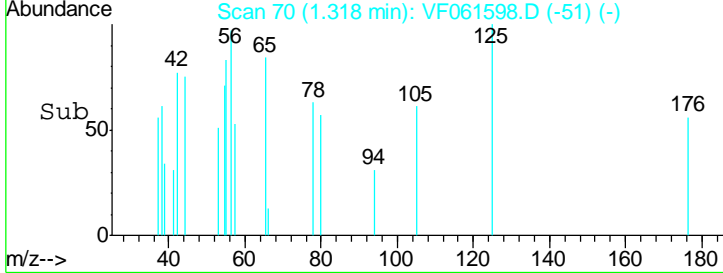
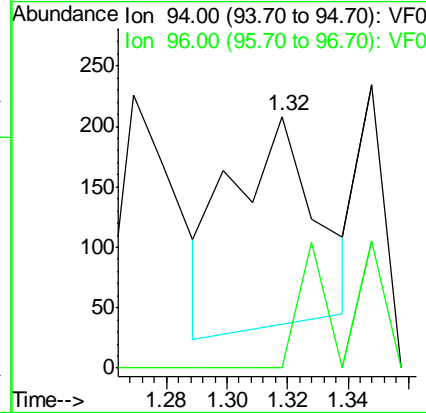
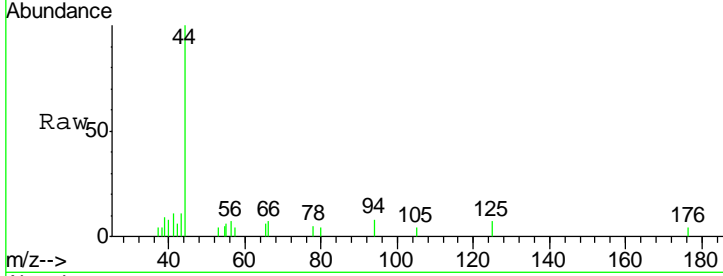




#5
 Bromomethane
 Concen: 19.367 ug/l
 RT: 1.32 min Scan# 70
 Delta R.T. -0.01 min
 Lab File: VF061598.D
 Acq: 11 Feb 2019 21:00

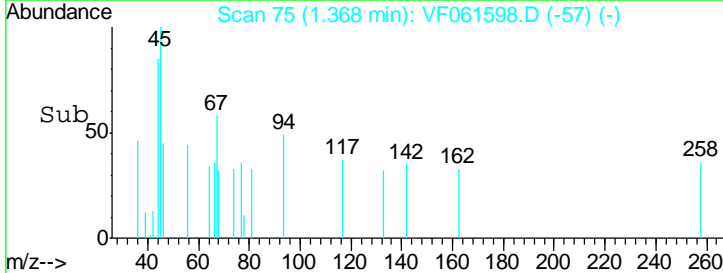
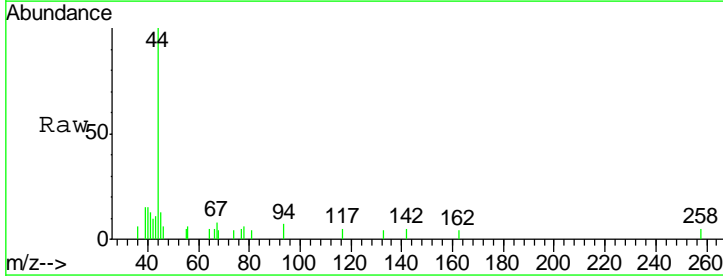
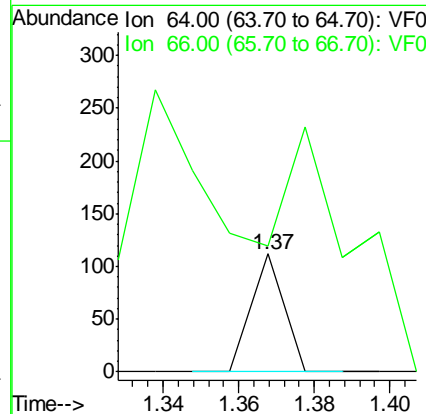
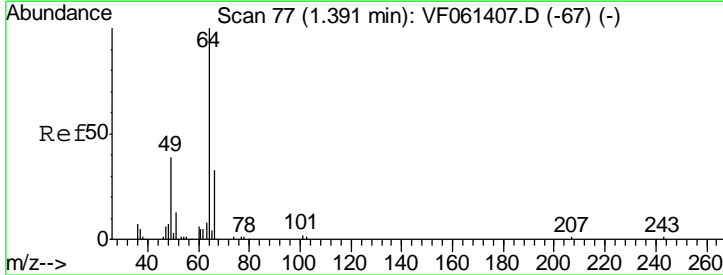
Instrument :
 MSVOA_F
 ClientSampled :

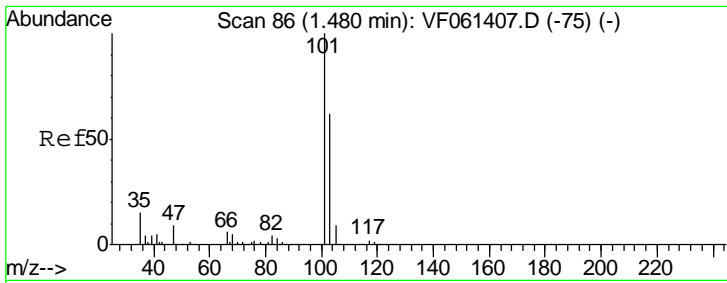
Tgt Ion: 94 Resp: 336
 Ion Ratio Lower Upper
 94 100
 96 0.0 76.0 114.0#



#6
 Chloroethane
 Concen: 5.598 ug/l
 RT: 1.37 min Scan# 75
 Delta R.T. -0.02 min
 Lab File: VF061598.D
 Acq: 11 Feb 2019 21:00

Tgt Ion: 64 Resp: 66
 Ion Ratio Lower Upper
 64 100
 66 107.1 26.6 40.0#

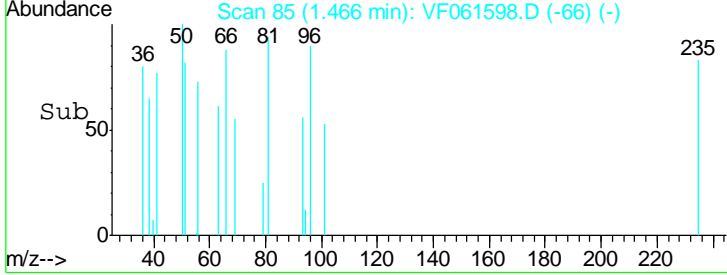
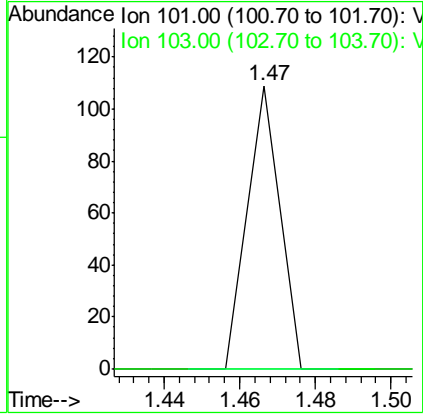
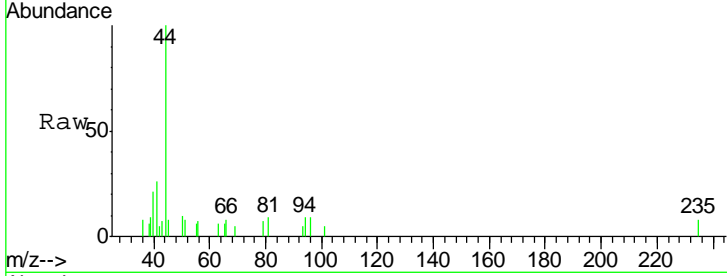




#7
 Trichlorofluoromethane
 Concen: 1.257 ug/l
 RT: 1.47 min Scan# 85
 Delta R.T. -0.01 min
 Lab File: VF061598.D
 Acq: 11 Feb 2019 21:00

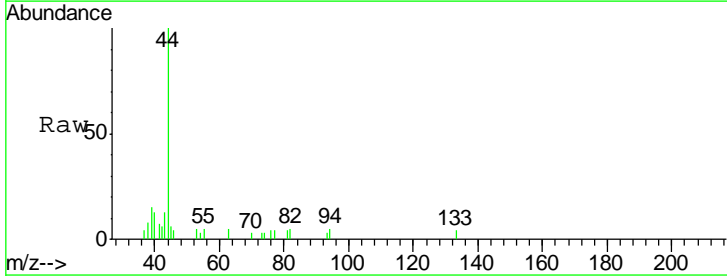
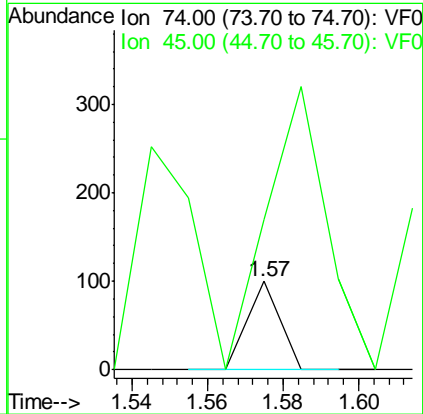
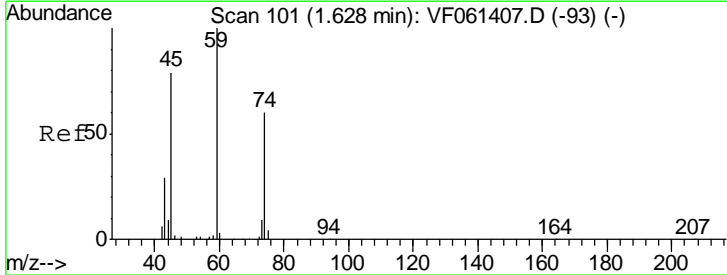
Instrument :
 MSVOA_F
 ClientSampleId :

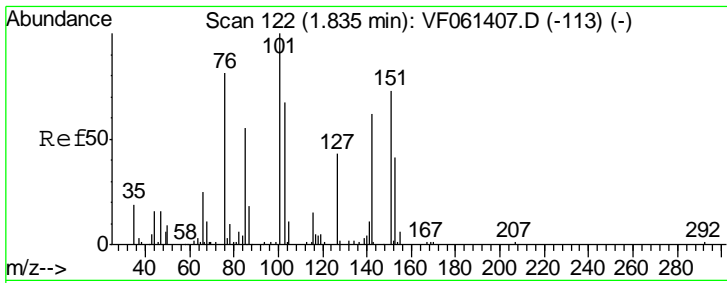
Tgt Ion: 101 Resp: 65
 Ion Ratio Lower Upper
 101 100
 103 0.0 49.7 74.5#



#8
 Diethyl Ether
 Concen: 8.902 ug/l
 RT: 1.57 min Scan# 96
 Delta R.T. -0.05 min
 Lab File: VF061598.D
 Acq: 11 Feb 2019 21:00

Tgt Ion: 74 Resp: 59
 Ion Ratio Lower Upper
 74 100
 45 169.0 65.8 197.5

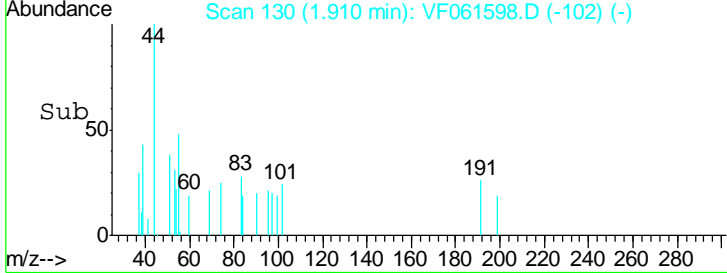
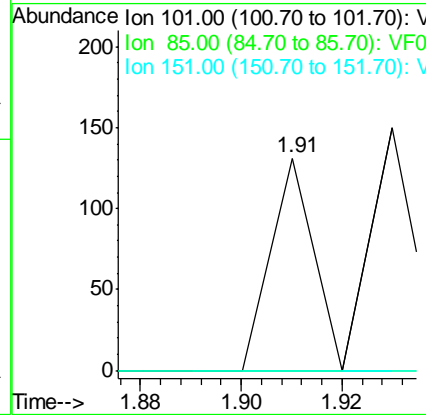
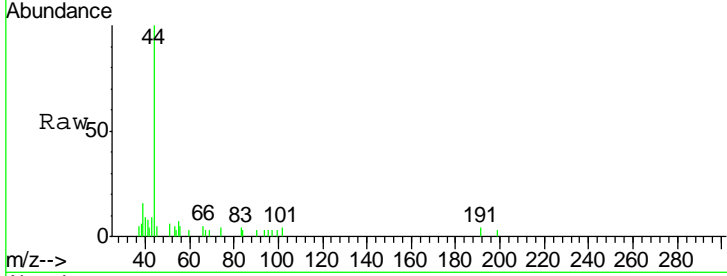




#9
 1,1,2-Trichlorotrifluoroethane
 Concen: 3.139 ug/l
 RT: 1.91 min Scan# 130
 Delta R.T. 0.07 min
 Lab File: VF061598.D
 Acq: 11 Feb 2019 21:00

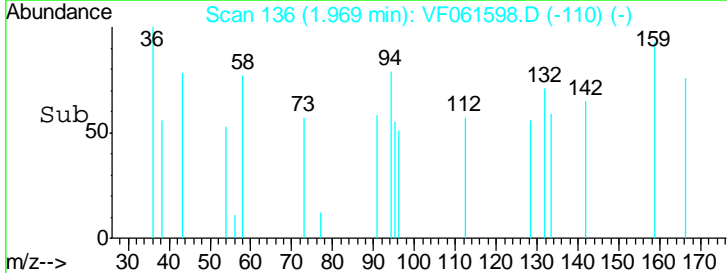
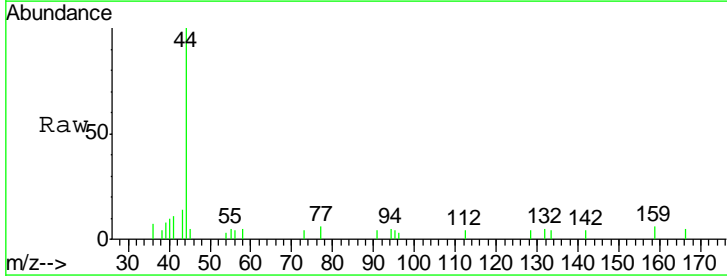
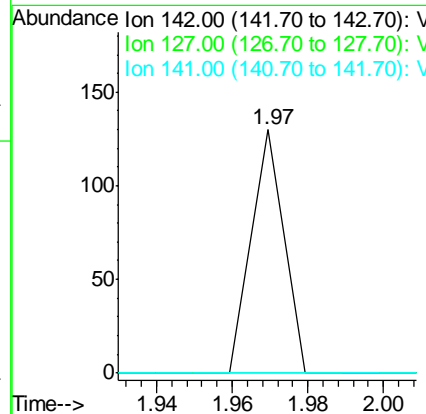
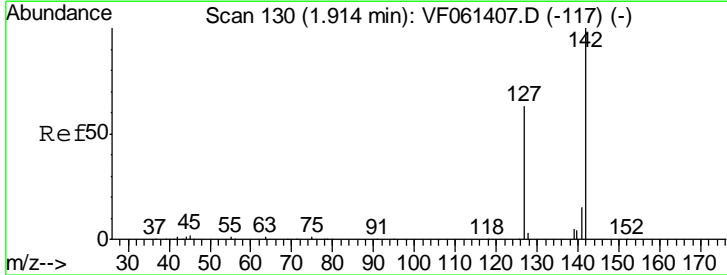
Instrument :
 MSVOA_F
 ClientSampled :

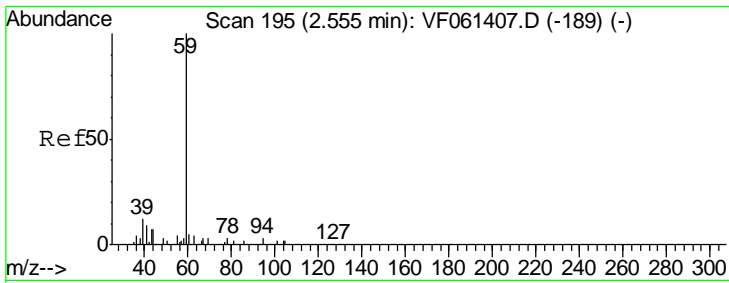
Tgt Ion	Resp	Lower	Upper
101	100		
85	0.0	41.9	62.9#
151	0.0	55.1	82.7#



#10
 Methyl Iodide
 Concen: 1.999 ug/l
 RT: 1.97 min Scan# 136
 Delta R.T. 0.06 min
 Lab File: VF061598.D
 Acq: 11 Feb 2019 21:00

Tgt Ion	Resp	Lower	Upper
142	100		
127	0.0	50.7	76.1#
141	0.0	11.8	17.6#

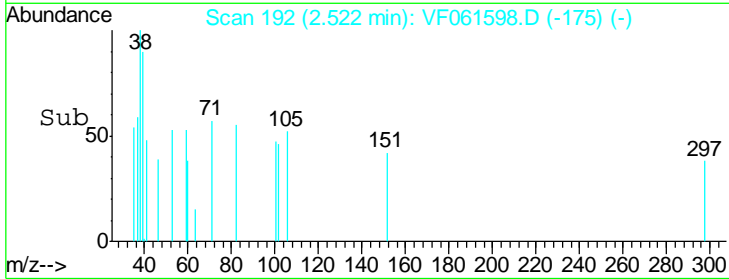
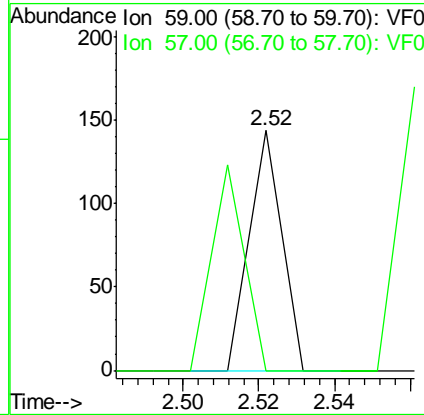
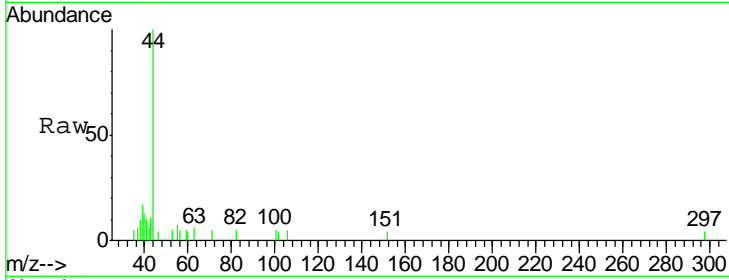




#11
 Tert butyl alcohol
 Concen: 78.348 ug/l
 RT: 2.52 min Scan# 192
 Delta R.T. -0.03 min
 Lab File: VF061598.D
 Acq: 11 Feb 2019 21:00

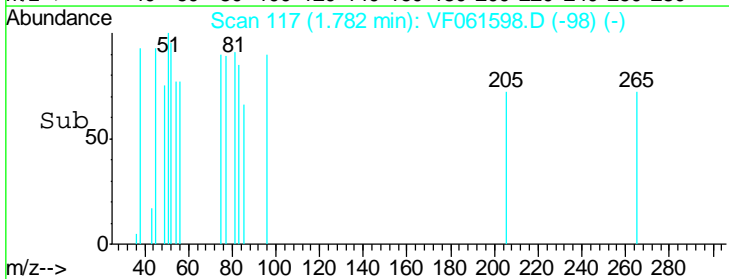
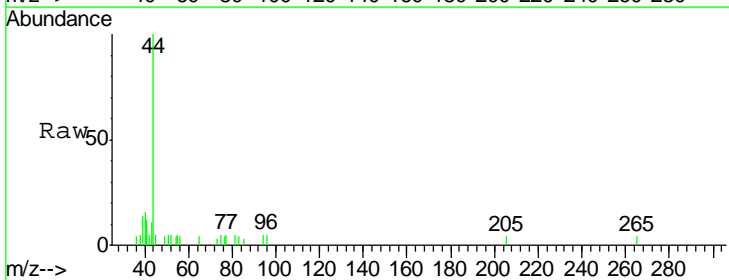
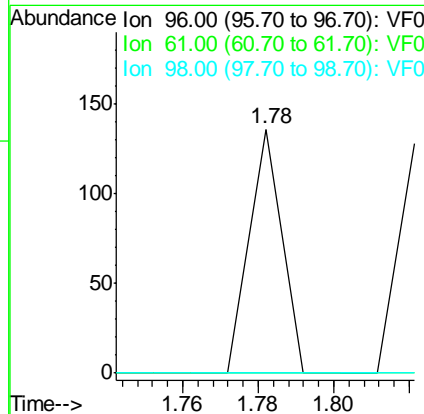
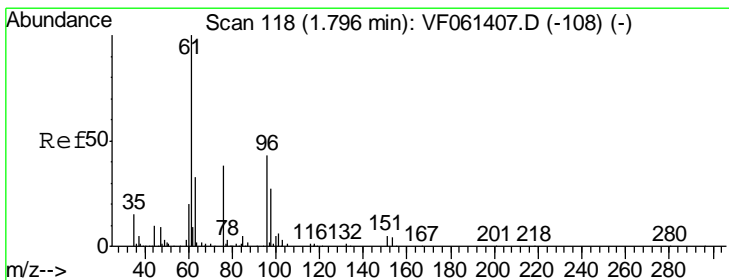
Instrument :
 MSVOA_F
 ClientSampled :

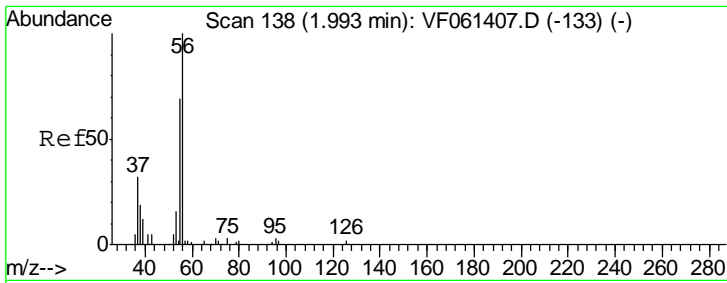
Tgt Ion	Resp	Lower	Upper
59	100		
57	0.0	11.9	17.9#



#12
 1,1-Dichloroethene
 Concen: 4.387 ug/l
 RT: 1.78 min Scan# 117
 Delta R.T. -0.01 min
 Lab File: VF061598.D
 Acq: 11 Feb 2019 21:00

Tgt Ion	Resp	Lower	Upper
96	100		
61	0.0	186.9	280.3#
98	0.0	53.0	79.4#

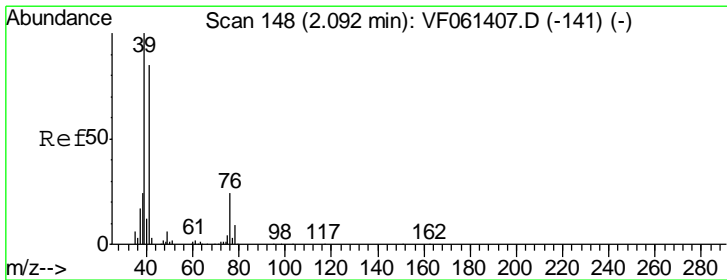
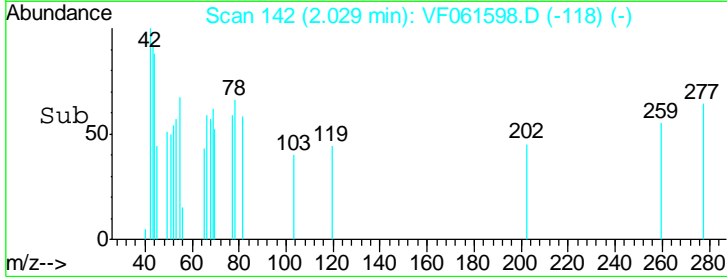
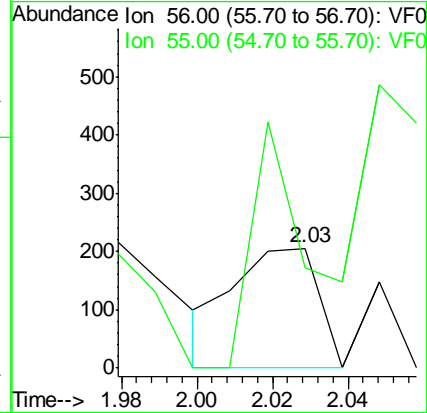
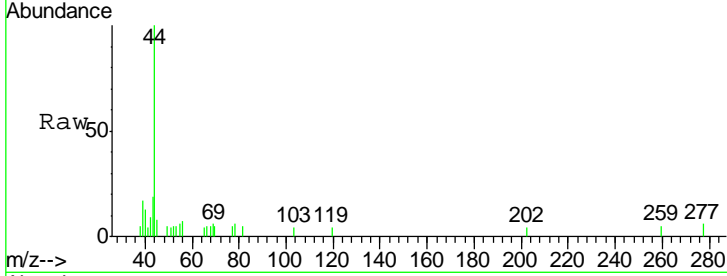




#13
 Acrolein
 Concen: 336.563 ug/l
 RT: 2.03 min Scan# 142
 Delta R.T. 0.04 min
 Lab File: VF061598.D
 Acq: 11 Feb 2019 21:00

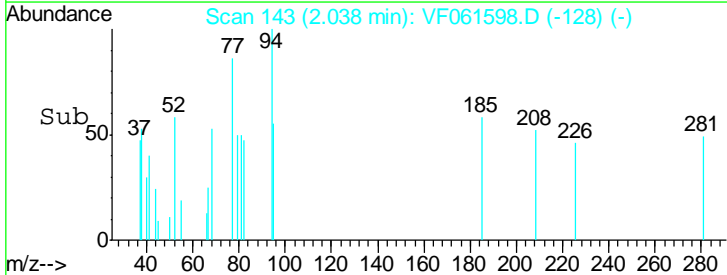
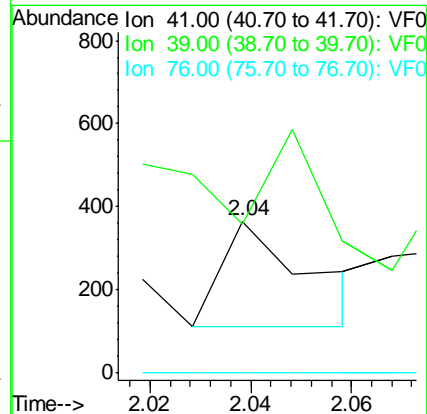
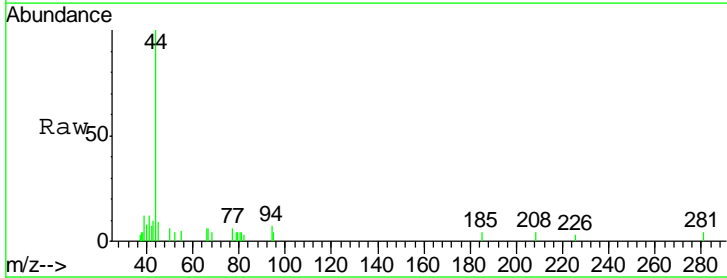
Instrument : MSVOA_F
 ClientSampled :

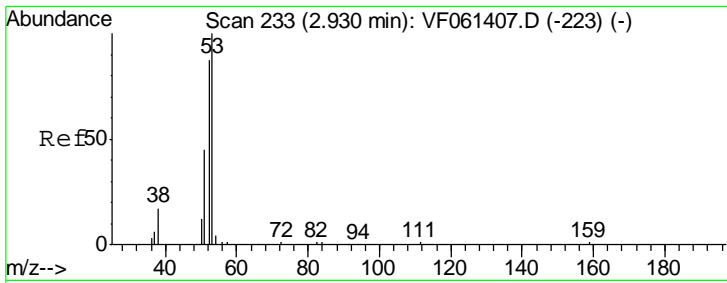
Tgt Ion	Resp	Lower	Upper
56	100		
55	83.5	57.5	86.3



#14
 Allyl chloride
 Concen: 2.099 ug/l
 RT: 2.04 min Scan# 143
 Delta R.T. -0.05 min
 Lab File: VF061598.D
 Acq: 11 Feb 2019 21:00

Tgt Ion	Resp	Lower	Upper
41	100		
39	97.8	94.6	141.8
76	0.0	25.9	38.9#

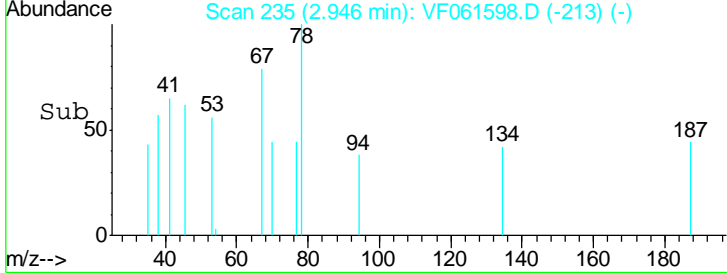
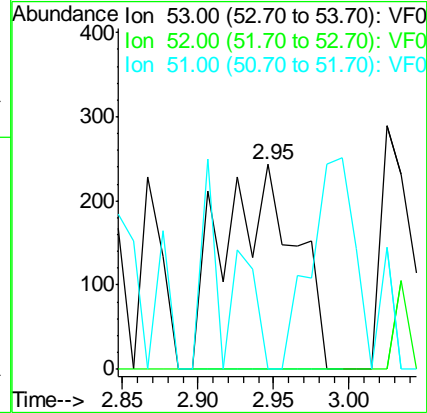
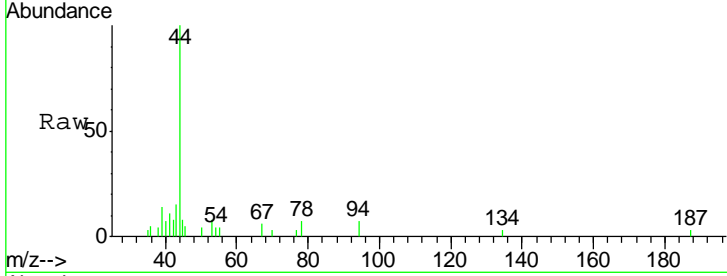




#15
 Acrylonitrile
 Concen: 291.112 ug/l
 RT: 2.95 min Scan# 235
 Delta R.T. 0.02 min
 Lab File: VF061598.D
 Acq: 11 Feb 2019 21:00

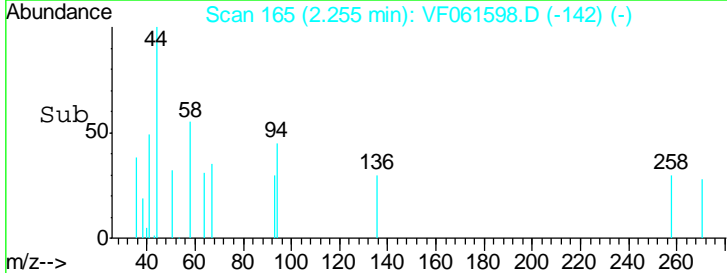
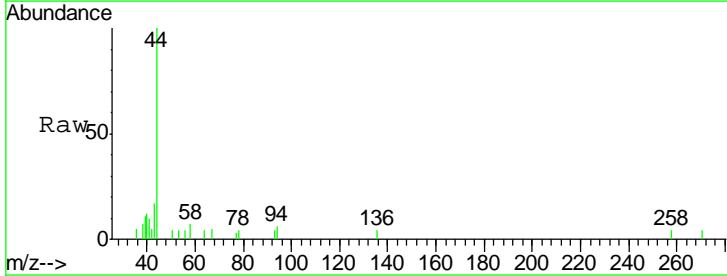
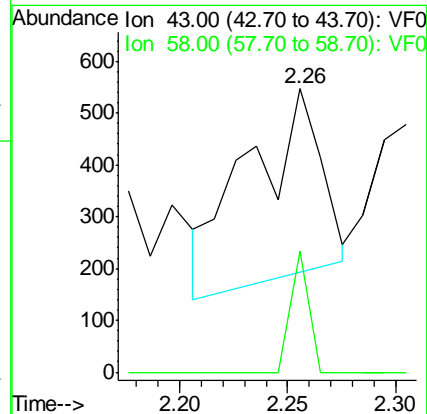
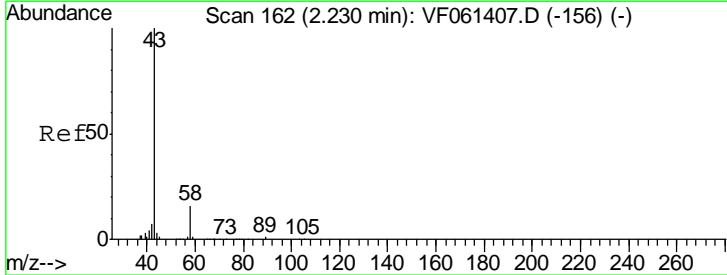
Instrument :
 MSVOA_F
 ClientSampled :

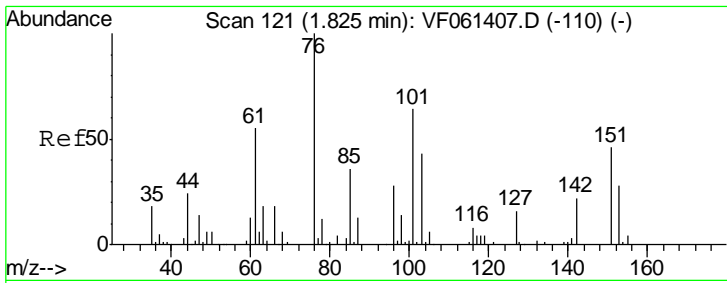
Tgt Ion	Resp	Lower	Upper
53	100		
52	0.0	69.6	104.4#
51	0.0	36.8	55.2#



#16
 Acetone
 Concen: 165.504 ug/l
 RT: 2.26 min Scan# 165
 Delta R.T. 0.03 min
 Lab File: VF061598.D
 Acq: 11 Feb 2019 21:00

Tgt Ion	Resp	Lower	Upper
43	100		
58	42.8	13.3	19.9#

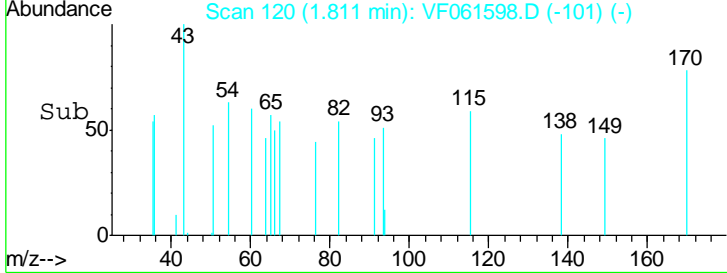
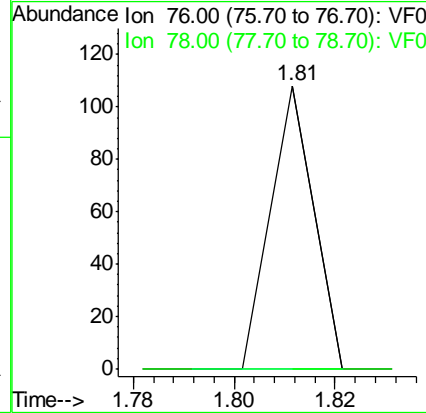
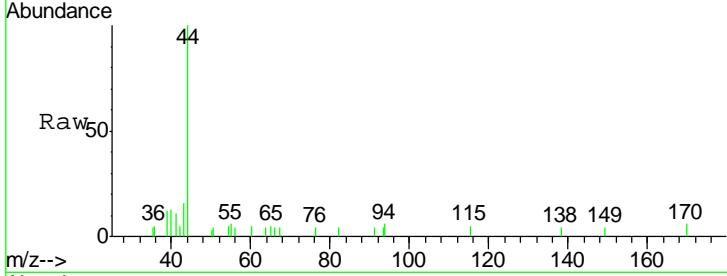




#17
 Carbon Disulfide
 Concen: 1.112 ug/l
 RT: 1.81 min Scan# 120
 Delta R.T. -0.01 min
 Lab File: VF061598.D
 Acq: 11 Feb 2019 21:00

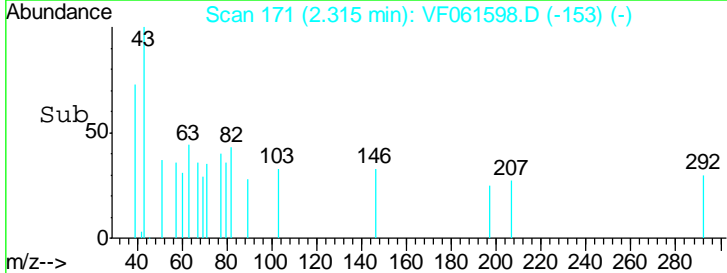
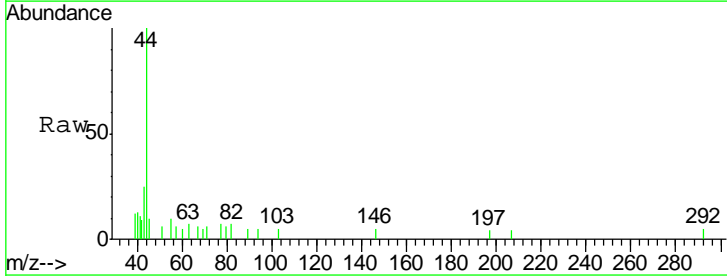
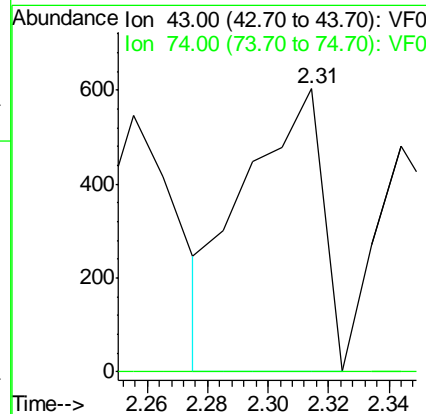
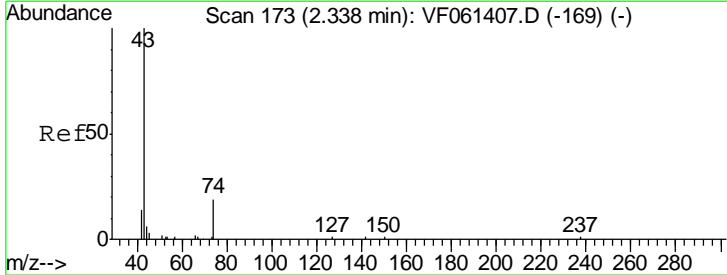
Instrument :
 MSVOA_F
 ClientSampled :

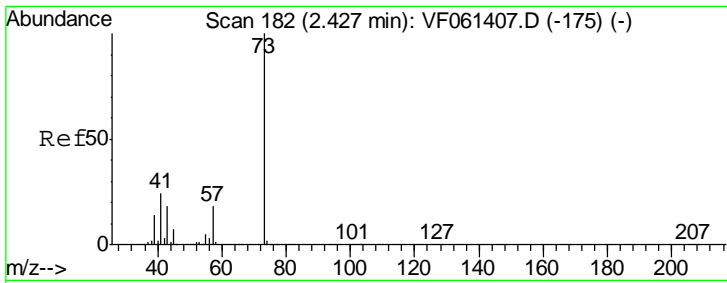
Tgt Ion	Resp	Lower	Upper
76	100		
78	0.0	9.6	14.4#



#18
 Methyl Acetate
 Concen: 106.403 ug/l
 RT: 2.31 min Scan# 171
 Delta R.T. -0.02 min
 Lab File: VF061598.D
 Acq: 11 Feb 2019 21:00

Tgt Ion	Resp	Lower	Upper
43	100		
74	0.0	13.4	20.0#

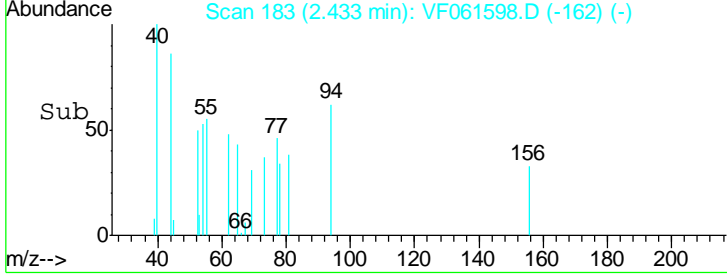
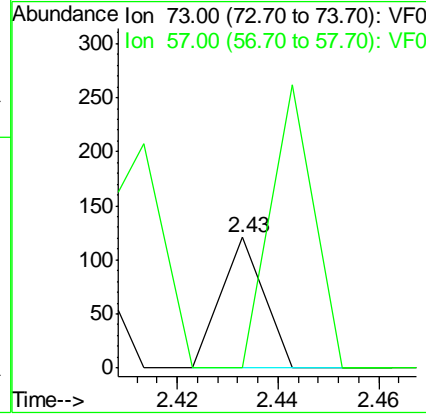
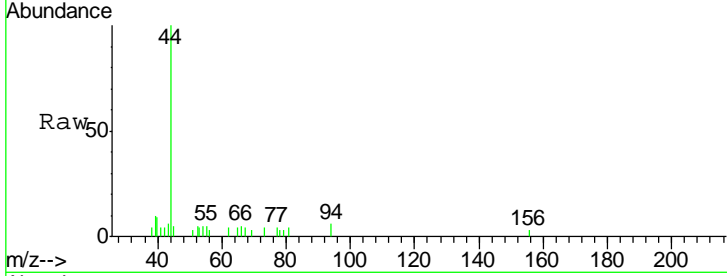




#19
 Methyl tert-butyl Ether
 Concen: 1.740 ug/l
 RT: 2.43 min Scan# 183
 Delta R.T. 0.01 min
 Lab File: VF061598.D
 Acq: 11 Feb 2019 21:00

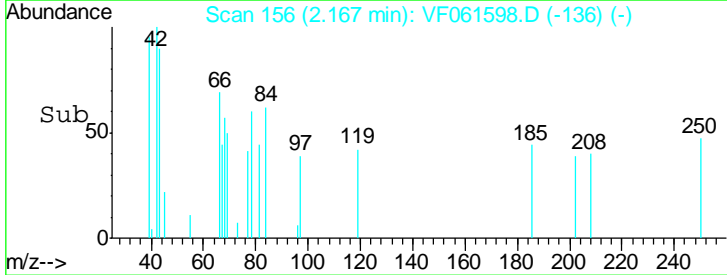
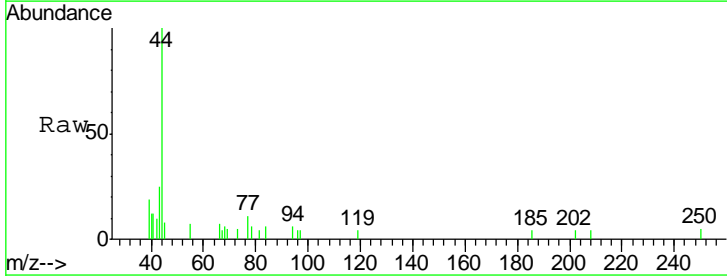
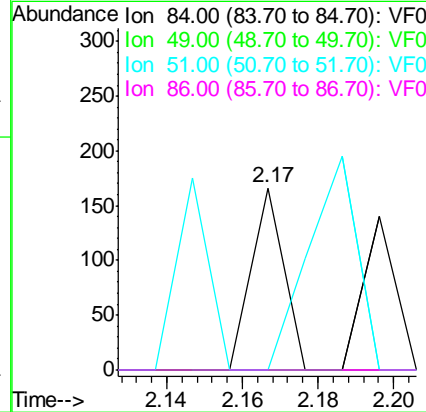
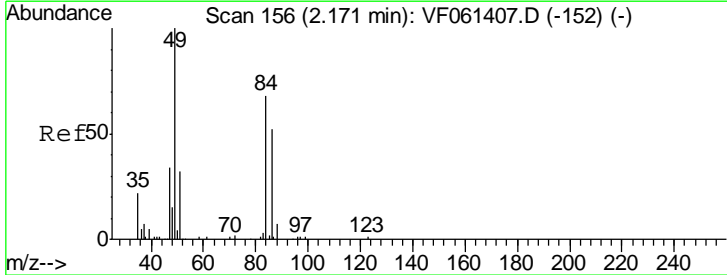
Instrument :
 MSVOA_F
 ClientSampled :

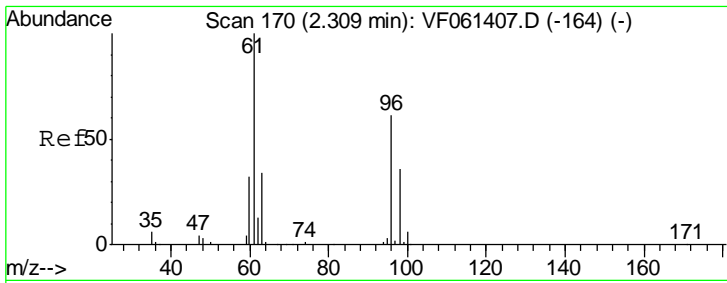
Tgt Ion	Resp	Lower	Upper
73	100		
57	0.0	14.8	22.2#



#20
 Methylene Chloride
 Concen: 3.998 ug/l
 RT: 2.17 min Scan# 156
 Delta R.T. -0.00 min
 Lab File: VF061598.D
 Acq: 11 Feb 2019 21:00

Tgt Ion	Resp	Lower	Upper
84	100		
49	0.0	120.0	180.0#
51	0.0	38.6	58.0#
86	0.0	61.0	91.6#

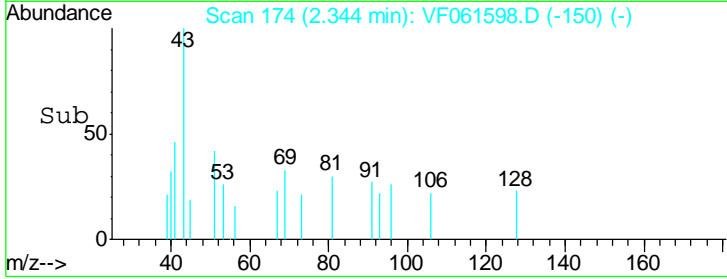
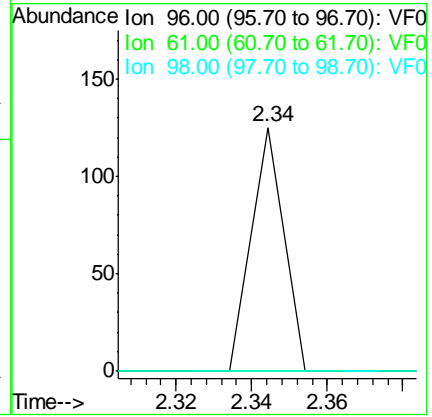
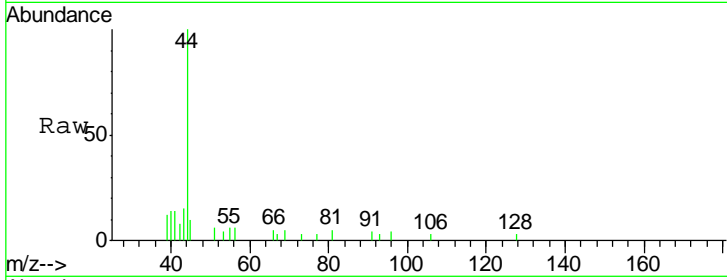




#21
 trans-1,2-Dichloroethene
 Concen: 3.643 ug/l
 RT: 2.34 min Scan# 174
 Delta R.T. 0.04 min
 Lab File: VF061598.D
 Acq: 11 Feb 2019 21:00

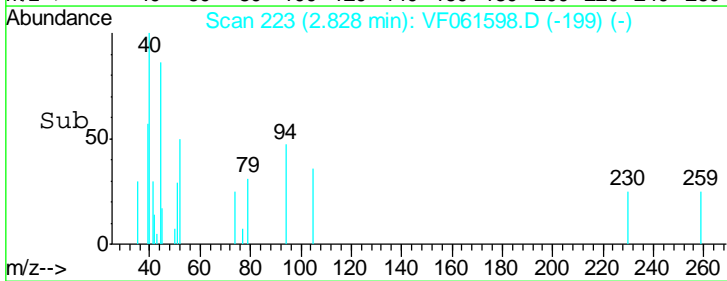
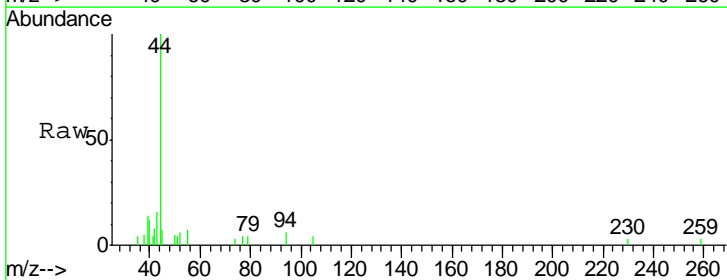
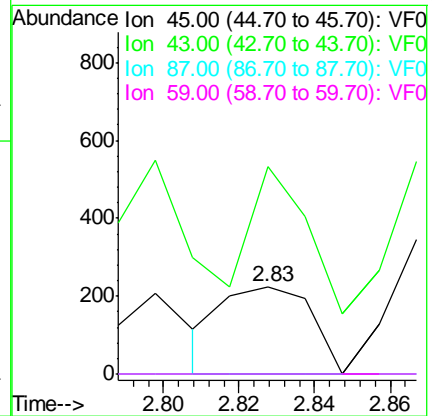
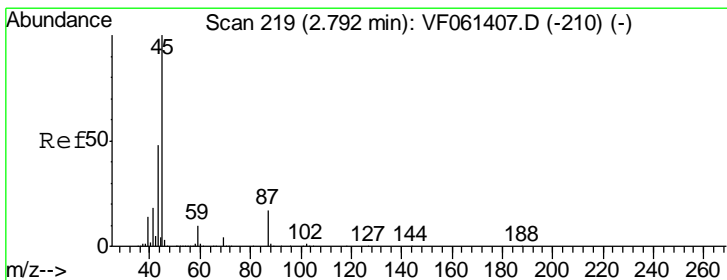
Instrument : MSVOA_F
 ClientSampled :

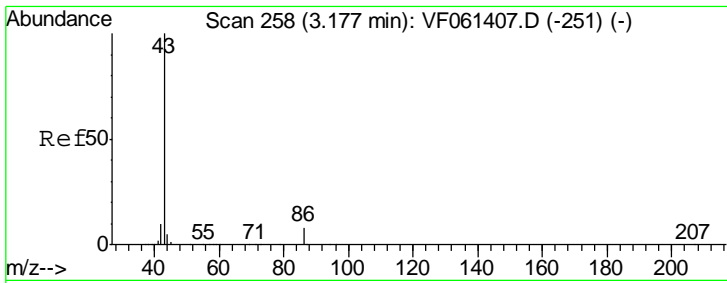
Tgt Ion	Resp	Lower	Upper
96	100		
61	0.0	131.8	197.8#
98	0.0	47.4	71.0#



#22
 Diisopropyl ether
 Concen: 5.585 ug/l
 RT: 2.83 min Scan# 223
 Delta R.T. 0.04 min
 Lab File: VF061598.D
 Acq: 11 Feb 2019 21:00

Tgt Ion	Resp	Lower	Upper
45	100		
43	238.4	39.0	58.6#
87	0.0	13.9	20.9#
59	0.0	7.8	11.6#

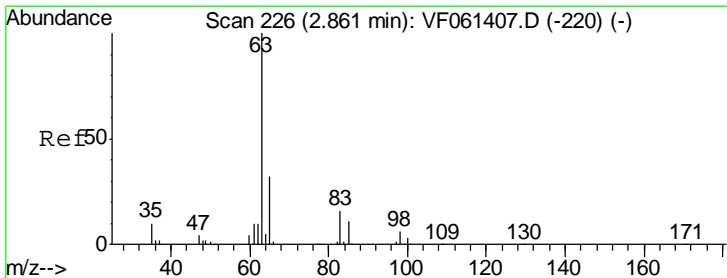
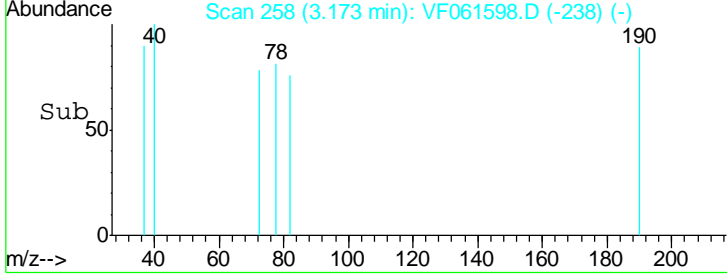
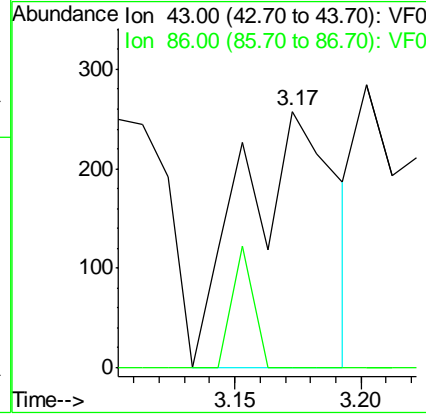
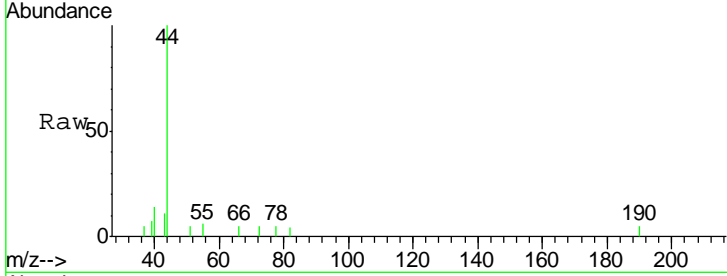




#23
 Vinyl Acetate
 Concen: 25.875 ug/l
 RT: 3.17 min Scan# 258
 Delta R.T. -0.00 min
 Lab File: VF061598.D
 Acq: 11 Feb 2019 21:00

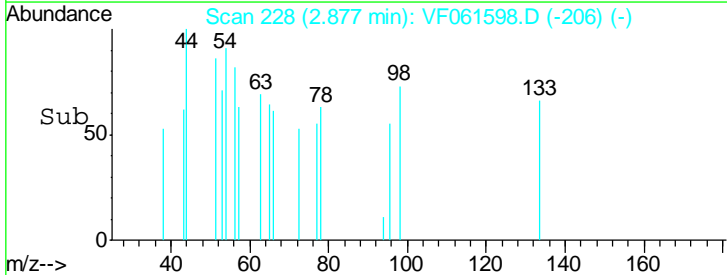
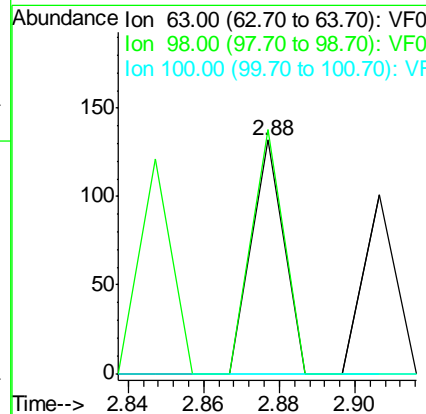
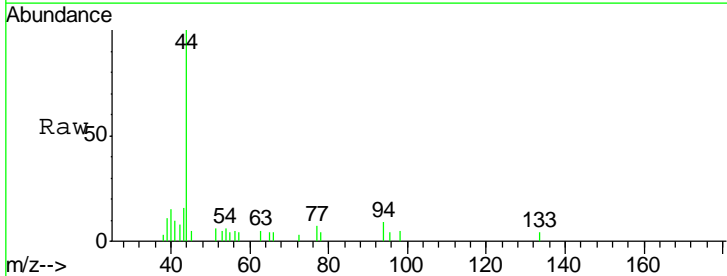
Instrument :
 MSVOA_F
 ClientSampled :

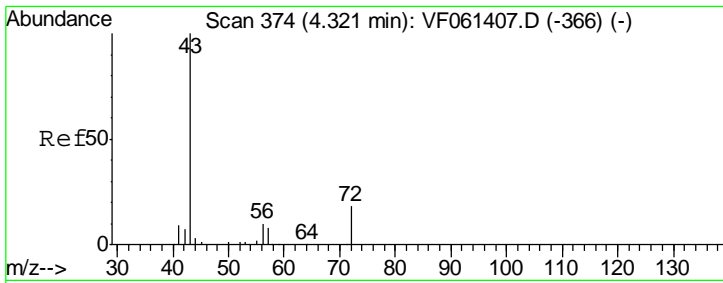
Tgt Ion	Resp	Lower	Upper
43	100		
86	0.0	6.2	9.4#



#24
 1,1-Dichloroethane
 Concen: 1.891 ug/l
 RT: 2.88 min Scan# 228
 Delta R.T. 0.02 min
 Lab File: VF061598.D
 Acq: 11 Feb 2019 21:00

Tgt Ion	Resp	Lower	Upper
63	100		
98	104.5	2.9	8.8#
100	0.0	1.6	4.8#

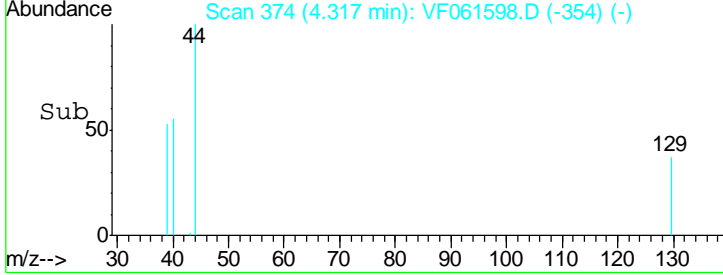
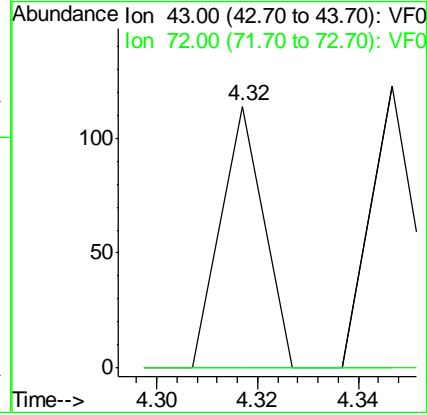
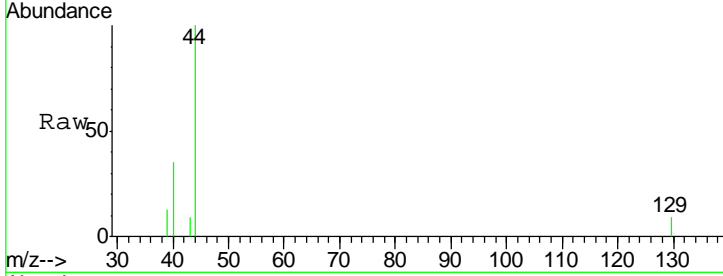




#25
 2-Butanone
 Concen: 7.836 ug/l
 RT: 4.32 min Scan# 374
 Delta R.T. -0.00 min
 Lab File: VF061598.D
 Acq: 11 Feb 2019 21:00

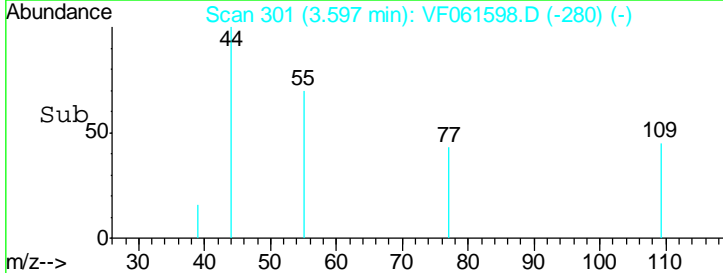
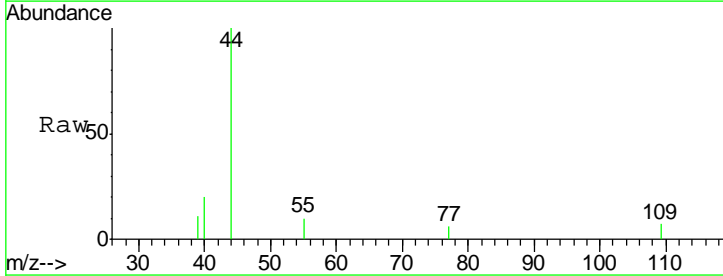
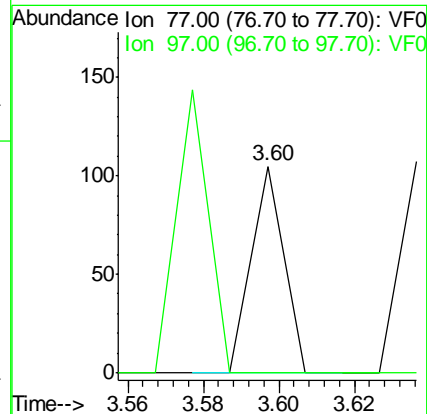
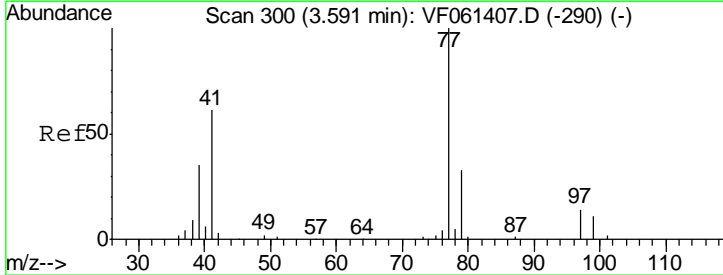
Instrument :
 MSVOA_F
 ClientSampled :

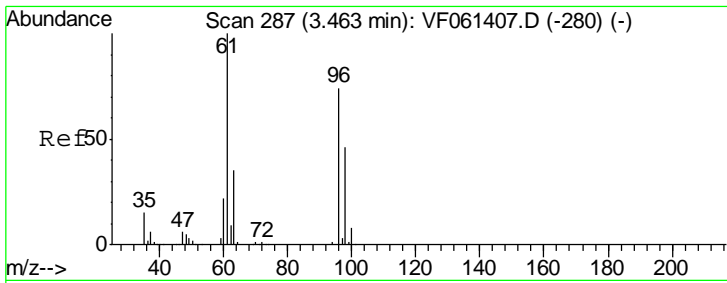
Tgt Ion	Ratio	Lower	Upper
43	100		
72	0.0	15.8	23.6#



#26
 2,2-Dichloropropane
 Concen: 2.447 ug/l
 RT: 3.60 min Scan# 301
 Delta R.T. 0.01 min
 Lab File: VF061598.D
 Acq: 11 Feb 2019 21:00

Tgt Ion	Ratio	Lower	Upper
77	100		
97	0.0	8.5	25.5#

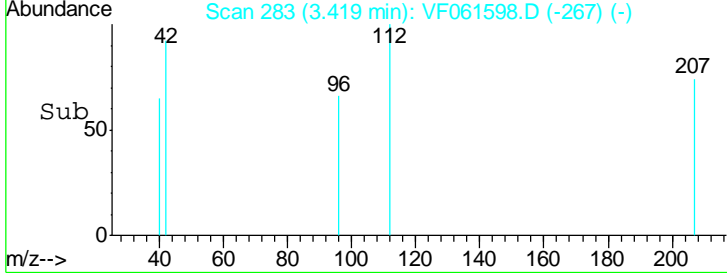
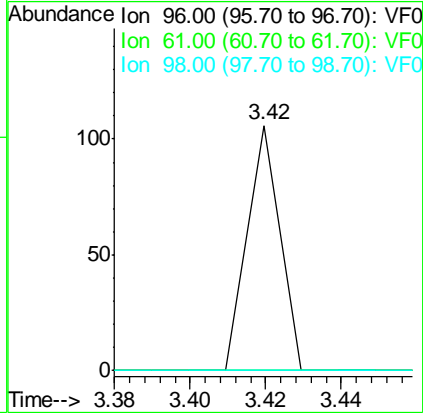
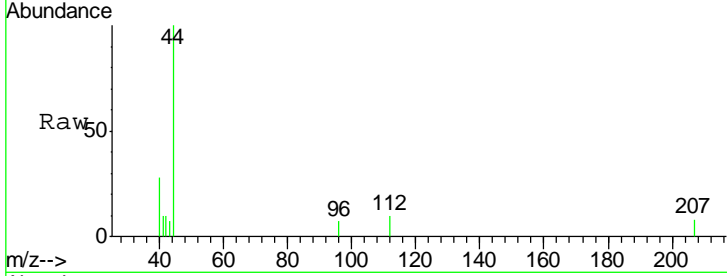




#27
 cis-1,2-Dichloroethene
 Concen: 2.101 ug/l
 RT: 3.42 min Scan# 283
 Delta R.T. -0.04 min
 Lab File: VF061598.D
 Acq: 11 Feb 2019 21:00

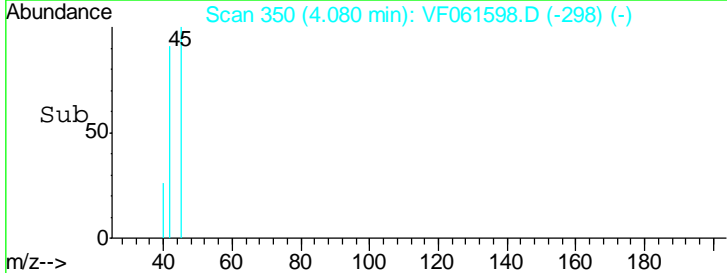
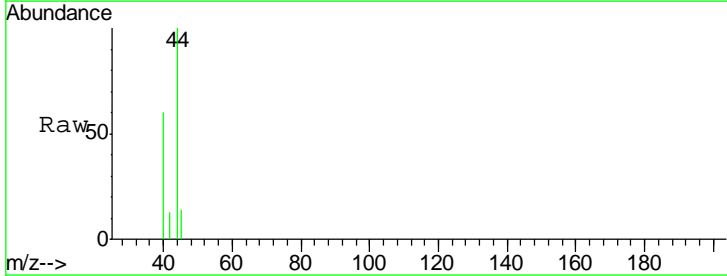
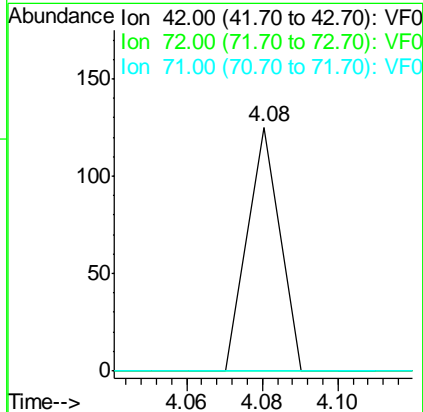
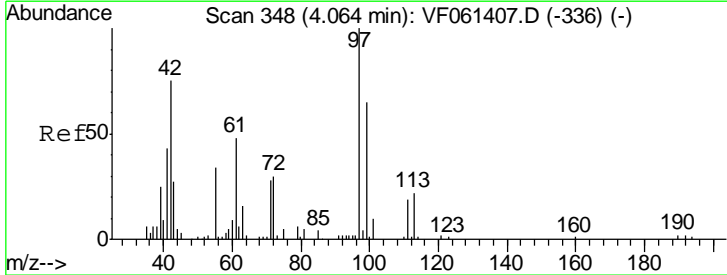
Instrument :
 MSVOA_F
 ClientSampled :

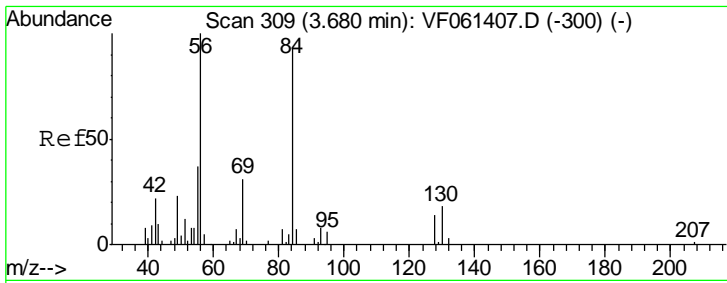
Tgt Ion	Resp	Lower	Upper
96	100		
61	0.0	0.0	270.2
98	0.0	0.0	124.0



#29
 Tetrahydrofuran
 Concen: 20.098 ug/l
 RT: 4.08 min Scan# 350
 Delta R.T. 0.02 min
 Lab File: VF061598.D
 Acq: 11 Feb 2019 21:00

Tgt Ion	Resp	Lower	Upper
42	100		
72	0.0	28.9	43.3#
71	0.0	29.6	44.4#

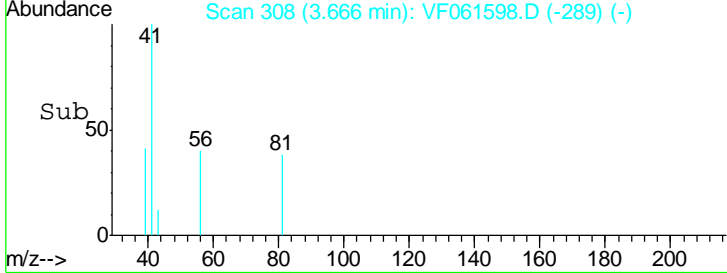
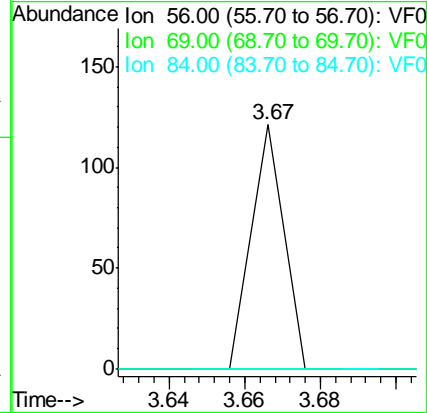
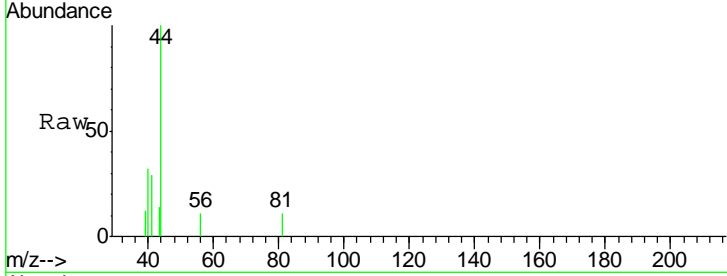




#31
 Cyclohexane
 Concen: 1.748 ug/l
 RT: 3.67 min Scan# 308
 Delta R.T. -0.01 min
 Lab File: VF061598.D
 Acq: 11 Feb 2019 21:00

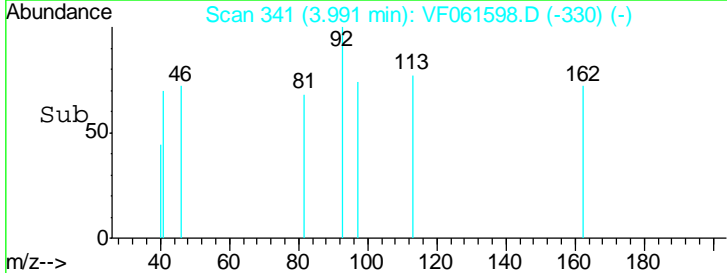
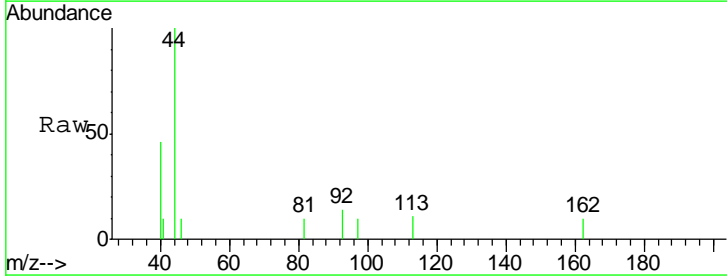
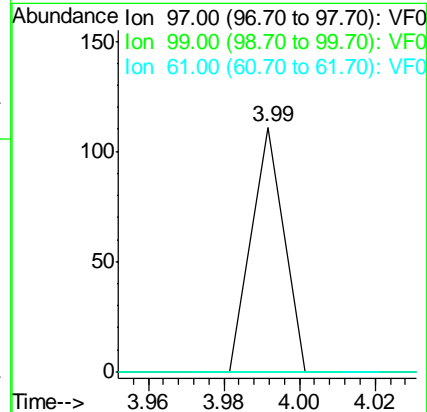
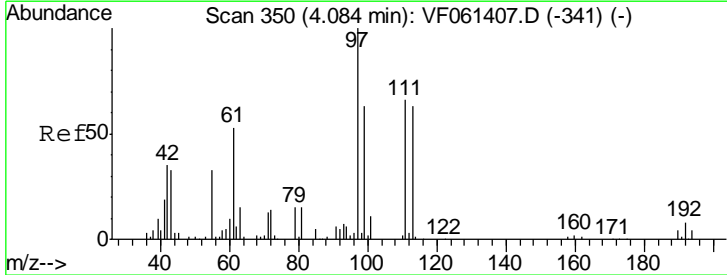
Instrument :
 MSVOA_F
 ClientSampled :

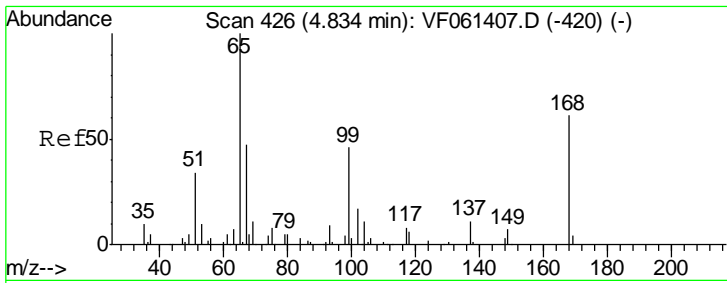
Tgt Ion	Resp	Lower	Upper
56	100		
69	0.0	24.6	36.8#
84	0.0	74.2	111.2#



#32
 1,1,1-Trichloroethane
 Concen: 1.617 ug/l
 RT: 3.99 min Scan# 341
 Delta R.T. -0.09 min
 Lab File: VF061598.D
 Acq: 11 Feb 2019 21:00

Tgt Ion	Resp	Lower	Upper
97	100		
99	0.0	50.1	75.1#
61	0.0	43.1	64.7#

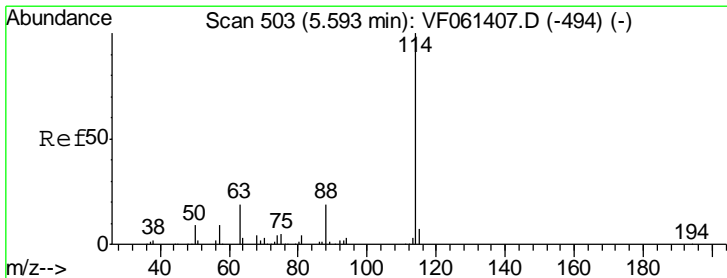
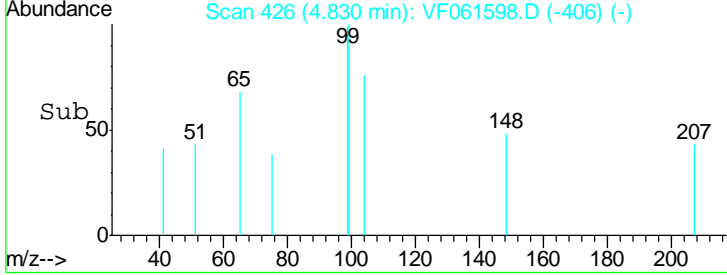
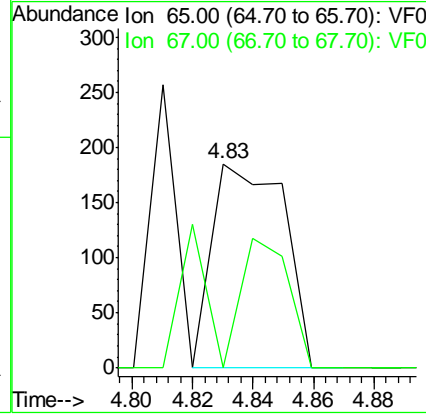
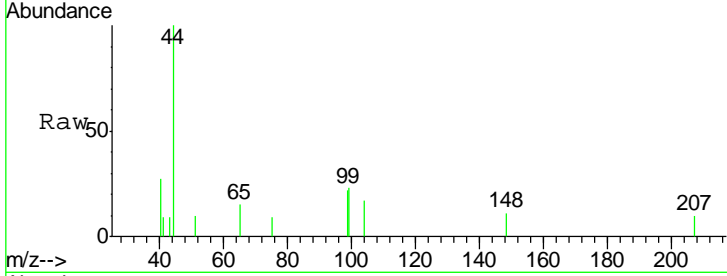




#33
 1,2-Dichloroethane-d4
 Concen: 11.978 ug/l
 RT: 4.83 min Scan# 426
 Delta R.T. -0.00 min
 Lab File: VF061598.D
 Acq: 11 Feb 2019 21:00

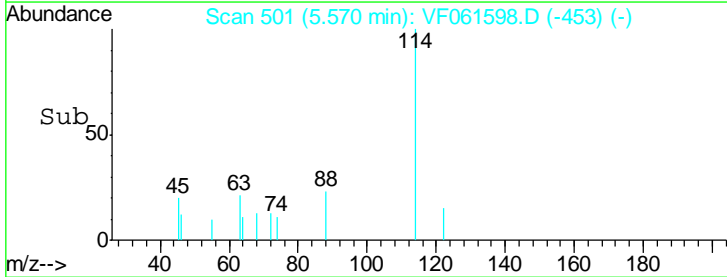
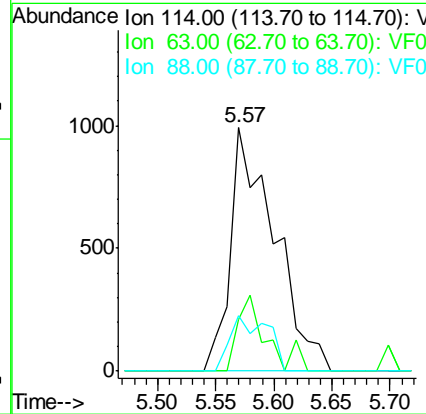
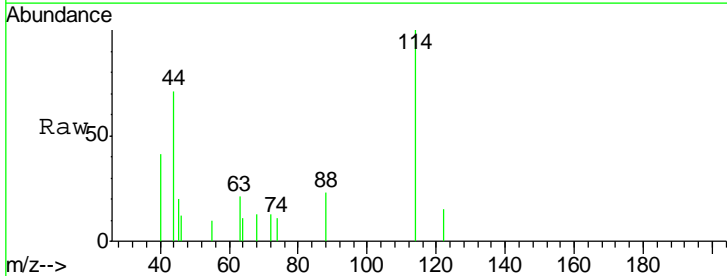
Instrument :
 MSVOA_F
 ClientSampled :

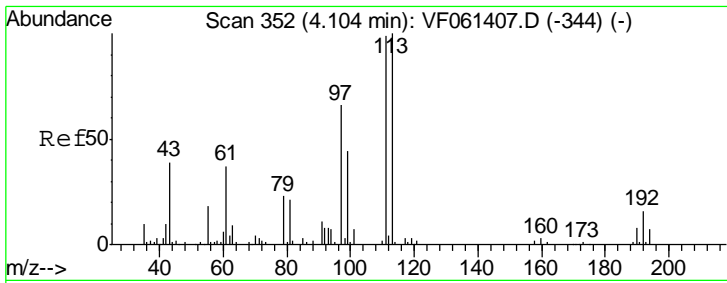
Tgt Ion	Resp	Lower	Upper
65	100		
67	0.0	0.0	99.8



#34
 1,4-Difluorobenzene
 Concen: 50.000 ug/l
 RT: 5.57 min Scan# 501
 Delta R.T. -0.02 min
 Lab File: VF061598.D
 Acq: 11 Feb 2019 21:00

Tgt Ion	Resp	Lower	Upper
114	100		
63	21.0	0.0	39.0
88	22.9	0.0	37.4

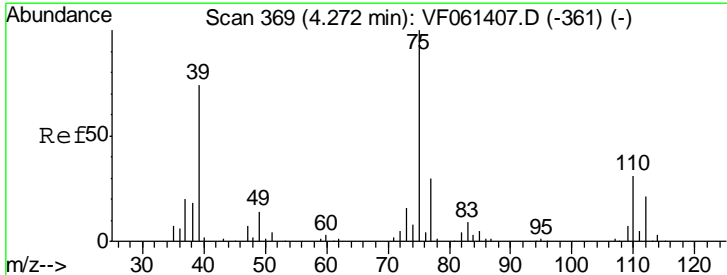
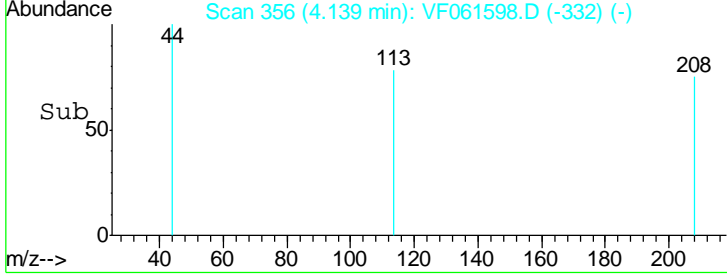
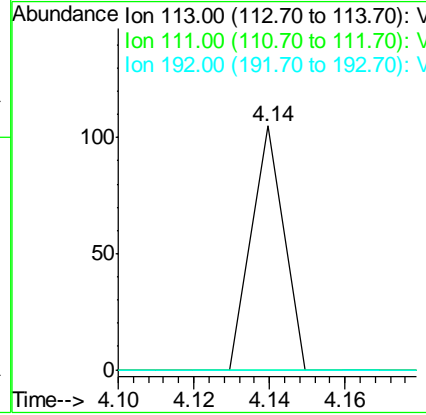
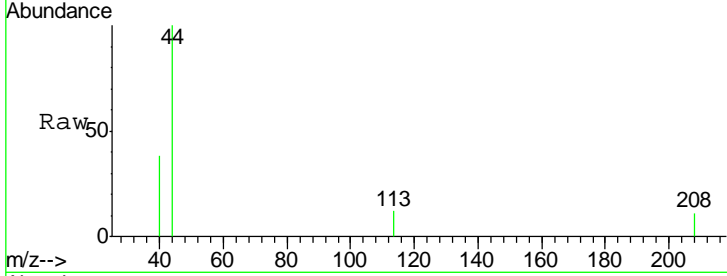




#35
 Dibromofluoromethane
 Concen: 3.016 ug/l
 RT: 4.14 min Scan# 356
 Delta R.T. 0.04 min
 Lab File: VF061598.D
 Acq: 11 Feb 2019 21:00

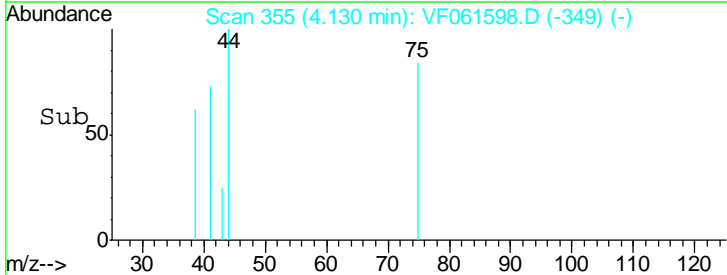
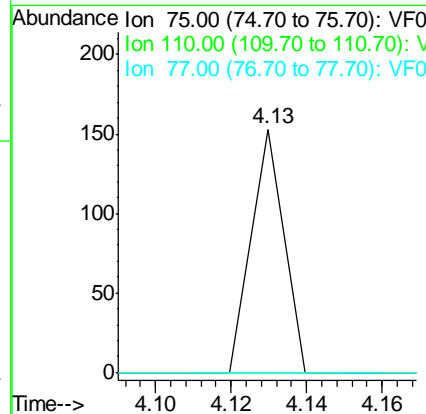
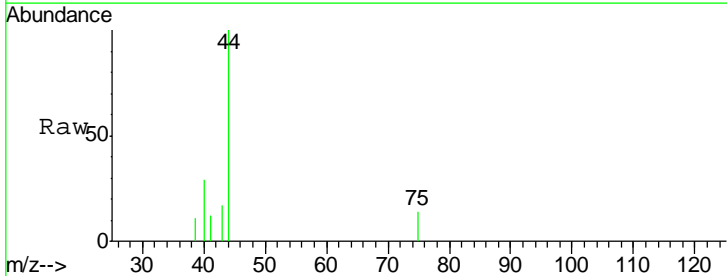
Instrument :
 MSVOA_F
 ClientSampled :

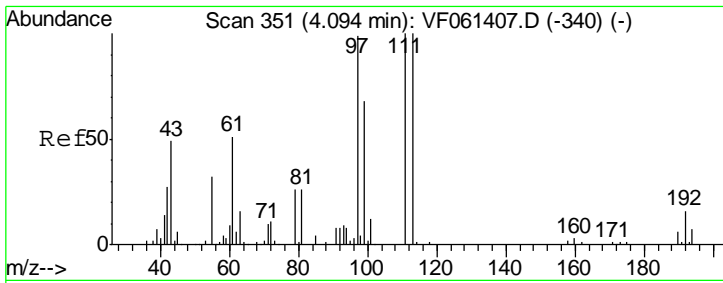
Tgt Ion	Resp	Lower	Upper
113	100		
111	0.0	79.4	119.0#
192	0.0	12.4	18.6#



#36
 1,1-Dichloropropene
 Concen: 3.013 ug/l
 RT: 4.13 min Scan# 355
 Delta R.T. -0.14 min
 Lab File: VF061598.D
 Acq: 11 Feb 2019 21:00

Tgt Ion	Resp	Lower	Upper
75	100		
110	0.0	15.8	47.3#
77	0.0	24.0	36.0#

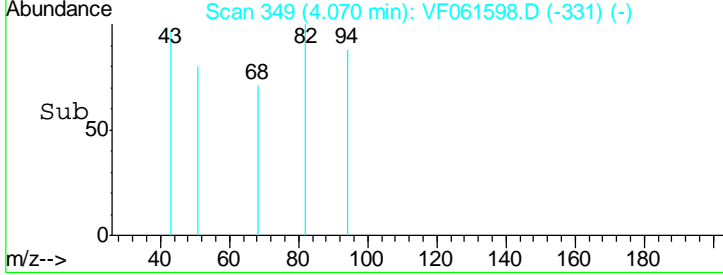
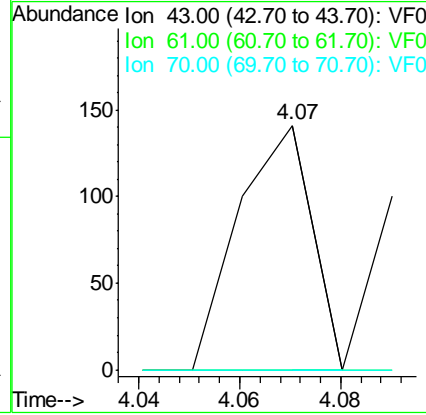
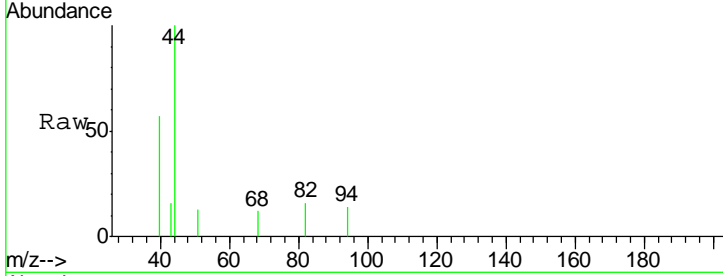




#37
 Ethyl Acetate
 Concen: 11.844 ug/l
 RT: 4.07 min Scan# 349
 Delta R.T. -0.02 min
 Lab File: VF061598.D
 Acq: 11 Feb 2019 21:00

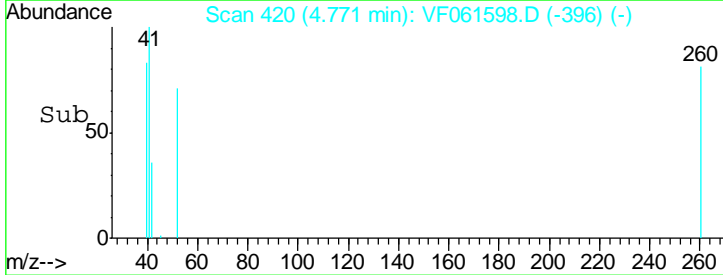
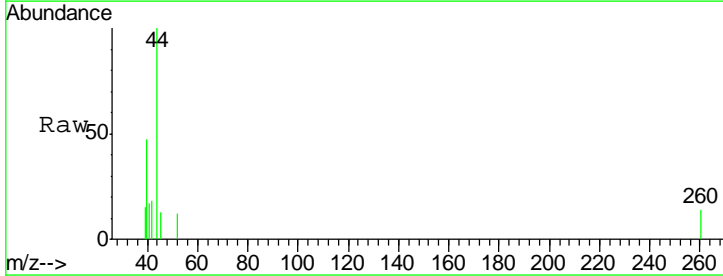
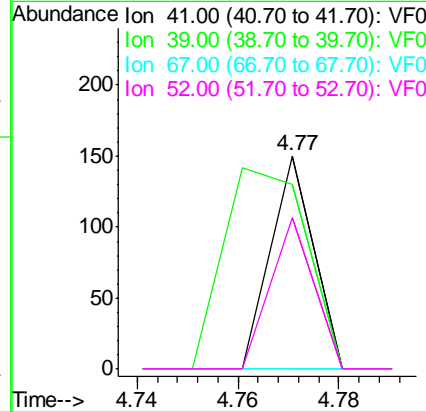
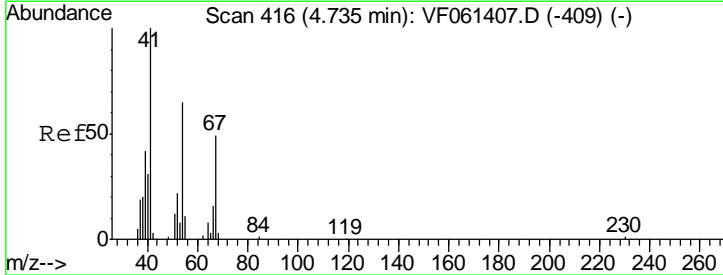
Instrument :
 MSVOA_F
 ClientSampled :

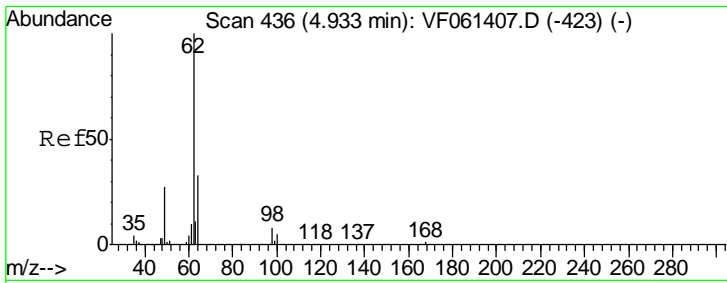
Tgt Ion	Resp	Lower	Upper
43	100		
61	0.0	81.7	122.5#
70	0.0	6.2	9.2#



#41
 Methacrylonitrile
 Concen: 13.854 ug/l
 RT: 4.77 min Scan# 420
 Delta R.T. 0.04 min
 Lab File: VF061598.D
 Acq: 11 Feb 2019 21:00

Tgt Ion	Resp	Lower	Upper
41	100		
39	86.7	43.1	64.7#
67	0.0	38.8	58.2#
52	71.3	33.2	49.8#

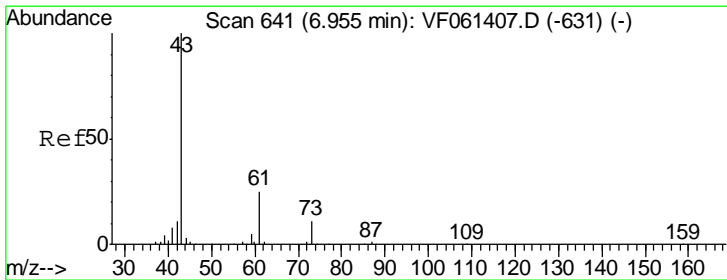
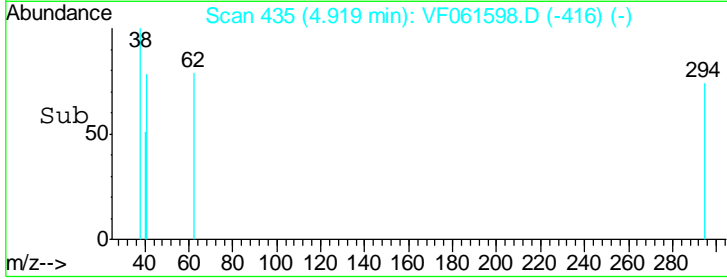
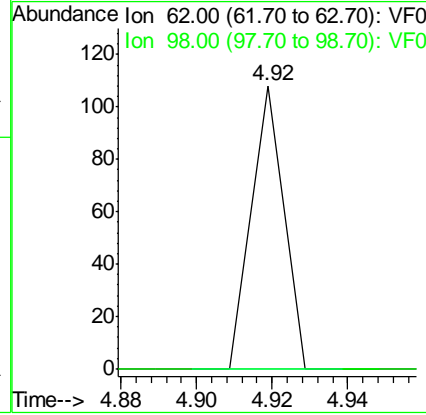
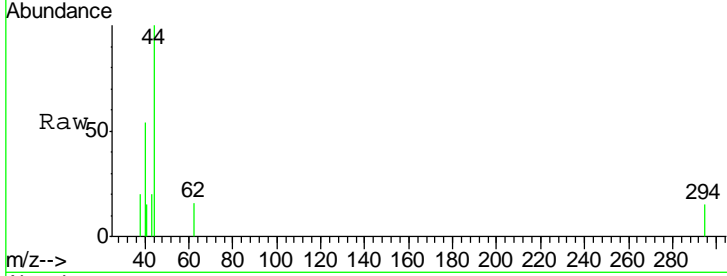




#42
 1,2-Dichloroethane
 Concen: 2.672 ug/l
 RT: 4.92 min Scan# 435
 Delta R.T. -0.01 min
 Lab File: VF061598.D
 Acq: 11 Feb 2019 21:00

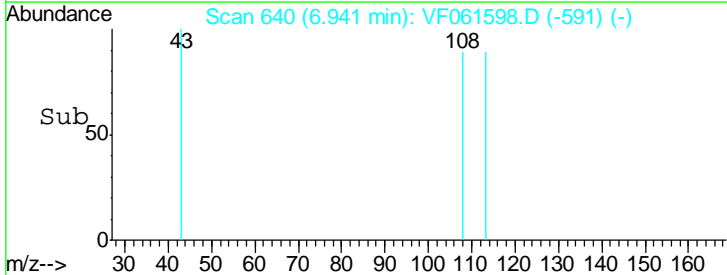
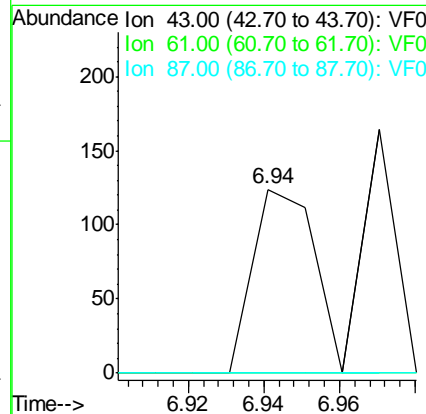
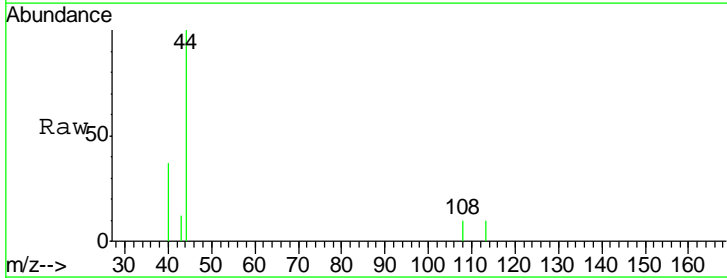
Instrument :
 MSVOA_F
 ClientSampled :

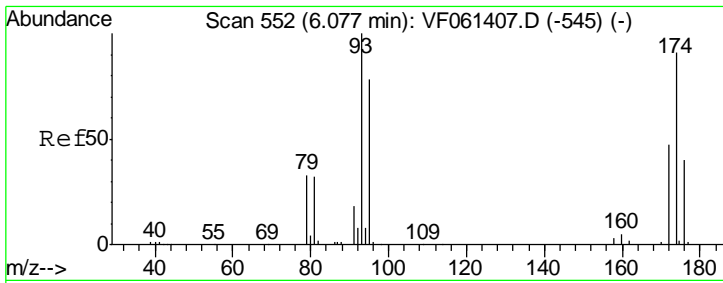
Tgt Ion	Resp	Lower	Upper
62	100	0.0	17.0
98	0.0	0.0	17.0



#43
 Isopropyl Acetate
 Concen: 9.239 ug/l
 RT: 6.94 min Scan# 640
 Delta R.T. -0.01 min
 Lab File: VF061598.D
 Acq: 11 Feb 2019 21:00

Tgt Ion	Resp	Lower	Upper
43	100	0.0	30.5#
61	0.0	20.3	30.5#
87	0.0	0.5	0.7#

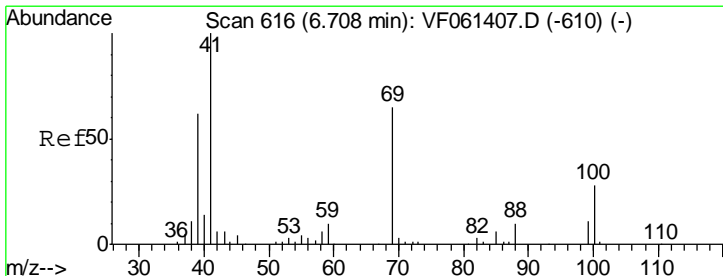
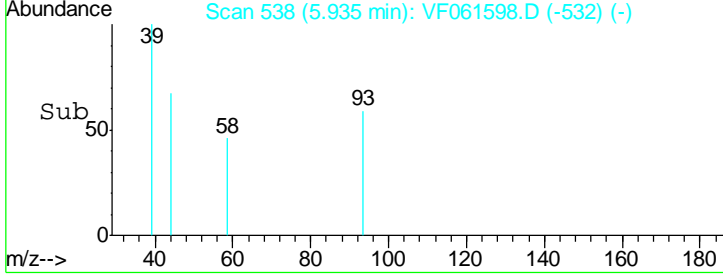
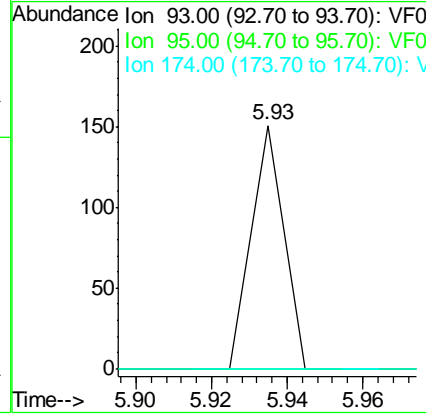
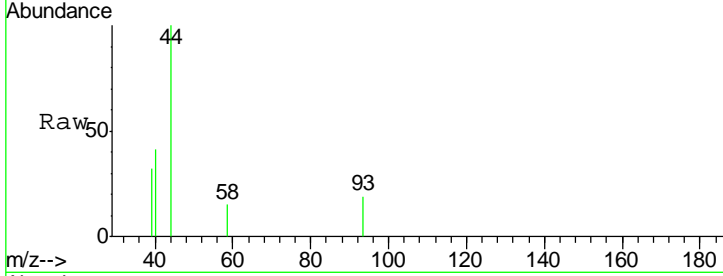




#46
 Dibromomethane
 Concen: 7.588 ug/l
 RT: 5.93 min Scan# 538
 Delta R.T. -0.14 min
 Lab File: VF061598.D
 Acq: 11 Feb 2019 21:00

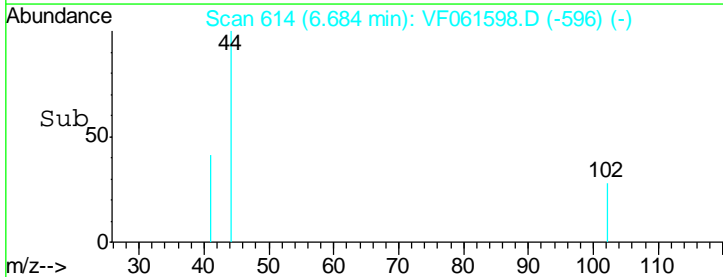
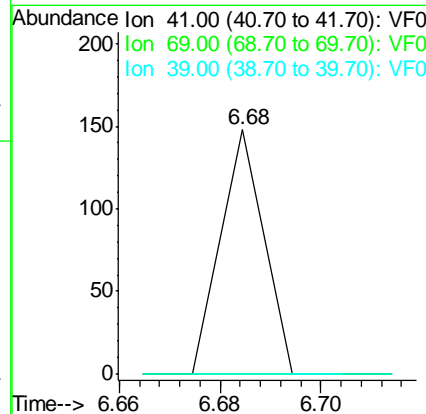
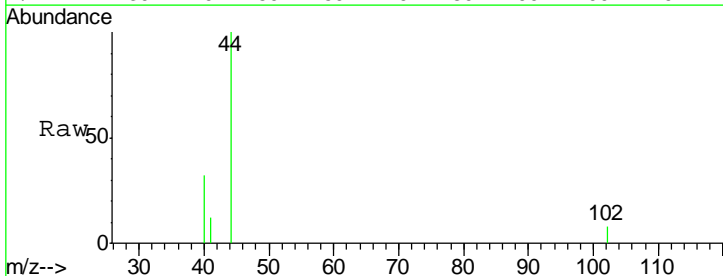
Instrument :
 MSVOA_F
 ClientSampled :

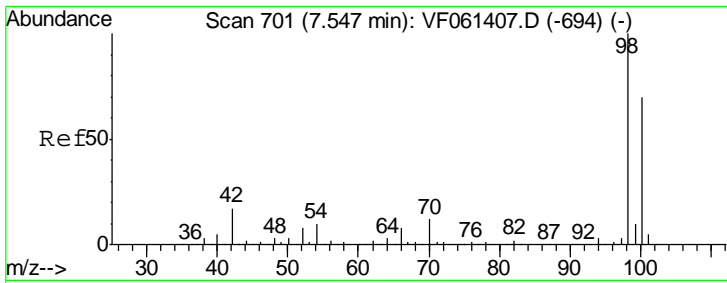
Tgt Ion	Resp	Lower	Upper
93	100		
95	0.0	62.1	93.1#
174	0.0	74.6	111.8#



#48
 Methyl methacrylate
 Concen: 8.648 ug/l
 RT: 6.68 min Scan# 614
 Delta R.T. -0.02 min
 Lab File: VF061598.D
 Acq: 11 Feb 2019 21:00

Tgt Ion	Resp	Lower	Upper
41	100		
69	0.0	51.7	77.5#
39	0.0	49.2	73.8#

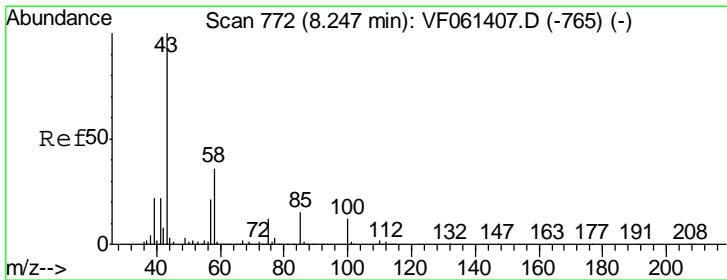
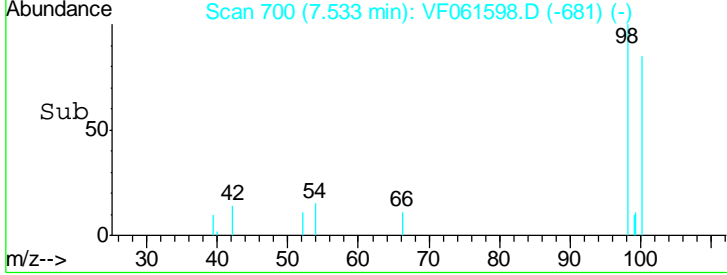
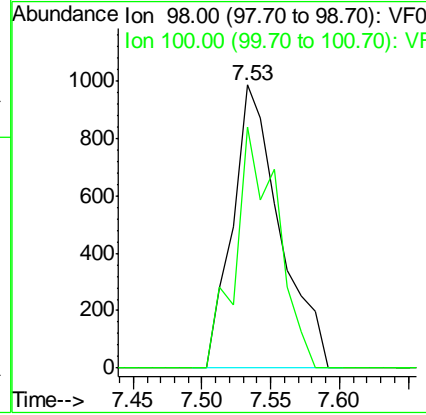
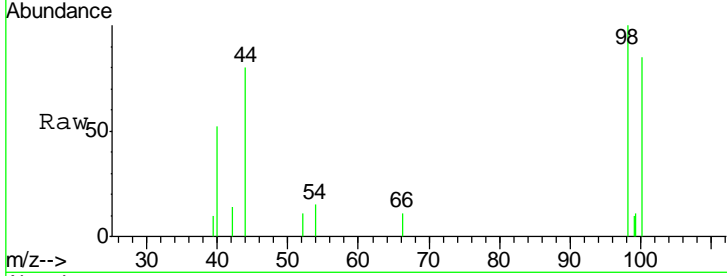




#50
 Toluene-d8
 Concen: 41.940 ug/l
 RT: 7.53 min Scan# 700
 Delta R.T. -0.01 min
 Lab File: VF061598.D
 Acq: 11 Feb 2019 21:00

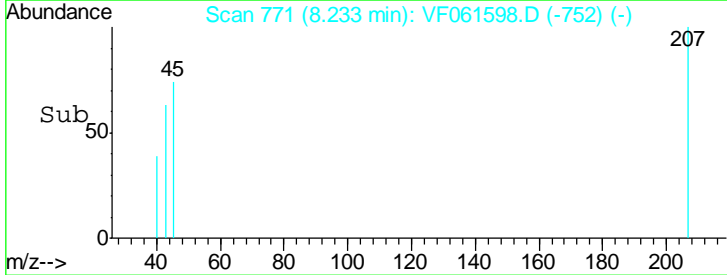
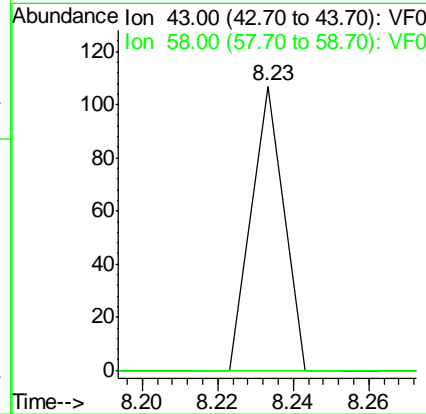
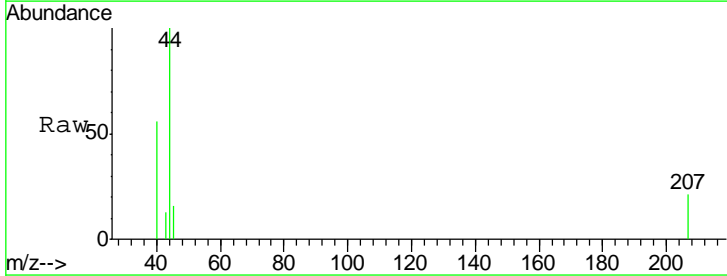
Instrument :
 MSVOA_F
 ClientSampled :

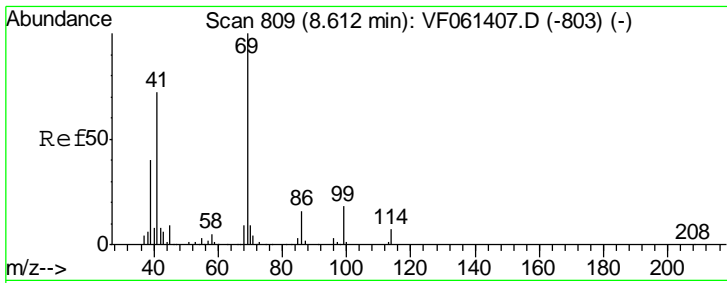
Tot Ion: 98 Resp: 2362
 Ion Ratio Lower Upper
 98 100
 100 85.2 55.6 83.4#



#51
 4-Methyl-2-Pentanone
 Concen: 5.655 ug/l
 RT: 8.23 min Scan# 771
 Delta R.T. -0.01 min
 Lab File: VF061598.D
 Acq: 11 Feb 2019 21:00

Tgt Ion: 43 Resp: 63
 Ion Ratio Lower Upper
 43 100
 58 0.0 28.8 43.2#

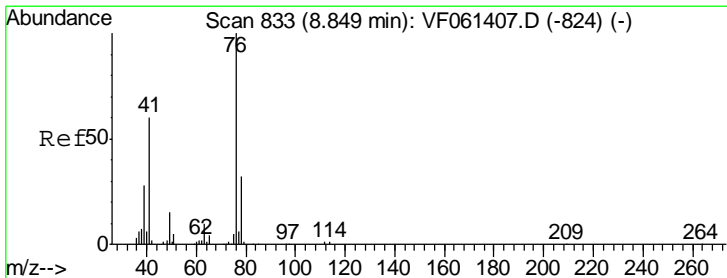
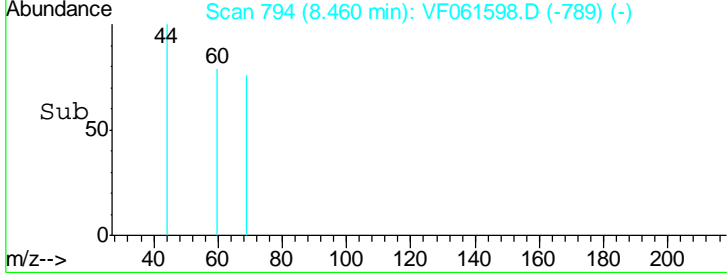
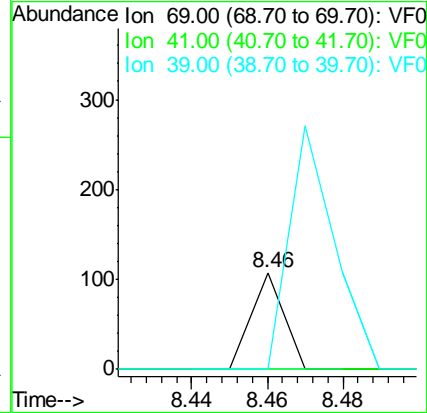
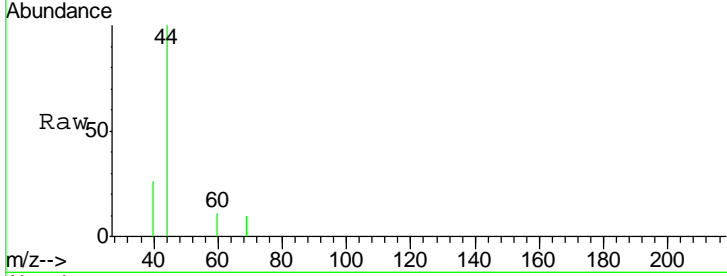




#56
 Ethyl methacrylate
 Concen: 4.377 ug/l
 RT: 8.46 min Scan# 794
 Delta R.T. -0.15 min
 Lab File: VF061598.D
 Acq: 11 Feb 2019 21:00

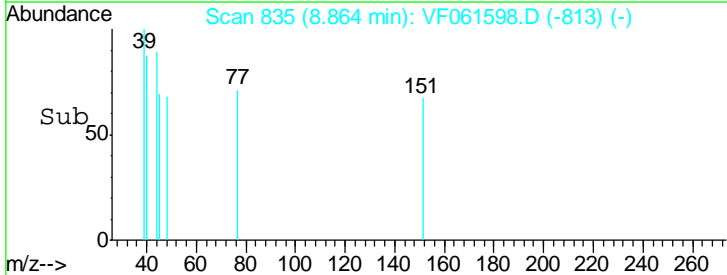
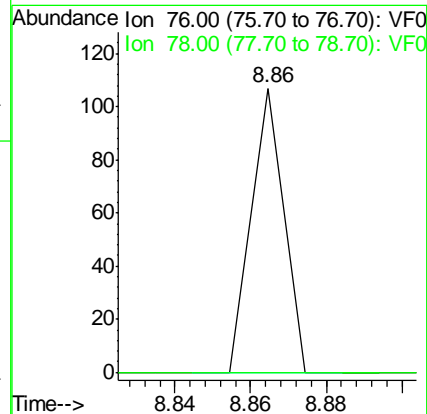
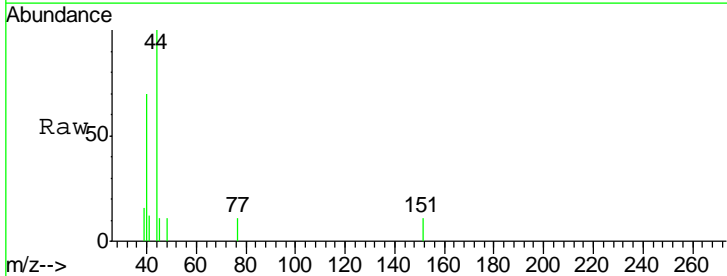
Instrument :
 MSVOA_F
 ClientSampled :

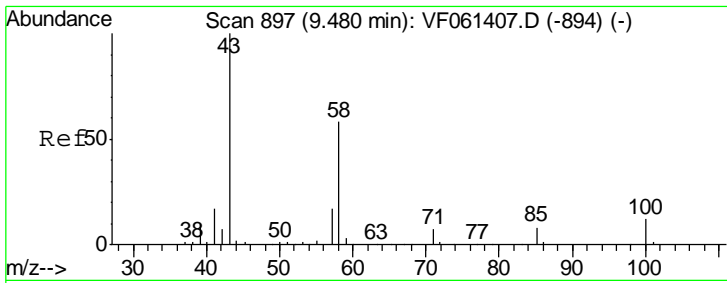
Tgt Ion	Resp	Lower	Upper
69	100		
41	0.0	57.5	86.3#
39	0.0	32.0	48.0#



#57
 1,3-Dichloropropane
 Concen: 2.674 ug/l
 RT: 8.86 min Scan# 835
 Delta R.T. 0.02 min
 Lab File: VF061598.D
 Acq: 11 Feb 2019 21:00

Tgt Ion	Resp	Lower	Upper
76	100		
78	0.0	25.3	37.9#

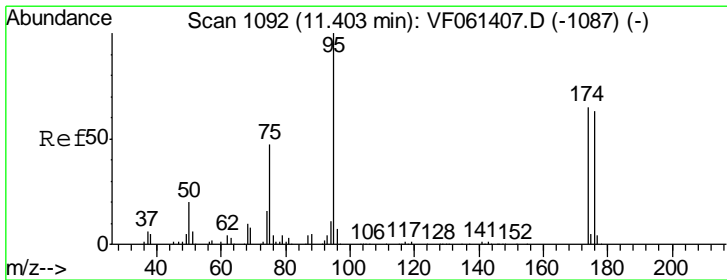
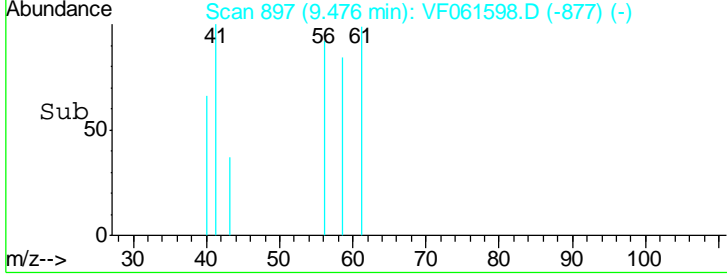
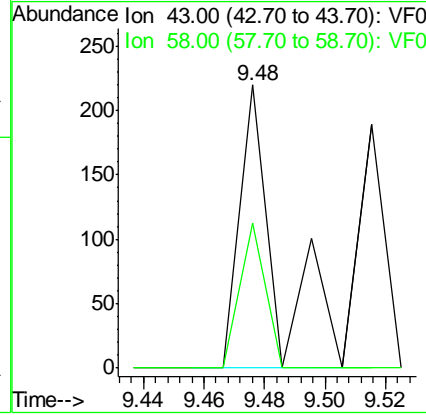
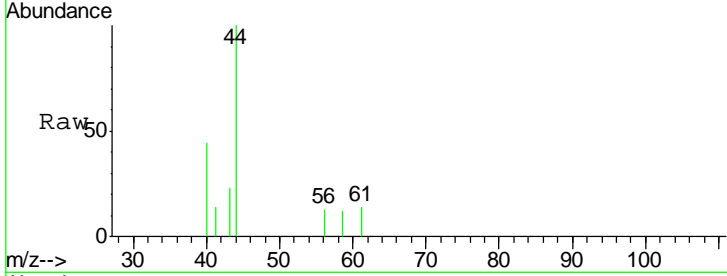




#59
 2-Hexanone
 Concen: 24.459 ug/l
 RT: 9.48 min Scan# 897
 Delta R.T. -0.00 min
 Lab File: VF061598.D
 Acq: 11 Feb 2019 21:00

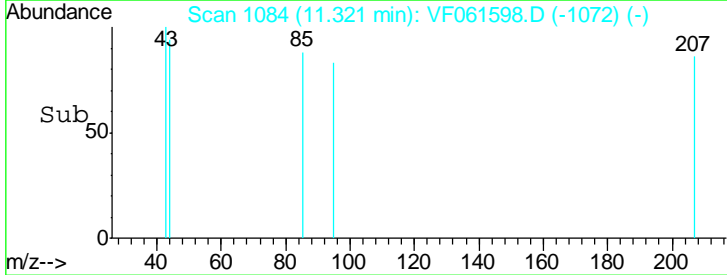
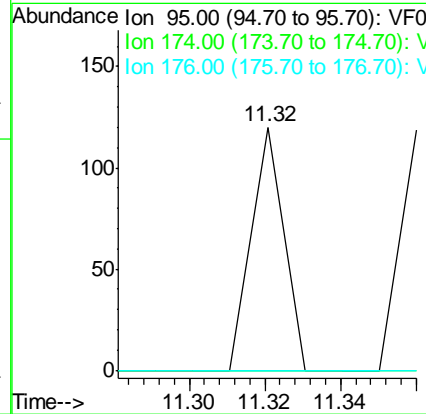
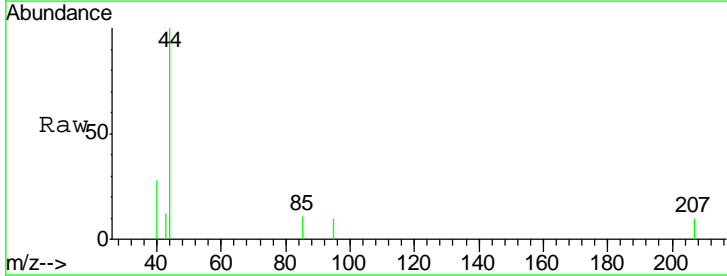
Instrument :
 MSVOA_F
 ClientSampled :

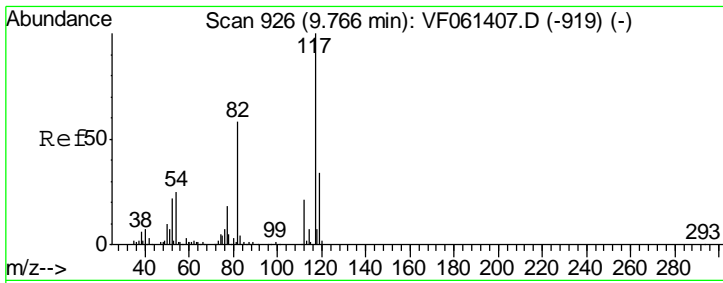
Tgt Ion	Resp	Lower	Upper
43	100		
58	51.4	25.9	77.6



#62
 4-Bromofluorobenzene
 Concen: 2.698 ug/l
 RT: 11.32 min Scan# 1084
 Delta R.T. -0.08 min
 Lab File: VF061598.D
 Acq: 11 Feb 2019 21:00

Tgt Ion	Resp	Lower	Upper
95	100		
174	0.0	0.0	130.4
176	0.0	0.0	126.2

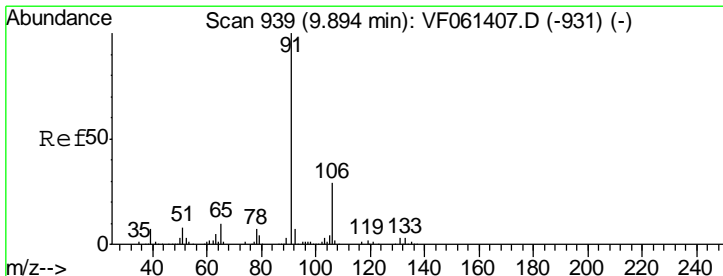
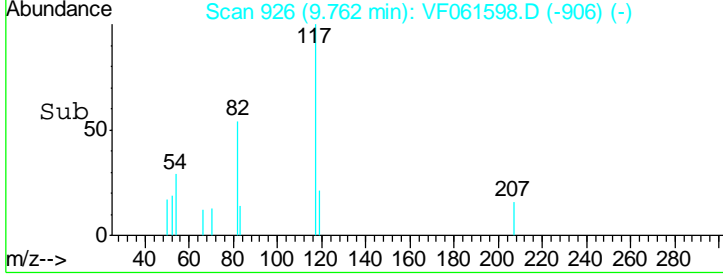
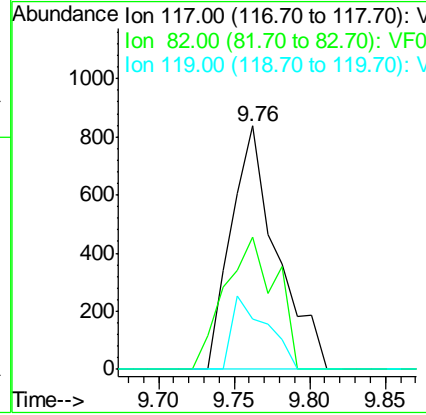
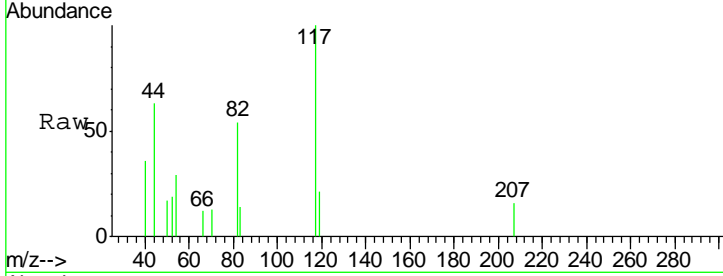




#63
 Chlorobenzene-d5
 Concen: 50.000 ug/l
 RT: 9.76 min Scan# 926
 Delta R.T. -0.00 min
 Lab File: VF061598.D
 Acq: 11 Feb 2019 21:00

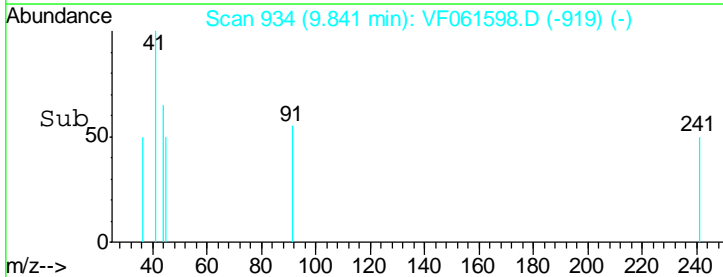
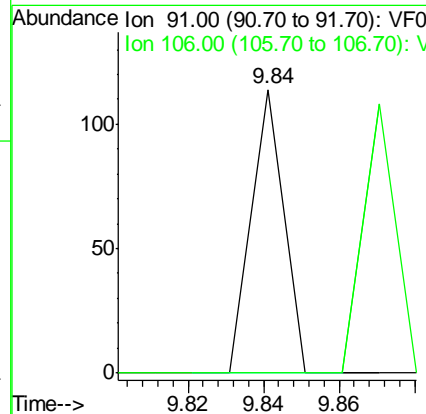
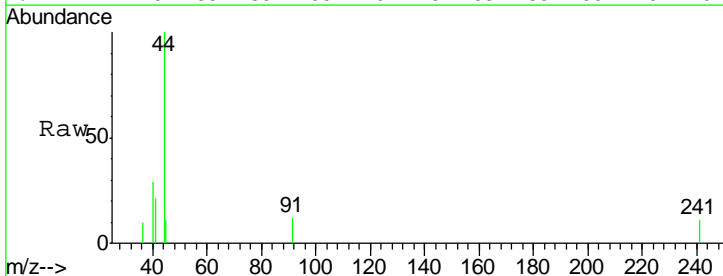
Instrument :
 MSVOA_F
 ClientSampled :

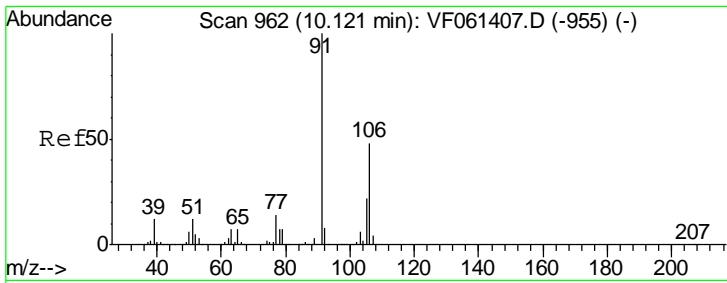
Tgt Ion	Resp	Lower	Upper
117	1763		
82	54.2	46.4	69.6
119	20.8	27.2	40.8#



#67
 Ethyl Benzene
 Concen: 1.023 ug/l
 RT: 9.84 min Scan# 934
 Delta R.T. -0.05 min
 Lab File: VF061598.D
 Acq: 11 Feb 2019 21:00

Tgt Ion	Resp	Lower	Upper
91	67		
106	0.0	23.1	34.7#

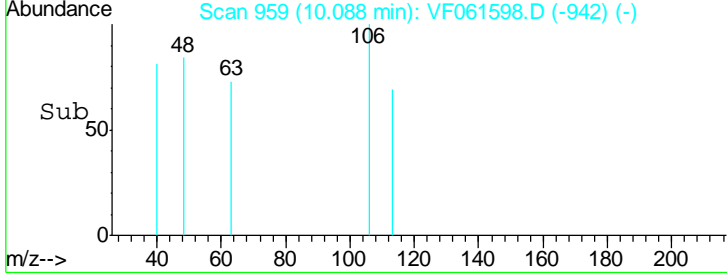
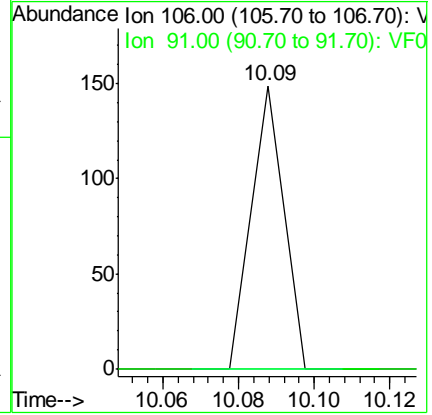
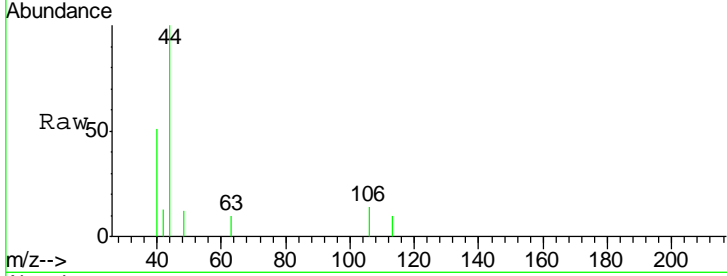




#68
 m/p-Xylenes
 Concen: 3.735 ug/l
 RT: 10.09 min Scan# 959
 Delta R.T. -0.03 min
 Lab File: VF061598.D
 Acq: 11 Feb 2019 21:00

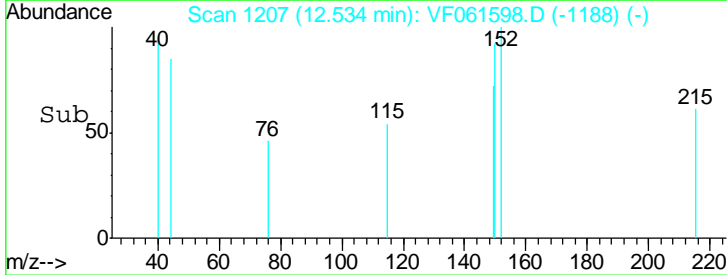
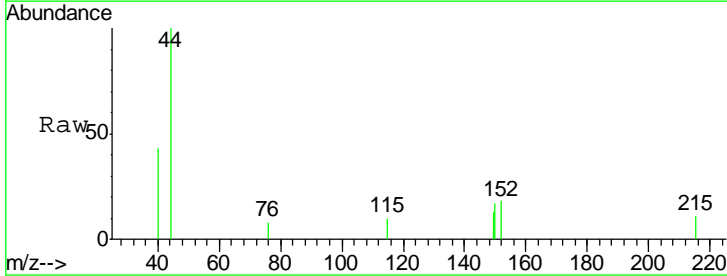
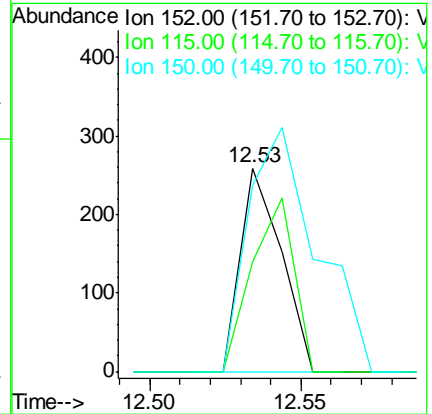
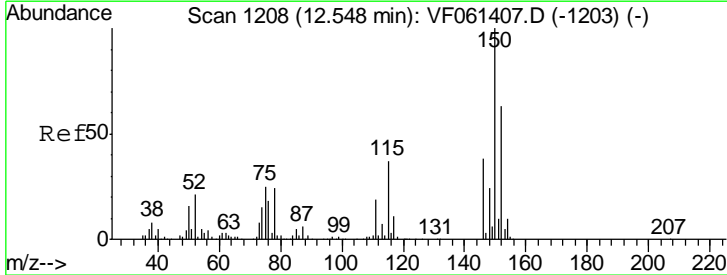
Instrument :
 MSVOA_F
 ClientSampled :

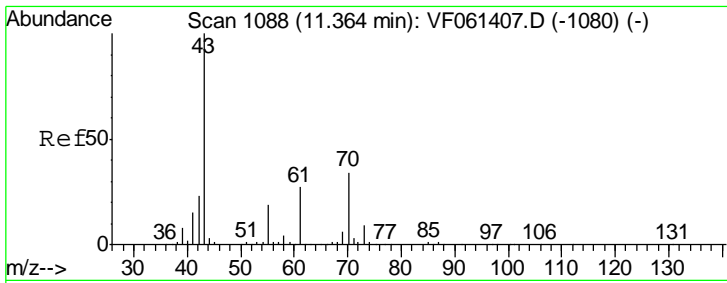
Tgt Ion	Resp	Lower	Upper
106	100		
91	0.0	166.2	249.4#



#72
 1,4-Dichlorobenzene-d4
 Concen: 50.000 ug/l
 RT: 12.53 min Scan# 1207
 Delta R.T. -0.01 min
 Lab File: VF061598.D
 Acq: 11 Feb 2019 21:00

Tgt Ion	Resp	Lower	Upper
152	100		
115	53.7	30.0	90.0
150	91.9	0.0	321.4

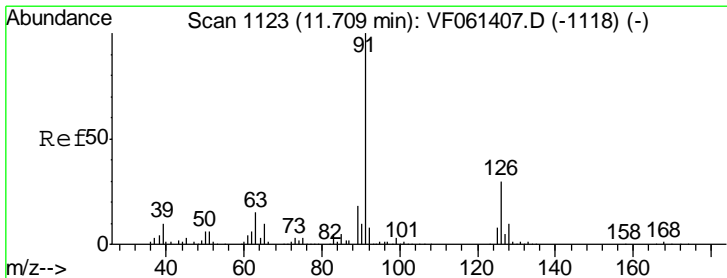
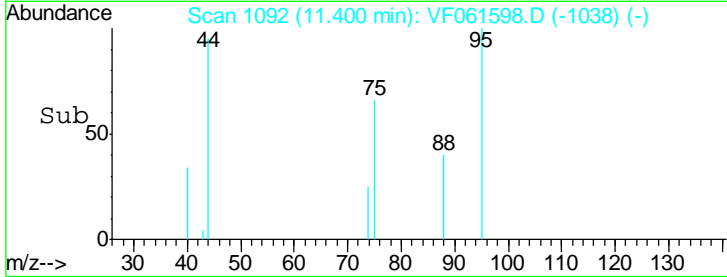
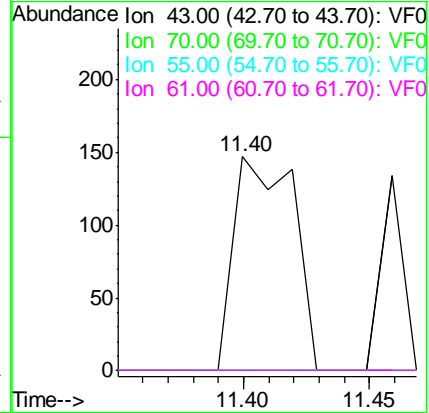
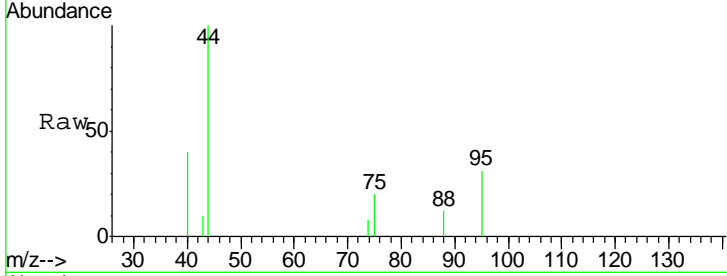




#74
 N-amyl acetate
 Concen: 51.570 ug/l
 RT: 11.40 min Scan# 1092
 Delta R.T. 0.04 min
 Lab File: VF061598.D
 Acq: 11 Feb 2019 21:00

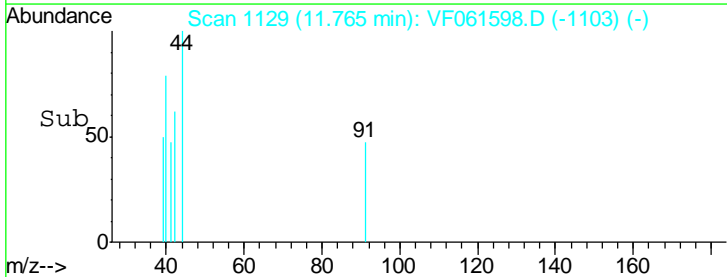
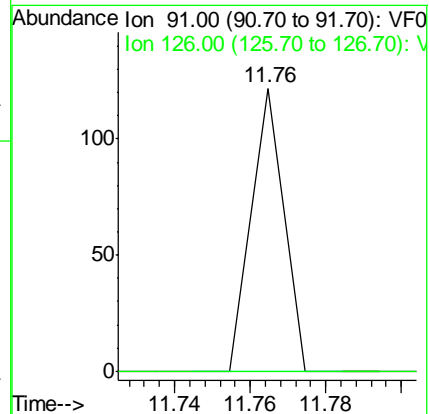
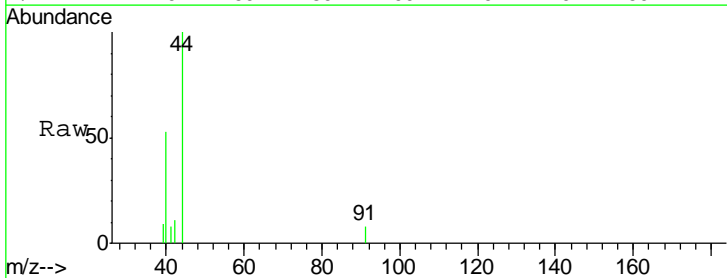
Instrument :
 MSVOA_F
 ClientSampled :

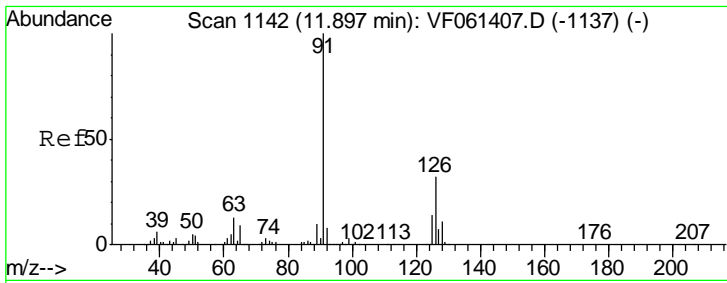
Tgt Ion	Resp	Lower	Upper
43	100		
70	0.0	27.6	41.4#
55	0.0	15.4	23.2#
61	0.0	21.8	32.6#



#79
 2-Chlorotoluene
 Concen: 5.229 ug/l
 RT: 11.76 min Scan# 1129
 Delta R.T. 0.06 min
 Lab File: VF061598.D
 Acq: 11 Feb 2019 21:00

Tgt Ion	Resp	Lower	Upper
91	100		
126	0.0	15.0	45.1#

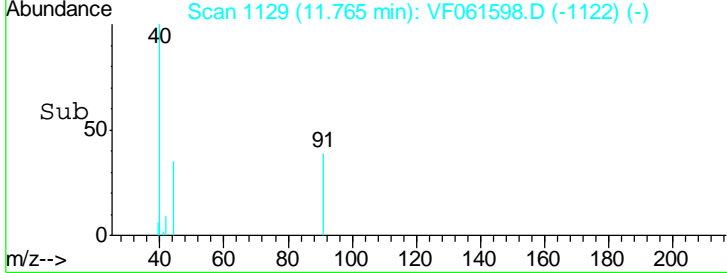
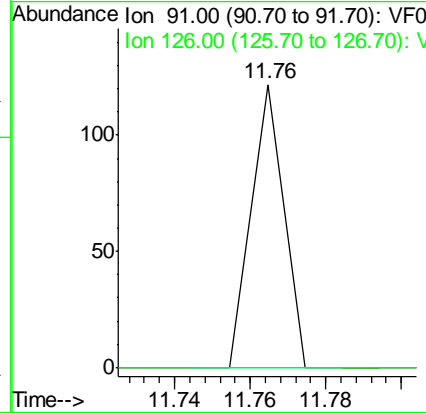
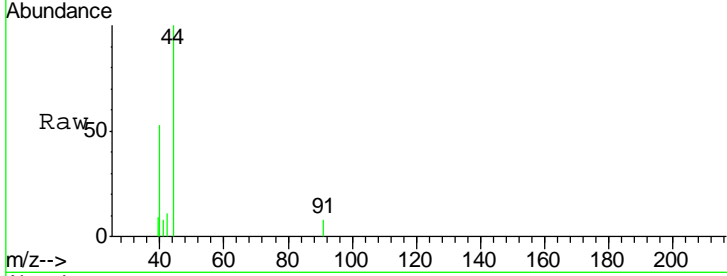




#82
 4-Chlorotoluene
 Concen: 5.182 ug/l
 RT: 11.76 min Scan# 1129
 Delta R.T. -0.13 min
 Lab File: VF061598.D
 Acq: 11 Feb 2019 21:00

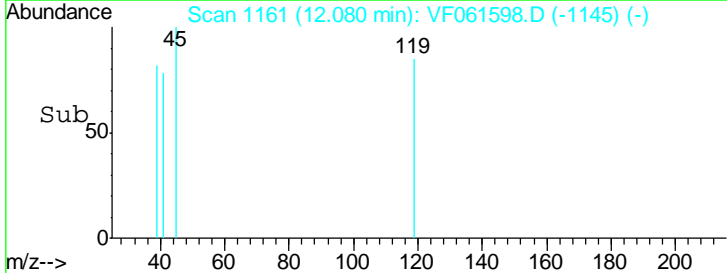
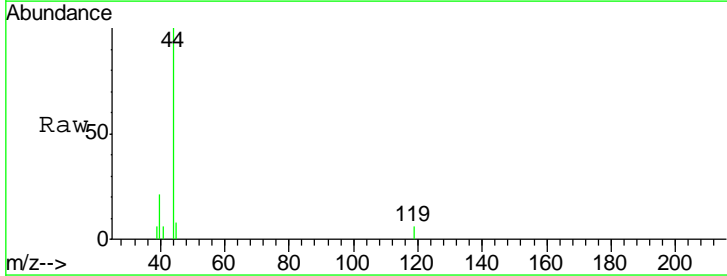
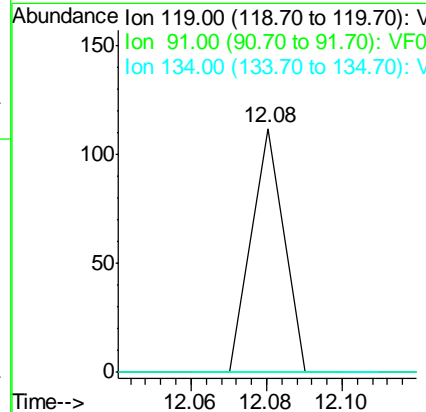
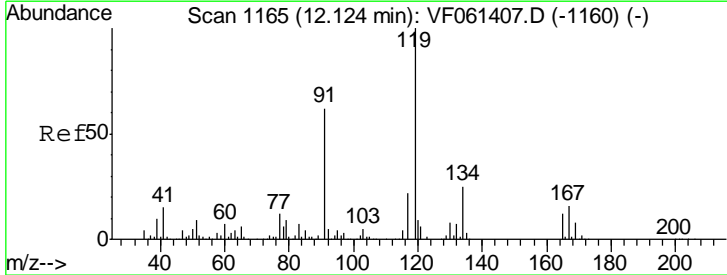
Instrument :
 MSVOA_F
 ClientSampled :

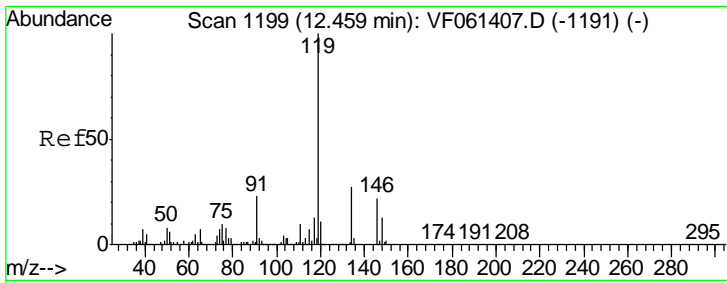
Tgt Ion: 91 Resp: 72
 Ion Ratio Lower Upper
 91 100
 126 0.0 16.0 47.9#



#83
 tert-Butylbenzene
 Concen: 3.982 ug/l
 RT: 12.08 min Scan# 1161
 Delta R.T. -0.04 min
 Lab File: VF061598.D
 Acq: 11 Feb 2019 21:00

Tgt Ion: 119 Resp: 66
 Ion Ratio Lower Upper
 119 100
 91 0.0 31.3 93.8#
 134 0.0 12.4 37.0#

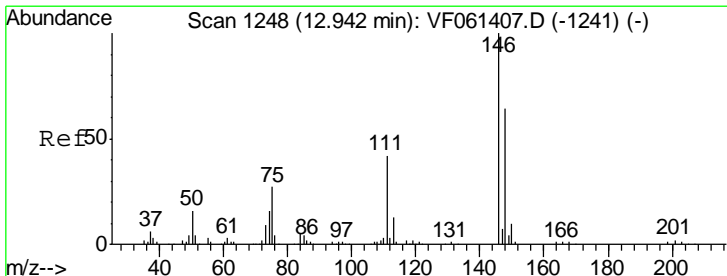
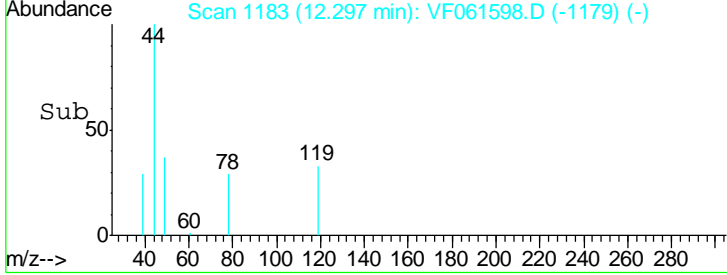
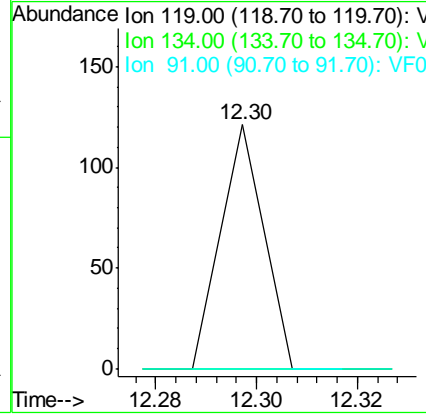
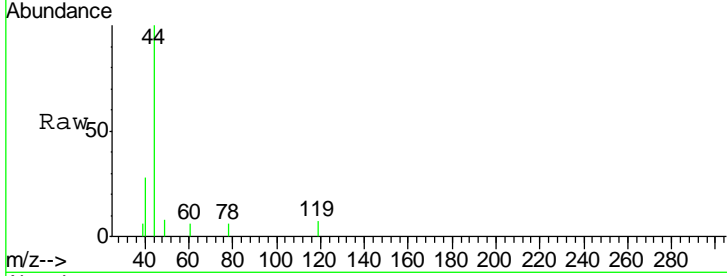




#86
 p-Isopropyltoluene
 Concen: 3.896 ug/l
 RT: 12.30 min Scan# 1183
 Delta R.T. -0.16 min
 Lab File: VF061598.D
 Acq: 11 Feb 2019 21:00

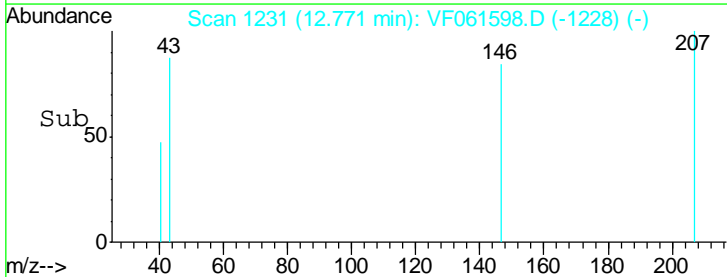
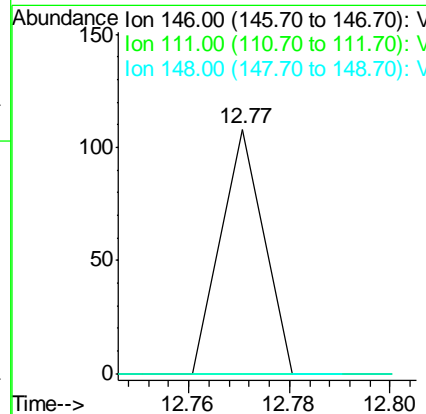
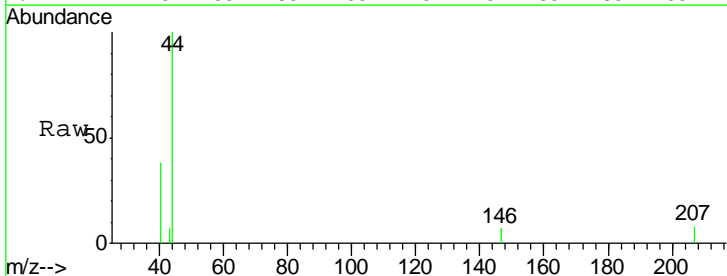
Instrument : MSVOA_F
 ClientSampled :

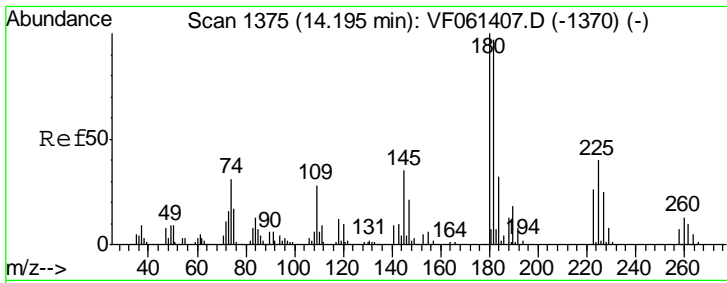
Tgt Ion	Resp	Lower	Upper
119	100		
134	0.0	13.4	40.2#
91	0.0	11.4	34.2#



#91
 1,2-Dichlorobenzene
 Concen: 8.163 ug/l
 RT: 12.77 min Scan# 1231
 Delta R.T. -0.17 min
 Lab File: VF061598.D
 Acq: 11 Feb 2019 21:00

Tgt Ion	Resp	Lower	Upper
146	100		
111	0.0	21.1	63.3#
148	0.0	31.9	95.7#





#93
 1,2,4-Trichlorobenzene
 Concen: 11.289 ug/l
 RT: 14.31 min Scan# 1387
 Delta R.T. 0.11 min
 Lab File: VF061598.D
 Acq: 11 Feb 2019 21:00

Instrument :
 MSVOA_F
 ClientSampled :

Tot Ion	180	Resp	62
Ion Ratio	Lower	Upper	
180	100		
182	0.0	48.5	145.6#
145	0.0	17.5	52.6#

