

Data Path : Z:\VOASRV\HPCHEM1\MSVOA F\DATA\VF031119\  
 Data File : VF061889.D  
 Acq On : 11 Mar 2019 15:02  
 Operator : VA/AP  
 Sample : K1824-03  
 Misc : 5.10g/5mL/MSVOA-F/SOIL  
 ALS Vial : 8 Sample Multiplier: 1

Instrument :  
 MSVOA\_F  
 ClientSampled :  
 TP-25

Integration Parameters: RTEINT.P  
 Integrator: RTE  
 Smoothing : ON Filtering: 5  
 Sampling : 1 Min Area: 3 % of largest Peak  
 Start Thrs: 0.2 Max Peaks: 100  
 Stop Thrs : 0 Peak Location: TOP

If leading or trailing edge < 100 prefer < Baseline drop else tangent >  
 Peak separation: 5

Method : Z:\VOASRV\HPCHEM1\MSVOA\_F\METHODS\82F030419S.M  
 Title : SW846 8260

Signal : TIC

peak #	R.T. min	first scan	max scan	last scan	PK TY	peak height	corr. area	corr. % max.	% of total
1	1.067	43	44	47	rBV3	7292	11475	1.50%	0.249%
2	2.182	153	157	159	rBV4	5961	11215	1.46%	0.243%
3	2.379	172	177	183	rBV3	11881	28688	3.74%	0.623%
4	2.803	216	220	224	rVB7	3530	8749	1.14%	0.190%
5	2.921	229	232	235	rBV4	3943	10052	1.31%	0.218%
6	3.039	242	244	247	rVB4	6709	11314	1.47%	0.246%
7	4.006	338	342	346	rBV4	6150	19165	2.50%	0.416%
8	4.114	346	353	367	rVB	119722	384862	50.17%	8.355%
9	4.864	418	429	441	rBV2	210252	744243	97.02%	16.157%
10	5.593	497	503	515	rBV	220404	589440	76.84%	12.796%
11	6.294	573	574	576	rBV	13356	8657	1.13%	0.188%
12	7.546	695	701	715	rBV	310285	767093	100.00%	16.653%
13	8.207	761	768	771	rBV5	3100	9268	1.21%	0.201%
14	9.774	921	927	934	rBV	260436	589413	76.84%	12.796%
15	11.411	1087	1093	1099	rBV	313221	575932	75.08%	12.503%
16	11.559	1104	1108	1113	rVV	35921	70540	9.20%	1.531%
17	11.875	1138	1140	1145	rBV5	3921	8047	1.05%	0.175%
18	12.456	1194	1199	1204	rBV9	4851	15476	2.02%	0.336%
19	12.545	1204	1208	1218	rVB	449899	705067	91.91%	15.306%
20	13.285	1279	1283	1286	rVB2	16322	25836	3.37%	0.561%
21	14.300	1382	1386	1388	rBV5	4936	11859	1.55%	0.257%

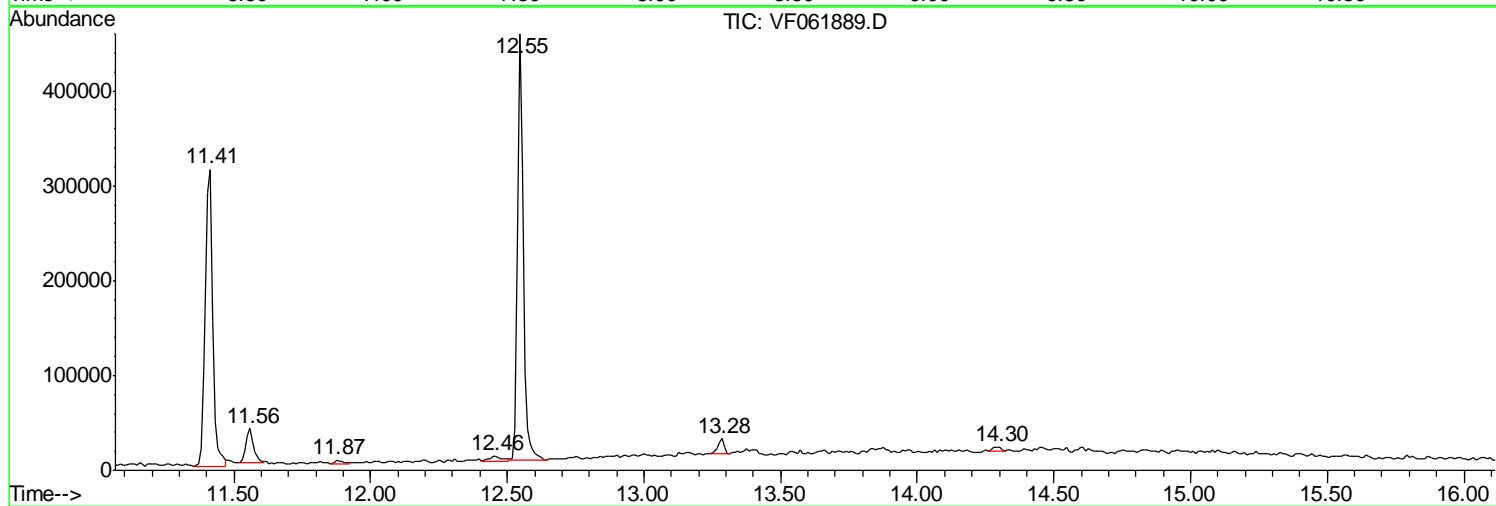
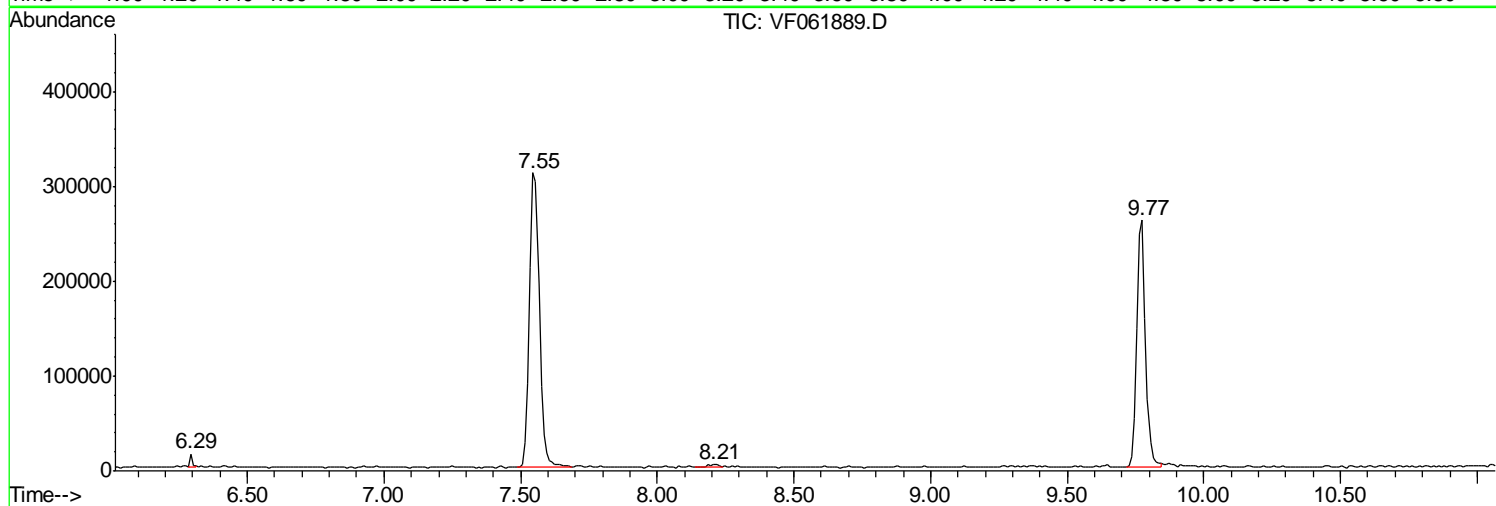
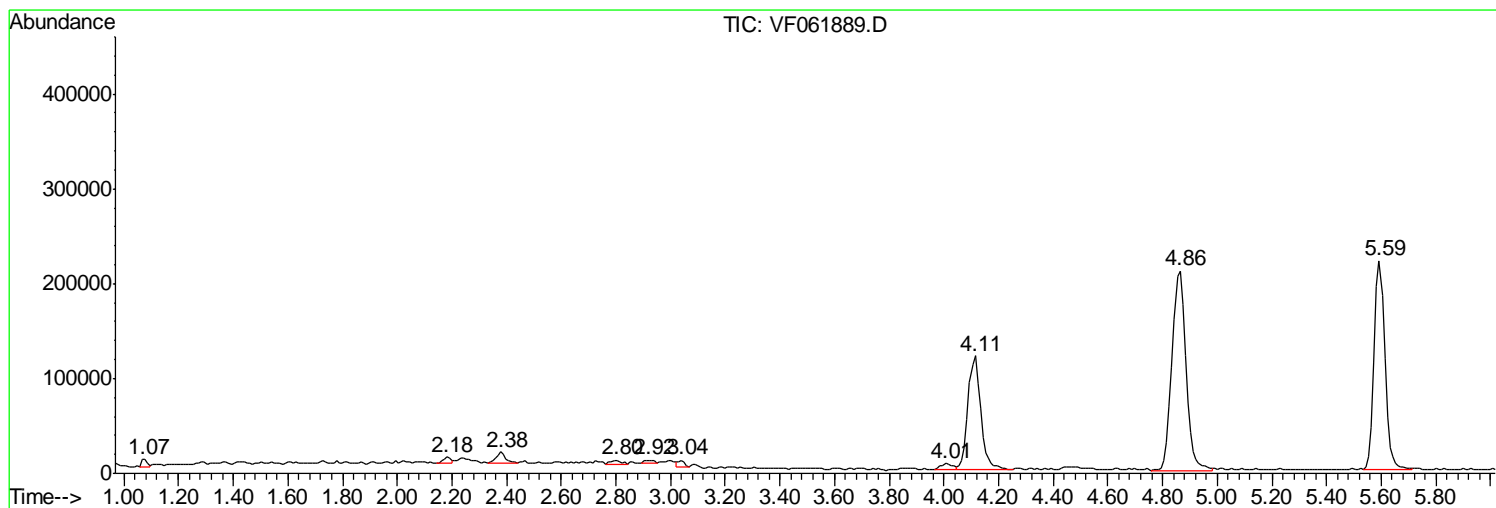
Sum of corrected areas: 4606391

Data Path : Z:\VOASRV\HPCHEM1\MSVOA F\DATA\VF031119\  
Data File : VF061889.D  
Acq On : 11 Mar 2019 15:02  
Operator : VA/AP  
Sample : K1824-03  
Misc : 5.10µ/5mL/MSVOA-F/SOIL  
ALS Vial : 8 Sample Multiplier: 1

Instrument :  
MSVOA\_F  
ClientSampled :  
TP-25

Quant Method : Z:\VOASRV\HPCHEM1\MSVOA\_F\METHODS\82F030419S.M  
Quant Title : SW846 8260

TIC Library : C:\DATABASE\NIST11.L  
TIC Integration Parameters: LSCINT.P



Data Path : Z:\VOASRV\HPCHEM1\MSVOA\_F\DATA\VF031119\  
Data File : VF061889.D  
Acq On : 11 Mar 2019 15:02  
Operator : VA/AP  
Sample : K1824-03  
Misc : 5.10g/5mL/MSVOA-F/SOIL  
ALS Vial : 8 Sample Multiplier: 1

Instrument :  
MSVOA\_F  
ClientSampleId :  
TP-25

Quant Method : Z:\VOASRV\HPCHEM1\MSVOA\_F\METHODS\82F030419S.M  
Quant Title : SW846 8260

TIC Library : C:\DATABASE\NIST11.L  
TIC Integration Parameters: LSCINT.P

No Library Search Compounds Detected

\*\*\*\*\*

Data Path : Z:\VOASRV\HPCHEM1\MSVOA\_F\DATA\VF031119\  
Data File : VF061889.D  
Acq On : 11 Mar 2019 15:02  
Operator : VA/AP  
Sample : K1824-03  
Misc : 5.10g/5mL/MSVOA-F/SOIL  
ALS Vial : 8 Sample Multiplier: 1

Instrument :  
MSVOA\_F  
ClientSampleId :  
TP-25

Quant Method : Z:\VOASRV\HPCHEM1\MSVOA\_F\METHODS\82F030419S.M  
Quant Title : SW846 8260

TIC Library : C:\DATABASE\NIST11.L  
TIC Integration Parameters: LSCINT.P

TIC Top Hit name	RT	EstConc	Units	Response	--Internal Standard--			
					#	RT	Resp	Conc

---