

Data Path : Z:\VOASRV\HPCHEM1\MSVOA F\DATA\VF032119\  
 Data File : VF062068.D  
 Acq On : 21 Mar 2019 18:50  
 Operator : VA/AP  
 Sample : K1694-01  
 Misc : 7.01µ/5mL/MSVOA-F/SOIL  
 ALS Vial : 16 Sample Multiplier: 1

Instrument :  
 MSVOA\_F  
 ClientSampleId :  
 EO-02-032019-A

Manual Integrations  
 APPROVED

MMDadoda  
 3/23/2019 2:59:27 AM

Quant Time: Mar 22 08:40:24 2019  
 Quant Method : Z:\VOASRV\HPCHEM1\MSVOA\_F\METHODS\82F031619S.M  
 Quant Title : SW846 8260  
 QLast Update : Fri Mar 22 03:22:44 2019  
 Response via : Initial Calibration

Internal Standards	R.T.	QIon	Response	Conc	Units	Dev(Min)
1) Pentafluorobenzene	4.89	168	260694	50.00	ug/l	0.02
34) 1,4-Difluorobenzene	5.61	114	416815	50.00	ug/l	0.01
63) Chlorobenzene-d5	9.79	117	273312	50.00	ug/l	0.02
72) 1,4-Dichlorobenzene-d4	12.56	152	96159	50.00	ug/l	0.01
System Monitoring Compounds						
33) 1,2-Dichloroethane-d4	4.86	65	102628	54.69	ug/l	0.02
Spiked Amount	50.000		Recovery	=	109.38%	
35) Dibromofluoromethane	4.13	113	158299	56.56	ug/l	0.02
Spiked Amount	50.000		Recovery	=	113.12%	
50) Toluene-d8	7.57	98	288758	35.29	ug/l	0.02
Spiked Amount	50.000		Recovery	=	70.58%	
62) 4-Bromofluorobenzene	11.42	95	110781	34.08	ug/l	0.01
Spiked Amount	50.000		Recovery	=	68.16%	
Target Compounds						
						Qvalue
16) Acetone	2.25	43	17545	41.636	ug/l #	89
20) Methylene Chloride	2.28	84	14011m	6.373	ug/l	
52) Toluene	7.64	92	1971532	323.520	ug/l	83
67) Ethyl Benzene	9.91	91	24266	2.785	ug/l #	85
68) m/p-Xylenes	10.15	106	34274	10.459	ug/l	90
69) o-Xylene	10.73	106	36724	10.473	ug/l	95
73) Isopropylbenzene	11.13	105	17717	2.667	ug/l	91
78) n-propylbenzene	11.61	91	55420	7.255	ug/l	96
80) 1,3,5-Trimethylbenzene	11.83	105	120828	22.516	ug/l	99
84) 1,2,4-Trimethylbenzene	12.22	105	232667	43.286	ug/l	95
85) sec-Butylbenzene	12.32	105	26057	3.436	ug/l #	76
86) p-Isopropyltoluene	12.43	119	66428	10.499	ug/l	97
89) n-Butylbenzene	12.85	91	41746	7.022	ug/l #	81
95) Naphthalene	14.47	128	43274	12.338	ug/l #	81

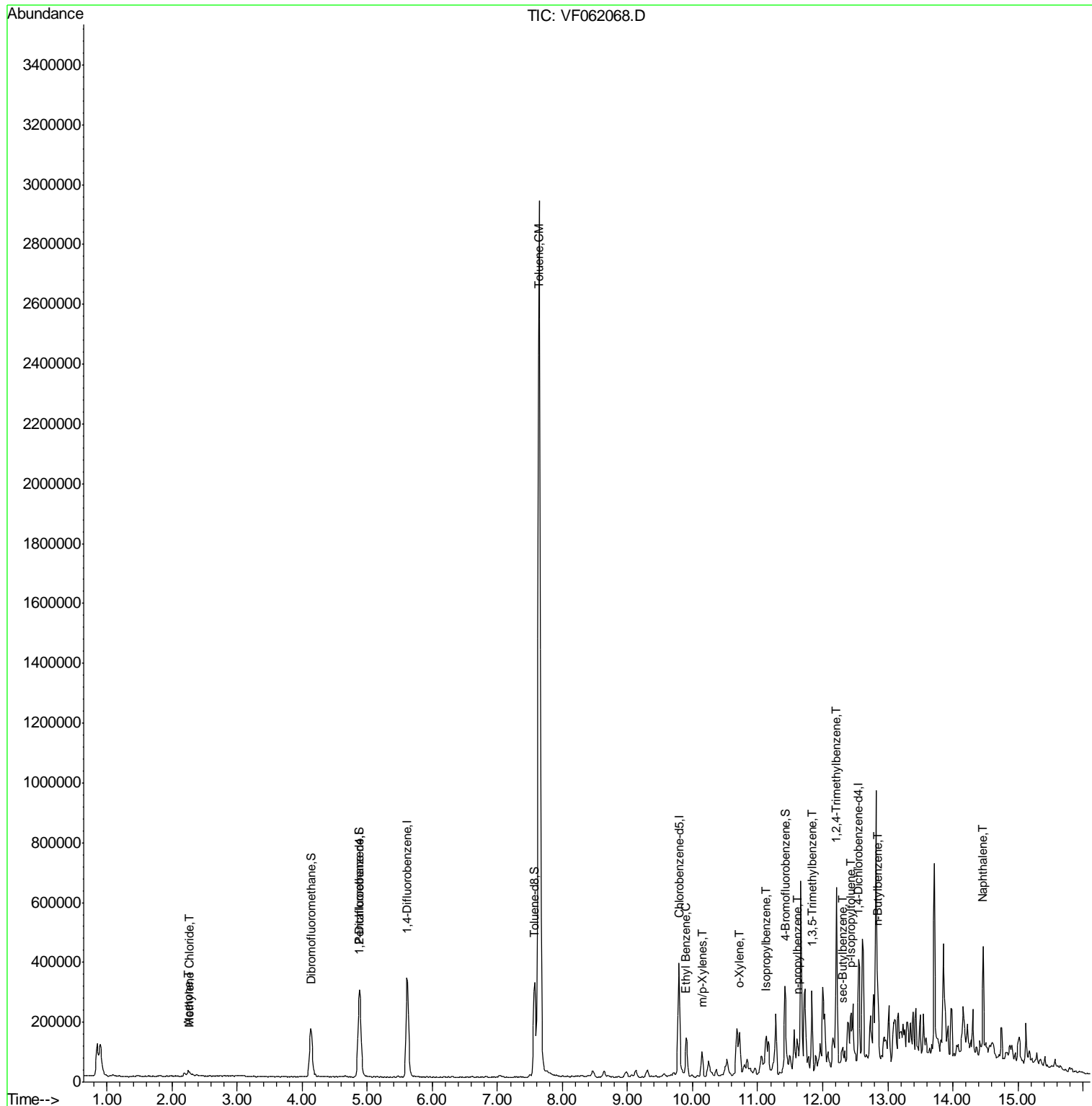
(#) = qualifier out of range (m) = manual integration (+) = signals summed

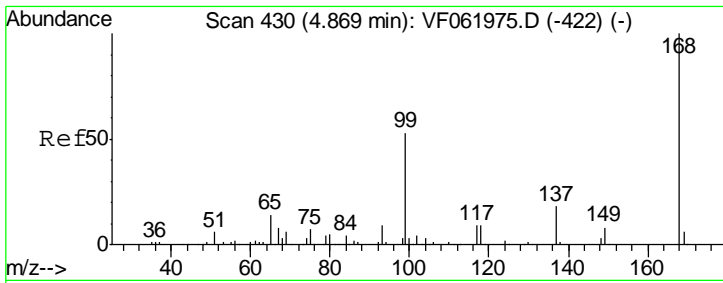
Data Path : Z:\VOASRV\HPCHEM1\MSVOA F\DATA\VF032119\  
 Data File : VF062068.D  
 Acq On : 21 Mar 2019 18:50  
 Operator : VA/AP  
 Sample : K1694-01  
 Misc : 7.01µ/5mL/MSVOA-F/SOIL  
 ALS Vial : 16 Sample Multiplier: 1

**Instrument :**  
 MSVOA\_F  
**Client Sampled :**  
 EO-02-032019-A

**Manual Integrations**  
**APPROVED**  
 MMDadoda  
 3/23/2019 2:59:27 AM

Quant Time: Mar 22 08:40:24 2019  
 Quant Method : Z:\VOASRV\HPCHEM1\MSVOA\_F\METHODS\82F031619S.M  
 Quant Title : SW846 8260  
 QLast Update : Fri Mar 22 03:22:44 2019  
 Response via : Initial Calibration



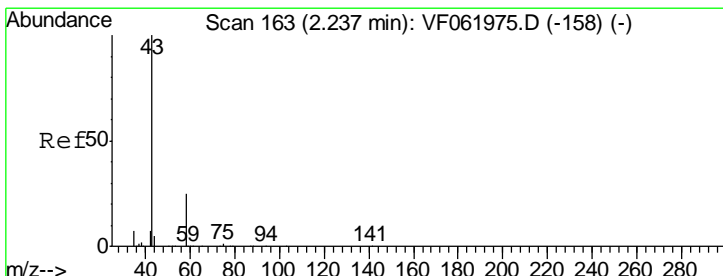
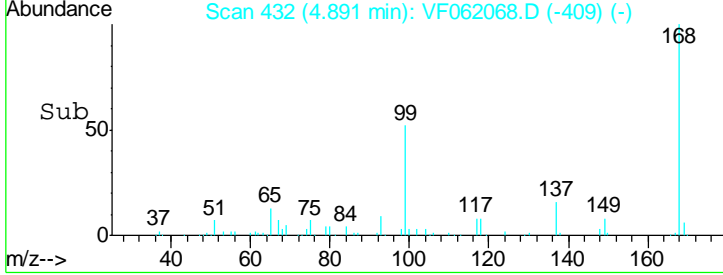
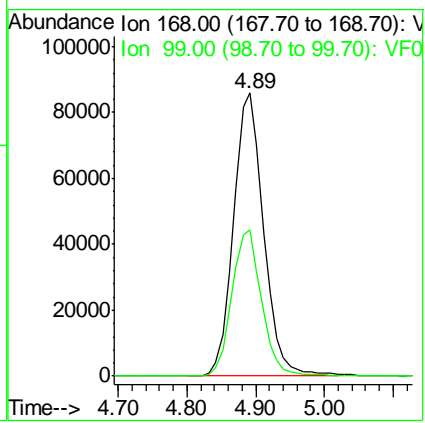
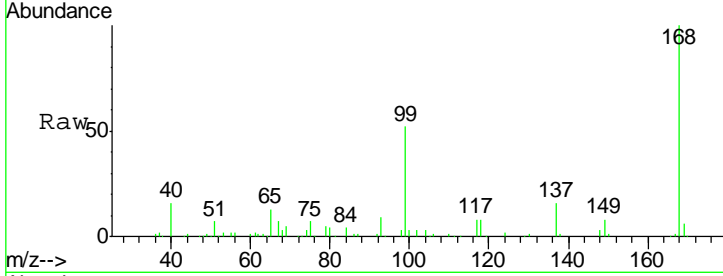


#1  
 Pentafluorobenzene  
 Concen: 50.000 ug/l  
 RT: 4.89 min Scan# 432  
 Delta R.T. 0.02 min  
 Lab File: VF062068.D  
 Acq: 21 Mar 2019 18:50

Instrument : MSVOA\_F  
 ClientSampled : EO-02-032019-A

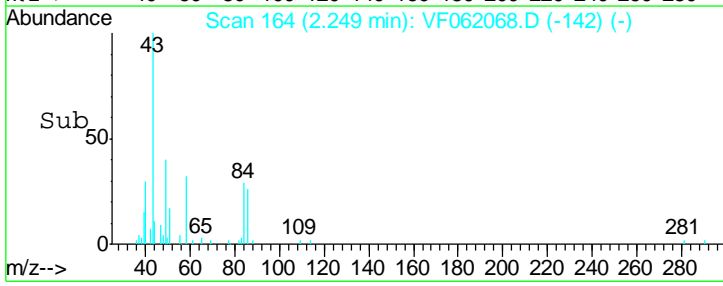
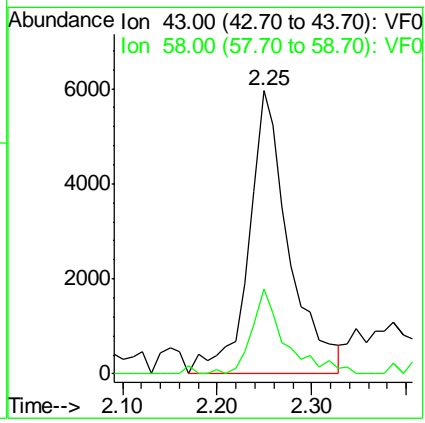
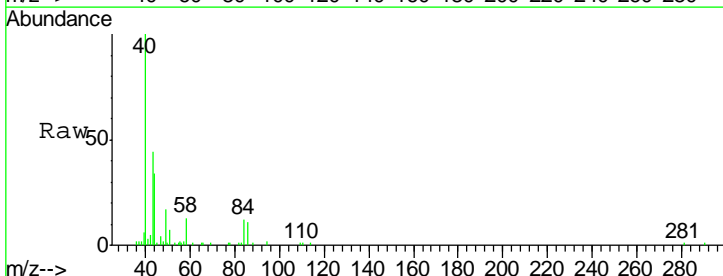
Tgt Ion	Resp	Lower	Upper
168	100		
99	51.5	42.4	63.6

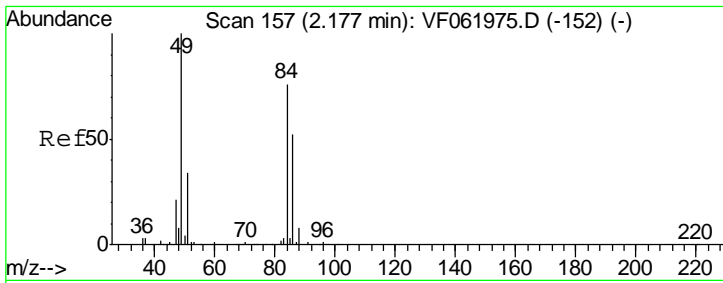
Manual Integrations  
**APPROVED**  
 MMDadoda  
 3/23/2019 2:59:27 AM



#16  
 Acetone  
 Concen: 41.636 ug/l  
 RT: 2.25 min Scan# 164  
 Delta R.T. 0.01 min  
 Lab File: VF062068.D  
 Acq: 21 Mar 2019 18:50

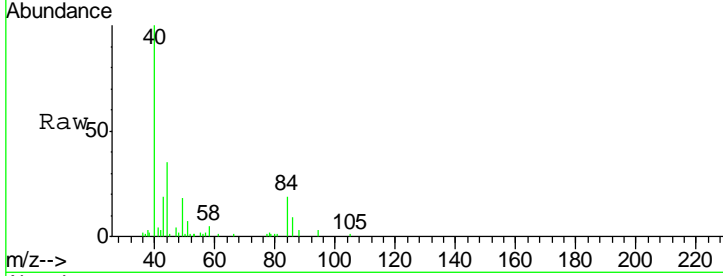
Tgt Ion	Resp	Lower	Upper
43	100		
58	30.2	19.9	29.9#





#20  
 Methylene Chloride  
 Concen: 6.373 ug/l m  
 RT: 2.28 min Scan# 167  
 Delta R.T. 0.10 min  
 Lab File: VF062068.D  
 Acq: 21 Mar 2019 18:50

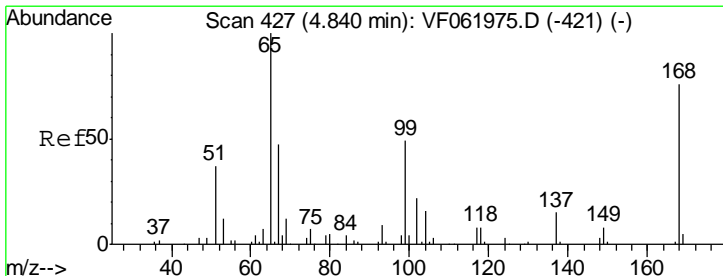
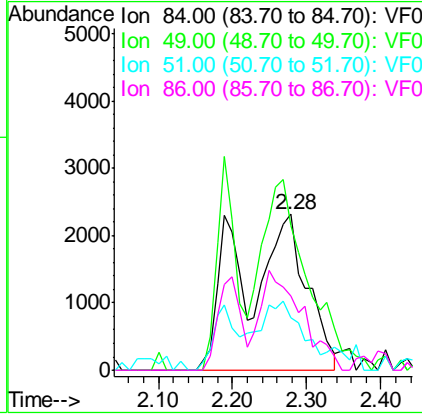
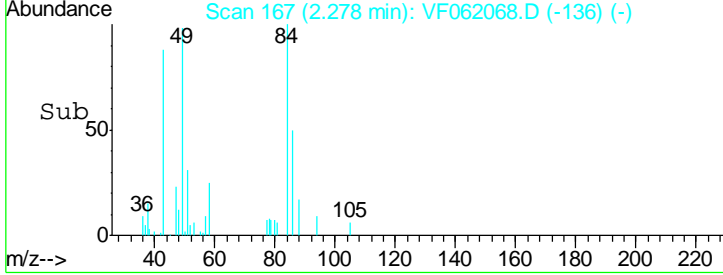
Instrument : MSVOA\_F  
 ClientSampled : EO-02-032019-A



Tgt Ion: 84 Resp: 14011

Ion	Ratio	Lower	Upper
84	100		
49	93.1	107.0	160.6#
51	34.0	37.2	55.8#
86	47.5	55.3	82.9#

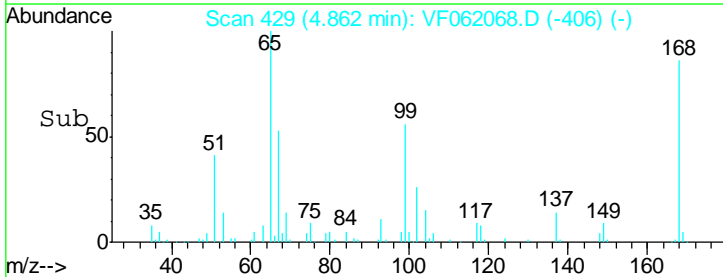
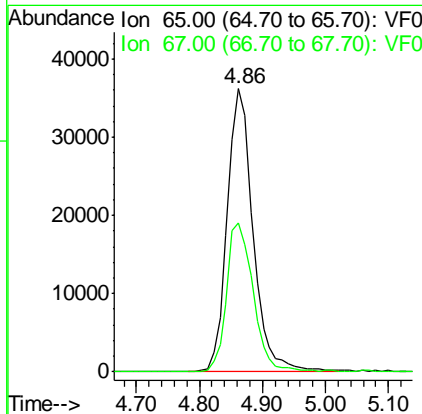
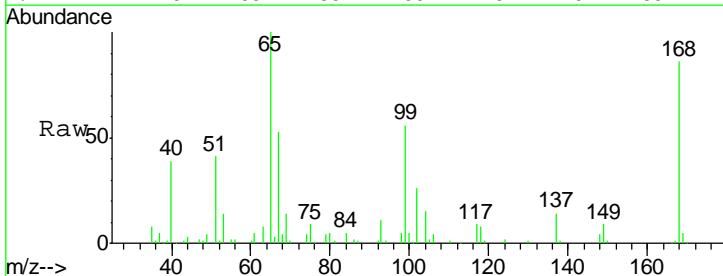
Manual Integrations  
**APPROVED**  
 MMDadoda  
 3/23/2019 2:59:27 AM

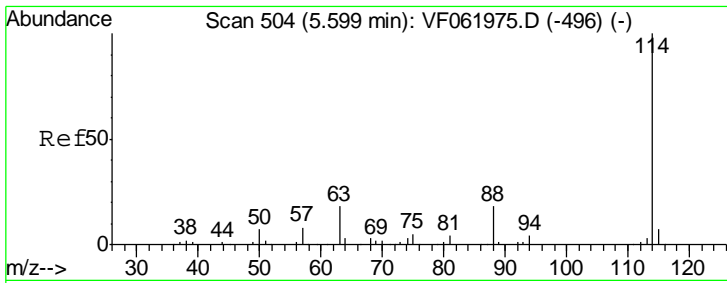


#33  
 1,2-Dichloroethane-d4  
 Concen: 54.689 ug/l  
 RT: 4.86 min Scan# 429  
 Delta R.T. 0.02 min  
 Lab File: VF062068.D  
 Acq: 21 Mar 2019 18:50

Tgt Ion: 65 Resp: 102628

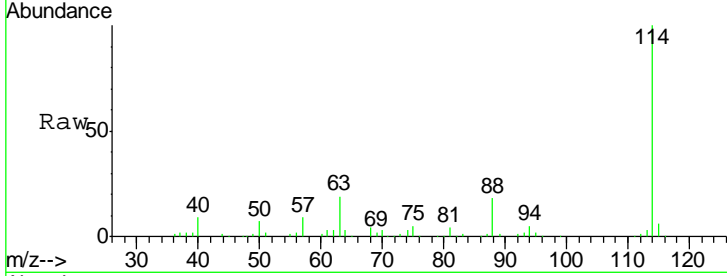
Ion	Ratio	Lower	Upper
65	100		
67	52.7	0.0	109.4





#34  
 1,4-Difluorobenzene  
 Concen: 50.000 ug/l  
 RT: 5.61 min Scan# 505  
 Delta R.T. 0.01 min  
 Lab File: VF062068.D  
 Acq: 21 Mar 2019 18:50

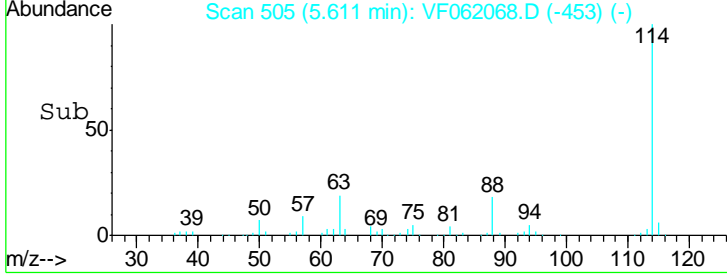
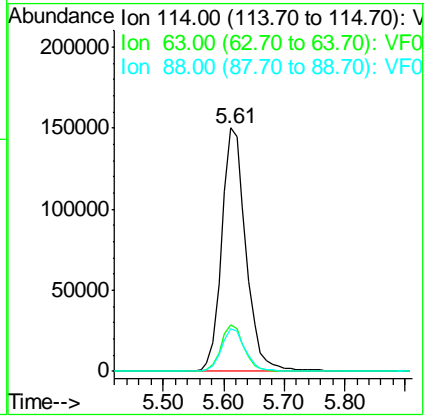
Instrument :  
 MSVOA\_F  
 ClientSampled :  
 EO-02-032019-A



Tgt Ion: 114 Resp: 416815

Ion	Ratio	Lower	Upper
114	100		
63	19.0	0.0	36.4
88	17.7	0.0	36.4

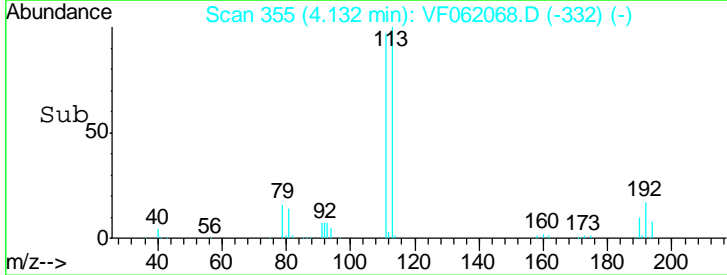
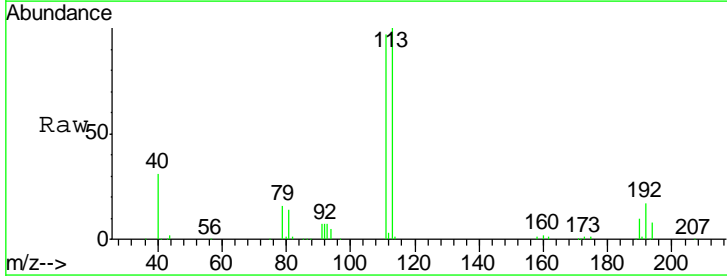
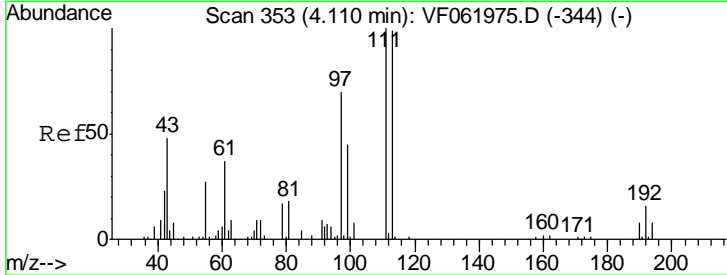
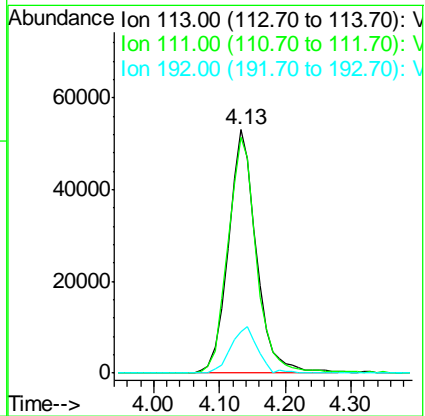
Manual Integrations  
**APPROVED**  
 MMDadoda  
 3/23/2019 2:59:27 AM

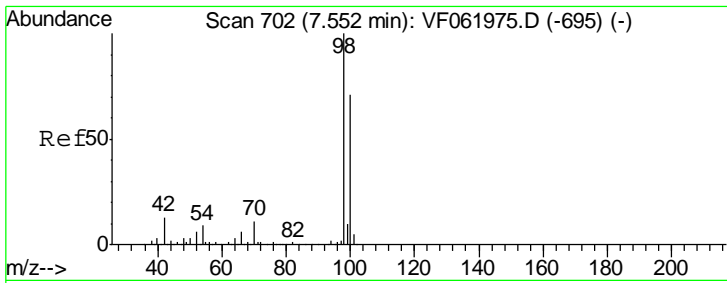


#35  
 Dibromofluoromethane  
 Concen: 56.556 ug/l  
 RT: 4.13 min Scan# 355  
 Delta R.T. 0.02 min  
 Lab File: VF062068.D  
 Acq: 21 Mar 2019 18:50

Tgt Ion: 113 Resp: 158299

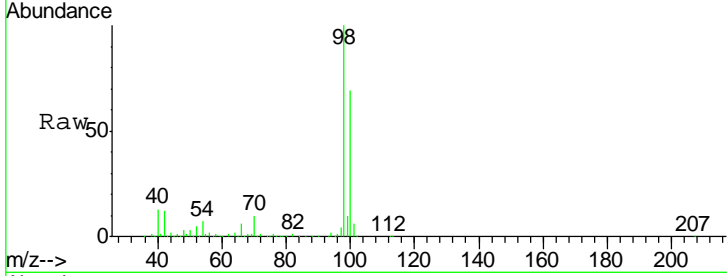
Ion	Ratio	Lower	Upper
113	100		
111	96.8	80.8	121.2
192	16.8	13.0	19.6





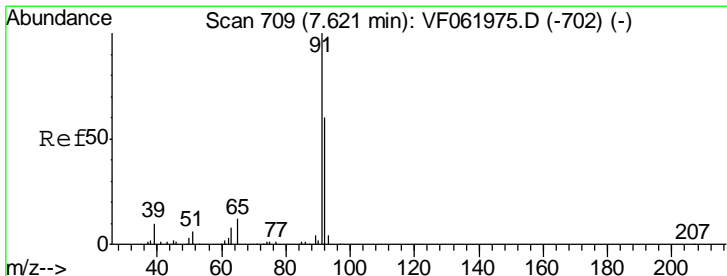
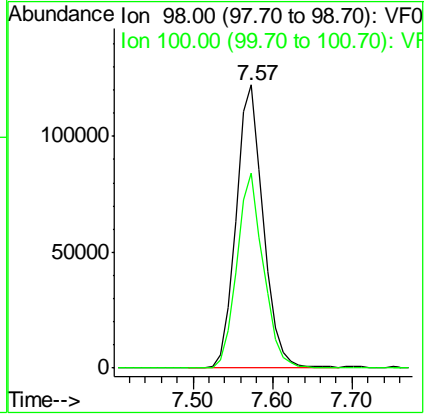
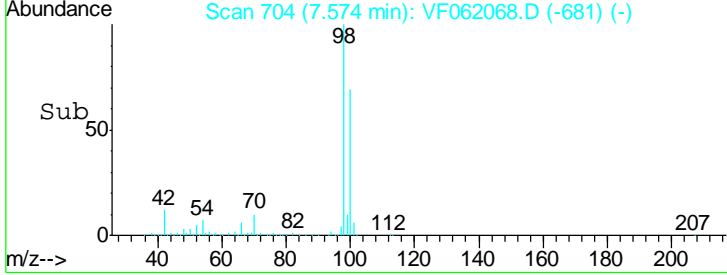
#50  
 Toluene-d8  
 Concen: 35.291 ug/l  
 RT: 7.57 min Scan# 704  
 Delta R.T. 0.02 min  
 Lab File: VF062068.D  
 Acq: 21 Mar 2019 18:50

**Instrument :**  
 MSVOA\_F  
**ClientSampled :**  
 EO-02-032019-A

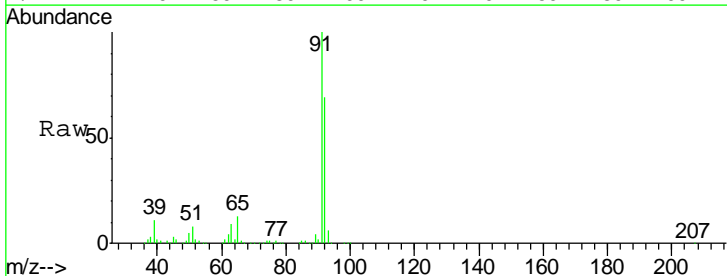


Tgt Ion: 98 Resp: 288758  
 Ion Ratio Lower Upper  
 98 100  
 100 69.0 56.8 85.2

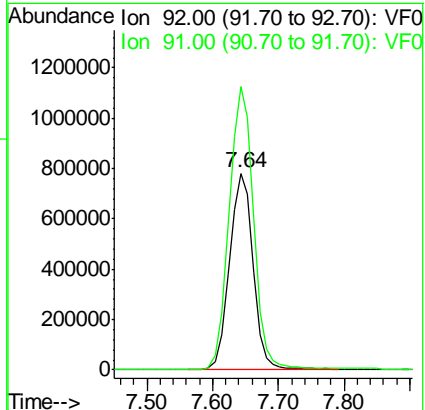
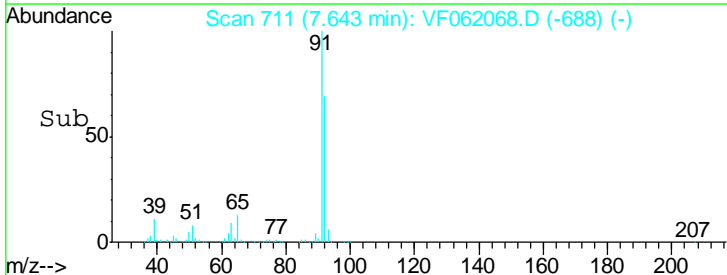
**Manual Integrations**  
**APPROVED**  
 MMDadoda  
 3/23/2019 2:59:27 AM

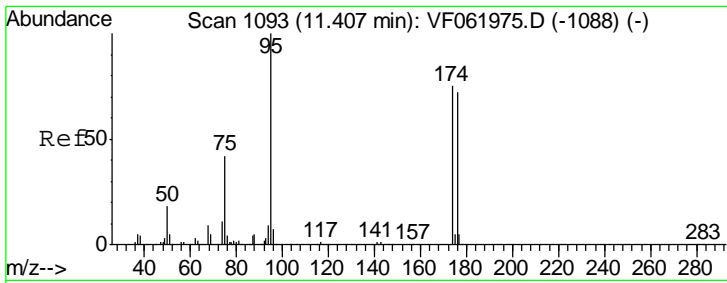


#52  
 Toluene  
 Concen: 323.520 ug/l  
 RT: 7.64 min Scan# 711  
 Delta R.T. 0.02 min  
 Lab File: VF062068.D  
 Acq: 21 Mar 2019 18:50



Tgt Ion: 92 Resp: 1971532  
 Ion Ratio Lower Upper  
 92 100  
 91 143.9 134.0 201.0



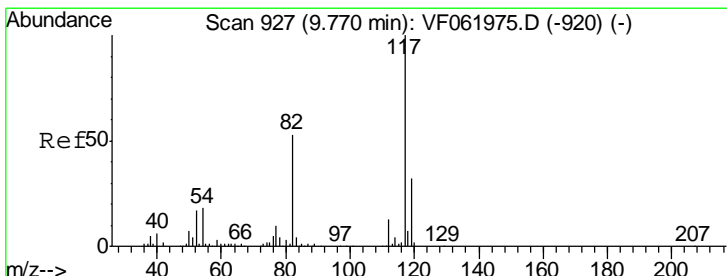
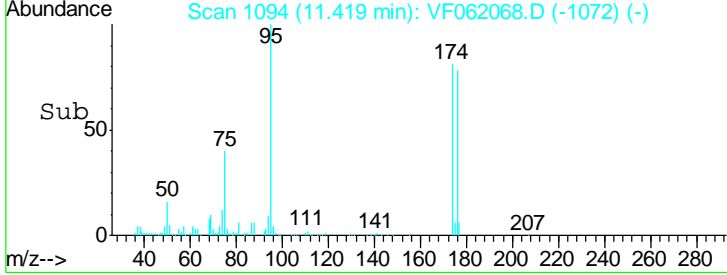
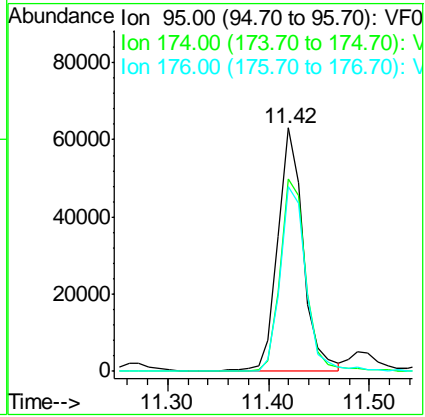
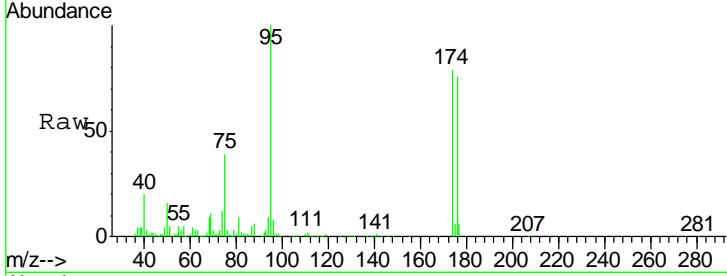


#62  
 4-Bromofluorobenzene  
 Concen: 34.081 ug/l  
 RT: 11.42 min Scan# 1094  
 Delta R.T. 0.01 min  
 Lab File: VF062068.D  
 Acq: 21 Mar 2019 18:50

Instrument : MSVOA\_F  
 ClientSampled : EO-02-032019-A

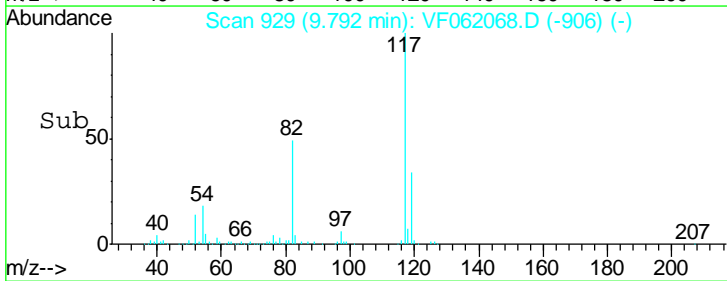
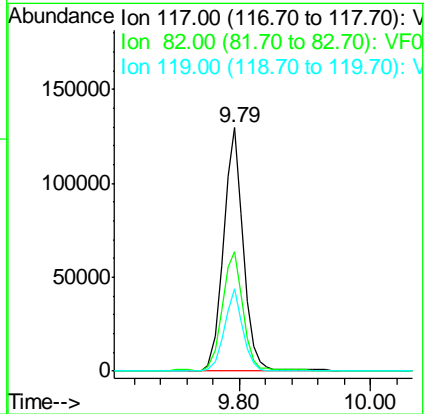
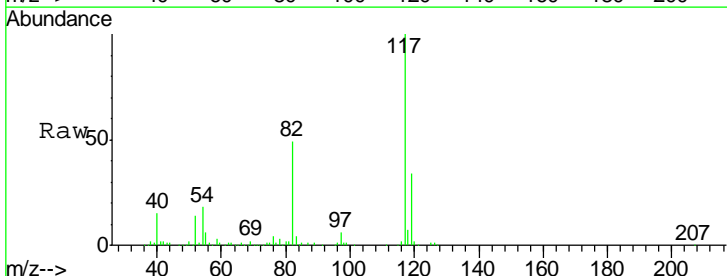
Tgt Ion	Resp	Lower	Upper
95	110781		
95	100		
174	79.1	0.0	149.4
176	75.7	0.0	143.4

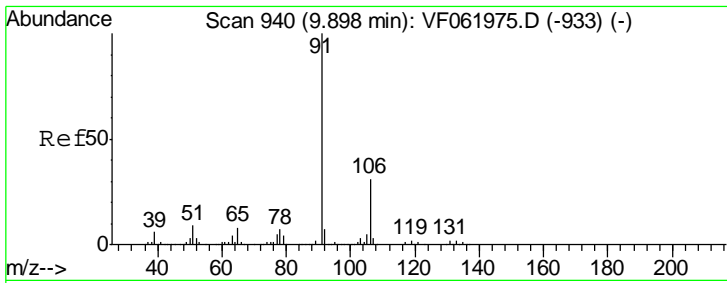
Manual Integrations  
**APPROVED**  
 MMDadoda  
 3/23/2019 2:59:27 AM



#63  
 Chlorobenzene-d5  
 Concen: 50.000 ug/l  
 RT: 9.79 min Scan# 929  
 Delta R.T. 0.02 min  
 Lab File: VF062068.D  
 Acq: 21 Mar 2019 18:50

Tgt Ion	Resp	Lower	Upper
117	273312		
117	100		
82	49.0	42.5	63.7
119	34.0	25.4	38.0



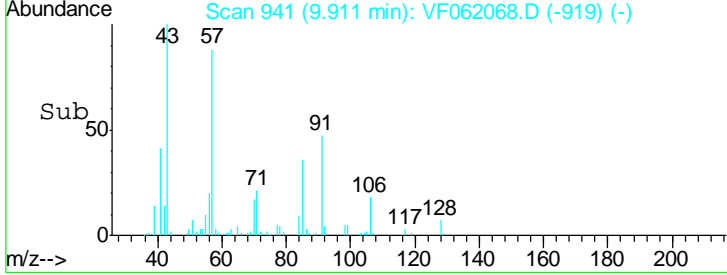
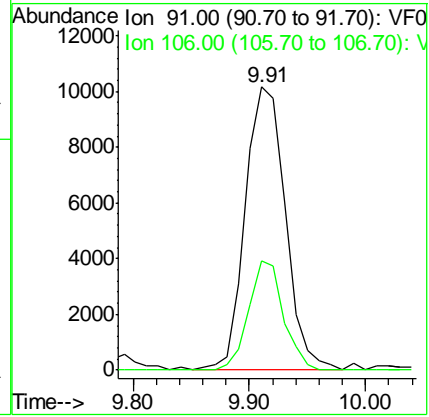
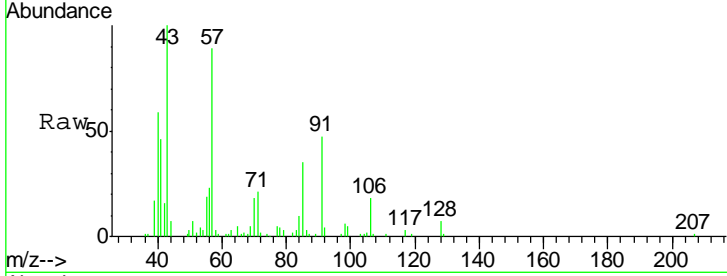


#67  
 Ethyl Benzene  
 Concen: 2.785 ug/l  
 RT: 9.91 min Scan# 941  
 Delta R.T. 0.01 min  
 Lab File: VF062068.D  
 Acq: 21 Mar 2019 18:50

Instrument : MSVOA\_F  
 Client Sampled : EO-02-032019-A

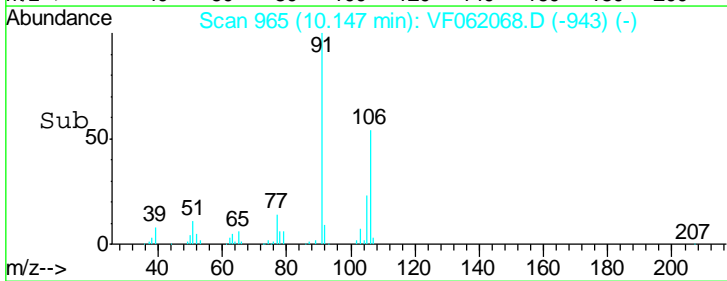
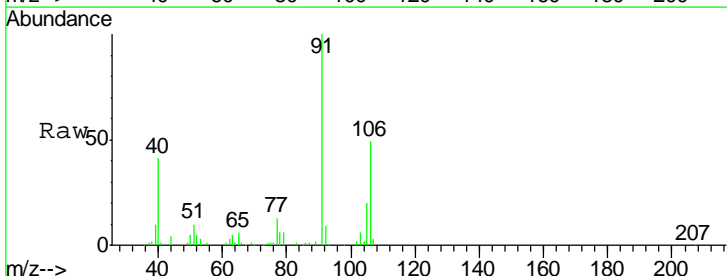
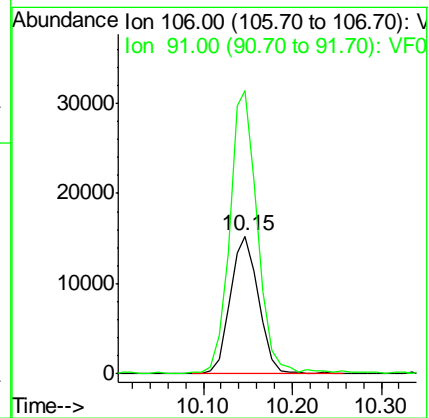
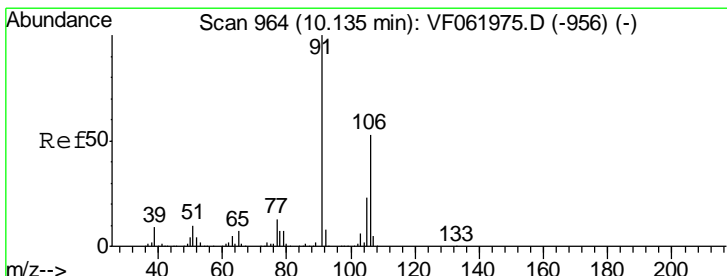
Tgt Ion	Resp	Lower	Upper
91	100		
106	38.7	24.4	36.6#

Manual Integrations  
**APPROVED**  
 MMDadoda  
 3/23/2019 2:59:27 AM

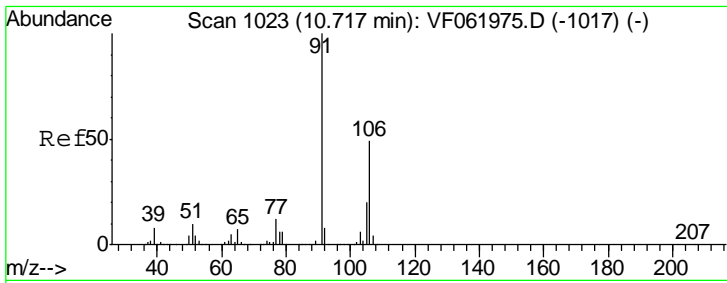


#68  
 m/p-Xylenes  
 Concen: 10.459 ug/l  
 RT: 10.15 min Scan# 965  
 Delta R.T. 0.01 min  
 Lab File: VF062068.D  
 Acq: 21 Mar 2019 18:50

Tgt Ion	Resp	Lower	Upper
106	100		
91	205.2	151.9	227.9





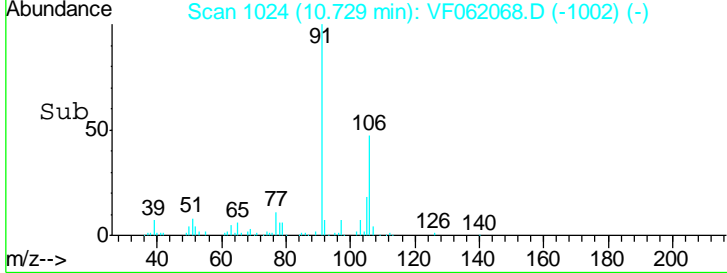
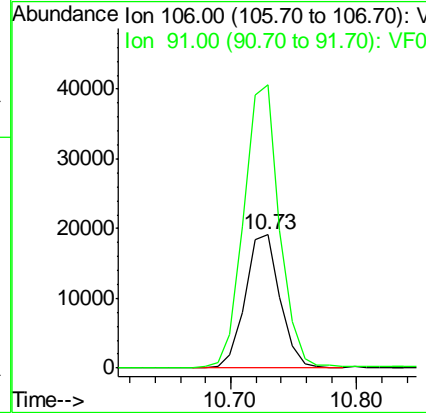
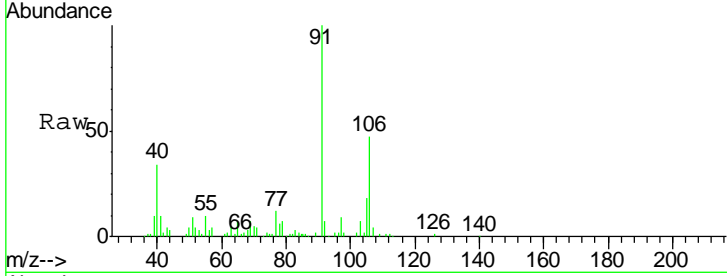


#69  
 o-Xylene  
 Concen: 10.473 ug/l  
 RT: 10.73 min Scan# 1024  
 Delta R.T. 0.01 min  
 Lab File: VF062068.D  
 Acq: 21 Mar 2019 18:50

**Instrument :**  
 MSVOA\_F  
**Client Sampled :**  
 EO-02-032019-A

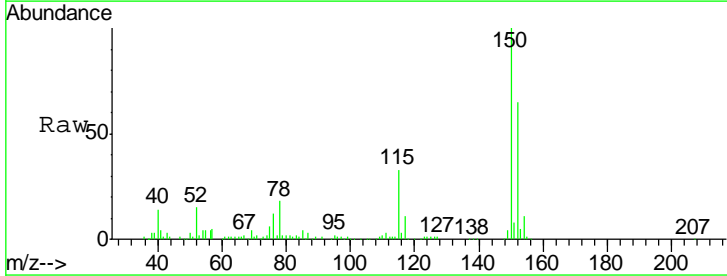
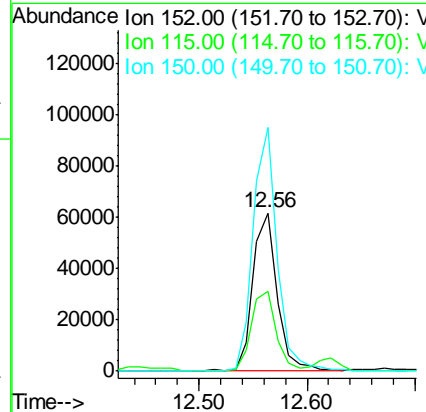
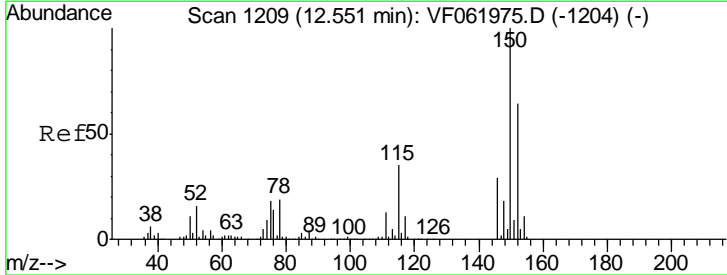
Tgt Ion	Resp	Lower	Upper
106	36724		
106	100		
91	212.5	102.3	306.8

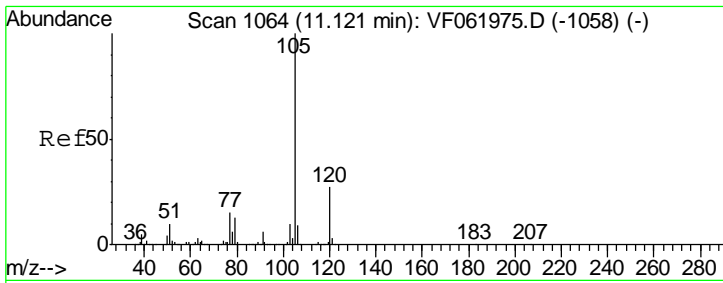
**Manual Integrations**  
**APPROVED**  
 MMDadoda  
 3/23/2019 2:59:27 AM



#72  
 1,4-Dichlorobenzene-d4  
 Concen: 50.000 ug/l  
 RT: 12.56 min Scan# 1210  
 Delta R.T. 0.01 min  
 Lab File: VF062068.D  
 Acq: 21 Mar 2019 18:50

Tgt Ion	Resp	Lower	Upper
152	96159		
152	100		
115	50.1	27.3	81.9
150	153.8	0.0	316.2



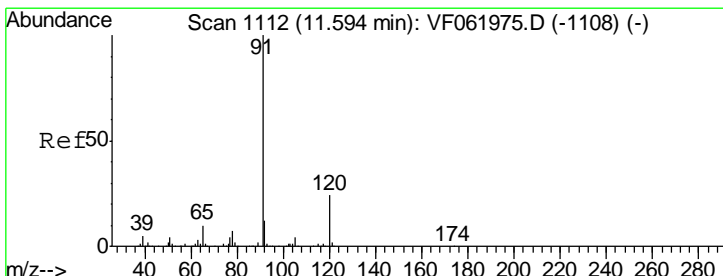
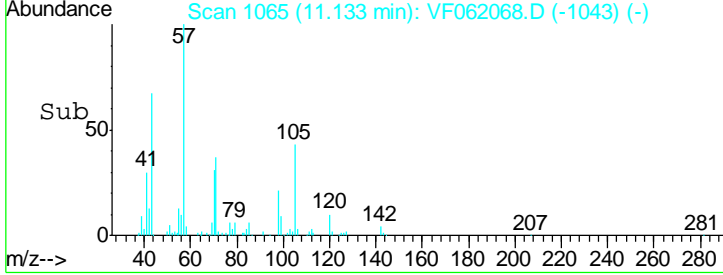
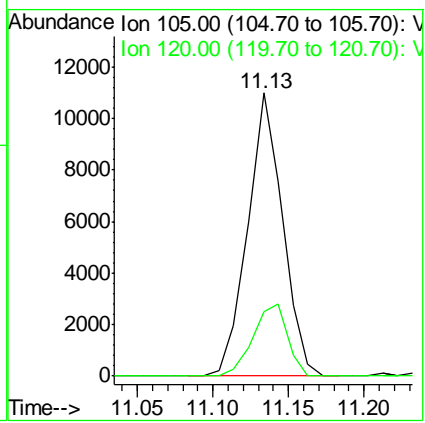
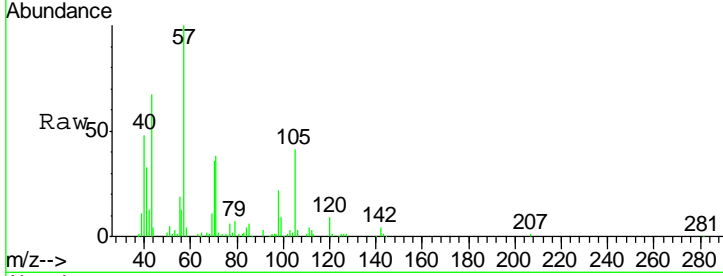


#73  
 Isopropylbenzene  
 Concen: 2.667 ug/l  
 RT: 11.13 min Scan# 1065  
 Delta R.T. 0.01 min  
 Lab File: VF062068.D  
 Acq: 21 Mar 2019 18:50

Instrument : MSVOA\_F  
 Client Sampled : EO-02-032019-A

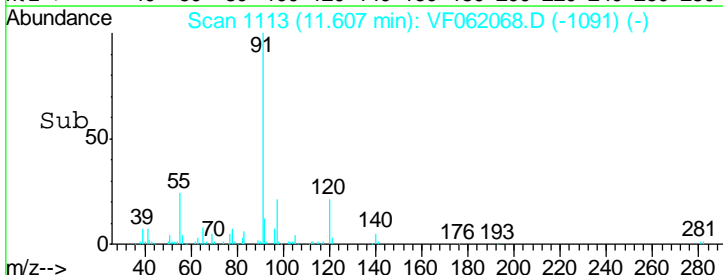
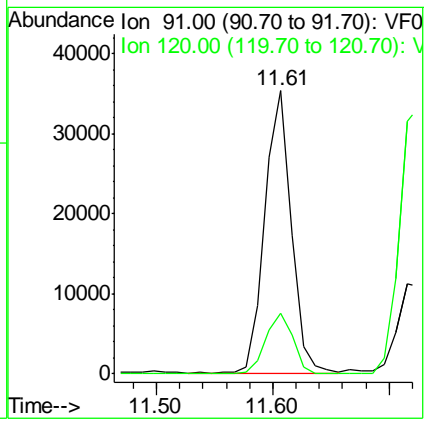
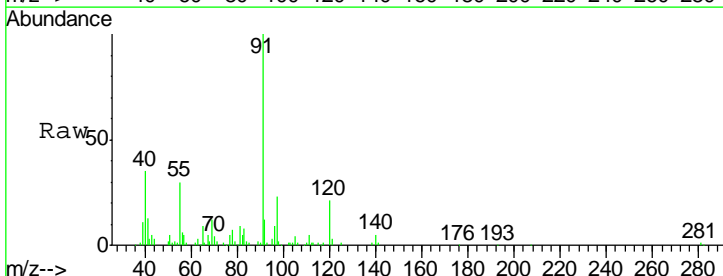
Tgt Ion	Resp	Lower	Upper
105	17717		
105	100		
120	22.9	13.8	41.3

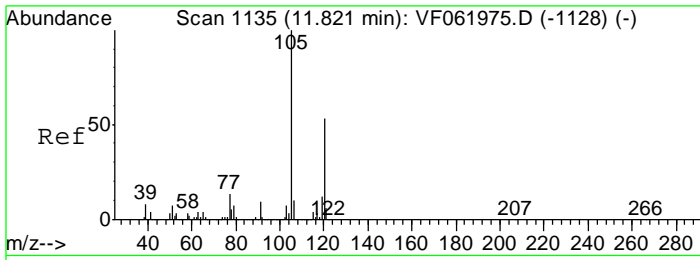
Manual Integrations  
**APPROVED**  
 MMDadoda  
 3/23/2019 2:59:27 AM



#78  
 n-propylbenzene  
 Concen: 7.255 ug/l  
 RT: 11.61 min Scan# 1113  
 Delta R.T. 0.01 min  
 Lab File: VF062068.D  
 Acq: 21 Mar 2019 18:50

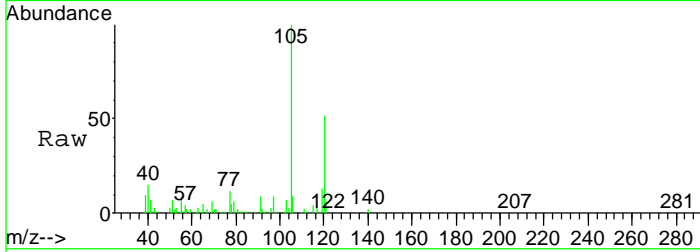
Tgt Ion	Resp	Lower	Upper
91	55420		
91	100		
120	21.4	11.8	35.3





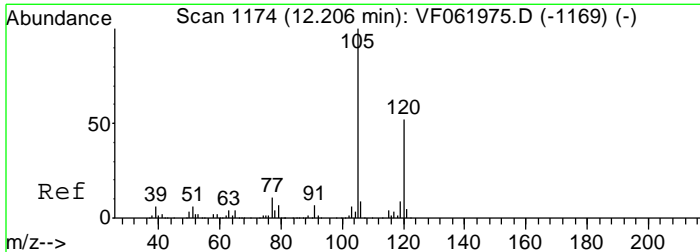
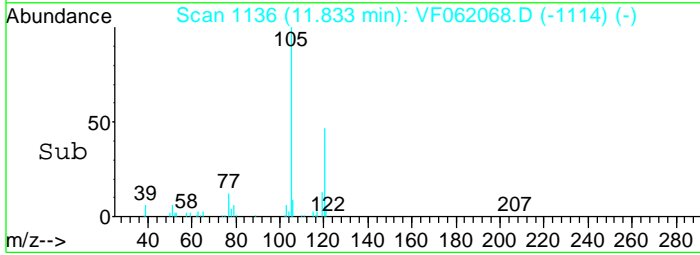
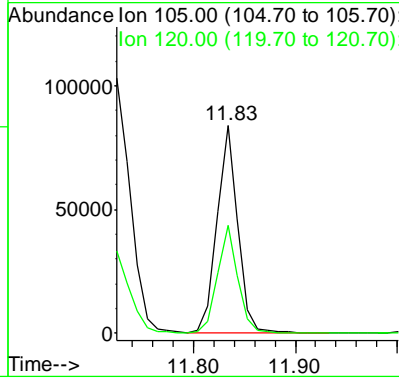
#80  
 1,3,5-Trimethylbenzene  
 Concen: 22.516 ug/l  
 RT: 11.83 min Scan# 1136  
 Delta R.T. 0.01 min  
 Lab File: VF062068.D  
 Acq: 21 Mar 2019 18:50

Instrument : MSVOA\_F  
 ClientSampled : EO-02-032019-A

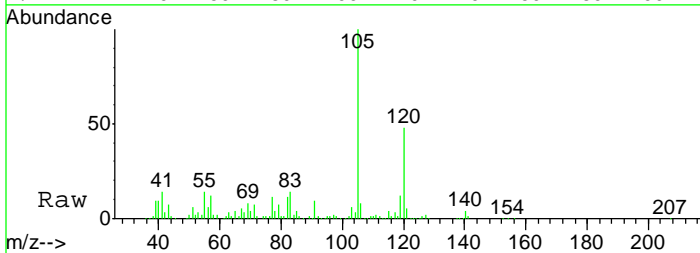


Tgt Ion:105 Resp: 120828  
 Ion Ratio Lower Upper  
 105 100  
 120 52.2 26.6 79.7

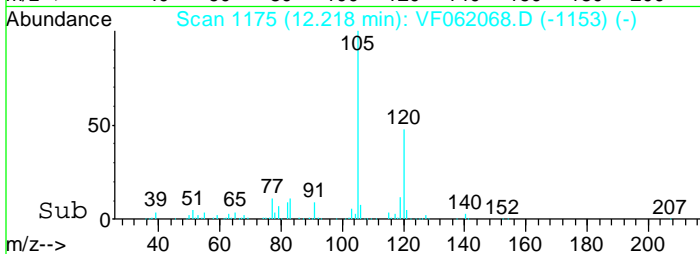
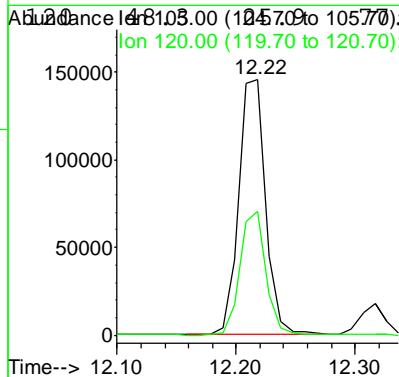
Manual Integrations APPROVED  
 MMDadoda  
 3/23/2019 2:59:27 AM

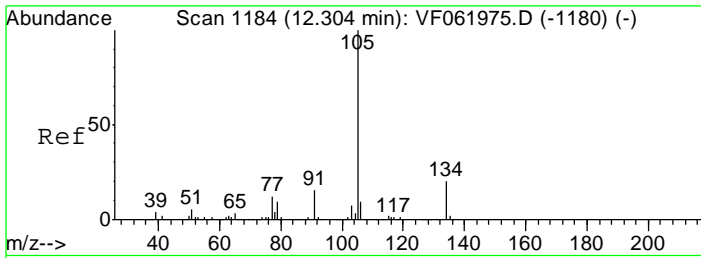


#84  
 1,2,4-Trimethylbenzene  
 Concen: 43.286 ug/l  
 RT: 12.22 min Scan# 1175  
 Delta R.T. 0.01 min  
 Lab File: VF062068.D  
 Acq: 21 Mar 2019 18:50



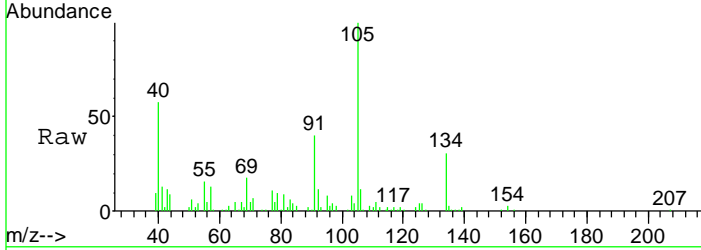
Tgt Ion:105 Resp: 232667  
 Ion Ratio Lower Upper  
 105 100





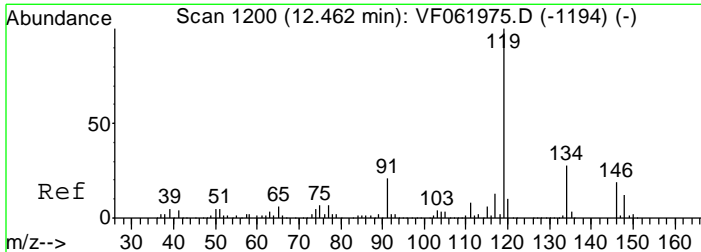
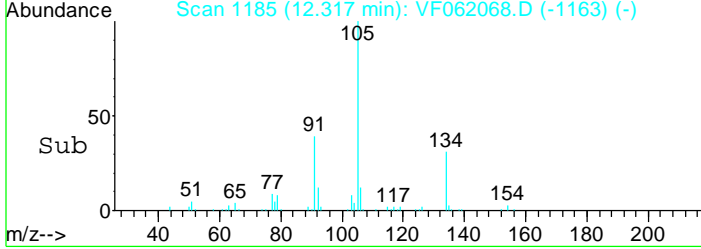
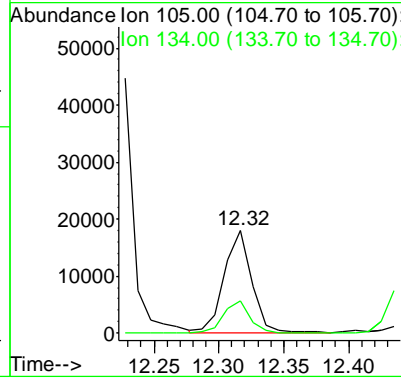
#85  
 sec-Butylbenzene  
 Concen: 3.436 ug/l  
 RT: 12.32 min Scan# 1185  
 Delta R.T. 0.01 min  
 Lab File: VF062068.D  
 Acq: 21 Mar 2019 18:50

**Instrument :**  
 MSVOA\_F  
**ClientSampled :**  
 EO-02-032019-A

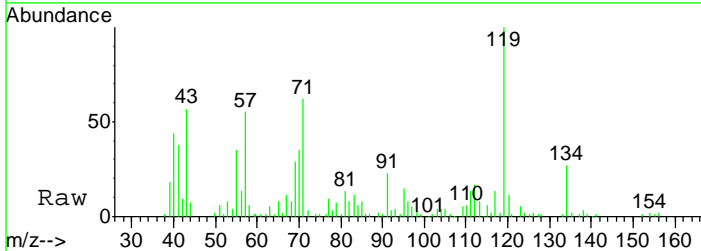


Tgt Ion:105 Resp: 26057  
 Ion Ratio Lower Upper  
 105 100  
 134 31.0 10.0 29.8#

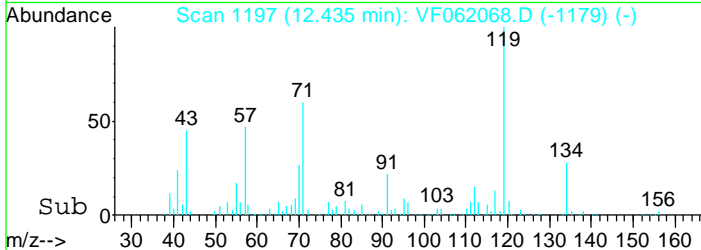
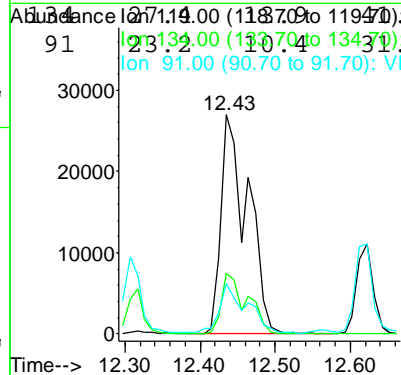
**Manual Integrations**  
**APPROVED**  
 MMDadoda  
 3/23/2019 2:59:27 AM

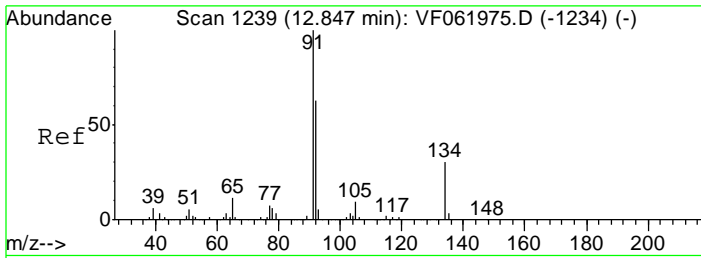


#86  
 p-Isopropyltoluene  
 Concen: 10.499 ug/l  
 RT: 12.43 min Scan# 1197  
 Delta R.T. -0.03 min  
 Lab File: VF062068.D  
 Acq: 21 Mar 2019 18:50



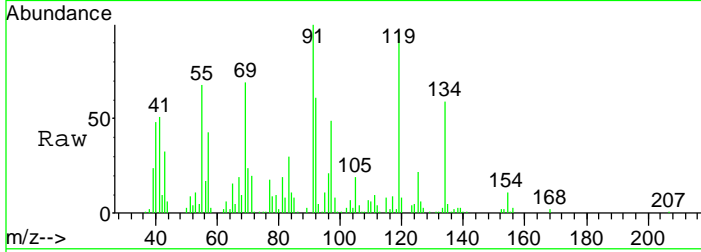
Tgt Ion:119 Resp: 66428  
 Ion Ratio Lower Upper  
 119 100





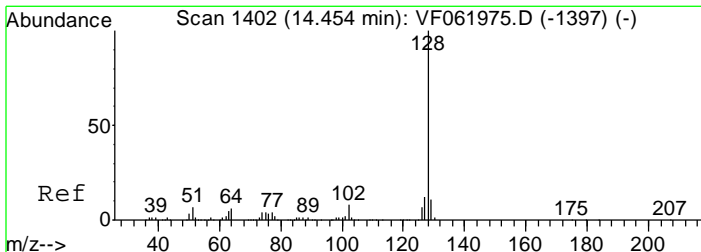
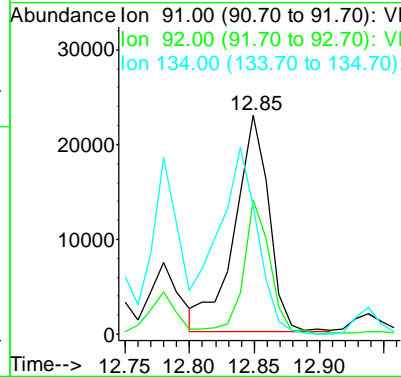
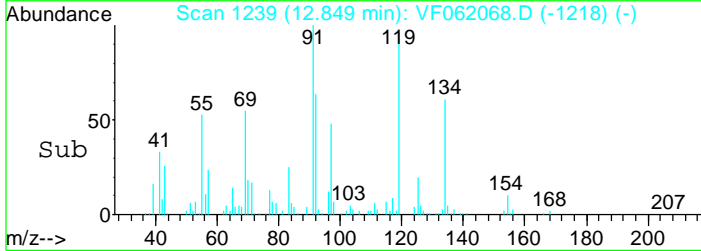
#89  
 n-Butylbenzene  
 Concen: 7.022 ug/l  
 RT: 12.85 min Scan# 1239  
 Delta R.T. 0.00 min  
 Lab File: VF062068.D  
 Acq: 21 Mar 2019 18:50

**Instrument :**  
 MSVOA\_F  
**ClientSampled :**  
 EO-02-032019-A

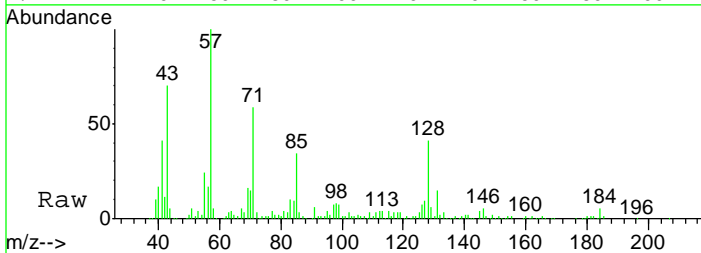


Tgt Ion: 91 Resp: 41746  
 Ion Ratio Lower Upper  
 91 100  
 92 61.1 31.7 95.1  
 134 58.6 15.1 45.3#

**Manual Integrations**  
**APPROVED**  
 MMDadoda  
 3/23/2019 2:59:27 AM



#95  
 Naphthalene  
 Concen: 12.338 ug/l  
 RT: 14.47 min Scan# 1403  
 Delta R.T. 0.01 min  
 Lab File: VF062068.D  
 Acq: 21 Mar 2019 18:50



Tgt Ion: 128 Resp: 43274  
 Ion Ratio Lower Upper  
 128 100

