

Data Path : Z:\VOASRV\HPCHEM1\MSVOA F\DATA\VF041919\  
 Data File : VF062233.D  
 Acq On : 19 Apr 2019 19:07  
 Operator : FY/SY  
 Sample : K2475-01  
 Misc : 5.76µ/5mL/MSVOA F/SOIL  
 ALS Vial : 17 Sample Multiplier: 1

Instrument :  
 MSVOA\_F  
 ClientSampleId :  
 TP-TRACK-8-9

Integration Parameters: RTEINT.P

Integrator: RTE  
 Smoothing : ON  
 Sampling : 1  
 Start Thrs: 0.2  
 Stop Thrs : 0

Filtering: 5  
 Min Area: 3 % of largest Peak  
 Max Peaks: 100  
 Peak Location: TOP

If leading or trailing edge < 100 prefer < Baseline drop else tangent >  
 Peak separation: 5

Method : Z:\VOASRV\HPCHEM1\MSVOA\_X\METHOD\82F041719S.M  
 Title : SW846 8260

Signal : TIC

peak #	R.T. min	first scan	max scan	last scan	PK TY	peak height	corr. area	corr. % max.	% of total
1	1.196	57	67	68	rBV7	25123	111326	7.95%	1.414%
2	1.245	70	72	74	rVV2	6133	15368	1.10%	0.195%
3	1.718	118	120	122	rBV2	12678	14442	1.03%	0.183%
4	2.112	156	160	162	rBV3	40329	97633	6.97%	1.240%
5	2.290	175	178	180	rBV2	27332	55857	3.99%	0.710%
6	2.349	180	184	190	rVB3	57225	178859	12.77%	2.272%
7	2.792	228	229	233	rBV4	9833	17753	1.27%	0.226%
8	3.108	260	261	263	rBV2	12829	16322	1.17%	0.207%
9	3.147	263	265	272	rVB	38839	64532	4.61%	0.820%
10	4.232	367	375	378	rVV2	45961	164177	11.72%	2.086%
11	4.310	378	383	393	rVV	225235	722030	51.54%	9.174%
12	5.050	451	458	468	rVV2	424065	1400777	100.00%	17.797%
13	5.779	526	532	542	rVB	409630	1071883	76.52%	13.618%
14	7.721	723	729	734	rBV	462516	1126781	80.44%	14.316%
15	8.342	789	792	796	rVV4	6125	20270	1.45%	0.258%
16	8.391	796	797	804	rVV7	4811	18780	1.34%	0.239%
17	9.919	946	952	961	rBV	398777	914814	65.31%	11.623%
18	10.373	996	998	1000	rBV	16913	19411	1.39%	0.247%
19	11.506	1108	1113	1119	rVV	425517	777564	55.51%	9.879%
20	11.634	1122	1126	1129	rVV	24774	58224	4.16%	0.740%
21	12.620	1222	1226	1235	rVB	506214	852315	60.85%	10.829%
22	12.995	1260	1264	1268	rVB5	8439	16376	1.17%	0.208%
23	13.330	1294	1298	1302	rVB	26107	45081	3.22%	0.573%
24	13.754	1338	1341	1343	rVV3	13592	20132	1.44%	0.256%
25	14.316	1396	1398	1400	rBV	36570	25993	1.86%	0.330%
26	14.493	1414	1416	1421	rBV6	8251	15052	1.07%	0.191%
27	14.651	1429	1432	1434	rBV2	15155	29051	2.07%	0.369%

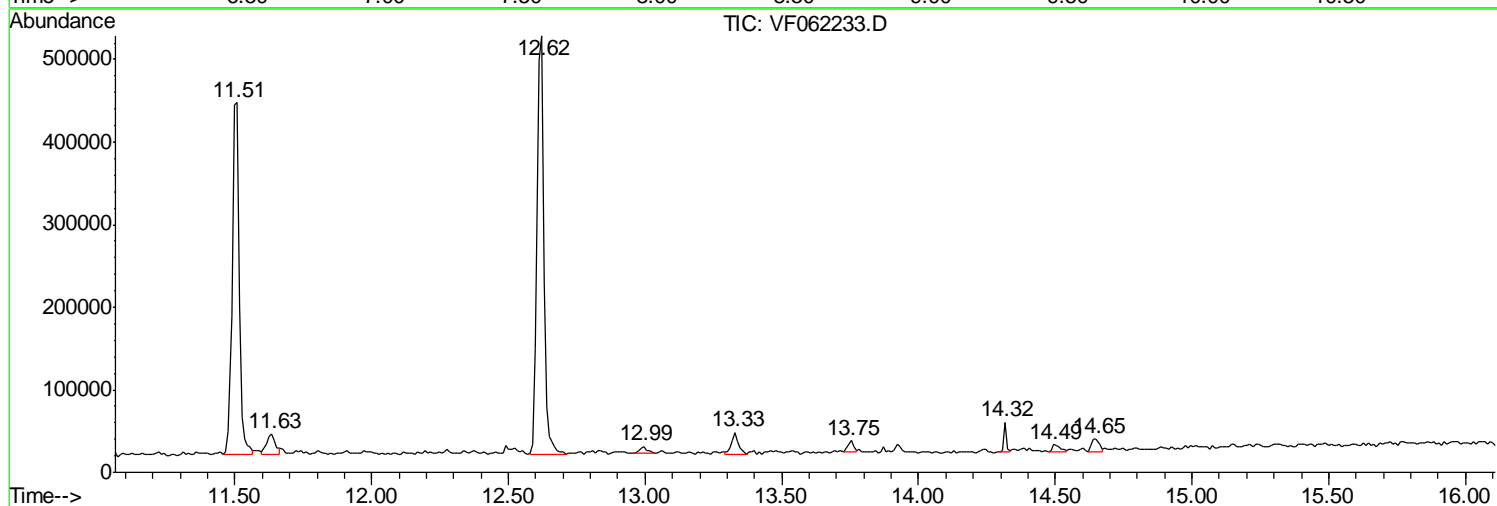
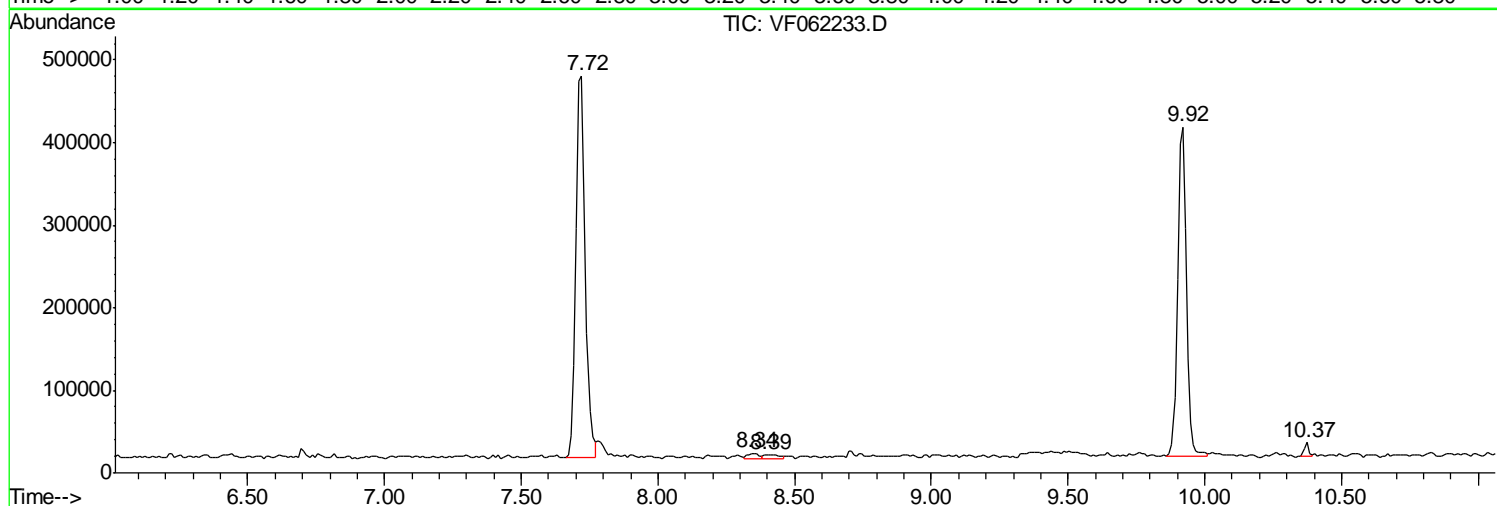
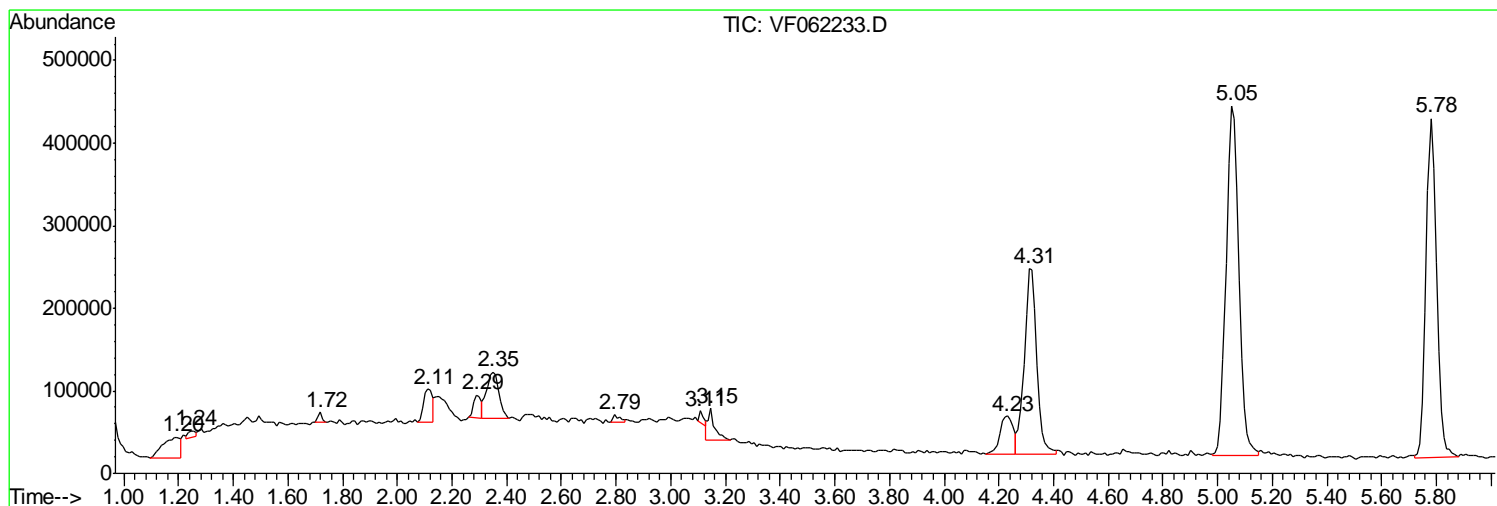
Sum of corrected areas: 7870803

Data Path : Z:\VOASRV\HPCHEM1\MSVOA F\DATA\VF041919\  
 Data File : VF062233.D  
 Acq On : 19 Apr 2019 19:07  
 Operator : FY/SY  
 Sample : K2475-01  
 Misc : 5.76µ/5mL/MSVOA F/SOIL  
 ALS Vial : 17 Sample Multiplier: 1

Instrument :  
 MSVOA\_F  
 ClientSampleId :  
 TP-TRACK-8-9

Quant Method : Z:\VOASRV\HPCHEM1\MSVOA\_X\METHOD\82F041719S.M  
 Quant Title : SW846 8260

TIC Library : C:\DATABASE\NIST11.L  
 TIC Integration Parameters: LSCINT.P



Data Path : Z:\VOASRV\HPCHEM1\MSVOA\_F\DATA\VF041919\  
Data File : VF062233.D  
Acq On : 19 Apr 2019 19:07  
Operator : FY/SY  
Sample : K2475-01  
Misc : 5.76g/5mL/MSVOA\_F/SOIL  
ALS Vial : 17 Sample Multiplier: 1

Instrument :  
MSVOA\_F  
ClientSampleId :  
TP-TRACK-8-9

Quant Method : Z:\VOASRV\HPCHEM1\MSVOA\_X\METHOD\82F041719S.M  
Quant Title : SW846 8260

TIC Library : C:\DATABASE\NIST11.L  
TIC Integration Parameters: LSCINT.P

No Library Search Compounds Detected

\*\*\*\*\*

Data Path : Z:\VOASRV\HPCHEM1\MSVOA\_F\DATA\VF041919\  
Data File : VF062233.D  
Acq On : 19 Apr 2019 19:07  
Operator : FY/SY  
Sample : K2475-01  
Misc : 5.76g/5mL/MSVOA\_F/SOIL  
ALS Vial : 17 Sample Multiplier: 1

Instrument :  
MSVOA\_F  
ClientSampleId :  
TP-TRACK-8-9

Quant Method : Z:\VOASRV\HPCHEM1\MSVOA\_X\METHOD\82F041719S.M  
Quant Title : SW846 8260

TIC Library : C:\DATABASE\NIST11.L  
TIC Integration Parameters: LSCINT.P

TIC Top Hit name	RT	EstConc	Units	Response	--Internal Standard--			
					#	RT	Resp	Conc

---