

Data Path : Z:\VOASRV\HPCHEM1\MSVOA F\DATA\VF050819\  
 Data File : VF062376.D  
 Acq On : 8 May 2019 14:44  
 Operator : FY/SY  
 Sample : K2673-03RE  
 Misc : 5.05µ/5mL/MSVOA F/SOIL  
 ALS Vial : 8 Sample Multiplier: 1

Instrument :  
 MSVOA\_F  
 ClientSampleId :  
 SB-12-2.0-2.5RE

Quant Time: May 09 05:18:24 2019  
 Quant Method : Z:\VOASRV\HPCHEM1\MSVOA\_X\METHOD\82F050619S.M  
 Quant Title : SW846 8260  
 QLast Update : Tue May 07 04:34:57 2019  
 Response via : Initial Calibration

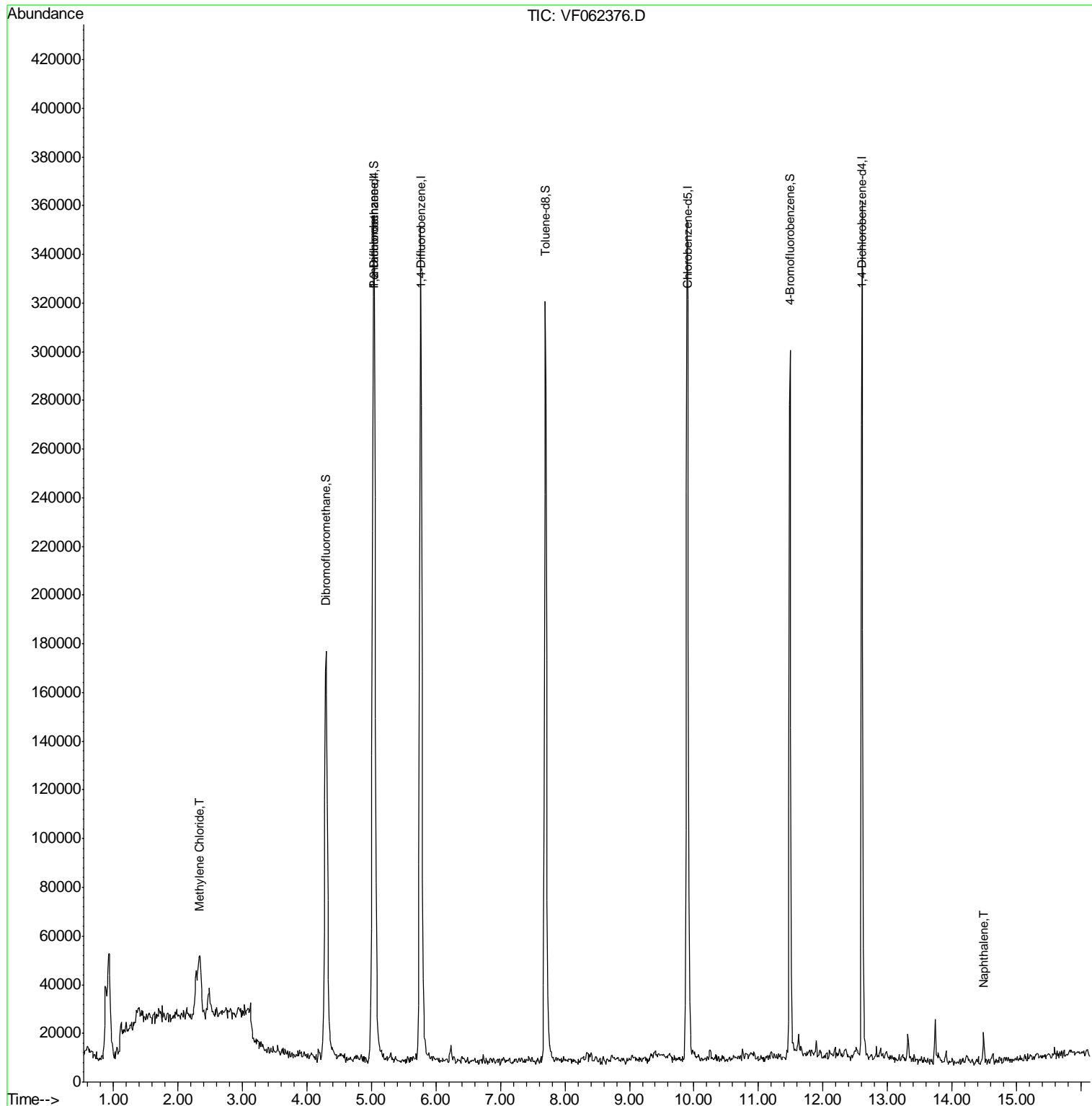
Internal Standards	R.T.	QIon	Response	Conc	Units	Dev(Min)
1) Pentafluorobenzene	5.04	168	276376	50.00	µg/l	0.00
34) 1,4-Difluorobenzene	5.76	114	380449	50.00	µg/l	0.00
63) Chlorobenzene-d5	9.89	117	253836	50.00	µg/l	0.00
72) 1,4-Dichlorobenzene-d4	12.61	152	92586	50.00	µg/l	0.00
System Monitoring Compounds						
33) 1,2-Dichloroethane-d4	5.02	65	143053	54.77	µg/l	0.00
Spiked Amount	50.000		Recovery	=	109.54%	
35) Dibromofluoromethane	4.30	113	158598	52.33	µg/l	0.00
Spiked Amount	50.000		Recovery	=	104.66%	
50) Toluene-d8	7.70	98	264941	36.11	µg/l	0.00
Spiked Amount	50.000		Recovery	=	72.22%	
62) 4-Bromofluorobenzene	11.48	95	98834	29.86	µg/l	0.00
Spiked Amount	50.000		Recovery	=	59.72%	
Target Compounds						
20) Methylene Chloride	2.32	84	22062	11.541	µg/l #	91
95) Naphthalene	14.49	128	4194	1.221	µg/l #	94

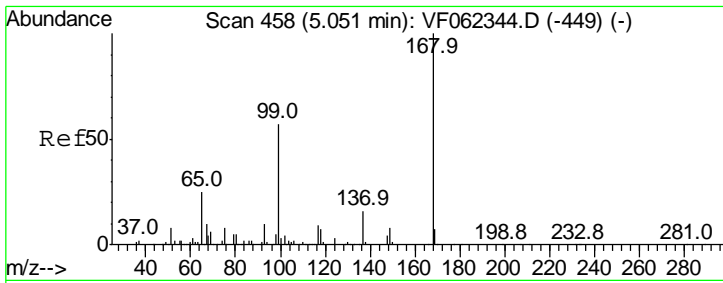
(#) = qualifier out of range (m) = manual integration (+) = signals summed

Data Path : Z:\VOASRV\HPCHEM1\MSVOA F\DATA\VF050819\  
 Data File : VF062376.D  
 Acq On : 8 May 2019 14:44  
 Operator : FY/SY  
 Sample : K2673-03RE  
 Misc : 5.05µ/5mL/MSVOA F/SOIL  
 ALS Vial : 8 Sample Multiplier: 1

Instrument :  
 MSVOA\_F  
 ClientSampled :  
 SB-12-2.0-2.5RE

Quant Time: May 09 05:18:24 2019  
 Quant Method : Z:\VOASRV\HPCHEM1\MSVOA\_X\METHOD\82F050619S.M  
 Quant Title : SW846 8260  
 QLast Update : Tue May 07 04:34:57 2019  
 Response via : Initial Calibration

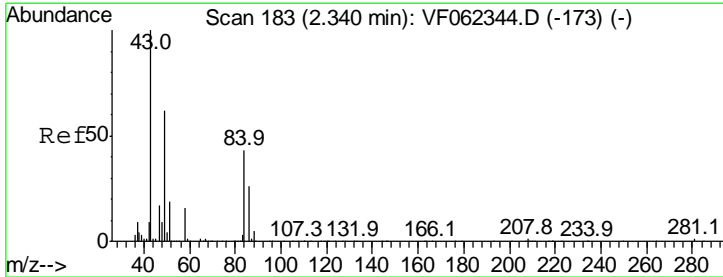
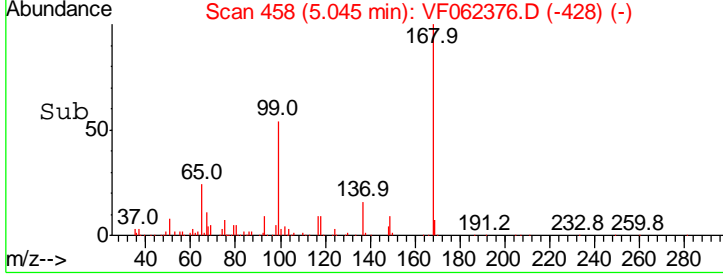
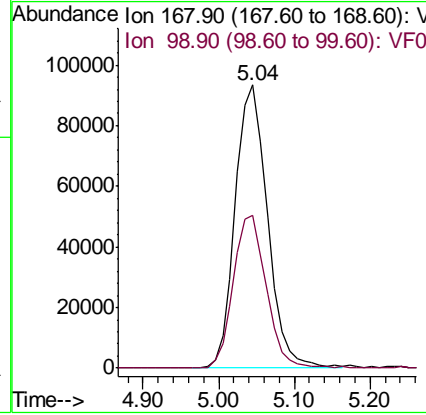
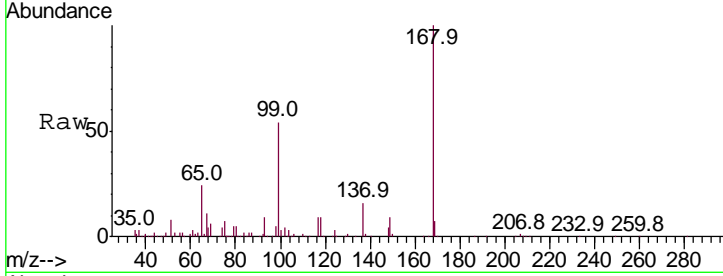




#1  
 Pentafluorobenzene  
 Concen: 50.000 ug/l  
 RT: 5.04 min Scan# 458  
 Delta R.T. -0.01 min  
 Lab File: VF062376.D  
 Acq: 8 May 2019 14:44

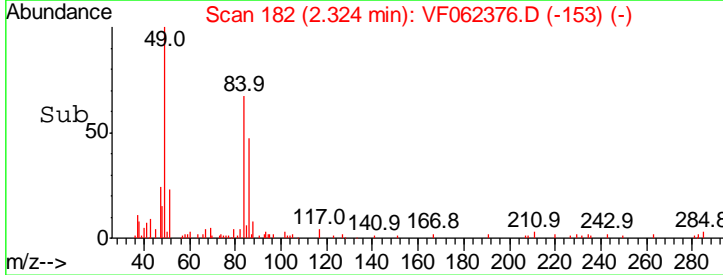
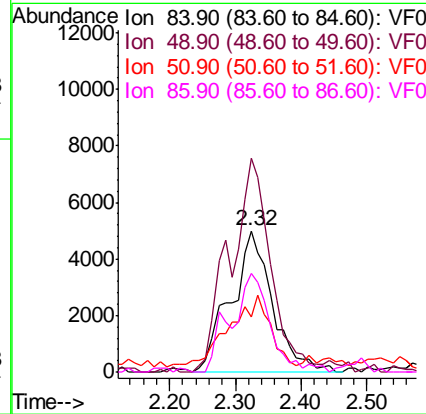
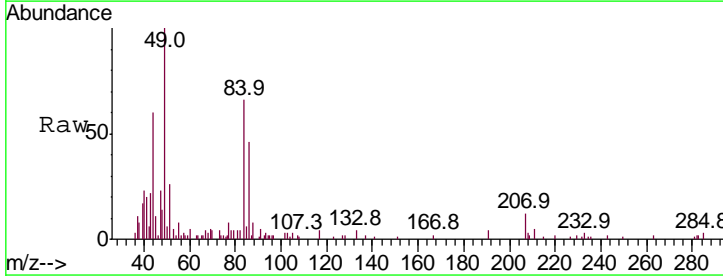
Instrument :  
 MSVOA\_F  
 ClientSampled :  
 SB-12-2.0-2.5RE

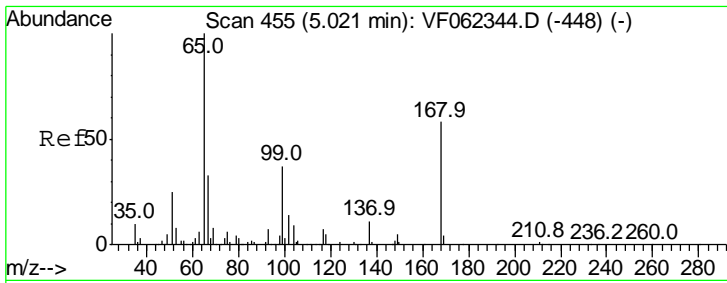
Tgt Ion	Ratio	Lower	Upper
168	100		
99	54.2	45.9	68.9



#20  
 Methylene Chloride  
 Concen: 11.541 ug/l  
 RT: 2.32 min Scan# 182  
 Delta R.T. -0.02 min  
 Lab File: VF062376.D  
 Acq: 8 May 2019 14:44

Tgt Ion	Ratio	Lower	Upper
84	100		
49	151.3	117.5	176.3
51	31.1	37.0	55.4#
86	69.6	49.3	73.9

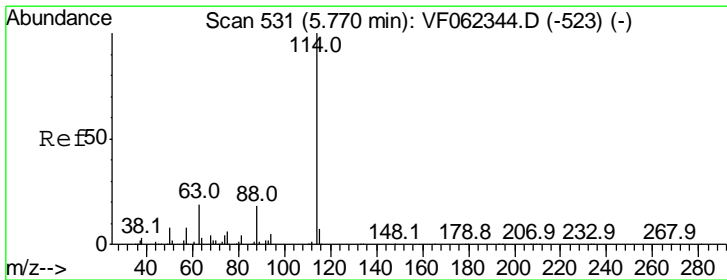
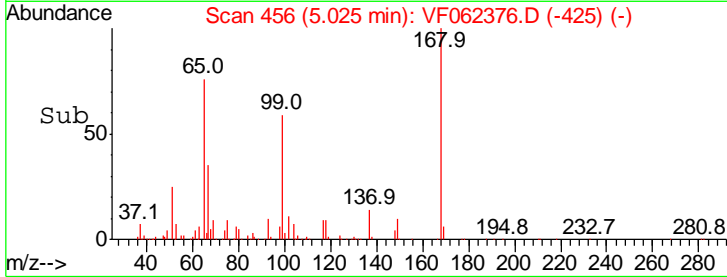
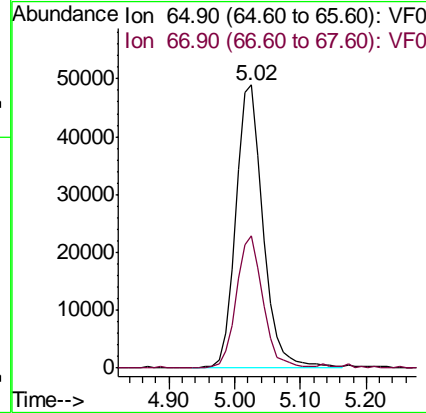
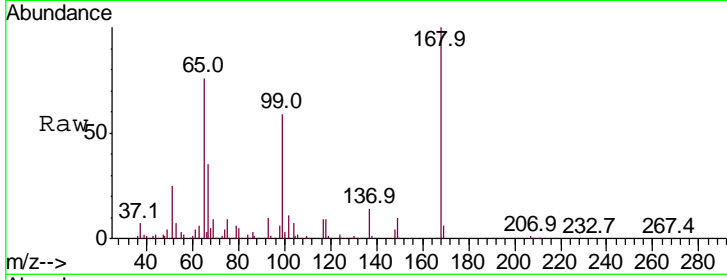




#33  
 1,2-Dichloroethane-d4  
 Concen: 54.770 ug/l  
 RT: 5.02 min Scan# 456  
 Delta R.T. 0.00 min  
 Lab File: VF062376.D  
 Acq: 8 May 2019 14:44

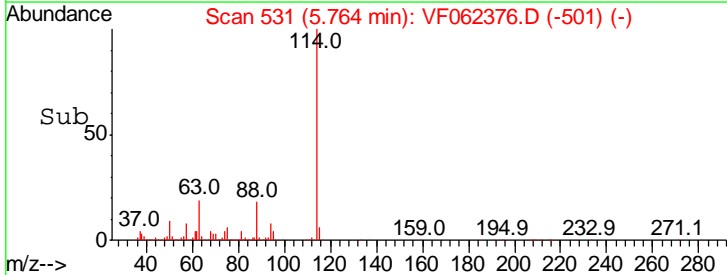
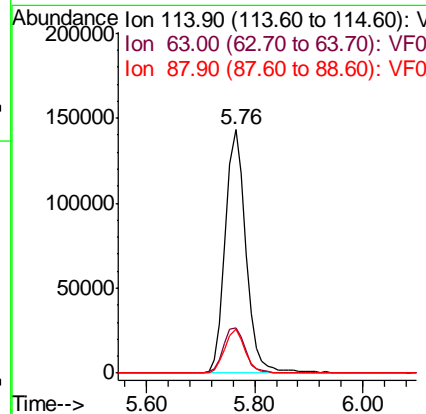
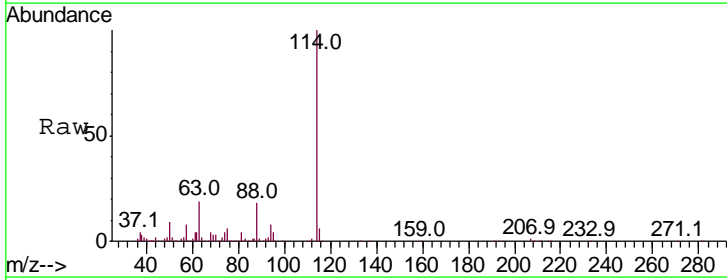
Instrument :  
 MSVOA\_F  
 ClientSampled :  
 SB-12-2.0-2.5RE

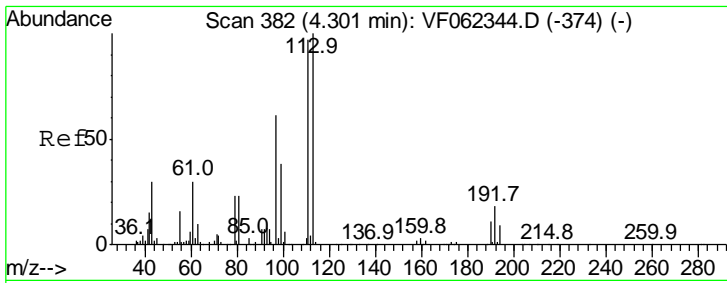
Tgt Ion: 65 Resp: 143053  
 Ion Ratio Lower Upper  
 65 100  
 67 45.5 0.0 85.8



#34  
 1,4-Difluorobenzene  
 Concen: 50.000 ug/l  
 RT: 5.76 min Scan# 531  
 Delta R.T. -0.01 min  
 Lab File: VF062376.D  
 Acq: 8 May 2019 14:44

Tgt Ion: 114 Resp: 380449  
 Ion Ratio Lower Upper  
 114 100  
 63 18.7 0.0 37.4  
 88 18.2 0.0 36.4

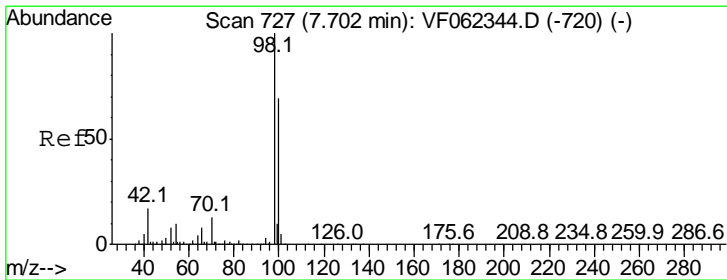
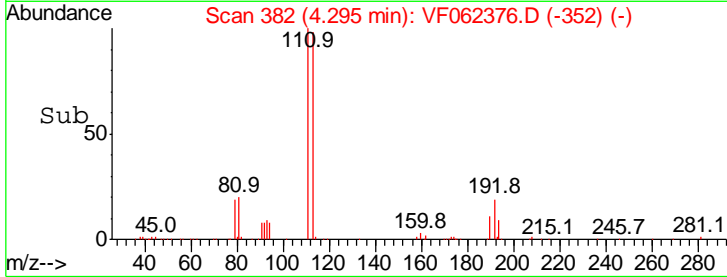
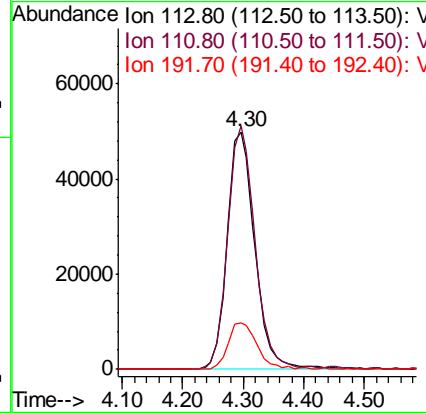
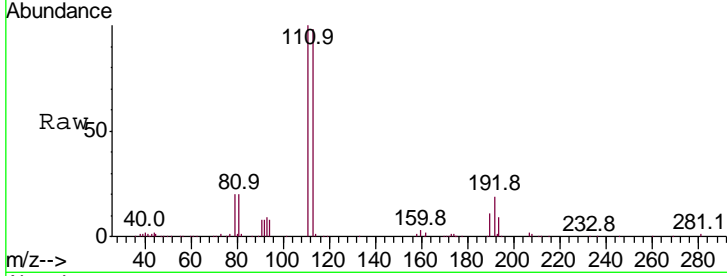




#35  
 Dibromofluoromethane  
 Concen: 52.326 ug/l  
 RT: 4.30 min Scan# 382  
 Delta R.T. -0.01 min  
 Lab File: VF062376.D  
 Acq: 8 May 2019 14:44

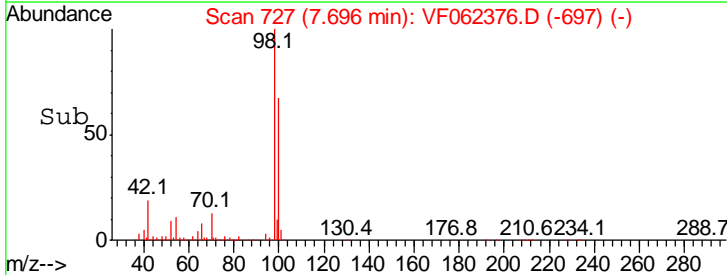
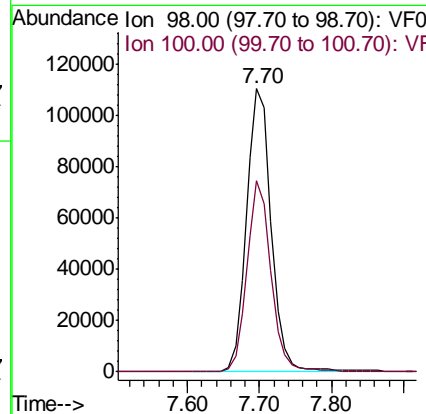
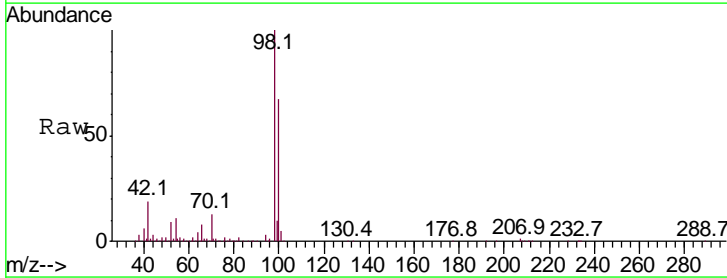
Instrument : MSVOA\_F  
 ClientSampled : SB-12-2.0-2.5RE

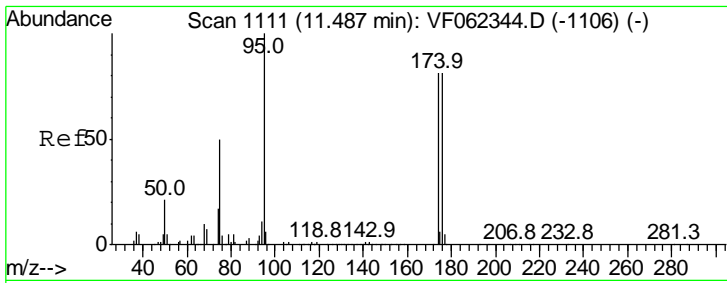
Tgt Ion	Resp	Lower	Upper
113	158598		
111	101.1	79.4	119.0
192	20.6	16.0	24.0



#50  
 Toluene-d8  
 Concen: 36.111 ug/l  
 RT: 7.70 min Scan# 727  
 Delta R.T. -0.01 min  
 Lab File: VF062376.D  
 Acq: 8 May 2019 14:44

Tgt Ion	Resp	Lower	Upper
98	264941		
100	65.9	53.3	79.9

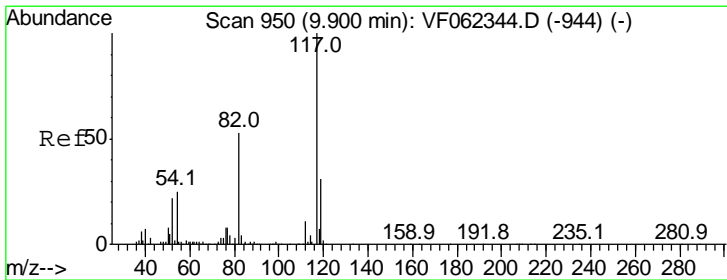
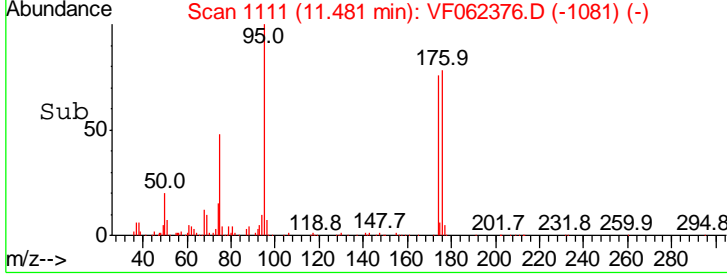
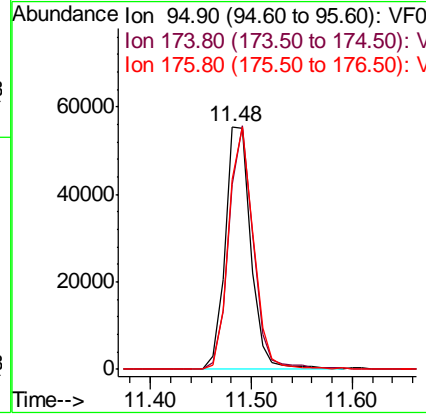
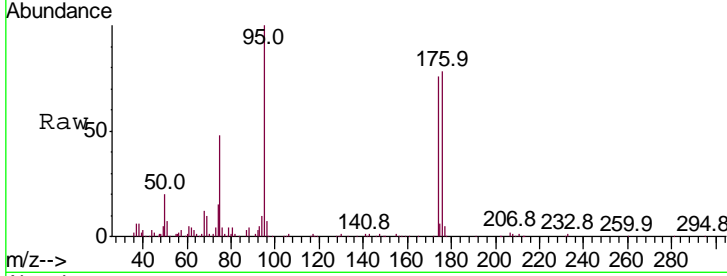




#62  
 4-Bromofluorobenzene  
 Concen: 29.858 ug/l  
 RT: 11.48 min Scan# 1111  
 Delta R.T. -0.01 min  
 Lab File: VF062376.D  
 Acq: 8 May 2019 14:44

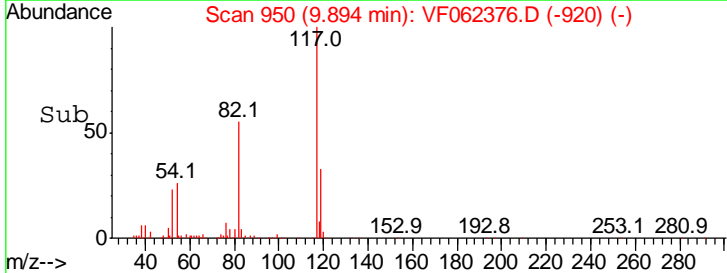
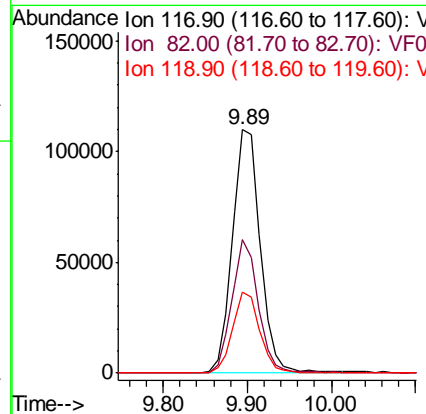
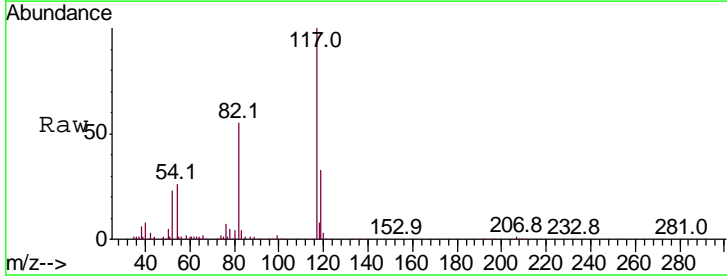
Instrument : MSVOA\_F  
 ClientSampled : SB-12-2.0-2.5RE

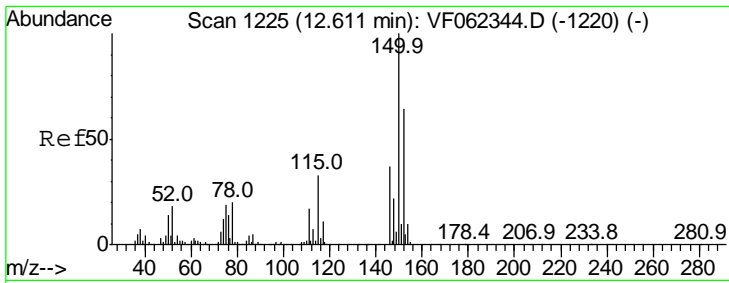
Tgt Ion	Resp	Lower	Upper
95	100		
174	94.2	0.0	191.8
176	96.0	0.0	193.2



#63  
 Chlorobenzene-d5  
 Concen: 50.000 ug/l  
 RT: 9.89 min Scan# 950  
 Delta R.T. -0.01 min  
 Lab File: VF062376.D  
 Acq: 8 May 2019 14:44

Tgt Ion	Resp	Lower	Upper
117	100		
82	54.7	42.2	63.2
119	33.2	25.0	37.4

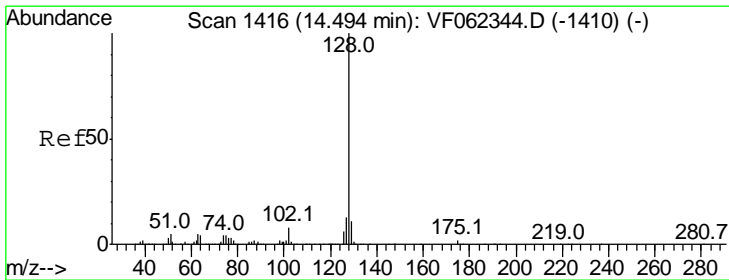
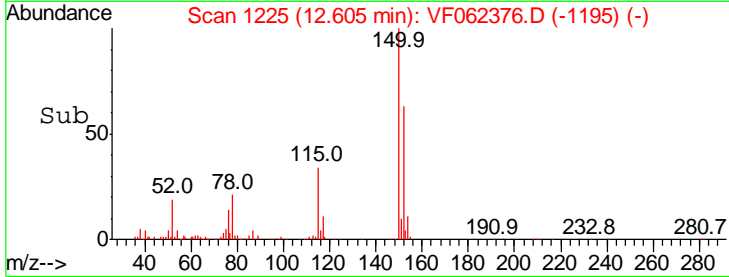
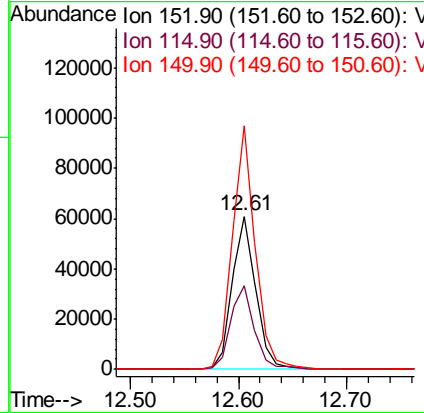
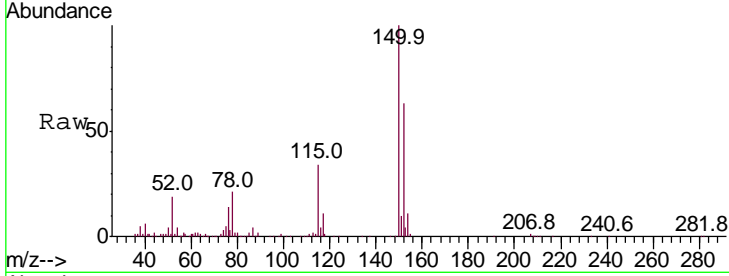




#72  
 1,4-Dichlorobenzene-d4  
 Concen: 50.000 ug/l  
 RT: 12.61 min Scan# 1225  
 Delta R.T. -0.01 min  
 Lab File: VF062376.D  
 Acq: 8 May 2019 14:44

Instrument :  
 MSVOA\_F  
 ClientSampled :  
 SB-12-2.0-2.5RE

Tgt Ion	Resp	Lower	Upper
152	100		
115	55.3	26.4	79.2
150	154.5	0.0	335.0



#95  
 Naphthalene  
 Concen: 1.221 ug/l  
 RT: 14.49 min Scan# 1416  
 Delta R.T. -0.01 min  
 Lab File: VF062376.D  
 Acq: 8 May 2019 14:44

Tgt Ion	Resp	Lower	Upper
128	100		
127	13.7	10.5	15.7
129	15.0	8.6	12.8#

