

Data Path : Z:\VOASRV\HPCHEM1\MSVOA F\DATA\VF050919\  
 Data File : VF062413.D  
 Acq On : 9 May 2019 23:22  
 Operator : FY/SY  
 Sample : K2750-03  
 Misc : 1.00µ/5mL/MSVOA F/SOIL  
 ALS Vial : 23 Sample Multiplier: 1

Instrument :  
 MSVOA\_F  
 ClientSampleId :  
 72-11995

Integration Parameters: RTEINT.P

Integrator: RTE  
 Smoothing : ON Filtering: 5  
 Sampling : 1 Min Area: 3 % of largest Peak  
 Start Thrs: 0.2 Max Peaks: 100  
 Stop Thrs : 0 Peak Location: TOP

If leading or trailing edge < 100 prefer < Baseline drop else tangent >  
 Peak separation: 5

Method : Z:\VOASRV\HPCHEM1\MSVOA\_X\METHOD\82F050619S.M  
 Title : SW846 8260

Signal : TIC

peak #	R.T. min	first scan	max scan	last scan	PK TY	peak height	corr. area	corr. % max.	% of total
1	1.140	60	62	65	rVV4	6542	14197	1.59%	0.372%
2	1.179	65	66	69	rVV3	7431	12780	1.43%	0.335%
3	1.298	75	78	80	rVV4	6992	15800	1.77%	0.414%
4	1.347	80	83	84	rVV3	7792	13629	1.53%	0.358%
5	1.386	84	87	88	rVV3	7248	14583	1.64%	0.383%
6	1.455	88	94	97	rVV7	6094	27175	3.05%	0.713%
7	2.283	175	178	180	rBV4	6049	10796	1.21%	0.283%
8	4.304	377	383	392	rBV	152653	480555	53.95%	12.606%
9	5.043	449	458	470	rBV2	262397	890808	100.00%	23.368%
10	5.773	524	532	544	rBV	216278	579152	65.01%	15.193%
11	6.611	609	617	619	rBV8	3117	11241	1.26%	0.295%
12	7.705	723	728	738	rVV	195730	475175	53.34%	12.465%
13	8.316	788	790	793	rBV2	16091	24766	2.78%	0.650%
14	9.903	946	951	958	rBV	180333	423194	47.51%	11.101%
15	11.490	1108	1112	1118	rVV	205756	382749	42.97%	10.040%
16	11.628	1122	1126	1133	rVV2	17896	45824	5.14%	1.202%
17	12.614	1222	1226	1231	rVV	204098	346065	38.85%	9.078%
18	13.324	1294	1298	1300	rBV2	12296	17549	1.97%	0.460%
19	14.497	1414	1417	1421	rVB2	8546	13480	1.51%	0.354%
20	14.635	1427	1431	1434	rBV2	6462	12541	1.41%	0.329%

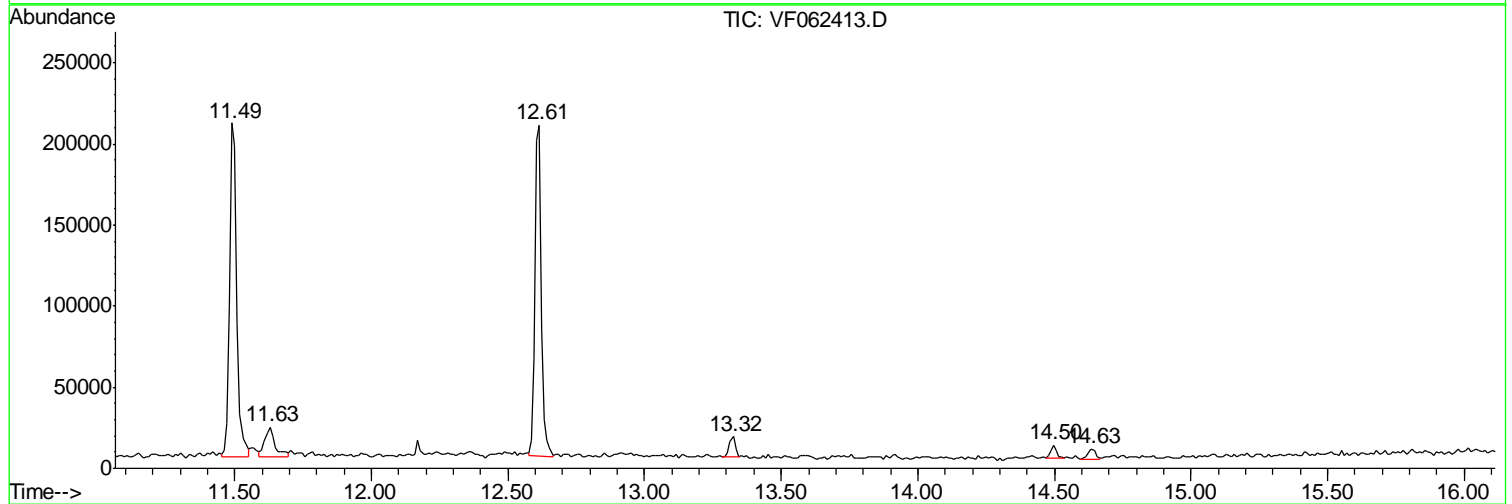
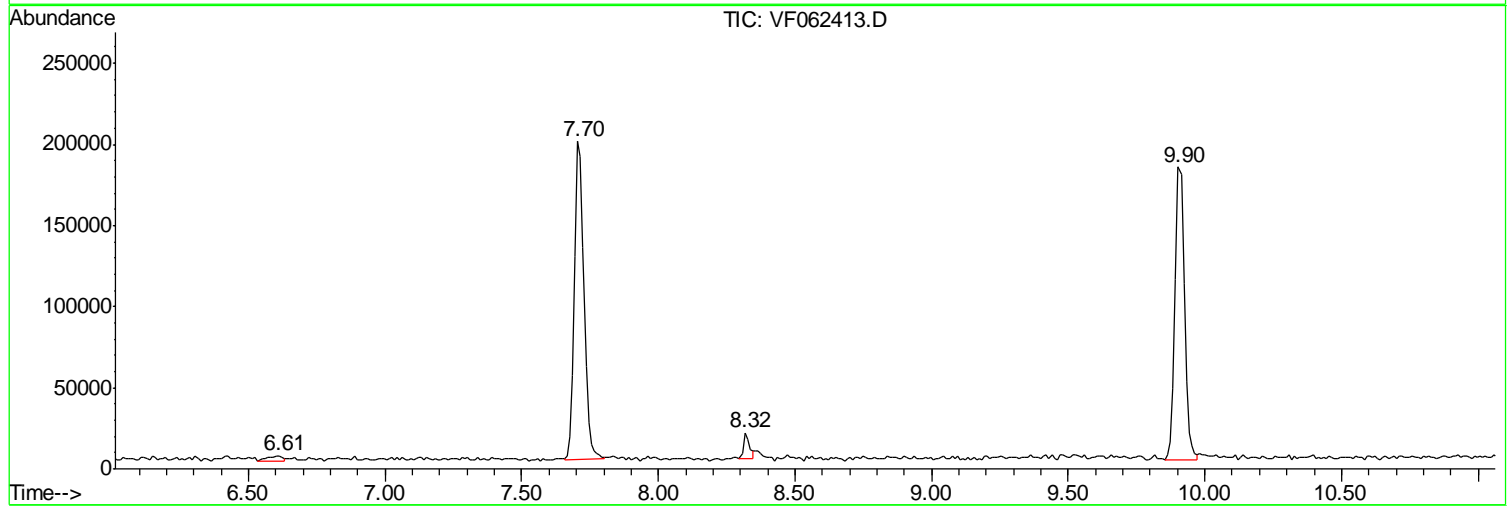
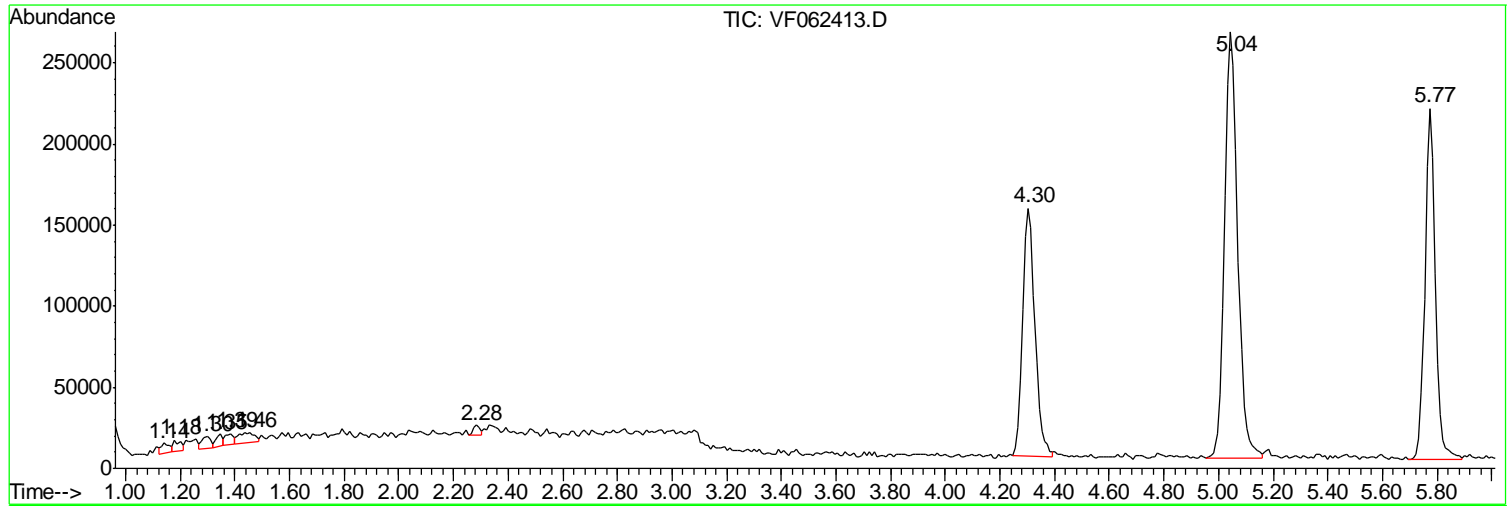
Sum of corrected areas: 3812059

Data Path : Z:\VOASRV\HPCHEM1\MSVOA F\DATA\VF050919\  
 Data File : VF062413.D  
 Acq On : 9 May 2019 23:22  
 Operator : FY/SY  
 Sample : K2750-03  
 Misc : 1.00µ/5mL/MSVOA F/SOIL  
 ALS Vial : 23 Sample Multiplier: 1

Instrument :  
 MSVOA\_F  
 ClientSampleId :  
 72-11995

Quant Method : Z:\VOASRV\HPCHEM1\MSVOA\_X\METHOD\82F050619S.M  
 Quant Title : SW846 8260

TIC Library : C:\DATABASE\NIST11.L  
 TIC Integration Parameters: LSCINT.P



Data Path : Z:\VOASRV\HPCHEM1\MSVOA\_F\DATA\VF050919\  
Data File : VF062413.D  
Acq On : 9 May 2019 23:22  
Operator : FY/SY  
Sample : K2750-03  
Misc : 1.00g/5mL/MSVOA\_F/SOIL  
ALS Vial : 23 Sample Multiplier: 1

**Instrument :**  
MSVOA\_F  
**ClientSampleId :**  
72-11995

Quant Method : Z:\VOASRV\HPCHEM1\MSVOA\_X\METHOD\82F050619S.M  
Quant Title : SW846 8260

TIC Library : C:\DATABASE\NIST11.L  
TIC Integration Parameters: LSCINT.P

No Library Search Compounds Detected

\*\*\*\*\*

Data Path : Z:\VOASRV\HPCHEM1\MSVOA\_F\DATA\VF050919\  
Data File : VF062413.D  
Acq On : 9 May 2019 23:22  
Operator : FY/SY  
Sample : K2750-03  
Misc : 1.00g/5mL/MSVOA\_F/SOIL  
ALS Vial : 23 Sample Multiplier: 1

Instrument :  
MSVOA\_F  
ClientSampleId :  
72-11995

Quant Method : Z:\VOASRV\HPCHEM1\MSVOA\_X\METHOD\82F050619S.M  
Quant Title : SW846 8260

TIC Library : C:\DATABASE\NIST11.L  
TIC Integration Parameters: LSCINT.P

TIC Top Hit name	RT	EstConc	Units	Response	--Internal Standard--			
					#	RT	Resp	Conc

---