

Data Path : Z:\VOASRV\HPCHEM1\MSVOA F\DATA\VF051219\
 Data File : VF062499.D
 Acq On : 12 May 2019 13:25
 Operator : FY/SY
 Sample : K2734-01
 Misc : 6.71g/5mL/MSVOA F/SOIL
 ALS Vial : 7 Sample Multiplier: 1

Instrument :
 MSVOA_F
 ClientSampleId :
 P021-SS004-1218-01

Integration Parameters: RTEINT.P

Integrator: RTE
 Smoothing : ON
 Sampling : 1
 Start Thrs: 0.2
 Stop Thrs : 0

Filtering: 5
 Min Area: 3 % of largest Peak
 Max Peaks: 100
 Peak Location: TOP

If leading or trailing edge < 100 prefer < Baseline drop else tangent >
 Peak separation: 5

Method : Z:\VOASRV\HPCHEM1\MSVOA_X\METHOD\82F050619S.M
 Title : SW846 8260

Signal : TIC

peak #	R.T. min	first scan	max scan	last scan	PK TY	peak height	corr. area	corr. % max.	% of total
1	1.160	57	64	67	rBV7	8436	31703	5.75%	1.098%
2	1.199	67	68	69	rVV	6918	6387	1.16%	0.221%
3	1.229	69	71	72	rVV2	5289	7670	1.39%	0.266%
4	1.298	75	78	79	rVV3	5397	9204	1.67%	0.319%
5	1.327	79	81	82	rVV2	4651	7299	1.32%	0.253%
6	1.347	82	83	84	rVV	7636	7381	1.34%	0.256%
7	1.387	84	87	88	rVV3	8412	16828	3.05%	0.583%
8	1.446	92	93	100	rVB2	8749	26340	4.78%	0.912%
9	1.948	142	144	145	rBV2	4962	8212	1.49%	0.284%
10	1.998	146	149	152	rVB2	12449	22357	4.06%	0.774%
11	2.313	176	181	182	rBV3	11108	31015	5.63%	1.074%
12	2.353	182	185	192	rVB5	17008	50883	9.23%	1.762%
13	2.481	197	198	200	rBV2	3909	6773	1.23%	0.234%
14	3.230	272	274	277	rVB3	3298	5907	1.07%	0.205%
15	4.334	378	386	399	rVB	119470	396197	71.87%	13.717%
16	4.482	399	401	403	rBV3	3640	6182	1.12%	0.214%
17	5.063	453	460	471	rBV2	162835	551237	100.00%	19.085%
18	5.507	502	505	507	rBV3	3079	7592	1.38%	0.263%
19	5.793	528	534	541	rBV	160681	414711	75.23%	14.358%
20	6.621	615	618	625	rBV5	2470	9428	1.71%	0.326%
21	7.025	656	659	661	rBV3	3180	7068	1.28%	0.245%
22	7.725	725	730	735	rBV	49819	115661	20.98%	4.004%
23	8.366	787	795	798	rBV5	5681	19968	3.62%	0.691%
24	8.415	798	800	805	rVV4	6134	17141	3.11%	0.593%
25	8.770	834	836	841	rVV5	3125	7824	1.42%	0.271%
26	9.578	915	918	921	rBV4	4528	9644	1.75%	0.334%
27	9.637	921	924	930	rVB3	9589	23631	4.29%	0.818%
28	9.923	948	953	961	rVV	129248	284543	51.62%	9.852%
29	10.268	986	988	993	rVB4	3822	8700	1.58%	0.301%
30	10.840	1042	1046	1048	rBV3	3876	8357	1.52%	0.289%
31	10.899	1048	1052	1055	rVV4	4871	10936	1.98%	0.379%
32	11.224	1083	1085	1088	rVV3	4875	8593	1.56%	0.298%
33	11.461	1104	1109	1110	rBV	8915	15997	2.90%	0.554%
34	11.510	1110	1114	1120	rVV	117062	212122	38.48%	7.344%

Data Path : Z:\VOASRV\HPCHEM1\MSVOA F\DATA\VF051219\
 Data File : VF062499.D
 Acq On : 12 May 2019 13:25
 Operator : FY/SY
 Sample : K2734-01
 Misc : 6.71g/5mL/MSVOA F/SOIL
 ALS Vial : 7 Sample Multiplier: 1

Instrument :
 MSVOA_F
 ClientSampleId :
 P021-SS004-1218-01

Integration Parameters: RTEINT.P
 Integrator: RTE
 Smoothing : ON Filtering: 5
 Sampling : 1 Min Area: 3 % of largest Peak
 Start Thrs: 0.2 Max Peaks: 100
 Stop Thrs : 0 Peak Location: TOP

If leading or trailing edge < 100 prefer < Baseline drop else tangent >
 Peak separation: 5

Method : Z:\VOASRV\HPCHEM1\MSVOA_X\METHOD\82F050619S.M
 Title : SW846 8260

35	11.628	1124	1126	1130	rVV3	8152	18890	3.43%	0.654%
36	11.687	1130	1132	1135	rVB3	6936	9627	1.75%	0.333%
37	11.747	1135	1138	1139	rBV3	3586	6217	1.13%	0.215%
38	11.796	1139	1143	1148	rVB7	4259	10104	1.83%	0.350%
39	11.904	1150	1154	1156	rVB4	4269	9025	1.64%	0.312%
40	11.983	1156	1162	1164	rBV5	3968	9789	1.78%	0.339%
41	12.279	1190	1192	1195	rVB4	4583	8636	1.57%	0.299%
42	12.377	1198	1202	1204	rBV3	4053	7820	1.42%	0.271%
43	12.535	1215	1218	1222	rBV5	5809	11846	2.15%	0.410%
44	12.624	1223	1227	1235	rVB	168206	285522	51.80%	9.885%
45	12.821	1246	1247	1249	rBV	9456	7820	1.42%	0.271%
46	12.900	1252	1255	1261	rVB6	4492	10856	1.97%	0.376%
47	13.334	1296	1299	1303	rVB4	8992	16168	2.93%	0.560%
48	13.748	1338	1341	1343	rBV4	3413	6347	1.15%	0.220%
49	13.886	1352	1355	1357	rBV	15253	20083	3.64%	0.695%
50	13.925	1357	1359	1361	rVB3	5217	7151	1.30%	0.248%
51	14.240	1388	1391	1394	rVV4	5883	11266	2.04%	0.390%
52	14.507	1414	1418	1424	rVB	23098	37266	6.76%	1.290%
53	14.645	1429	1432	1435	rBV5	8342	14550	2.64%	0.504%
54	15.798	1546	1549	1551	rBV4	2735	5834	1.06%	0.202%

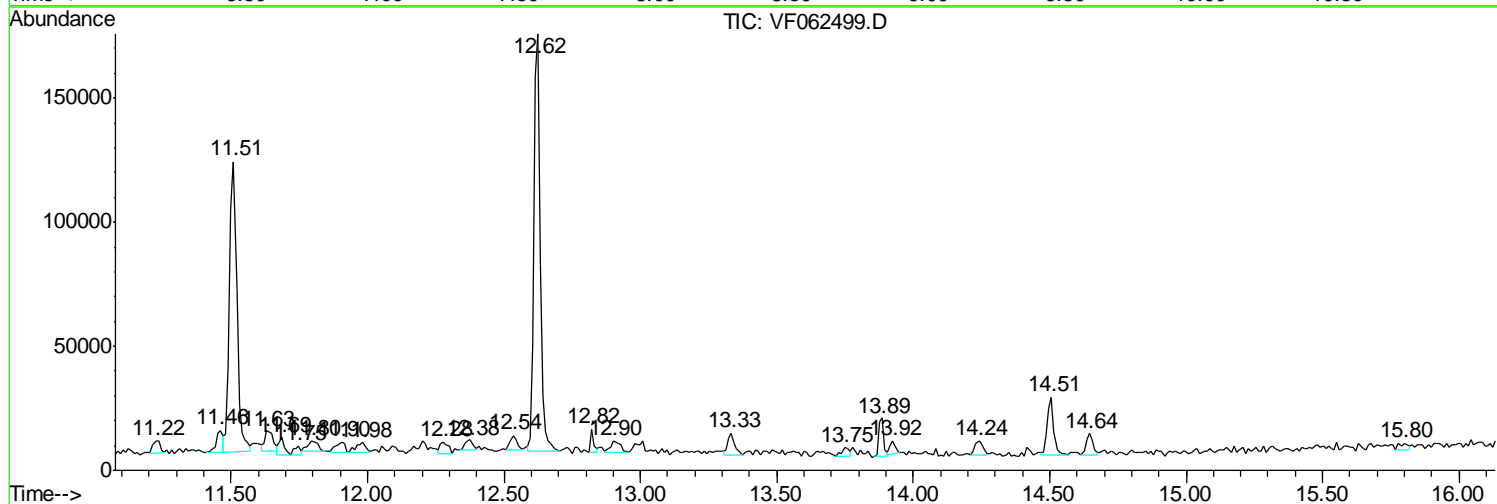
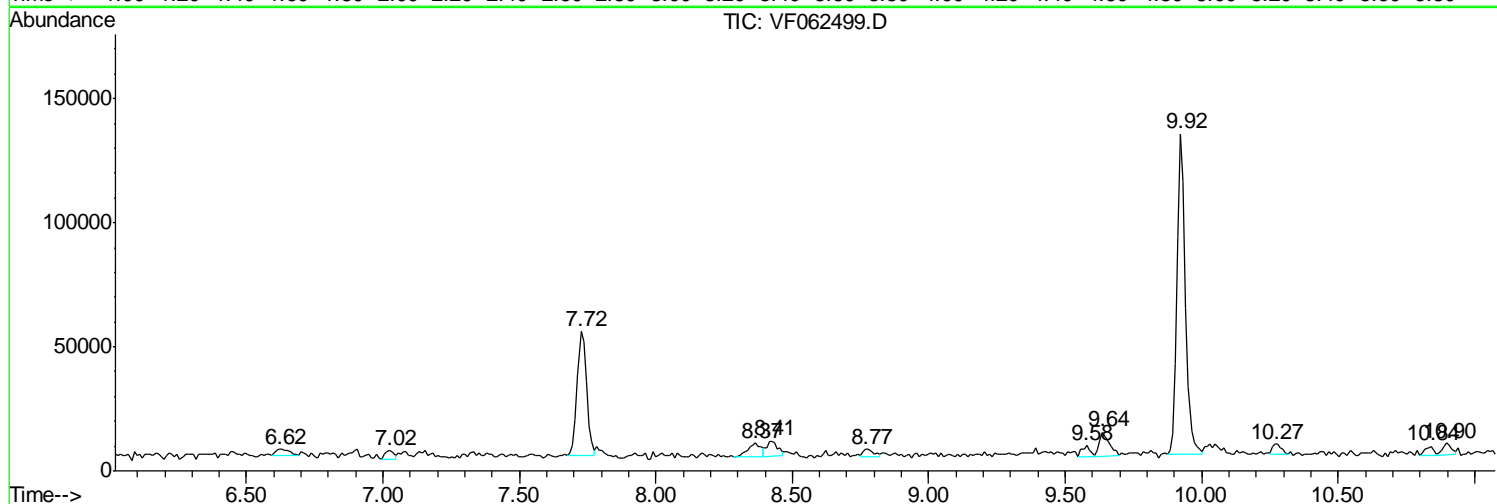
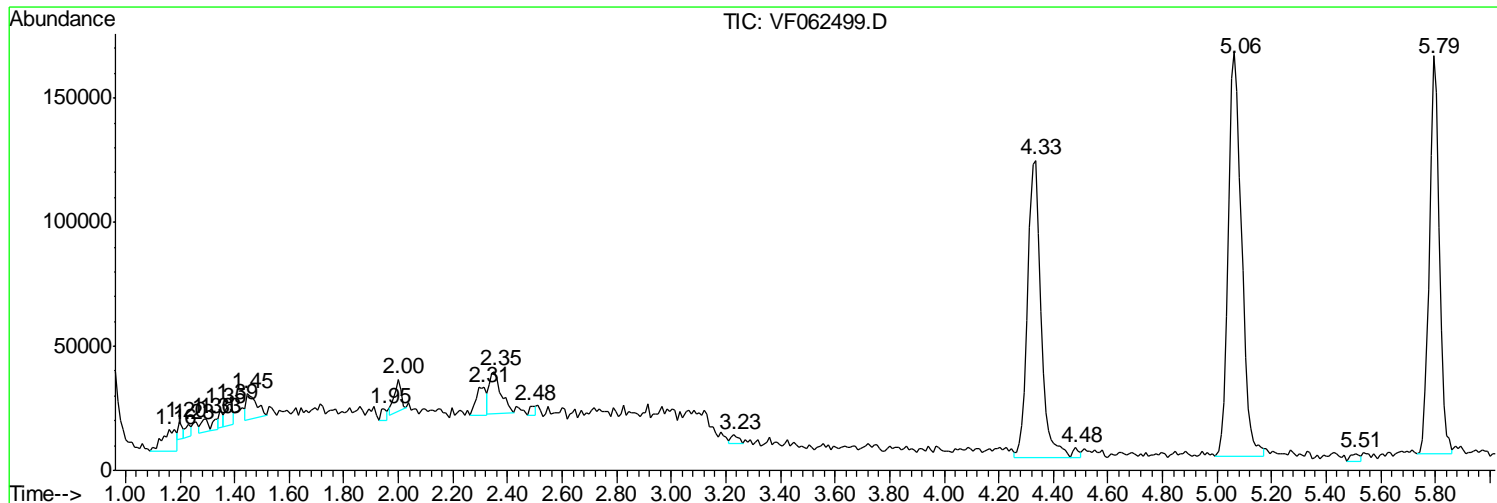
Sum of corrected areas: 2888308

Data Path : Z:\VOASRV\HPCHEM1\MSVOA F\DATA\VF051219\
 Data File : VF062499.D
 Acq On : 12 May 2019 13:25
 Operator : FY/SY
 Sample : K2734-01
 Misc : 6.71g/5mL/MSVOA F/SOIL
 ALS Vial : 7 Sample Multiplier: 1

Instrument :
 MSVOA_F
 ClientSampleId :
 P021-SS004-1218-01

Quant Method : Z:\VOASRV\HPCHEM1\MSVOA_X\METHOD\82F050619S.M
 Quant Title : SW846 8260

TIC Library : C:\DATABASE\NIST11.L
 TIC Integration Parameters: LSCINT.P



Data Path : Z:\VOASRV\HPCHEM1\MSVOA_F\DATA\VF051219\
Data File : VF062499.D
Acq On : 12 May 2019 13:25
Operator : FY/SY
Sample : K2734-01
Misc : 6.71g/5mL/MSVOA_F/SOIL
ALS Vial : 7 Sample Multiplier: 1

Instrument :
MSVOA_F
ClientSampleId :
P021-SS004-1218-01

Quant Method : Z:\VOASRV\HPCHEM1\MSVOA_X\METHOD\82F050619S.M
Quant Title : SW846 8260

TIC Library : C:\DATABASE\NIST11.L
TIC Integration Parameters: LSCINT.P

No Library Search Compounds Detected

Data Path : Z:\VOASRV\HPCHEM1\MSVOA_F\DATA\VF051219\
Data File : VF062499.D
Acq On : 12 May 2019 13:25
Operator : FY/SY
Sample : K2734-01
Misc : 6.71g/5mL/MSVOA_F/SOIL
ALS Vial : 7 Sample Multiplier: 1

Instrument :
MSVOA_F
ClientSampleId :
P021-SS004-1218-01

Quant Method : Z:\VOASRV\HPCHEM1\MSVOA_X\METHOD\82F050619S.M
Quant Title : SW846 8260

TIC Library : C:\DATABASE\NIST11.L
TIC Integration Parameters: LSCINT.P

TIC Top Hit name	RT	EstConc	Units	Response	--Internal Standard--			
					#	RT	Resp	Conc
